



SUPERIOR
Hays,
Kansas

MICRO
LOG

Company MULL DRILLING COMPANY, INC.
Well #1-14 TT&G
Field TROOPER
County KIOWA
State COLORADO

Company MULL DRILLING COMPANY, INC.
Well #1-14 TT&G
Field TROOPER
County KIOWA State COLORADO

Location: API # : 05-061-06837-0000
958' FNL & 1048' FWL

SEC 14 TWP 18S RGE 45W

Permanent Datum GROUND LEVEL Elevation 3951
Log Measured From KELLY BUSHING 13' A.G.L.
Drilling Measured From KELLY BUSHING

Other Services
CDL/CNL
DIL/SONIC
Elevation
K.B. 3964
D.F. 3962
G.L. 3951

Date	12/5/09		
Run Number	TWO		
Depth Driller	4975		
Depth Logger	4972		
Bottom Logged Interval	4949		
Top Log Interval	3200		
Casing Driller	8 5/8"@337'		
Casing Logger	335		
Bit Size	7 7/8		
Type Fluid in Hole	CHEMICAL MUD	CHLORIDES 2,500 PPM	
Density / Viscosity	9.2/66		
pH / Fluid Loss	9.5/7.2		
Source of Sample	FLOWLINE		
Rm @ Meas. Temp	1.10@66F		
Rmf @ Meas. Temp	.825@66F		
Rmc @ Meas. Temp	1.32@66F		
Source of Rmf / Rmc	MEASUREMENT		
Rm @ BHT	.581@125F		
Time Circulation Stopped	5 HOURS		
Time Logger on Bottom	5:00 P.M.		
Maximum Recorded Temperature	125F		
Equipment Number	0836		
Location	HAYS, KANSAS		
Recorded By	JEFF LUEBBERS		
Witnessed By	KEVIN KESSLER		

<<< Fold Here >>>

All interpretations are opinions based on inferences from electrical or other measurements and we cannot and do not guarantee the accuracy or correctness of any interpretation, and we shall not, except in the case of gross or willful negligence on our part, be liable or responsible for any loss, costs, damages, or expenses incurred or sustained by anyone resulting from any interpretation made by any of our officers, agents or employees. These interpretations are also subject to our general terms and conditions set out in our current Price Schedule.

Comments

THANK YOU FOR USING SUPERIOR WELL SERVICES HAYS, KANSAS (785) 628-6395
DIRECTIONS
BRANDON, CO. & HWY 96 E. EDGE @MM #186, 3 N. ON RD. #59, 1/4 E., N. INTO

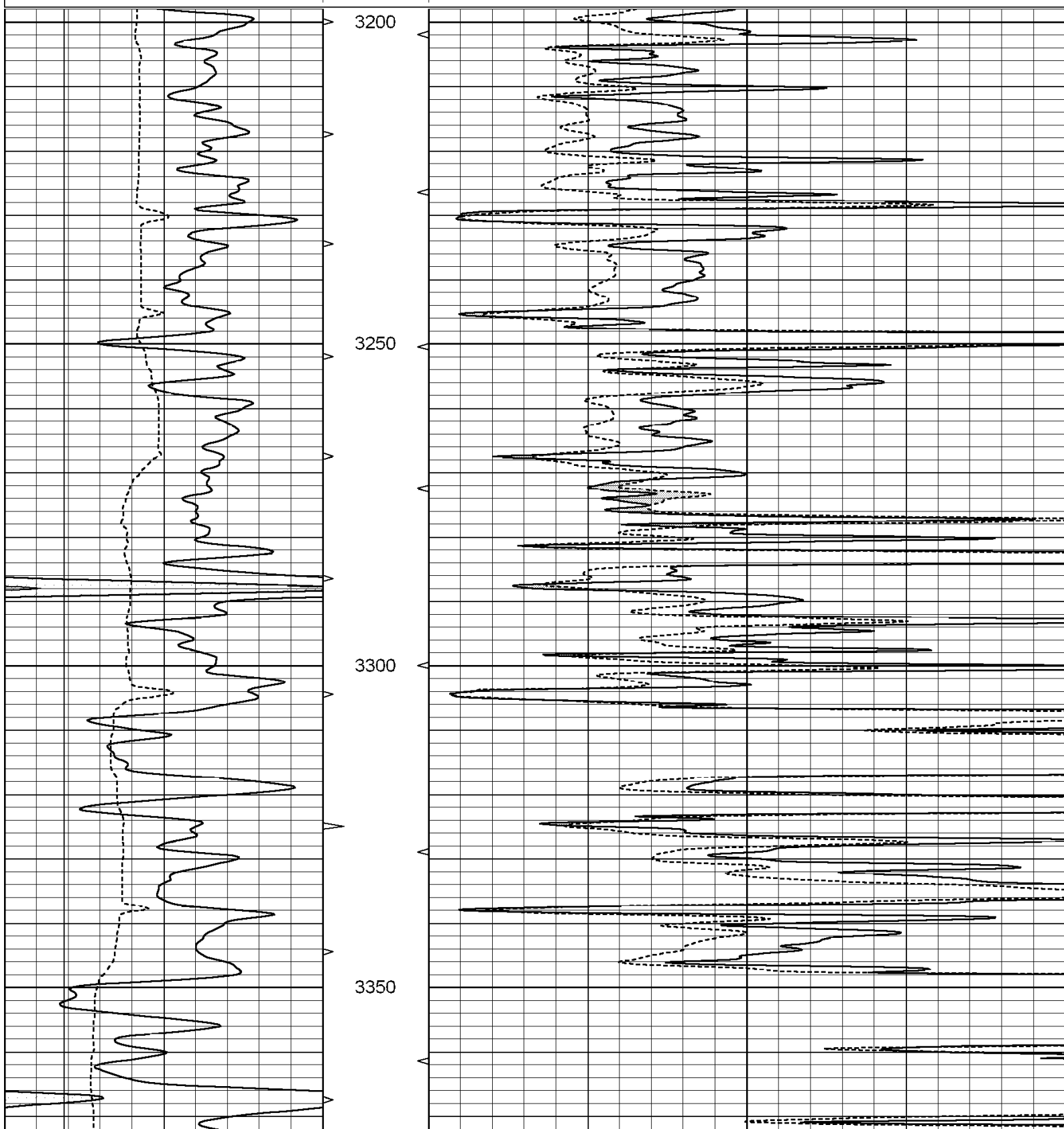


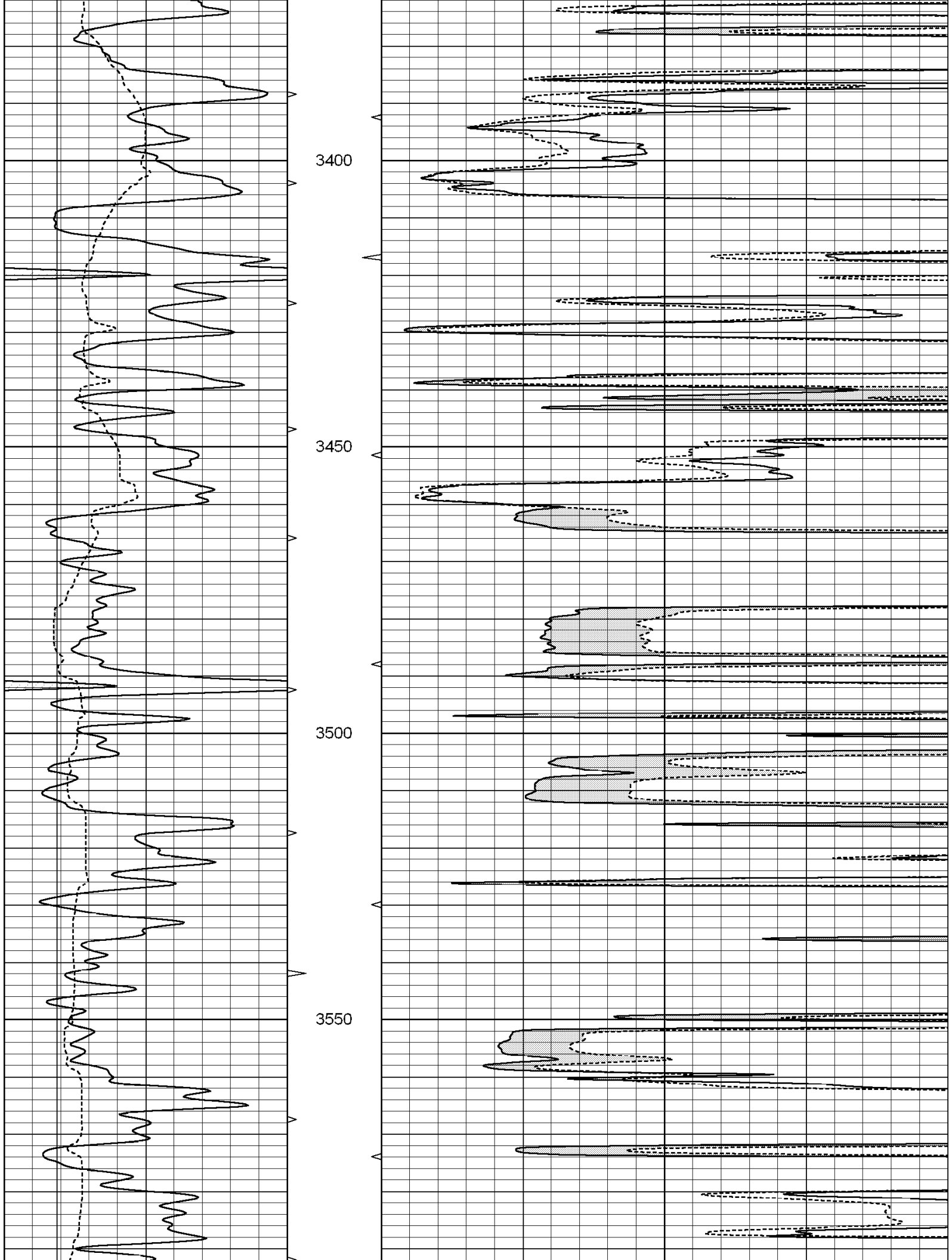
SUPERIOR
Hays,
Kansas

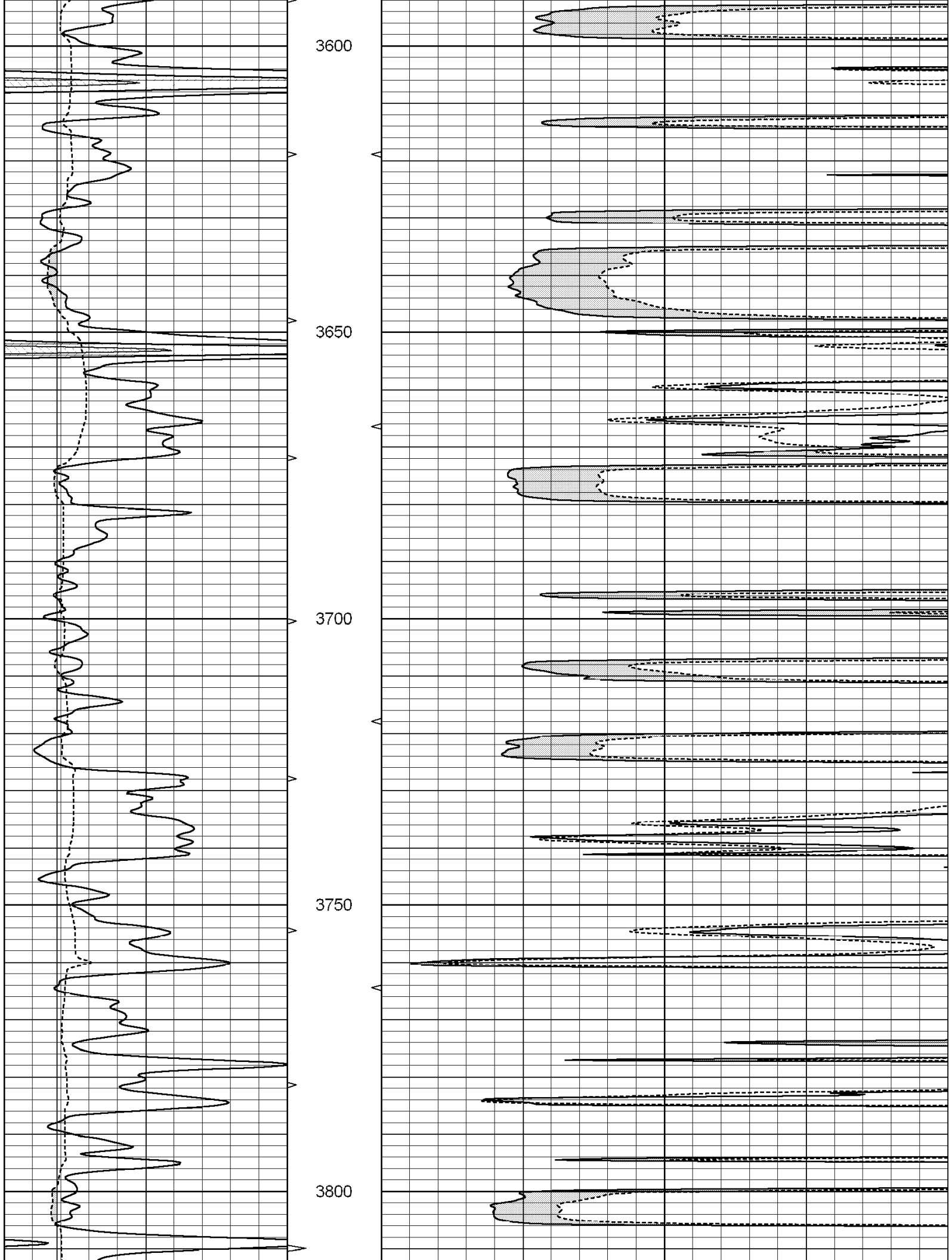
MAIN SECTION

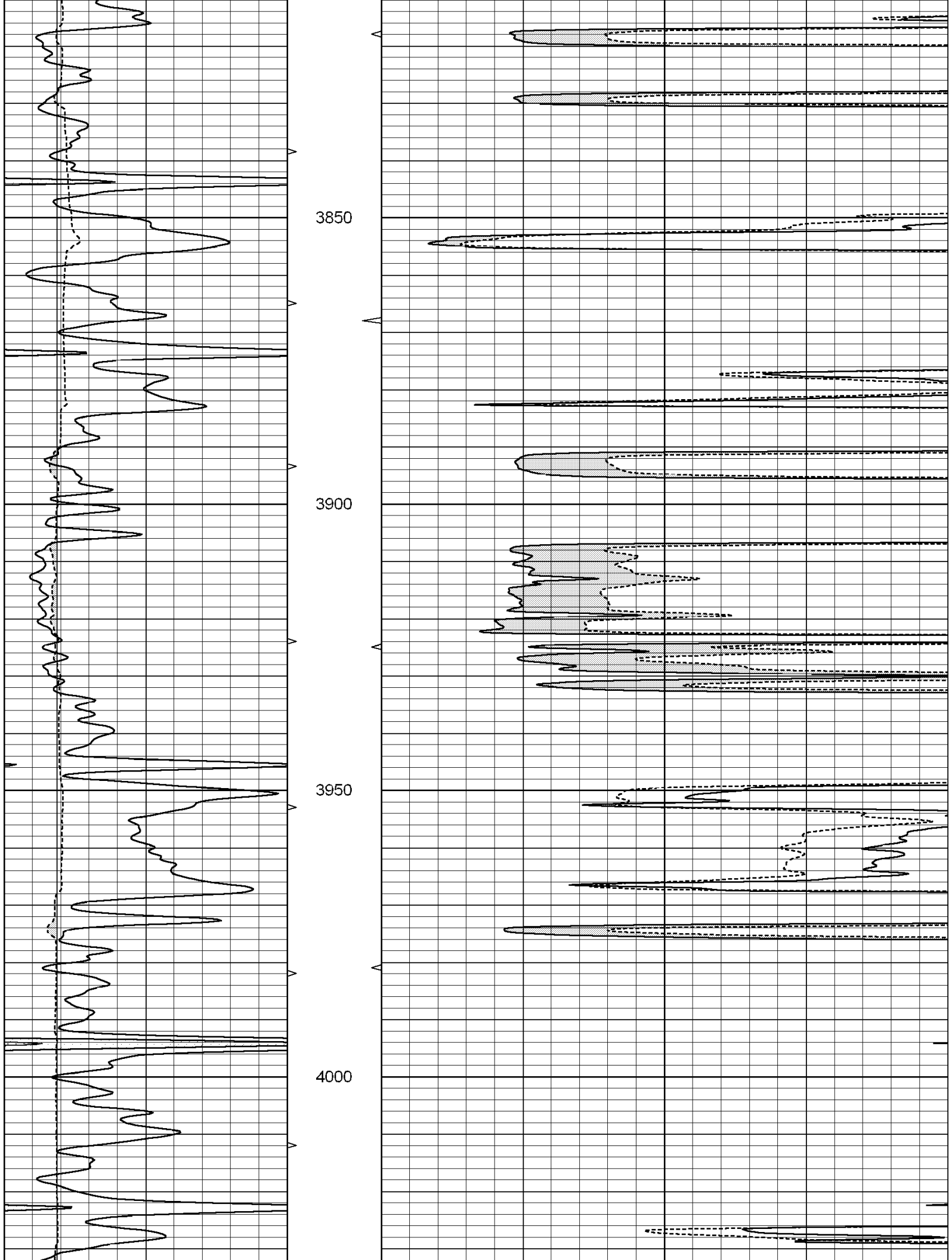
Database File: 004382ddn.db
Dataset Pathname: pass6.4
Presentation Format: micro
Dataset Creation: Sat Dec 05 20:54:45 2009
Charted by: Depth in Feet scaled 1:240

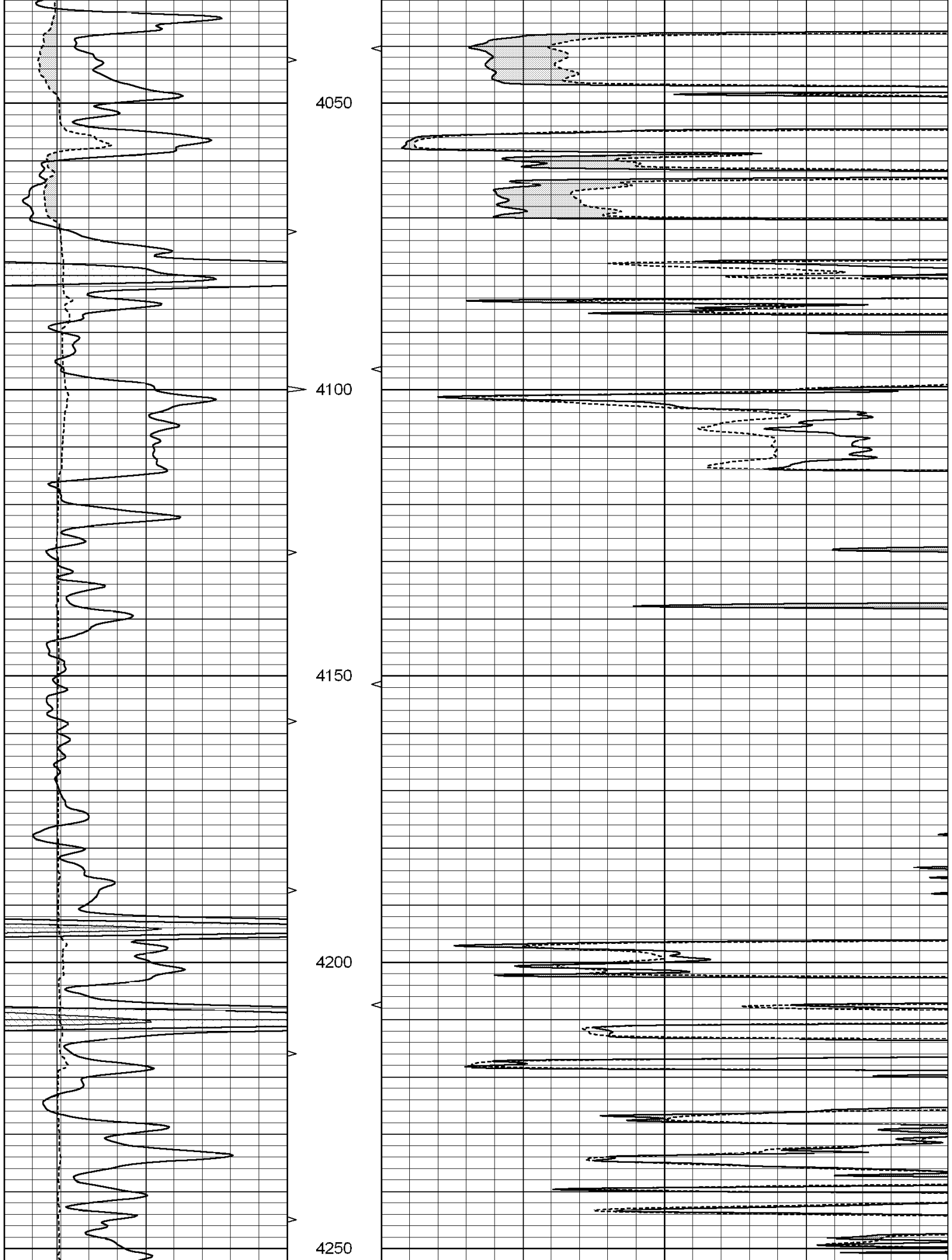
0	GAMMA RAY (GAPI)	150	ABHV	0	MEL1.5 (Ohm-m)	40
6	CALIPER (in)	16	10 (ft3) 0	0	MEL2.0 (Ohm-m)	40
			TBHV			
			0 (ft3) 10			

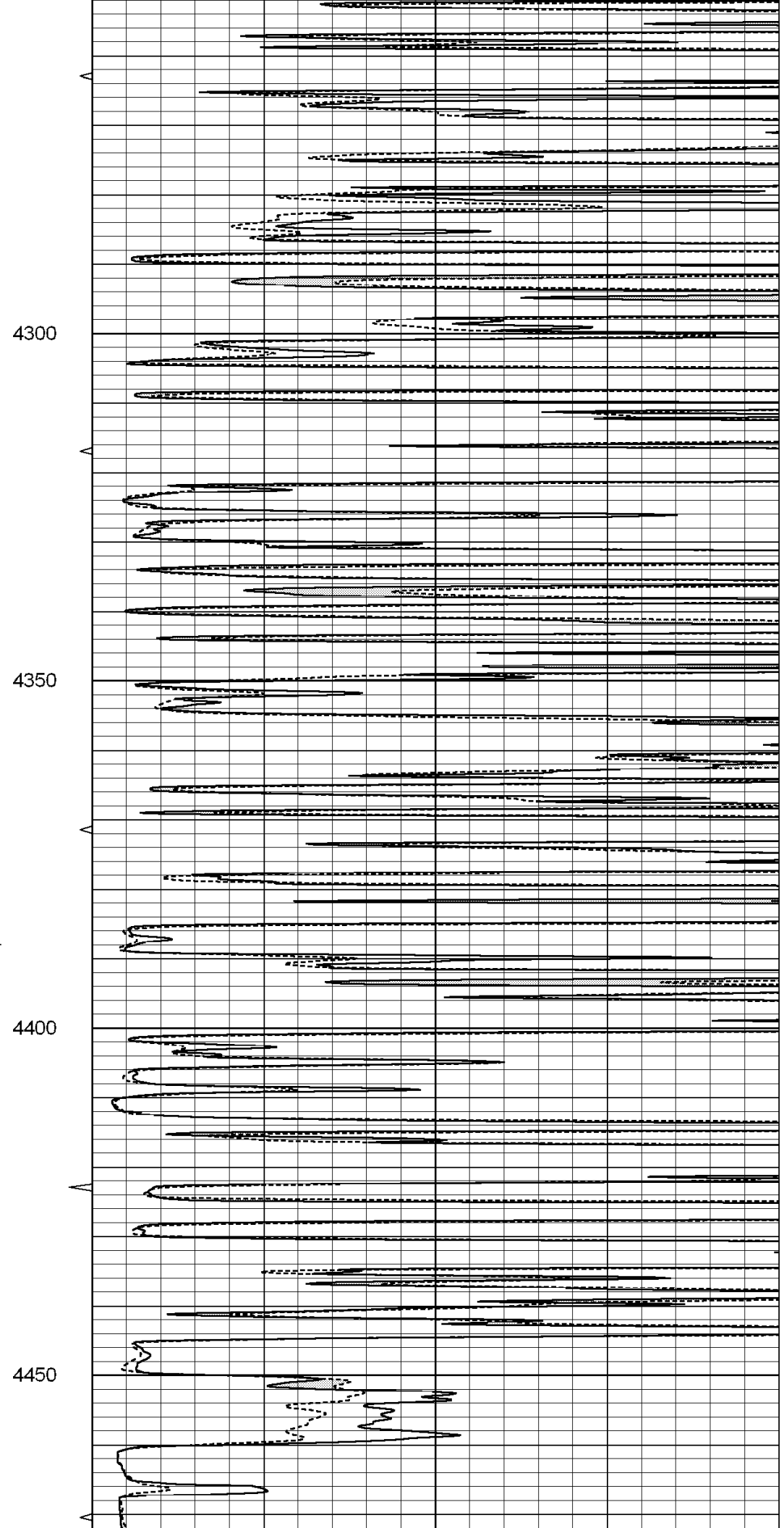
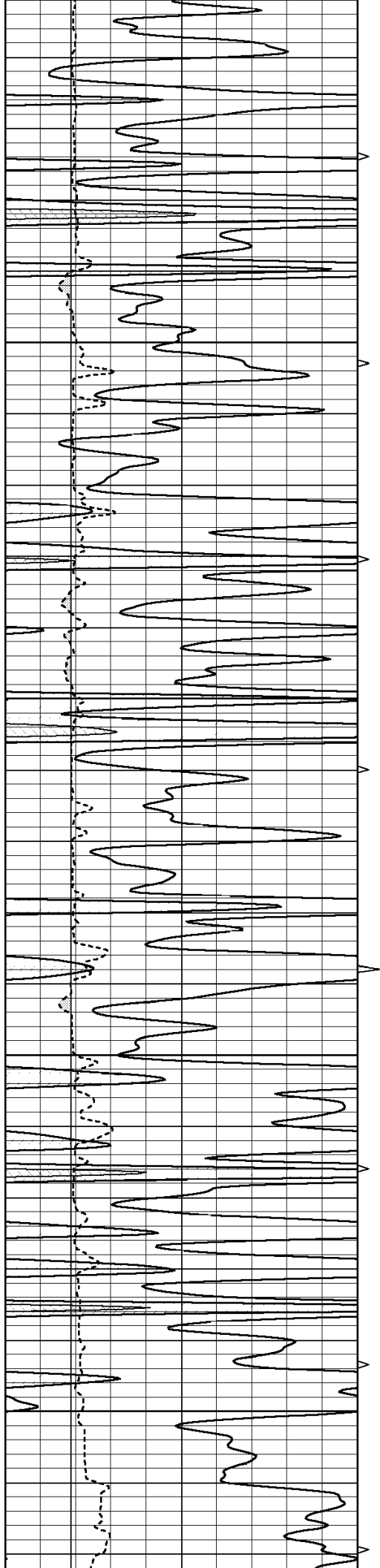


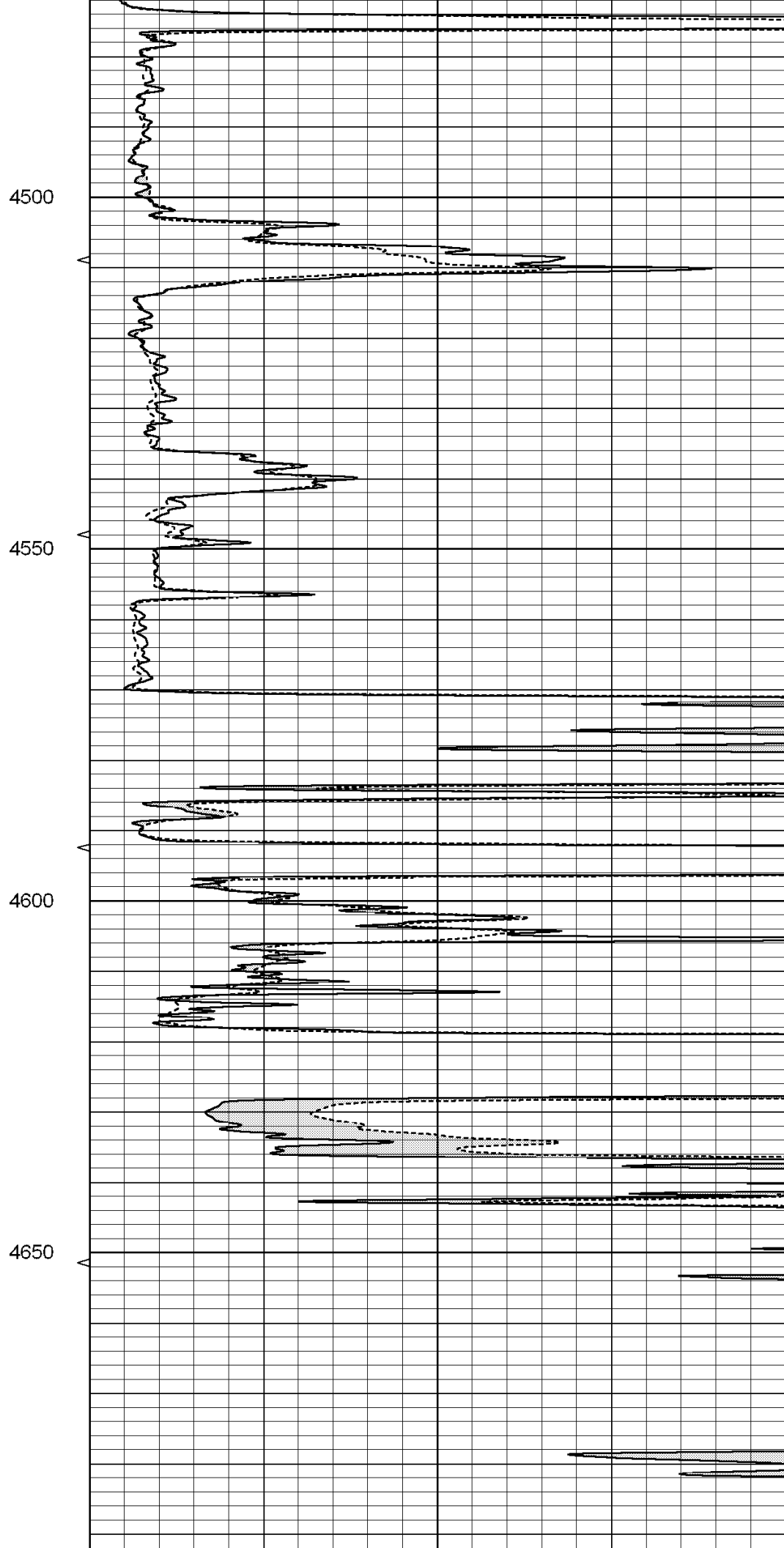
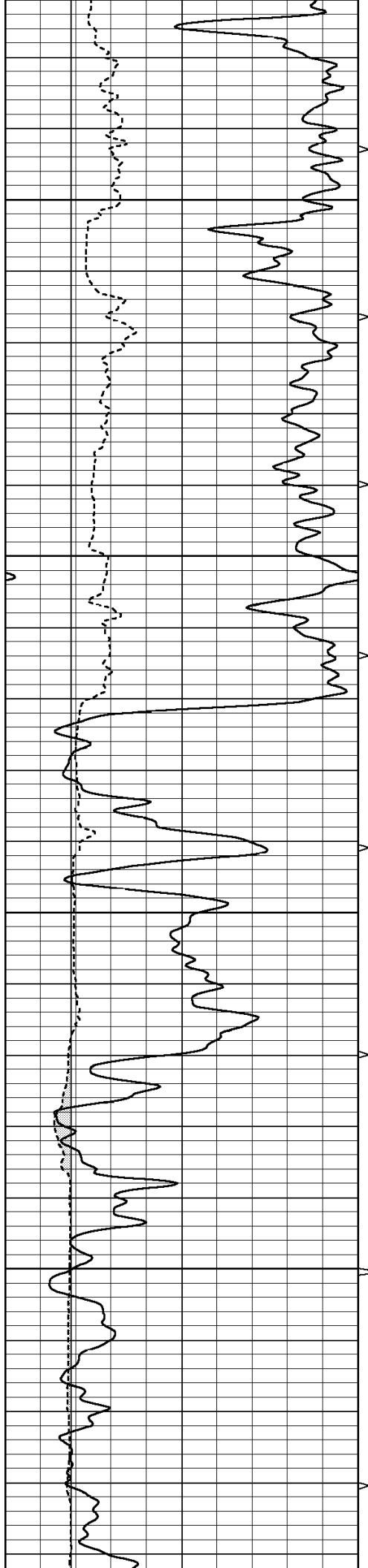


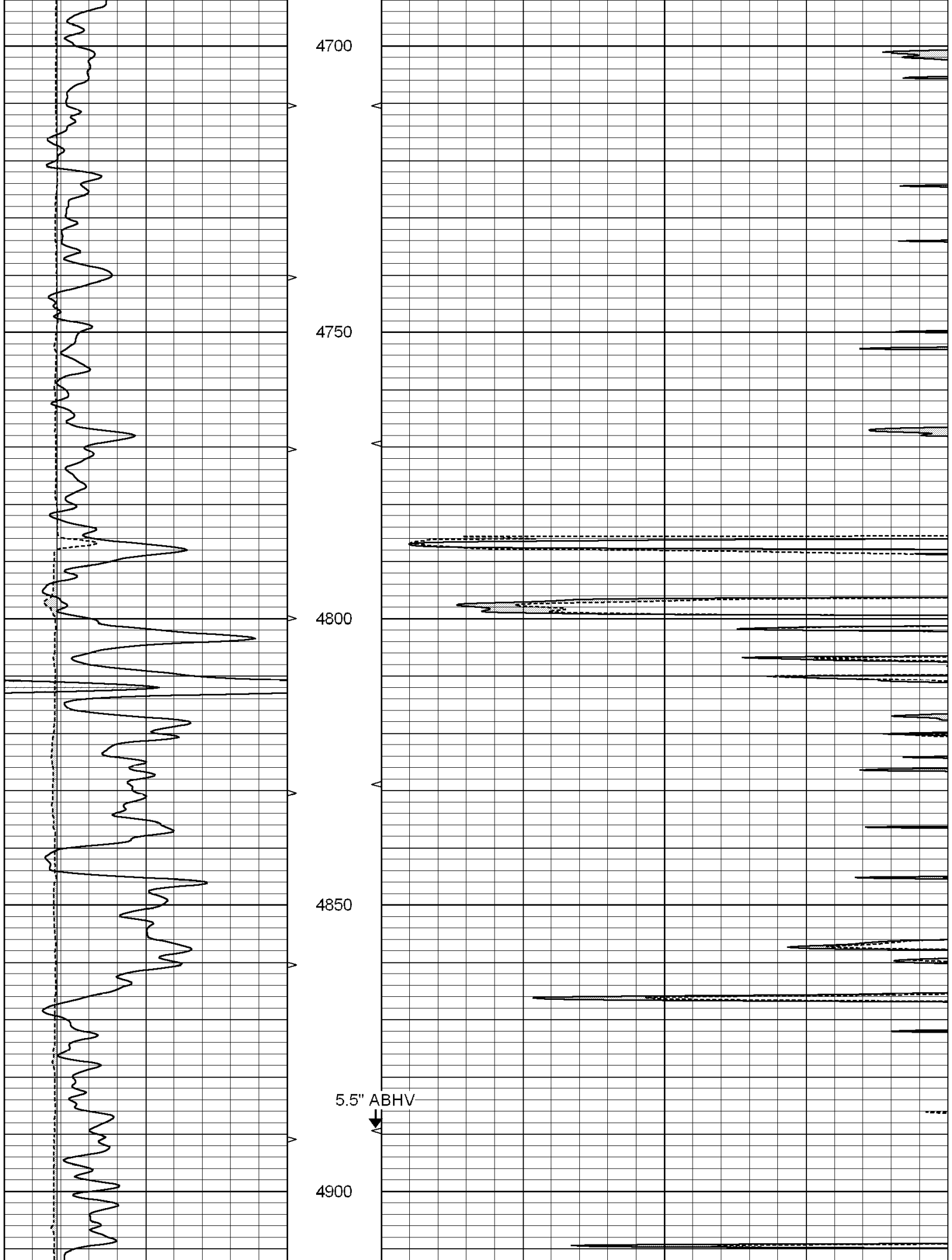


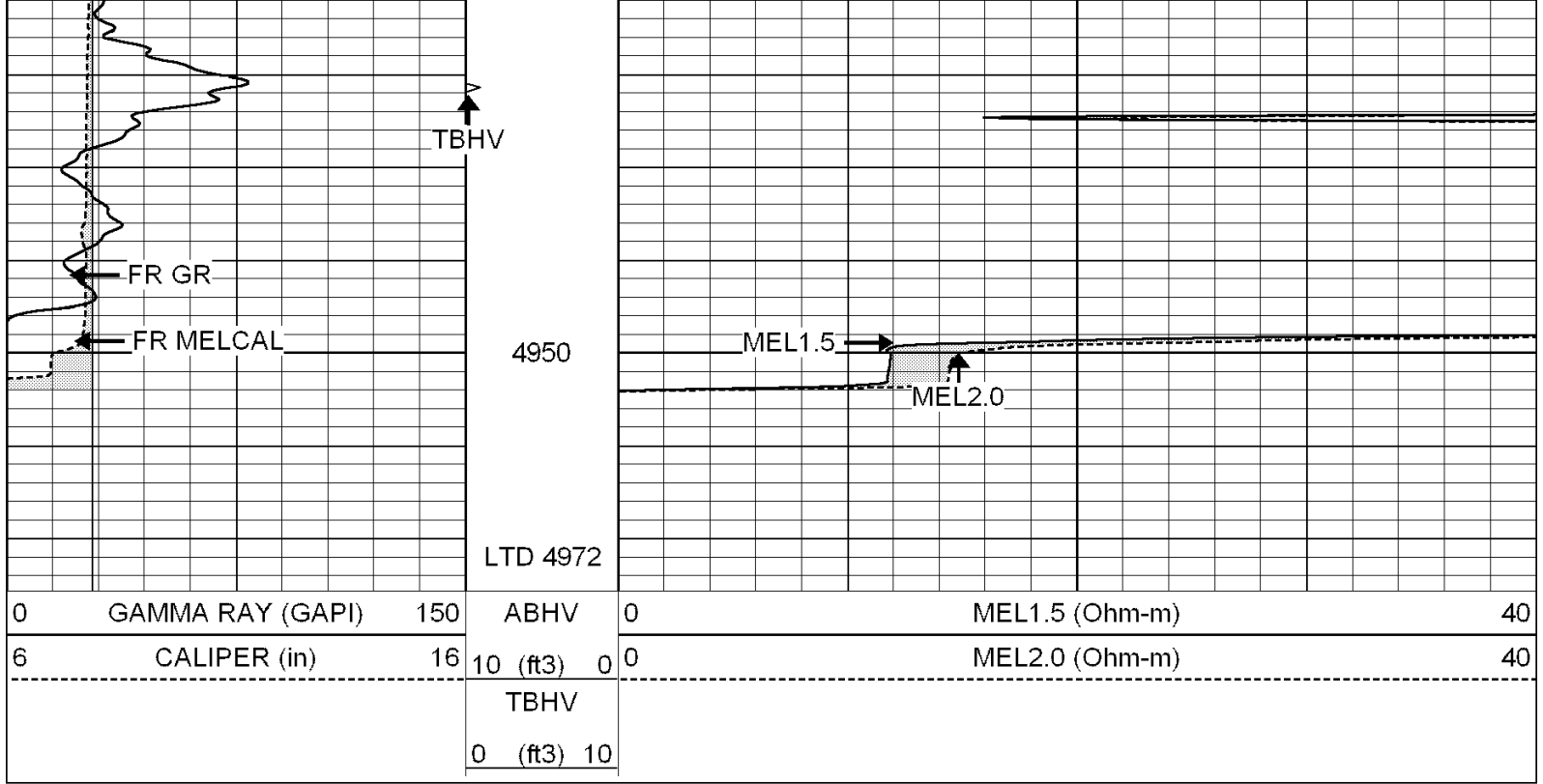








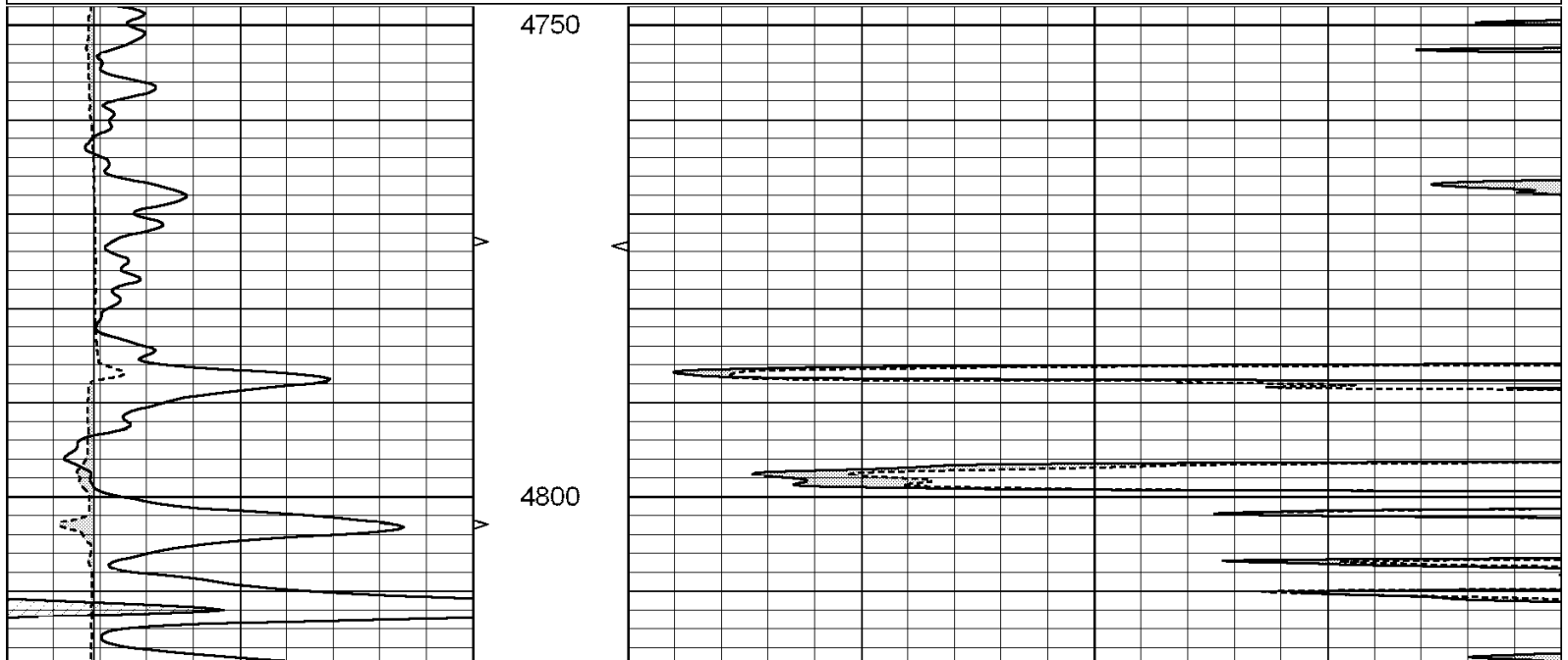
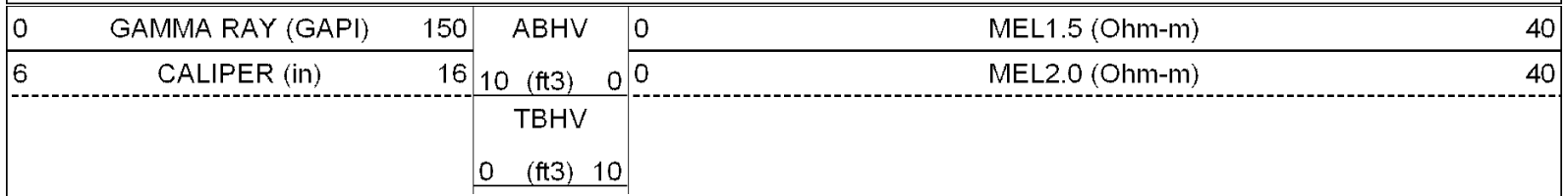


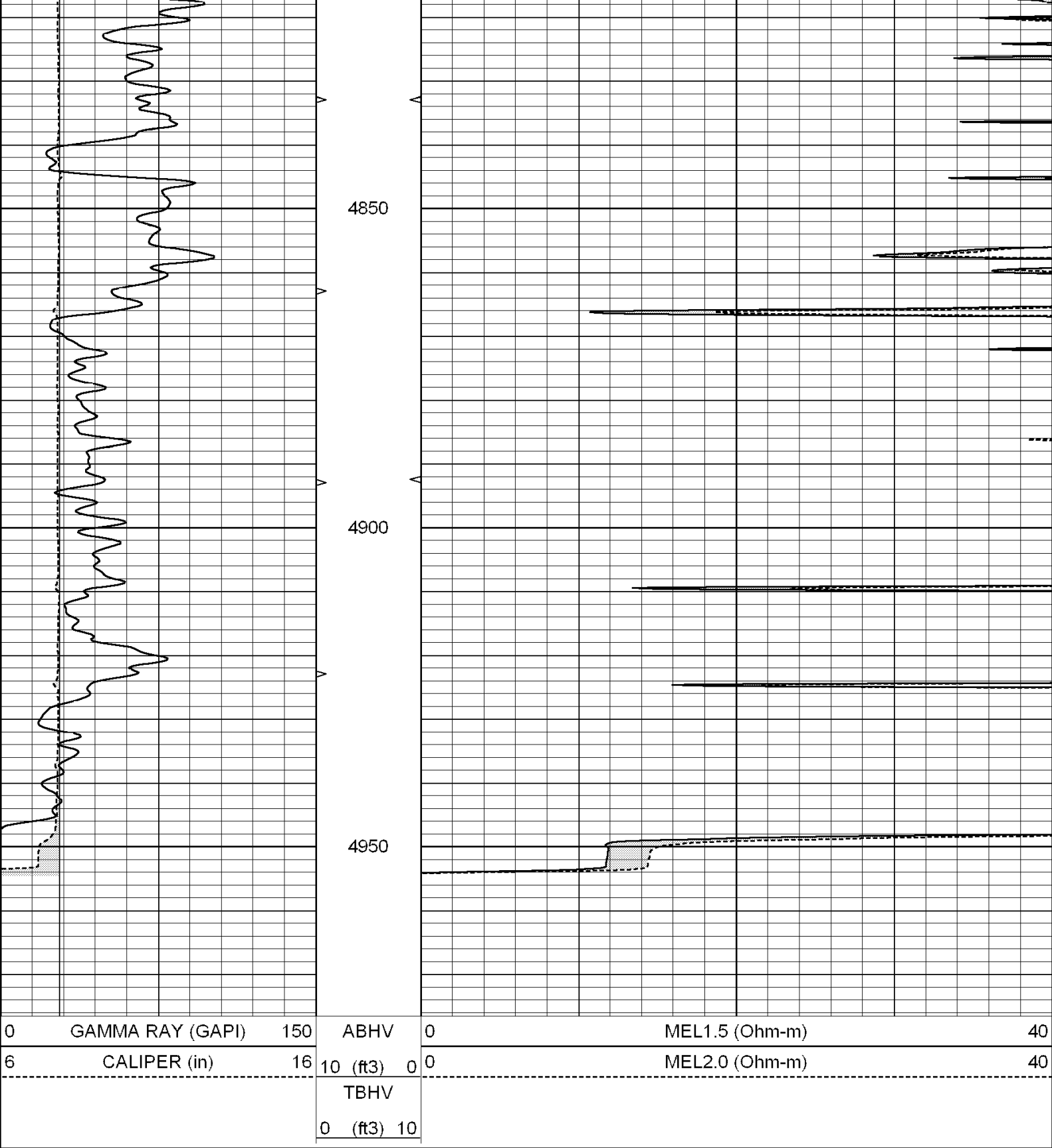


SUPERIOR
Hays,
Kansas

REPEAT SECTION

Database File: 004382ddn.db
 Dataset Pathname: pass5.4
 Presentation Format: micro
 Dataset Creation: Sat Dec 05 20:01:36 2009
 Charted by: Depth in Feet scaled 1:240





Calibration Report

Database File: 004382ddn.db
Dataset Pathname: pass6.4
Dataset Creation: Sat Dec 05 20:54:45 2009

MICRO Calibration Report

Serial Number: MICRO5
Tool Model: PROBE
Performed: Fri Nov 27 15:19:57 2009

Caliper Calibration:	Gain=3.169	Offset=0.392
References	Low Cal 6.800	High Cal 14.000
Readings	2.022	4.294
1.5" Calibration:	Gain=37.000	Offset=-1.700
References	Low Cal 0.000	High Cal 20.000
Readings	0.011	0.994
2" Calibration:	Gain=46.000	Offset=-2.000
References	Low Cal 0.000	High Cal 20.000
Readings	0.015	0.903
Gamma Ray Calibration Report		
Serial Number:	GR4	
Tool Model:	OPEN	
Performed:	Sat Dec 05 19:36:24 2009	
Calibrator Value:	200.0	GAPI
Background Reading:	0.0	cps
Calibrator Reading:	189.0	cps
Sensitivity:	0.8500	GAPI/cps