



SUPERIOR
Hays,
Kansas

SONIC LOG

Company MULL DRILLING COMPANY, INC.
Well #1-14 TT&G
Field TROOPER
County KIOWA
State COLORADO

Company MULL DRILLING COMPANY, INC.
Well #1-14 TT&G
Field TROOPER
County KIOWA State COLORADO

Location: API # : 05-061-06837-0000
958' FNL & 1048' FWL
SEC 14 TWP 18S RGE 45W
Permanent Datum GROUND LEVEL Elevation 3951
Log Measured From KELLY BUSHING 13' A.G.L.
Drilling Measured From KELLY BUSHING
Other Services
CDL/CNL
DIL/MEL
Elevation
K.B. 3964
D.F. 3962
G.L. 3951

Date	12/5/09		
Run Number	TWO		
Depth Driller	4975		
Depth Logger	4972		
Bottom Logged Interval	4959		
Top Log Interval	300		
Casing Driller	8 5/8"@337'		
Casing Logger	335		
Bit Size	7 7/8		
Type Fluid in Hole	CHEMICAL MUD	CHLORIDES 2,500 PPM	
Density / Viscosity	9.2/66		
pH / Fluid Loss	9.5/7.2		
Source of Sample	FLOWLINE		
Rm @ Meas. Temp	1.10@66F		
Rmf @ Meas. Temp	.825@66F		
Rmc @ Meas. Temp	1.32@66F		
Source of Rmf / Rmc	MEASUREMENT		
Rm @ BHT	.581@125F		
Time Circulation Stopped	5 HOURS		
Time Logger on Bottom	5:00 P.M.		
Maximum Recorded Temperature	125F		
Equipment Number	0836		
Location	HAYS, KANSAS		
Recorded By	JEFF LUEBBERS		
Witnessed By	KEVIN KESSLER		

<<< Fold Here >>>

All interpretations are opinions based on inferences from electrical or other measurements and we cannot and do not guarantee the accuracy or correctness of any interpretation, and we shall not, except in the case of gross or willful negligence on our part, be liable or responsible for any loss, costs, damages, or expenses incurred or sustained by anyone resulting from any interpretation made by any of our officers, agents or employees. These interpretations are also subject to our general terms and conditions set out in our current Price Schedule.

Comments

THANK YOU FOR USING SUPERIOR WELL SERVICES HAYS, KANSAS (785) 628-6395
DIRECTIONS
BRANDON, CO. & HWY 96 E. EDGE @MM #186, 3 N. ON RD. #59, 1/4 E., N. INTO

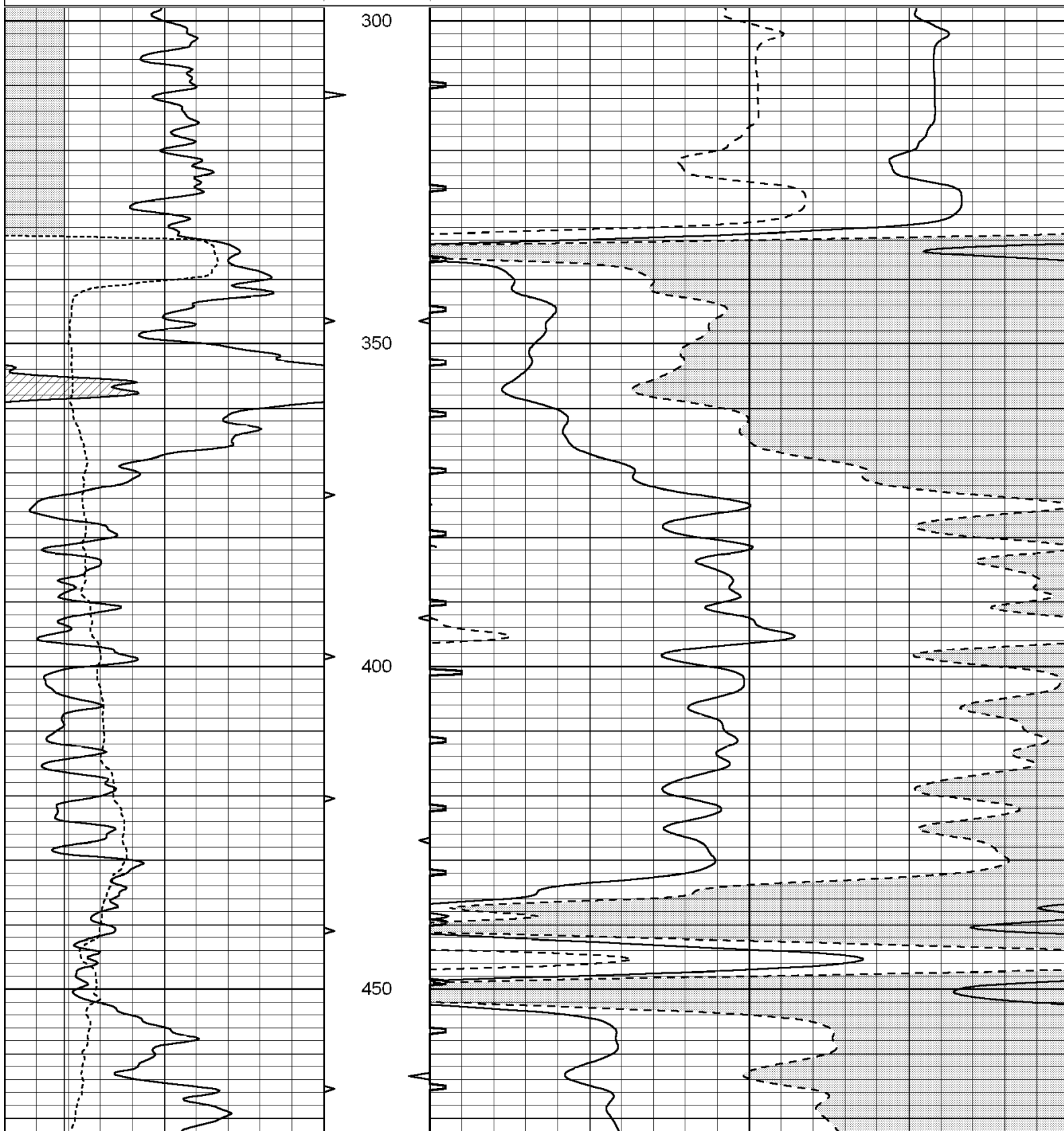


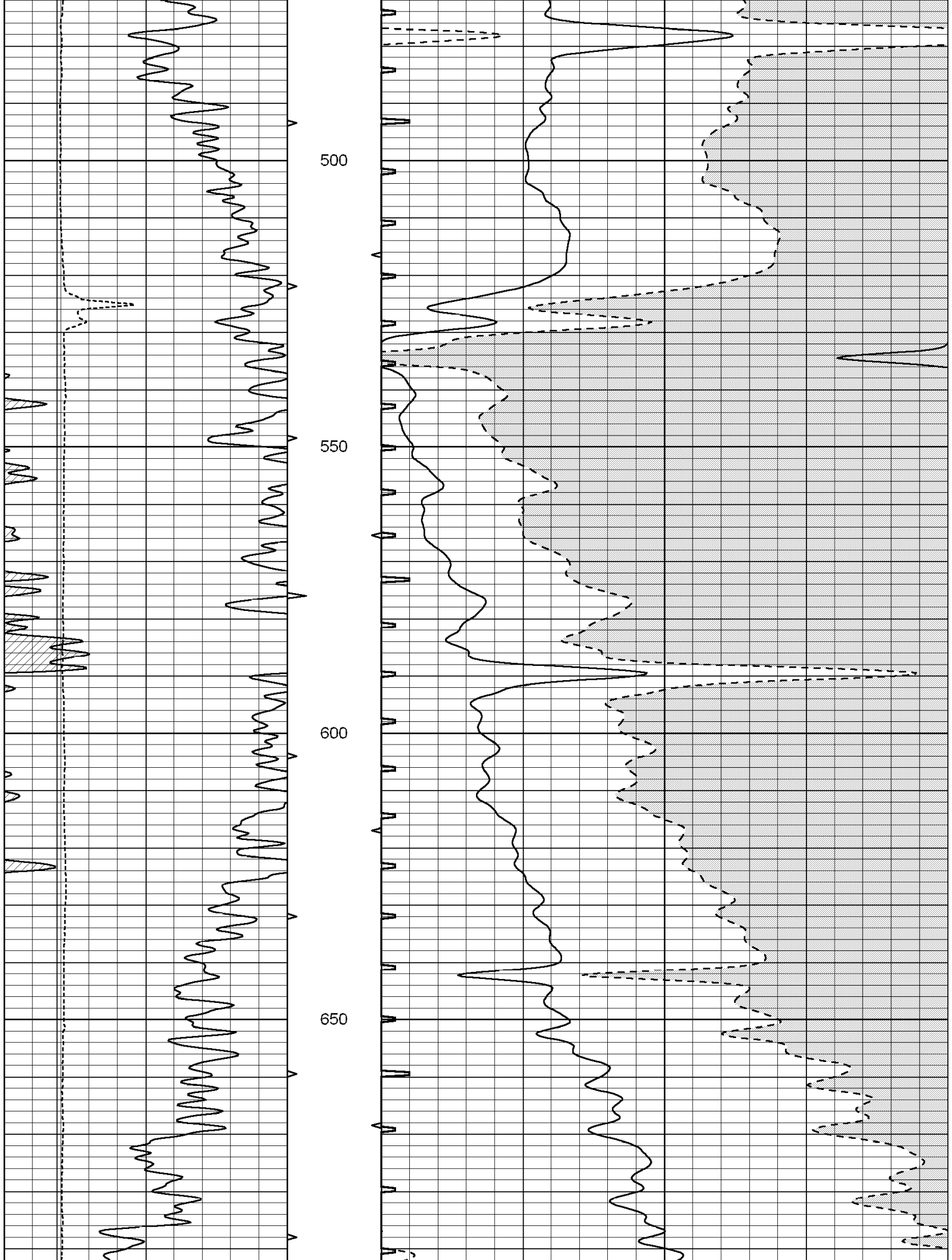
SUPERIOR
Hays,
Kansas

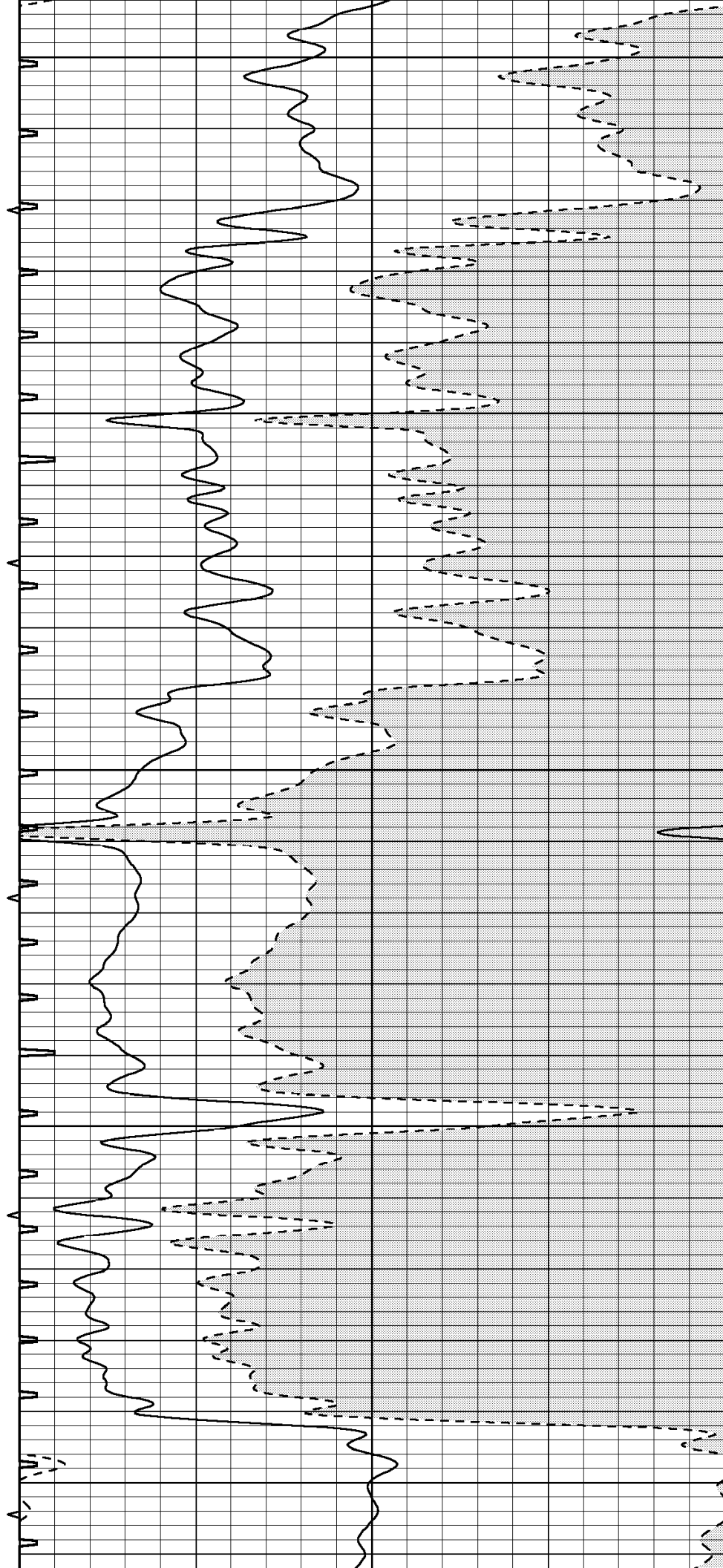
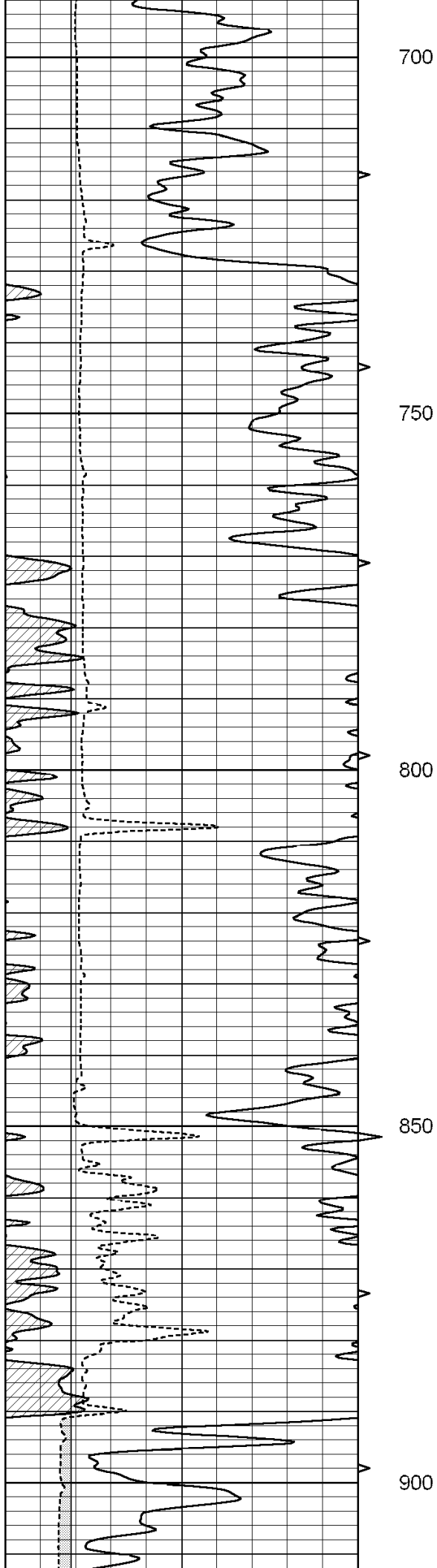
MAIN SECTION

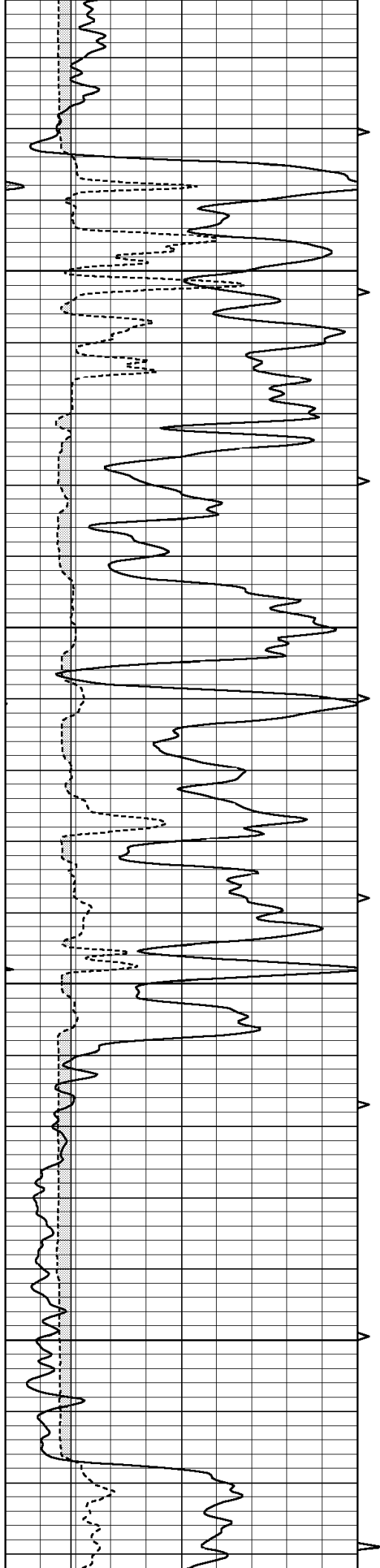
Database File: 004382ddn.db
Dataset Pathname: pass6.5
Presentation Format: slt
Dataset Creation: Sat Dec 05 21:25:15 2009 by Calc Open-Cased 060407
Charted by: Depth in Feet scaled 1:240

0	GAMMA RAY (GAPI)	150	ABHV	140	DELTA TIME (usec/ft)	40
6	CALIPER (in)	16	10 (ft3) 0	30	SONIC POROSITY (pu)	-10
			TBHV	0	ITT (msec)	20
			0 (ft3) 10			







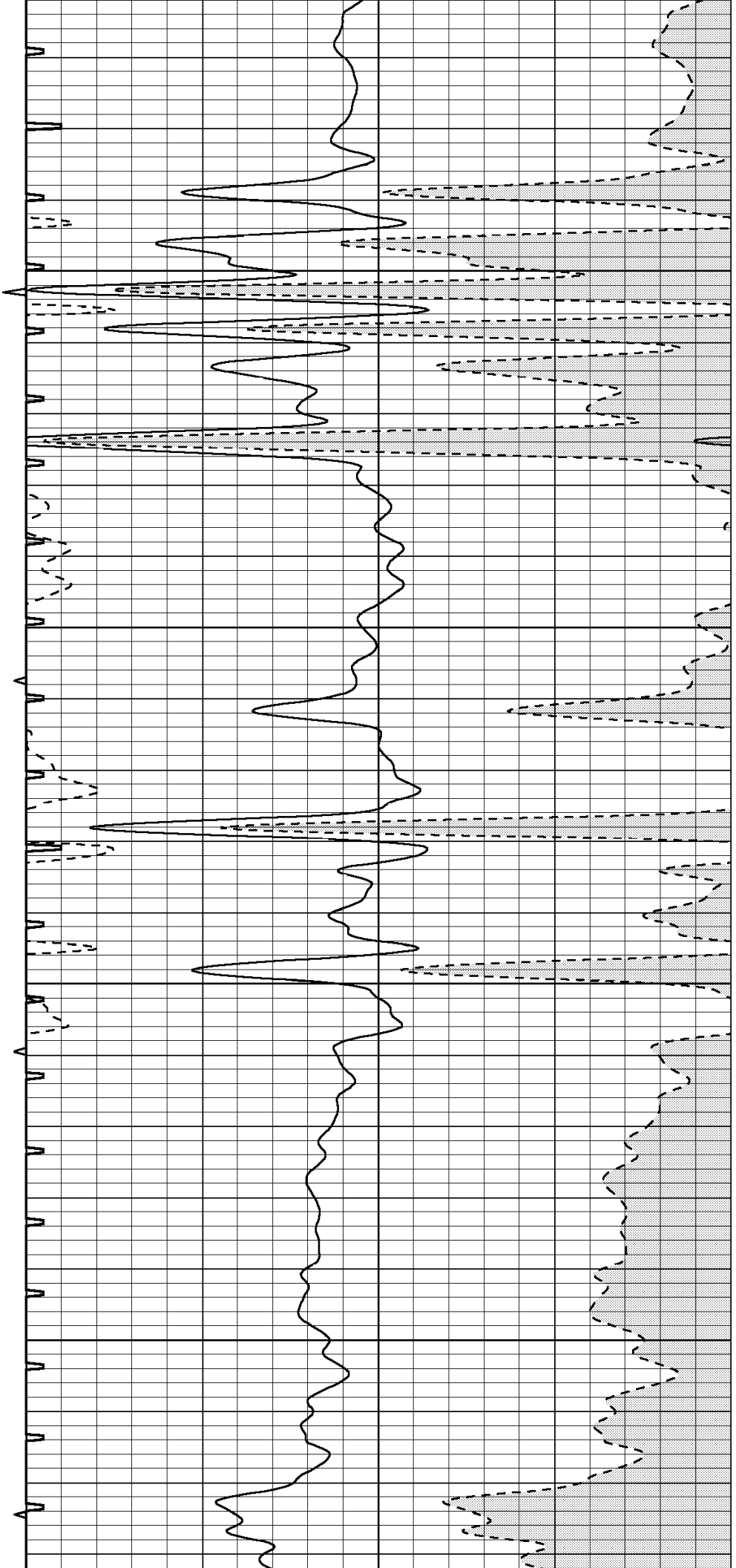


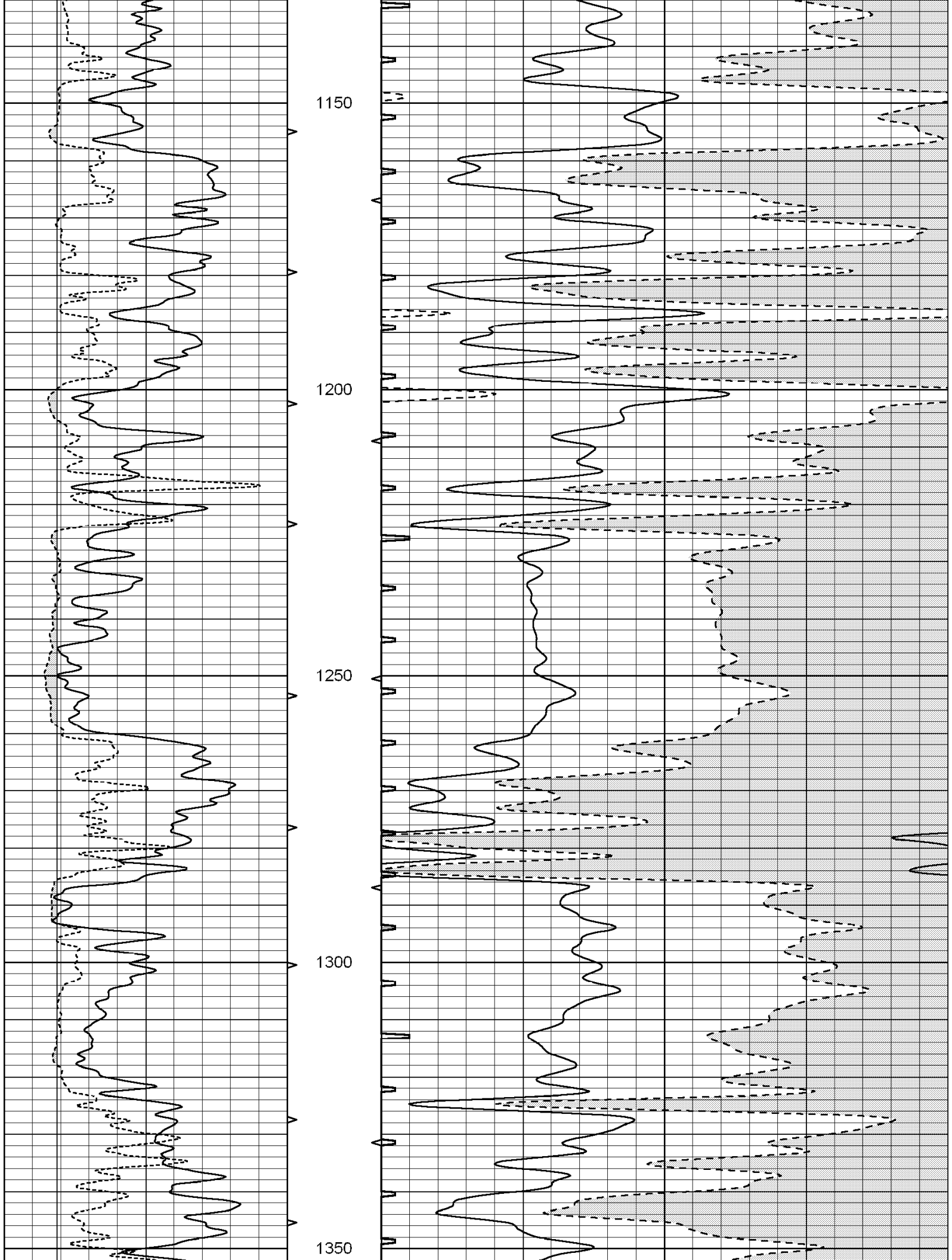
950

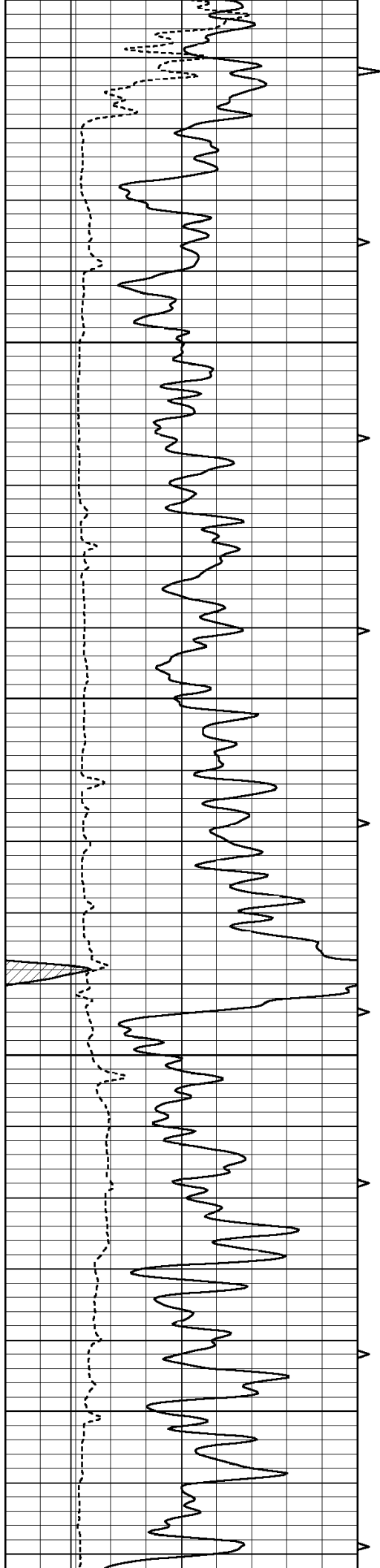
1000

1050

1100





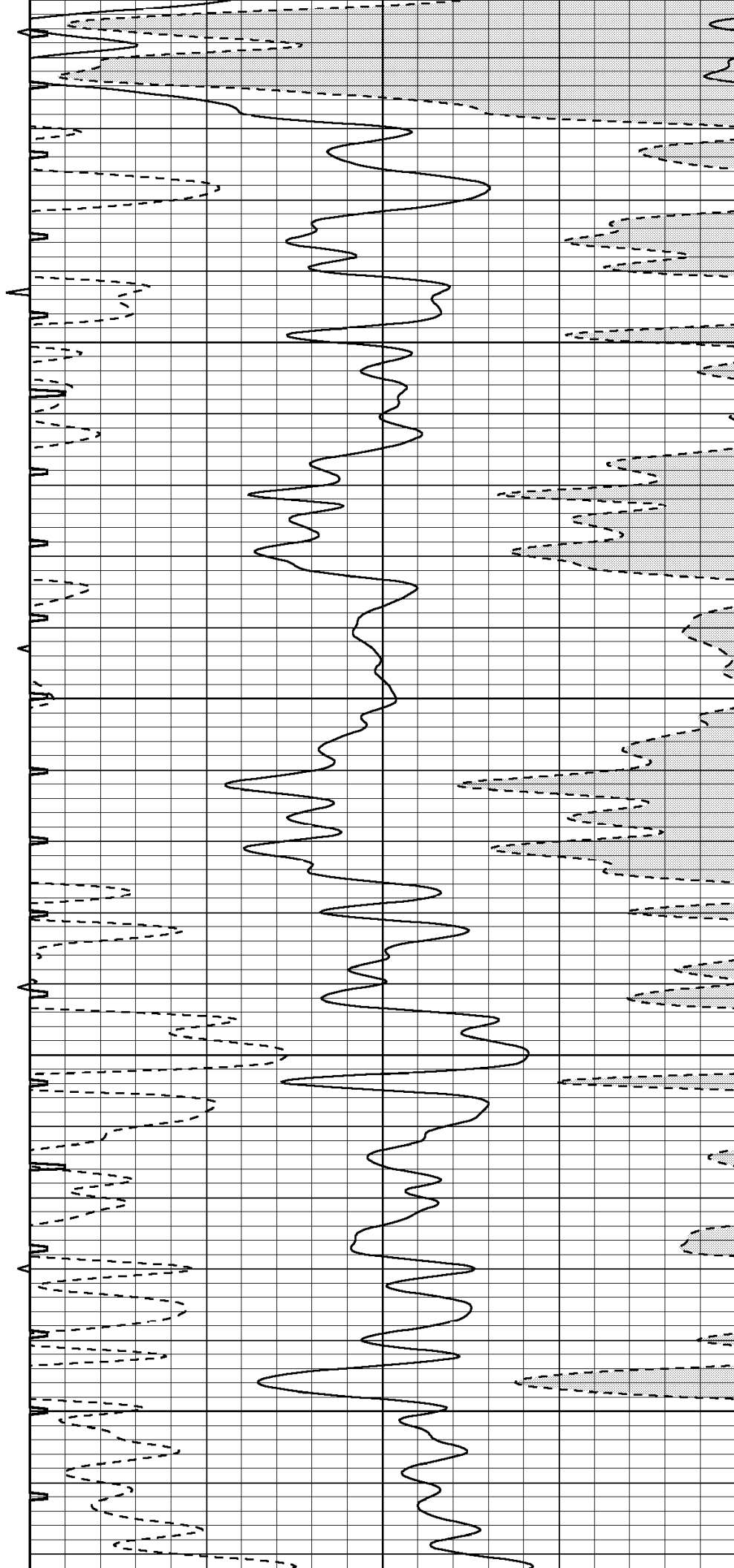


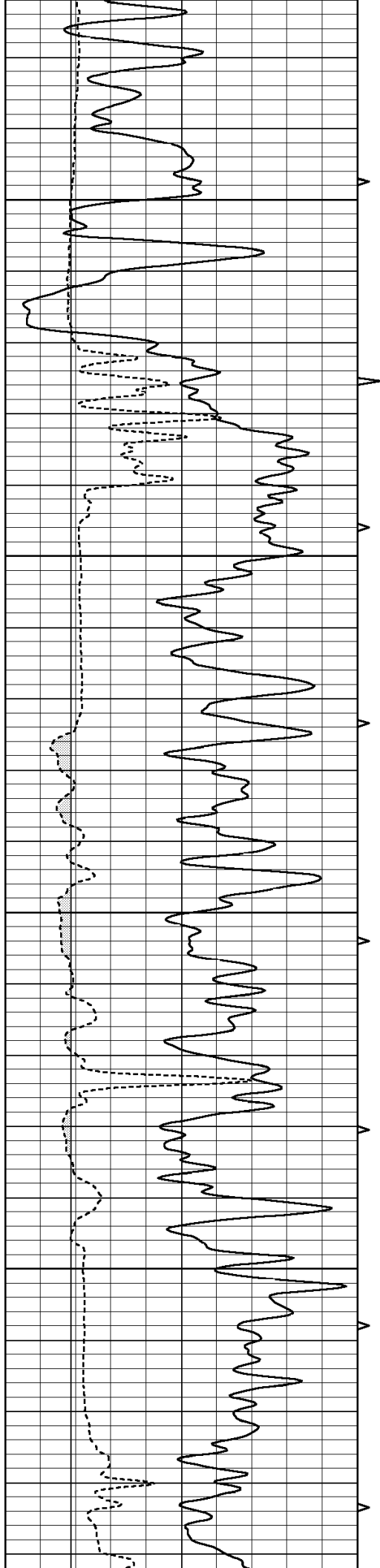
1400

1450

1500

1550



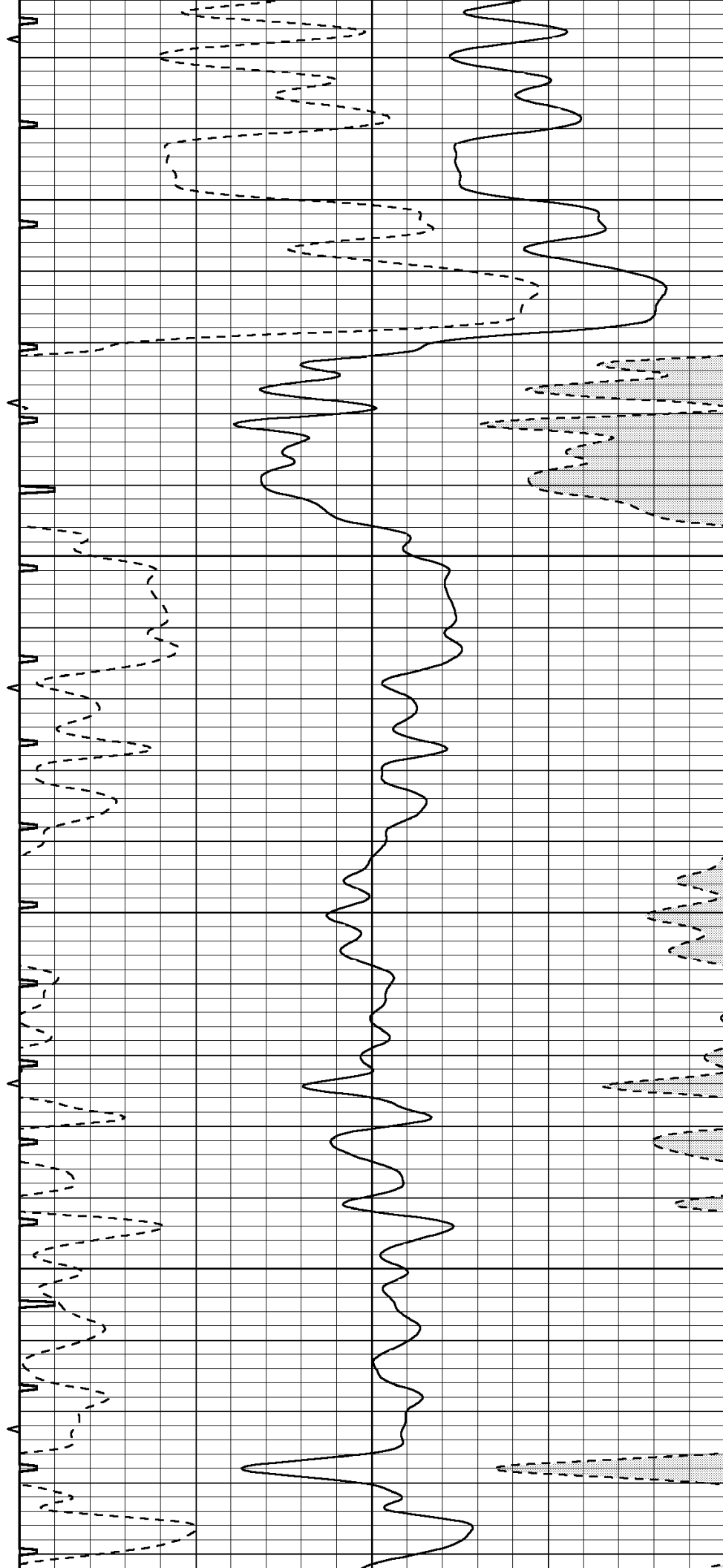


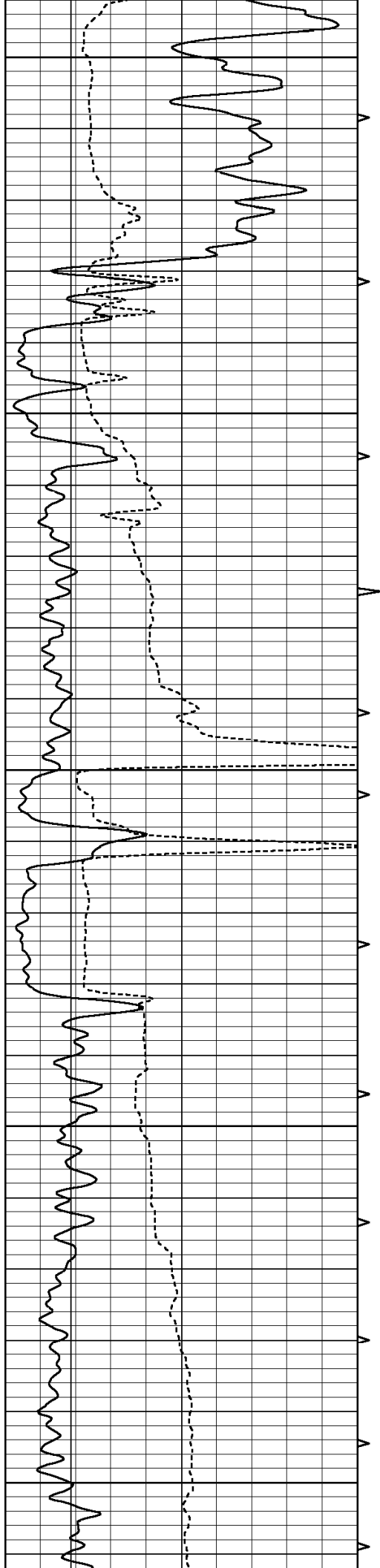
1600

1650

1700

1750





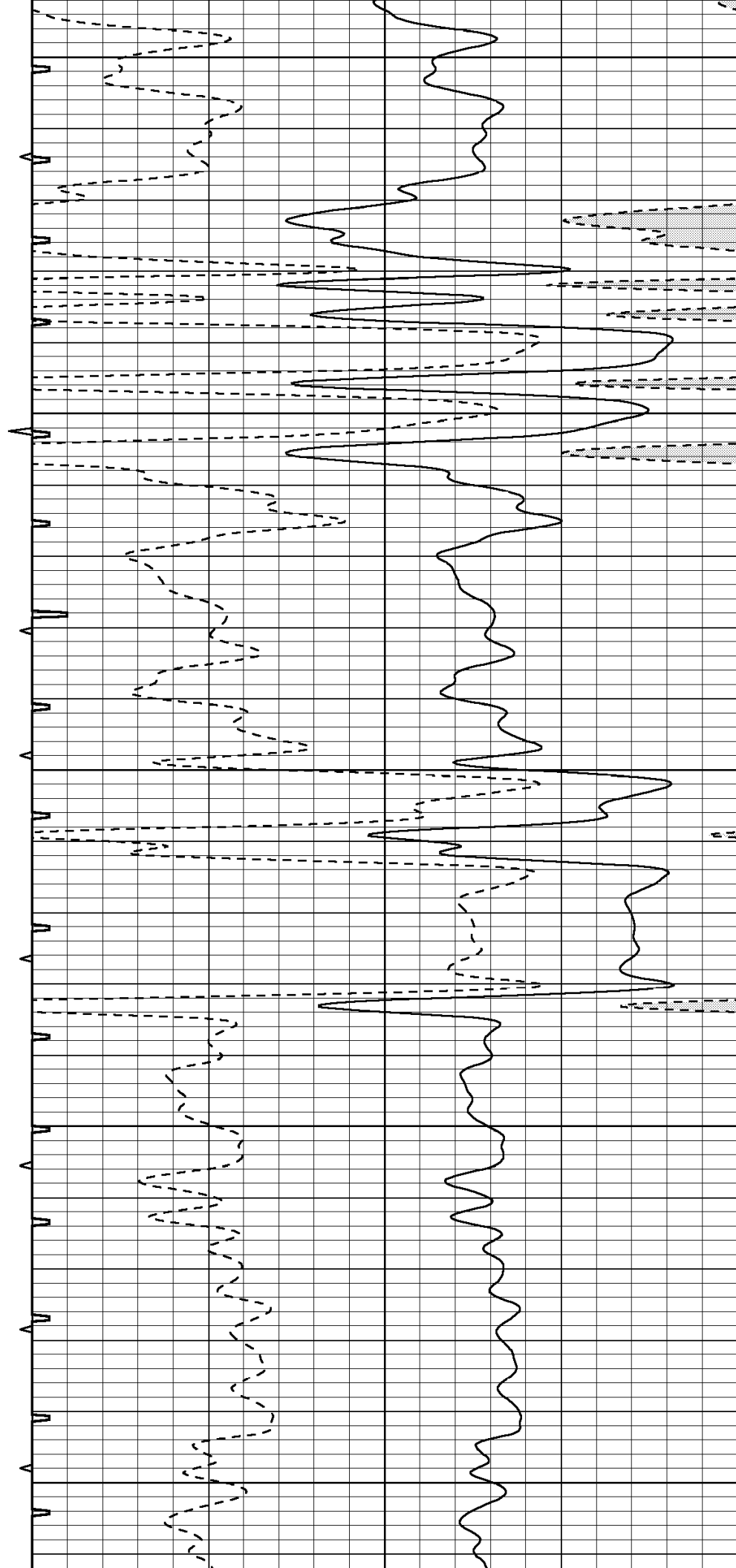
1800

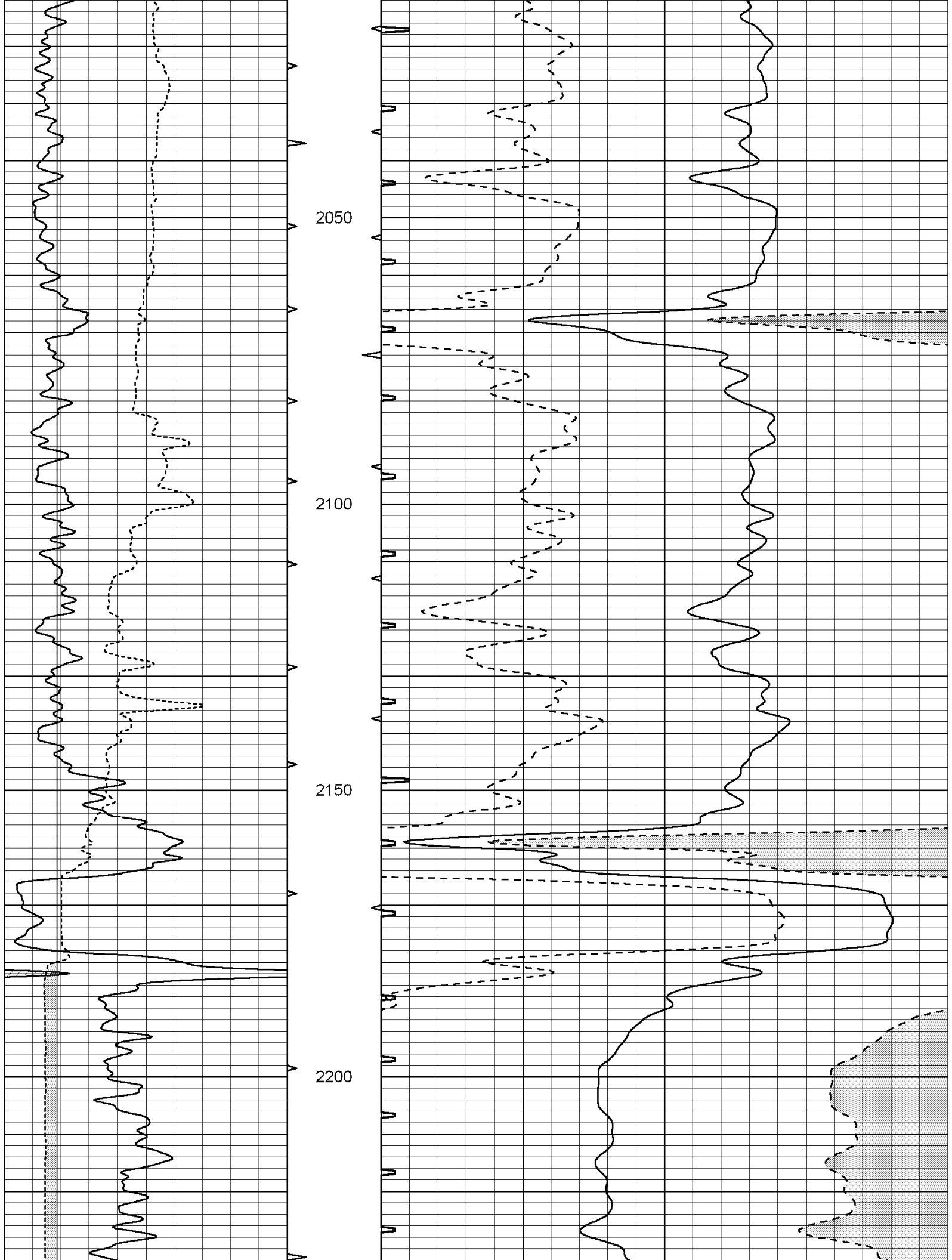
1850

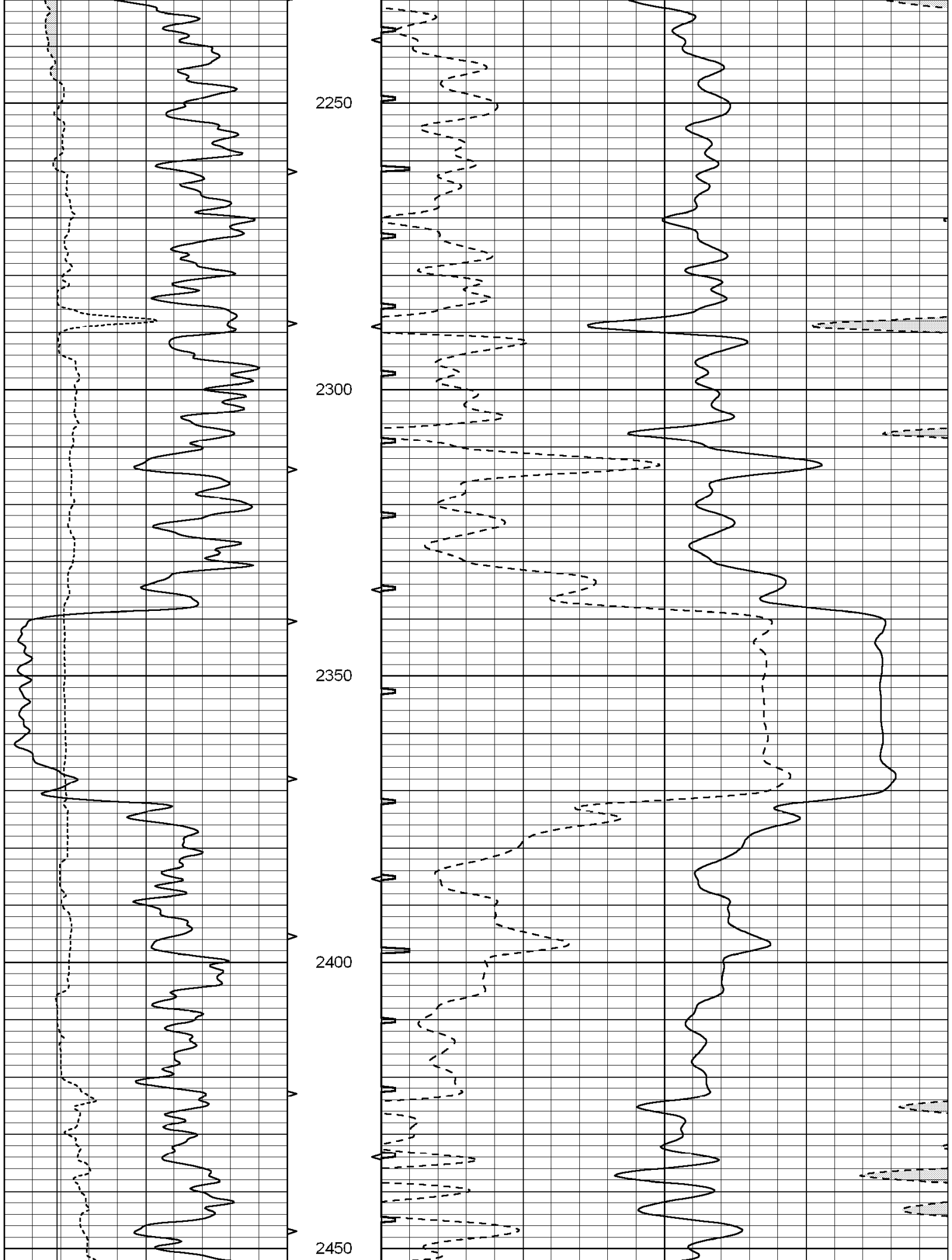
1900

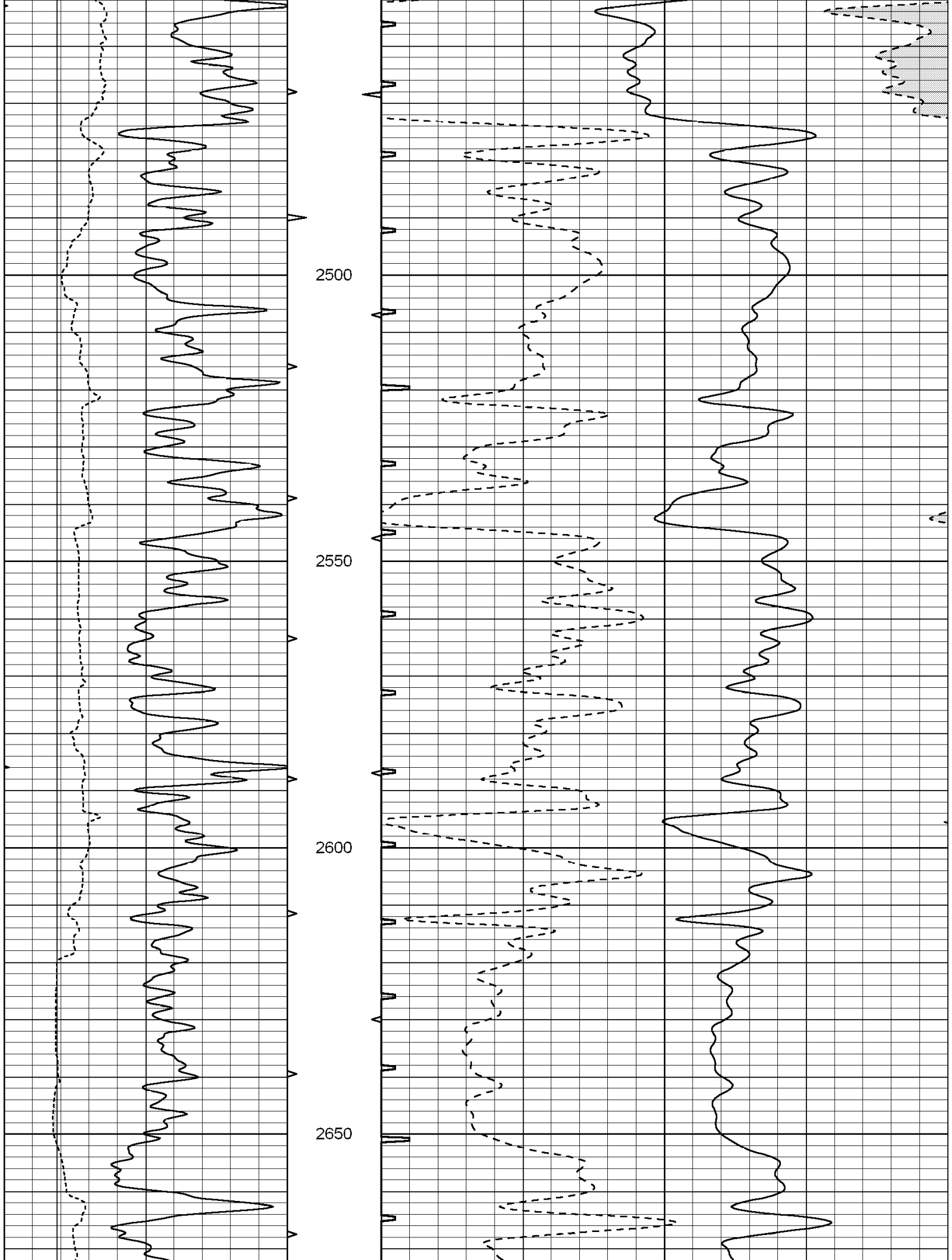
1950

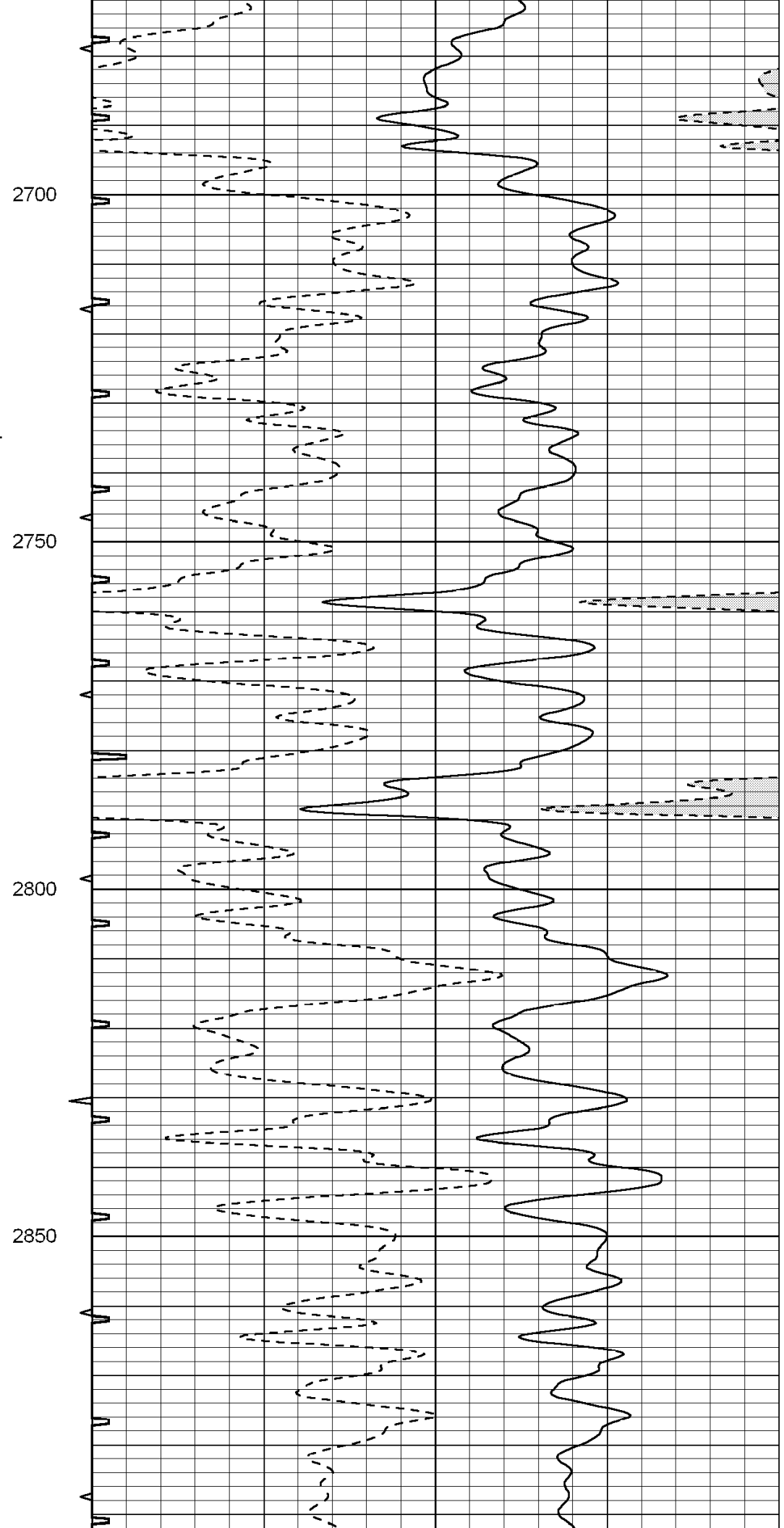
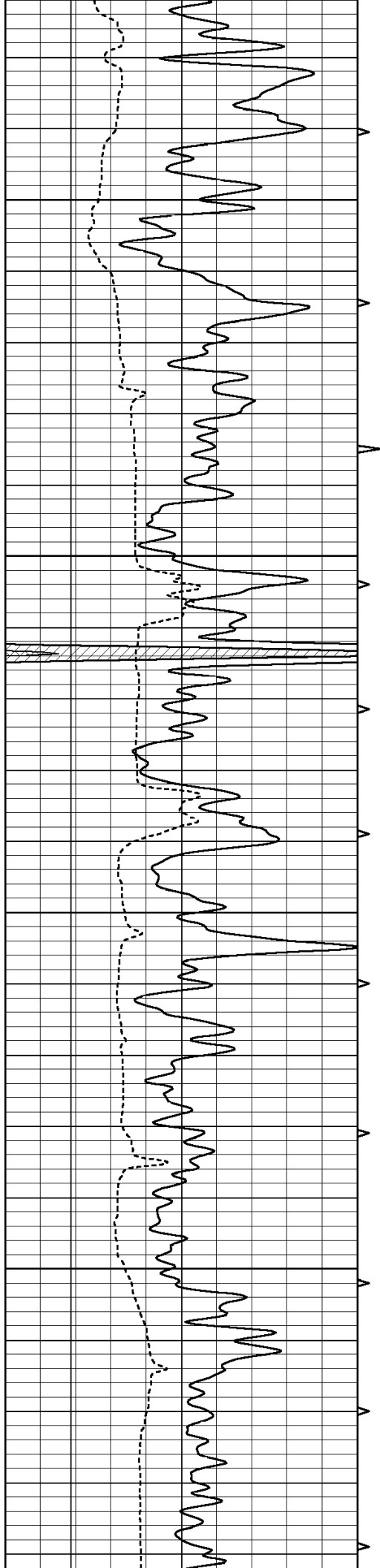
2000

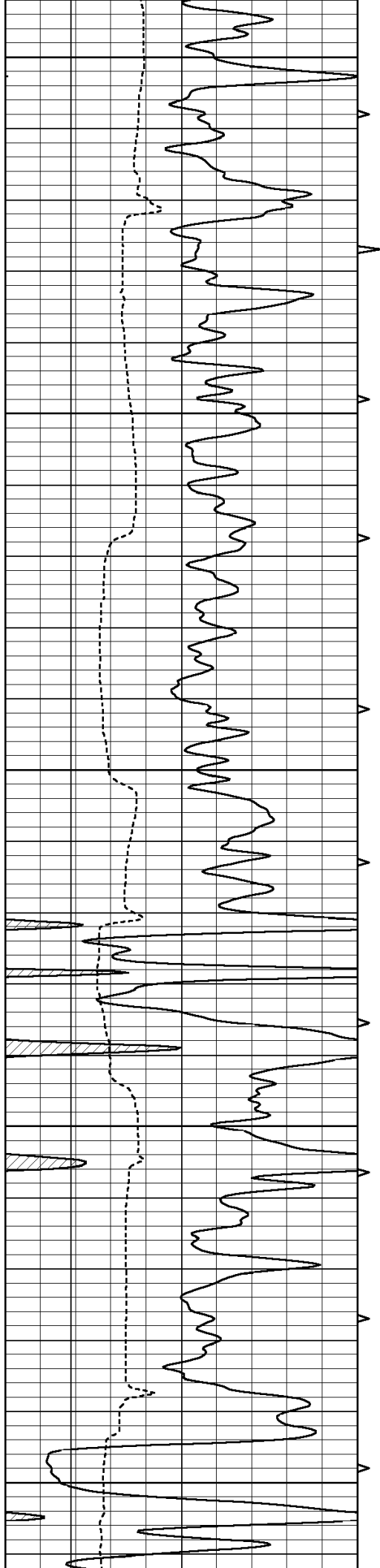












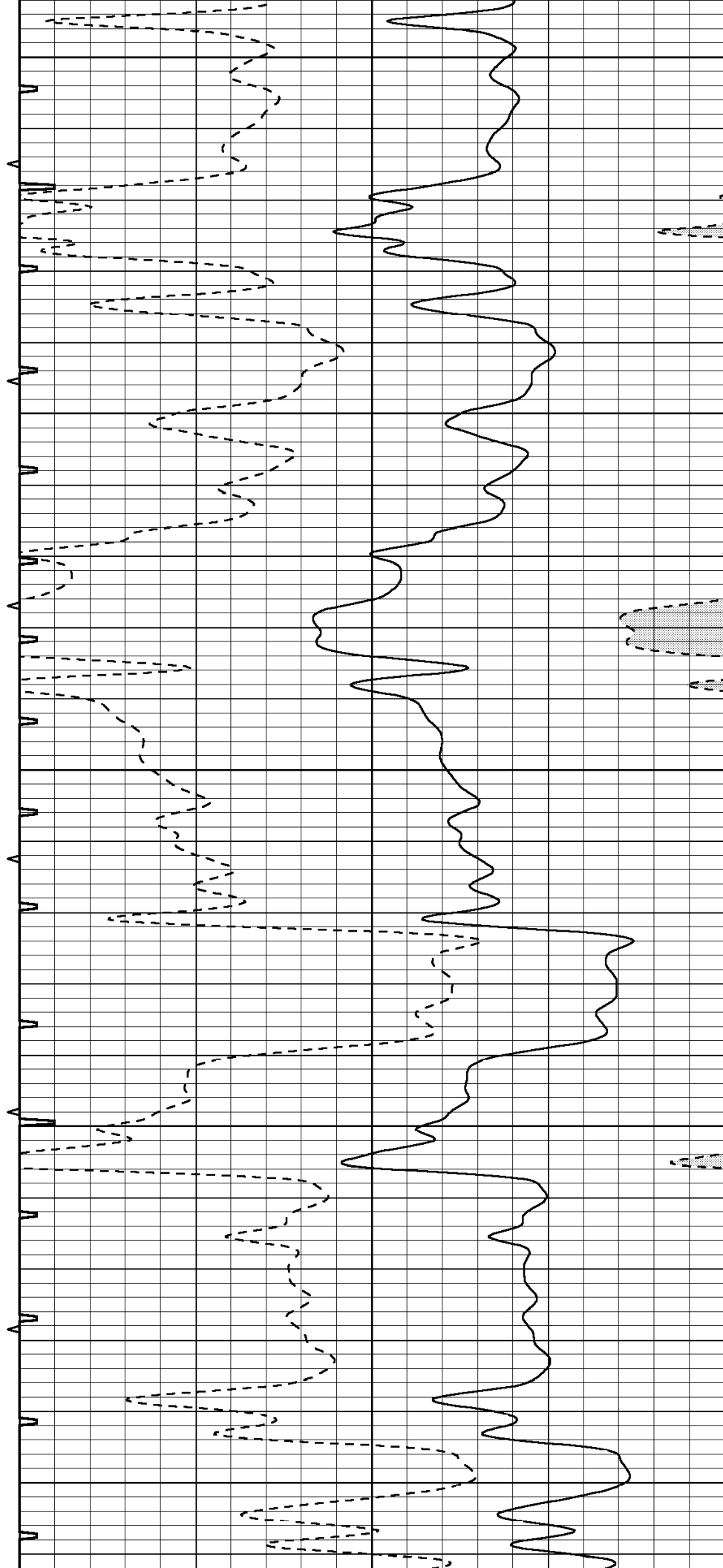
2900

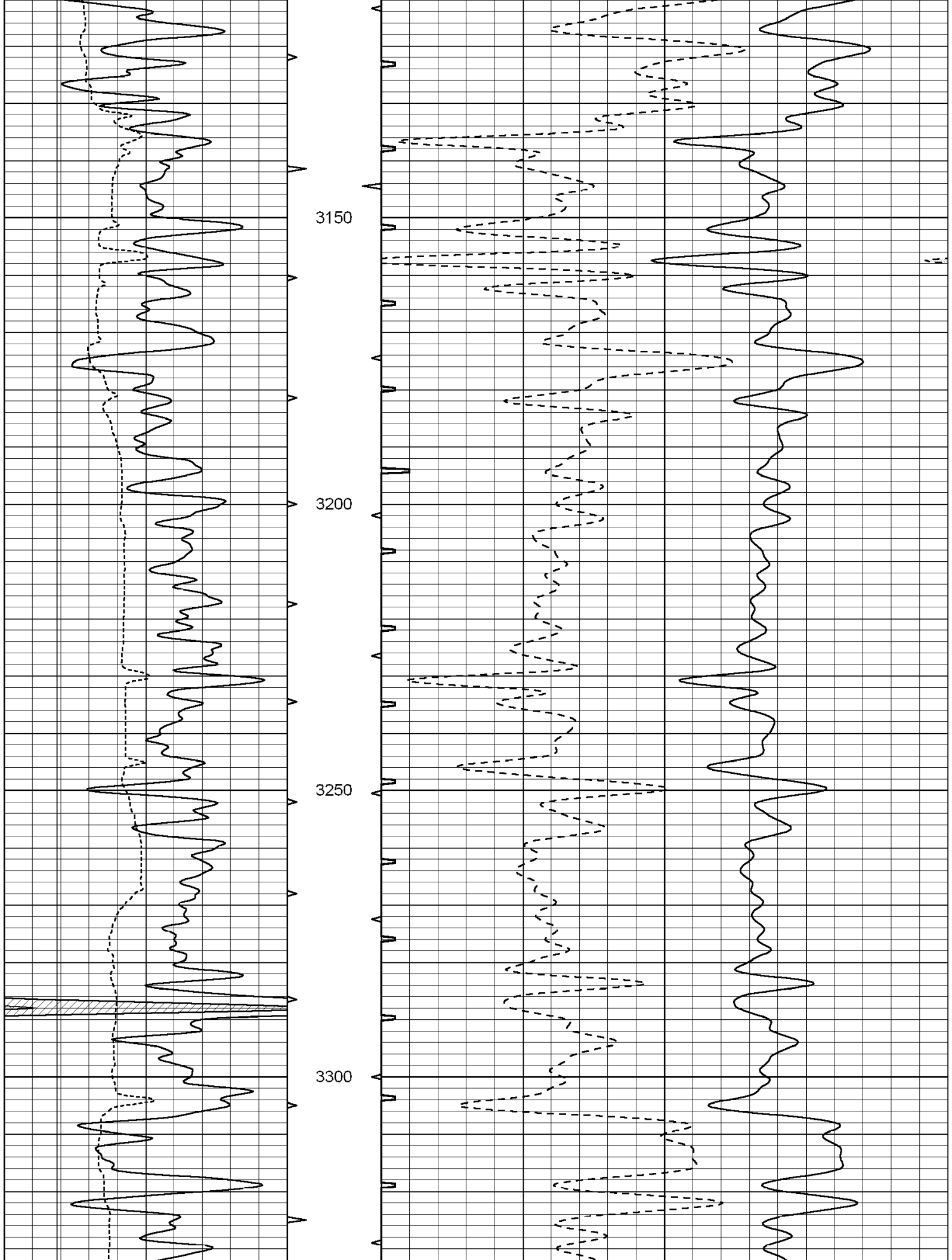
2950

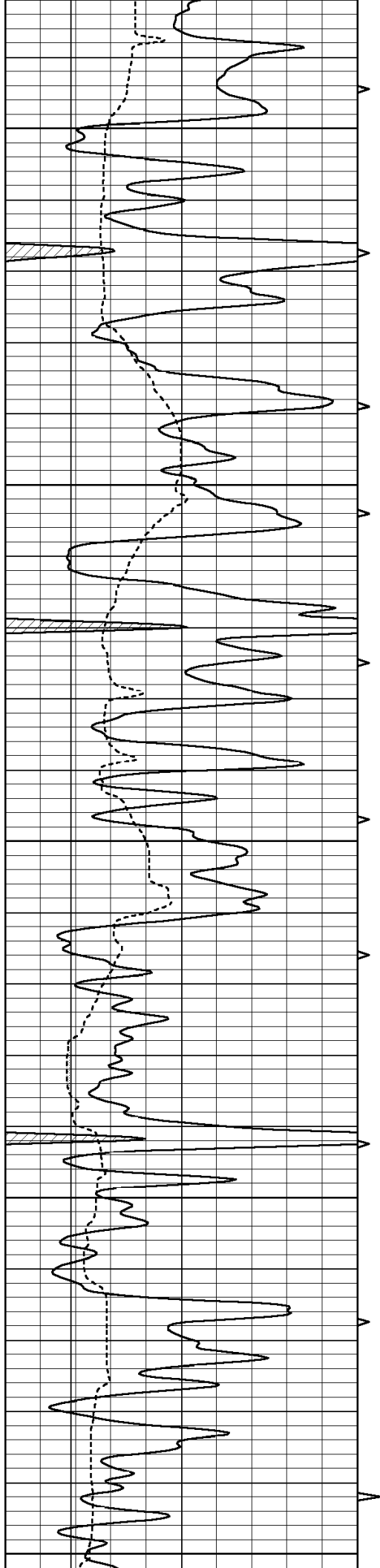
3000

3050

3100







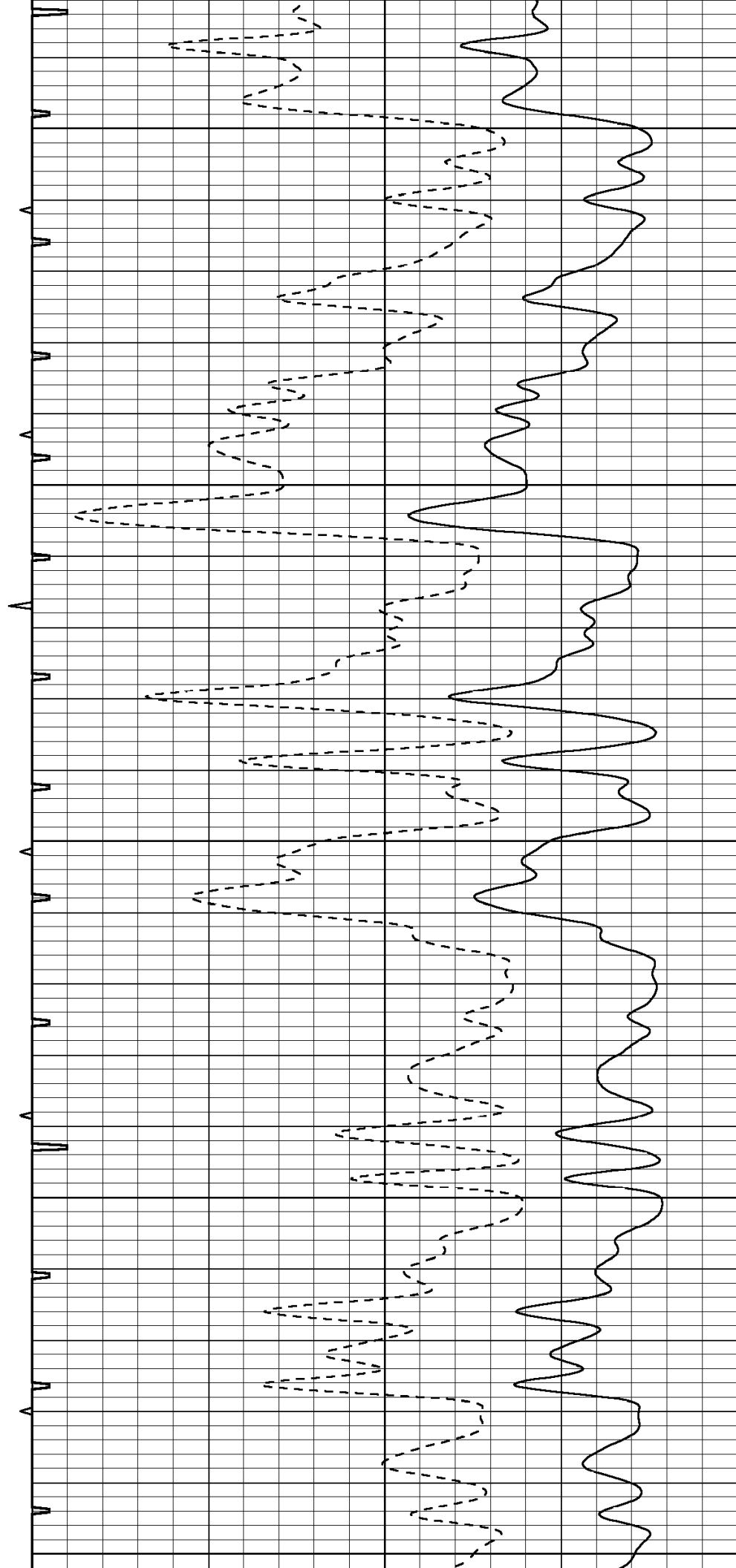
3350

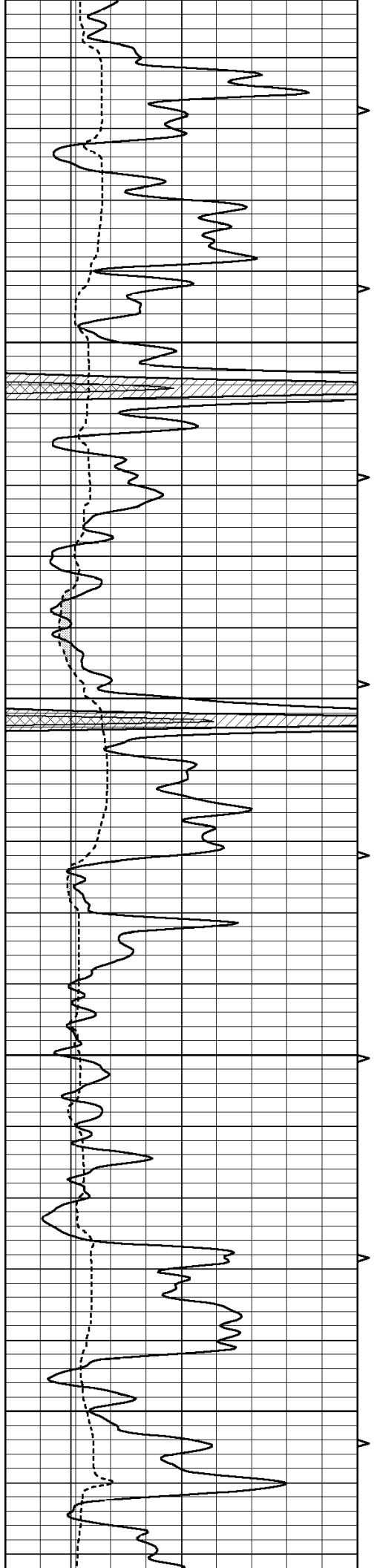
3400

3450

3500

3550



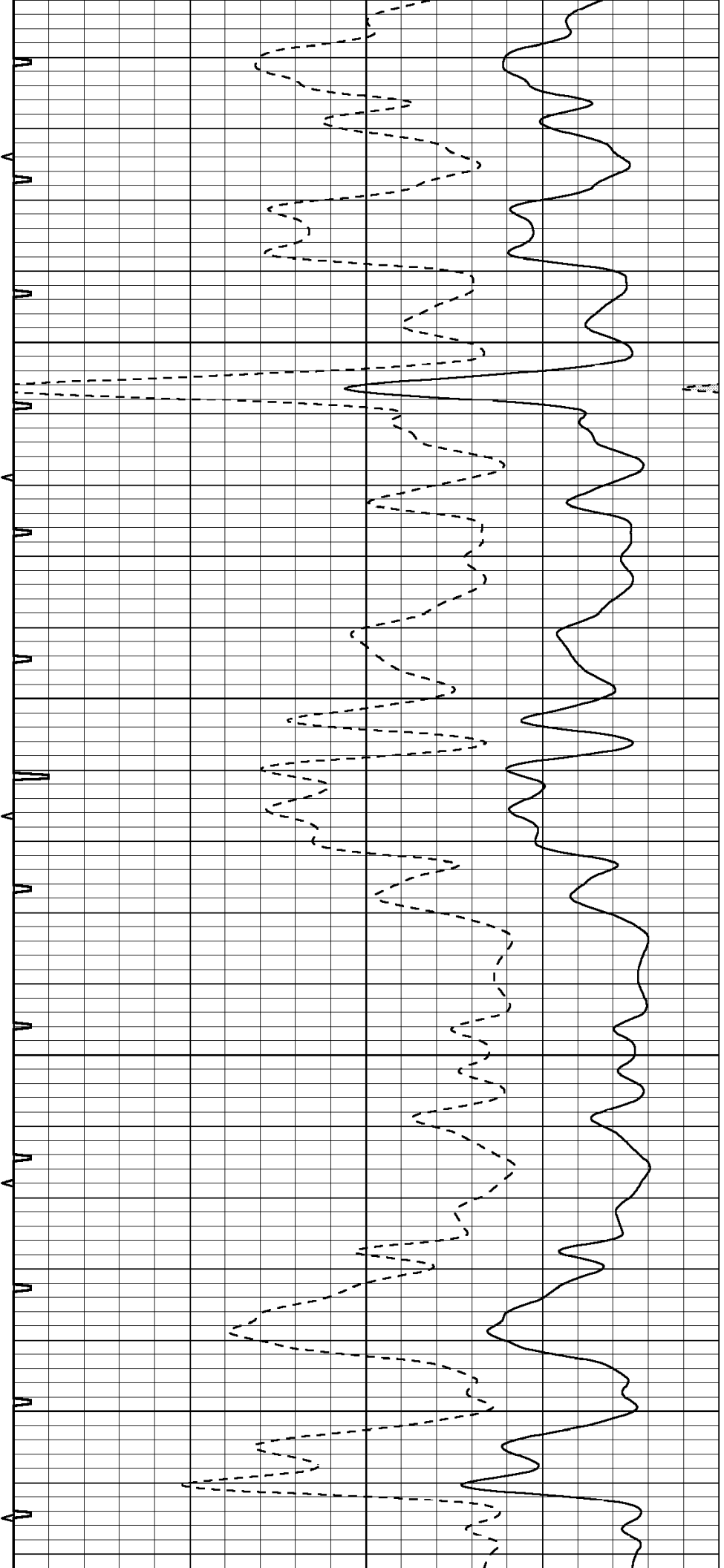


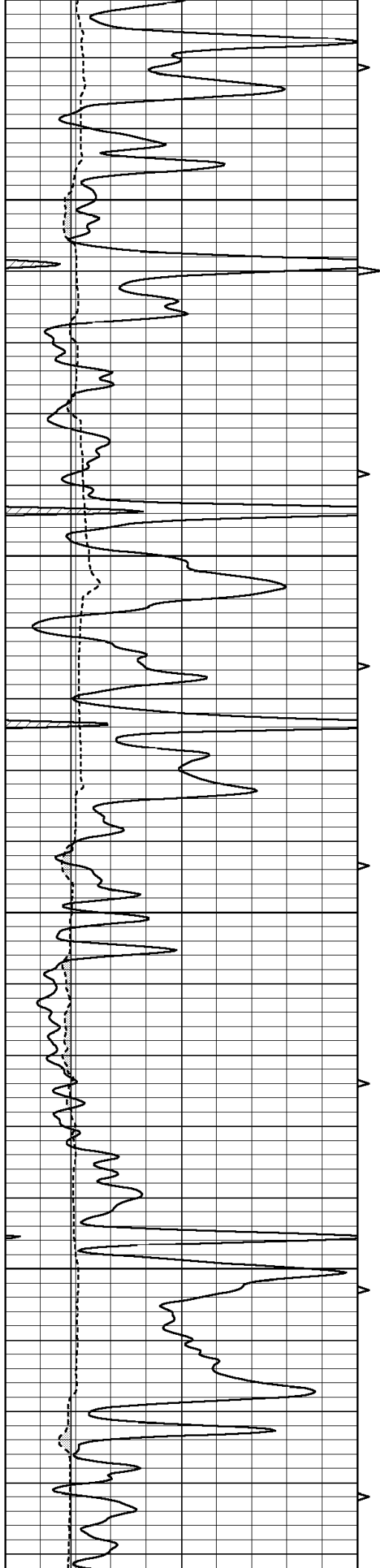
3600

3650

3700

3750



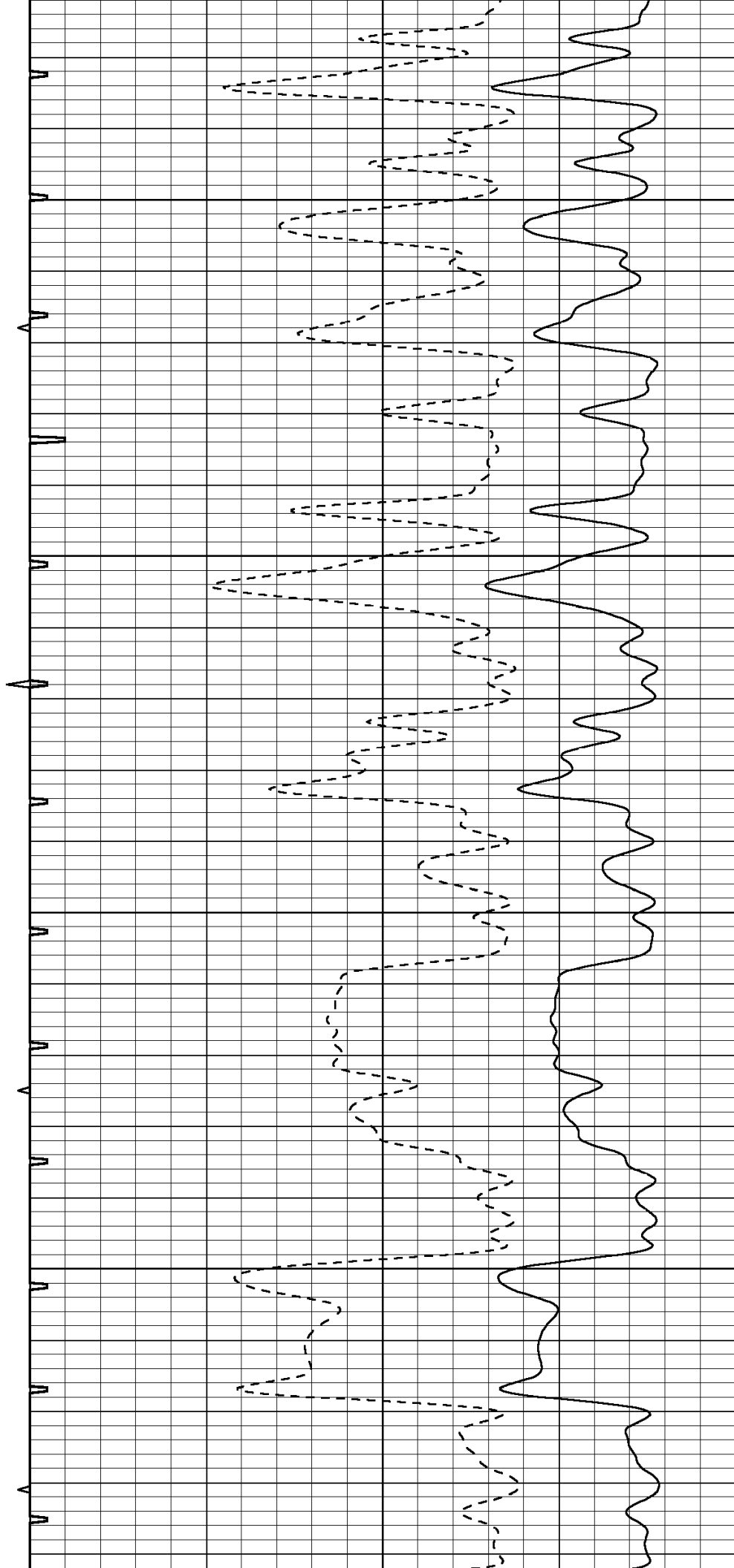


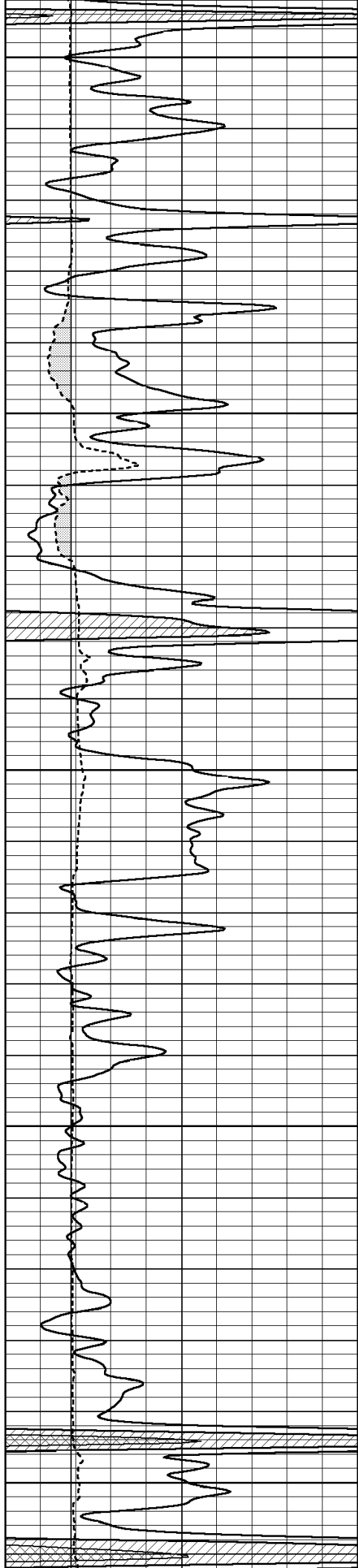
3800

3850

3900

3950





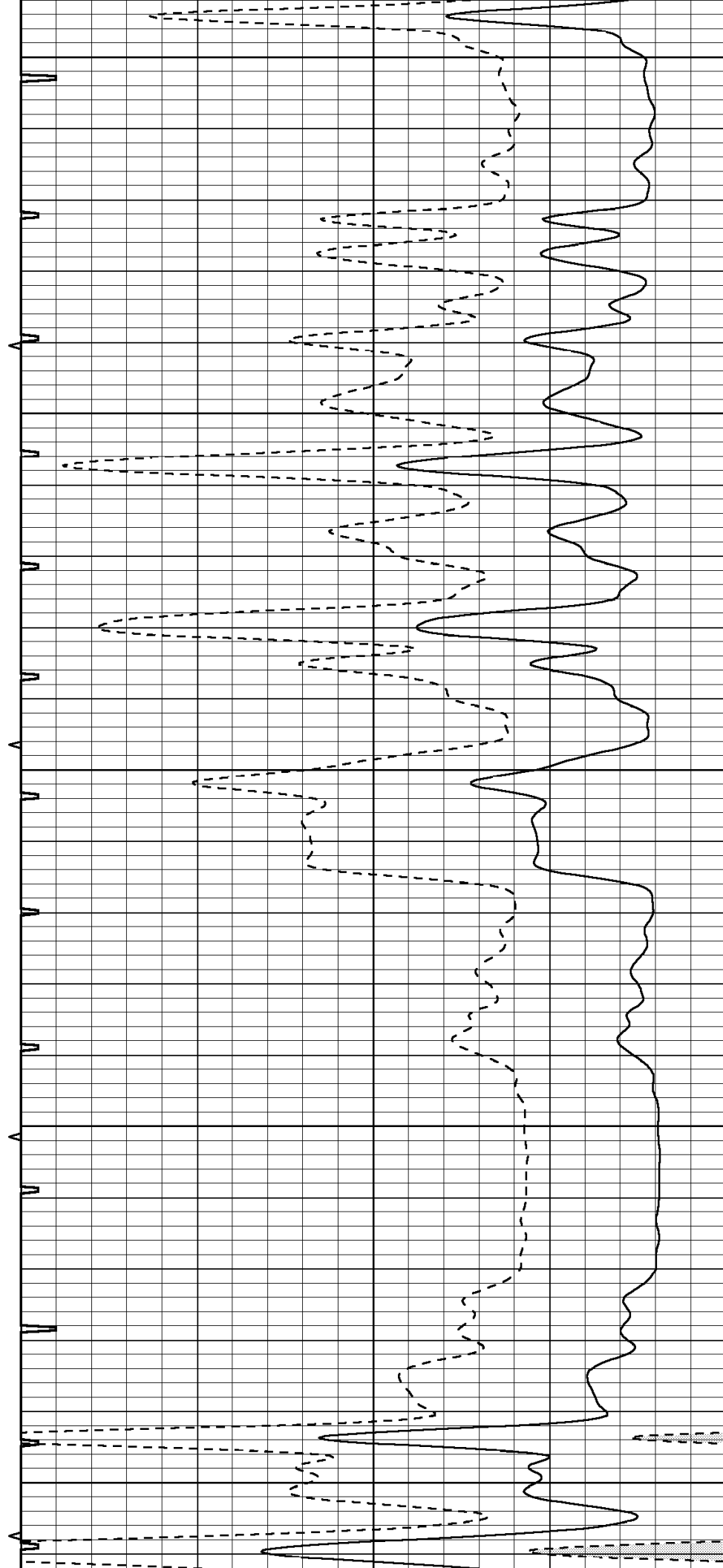
4000

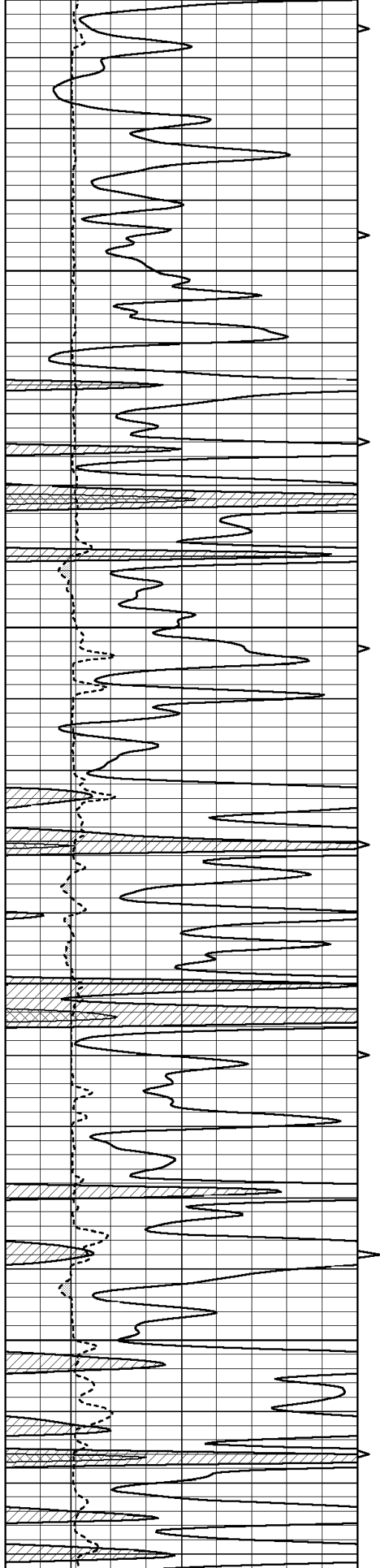
4050

4100

4150

4200



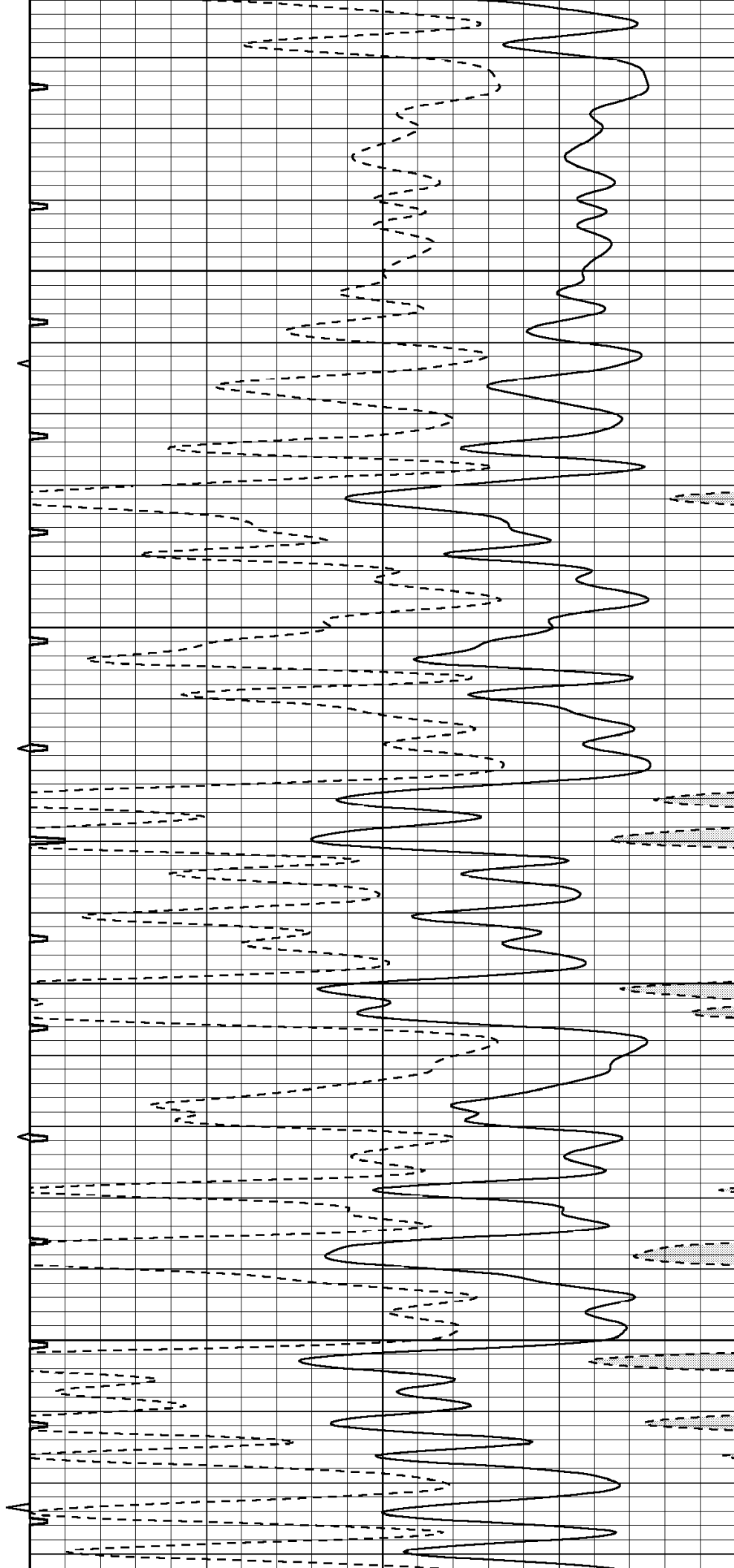


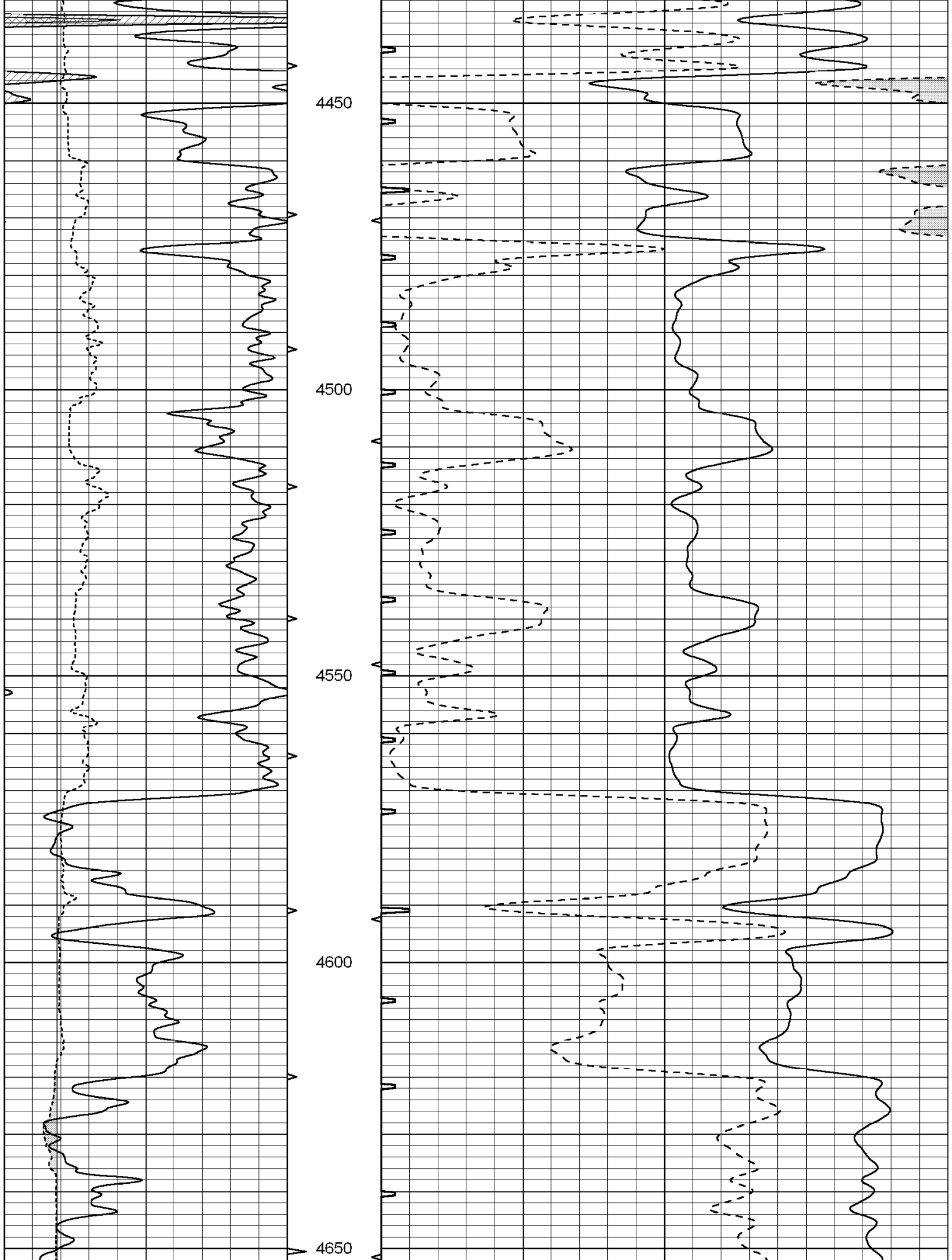
4250

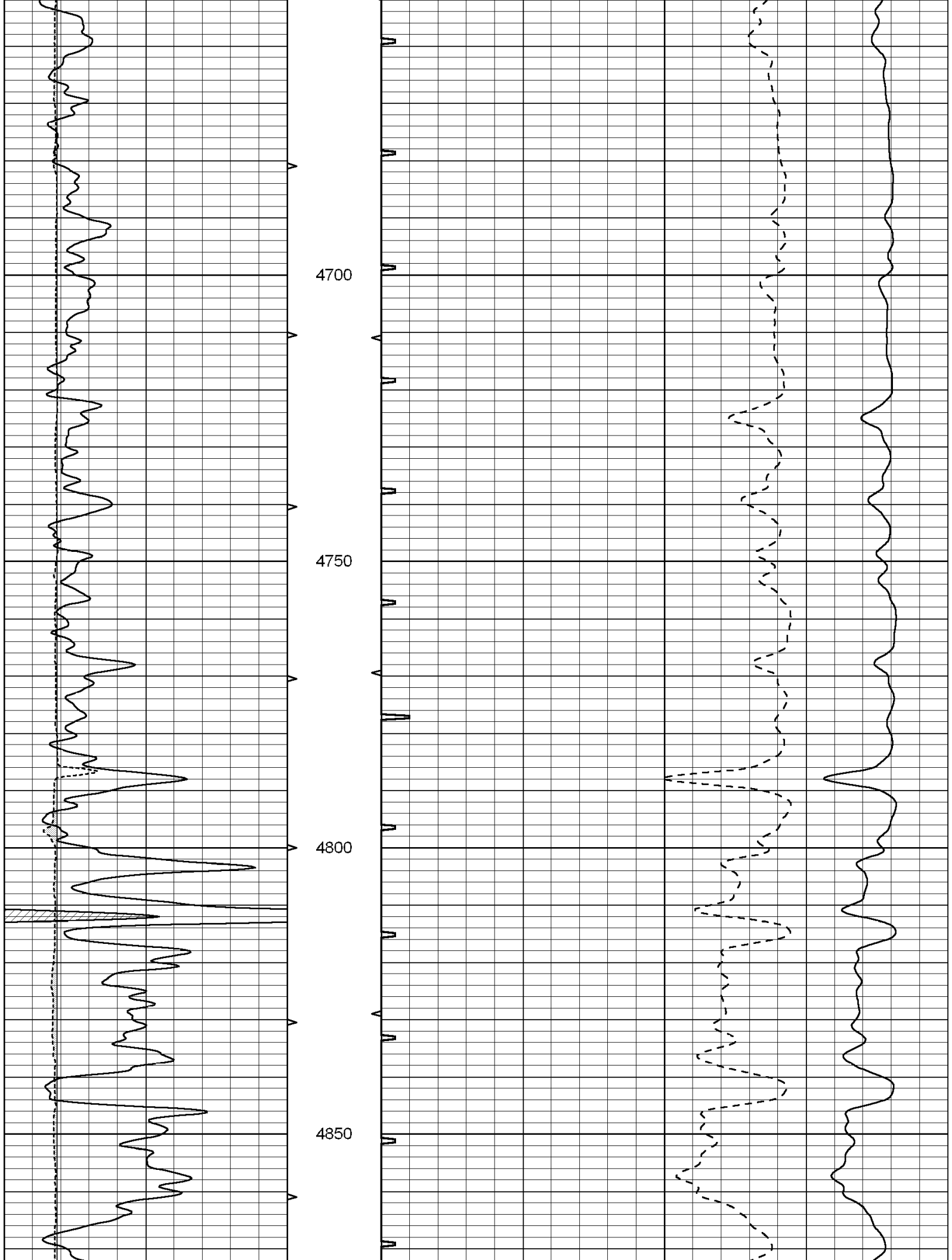
4300

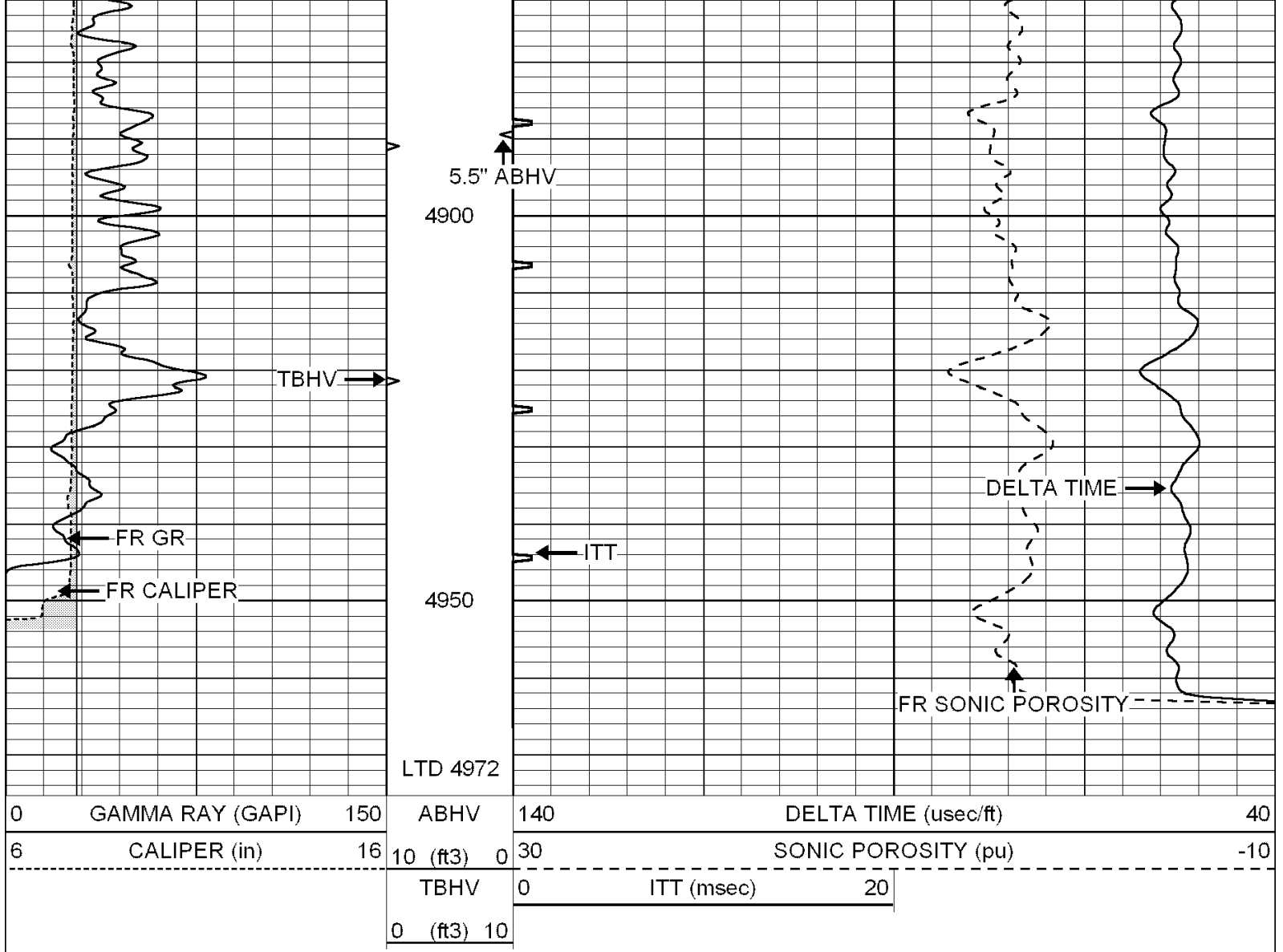
4350

4400









SUPERIOR
Hays,
Kansas

REPEAT SECTION

Database File: 004382ddn.db
 Dataset Pathname: pass5.4
 Presentation Format: slt
 Dataset Creation: Sat Dec 05 20:01:36 2009
 Charted by: Depth in Feet scaled 1:240

0	GAMMA RAY (GAPI)	150	ABHV	140	DELTA TIME (usec/ft)	40
6	CALIPER (in)	16	10 (ft3) 0	30	SONIC POROSITY (pu)	-10
			TBHV	0	ITT (msec)	20
			0 (ft3) 10			

