



CEMENT BOND
LOG
1000 PSI

Company XTO Energy Inc.
Well Hill Ranch 01-14
Field Purgatorie River
County Las Animas State CO

Location: API # : 05 071 09558 00

934' FSL & 1960' FWL

SEC 1 TWP 35S RGE 68W

Permanent Datum Ground Level Elevation 8529'
Log Measured From Ground Level
Drilling Measured From Ground Level

Other Services
Elevation
K.B. -----
D.F. -----
G.L. 8529'

Date 2/1/10

| | | | |
|------------------------|------------------|--|--|
| Run Number | One | | |
| Depth Driller | 2198' | | |
| Depth Logger | 2130' | | |
| Bottom Logged Interval | 2125' | | |
| Top Log Interval | Surface Casing | | |
| Open Hole Size | 7 7/8" | | |
| Type Fluid | water | | |
| Density / Viscosity | /// | | |
| Max. Recorded Temp. | 124F | | |
| Estimated Cement Top | Surf. | | |
| Time Well Ready | 12:30 | | |
| Time Logger on Bottom | 12:45 | | |
| Equipment Number | 697 | | |
| Location | Trinidad | | |
| Recorded By | Worley | | |
| Witnessed By | Mr. Eddie Haught | | |

| Borehole Record | | | | Tubing Record | | | |
|-----------------|------|----|------|---------------|------|----|--|
| Bit | From | To | Size | Weight | From | To | |

| | | | | |
|-------------------|--------|--------|-----|--------|
| Casing Record | Size | Wgt/Ft | Top | Bottom |
| Surface String | 8 5/8" | | 00 | 453' |
| Prot. String | | | | |
| Production String | 5 1/2" | | 00 | 2130' |
| Liner | | | | |

<<< Fold Here >>>

All interpretations are opinions based on inferences from electrical or other measurements and we cannot and do not guarantee the accuracy or correctness of any interpretation, and we shall not, except in the case of gross or willful negligence on our part, be liable or responsible for any loss, costs, damages, or expenses incurred or sustained by anyone resulting from any interpretation made by any of our officers, agents or employees. These interpretations are also subject to our general terms and conditions set out in our current Price Schedule.

Comments

XTO Hill stay on main road past Dead Horse, stay on main road past Beige Tanks, down thru Alamosa Canyon take hard left at Big Rocks, drive by HR 1-2 and HR 1-5, take right, left at T, next right to location.

CBL ran under 1000 PSI.

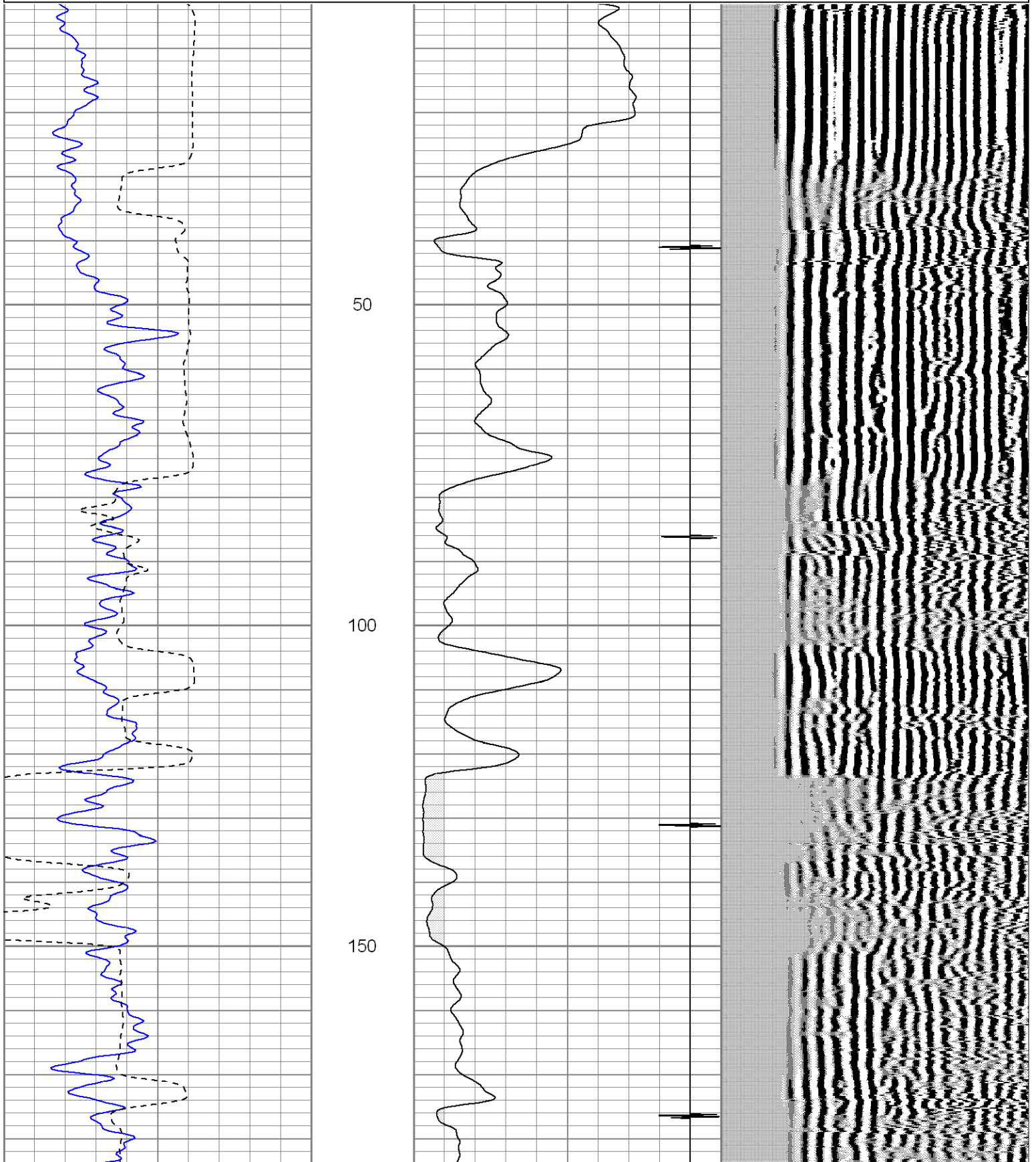


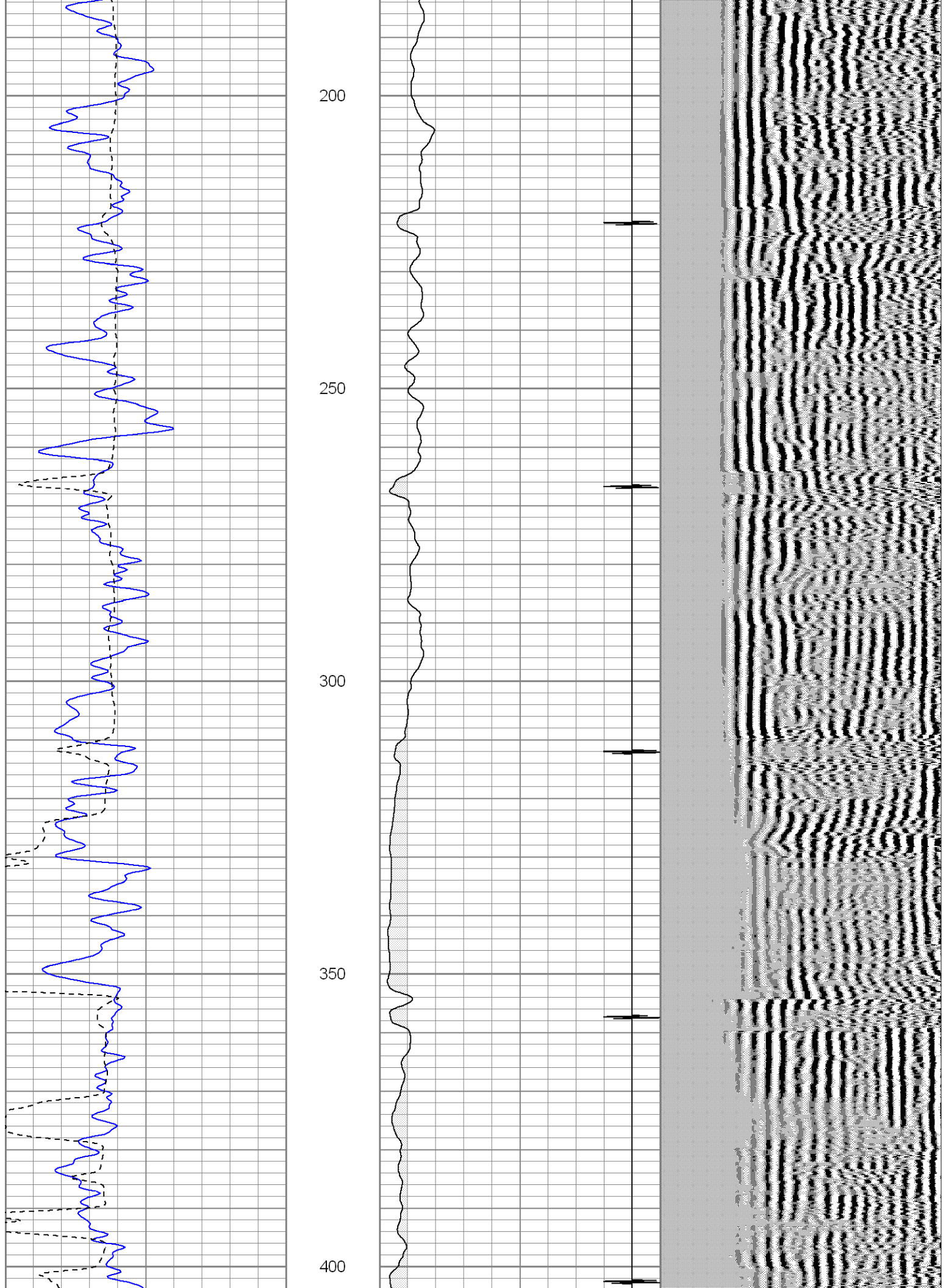
Main Pass 1000 PSI

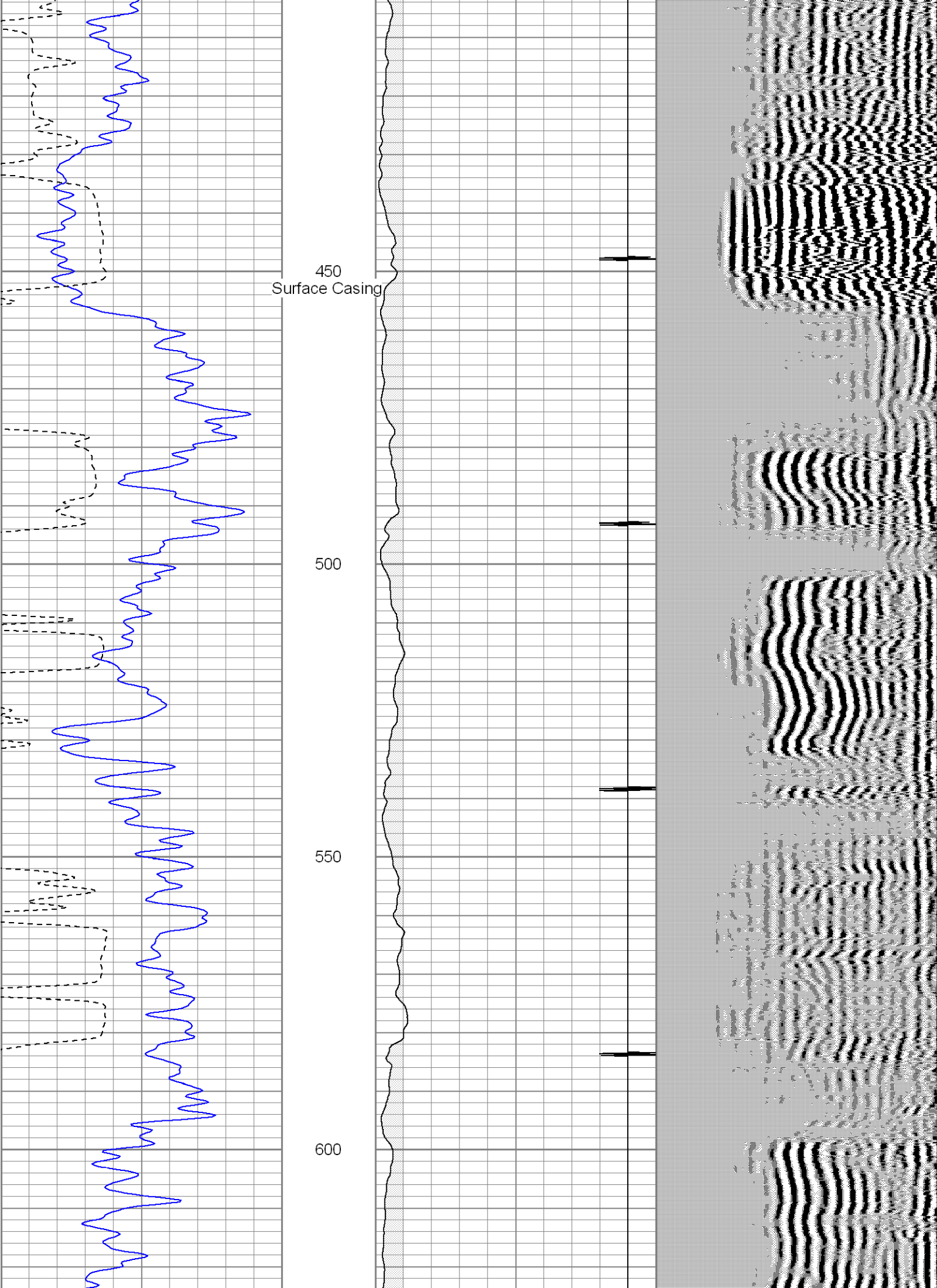
Database File: hillranch1-14b.db
Dataset Pathname: pass2.2
Presentation Format: cblsec
Dataset Creation: Mon Feb 01 13:55:16 2010 by Calc Open-Cased 071220
Charted by: Depth in Feet scaled 1:240

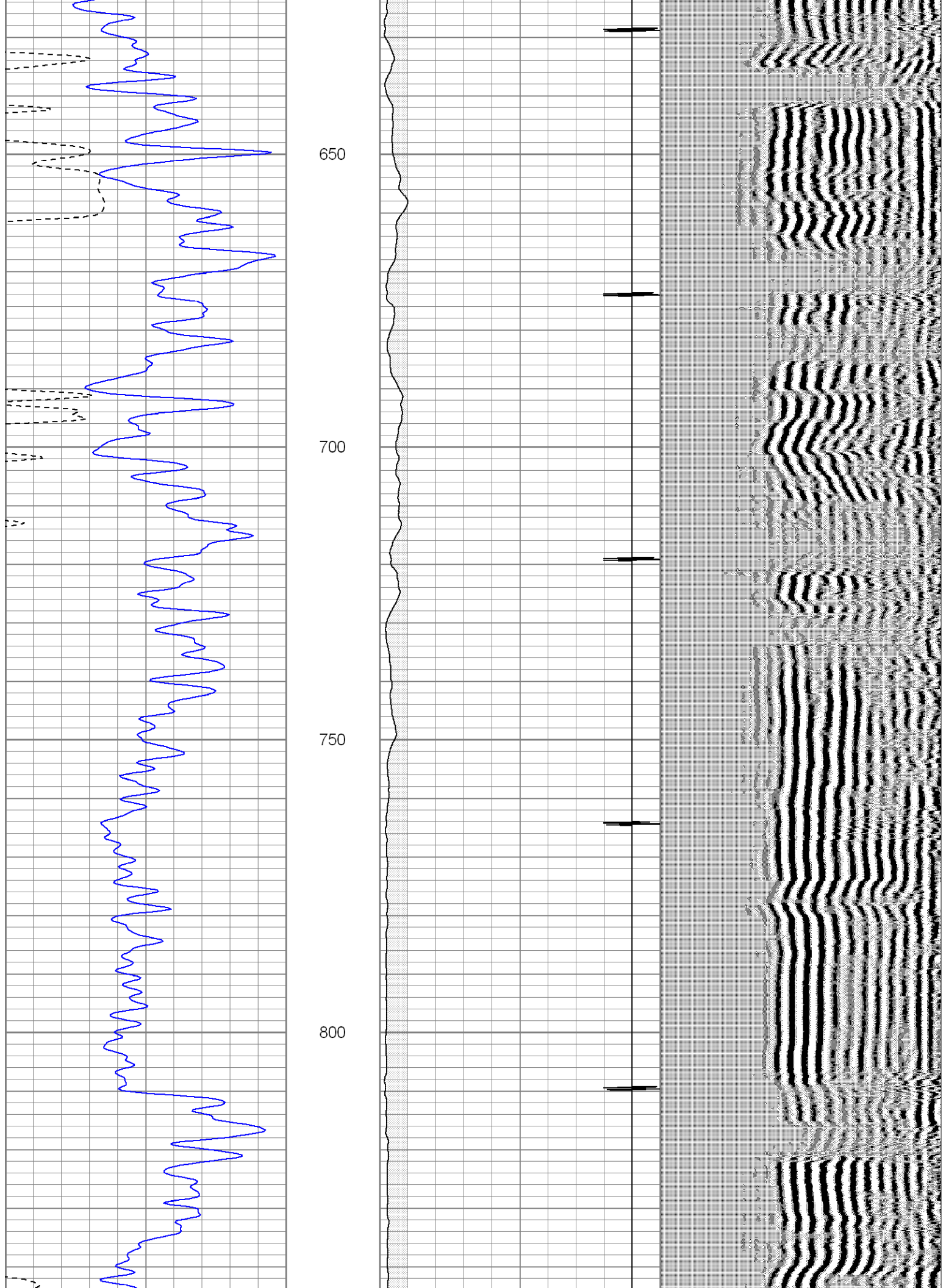
| | | |
|-------|------------|-----|
| 0 | GR (GAPI) | 200 |
| 200 | GR (GAPI) | 400 |
| 400 | TT3 (usec) | 200 |
| ----- | | |

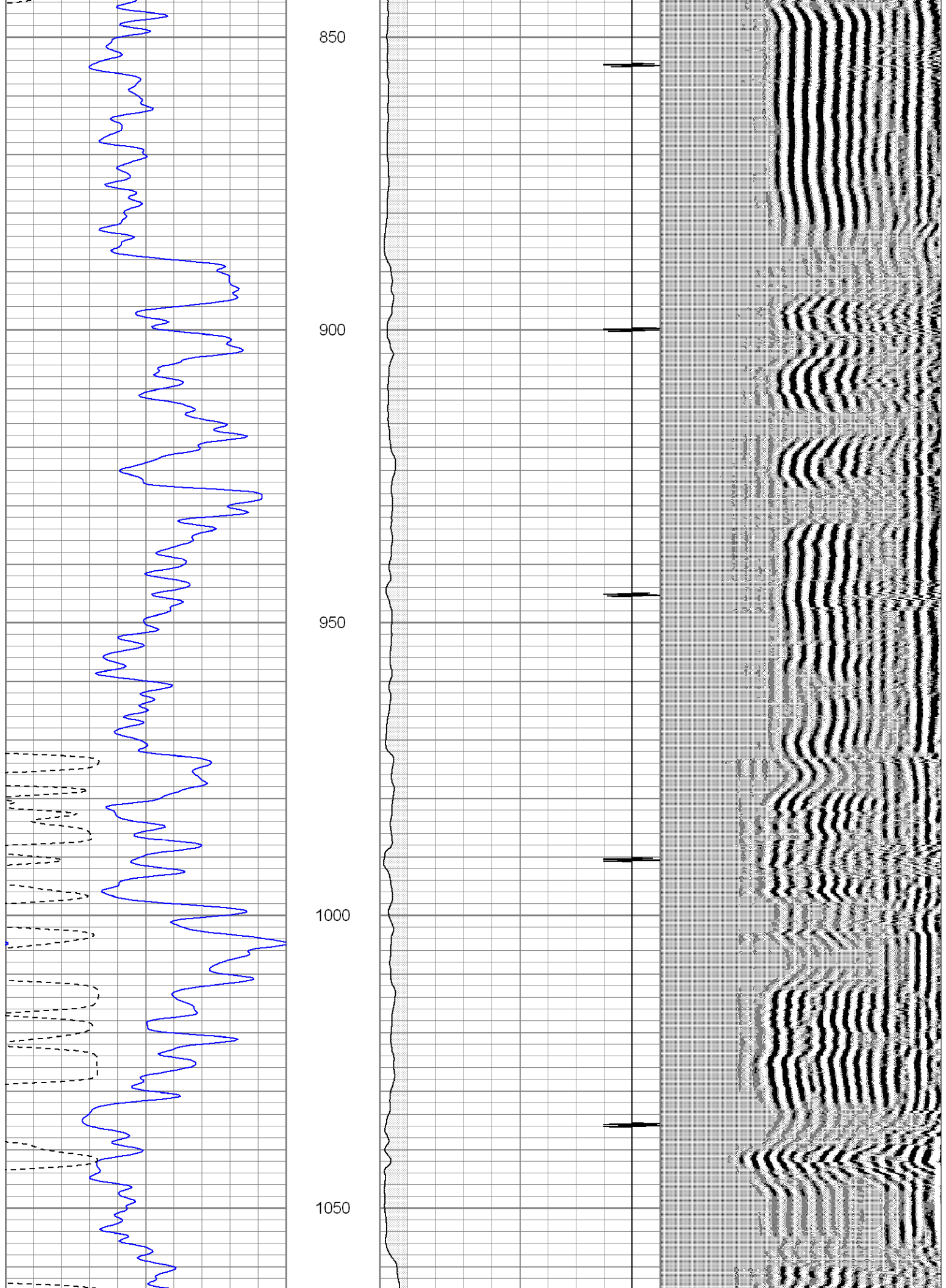
| | | | | | |
|----|-----------|-----|-----|-----|------|
| 18 | CCL | -2 | 200 | VDL | 1200 |
| 0 | AMP3 (mV) | 100 | | | |

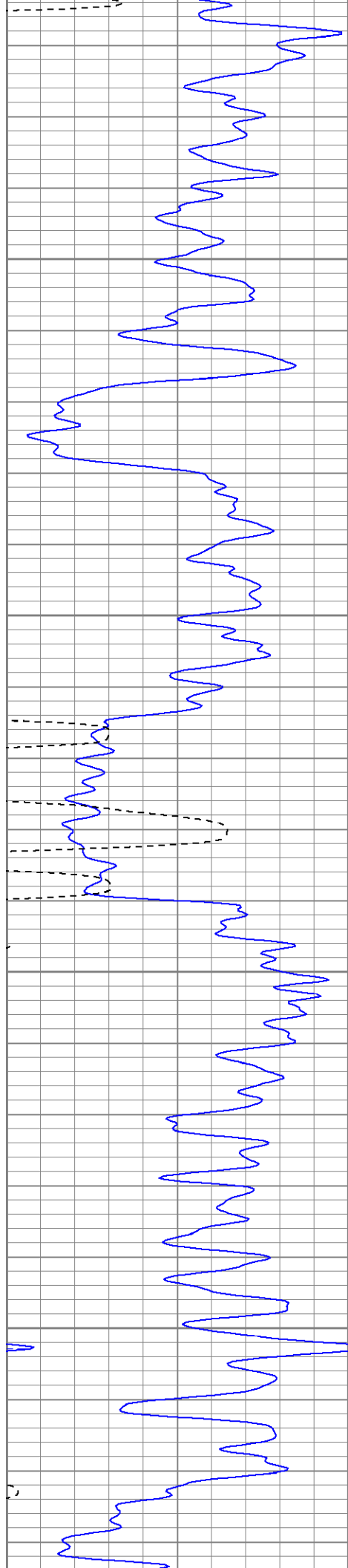










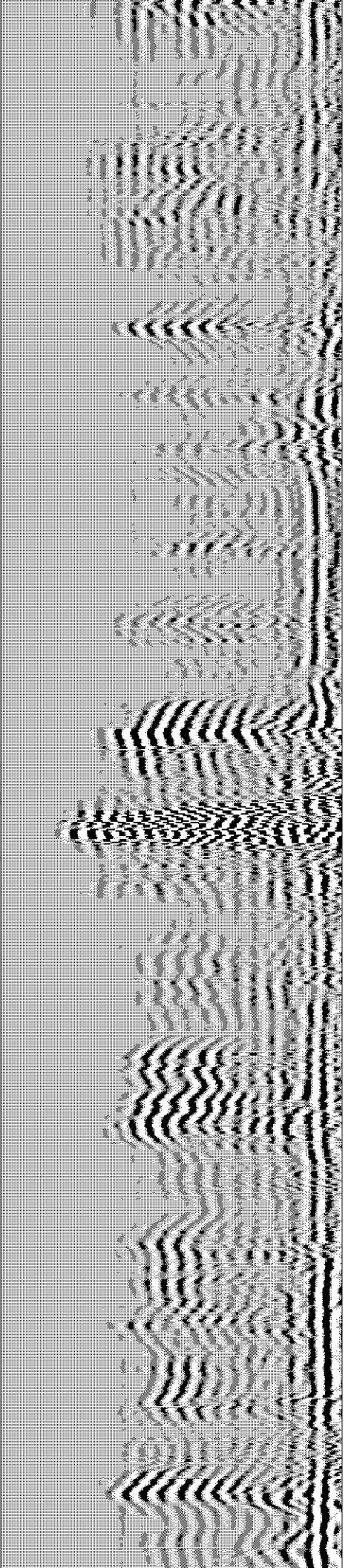
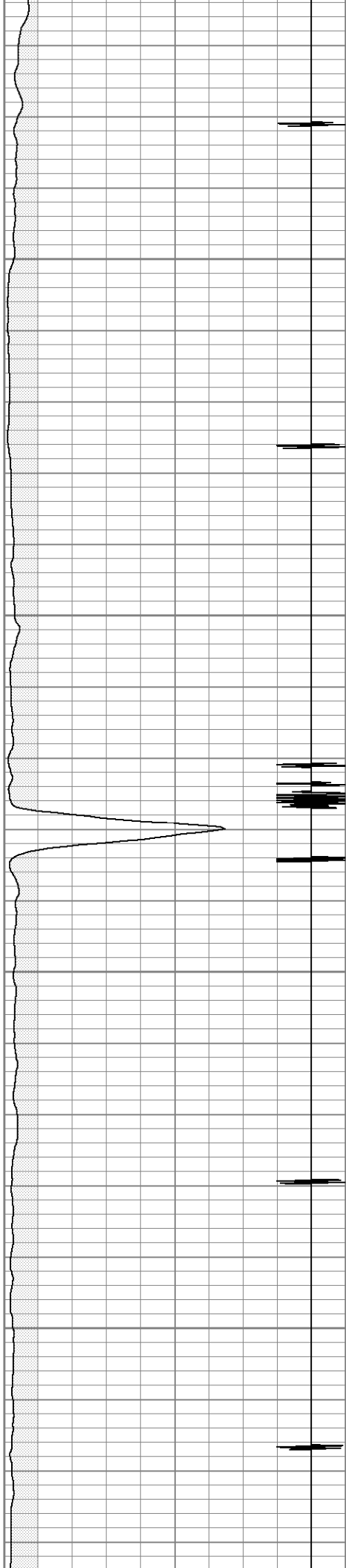


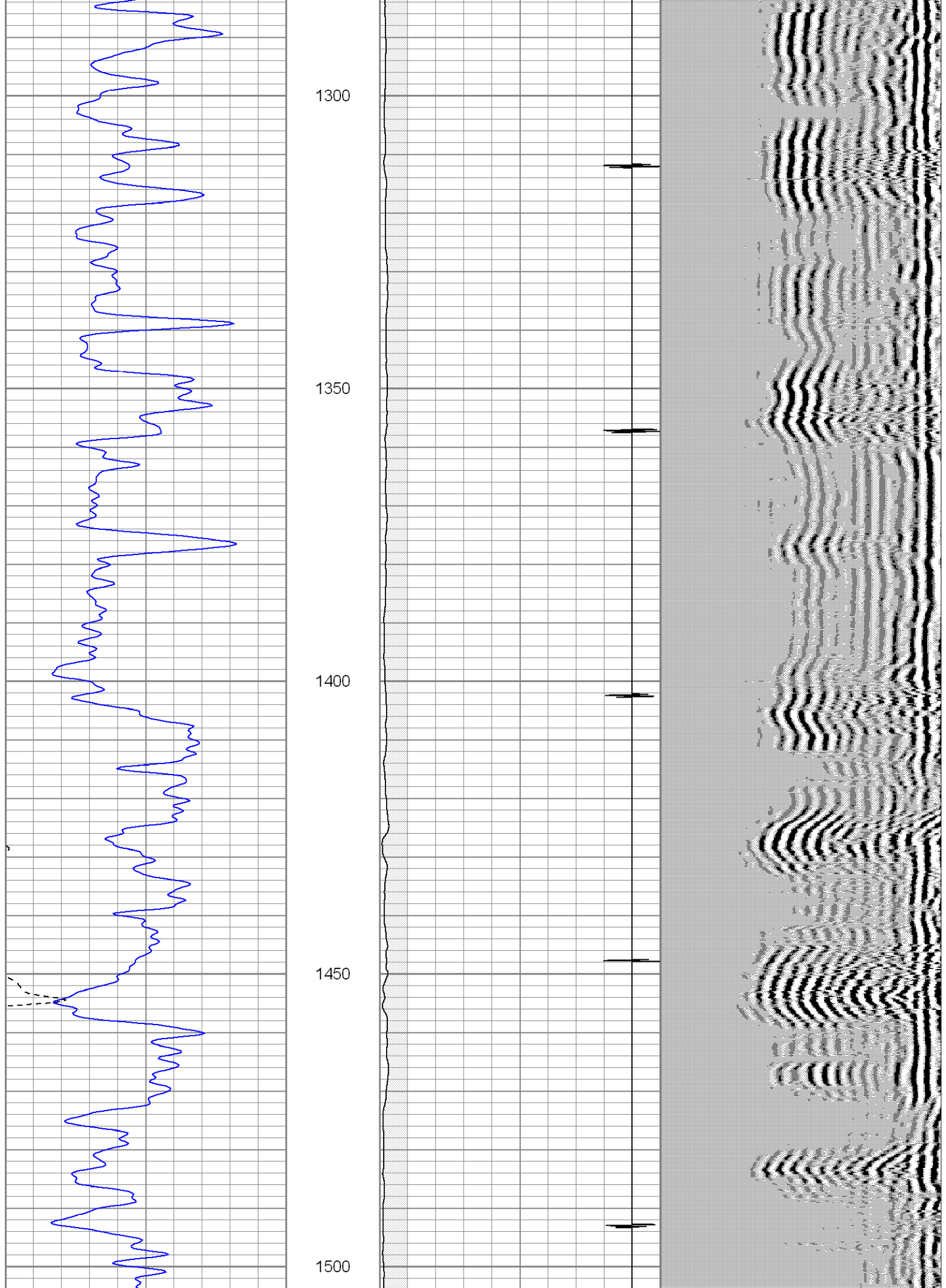
1100

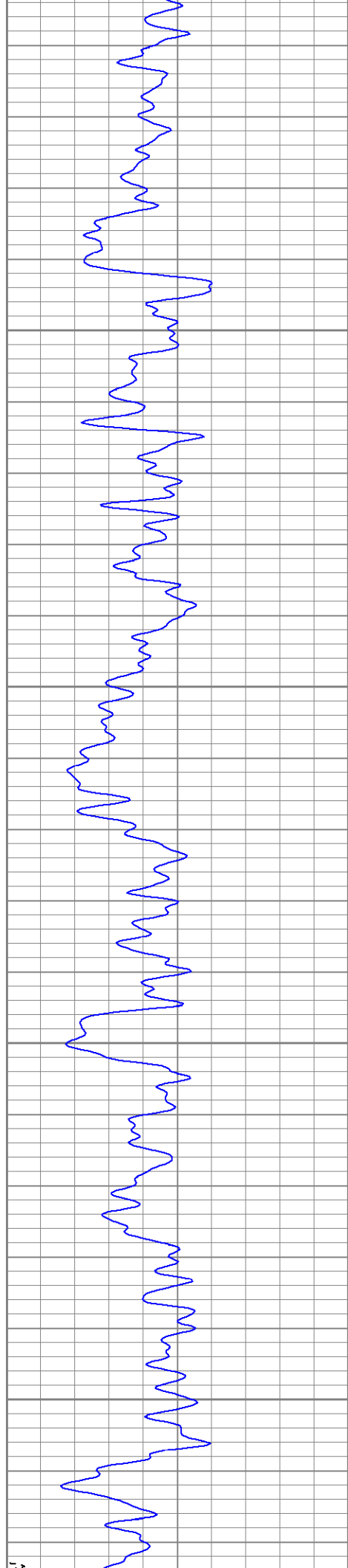
1150

1200

1250





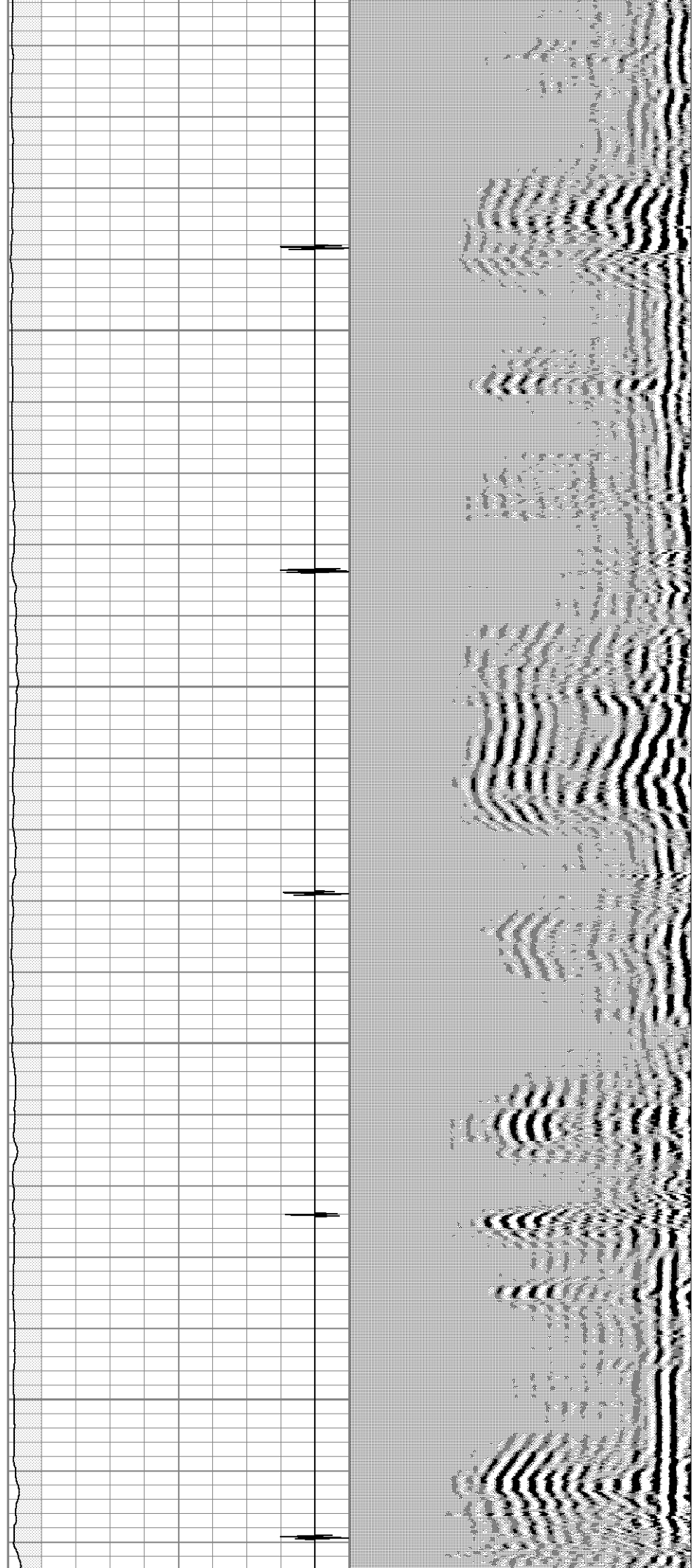


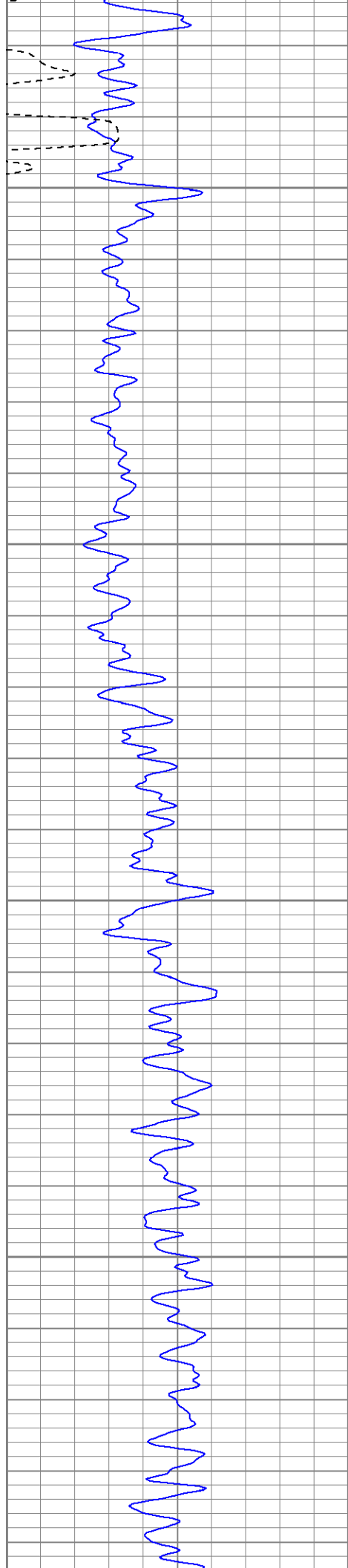
1550

1600

1650

1700



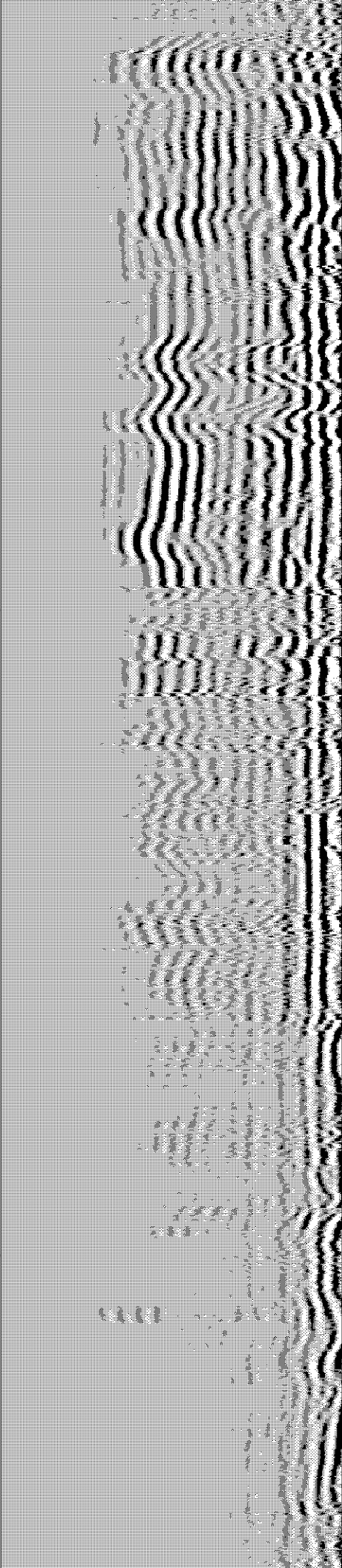
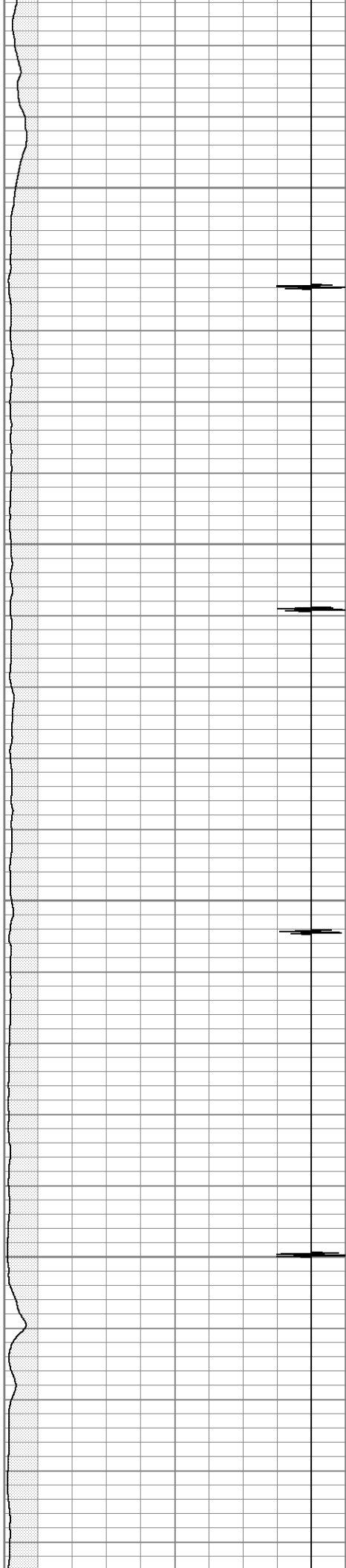


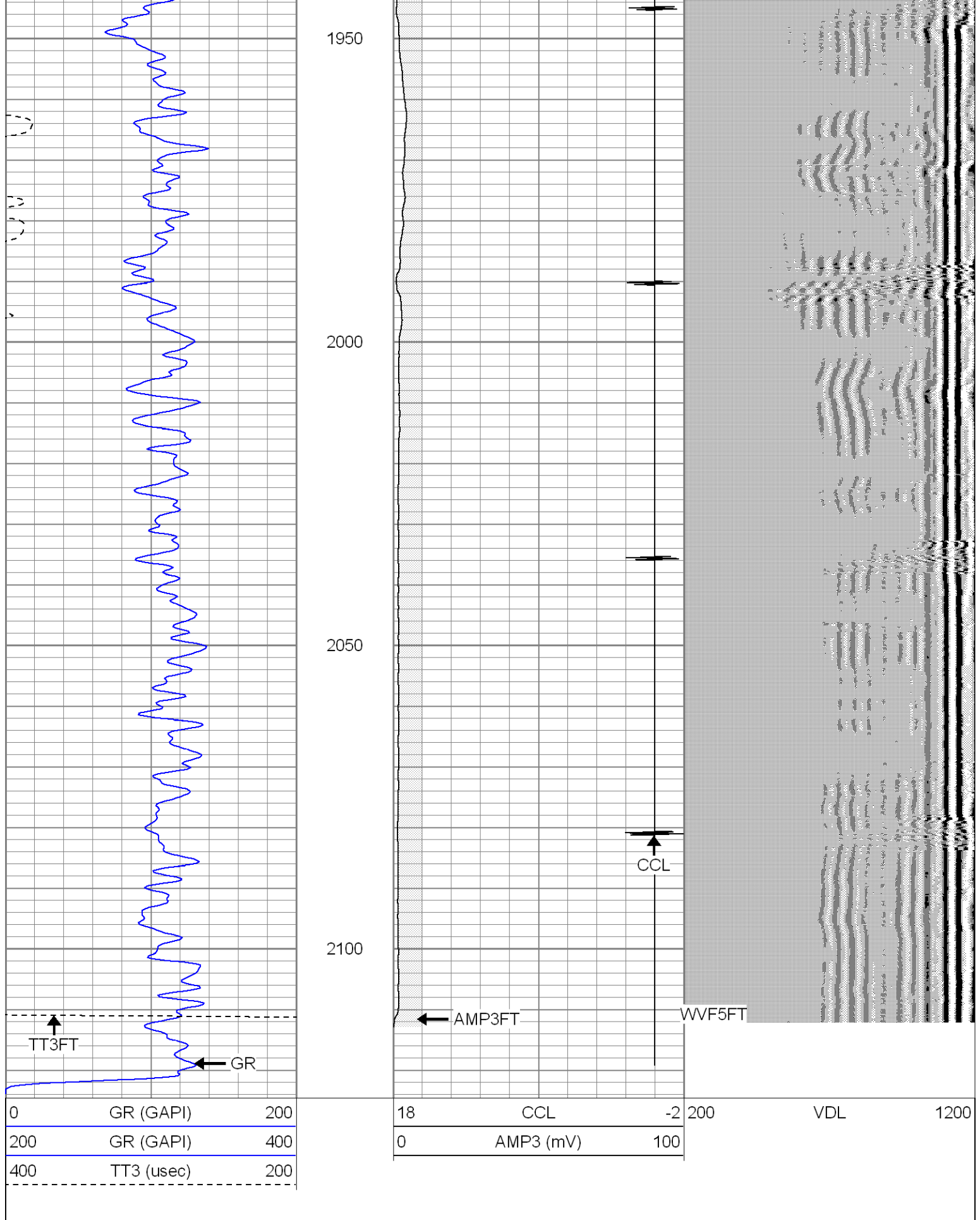
1750

1800

1850

1900



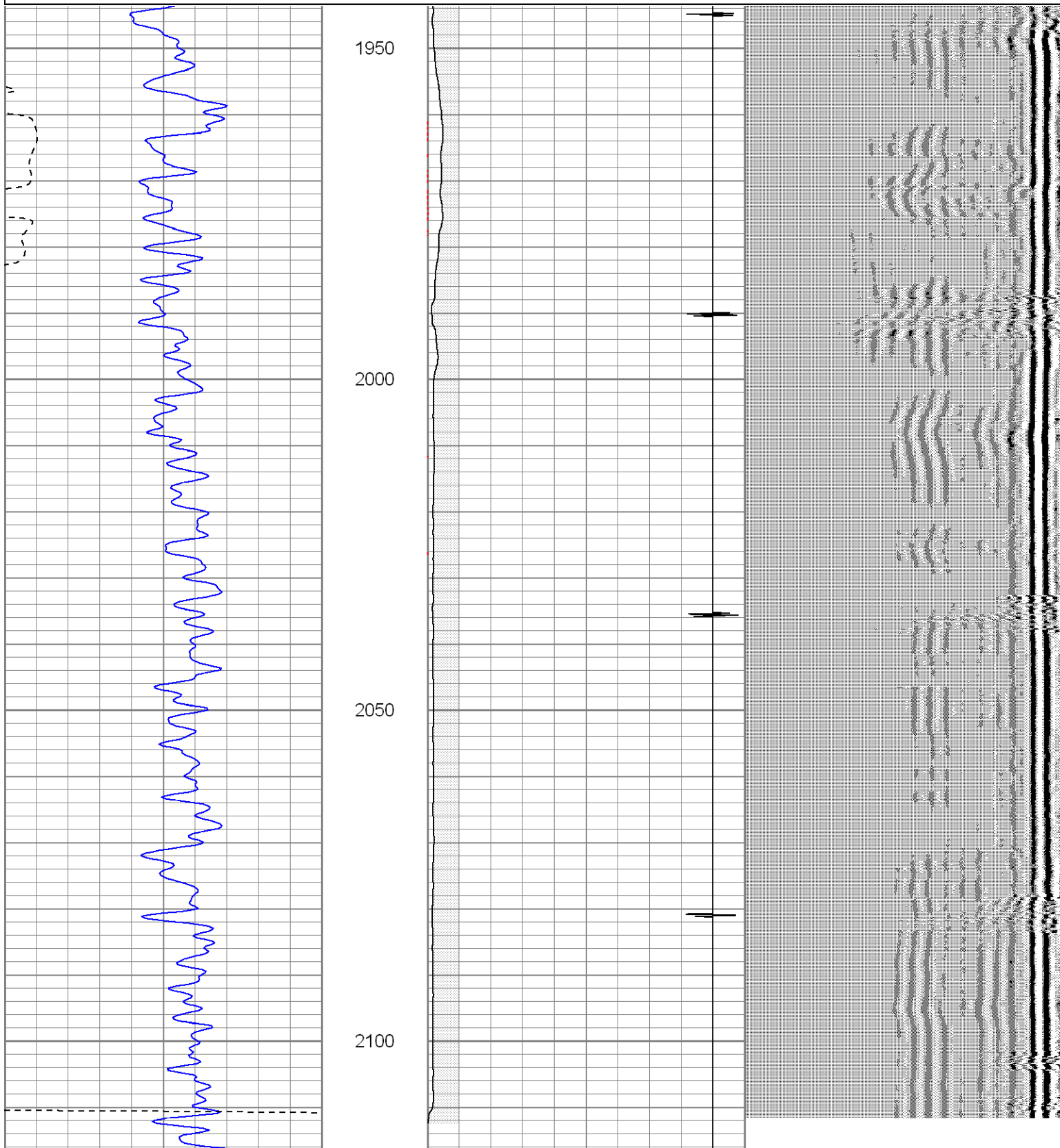


Repeat Section 0 PSI

WIRELINE

Database File: hillranch1-14b.db
Dataset Pathname: pass1.2
Presentation Format: cblsec
Dataset Creation: Mon Feb 01 13:58:17 2010 by Calc Open-Cased 071220
Charted by: Depth in Feet scaled 1:240

| | | | | | | | | |
|-------|------------|-----|-------|-------------|-----|-----|-----|------|
| 0 | GR (GAPI) | 200 | 18 | CCL | -2 | 200 | VDL | 1200 |
| 200 | GR (GAPI) | 400 | 0 | AMP3 (mV) | 100 | | | |
| 400 | TT3 (usec) | 200 | 0 | AMP5FT (mV) | 100 | | | |
| ----- | | | ----- | | | | | |



| | | | | | | | | |
|-----|------------|-----|----|-------------|-----|-----|-----|------|
| 0 | GR (GAPI) | 200 | 18 | CCL | -2 | 200 | VDL | 1200 |
| 200 | GR (GAPI) | 400 | 0 | AMP3 (mV) | 100 | | | |
| 400 | TT3 (usec) | 200 | 0 | AMP5FT (mV) | 100 | | | |
| | | | | | | | | |

| Calibration Report | |
|--------------------|---|
| Database File: | hillranch1-14b.db |
| Dataset Pathname: | pass2 |
| Dataset Creation: | Mon Feb 01 12:54:37 2010 by Log Open-Cased 071220 |

| Gamma Ray Calibration Report |
|------------------------------|
|------------------------------|

| | | |
|---------------------|--------------------------|----------|
| Serial Number: | 081014 | |
| Tool Model: | 275D_INC | |
| Performed: | Mon Feb 01 10:29:58 2010 | |
| Calibrator Value: | 200.0 | GAPI |
| Background Reading: | 50.0 | cps |
| Calibrator Reading: | 250.0 | cps |
| Sensitivity: | 1.0000 | GAPI/cps |

| Inclinometer Calibration Report |
|---------------------------------|
|---------------------------------|

| | | | | | |
|-----------------|--------------------------|------------|----------|-----------|-----|
| Performed: | Mon Feb 01 10:30:00 2010 | | | | |
| | Low Read. | High Read. | Low Ref. | High Ref. | |
| X Accelerometer | -3589.40 | 3580.00 | -1.00 | 1.00 | gee |
| Y Accelerometer | -3673.00 | 3520.20 | -1.00 | 1.00 | gee |
| Z Accelerometer | | | | | |

| Segmented Cement Bond Log Calibration Report |
|--|
|--|

| | | |
|------------------------------|-------------|----|
| Serial Number: | 080321 | |
| Tool Model: | ProbeRadial | |
| Calibration Casing Diameter: | 5.500 | in |
| Calibration Depth: | 987.339 | ft |

| |
|---|
| Master Calibration, performed Mon Feb 01 10:28:13 2010: |
|---|

| | Raw (v) | | Calibrated (mv) | | Results | |
|-----|---------|-------|-----------------|--------|---------|--------|
| | Zero | Cal | Zero | Cal | Gain | Offset |
| 3' | 0.014 | 1.312 | -1.000 | 85.000 | 66.281 | -1.936 |
| CAL | 0.013 | 0.505 | | | | |
| 5' | 0.013 | 0.973 | -1.000 | 85.000 | 89.594 | -2.203 |
| SUM | | | | | | |
| S1 | 0.014 | 1.237 | 0.000 | 85.000 | 69.520 | -0.975 |
| S2 | 0.014 | 1.200 | 0.000 | 85.000 | 71.703 | -1.014 |
| S3 | 0.014 | 1.296 | 0.000 | 85.000 | 66.287 | -0.939 |
| S4 | 0.014 | 1.418 | 0.000 | 85.000 | 60.512 | -0.823 |
| S5 | 0.014 | 1.586 | 0.000 | 85.000 | 54.064 | -0.752 |
| S6 | 0.014 | 1.611 | 0.000 | 85.000 | 53.215 | -0.752 |
| S7 | 0.015 | 1.550 | 0.000 | 85.000 | 55.004 | -0.805 |

| | | | | | | |
|----|-------|-------|-------|--------|--------|--------|
| S7 | 0.015 | 1.559 | 0.000 | 85.000 | 55.034 | -0.805 |
| S8 | 0.014 | 1.367 | 0.000 | 85.000 | 62.846 | -0.892 |

| Sensor | Offset (ft) | Schematic | Description | Len (ft) | OD (in) | Wt (lb) |
|---|-------------|-----------|--|----------|---------|---------|
| WVFS8 | 13.40 | | SCBL-ProbeRadial (080321) Probe 2 3/4 RadII | 8.75 | 2.75 | 106.50 |
| WVF5FT | 12.40 | | | | | |
| WVFCAL | 9.15 | | | | | |
| CCL | 5.15 | | | | | |
| ACCX | 3.48 | | X | 3.00 | 1.69 | 25.00 |
| ACCY | 3.48 | | GR-275D_INC (081014) | 4.50 | 2.75 | 50.00 |
| ACCZ | 3.48 | | 2-3/4" GR-CCL with Inclination | | | |
| GR | 2.48 | | Prod | 1.65 | 1.69 | 1.00 |
| <div>Dataset: hillranch1-14b.db: field/well/run1/pass2.2</div> <div>Total Length: 17.90 ft</div> <div>Total Weight: 182.50 lb</div> <div>O.D. 2.75 in</div> | | | | | | |