



CEMENT BOND LOG

Company		MARATHON OIL COMPANY	
Well	697-28A-18		
Field	GRAND VALLEY		
County	GARFIELD	State	CO
Location:		API # : 045-16147-0000	Other Services
LAT:39.49141 LON: 108.22934		NONE	
1694'-FSL			
SEC: 28 TWP: 06S RGE: 97W			
Permanent Datum		GROUND LEVEL	Elevation
Log Measured From		KELLEY BUSHING = 24'	K.B: 8312.8'
Drilling Measured From		KELLEY BUSHING	D.F: 8311.8'
			G.L: 8288.8'
Date	09 DEC 2009		
Run Number	ONE		
Depth Driller	2260'		
Depth Logger	2260'		
Bottom Logged Interval	2260'		
Top Log Interval	SURFACE		
Open Hole Size	14-3/4		
Type Fluid	WATER		
Density / Viscosity	8.34#		
Max. Recorded Temp.	N/A		
Estimated Cement Top	SURFACE		
Time Well Ready	N/A		
Time Logger on Bottom	2215		
Equipment Number	ST0501W		
Location	GRAND JUNCTION		
Recorded By	M. MAVROS		
Witnessed By	D. SOUTHWORTH		
Borehole Record		Tubing Record	
Run Number	Bit	From	To
N/A		N/A	
Casing Record	Size	Wgt/Ft	Top
Surface String	9-5/8"	36#	SURFACE
Prot. String	N/A		
Production String	N/A		
Liner	N/A		

<<< Fold Here >>>

All interpretations are opinions based on inferences from electrical or other measurements and we cannot and do not guarantee the accuracy or correctness of any interpretation, and we shall not, except in the case of gross or willful negligence on our part, be liable or responsible for any loss, costs, damages, or expenses incurred or sustained by anyone resulting from any interpretation made by any of our officers, agents or employees. These interpretations are also subject to our general terms and conditions set out in our current Price Schedule.

Comments

CEMENT BOND WAS FOUND AT THE FOLLOWING DEPTHS:
SURFACE- 940'
1476' - 1700'
2105' -2225'

WE APPRECIATE YOUR BUSINESS, MESA WIRELINE LLC, GRAND JUNCTION CO. (970) 257-0458



MAIN PASS 5" = 100'

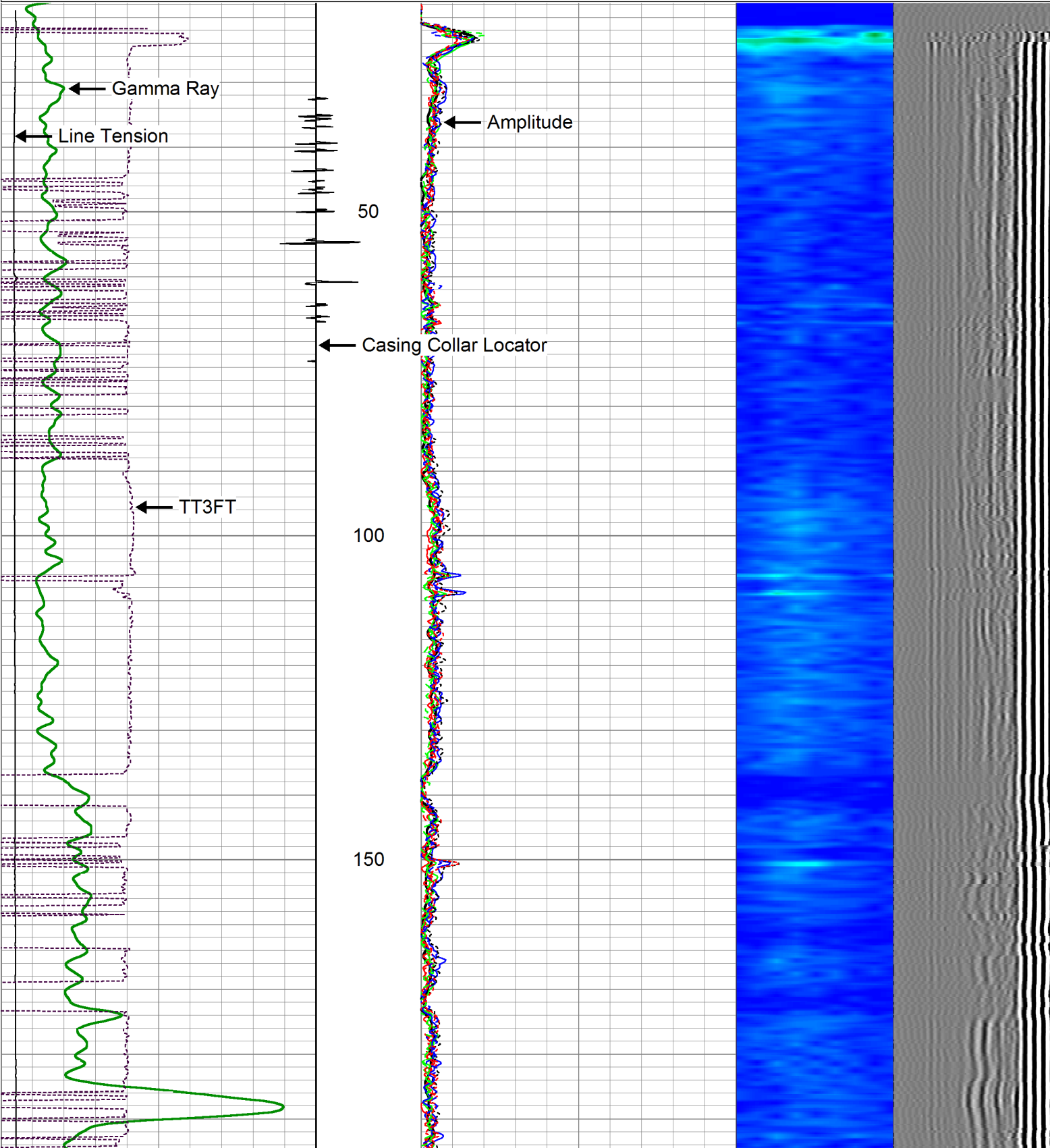
Database File: marathoncbl.db
Dataset Pathname: pass4
Presentation Format: rbt_fin
Dataset Creation: Wed Dec 09 22:15:39 2009 by Log Std Casedhole 08121
Charted by: Depth in Feet scaled 1:240

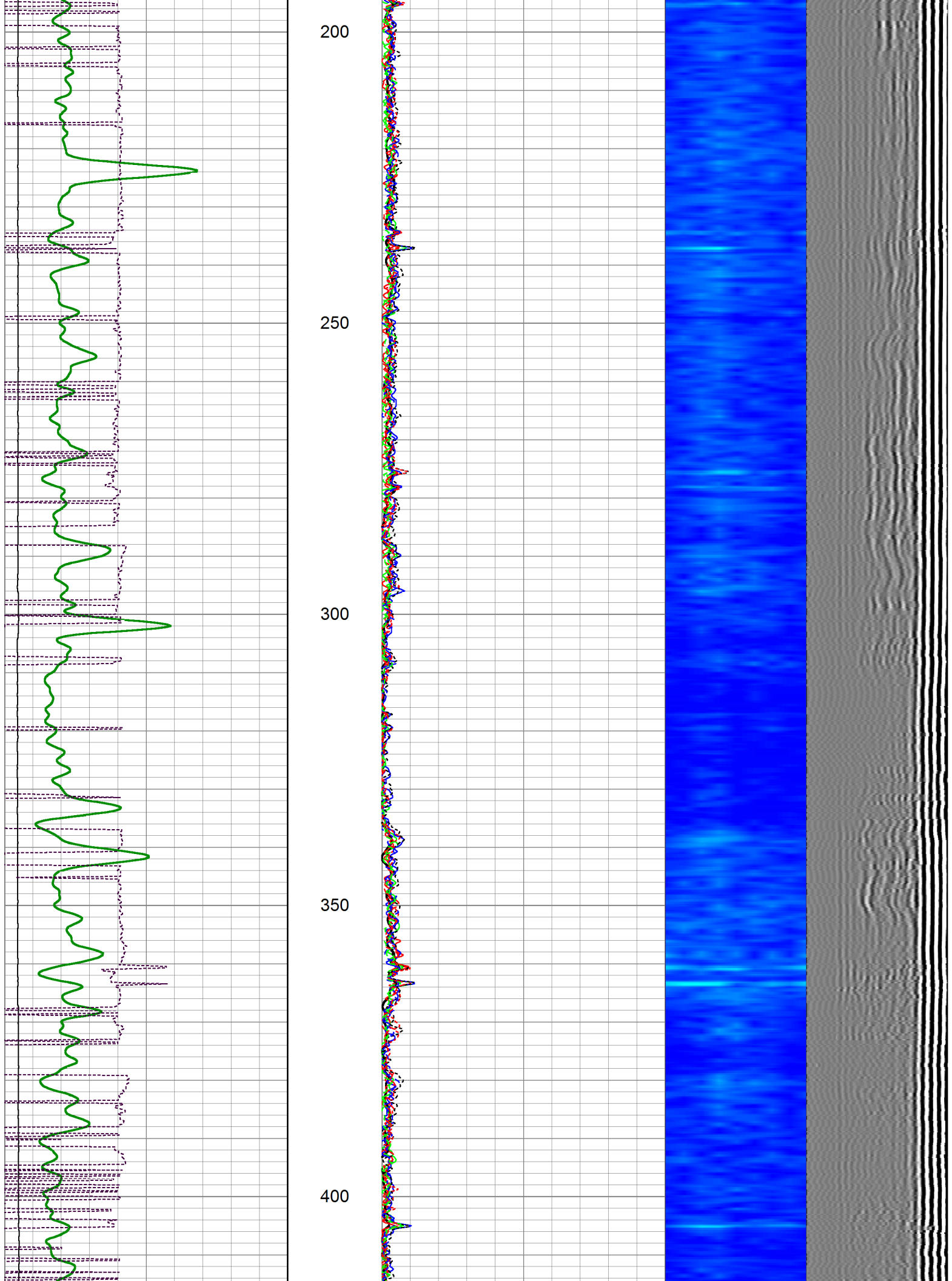
0	LTEN (lb)	4000
0	GR (GAPI)	200
400	TT3FT (usec)	180

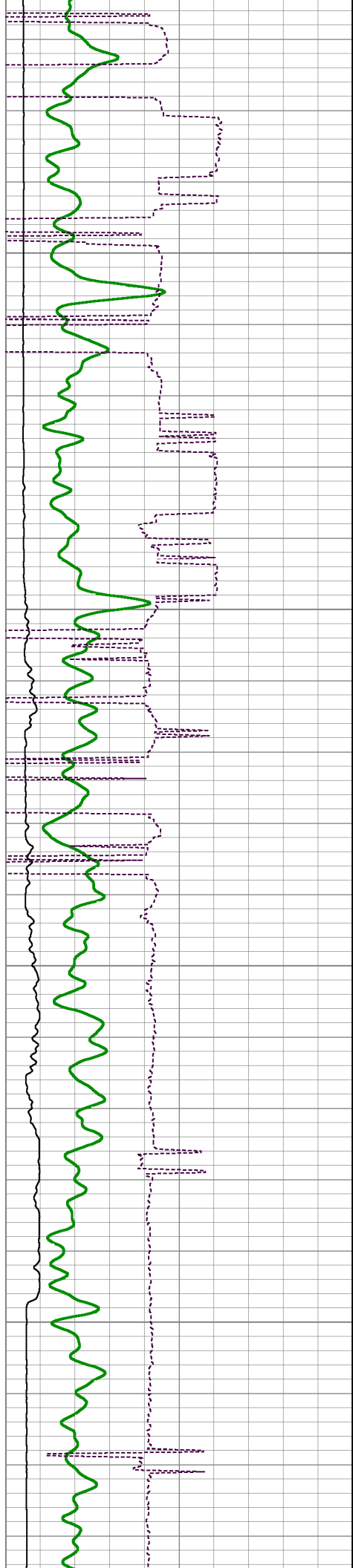
0	Amplitude (mV)	100
0	TT3FT (usec)	210

1	SECTORS	8	Variable Density
0		70	200 1200

	CCL	
--	-----	--





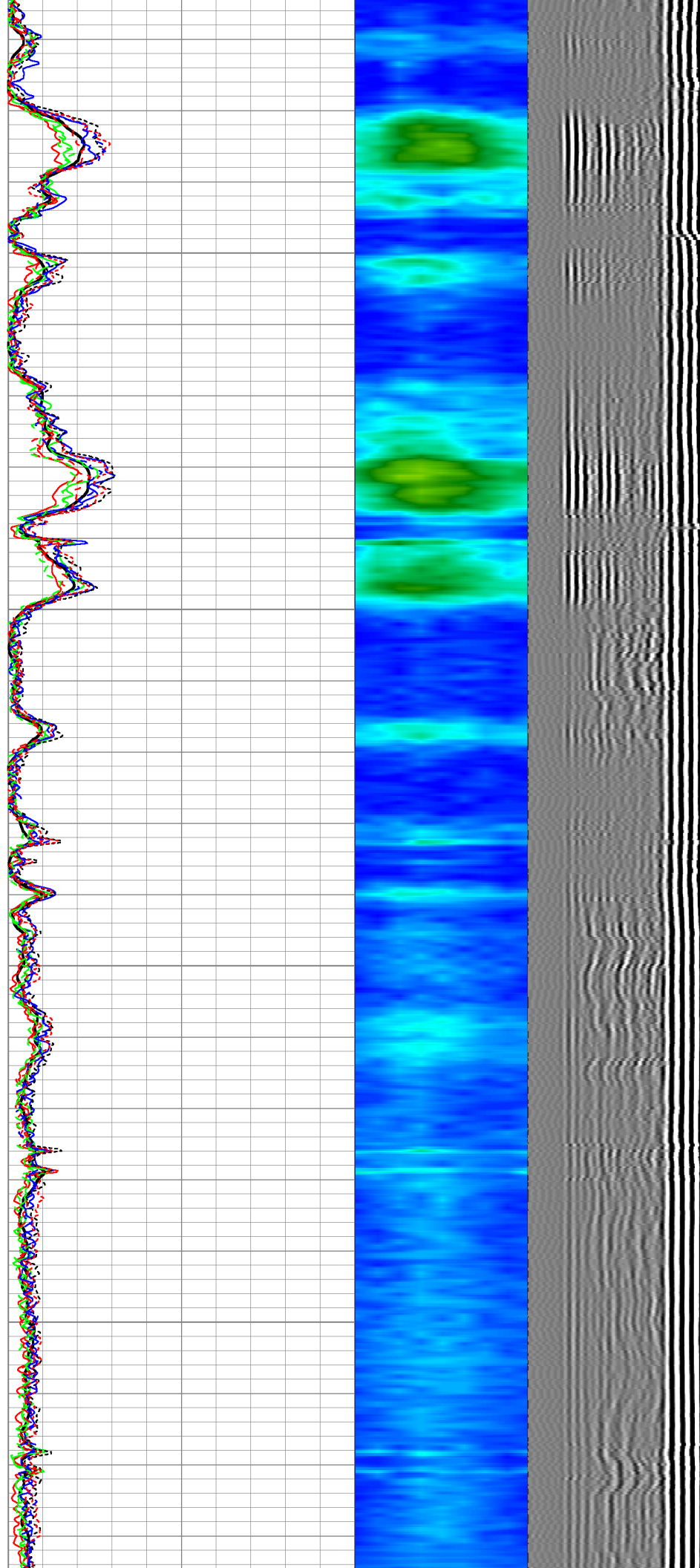


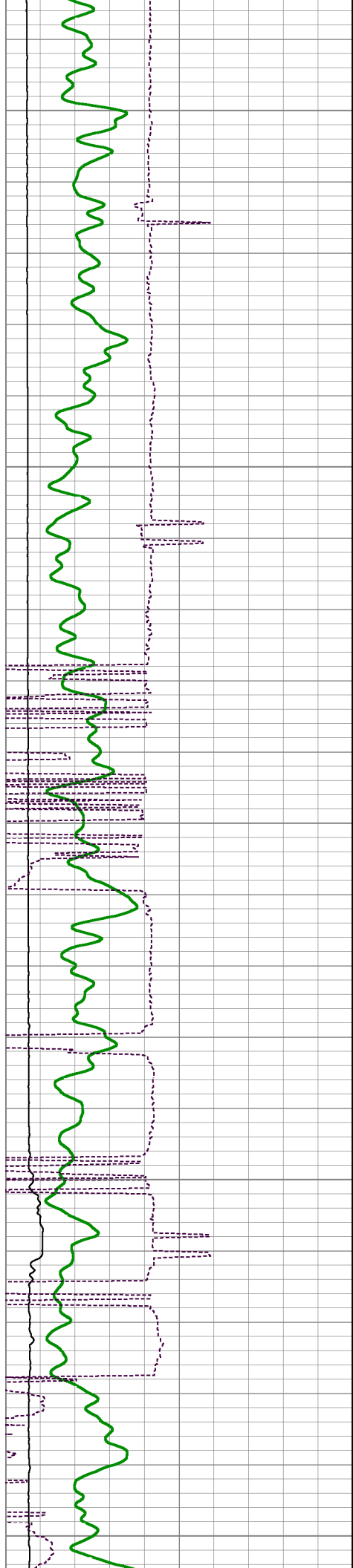
450

500

550

600





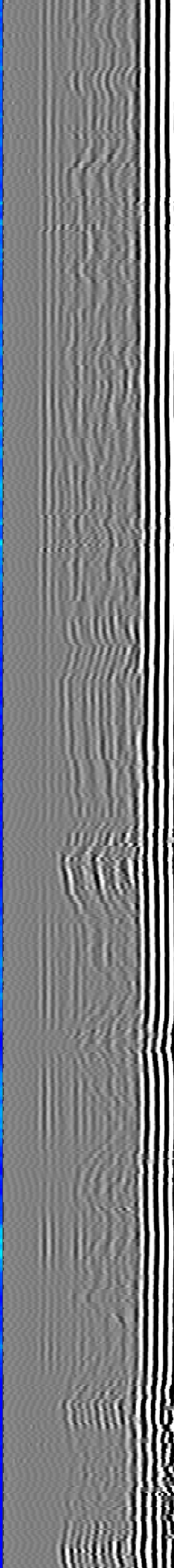
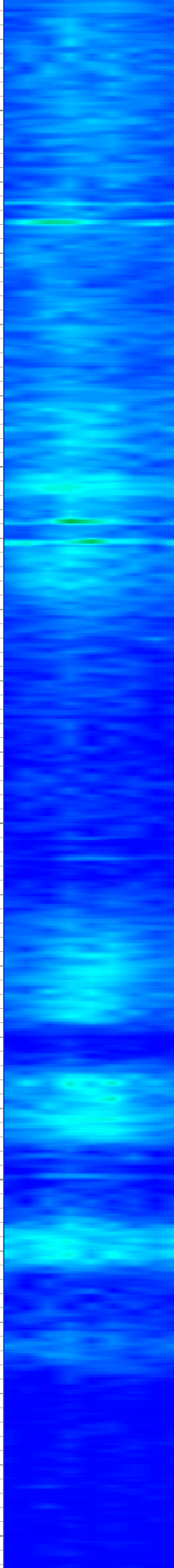
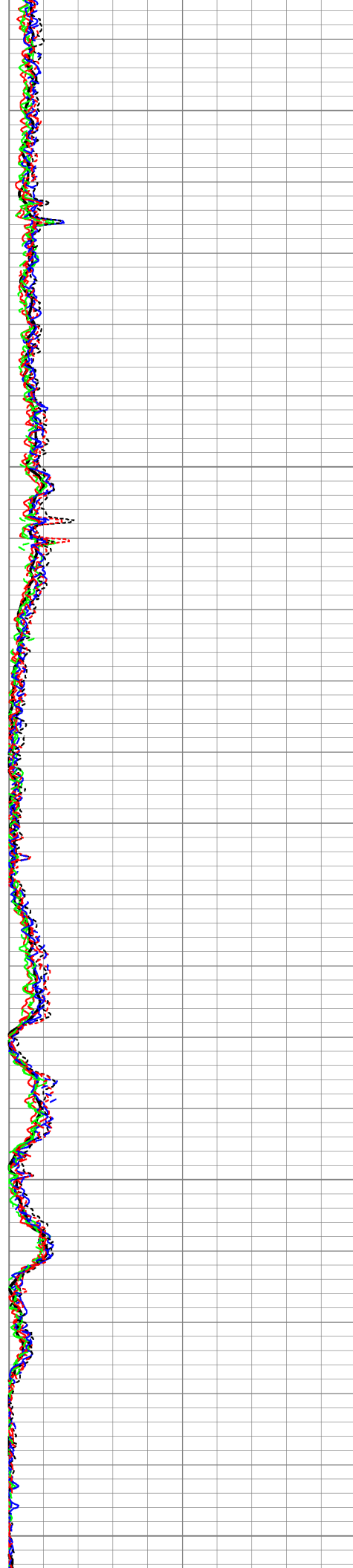
650

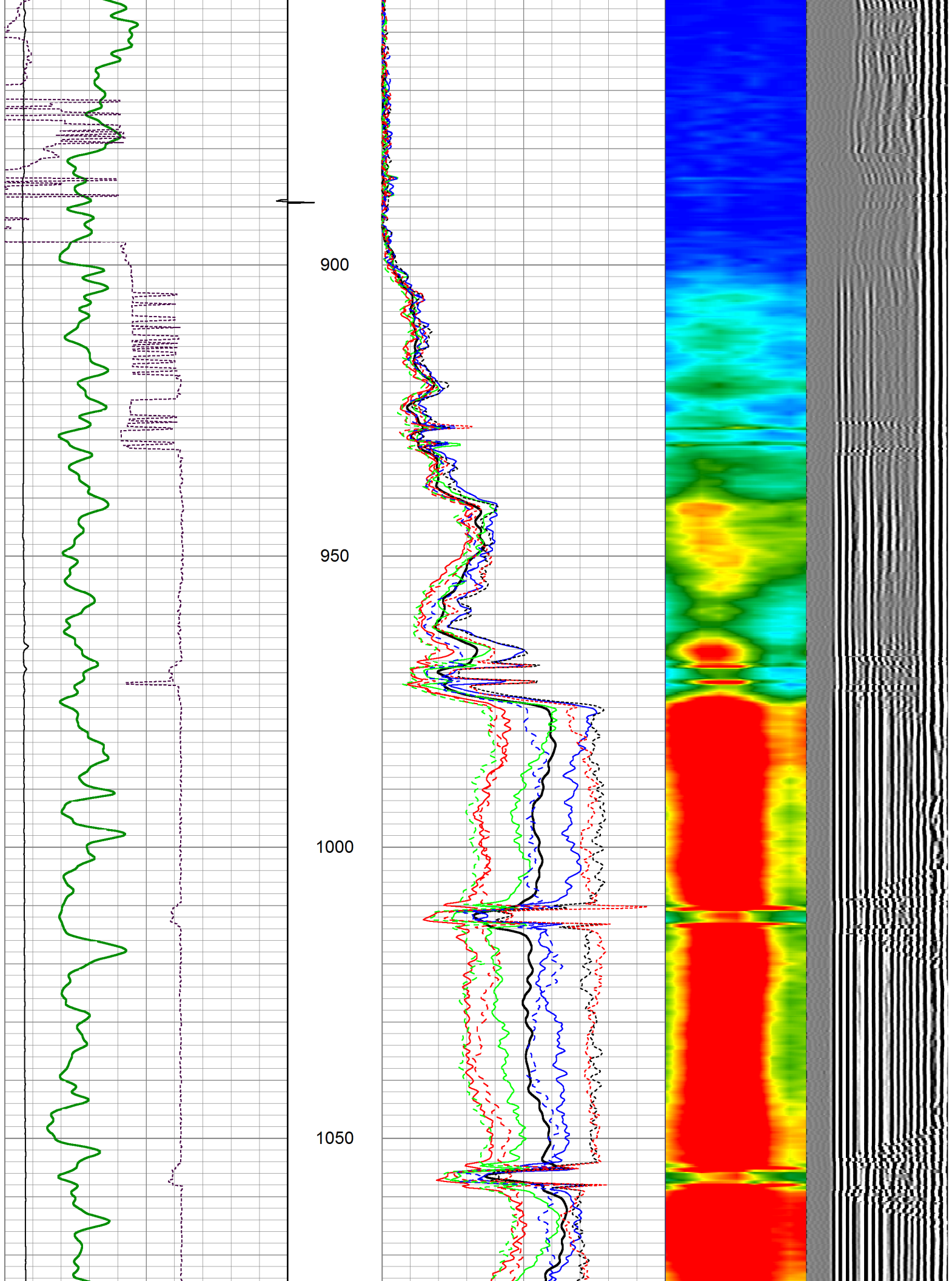
700

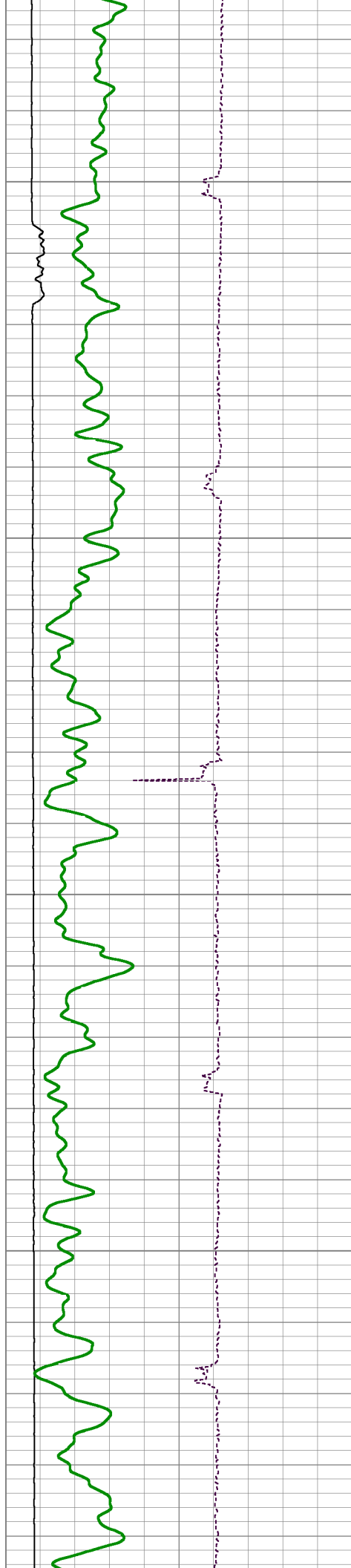
750

800

850





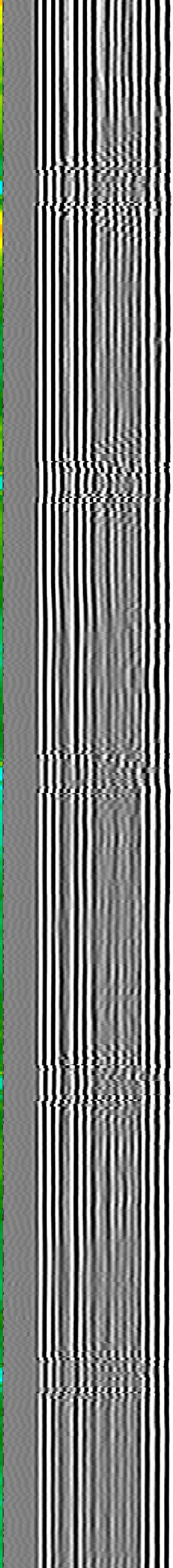
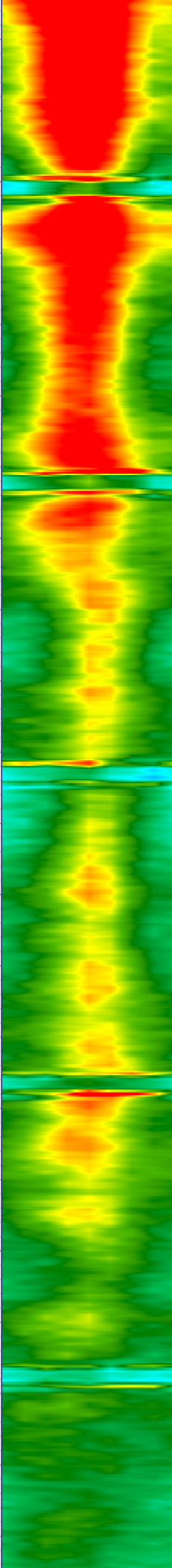
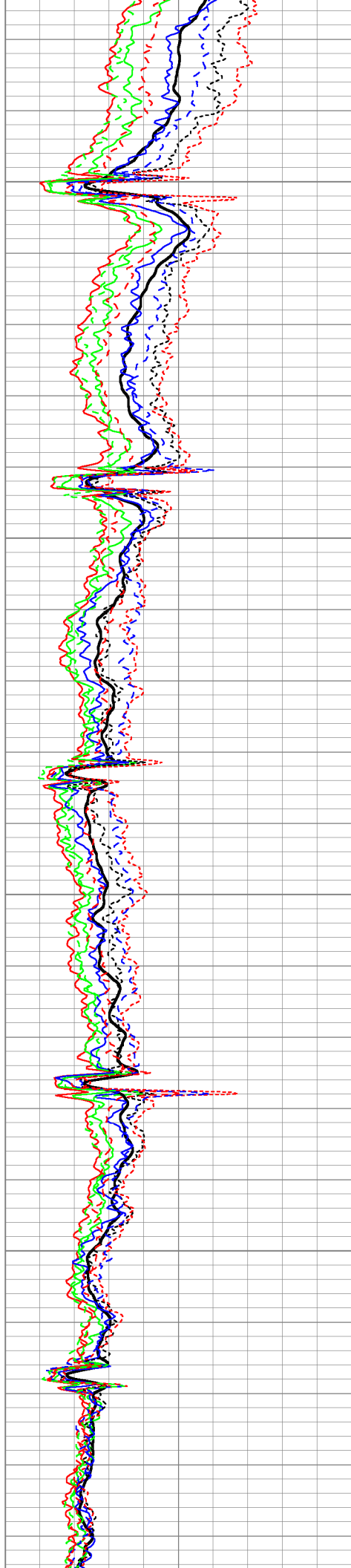


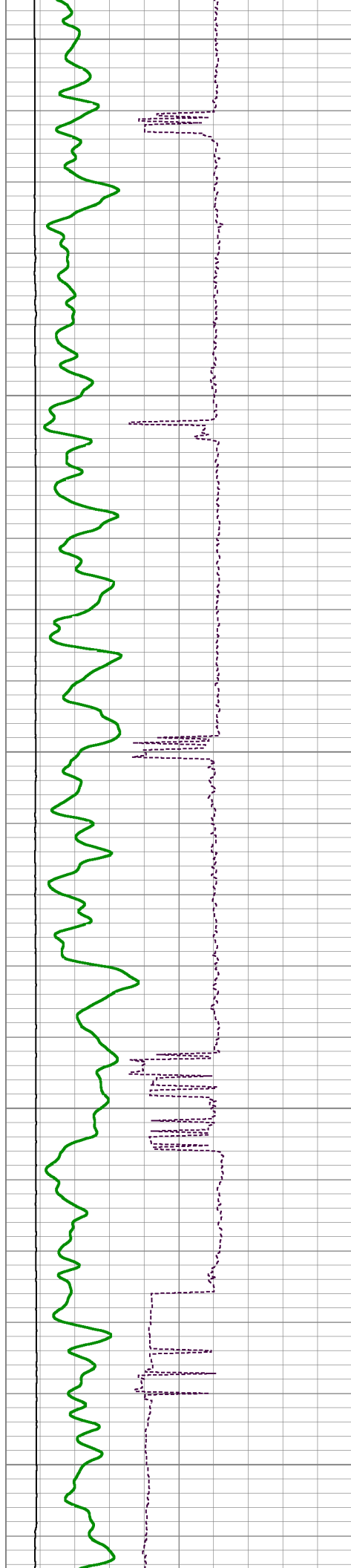
1100

1150

1200

1250





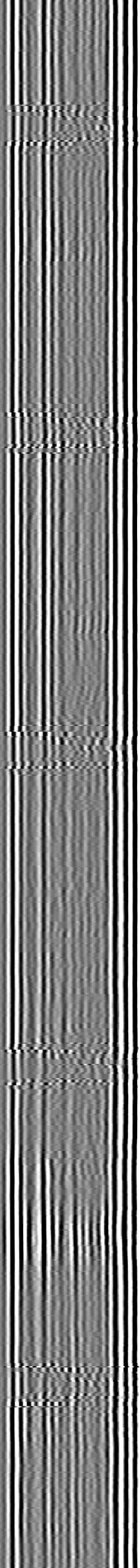
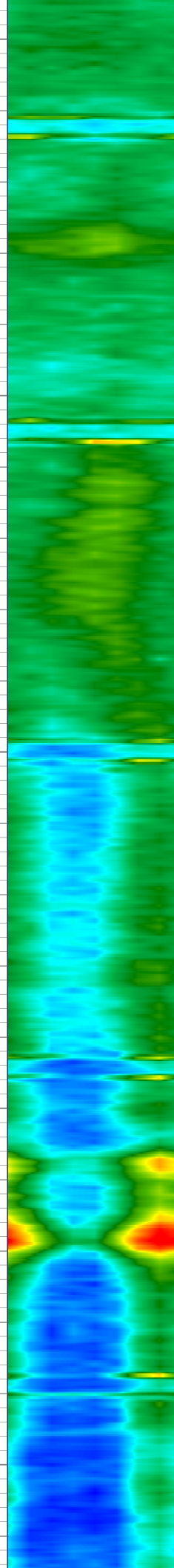
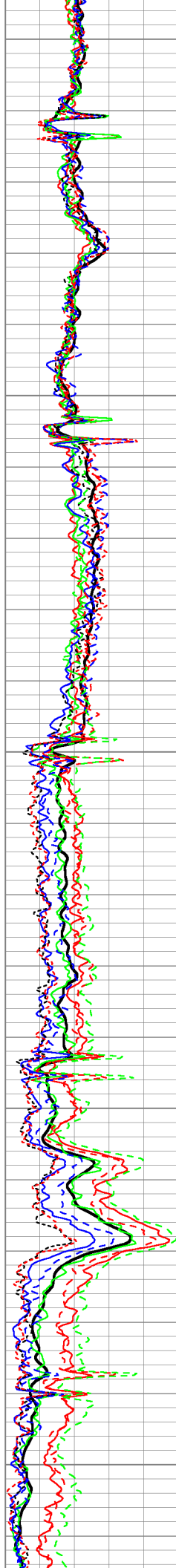
1300

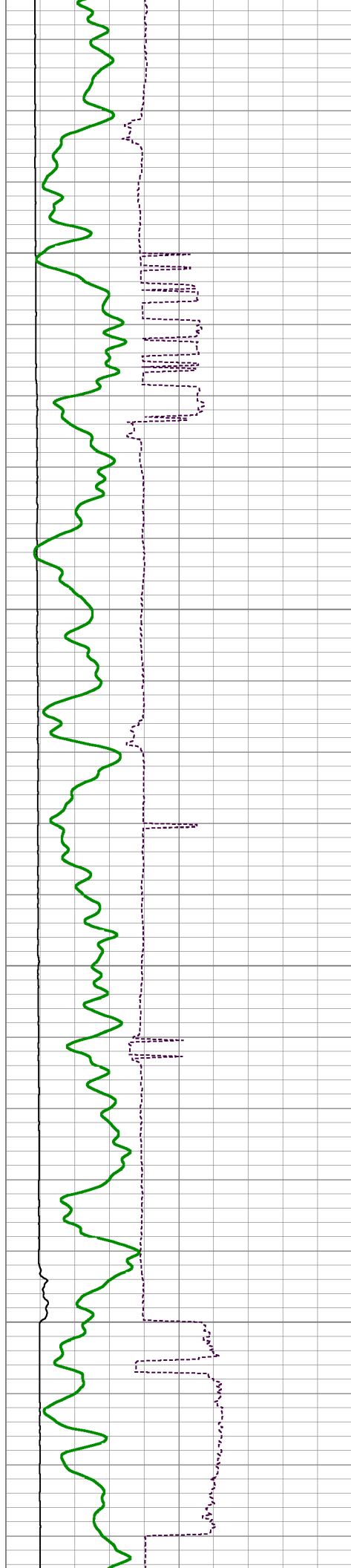
1350

1400

1450

1500



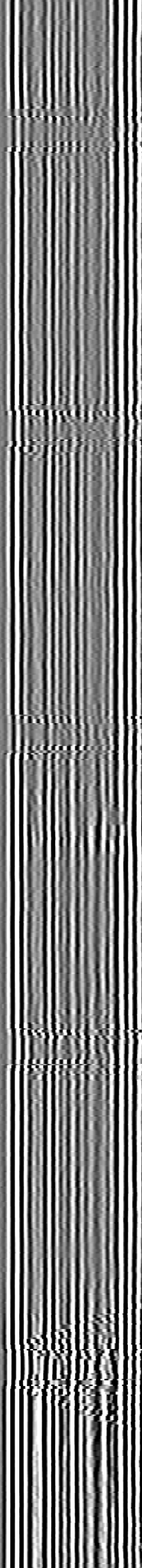
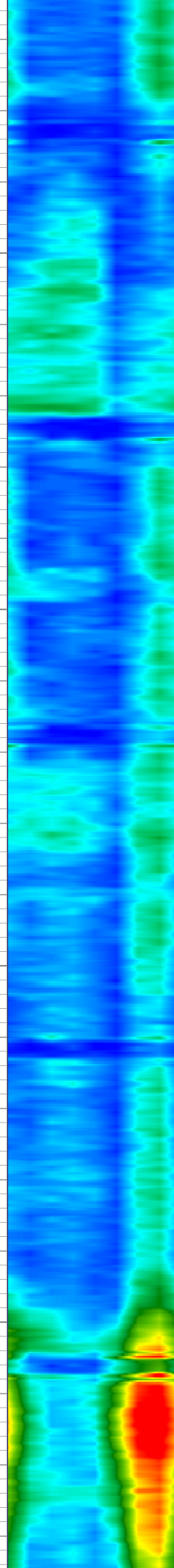
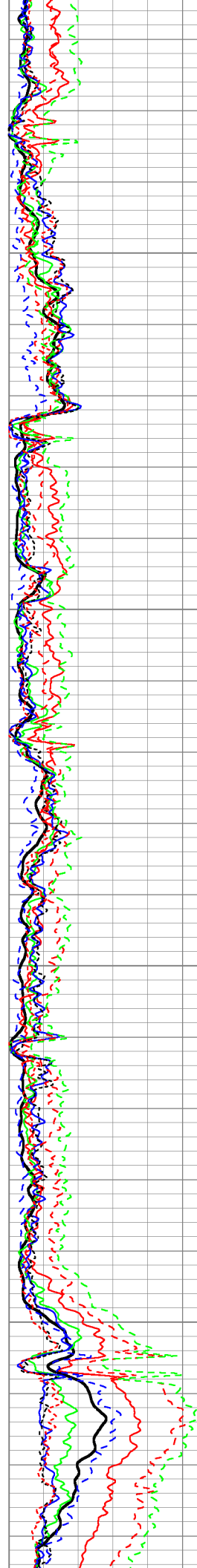


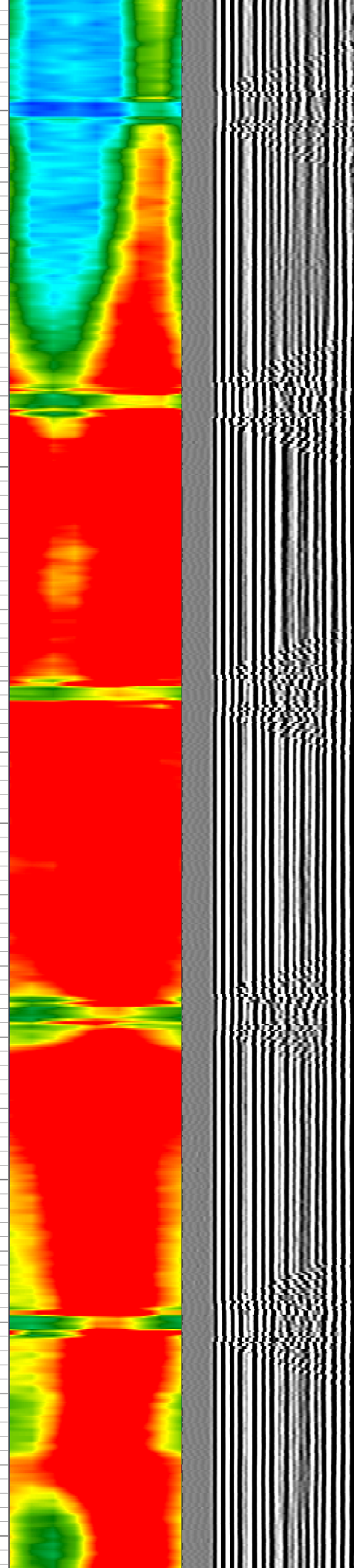
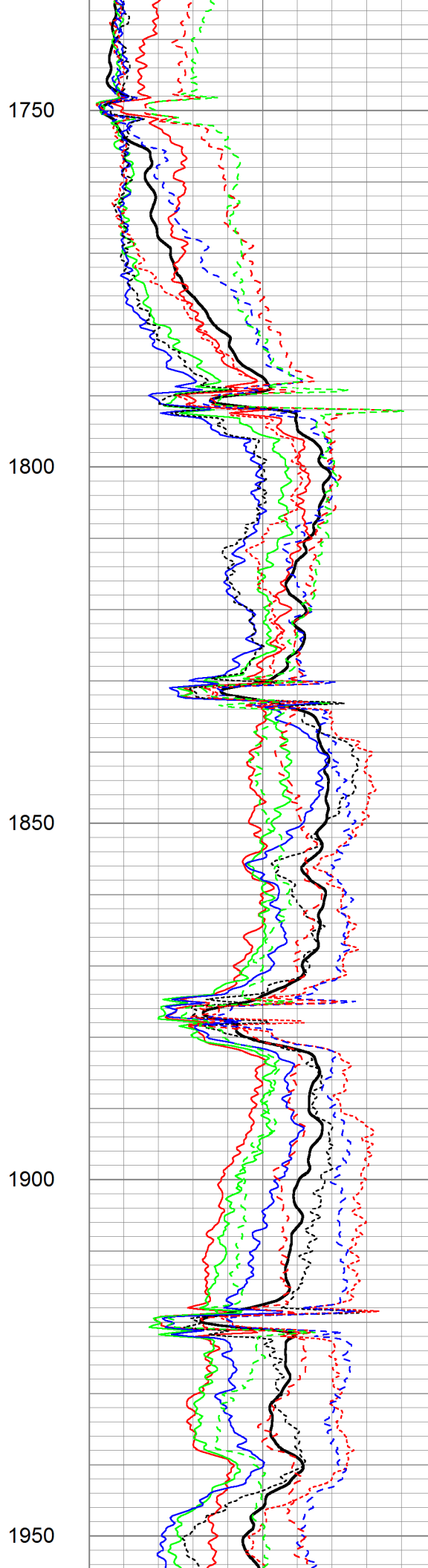
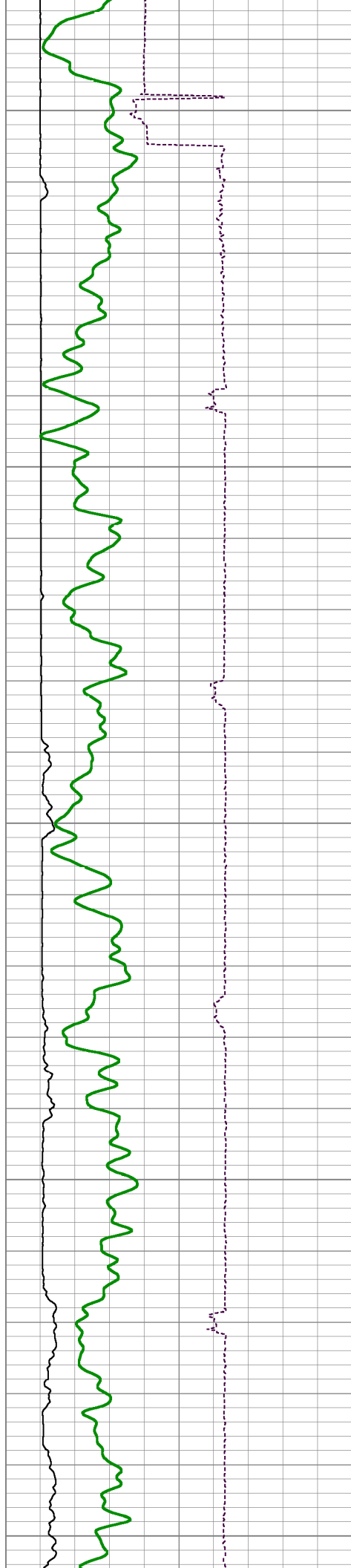
1550

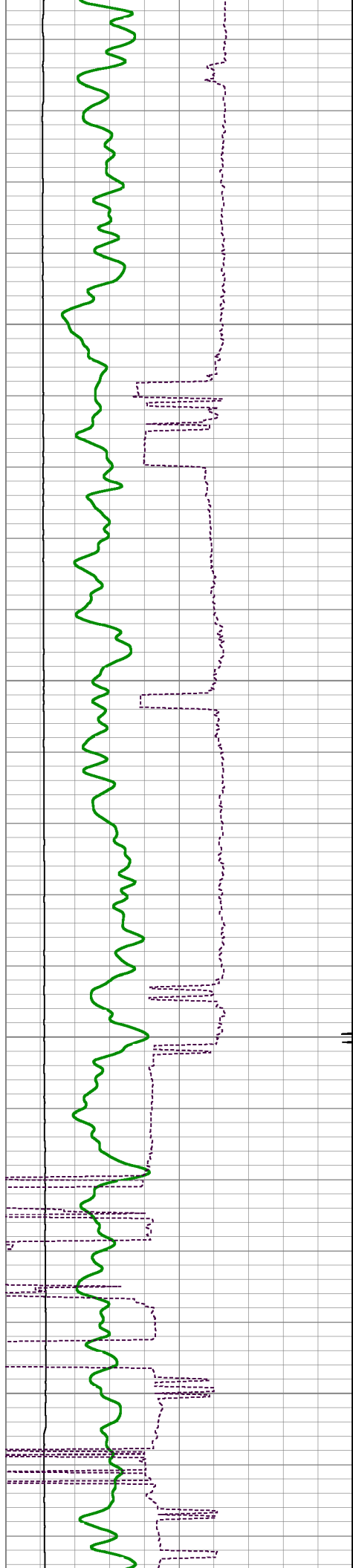
1600

1650

1700





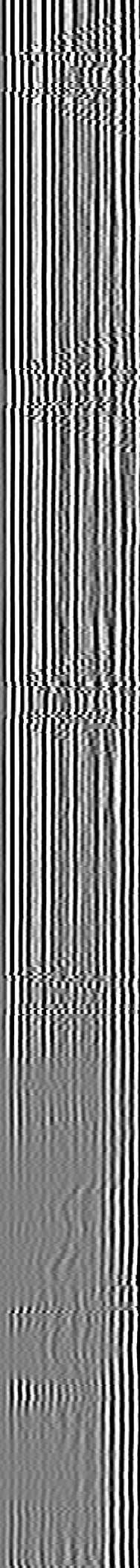
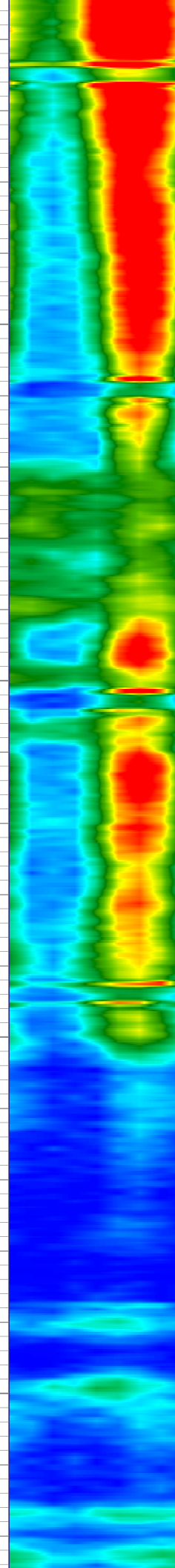
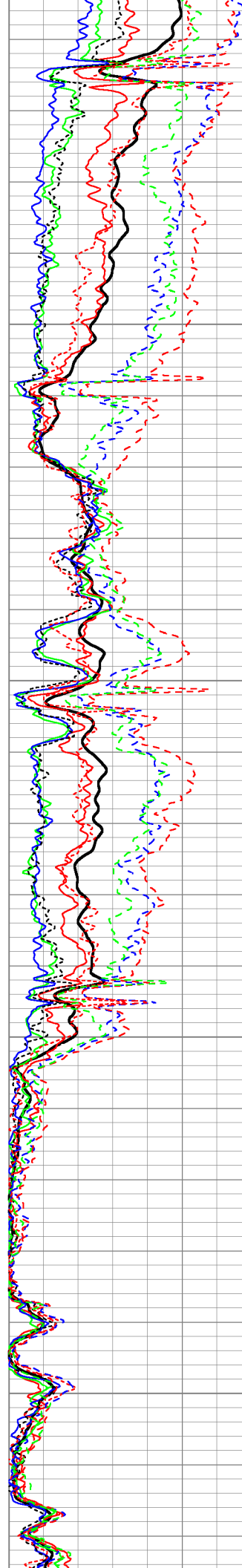


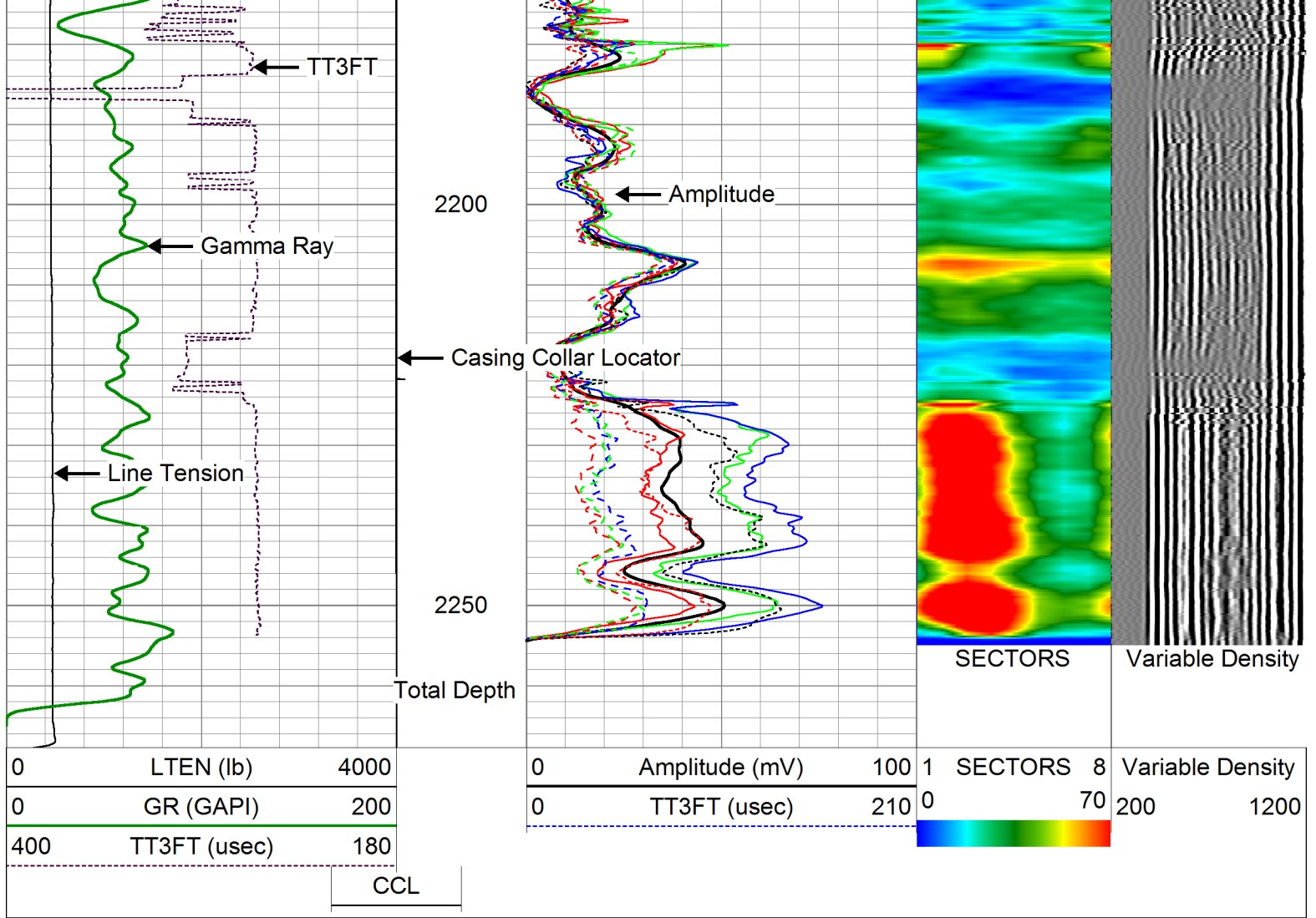
2000

2050

2100

2150





Company	MARATHON OIL COMPANY
Well	697-28A
Field	GRAND VALLEY
County	GARFIELD
State	CO