

Schlumberger

PERFORM-APWD

2 in/hr Time Based

Real Time Log

Company: ExxonMobil Oil Corporation

Well: Piceance Creek Unit 297 11B1

Field: Piceance Creek

County: Rio Blanco

State: Colorado

Country: USA

APIN: 051031137800

Rig Name: H&P 215

Rig Type: Flex 3 Land Rig

Section: 11
Township: 2S
Range: 97W

FL: NAD 27 Colorado Northern Zone

FL1: Y: 212916.22 ft Latitude: N 39° 53' 6.90"

FL2: X: 1231361.37 ft Longitude: W 108° 14' 21.80"

Log Measured From - Drill Floor: 7158.0 ft
Ground Level: 7131.0 ft



Permanent Datum - Mean Sea Level

Acquisition Dates: 21 Sep 09 to 23 Sep 09

Print Interval: 9/21/2009 3:31:37 AM to 9/23/2009 2:59:02 AM

Index Types: Time

Index Scales: 2" / 3600 secs

Depth Source: Driller's Depth

Depth Sensor: 3rd Party Depth

Conveyance: Drill Pipe

Print Type: Final

Spud Date: 4/10/2009

Other Services:

Directional Drilling



Disclaimer

THE USE OF AND RELIANCE UPON THIS RECORDED-DATA BY THE HEREIN NAMED COMPANY (AND ANY OF ITS AFFILIATES, PARTNERS, REPRESENTATIVES, AGENTS, CONSULTANTS AND EMPLOYEES) IS SUBJECT TO THE TERMS AND CONDITIONS AGREED UPON BETWEEN SCHLUMBERGER AND THE COMPANY, INCLUDING: (a) RESTRICTIONS ON USE OF THE RECORDED-DATA; (b) DISCLAIMERS AND WAIVERS OF WARRANTIES AND REPRESENTATIONS REGARDING COMPANY'S USE AND RELIANCE UPON THE RECORDED-DATA; AND (c) CUSTOMER'S FULL AND SOLE RESPONSIBILITY FOR ANY INFERENCE DRAWN OR DECISION MADE IN CONNECTION WITH THE USE OF THIS RECORDED-DATA.

Contents

1. Header
2. Disclaimer
3. Contents
4. 1 PERFORM-APWD
 - 4.1 Software Version
 - 4.2 Pass Summary
 - 4.3 Log (APWD Log)
 - 4.4 Parameter Listing
5. Tail

PERFORM-APWD

Software Version

Acquisition System		Version	
MaxWell		1.2.8706.0	
Framework Patch		FWK-BGC-20090709-1.2.8706.1016	
Application Patch		APL-BGC-DnM-1.2.8706.1021	
Tool Elements	Description	Software Version	Firmware Version
APWD	M10 APWD	1.2.8706.1021	
DRILLING_SURFACE	DRILLING_SURFACE	1.2.8706.1016	

Pass Summary

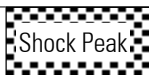
Run Name	Pass Objective	Direction	Start	Stop	Acquisition Start Date	Acquisition Start Time
1	TimeLogicalAcq	Down	21-Sep-2009 03:31:32		21-Sep-2009	03:31:32

Log

Run 1: TimeLogicalAcq 2EE9FA68-468C-4B40-8ED8-6101886209AE

Description: PowerPulse/APWD Drilling Mechanics Time Format: Log (APWD Log) Index Scale: 2 in per 3600 s Index Type: Time Creation Date: 23-Sep-2009 03:57:27

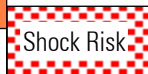
AJAM	M10675:M10675	ACQ - RT
BLKP	DRILLING_SURFACE	ACQ - RT
CRPM	M10675:M10675	ACQ - RT
DEPTH	DnMWorkflow	ACQ - RT
DHAP	M10675:M10675	ACQ - RT
DHAT	M10675:M10675	ACQ - RT
ECD	M10675:M10675:APWD	ACQ - RT
GENERIC_01	DRILLING_SURFACE	ACQ - RT
HKLA	DRILLING_SURFACE	ACQ - RT
OBTM	DnMWorkflow	ACQ - RT
ROP	DRILLING_SURFACE	ACQ - RT
SHKPK	M10675:M10675	ACQ - RT
SPPA	DRILLING_SURFACE	ACQ - RT
STICK	M10675:M10675	ACQ - RT
STOR	DRILLING_SURFACE	ACQ - RT
SWOB	DRILLING_SURFACE	ACQ - RT
TFLO	DRILLING_SURFACE	ACQ - RT
TRPM	M10675:M10675	ACQ - RT
VIB_LAT	M10675:M10675	ACQ - RT
VIB_X	M10675:M10675	ACQ - RT



Shock Peak
(SHKPK)

High Stick

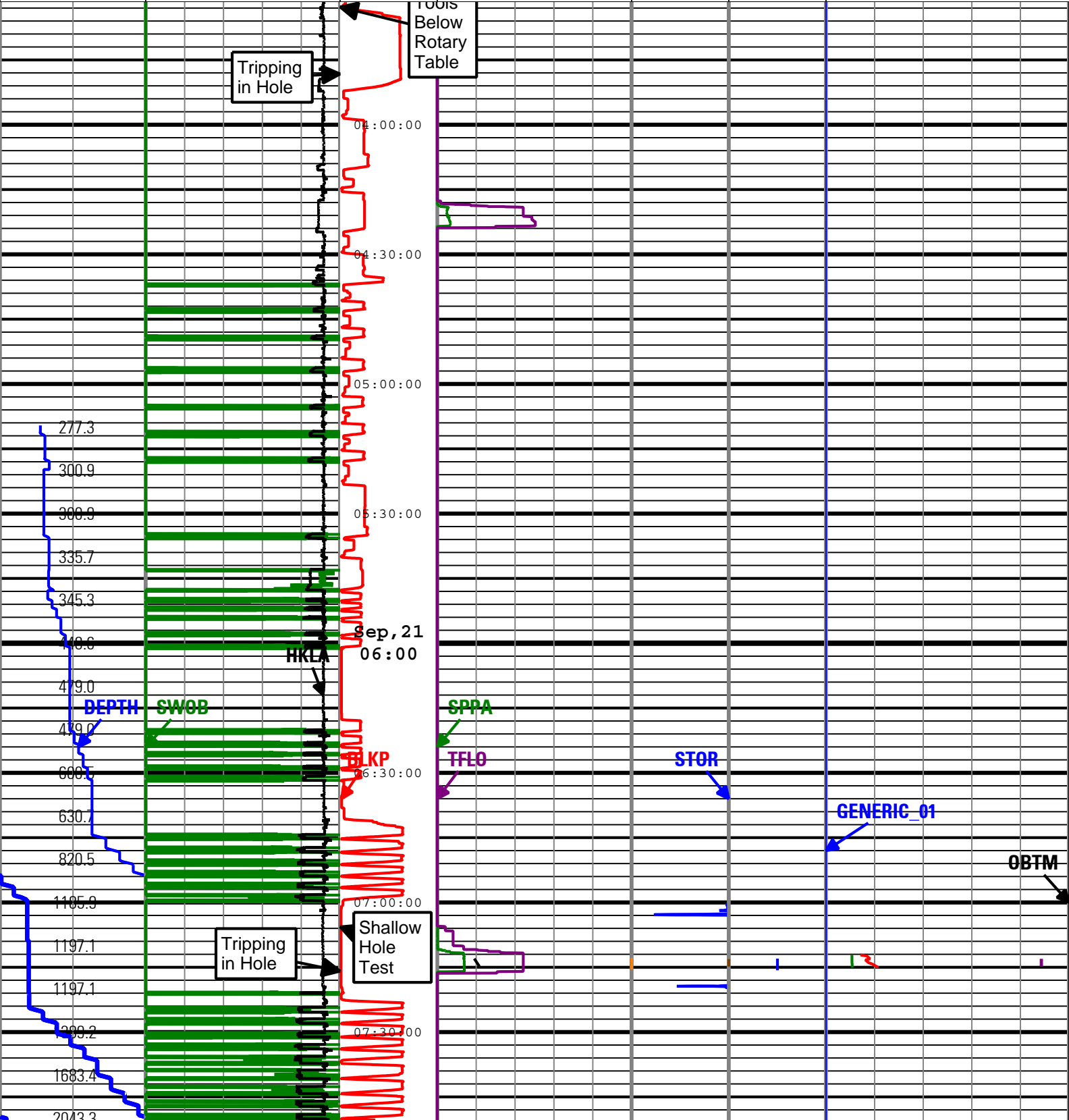
Collar
Rotational
Speed

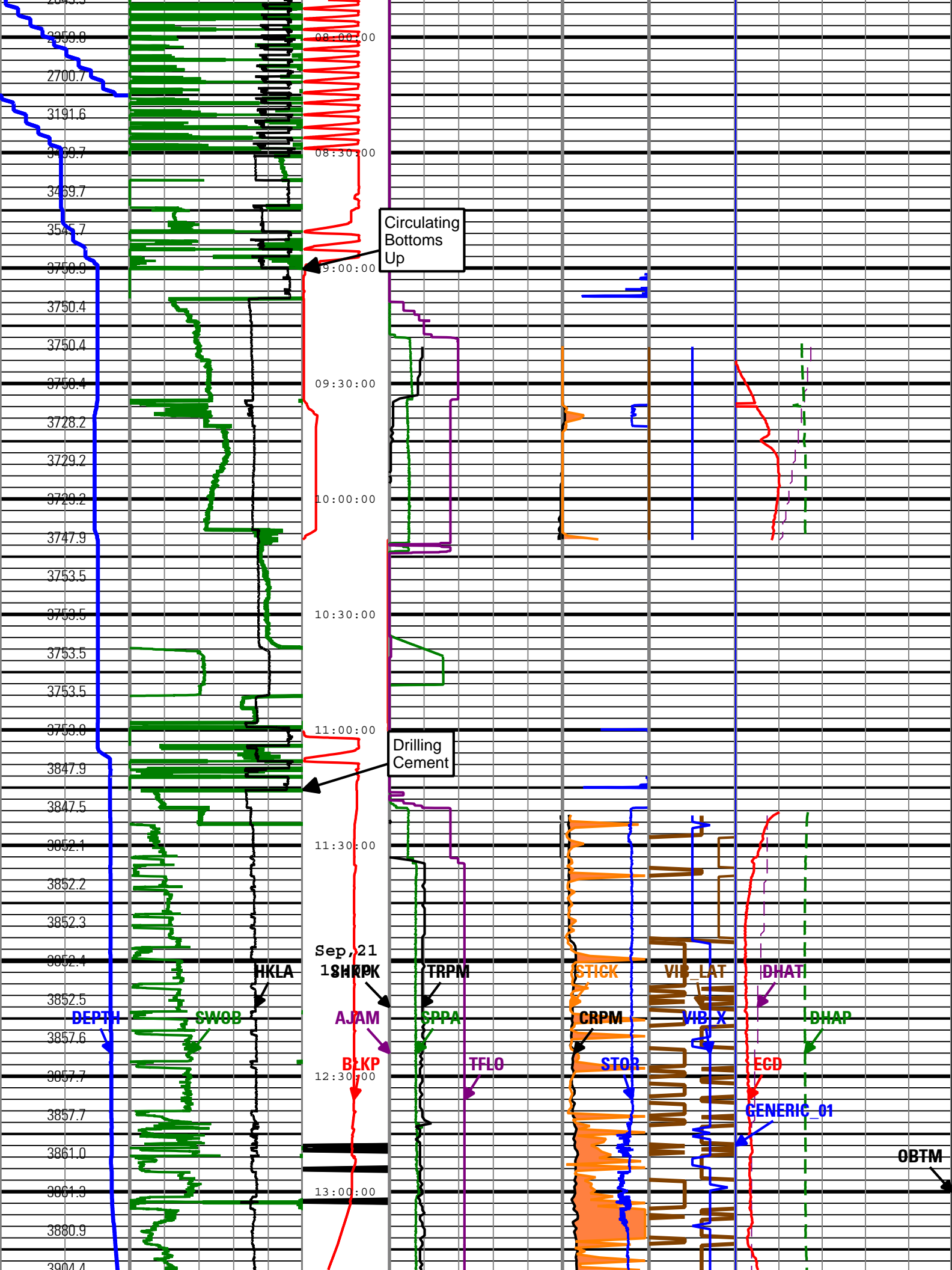


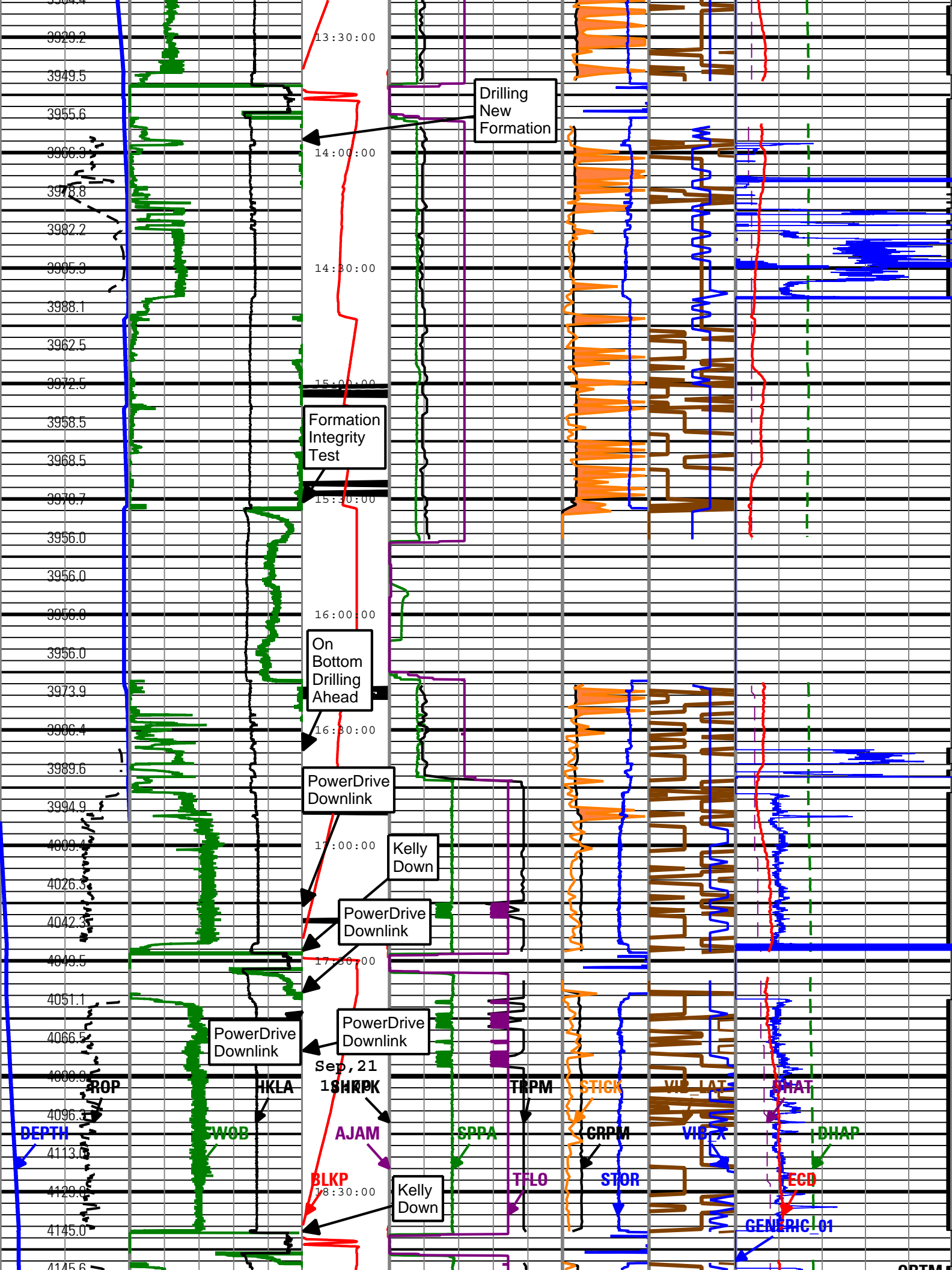
Shock Risk
Transverse
RMS

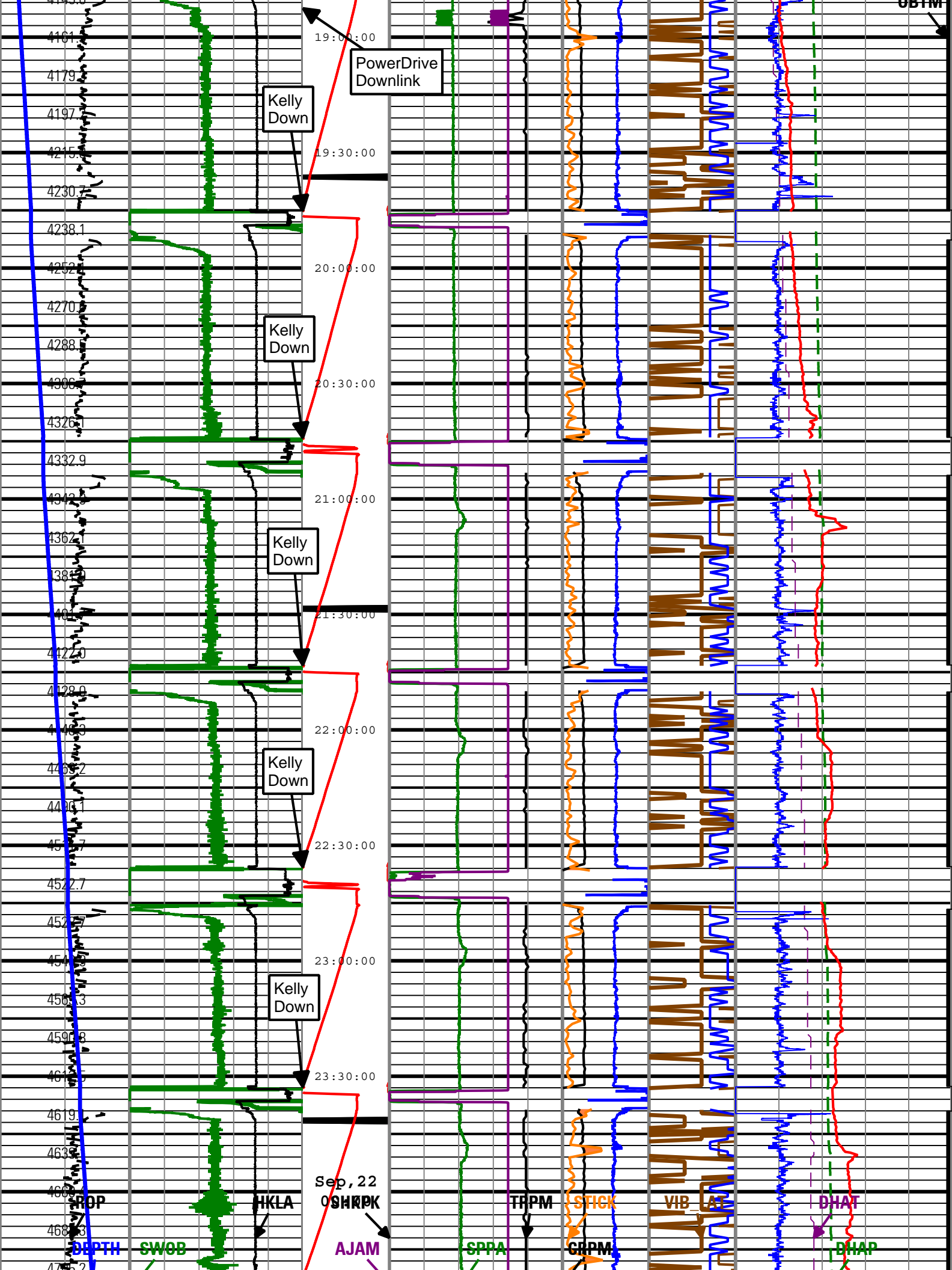
On Bottom

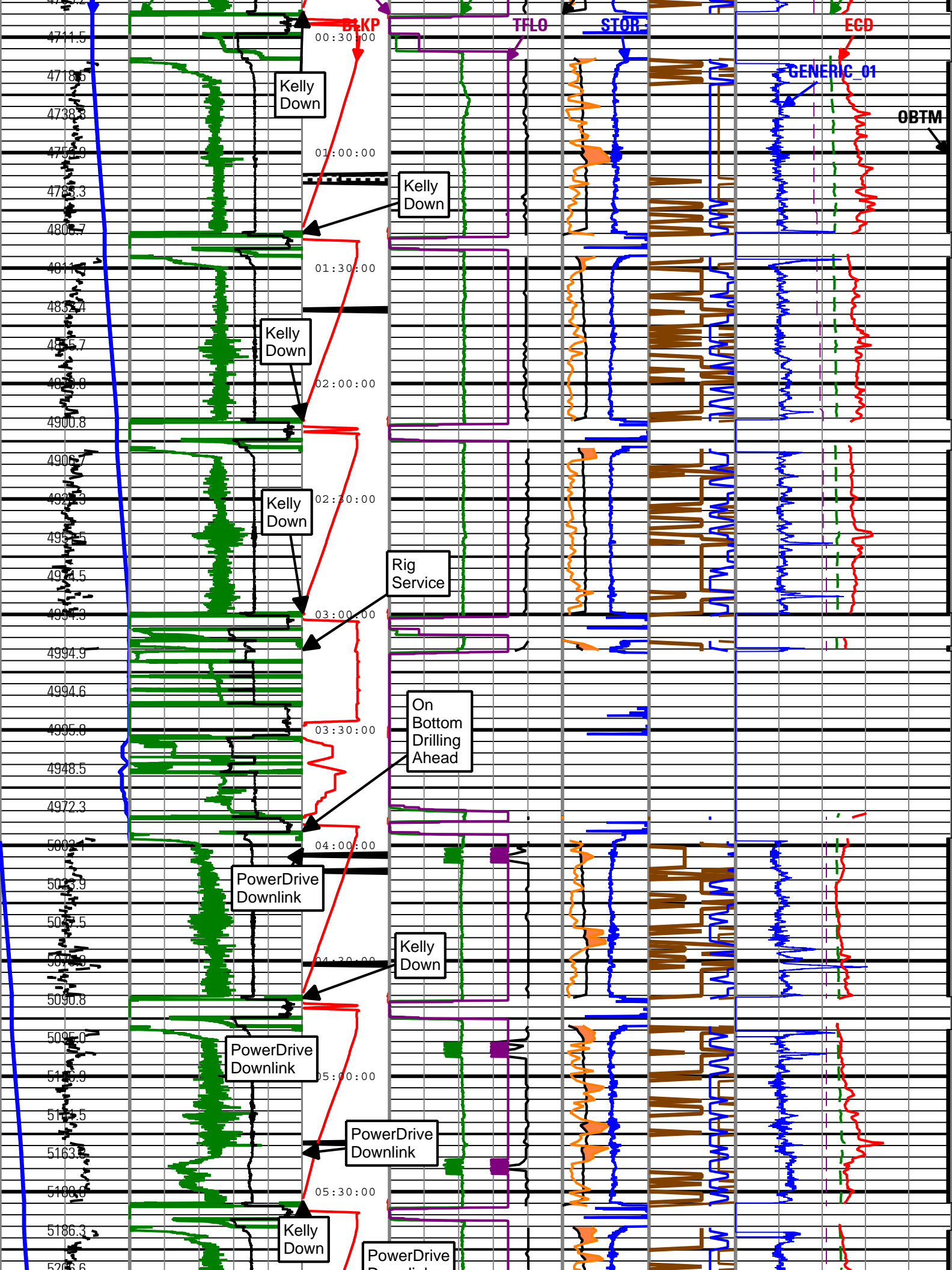
Rate of Penetration (ROP)			6.21619 gn			(CRPM)			RMS Vibration (VIB_LAT)			Downhole Annulus Temperature (DHAT)		
300 ft/h 0			Height of block above rig floor (BLKP)			Standpipe Pressure (SPPA)			0 c/min 400			75 degF 200		
Depth Index (DEPTH)			Surface Weight On Bit (SWOB)			MWD Turbine Rotation Speed (TRPM)			Stick Slip Indicator (STICK)			Downhole Annulus Pressure (DHAP)		
0 ft			0 ft 150			1500 c/min 4500			0 c/min 400			0 psi 5000		
Depth Index (DEPTH)			Average Hookload (HKLA)			Total flow rate of all active pumps (TFLO)			Surface Torque (STOR)			Generic Channel One (GENERIC_01)		
0 ft 1000			500 1000 lbf 0			0 gal/min 1000			40 0 1000 ft.lbf			0 100		
			25 0									Equivalent Circulating Density (ECD)		
												8.5 lbm/gal 11		

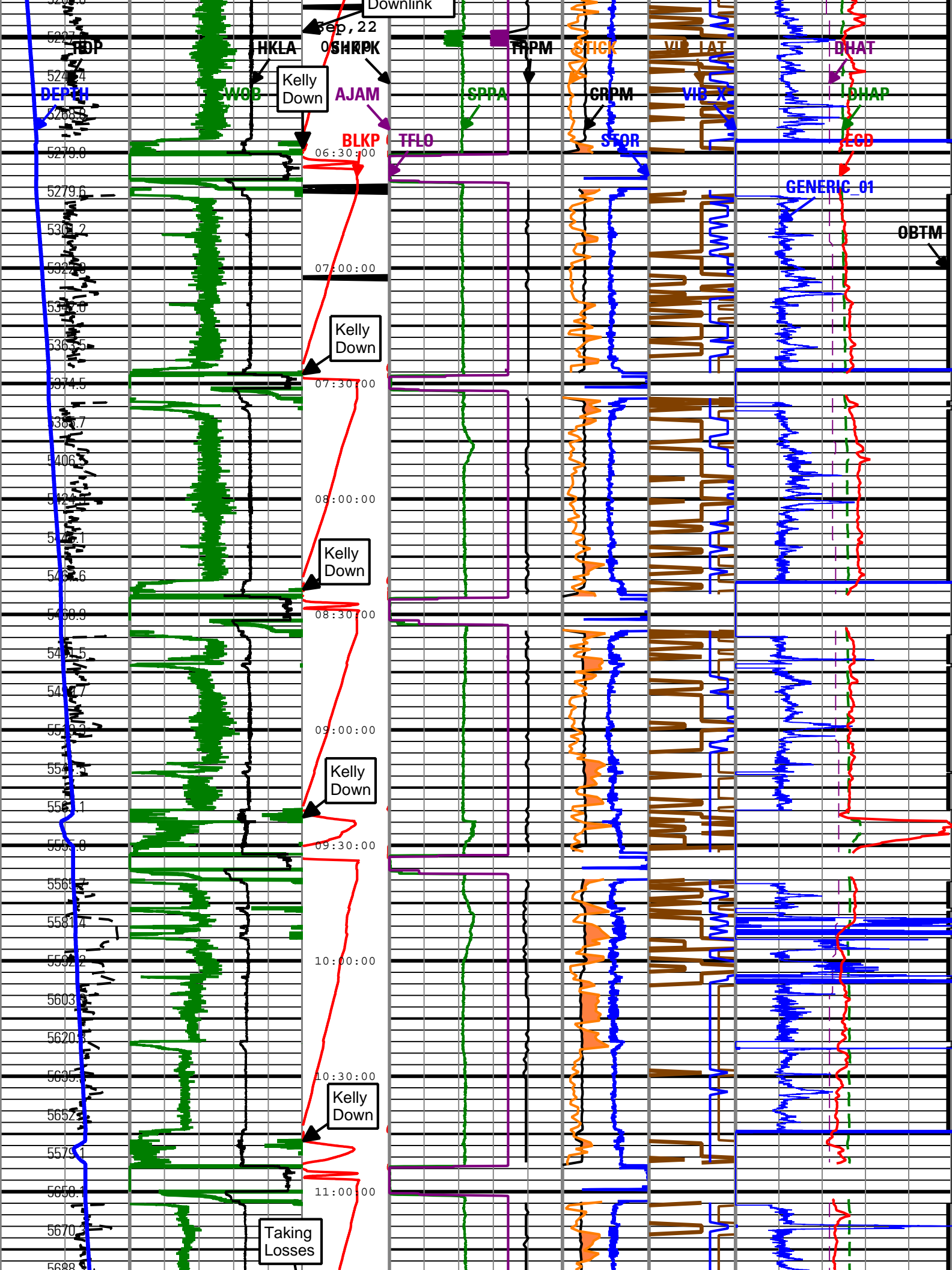


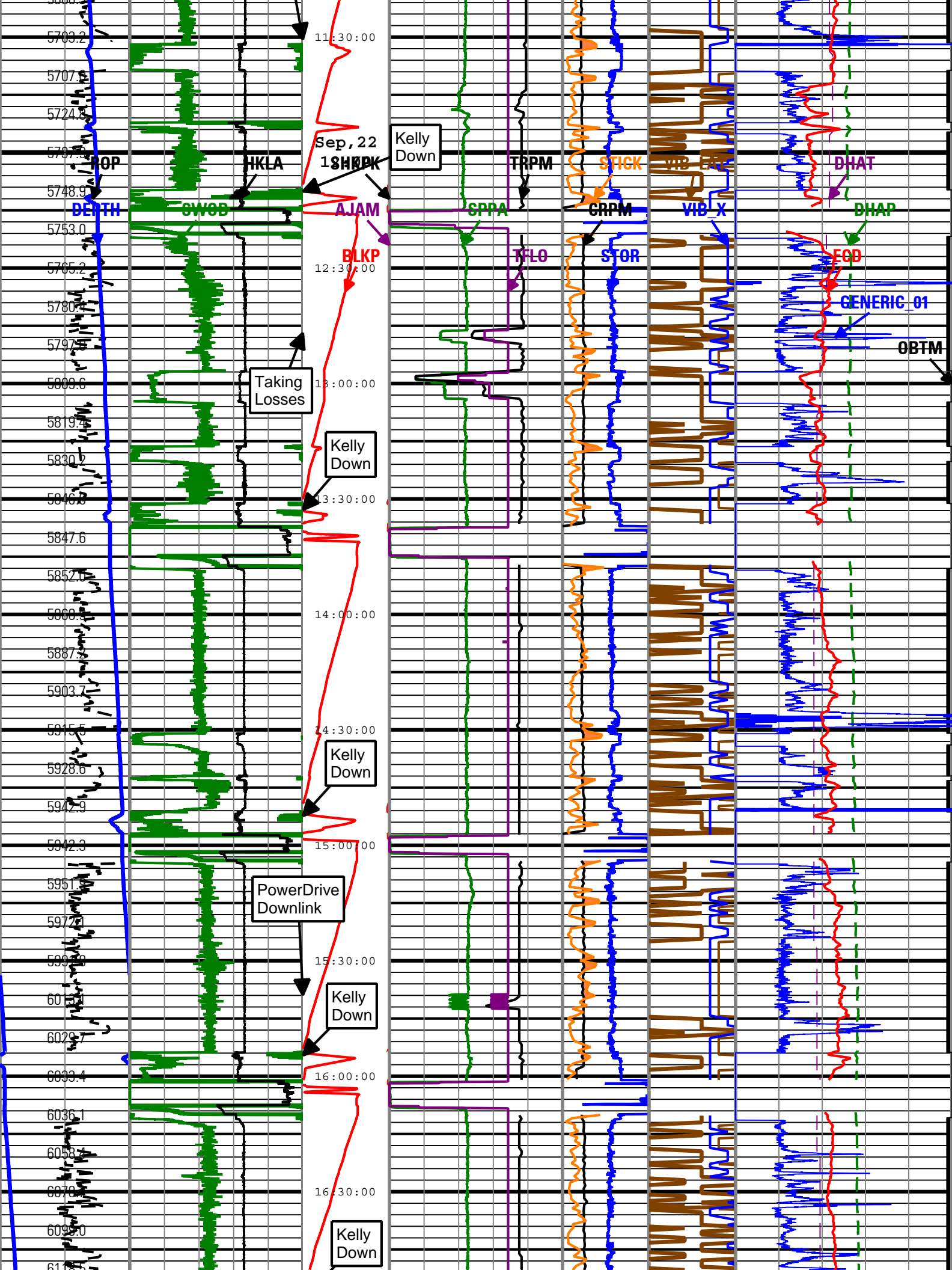


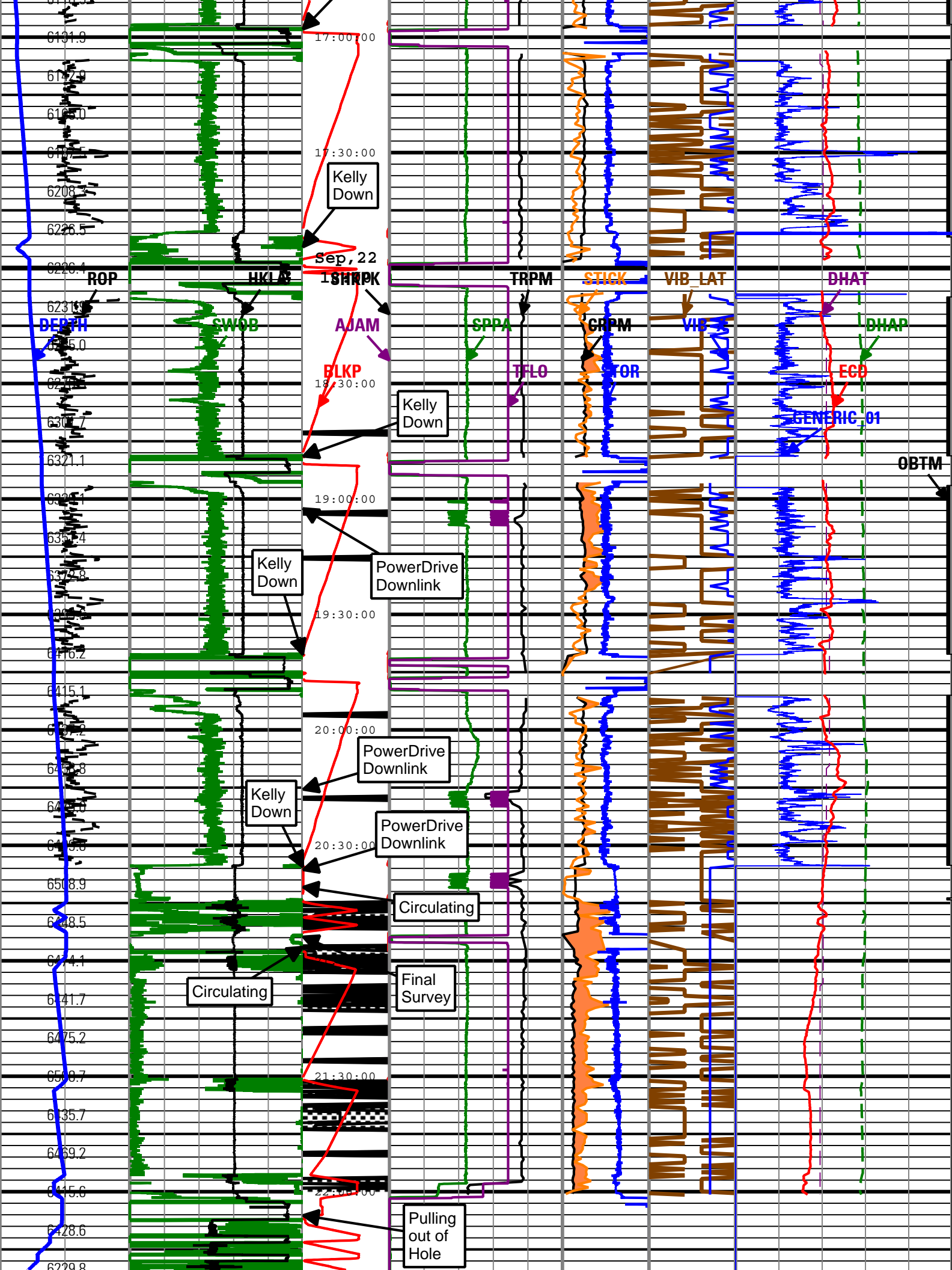


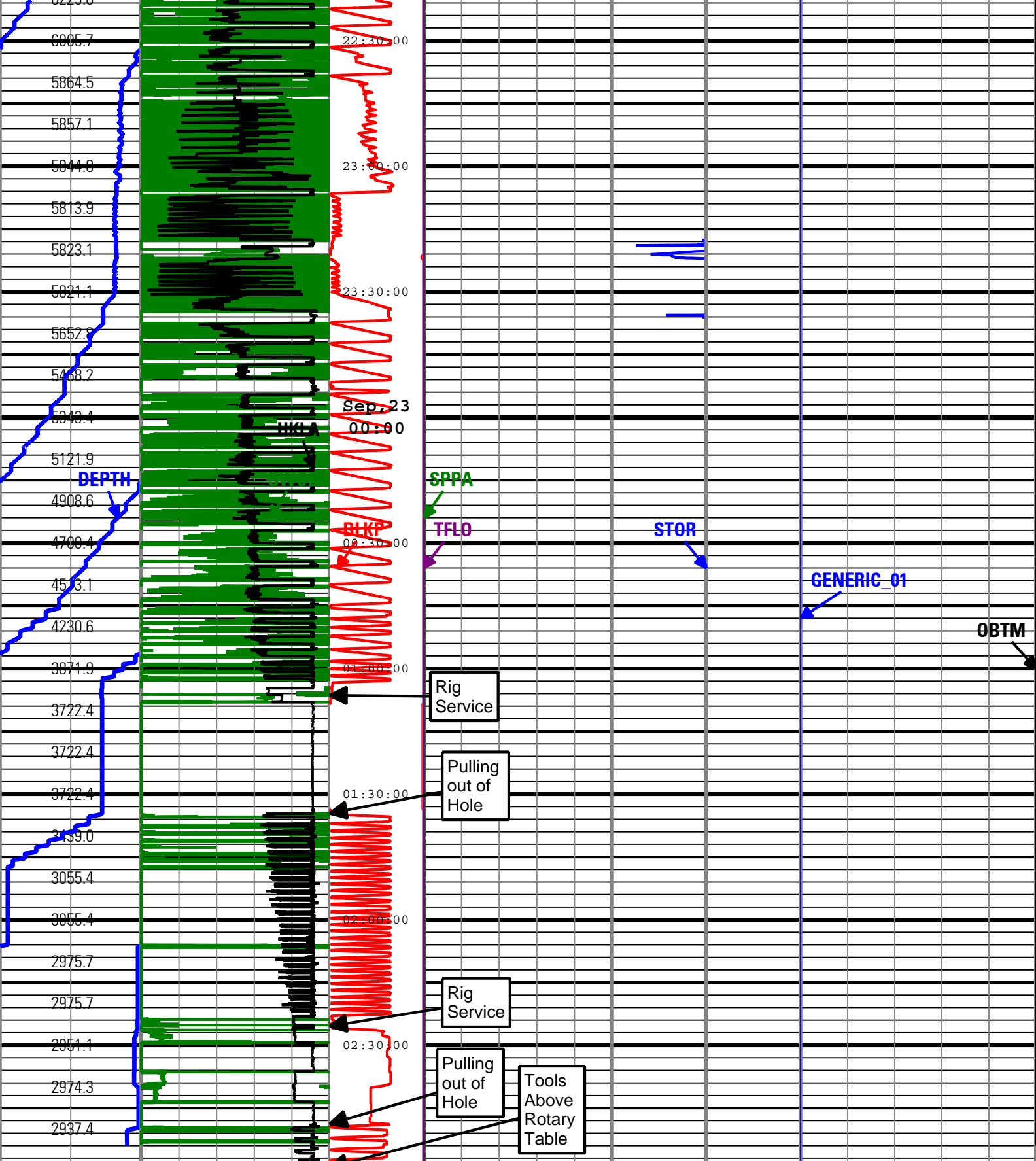












Rate of Penetration (ROP)	Surface Weight On Bit (SWOB)	Shock Peak (SHKPK)	Standpipe Pressure (SPPA)	High Stick	Shock Risk	On Bottom
300 ft/h 0	0 1000 lbf 50	6.21619 0	0 psi 5000	Collar Rotational Speed (CRPM)	Transverse RMS Vibration (VIB_LAT)	Downhole Annulus Temperature (DHAT)
Depth Index (DEPTH)	Average Hookload (HKLA)	6.21619 gn	MWD Turbine Rotation Speed (TRPM)	0 c/min 400	0 0.31081 gn	75 degF 200
ft	500 1000 lbf 0	Height of block above rig floor	1500 c/min 4500	Stick Slip Indicator	RMS	Downhole Annulus Pressure (DHAP)
Depth Index (DEPTH)			Total flow rate of all active pumps (TFLO)			0 psi 5000
0 ft 1000						Generic Channel One (GENERIC_01)

0	gal/min	1000	(STICK)	RMS Vibration, X-Axis (VIB_X)	Generic Channel One (GENERIC_01)
0	ft	150	0	c/min 400	0
Number of Anti-Jams Detected (AJAM)	Surface Torque (STOR)	40	0	-0.305915 0.305915 gn	Equivalent Circulating Density (ECD)
25	0	1000 ft.lbf			8.5 lbm/gal 11

Description: PowerPulse/APWD Drilling Mechanics Time Format: Log (APWD Log) Index Scale: 2 in per 3600 s Index Type: Time Creation Date: 23-Sep-2009 03:57:27

Channel Processing Parameters

Parameter	Description	ToolPath	Value	Unit
FLEV	Depth of Drilling Fluid Level to LMF (Log Measured From)	Borehole	8	ft
RHO_SEAWATER	Density of the Sea Water	Borehole	1.02	g/cm3
SF_FLAG	Mud Return to Sea Floor (No Riser)?	Borehole	No	

Tool Control Parameters

Parameter	Description	ToolPath	Value	Unit
OFFBTM_TH	Threshold for deciding whether the bit is off bottom		0	ft

Company: ExxonMobil Oil Corporation

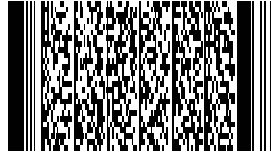
Well: Piceance Creek Unit 297 11B1

Field: Piceance Creek

County: Rio Blanco

State: Colorado

Country: USA





PERFORM-APWD

2 in/hr Time Based

Real Time Log