

Company	Pioneer Natural Resources
Well	Lickity Split 43-12
Field	Purgatoire River
County	Las Animas
	State
	Colorado

API#: 05 071 09702 00

1623' ES1 & 372' EE1

SEC 12 TWP 32S RGE 67W

Permanent Datum	Ground Level	Elevation	7548
Log Measured From	Kelly Bushing 4' AGL		
Drilling Measured From	Kelly Bushing		

Elevation

G.L. 7548

Date	12-28-09
------	----------

Depth Driller	2800
---------------	------

Depth Logger	2750
--------------	------

Bottom Logged Interval	2748
------------------------	------

Top Log Interval	Surface
11-12	7-7.5

Open Hole Size	1 1/8
----------------	-------

Density / Viscosity	Value
---------------------	-------

Max Recorded Temp	120 Deg
Density / viscosity	///

Estimated Cement Top	340'
----------------------	------

Time Well Ready	4:00 p.
-----------------	---------

Time Logger on Bottom	4:30 p.
-----------------------	---------

Equipment Number	T747
------------------	------

| Location | Trinidad, |

Witnessed By	Mr Tom Ba
Recorded by	L. Smi

Witnessed by	WIT. JOHN DE
Borehole Record	

Run Number	Bit	From	To
------------	-----	------	----

--	--	--	--

[illegible]

Casino Record	Size	Age
1	1	1
2	2	2
3	3	3
4	4	4
5	5	5
6	6	6
7	7	7
8	8	8
9	9	9
10	10	10
11	11	11
12	12	12
13	13	13
14	14	14
15	15	15
16	16	16
17	17	17
18	18	18
19	19	19
20	20	20
21	21	21
22	22	22
23	23	23
24	24	24
25	25	25
26	26	26
27	27	27
28	28	28
29	29	29
30	30	30
31	31	31
32	32	32
33	33	33
34	34	34
35	35	35
36	36	36
37	37	37
38	38	38
39	39	39
40	40	40
41	41	41
42	42	42
43	43	43
44	44	44
45	45	45
46	46	46
47	47	47
48	48	48
49	49	49
50	50	50
51	51	51
52	52	52
53	53	53
54	54	54
55	55	55
56	56	56
57	57	57
58	58	58
59	59	59
60	60	60
61	61	61
62	62	62
63	63	63
64	64	64
65	65	65
66	66	66
67	67	67
68	68	68
69	69	69
70	70	70
71	71	71
72	72	72
73	73	73
74	74	74
75	75	75
76	76	76
77	77	77
78	78	78
79	79	79
80	80	80
81	81	81
82	82	82
83	83	83
84	84	84
85	85	85
86	86	86
87	87	87
88	88	88
89	89	89
90	90	90
91	91	91
92	92	92
93	93	93
94	94	94
95	95	95
96	96	96
97	97	97
98	98	98
99	99	99
100	100	100

Surface String	8 5/8"	
----------------	--------	--

Prot. String		

Production String	5.5"	
-------------------	------	--

[illegible]

<<< Fold Here >>>

All interpretations are opinions based on inferences from electrical or other measurements and we cannot and do not guarantee the accuracy or correctness of any interpretation, and we shall not, except in the case of gross or willful negligence on our part, be liable or responsible for any loss, costs, damages, or expenses incurred or sustained by anyone resulting from any interpretation made by any of our officers, agents or employees. These interpretations are also subject to our general terms and conditions set out in our current Price Schedule.

Comments

Aguliar to Gulnare left on Sarcillo cut off second left and stay left to location.

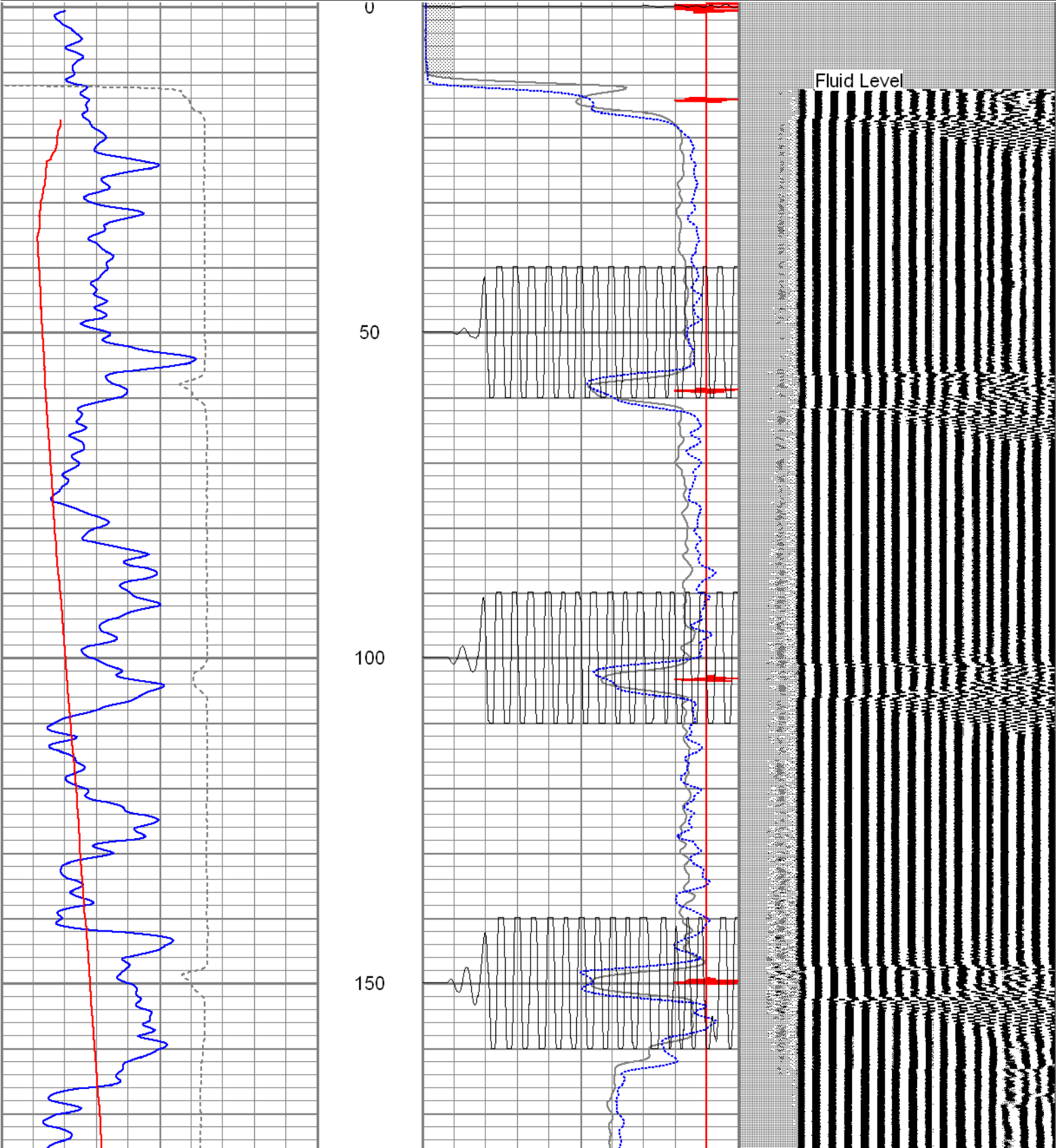
Short Joint 2414'---2428'

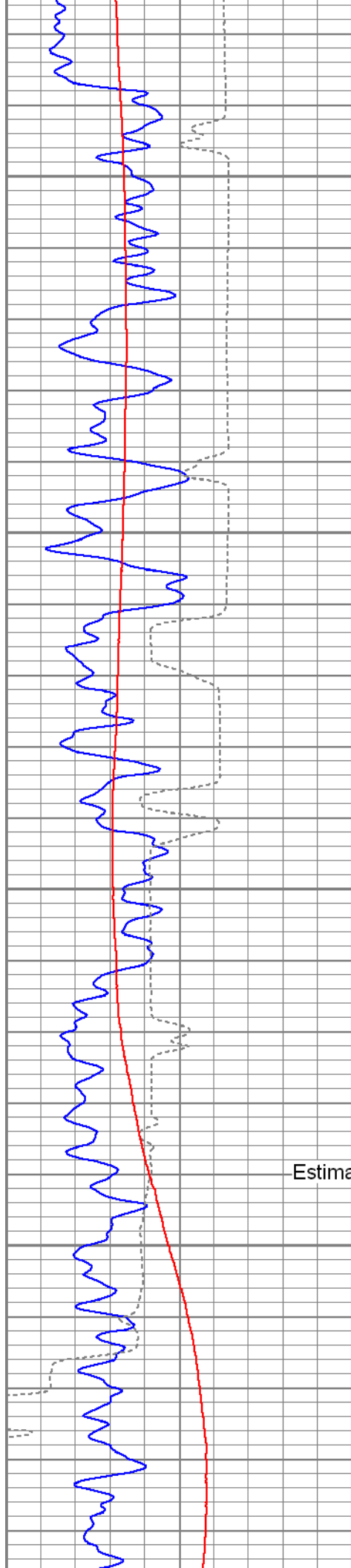
Thanks for using The Perforators



Database File: lickitysplit122809b.db
Dataset Pathname: pass2.1
Presentation Format: cblpnr
Dataset Creation: Mon Dec 28 17:37:14 2009 by Calc Std Casedhole 09061
Charted by: Depth in Feet scaled 1:240

0	GR (GAPI) (GAPI)	200	0	AMP3FT (mV)	100	200	variable density	1200
400	TT3FT (usec)	200	18	CCL	-2			
0	DEVI (°)	10	0	AMP5FT (mV)	100			
			200	WVF5FT	1200			





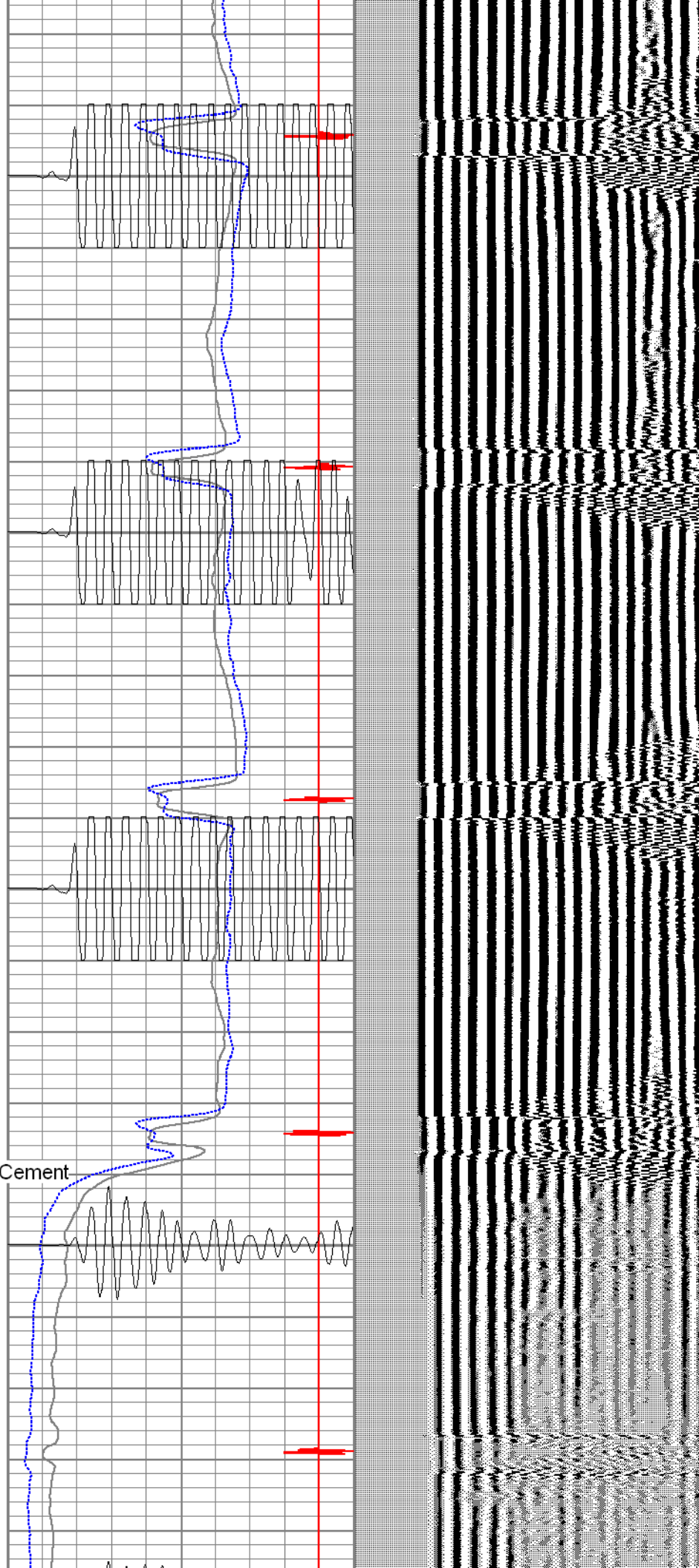
200

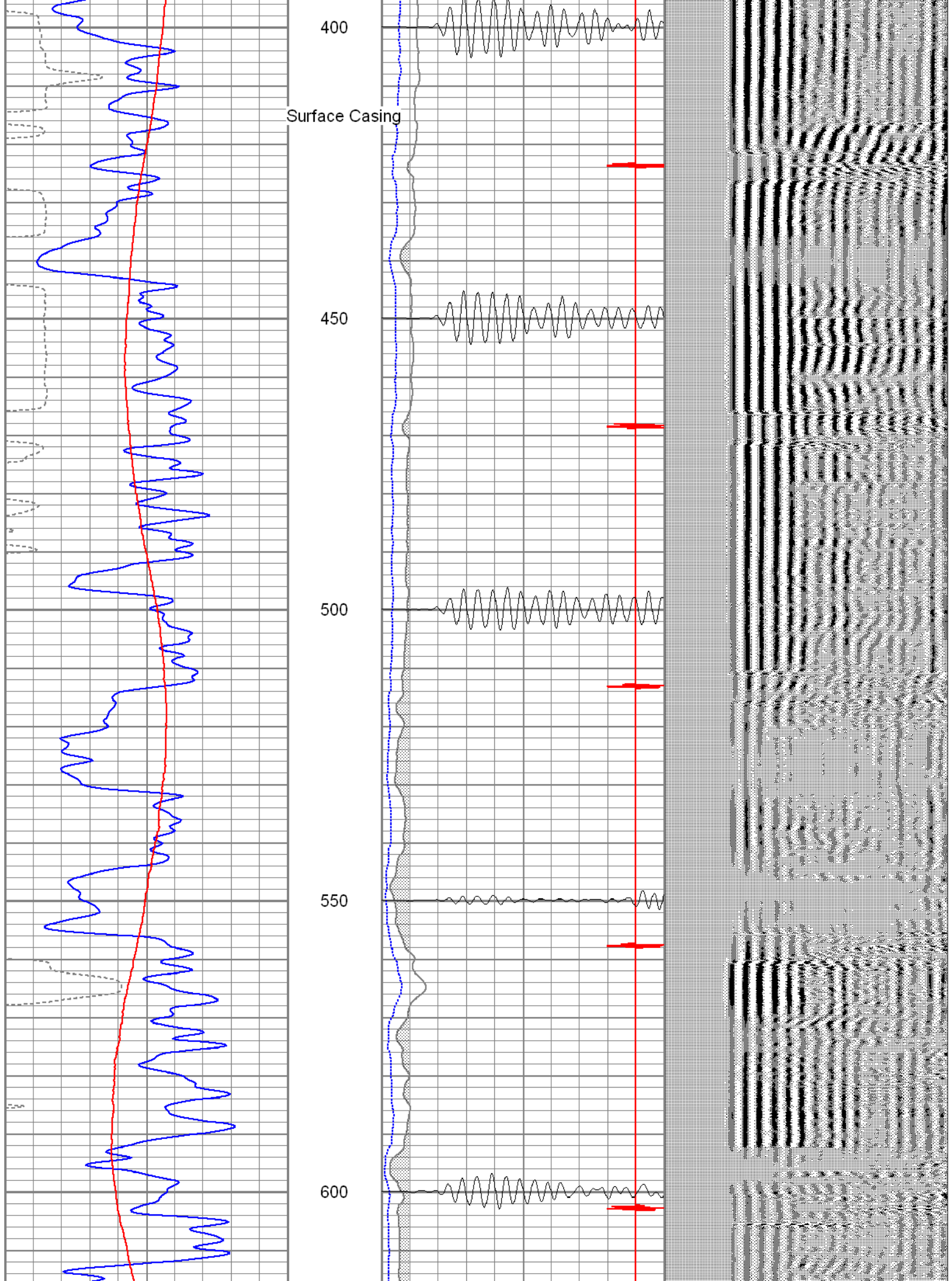
250

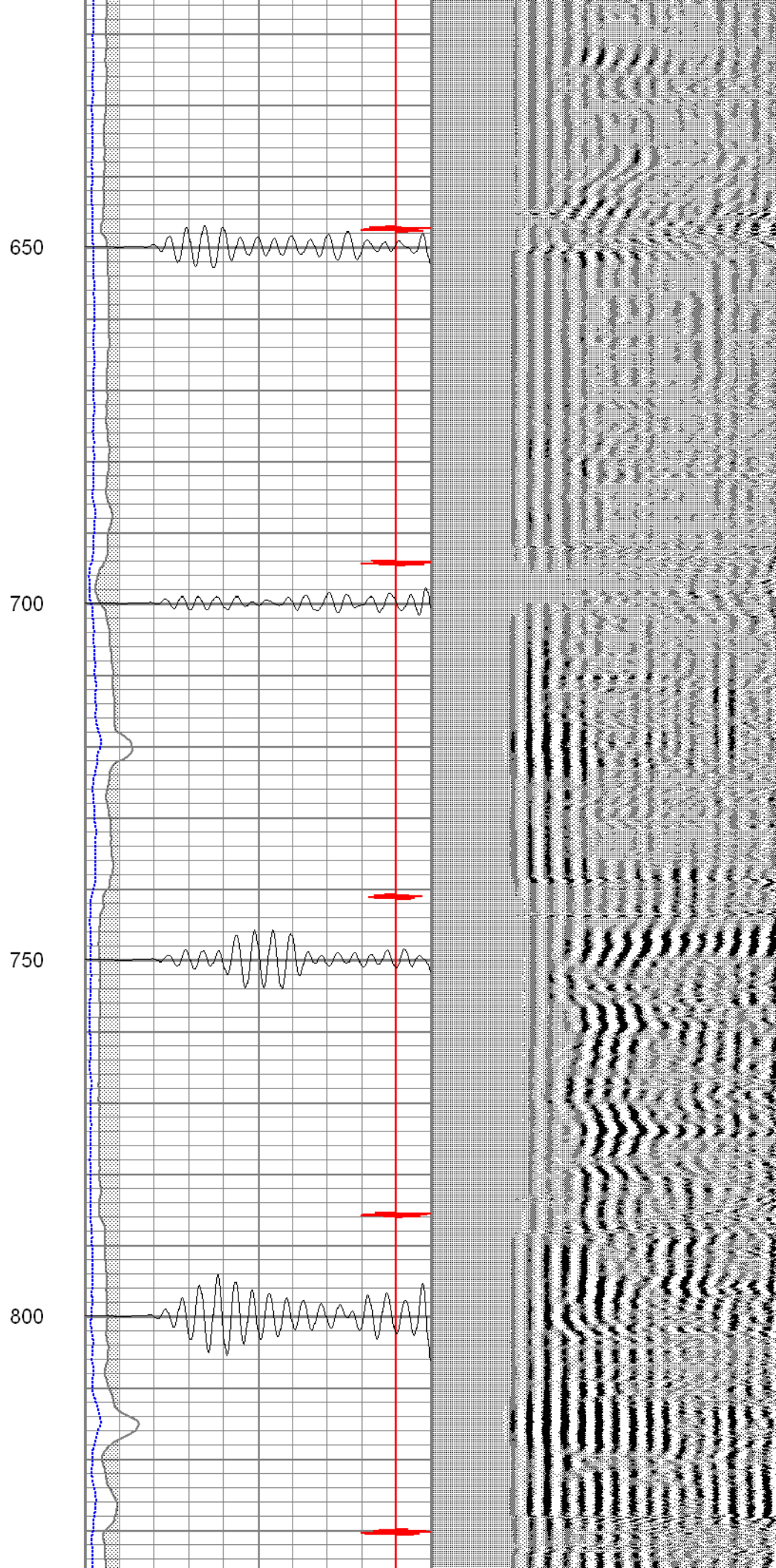
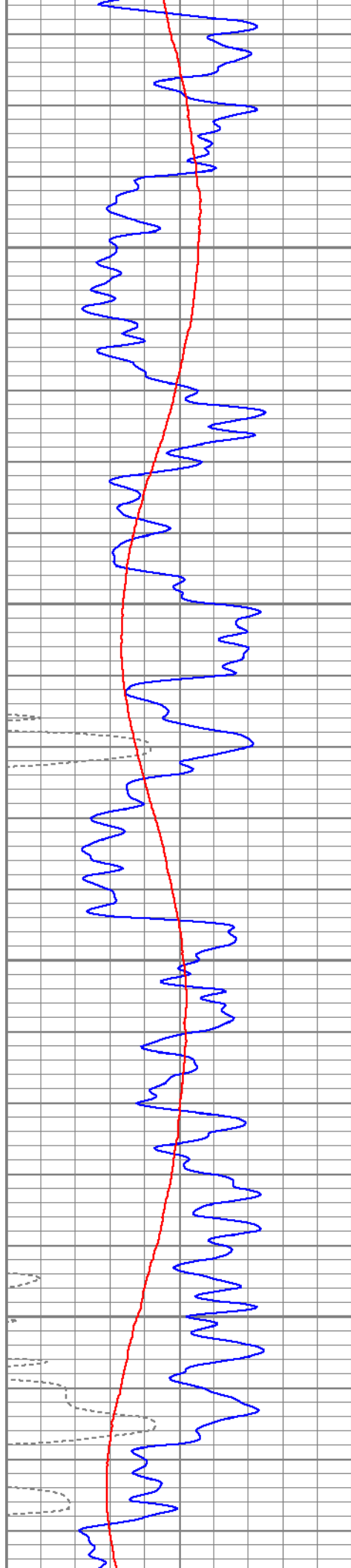
300

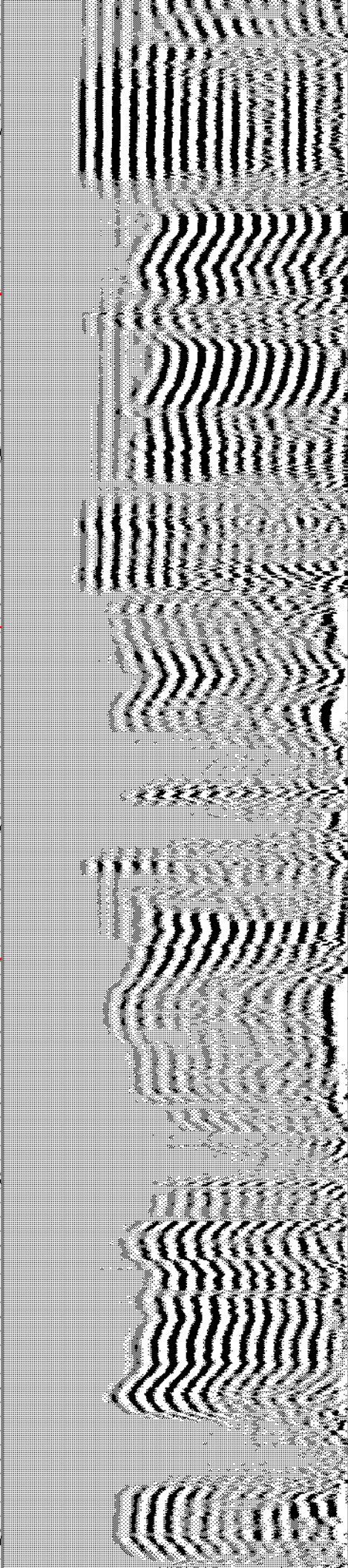
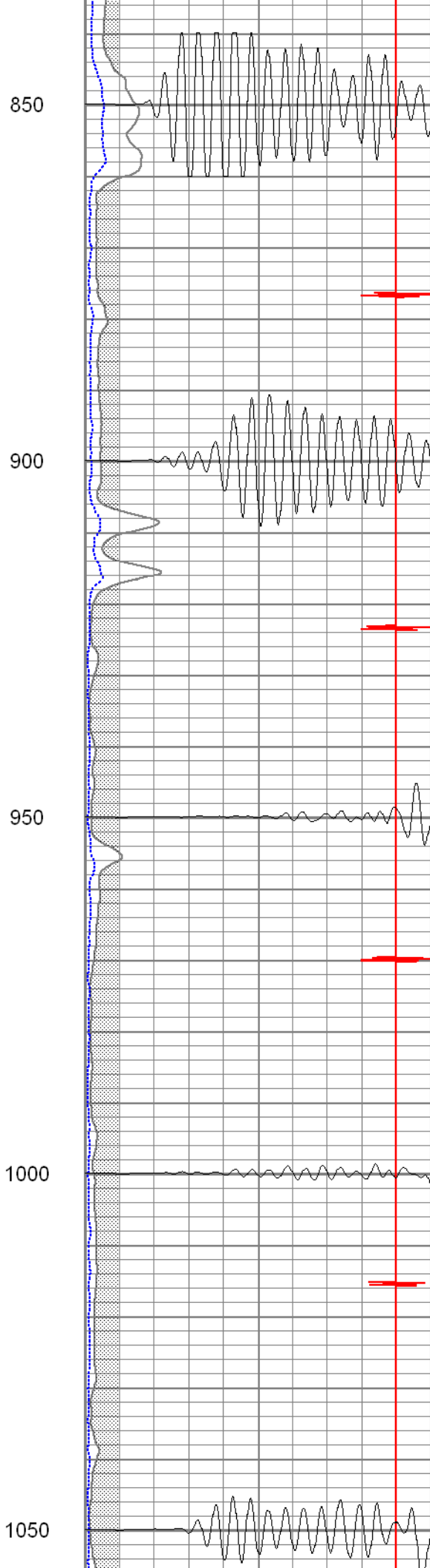
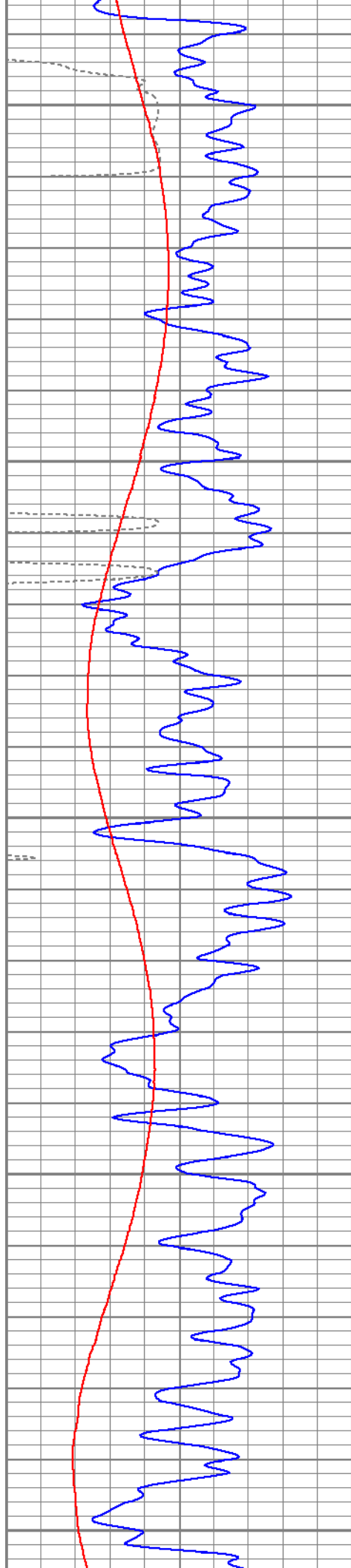
Estimated Top of Cement

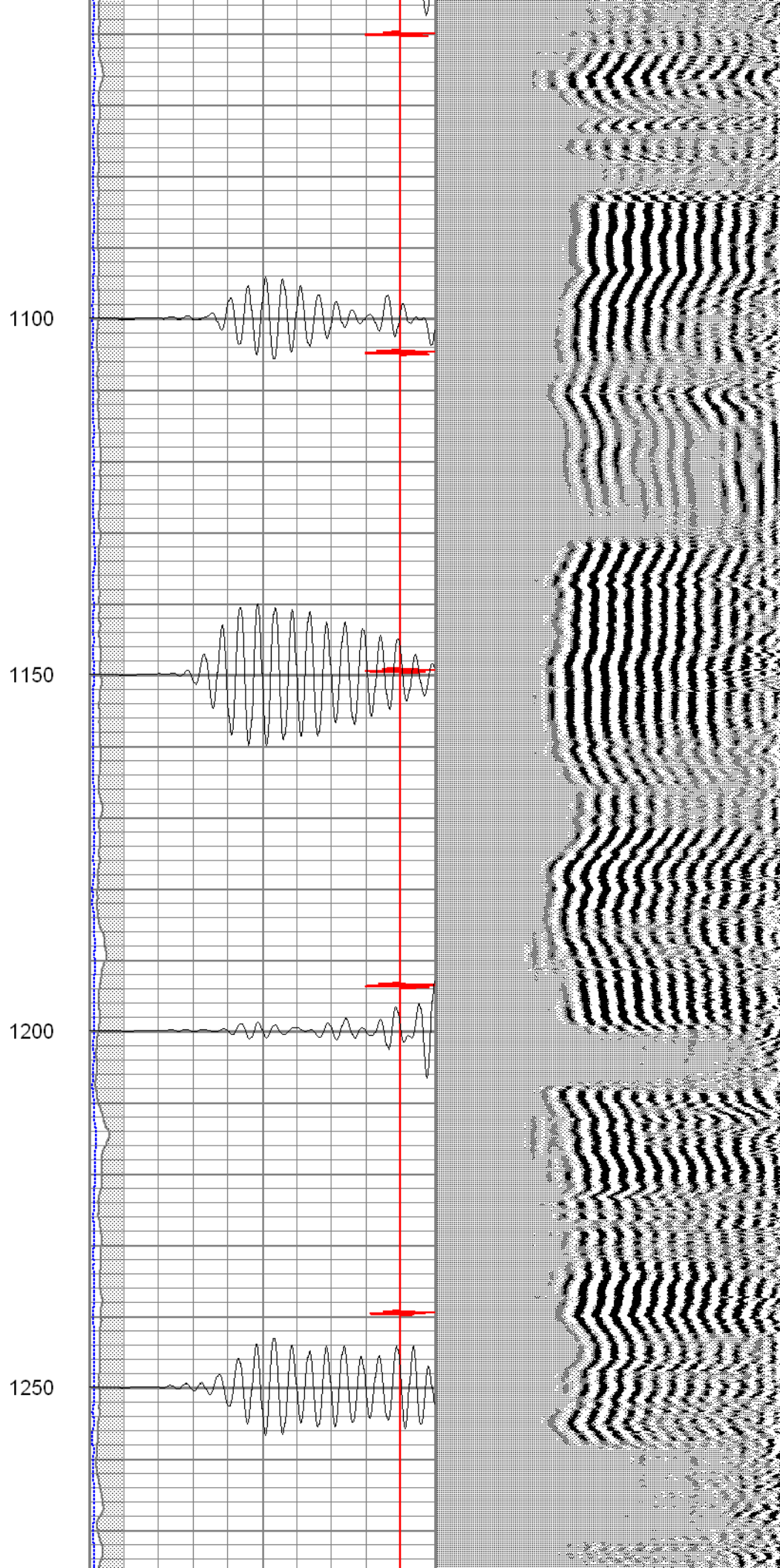
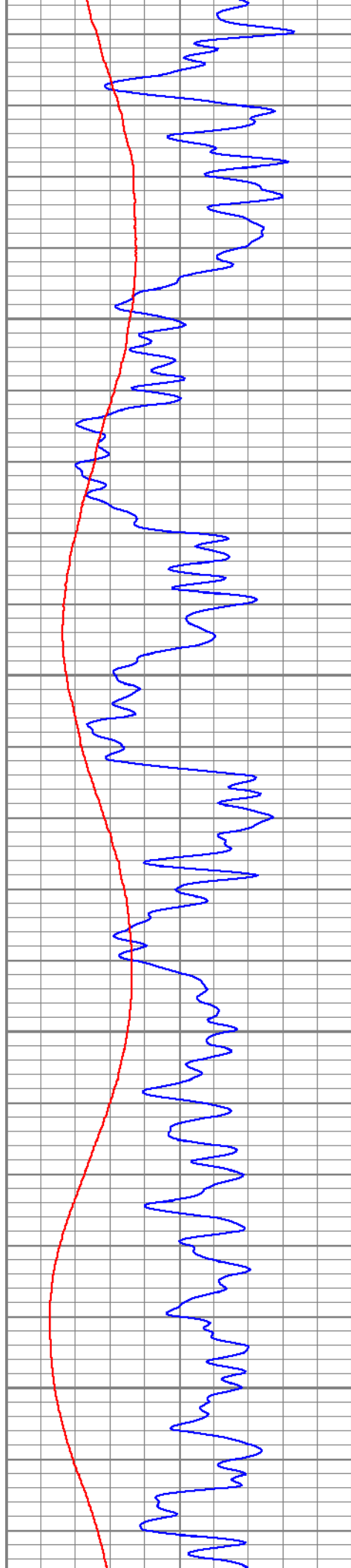
350

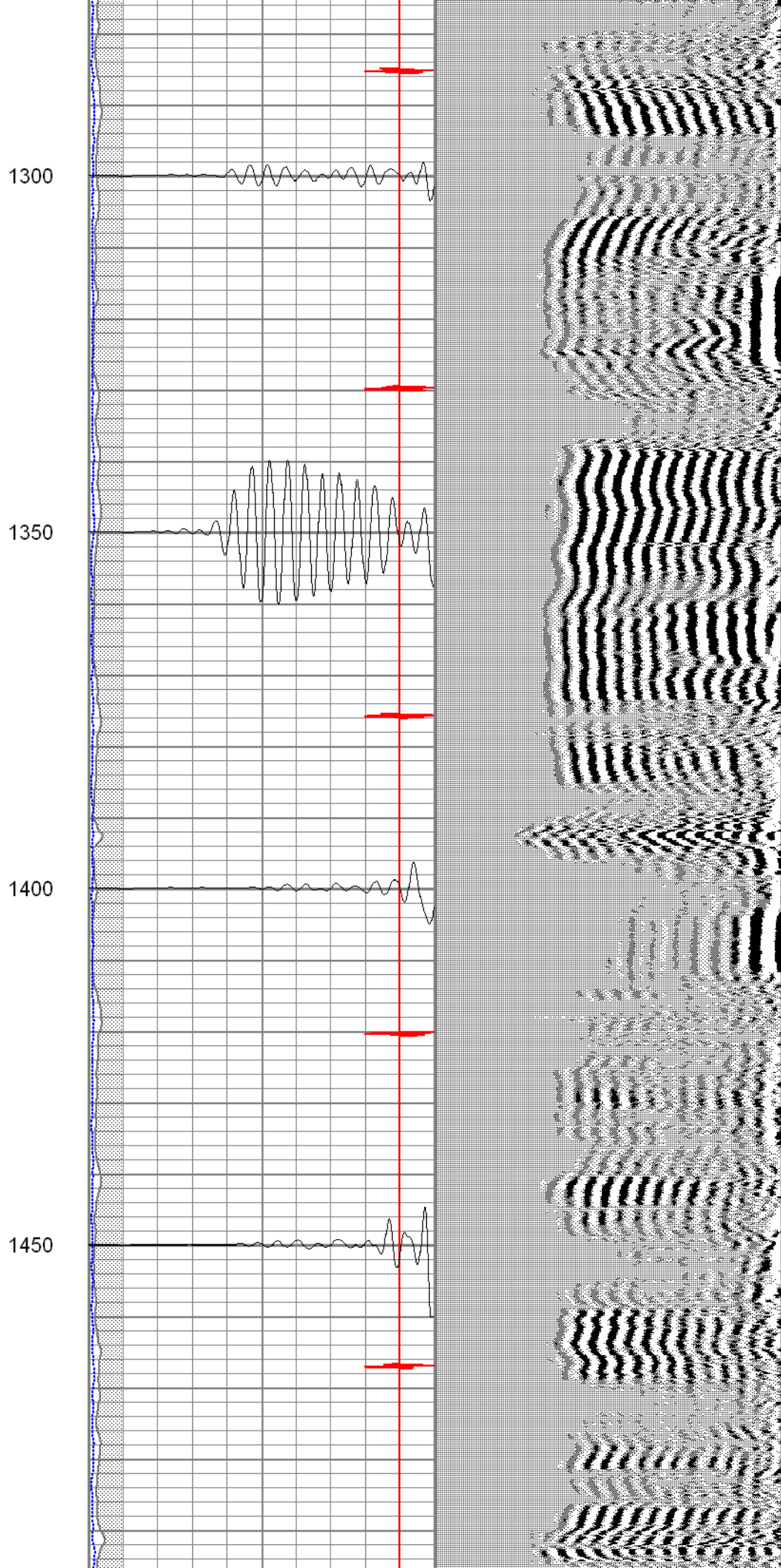
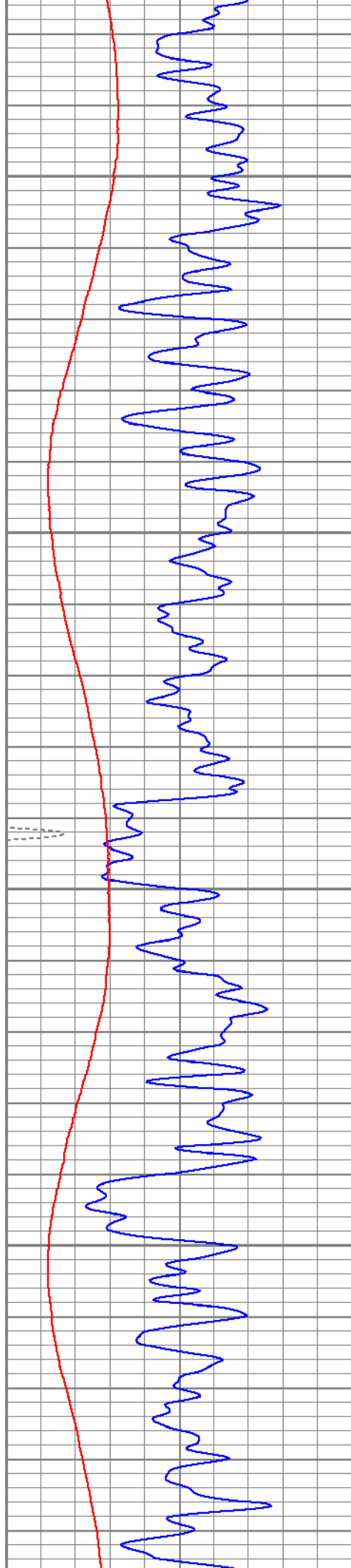


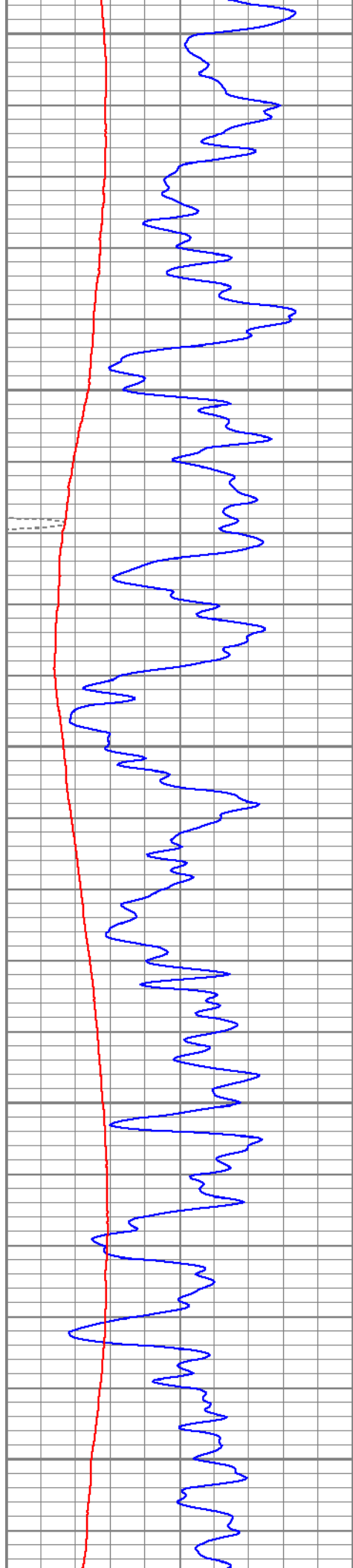












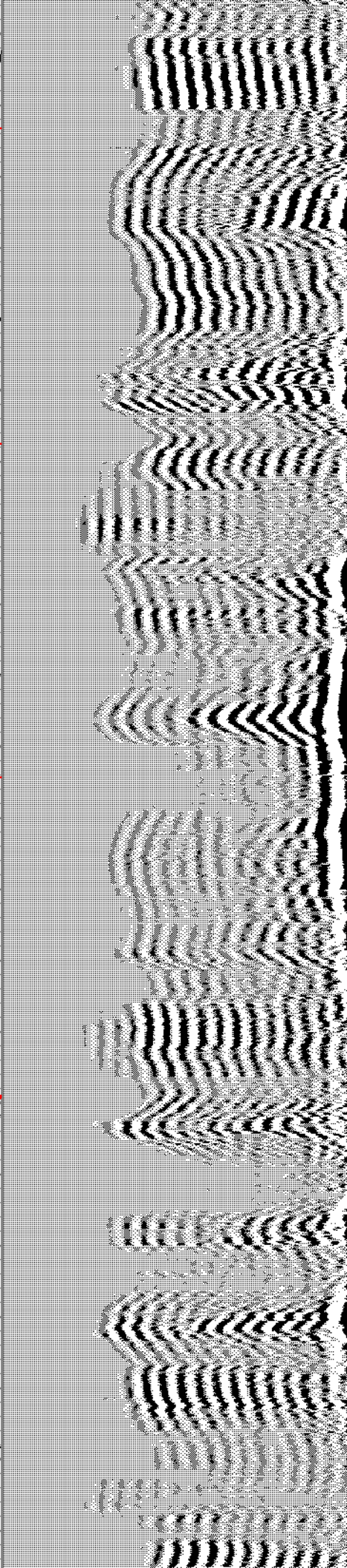
1500

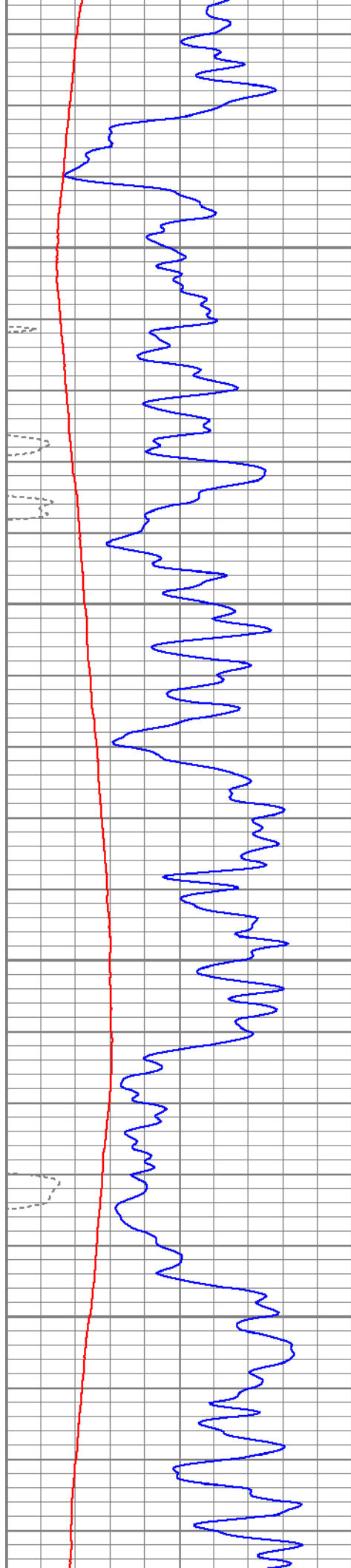
1550

1600

1650

1700



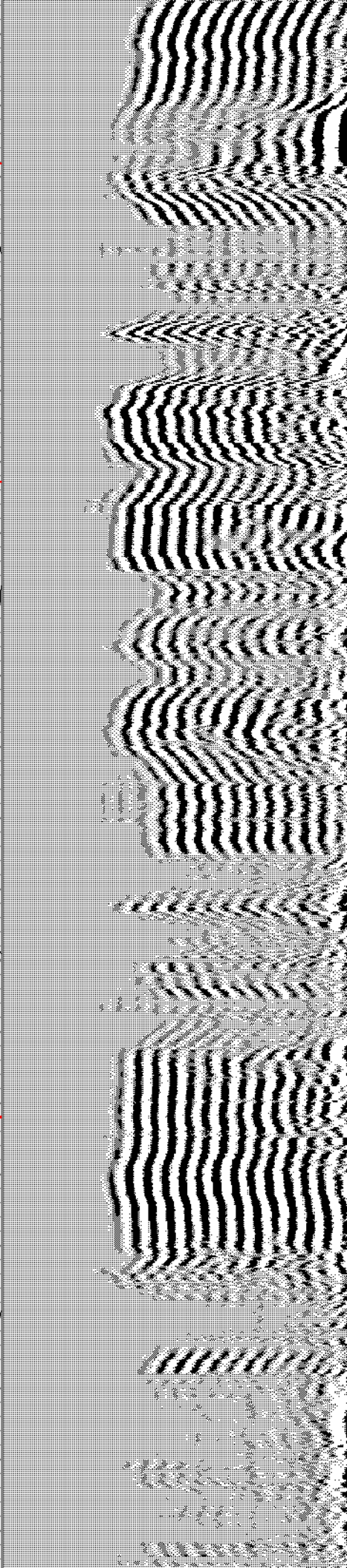
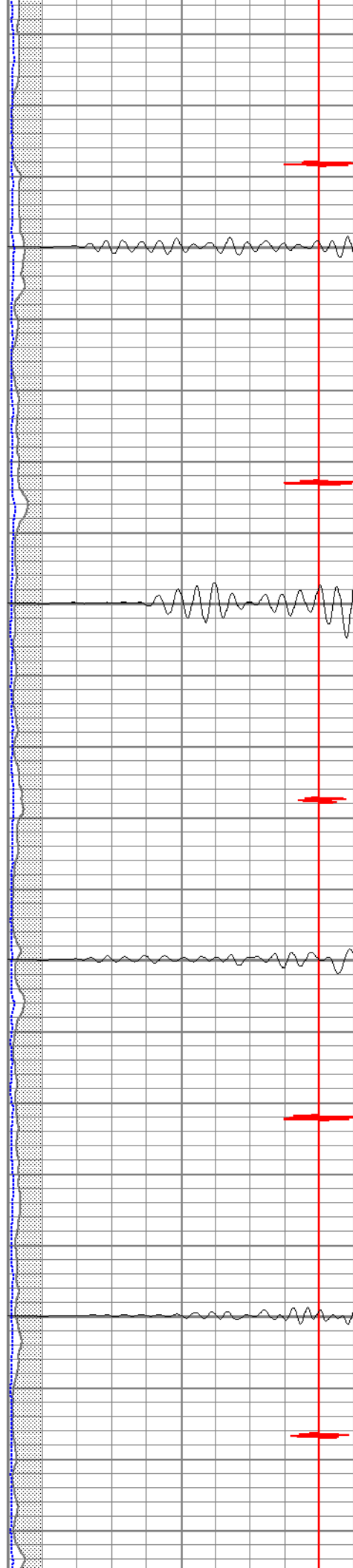


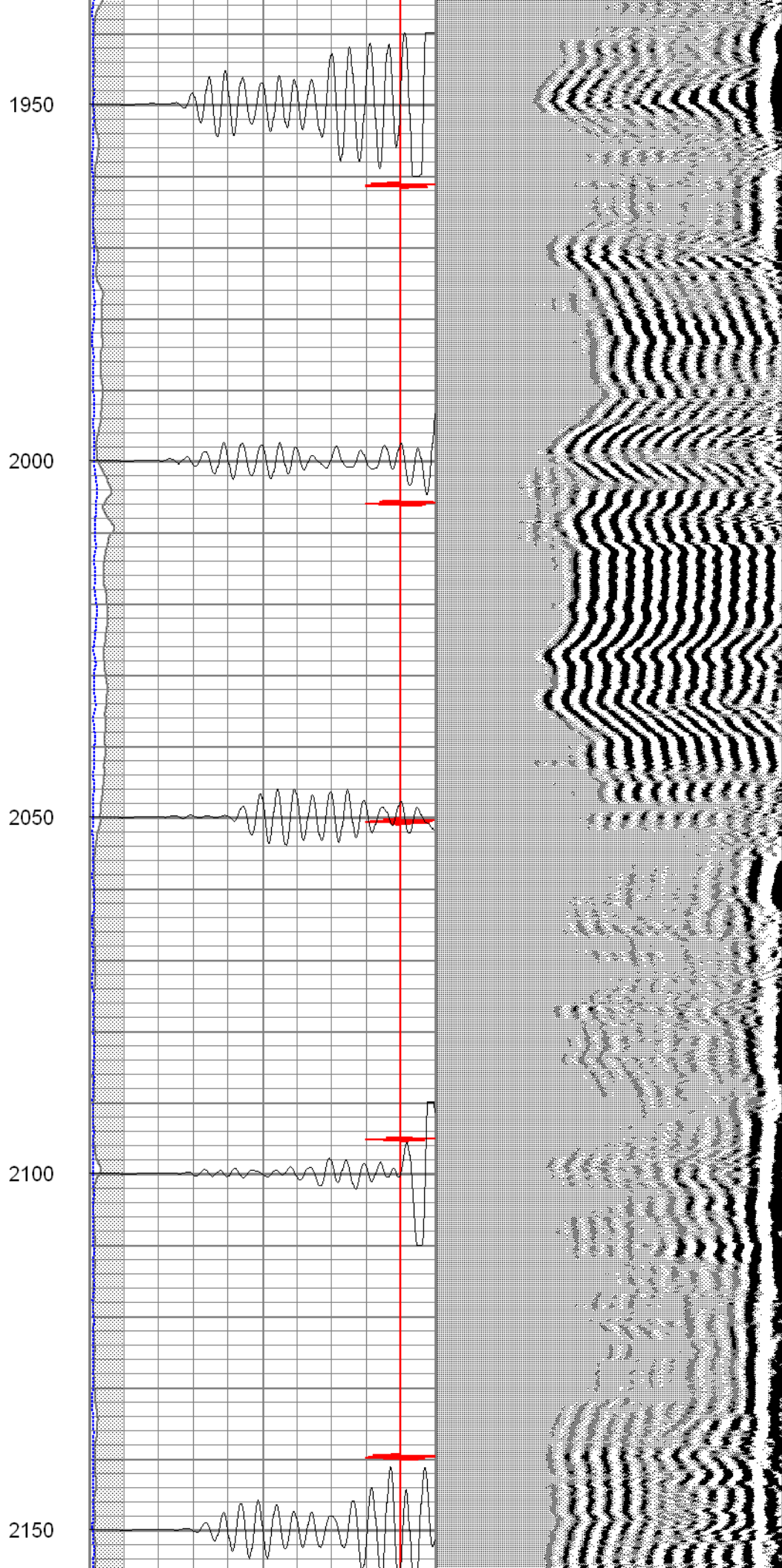
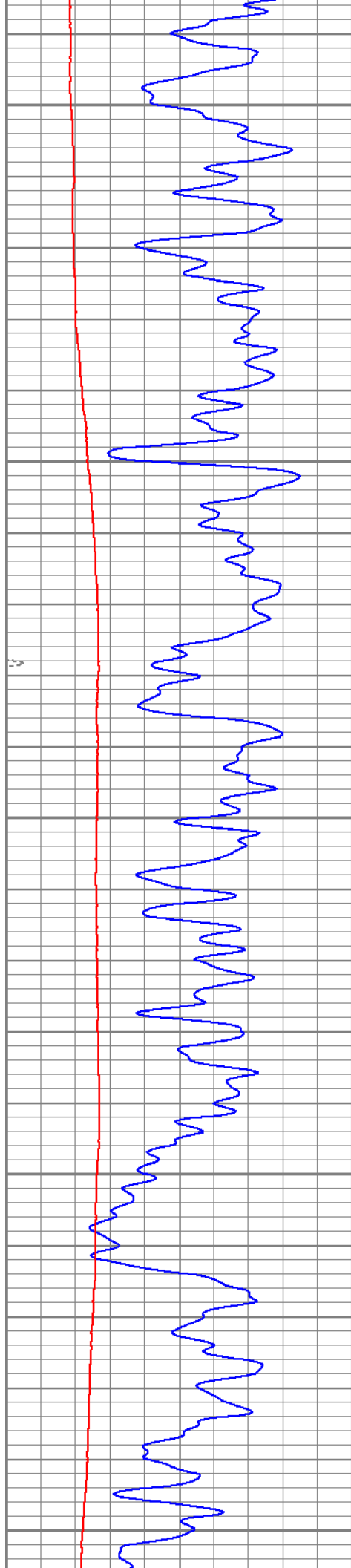
1750

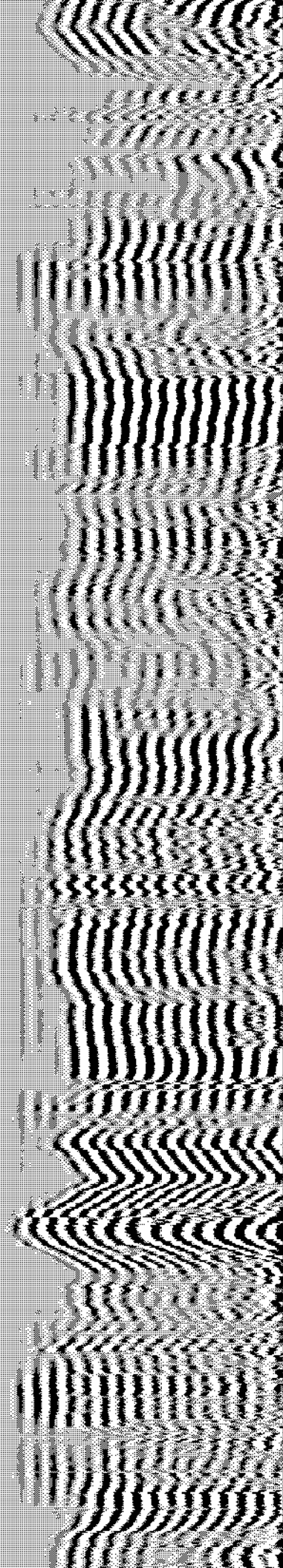
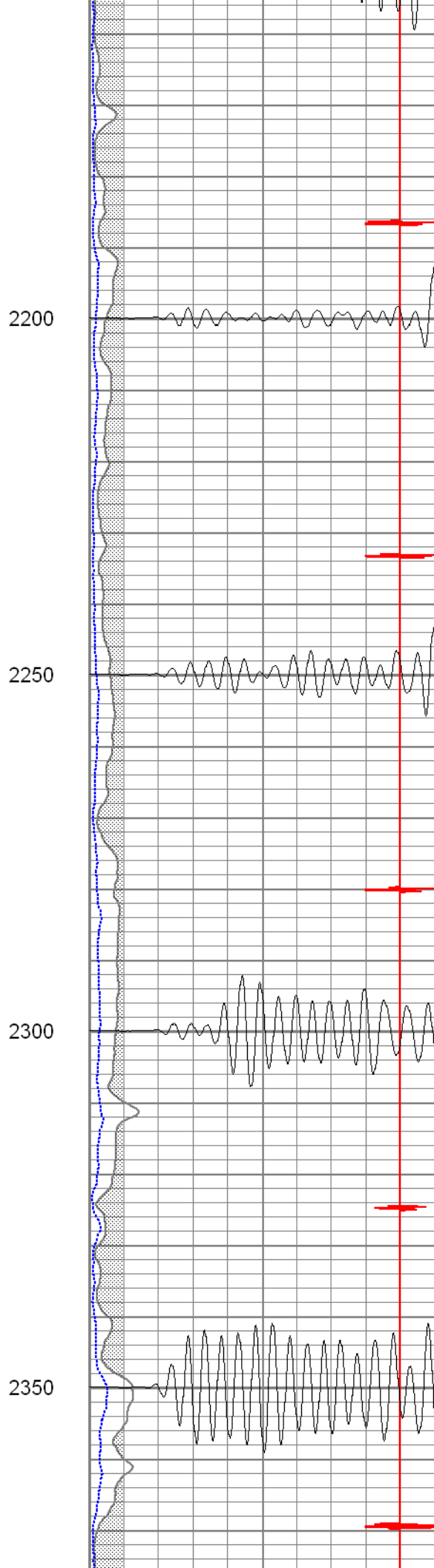
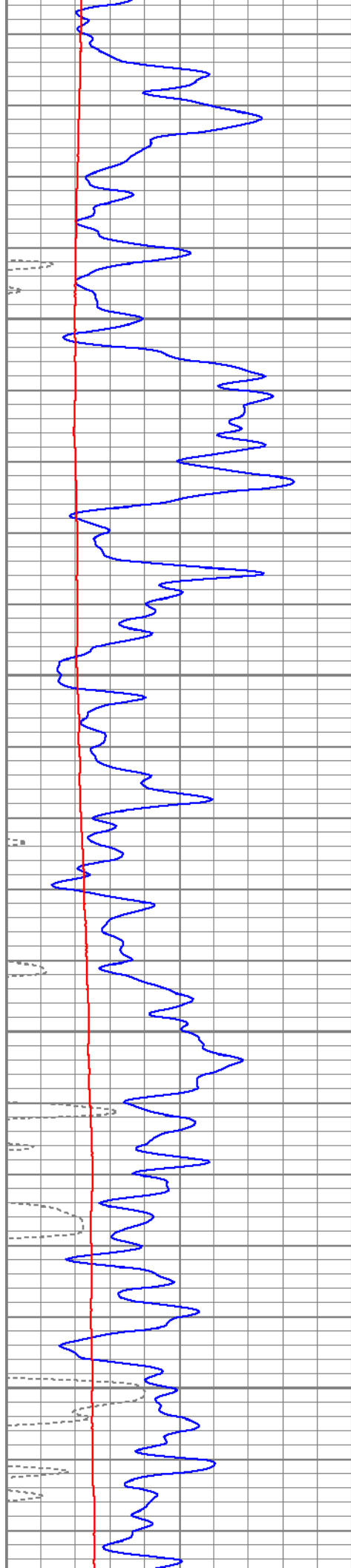
1800

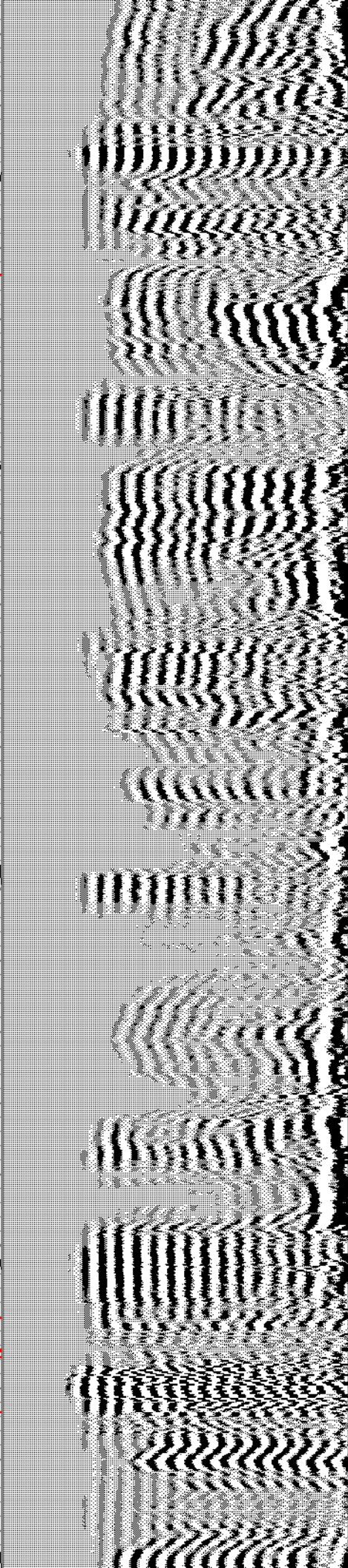
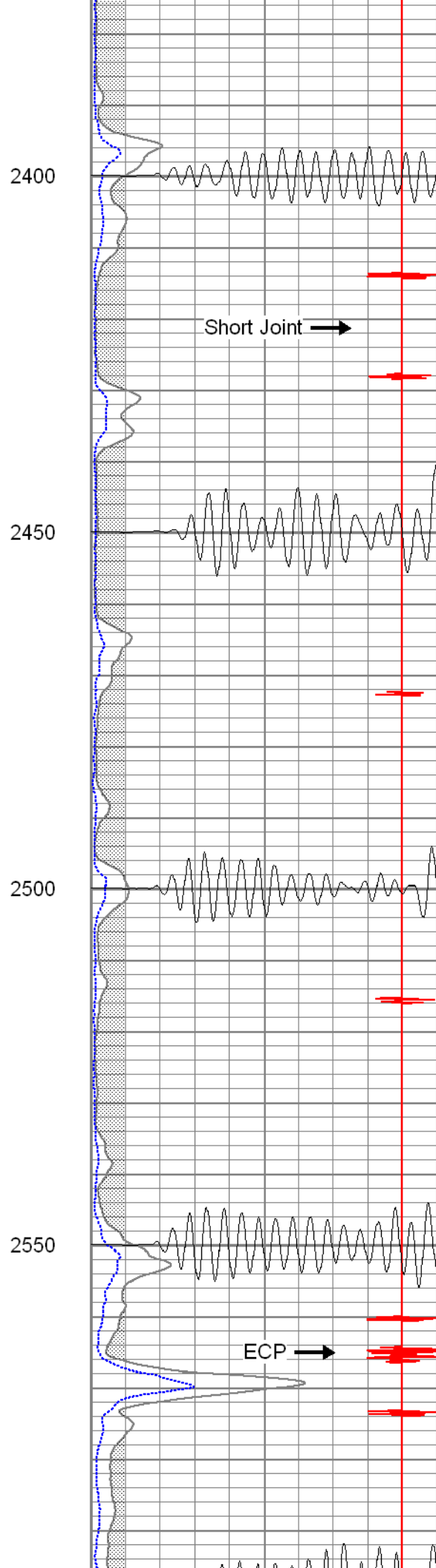
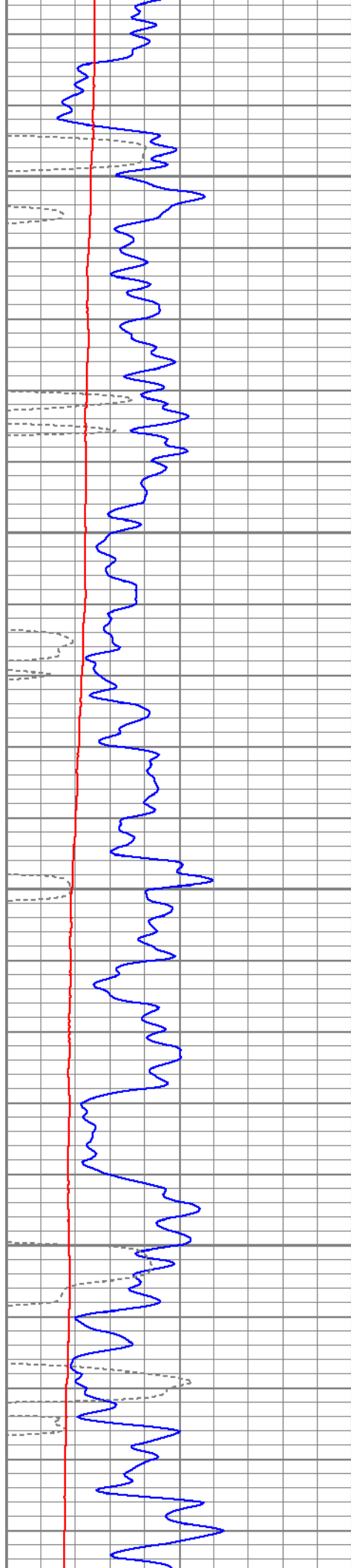
1850

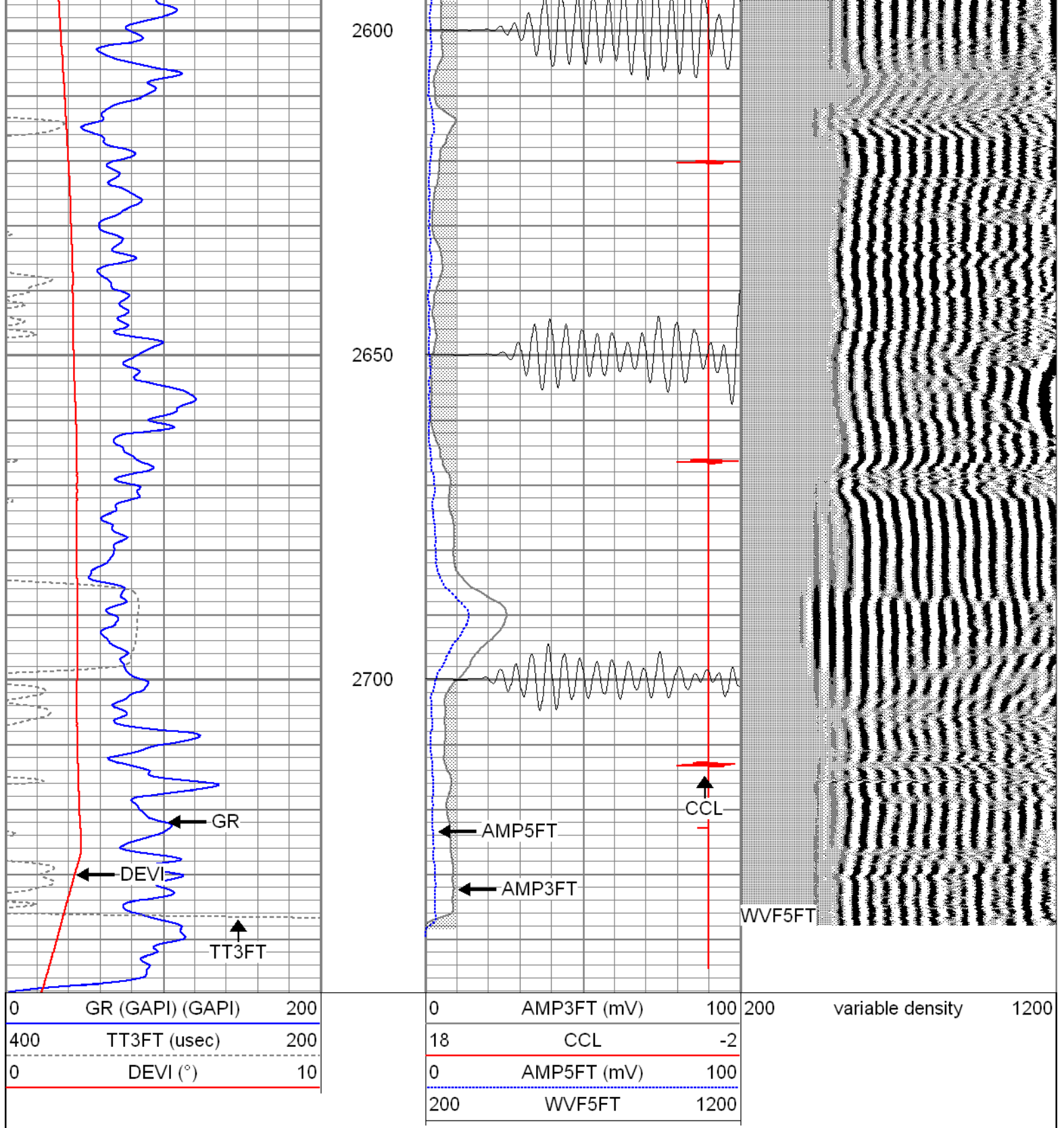
1900



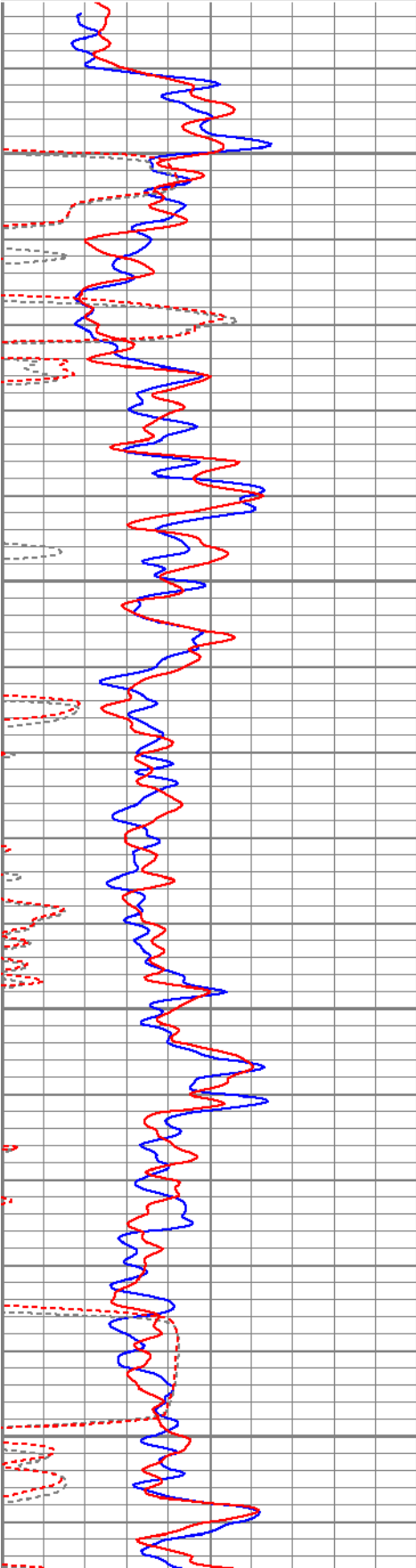




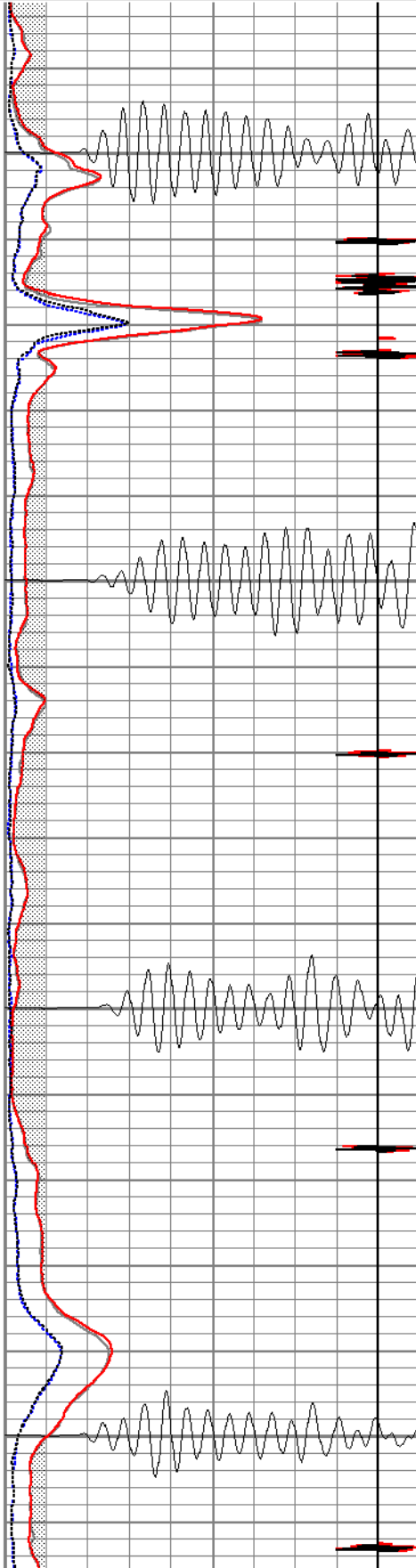




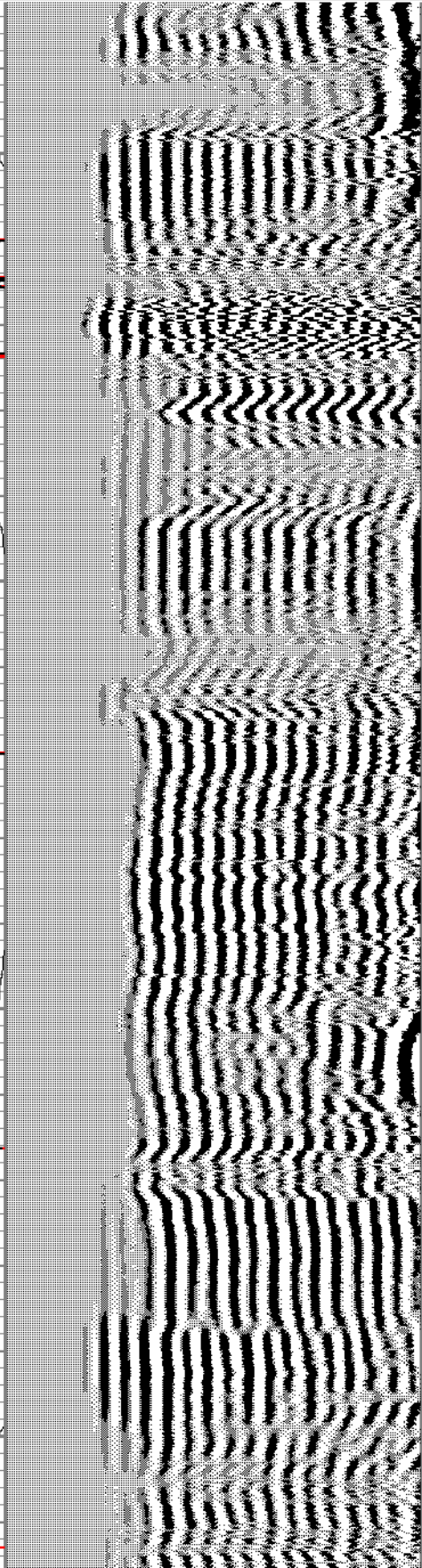
0	GR (GAPI) (GAPI)	200
400	TT3FT (usec)	200
0	GR (GAPI)-repeat (GAPI)	200
400	TT3FT-repeat (usec)	200

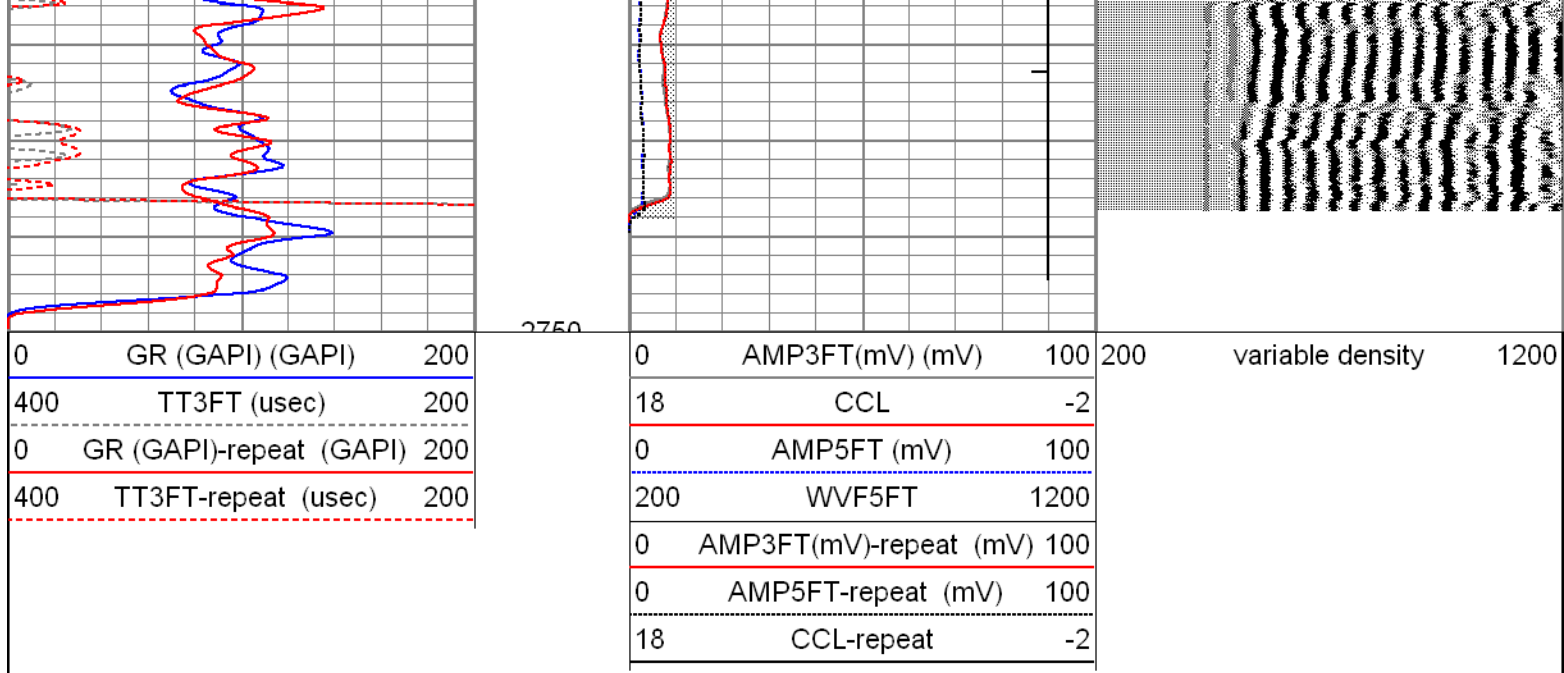


0	AMP3FT(mV) (mV)	100
18	CCL	-2
0	AMP5FT (mV)	100
200	WVF5FT	1200
0	AMP3FT(mV)-repeat (mV)	100
0	AMP5FT-repeat (mV)	100
18	CCL-repeat	-2



200	variable density	1200
-----	------------------	------





Calibration Report

Database File: lickitysplit122809b.db
 Dataset Pathname: pass1
 Dataset Creation: Mon Dec 28 16:41:17 2009 by Log Std Casedhole 09061

Gamma Ray Calibration Report

Serial Number: 275D_with_INC
 Tool Model: 275D_INC
 Performed: Tue Dec 22 15:42:44 2009

Calibrator Value: 200.0 GAPI

Background Reading: 0.0 cps
 Calibrator Reading: 200.0 cps

Sensitivity: 0.9950 GAPI/cps

Inclinometer Calibration Report

Performed: Fri Dec 11 13:10:24 2009

	Low Read.	High Read.	Low Ref.	High Ref.	
X Accelerometer	-3583.20	3593.60	-1.00	1.00	gee
Y Accelerometer	-3666.60	3525.20	-1.00	1.00	gee
Z Accelerometer					

Segmented Cement Bond Log Calibration Report

Serial Number: 80553
 Tool Model: Radii

Calibration Casing Diameter: 5.500 in
 Calibration Depth: 3134.413 ft

Master Calibration, performed Wed Dec 16 15:31:02 2009:

	Raw (v)		Calibrated (mv)		Results	
	Zero	Cal	Zero	Cal	Gain	Offset
3'	0.021	1.743	1.000	71.921	41.176	0.152
CAL	0.020	1.534				
5'	0.020	1.731	1.000	71.921	41.472	0.152
SUM						
S1	0.021	1.583	0.800	71.921	45.514	-0.146
S2	0.021	1.699	0.800	71.921	42.371	-0.083
S3	0.021	1.846	0.800	71.921	38.967	-0.012
S4	0.021	1.883	0.800	71.921	38.201	0.004
S5	0.021	1.833	0.800	71.921	39.237	-0.018
S6	0.021	1.773	0.800	71.921	40.596	-0.049
S7	0.021	1.670	0.800	71.921	43.128	-0.098
S8	0.021	1.554	0.800	71.921	46.375	-0.160