



COMPENSATED DENSITY LOG

Company	Pioneer Natural Resources	Company	Pioneer Natural Resources
Well	Brahms 12-24	Well	Brahms 12-24
Field	Purgatorie River	Field	Purgatorie River
County	Las Animas	County	Las Animas
State	CO	State	CO
Location:	2329' FNL & 735' FWL	API # : 071 09703 00	Other Services SIL
Permanent Datum	SEC 24 TWP 33S RGE 67W		
Log Measured From	Ground Level	Elevation	7434'
Drilling Measured From	Kelly Bushing 4' Above G.L.	K.B. 7438'	
	Kelly Bushing	D.F. -----	
		G.L. 7434'	
Date	12/7/09		
Run Number	one		
Depth Driller	2270'		
Depth Logger	2258'		
Bottom Logged Interval	2256'		
Top Log Interval	850'		
Casing Driller	880'		
Casing Logger	879'		
Bit Size	7 7/8"		
Type Fluid in Hole	dry		
Density / Viscosity	///		
pH / Fluid Loss	///		
Source of Sample	///		
Rm @ Meas. Temp	///		
Rmf @ Meas. Temp	///		
Rmc @ Meas. Temp	///		
Source of Rmf / Rmc	///		
Rm @ BHT	///		
Time Circulation Stopped	2:30 a.m.		
Time Logger on Bottom	7:00		
Maximum Recorded Temperature	///		
Equipment Number	697		
Location	Trinidad		
Recorded By	Worley		
Witnessed By	Mr. Berry		

<<< Fold Here >>>

All interpretations are opinions based on inferences from electrical or other measurements and we cannot and do not guarantee the accuracy or correctness of any interpretation, and we shall not, except in the case of gross or willful negligence on our part, be liable or responsible for any loss, costs, damages, or expenses incurred or sustained by anyone resulting from any interpretation made by any of our officers, agents or employees. These interpretations are also subject to our general terms and conditions set out in our current Price Schedule.

Comments

Wet Canyon, second right off black top, stay on main road, drive thru the Stage Coach, stay on main road up hill, drive thru the Cheryl, at Y go right, take second left to location.

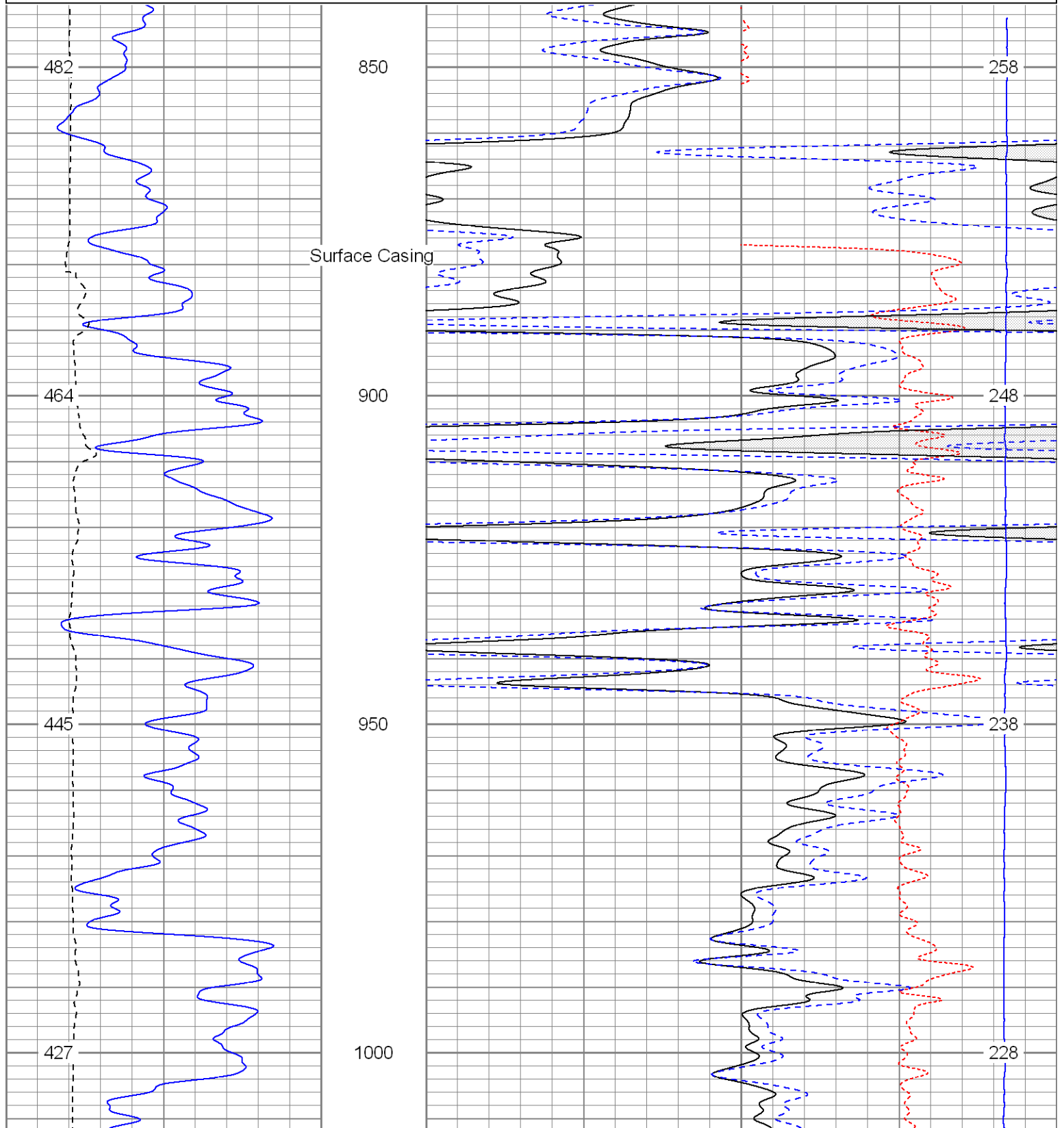
Well was dry.

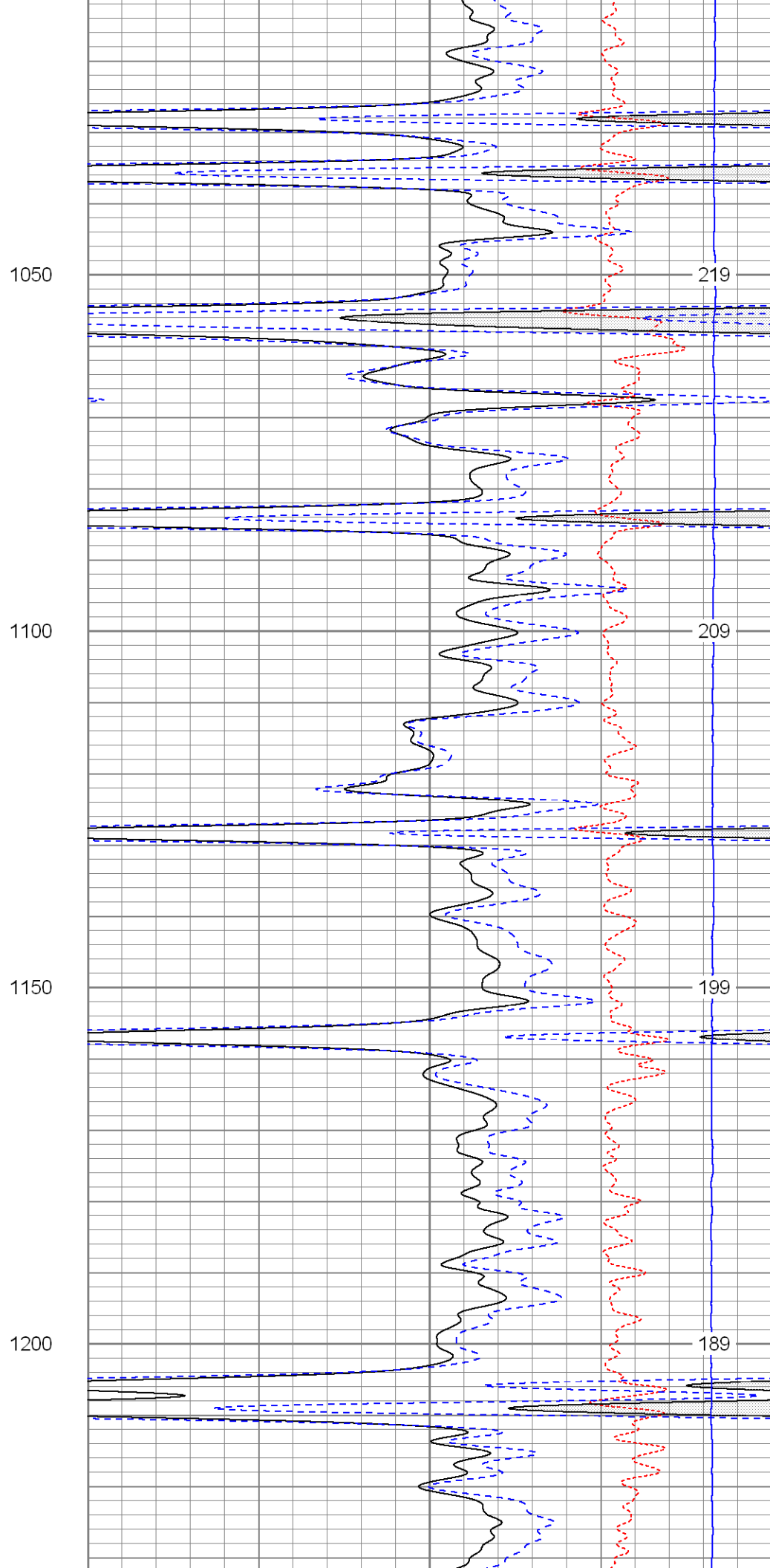
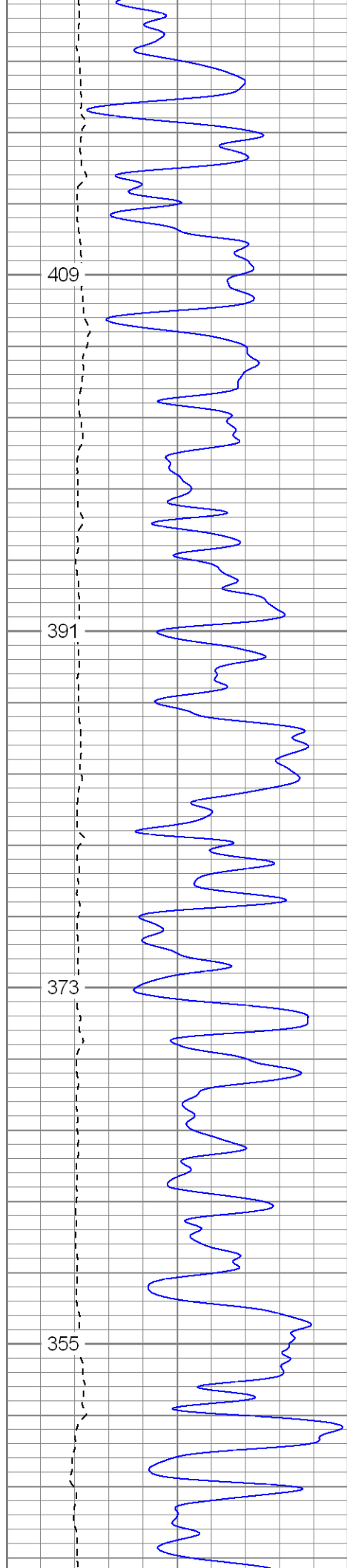


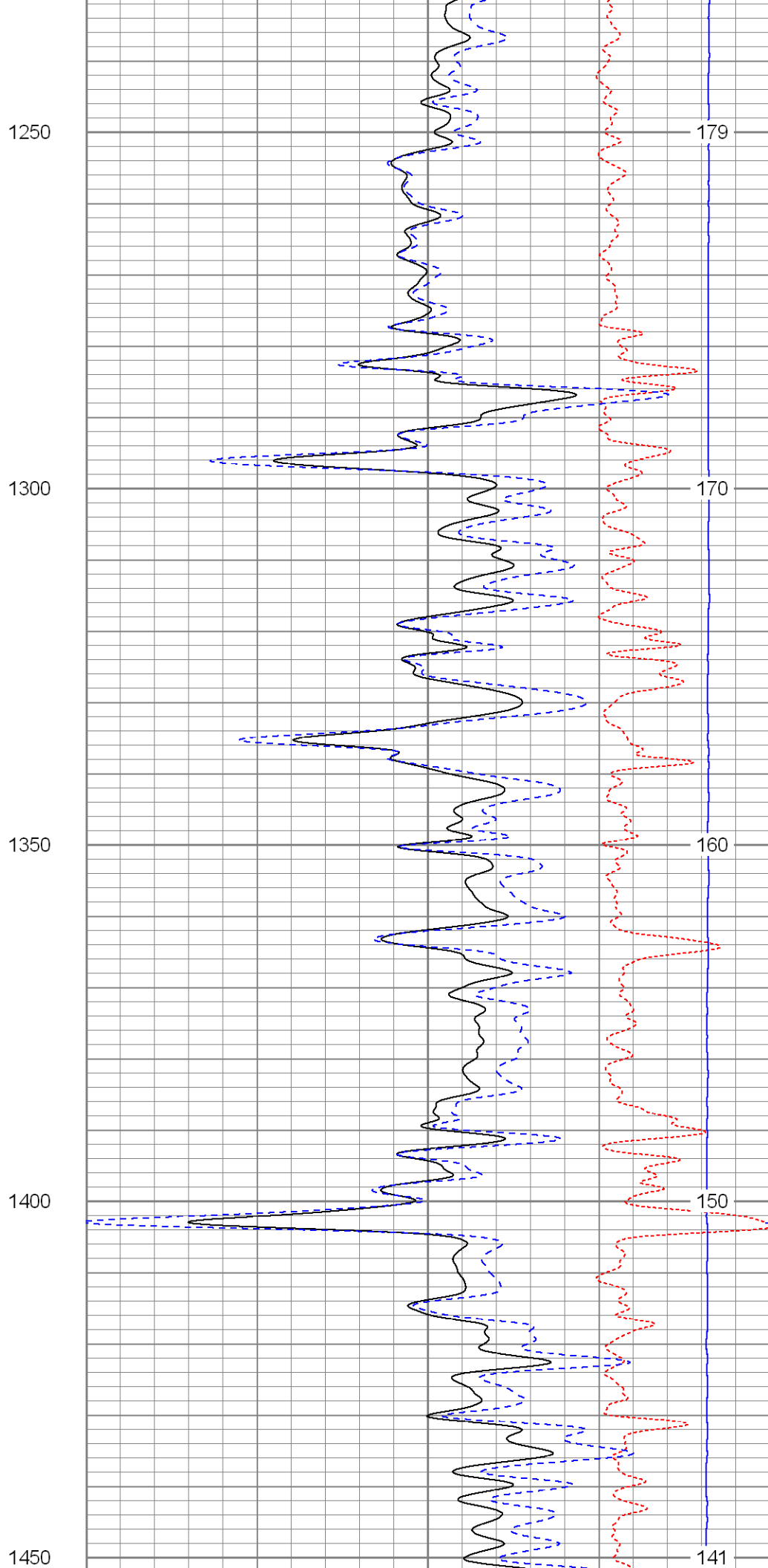
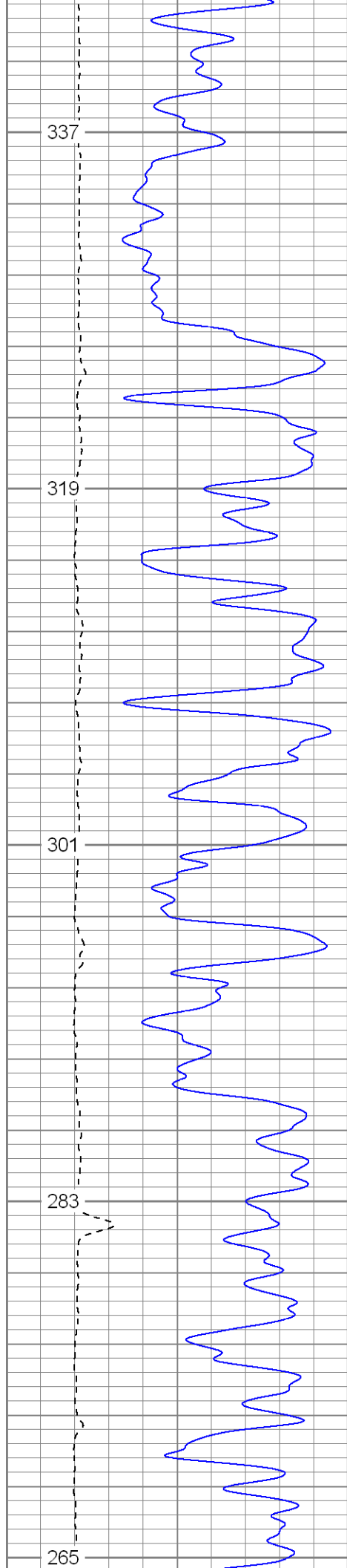
Main Pass

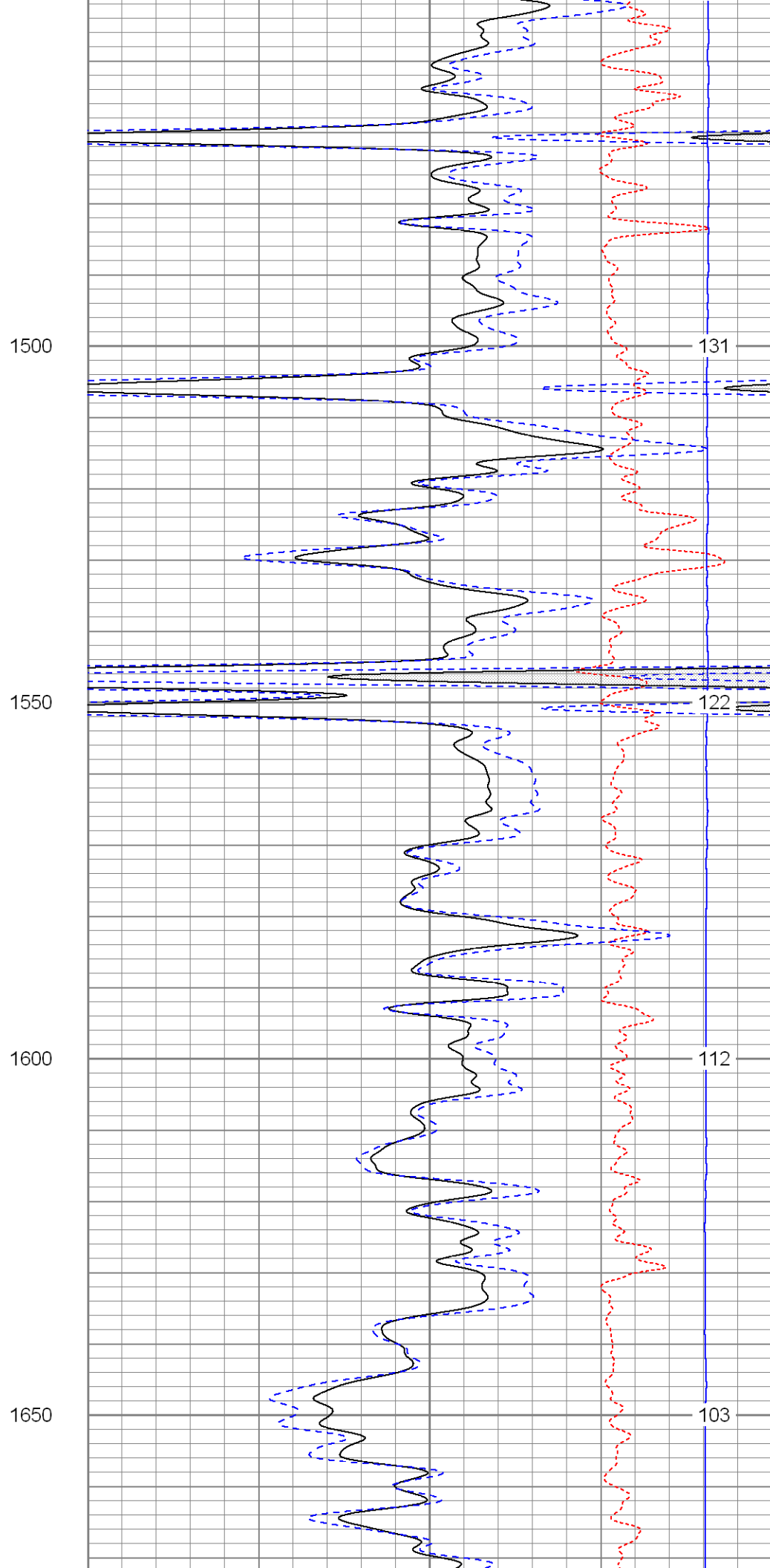
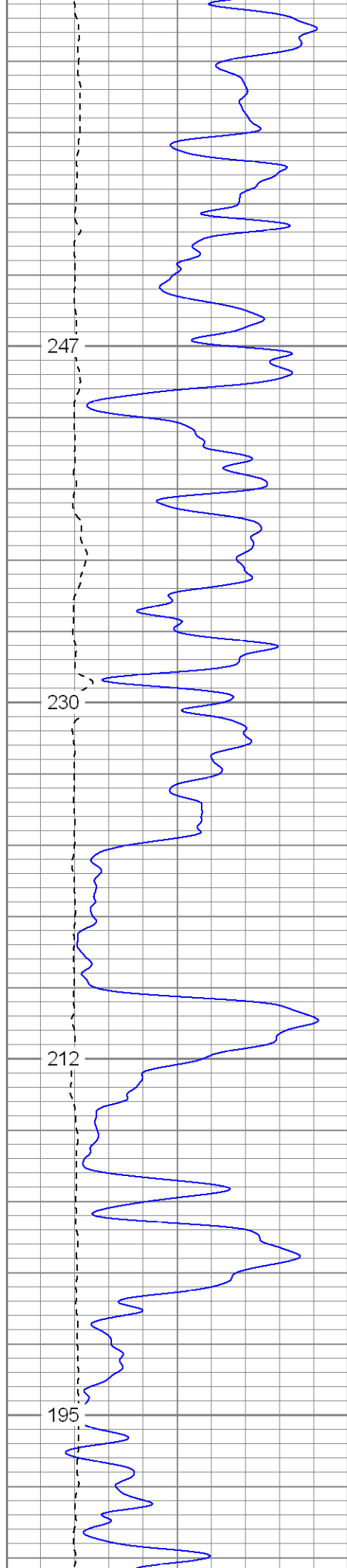
Database File: brahmsdi.db
Dataset Pathname: pass2.2
Presentation Format: cdl
Dataset Creation: Mon Dec 07 10:38:58 2009 by Calc Open-Cased 071220
Charted by: Depth in Feet scaled 1:240

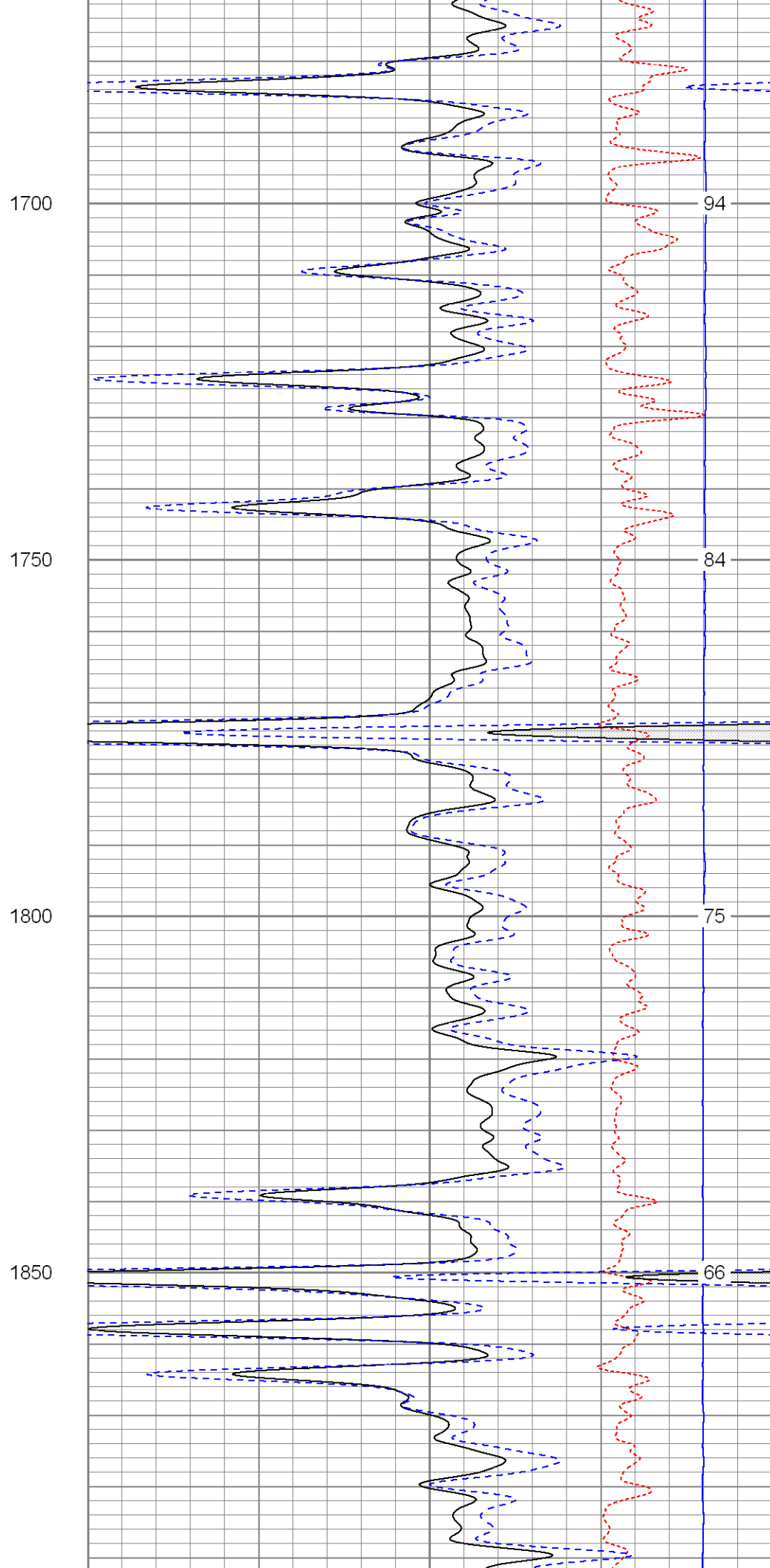
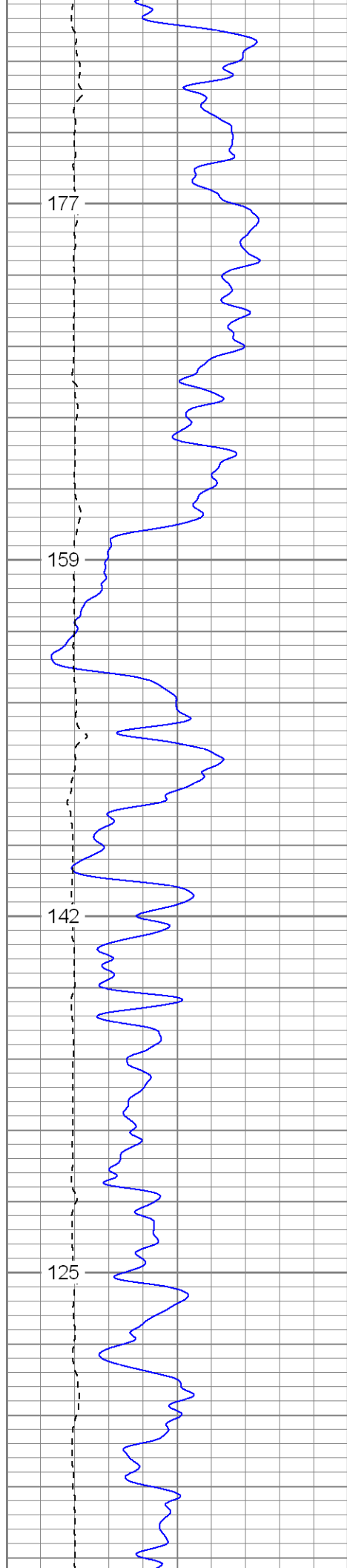
0	GR (GAPI)	200	2	RHOB (g/cc)	3
6	DCAL (in)	16	1	RHOB (g/cc)	2
TBHV (ft3)			30	DPOR (pu)	-10
			-0.5 RHOC (g/cc) 0.5		
			7000 LTEN (lb) 0		
			ABHV (ft3)		

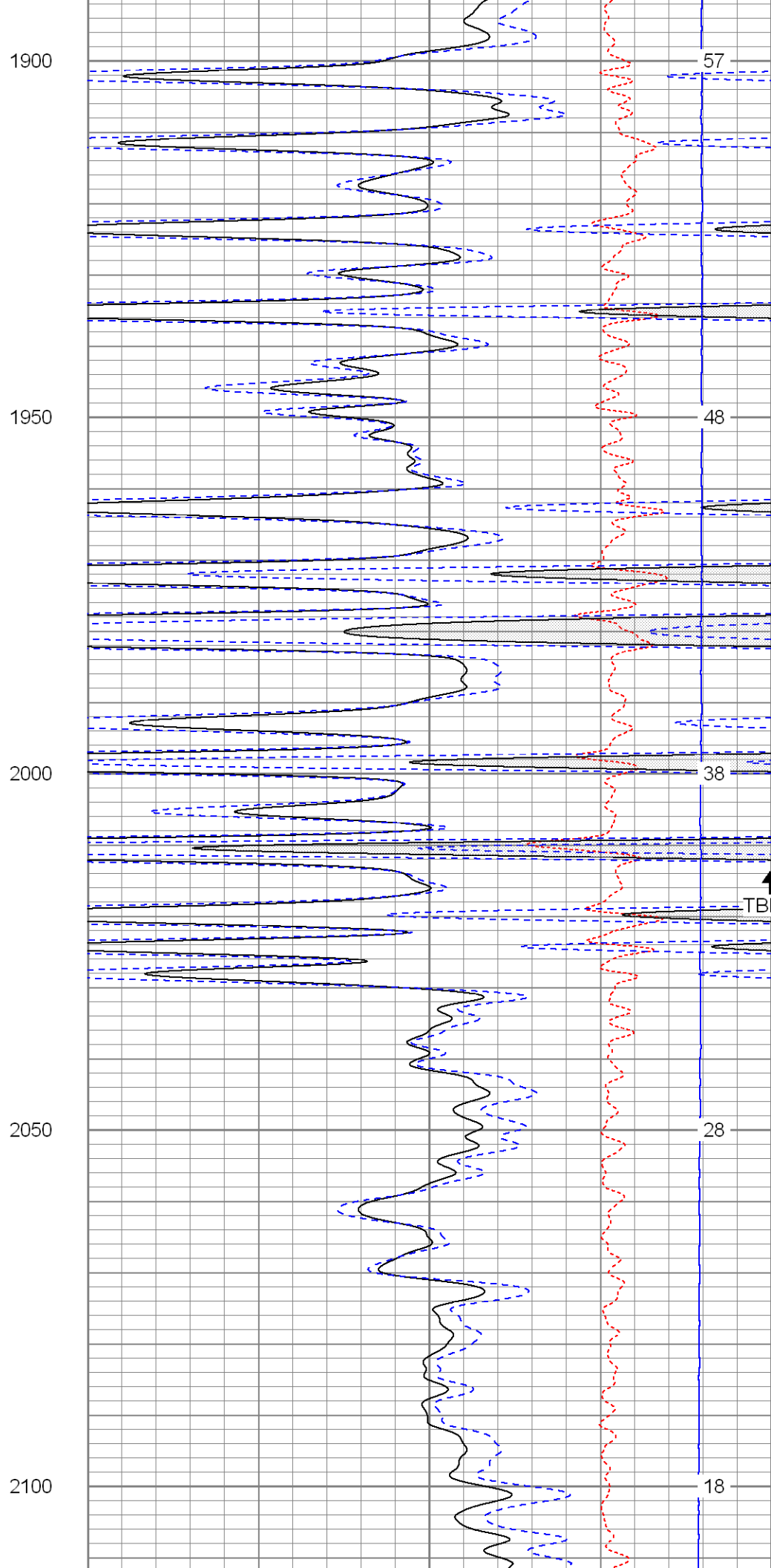
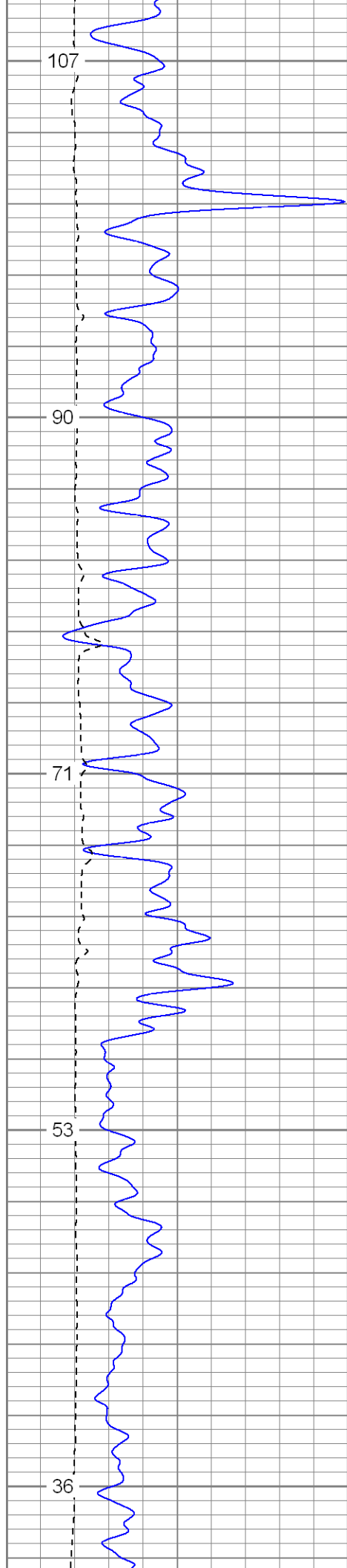


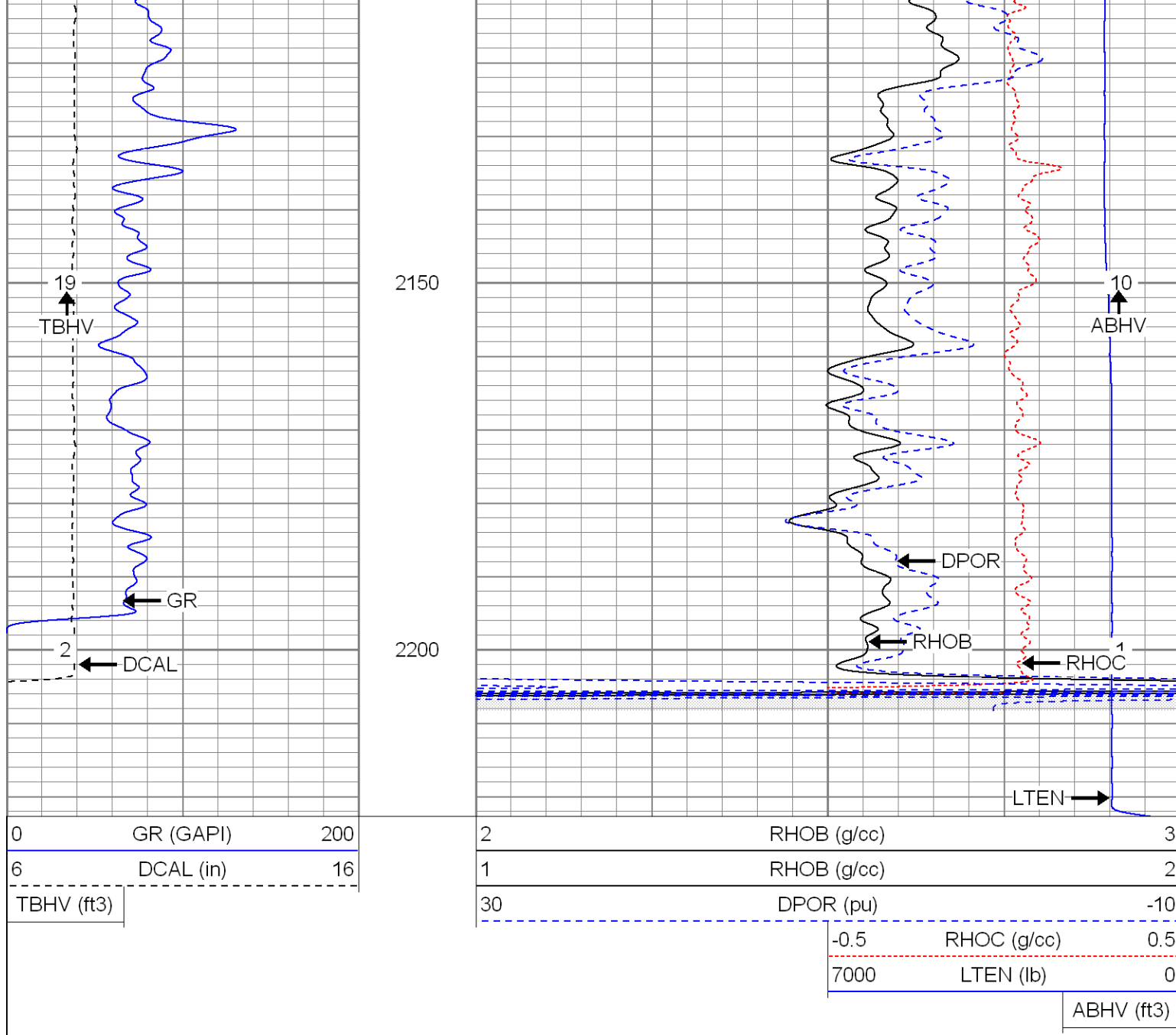








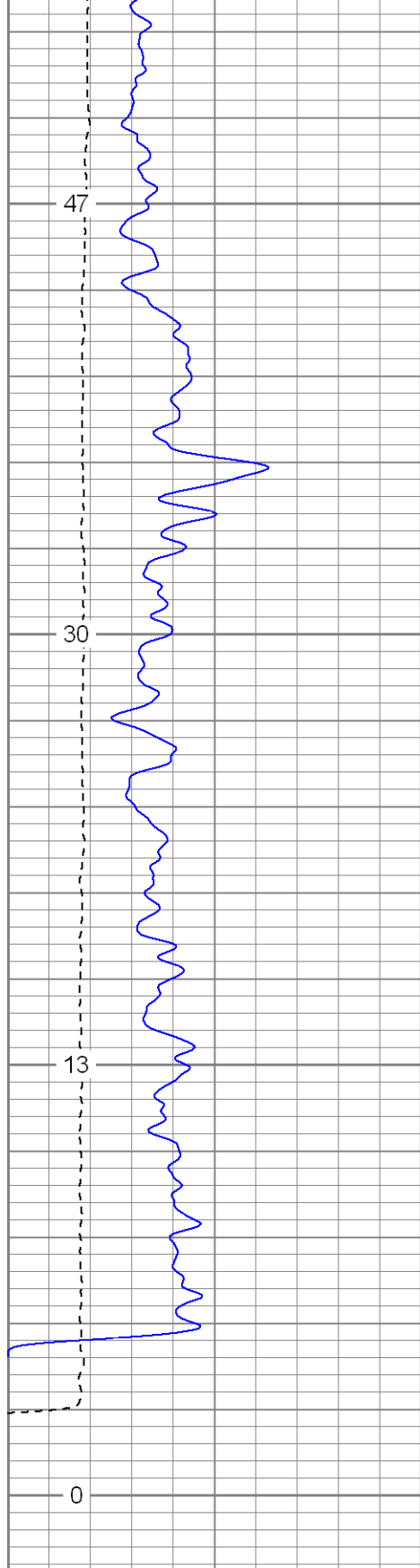




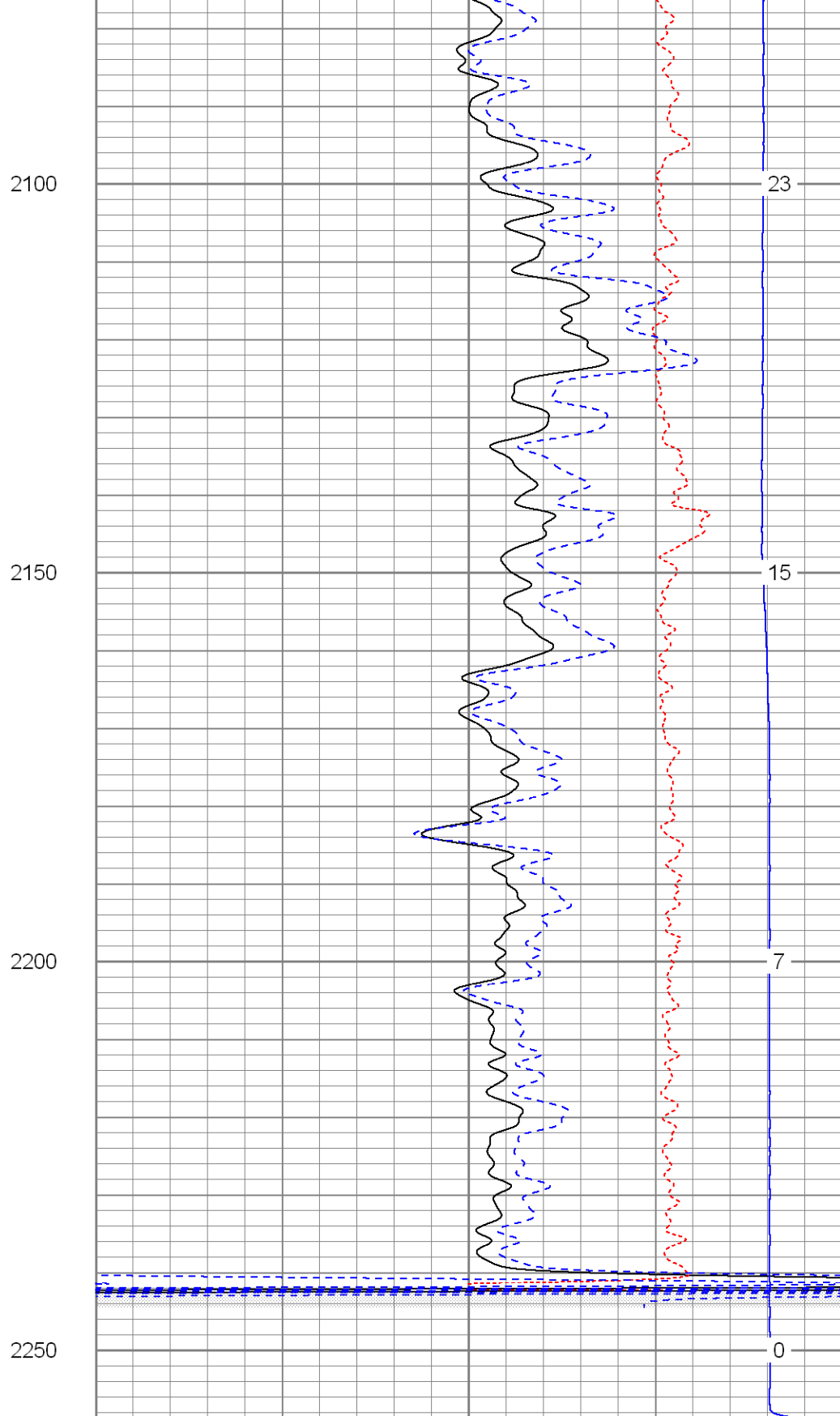
Repeat Section

Database File: brahmsdi.db
 Dataset Pathname: pass1.2
 Presentation Format: cdl
 Dataset Creation: Mon Dec 07 10:48:39 2009 by Calc Open-Cased 071220
 Charted by: Depth in Feet scaled 1:240

0	GR (GAPI)	200	2	RHOB (g/cc)	3
6	DCAL (in)	16	1	RHOB (g/cc)	2
TBHV (ft3)			30	DPOR (pu)	-10
			-0.5	RHOC (g/cc)	0.5
			7000	LTEN (lb)	0
			ABHV (ft3)		



0	GR (GAPI)	200
6	DCAL (in)	16
TBHV (ft3)		



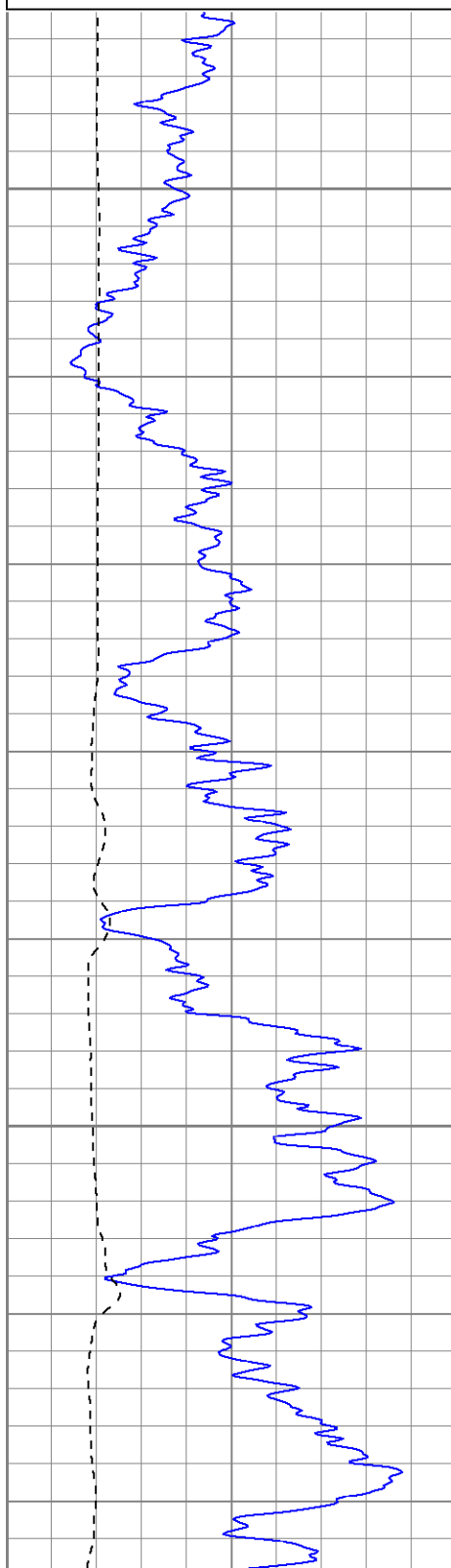
2	RHOB (g/cc)	3
1	RHOB (g/cc)	2
30	DPOR (pu)	-10
-0.5	RHOC (g/cc)	0.5
7000	LTEN (lb)	0
ABHV (ft3)		

High Resolution Pass

Database File: brahmsdi.db
 Dataset Pathname: pass2.2hr
 Presentation Format: cdlhr
 Dataset Creation: Mon Dec 07 10:51:35 2009 by Calc Open-Cased 071220
 Charted by: Depth in Feet scaled 1:120

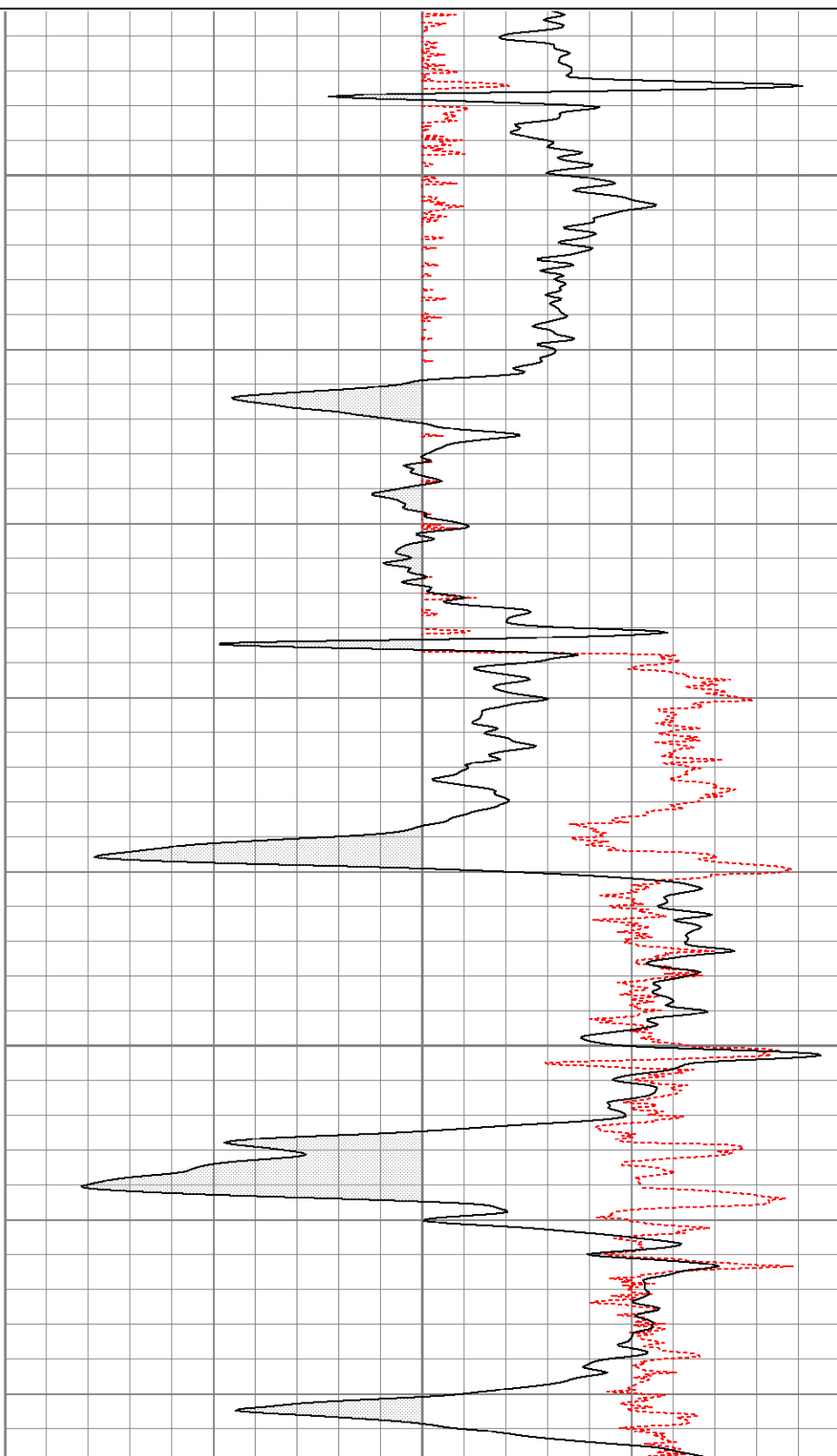
0	GR (GAPI)	200
6	DCAL (in)	16

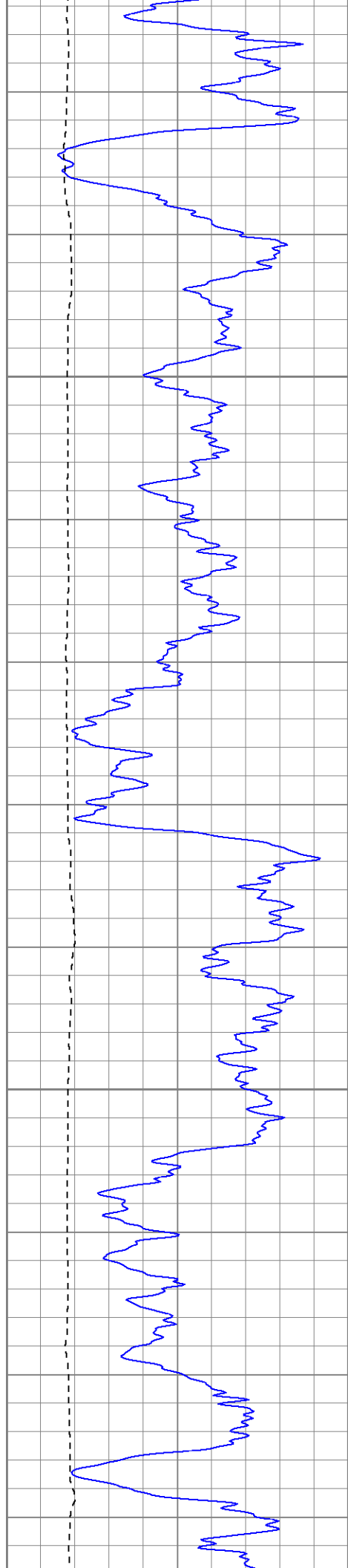
1	RHOB (g/cc)	3
-0.5	RHOC (g/cc)	0.5



850

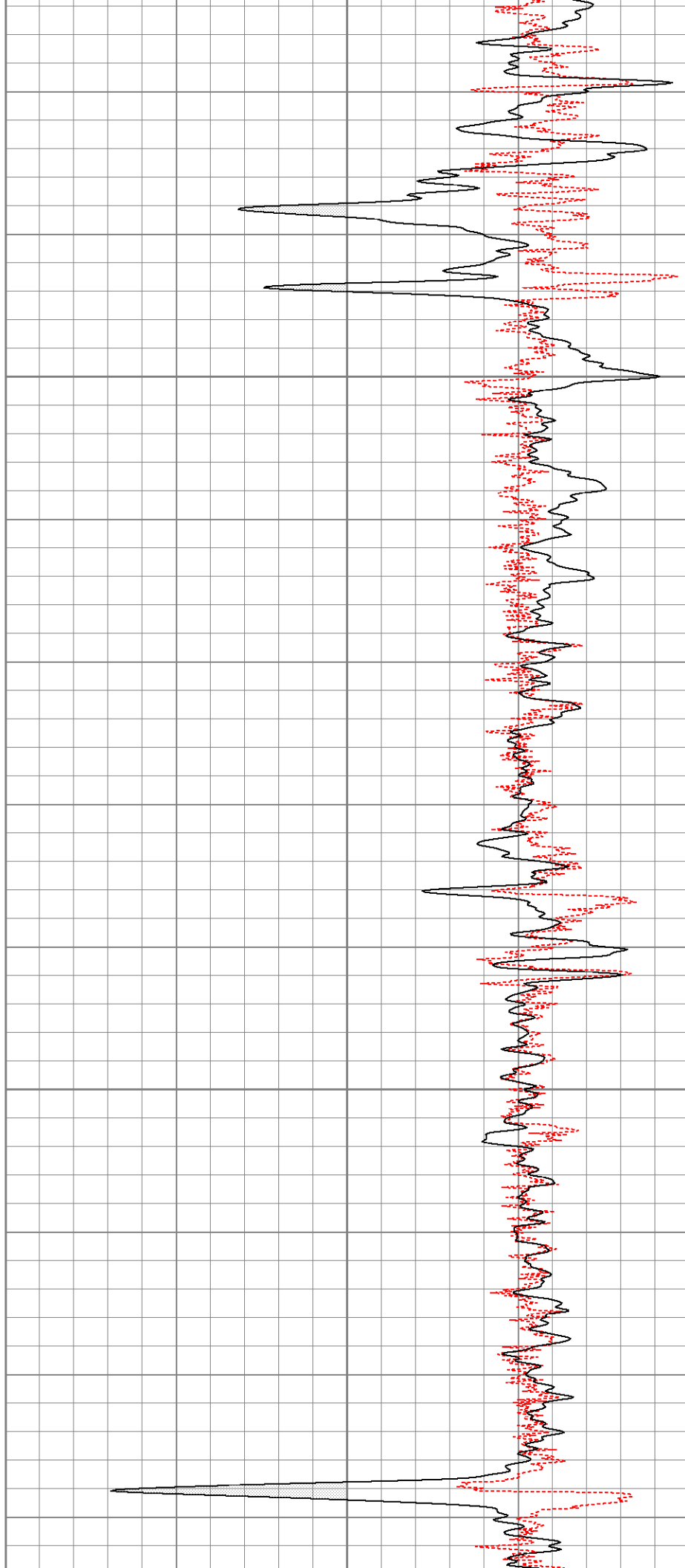
900

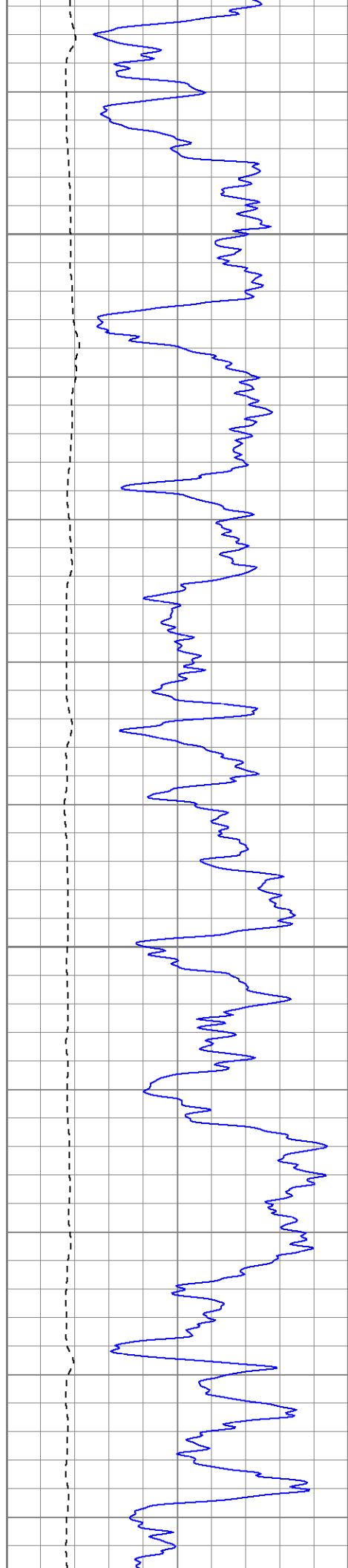




950

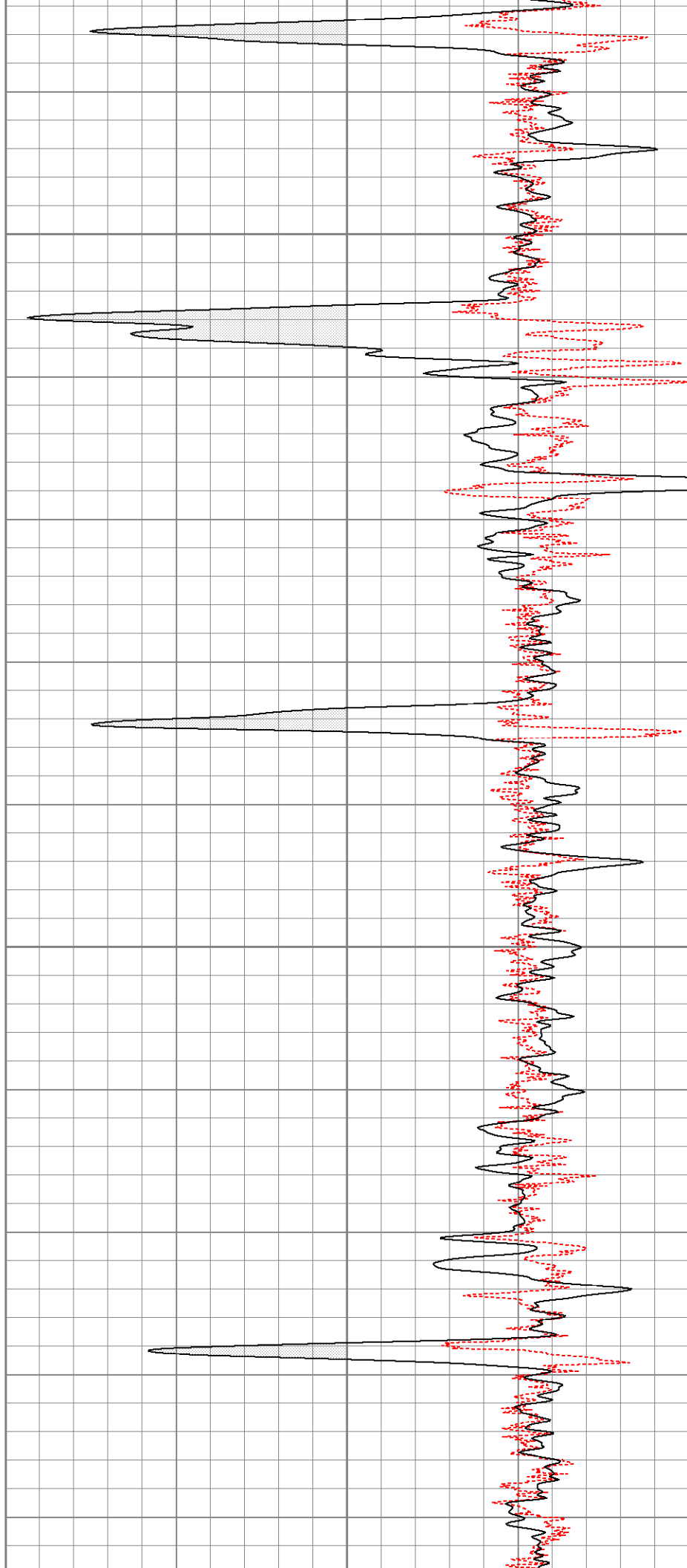
1000

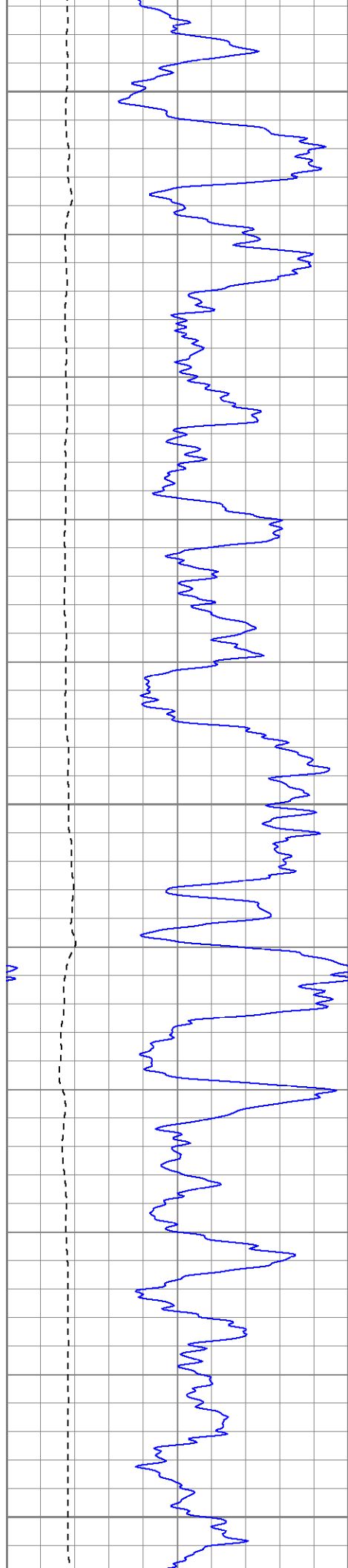




1050

1100

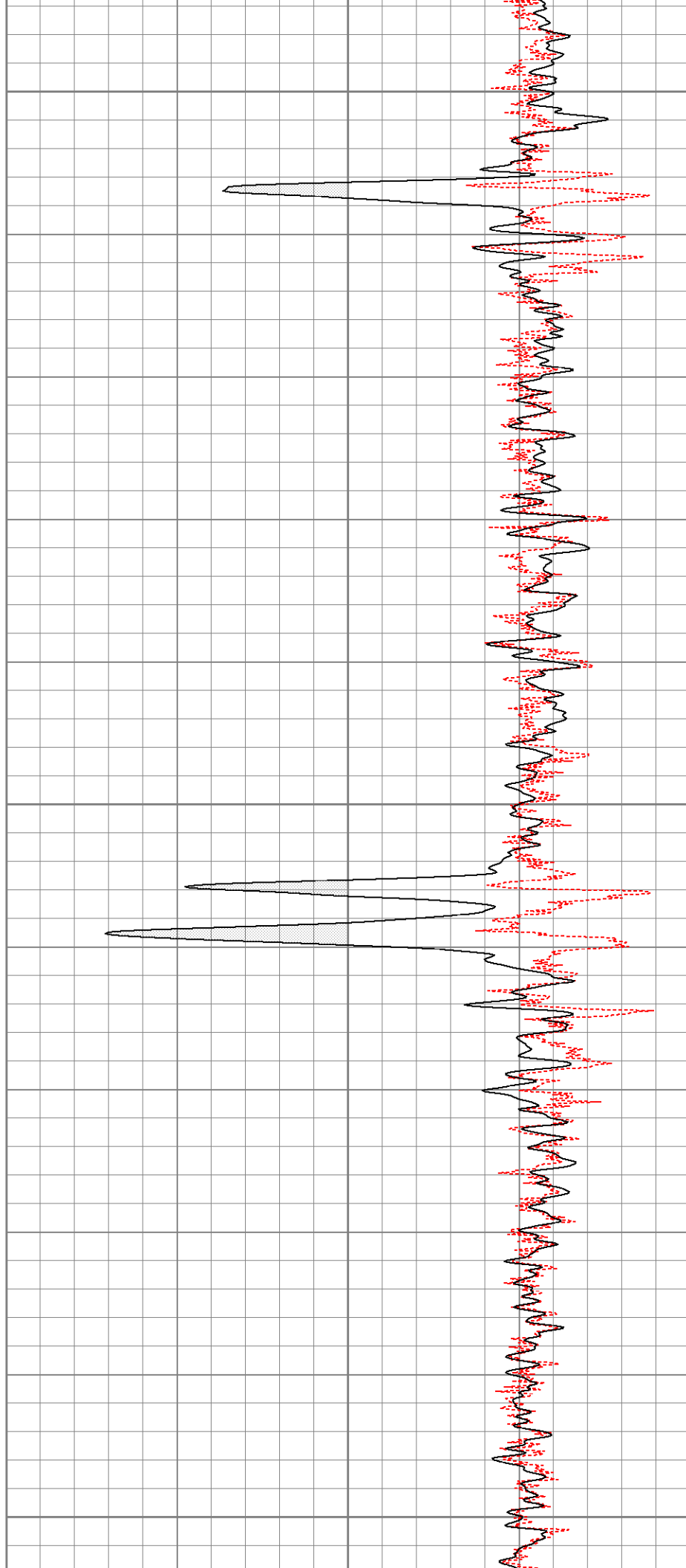


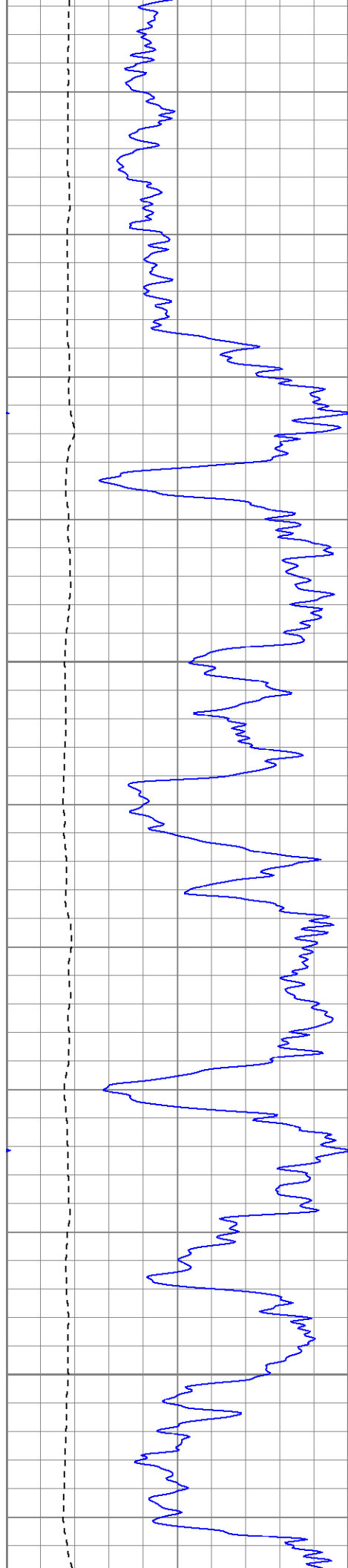


1150

1200

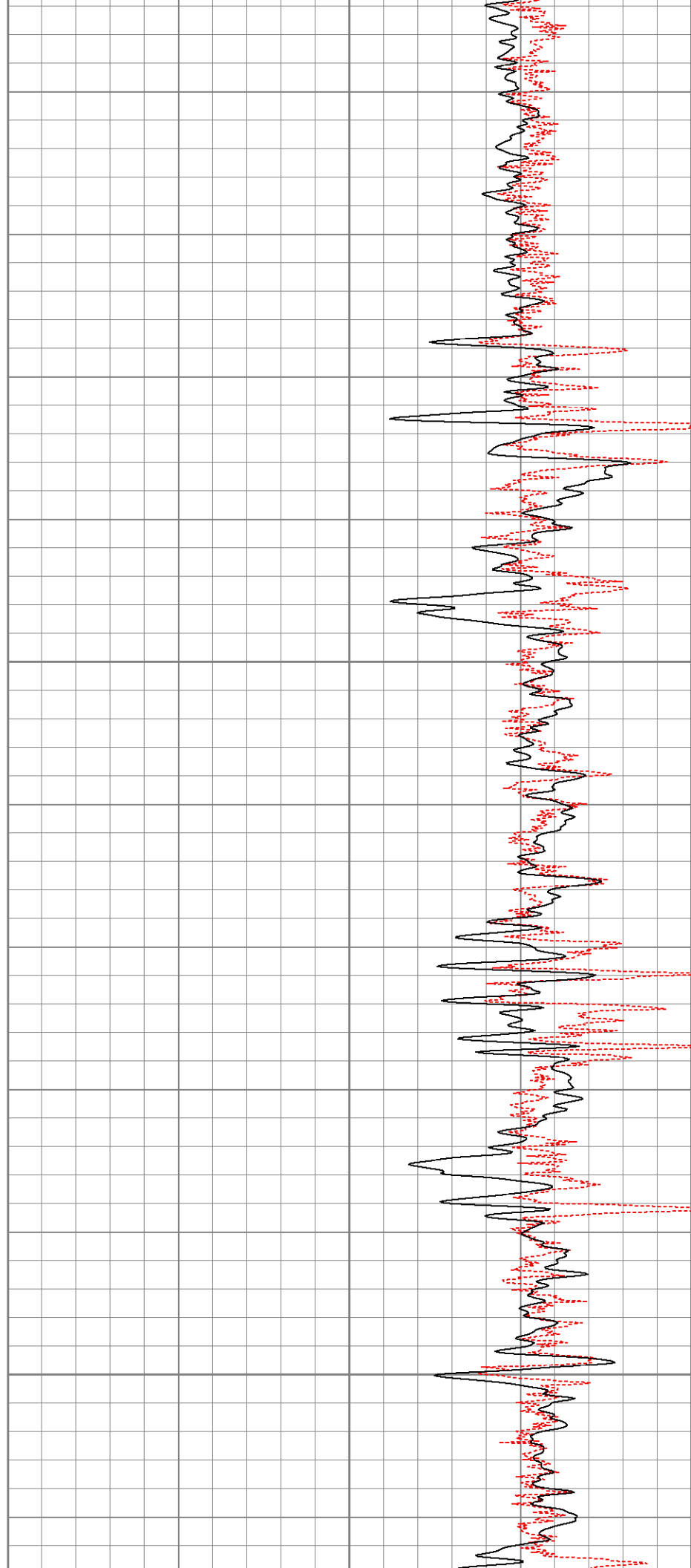
1250

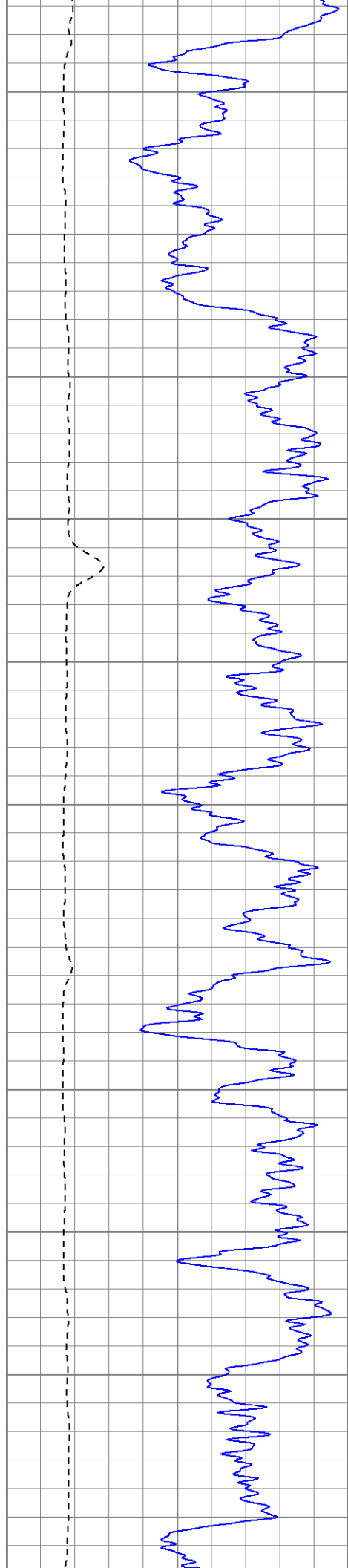




1300

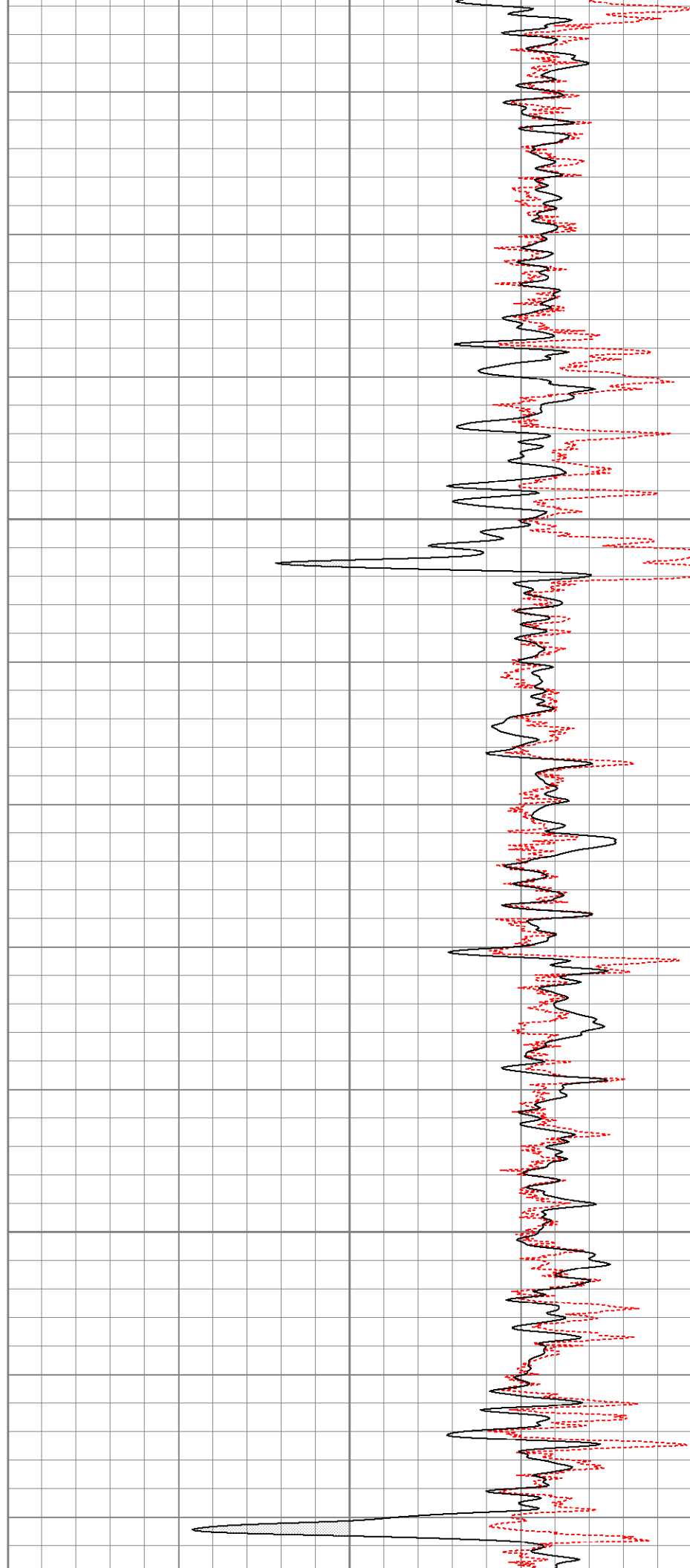
1350

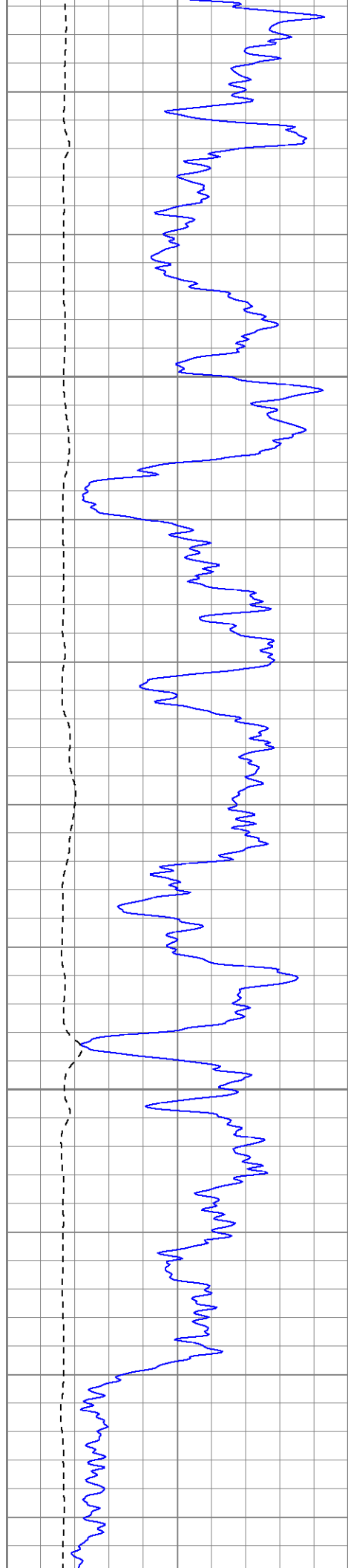




1400

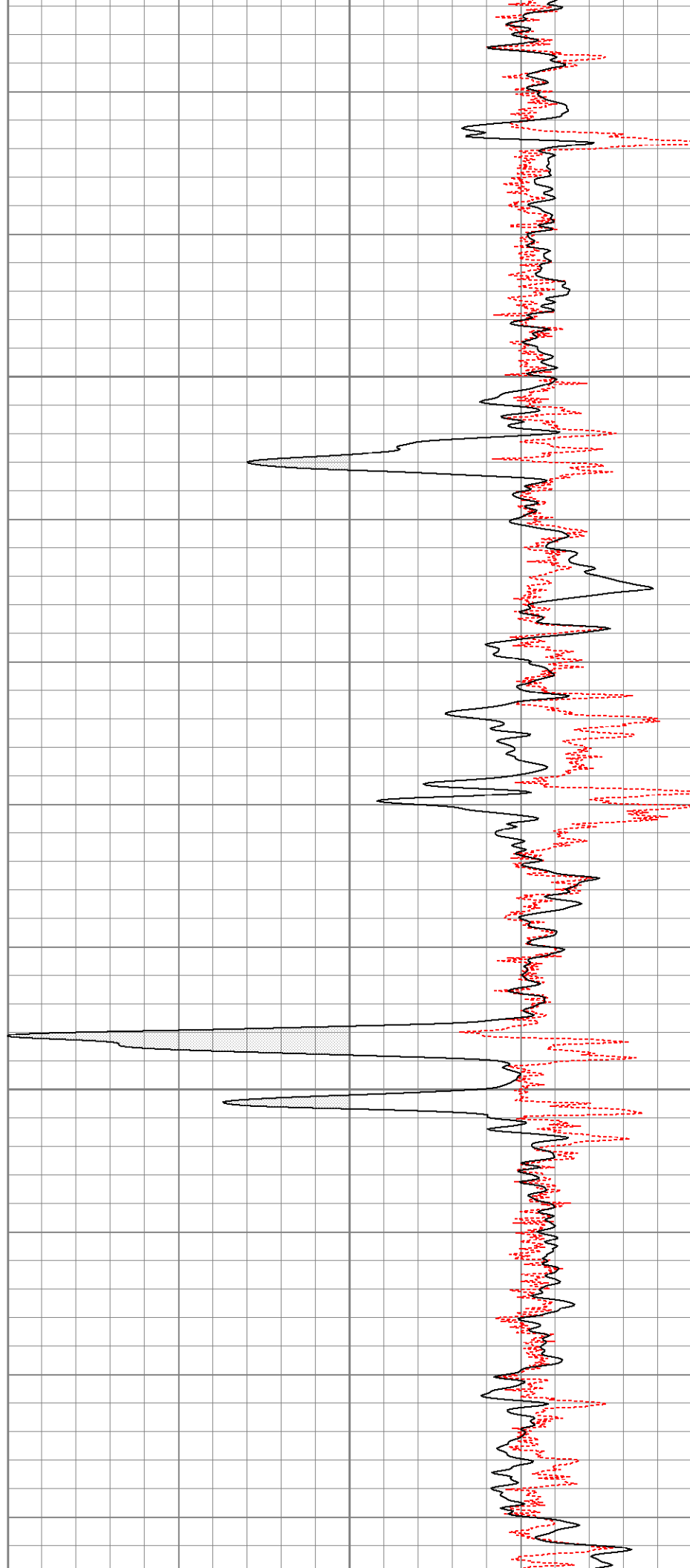
1450

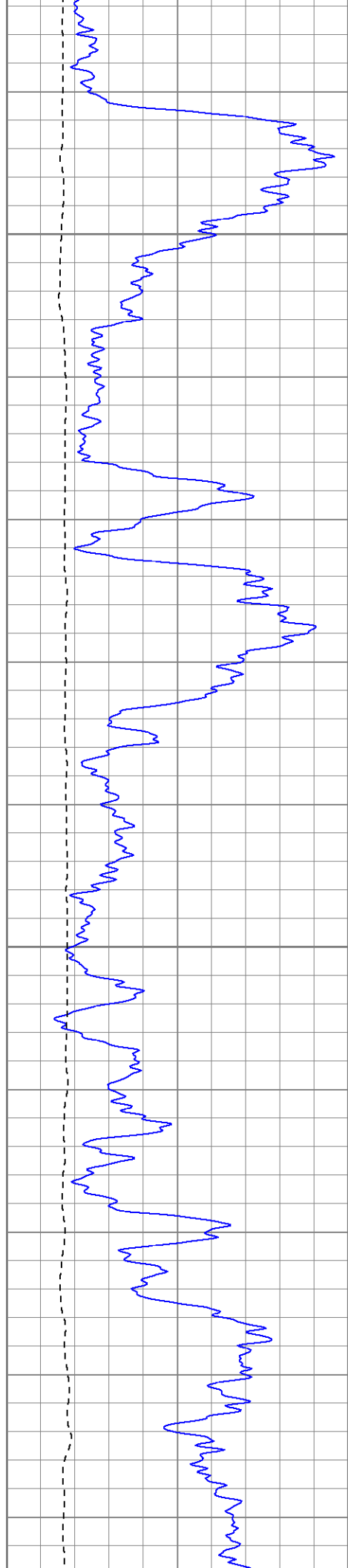




1500

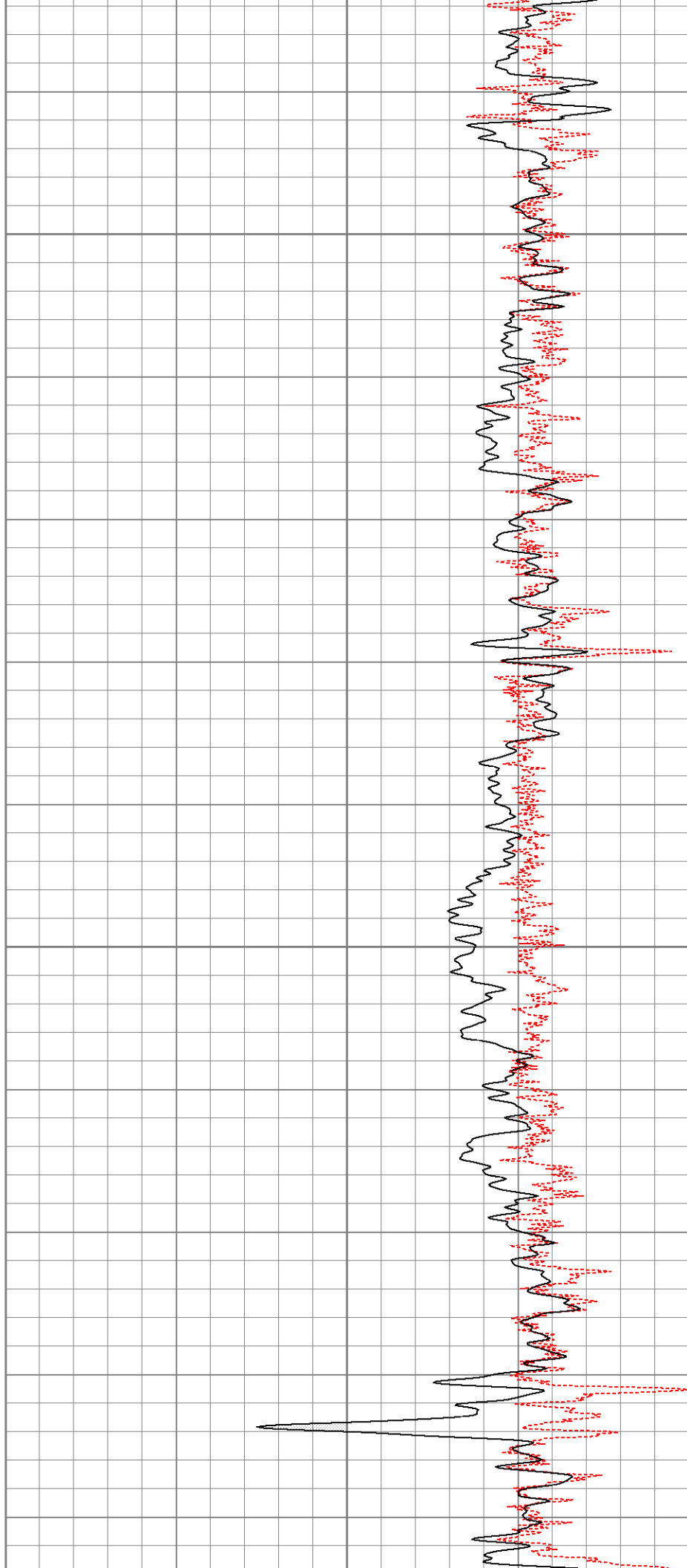
1550

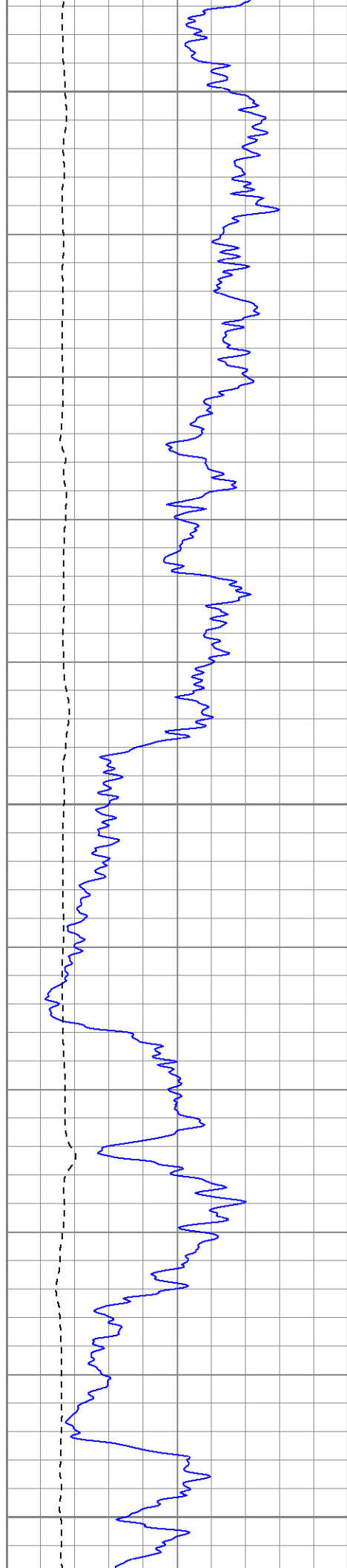




1600

1650

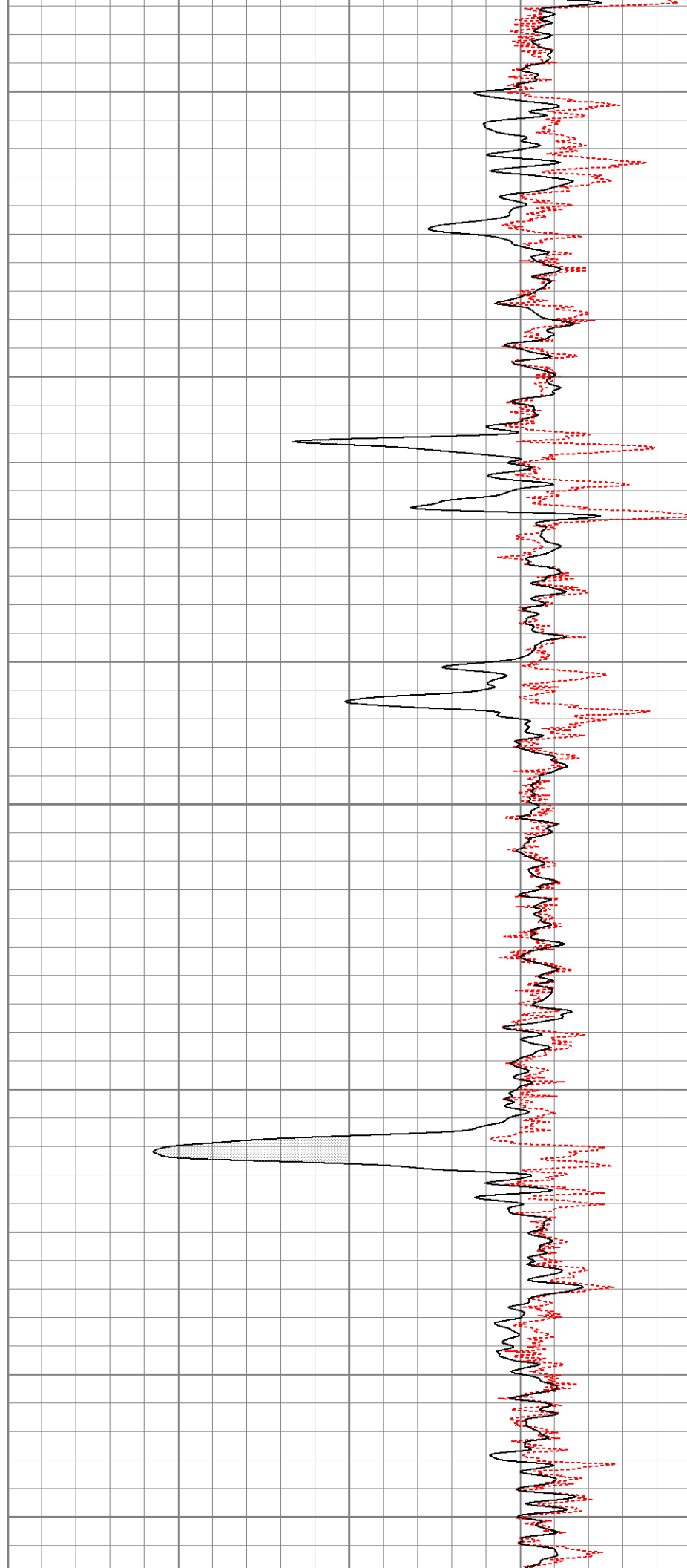


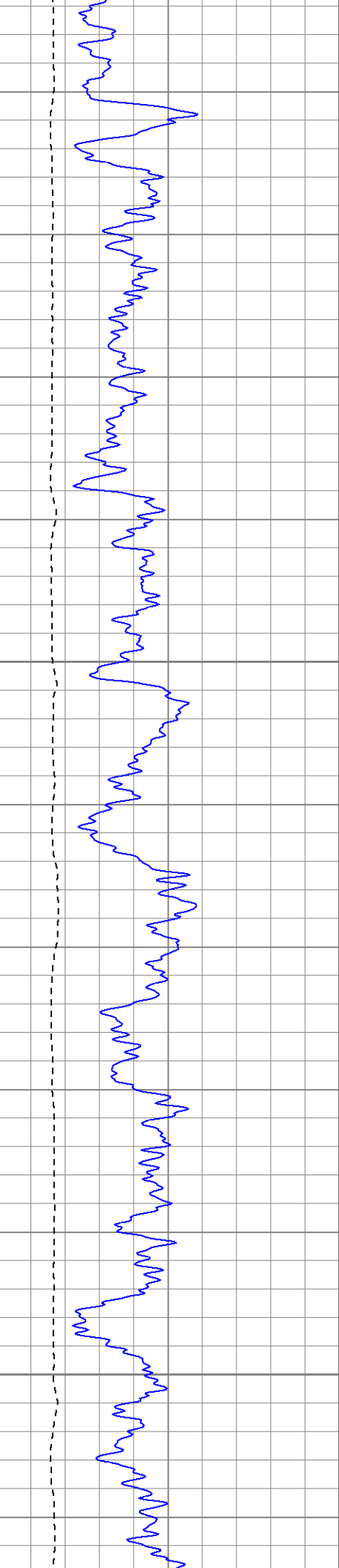


1700

1750

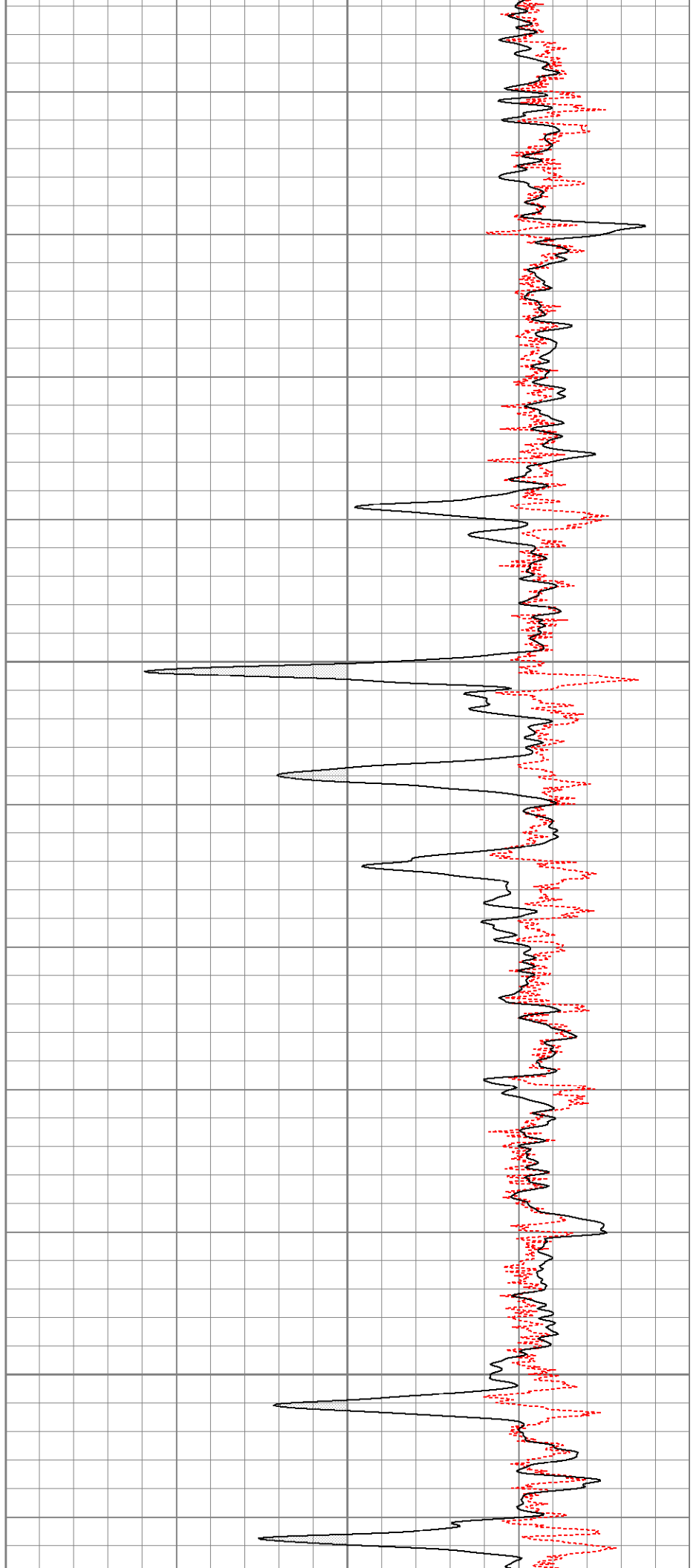
1800

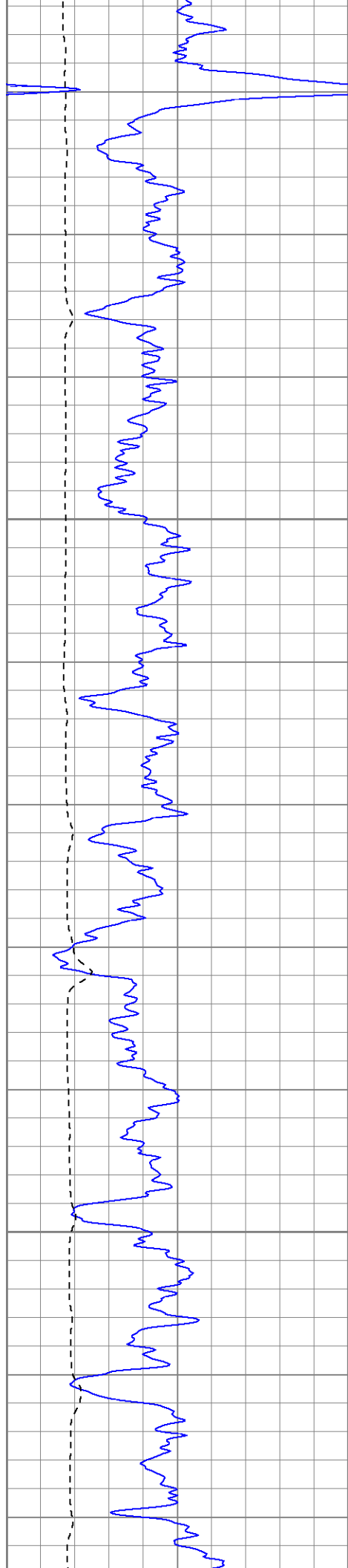




1850

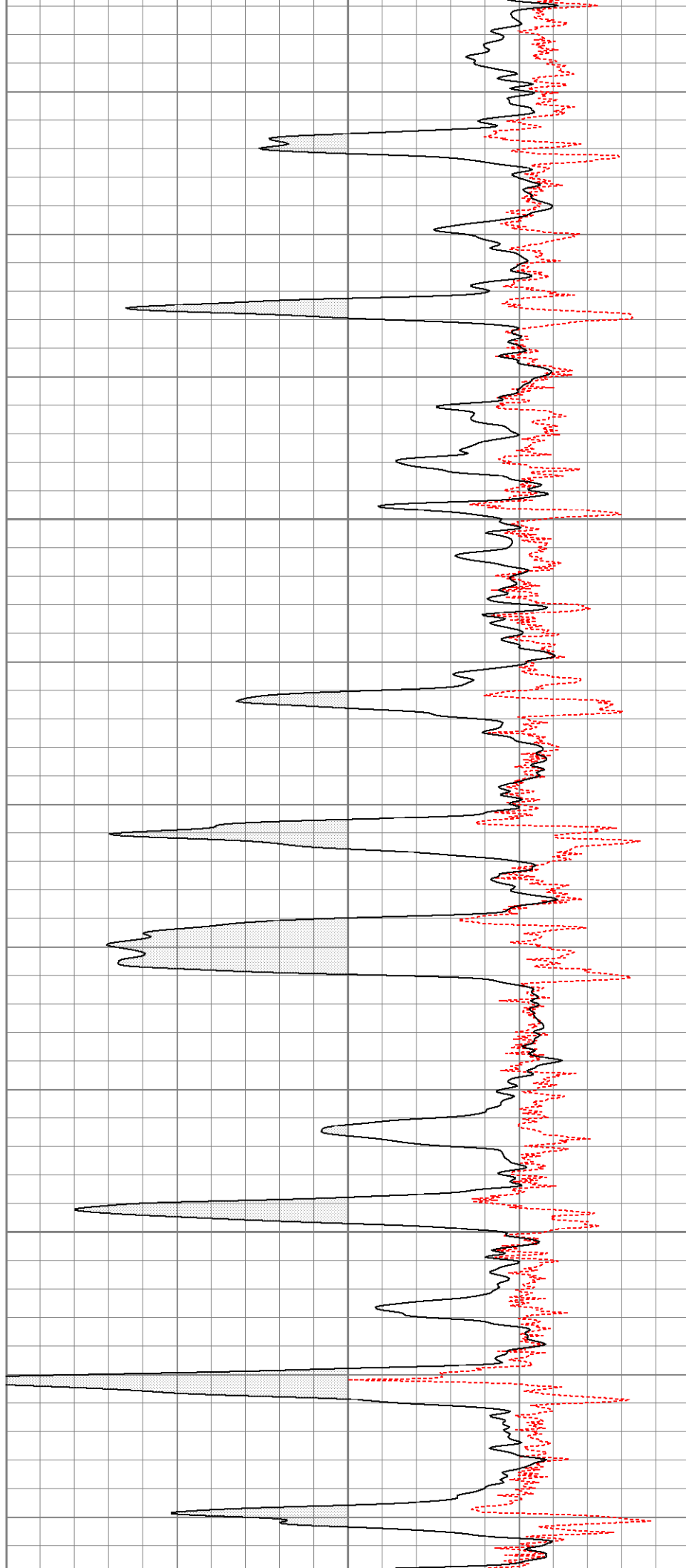
1900





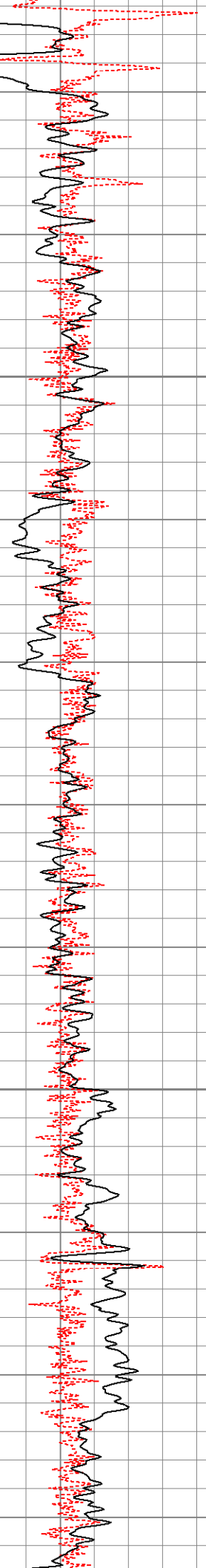
1950

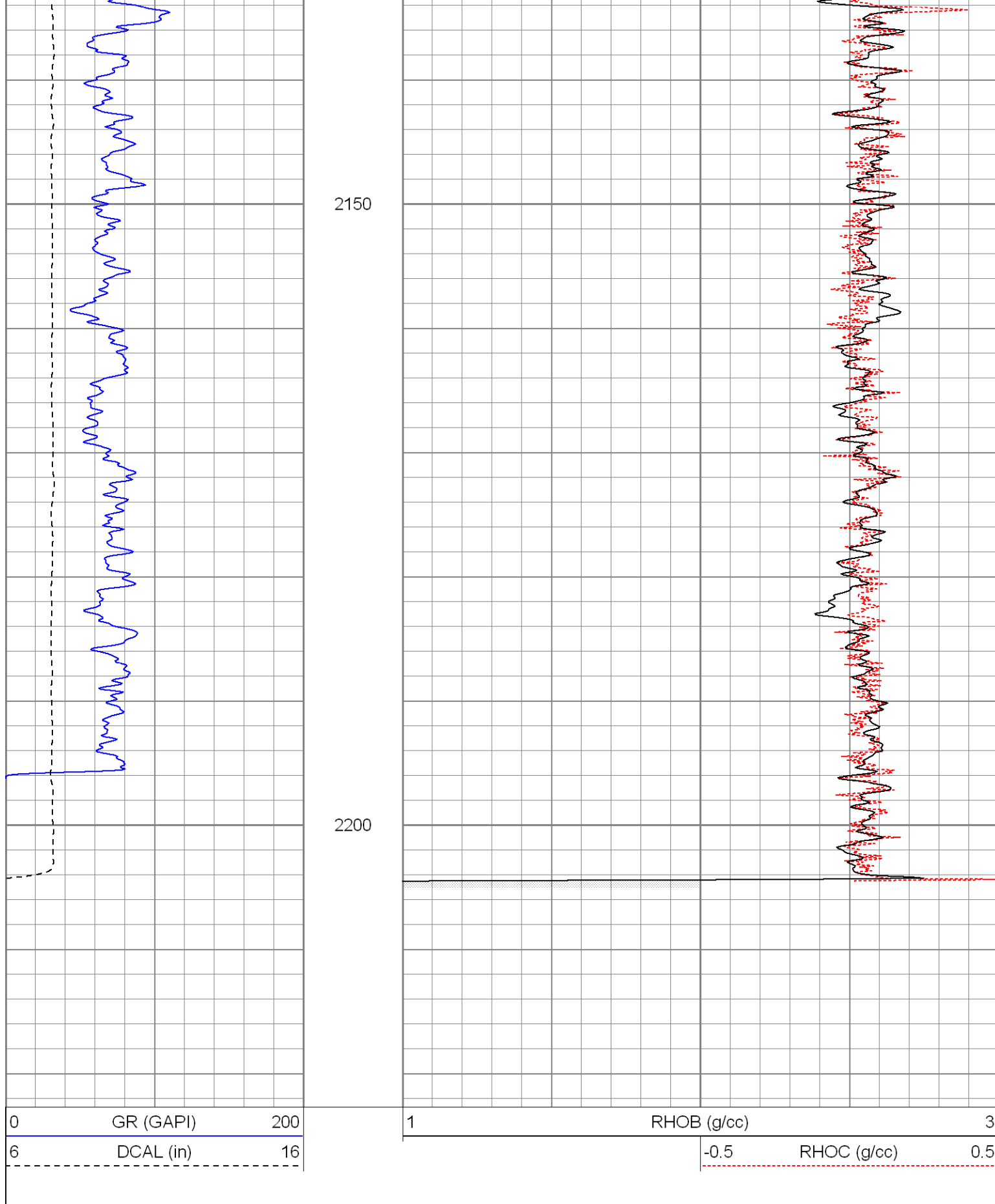
2000



2050

2100





Calibration Report

Database File: brahmsdi.db
Dataset Pathname: pass2
Dataset Creation: Mon Dec 07 06:52:41 2009 by Log Open-Cased 071220


Serial Number:	121		
Tool Model:	GL121		
Downhole Cal Performed:	Mon Dec 07 06:31:58 2009		
Surface Cal Performed:	Fri Dec 04 08:51:07 2009		
After Survey Verification Performed:			
Surface Calibration:	Air	Loop	
Conductivity Reference:	0.000	450.000	mmho
Conductivity Reading:	0.005	0.626	V
Internal Reference:	Zero	Cal	
Conductivity Reference:	0.000	500.000	mmho
Conductivity Reading:	0.009	0.631	V
Downhole Calibration:	Internal Zero	Internal Cal	
Conductivity Reference:	3.282	453.999	mmho
Conductivity Reading:	-1.663	456.644	V
Short Normal Reference:	0.000	17.000	Ohm-m
Short Normal Reading:	0.016	0.201	V
Results:	Gain	Offset	
Loop Conductivity:	724.756	-3.402	
Downhole Correction:	0.983	4.918	
Short Normal Resistivity:	91.790	-1.449	

Compensated Density Calibration Report

Serial-Model:	2501DHT-DHT				
Source / Verifier:	/				
Master Calibration Performed:	Fri Dec 04 08:50:44 2009				
Master Calibration					
	Density		Far Detector	Near Detector	
Magnesium	1.710	g/cc	767.26	303.43	cps
Aluminum	2.590	g/cc	171.91	210.81	cps
Spine Angle = 76.32			Density/Spine Ratio = 0.572		
	Size		Reading		
Small Ring	8.00	in	6196.63		
Large Ring	14.00	in	10494.70		

Gamma Ray Calibration Report

Serial Number:	2001	
Tool Model:	OH	
Performed:	Fri Dec 04 08:49:38 2009	
Calibrator Value:	1.0	GAPI
Background Reading:	0.0	cps
Calibrator Reading:	1.0	cps
Sensitivity:	0.2500	GAPI/cps

Sensor	Offset (ft)	Schematic	Description	Len (ft)	OD (in)	Wt (lb)
GR	26.85		None	0.75	1.50	5.00
			GR-OH (2001) 2001	3.56	3.25	40.00

Tool	Start Depth (ft)	End Depth (ft)	Length (ft)	Weight (lb)	O.D. (in)
CDL-DHT (2501DHT) Digital High Temp CDL Tool	9.69	4.00	201.00		
IEL-GL121 (121)	16.00	4.00	178.00		
LSD DCAL SSD HEADVOLT	18.31 18.02 17.77 16.00				
DIC	6.89				
SP SN	1.50 1.00				

Dataset: brahmsdi.db: field/well/run1/pass2

Total Length: 30.00 ft

Total Weight: 424.00 lb

O.D. 4.00 in