



SINGLE  
INDUCTION  
LOG

Company	Pioneer Natural Resources	Company	Pioneer Natural Resources
Well	Sayulita 14-33	Well	Sayulita 14-33
Field	Purgatorie River	Field	Purgatorie River
County	Las Animas	County	Las Animas
State	CO	State	CO
Location:	API # : 05 071 09717 00 443' FSL & 519' FWL	Other Services	CDL
Permanent Datum	SEC 33 TWP 33S RGE 65W	Elevation	
Log Measured From	Ground Level	K.B. 6527'	
Drilling Measured From	Kelly Bushing 4' Above G.L.	D.F. -----	
	Kelly Bushing	G.L. 6523'	
Date	12/22/09		
Run Number	one		
Depth Driller	930'		
Depth Logger	927'		
Bottom Logged Interval	925'		
Top Log Interval	395'		
Casing Driller	416'		
Casing Logger	415'		
Bit Size	7 7/8"		
Type Fluid in Hole	water		
Density / Viscosity	///		
pH / Fluid Loss	///		
Source of Sample	///		
Rm @ Meas. Temp	///		
Rmf @ Meas. Temp	///		
Rmc @ Meas. Temp	///		
Source of Rmf / Rmc	///		
Rm @ BHT	///		
Time Circulation Stopped	12:00 p.m.		
Time Logger on Bottom	1:25 p.m.		
Maximum Recorded Temperature	///		
Equipment Number	697		
Location	Trinidad		
Recorded By	Worley		
Witnessed By	Mr. Vigil		

<<< Fold Here >>>

All interpretations are opinions based on inferences from electrical or other measurements and we cannot and do not guarantee the accuracy or correctness of any interpretation, and we shall not, except in the case of gross or willful negligence on our part, be liable or responsible for any loss, costs, damages, or expenses incurred or sustained by anyone resulting from any interpretation made by any of our officers, agents or employees. These interpretations are also subject to our general terms and conditions set out in our current Price Schedule.

Comments

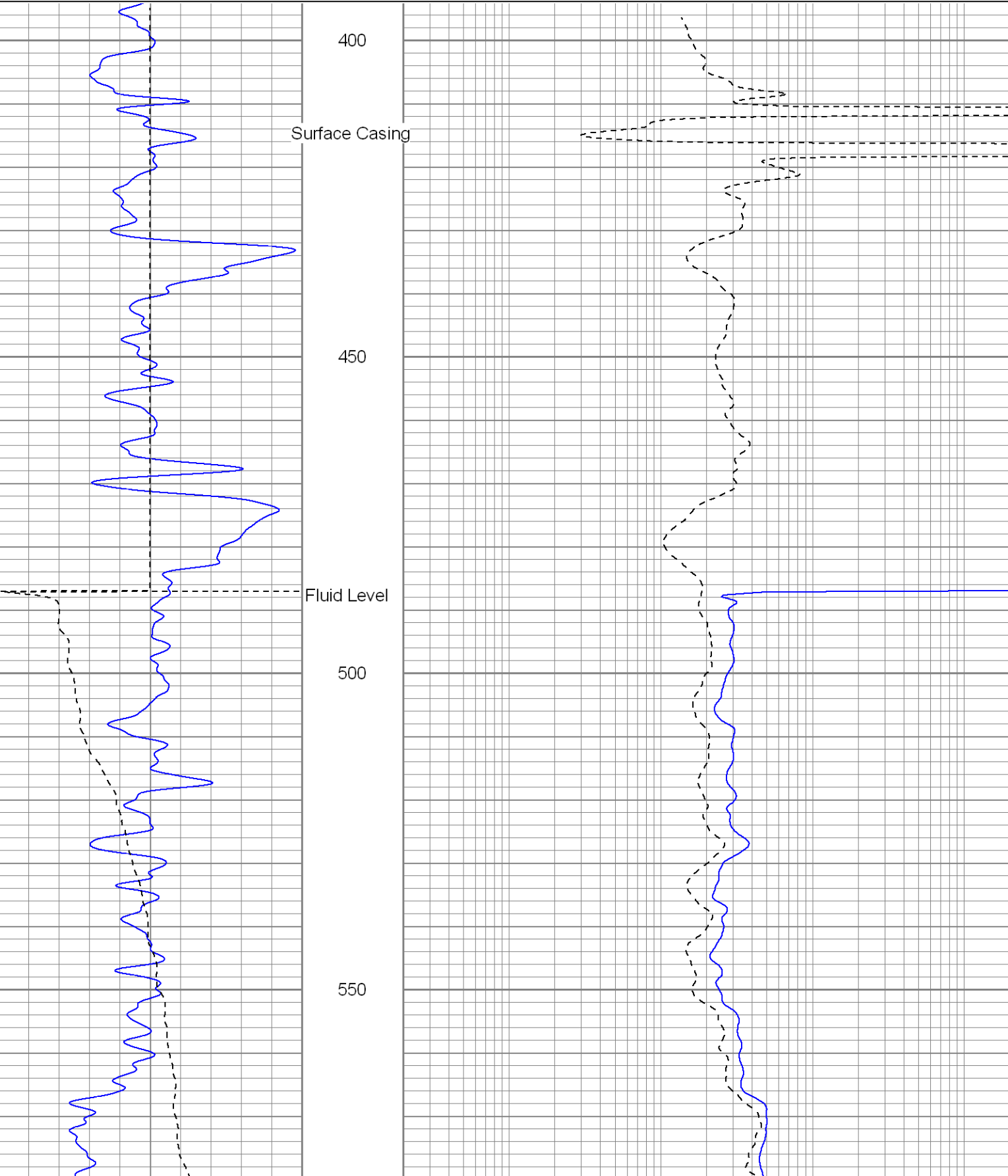
Left at Big 4, go over bridge, go left, stay on main road to Widow Woman Compressor, go left thru gate, drive around Compressor, at PCW 21-4 go left, next left up hill to location.

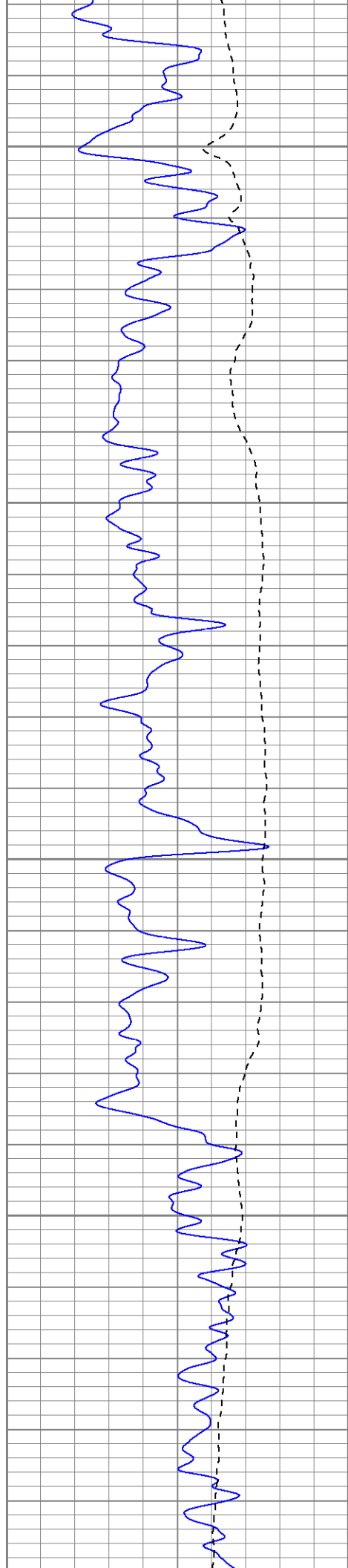


Main Pass

Database File: sayulitadi.db  
Dataset Pathname: pass2.2  
Presentation Format: iel  
Dataset Creation: Tue Dec 22 15:22:57 2009 by Calc Open-Cased 071220  
Charted by: Depth in Feet scaled 1:240

0	GR (GAPI)	200	0.2	DIR (Ohm-m)	2000
-100	SP (mV)	100	0.2	SN (Ohm-m)	2000





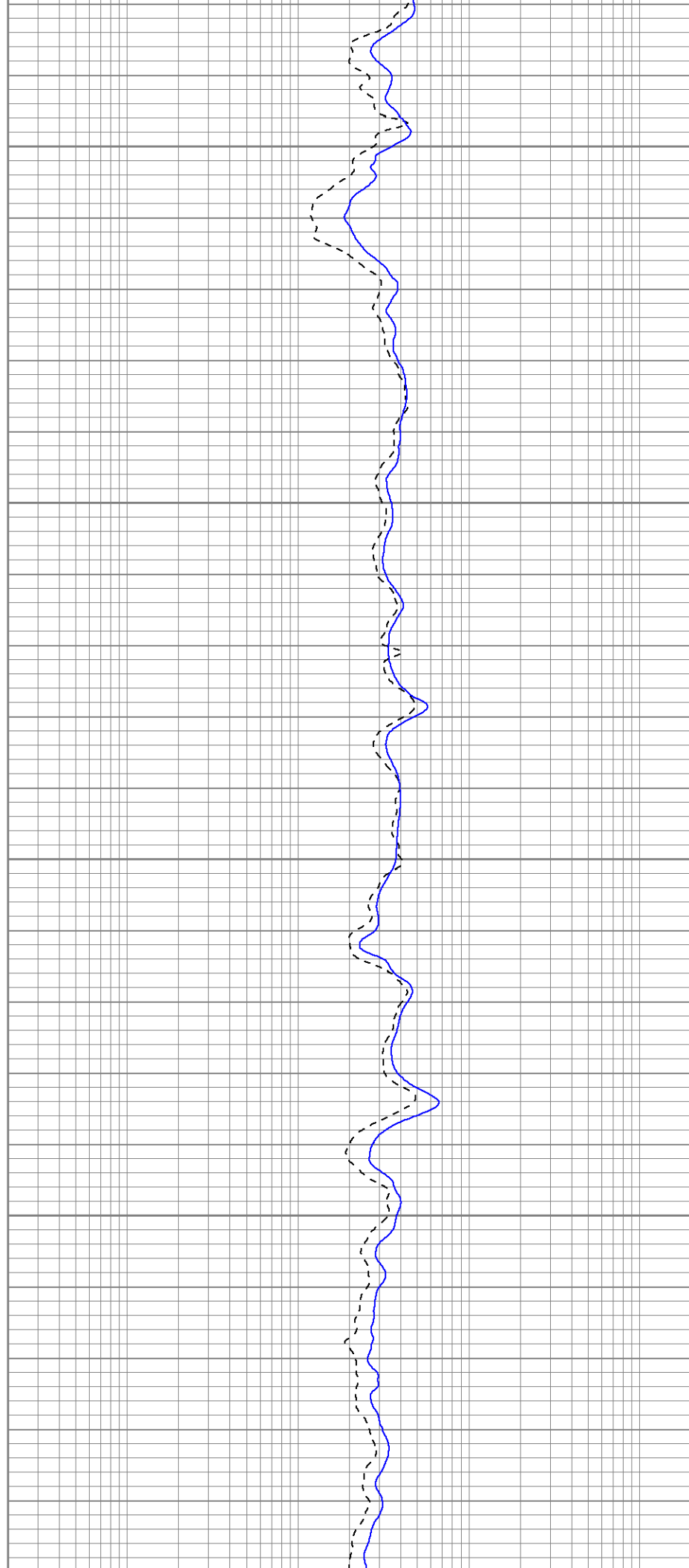
600

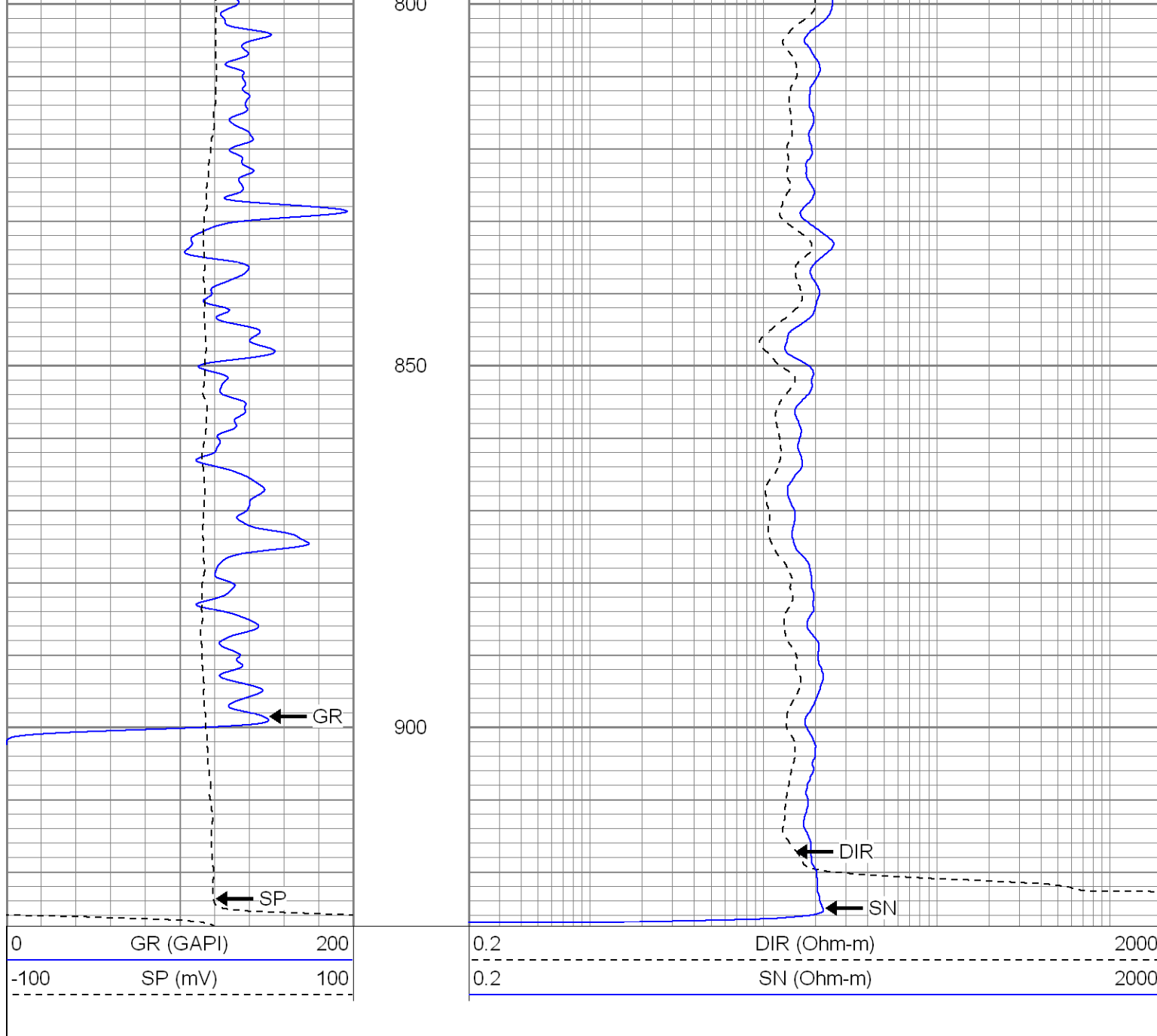
650

700

750

800

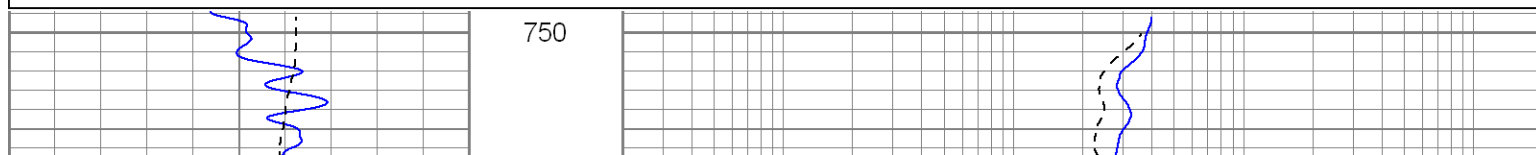


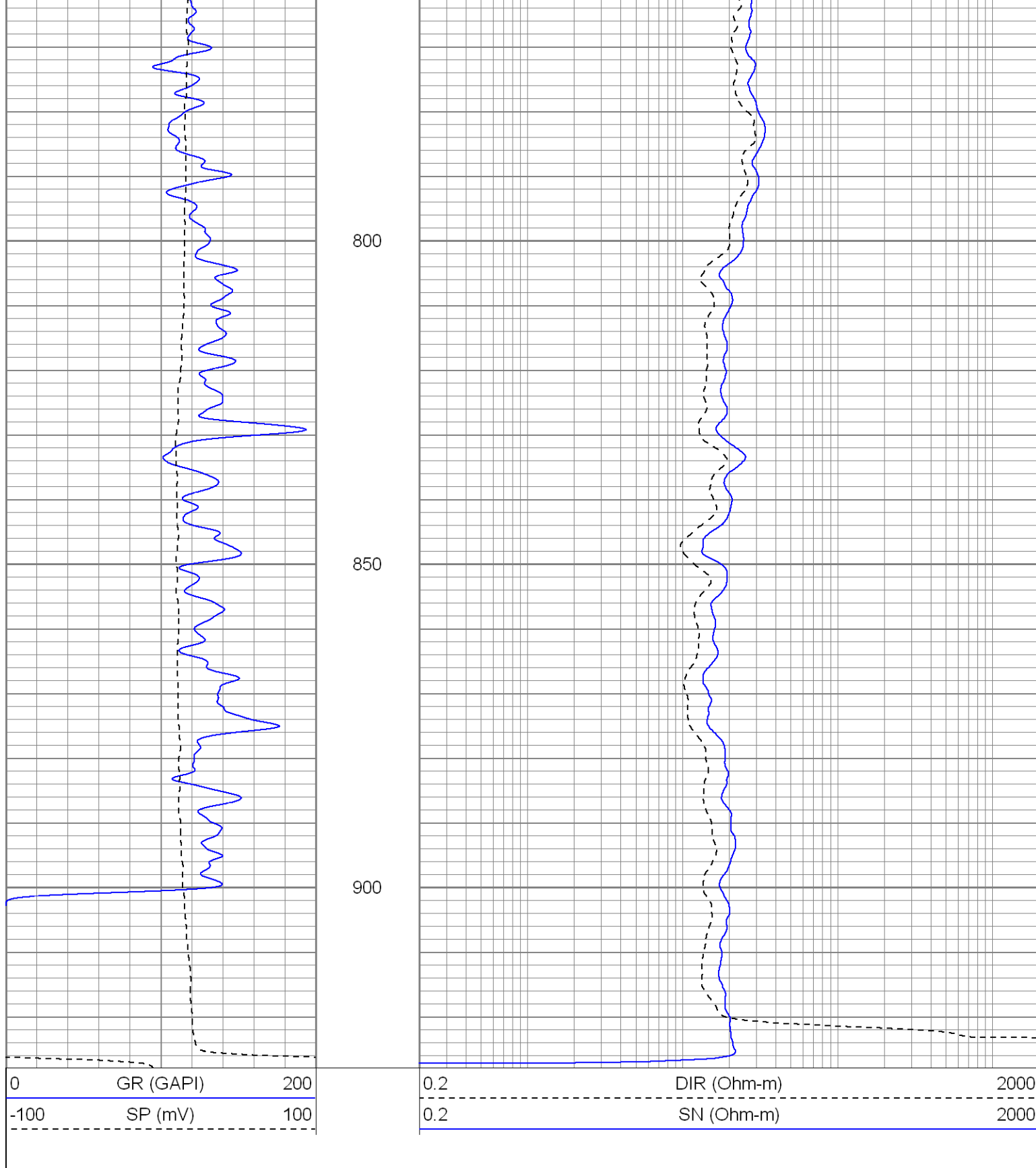


## Repeat Section

Database File: sayulitadi.db  
 Dataset Pathname: pass1.2  
 Presentation Format: iel  
 Dataset Creation: Tue Dec 22 15:26:52 2009 by Calc Open-Cased 071220  
 Charted by: Depth in Feet scaled 1:240

0	GR (GAPI)	200	0.2	DIR (Ohm-m)	2000
-100	SP (mV)	100	0.2	SN (Ohm-m)	2000





### Calibration Report

Database File: sayulitadi.db  
Dataset Pathname: pass2  
Dataset Creation: Tue Dec 22 13:38:12 2009 by Log Open-Cased 071220

### Induction Tool Calibration Report

Serial Number: 121  
Tool Model: GL121  
Downhole Cal Performed: Mon Dec 07 06:31:58 2009



Fri Dec 04 08:51:07 2009

# Compensated Density Calibration Report

Master Calibration					
	Density		Far Detector	Near Detector	
Magnesium	1.710	g/cc	767.26	303.43	cps
Aluminum	2.590	g/cc	171.91	210.81	cps
Spine Angle = 76.32			Density/Spine Ratio = 0.572		
	Size		Reading		
Small Ring	8.00	in	6196.63		
Large Ring	14.00	in	10494.70		

--

Serial Number:	2001	
Tool Model:	OH	
Performed:	Fri Dec 04 08:49:38 2009	
Calibrator Value:	1.0	GAPI
Background Reading:	0.0	cps
Calibrator Reading:	1.0	cps
Sensitivity:	0.2500	GAPI/cps

Sensor	Offset (ft)	Schematic	Description	Len (ft)	OD (in)	Wt (lb)
GR	26.85		None	0.75	1.50	5.00
			GR-OH (2001)	3.56	3.25	40.00
		