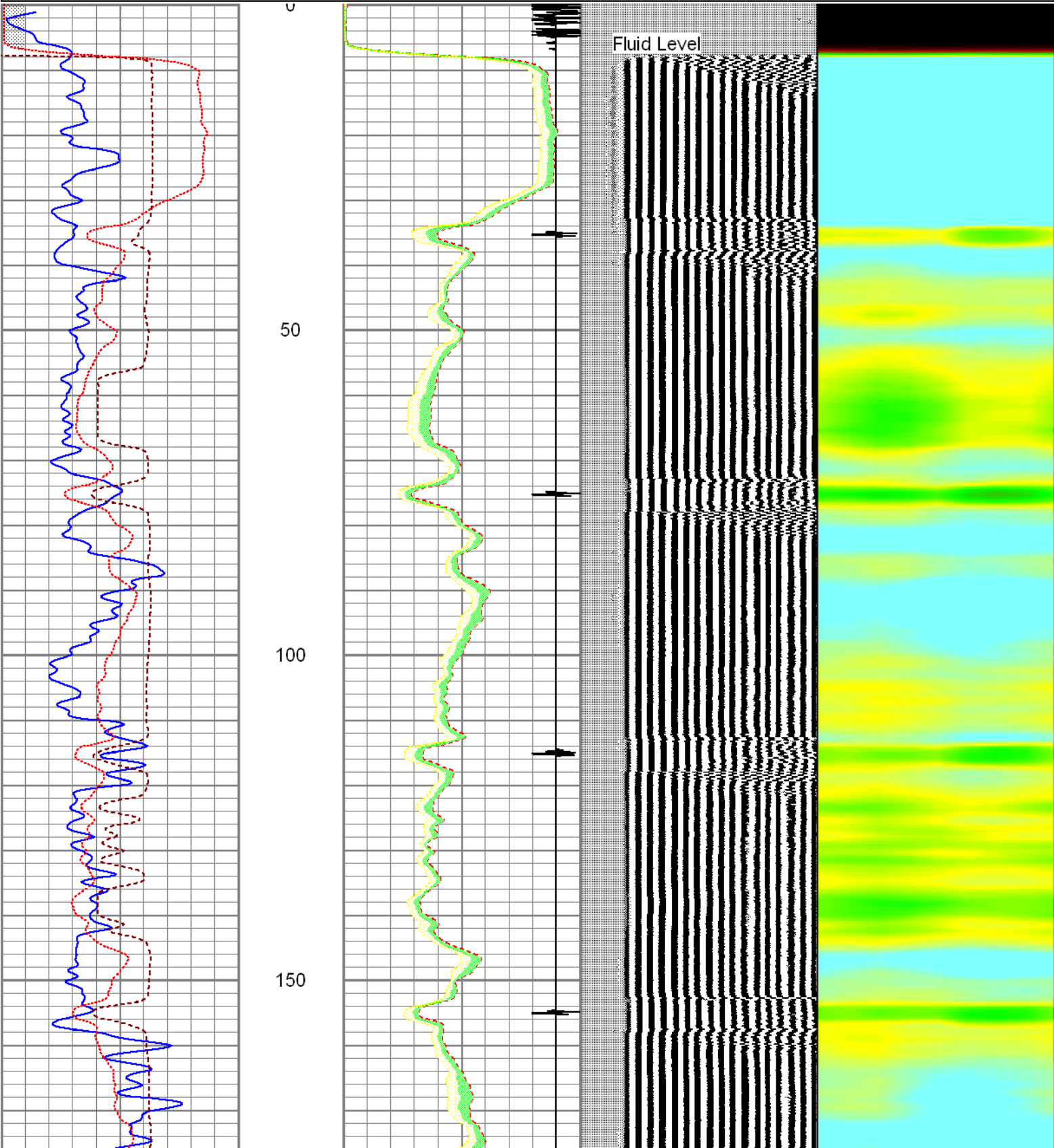


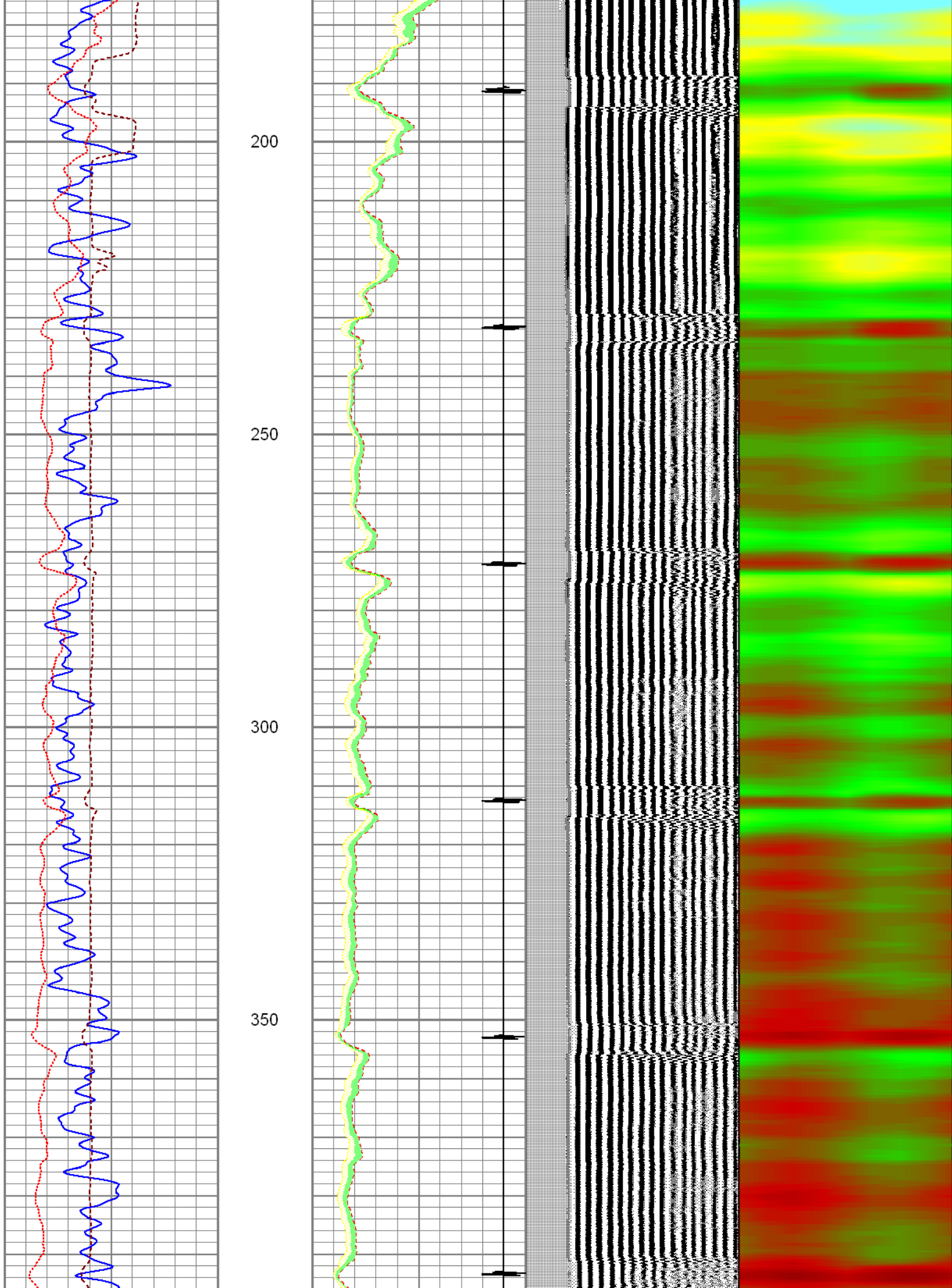
Database File: redbud122109scbl.db
Dataset Pathname: pass2.1
Presentation Format: sectorco
Dataset Creation: Mon Dec 21 17:11:15 2009 by Calc Std Casedhole 09061
Charted by: Depth in Feet scaled 1:240

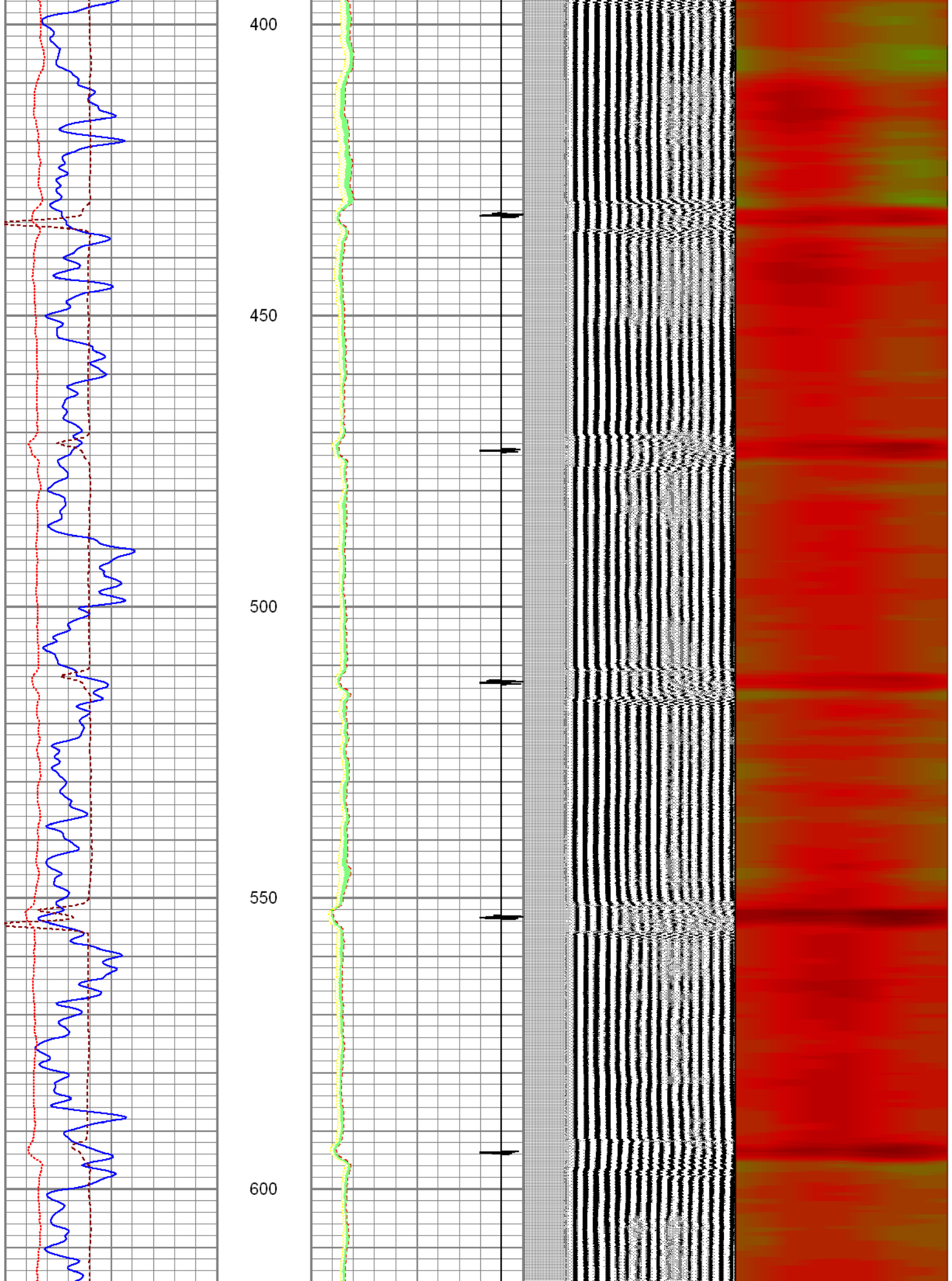
0	GR (GAPI)	200
400	TT3FT (usec)	200
0	AMP3FT (mV)	100

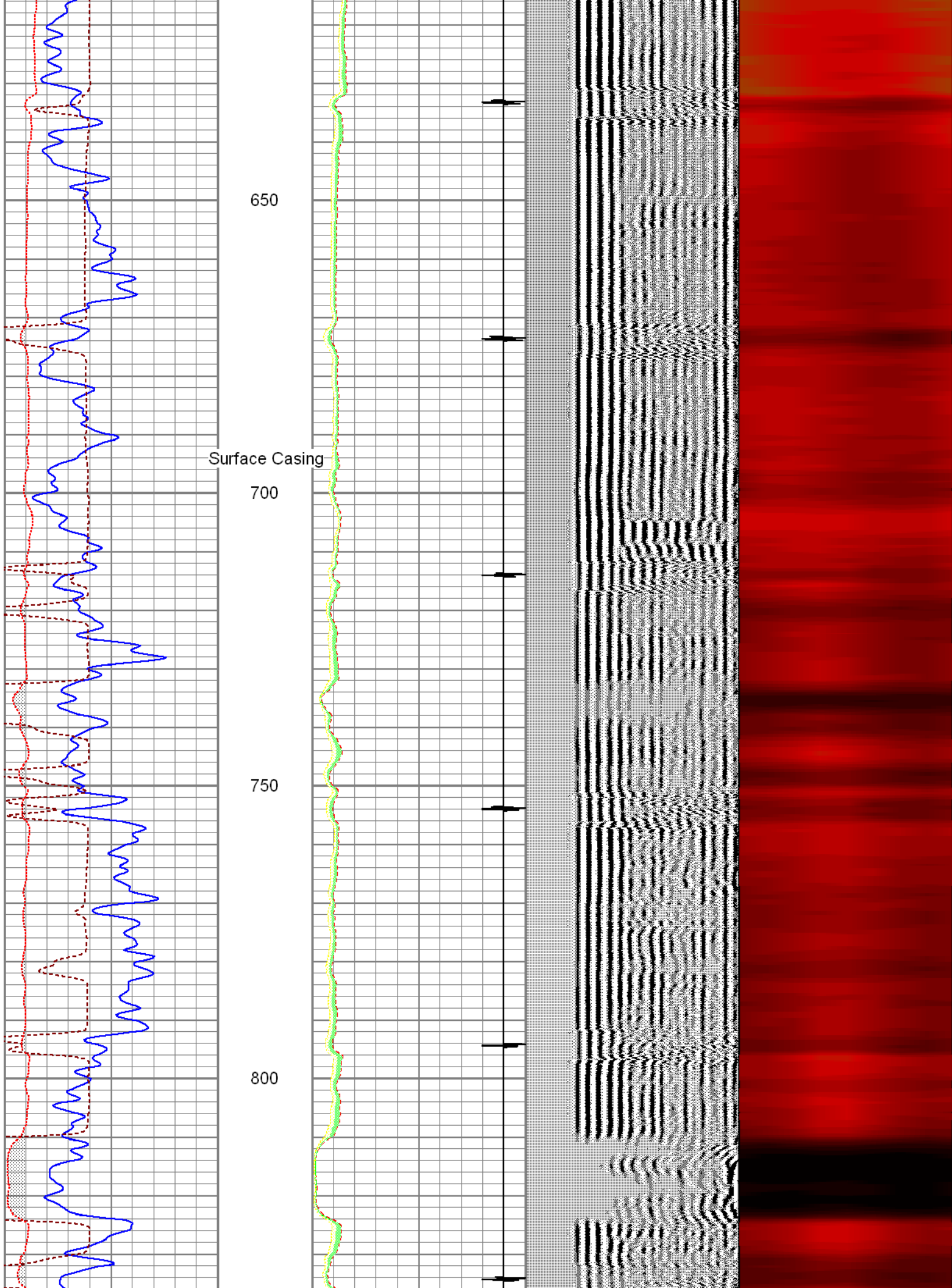
0	AMPMAX	100
0	AMPAVG	100
0	AMPMIN	100
18	CCL	-2

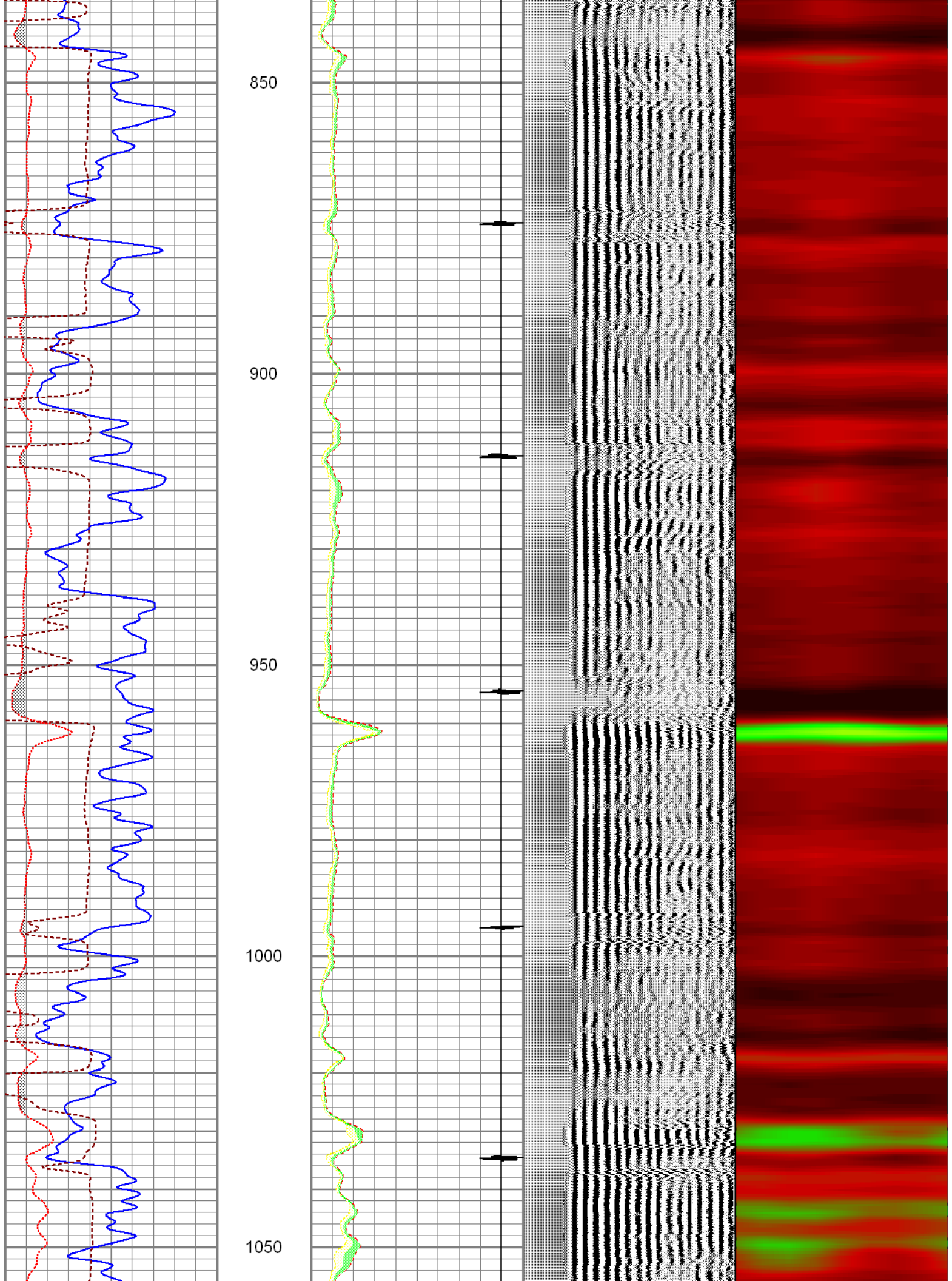
200 WVF5FT 1200 1 Sector Map 8

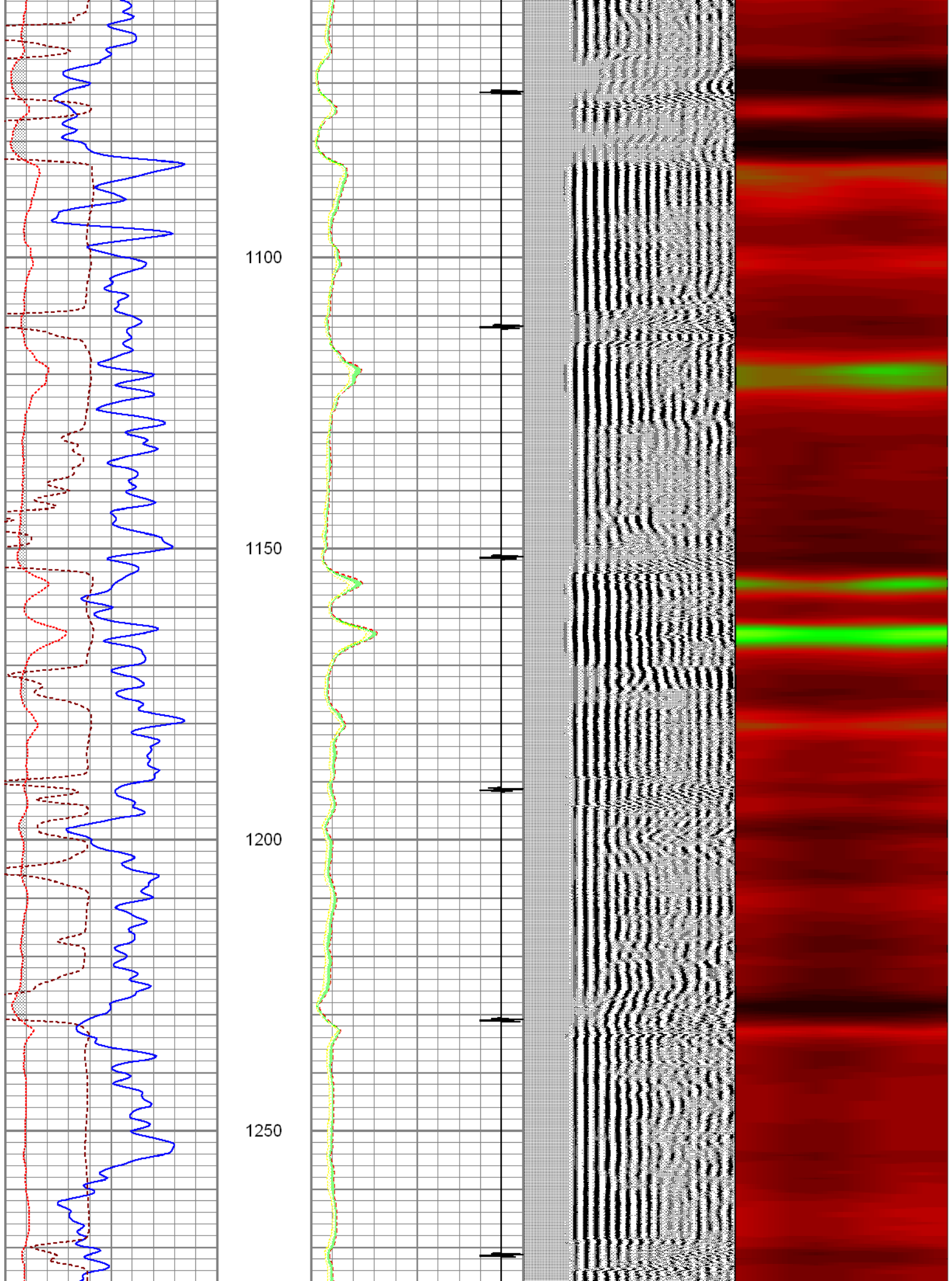


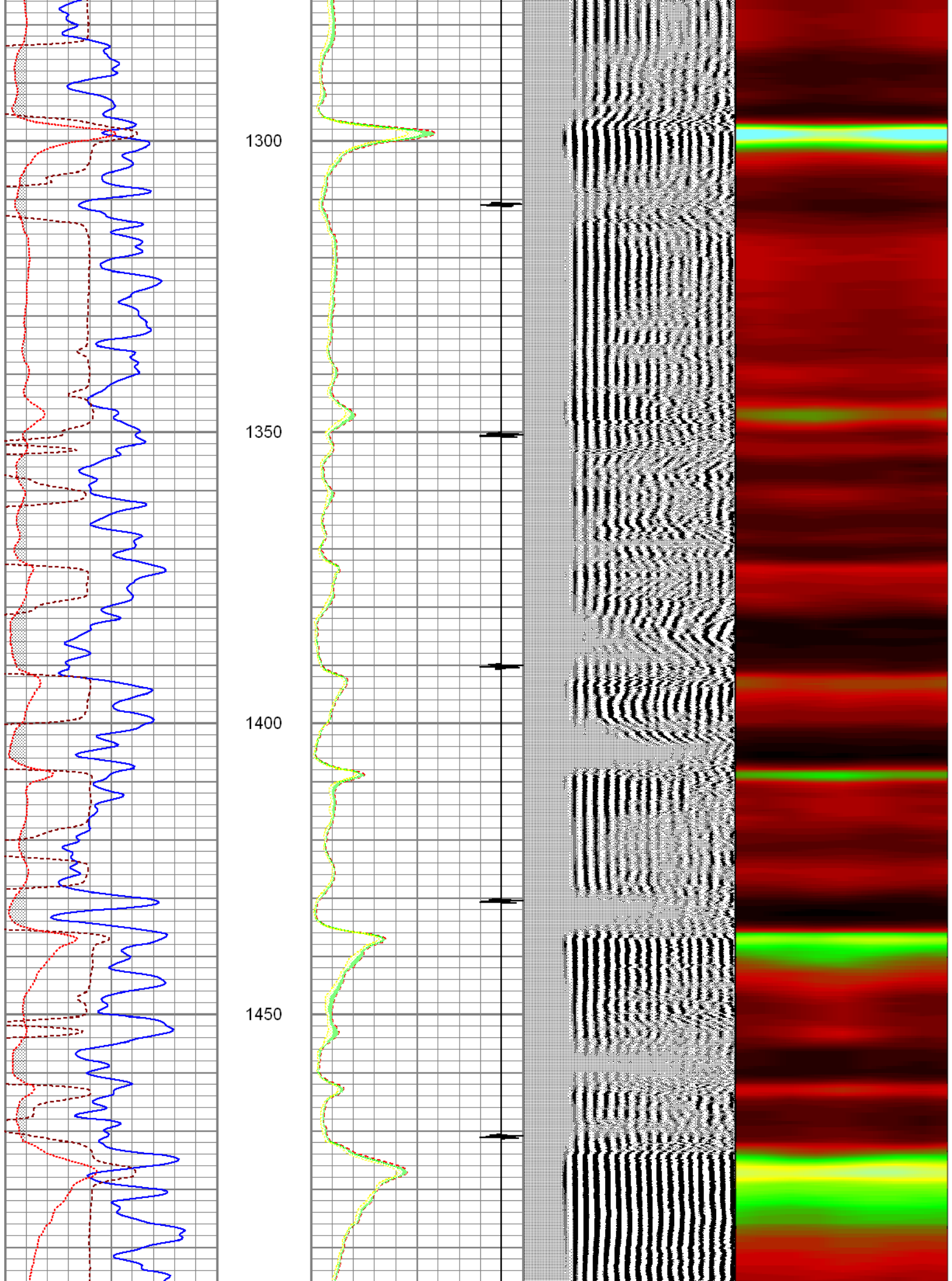


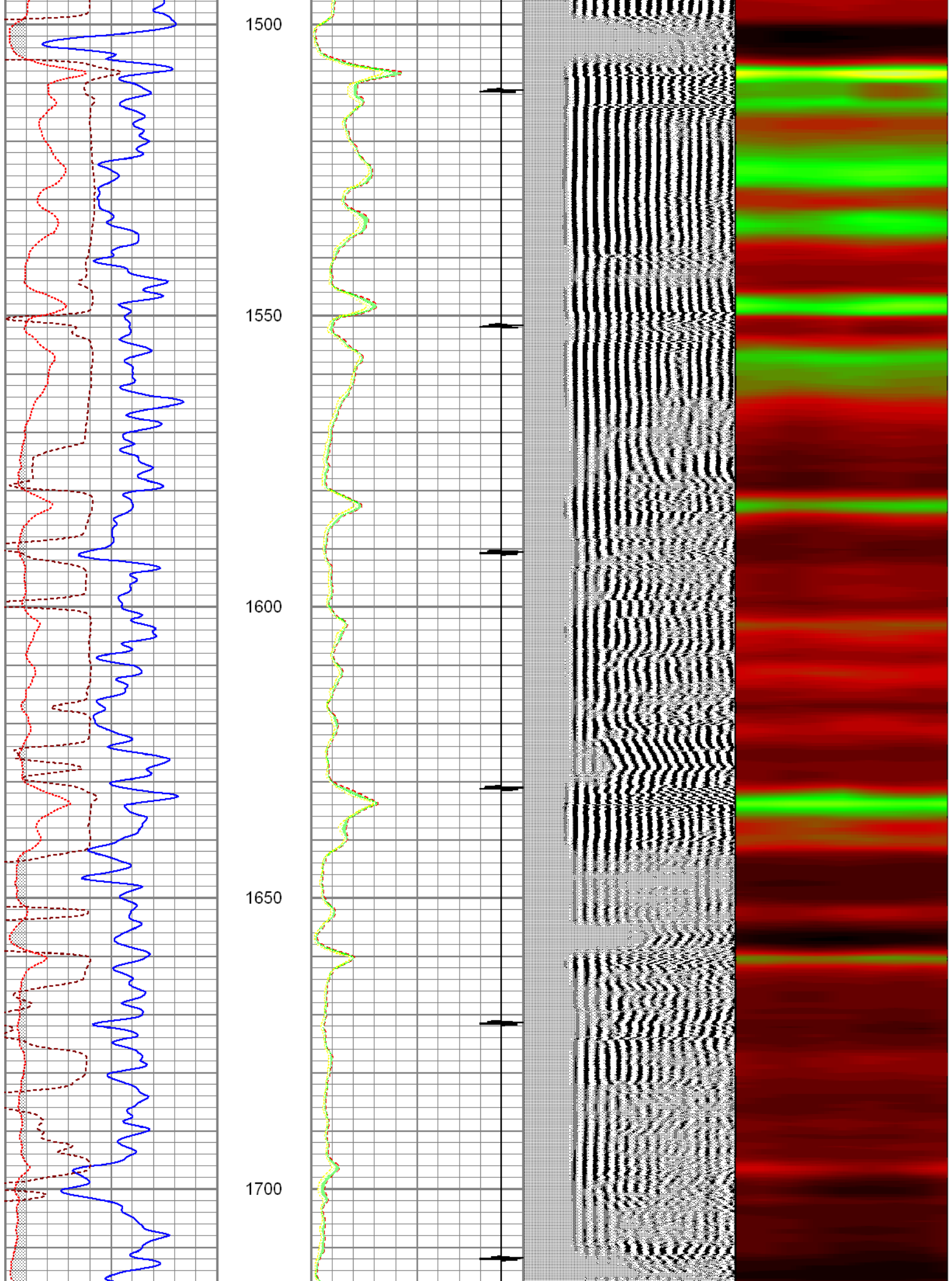


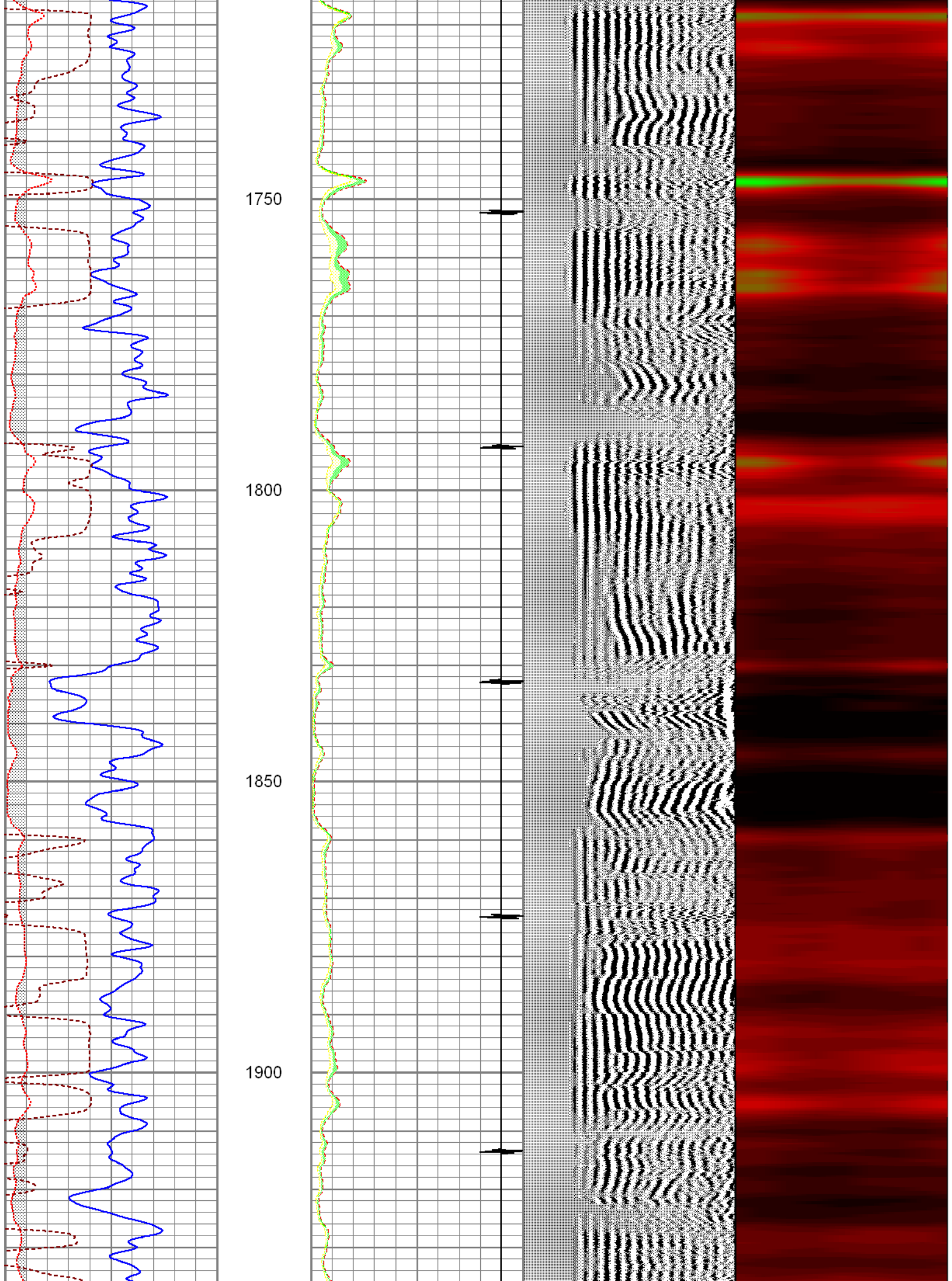


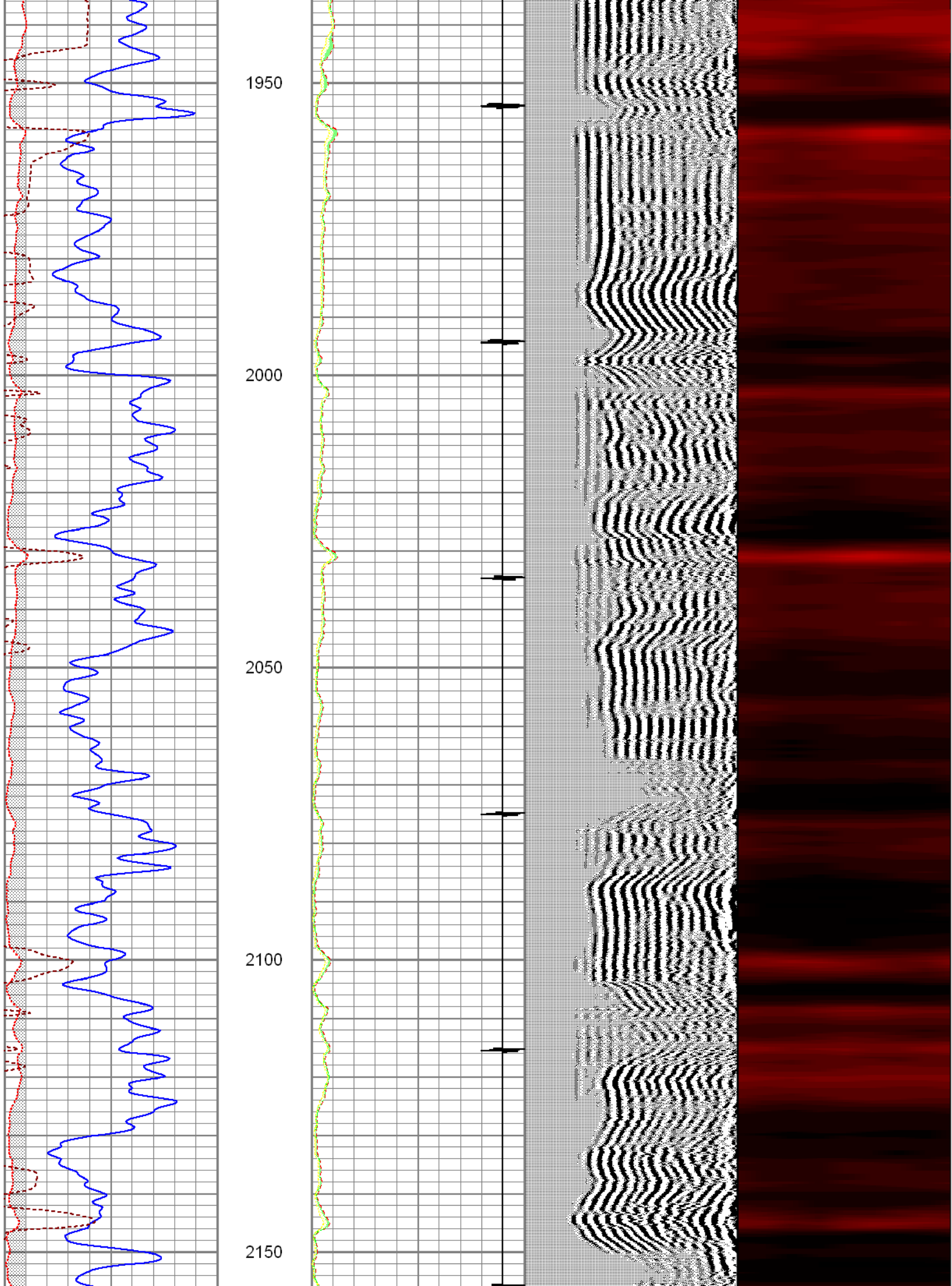


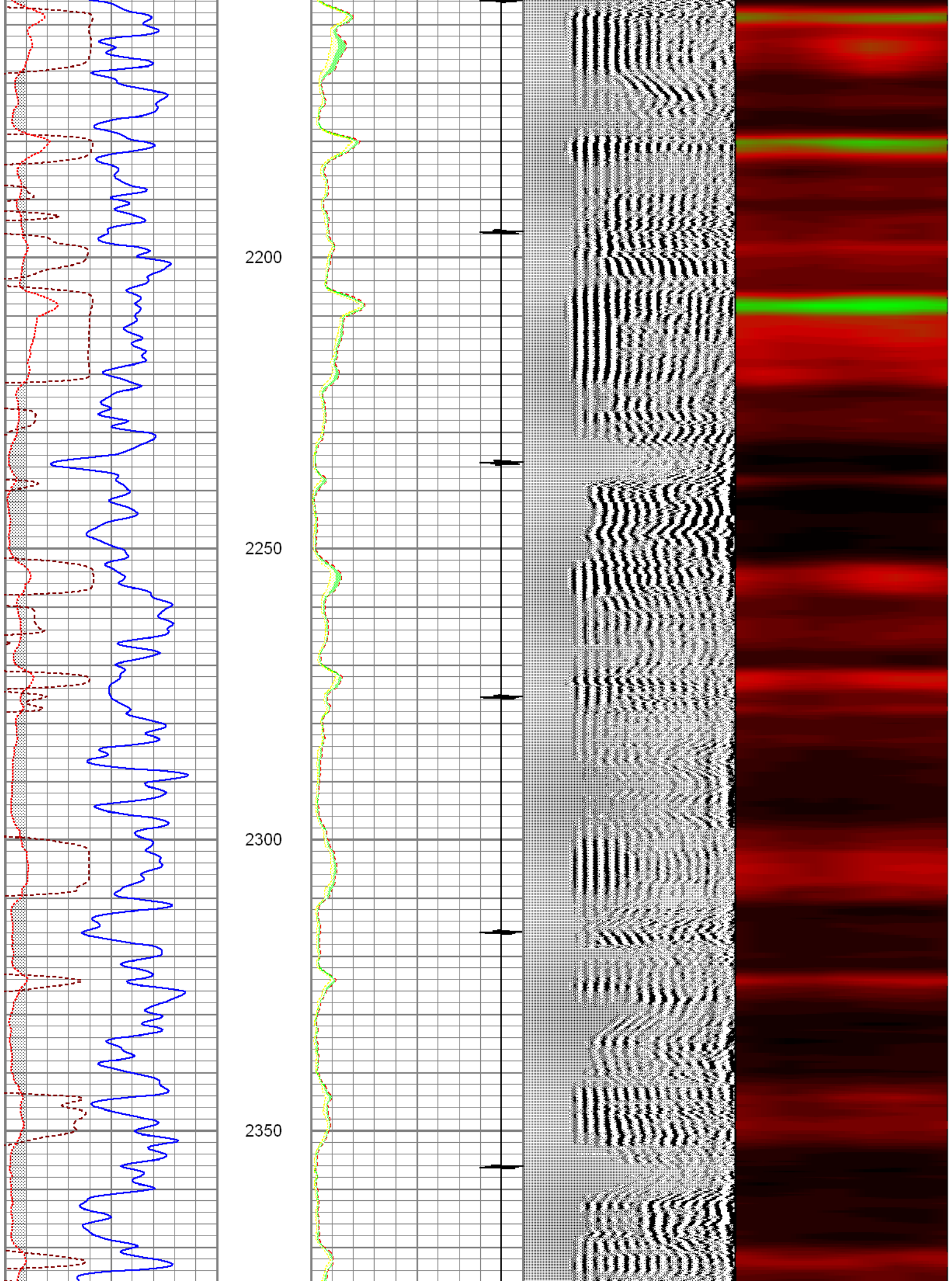


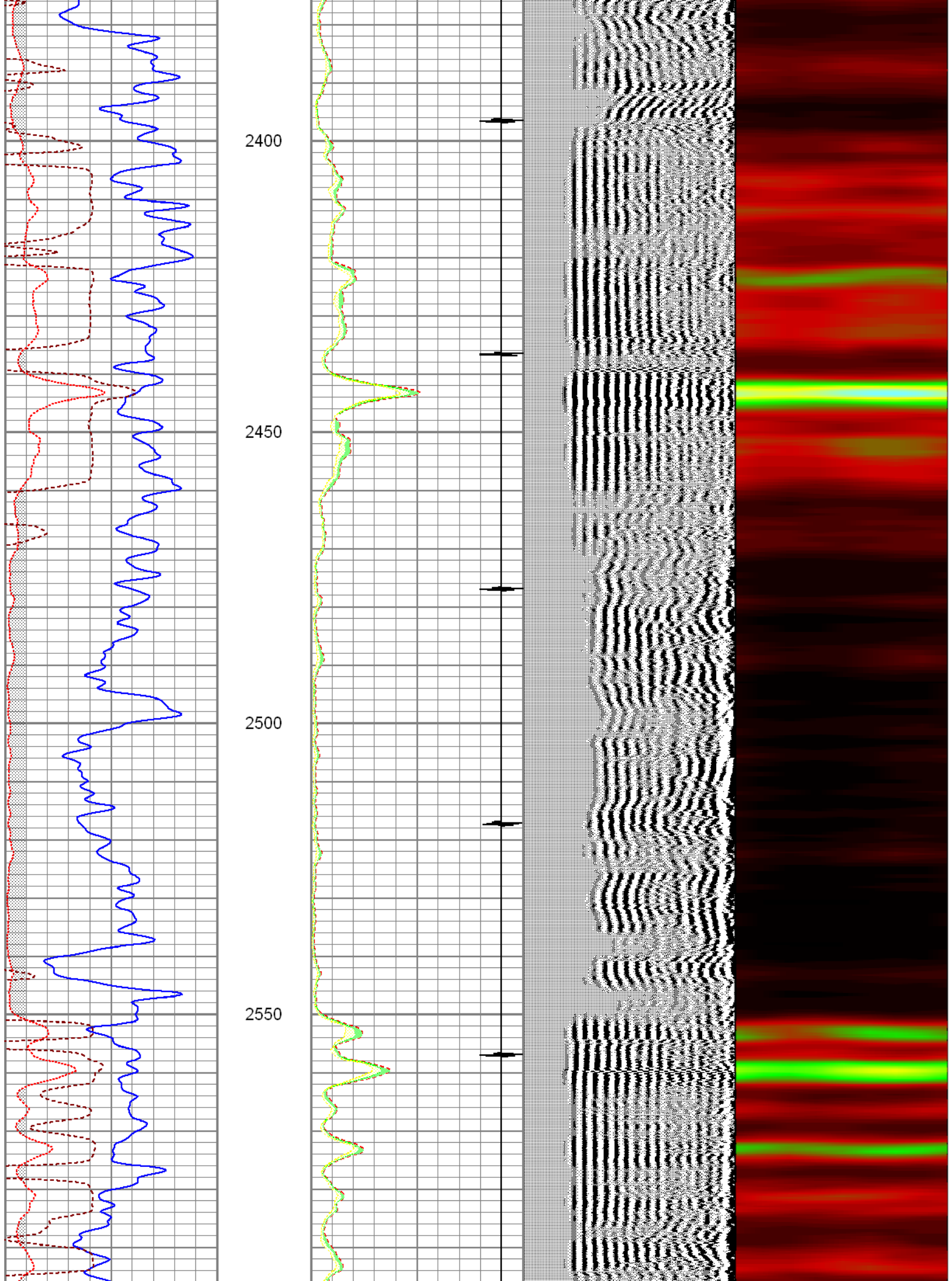


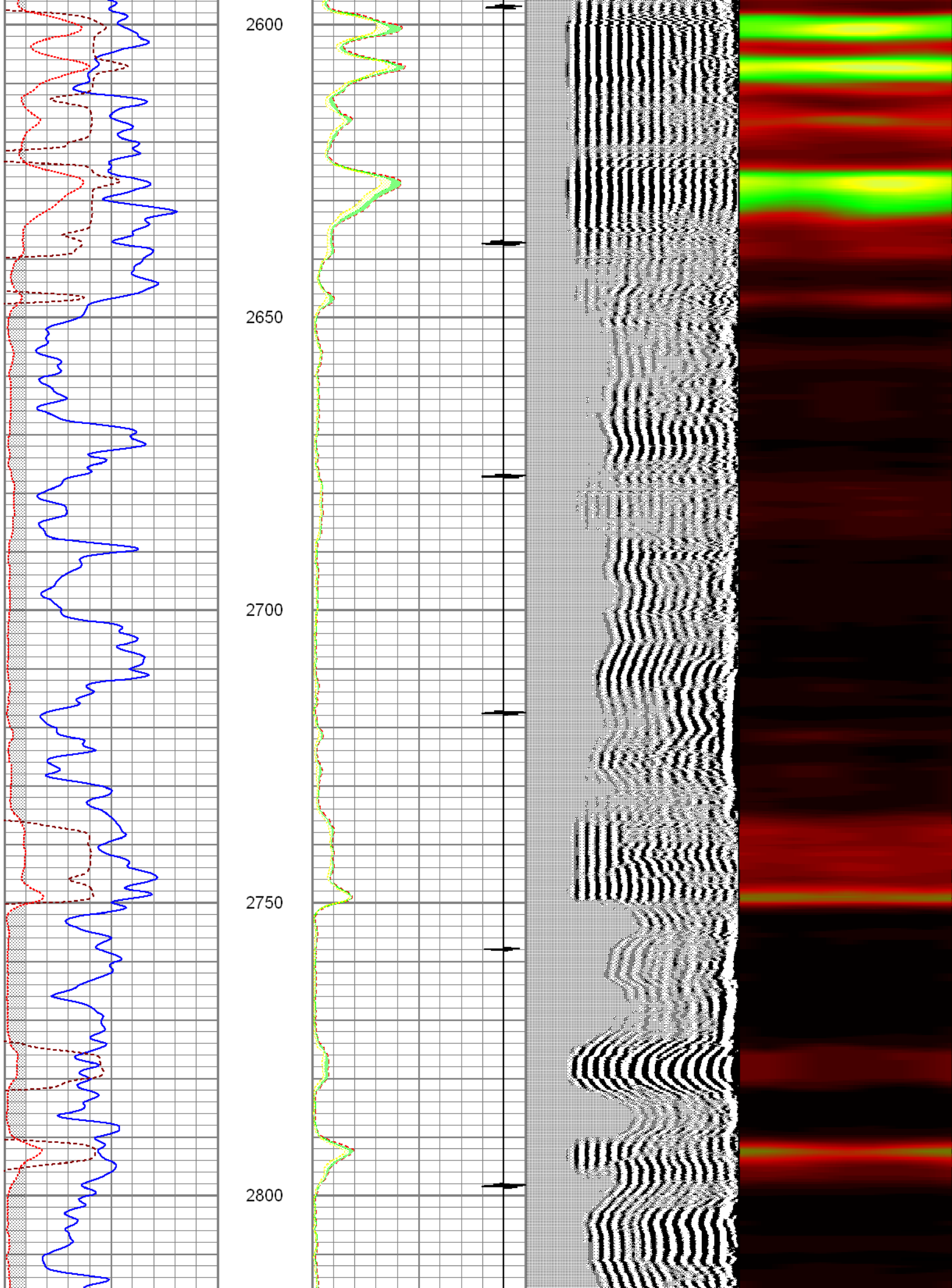


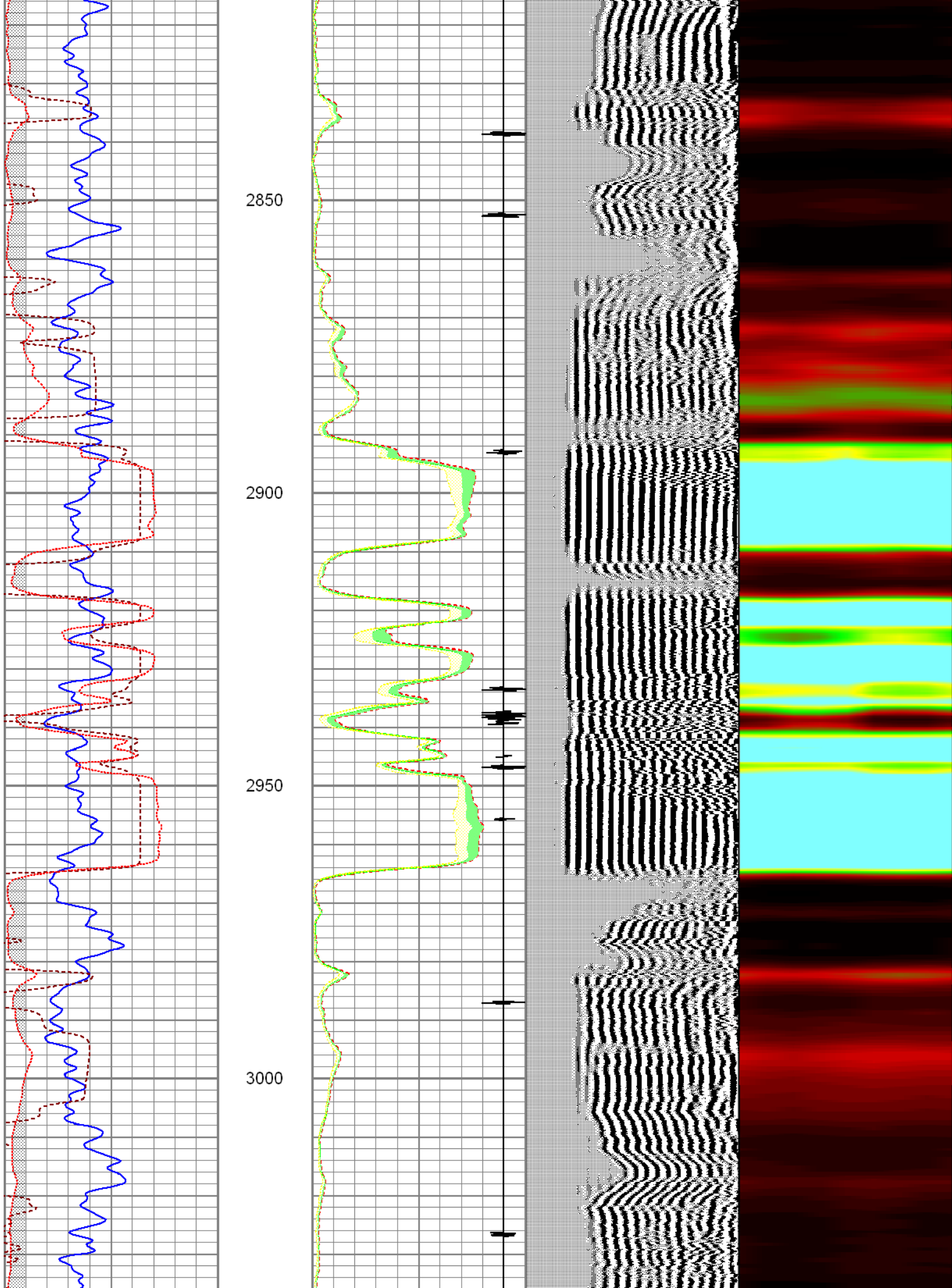


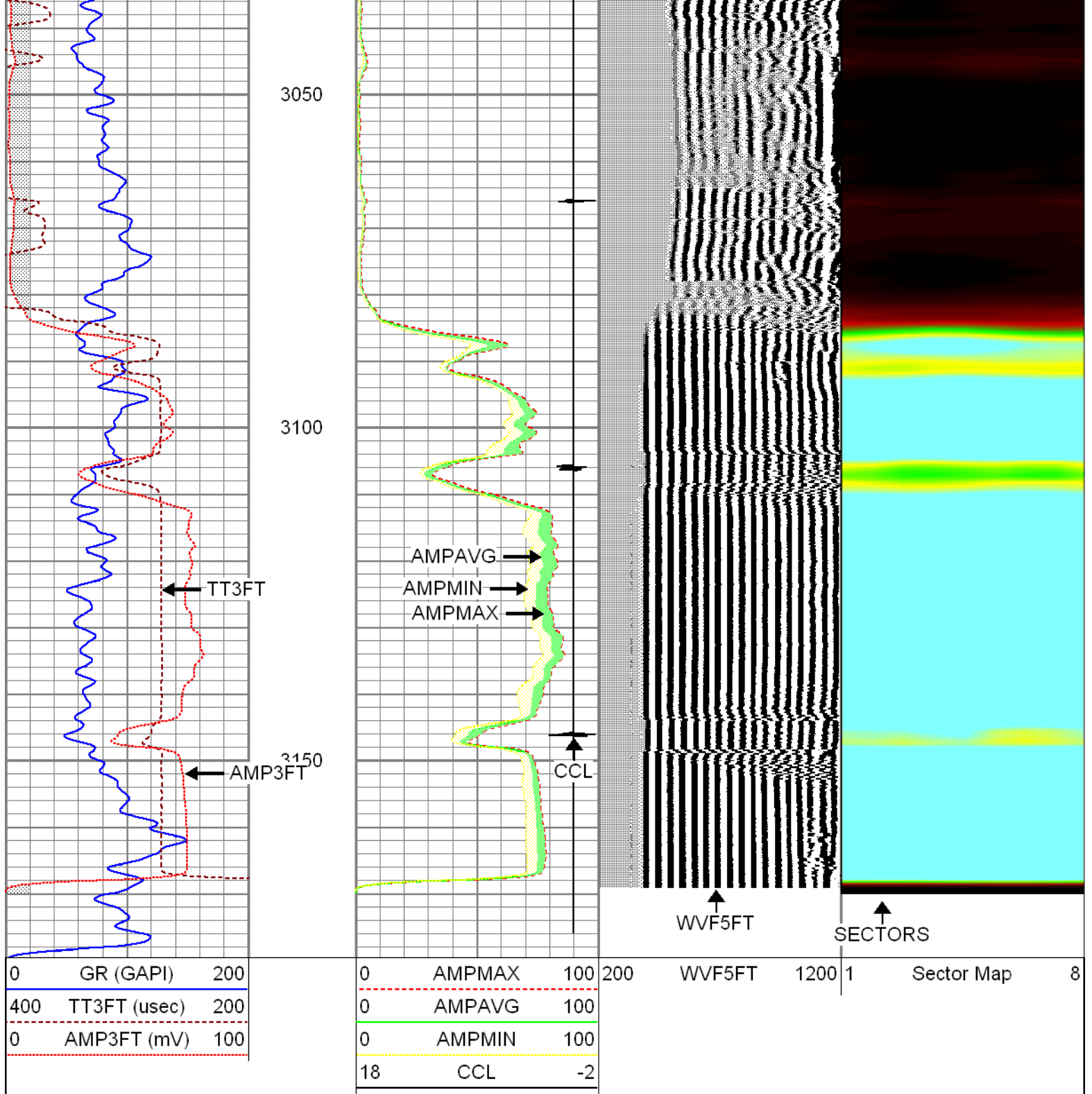






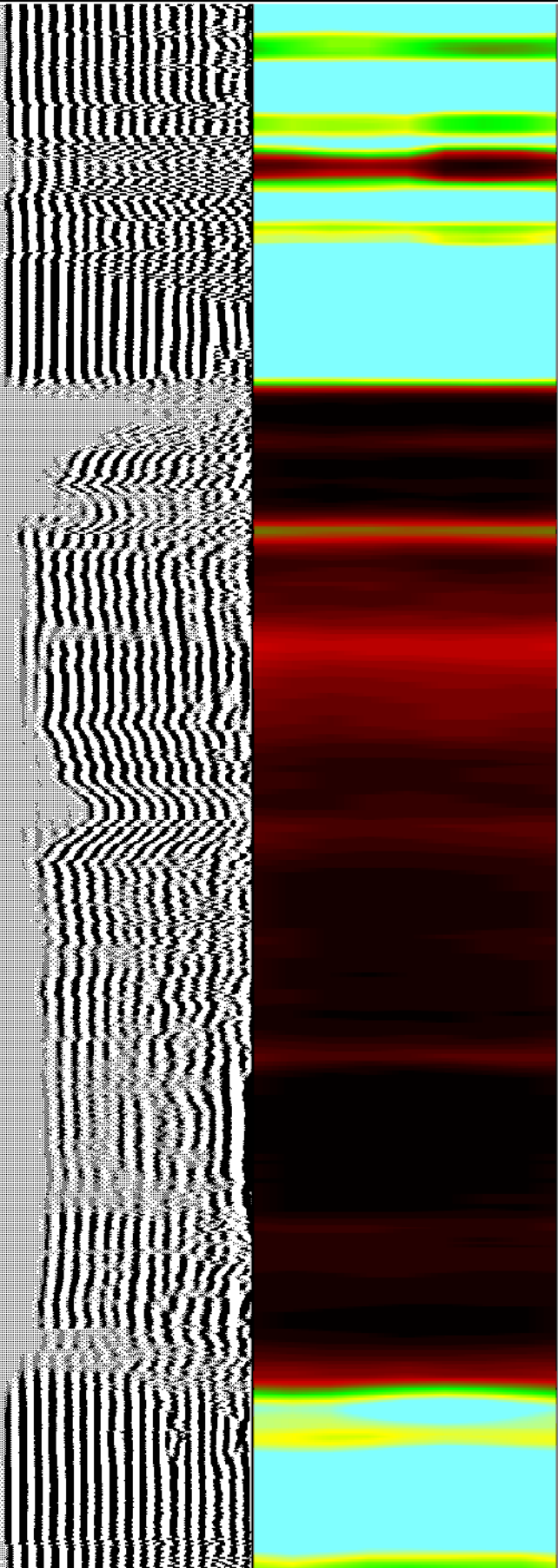
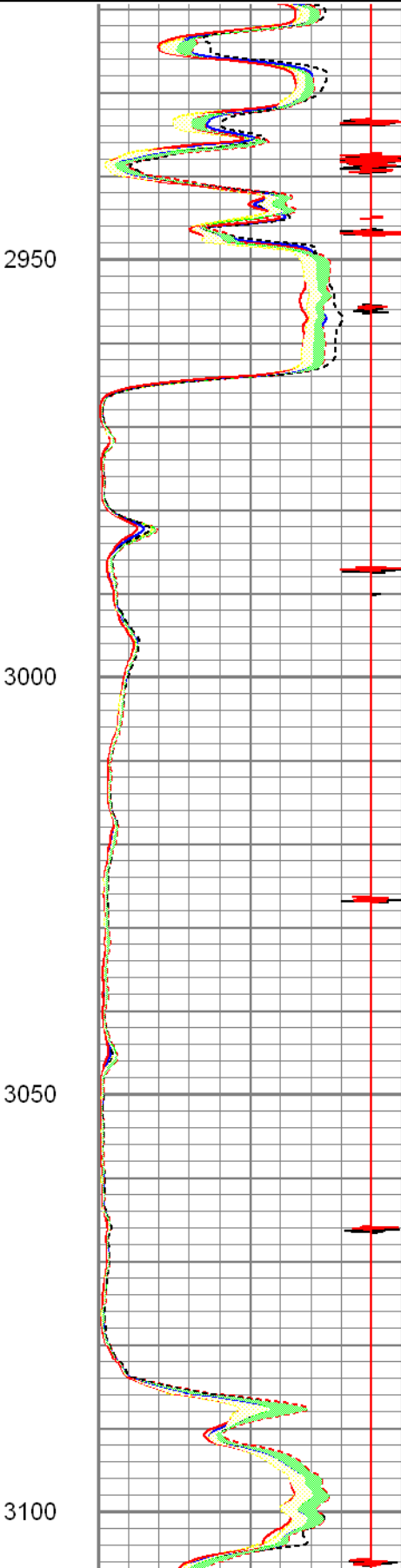
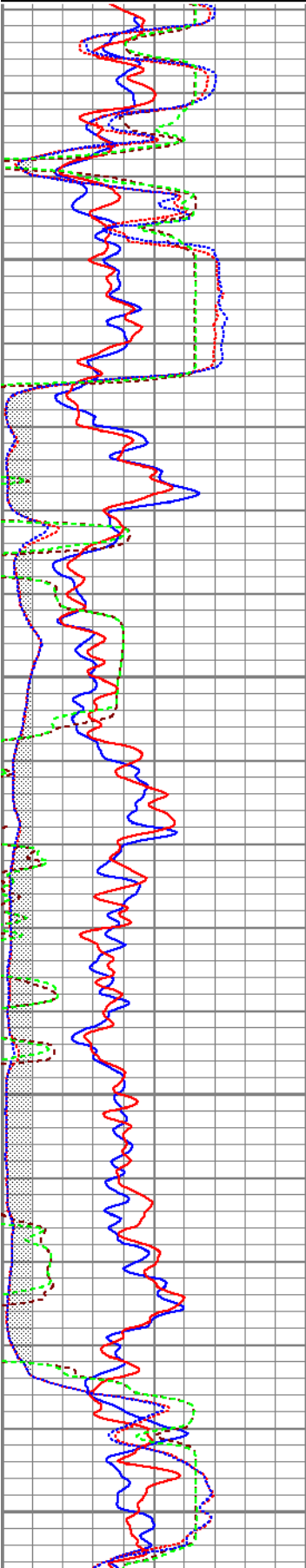


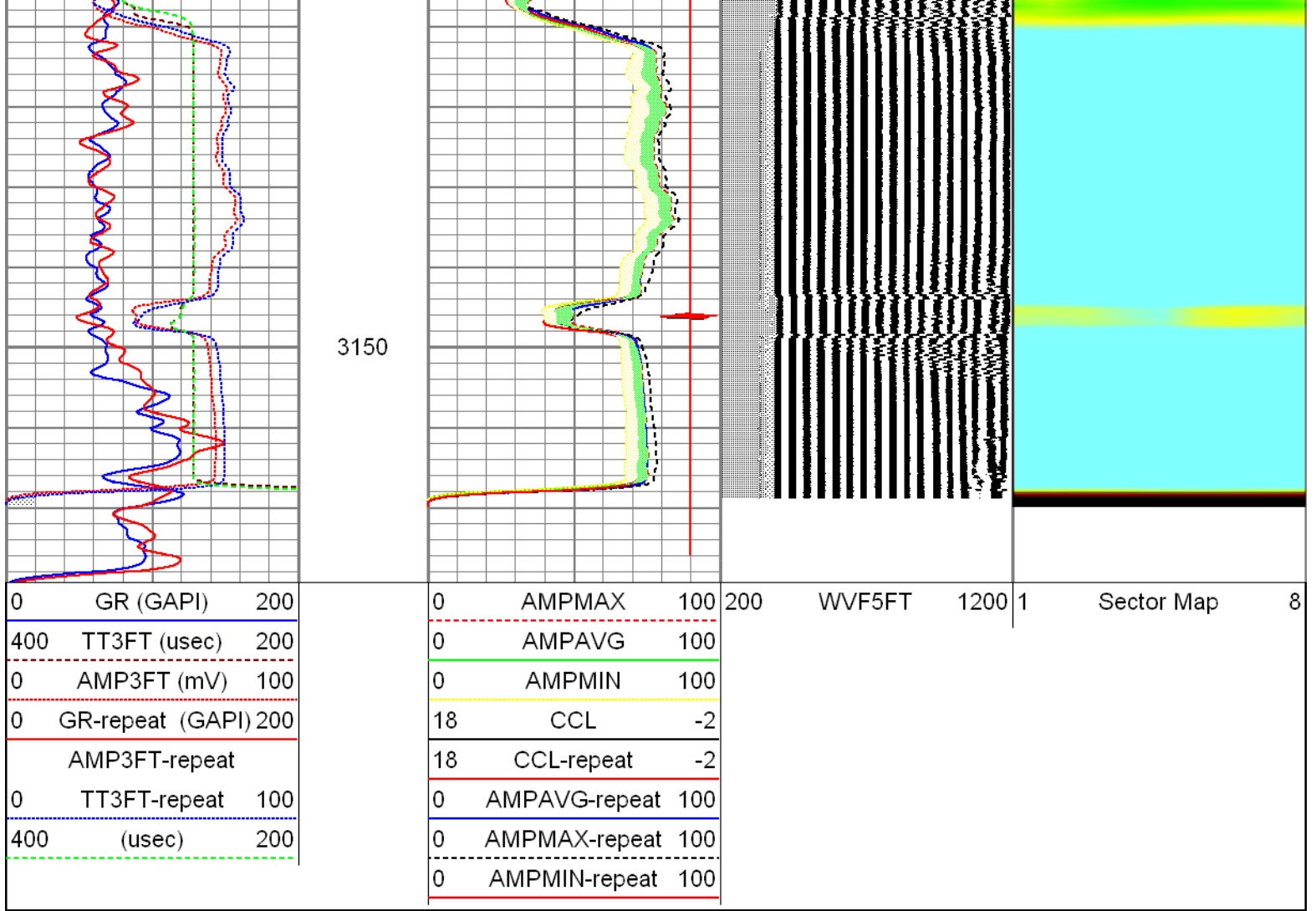




0	AMP3FT (mV)	100
0	GR-repeat (GAPI)	200
AMP3FT-repeat		
0	TT3FT-repeat	100
400	(usec)	200

0	AMPMIN	100
18	CCL	-2
18	CCL-repeat	-2
0	AMPAVG-repeat	100
0	AMPMAX-repeat	100
0	AMPMIN-repeat	100





Calibration Report		
Database File:	redbud122109scbl.db	
Dataset Pathname:	pass1	
Dataset Creation:	Mon Dec 21 16:11:14 2009 by Log Std Casedhole 09061	

Gamma Ray Calibration Report		
Serial Number:	275D_with_INC	
Tool Model:	275D_INC	
Performed:	Fri Dec 11 10:41:41 2009	
Calibrator Value:	200.0	GAPI
Background Reading:	0.0	cps
Calibrator Reading:	200.0	cps
Sensitivity:	0.9950	GAPI/cps

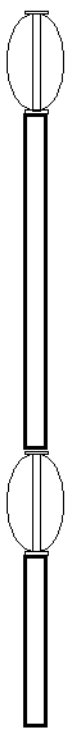
Inclinometer Calibration Report					
Performed:	Fri Dec 11 13:10:24 2009				
	Low Read.	High Read.	Low Ref.	High Ref.	
X Accelerometer	-3583.20	3593.60	-1.00	1.00	gee
Y Accelerometer	-3666.60	3525.20	-1.00	1.00	gee

Segmented Cement Bond Log Calibration Report

Serial Number: 80553
 Tool Model: Radii
 Calibration Casing Diameter: 5.500 in
 Calibration Depth: 3134.413 ft

Master Calibration, performed Wed Dec 16 15:31:02 2009:

	Raw (v)		Calibrated (mv)		Results	
	Zero	Cal	Zero	Cal	Gain	Offset
3'	0.021	1.743	1.000	71.921	41.176	0.152
CAL	0.020	1.534				
5'	0.020	1.731	1.000	71.921	41.472	0.152
SUM						
S1	0.021	1.583	0.800	71.921	45.514	-0.146
S2	0.021	1.699	0.800	71.921	42.371	-0.083
S3	0.021	1.846	0.800	71.921	38.967	-0.012
S4	0.021	1.883	0.800	71.921	38.201	0.004
S5	0.021	1.833	0.800	71.921	39.237	-0.018
S6	0.021	1.773	0.800	71.921	40.596	-0.049
S7	0.021	1.670	0.800	71.921	43.128	-0.098
S8	0.021	1.554	0.800	71.921	46.375	-0.160

Sensor	Offset (ft)	Schematic	Description	Len (ft)	OD (in)	Wt (lb)
			TitanSmall Small Titan 3 Bowspring Centralizer	2.73	1.69	5.00
WVF3FT	11.48					
WVFCAL	11.48					
WVFS1	11.48					
WVFS2	11.48		RBT-Radii (80553) Probe Radii SCBL Tool	8.75	2.75	90.00
WVFS3	11.48					
WVFS4	11.48					
WVFS5	11.48					
WVFS6	11.48					
WVFS7	11.48					
WVFS8	11.48					
WVF5FT	10.48		TitanSmall Small Titan 3 Bowspring Centralizer	2.73	1.69	5.00
CCL	3.50					
ACCX	1.83		GR-275D_INC (275D_with_INC) 2-3/4" GR-CCL with Inclination	4.50	2.75	50.00
ACCY	1.83					
ACCZ	1.83					
GR	0.83					

Dataset: redbud122109scbl.db: field/well/run1/pass1
 Total Length: 18.71 ft
 Total Weight: 150.00 lb
 O.D.: 2.75 in