

Company Pioneer Natural Resources
Well Redbud 44-7
Field Purgatoire River
County Las Animas
State Colorado

Company Pioneer Natural Resources
Well Redbud 44-7
Field Purgatoire River
County Las Animas State Colorado

Location: API #: 05 071 09697 00
459' FSL & 383' FEL
SEC 7 TWP 32S RGE 66W
Permanent Datum Ground Level Elevation 8062'
Log Measured From Kelly Bushing 9' AGL
Drilling Measured From Kelly Bushing
Other Services
None
Elevation
K.B. 8071'
D.F. -----
G.L. 8062'

Date 12-18-09

Run Number One
Depth Driller 3240'
Depth Logger 3180'
Bottom Logged Interval 3178'
Top Log Interval 2650'
Open Hole Size 7 7/8"
Type Fluid Water
Density / Viscosity
Max. Recorded Temp.
Estimated Cement Top Surface
Time Well Ready 3:00 p.m.
Time Logger on Bottom 3:15 p.m.
Equipment Number T747
Location Trinidad, Co.
Recorded By L. Smith
Witnessed By David Martinez

Borehole Record				Tubing Record			
Run Number	Bit	From	To	Size	Weight	From	To
Casing Record		Size		Vgt/Ft	Top		Bottom
Surface String		8 5/8"		24#	0		695'
Prot. String							
Production String		5.5"		17#	0		n/a
Liner							

<<< Fold Here >>>

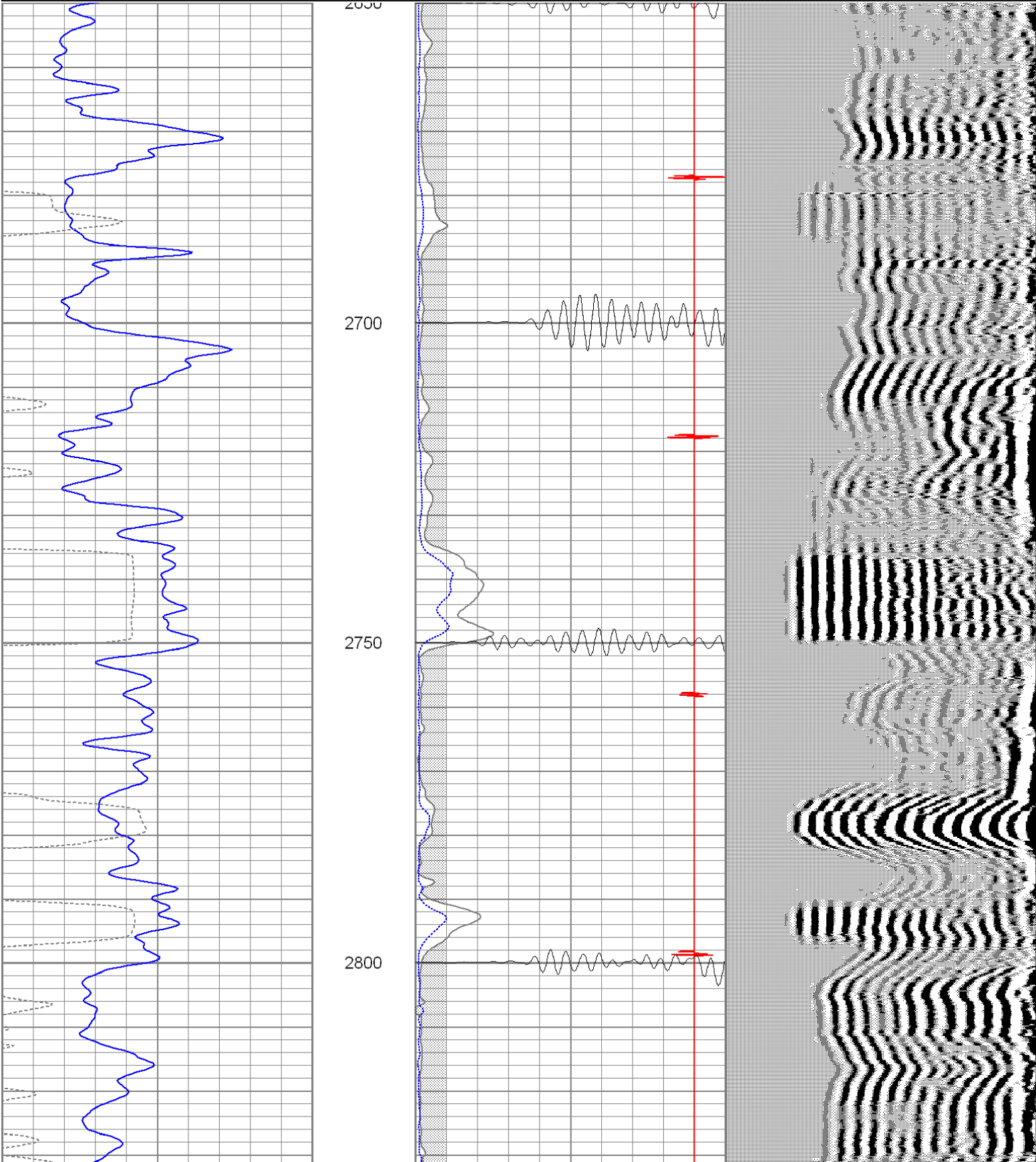
All interpretations are opinions based on inferences from electrical or other measurements and we cannot and do not guarantee the accuracy or correctness of any interpretation, and we shall not, except in the case of gross or willful negligence on our part, be liable or responsible for any loss, costs, damages, or expenses incurred or sustained by anyone resulting from any interpretation made by any of our officers, agents or employees. These interpretations are also subject to our general terms and conditions set out in our current Price Schedule.

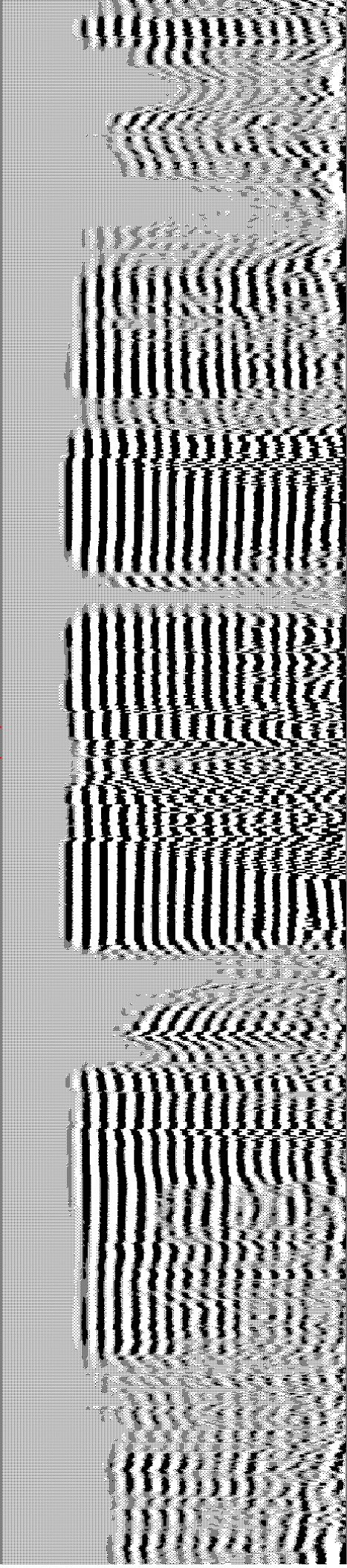
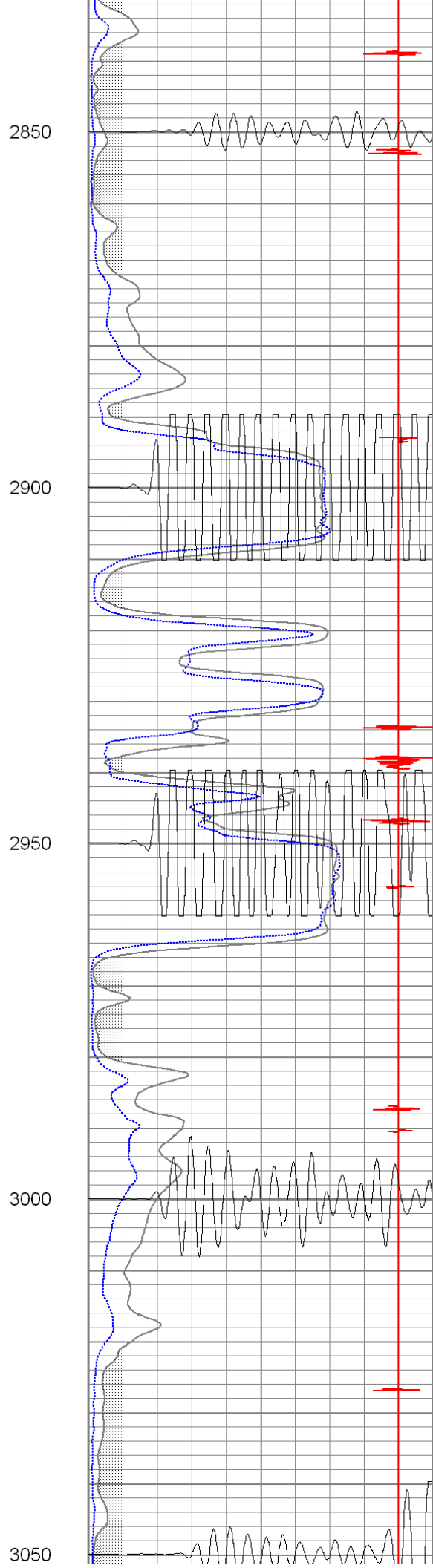
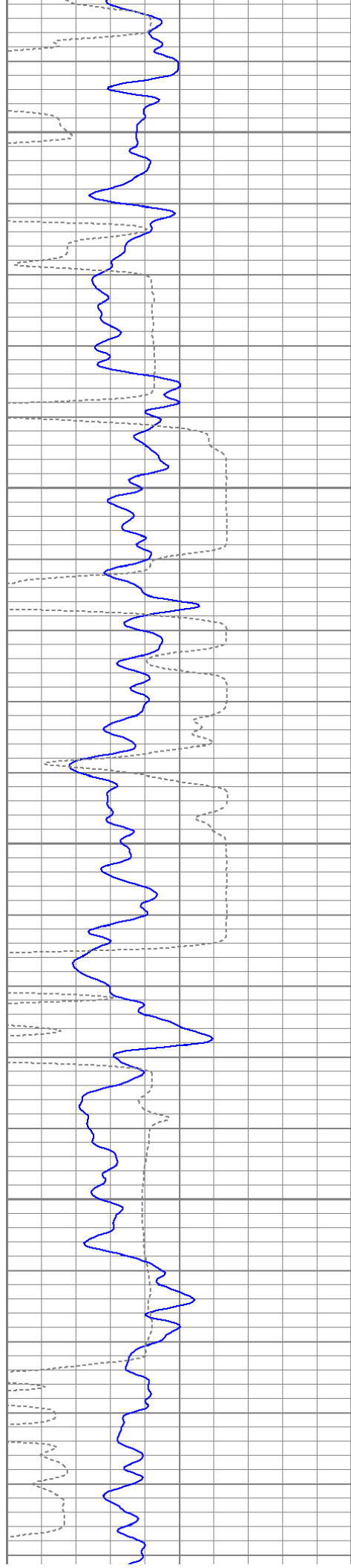
Comments

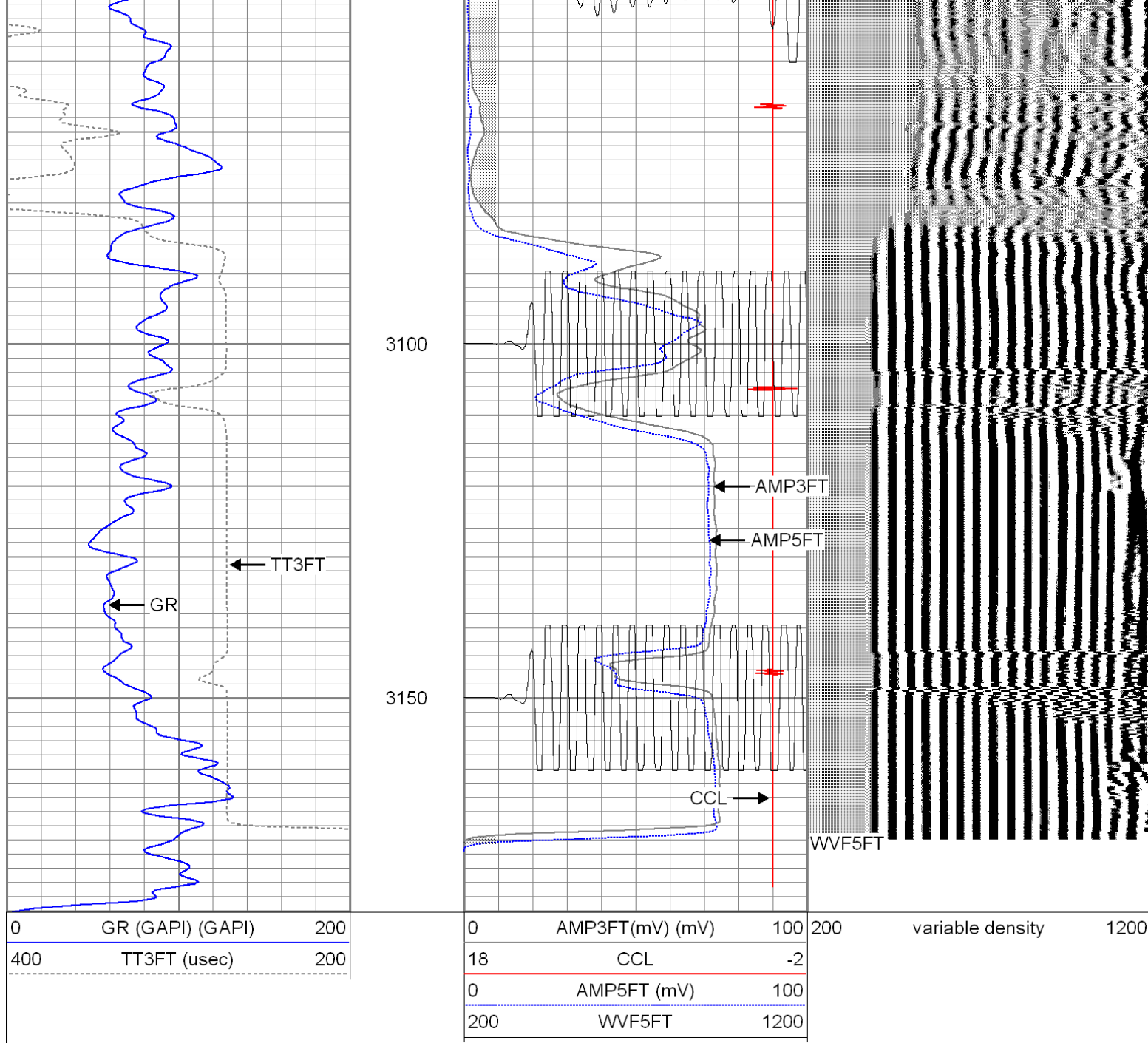
Thanks for using The Perforators

Database File: redbud121809b.db
Dataset Pathname: pass2
Presentation Format: cblpnr
Dataset Creation: Fri Dec 18 15:31:33 2009 by Log Std Casedhole 09061
Charted by: Depth in Feet scaled 1:240

0	GR (GAPI) (GAPI)	200	0	AMP3FT(mV) (mV)	100	200	variable density	1200
400	TT3FT (usec)	200	18	CCL	-2			
			0	AMP5FT (mV)	100			
			200	WVF5FT	1200			

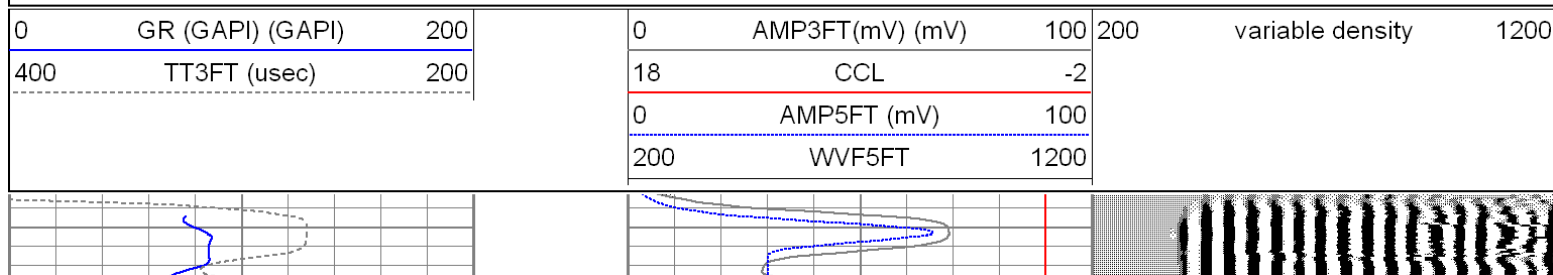


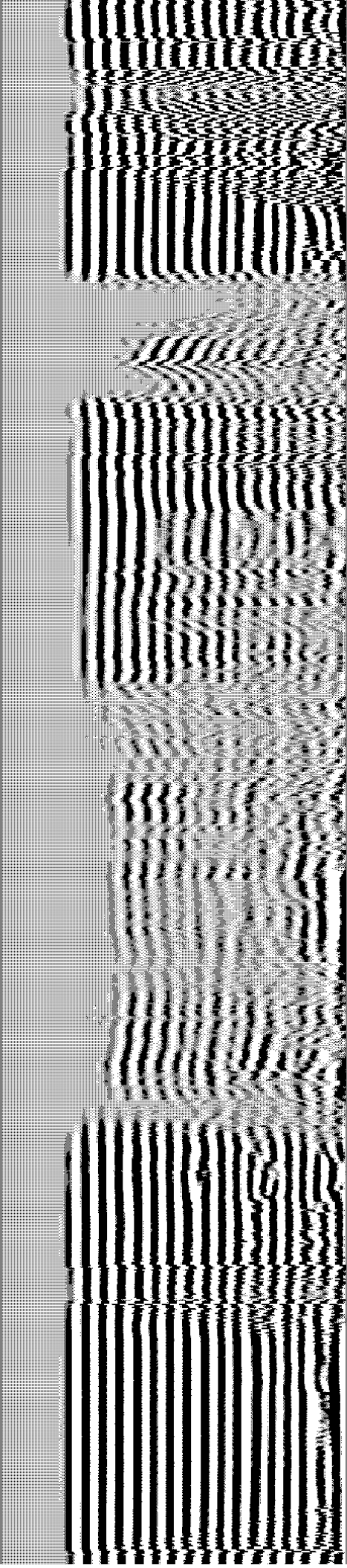
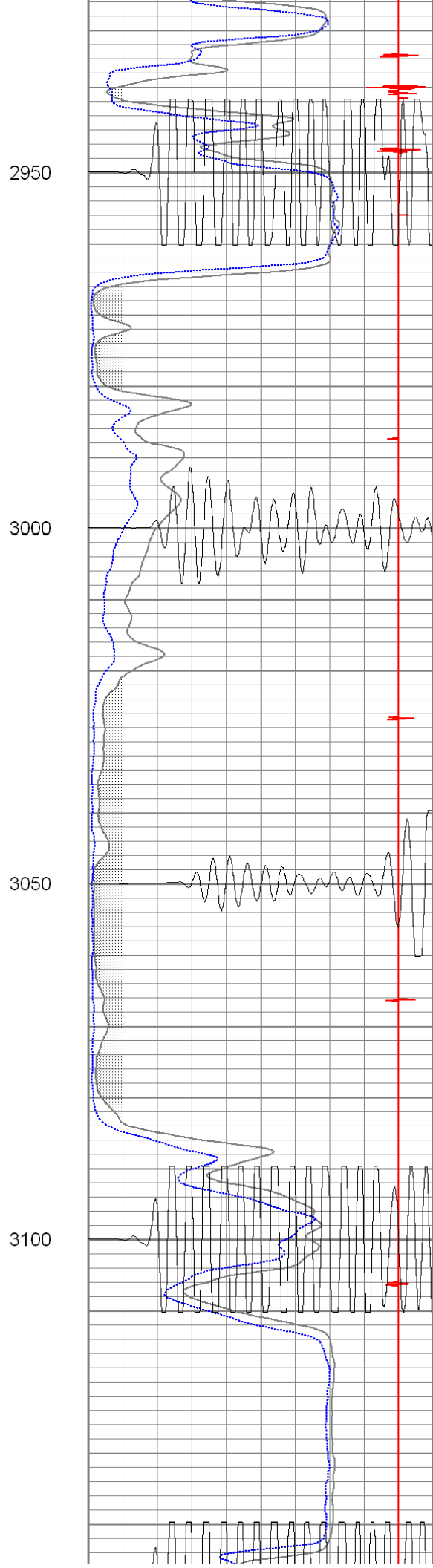
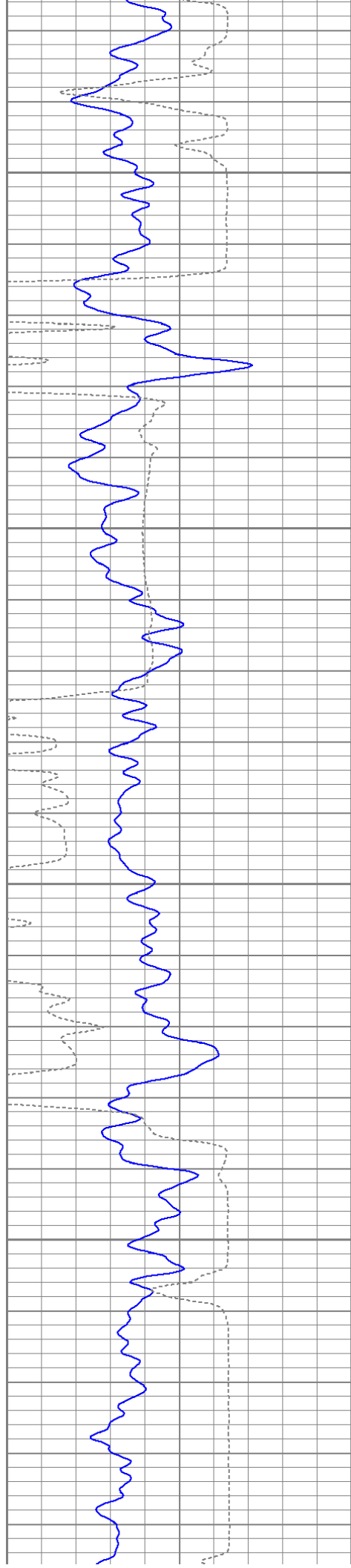


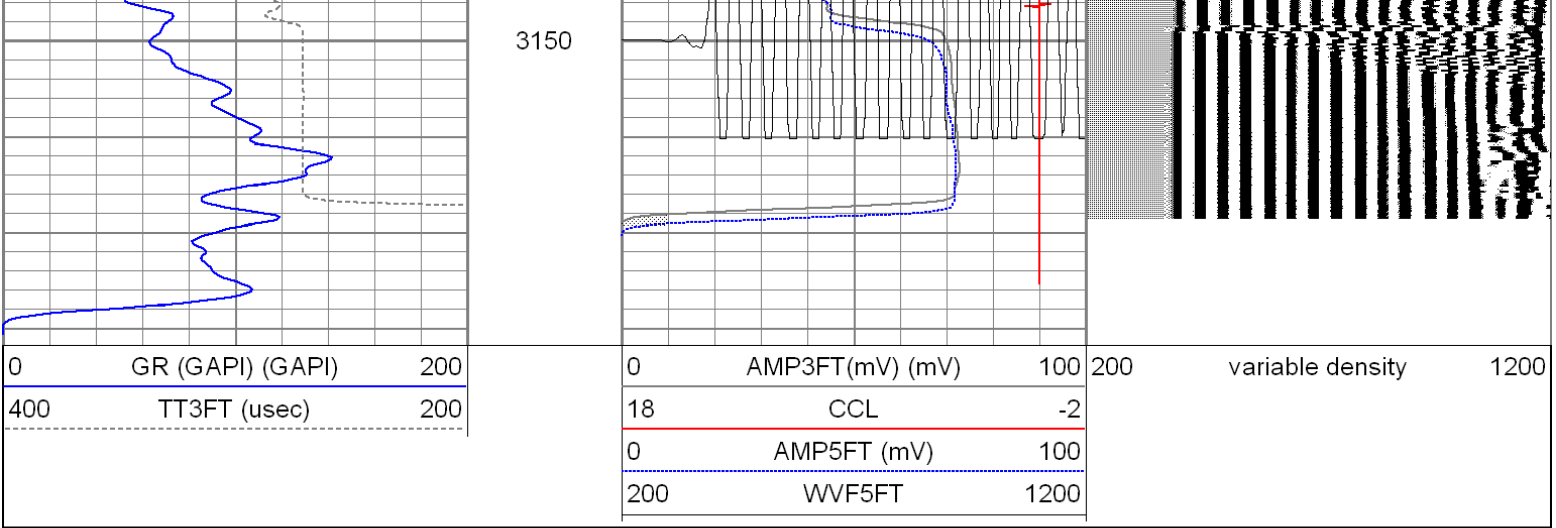


Repeat Pass

Database File: redbud121809b.db
 Dataset Pathname: pass1
 Presentation Format: cblpnr
 Dataset Creation: Fri Dec 18 15:22:45 2009 by Log Std Casedhole 09061
 Charted by: Depth in Feet scaled 1:240







Calibration Report						
Database File:		redbud121809b.db				
Dataset Pathname:		pass1				
Dataset Creation:		Fri Dec 18 15:22:45 2009 by Log Std Casedhole 09061				
Gamma Ray Calibration Report						
Serial Number:		275D_with_INC				
Tool Model:		275D_INC				
Performed:		Fri Dec 11 10:41:41 2009				
Calibrator Value:		200.0	GAPI			
Background Reading:		0.0	cps			
Calibrator Reading:		200.0	cps			
Sensitivity:		0.9950	GAPI/cps			
Inclinometer Calibration Report						
Performed:		Fri Dec 11 13:10:24 2009				
		Low Read.	High Read.	Low Ref.	High Ref.	
X Accelerometer		-3583.20	3593.60	-1.00	1.00	gee
Y Accelerometer		-3666.60	3525.20	-1.00	1.00	gee
Z Accelerometer						
Segmented Cement Bond Log Calibration Report						
Serial Number:		80553				
Tool Model:		Radii				
Calibration Casing Diameter:		5.500	in			
Calibration Depth:		3134.413	ft			
Master Calibration, performed Wed Dec 16 15:31:02 2009:						
		Raw (v)		Calibrated (mv)		Results
		Zero	Cal	Zero	Cal	Gain Offset
3'		0.021	1.743	1.000	71.921	41.176 0.152
CAL		0.020	1.534			
5'		0.020	1.731	1.000	71.921	41.472 0.152
SUM						
S1		0.021	1.583	0.800	71.921	45.514 -0.146
S2		0.021	1.699	0.800	71.921	42.371 -0.083
S3		0.021	1.615	0.800	71.921	43.227 -0.110

Dataset:	redbud121809b.db: field/well/run1/pass1
Total Length:	18.71 ft
Total Weight:	150.00 lb
O.D.	2.75 in