



SINGLE INDUCTION LOG

Company	Pioneer Natural Resources	Company	Pioneer Natural Resources
Well	Redbud 44-7	Well	Redbud 44-7
Field	Purgatorie River	Field	Purgatorie River
County	Las Animas	County	Las Animas
State	CO	State	CO
Location:	API # : 071-09697-00 459' FSL & 383' FEL	Other Services CDL	
Permanent Datum	SEC 7 TWP 32S RGE 66W	Elevation	
Log Measured From	Ground Level	K.B. 8071'	
Drilling Measured From	Kelly Bushing 9' A.G.L.	D.F. -----	
	Kelly Bushing	G.L. 8062'	
Date	12/2/09		
Run Number	one		
Depth Driller	3240'		
Depth Logger	3220'		
Bottom Logged Interval	3218'		
Top Log Interval	688'		
Casing Driller	695'		
Casing Logger	698'		
Bit Size	7 7/8"		
Type Fluid in Hole	water		
Density / Viscosity	///		
pH / Fluid Loss	///		
Source of Sample	///		
Rm @ Meas. Temp	///		
Rmf @ Meas. Temp	///		
Rmc @ Meas. Temp	///		
Source of Rmf / Rmc	///		
Rm @ BHT	///		
Time Circulation Stopped	1:00 a.m.		
Time Logger on Bottom	7:30 a.m.		
Maximum Recorded Temperature	124F		
Equipment Number	T697		
Location	Trinidad		
Recorded By	Worley		
Witnessed By	D. Berry		

<<< Fold Here >>>

All interpretations are opinions based on inferences from electrical or other measurements and we cannot and do not guarantee the accuracy or correctness of any interpretation, and we shall not, except in the case of gross or willful negligence on our part, be liable or responsible for any loss, costs, damages, or expenses incurred or sustained by anyone resulting from any interpretation made by any of our officers, agents or employees. These interpretations are also subject to our general terms and conditions set out in our current Price Schedule.

Comments

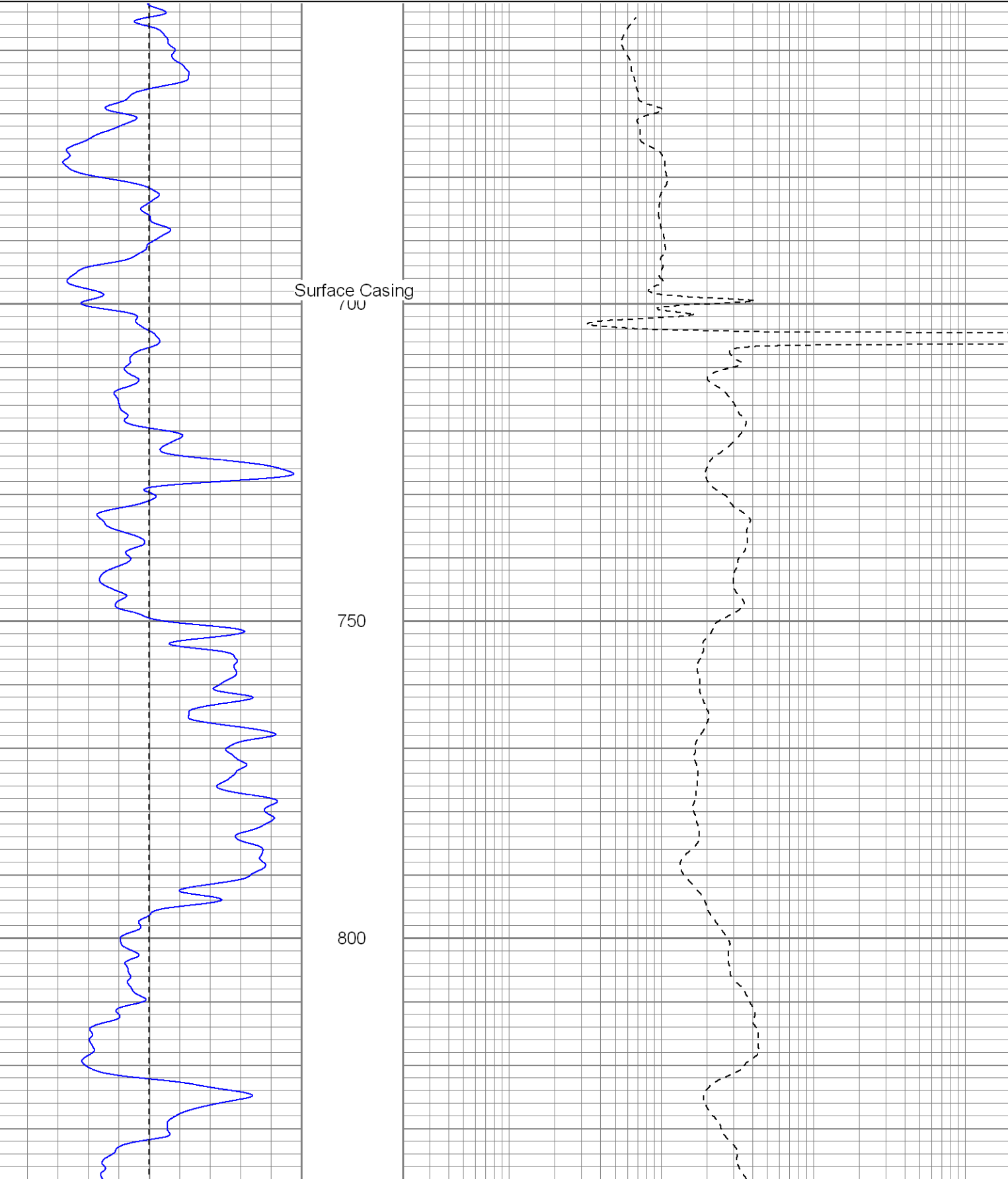
Gulnare to Jarosa Gravel Pit, up Healy Hill, stay on main road to 4-Way, go right, next right, go up hill stay on main road drive thru the Look Out Point, at Y stay left, and next Y stay right, drive thru the Vespar, at Y go left to location.

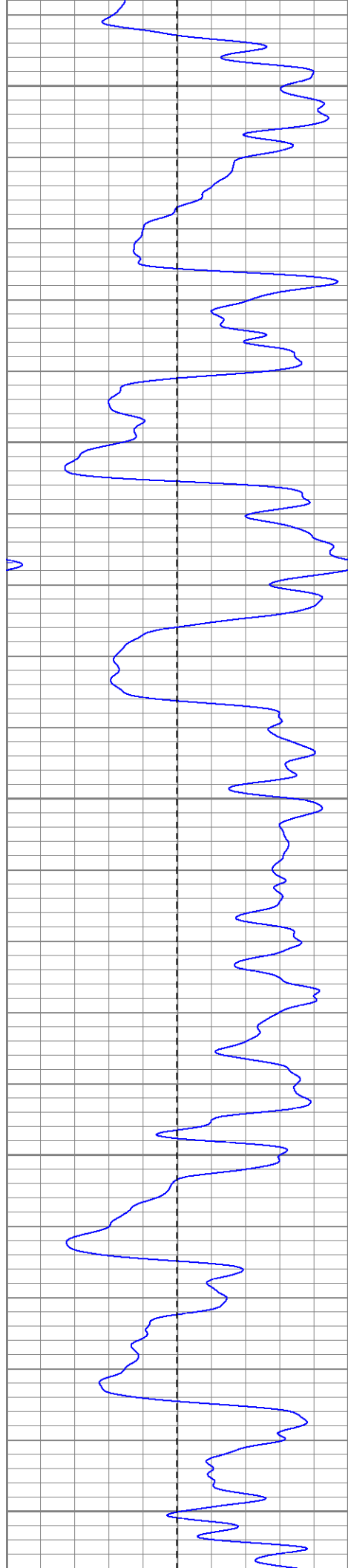


Main Pass

Database File: redbuddi.db
Dataset Pathname: pass2.1
Presentation Format: iel
Dataset Creation: Wed Dec 02 13:04:11 2009 by Calc Open-Cased 071220
Charted by: Depth in Feet scaled 1:240

0	GR (GAPI)	200	0.2	DIR (Ohm-m)	2000
-100	SP (mV)	100	0.2	SN (Ohm-m)	2000





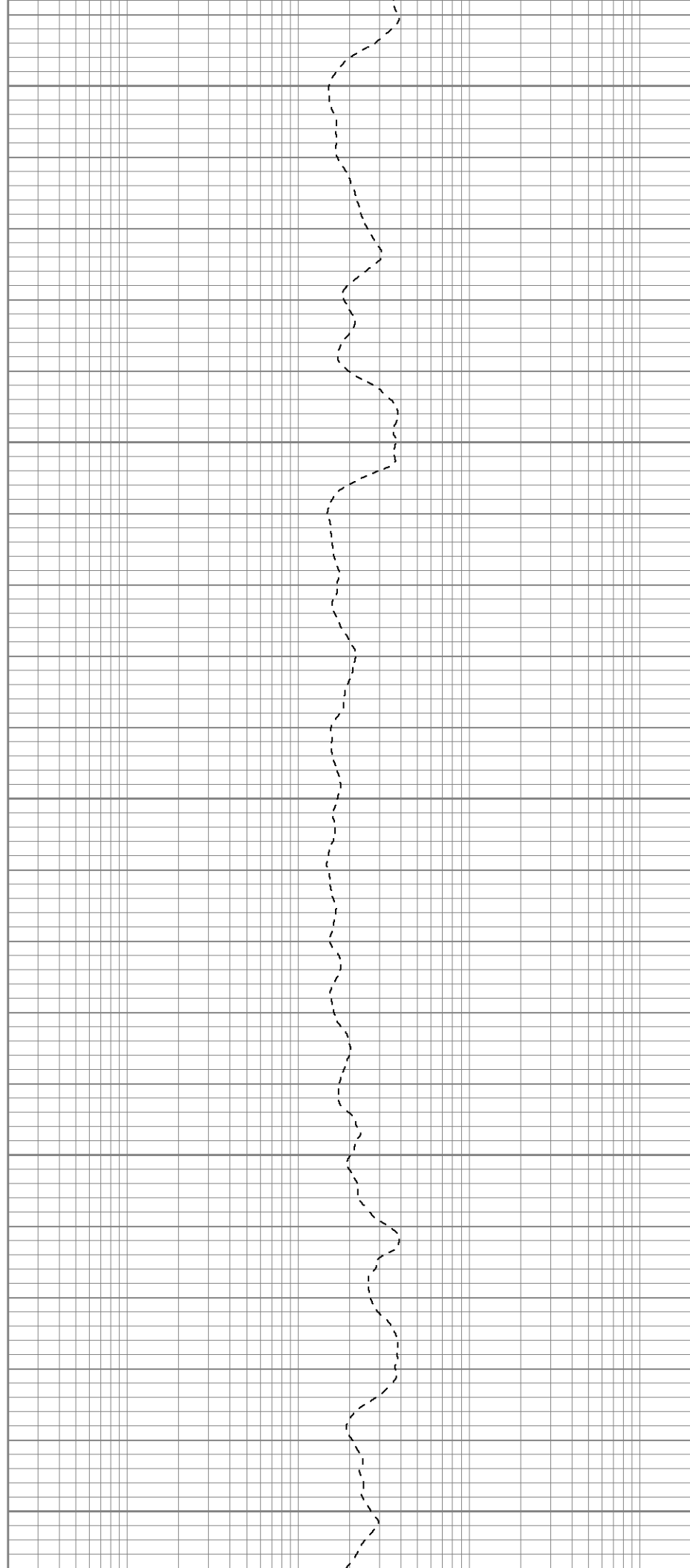
850

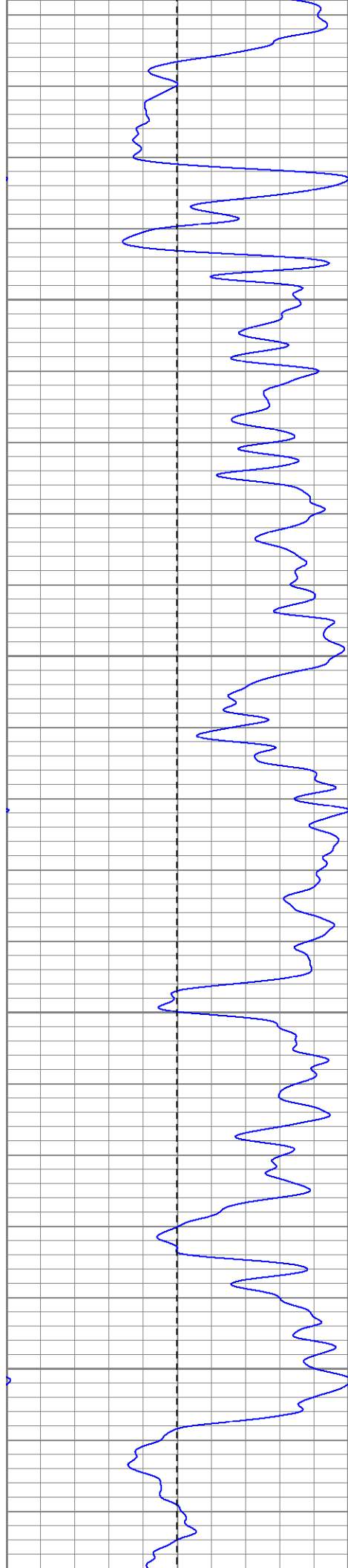
900

950

1000

1050



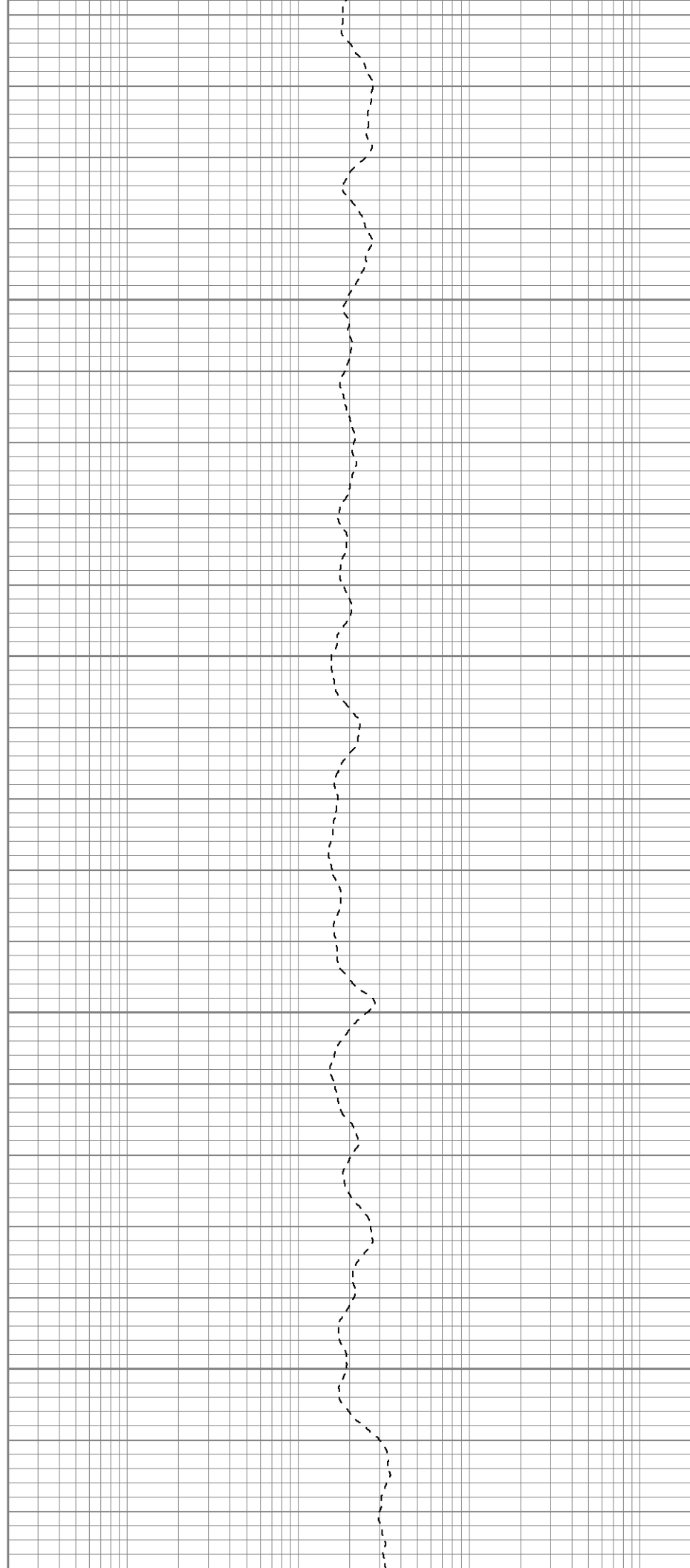


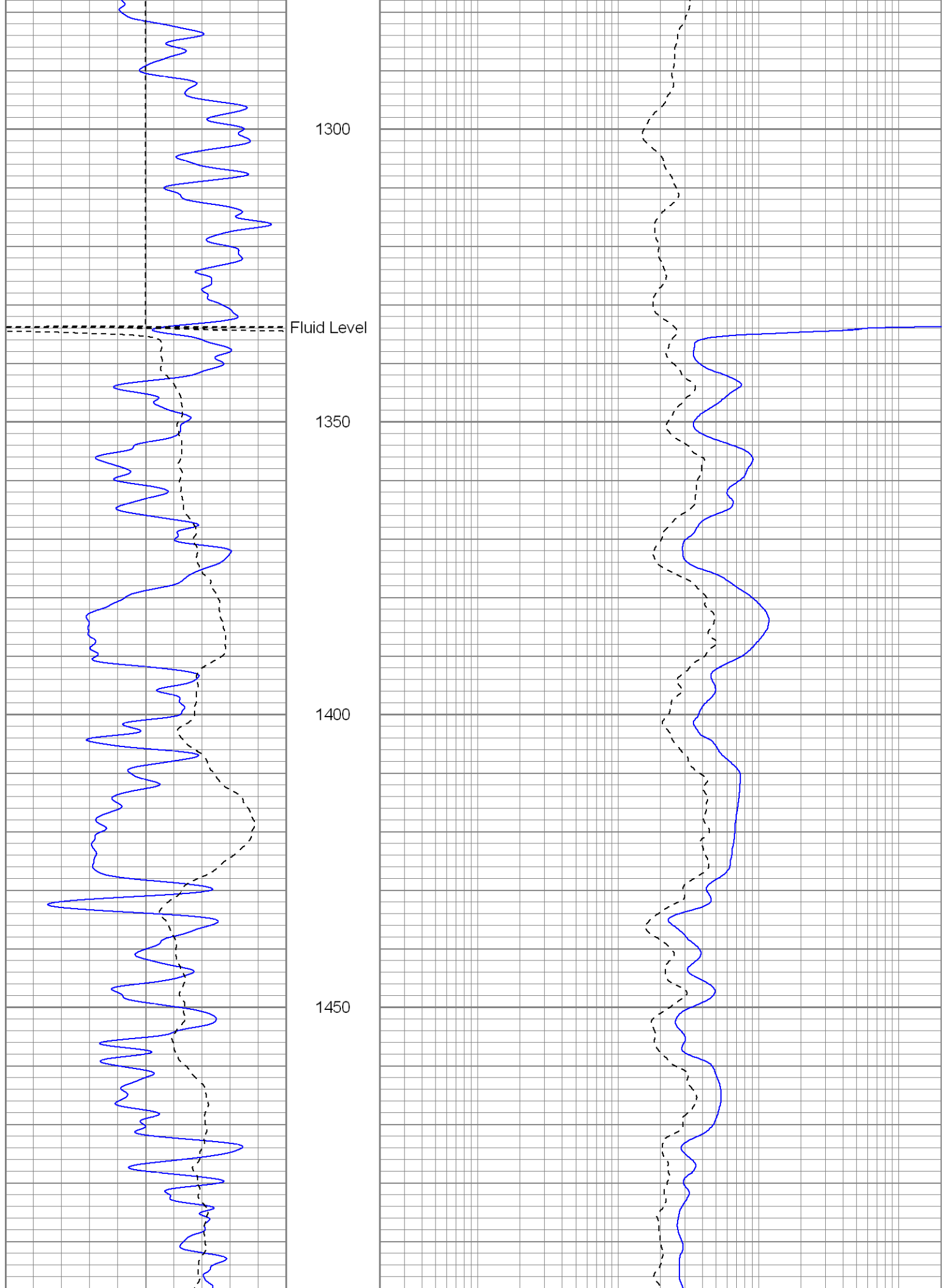
1100

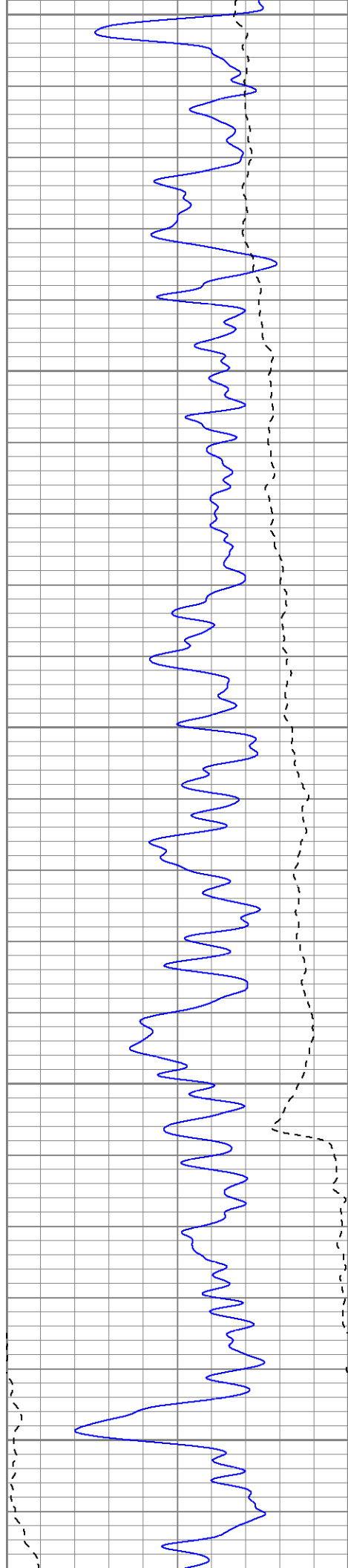
1150

1200

1250







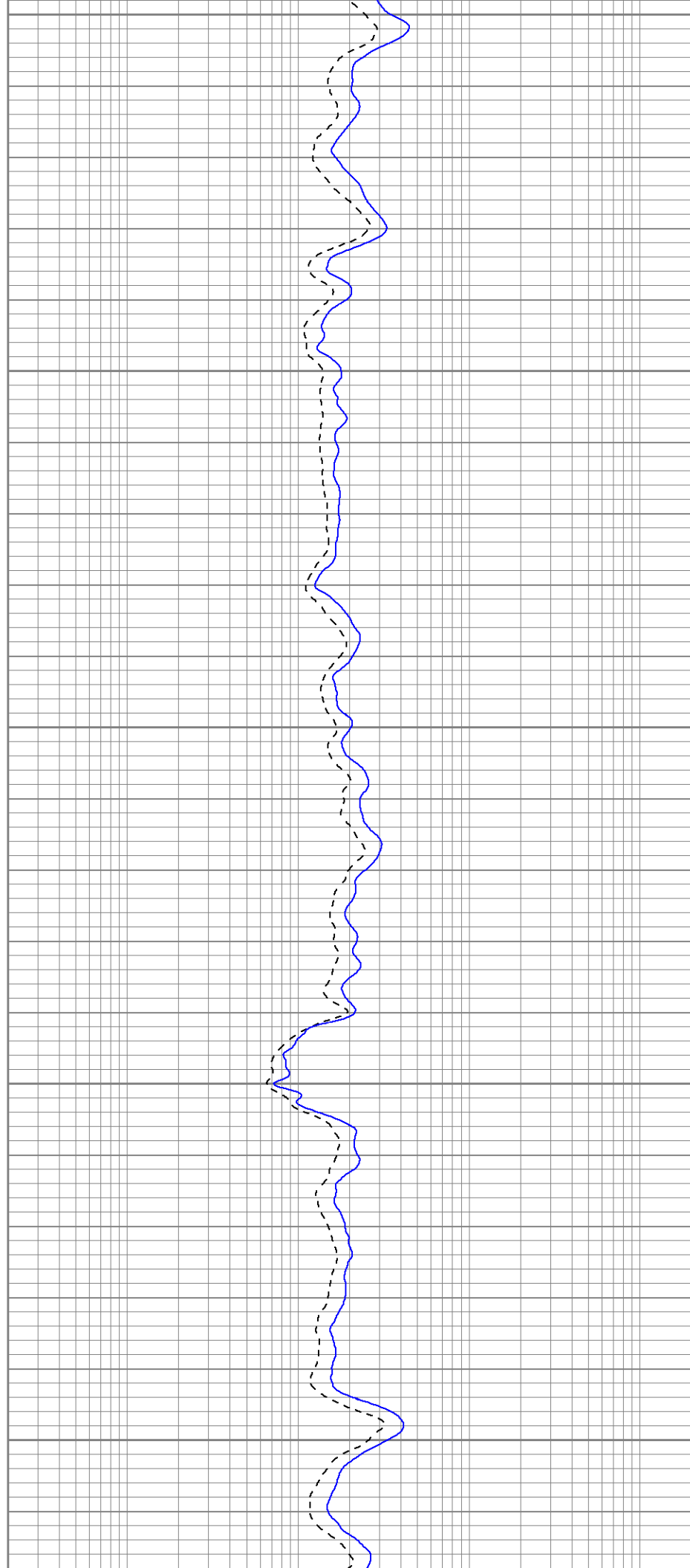
1500

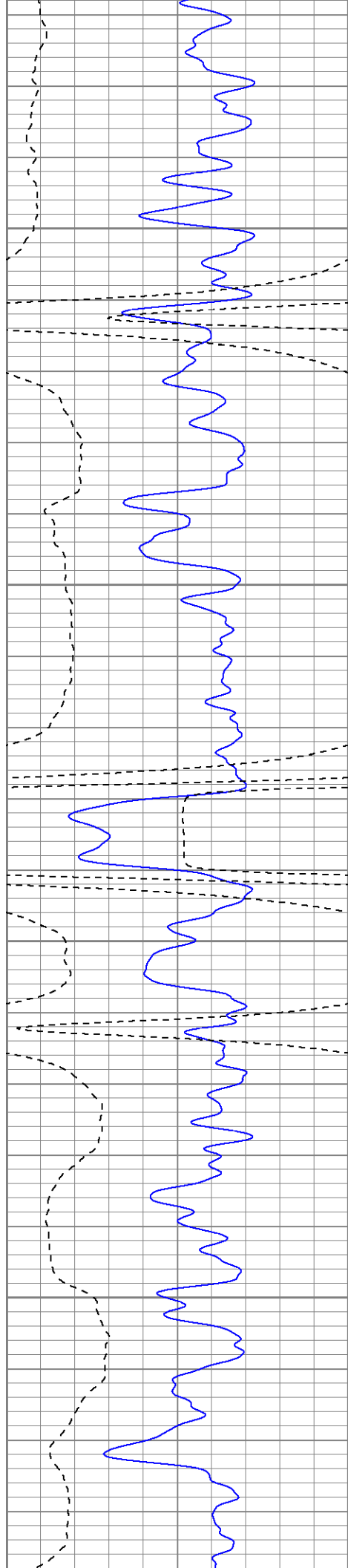
1550

1600

1650

1700



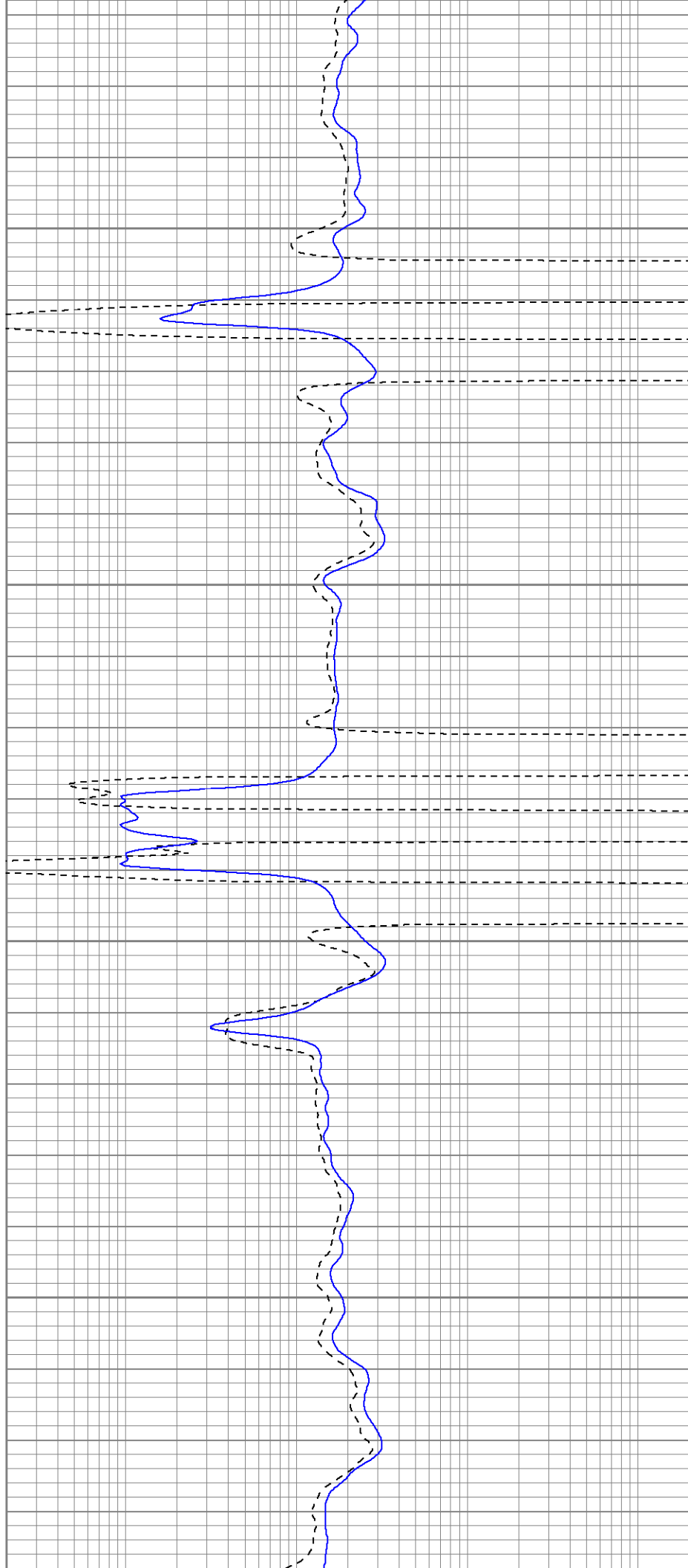


1750

1800

1850

1900





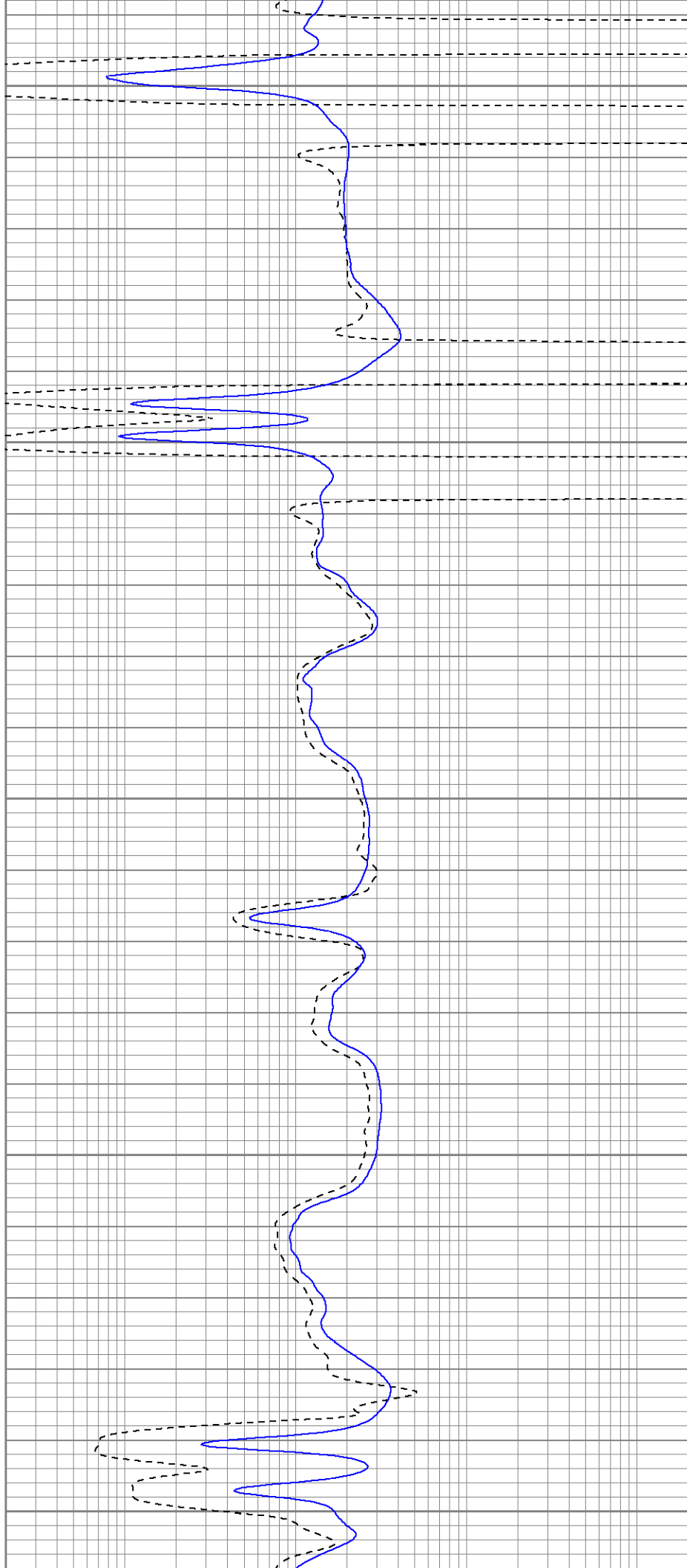
1950

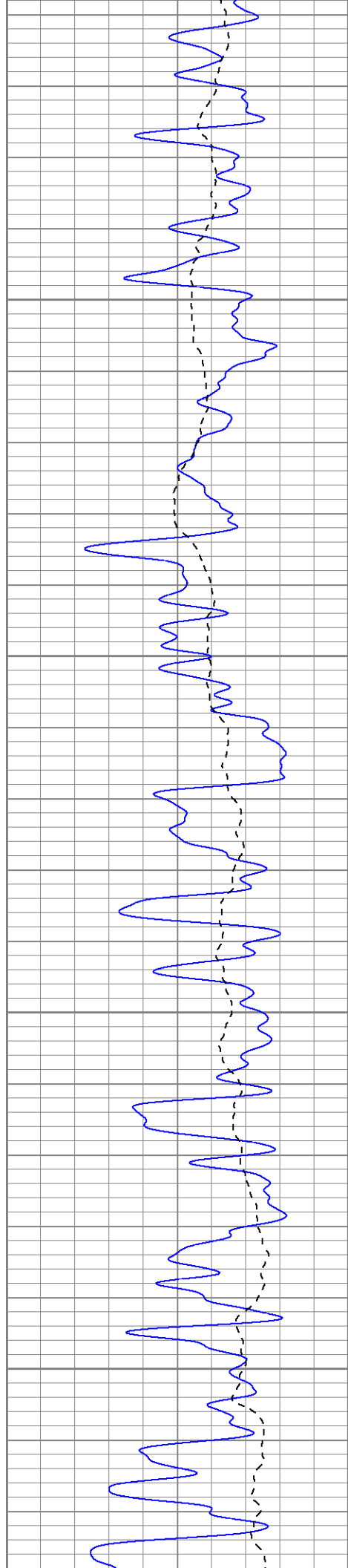
2000

2050

2100

2150



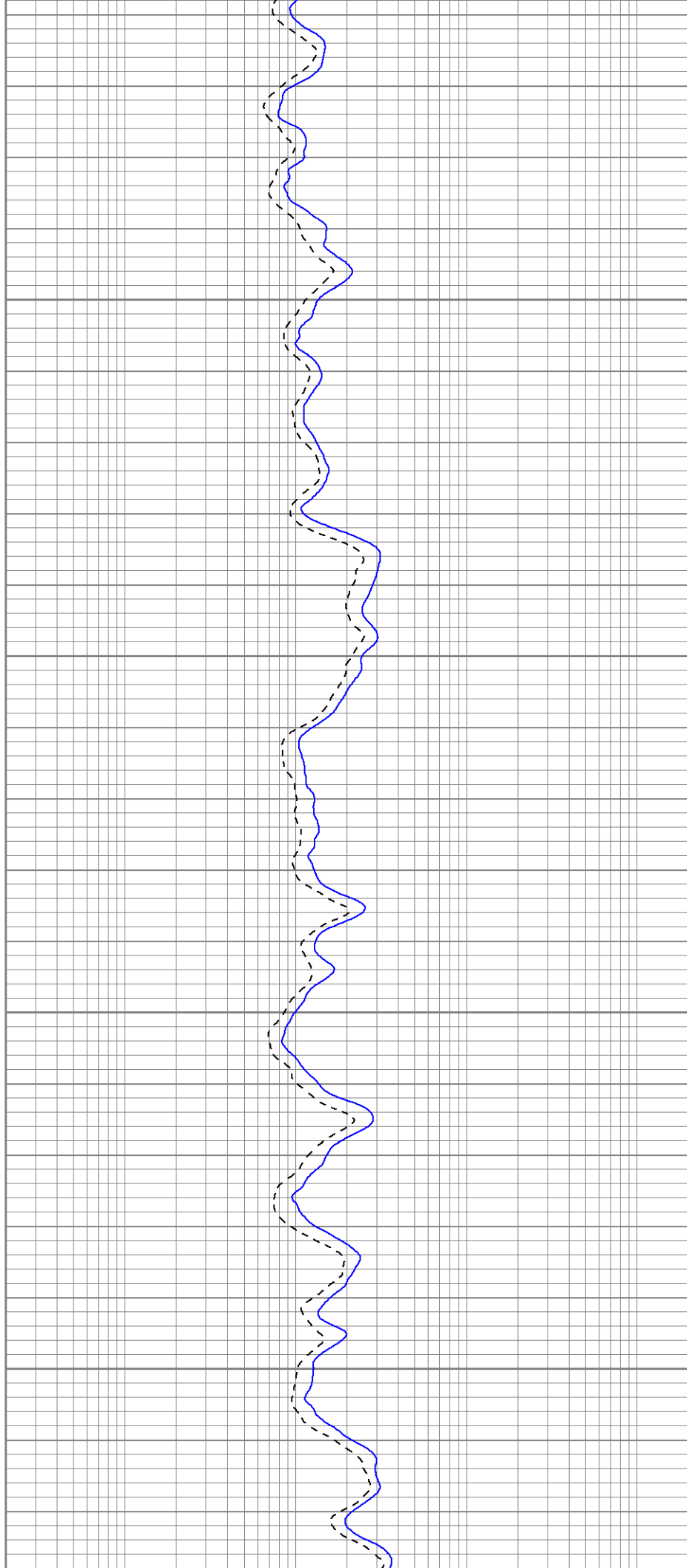


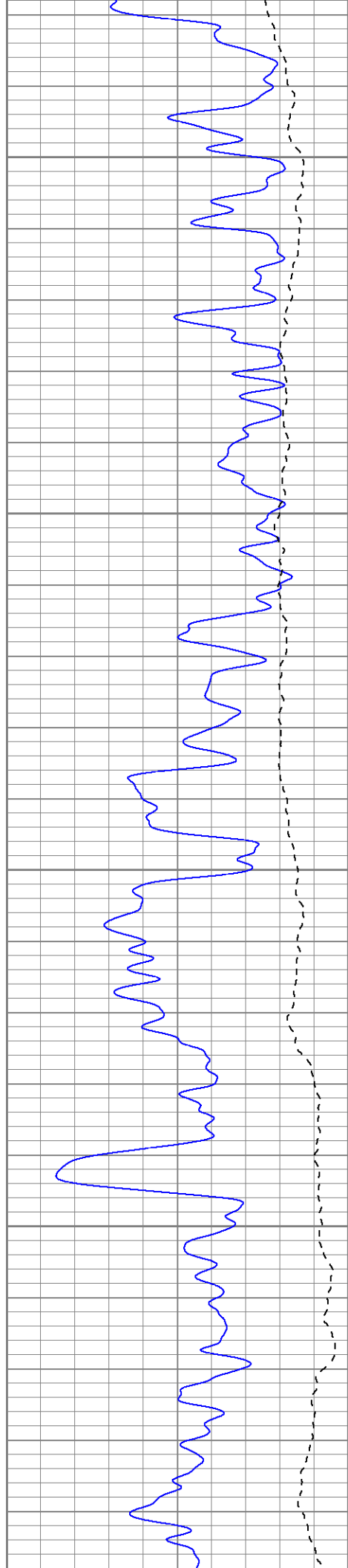
2200

2250

2300

2350



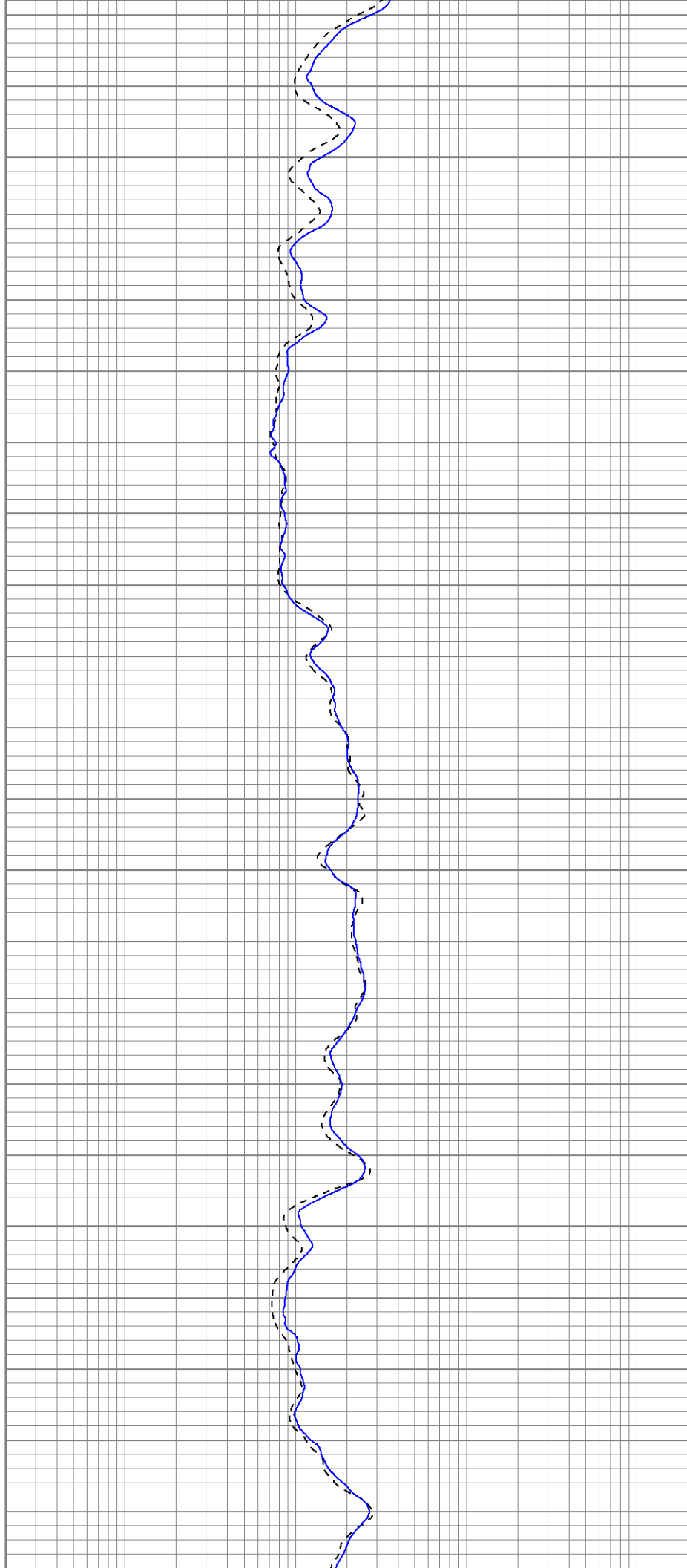


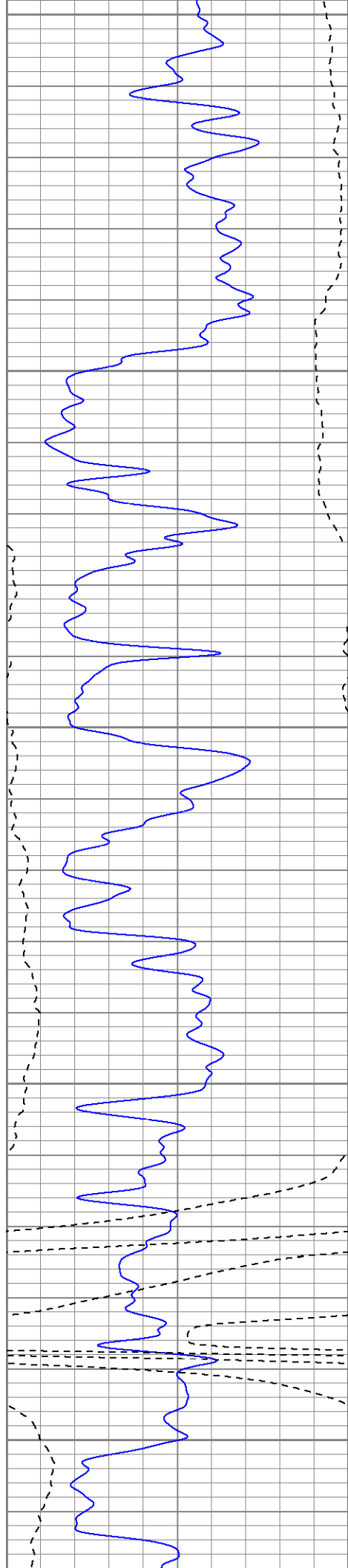
2400

2450

2500

2550





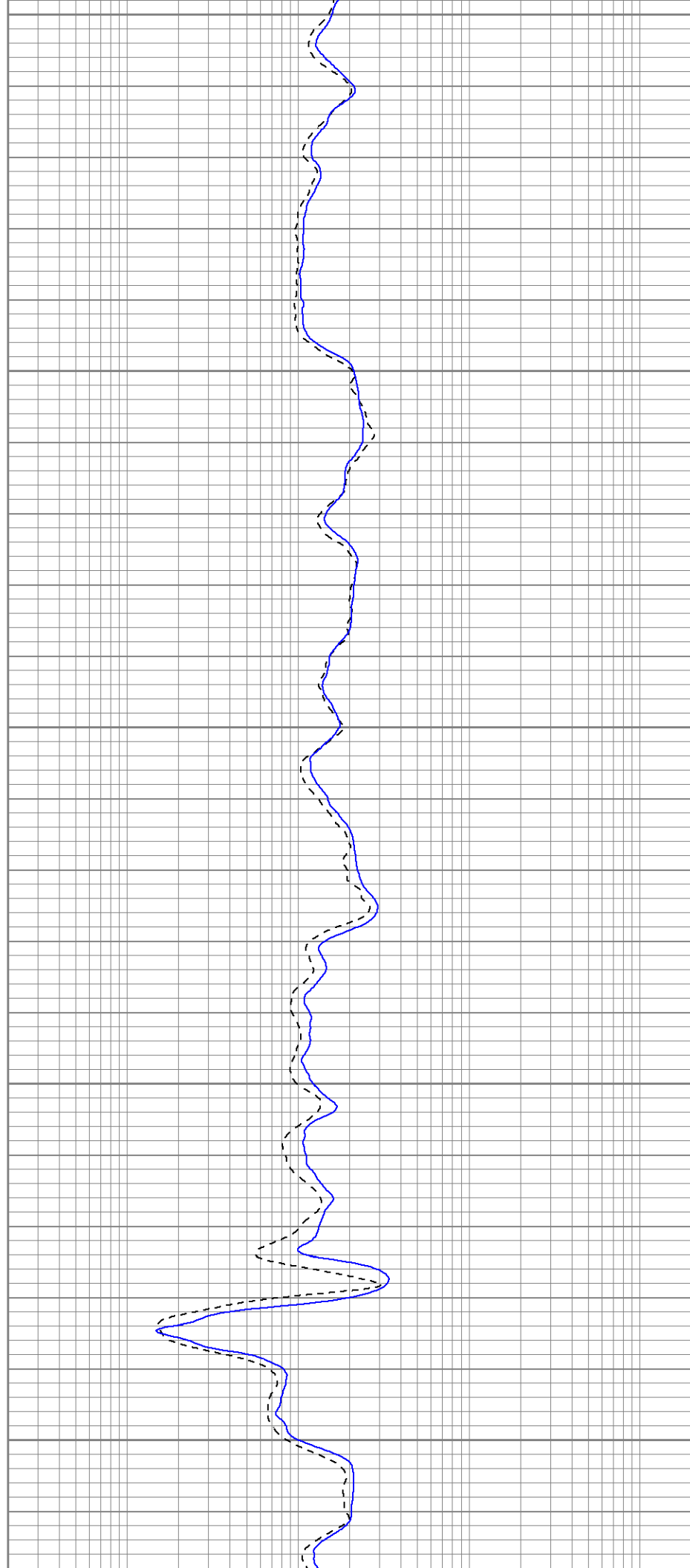
2600

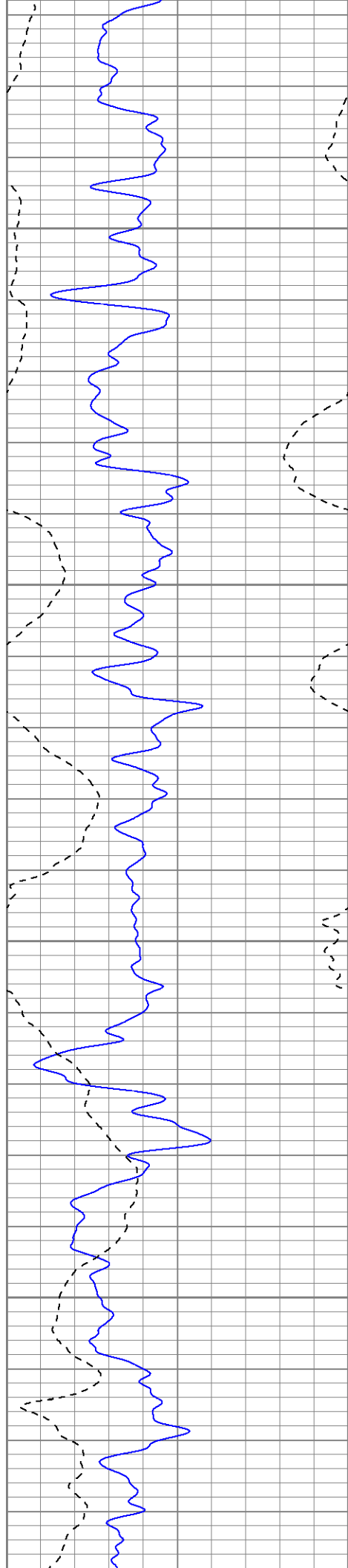
2650

2700

2750

2800



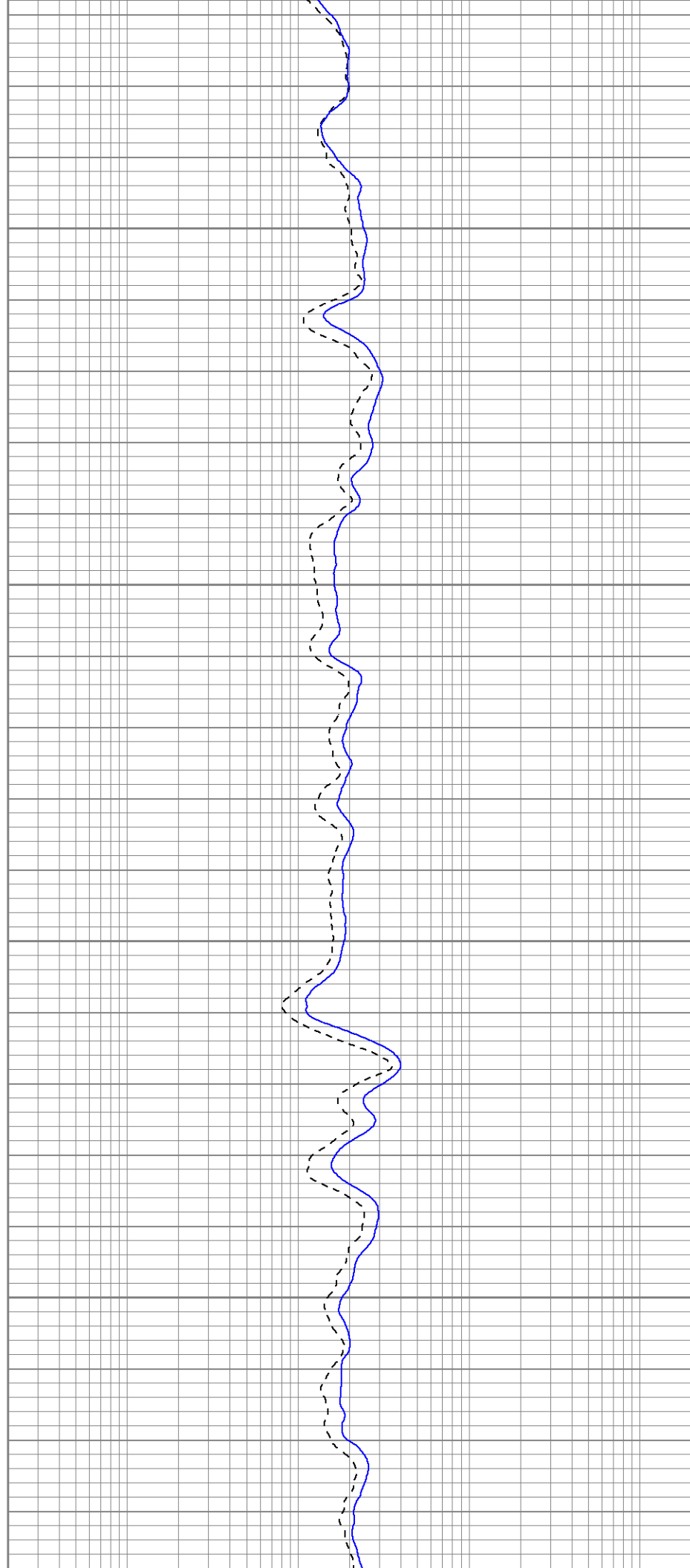


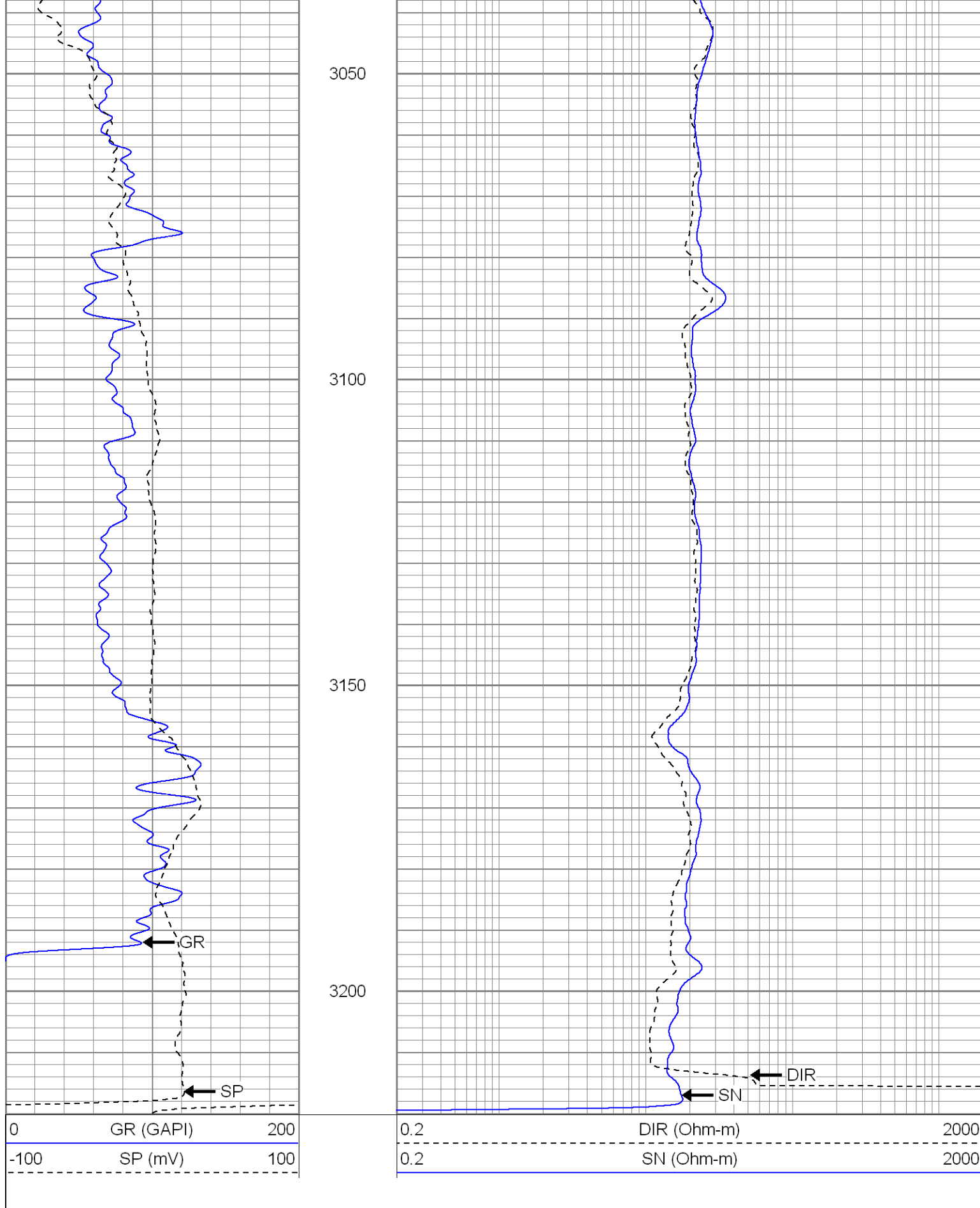
2850

2900

2950

3000



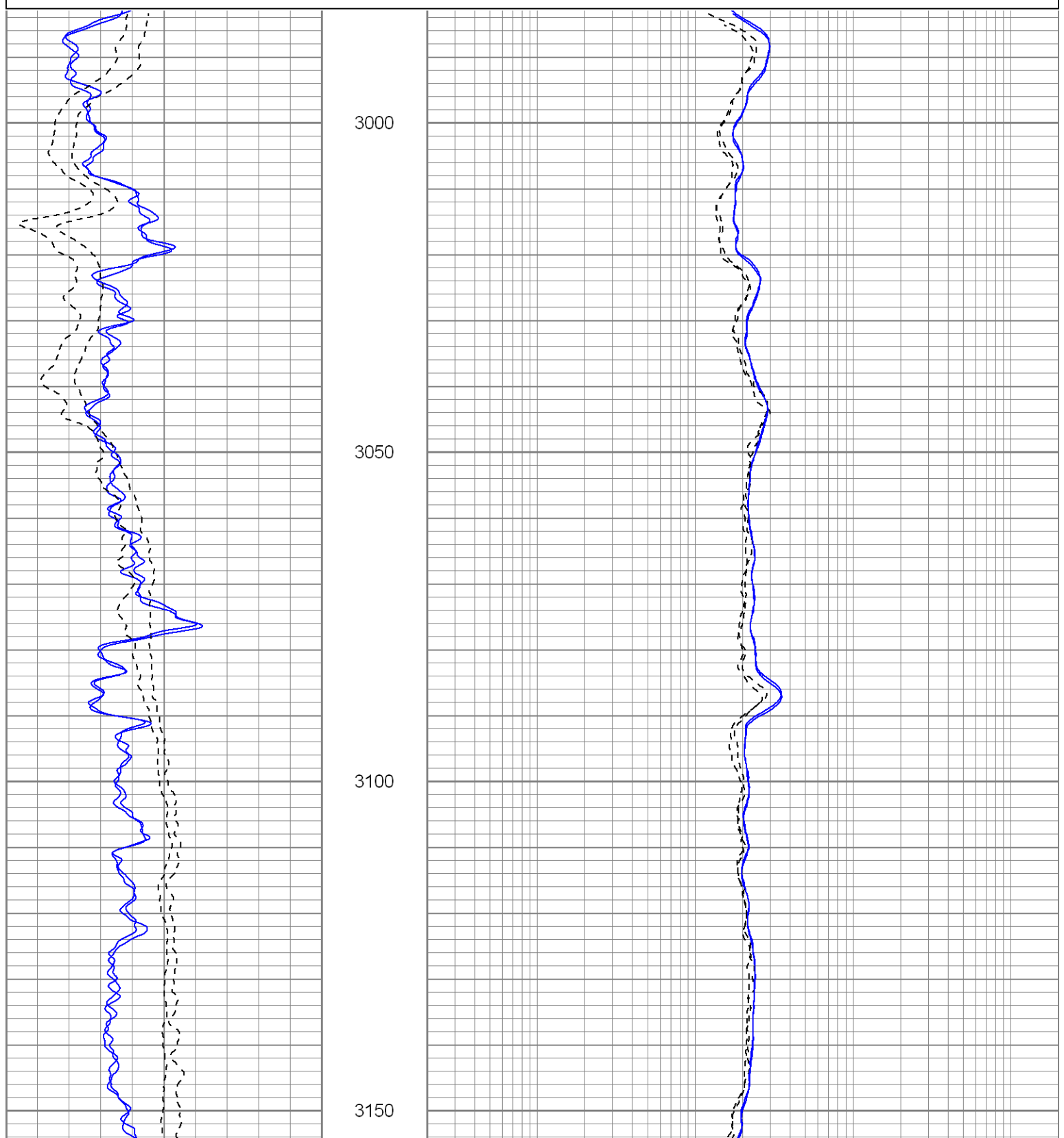


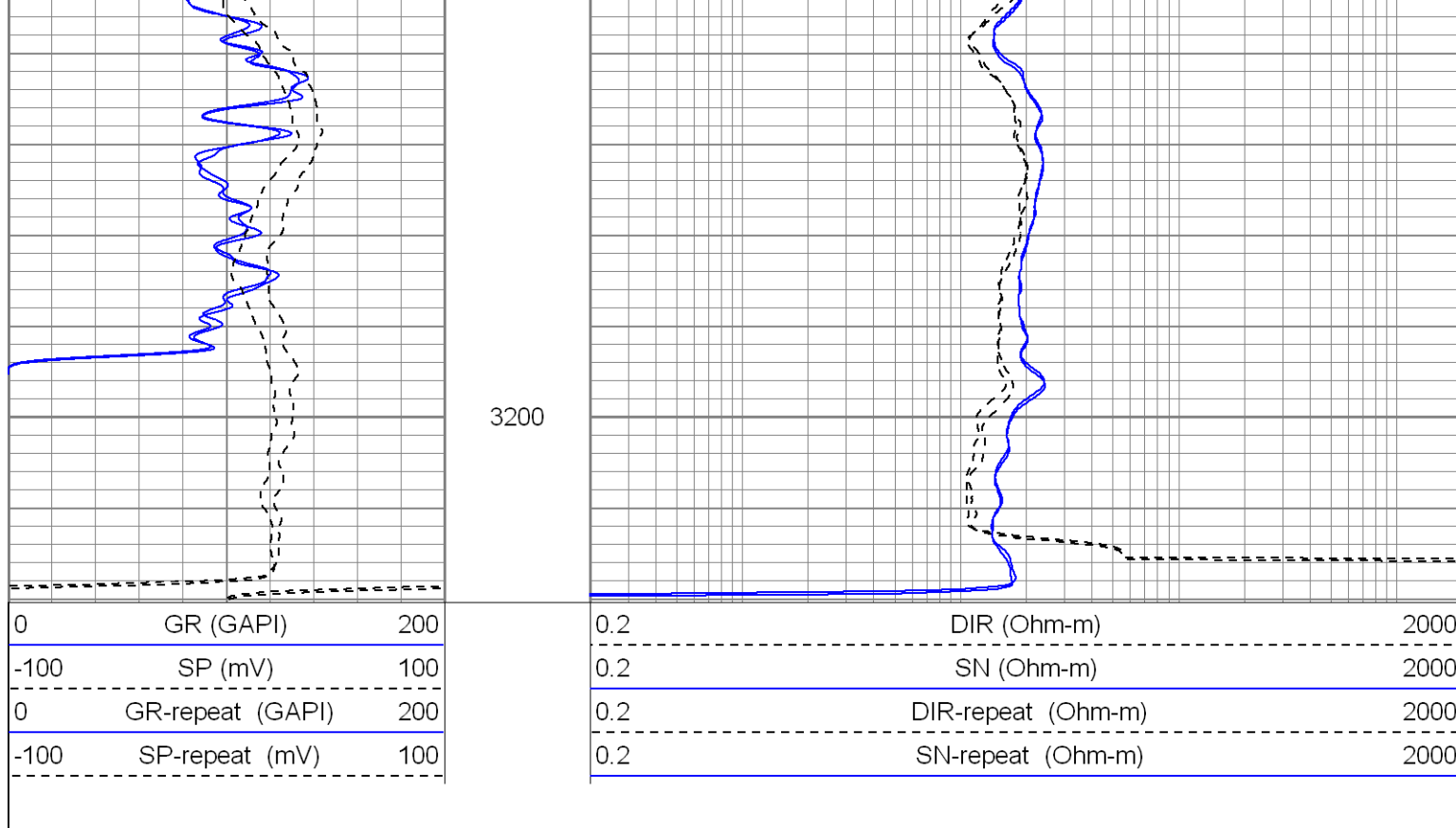
Repeat Section

WIRELINE

Database File: redbuddi.db
 Dataset Pathname: pass1.1
 Presentation Format: iel
 Dataset Creation: Wed Dec 02 13:50:23 2009 by Calc Open-Cased 071220
 Charted by: Depth in Feet scaled 1:240

0	GR (GAPI)	200	0.2	DIR (Ohm-m)	2000
-100	SP (mV)	100	0.2	SN (Ohm-m)	2000
0	GR-repeat (GAPI)	200	0.2	DIR-repeat (Ohm-m)	2000
-100	SP-repeat (mV)	100	0.2	SN-repeat (Ohm-m)	2000





Calibration Report

Database File: redbuddi.db
 Dataset Pathname: pass1
 Dataset Creation: Wed Dec 02 07:31:45 2009 by Log Open-Cased 071220

Induction Tool Calibration Report

Serial Number: 121
 Tool Model: GL121
 Downhole Cal Performed: Tue May 19 08:21:24 2009
 Surface Cal Performed: Tue May 19 08:21:24 2009
 After Survey Verification Performed:

Surface Calibration:	Air	Loop	
Conductivity Reference:	0.000	450.000	mmho
Conductivity Reading:	0.005	0.626	V
Internal Reference:	Zero	Cal	
Conductivity Reference:	0.000	500.000	mmho
Conductivity Reading:	0.009	0.631	V

Downhole Calibration:	Internal Zero	Internal Cal	
Conductivity Reference:	3.282	453.999	mmho
Conductivity Reading:	0.000	0.000	V
Short Normal Reference:	0.000	17.000	Ohm-m
Short Normal Reading:	0.000	0.192	V

Results:	Gain	Offset
Loop Conductivity:	724.756	-3.402
Downhole Correction:	1.000	0.000
Short Normal Resistivity:	70.751	-2.800

Compensated Density Calibration Report



Serial-Model: 2501DHT-DHT
 Source / Verifier: /
 Master Calibration Performed: Wed May 13 13:40:02 2009


Master Calibration

	Density		Far Detector	Near Detector	
Magnesium	1.710	g/cc	767.26	303.43	cps
Aluminum	2.590	g/cc	171.91	210.81	cps
Spine Angle = 76.32			Density/Spine Ratio = 0.572		
	Size		Reading		
Small Ring	8.00	in	6196.63		
Large Ring	14.00	in	10494.70		

Gamma Ray Calibration Report

Serial Number:	2001	
Tool Model:	OH	
Performed:	Wed May 13 14:02:54 2009	
Calibrator Value:	1.0	GAPI
Background Reading:	0.0	cps
Calibrator Reading:	1.0	cps
Sensitivity:	0.2500	GAPI/cps

Sensor	Offset (ft)	Schematic	Description	Len (ft)	OD (in)	Wt (lb)
GR	26.85		None	0.75	1.50	5.00
			GR-OH (2001) 2001	3.56	3.25	40.00
			CDL-DHT (2501DHT) Digital High Temp CDL Tool	9.69	4.00	201.00
LSD	18.31					
DCAL	18.02					
SSD	17.77					
HEADVOLT	16.00					
DIC	6.89		IEL-GL121 (121)	16.00	4.00	178.00

SP	1.50					
SN	1.00					
		Dataset: redbuddi.db: field/well/run1/pass1 Total Length: 30.00 ft Total Weight: 424.00 lb O.D. 4.00 in				