



WIRELINE SERVICES, INC.

ACOUSTIC CEMENT BOND LOG GAMMA RAY

Company INFINITY OIL & GAS Well STATE OF COLORADO 36-8-88 #4 Field WOODLEY SPRINGS County ROUTT State COLORADO	Company		INFINITY OIL & GAS						
	Well		STATE OF COLORADO 36-8-88 #4						
	Field		WOODLEY SPRINGS						
	County		ROUTT						
	State		COLORADO						
Location:		API # :		Other Services					
1731' FSL& 1851' FRWL				CCL TRANSIT TIME					
SEC 36 TWP 8N RGE 88W				Elevation					
Permanent Datum		GROUND LEVEL		Elevation 7310'					
Log Measured From		KELLY BUSHING		11'					
Drilling Measured From		KELLY BUSHING							
Date		9-9-03							
Run Number		ONE							
Depth Driller		3235'							
Depth Logger		1925'							
Bottom Logged Interval		1921'							
Top Log Interval		1500'							
Open Hole Size									
Type Fluid		WATER							
Density / Viscosity									
Max. Recorded Temp.									
Estimated Cement Top		1720'							
Time Well Ready		09:00 AM							
Time Logger on Bottom		09:30 AM							
Equipment Number		UNIT #304							
Location/Service Ticket		ROCK SPRINGS 940C							
Recorded By		BINGHAM R.							
Witnessed By		MIKE MOELLER							
Borehole Record		Tubing Record							
Run Number	Bit	From	To	Size	Weight	From	To		
Casing Record		Size		Wgt/Ft		Top		Bottom	
Surface String		9 5/8"				SURFACE		465'	
Prot. String									
Production String		5 1/2"		15.5#		SURFACE		3073'	
Liner									

All interpretations are opinions based on inferences from electrical or other measurements and we cannot and do not guarantee the accuracy or correctness of any interpretation and we shall not, except in the case of gross or willful negligence on our part, be liable or responsible for any loss, costs, damages, or expenses incurred or sustained by anyone resulting from any interpretation made by any of our officers, agents or employees. These interpretations are also subject to our general terms and conditions set out in our current Price Schedule.

Comments

POMRENKE CEMENT BOND LOG CORRELATED TO
HALLIBURTON CEMENT BOND LOG DATED 9-15-00.
CBL LOG RAN UNDER 0 PSI.
RETREAVABLE BRIDGE PLUG SET AT 1925'.

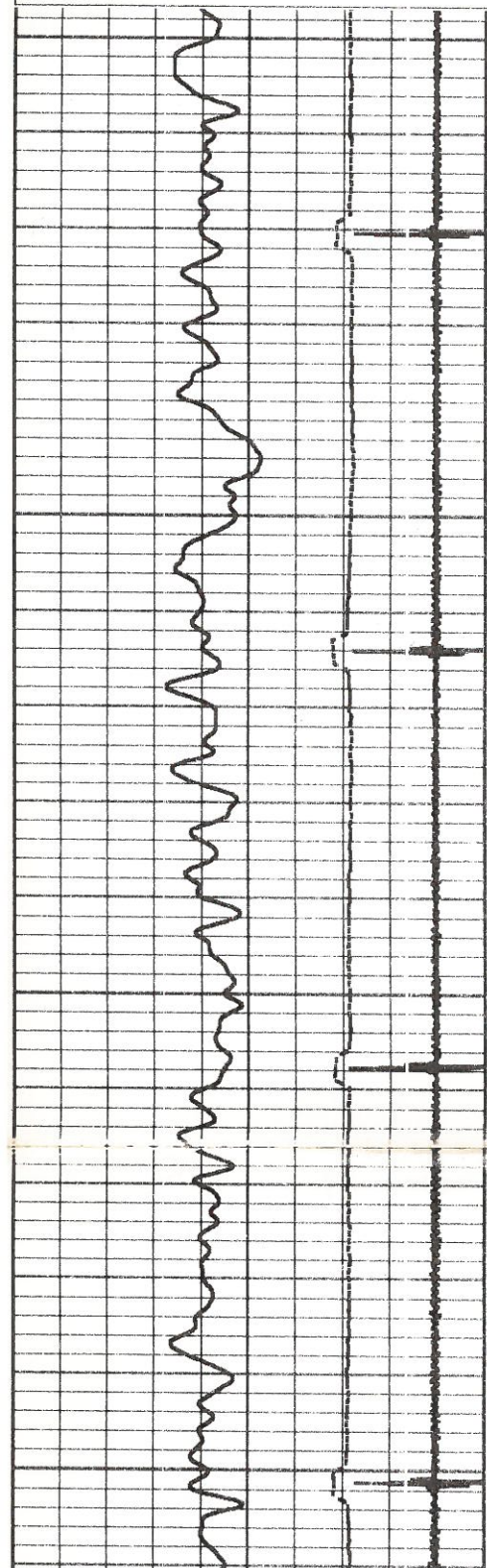
[illegible][illegible]

2000-01 2001-02 2002-03 2003-04 2004-05 2005-06 2006-07 2007-08 2008-09 2009-10 2010-11 2011-12 2012-13 2013-14 2014-15 2015-16 2016-17 2017-18 2018-19 2019-20 2020-21

[Home](#)
[Contact Us](#)
[About Us](#)
[Privacy Policy](#)
[Terms of Service](#)
[FAQ](#)
[Sitemap](#)

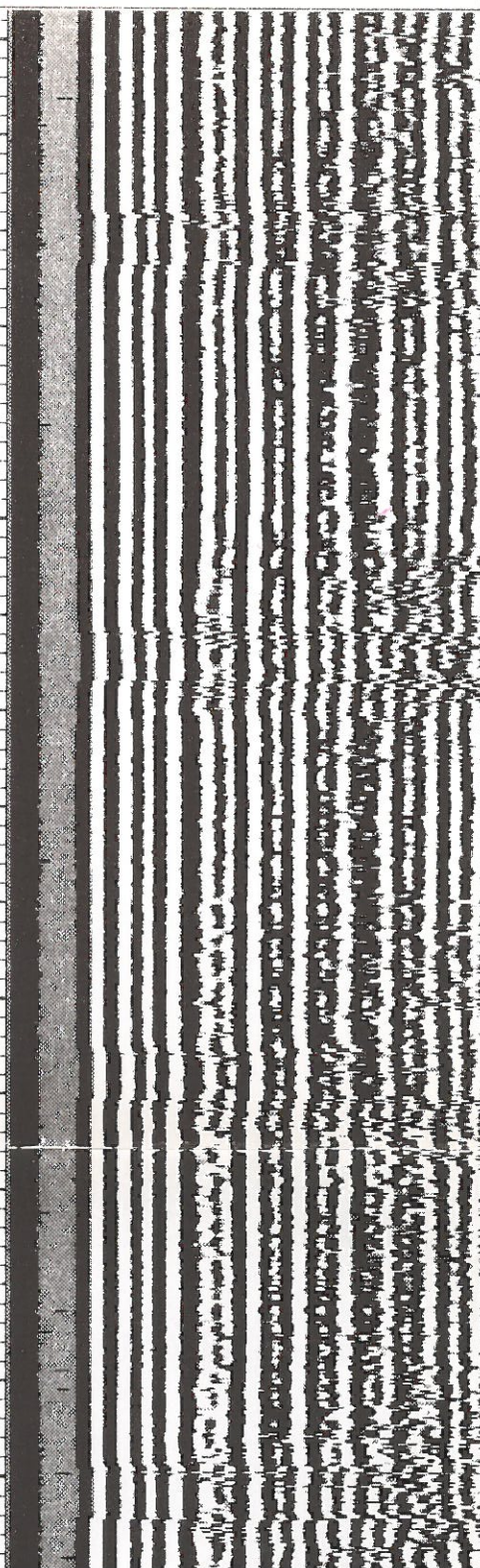
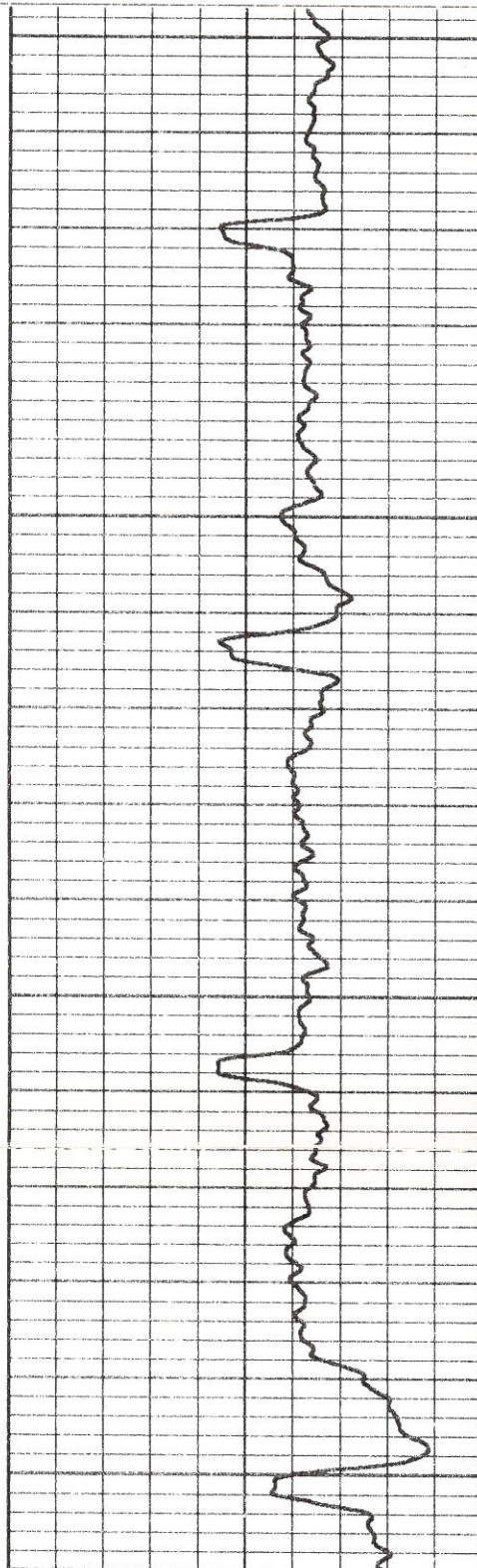
[illegible]

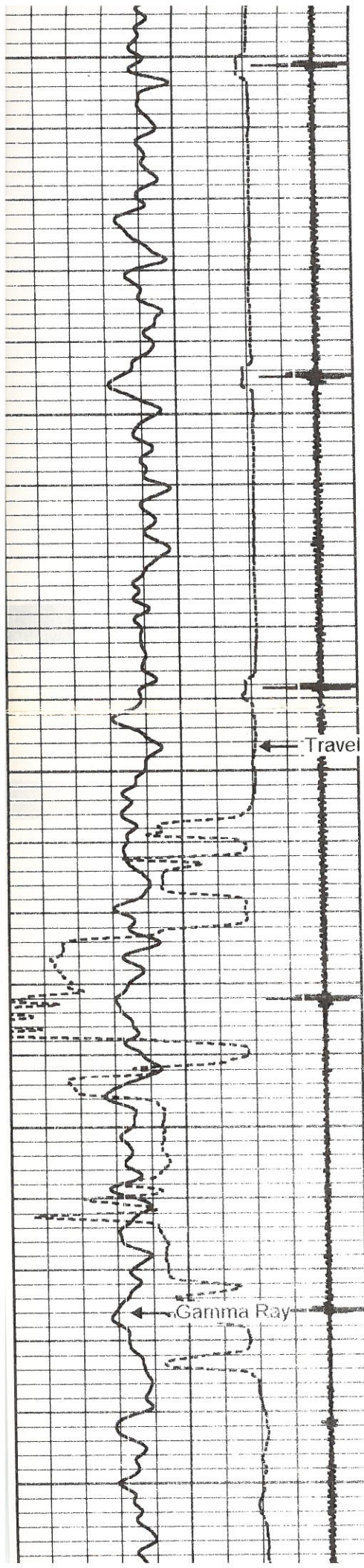
1. [Introduction](#)



1500

1600





1700

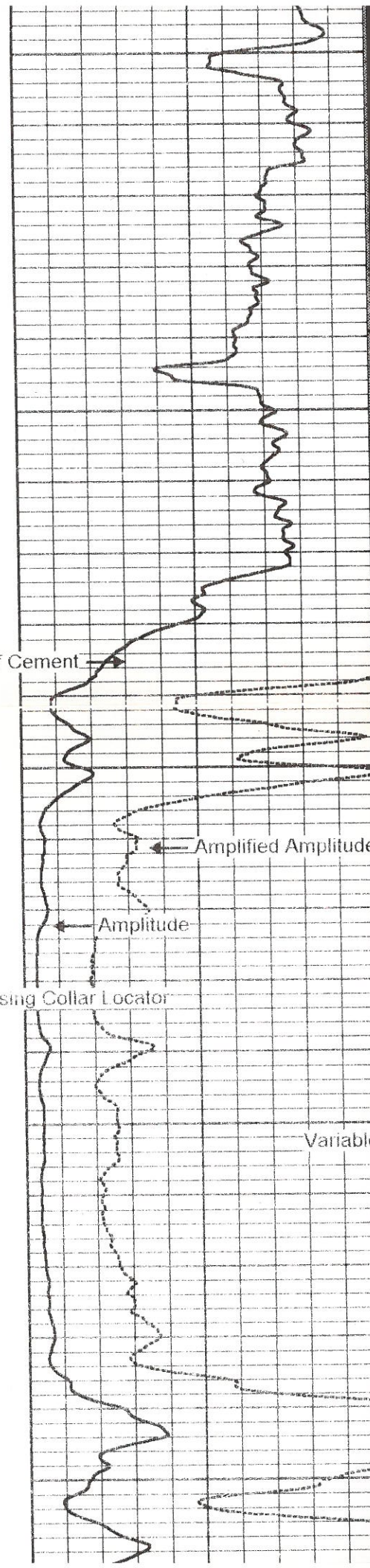
Top of Cement

Travel Time

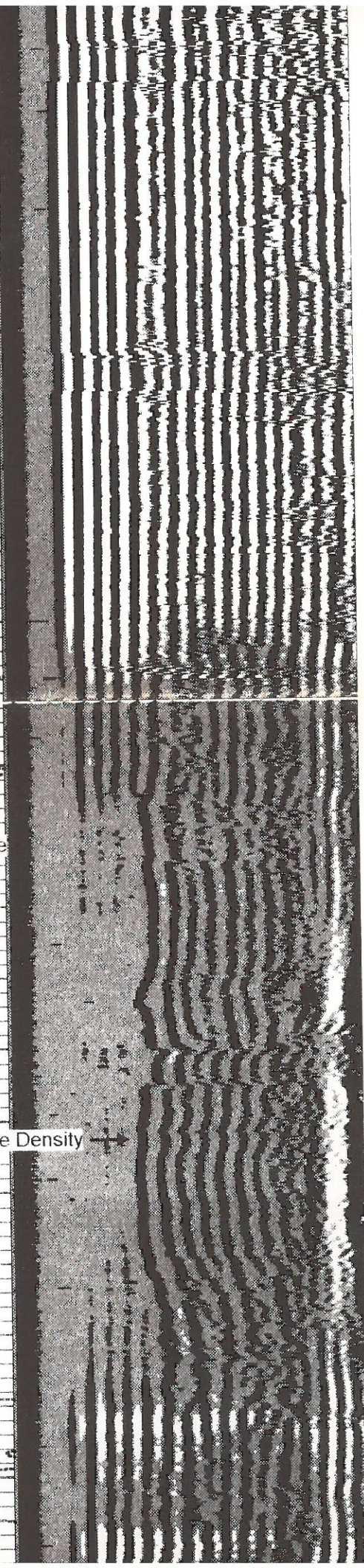
Casing Collar Locator

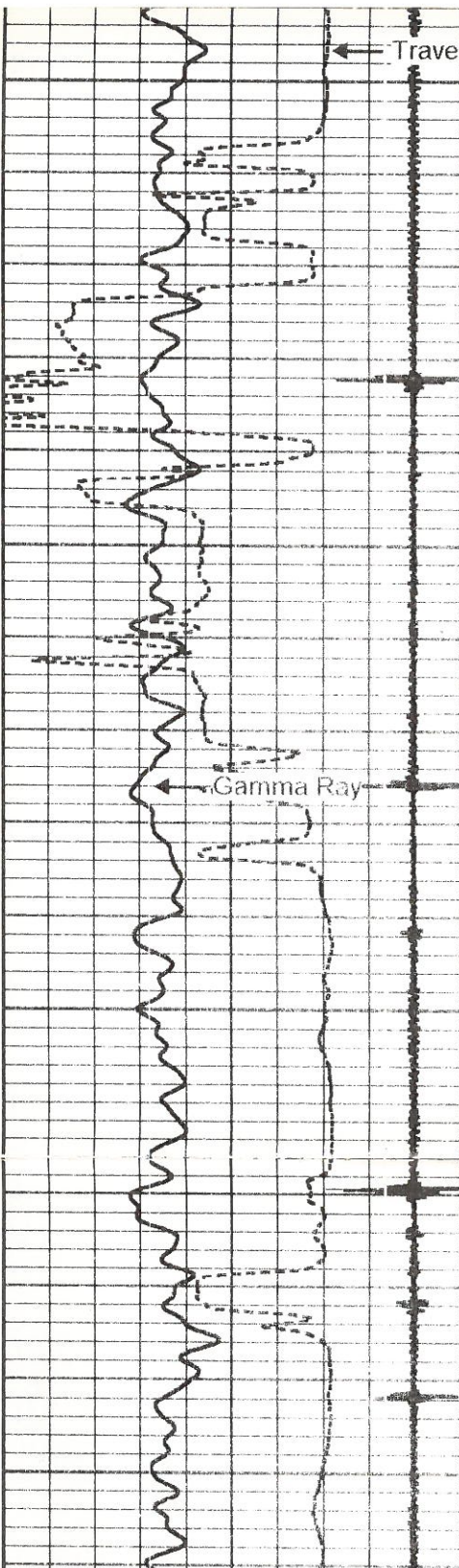
1800

Gamma Ray



Variable Density



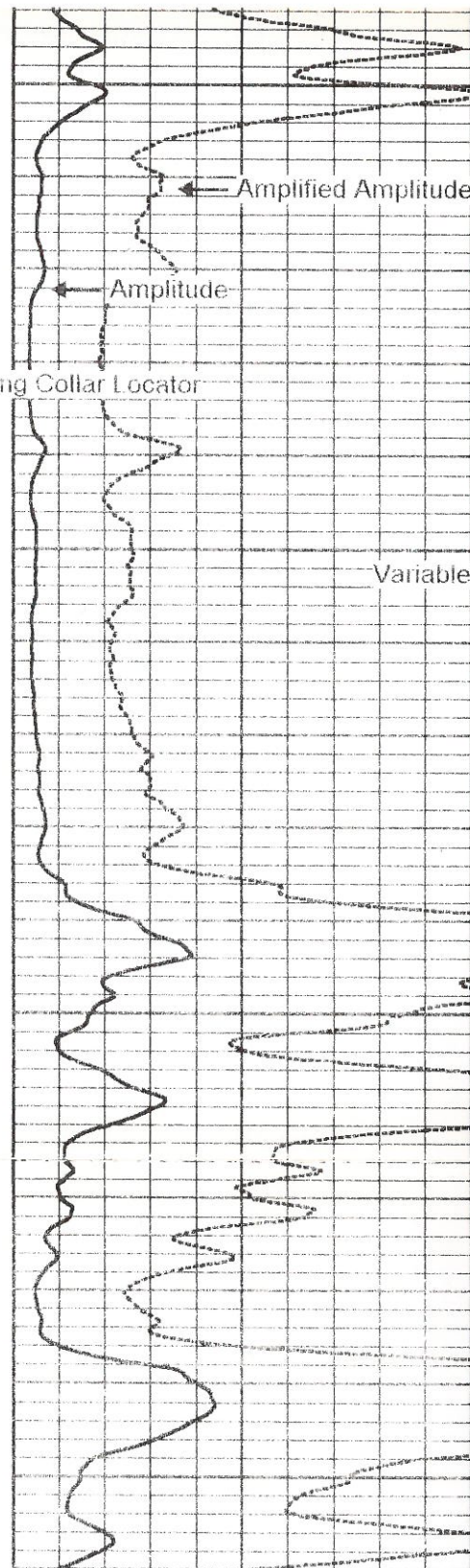


Travel Time

1800

Gamma Ray

1300



Amplified Amplitude

Amplitude

Casing Collar Locator

Variable Density

