

**BAKER  
HUGHES**



**COMPENSATED NEUTRON LOG  
GAMMA RAY LOG**

**Baker Atlas**

FILE NO: 1630  
 COMPANY: MARATHON OIL COMPANY  
 WELL: 596-29C-16  
 FIELD: GRAND VALLEY  
 COUNTY: GARFIELD  
 STATE: COLORADO

Ver. 3.87  
 PAD: 697-29C  
 LOCATION: S1/4 1761' FSL & 1395' PML  
 SEC 29 TWP 5S RGE 99W

PERMANENT DATUM: G.L. ELEVATION 8180 FT  
 LOG MEASURED FROM: K.B. 24 FT ABOVE P.D.  
 DRILL MEAS. FROM: KELLY BUSHING

OTHER SERVICES:  
 KB 8204 FT  
 DF 8203 FT  
 OL 8180 FT

DATE	11-Feb-2010
RUN	TRIP
1	1
SERVICE ORDER	5796986
DEPTH DRILLER	9726 FT
DEPTH LOGGER	9714 FT
BOTTOM LOGGED INTERVAL	9714 FT
TOP LOGGED INTERVAL	2150 FT
TIME STARTED	08:15
TIME FINISHED	12:00
OPERATOR RIG TIME	1 hr
TYPE OF FLUID IN HOLE	WATER
FLUID DENSITY	8.80 LB/G
FLUID SALINITY	NA
FLUID LEVEL	NA
LOGGED CEMENT TOP	NA
WELLHEAD PRESSURE	0 PSI
MAXIMUM HOLE DEVIATION	NA
NOMINAL LOGGING SPEED	30 F/MIN
MAX. RECORDED TEMP.	255 DEGF
REFERENCE LOG	Weatherford Open Hole
REFERENCE LOG DATE	03-OCT-2008
EQUIP. NO.	6670
LOCATION	VERNAL, UT
RECORDED BY	CUMMINGS
WITNESSED BY	NAUJ

IN MAKING INTERPRETATIONS OF LOGS OUR EMPLOYEES WILL GIVE CUSTOMER THE BENEFIT OF THEIR BEST JUDGEMENT, BUT SINCE ALL INTERPRETATIONS ARE OPINIONS BASED ON INFERENCES FROM ELECTRICAL OR OTHER MEASUREMENTS, WE CANNOT, AND WE DO NOT GUARANTEE THE ACCURACY OR CORRECTNESS OF ANY INTERPRETATION. WE SHALL NOT BE LIABLE OR RESPONSIBLE FOR ANY LOSS, COST, DAMAGES, OR EXPENSES WHATSOEVER INCURRED OR SUSTAINED BY THE CUSTOMER RESULTING FROM ANY INTERPRETATION MADE BY ANY OF OUR EMPLOYEES.

BOREHOLE RECORD		
BIT SIZE	FROM	TO
8.75 IN	0 FT	7500 FT
7.875 IN	7500 FT	8756 FT

CASING RECORD				
SIZE	WEIGHT	GRADE	FROM	TO
4.5 IN	11.6 LB/F	P-110	0 FT	8756 FT

**REMARKS**

RUN 1 TRIP 1 : DEPTH CORELATED TO OPEN HOLE LOG DONE ON 03-OCT-2008  
 CN RAN FREE DUE TO CASING SIZE  
 CREW: ROBERTSON/ MCCORMICK  
 THANK YOU FOR CHOOSING BAKER ATLAS

EQUIPMENT DATA					
RUN	TRIP	TOOL	SERIES NO.	SERIAL NO.	POSITION

1	1	CCL	2334A	101114233	FREE
1	1	TMA	2880A	10380720	FREE
1	1	TEL/GR	3518A	10061345	FREE
1	1	CN	2436A	10124388	FREE

## MAIN LOG 5"/100FT SCALE

ECLIPS 6.01 Feb 21, 2008  
 Updates: 1,40,41 Patches: 1,2,4,5,6

Fri Feb 12 11:54:14 2010

Perplf /main/62

Cplot

Pdf\_Cpp /main/16

Fileview 5.42

### PARAMETER AND FILTER SUMMARY REPORT

FILE: /dat1a/1830/k970a1e07.prm  
 LOGGING MODE: DEPTH DIRECTION: UP  
 TOP DEPTH: 2089.500 ft BOTTOM DEPTH: 2303.195 ft

#### SYMMETRIC FILTER

MEASUREMENT TYPE	PARAMETER	VALUE	UNITS	INTERVAL (ft)	
GR LOW RES	FILTER (.1)	medium (1)		TOP	BOTTOM
GR MED RES	FILTER ()	medium (1)		"	"
TENSION	FILTER ()	medium (1)		"	"
CN LOW RES	FILTER (.1)	medium (1)		"	"
CN MED RES	FILTER ()	medium (1)		"	"

#### BOREHOLE & CEMENT

MEASUREMENT TYPE	PARAMETER	VALUE	UNITS	INTERVAL (ft)	
CASINO - BOREHOLE & CEMENT VOLUME	CASINO O.D.	4.500	1in	TOP	BOTTOM
	CASINO THICKNESS	0.250	1in	"	"
BIT SIZE	BIT SIZE	8.750	1in	"	"
BOREHOLE CORR DIAMETER SOURCE	CALIPER/FIXED DIA. (cnbh*)	USE FIXED SIZE		"	"
BOREHOLE CORR DIAMETER	FIXED DIAMETER (cnbh*)	8.750	1in	"	"

#### ACCELERATION PROCESSING

MEASUREMENT TYPE	PARAMETER	VALUE	UNITS	INTERVAL (ft)	
ACCEL CORR SWITCH	ACCEL DEPTH CORR	CORRECTION ON		TOP	BOTTOM

#### CN PROCESSING

MEASUREMENT TYPE	PARAMETER	VALUE	UNITS	INTERVAL (ft)	
CN MATRIX	2436 MATRIX	SANDSTONE		TOP	BOTTOM
CN BOREHOLE CORRECTION	SALINITY	861	ppm	"	"
	BOREHOLE CORRECTION	CN		"	"
CN CASING & CEMENT CORRECTION	CORRECTION	CN		"	"
	BIT SIZE BEHIND CSNO	8.750	1in	"	"

### CURVE DESCRIPTION REPORT

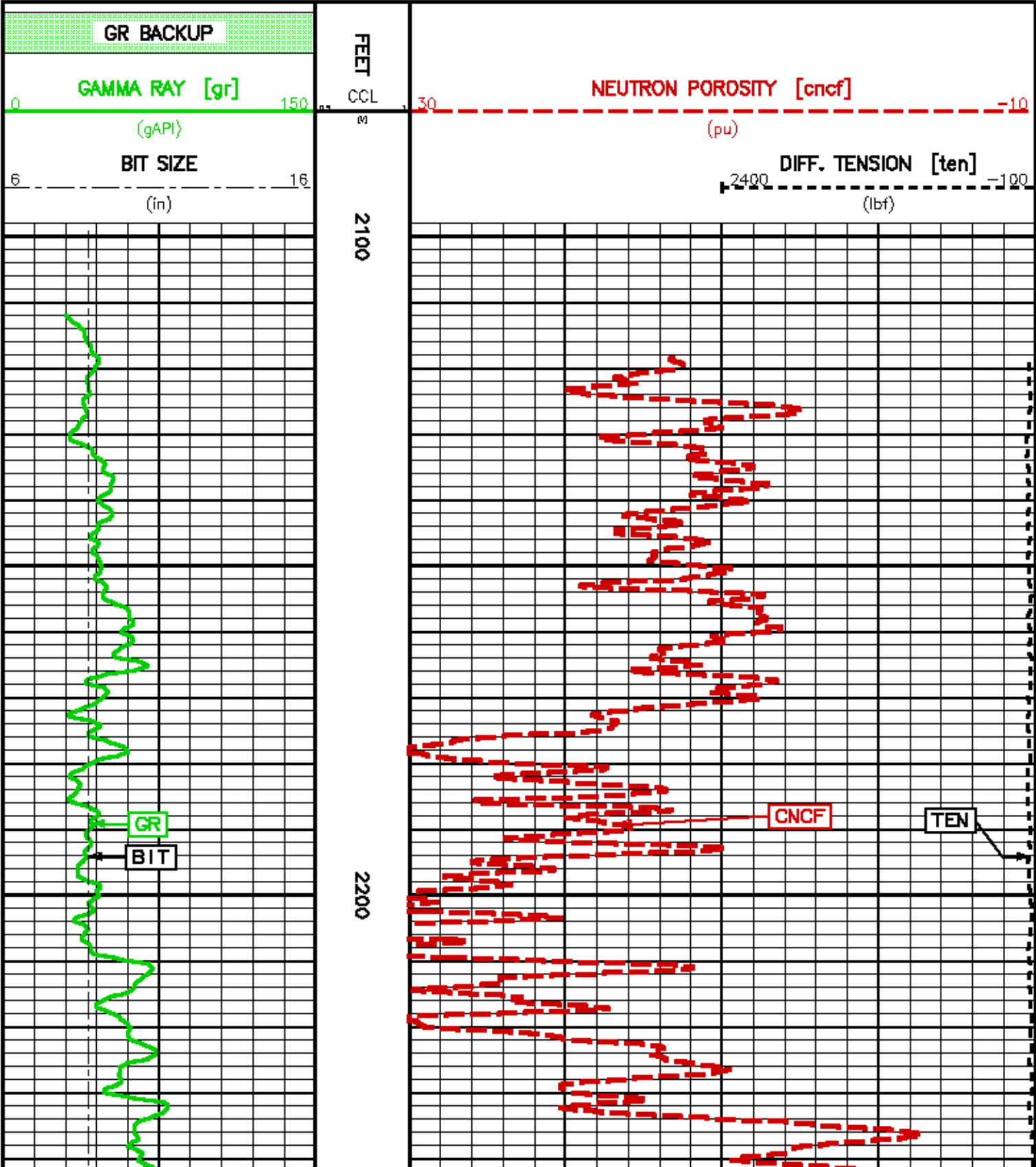
CURVE NAME	CURVE ALIAS	CREATION DATE	CURVE DESCRIPTION
F1:BIT	BIT	Feb 12 11:48:20 2010	BIT SIZE
F1:CCL	CCL	Feb 12 11:48:20 2010	CASINO COLLAR LOCATOR
F1:CNCF	CNCF	Feb 12 11:48:20 2010	FIELD NORMALIZED COMPENSATED NEUTRON POROSITY
F1:GR	GR	Feb 12 11:48:20 2010	GAMMA RAY
F1:TEN	TEN	Feb 12 11:48:20 2010	DIFFERENTIAL TENSION

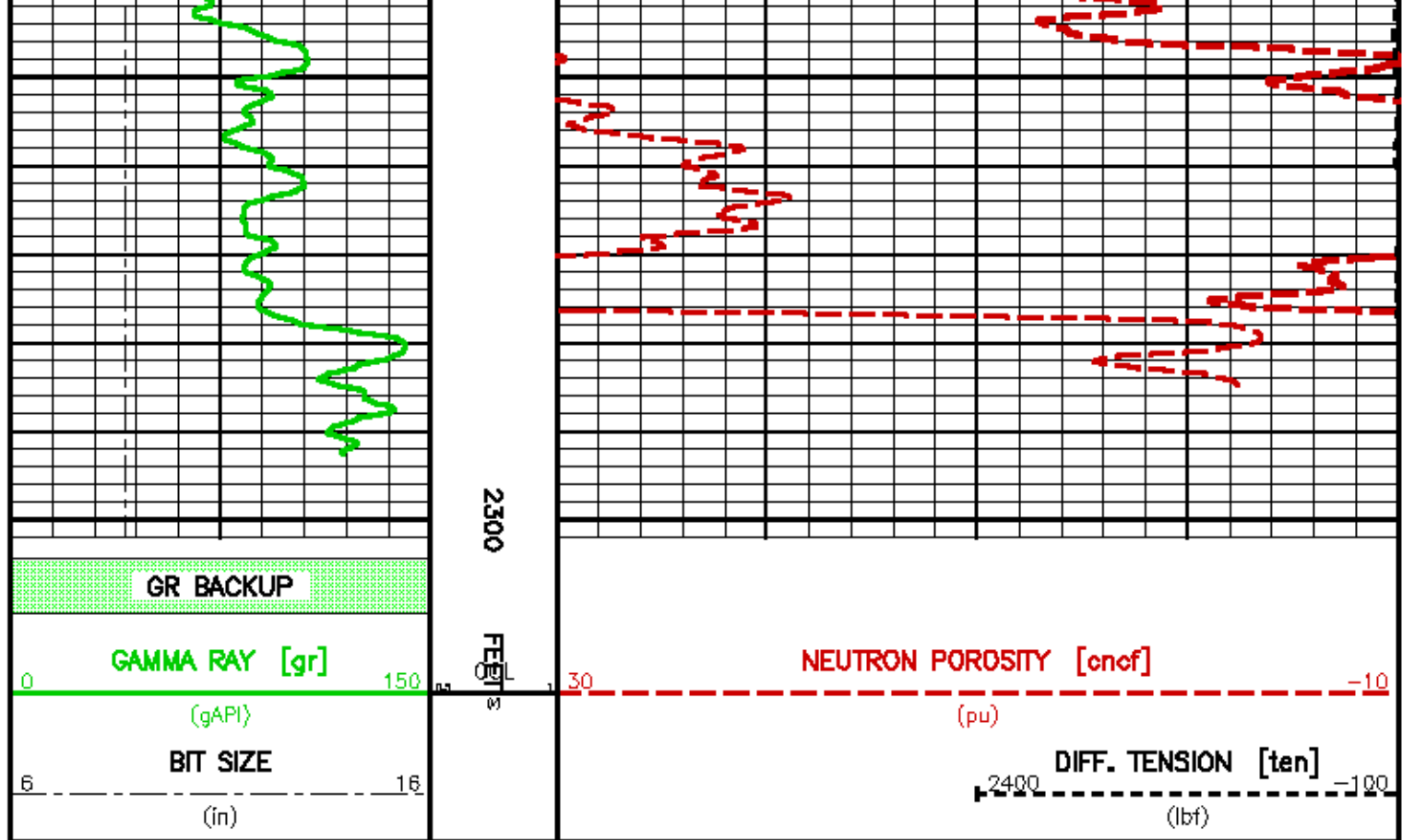
### CURVE MEASURE POINT OFFSET

CURVE	OFFSET (ft)	CURVE	OFFSET (ft)	CURVE	OFFSET (ft)	CURVE	OFFSET (ft)
-------	-------------	-------	-------------	-------	-------------	-------	-------------

BIT	0.00	CNCF	1.50	TEN	0.00
CCL	19.00	GR	7.50		

Presentation : opulson\_saaa.pdf [5"/100" Scale]  
 Plot Interval : 2099.25 - 2302 Feet  
 Data File 1 : F1 : opul:/data/1650/k970da07\_saaa.xff  
 Created On : Feb 12 11:48:20 2010  
 Company : MARATHON OIL COMPANY  
 Well : 596-29C-16  
 Field : GRAND VALLEY  
 File Interval : 0 - 2302 Feet  
 Out : k970Data





**MAIN LOG 5"/100FT SCALE**

ECLIPS 6.01 Feb 21, 2008  
 Updates: 1,40,41 Patches: 1,2,4,5,6

Fri Feb 12 11:40:56 2010

Perpllt /main/62

Cplot

Pdf\_Cpp /main/16

Fileview 5.42

**PARAMETER AND FILTER SUMMARY REPORT**

FILE: /dat1a/1830/k970ale06.prm  
 LOGGING MODE: DEPTH DIRECTION: UP  
 TOP DEPTH: 4184.734 ft BOTTOM DEPTH: 5079.707 ft

**SYMMETRIC FILTER**

MEASUREMENT TYPE	PARAMETER	VALUE	UNITS	INTERVAL (ft)	
GR LOW RES	FILTER (.1)	medium (1)		TOP	BOTTOM
GR MED RES	FILTER ()	medium (1)		"	"
TENSION	FILTER ()	medium (1)		"	"
CN LOW RES	FILTER (.1)	medium (1)		"	"
CN MED RES	FILTER ()	medium (1)		"	"

**BOREHOLE & CEMENT**

MEASUREMENT TYPE	PARAMETER	VALUE	UNITS	INTERVAL (ft)	
CASINO - BOREHOLE & CEMENT VOLUME	CASINO O.D.	4.500	1n	TOP	BOTTOM
	CASINO THICKNESS	0.250	1n	"	"
BIT SIZE	BIT SIZE	8.750	1n	"	"
BOREHOLE CORR DIAMETER SOURCE	CALIPER/FIXED DIA. (cnbh*)	USE FIXED SIZE		"	"
BOREHOLE CORR DIAMETER	FIXED DIAMETER (cnbh*)	8.750	1n	"	"

## ACCELERATION PROCESSING

MEASUREMENT TYPE	PARAMETER	VALUE	UNITS	INTERVAL (ft)
ACCEL CORR SWITCH	ACCEL DEPTH CORR	CORRECTION ON		TOP BOTTOM

## CN PROCESSING

MEASUREMENT TYPE	PARAMETER	VALUE	UNITS	INTERVAL (ft)
CN MATRIX	2456 MATRIX	SANDSTONE		TOP BOTTOM
CN BOREHOLE CORRECTION	SALINITY	861	ppm	" "
	BOREHOLE CORRECTION	ON		" "
CN CASING & CEMENT CORRECTION	CORRECTION	ON		" "
	BIT SIZE BEHIND CSNO	8.750	In	" "

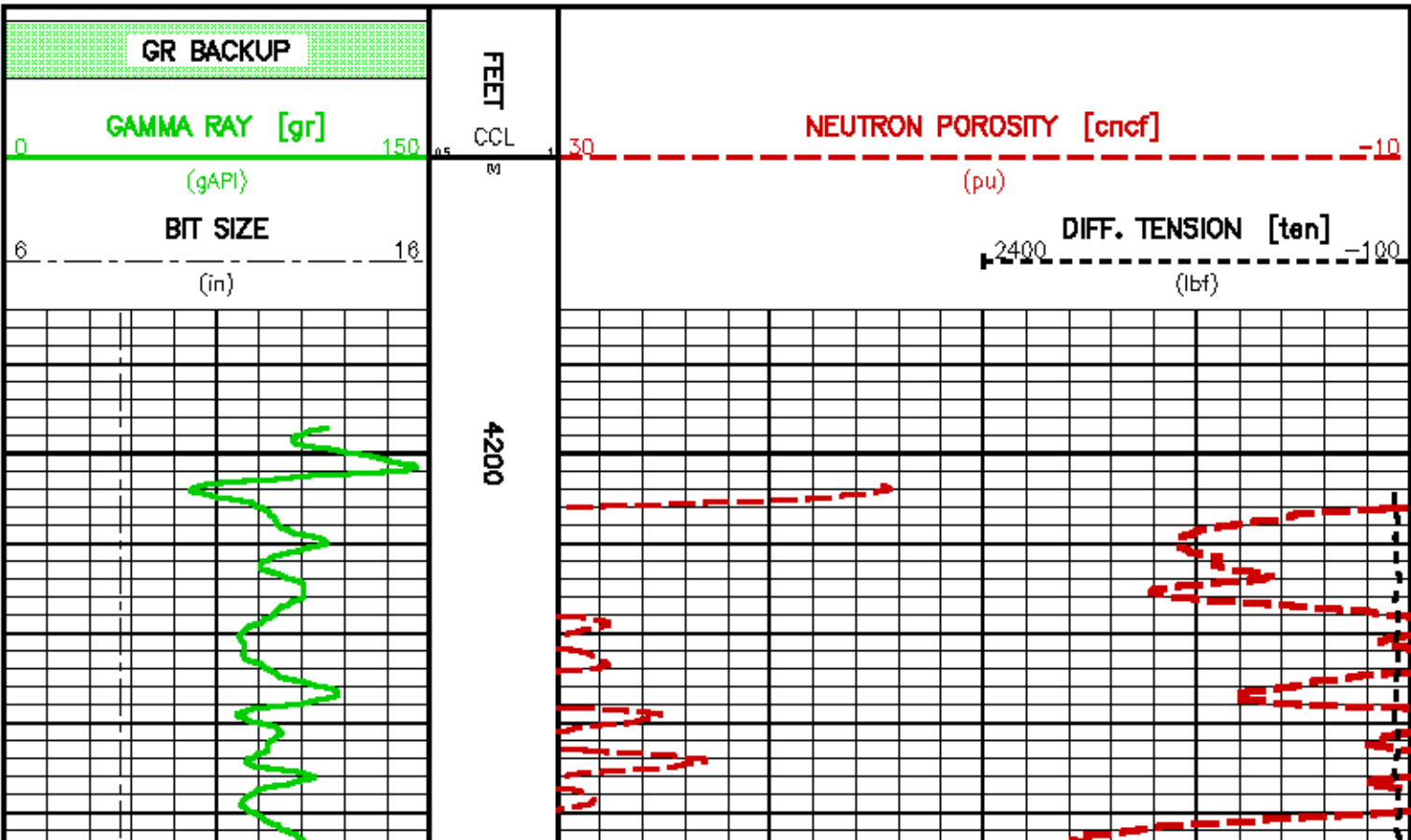
## CURVE DESCRIPTION REPORT

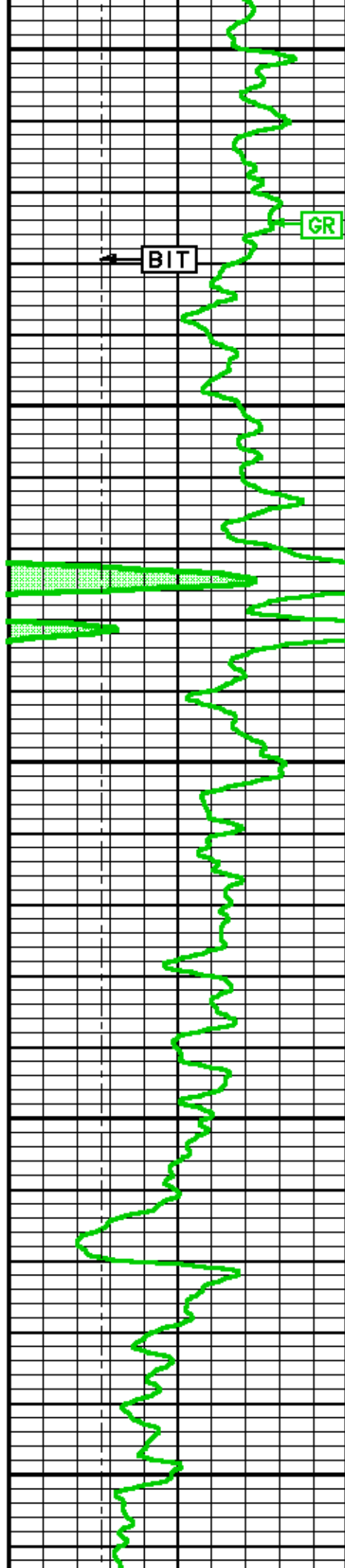
CURVE NAME	CURVE ALIAS	CREATION DATE	CURVE DESCRIPTION
F1:BIT	BIT	Feb 12 11:20:08 2010	BIT SIZE
F1:CCL	CCL	Feb 12 11:20:08 2010	CASING COLLAR LOCATOR
F1:CNCF	CNCF	Feb 12 11:20:08 2010	FIELD NORMALIZED COMPENSATED NEUTRON POROSITY
F1:GR	GR	Feb 12 11:20:08 2010	GAMMA RAY
F1:TEN	TEN	Feb 12 11:20:08 2010	DIFFERENTIAL TENSION

## CURVE MEASURE POINT OFFSET

CURVE	OFFSET (ft)	CURVE	OFFSET (ft)	CURVE	OFFSET (ft)	CURVE	OFFSET (ft)
BIT	0.00	CNCF	1.50	TEN	0.00		
CCL	19.00	GR	7.50				

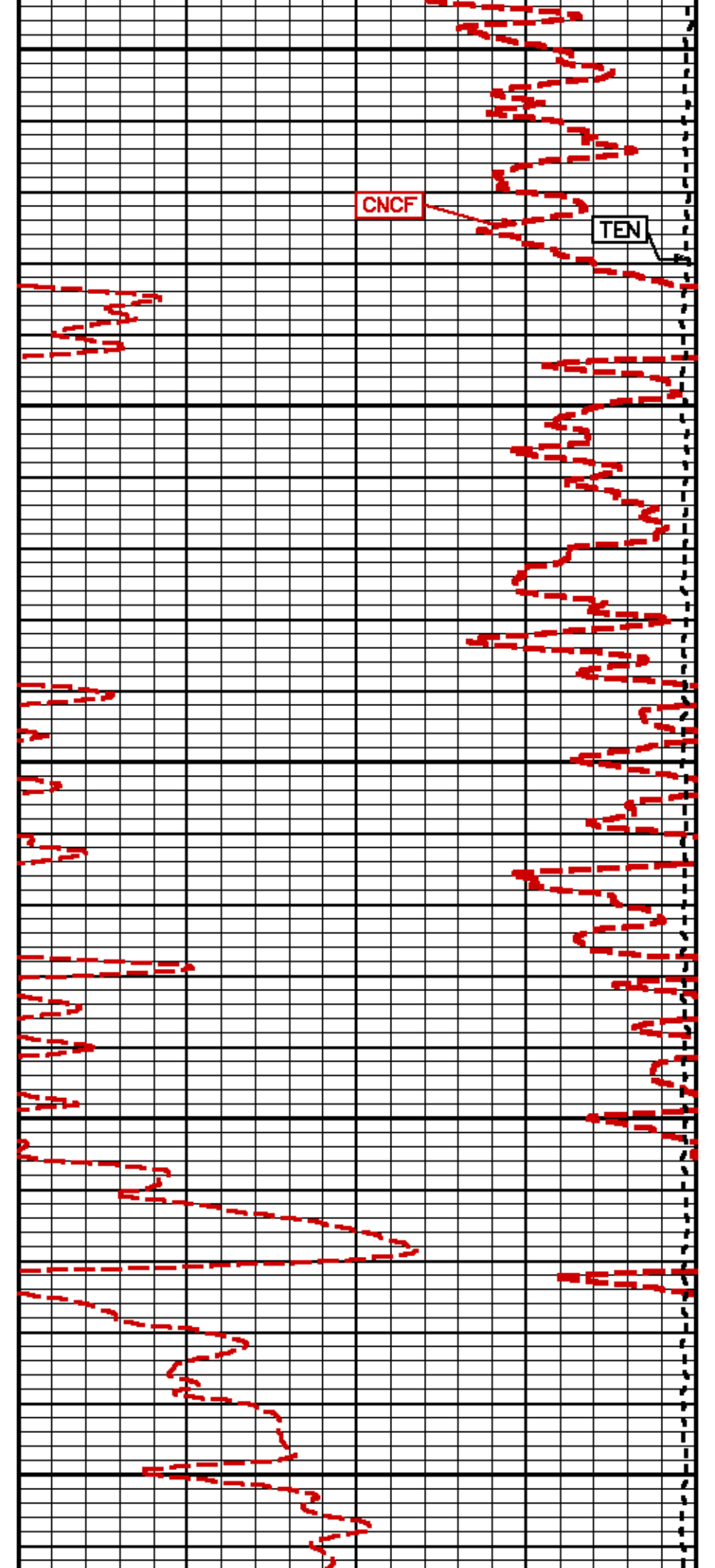
**Presentation** : opul:cn\_maln2.pdf [5"/100' Scale]  
**Plot Interval** : 4184.5 - 5079 Feet  
  
**Data File 1** : F1 : opul:/data/1650/k970data06\_maln2.dff  
**Created On** : Feb 12 11:20:08 2010  
**Company** : MARATHON OIL COMPANY  
**Well** : 598-29C-16  
**Field** : GRAND VALLEY  
**File Interval** : 0 - 5079 Feet  
**Out** : k97Data





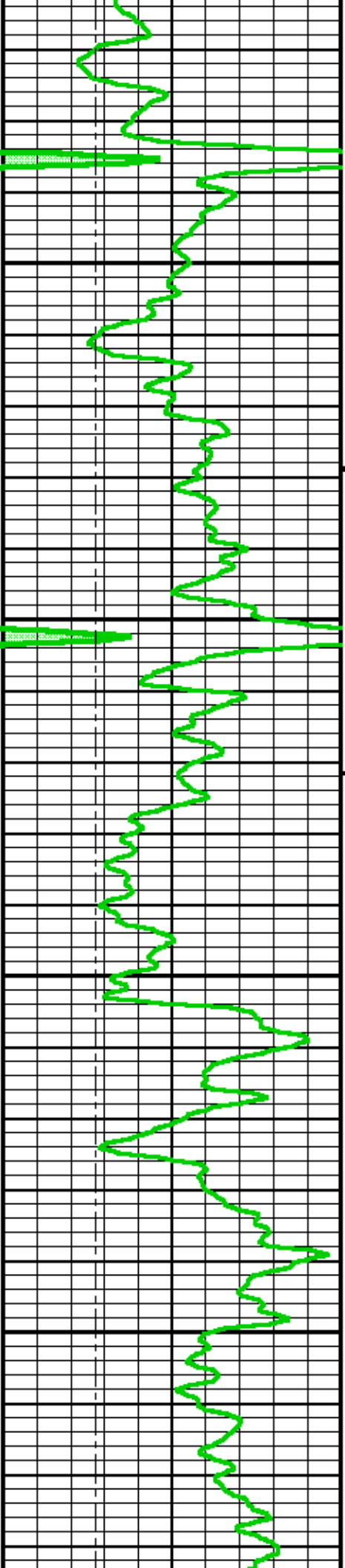
4300

4400



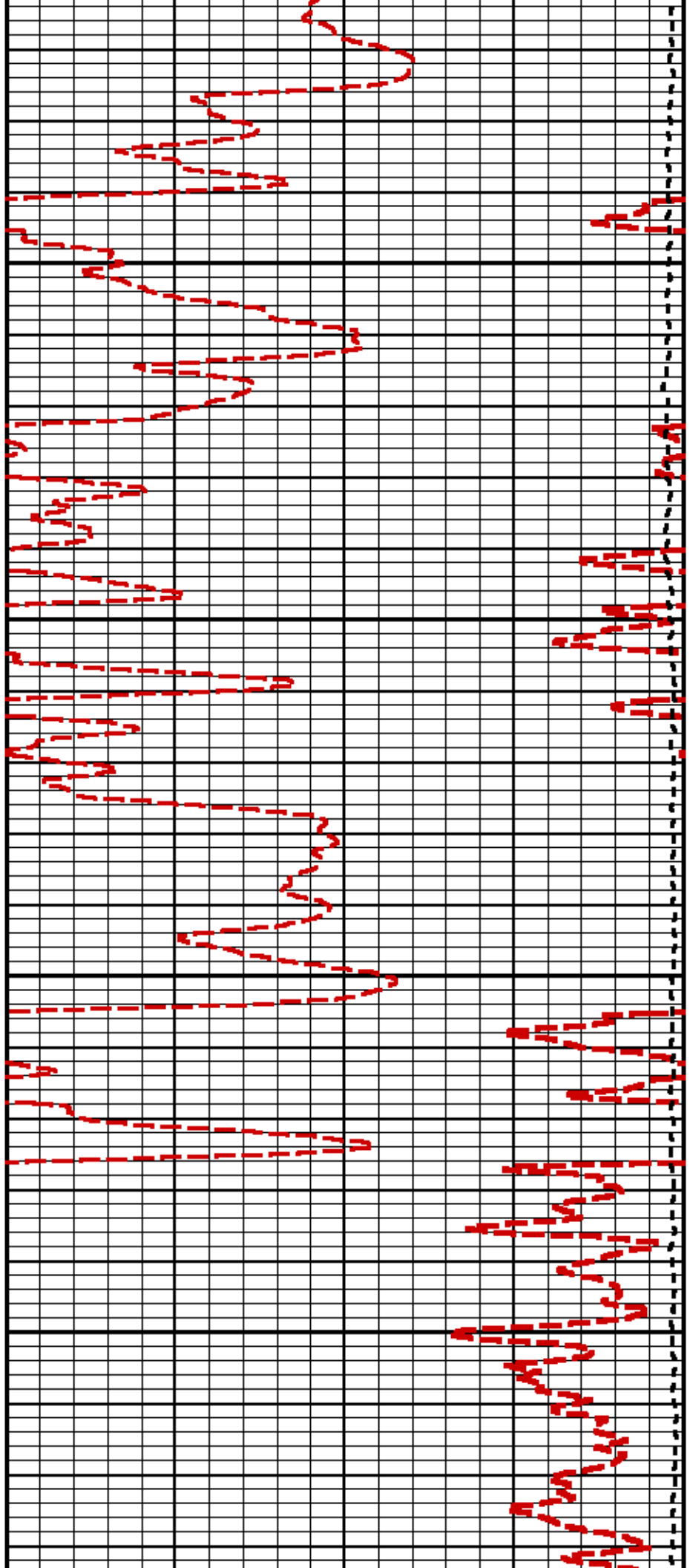
CNCF

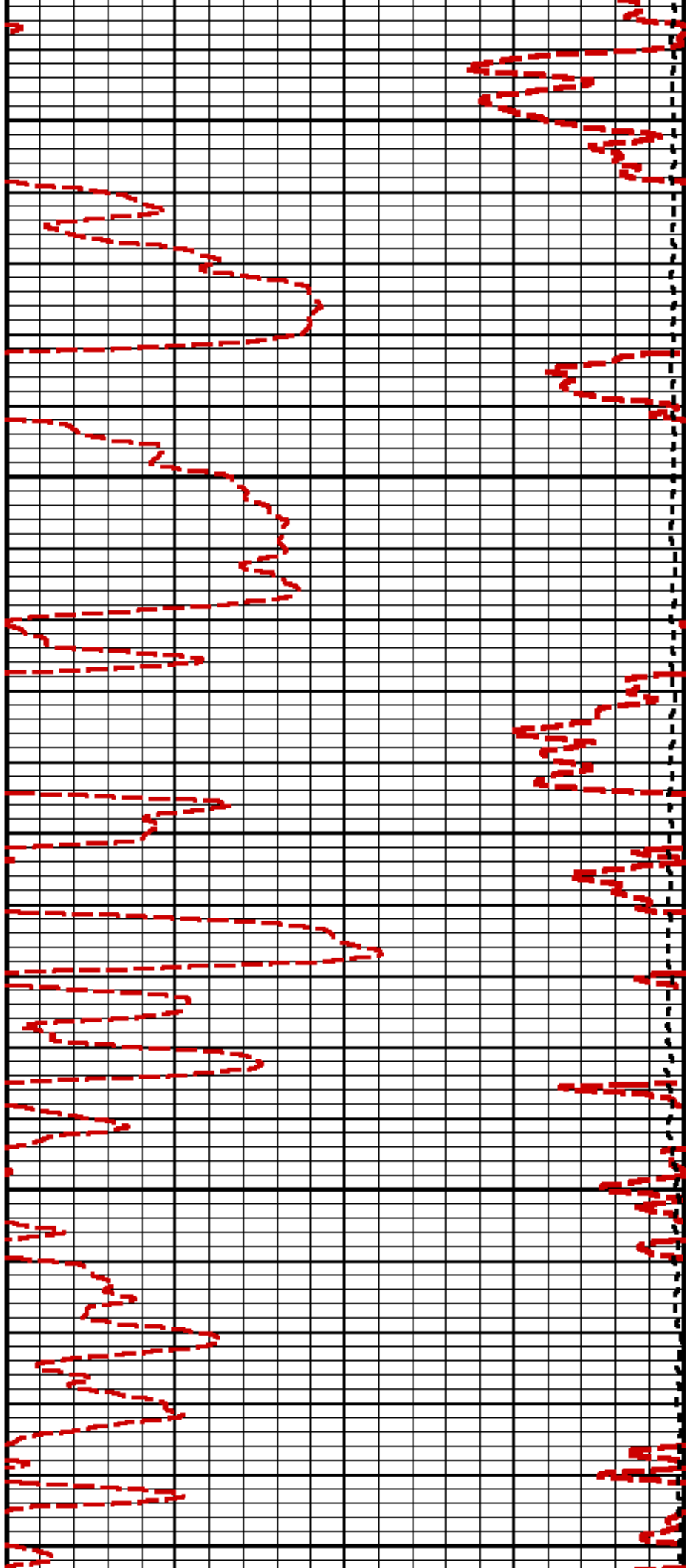
TEN



4500

4600

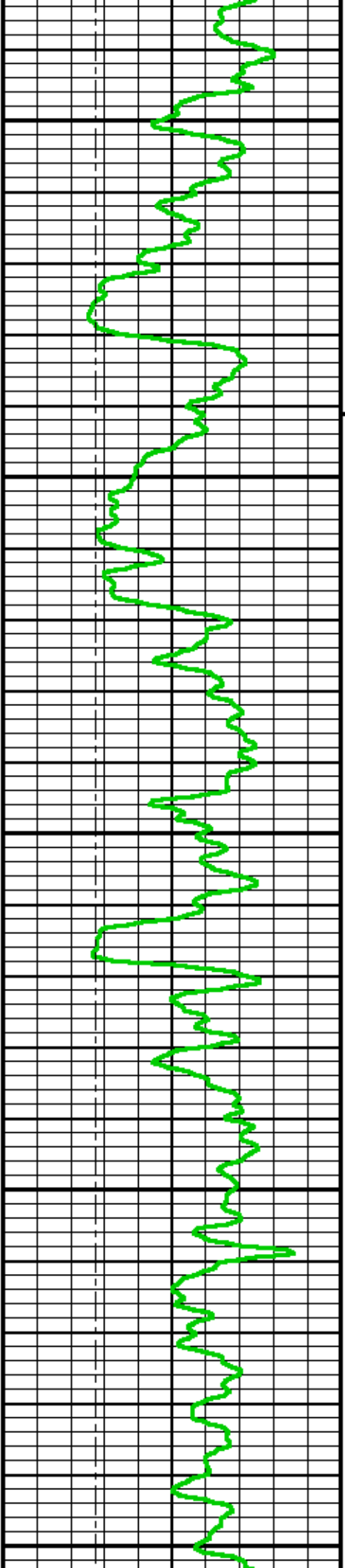




4700

4800

4900

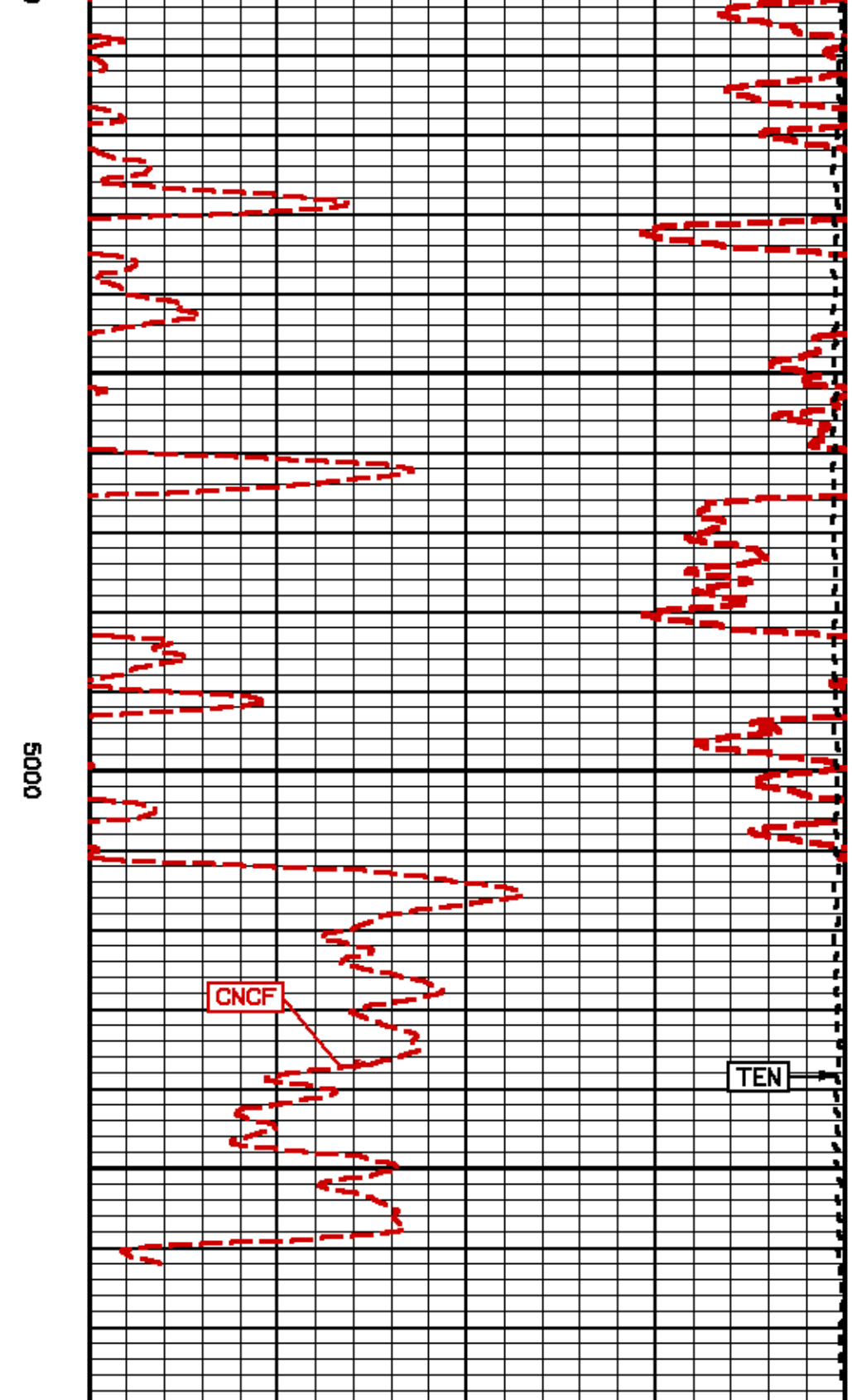




**GR BACKUP**

**GAMMA RAY [gr]**  
(gAPI) 0 150

**BIT SIZE**  
(in) 6 16



**NEUTRON POROSITY [cncf]**  
(pu) 30 -10

**DIFF. TENSION [ten]**  
(lbf) 2400 -100

# MAIN LOG 5"/100FT SCALE

ECLIPS 6.01 Feb 21, 2008  
 Updates: 1,40,41 Patches: 1,2,4,5,6

Fri Feb 12 11:28:18 2010

Perplf /main/62

Cplot

Pdf\_Cpp /main/16

Fileview 5.42

## PARAMETER AND FILTER SUMMARY REPORT

FILE: /data/1630/k970a1o05.prm  
 LOGGING MODE: DEPTH DIRECTION: UP  
 TOP DEPTH: 8183.750 ft BOTTOM DEPTH: 9721.191 ft

### SYMMETRIC FILTER

MEASUREMENT TYPE	PARAMETER	VALUE	UNITS	INTERVAL (ft)	
GR LOW RES	FILTER (.1)	medium (1)		TOP	BOTTOM
GR MED RES	FILTER ()	medium (1)		..	..
TENSION	FILTER ()	medium (1)		..	..
CN LOW RES	FILTER (.1)	medium (1)		..	..
CN MED RES	FILTER ()	medium (1)		..	..

### BOREHOLE & CEMENT

MEASUREMENT TYPE	PARAMETER	VALUE	UNITS	INTERVAL (ft)	
CASINO - BOREHOLE & CEMENT VOLUME	CASINO O.D.	4.500	1n	TOP	BOTTOM
	CASINO THICKNESS	0.250	1n	..	..
BIT SIZE	BIT SIZE	8.750	1n	TOP	7504.500
		7.875	1n	7504.500	BOTTOM
BOREHOLE CORR DIAMETER SOURCE	CALIPER/FIXED DIA. (cnbh*)	USE FIXED SIZE		TOP	BOTTOM
BOREHOLE CORR DIAMETER	FIXED DIAMETER (cnbh*)	8.750	1n	TOP	7505.000
		7.875	1n	7505.000	BOTTOM

### ACCELERATION PROCESSING

MEASUREMENT TYPE	PARAMETER	VALUE	UNITS	INTERVAL (ft)	
ACCEL CORR SWITCH	ACCEL DEPTH CORR	CORRECTION ON		TOP	BOTTOM

### CN PROCESSING

MEASUREMENT TYPE	PARAMETER	VALUE	UNITS	INTERVAL (ft)	
CN MATRIX	2436 MATRIX	SANDSTONE		TOP	BOTTOM
CN BOREHOLE CORRECTION	SALINITY	881	ppm	..	..
		BOREHOLE CORRECTION	CN	..	..
CN CASING & CEMENT CORRECTION	CORRECTION	CN		..	..
		BIT SIZE BEHIND CSG	8.750	1n	TOP
		7.875	1n	7515.750	BOTTOM

### CURVE DESCRIPTION REPORT

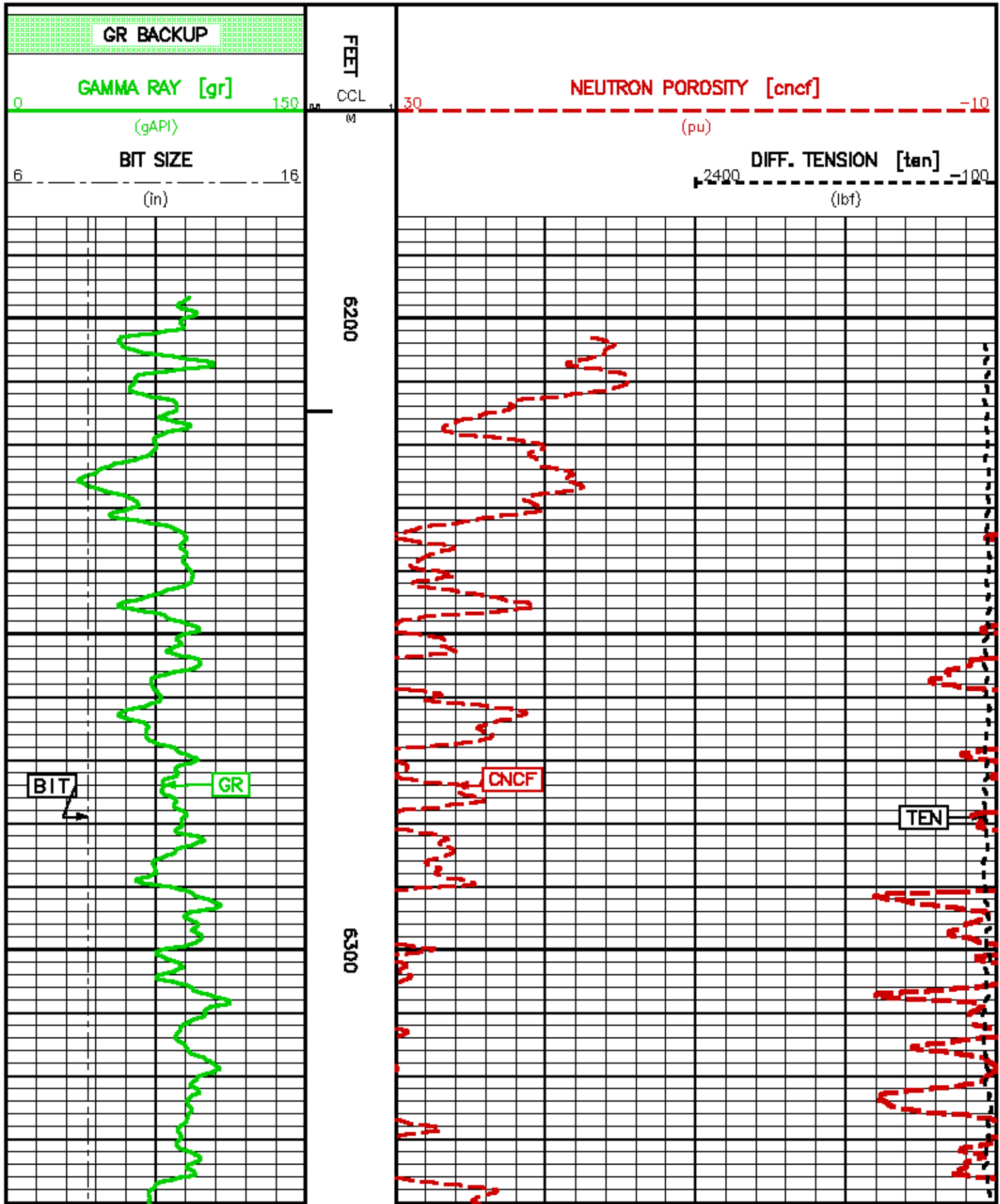
CURVE NAME	CURVE ALIAS	CREATION DATE	CURVE DESCRIPTION
F1:BIT	BIT	Feb 12 10:10:05 2010	BIT SIZE
F1:CCL	CCL	Feb 12 10:10:05 2010	CASING COLLAR LOCATOR
F1:CNCF	CNCF	Feb 12 10:10:05 2010	FIELD NORMALIZED COMPENSATED NEUTRON POROSITY
F1:GR	GR	Feb 12 10:10:05 2010	GAMMA RAY
F1:TEN	TEN	Feb 12 10:10:05 2010	DIFFERENTIAL TENSION

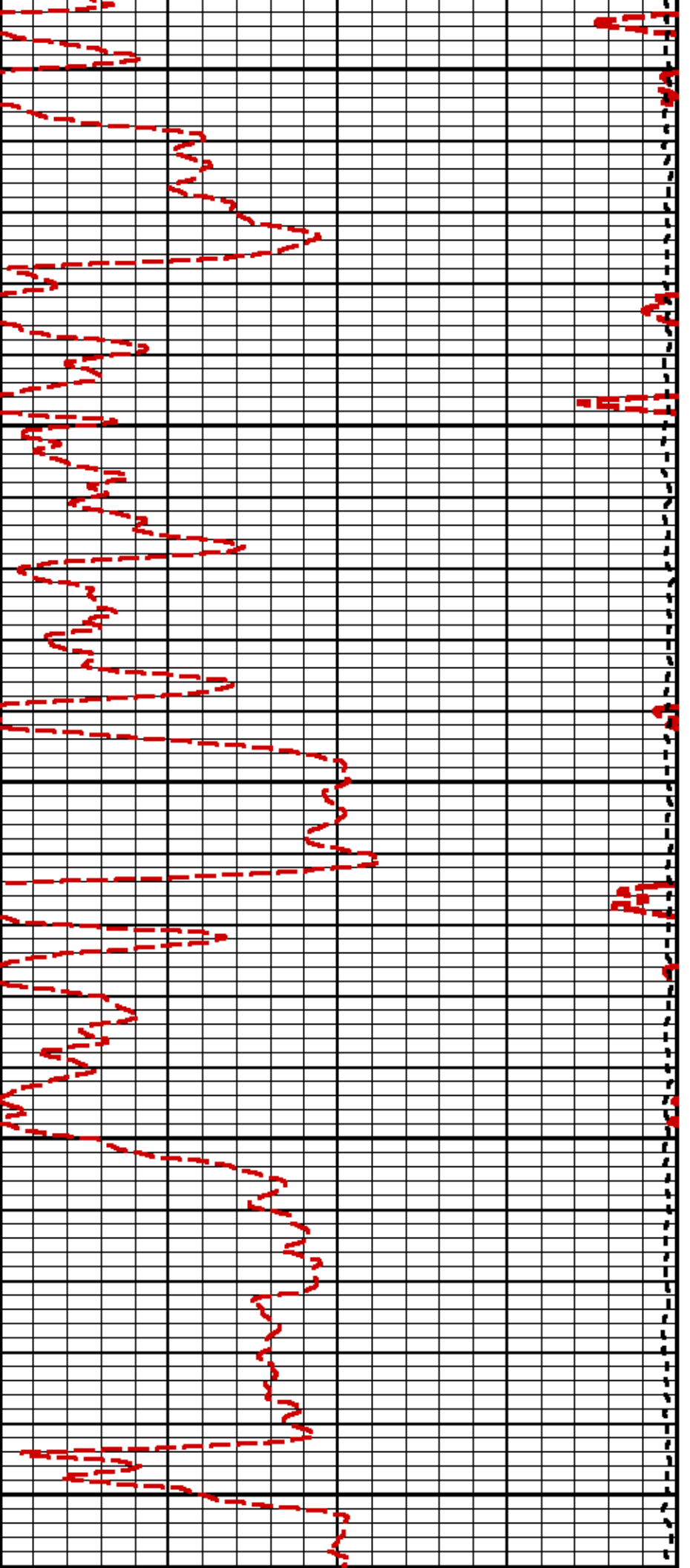
### CURVE MEASURE POINT OFFSET

CURVE	OFFSET (ft)	CURVE	OFFSET (ft)	CURVE	OFFSET (ft)	CURVE	OFFSET (ft)
BIT	0.00	CNCF	1.50	TEN	0.00		
CCL	19.00	GR	7.50				

Resolution : 0.01sec/min (5 / 100 scale)  
Plot Interval : 6184 - 9720 Feet

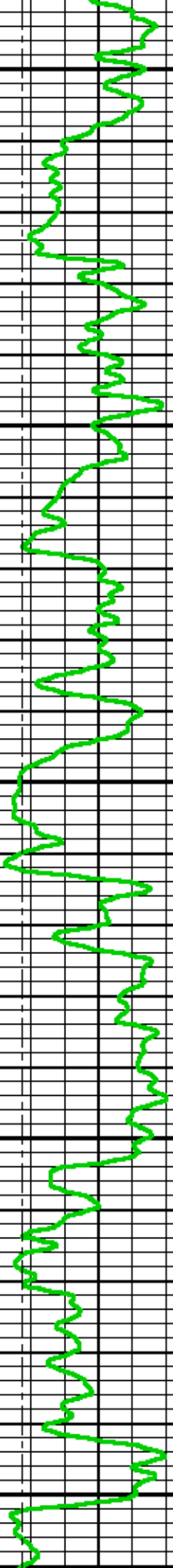
Data File 1 : F1 : c:\puls\data\1630\k870alc05\_main.xif  
Created On : Feb 12 10:10:05 2010  
Company : MARATHON OIL COMPANY  
Well : 506-29C-16  
Field : GRAND VALLEY  
File Interval : 0 - 9720 Feet  
Oct : k870alc

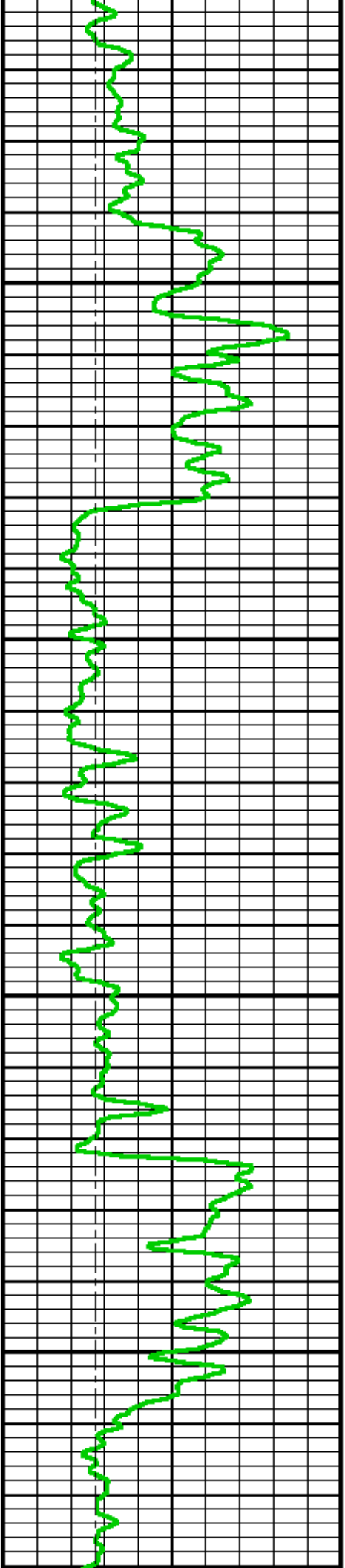




6400

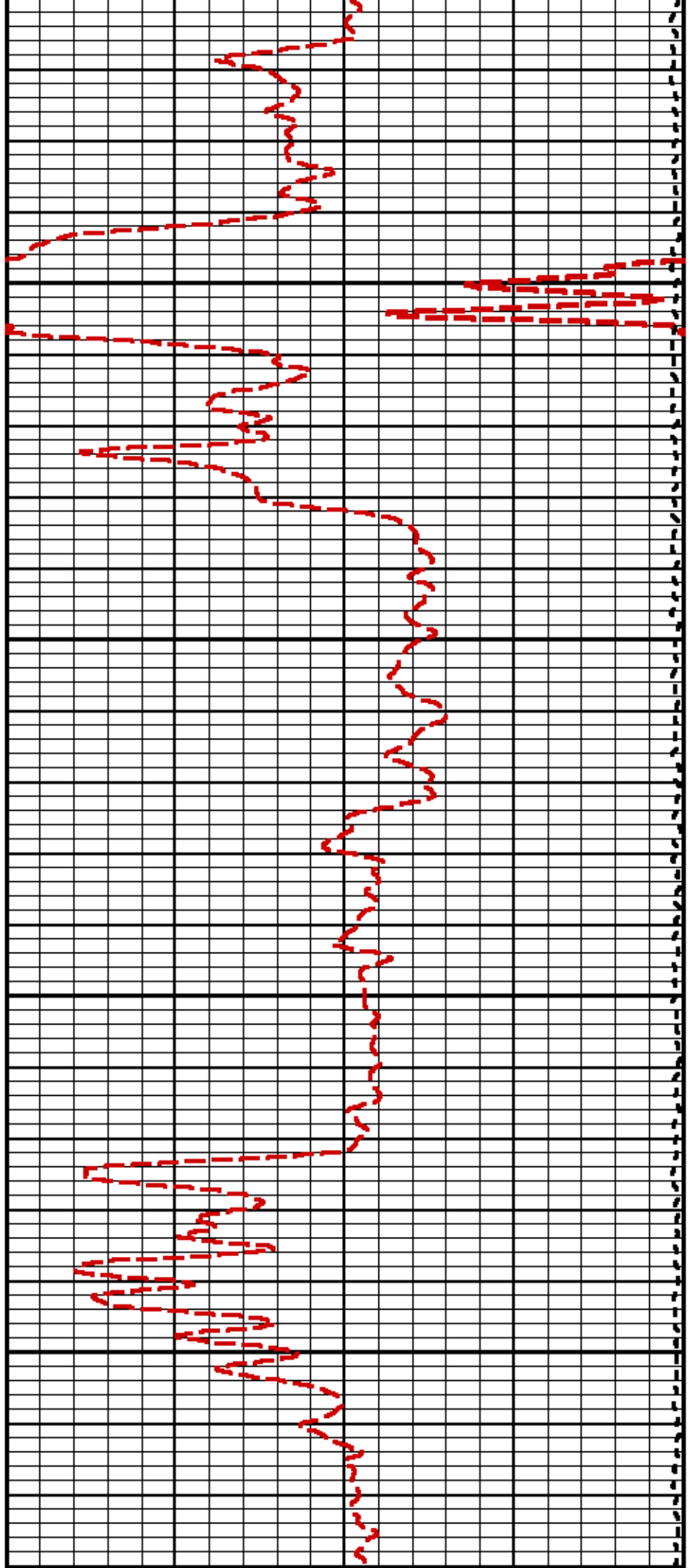
6500





5600

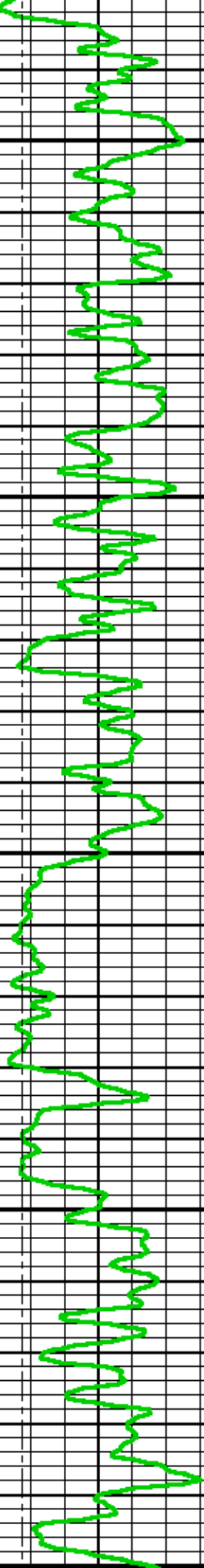
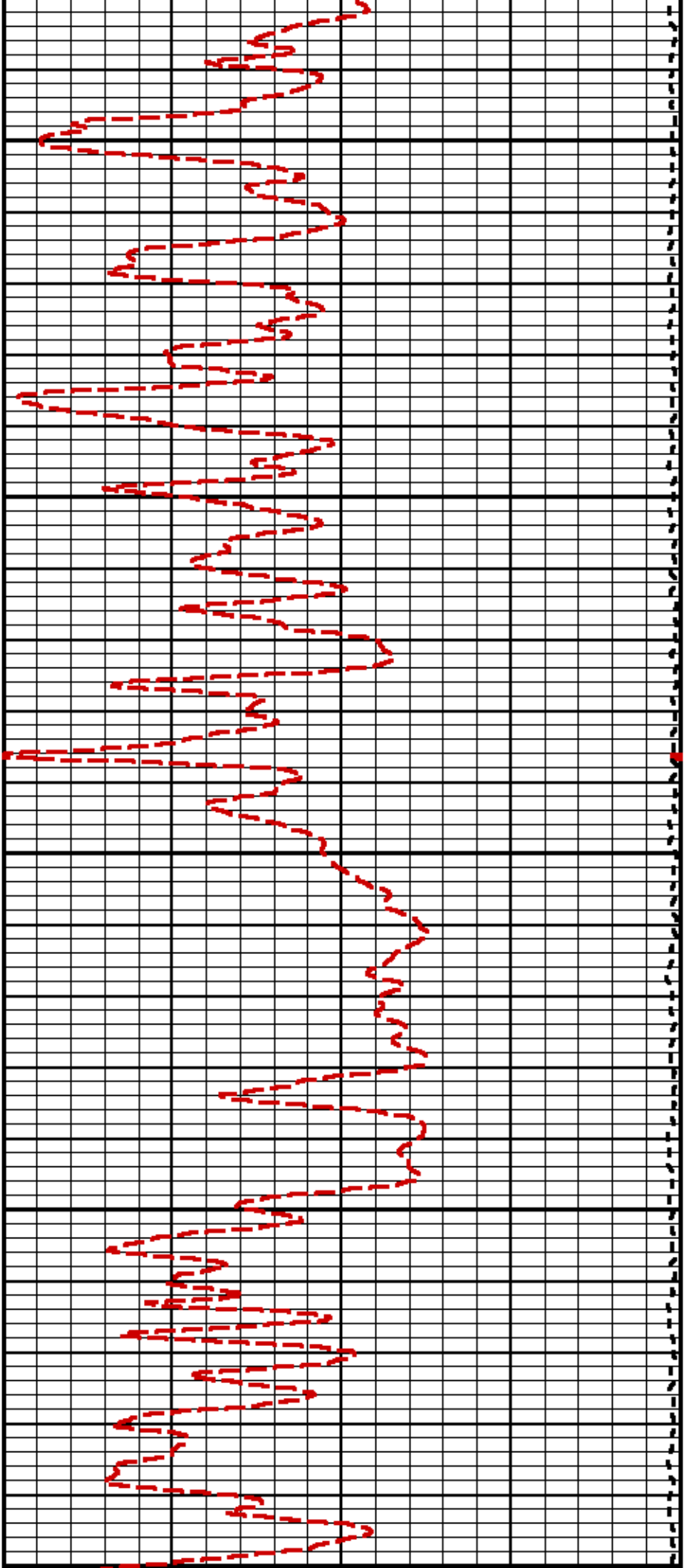
5700

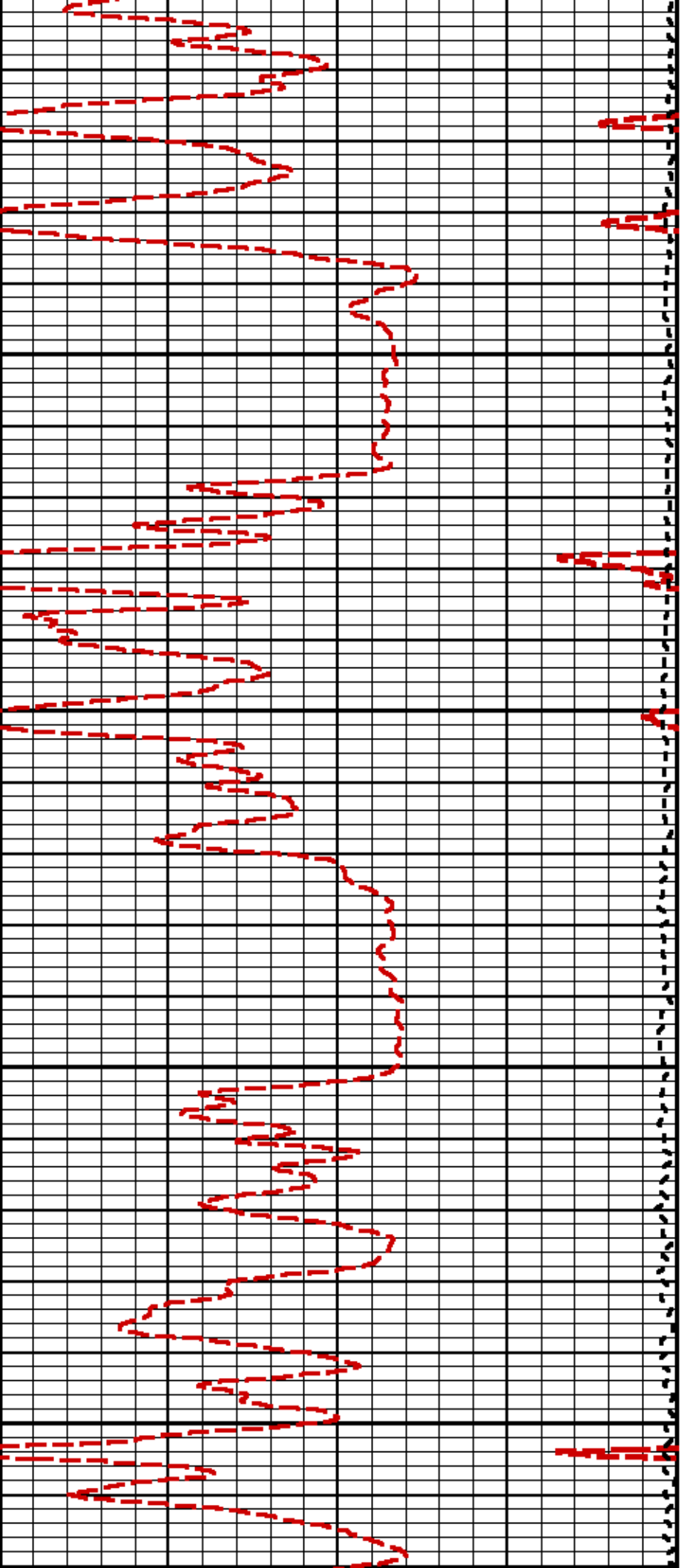


6800

6900

70

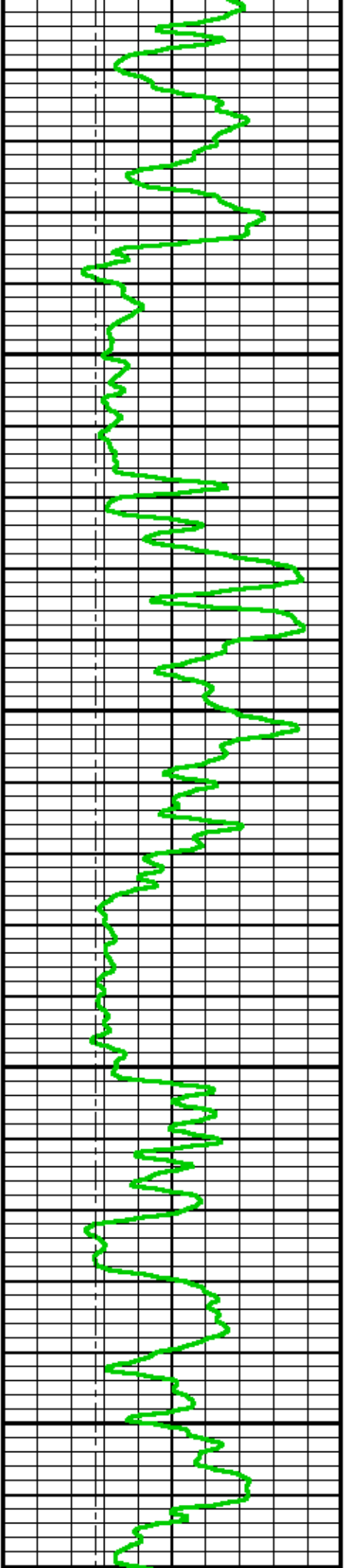


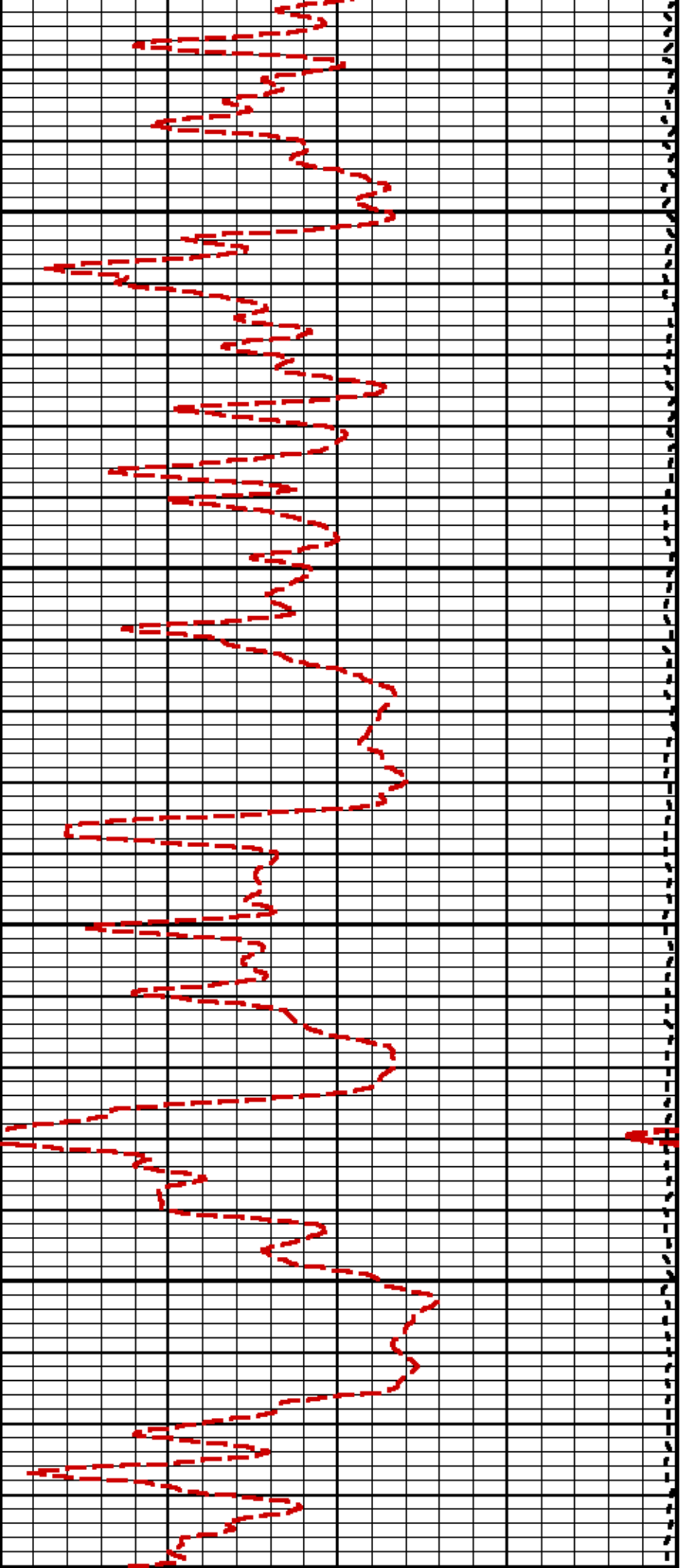


00

7100

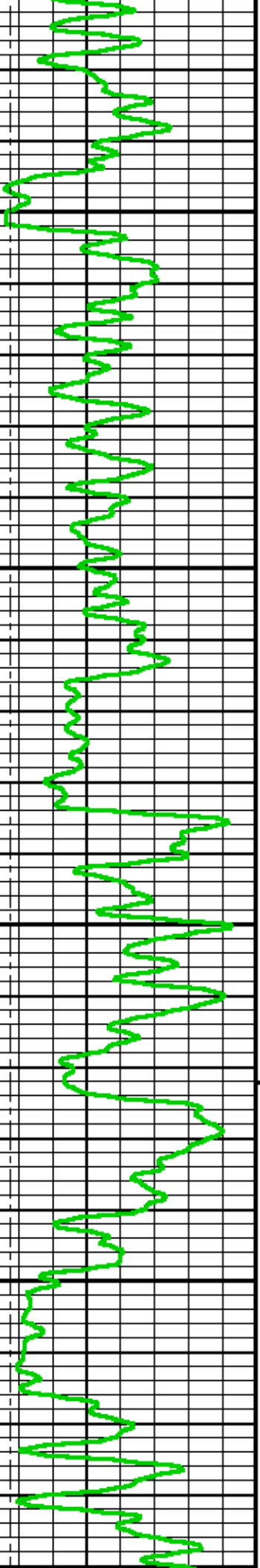
7200

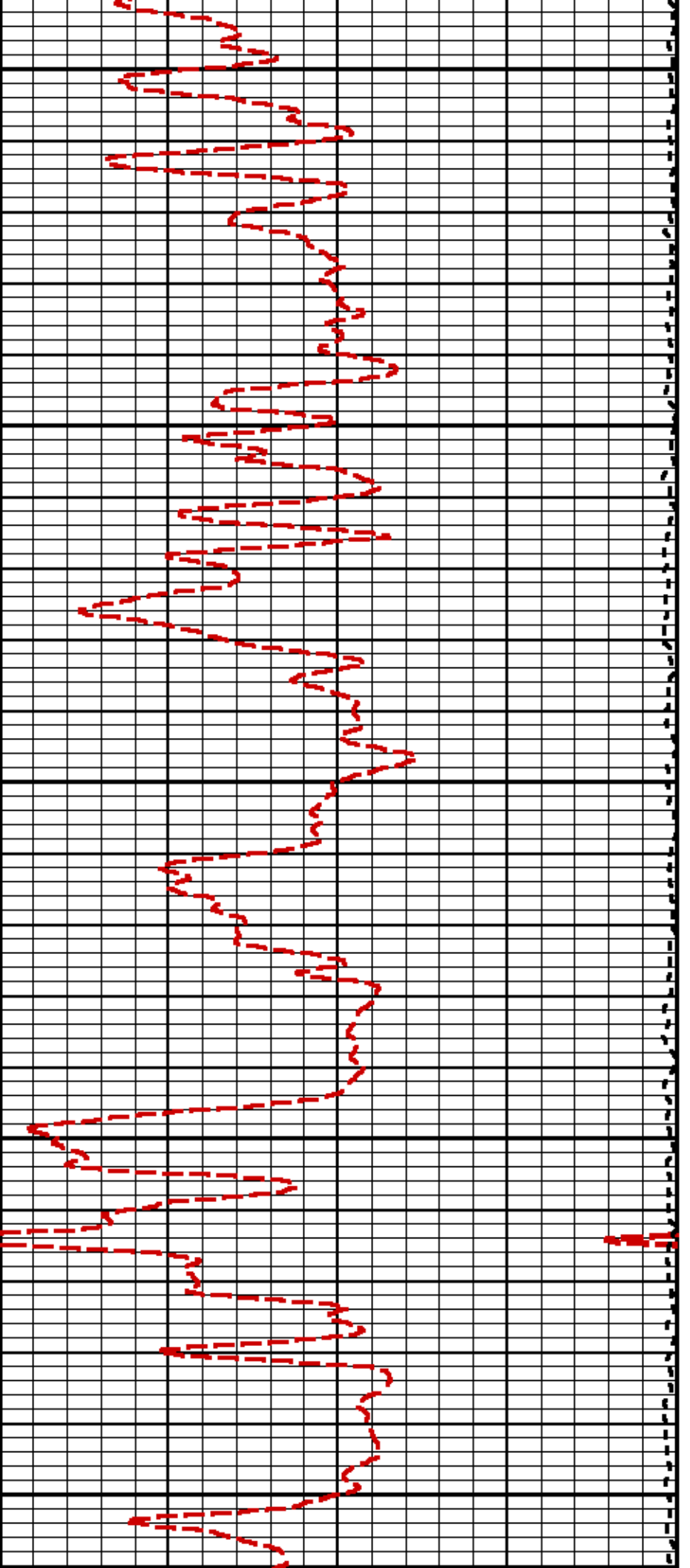




7300

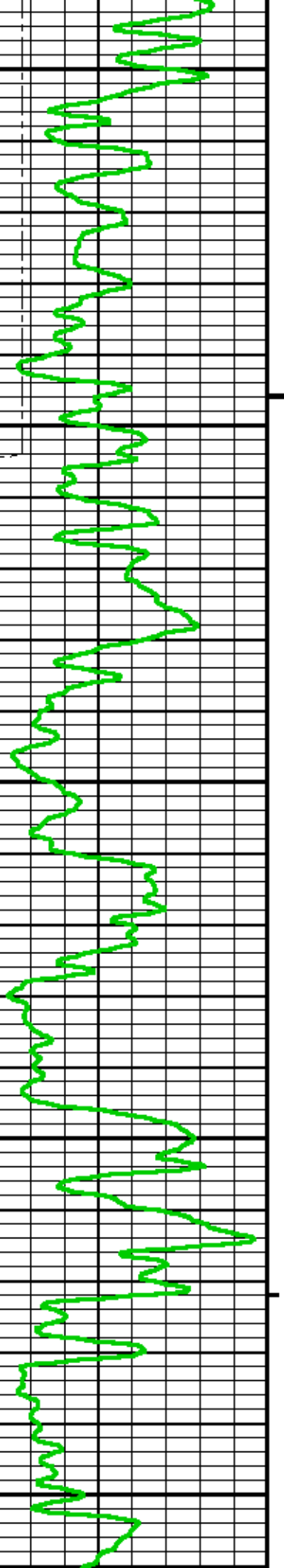
7400

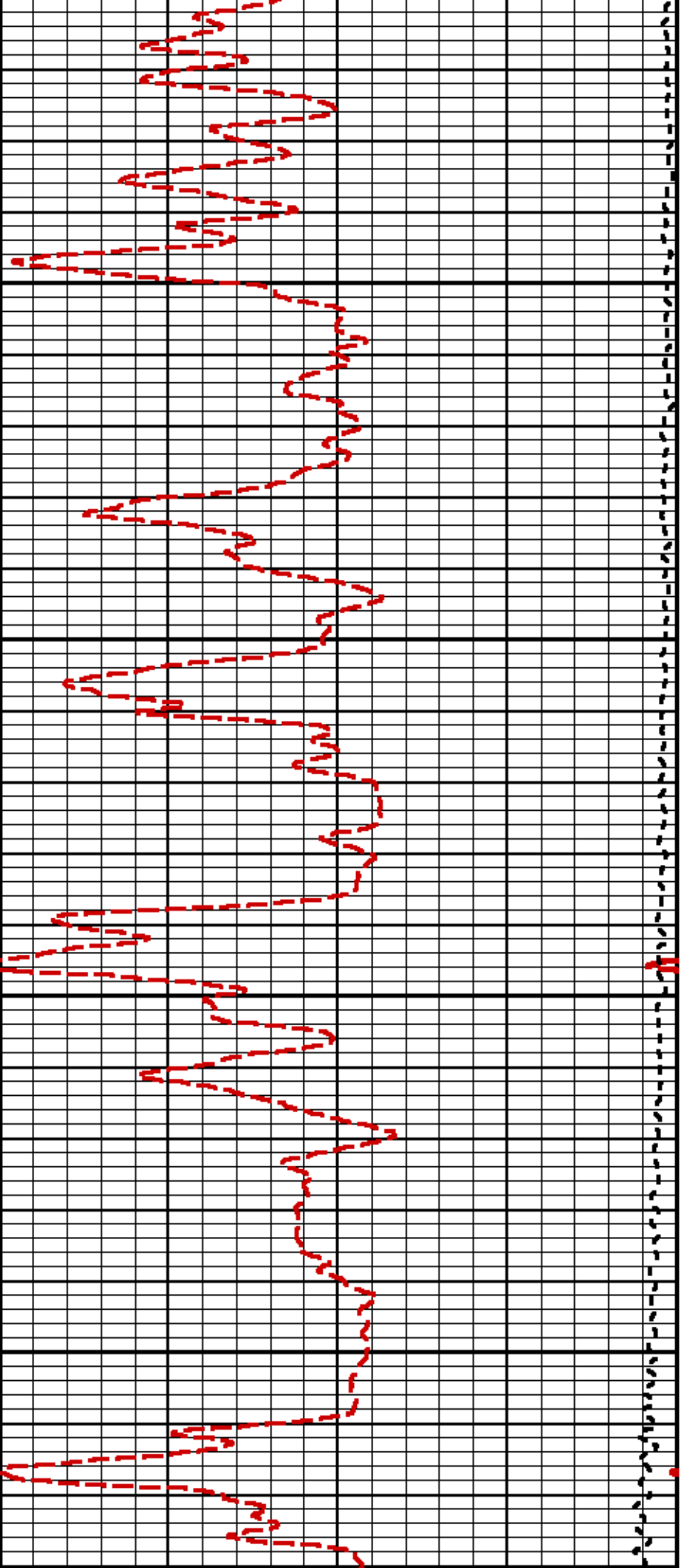




7500

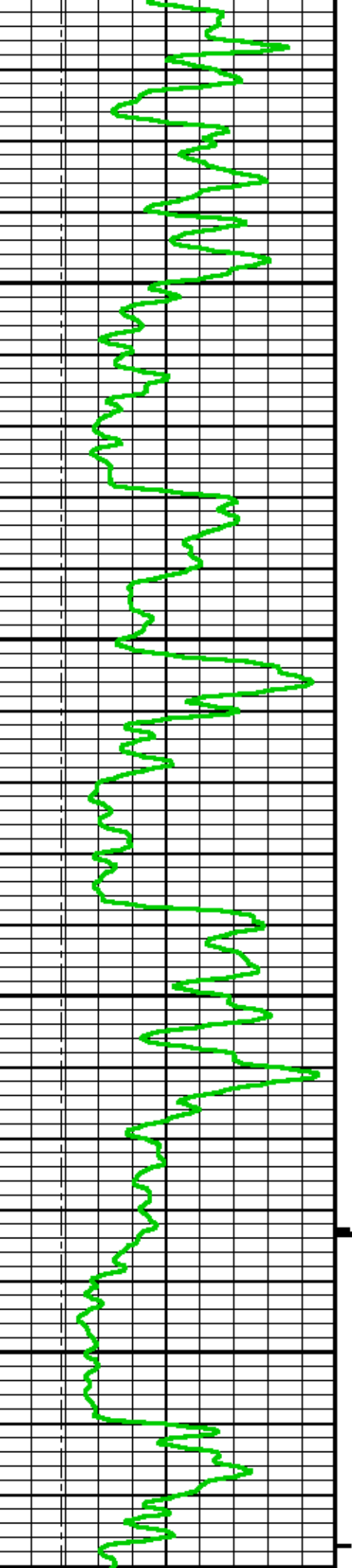
7600

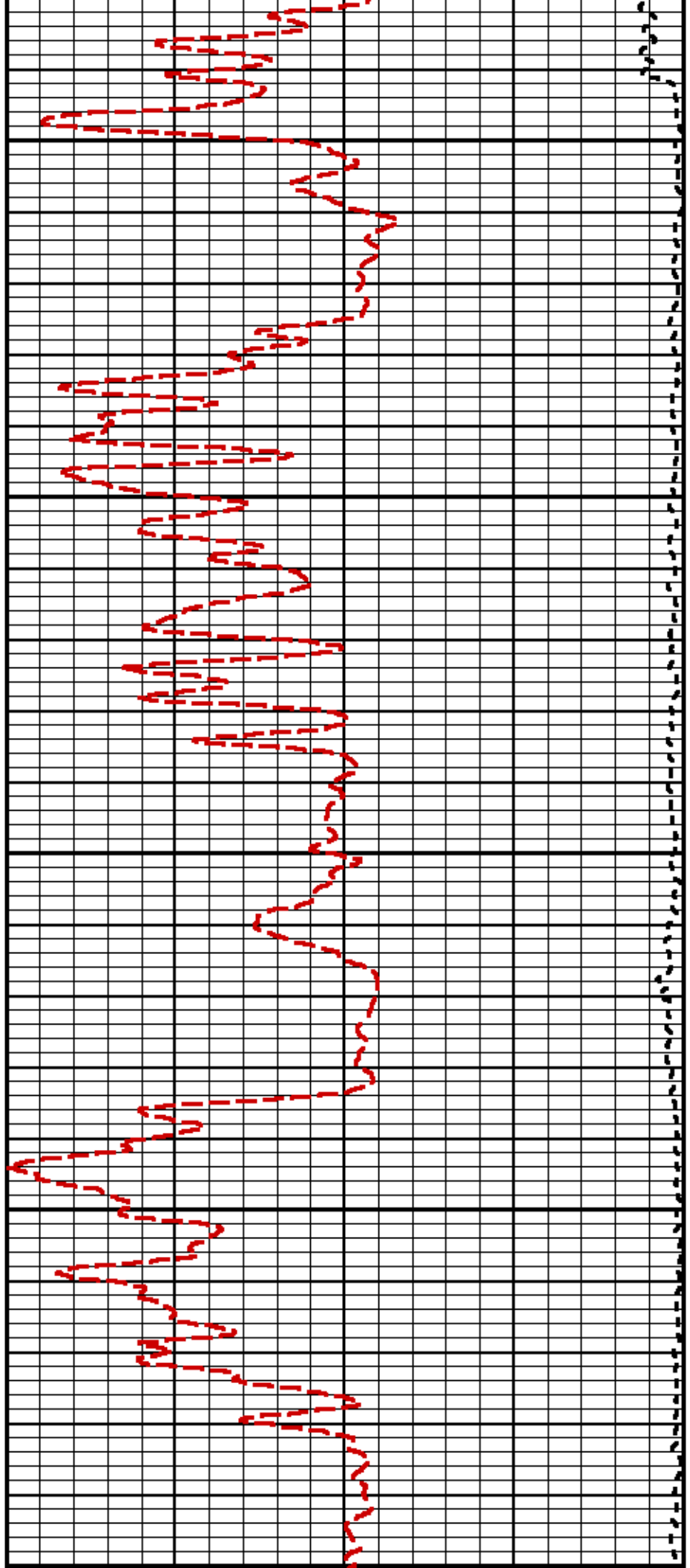
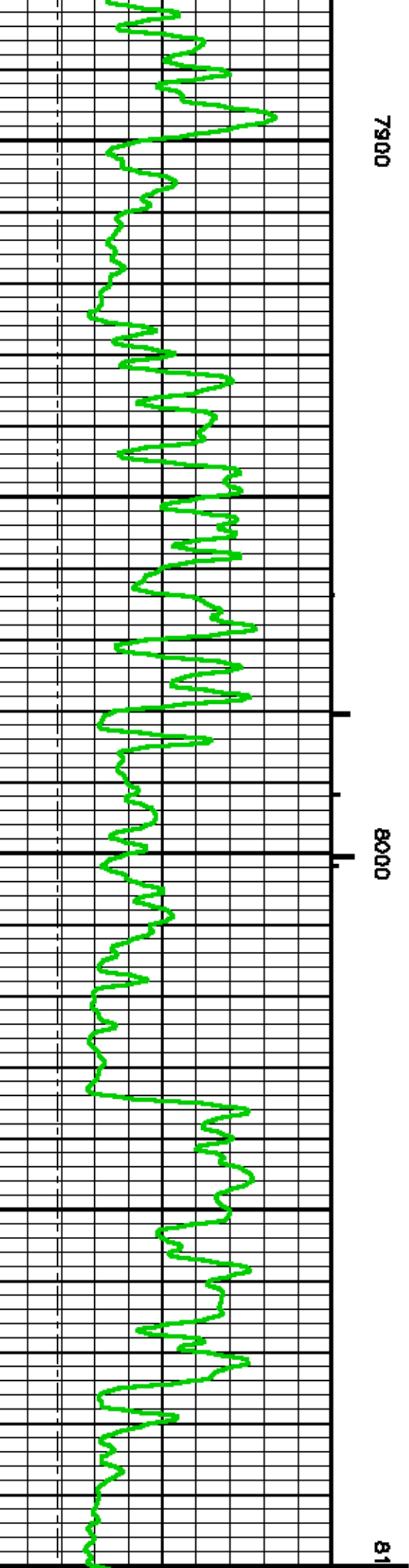


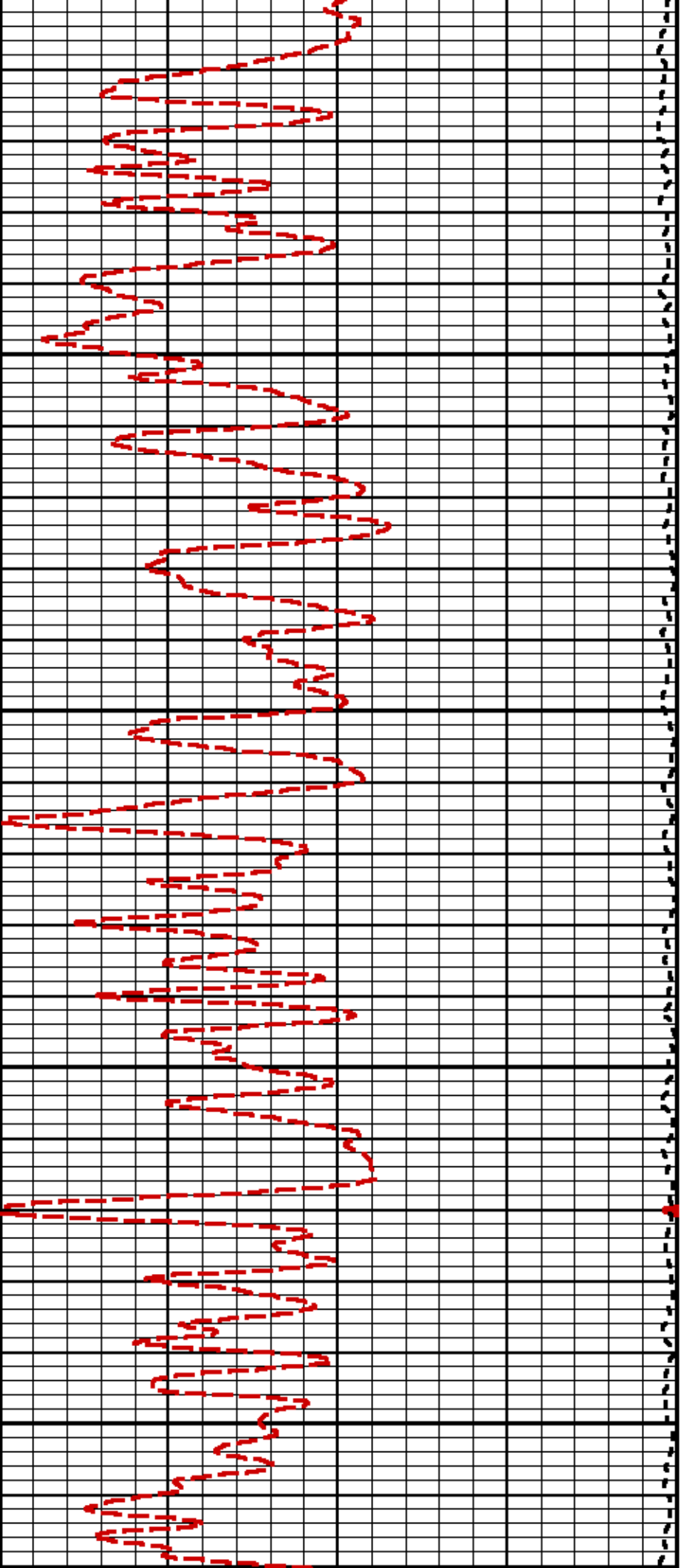


7700

7800



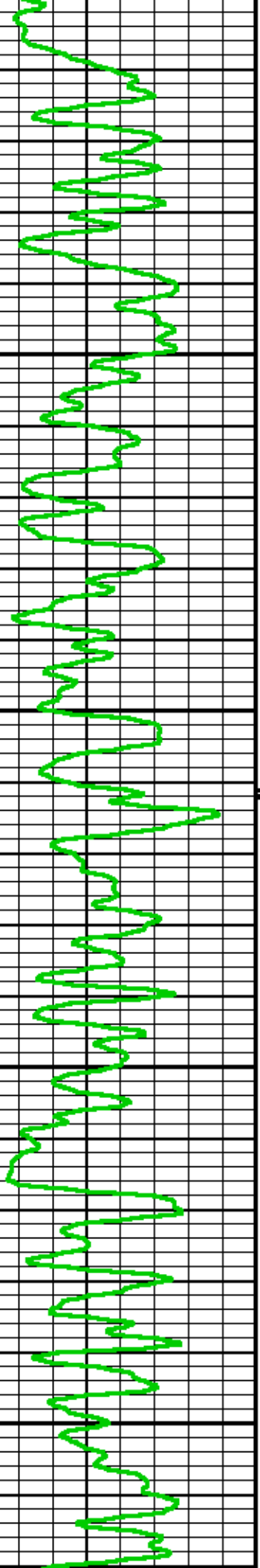




00

8200

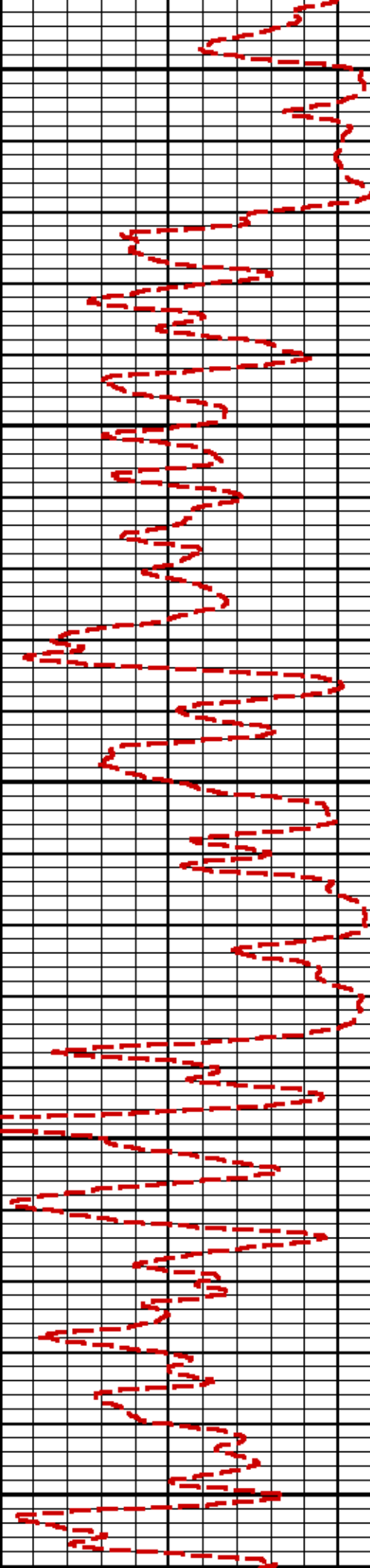
8300

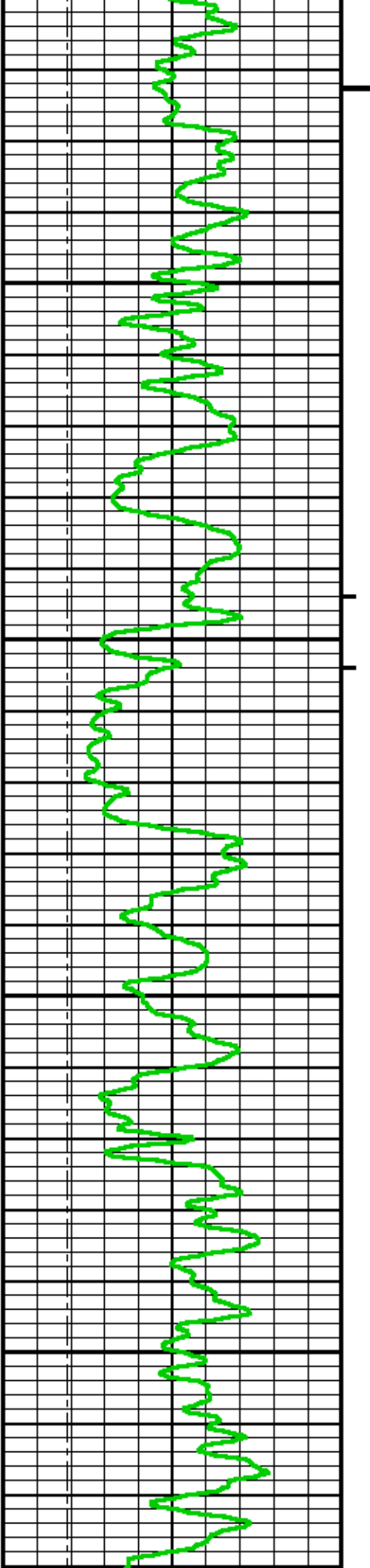




8600

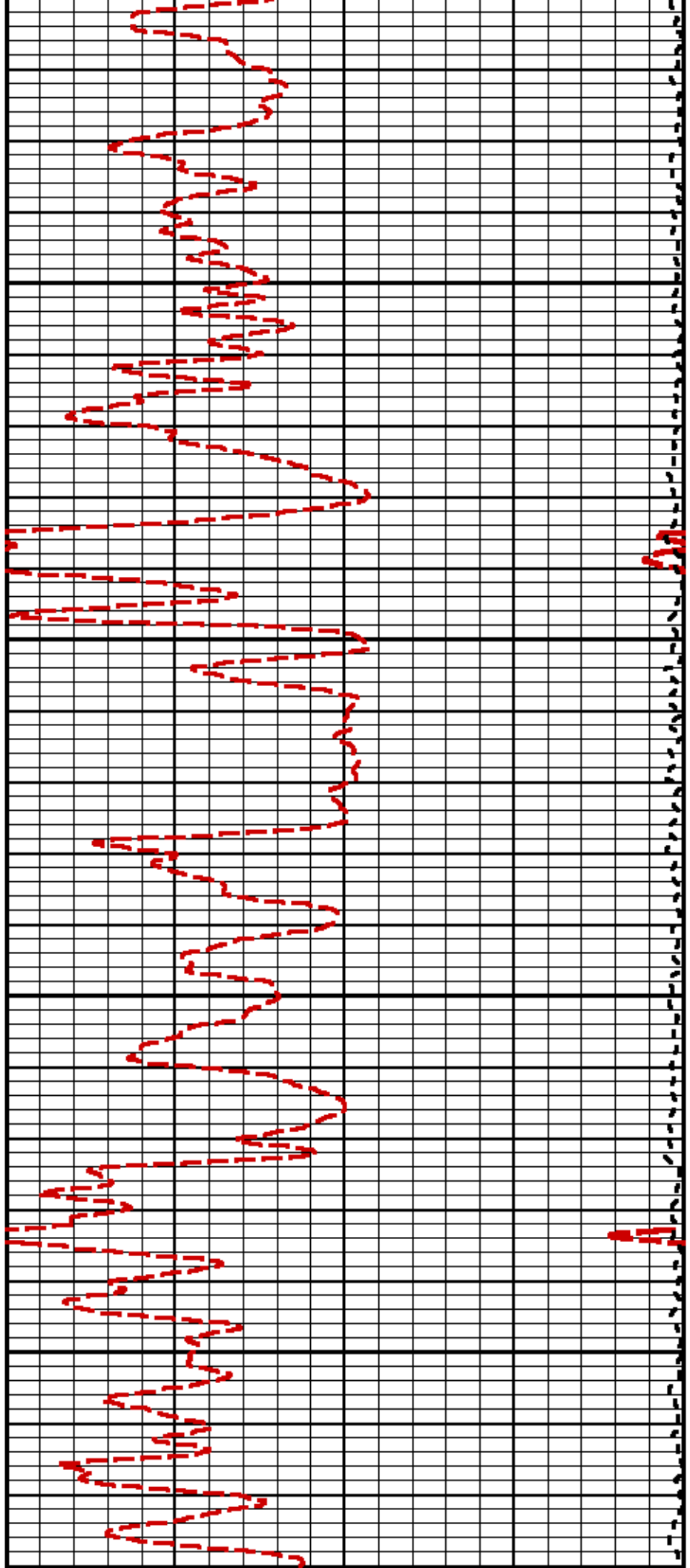
8700

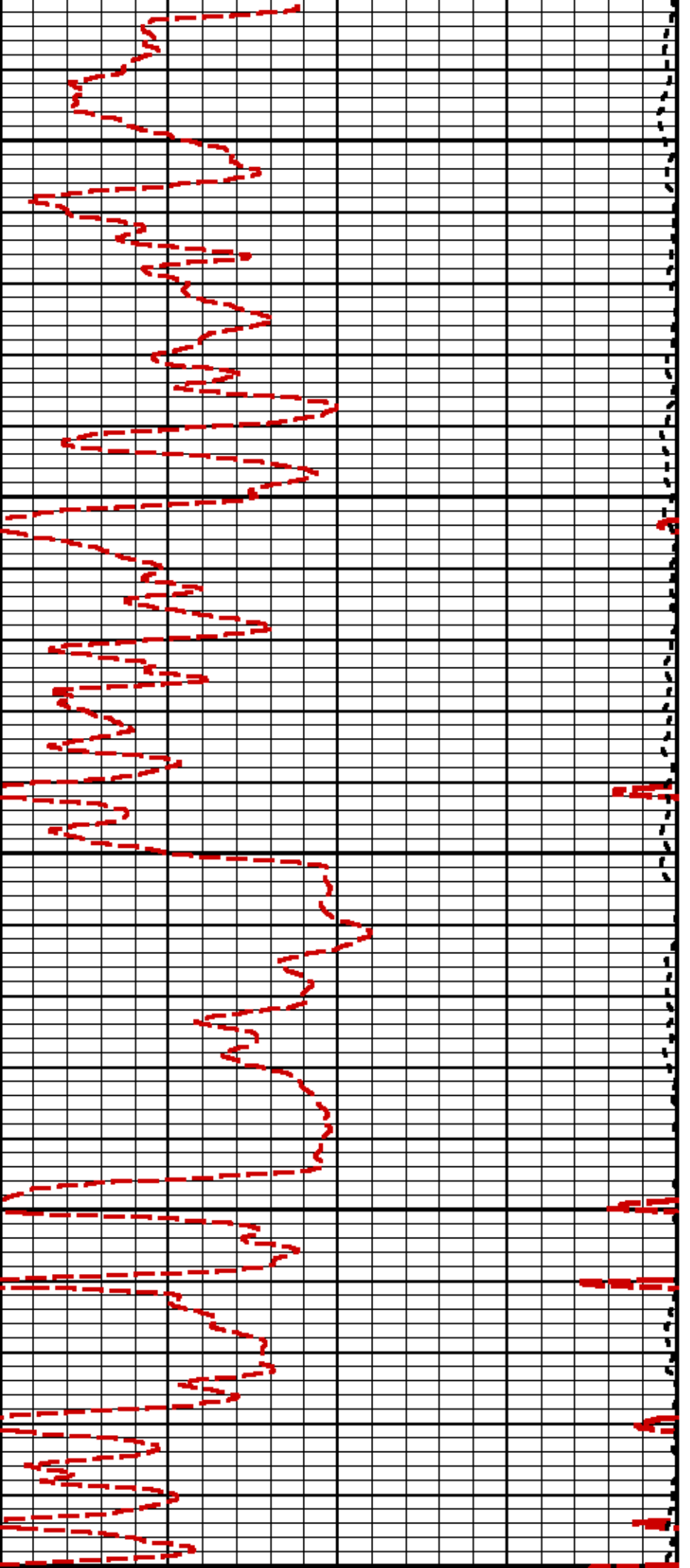




0068

0068

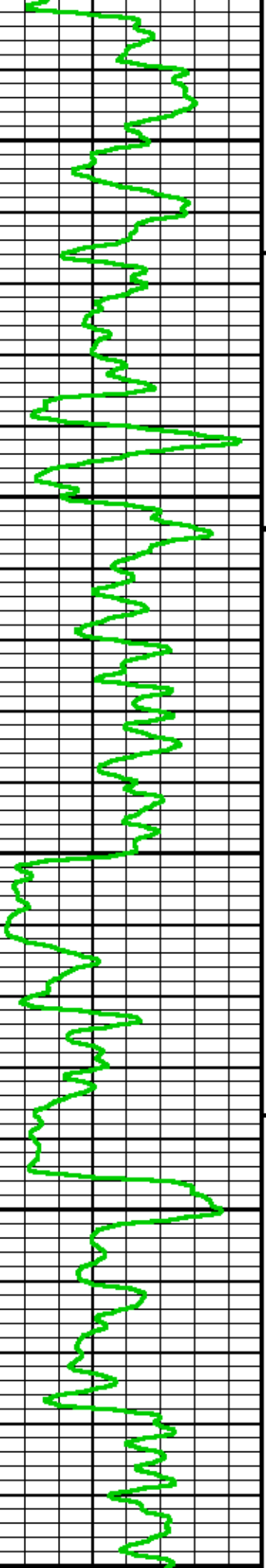


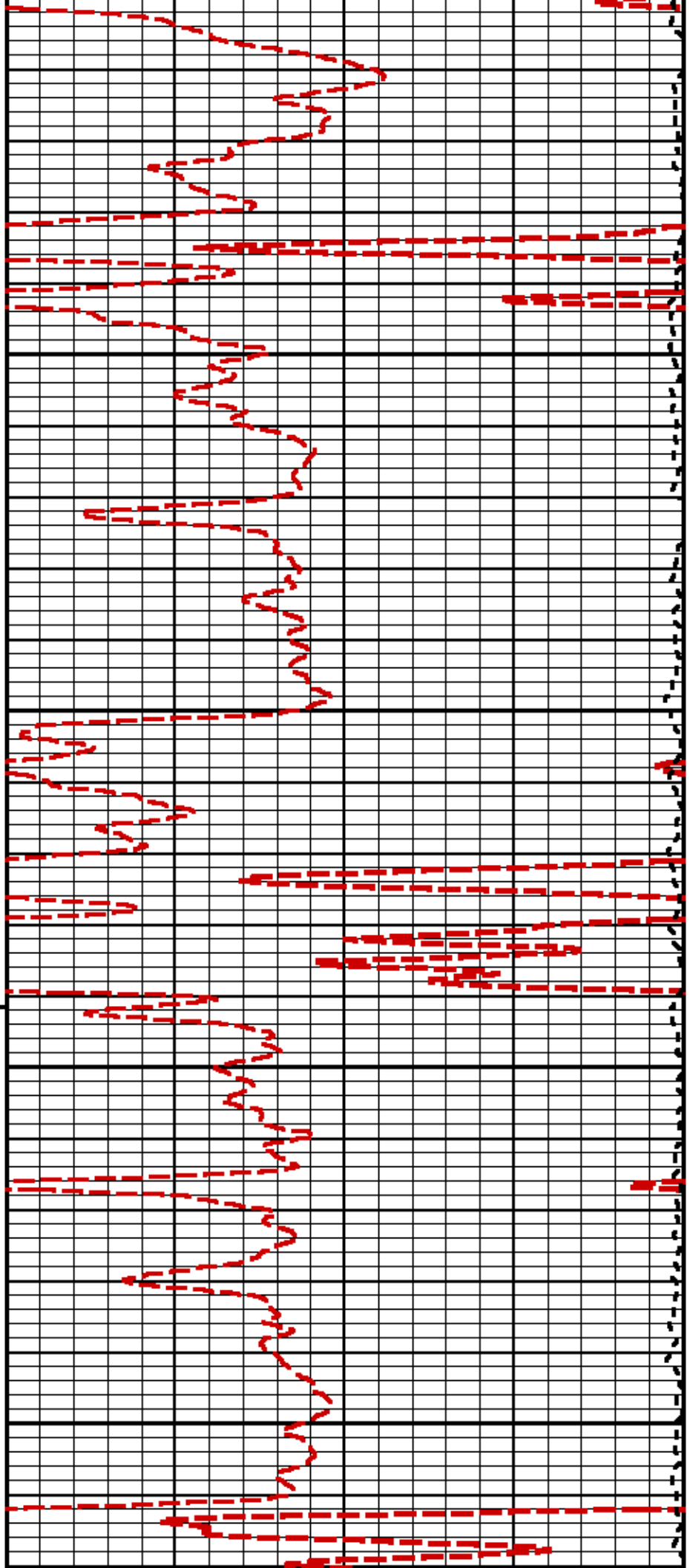


9000

9100

92

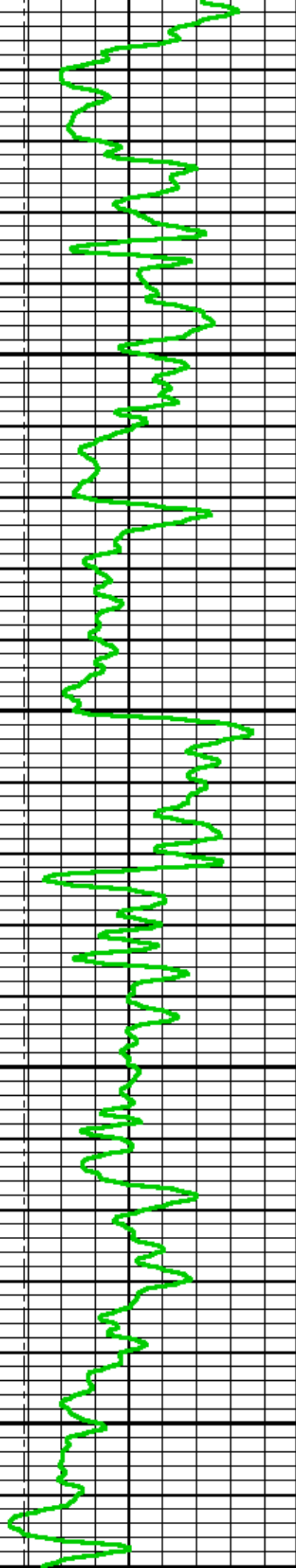


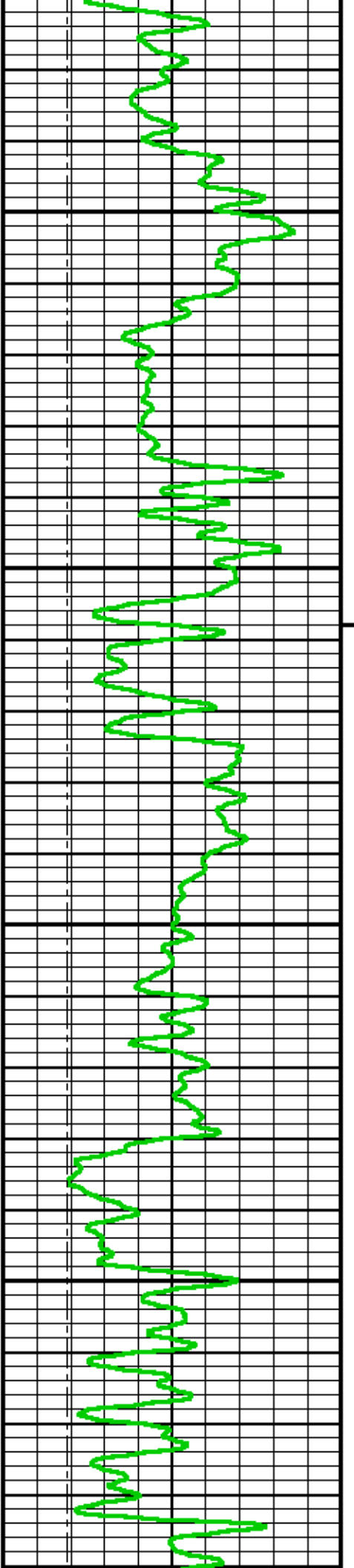


00

9300

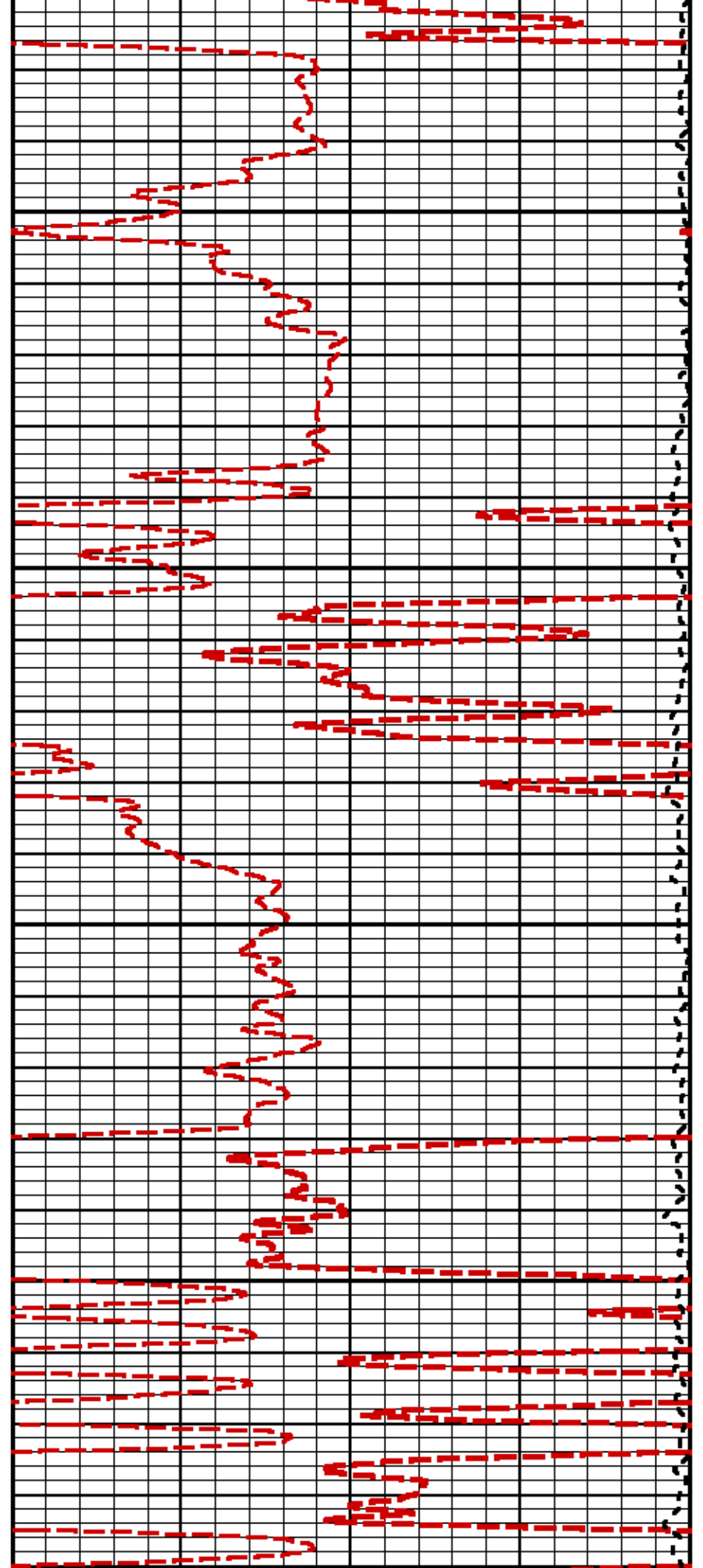
9400

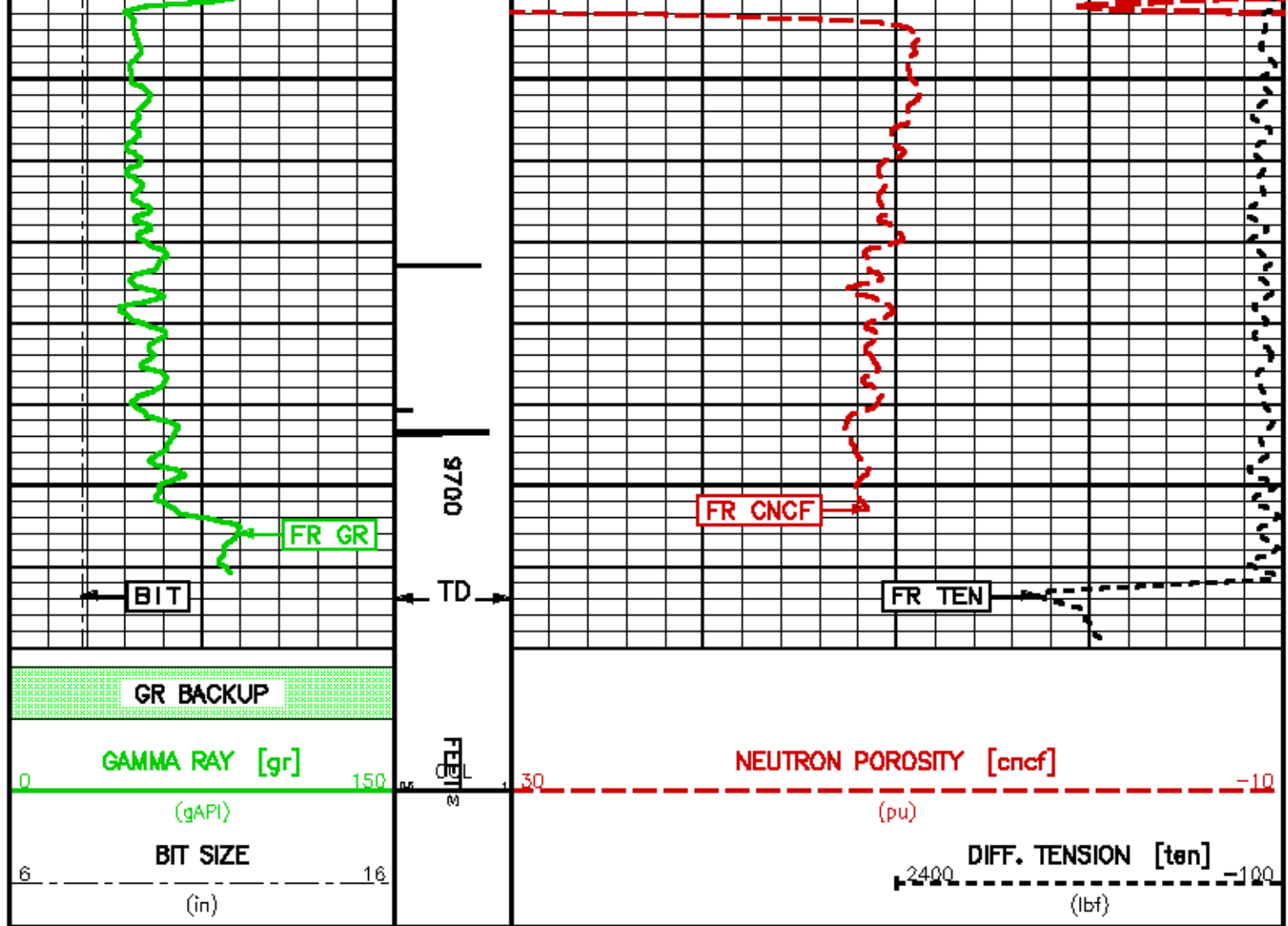




9500

9600





REPEAT LOG 5"/100FT SCALE

ECLIPS 6.01 Feb 21, 2008  
 Updates: 1,40,41 Patches: 1,2,4,5,6

Fri Feb 12 11:29:43 2010

Perplt /main/62

Cplot

Pdf\_Cpp /main/16

Fileview 5.42

PARAMETER AND FILTER SUMMARY REPORT

FILE: /dat1a/1830/k970a/c04.prm  
 LOGGING MODE: DEPTH DIRECTION: UP  
 TOP DEPTH: 8438.000 ft BOTTOM DEPTH: 8721.277 ft

SYMMETRIC FILTER

MEASUREMENT TYPE	PARAMETER	VALUE	UNITS	INTERVAL (ft)
GR LOW RES	FILTER (.1)	medium (1)		TOP BOTTOM
GR MED RES	FILTER ()	medium (1)		" "
TENSION	FILTER ()	medium (1)		" "
CN LOW RES	FILTER (.1)	medium (1)		" "
CN MED RES	FILTER ()	medium (1)		" "

BOREHOLE & CEMENT

MEASUREMENT TYPE	PARAMETER	VALUE	UNITS	INTERVAL (ft)
------------------	-----------	-------	-------	---------------

CASING - BOREHOLE & CEMENT VOLUME	CASING O.D.	4.500	1in	TOP	BOTTOM
	CASING THICKNESS	0.250	1in	"	"
BIT SIZE	BIT SIZE	7.875	1in	"	"
BOREHOLE CORR DIAMETER SOURCE	CALIPER/FIXED DIA. (cnbh*)	USE FIXED SIZE		"	"
BOREHOLE CORR DIAMETER	FIXED DIAMETER (cnbh*)	7.875	1in	"	"

### ACCELERATION PROCESSING

MEASUREMENT TYPE	PARAMETER	VALUE	UNITS	INTERVAL (ft)
ACCEL CORR SWITCH	ACCEL DEPTH CORR	CORRECTION ON		TOP BOTTOM

### CN PROCESSING

MEASUREMENT TYPE	PARAMETER	VALUE	UNITS	INTERVAL (ft)
CN MATRIX	2436 MATRIX	SANDSTONE		TOP BOTTOM
CN BOREHOLE CORRECTION	SALINITY	881	ppm	" "
	BOREHOLE CORRECTION	CN		" "
CN CASING & CEMENT CORRECTION	CORRECTION	CN		" "
	BIT SIZE BEHIND CSG	7.875	1in	" "

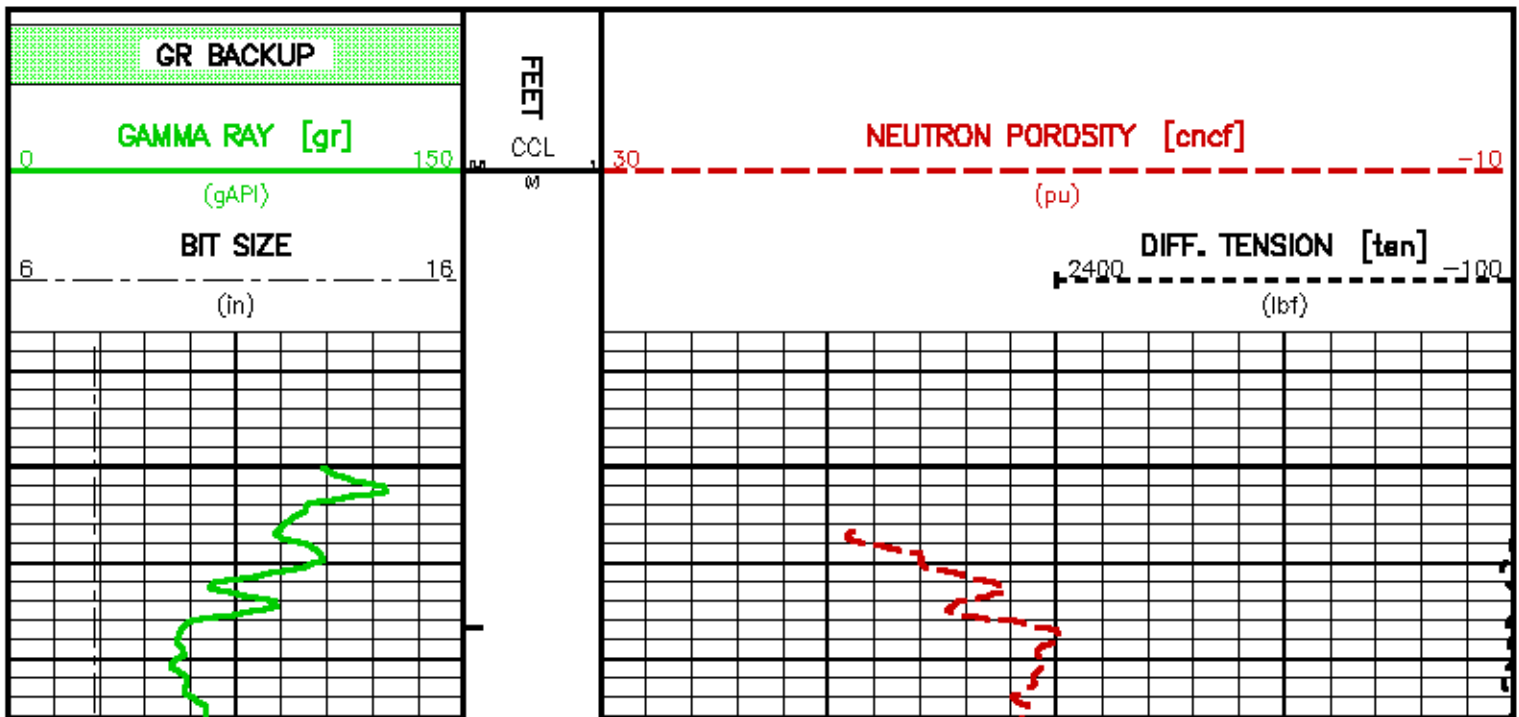
### CURVE DESCRIPTION REPORT

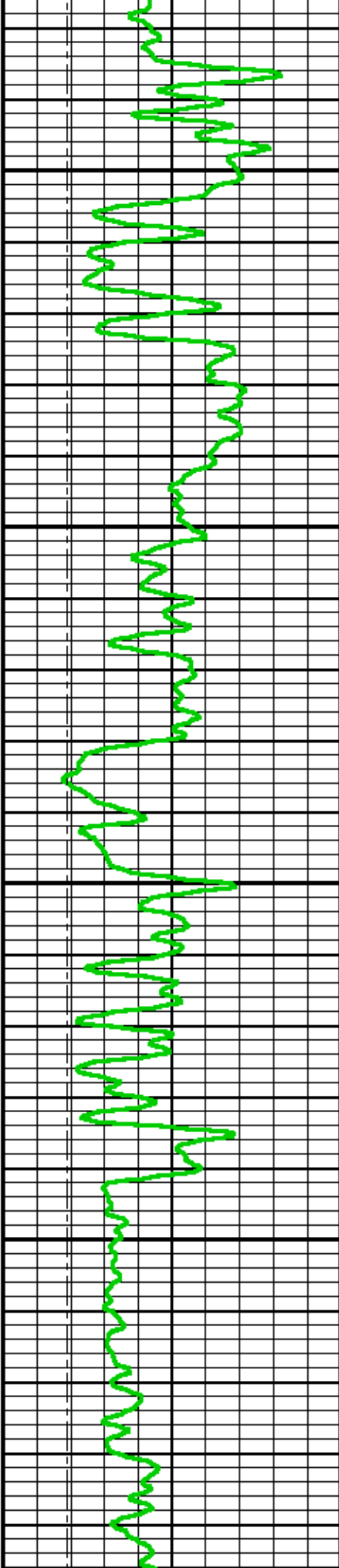
CURVE NAME	CURVE ALIAS	CREATION DATE	CURVE DESCRIPTION
F1:BIT	BIT	Feb 12 10:02:08 2010	BIT SIZE
F1:CCL	CCL	Feb 12 10:02:08 2010	CASING COLLAR LOCATOR
F1:CNCF	CNCF	Feb 12 10:02:08 2010	FIELD NORMALIZED COMPENSATED NEUTRON POROSITY
F1:GR	GR	Feb 12 10:02:08 2010	GAMMA RAY
F1:TEN	TEN	Feb 12 10:02:08 2010	DIFFERENTIAL TENSION

### CURVE MEASURE POINT OFFSET

CURVE	OFFSET (ft)	CURVE	OFFSET (ft)	CURVE	OFFSET (ft)	CURVE	OFFSET (ft)
BIT	0.00	CNCF	1.50	TEN	0.00		
CCL	19.00	GR	7.50				

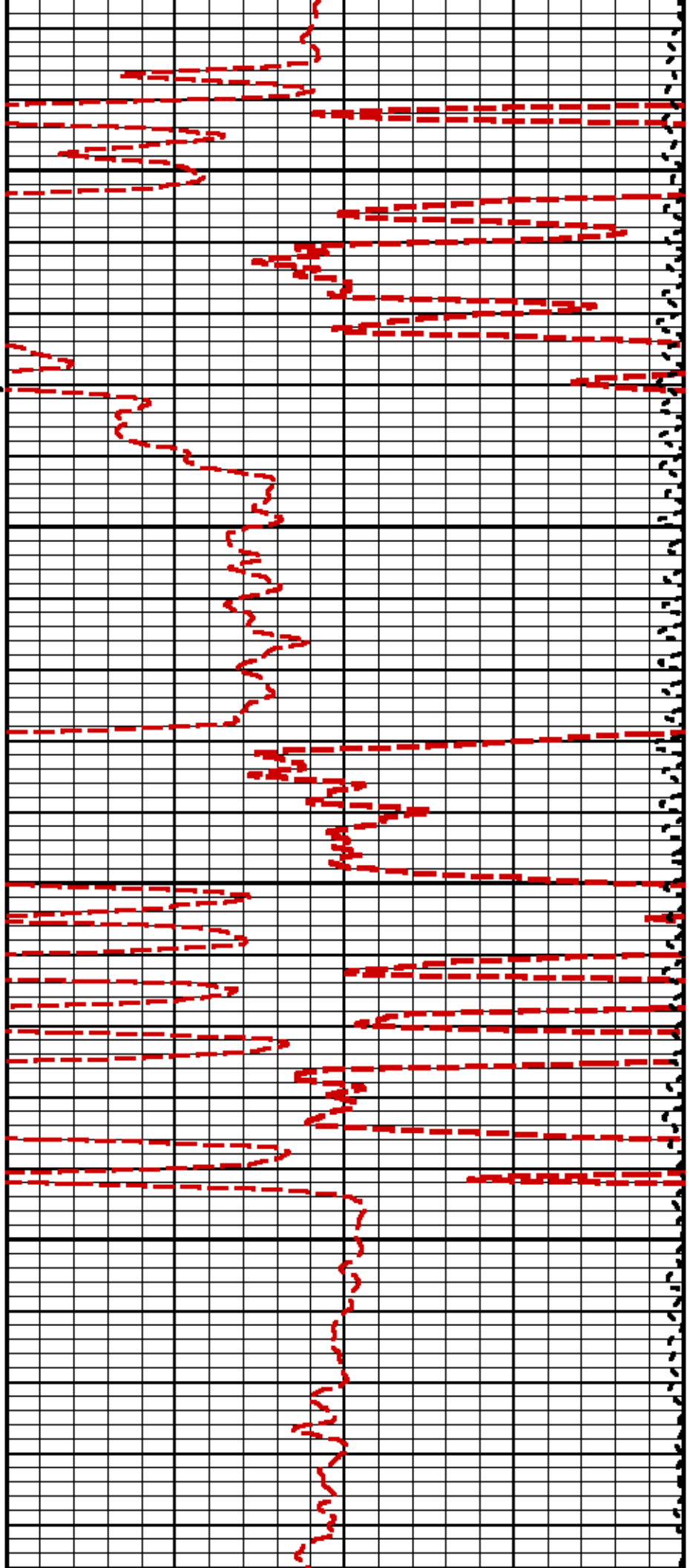
Presentation : cpu1:cn\_repeat.pdf [5"/100' Scale]  
 Plot Interval : 8437.5 - 8720 Feet  
  
 Data File 1 : F1 : cpu1:/data/1630/k870alc04\_repeat.xtf  
 Created On : Feb 12 10:02:08 2010  
 Company : MARATHON OIL COMPANY  
 Well : 596-29C-16  
 Field : GRAND VALLEY  
 File Interval : 0 - 8720 Feet  
 Oct : k870alc

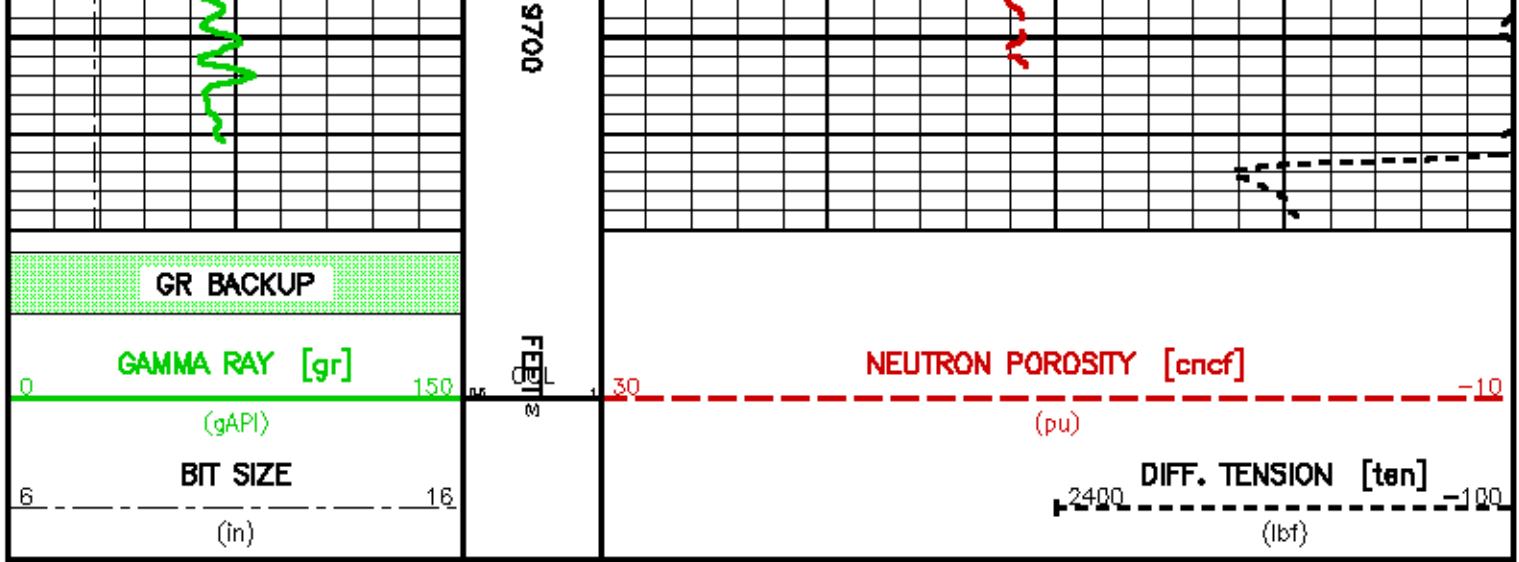




9500

9600





## CALIBRATION / VERIFICATION SUMMARY

Source File: /cd11a/1830/1879cals.a1

### GR PRIMARY CALIBRATION SUMMARY

Tool #: 3518XG 10081348      DATE/TIME PERFORMED: Mon Feb 8 16:29:59 2010

Unit #: 3882TD HL6670      Jig Series: 4702NK DA-321

Background	Calibrator ON	Jig Value	Mult	Background	Calibrator ON
		(gAPI)		(gAPI)	(gAPI)
129.56	550.74	185	0.257	33.23	215.23
		<small>0.256</small>	<small>0.258</small>		

### GR BEFORE LOG VERIFICATION SUMMARY

TOOL #: 3518XG 10081348      DATE/TIME PERFORMED: Fri Feb 12 11:50:38 2010      DAYS SINCE CAL: 3

UNIT #: 3882TD HL6670      Jig: INTRNL N/A

Counts	TEMP	HV	
		(degF)	(V)
976.67	124.99	1362.48	
<small>929.00</small>	<small>1027.00</small>	<small>539.00</small>	
<small>1237.00</small>	<small>1512.00</small>		

### GR AFTER LOG VERIFICATION SUMMARY

TOOL #: 3518XG 10081348      DATE/TIME PERFORMED: Fri Feb 12 11:51:29 2010      DAYS SINCE CAL: 3

UNIT #: 3882TD HL6670      Jig: INTRNL N/A

Counts	TEMP	HV	
		(degF)	(V)
976.67	121.27	1369.13	
<small>929.00</small>	<small>1027.00</small>	<small>539.00</small>	
<small>1237.00</small>	<small>1512.00</small>		

### CN PRIMARY CALIBRATION SUMMARY

TOOL #: 2436XA 10124368      DATE/TIME PERFORMED: Mon Feb 8 16:57:04 2010

UNIT #: 3882TD HL6670      CALIBRATOR #: 2437XB 112674      SOURCE #: 4718XA ON-897

SSN	LSN	SSN/LSN	MCF	CNRATIO	CN
DT CPS	DT CPS				PU
4611.90	804.98	5.72937	1.00133	5.73700	25.241
		<small>0.99999</small>	<small>1.00000</small>		

### CN BEFORE LOG VERIFICATION SUMMARY

TOOL #: 2436XA 10124368      DATE/TIME PERFORMED: Fri Feb 12 11:50:35 2010      DAYS SINCE CAL: 3

UNIT #: 3682TD HL6670 CALIBRATOR #: INTRNL N/A

SSN DT CPS	LSN DT CPS	SSN/LSN	TEMP (degF)	HV (V)	LV (V)
992.07	994.44	0.99762 0.85000 1.05000	136.2 280.4	1368.8 1368.0 1450.0	4.599 4.300 5.000

**CN AFTER LOG VERIFICATION SUMMARY**

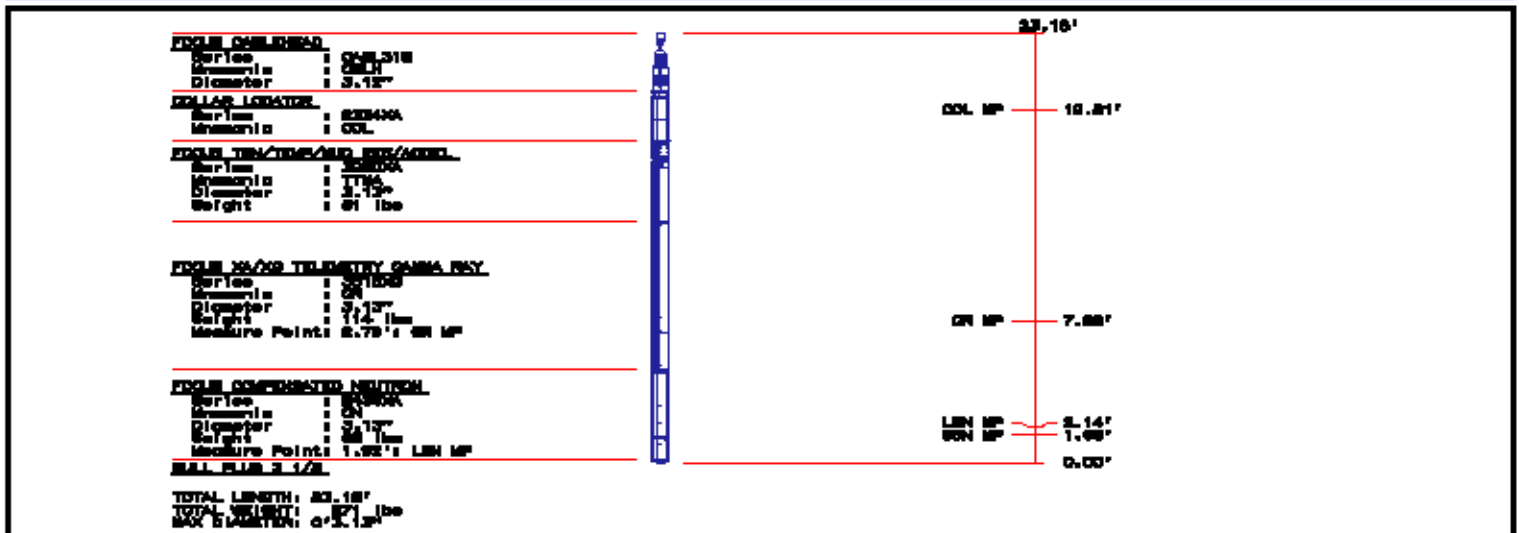
TOOL #: 2438XA 10124366 DATE/TIME PERFORMED: Fri Feb 12 11:51:33 2010 DAYS SINCE CAL: 3

UNIT #: 3682TD HL6670 CALIBRATOR #: INTRNL N/A

SSN DT CPS	LSN DT CPS	SSN/LSN	TEMP (degF)	HV (V)	LV (V)
992.07	994.44	0.99762 0.85000 1.05000	132.9 280.4	1368.8 1368.0 1450.0	4.599 4.300 5.000

**INSTRUMENT CONFIGURATION**

Source File: cdlls/1830/cd70air-his



	<b>COMPANY</b> <u>MARATHON OIL COMPANY</u> <b>WELL</b> <u>596-29C-16</u> <b>FIELD</b> <u>GRAND VALLEY</u> <b>COUNTY</b> <u>GARFIELD</u> STATE <u>COLORADO</u>	<b>FILE NO:</b> <u>1830</u> <b>API NO:</b> <u>05045181920000</u>
	<b>LOCATION:</b> SHL: 1761' FSL & 1395' FWL SEC <u>28</u> TWP <u>5S</u> RGE <u>96W</u>	<b>ELEVATIONS:</b> KB <u>8204 FT</u> DF <u>8203 FT</u> GL <u>8180 FT</u>
	DATE <u>11-Feb-2010</u>	