



SUPERIOR
Hays,
Kansas

MICRO
LOG

Company	MULL DRILLING COMPANY, INC.		
Well	CHAMPLIN - ALDRICH #4		
Field	CHEYENNE WELLS		
County	CHEYENNE	State	COLORADO
Location:	API # : 05-017-07678-0000 1200' FNL & 1000' FEL NE/4 - NE/4		Other Services CDL/CNL DIL/SONIC
Permanent Datum	GROUND LEVEL	Elevation	4273
Log Measured From	KELLY BUSHING 13' A.G.L.	Elevation	K.B. 4286 D.F. 4284 G.L. 4273
Drilling Measured From	KELLY BUSHING		
SEC 33	TWP 13S	RGE 44W	
Date	10/3/09		
Run Number	TWO		
Depth Driller	5515		
Depth Logger	5529		
Bottom Logged Interval	5506		
Top Log Interval	3600		
Casing Driller	13 3/8"@445'		
Casing Logger	440		
Bit Size	7 7/8		
Type Fluid in Hole	CHEMICAL MUD	CHLORIDES 2,500 PPM	
Density / Viscosity	9.1/56		
pH / Fluid Loss	9.0/8.8		
Source of Sample	FLOWLINE		
Rm @ Meas. Temp	.800@92F		
Rmf @ Meas. Temp	.600@92F		
Rmc @ Meas. Temp	.960@92F		
Source of Rmf / Rmc	MEASUREMENT		
Rm @ BHT	.566@130F		
Time Circulation Stopped	5 HOURS		
Time Logger on Bottom	6:15 P.M.		
Maximum Recorded Temperature	130F		
Equipment Number	0836		
Location	HAYS, KANSAS		
Recorded By	JEFF LUEBBERS		
Witnessed By	PHIL ASKEY		

<<< Fold Here >>>

All interpretations are opinions based on inferences from electrical or other measurements and we cannot and do not guarantee the accuracy or correctness of any interpretation, and we shall not, except in the case of gross or willful negligence on our part, be liable or responsible for any loss, costs, damages, or expenses incurred or sustained by anyone resulting from any interpretation made by any of our officers, agents or employees. These interpretations are also subject to our general terms and conditions set out in our current Price Schedule.

Comments

THANK YOU FOR USING SUPERIOR WELL SERVICE HAYS, KANSAS (785) 628-6395
DIRECTIONS
CHEYENNE WELLS, CO., 4 1/4 N. ON HWY TO RD. "V", 1 E., 1/2 S., W. INTO
(NOTE) LTD REACHED ON SECOND PASS IS 13' DEEPER THAN ORIGINAL PASS

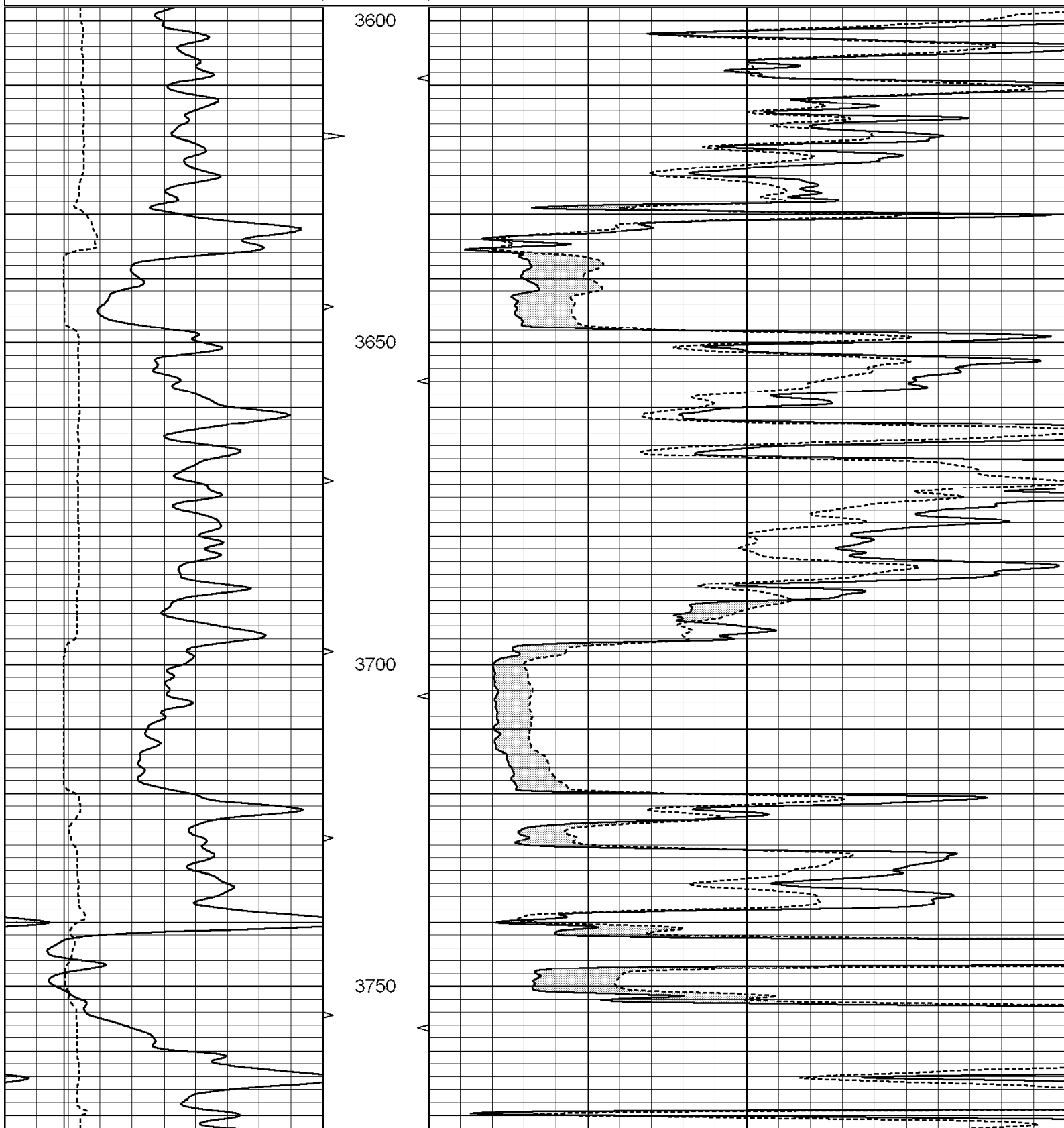


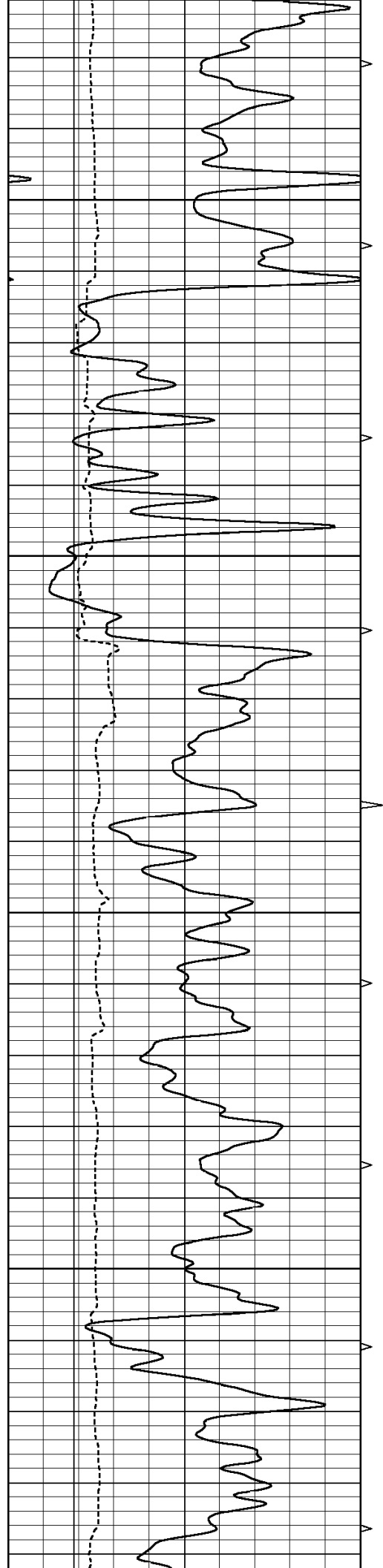
SUPERIOR
Hays,
Kansas

MAIN SECTION

Database File: 004355ddn.db
Dataset Pathname: pass6.3
Presentation Format: micro
Dataset Creation: Sat Oct 03 22:12:52 2009
Charted by: Depth in Feet scaled 1:240

0	GAMMA RAY (GAPI)	150	ABHV	0	MEL1.5 (Ohm-m)	20
6	CALIPER (in)	16	10 (ft3) 0	0	MEL2.0 (Ohm-m)	20
			TBHV			
			0 (ft3) 10			



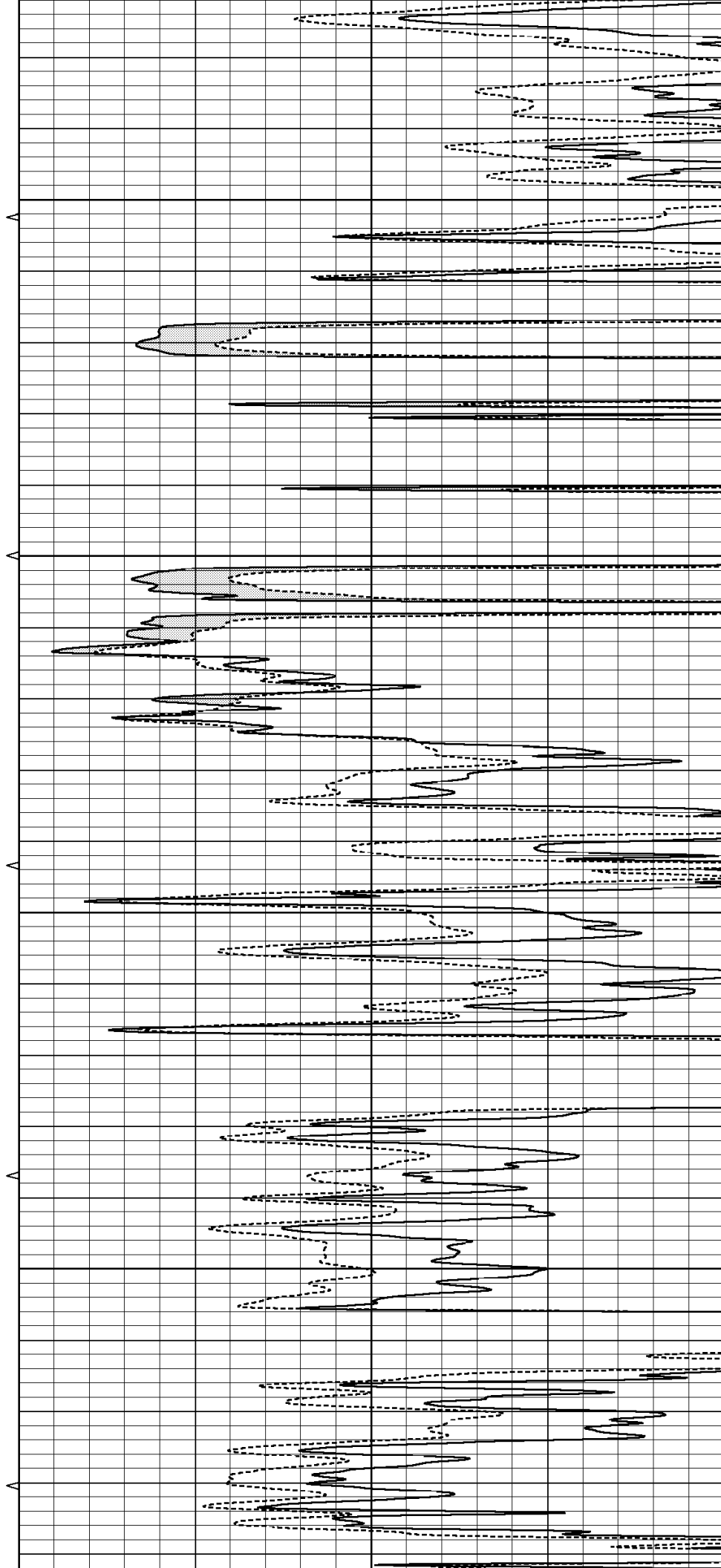


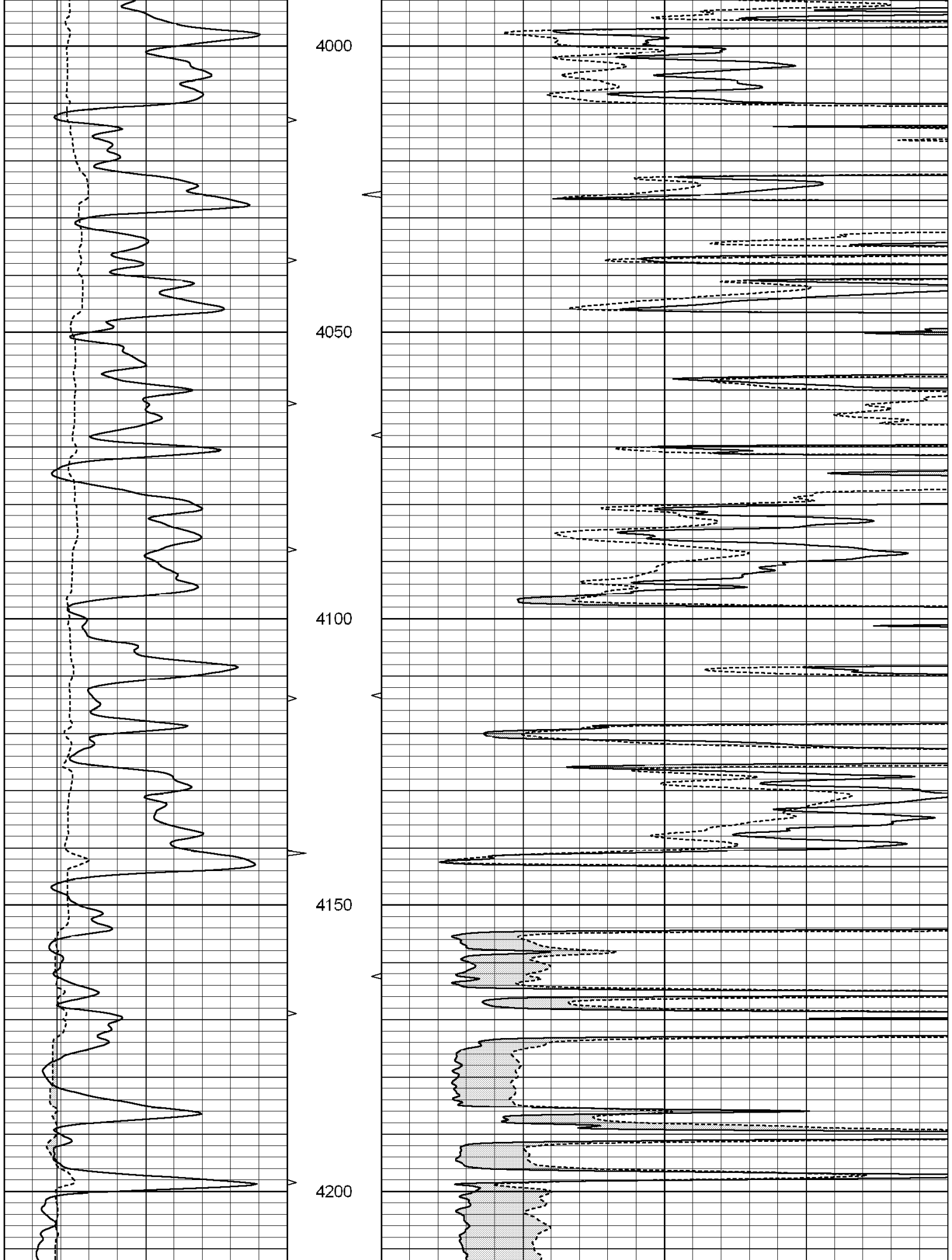
3800

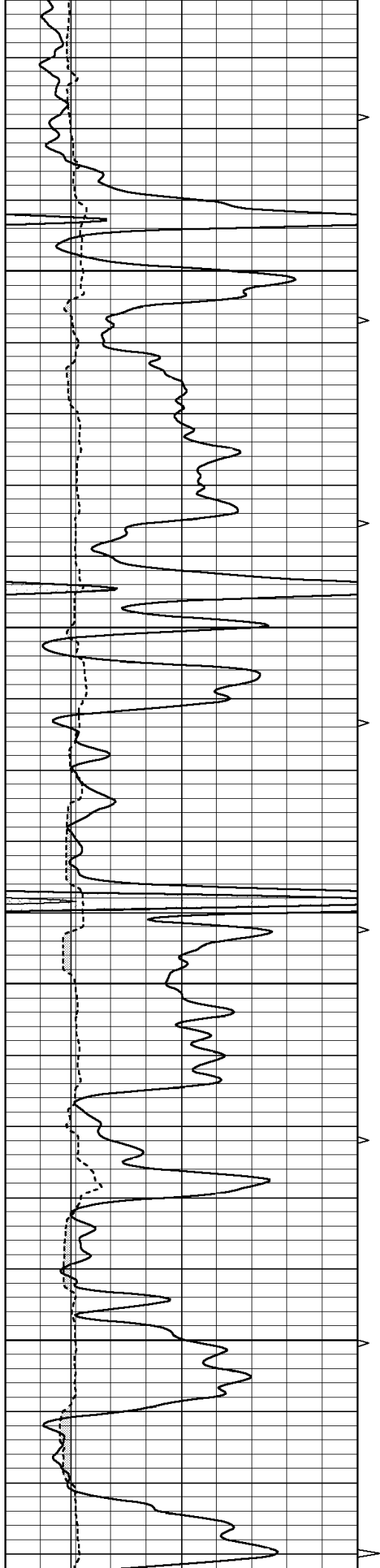
3850

3900

3950





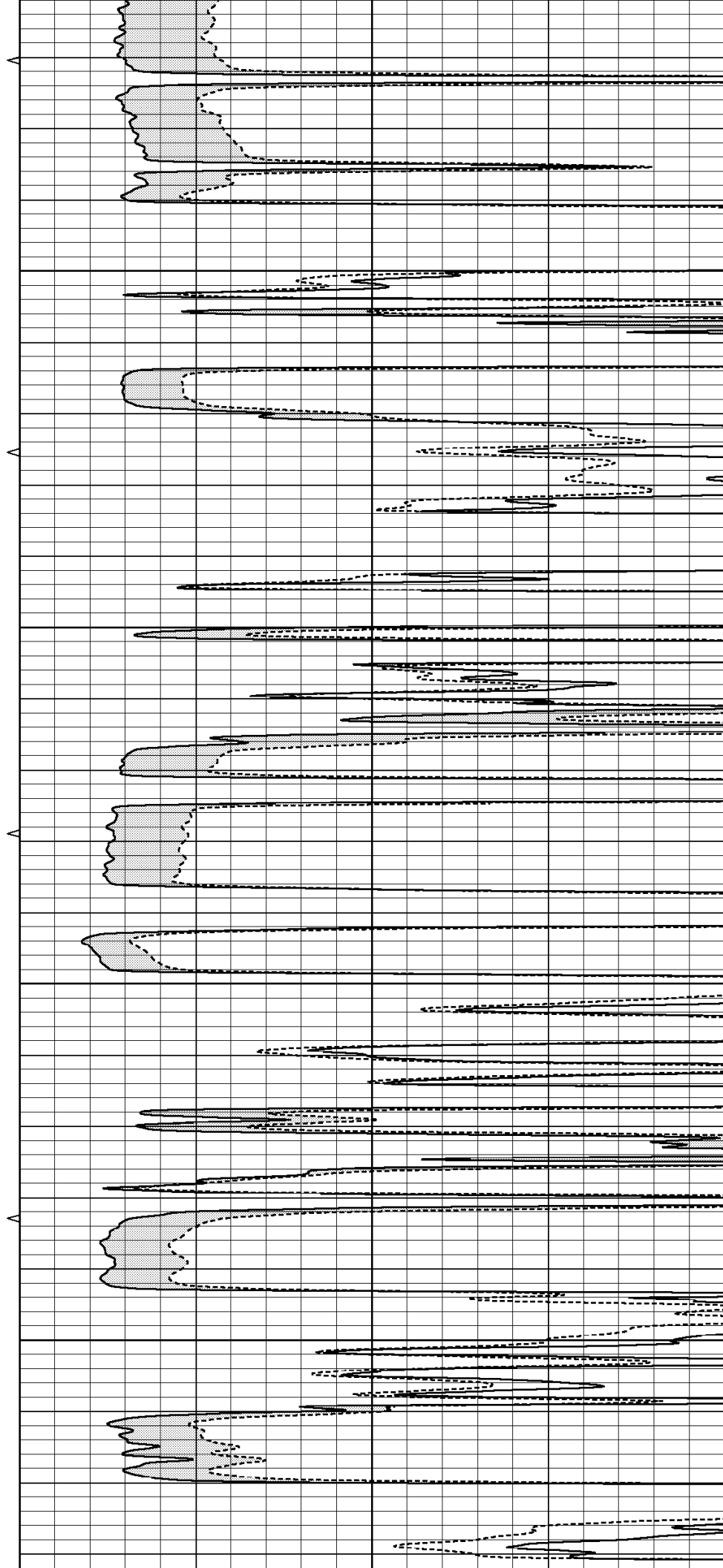


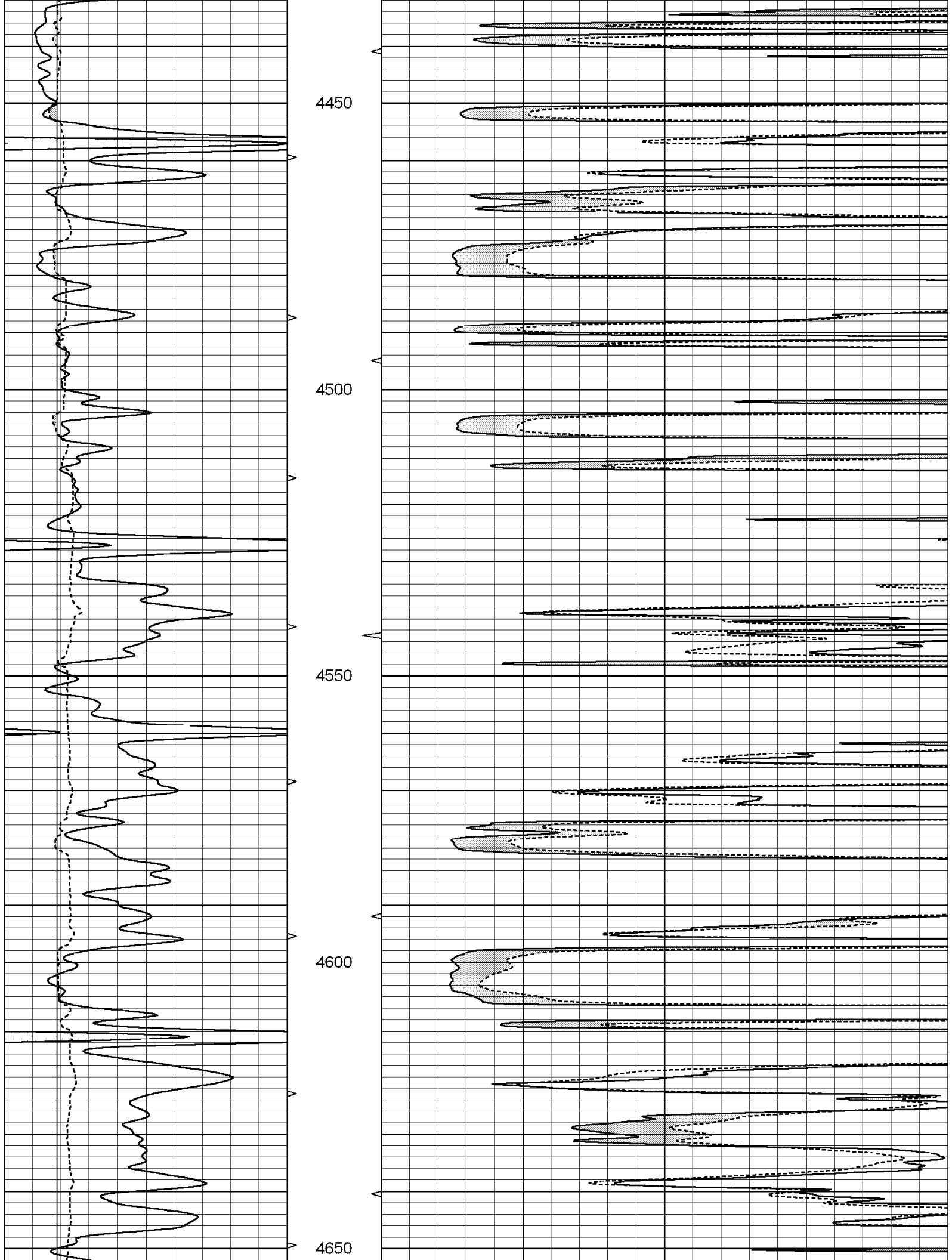
4250

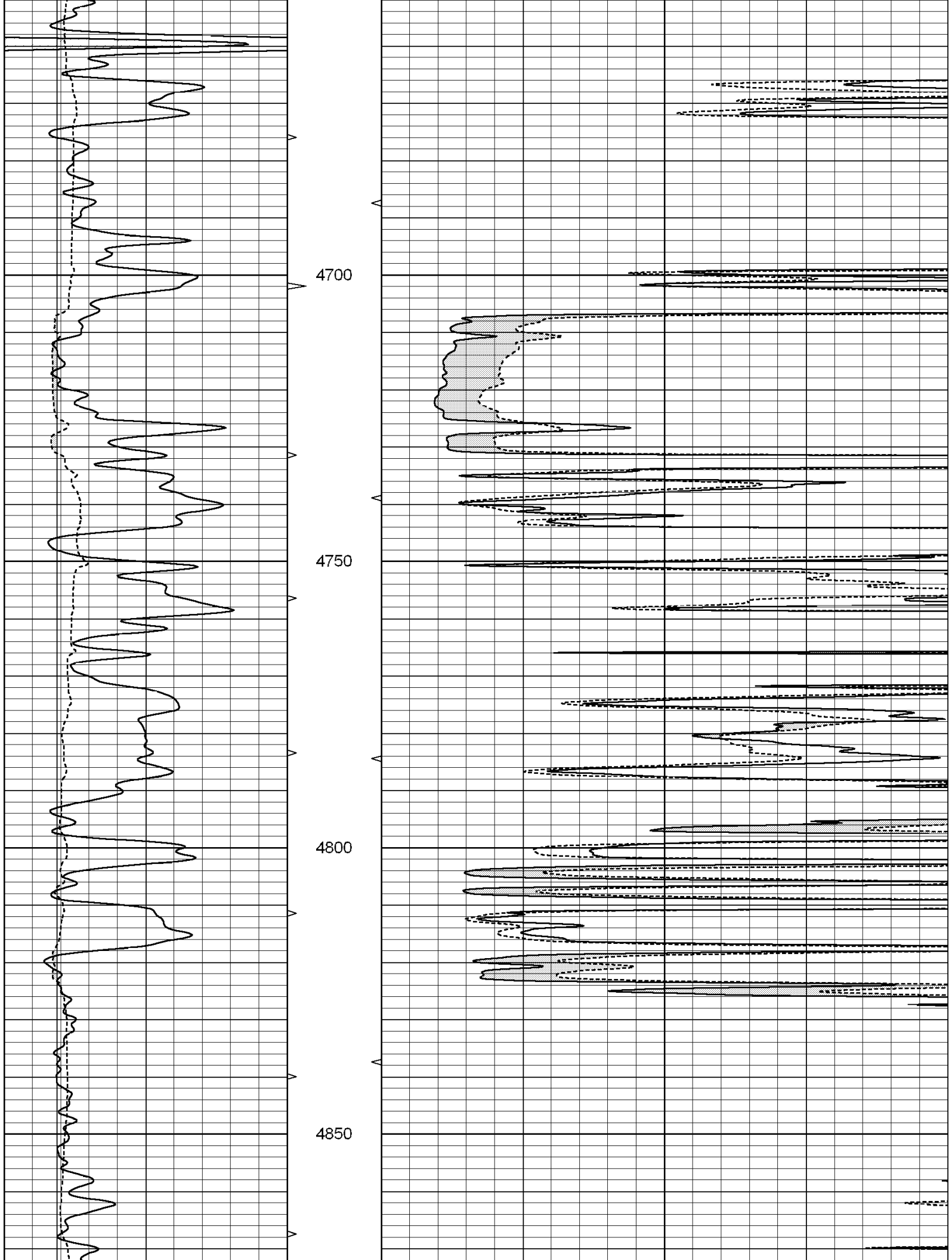
4300

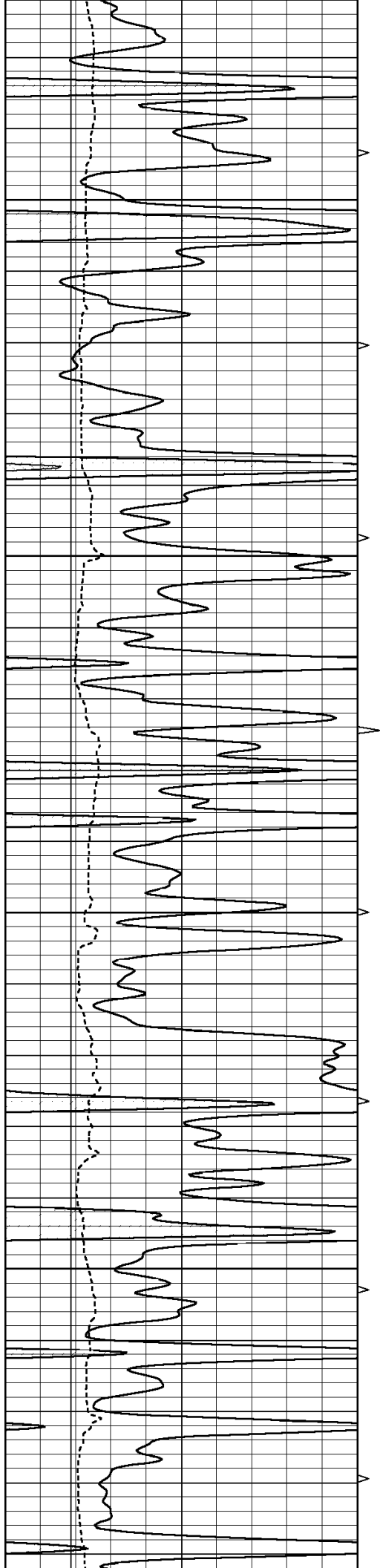
4350

4400







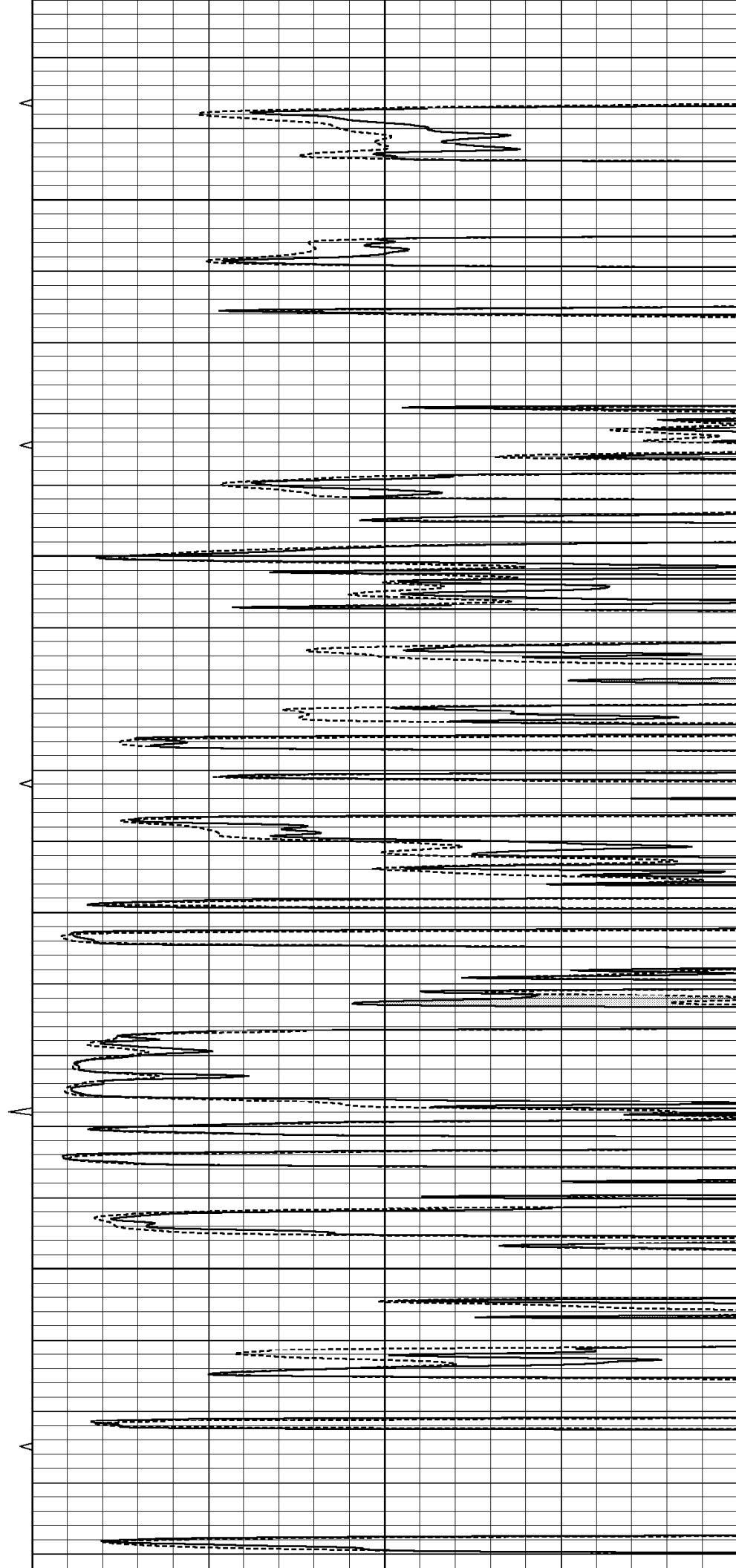


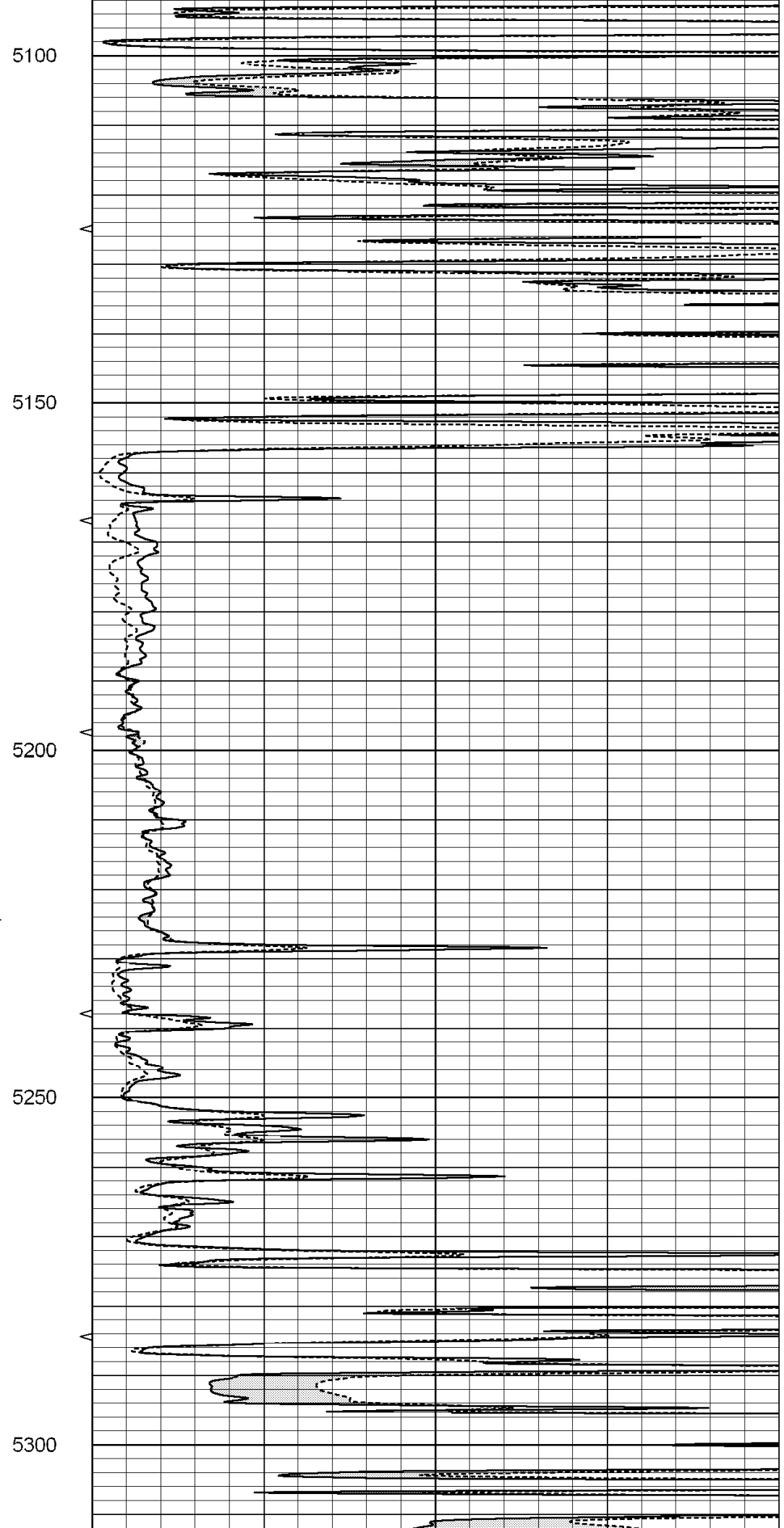
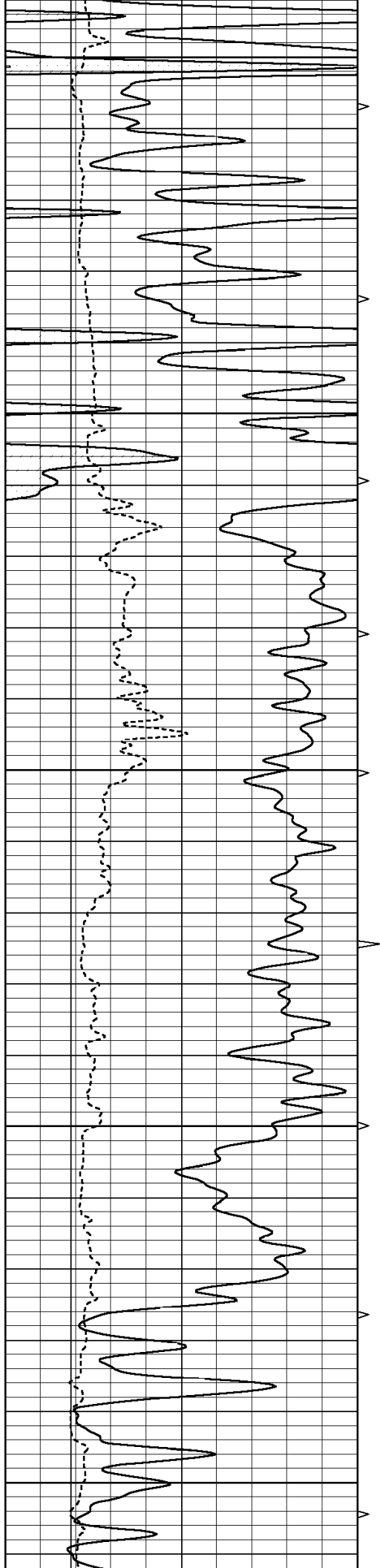
4900

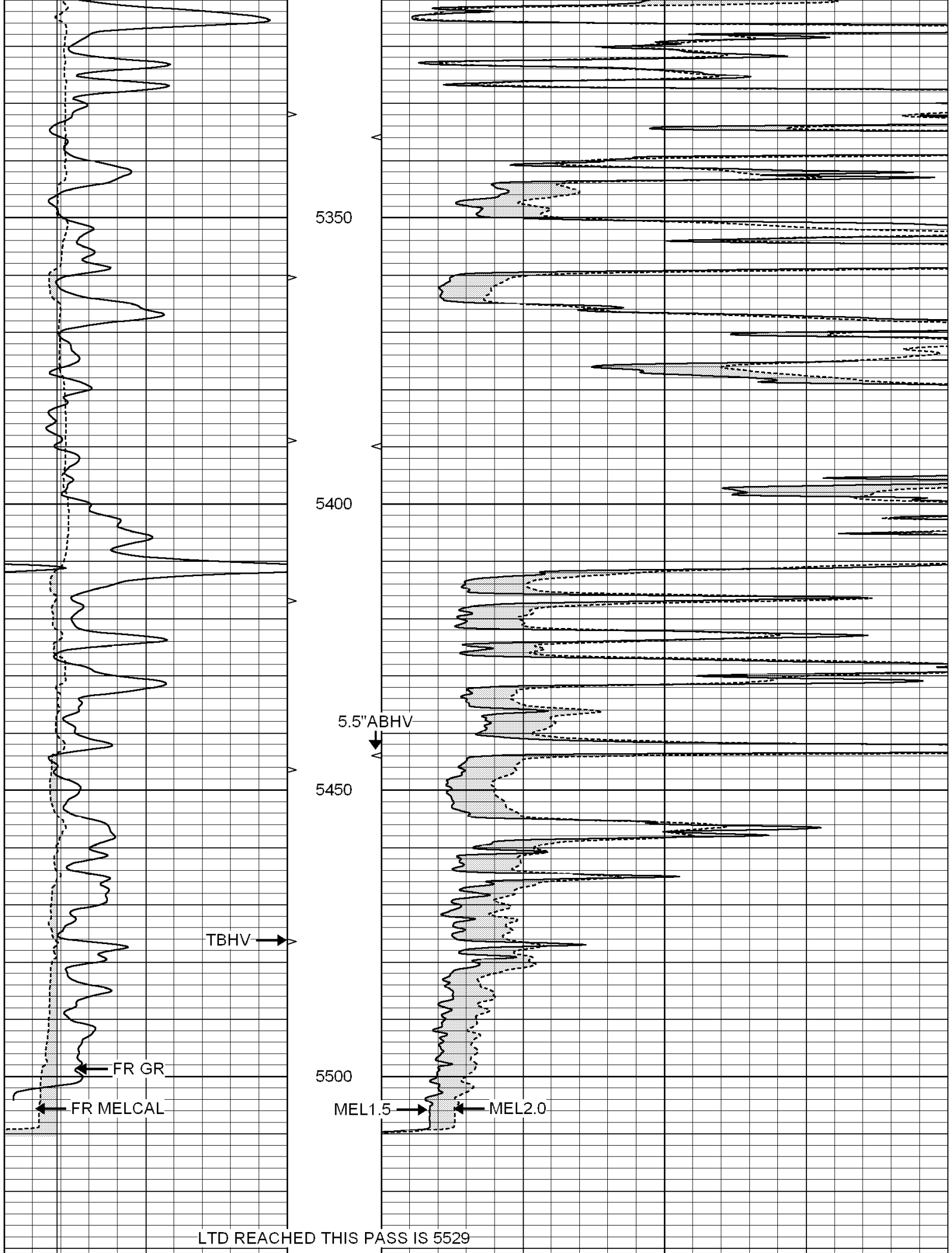
4950

5000

5050







0	GAMMA RAY (GAPI)	150	ABHV	0	MEL1.5 (Ohm-m)	20
6	CALIPER (in)	16	10 (ft3) 0	0	MEL2.0 (Ohm-m)	20
			TBHV			
			0 (ft3) 10			

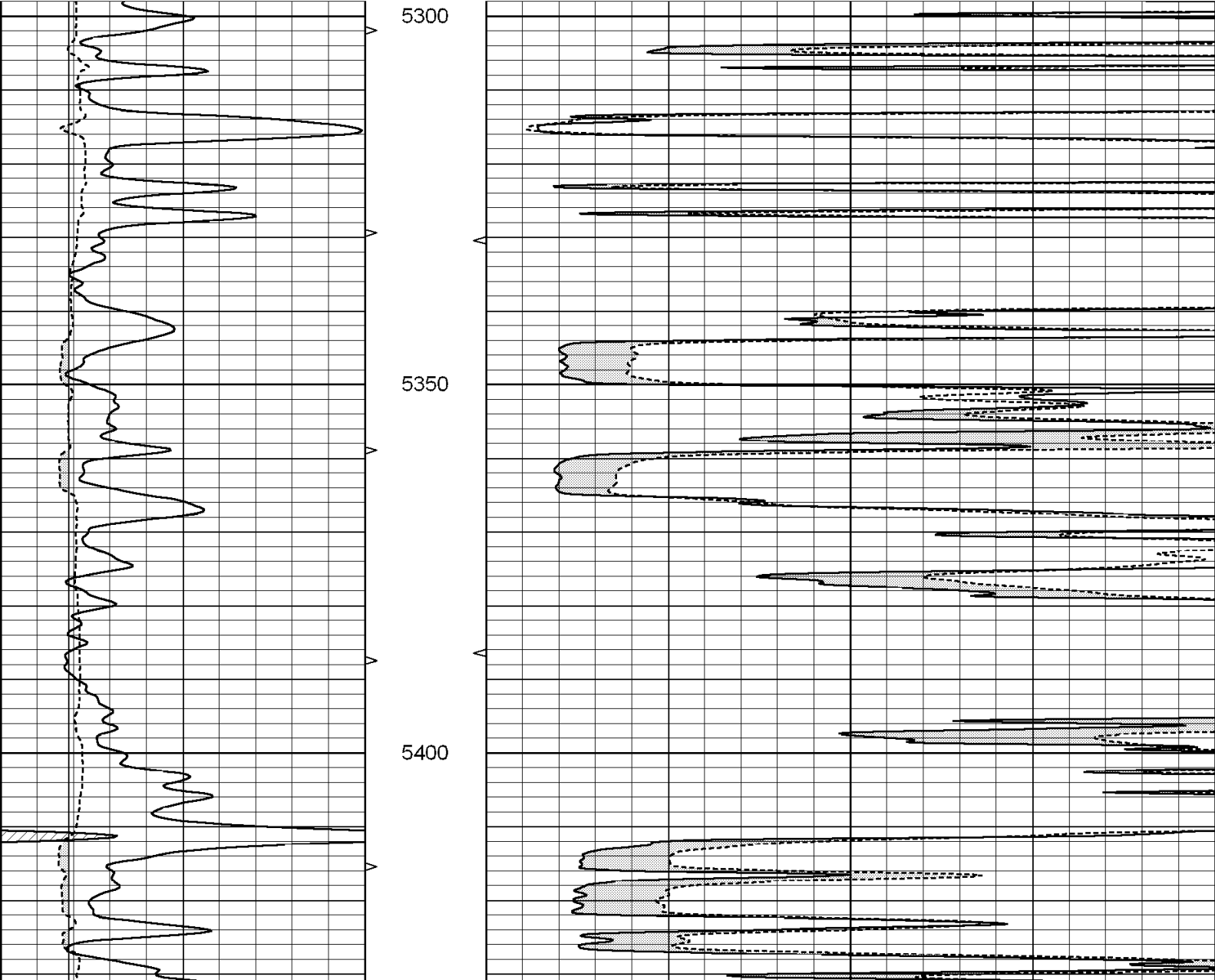


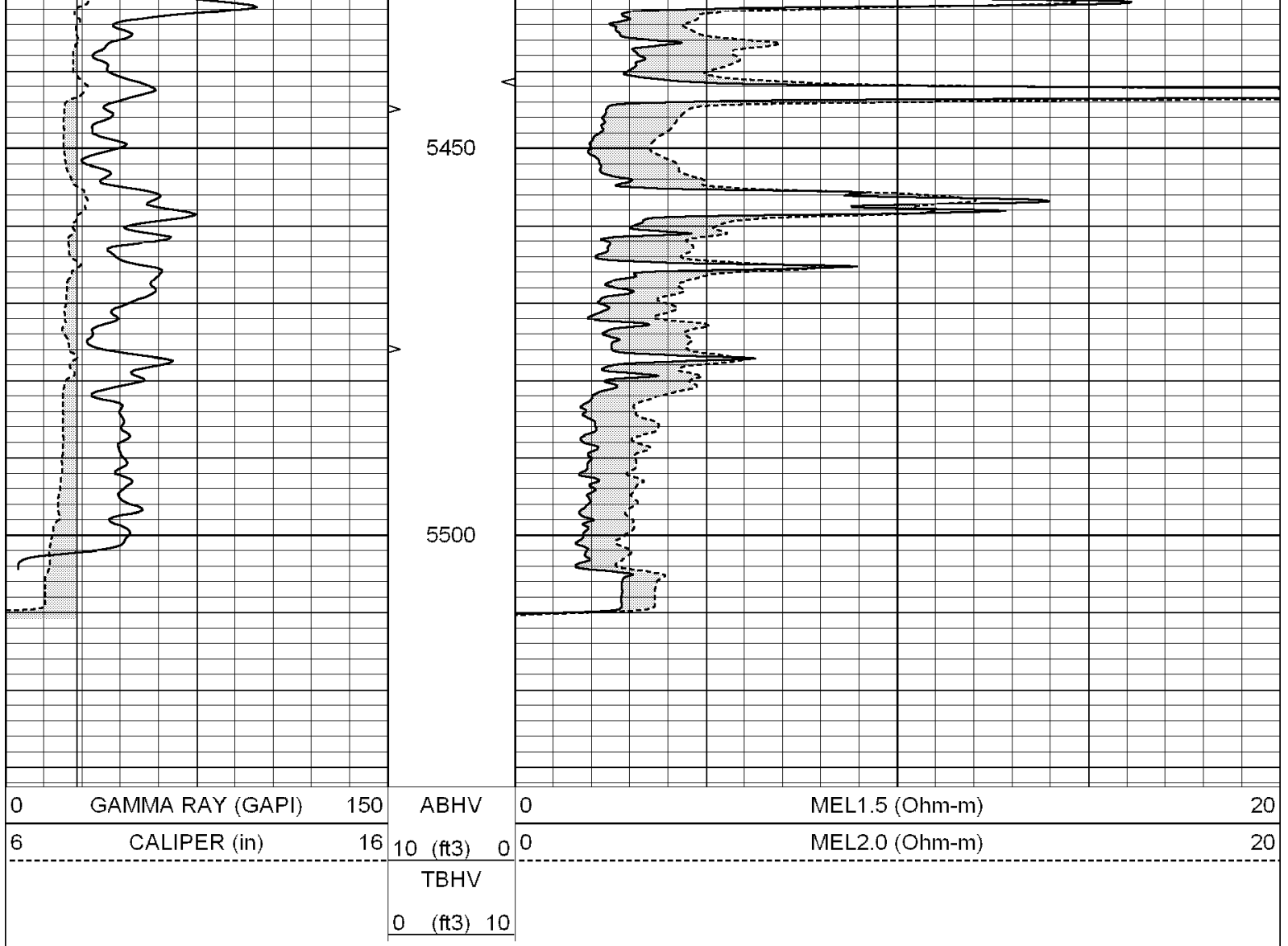
SUPERIOR
Hays,
Kansas

REPEAT SECTION

Database File:	004355ddn.db
Dataset Pathname:	pass5.3
Presentation Format:	micro
Dataset Creation:	Sat Oct 03 21:09:07 2009 by Calc Open-Cased 060407
Charted by:	Depth in Feet scaled 1:240

0	GAMMA RAY (GAPI)	150	ABHV	0	MEL1.5 (Ohm-m)	20
6	CALIPER (in)	16	10 (ft3) 0	0	MEL2.0 (Ohm-m)	20
			TBHV			
			0 (ft3) 10			





Calibration Report

Database File: 004355ddn.db
Dataset Pathname: pass6.3
Dataset Creation: Sat Oct 03 22:12:52 2009

MICRO Calibration Report

Serial Number: MICRO5
Tool Model: PROBE
Performed: Sat Oct 03 21:09:59 2009

Caliper Calibration: Gain=3.174 Offset=-2.439

References	Low Cal	High Cal
Readings	6.600	15.000
	2.848	5.494

1.5" Calibration: Gain=33.000 Offset=-1.500

References	Low Cal	High Cal
Readings	0.000	20.000
	0.027	0.996

2" Calibration: Gain=45.000 Offset=-2.000

References	Low Cal	High Cal
Readings	0.000	20.000
	0.020	0.807

Gamma Ray Calibration Report

Serial Number: GR3
Tool Model: OPEN
Performed: Sat Oct 03 21:09:55 2009

Calibrator Value: 200.0 GAPI

Background Reading: 3.0 cps
Calibrator Reading: 186.0 cps

Sensitivity: 1.0500 GAPI/cps