

Company: GENESIS GAS & OIL, LLC

Well: FLETCHER GULCH 4-13

Field: WILDCAT

County: RIO BLANCO State: COLORADO

CEMENT BOND LOG  
GAMMA RAY  
COLLARS/TEMPERATURE/PRESSURE

County: RIO BLANCO  
Field: WILDCAT  
Location: 505' FNL & 1762' FEL  
Well: FLETCHER GULCH 4-13  
Company: GENESIS GAS & OIL, LLC

LOCATION	
505' FNL & 1762' FEL	Elev.: K.B. 5676 IL G.L. 5667 ft D.F. 5677 ft
Permanent Datum:	GROUND LEVEL
Log Measured From:	KELLY BUSHING
Drilling Measured From:	KELLY BUSHING
API Serial No. 05 103 10695	Section 4
	Township 1N
	Range 100W

Logging Date	9-Sep-2000
Run Number	1
Depth Driller	2366 ft
Schlumberger Depth	2366 ft
Bottom Log Interval	2377.4 IL
Top Log Interval	100 IL
Casing Fluid Type	WATER
Salinity	
Density Fluid Level	8.34 lbm/gal 0 ft
BIT/CASING/TUBING STRING	
Bit Size From	7.875 in 0 ft
To	2366 ft
Casing/Tubing Size	6.500 in
Weight Grade	17 lbm/ft
From	0 ft
To	2366 ft
Maximum Recorded Temperatures	83. degF
Logger On Bottom	9 Sep 2008
Time	9:29
Unit Number	403
Recorded By	VERNAL SCOTTRACH
Witnessed By	ED MARTIN

PVT DATA

Oil Density	Run 1	Run 2
Water Salinity		
Gas Gravity		
B <sub>o</sub>		
B <sub>w</sub>		
1-B <sub>g</sub>		
Bubble Point Pressure		
Bubble Point Temperature		
Solution GOR		
Maximum Deviation		
CEMENTING DATA		
Primary/Squeeze	Primary	
Casing String No		
Lead Cement Type		
Volume		
Density		
Water Loss		
Additives		
Tail Cement Type		
Volume		
Density		
Water Loss		
Additives		
Expected Cement Top		

Logging Date	
Run Number	
Depth Driller	
Schlumberger Depth	
Bottom Log Interval	
Top Log Interval	
Casing Fluid Type	
Salinity	
Density Fluid Level	
BIT/CASING/TUBING STRING	
Bit Size From	
To	
Casing/Tubing Size	
Weight Grade	
From	
To	
Maximum Recorded Temperatures	
Logger On Bottom	
Time	
Unit Number	
Recorded By	
Witnessed By	

[illegible]

## DEPTH SUMMARY LISTING

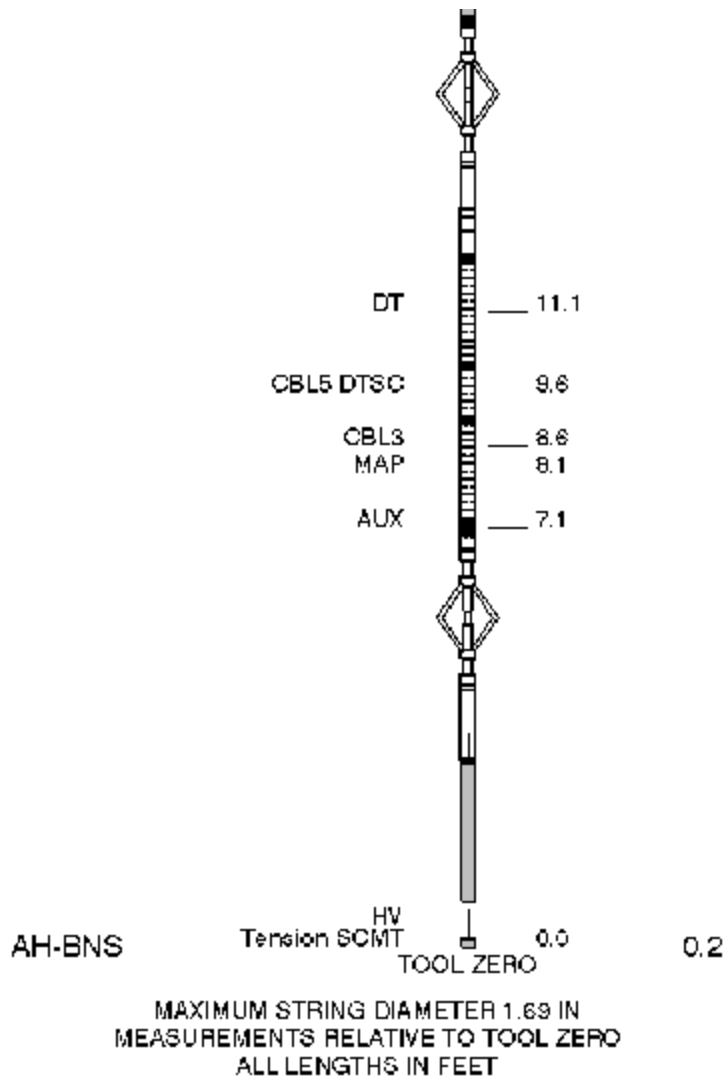
Depth System Equipment			Date Created: 9-SEP-2008 9:33:03
Depth Measuring Device	Tension Device	Logging Cable	
Type: IDW-B Serial Number: 6408 Calibration Date: 06-04-08 Calibrator Serial Number: 1 Calibration Cable Type: 1-23P Wheel Correction 1: -4 Wheel Correction 2: -4	Type: CMTD-C Serial Number: 5022 Calibration Date: 13-AUG-08 Calibrator Serial Number: 1 Calibration Gain: 0.90 Calibration Offset: -120.00	Type: 1-23P Serial Number: 16062 Length: 18300.00 FT Conveyance Method: Wireline Rig Type: LAND	
Depth Control Parameters			
Log Sequence:		Subsequent Trip To the Well	
Reference Log Name:		PLATFORM EXPRESS	
Reference Log Run Number:		1	
Reference Log Date:		04-AUG-08	
Subsequent Trip Down Log Correction:		1.50 FT	
Depth Control Remarks			
1. IDW USED AS PRIMARY DEPTH CONTROL 2. Z-CHART USED AS SECONDARY 3. 4. 5. 6.			

## DISCLAIMER

THE USE OF AND RELIANCE UPON THIS RECORDED-DATA BY THE HEREIN NAMED COMPANY (AND ANY OF ITS AFFILIATES, PARTNERS, REPRESENTATIVES, AGENTS, CONSULTANTS AND EMPLOYEES) IS SUBJECT TO THE TERMS AND CONDITIONS AGREED UPON BETWEEN SCHLUMBERGER AND THE COMPANY, INCLUDING: (a) RESTRICTIONS ON USE OF THE RECORDED DATA; (b) DISCLAIMERS AND WAIVERS OF WARRANTIES AND REPRESENTATIONS REGARDING COMPANY'S USE OF AND RELIANCE UPON THE RECORDED-DATA; AND (c) CUSTOMER'S FULL AND SOLE RESPONSIBILITY FOR ANY INFERENCE DRAWN OR DECISION MADE IN CONNECTION WITH THE USE OF THIS RECORDED-DATA.

OTHER SERVICES1 OS1: NONE OS2: OS3: OS4: OS5:	OTHER SERVICES2 OS1: OS2: OS3: OS4: OS5:
REMARKS: RUN NUMBER 1	REMARKS: RUN NUMBER 2
LOG CORRELATED TO SCHLUMBERGER PEX LOG DATED 17-JUL-06	

TOTAL DEPTH 2286			
SHORT JOINT NONE			
TOP OF CEMENT-SURFACE			
MAX PRESSURE-989 PSI			
MAX TEMPERATURE-83 DEGF			
CREW: M. WOOD, A. DUNCAN, M. NUTTALL			
THANK YOU FOR CHOOSING SCHLUMBERGER			
RUN 1		RUN 2	
SERVICE ORDER #: ARZA 00041		SERVICE ORDER #:	
PROGRAM VERSION: 1500-309		PROGRAM VERSION:	
FLUID LEVEL: 0 ft		FLUID LEVEL:	
LOGGED INTERVAL	START	LOGGED INTERVAL	START
	STOP		STOP
EQUIPMENT DESCRIPTION			
RUN 1		RUN 2	
SURFACE EQUIPMENT			
WITM-A			
PSC 16MHZ			
DOWNHOLE EQUIPMENT			
MH-22			30.3
MH-22			
AH-38	Detail MT		28.8
	TelStatus		
	CTEM	28.5	
PSPT-A/B			28.5
PSC-A			
PSPT-B 859			
PSTC			
PBMS-B			
CQG F Mano			
RTD Thermometer			
GR	GR	24.8	
CCL			
PBMS			



**Schlumberger**

**MAIN PASS**

MAXIS Field Log

Company: GENESIS GAS & OIL, LLC

Well: FLETCHER GULCH 4-13

### Input DLIS Files

DEFAULT	MERGE_PSP_SCMT_011GUP	FN:1	PRODUCER	09-Sep-2008 19:19	2296.0 FT	87.0 FT
---------	-----------------------	------	----------	-------------------	-----------	---------

### Output DLIS Files

DEFAULT	SCMT_PSP_012PUP	FN:8	PRODUCER	09-Sep-2008 19:20	2296.0 FT	89.0 FT
---------	-----------------	------	----------	-------------------	-----------	---------

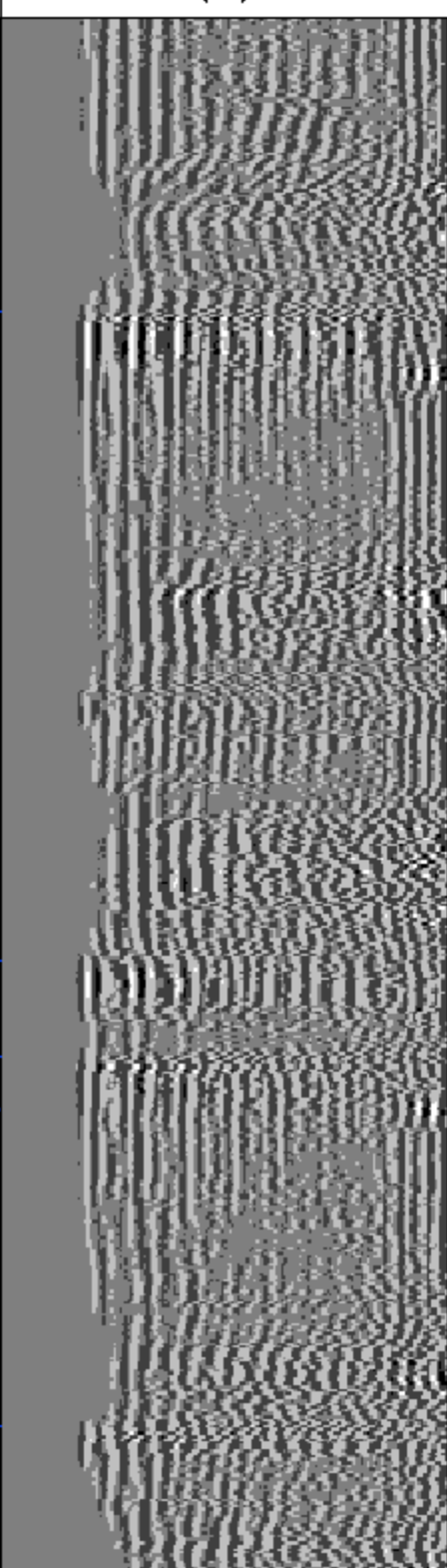
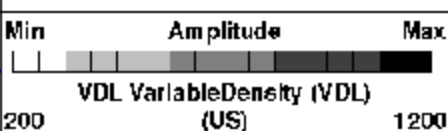
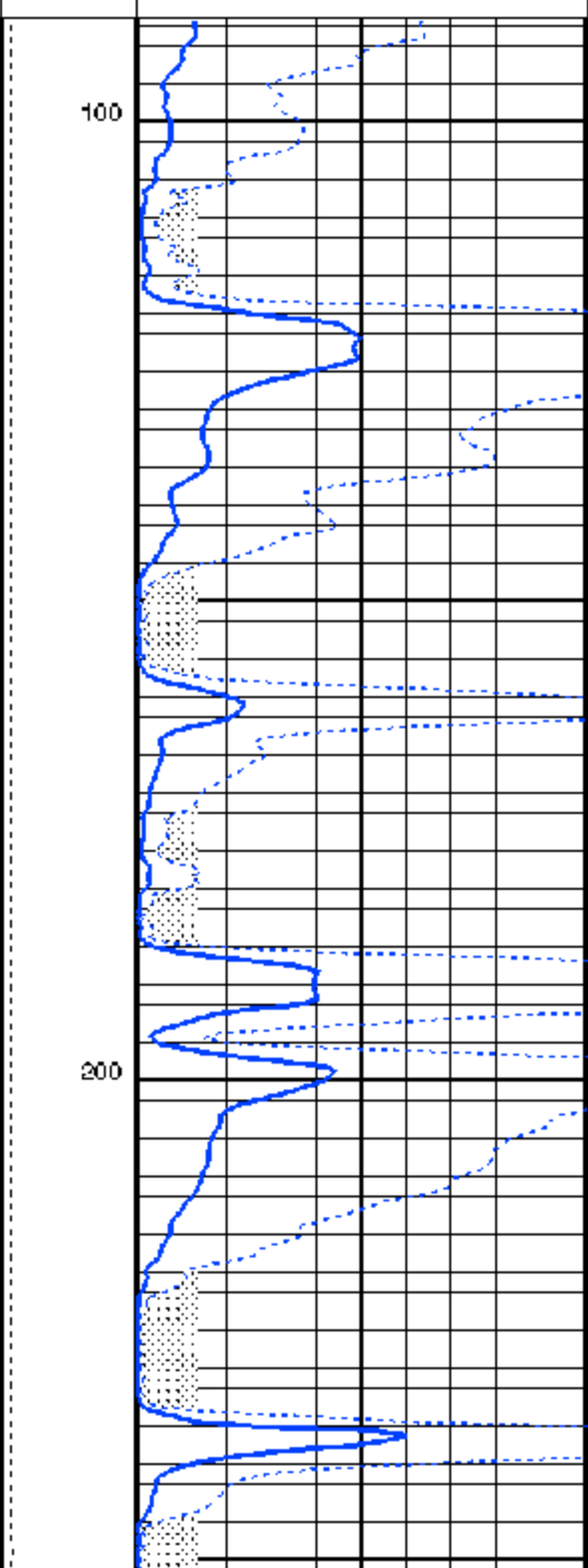
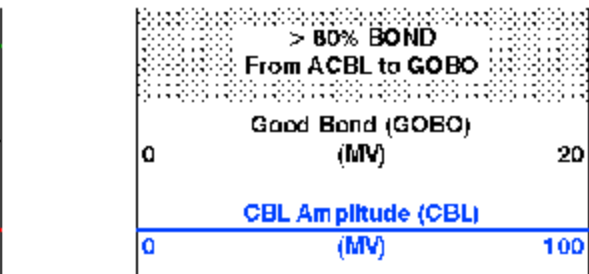
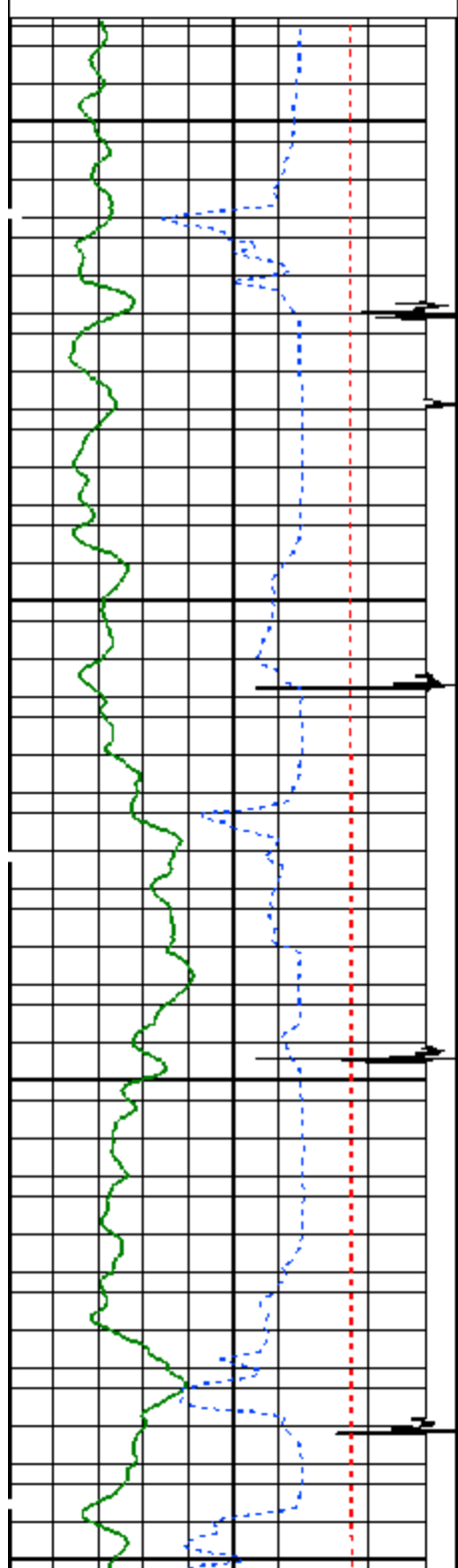
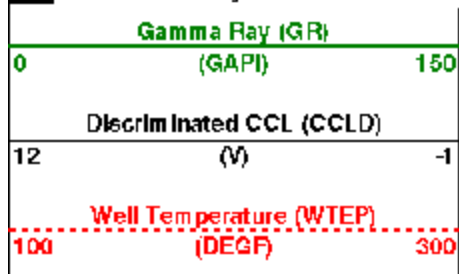
**OP System Version: 14C0-302**

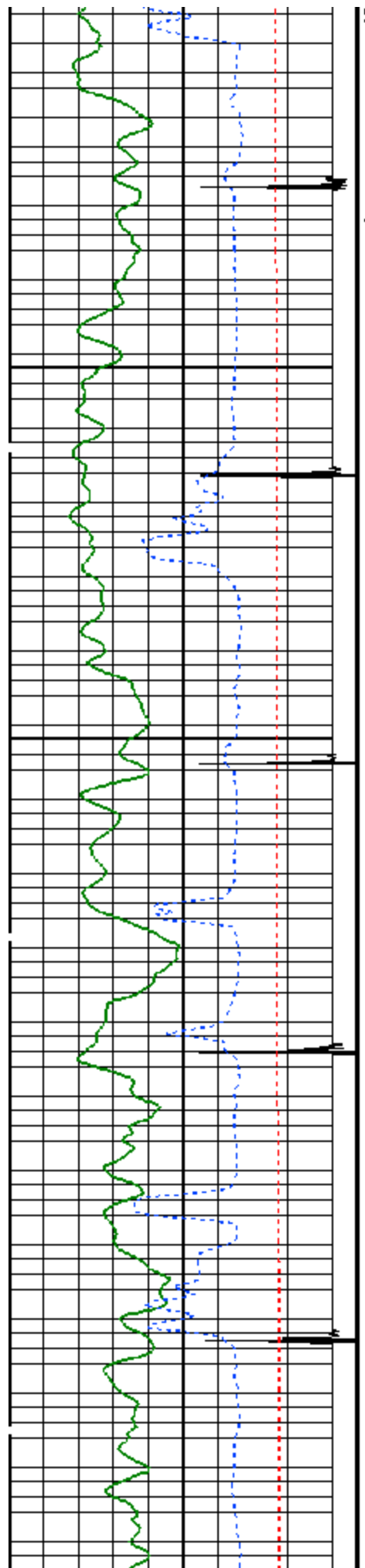
MCM

SCMT-CA	14C0-302	PSPT-A/B	14C0-302
---------	----------	----------	----------

PIP SUMMARY

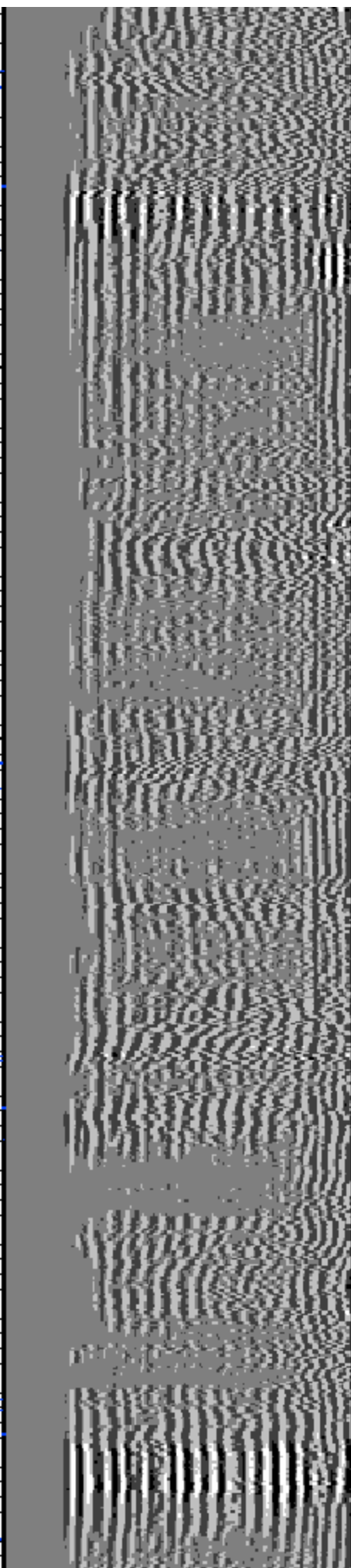
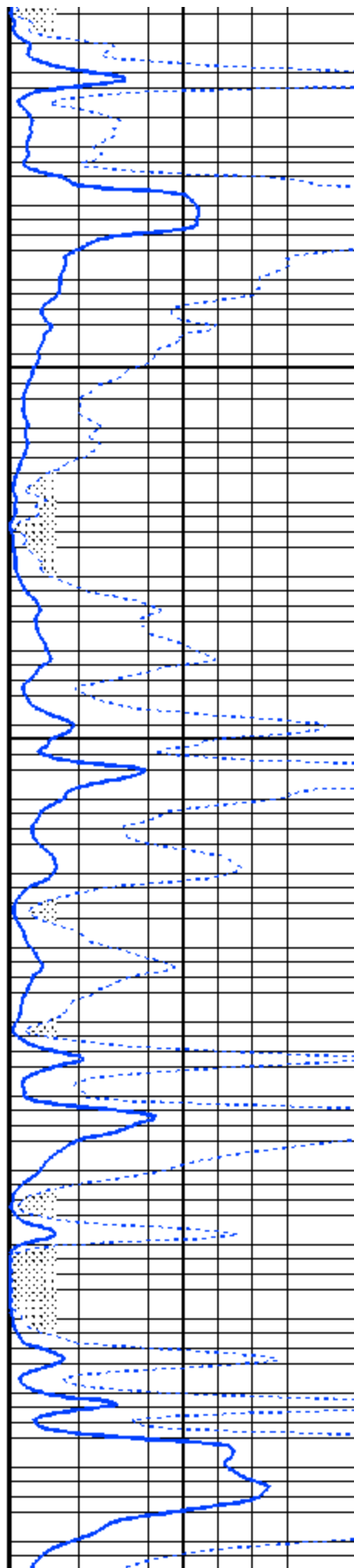
Time Mark Every 60 S

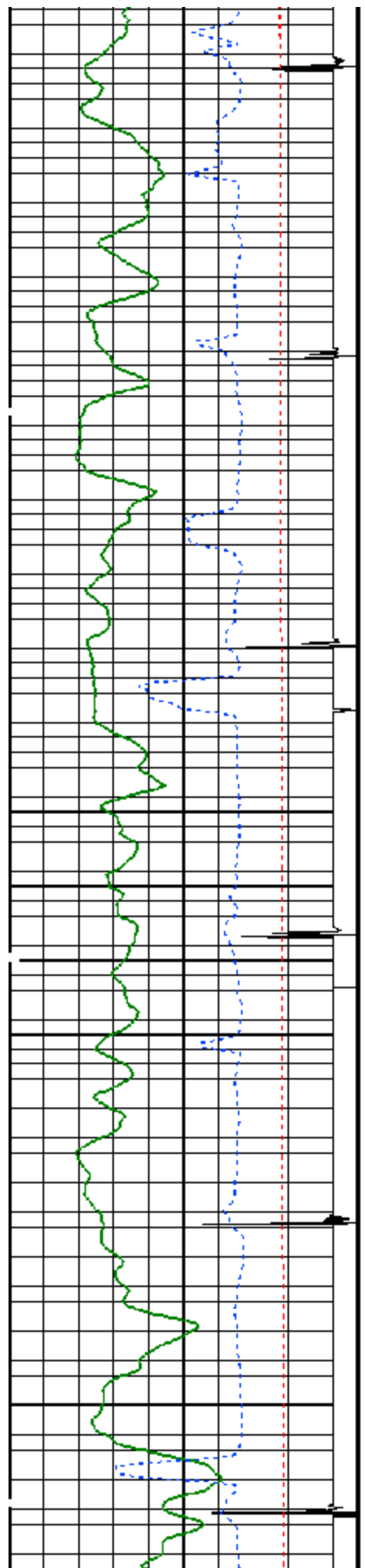




300

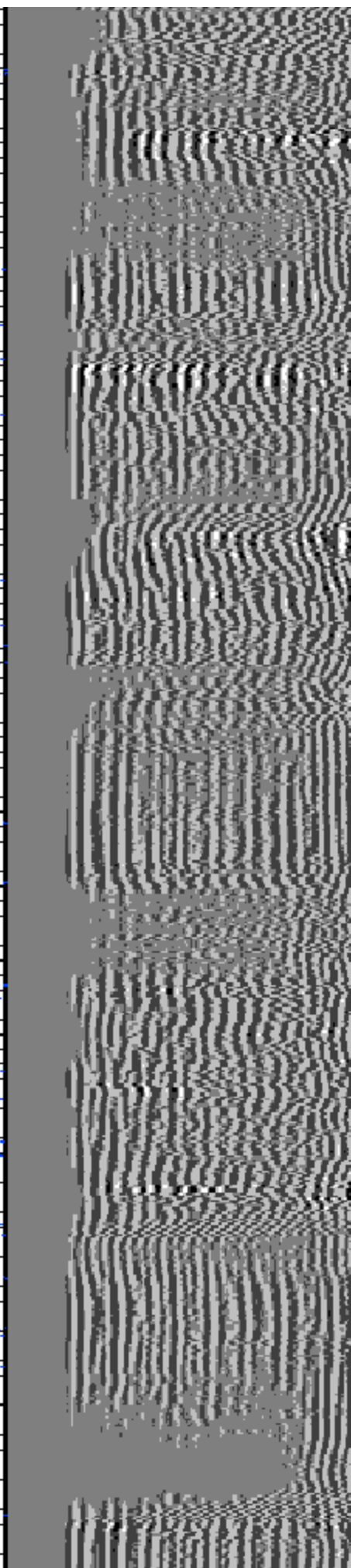
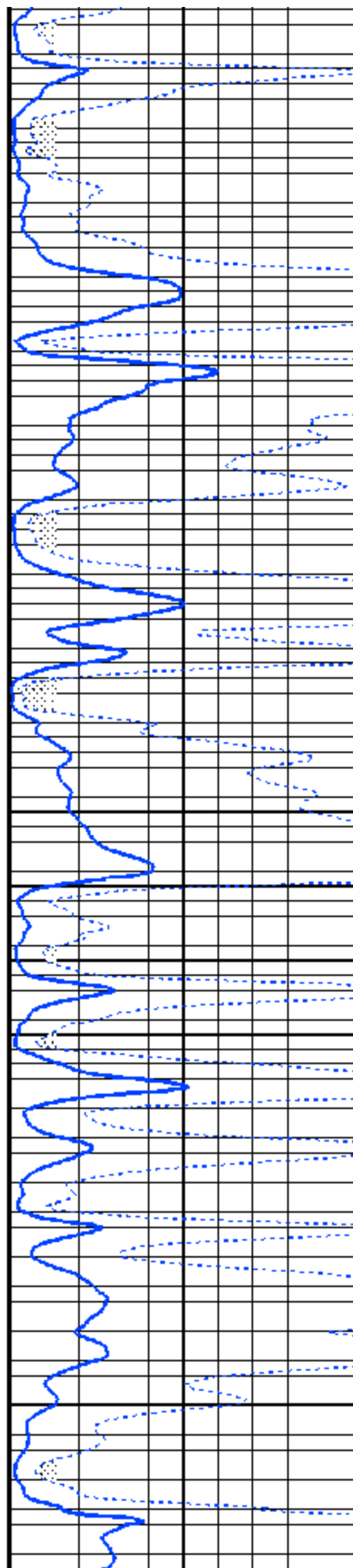
400

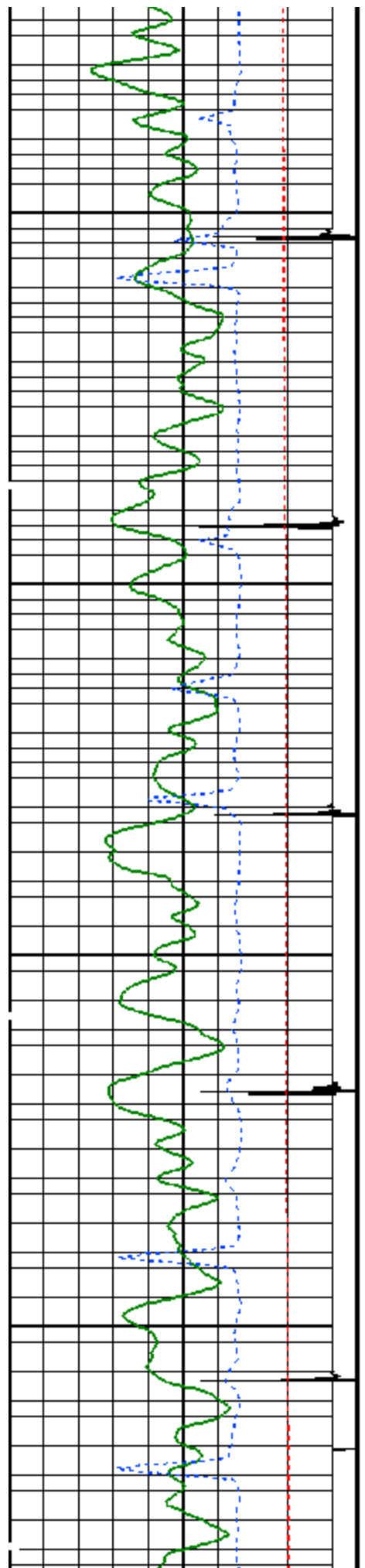




500

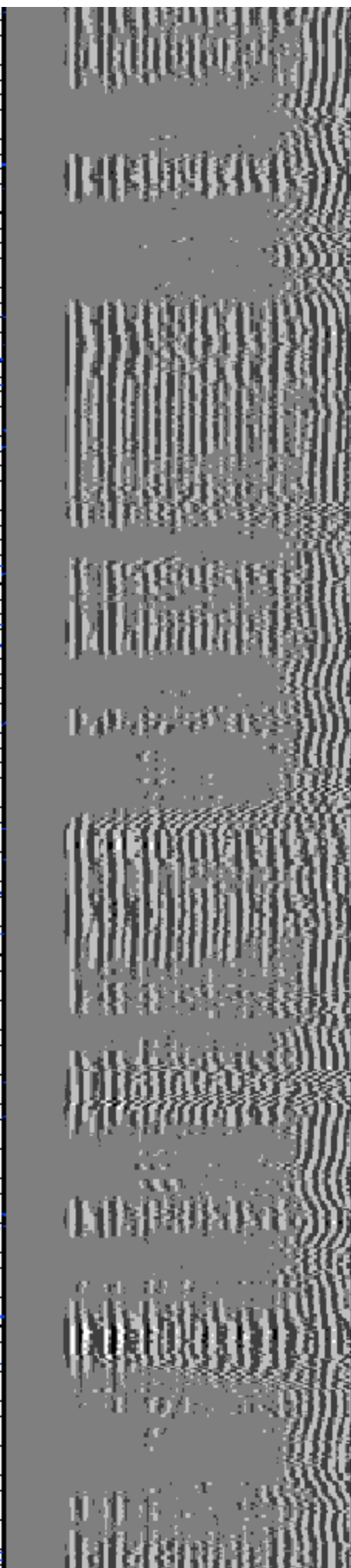
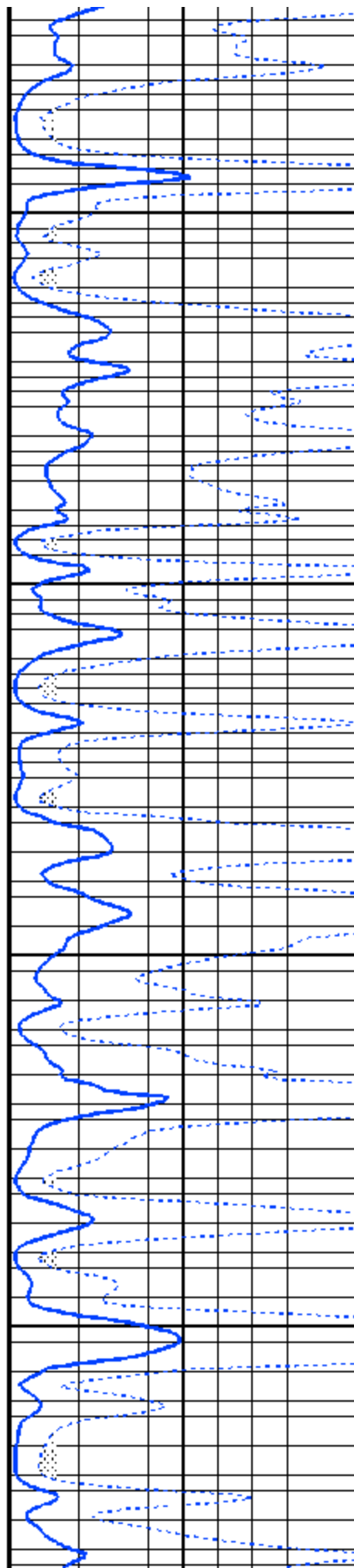
600



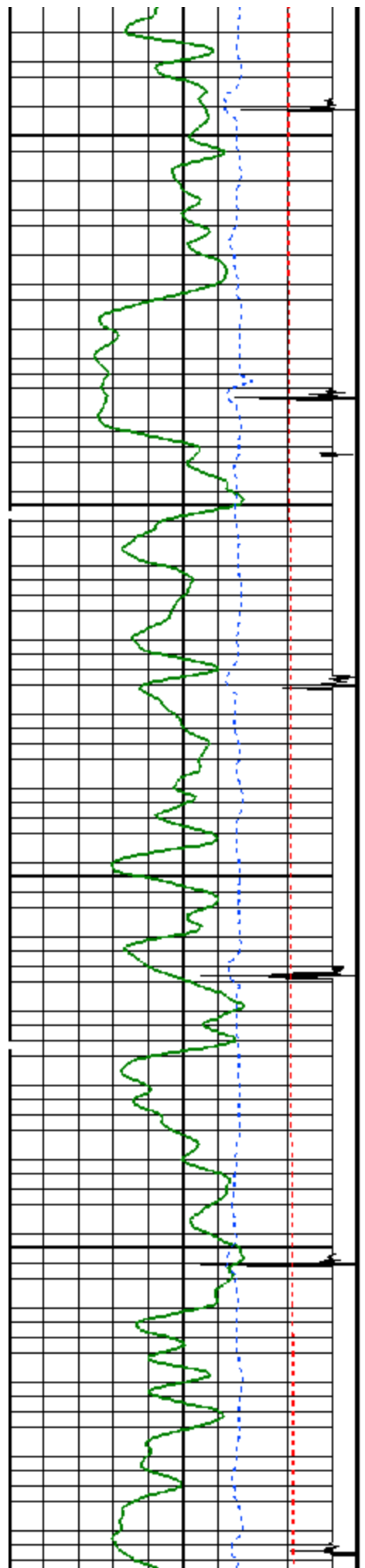


700

800

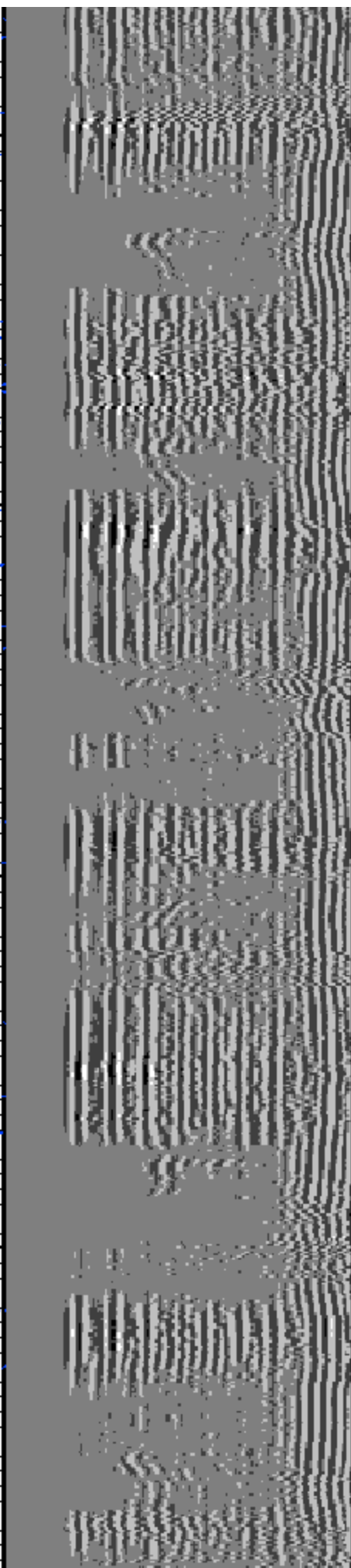
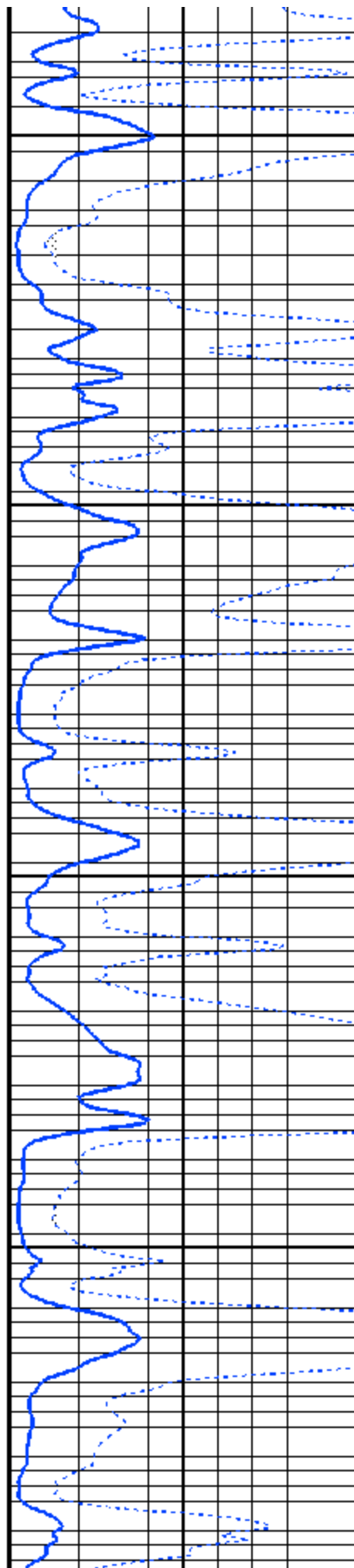


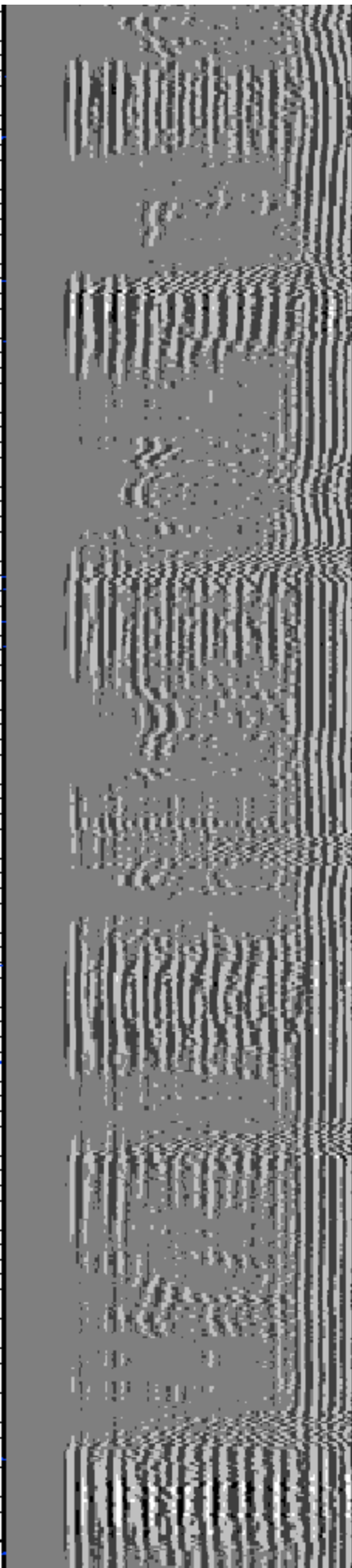
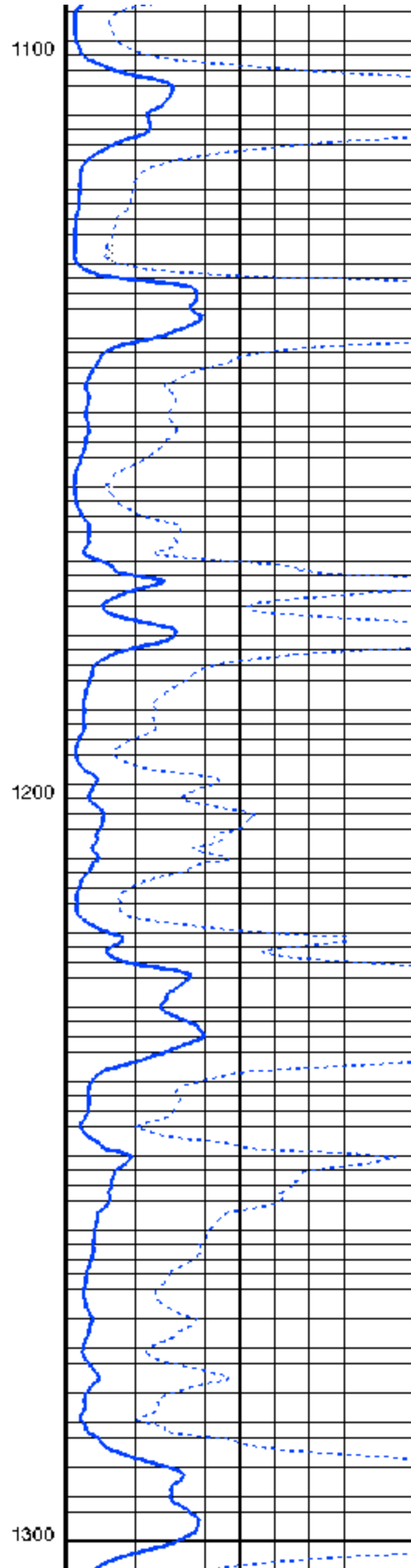
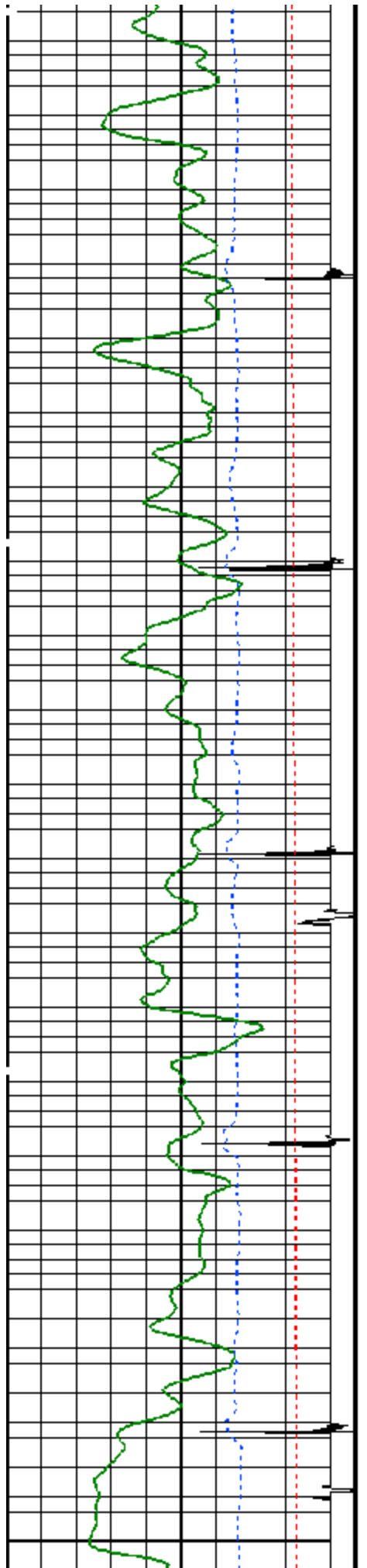


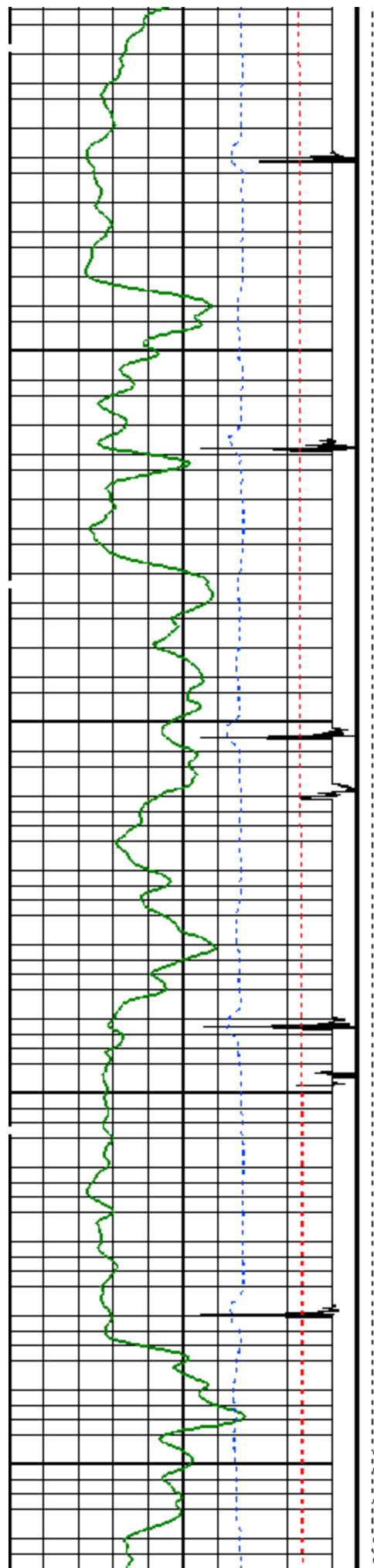


900

1000

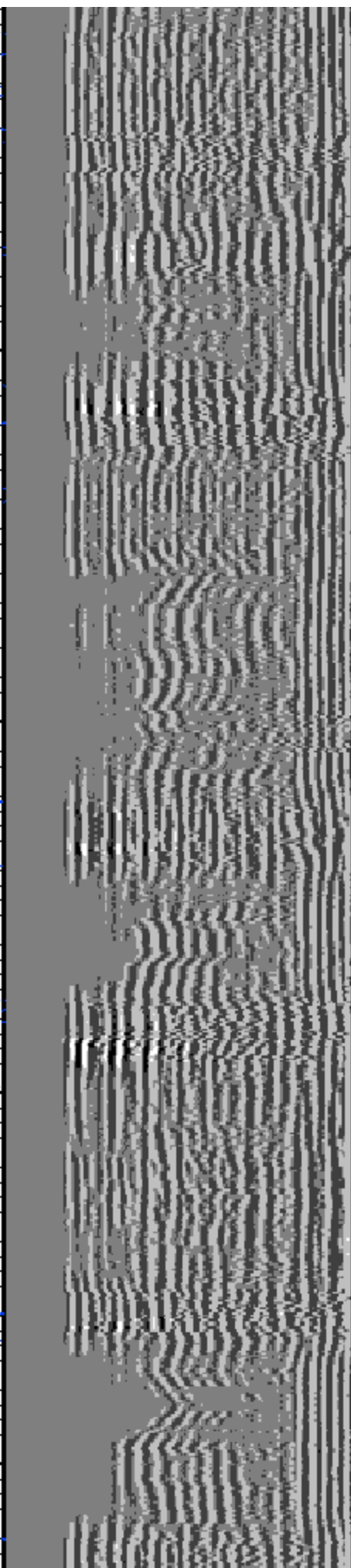
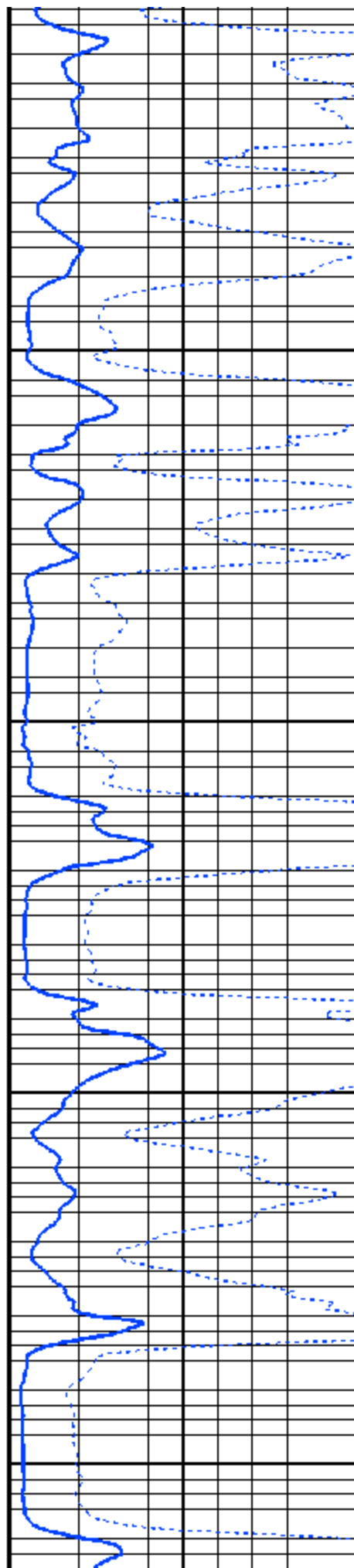


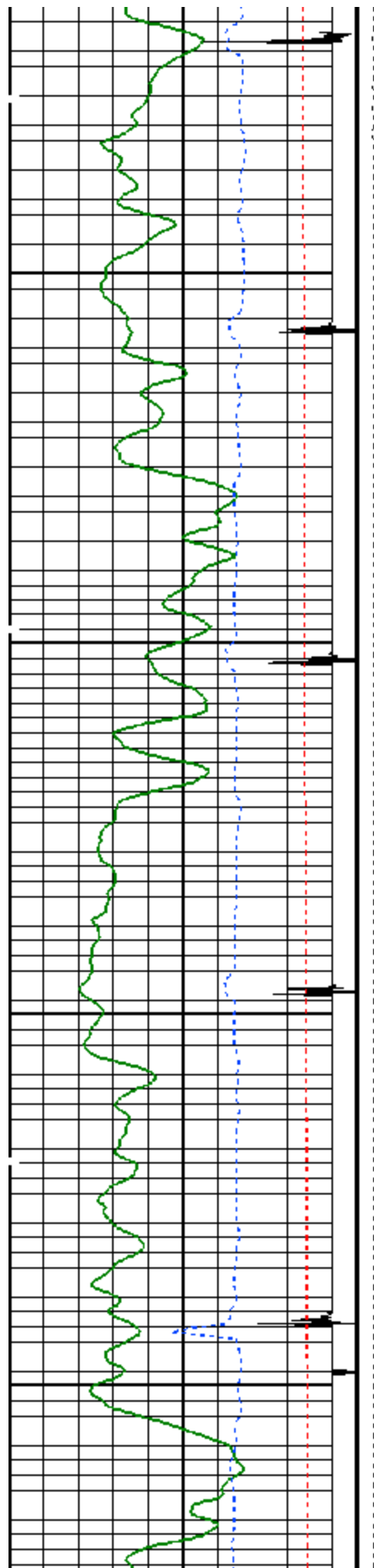




1400

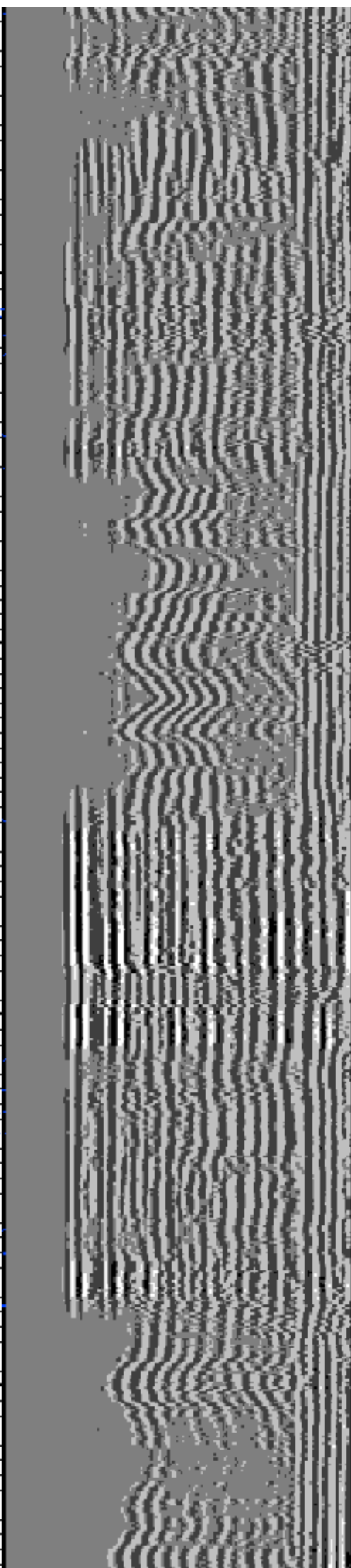
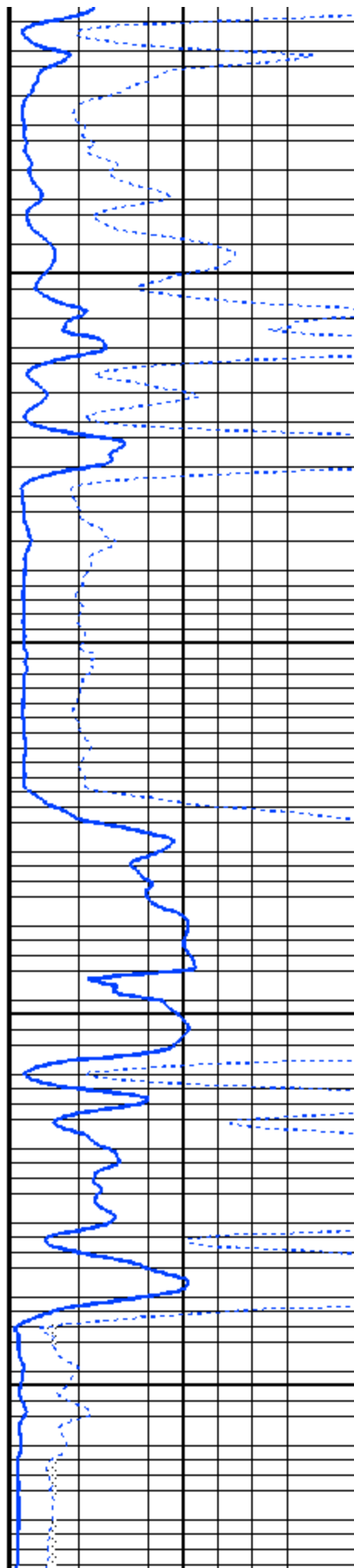
1500

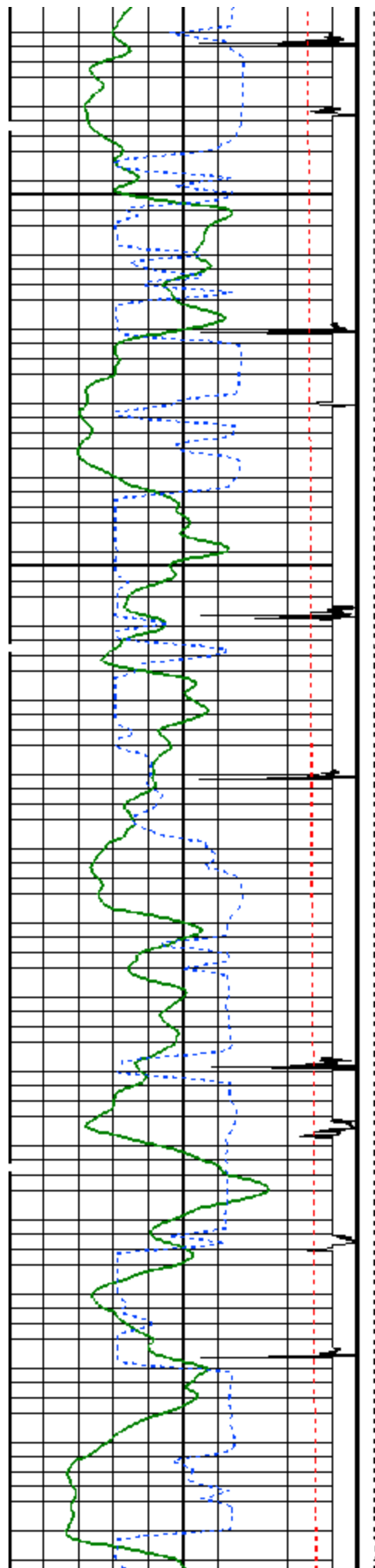




1600

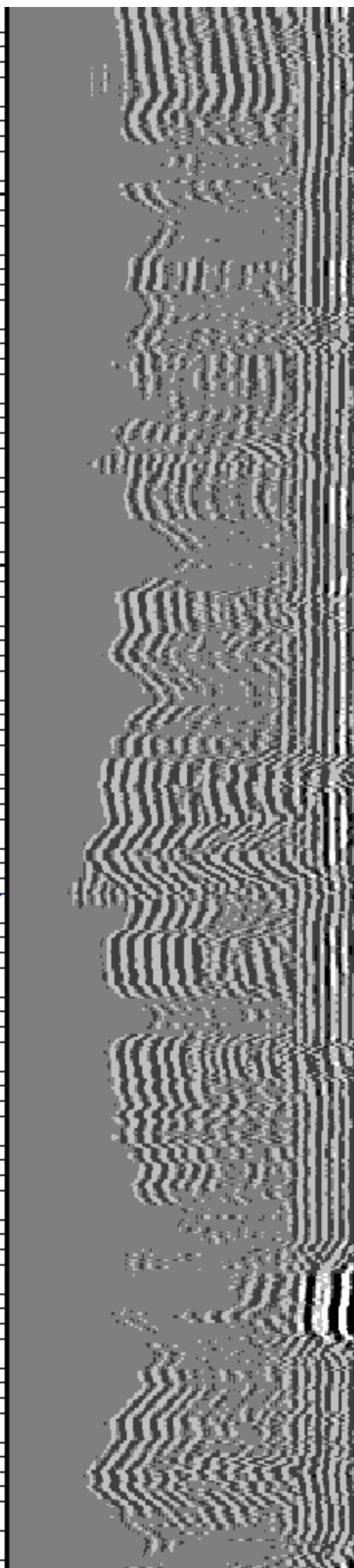
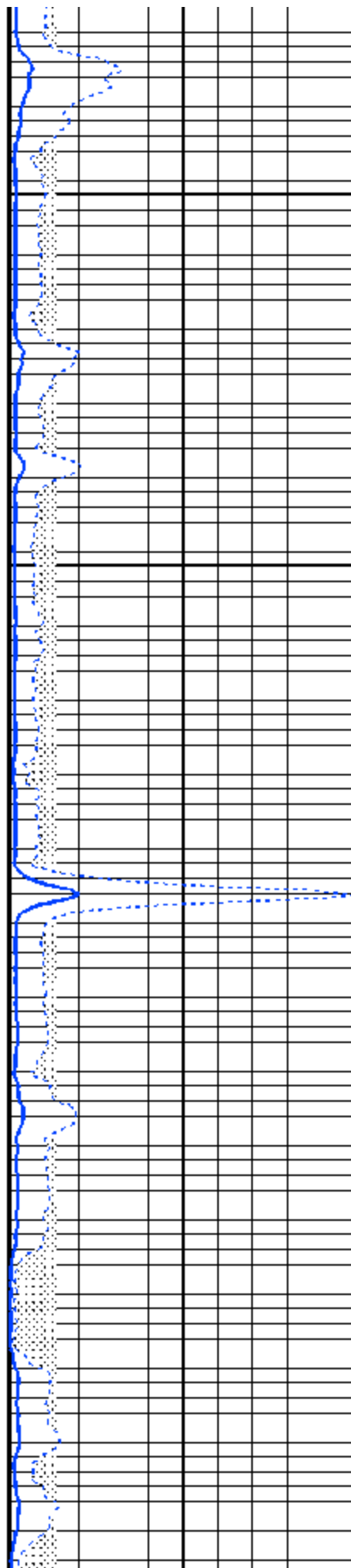
1700

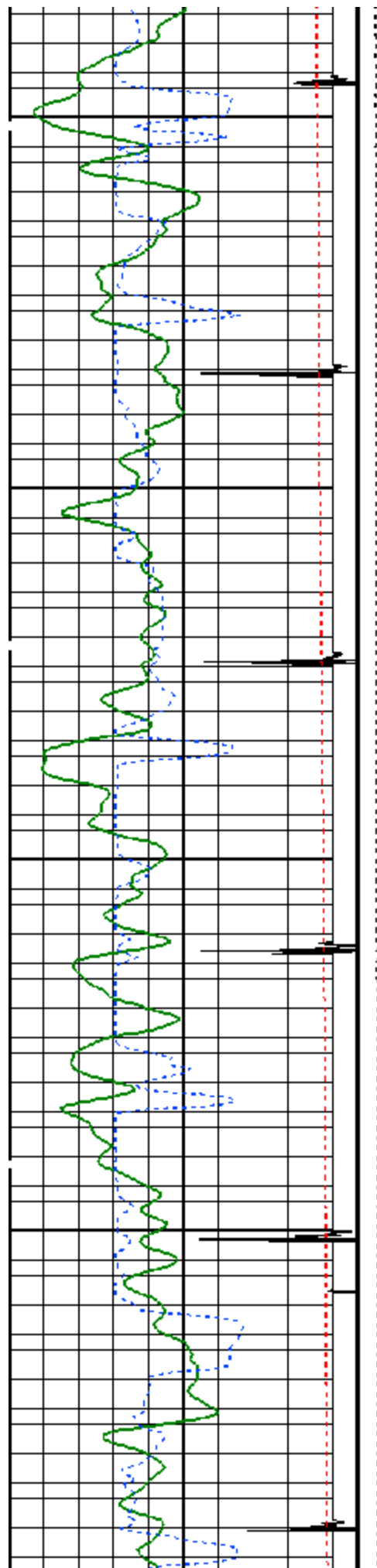




1800

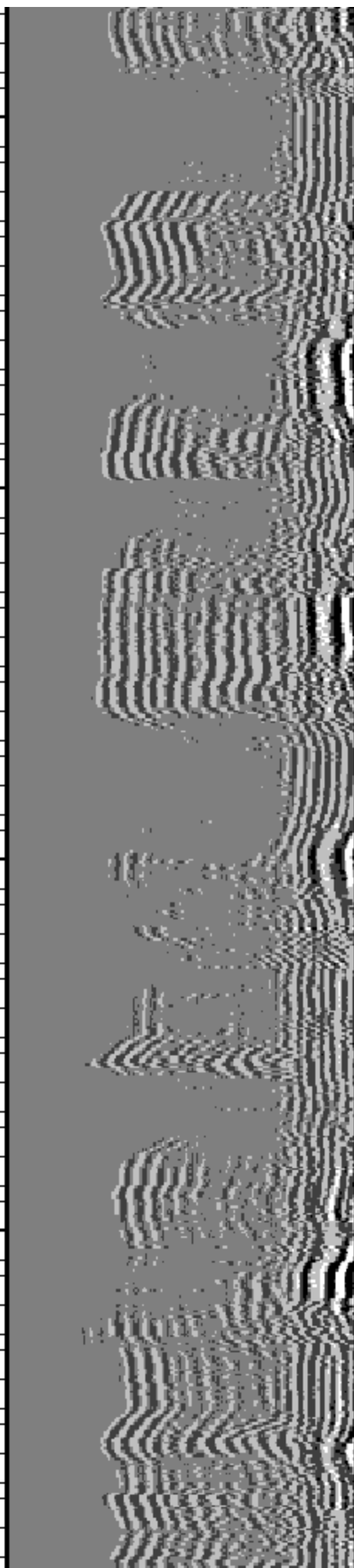
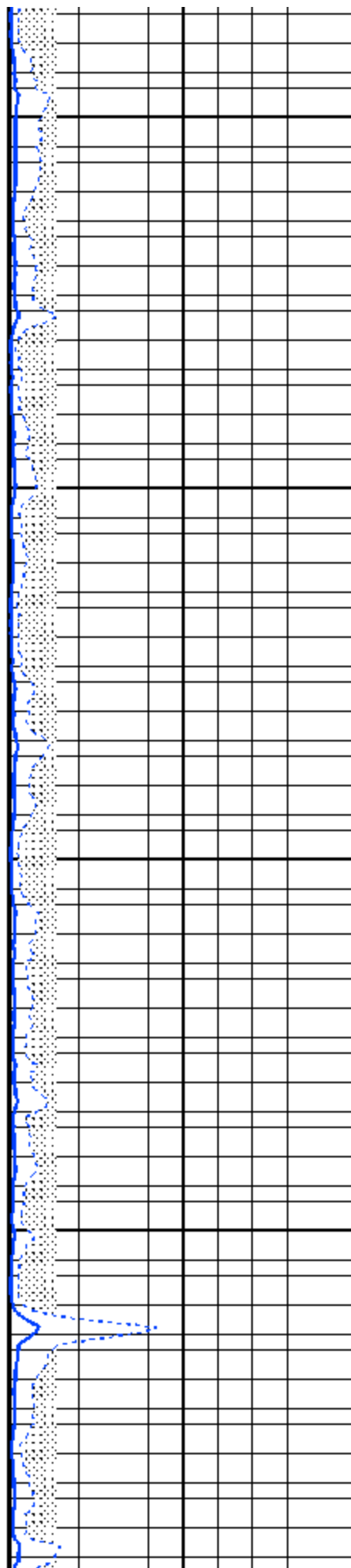
1900

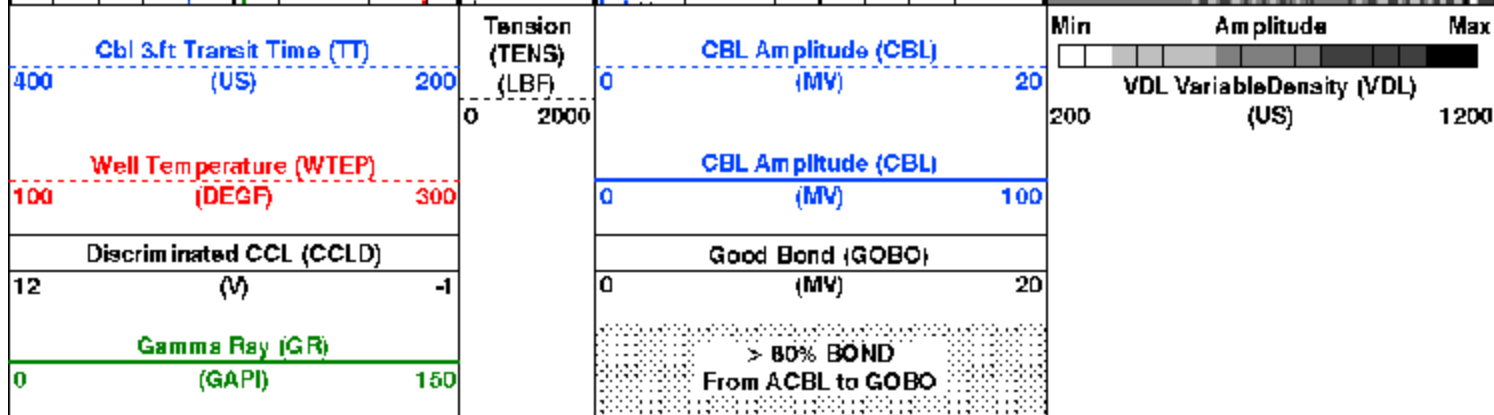
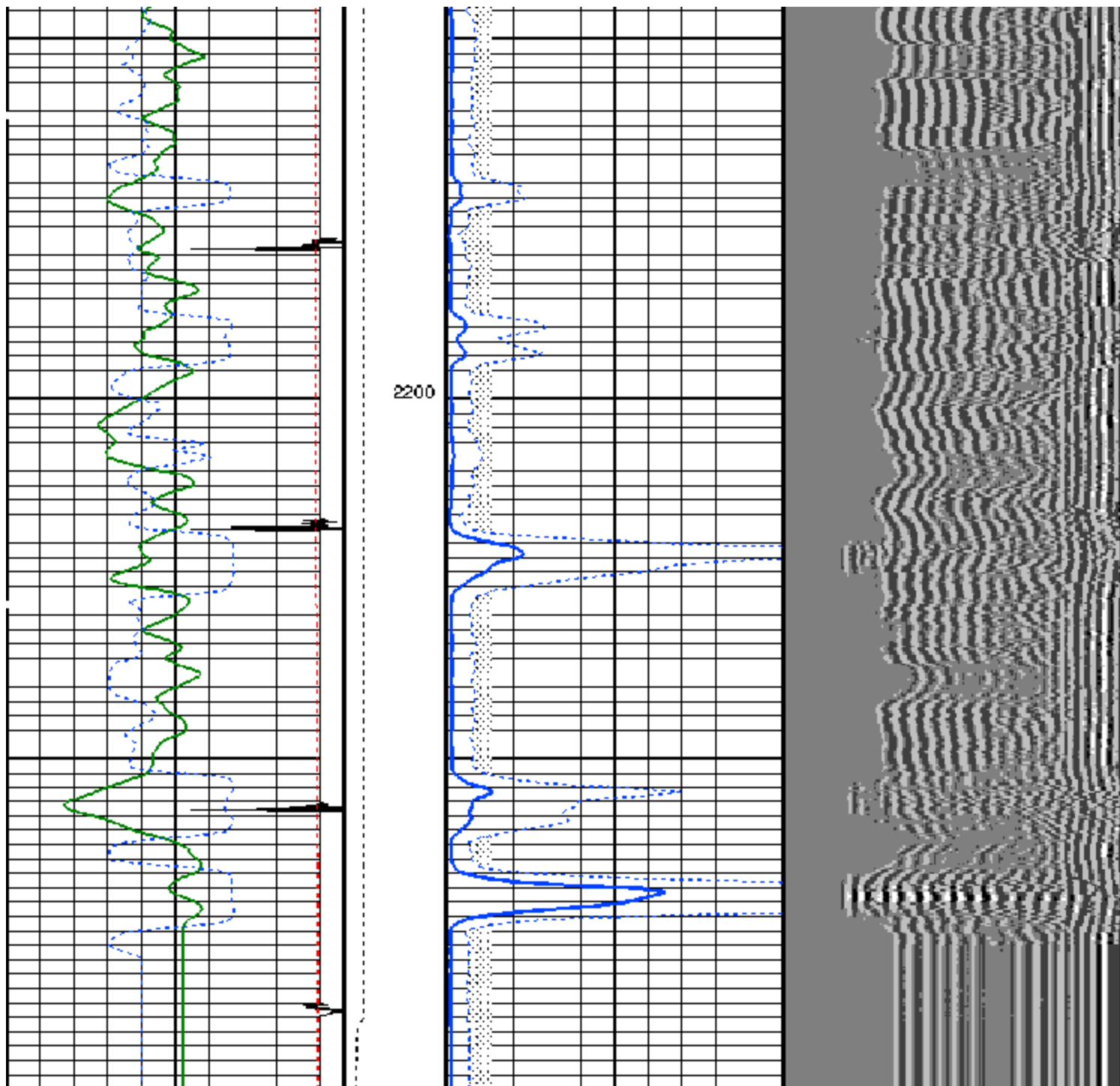




2000

2100





# PIP SUMMARY

Time Mark Every 60 S

Format: Scmt\_Amp\_VDL Vertical Scale: 5" per 100'

Graphics File Created: 09-Sep-2008 19:20

SCMT-CA

14C0-302

PSPT-A/B

14C0-302

## Parameters

DLIS Name	Description	Value
SCMT-CA: Slim Cement Mapping Tool, 1-11/16 OD		
BILI	Bond Index Level for Zone Isolation	0.8
CB3D	SCMT CBL 3 ft Peak Detection Mode	PEAK
CB3G	SCMT CBL 3 ft Peak Detection T0_Delay and Noise Gate	238.059 US
CB3T	SCMT CBL 3 ft Fixed Threshold Level	20 MV
CB5D	SCMT CBL 5 ft Peak Detection Mode	PEAK
CB5G	SCMT CBL 5 ft Peak Detection T0_Delay and Noise Gate	352.059 US
CB5T	SCMT CBL 5 ft Fixed Threshold Level	20 MV
CBLG	CBL Gate Width	40 US
CBRA	CBL LQC Reference Amplitude in Free Pipe	71 MV
CMCF	CBL Cement Type Compensation Factor	1
CMTG	SCMT Slow Channel Multiplexer Mode	SCAN
CMTM	SCMT Operating Mode	LOG
CSCS	SCMT Slow Channel Index	VCC
CTHI	Casing Thickness	0.306128 IN
DTF	Delta-T Fluid	189 US/F
FATT	Acoustic Attenuation due to Fluid	0 DB/F
FCF	CBL Fluid Compensation Factor	0.930928
GOBO	Good Bond	2.63842 MV
MAPD	SCMT MAP Peak Detection Mode	PEAK
MAPG	SCMT MAP Peak Detection T0_Delay and Noise Gate	181.059 US
MAPT	SCMT MAP Fixed Threshold Level	30 MV
MATT	Maximum Attenuation	13.848 DB/F
MCCF	MAP Cement Type Compensation Factor	1
MCI	Minimum Cemented Interval for Isolation	10 FT
MMSA	MAP Minimum Sonic Amplitude	7.35072 MV
MSA	Minimum Sonic Amplitude	1.15842 MV
PEDE	Peak Detection On/Off Switch in Playback	OFF
VDLG	VDL Manual Gain	5
ZCMT	Acoustic Impedance of Cement	6.8 MPAY
System and Miscellaneous		
DO	Depth Offset for Playback	0.0 FT
PP	Playback Processing	NORMAL
TD	Total Depth	2366 FT

## Input DLIS Files

DEFAULT MERGE\_PSP\_SCMT\_011GUP FN:1 PRODUCER 09-Sep-2008 19:19 2296.0 FT 87.0 FT

## Output DLIS Files

DEFAULT SCMT\_PSP\_012PUP FN:8 PRODUCER 09-Sep-2008 19:20

**Schlumberger**

**REPEAT PASS**

MAXIS Field Log

Company: GENESIS GAS & OIL, LLC

Well: FLETCHER GULCH 4-13

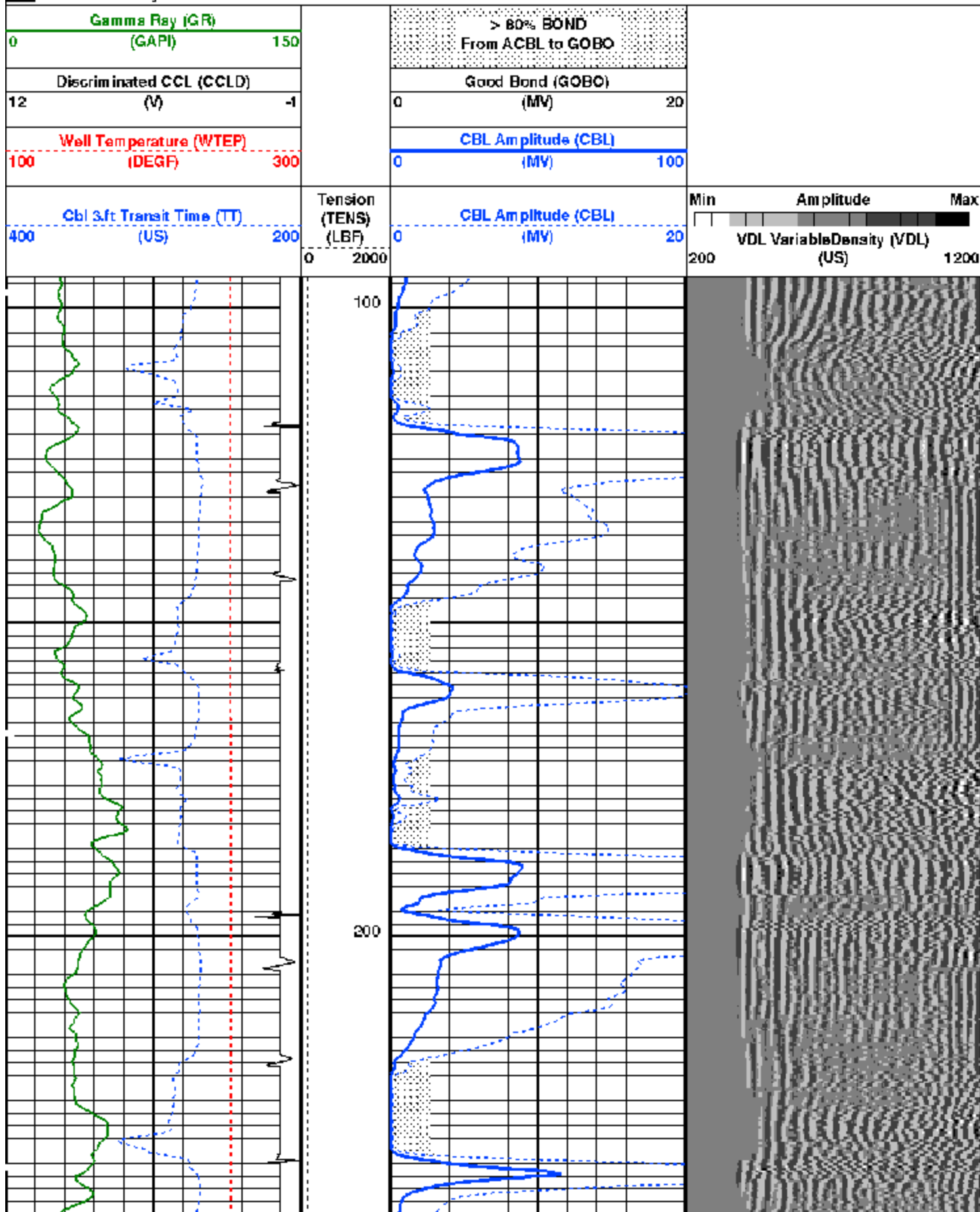
## Output DLIS Files

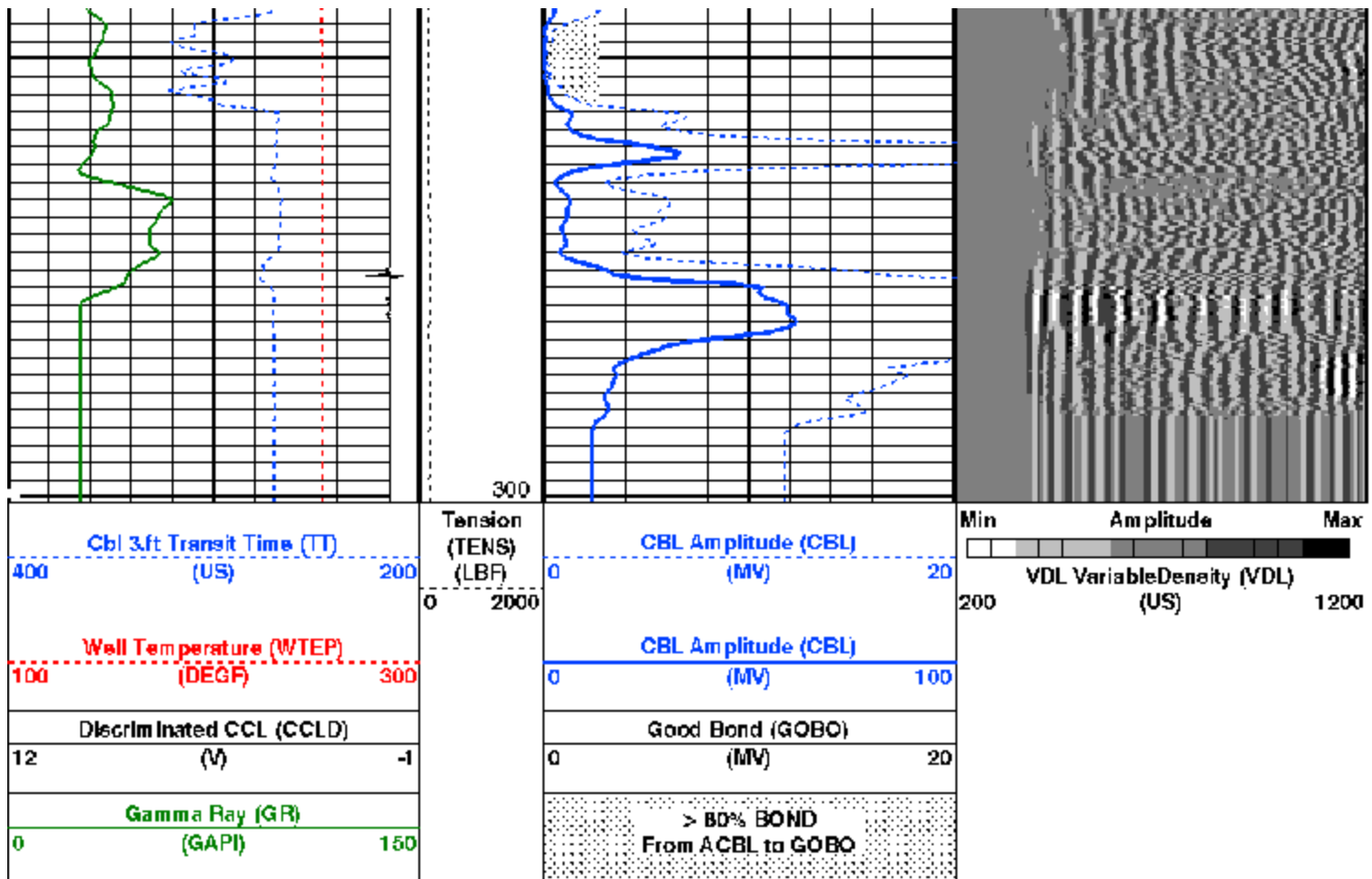
DEFAULT SCMT\_PSP\_007LUP FN:6 PRODUCER 09-Sep-2008 10:45



## PIP SUMMARY

Time Mark Every 60 S





#### PIP SUMMARY

Time Mark Every 60 S

Format: Scmt\_Amp\_VDL Vertical Scale: 5" per 100'

Graphics File Created: 09-Sep-2008 10:45

### OP System Version: 15C0-309

MCM

SCMT-CA

SRPC-3582-Q1\_2008\_OP15

PSPT-A/B

SRPC-3582-Q1\_2008\_OP15

### Parameters

DLIS Name	Description	Value
SCMT-CA: Slim Cement Mapping Tool, 1-11/16 OD		
BILI	Bond Index Level for Zone Isolation	0.8
BISS	Bond Index Source Selection for BIQL	BI
CB3D	SCMT CBL 3 ft Peak Detection Mode	PEAK
CB3G	SCMT CBL 3 ft Peak Detection T0_Delay and Noise Gate	238.059 US
CB3T	SCMT CBL 3 ft Fixed Threshold Level	20 MV
CB5D	SCMT CBL 5 ft Peak Detection Mode	PEAK
CB5G	SCMT CBL 5 ft Peak Detection T0_Delay and Noise Gate	352.059 US
CB5T	SCMT CBL 5 ft Fixed Threshold Level	20 MV
CBLG	CBL Gate Width	40 US
CBRA	CBL LGC Reference Amplitude In Free Pipe	71 MV
CMCF	CBL Cement Type Compensation Factor	1
CMTC	SCMT Slow Channel Multiplexer Mode	SCAN
CMTM	SCMT Operating Mode	LOG
CMTP	SCMT Tool position on CAN	3
CSCS	SCMT Slow Channel Index	VCC
GTHI	Casing Thickness	0.306128 IN
DTF	Delta-T Fluid	189 US/F
FATT	Acoustic Attenuation due to Fluid	0 DB/F
FCF	CBL Fluid Compensation Factor	0.930926
GOBO	Good Bond	2.63842 MV
MAPD	SCMT MAP Peak Detection Mode	PEAK
MAPG	SCMT MAP Peak Detection T0_Delay and Noise Gate	181.059 US
MAPT	SCMT MAP Fixed Threshold Level	30 MV
MATT	Maximum Attenuation	13.848 DB/F
MCCF	MAP Cement Type Compensation Factor	1

MCI	Minimum Cemented Interval for Isolation	4.75	FT
MMSA	MAP Minimum Sonic Amplitude	7.35072	MV
MSA	Minimum Sonic Amplitude	1.15842	MV
PEDE	Peak Detection On/Off Switch in Playback	OFF	
RBC	Relative Bearing Correction Allow/Disallow	ALLOW	
VDLG	VDL Manual Gain	5	
ZCMT	Acoustic Impedance of Cement	6.8	MRAY
PSPT-A/B: Production Services Logging Platform			
BHS	Borehole Status	CASED	
BHT	Bottom Hole Temperature (used in calculations)	83	DEGF
CSID	Casing Size I.D.	4.892	IN
GCSE	Generalized Caliper Selection	BS	
GDEV	Average Angular Deviation of Borehole from Normal	0	DEG
GGRD	Geothermal Gradient	0.01	DE/F
GRSE	Generalized Mud Resistivity Selection	CHART GEN 9	
GTSE	Generalized Temperature Selection	LINEAR_ESTIMATE	
ISSBAR	Barite Mud Switch	NOBARITE	
MATR	Rock Matrix for Neutron Porosity Corrections	SANDSTONE	
PBPO	PBMS Tool position on CAN	2	
PCCG	PBMS CCL Gain	DB24	
PSTP	PSTC Tool Position on CAN Bus	1	
SHT	Surface Hole Temperature	57	DEGF
System and Miscellaneous			
ALTDCHAN	Name of alternate depth channel	SpeedCorrectedDepth	
BS	Bit Size	7.875	IN
BSAL	Borehole Salinity	-50000.00	PPM
CSIZ	Current Casing Size	5.500	IN
CWEI	Casing Weight	17.00	LB/F
DFD	Drilling Fluid Density	8.34	LB/G
FLEV	Fluid Level	0.00	FT
MST	Mud Sample Temperature	-50000.00	DEGF
PBVSADP	Use alternate depth channel for playback	NO	
RMFS	Resistivity of Mud Filtrate Sample	-50000.0000	OHMM
RW	Resistivity of Connate Water	1.0000	OHMM
TD	Total Depth	2366	FT
TDD	Total Depth - Driller	2366.00	FT
TDL	Total Depth - Logger	2286.00	FT
TWS	Temperature of Connate Water Sample	100.00	DEGF

### Output DLIS Files

DEFAULT SCMT\_PSP\_007LUP FN:6 PRODUCER 09-Sep-2008 10:45

Company: **GENESIS GAS & OIL, LLC**

**Schlumberger**

Well: **FLETCHER GULCH 4-13**

Field: **WILDCAT**

County: **RIO BLANCO**

State: **COLORADO**

**CEMENT BOND LOG**

**GAMMA RAY**

**COLLARS/TEMPERATURE/PRESSURE**