

Company: GENESIS GAS & OIL, LLC.

Well: FLETCHER GULCH 4-33

Field: FLETCHER GULCH PROSPECT

County: RIO BLANCO State: CO

County: RIO BLANCO

Field: FLETCHER GULCH PROSPECT

Location: 678' FSL & 796' FEL

Well: FLETCHER GULCH 4-33

Company: GENESIS GAS & OIL, LLC.

CBL/VDL CEMENT BOND LOG

GAMMA RAY

CASING COLLAR LOCATOR

678' FSL & 796' FEL

Elev.: K.B. 6625.6 ft
G.L. 6618.6 ft
D.F. 6624.6 ft

Permanent Datum: GROUND LEVEL
Log Measured From: KELLY BUSHING
Drilling Measured From: KELLY BUSHING

Elev.: 6618.6 ft
7.0 ft above Perm. Datum

API Serial No. 05-103-10887

Section 4

Township 1N

Range 100W

Logging Date		23-Jul-2008	
Run Number	1		
Depth Driller	0 ft		
Schlumberger Depth	0 ft		
Bottom Log Interval	573 ft		
Top Log Interval	200 ft		
Casing Fluid Type	WATER BASED		
Salinity			
Density	8.9 lbm/gal		
Fluid Level	0 ft		
BIT/CASING/TUBING STRING			
Bit Size	11,000 in		
From	0 ft		
To	619 ft		
Casing/Tubing Size	8.625 in		
Weight	24 lbm/ft		
Grade			
From	0 ft		
To	584 ft		
Maximum Recorded Temperatures	87 degF		
Logger On Bottom	23-Jul-2008	14:15	
Unit Number	Location		
Recorded By	2210	VERNAL	
Witnessed By	ANGEL ROCHA & ANDREA CAINES		
	ED PILCHER		

PVT DATA				Run 1	Run 2	Run 3
Oil Density						
Water Salinity						
Gas Gravity						
Bo						
Bw						
1/Bg						
Bubble Point Pressure						
Bubble Point Temperature						
Solution GOR						
Maximum Deviation	3.48 deg					
CEMENTING DATA						
Primary/Squeeze	Primary					
Casing String No						
Lead Cement Type						
Volume						
Density						
Water Loss						
Additives						
Tail Cement Type						
Volume						
Density						
Water Loss						
Additives						
Expected Cement Top						
Logging Date						
Run Number						
Depth Driller						
Schlumberger Depth						
Bottom Log Interval						
Top Log Interval						
Casing Fluid Type						
Salinity						
Density						
Fluid Level						
BIT/CASING/TUBING STRING						
Bit Size						
From						
To						
Casing/Tubing Size						
Weight						
Grade						
From						
To						
Maximum Recorded Temperatures						
Logger On Bottom						
Unit Number	Location					
Recorded By						
Witnessed By						

DEPTH SUMMARY LISTING

Date Created: 23-JUL-2008 14:52:24

Depth System Equipment

Depth Measuring Device		Tension Device		Logging Cable	
Type:	IDW-B	Type:	CMTD-B/A	Type:	7-46P
Serial Number:	5907	Serial Number:	2537	Serial Number:	707038
Calibration Date:	13-MAR-2008	Calibration Date:	25-JUN-2008	Length:	24022.00 FT
Calibrator Serial Number:	1	Calibrator Serial Number:	100518	Conveyance Method: Wireline Rig Type: LAND	
Calibration Cable Type:	7-46P	Calibration Gain:	0.81		
Wheel Correction 1:	-10	Calibration Offset:	326.00		
Wheel Correction 2:	-10				

Depth Control Parameters

Log Sequence:	First Log In the Well
Rig Up Length At Surface:	80.80 FT
Rig Up Length At Bottom:	80.00 FT
Rig Up Length Correction:	0.80 FT
Stretch Correction:	0.00 FT
Tool Zero Check At Surface:	0.30 FT

Depth Control Remarks

1. ALL SCHLUMBERGER DEPTH PROCEDURES FOLLOWED
2. IDW USED AS PRIMARY DEPTH CONTROL, Z-CHART USED AS SECONDARY DEPTH CONTRC
3.
4.
5.
6.

DISCLAIMER

THE USE OF AND RELIANCE UPON THIS RECORDED-DATA BY THE HEREIN NAMED COMPANY (AND ANY OF ITS AFFILIATES, PARTNERS, REPRESENTATIVES, AGENTS, CONSULTANTS AND EMPLOYEES) IS SUBJECT TO THE TERMS AND CONDITIONS AGREED UPON BETWEEN SCHLUMBERGER AND THE COMPANY, INCLUDING: (a) RESTRICTIONS ON USE OF THE RECORDED-DATA; (b) DISCLAIMERS AND WAIVERS OF WARRANTIES AND REPRESENTATIONS REGARDING COMPANY'S USE OF AND RELIANCE UPON THE RECORDED-DATA; AND (c) CUSTOMER'S FULL AND SOLE RESPONSIBILITY FOR ANY INFERENCE DRAWN OR DECISION MADE IN CONNECTION WITH THE USE OF THIS RECORDED-DATA.

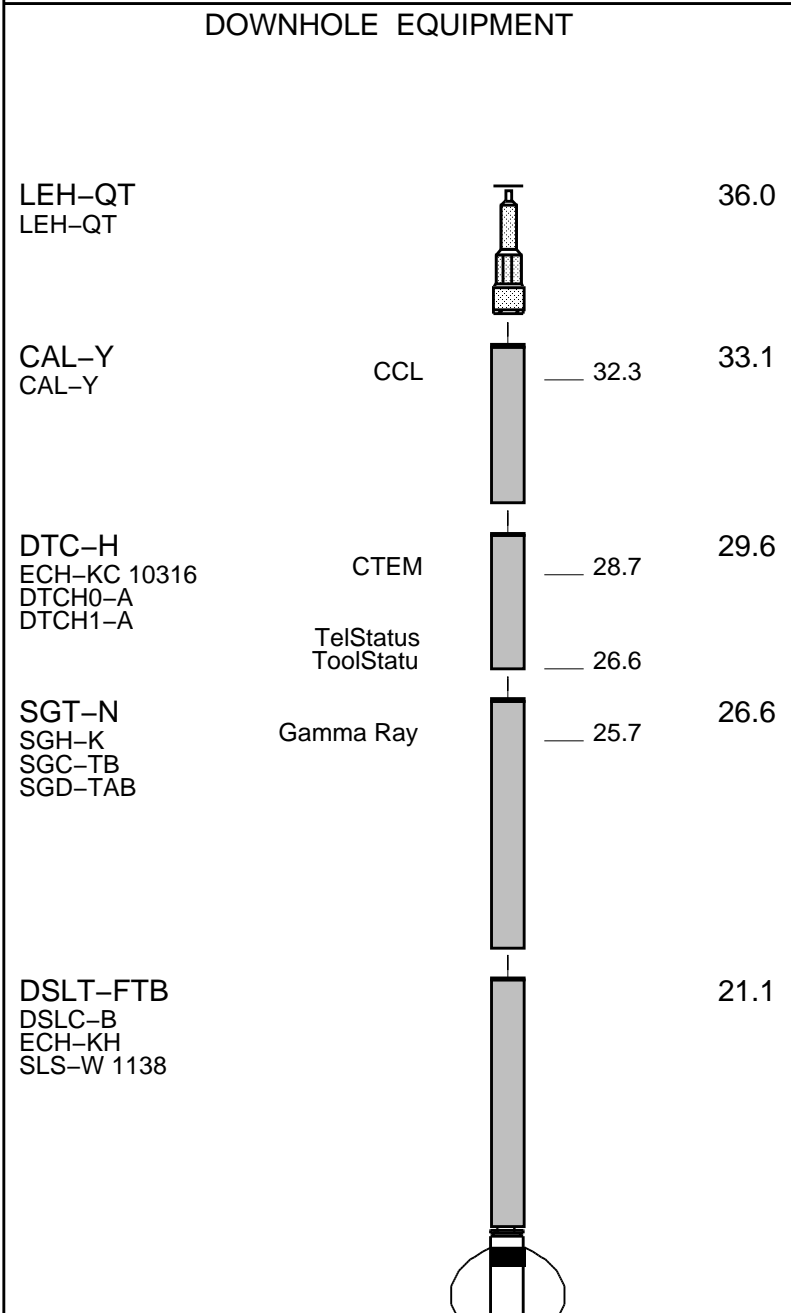
OTHER SERVICES1 OS1: NONE OS2: OS3: OS4: OS5:	OTHER SERVICES2 OS1: OS2: OS3: OS4: OS5:
REMARKS: RUN NUMBER 1	REMARKS: RUN NUMBER 2
First run in hole.	
DSL T ran with CMEZs as per toolsketch	
Expected free pipe reading 55 mV.	
Float collar at 584 ft as per client.	
Top cement found at 456 ft.	
.	

RUN 1			RUN 2		
SERVICE ORDER #:		ATTZ-00002	SERVICE ORDER #:		
PROGRAM VERSION:		15C0-309	PROGRAM VERSION:		
FLUID LEVEL:		0 ft	FLUID LEVEL:		
LOGGED INTERVAL	START	STOP	LOGGED INTERVAL	START	STOP

EQUIPMENT DESCRIPTION					
RUN 1			RUN 2		

SURFACE EQUIPMENT

GSR-U/Y
WITM (DTS)-A



USN
UHN
USF UHF

8.6
7.8
7.6

LSF LHF
LHN
LSN

4.9
4.7
3.9

DSLT Aux.
DF
Tension HV

0.5
0.0

TOOL ZERO

0.5

MAXIMUM STRING DIAMETER 4.50 IN
MEASUREMENTS RELATIVE TO TOOL ZERO
ALL LENGTHS IN FEET

Client: GENESIS GAS & OIL, LLC.

Well: FLETCHER GULCH 4-33

Field: FLETCHER GULCH PROSPECT

State: CO

Country: US

Drawing Date: 7/23/2008

API #: 05-103-10887

Rig Name: ASPEN

Reference Datum: GROUND LEVEL

Elevation: 6618.6 ft

Production String

(in) (ft)
OD ID MD

Well Schematic

(ft) (in)
MD OD ID

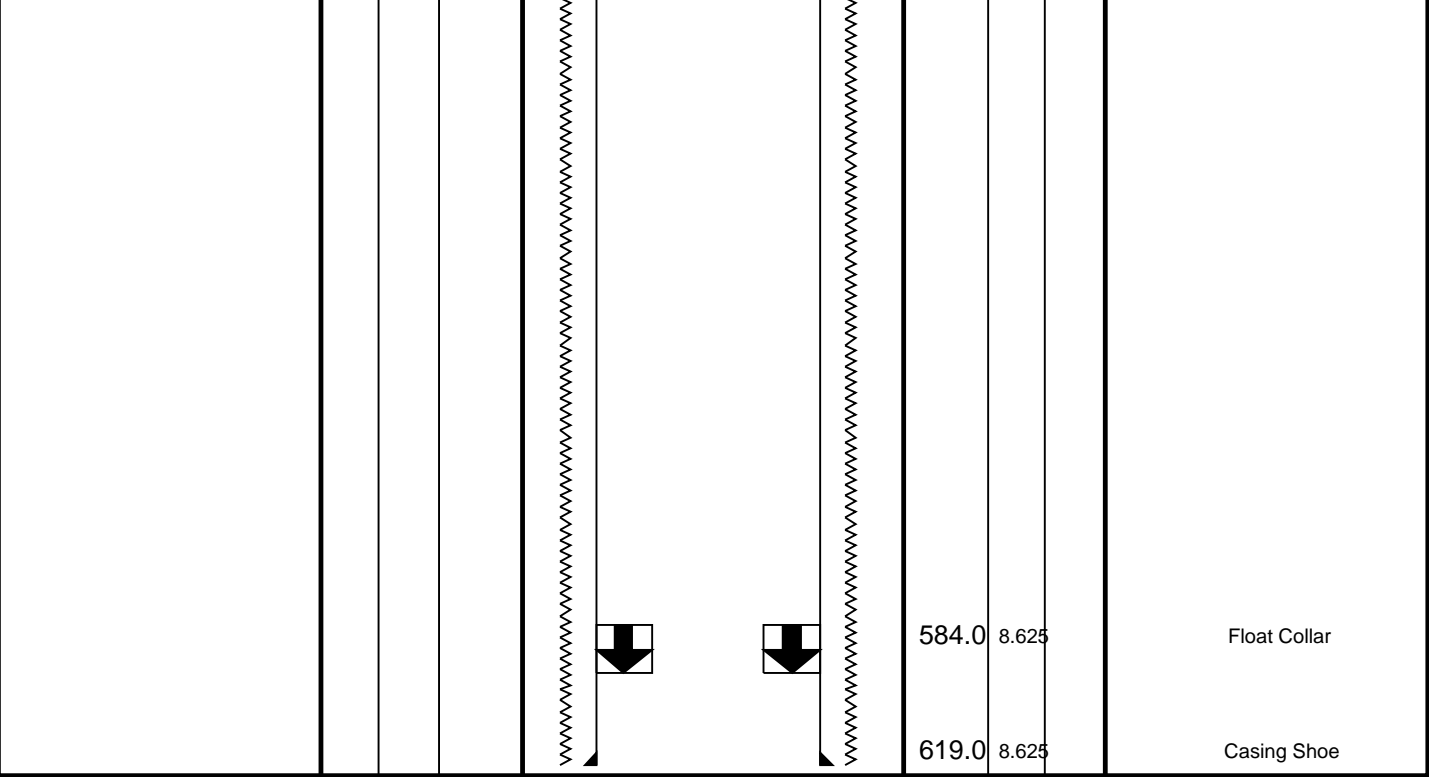
Casing String

0.0 11.000

8.625

Borehole Segment

Casing String



Main Pass

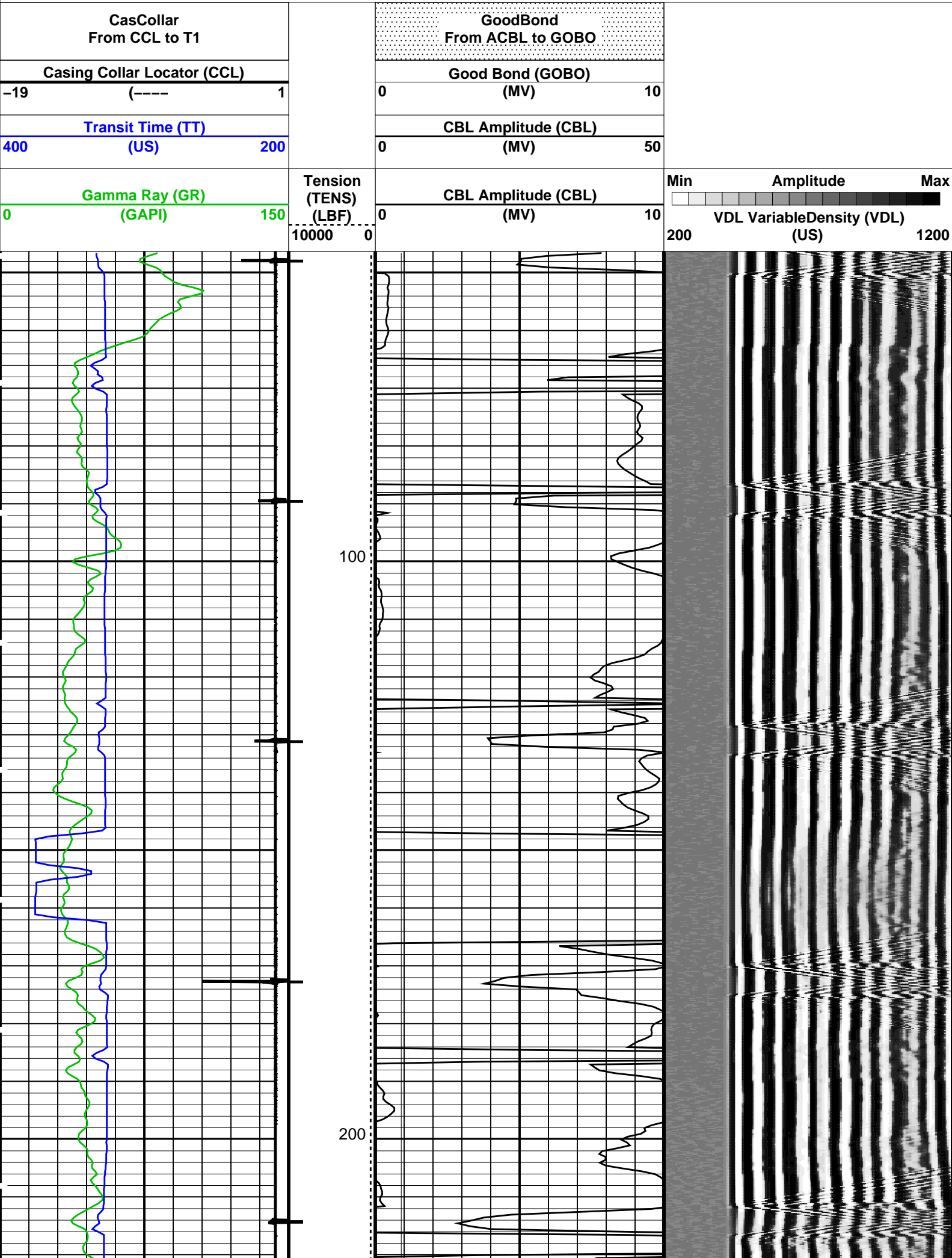
MAXIS Field Log

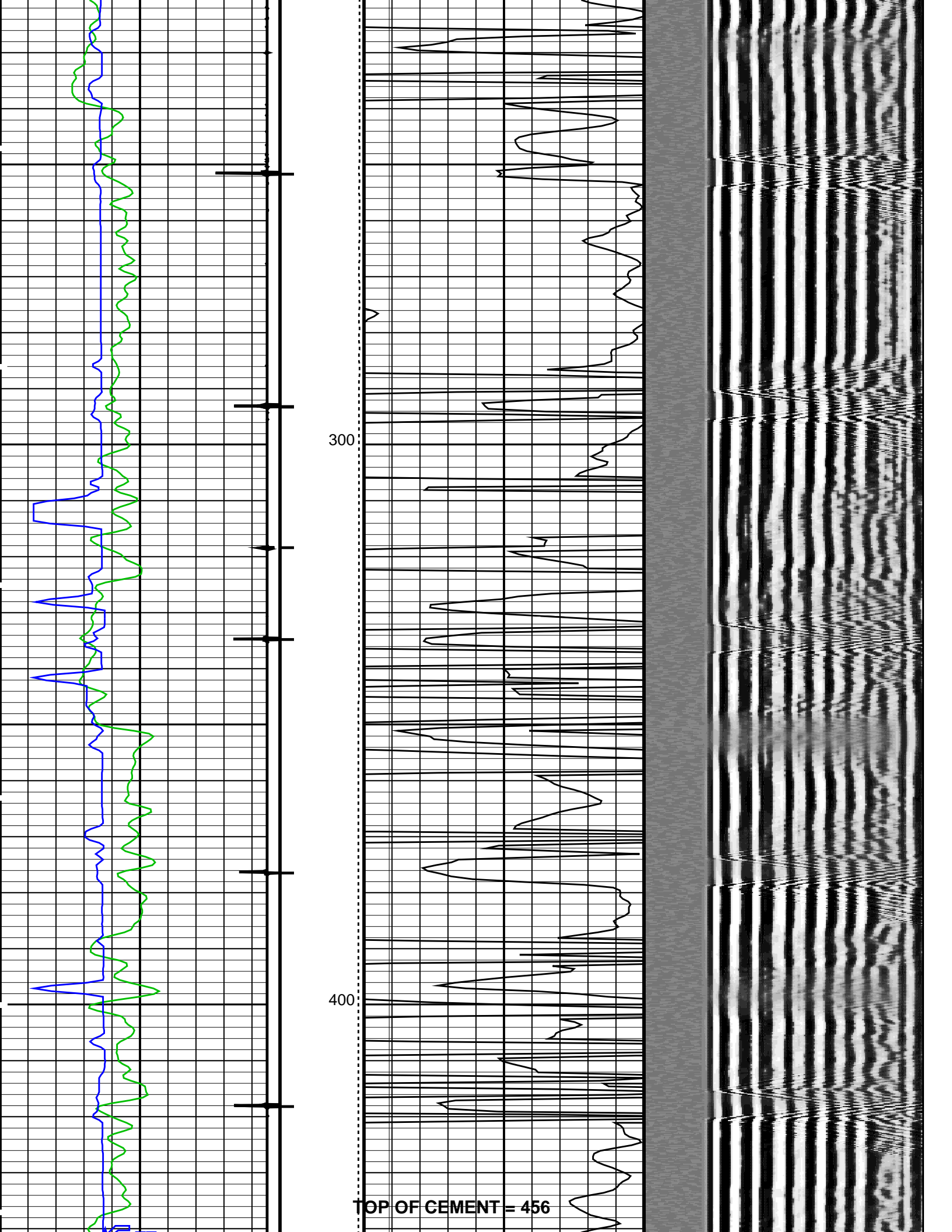
Company: GENESIS GAS & OIL, LLC. Well: FLETCHER GULCH 4-33

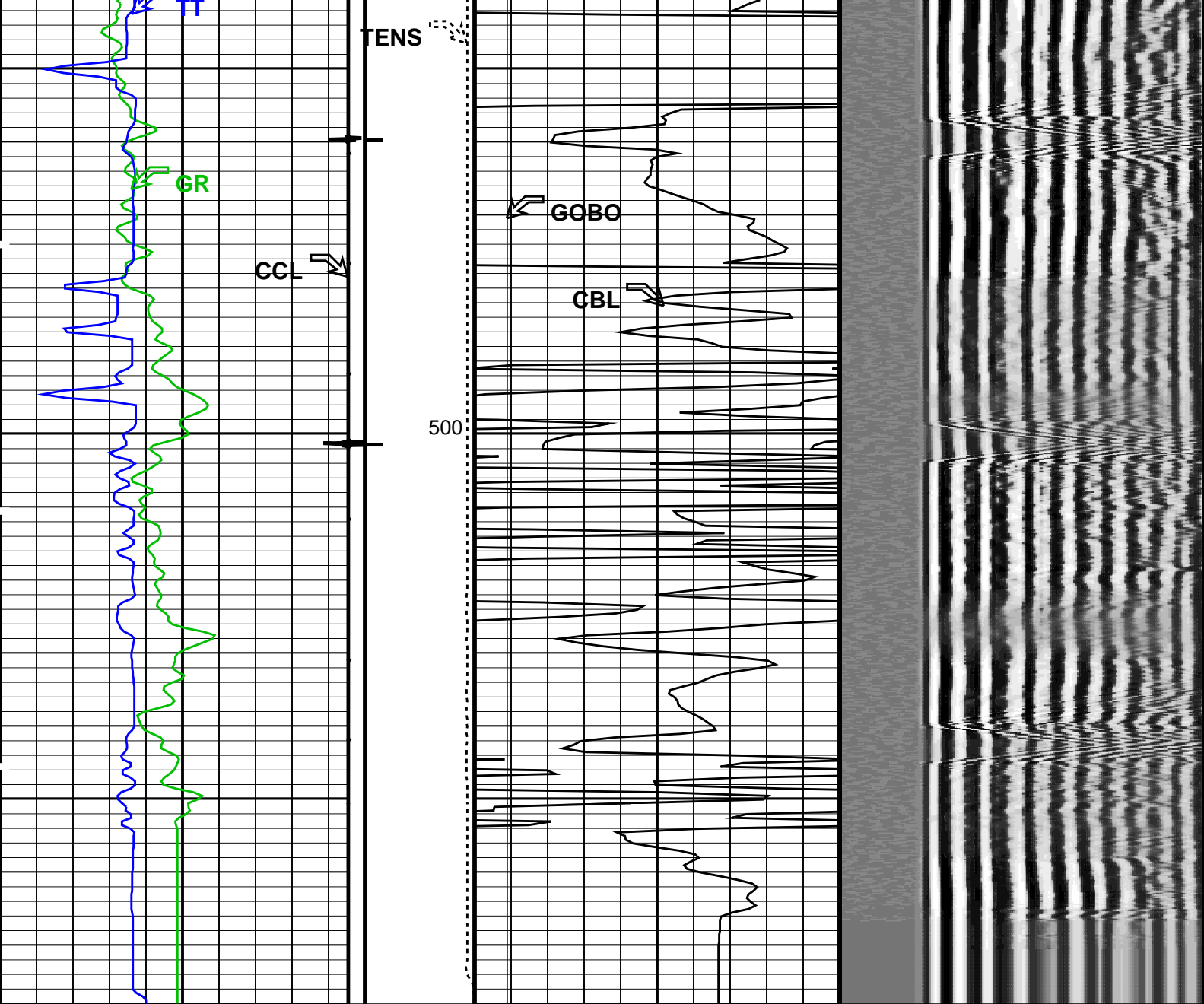
Input DLIS Files						
DEFAULT	SONIC_006LUP	FN:5	PRODUCER	23-Jul-2008 14:09	578.0 FT	44.2 FT
Output DLIS Files						
DEFAULT	SONIC_009PUP	FN:8	PRODUCER	23-Jul-2008 14:37	578.0 FT	46.0 FT

OP System Version: 15C0-309						
MCM						
DSLT-FTB	15C0-309	SGT-N		15C0-309		
DTC-H	15C0-309	CAL-Y		15C0-309		

Time Mark Every 50 S







Gamma Ray (GR) (GAPI)	Tension (TENS) (LBF)	CBL Amplitude (CBL) (MV)	Min 200	Amplitude Max	Max 1200
0 150	10000 0	0 10	VDL VariableDensity (VDL) (US)		
Transit Time (TT) (US)		CBL Amplitude (CBL) (MV)			
400 200		0 50			
Casing Collar Locator (CCL) (----		Good Bond (GOBO) (MV)			
-19 1		0 10			
CasCollar From CCL to T1		GoodBond From ACBL to GOBO			

PIP SUMMARY

Time Mark Every 60 S

Casing Collars

Information for DSLT Sonde Status and Casing Features

Sonde Type	SLS-W/E
Sonde Serial Number	1138
Casing Size (CSIZ)	8.62500 IN
Casing Weight (CWEI)	24.0 LB/F
Expected CBL Amplitude in Free Pipe Section (CBRA)	54.0 MV
Minimum Sonic Amplitude (MSA : 100% Cement)	0.318678 MV
Minimum Sonic Amplitude (MSA : 80% Cement)	0.889529 MV
Date of Master Calibration	6-MAR-2008
CBL Correction Factor (Master Calibration)	3.65849
Depth of Before Calibration (BDEP)	Not Recorded
CBL Adjustment Factor (CBAF : Before Calibration)	0.687500

Parameters

DLIS Name	Description	Value
DSLT-FTB: Digitizing	Sonic Logging Tool	DSLC_FTB
	Telemetry Mode	CBL_W
	DSLT Firing Mode	265 US
AMSG	Auxiliary Minimum Sliding Gate	0.6875
CBAF	CBL Adjustment Factor	100 US
CBLG	CBL Gate Width	0 US
DDEL	Digitizing Delay	120
DRCS	DSLT DLIS Recording Size	10
DSIN	Digitizing Sample Interval	289
DTFS	DSLC Telemetry Frame Size	120
DWCO	Digitizing Word Count	40
GAI	Manual Gain	0.889529 MV
GOBO	Good Bond	40
MAHTR	Manual High Threshold Reference	60
MGAI	Maximum Gain	30
MNHTR	Minimum High Threshold Reference	289 US
NMSG	Near Minimum Sliding Gate	750 US
NMXG	Near Maximum Sliding Gate	R15
RATE	Firing Rate	0 DB/F
SFAF	Sonic Formation Attenuation Factor	250 US/F
SGCL	Sliding Gate Closing Delta-T	50 US/F
SGDT	Sliding Gate Delta-T	80 US
SGW	Sliding Gate Width	5000
SLEV	Signal Level for AGC	3.4375
VDLG	VDL Manual Gain	OFF
WAGC	Waveform AGC Allow/Disallow	FULL
WMOD	Waveform Firing Mode	
CAL-Y: Casing Anomaly Locator - Y		
CCLD	CCL reset delay	12 IN
CCLT	CCL Detection Level	0.3 V
System and Miscellaneous		
DO	Depth Offset for Playback	0.0 FT
PP	Playback Processing	RECOMPUTE

Input DLIS Files

DEFAULT	SONIC_006LUP	FN:5	PRODUCER	23-Jul-2008 14:09	578.0 FT	44.2 FT
---------	--------------	------	----------	-------------------	----------	---------

Output DLIS Files

DEFAULT	SONIC_009PUP	FN:8	PRODUCER	23-Jul-2008 14:37
---------	--------------	------	----------	-------------------

MAXIS Field Log

Company: GENESIS GAS & OIL, LLC.

Well: FLETCHER GULCH 4-33

Input DLIS Files

DEFAULT	SONIC_005LUP	FN:4	PRODUCER	23-Jul-2008 14:02	574.0 FT	369.5 FT
DEFAULT	SONIC_009PUP	FN:8	PRODUCER	23-Jul-2008 14:37	578.0 FT	46.0 FT

Output DLIS Files

DEFAULT	SONIC 010PUP	FN:9	PRODUCER	23-Jul-2008 14:42	574.0 FT	371.0 FT
---------	--------------	------	----------	-------------------	----------	----------

OP System Version: 15C0-309

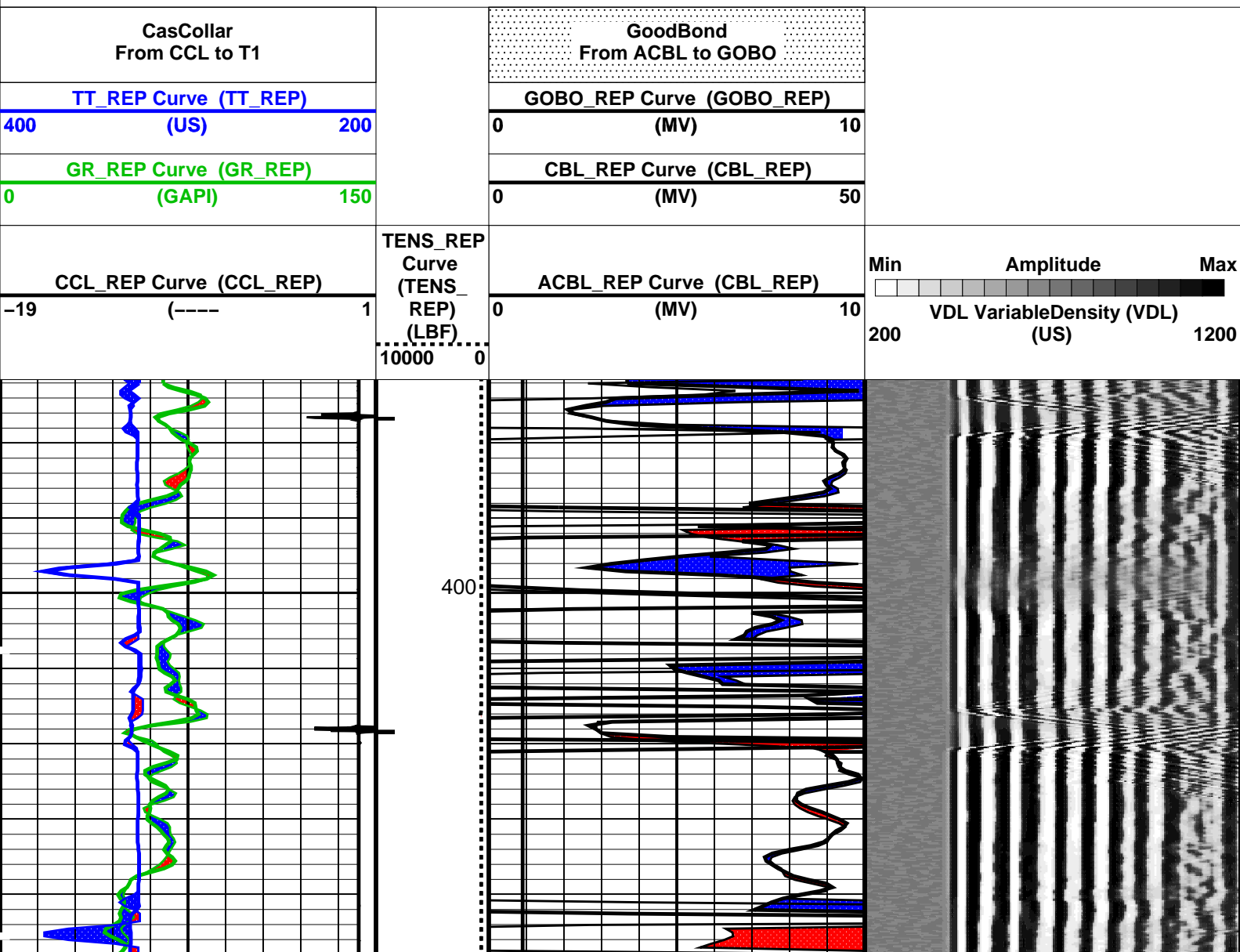
MCM

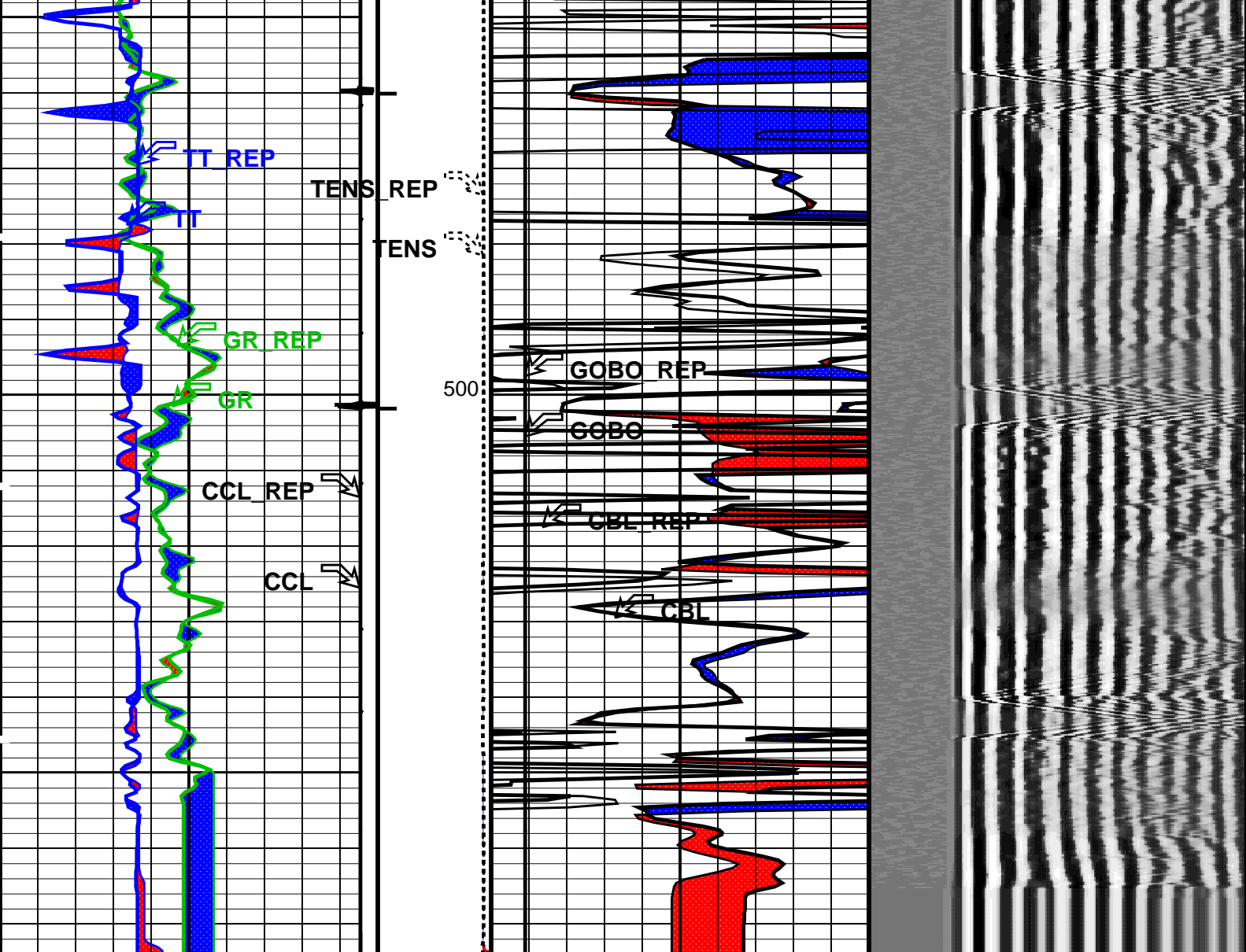
DSLT-FTB	15C0-309	SGT-N	15C0-309
DTC-H	15C0-309	CAL-Y	15C0-309

PIP SUMMARY

└─ Casing Collars

Time Mark Every 60 S





<div>CCL_REP Curve (CCL_REP)</div> <div><div>-19</div><div>(----</div><div>1</div></div> <div><div>10000</div><div>0</div></div>	<div>TENS_REP Curve (TENS_REP) (LBF)</div> <div><div>10000</div><div>0</div></div>	<div>ACBL_REP Curve (CBL_REP)</div> <div><div>0</div><div>(MV)</div><div>10</div></div>	<div>Min</div> <div><div></div><div></div><div></div><div></div><div></div><div></div><div></div><div></div><div></div><div></div><div></div><div></div><div></div><div></div><div></div><div></div><div></div><div></div><div></div><div></div><div></div><div></div><div></div><div></div><div></div><div></div><div></div><div></div><div></div><div></div><div></div><div></div><div></div><div></div><div></div><div></div><div></div><div></div><div></div><div></div><div></div><div></div><div></div><div></div><div></div><div></div><div></div><div></div><div></div><div></div><div></div><div></div><div></div><div></div><div></div><div></div><div></div><div></div><div></div><div></div><div></div><div></div><div></div><div></div><div></div><div></div><div></div><div></div><div></div><div></div><div></div><div></div><div></div><div></div><div></div><div></div><div></div><div></div><div></div><div></div><div></div><div></div><div></div><div></div><div></div><div></div><div></div><div></div><div></div><div></div><div></div><div></div><div></div><div></div><div></div><div></div><div></div><div></div><div></div><div></div><div></div><div></div><div></div><div></div><div></div><div></div><div></div><div></div><div></div><div></div><div></div><div></div><div></div><div></div><div></div><div></div><div></div><div></div><div></div><div></div><div></div><div></div><div></div><div></div><div></div><div></div><div></div><div></div><div></div><div></div><div></div><div></div><div></div><div></div><div></div><div></div><div></div><div></div><div></div><div></div><div></div><div></div><div></div><div></div><div></div><div></div><div></div><div></div><div></div><div></div><div></div><div></div><div></div><div></div><div></div><div></div><div></div><div></div><div></div><div></div><div></div><div></div><div></div><div></div><div></div><div></div><div></div><div></div><div></div><div></div><div></div><div></div><div></div><div></div><div></div><div></div><div></div><div></div><div></div><div></div><div></div><div></div><div></div><div></div><div></div><div></div><div></div><div></div><div></div><div></div><div></div><div></div><div></div><div></div><div></div><div></div><div></div><div></div><div></div><div></div><div></div><div></div><div></div><div></div><div></div><div></div><div></div><div></div><div></div><div></div><div></div><div></div><div></div><div></div><div></div><div></div><div></div><div></div><div></div><div></div><div></div><div></div><div></div><div></div><div></div><div></div><div></div><div></div><div></div><div></div><div></div><div></div><div></div><div></div><div></div><div></div><div></div><div></div><div></div><div></div><div></div><div></div><div></div><div></div><div></div><div></div><div></div><div></div><div></div><div></div><div></div><div></div><div></div><div></div><div></div><div></div><div></div><div></div><div></div><div></div><div></div><div></div><div></div><div></div><div></div><div></div><div></div><div></div><div></div><div></div><div></div><div></div><div></div><div></div><div></div><div></div><div></div><div></div><div></div><div></div><div></div><div></div><div></div><div></div><div></div><div></div><div></div><div></div><div></div><div></div><div></div><div></div><div></div><div></div><div></div><div></div><div></div><div></div><div></div><div></div><div></div><div></div><div></div><div></div><div></div><div></div><div></div><div></div><div></div><div></div><div></div><div></div><div></div><div></div><div></div><div></div><div></div><div></div><div></div><div></div><div></div><div></div><div></div><div></div><div></div><div></div><div></div><div></div><div></div><div></div><div></div><div></div><div></div><div></div><div></div><div></div><div></div><div></div><div></div><div></div><div></div><div></div><div></div><div></div><div></div><div></div><div></div><div></div><div></div><div></div><div></div><div></div><div></div><div></div><div></div><div></div><div></div><div></div><div></div><div></div><div></div><div></div><div></div><div></div><div></div><div></div><div></div><div></div><div></div><div></div><div></div><div></div><div></div><div></div><div></div><div></div><div></div><div></div><div></div><div></div><div></div><div></div><div></div><div></div><div></div><div></div><div></div><div></div><div></div><div></div><div></div><div></div><div></div><div></div><div></div><div></div><div></div><div></div><div></div><div></div><div></div><div></div><div></div><div></div><div></div><div></div><div></div><div></div><div></div><div></div><div></div><div></div><div></div><div></div><div></div><div></div><div></div><div></div><div></div><div></div><div></div><div></div><div></div><div></div><div></div><div></div><div></div><div></div><div></div><div></div><div></div><div></div><div></div><div></div><div></div><div></div><div></div><div></div><div></div><div></div><div></div><div></div><div></div><div></div><div></div><div></div><div></div><div></div><div></div><div></div><div></div><div></div><div></div><div></div><div></div><div></div><div></div><div></div><div></div><div></div><div></div><div></div><div></div><div></div><div></div><div></div><div></div><div></div><div></div><div></div><div></div><div></div><div></div><div></div><div></div><div></div><div></div><div></div><div></div><div></div><div></div><div></div><div></div><div></div><div></div><div></div><div></div><div></div><div></div><div></div><div></div><div></div><div></div><div></div><div></div><div></div><div></div><div></div><div></div><div></div><div></div><div></div><div></div><div></div><div></div><div></div><div></div><div></div><div></div><div></div><div></div><div></div><div></div><div></div><div></div><div></div><div></div><div></div><div></div><div></div><div></div><div></div><div></div><div></div><div></div><div></div><div></div><div></div><div></div><div></div><div></div><div></div><div></div><div></div><div></div><div></div><div></div><div></div><div></div><div></div><div></div><div></div><div></div><div></div><div></div><div></div><div></div><div></div><div></div><div></div><div></div><div></div><div></div><div></div><div></div><div></div><div></div><div></div><div></div><div></div><div></div><div></div><div></div><div></div><div></div><div></div><div></div><div></div><div></div><div></div><div></div><div></div><div></div><div></div><div></div><div></div><div></div><div></div><div></div><div></div><div></div><div></div><div></div><div></div><div></div><div></div><div></div><div></div><div></div><div></div><div></div><div></div><div></div><div></div><div></div><div></div><div></div><div></div><div></div><div></div><div></div><div></div><div></div><div></div><div></div><div></div><div></div><div></div><div></div><div></div><div></div><div></div><div></div><div></div><div></div><div></div><div></div><div></div><div></div><div></div><div></div><div></div><div></div><div></div><div></div><div></div><div></div><div></div><div></div><div></div><div></div><div></div><div></div><div></div><div></div><div></div><div></div><div></div><div></div><div></div><div></div><div></div><div></div><div></div><div></div><div></div><div></div><div></div><div></div><div></div><div></div><div></div><div></div><div></div><div></div><div></div><div></div><div></div><div></div><div></div><div></div><div></div><div></div><div></div><div></div><div></div><div></div><div></div><div></div><div></div><div></div><div></div><div></div><div></div><div></div><div></div><div></div><div></div><div></div><div></div><div></div><div></div><div></div><div></div><div></div><div></div><div></div><div></div><div></div><div></div><div></div><div></div><div></div><div></div><div></div><div></div><div></div><div></div><div></div><div></div><div></div><div></div><div></div><div></div><div></div><div></div><div></div><div></div><div></div><div></div><div></div><div></div><div></div><div></div><div></div><div></div><div></div><div></div><div></div><div></div><div></div><div></div><div></div><div></div><div></div><div></div><div></div><div></div><div></div><div></div><div></div><div></div><div></div><div></div><div></div><div></div><div></div><div></div><div></div><div></div><div></div><div></div><div></div><div></div><div></div><div></div><div></div><div></div><div></div><div></div><div></div><div></div><div></div><div></div><div></div><div></div><div></div><div></div><div></div><div></div><div></div><div></div><div></div><div></div><div></div><div></div><div></div><div></div><div></div><div></div><div></div><div></div><div></div><div></div><div></div><div></div><div></div><div></div><div></div><div></div><div></div><div></div><div></div><div></div><div></div><div></div><div></div><div></div><div></div><div></div><div></div><div></div><div></div><div></div><div></div><div></div><div></div><div></div><div></div><div></div><div></div><div></div><div></div><div></div><div></div><div></div><div></div><div></div><div></div><div></div><div></div><div></div><div></div><div></div><div></div><div></div><div></div><div></div><div></div><div></div><div></div><div></div><div></div><div></div><div></div><div></div><div></div><div></div><div></div><div></div><div></div><div></div><div></div><div></div><div></div><div></div><div></div><div></div><div></div><div></div><div></div><div></div><div></div><div></div><div></div><div></div><div></div><div></div><div></div><div></div><div></div><div></div><div></div><div></div><div></div><div></div><div></div><div></div><div></div><div></div><div></div><div></div><div></div><div></div><div></div><div></div><div></div><div></div><div></div><div></div><div></div><div></div><div></div><div></div><div></div><div></div><div></div><div></div><div></div><div></div><div></div><div></div><div></div><div></div><div></div><div></div><div></div><div></div><div></div><div></div><div></div><div></div><div></div><div></div><div></div><div></div><div></div><div></div><div></div><div></div><div></div><div></div><div></div><div></div><div></div><div></div><div></div><div></div><div></div><div></div><div></div><div></div><div></div><div></div><div></div><div></div><div></div><div></div><div></div><div></div><div></div><div></div><div></div><div></div><div></div><div></div><div></div><div></div><div></div><div></div><div></div><div></div><div></div><div></div><div></div><div></div><div></div><div></div><div></div><div></div><div></div><div></div><div></div><div></div><div></div><div></div><div></div><div></div><div></div><div></div><div></div><div></div><div></div><div></div><div></div><div></div><div></div><div></div><div></div><div></div><div></div><div></div><div></div><div></div><div></div><div></div><div></div><div></div><div></div><div></div><div></div><div></div><div></div><div></div><div></div><div></div><div></div><div></div><div></div><div></div><div></div><div></div><div></div><div></div><div></div><div></div><div></div><div></div><div></div><div></div><div></div><div></div><div></div><div></div><div></div><div></div><div></div><div></div><div></div><div></div><div></div><div></div><div></div><div></div><div></div><div></div><div></div><div></div><div></div><div></div><div></div><div></div><div></div><div></div><div></div><div></div><div></div><div></div><div></div><div></div><div></div><div></div><div></div><div></div><div></div><div></div><div></div><div></div><div></div><div></div><div></div><div></div><div></div><div></div><div></div><div></div><div></div><div></div><div></div><div></div><div></div><div></div><div></div><div></div><div></div><div></div><div></div><div></div><div></div><div></div><div></div><div></div><div></div><div></div><div></div><div></div><div></div><div></div><div></div><div></div><div></div><div></div><div></div><div></div><div></div><div></div><div></div><div></div><div></div><div></div><div></div><div></div><div></div><div></div><div></div><div></div><div></div><div></div><div></div><div></div><div></div><div></div><div></div><div></div><div></div><div></div><div></div><div></div><div></div><div></div><div></div><div></div><div></div><div></div><div></div><div></div><div></div><div></div><div></div><div></div><div></div><div></div><div></div><div></div><div></div><div></div><div></div><div></div><div></div><div></div><div></div><div></div><div></div><div></div><div></div><div></div><div></div><div></div><div></div><div></div><div></div><div></div><div></div><div></div><div></div><div></div><div></div><div></div><div></div><div></div><div></div><div></div><div></div><div></div><div></div><div></div><div></div><div></div><div></div><div></div><div></div><div></div><div></div><div></div><div></div><div></div><div></div><div></div><div></div><div></div><div></div><div></div><div></div><div></div><div></div><div></div><div></div><div></div><div></div><div></div><div></div><div></div><div></div><</div>
--	--	---	---

PIP SUMMARY

└─ Casing Collars

Time Mark Every 60 S

Format: CBL_VDL_REP Vertical Scale: 5" per 100'

Graphics File Created: 23-Jul-2008 14:42

OP System Version: 15C0-309
MCM

DSLT-FTB	15C0-309	SGT-N	15C0-309
DTC-H	15C0-309	CAL-Y	15C0-309

Sonde Type	SLS-W/E
Sonde Serial Number	1138
Casing Size (CSIZ)	8.62500 IN
Casing Weight (CWEI)	24.0 LB/F
Expected CBL Amplitude in Free Pipe Section (CBRA)	54.0 MV
Minimum Sonic Amplitude (MSA : 100% Cement)	0.318678 MV
Minimum Sonic Amplitude (MSA : 80% Cement)	0.889529 MV
Date of Master Calibration	6-MAR-2008
CBL Correction Factor (Master Calibration)	3.65849
Depth of Before Calibration (BDEP)	Not Recorded
CBL Adjustment Factor (CBAF : Before Calibration)	0.687500

Parameters

DLIS Name	Description	Value	
DSLT-FTB: Digitizing Sonic Logging Tool			
	Telemetry Mode	DSLC_FTB	
	DSLT Firing Mode	CBL_W	
AMSG	Auxiliary Minimum Sliding Gate	265	US
CBAF	CBL Adjustment Factor	0.6875	
CBLG	CBL Gate Width	100	US
DDEL	Digitizing Delay	0	US
DRCS	DSLT DLIS Recording Size	120	
DSIN	Digitizing Sample Interval	10	
DTFS	DSLC Telemetry Frame Size	289	
DWCO	Digitizing Word Count	120	
GAI	Manual Gain	40	
GOBO	Good Bond	0.889529	MV
MAHTR	Manual High Threshold Reference	40	
MGAI	Maximum Gain	60	
MNHTR	Minimum High Threshold Reference	30	
NMSG	Near Minimum Sliding Gate	289	US
NMXG	Near Maximum Sliding Gate	750	US
RATE	Firing Rate	R15	
SFAF	Sonic Formation Attenuation Factor	0	DB/F
SGCL	Sliding Gate Closing Delta-T	250	US/F
SGDT	Sliding Gate Delta-T	50	US/F
SGW	Sliding Gate Width	80	US
SLEV	Signal Level for AGC	5000	
VDLG	VDL Manual Gain	3.4375	
WAGC	Waveform AGC Allow/Disallow	OFF	
WMOD	Waveform Firing Mode	FULL	
CAL-Y: Casing Anomaly Locator - Y			
CCLD	CCL reset delay	12	IN
CCLT	CCL Detection Level	0.3	V
System and Miscellaneous			
DO	Depth Offset for Playback	0.0	FT
DORL	Depth Offset for Repeat Analysis	0.0	FT
PP	Playback Processing	RECOMPUTE	

Input DLIS Files

DEFAULT	SONIC_005LUP	FN:4	PRODUCER	23-Jul-2008 14:02	574.0 FT	369.5 FT
DEFAULT	SONIC_009PUP	FN:8	PRODUCER	23-Jul-2008 14:37	578.0 FT	46.0 FT

Output DLIS Files

DEFAULT	SONIC_010PUP	FN:9	PRODUCER	23-Jul-2008 14:42
---------	--------------	------	----------	-------------------

MAXIS Field Log

Calibration and Check Summary

Measurement	Nominal	Master	Before	After	Change	Limit	Units
-------------	---------	--------	--------	-------	--------	-------	-------

Digitizing Sonic Logging Tool Master Calibration – DSLT CBL/CBLB Amplitude Normalization in SFT–255

Master: 6–Mar–2008 9:48

CBL Raw Amplitude	33.00	31.71	--	--	--	--	MV
CBLB Raw Amplitude	46.00	33.18	--	--	--	--	MV

Scintillation Gamma Ray Tool – N Wellsite Calibration – Detector Calibration

Before: 18–Jul–2008 17:48

Gamma Ray (Jig – Bkg)	153.7	N/A	153.7	N/A	N/A	13.97	GAPI
Gamma Ray (Calibrated)	165.0	N/A	165.0	N/A	N/A	15.00	GAPI

Digitizing Sonic Logging Tool / Equipment Identification

Primary Equipment:


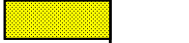
BHC Sonde	SLS – W	1138
Digitizing Sonic Logging Cartridge	DSLCL – B	

Auxiliary Equipment:

Electronics Cartridge Housing	ECH – KH	
-------------------------------	----------	--

Digitizing Sonic Logging Tool Master Calibration

DSLT CBL/CBLB Amplitude Normalization in SFT–255

Phase	CBL Raw Amplitude MV			Value	Phase	CBLB Raw Amplitude MV			Value
Master				31.71	Master				33.18
	27.00 (Minimum)	33.00 (Nominal)	43.00 (Maximum)			27.00 (Minimum)	46.00 (Nominal)	68.00 (Maximum)	

Master: 6–Mar–2008 9:48

Scintillation Gamma Ray Tool – N / Equipment Identification

Primary Equipment:




Scintillation Gamma Cartridge	SGC – TB
Scintillation Gamma Detector	SGD – TAB

Auxiliary Equipment:

Scintillation Gamma Housing	SGH – K
Gamma Source Radioactive	GSR – U/Y

Scintillation Gamma Ray Tool – N Wellsite Calibration

Detector Calibration

Phase	Gamma Ray Background GAPI			Value	Phase	Gamma Ray (Jig – Bkg) GAPI			Value	Phase	Gamma Ray (Calibrated) GAPI			Value
Before				33.20	Before				153.7	Before				165.0
	0 (Minimum)	30.00 (Nominal)	120.0 (Maximum)			139.7 (Minimum)	153.7 (Nominal)	167.6 (Maximum)			150.0 (Minimum)	165.0 (Nominal)	180.0 (Maximum)	

Before: 18–Jul–2008 17:48

DTS Telemetry Tool / Equipment Identification

Primary Equipment:

DTC–H Auxiliary Cartridge	DTCH – A
---------------------------	----------

DTC-H Auxiliary Cartridge
DTC-H Telemetry Cartridge

DTC-H A
DTCH - A

Auxiliary Equipment:

DTCH Telemetry Cartridge Housing

ECH - KC

10316

Company: **GENESIS GAS & OIL, LLC.**

Schlumberger

Well: **FLETCHER GULCH 4-33**

Field: **FLETCHER GULCH PROSPECT**

County: **RIO BLANCO**

State: **CO**

CBL/VDL CEMENT BOND LOG

GAMMA RAY

CASING COLLAR LOCATOR