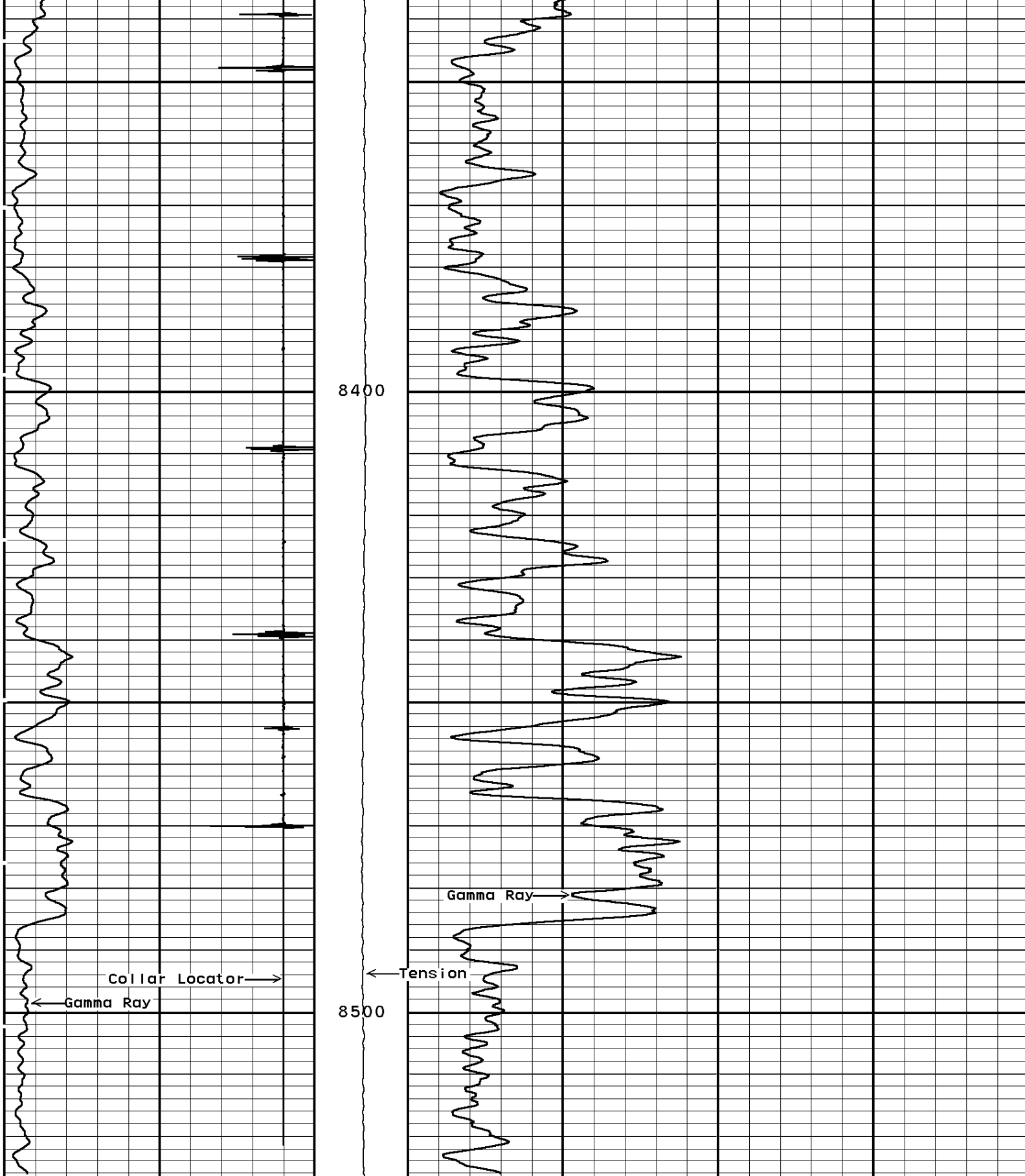


All interpretations of log data are opinions based on inferences from electrical or other measurements. We do not guarantee the accuracy or correctness of any interpretation or recommendation and we shall not be liable or responsible for any loss, cost, damages or expenses incurred or sustained by anyone resulting from any interpretation or recommendation made by any of our employees or agents.

THANK YOU FOR CHOOSING WEATHERFORD WIRELINE SERVICES FARMINGTON,NM (505)564-9131

[illegible]



Gamma Ray		Tension	MC:Gamma Ray	
0	API	200	0	API
Collar Locator		0 LB 3000	100	
-7200.0	Millivolts	800.0		

136429 136429GRM3

MAIN PASS

DEPTH SCALE: 5":100'

VERSION: 2006.07.04.29 RLS

SYSTEM CONSTANTS

NAME	DESCRIPTION	VALUE	UNITS
CCL0	Ccl Offset	0	
SWAN	Sheave Wheel Angle	0.00	Degrees

DEPTH SCALE: 5":100'

VERSION: 2006.07.04.29 RLS

REPEAT PASS

136429 136429GR3R

FINISH DEPTH: 8291.6 Feet DIRECTION: UP DATE: 06/30/2007 TIME: 18:46 MODE: ORIGINAL
RECOMPUTED DATE: 06/30/2007 TIME: 18:47

Collar Locator

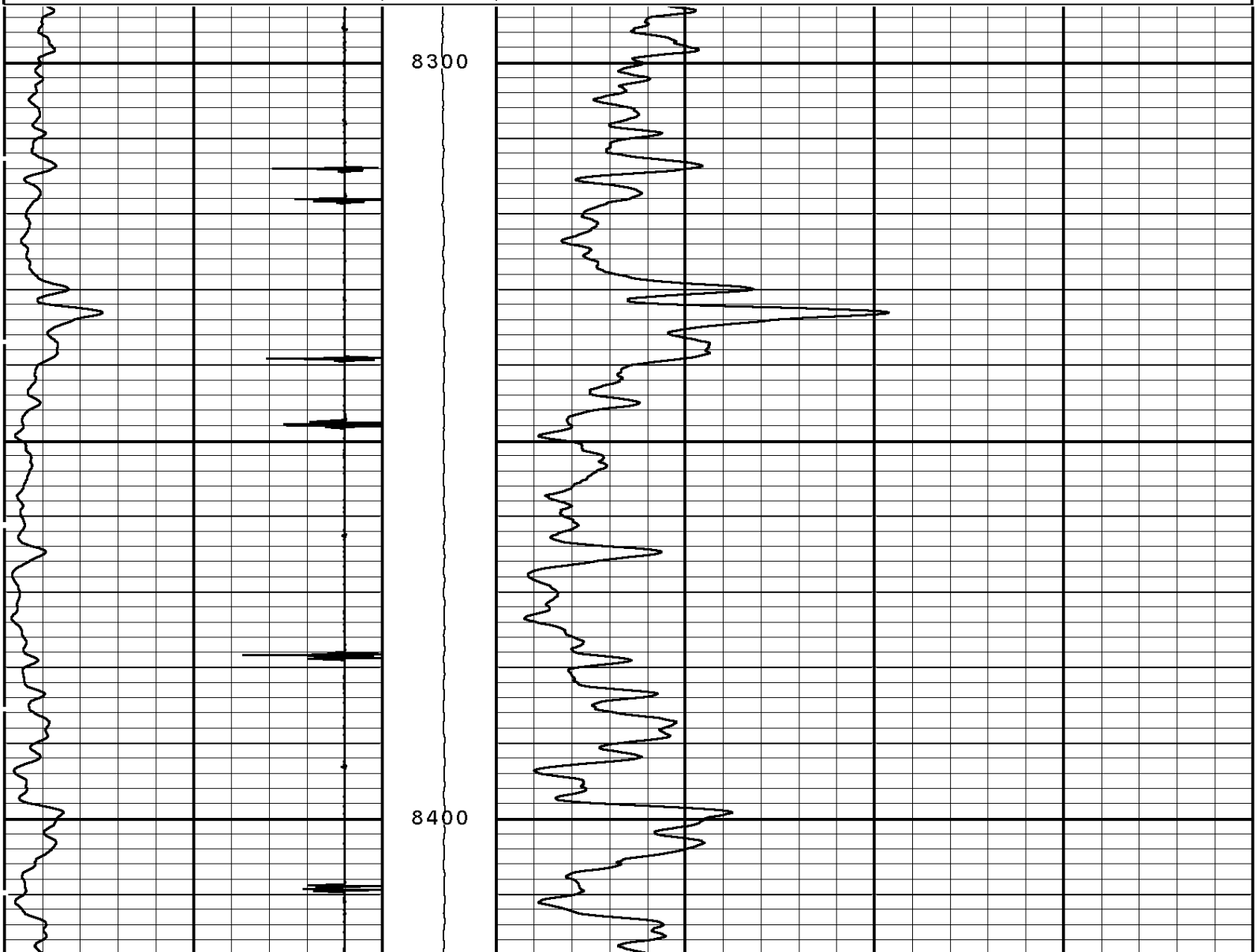
-7200.0 Millivolts 800.0

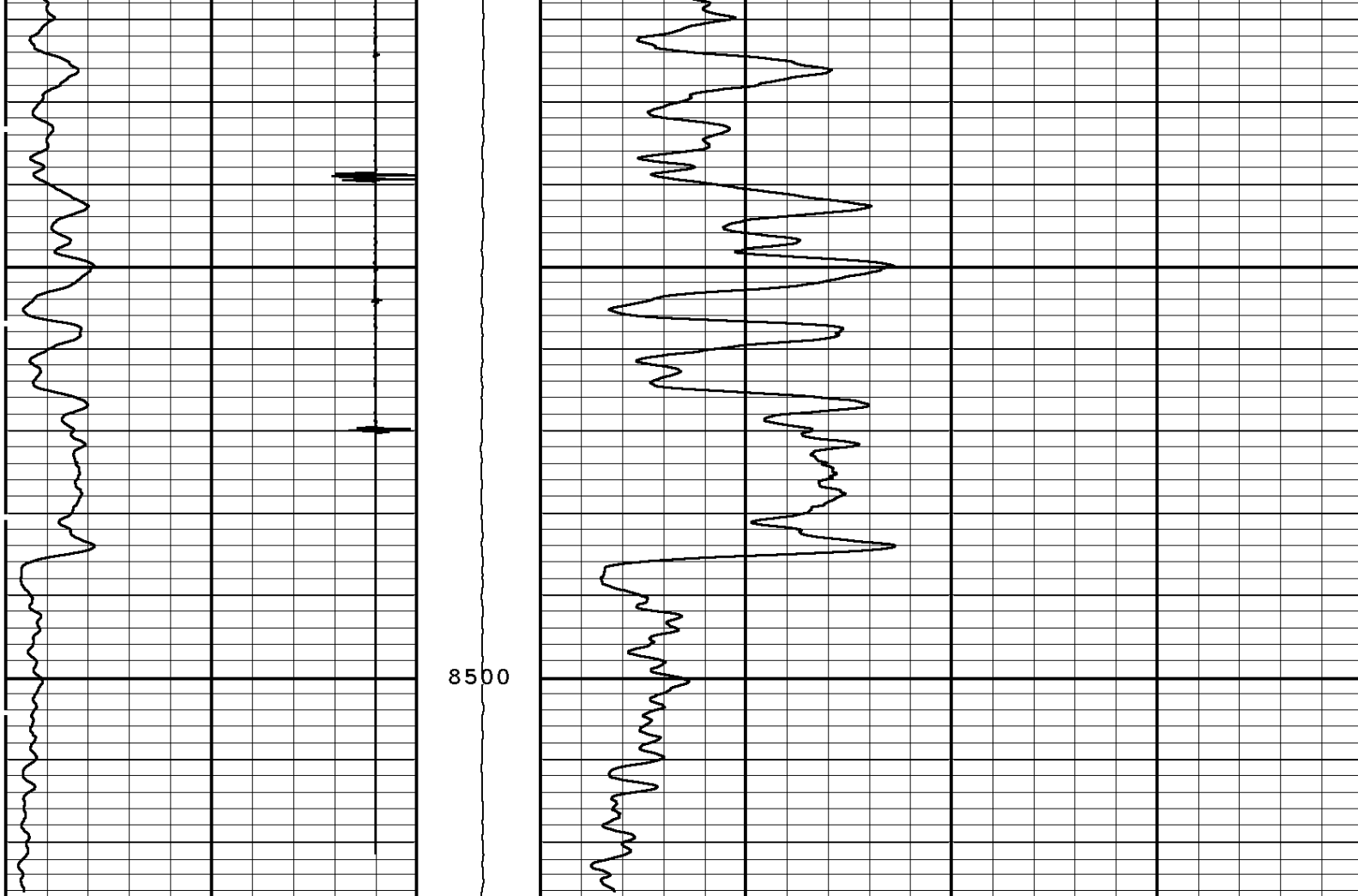
Gamma Ray

Tension

MC:Gamma Ray

0 API 200 0 LB 3000 0 API 100





Gamma Ray		Tension	MC:Gamma Ray	
0	API	200	0	API
Collar Locator		0 LB 3000	100	
-7200.0	Millivolts	800.0		

START DEPTH: 8526.5 DIRECTION: UP DATE: 06/30/2007 TIME: 18:46 MODE: ORIGINAL
RECOMPUTED DATE: 06/30/2007 TIME: 18:46
136429 136429GR3R

REPEAT PASS

DEPTH SCALE: 5":100' VERSION: 2006.07.04.29 RLS

SYSTEM CONSTANTS			
NAME	DESCRIPTION	VALUE	UNITS
CCL0	Ccl Offset	0	
SWAN	Sheave Wheel Angle	0.00	Degrees

1 7/16" Cablehead

Weight 1 LB.
Length 12 IN.
Max. Diameter 1.44 IN.
Total Stack Weight 29 LBS. in air
Total Stack Length 7.32 FT.

1.00 in dia

Casing Collar Locator

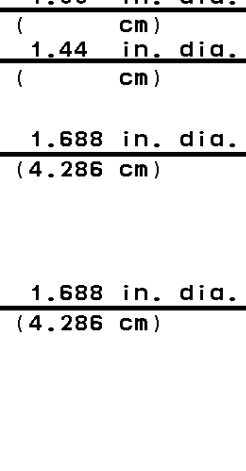
Length 1.8 FT.

Gamma Ray

Weight 28 LBS.
Length 4.51 FT.

CCL 5.2 FT.

GR 1.65 FT.



COMPANY KINDER MORGAN

WELL DOE CANYON #5

FIELD WILDCAT

COUNTY DOLORES STATE CO



Weatherford®