



Company: **ROSETTA RESOURCES OPERATING, LP**

Well: **WELP 10-16**

Field: **WILDCAT**

County: **YUMA**

State: **COLORADO**

**CEMENT BOND
GAMMA RAY CCL LOG**

County:	YUMA		
Field:	WILDCAT		
Location:	SESE		
Well:	WELP 10-16		
Company:	ROSETTA RESOURCES OPERATING, LP		
LOCATION			
SESE 601' FSL X 333' FEL		Elev.: K.B. 3930 ft G.L. 3918 ft D.F. 3929 ft	
Permanent Datum:	GROUND LEVEL	Elev.: 3918 ft	
Log Measured From:	KELLY BUSHING	12.0 ft above Perm. Datum	
Drilling Measured From:	KELLY BUSHING		
API Serial No. 05-125-11172-000C	Section 10	Township 1S	Range 45W

	Run 1	Run 2	Run 3
PVT DATA			
Oil Density			
Water Salinity			
Gas Gravity			
Bo			
Bw			
1/Bg			
Bubble Point Pressure			
Bubble Point Temperature			
Solution GOR			
Maximum Deviation			
CEMENTING DATA			
Primary/Squeeze	Primary		
Casing String No			
Lead Cement Type			
Volume			
Density			
Water Loss			
Additives			
Tail Cement Type			
Volume			
Density			
Water Loss			
Additives			
Expected Cement Top			

Logging Date	30-May-2008		
Run Number	1		
Depth Driller	2640 ft		
Schlumberger Depth	2596 ft		
Bottom Log Interval	2596 ft		
Top Log Interval	1240 ft		
Casing Fluid Type	WATER		
Salinity			
Density			
Fluid Level	0 ft		
BIT/CASING/TUBING STRING			
Bit Size	6.250 in		
From			
To			
Casing/Tubing Size	4.500 in		
Weight	10.5 lbm/ft		
Grade			
From			
To			
Maximum Recorded Temperatures	120 degF		
Logger On Bottom	30-May-2008		
Unit Number	Location	318	FT MORGAN CO
Recorded By	SAM HOPPER		
Witnessed By	JOHN ABBOTT		

Logging Date			
Run Number			
Depth Driller			
Schlumberger Depth			
Bottom Log Interval			
Top Log Interval			
Casing Fluid Type			
Salinity			
Density			
Fluid Level			
BIT/CASING/TUBING STRING			
Bit Size			
From			
To			
Casing/Tubing Size			
Weight			
Grade			
From			
To			
Maximum Recorded Temperatures			
Logger On Bottom			
Unit Number	Location		
Recorded By			
Witnessed By			

SP1-A 1876
PSTC
PBMS-A
10k_Sapphire_Mano
RTD_Thermometer
GR
CCL
PBMS

GR — 24.6

Well_Temp — 21.5
Manometer — 21.4
CCL — 20.8
PBMS PSTC — 20.0

SCMT-CB
SCMC-CA 8212
SECH-CA 8210
CMIR-AG
SCMS-CB 8252
SCMX-CA 8212

20.0

DT — 10.9

CBL5 DTSC — 9.4

CBL3 — 8.4
MAP — 7.9

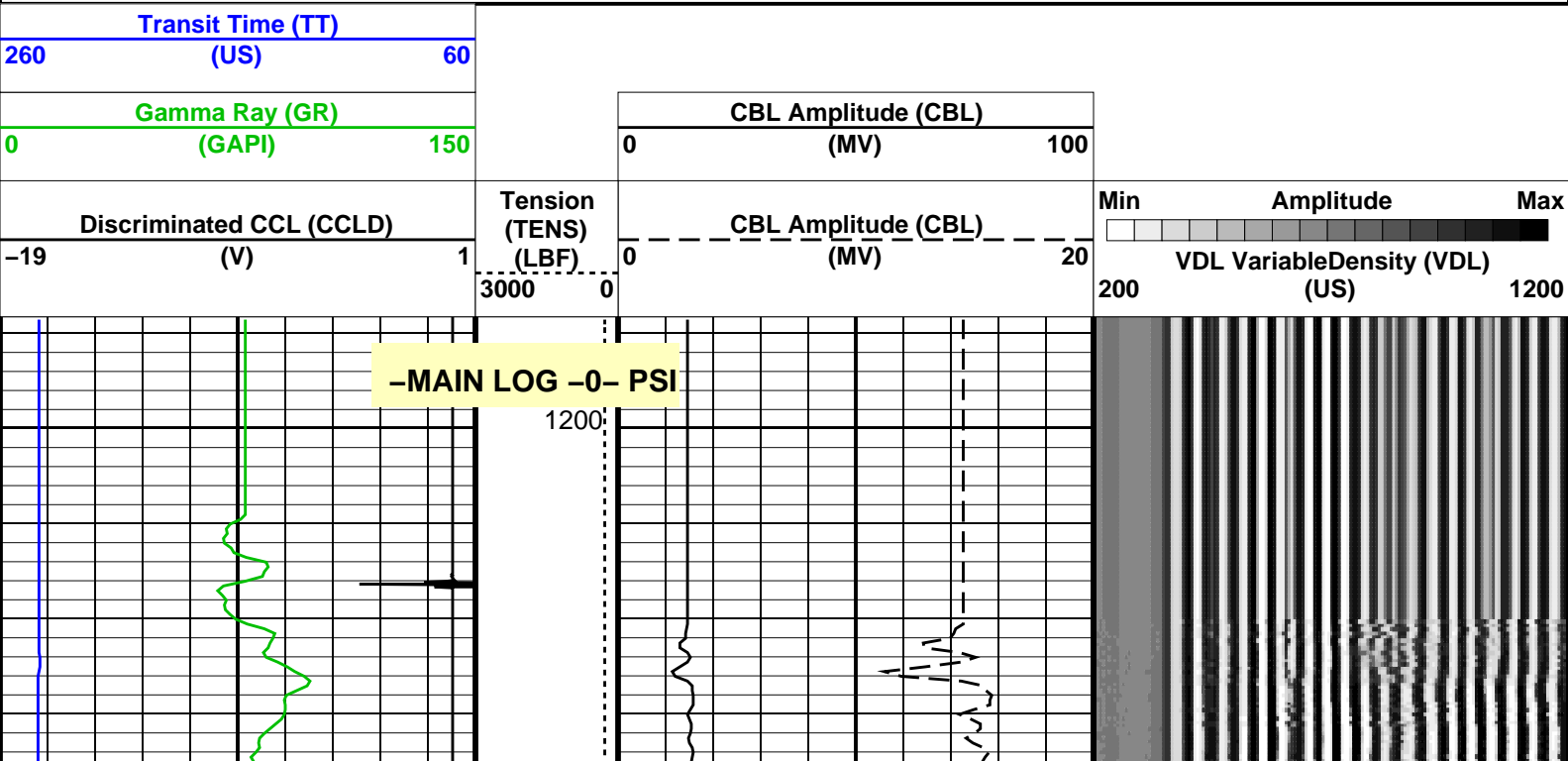
AUX — 6.9

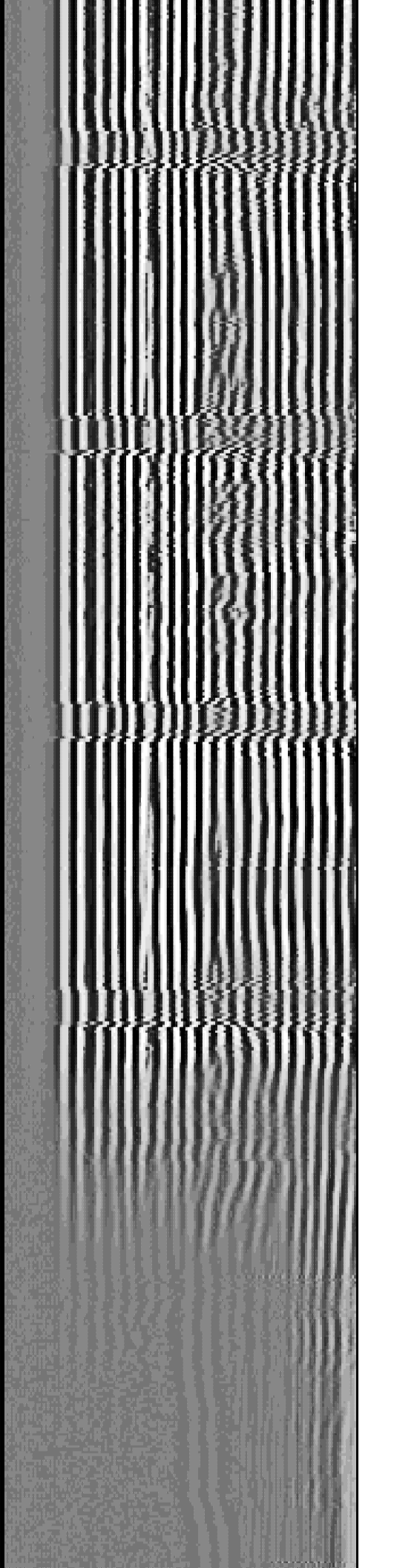
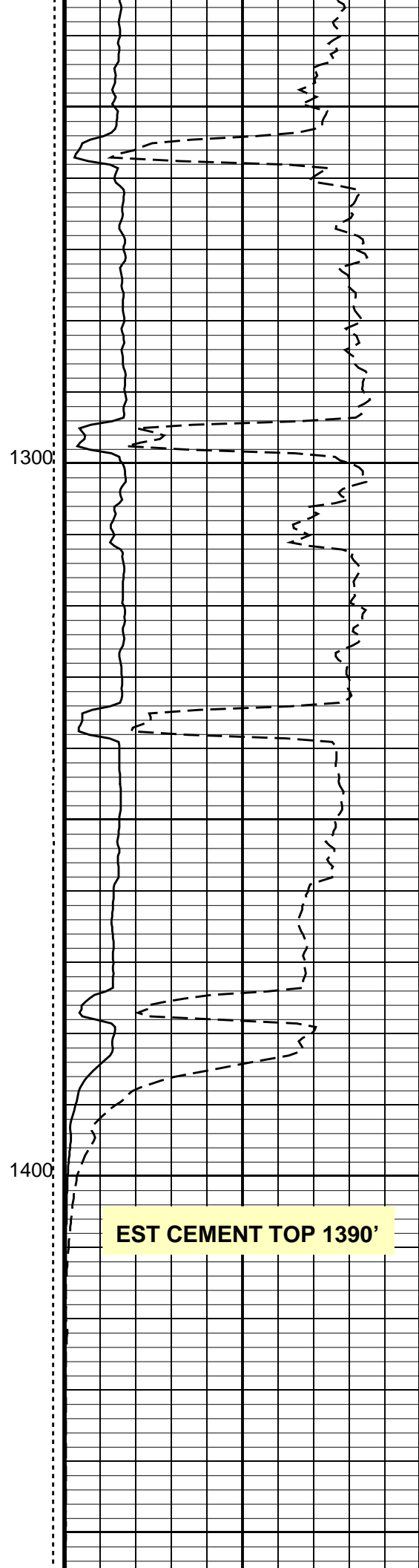
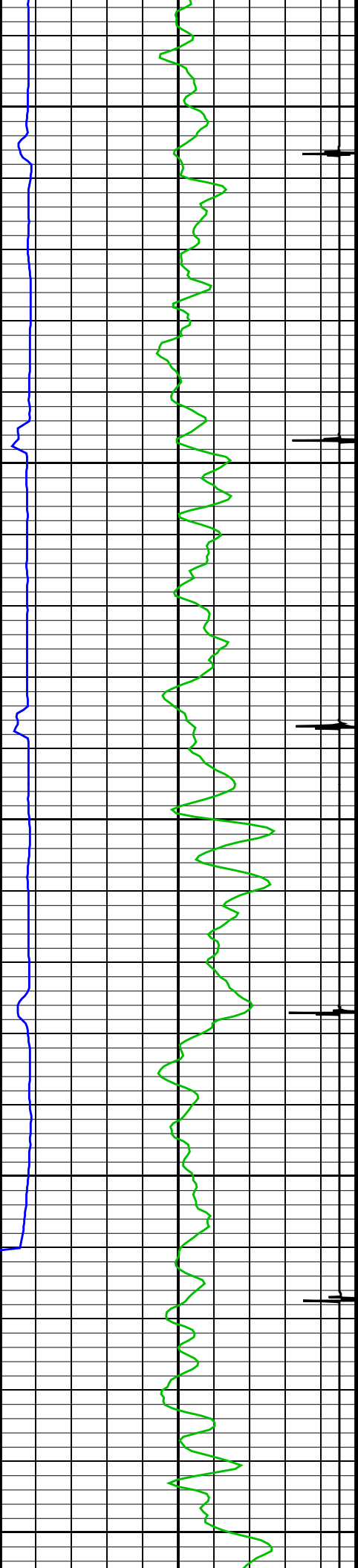
HV
Tension SCMT — 0.0
TOOL ZERO

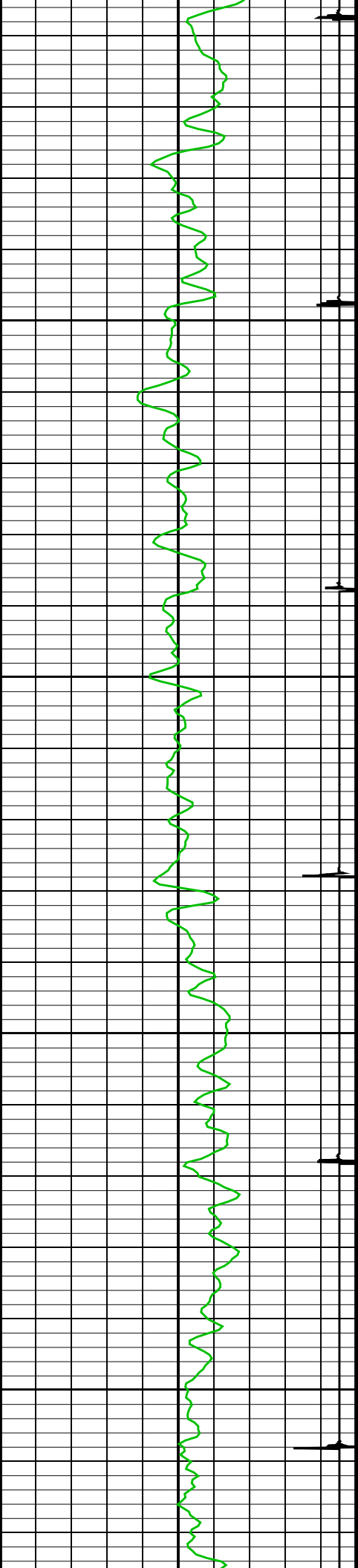
MAXIMUM STRING DIAMETER 1.69 IN
MEASUREMENTS RELATIVE TO TOOL ZERO
ALL LENGTHS IN FEET

Input DLIS Files						
DEFAULT	SCMT_PSP_003LUP	FN:2	PRODUCER	30-May-2008 07:34	2619.5 FT	1206.0 FT
Output DLIS Files						
DEFAULT	SCMT_PSP_004PUP	FN:3	PRODUCER	30-May-2008 07:56	2621.5 FT	1188.0 FT

OP System Version: 15C0-309			
MCM			
SCMT-CB	SRPC-3525-DEC_2007_OP15	PSPT-A/B	SRPC-3525-DEC_2007_OP15

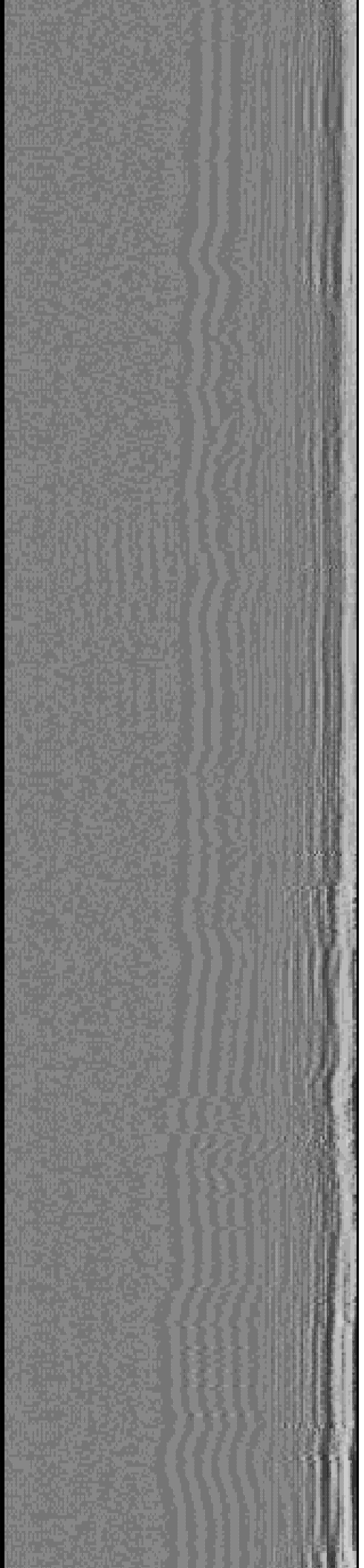
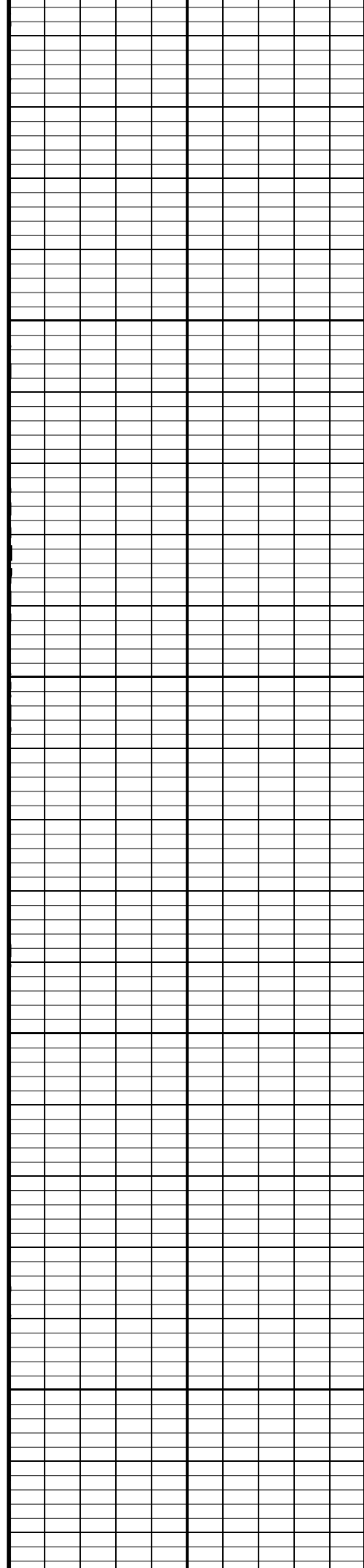


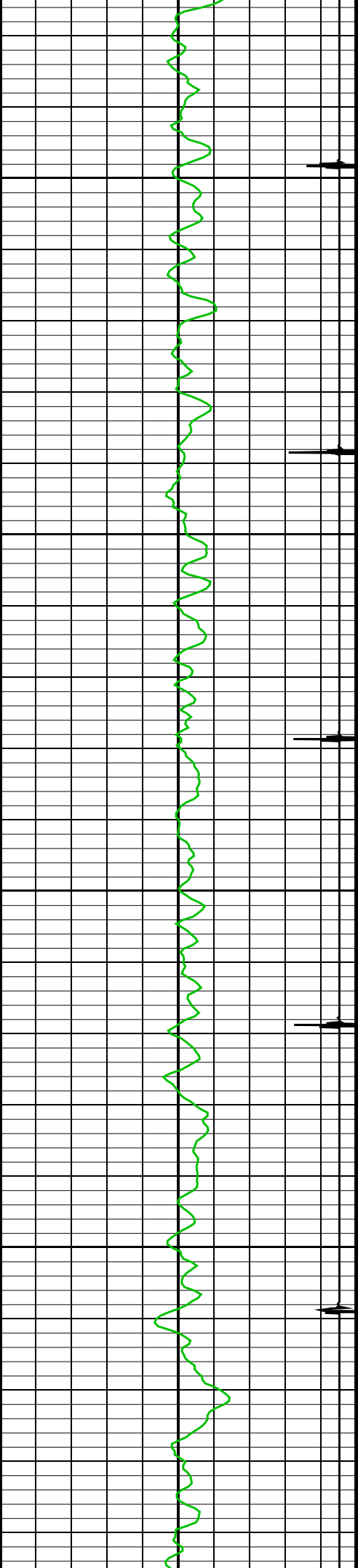




1500

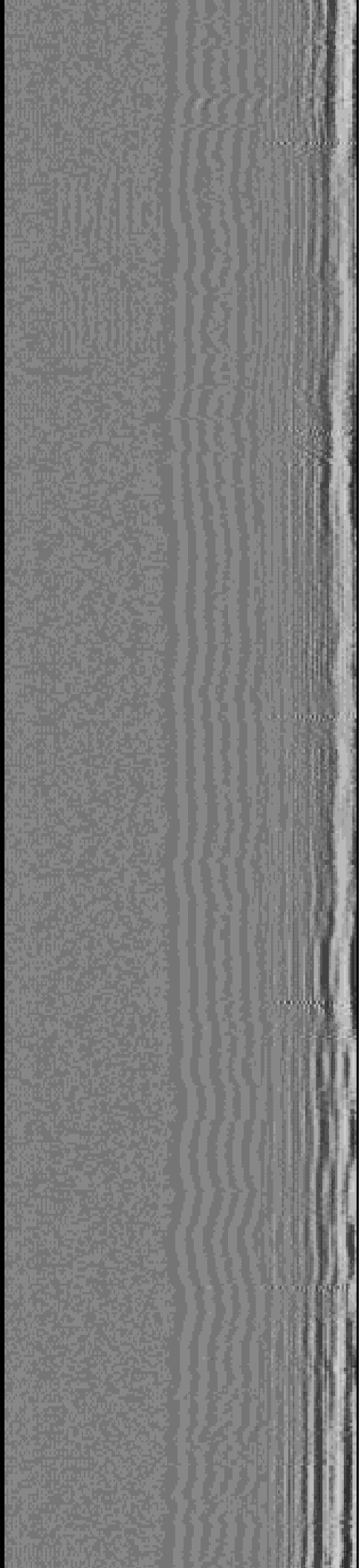
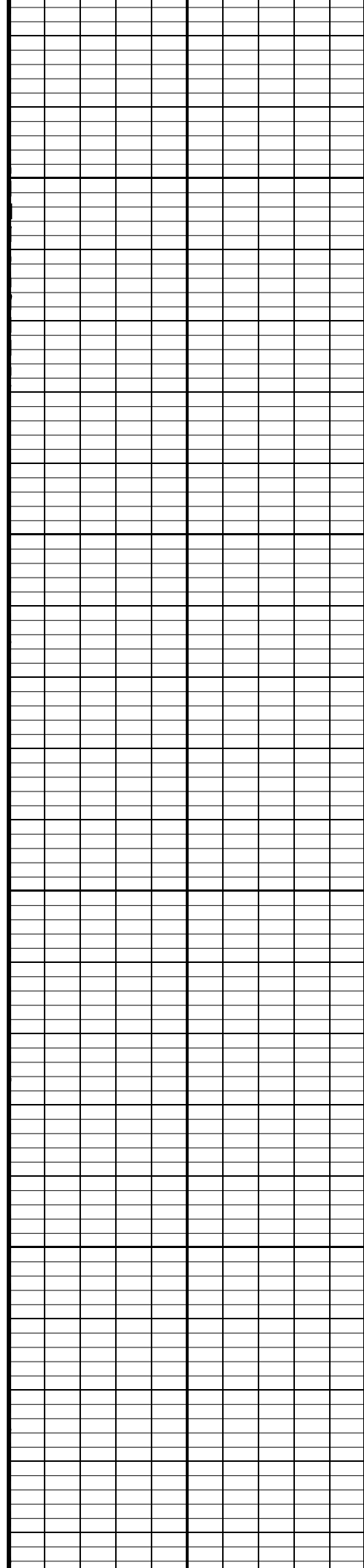
1600

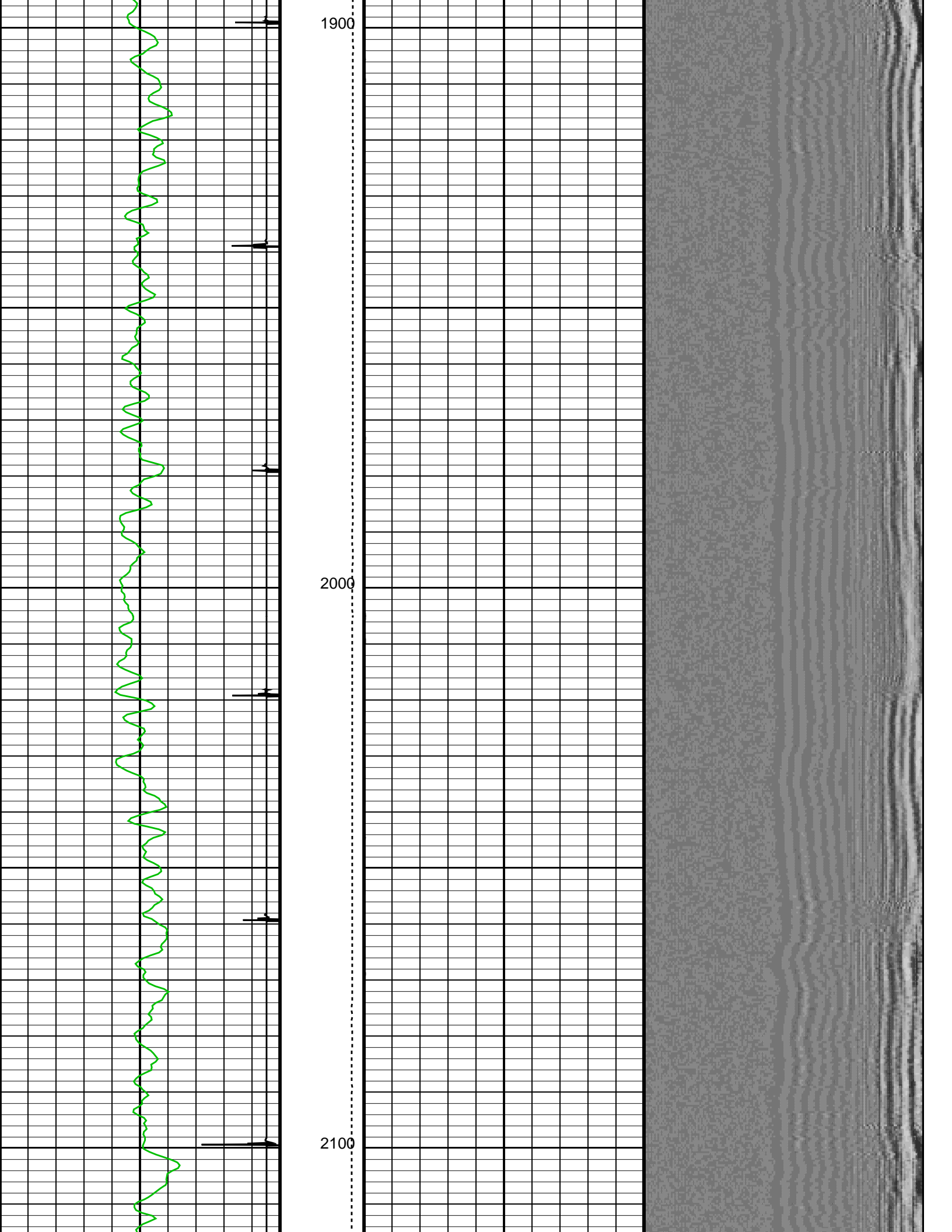


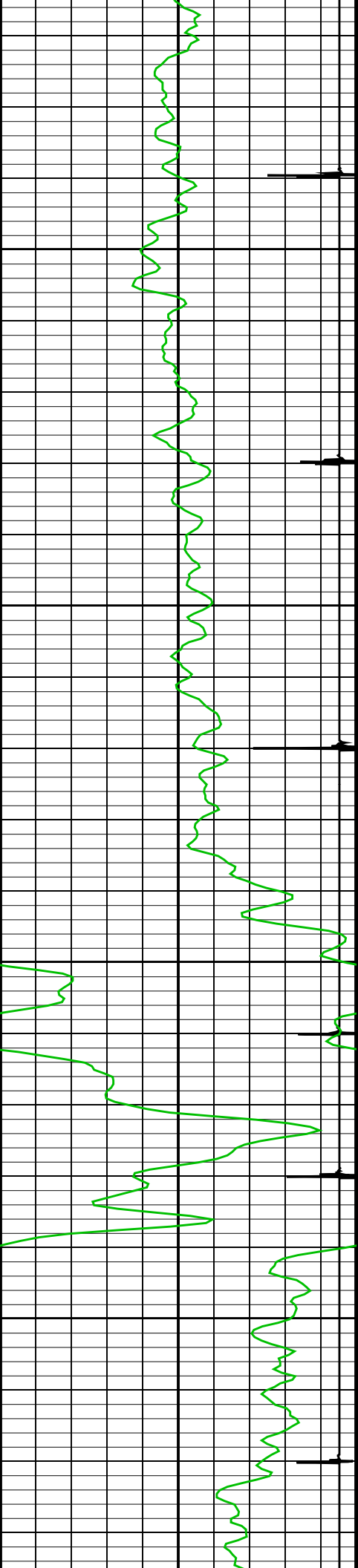


1700

1800



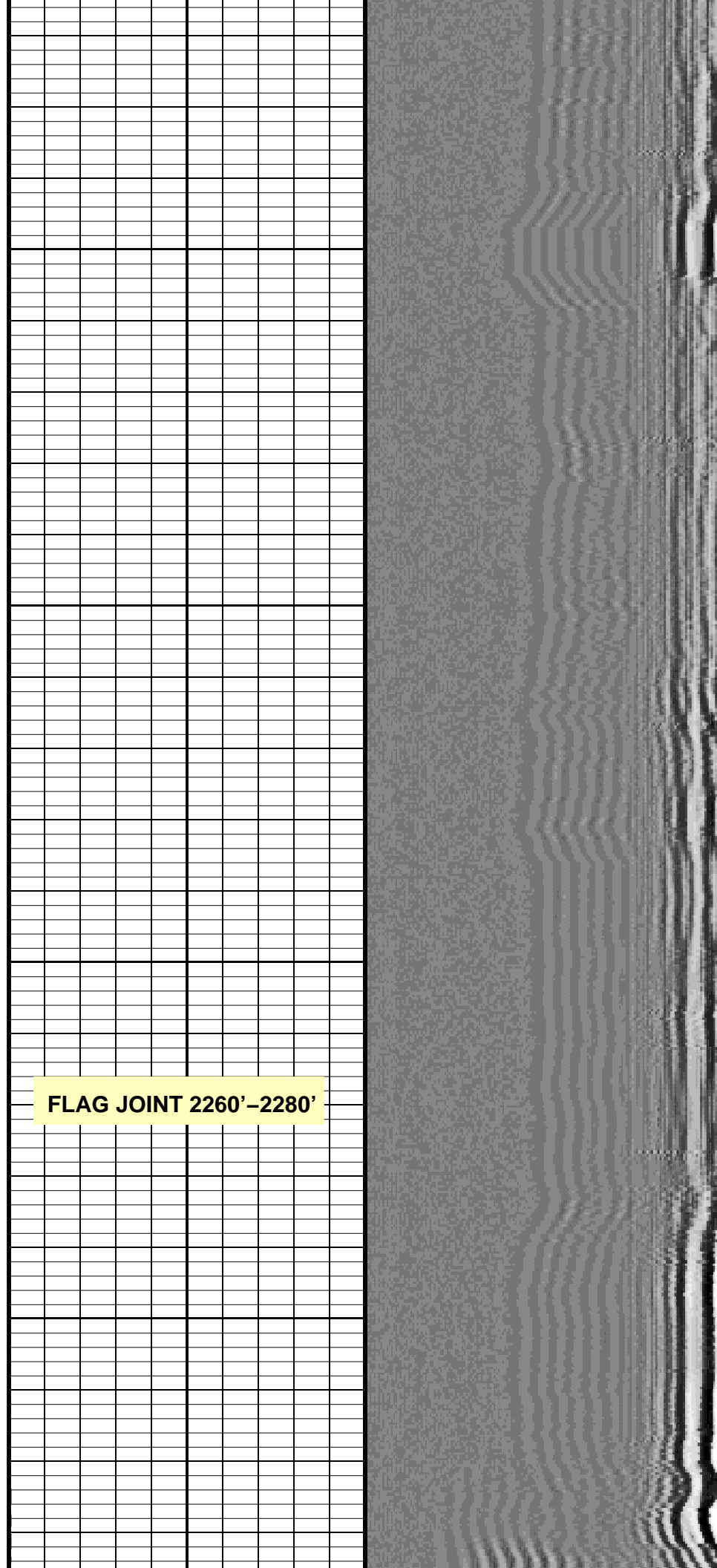


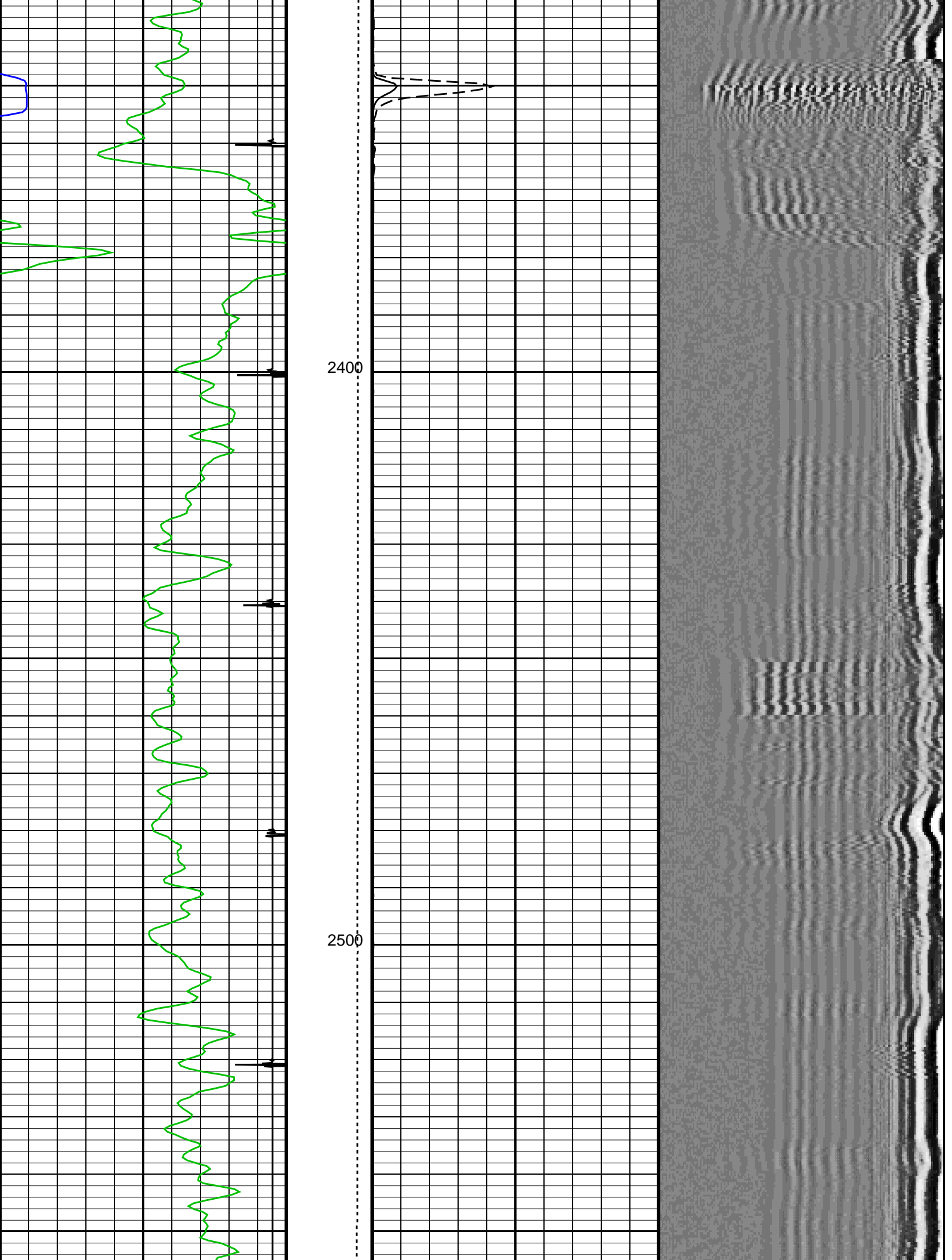


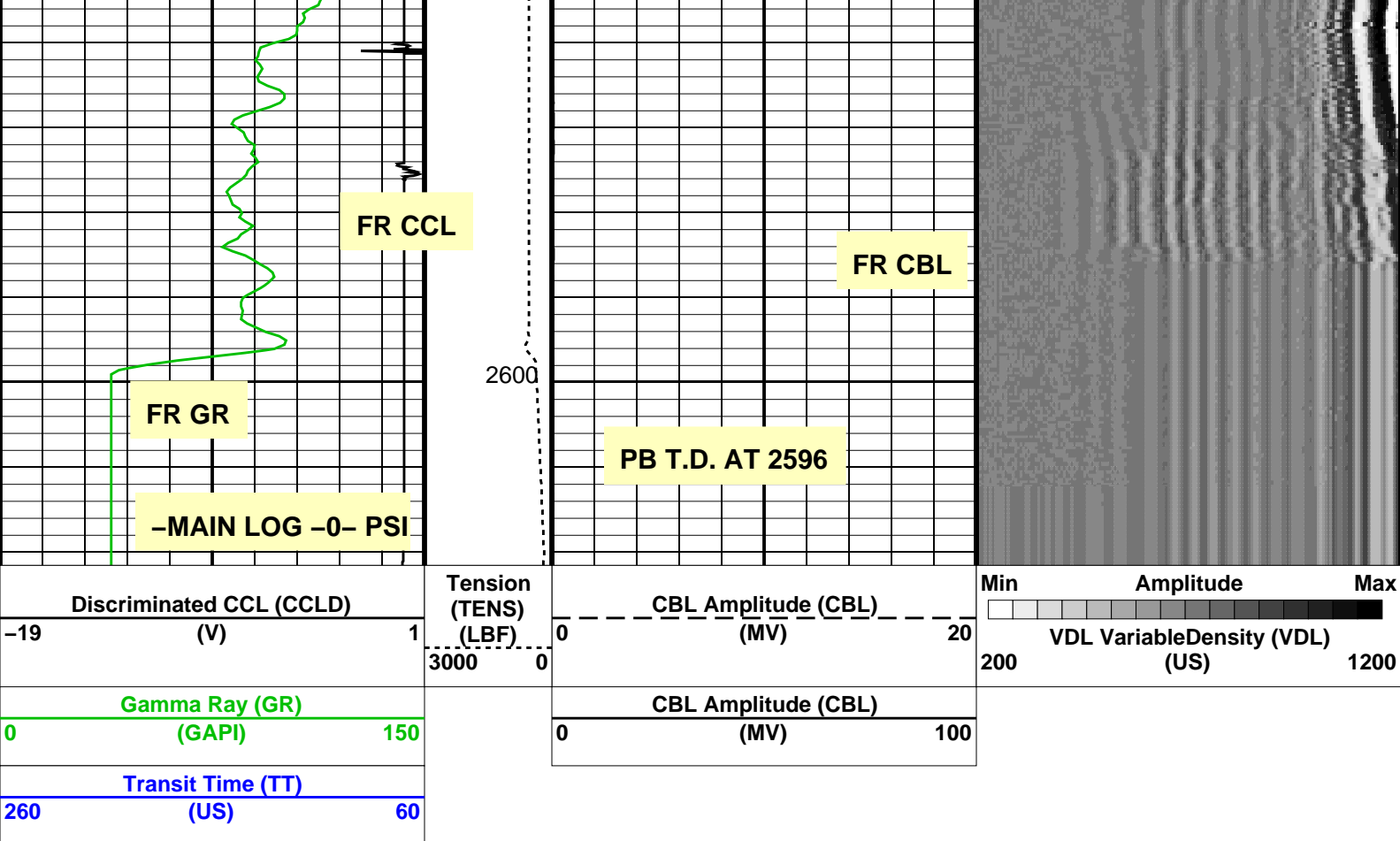
2200

FLAG JOINT 2260'-2280'

2300







Parameters

DLIS Name	Description	Value
SCMT-CB: Slim Cement Mapping Tool, 1-11/16 OD		
BILI	Bond Index Level for Zone Isolation	0.8
BISS	Bond Index Source Selection for BIQL	BI
CB3D	SCMT CBL 3 ft Peak Detection Mode	PEAK
CB3G	SCMT CBL 3 ft Peak Detection T0_Delay and Noise Gate	229.39 US
CB3T	SCMT CBL 3 ft Fixed Threshold Level	20 MV
CB5D	SCMT CBL 5 ft Peak Detection Mode	PEAK
CB5G	SCMT CBL 5 ft Peak Detection T0_Delay and Noise Gate	500 US
CB5T	SCMT CBL 5 ft Fixed Threshold Level	20 MV
CBLG	CBL Gate Width	40 US
CBRA	CBL LQC Reference Amplitude in Free Pipe	79 MV
CMCF	CBL Cement Type Compensation Factor	0.0851843
CMTc	SCMT Slow Channel Multiplexer Mode	SCAN
CMTM	SCMT Operating Mode	LOG
CMTp	SCMT Tool position on CAN	3
CSCS	SCMT Slow Channel Index	VCC
CTHI	Casing Thickness	0.229988 IN
DTF	Delta-T Fluid	205 US/F
FATT	Acoustic Attenuation due to Fluid	0 DB/F
FCF	CBL Fluid Compensation Factor	1
GOBO	Good Bond	0.935163 MV
MAPD	SCMT MAP Peak Detection Mode	PEAK
MAPG	SCMT MAP Peak Detection T0_Delay and Noise Gate	172.39 US
MAPT	SCMT MAP Fixed Threshold Level	30 MV
MATT	Maximum Attenuation	10.6967 DB/F
MCCF	MAP Cement Type Compensation Factor	0.207723
MCI	Minimum Cemented Interval for Isolation	1.25 FT
MMSA	MAP Minimum Sonic Amplitude	2.90558 MV
MSA	Minimum Sonic Amplitude	0.308463 MV
PEDE	Peak Detection On/Off Switch in Playback	OFF
RBC	Relative Bearing Correction Allow/Disallow	ALLOW
VDLG	VDL Manual Gain	5
ZCMT	Acoustic Impedance of Cement	3.22 MRAY
PSPT-A/B: Production Services Logging Platform		
BHS	Borehole Status	CASED
BHT	Bottom Hole Temperature (used in calculations)	120 DEGF
CSID	Casing Size I.D.	4.052 IN
GCSE	Generalized Caliper Selection	BS
GDEV	Average Angular Deviation of Borehole from Normal	0 DEG
GGRD	Geothermal Gradient	0.01 DF/F
GRSE	Generalized Mud Resistivity Selection	CHART GEN 9

CRSE	Generalized Mud Resistivity Selection	CHARACTER	
GTSE	Generalized Temperature Selection	LINEAR_ESTIMATE	
ISSBAR	Barite Mud Switch	NOBARITE	
MATR	Rock Matrix for Neutron Porosity Corrections	LIMESTONE	
PBPO	PBMS Tool position on CAN	2	
PCCG	PBMS CCL Gain	DB24	
PSTP	PSTC Tool Position on CAN Bus	1	
SHT	Surface Hole Temperature	68	DEGF
System and Miscellaneous			
ALTDPCCHAN	Name of alternate depth channel	SpeedCorrectedDepth	
BS	Bit Size	6.250	IN
BSAL	Borehole Salinity	-50000.00	PPM
CSIZ	Current Casing Size	4.500	IN
CWEI	Casing Weight	10.50	LB/F
DFD	Drilling Fluid Density	-50000.00	LB/G
DO	Depth Offset for Playback	2.0	FT
FLEV	Fluid Level	0.00	FT
MST	Mud Sample Temperature	-50000.00	DEGF
PBVSADP	Use alternate depth channel for playback	NO	
PP	Playback Processing	NORMAL	
RMFS	Resistivity of Mud Filtrate Sample	-50000.0000	OHMM
RW	Resistivity of Connate Water	0.0000	OHMM
TD	Total Depth	-50000	FT
TDD	Total Depth - Driller	2640.00	FT
TDL	Total Depth - Logger	2596.00	FT
TWS	Temperature of Connate Water Sample	0.00	DEGF
Format: CBL_VDL Vertical Scale: 5" per 100' Graphics File Created: 30-May-2008 07:56			

OP System Version: 15C0-309

MCM

SCMT-CB

SRPC-3525-DEC_2007_OP15

PSPT-A/B

SRPC-3525-DEC_2007_OP15

Input DLIS Files

DEFAULT

SCMT_PSP_003LUP

FN:2

PRODUCER

30-May-2008 07:34

2619.5 FT

1206.0 FT

Output DLIS Files

DEFAULT

SCMT_PSP_004PUP

FN:3

PRODUCER

30-May-2008 07:56

Company:

ROSETTA RESOURCES OPERATING, LP

Schlumberger

Well:

WELP 10-16

Field:

WILDCAT

County:

YUMA

State:

COLORADO

CEMENT BOND

GAMMA RAY CCL LOG