

HALLIBURTON

01370562

Cement Bond
Gamma Ray CCL

123-26482

Company Noble Energy Production Inc
Well Schank J 35-22
Field Wattenberg
County Weld State Colorado

Company Noble Energy Production Inc
Well Schank J 35-22
Field Wattenberg
County Weld State Colorado
API No: 05-123-26482-00
Location: 2560' FNL & 1397' FEL
SE NE
Serv #: 5603916
Other Services

RECEIVED
DEC 7 7 2008
COGCC

Sec: 35 Twp: 5N Rge: 66W

GL Elevation 4664

Log Measured From KB 14 Ft. above perm. datum

Drilling Measured From KB

Date @ Time Logged Jan 15th 2008

Run No. One

Depth - Driller 7763

Depth - Logger 7720

Bottom - Logged Interval 7720

Top - Log Interval 1600

Max. Recorded Temp. 245

CEMENTING DATA Surface Protection String

Date / Time Cemented

Primary / Squeeze

Expected Compressive Strength psi@ hrs

Cement Volume

Cement Type / Weight

Mud Type / Mud Wgt.

Run Number Bit From To Size Weight From To

Borehole Record

Casing & Tubing Record

TD Surface

KB 4678

D F 4677

GL 4664

Elevation

Fresh Water

Surface

See Log

Brighton

Scott Van Vuuren

Witnessed by

Scott Armstrong

Production

Liner

String

String

String

String

String

Comments

Depth ref to PSI log dated Jan 7 2008

Crew: Van Vuuren, Townsend, McCoy

Thank you for Using Halliburton

HALLIBURTON DOES NOT GUARANTEE THE ACCURACY OF ANY INTERPRETATION OF THE LOG DATA, CONVERSION OF LOG DATA TO PHYSICAL ROCK PARAMETERS OR RECOMMENDATIONS WHICH MAY BE GIVEN BY HALLIBURTON PERSONNEL OR WHICH APPEAR ON THE LOG OR IN ANY OTHER FORM. ANY USER OF SUCH DATA, INTERPRETATIONS, CONVERSIONS, OR RECOMMENDATIONS AGREES THAT HALLIBURTON IS NOT RESPONSIBLE EXCEPT WHERE DUE TO GROSS NEGLIGENCE OR WILLFUL MISCONDUCT, FOR ANY LOSS, DAMAGES, OR EXPENSES RESULTING FROM THE USE THEREOF.

HALLIBURTON

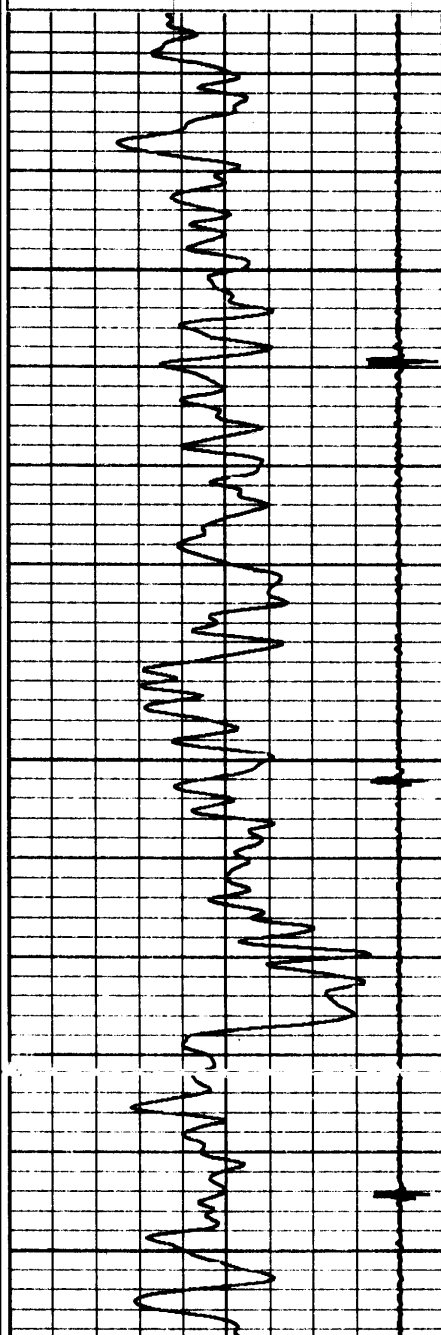
Sussex Log

5"=100'

Database File: noble schank j 35-22.db
Dataset Pathname: pass2
Presentation Format: cbldig
Dataset Creation: Tue Jan 15 14:10:36 2008 by Log Halliburton Casedho
Charted by: Depth in Feet scaled 1:240

9	Collar Locator	-1
30	GR (GAPI)	130

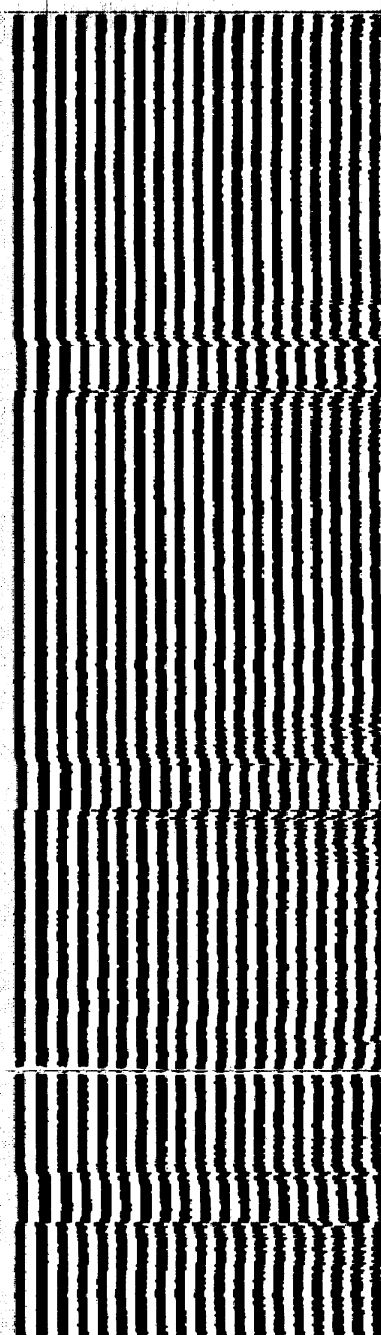
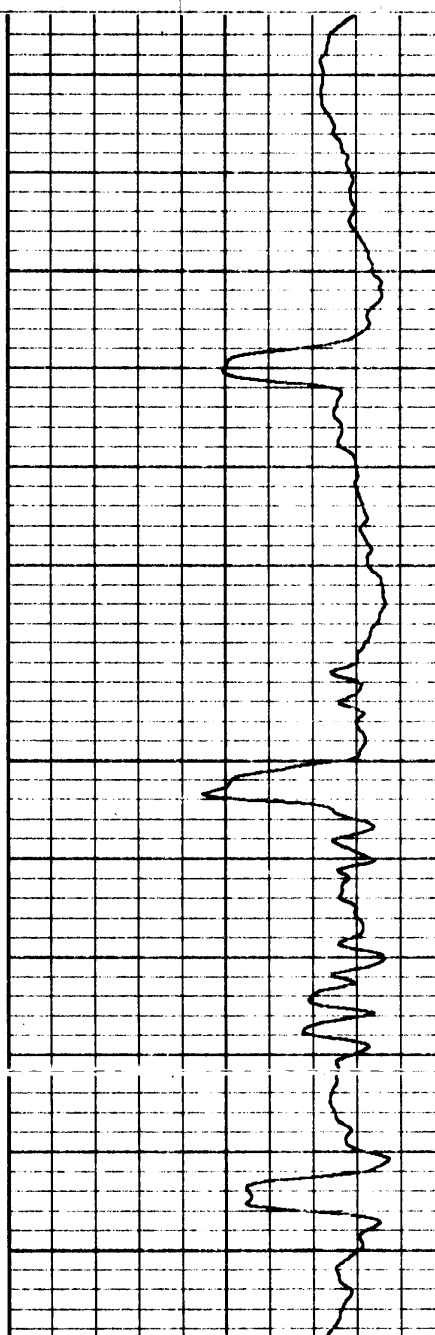
0	Amplitude (mV)	100	200	Variable Density	1200
0	Amplified Amplitude (mV)	10			

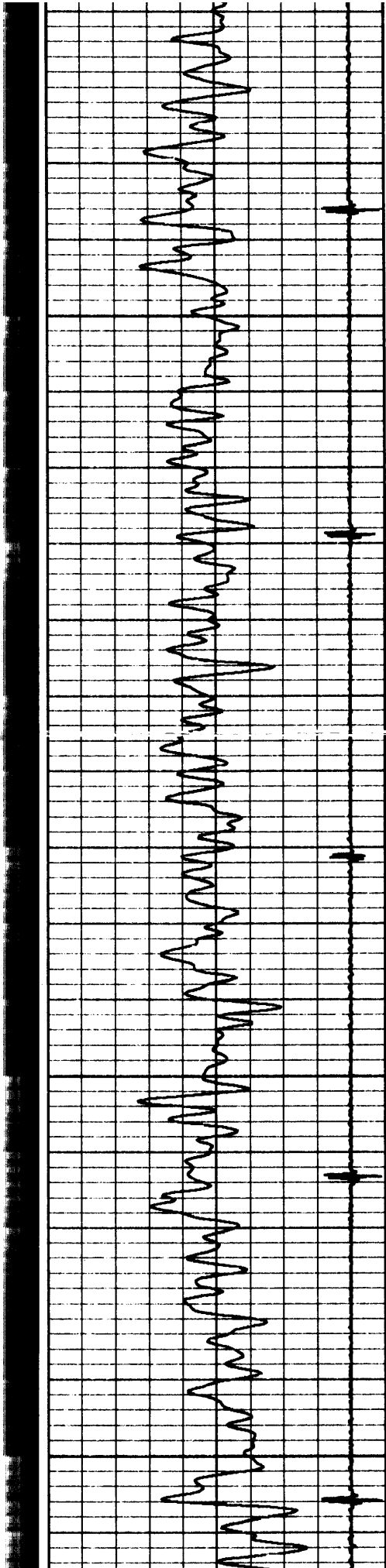


1600

1650

1700



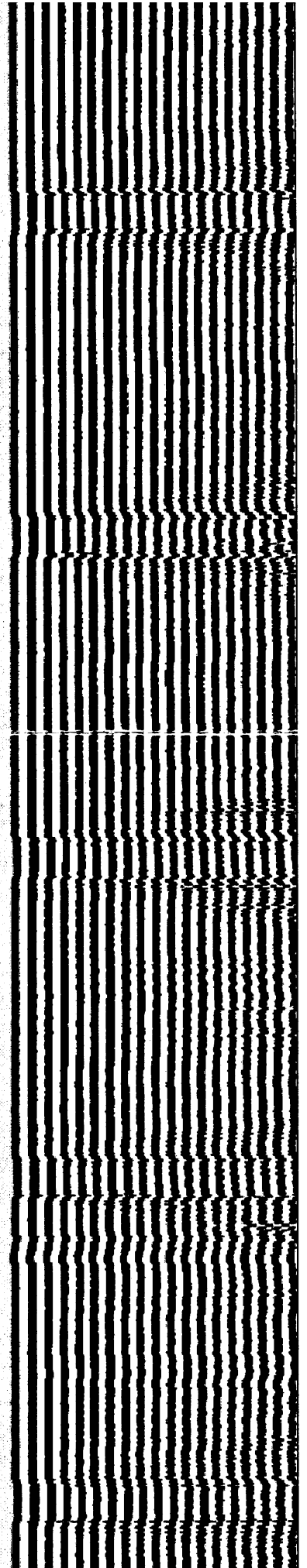
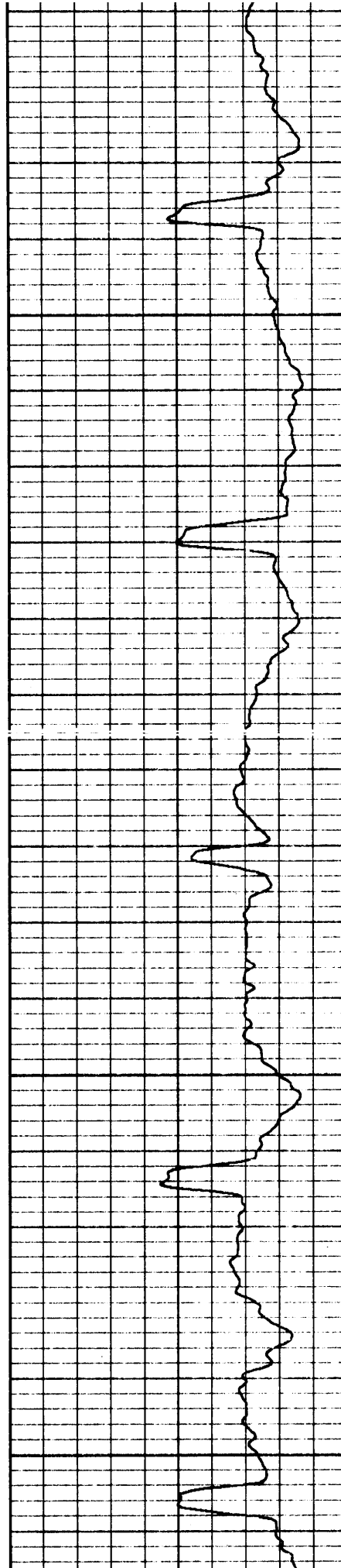


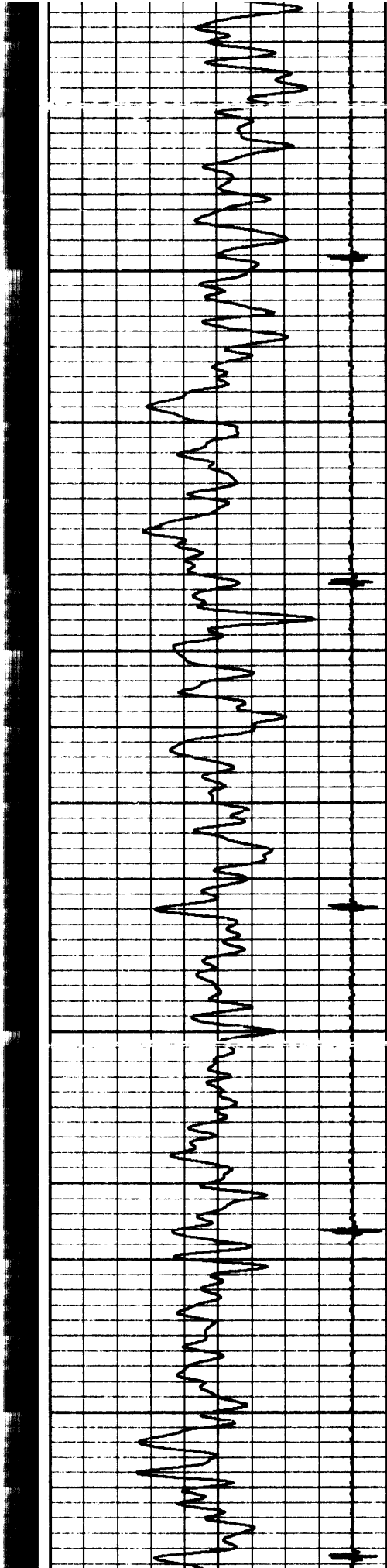
1750

1800

1850

1900



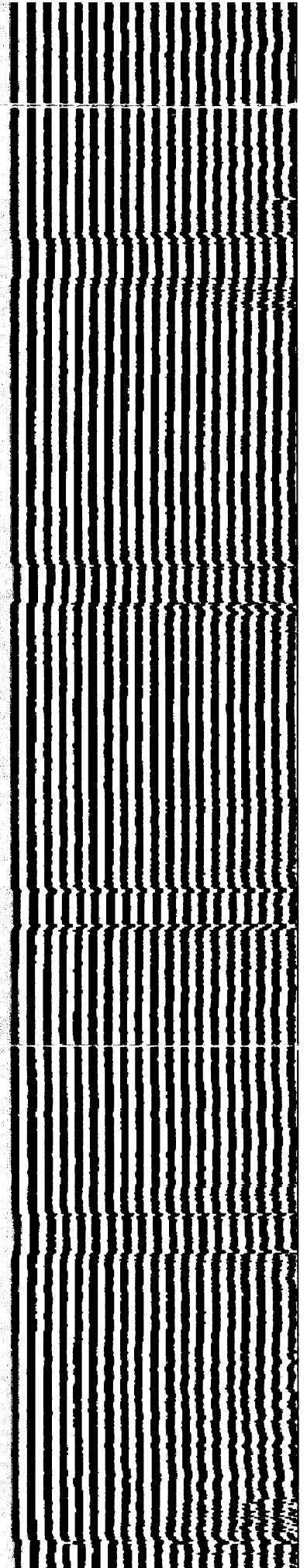
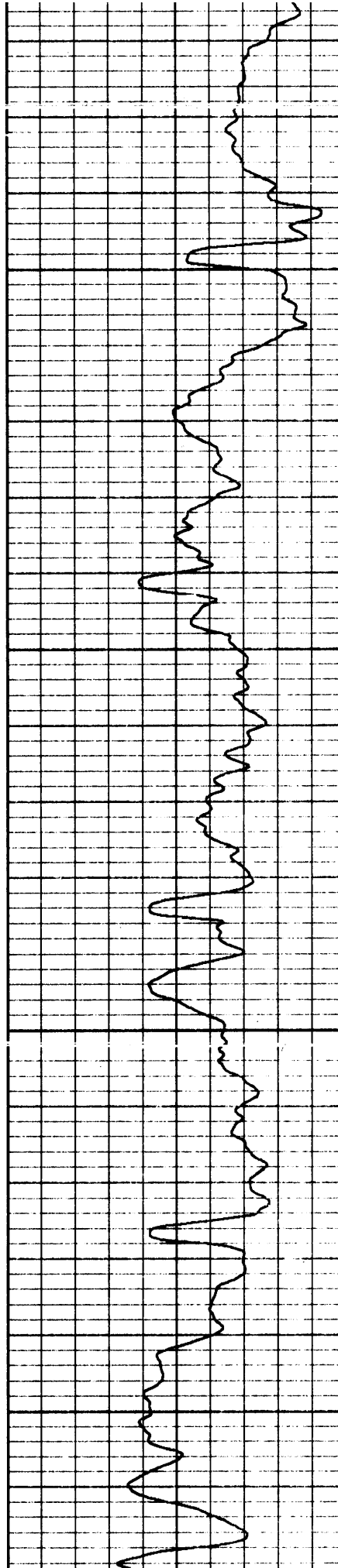


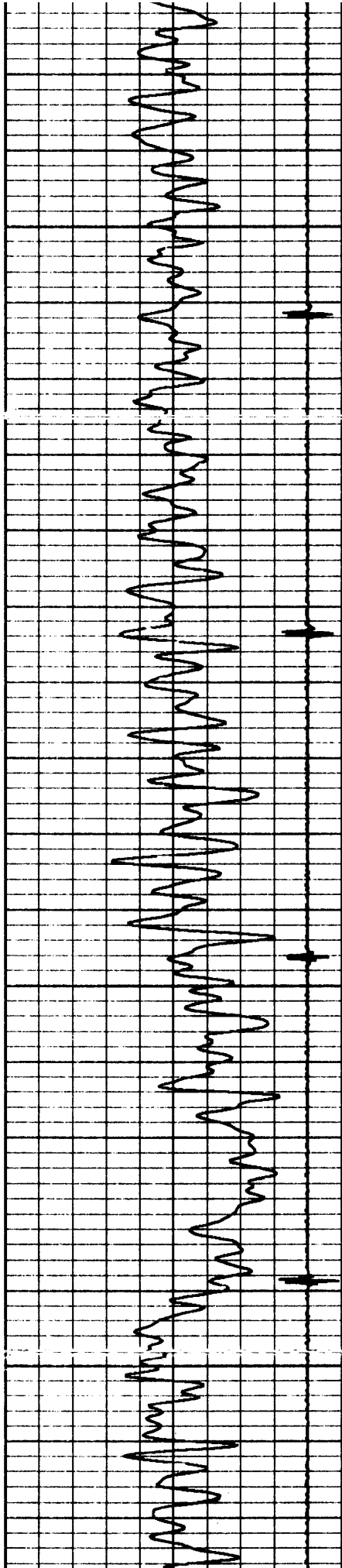
1950

2000

2050

2100



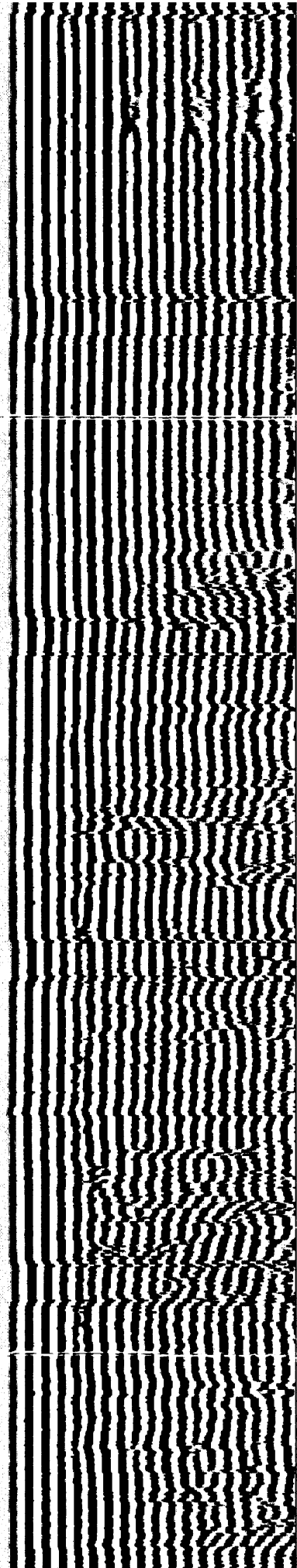
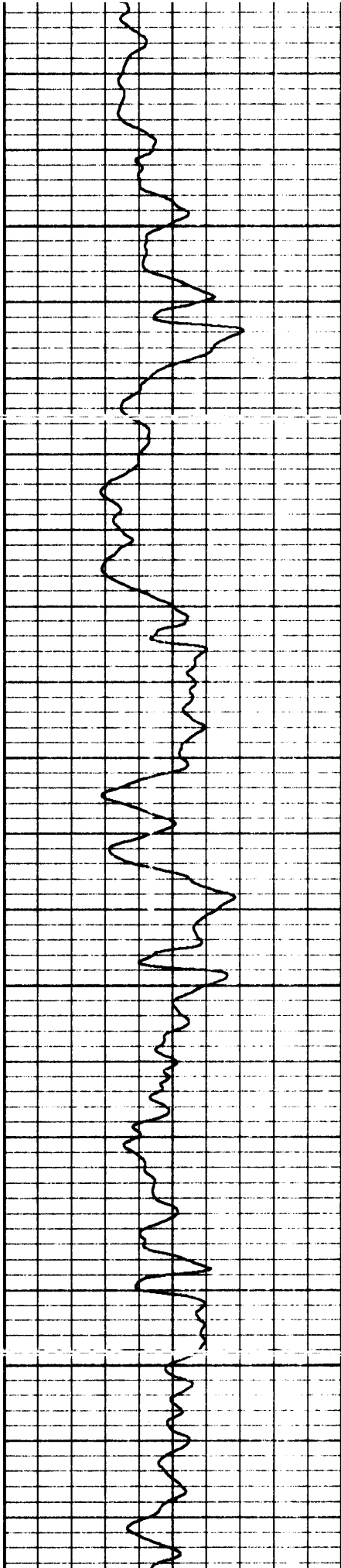


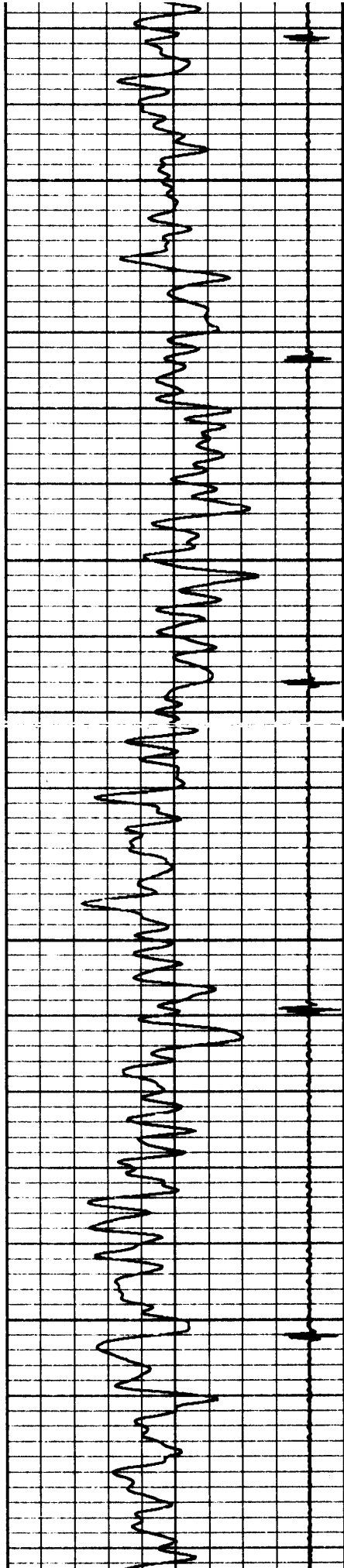
2150

2200

2250

2300



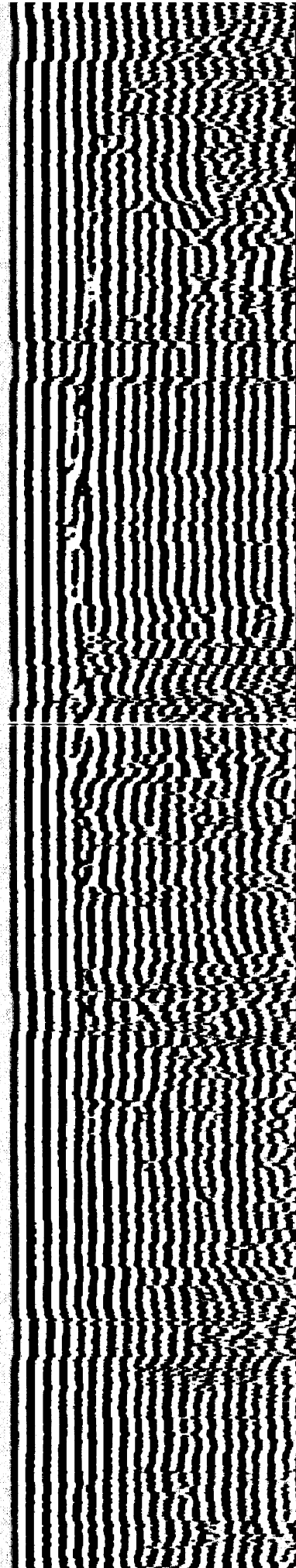
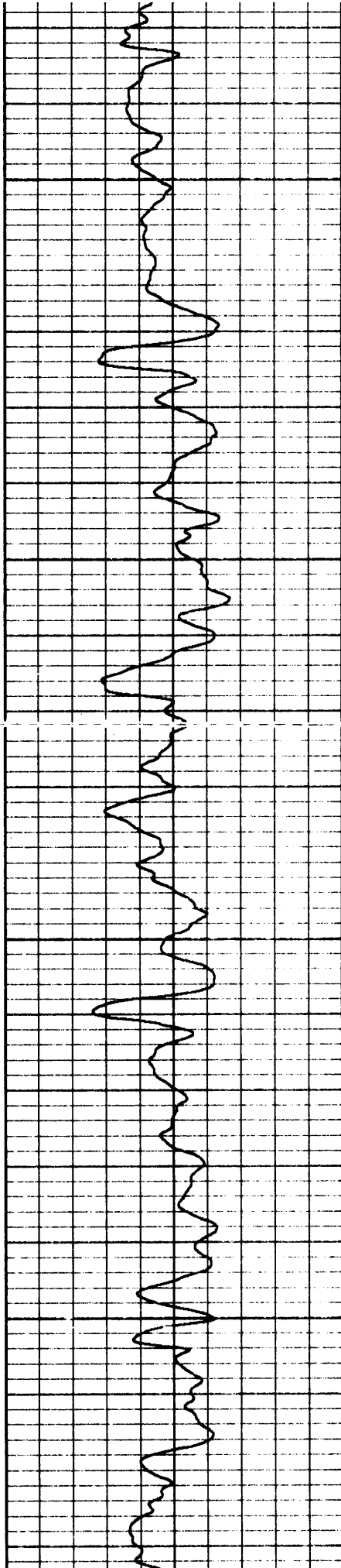


2350

2400

2450

2500

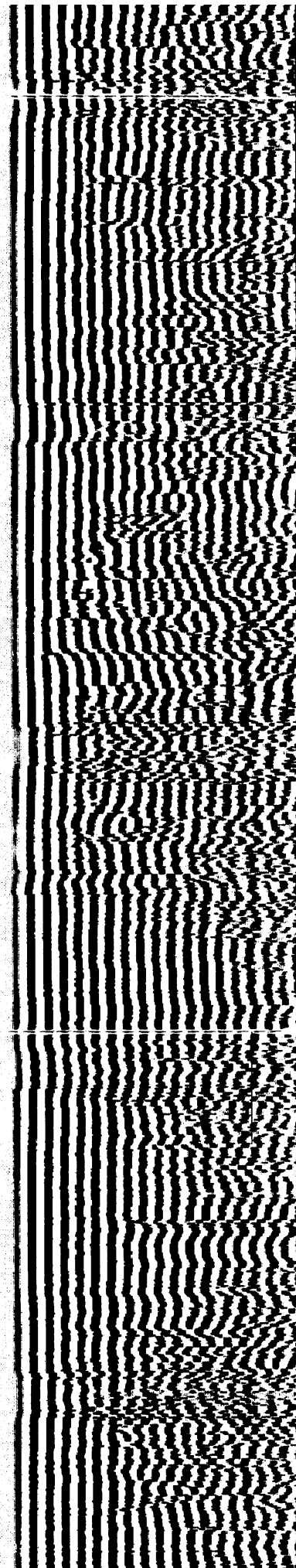
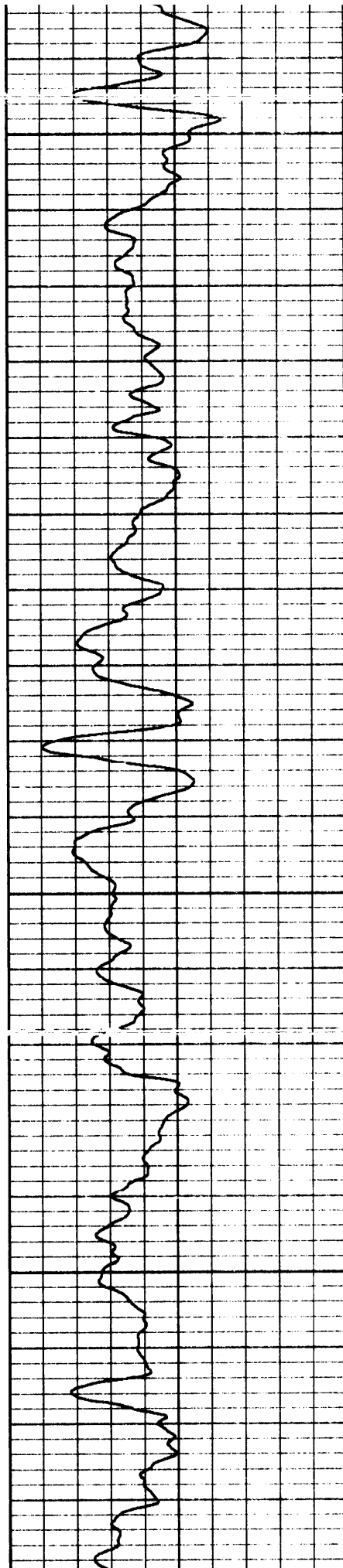
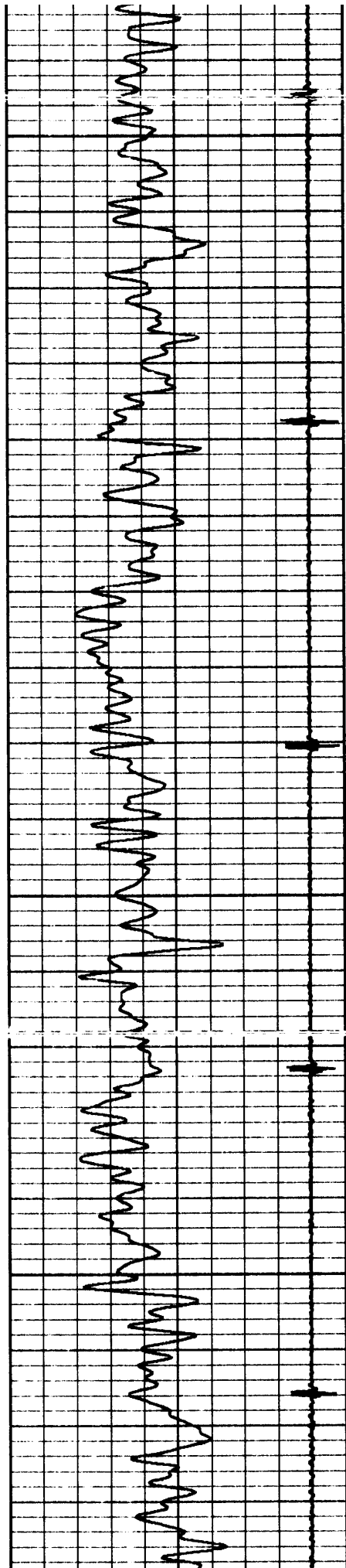


2550

2600

2650

2700

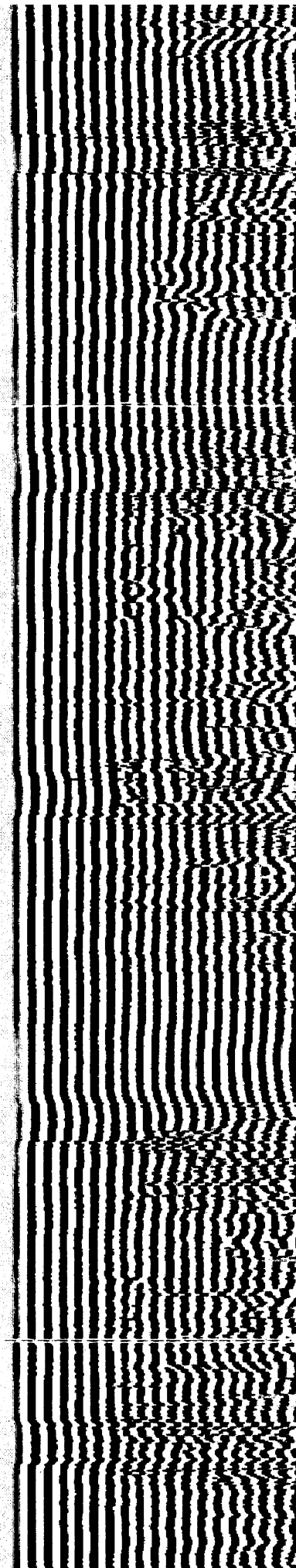
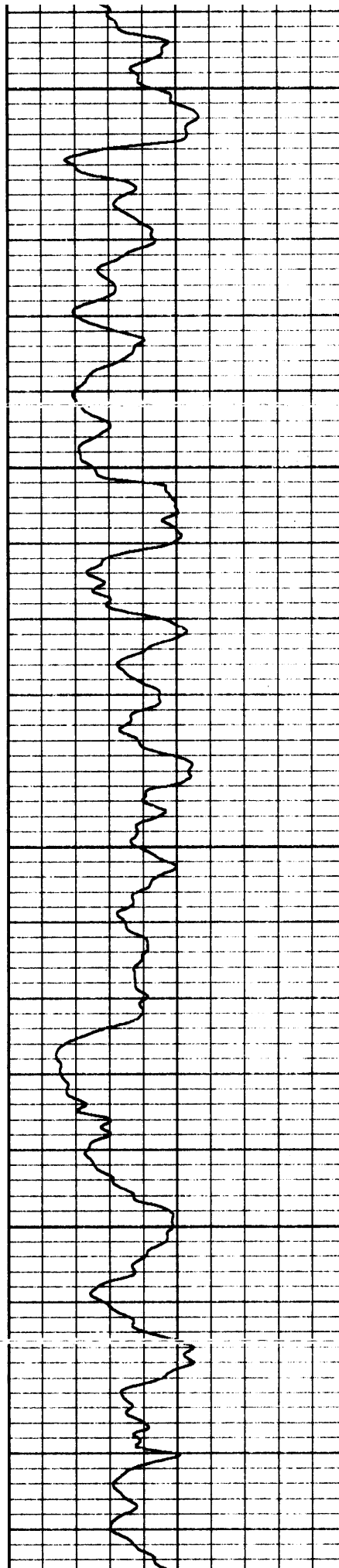
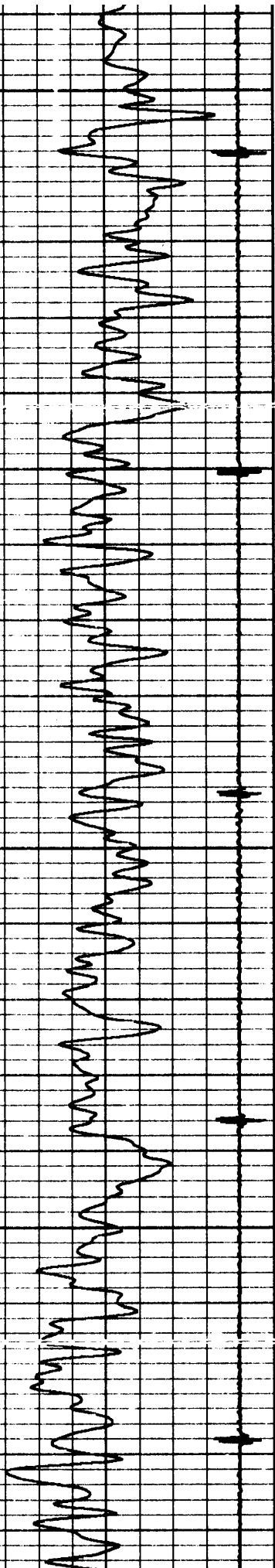


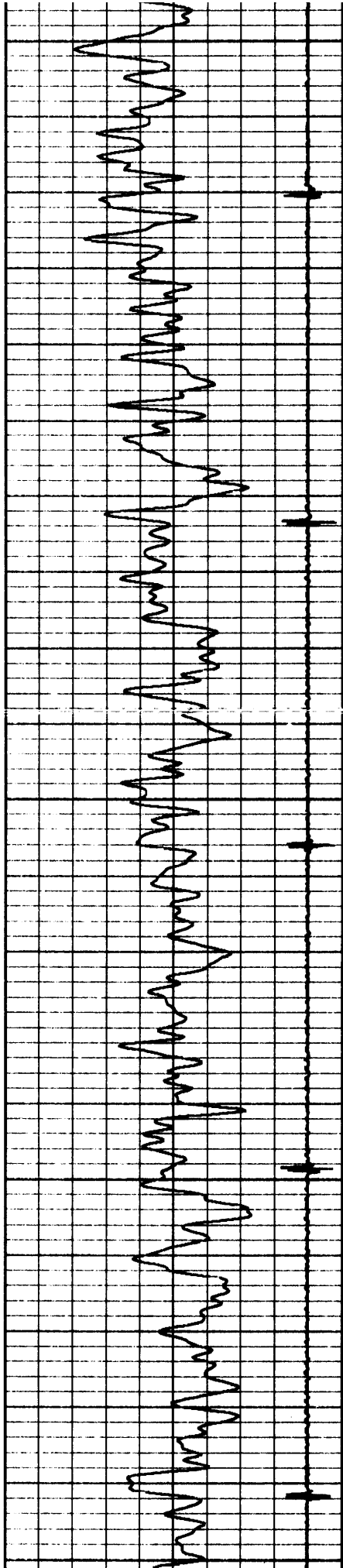
2750

2800

2850

2900





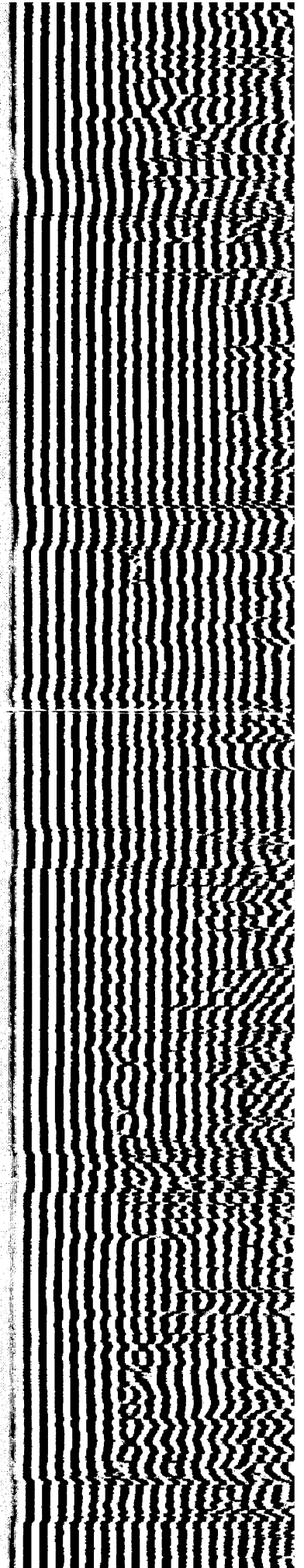
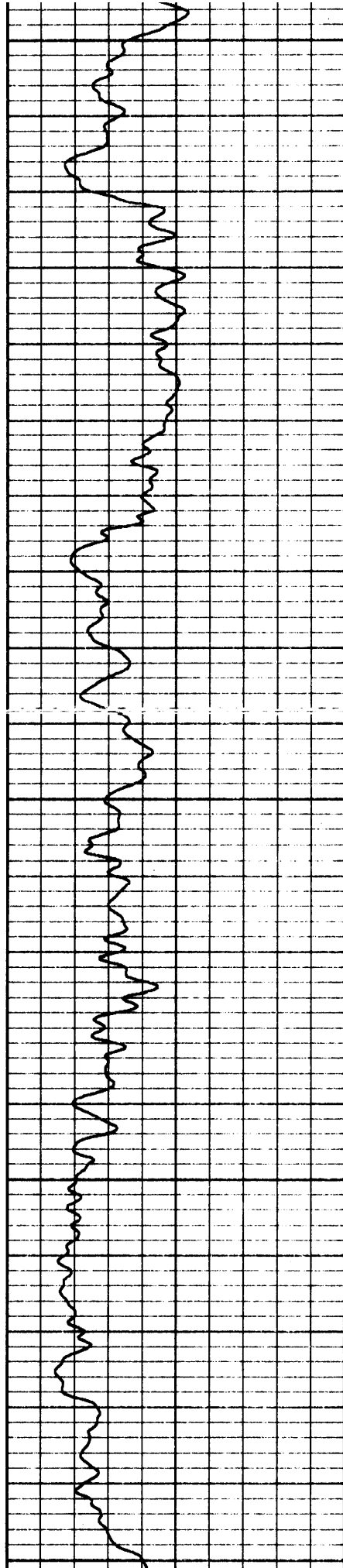
2950

3000

3050

3100

3150

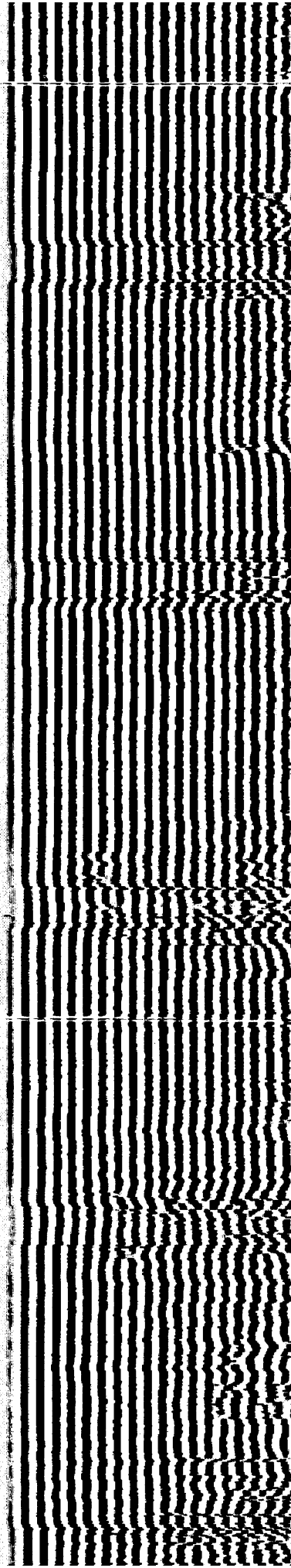


3200

3250

3300

3350

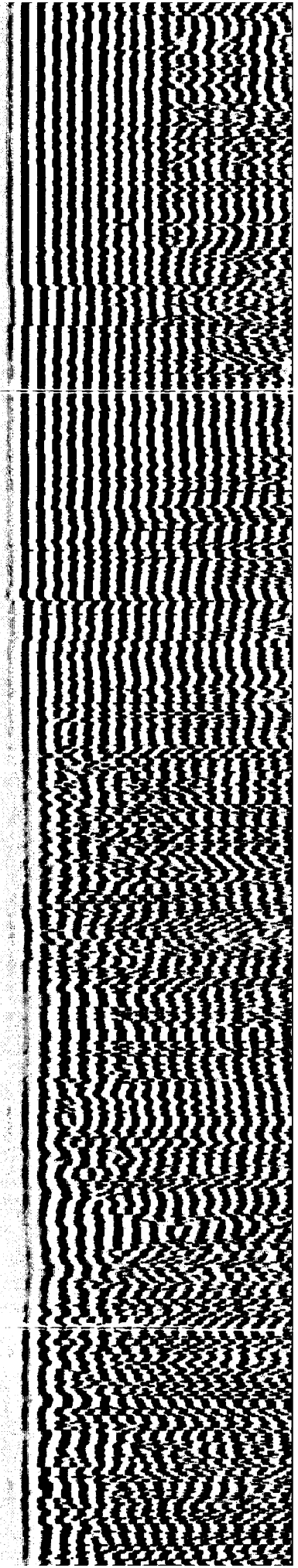
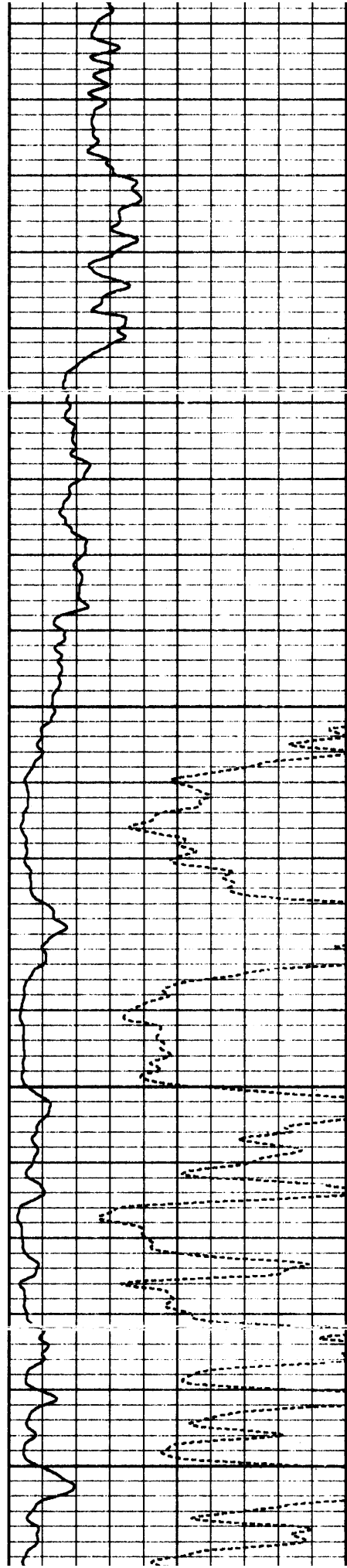
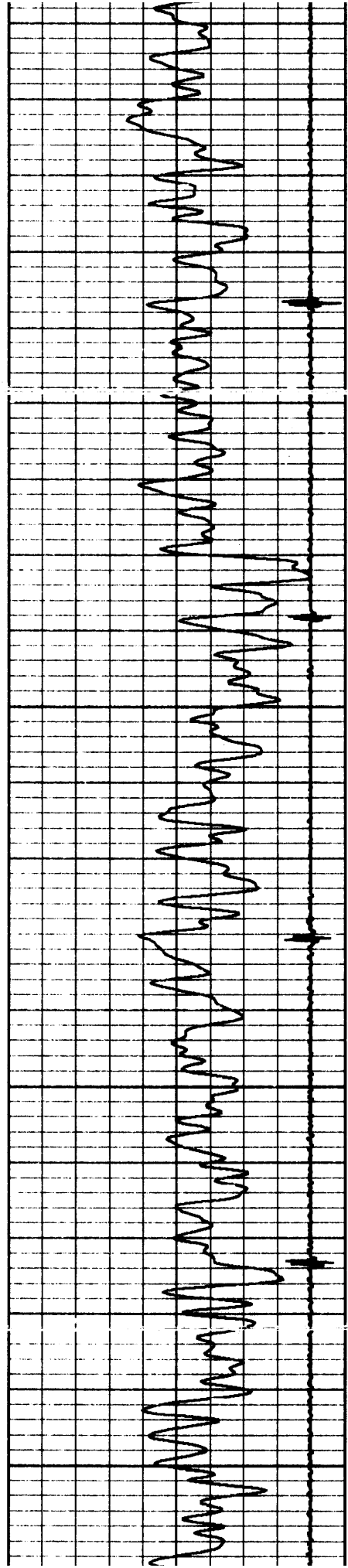


3400

3450

3500

3550

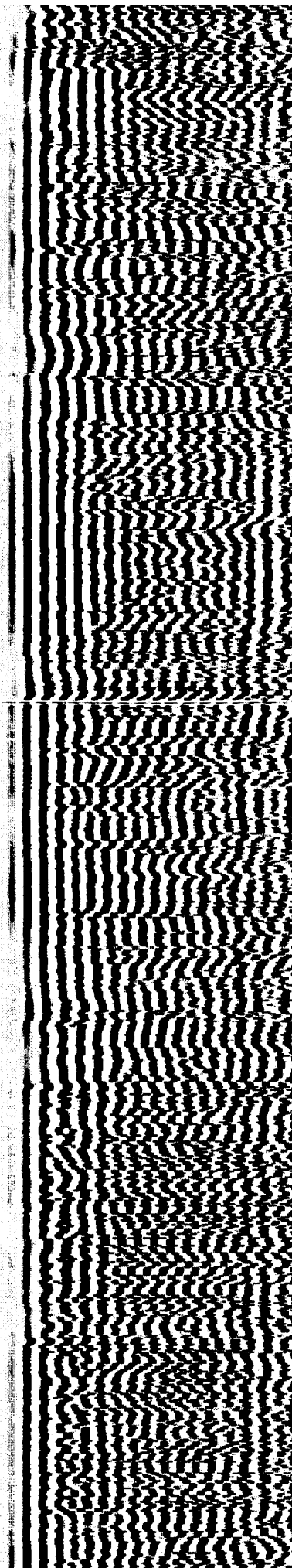
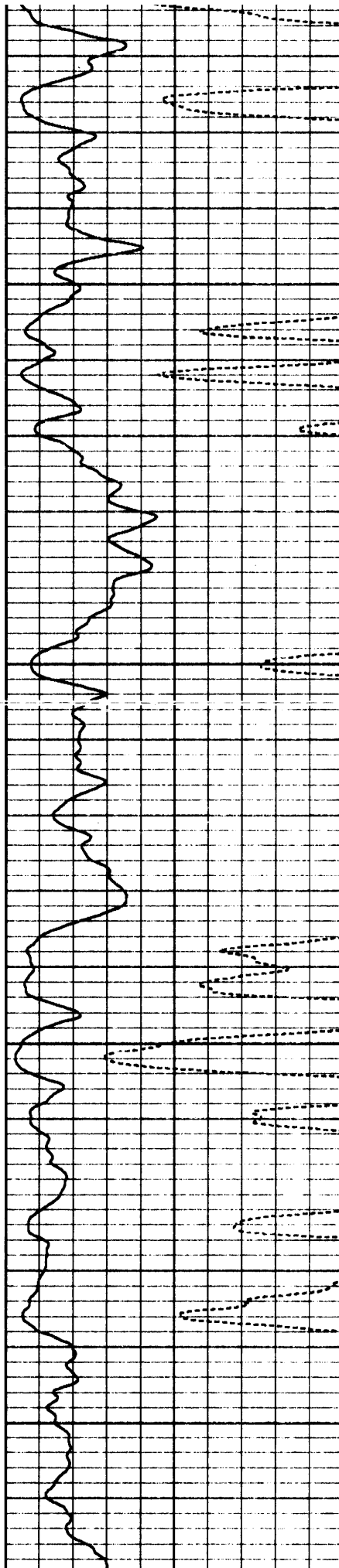
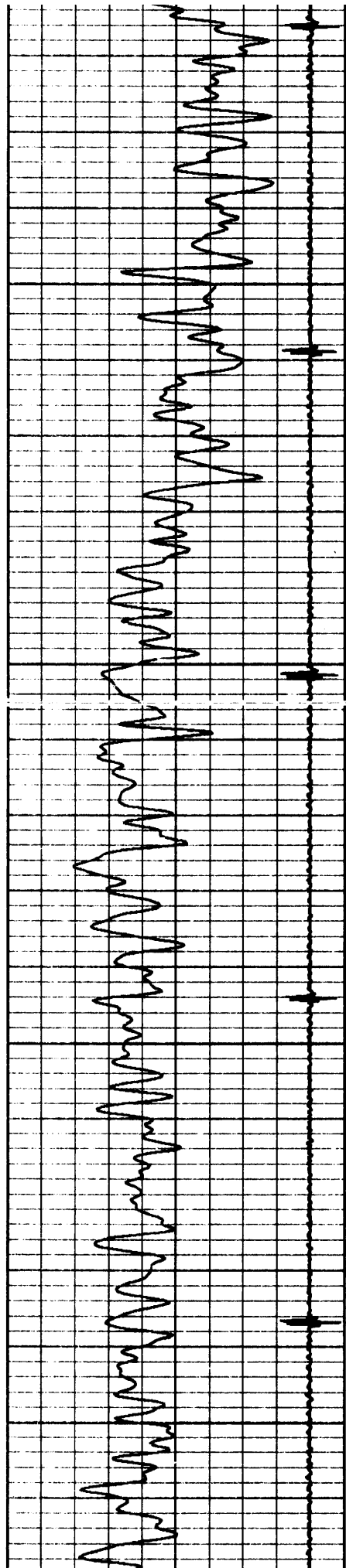


3600

3650

3700

3750

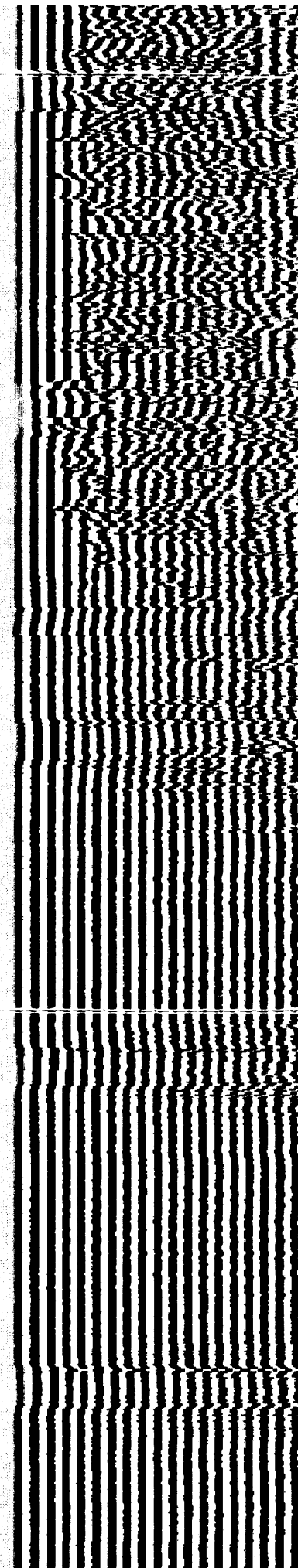
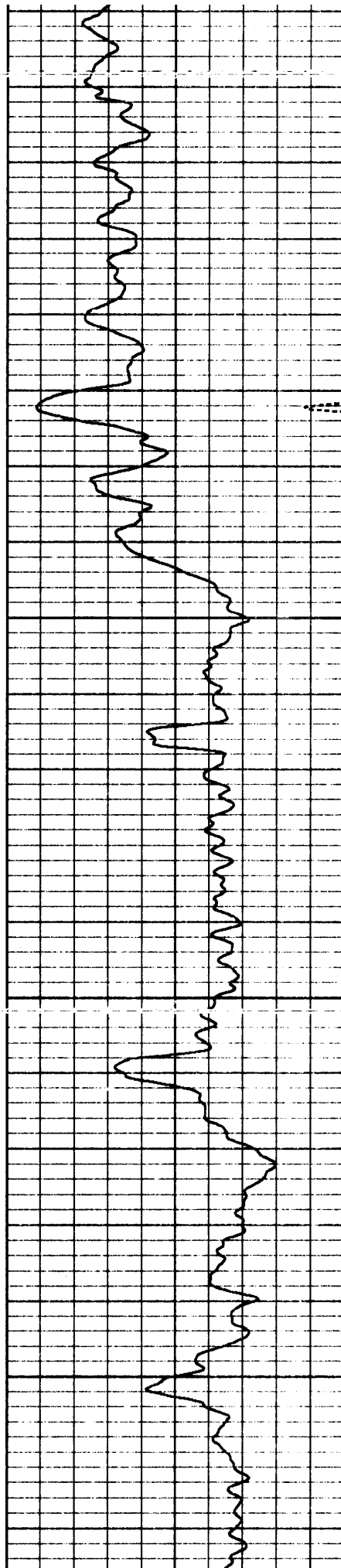
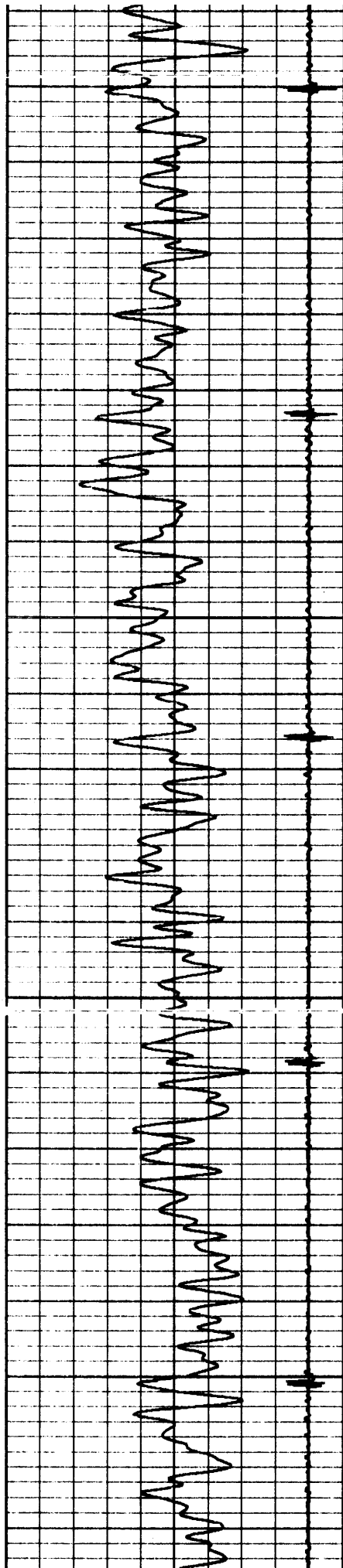


3800

3850

3900

3950

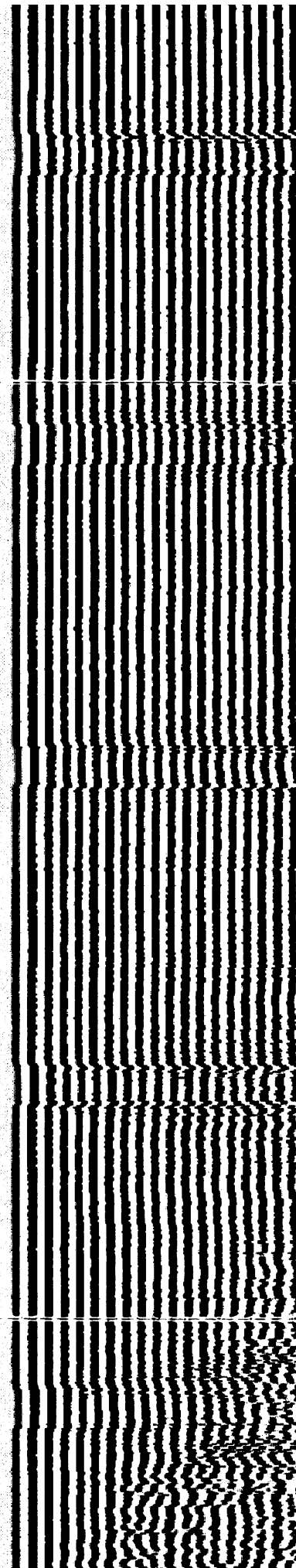
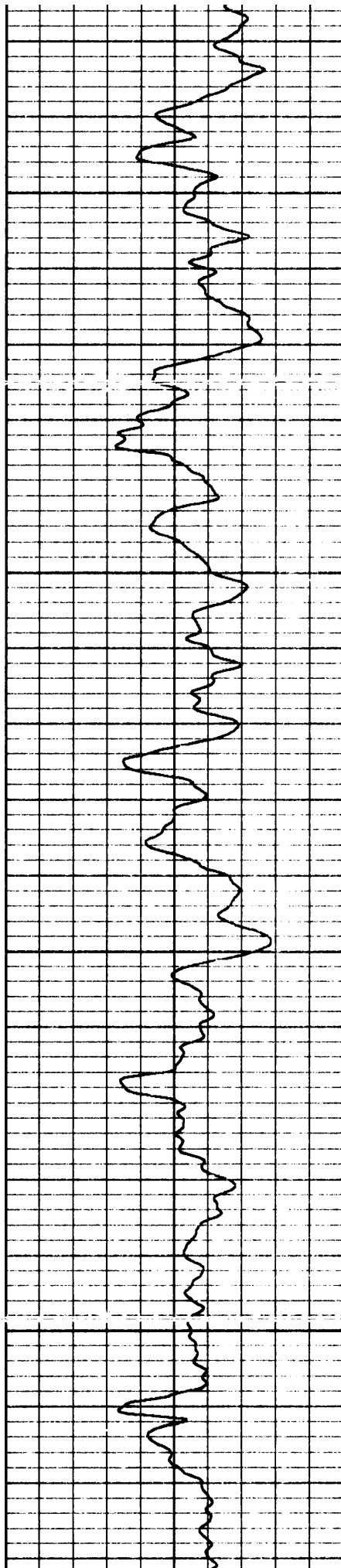
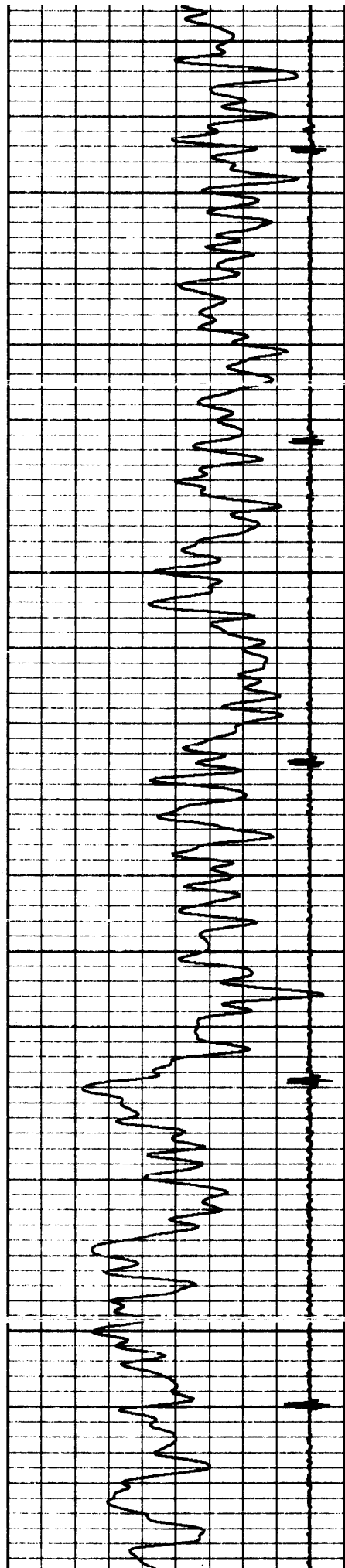


4000

4050

4100

4150

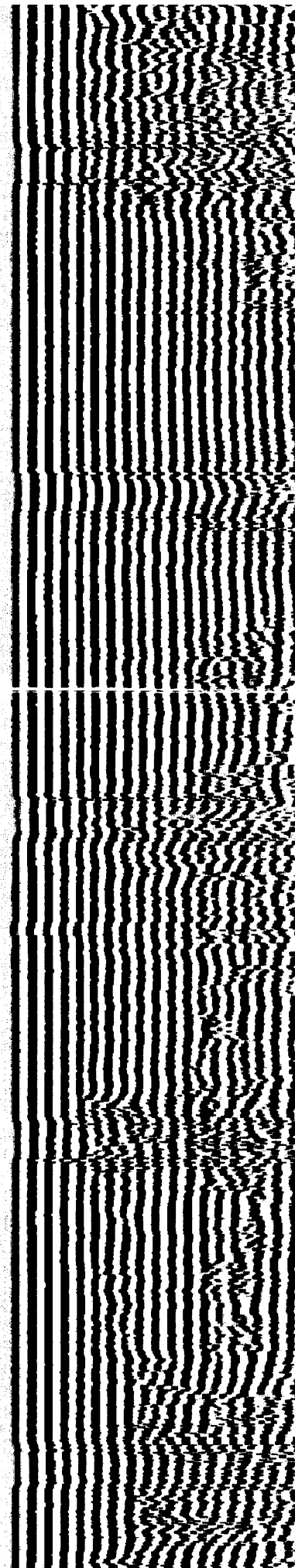
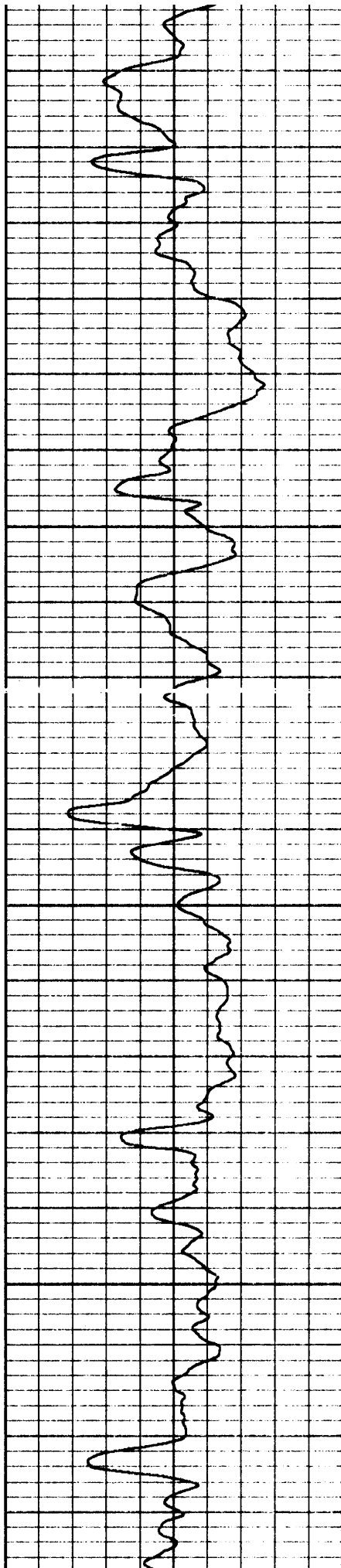
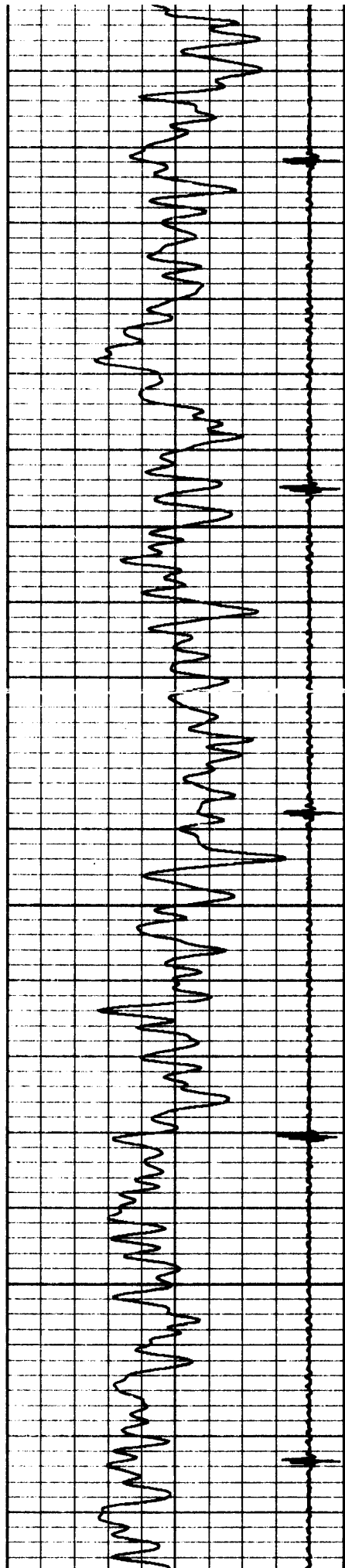


4200

4250

4300

4350

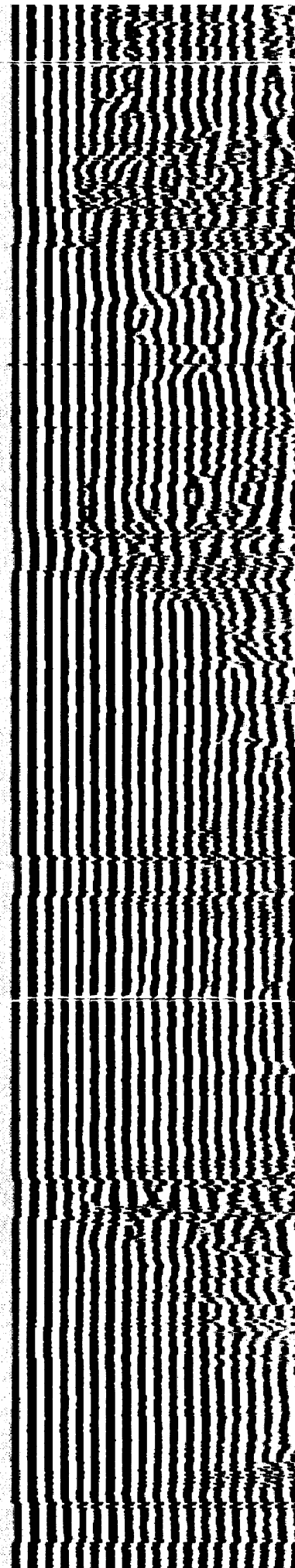
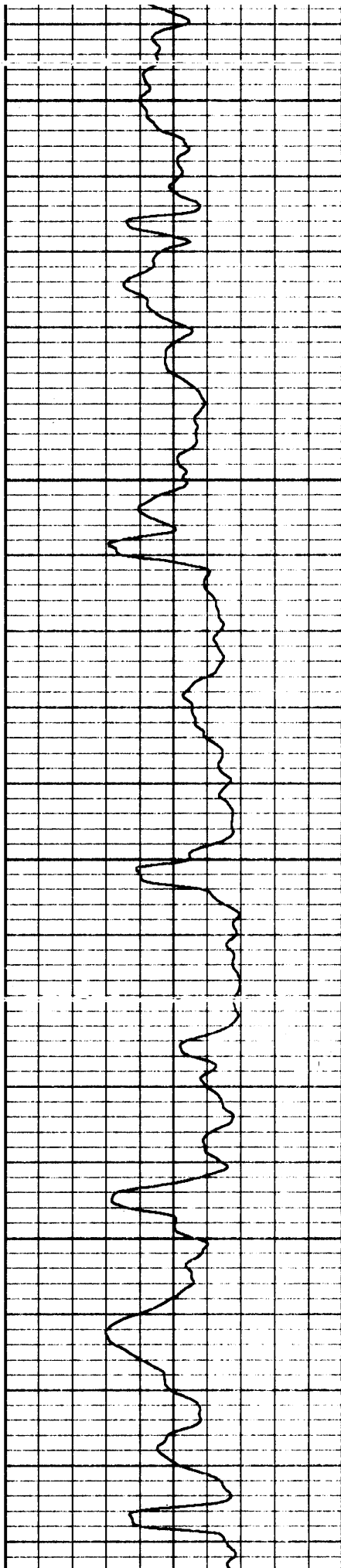
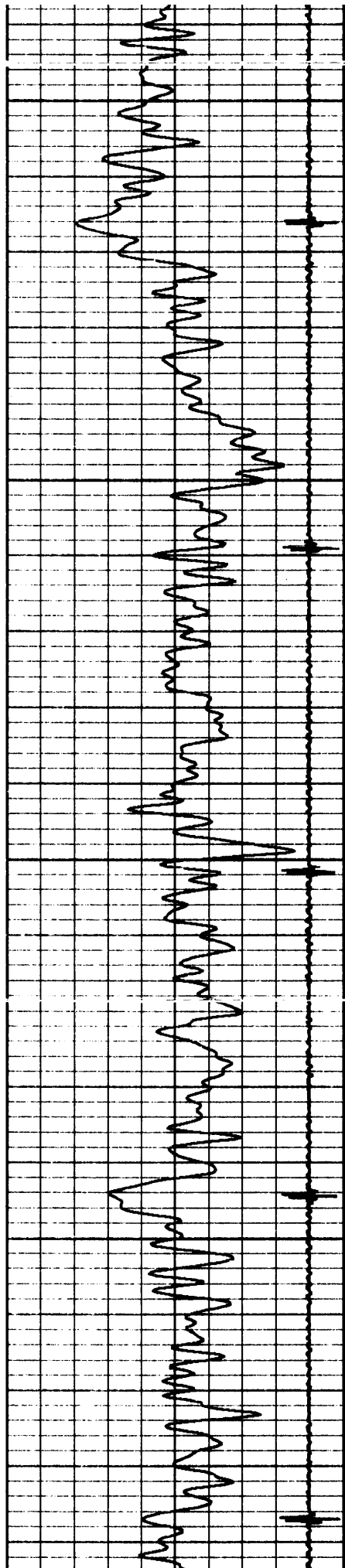


4400

4450

4500

4550



4600

4650

4700

4750

4800

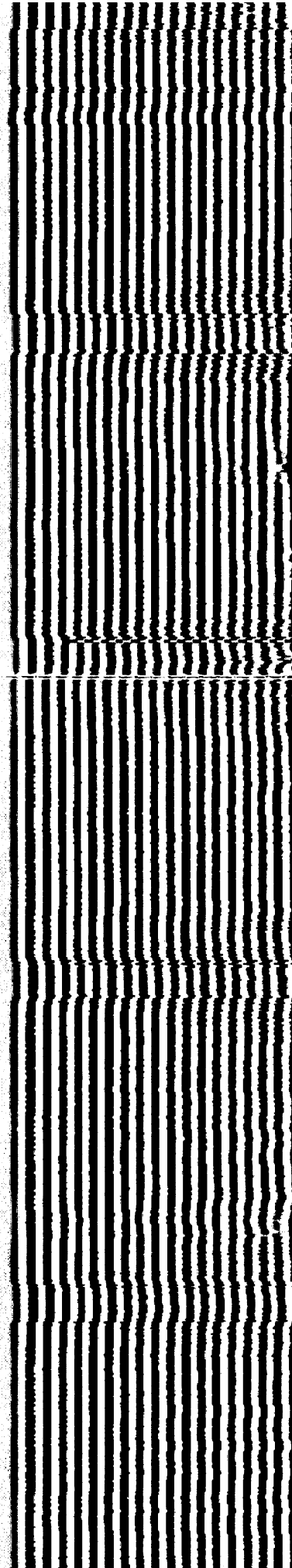
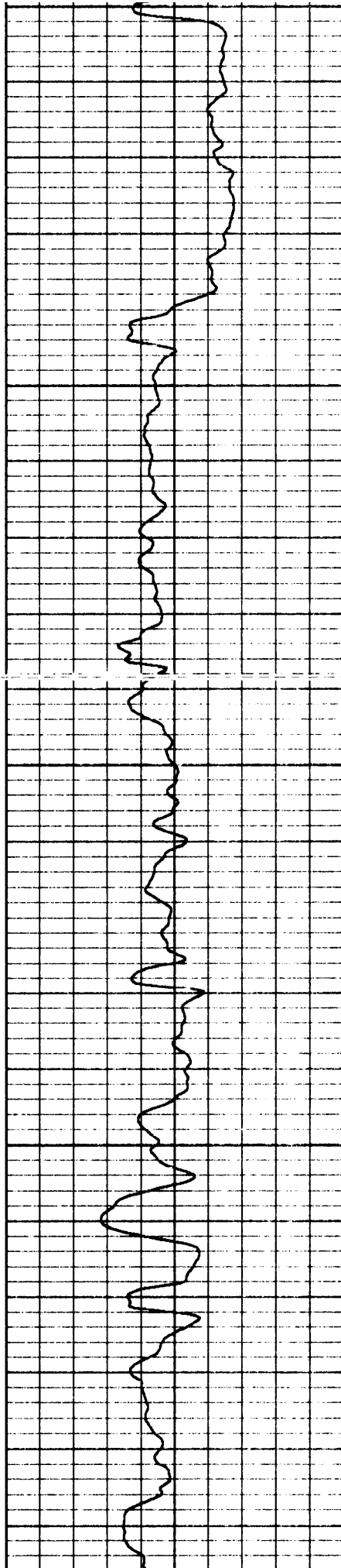
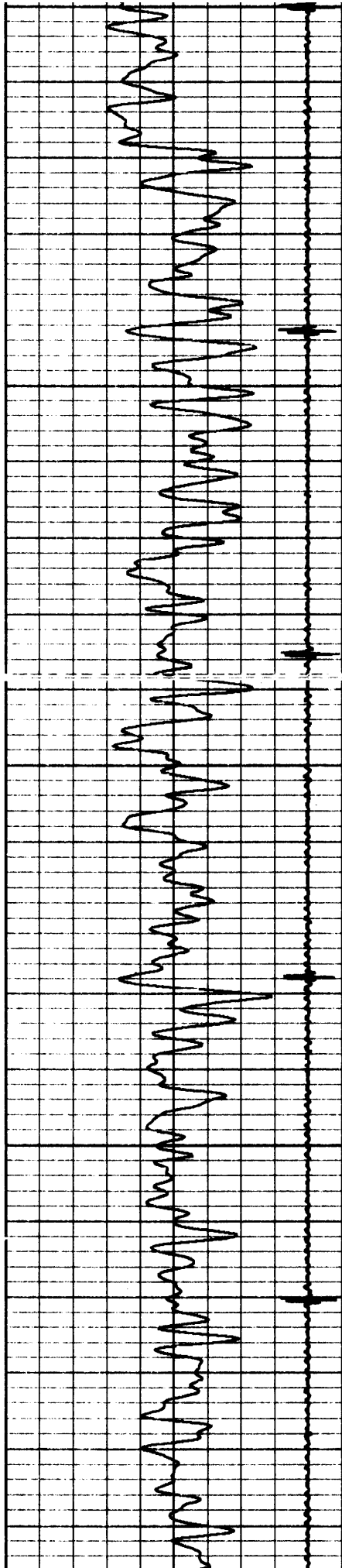
4800

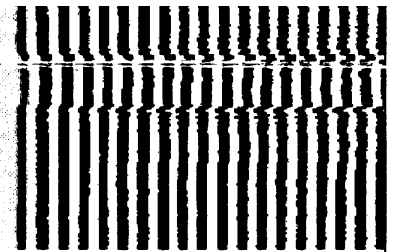
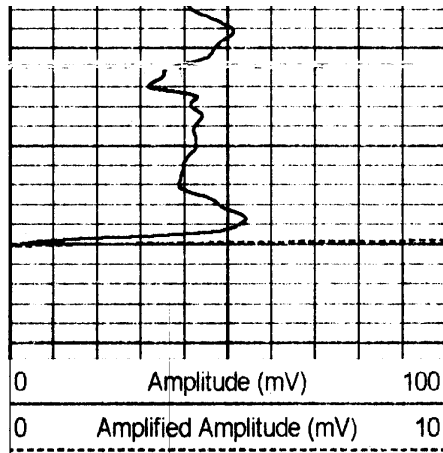
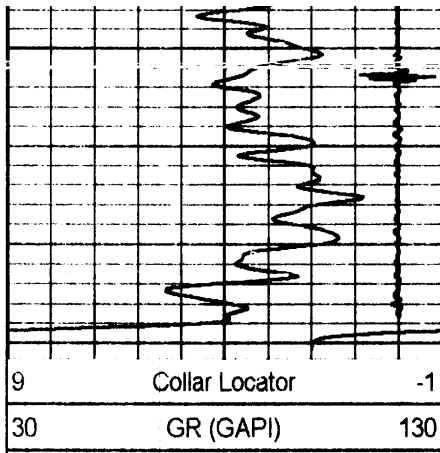
4850

4900

4950

5000





Variable Density

1200

HALLIBURTON

Sussex Log

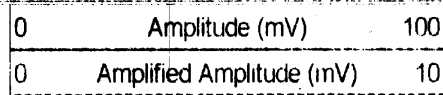
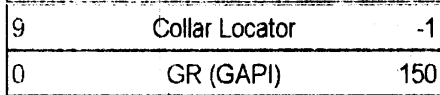
5"=100'

HALLIBURTON

Main Log

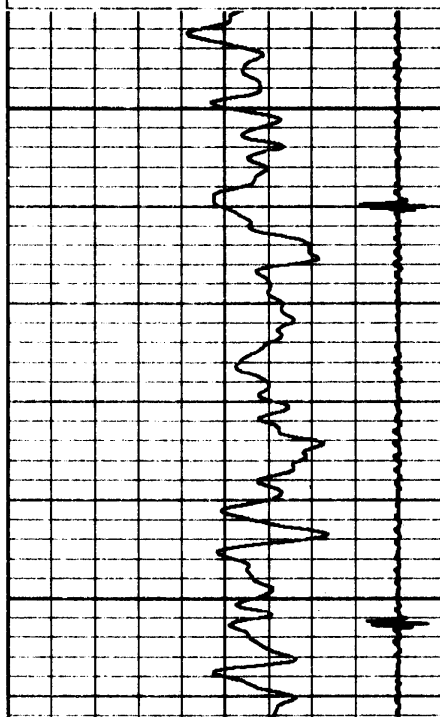
5"=100'

Database File: noble schank j 35-22.db
 Dataset Pathname: pass1
 Presentation Format: cblidig
 Dataset Creation: Tue Jan 15 13:38:38 2008 by Log Halliburton Casedho
 Charted by: Depth in Feet scaled 1:240



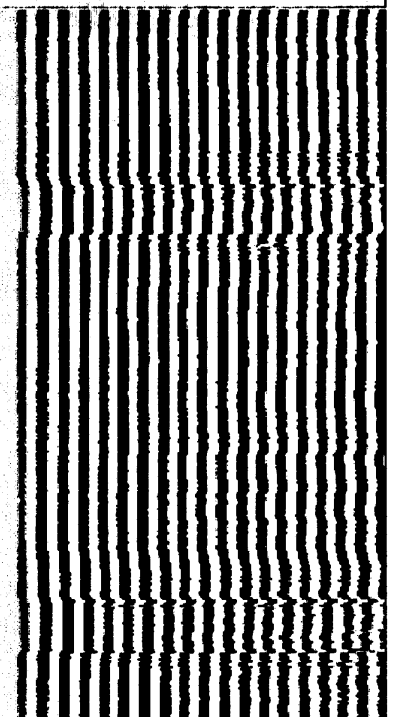
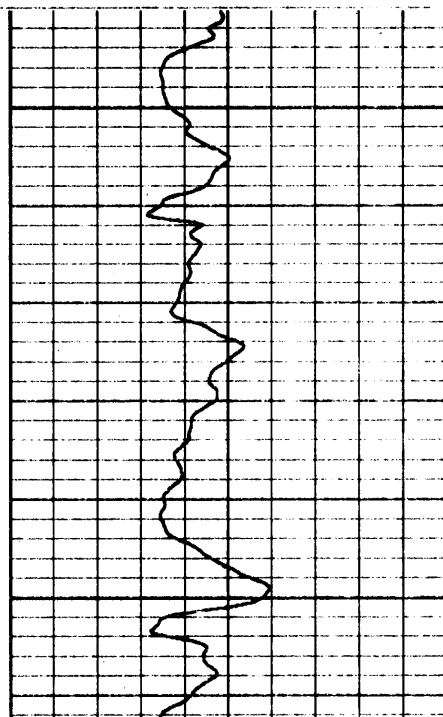
Variable Density

1200



5000

5050

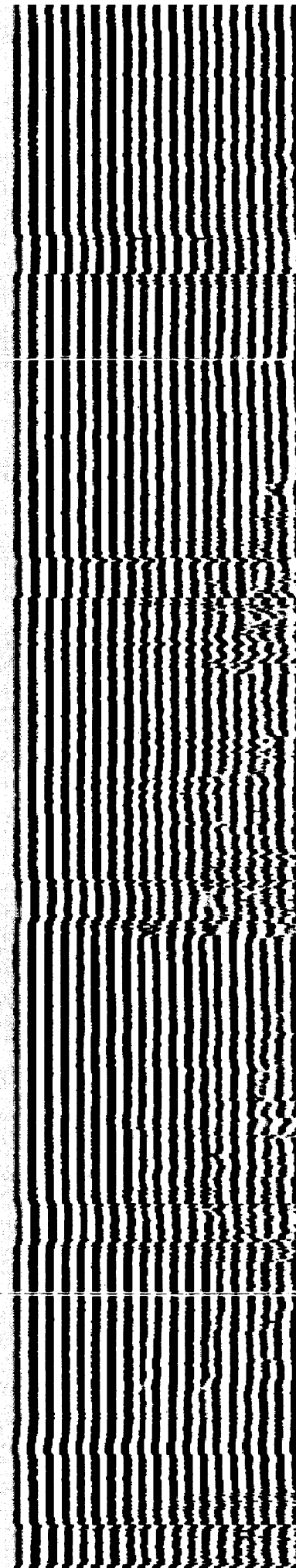
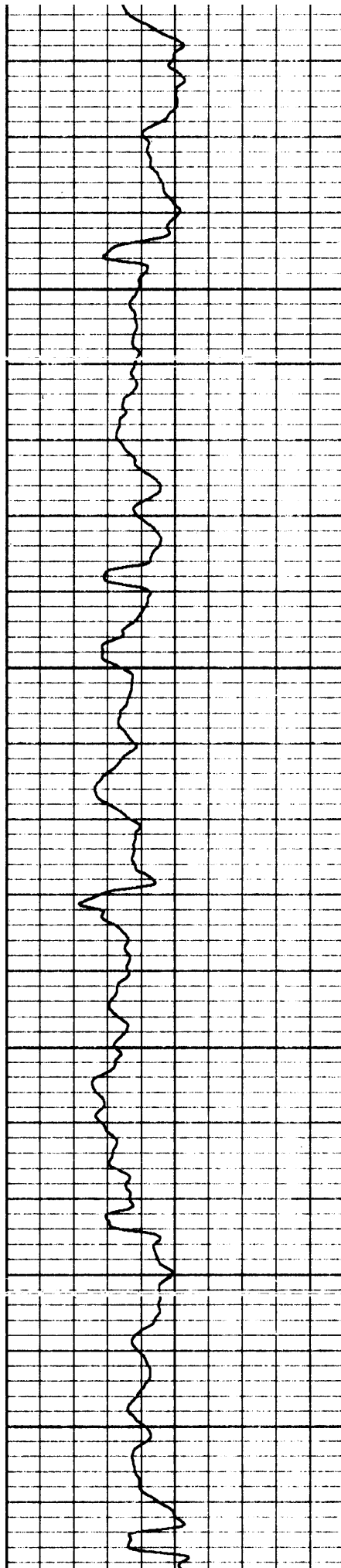
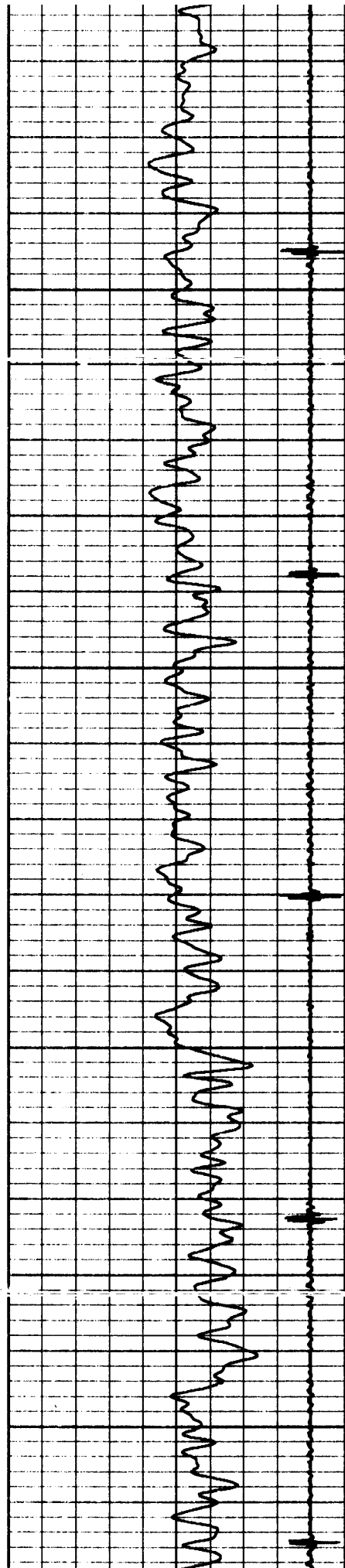


5100

5150

5200

5250

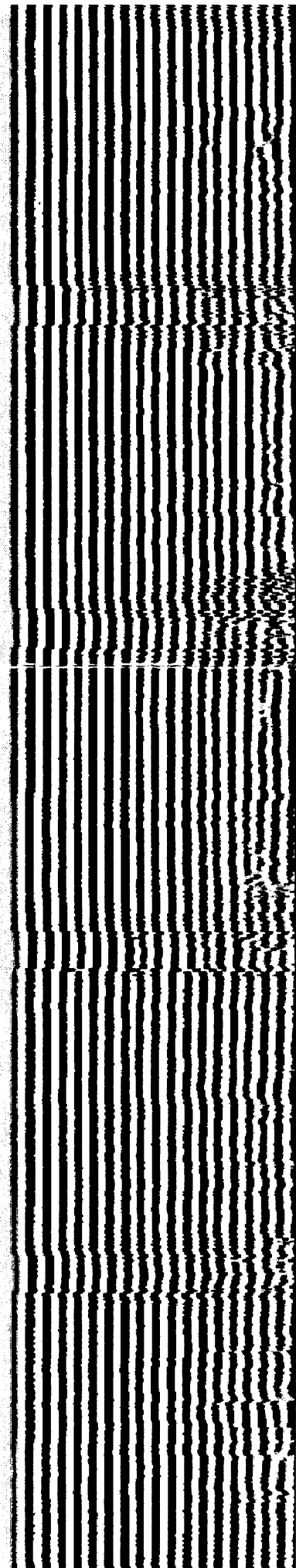


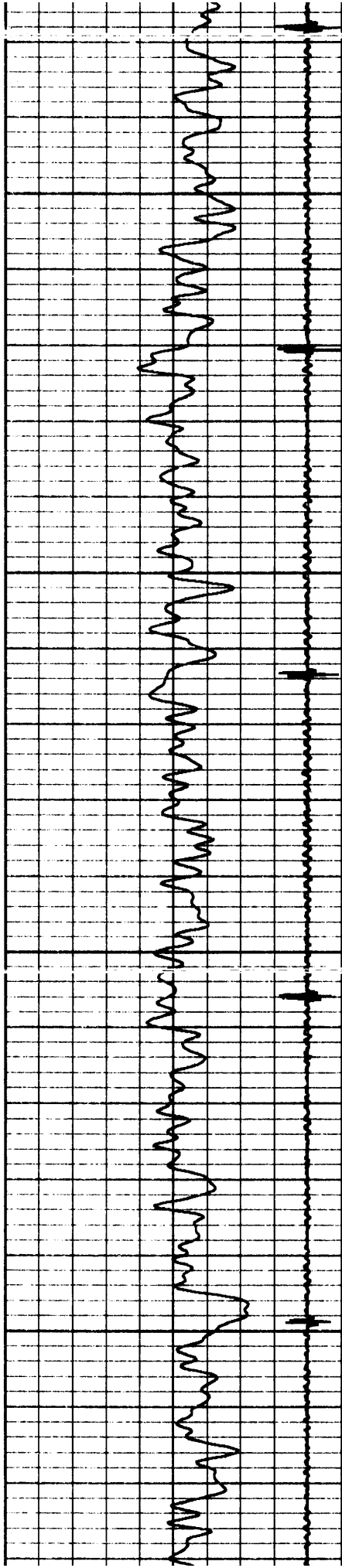
5300

5350

5400

5450



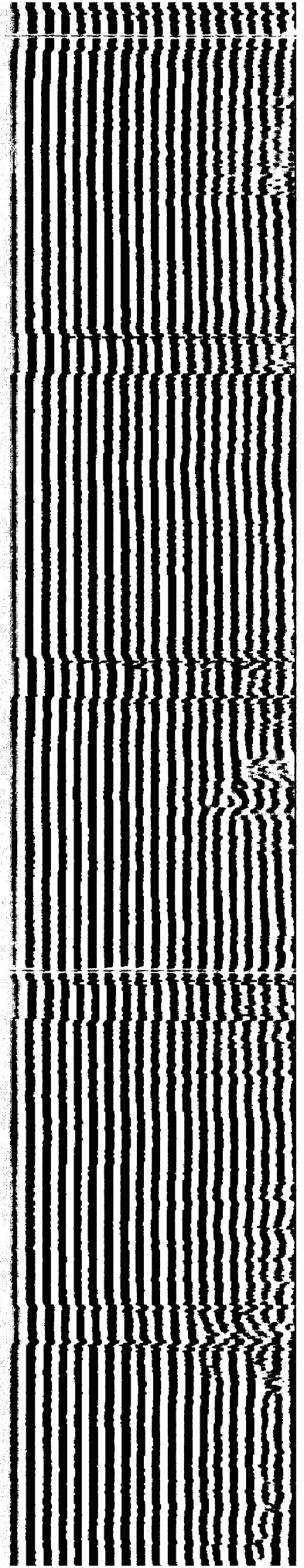
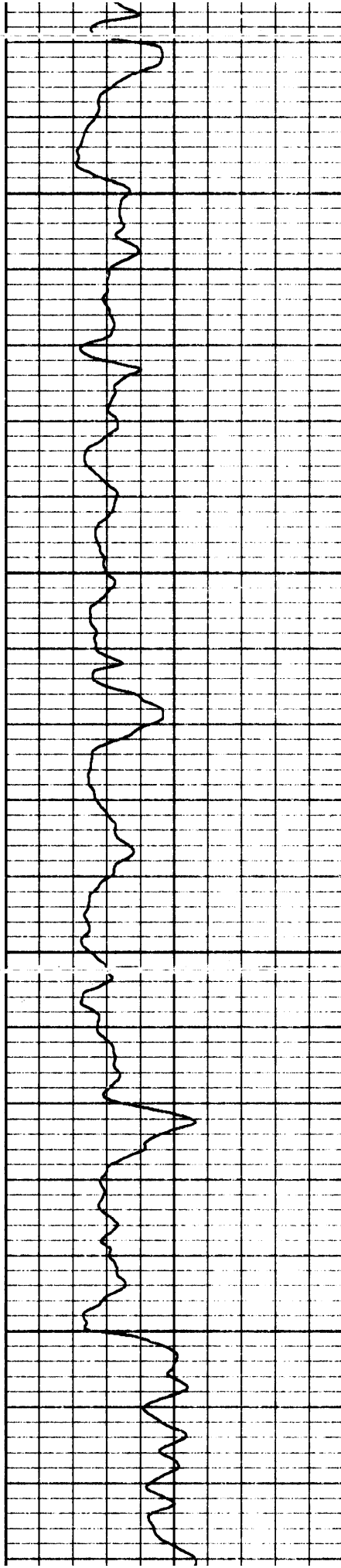


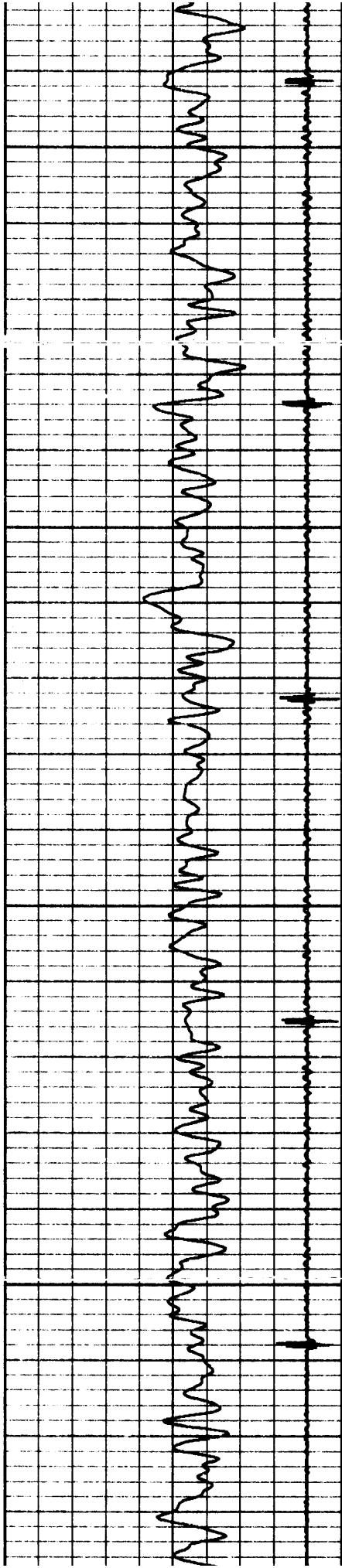
5500

5550

5600

5650



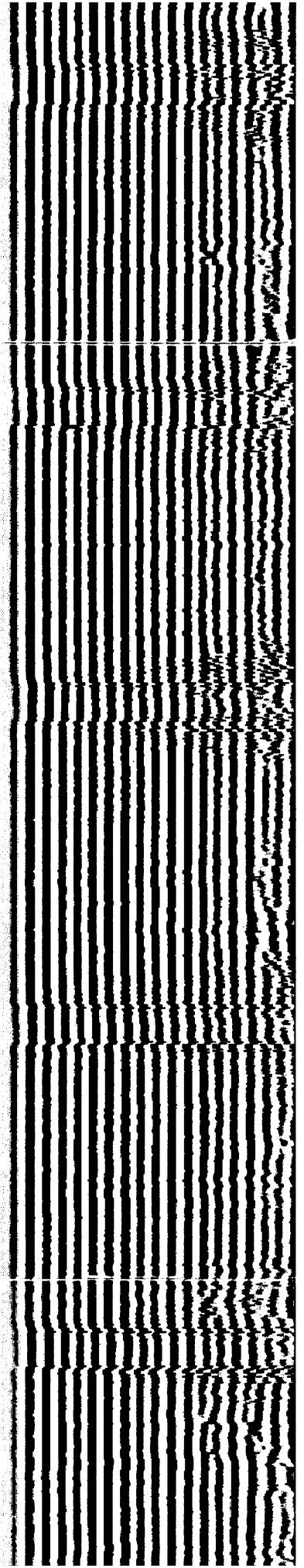
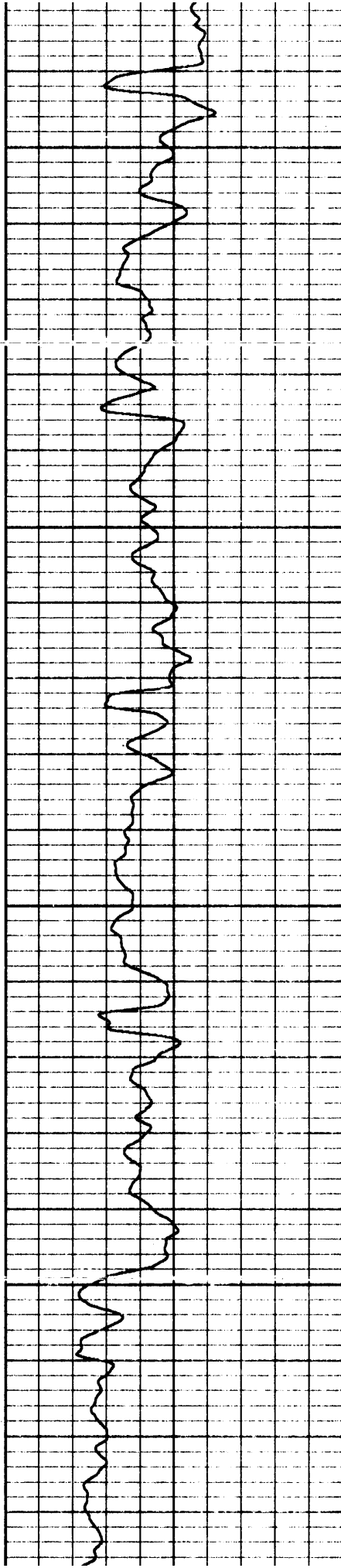


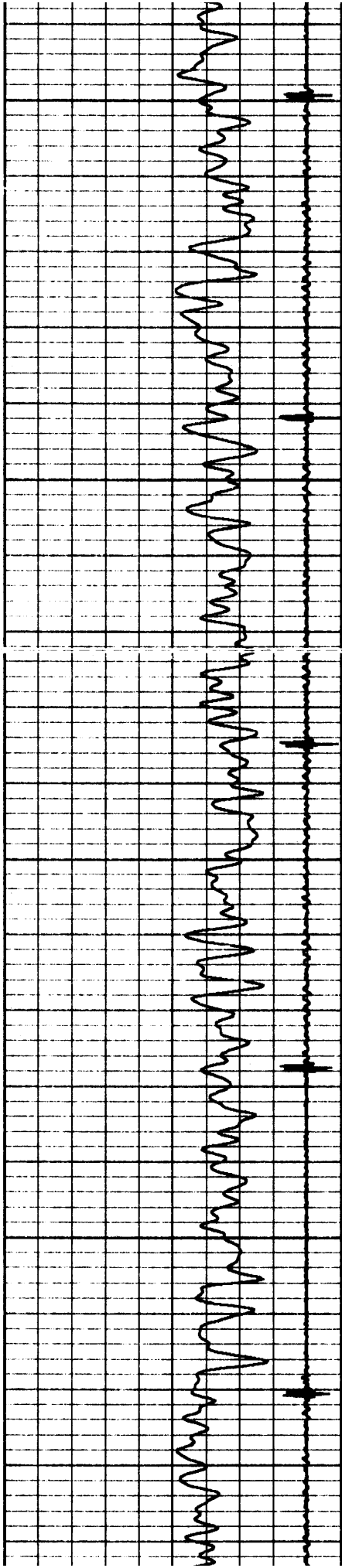
5700

5750

5800

5850



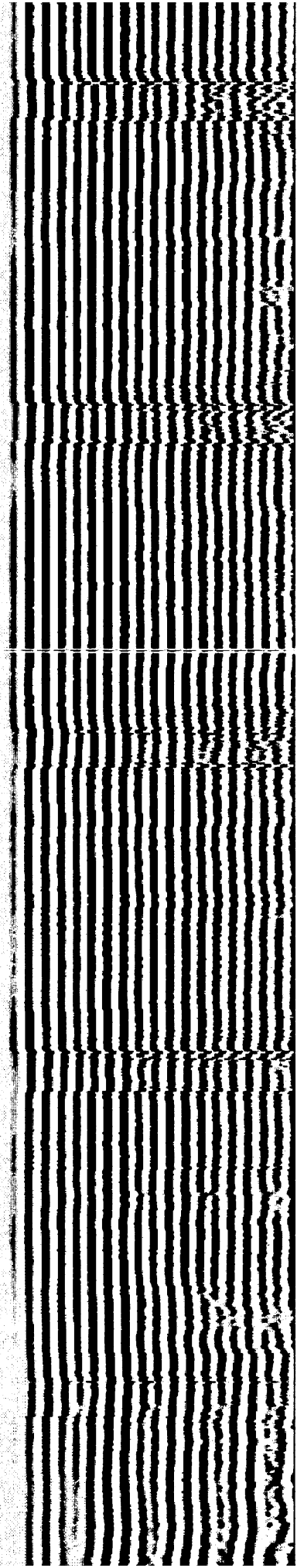
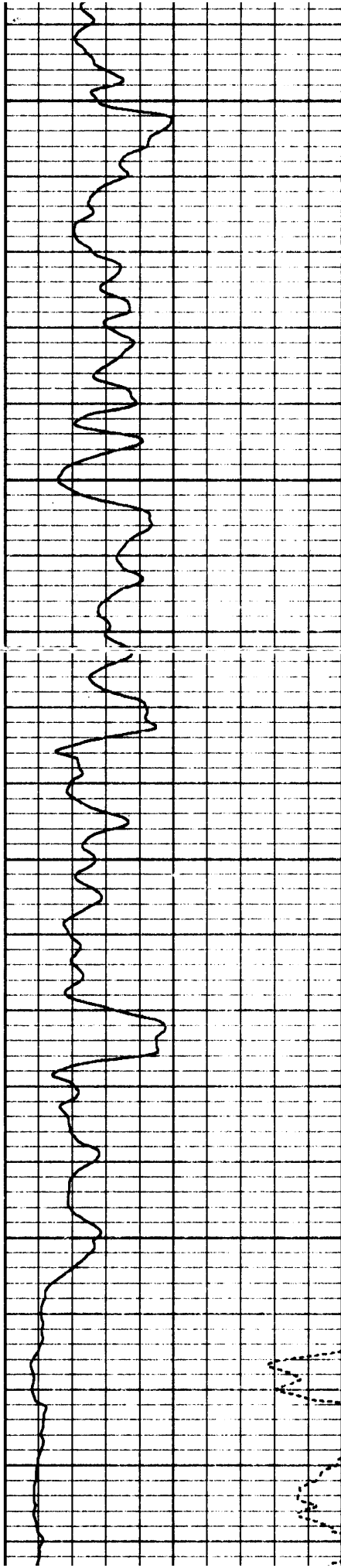


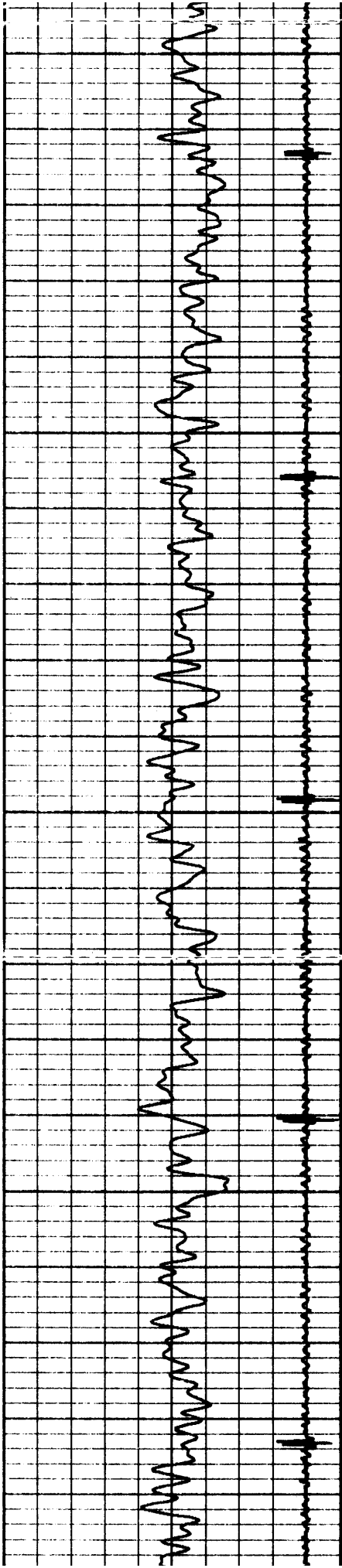
5900

5950

6000

6050



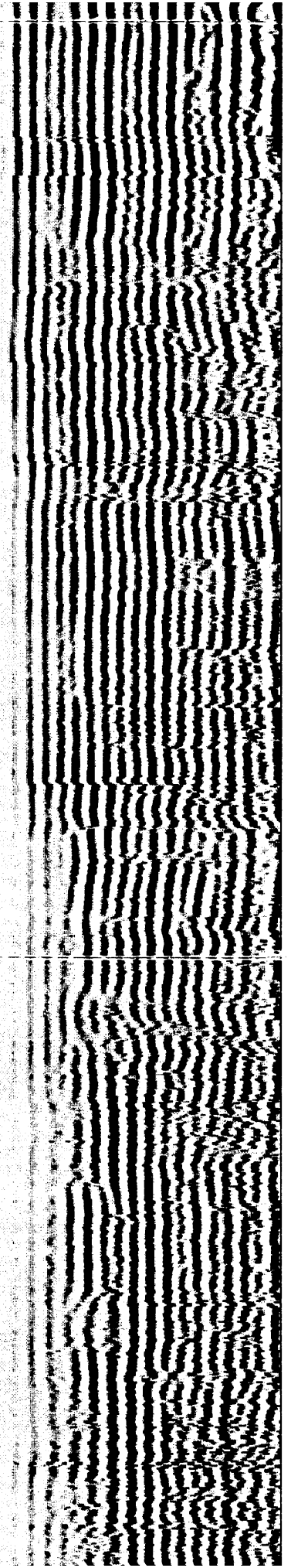
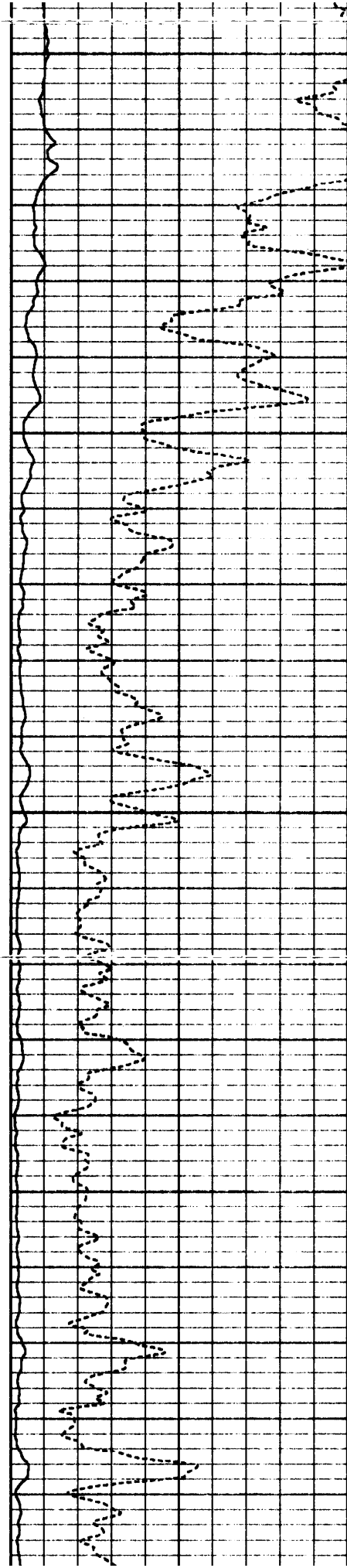


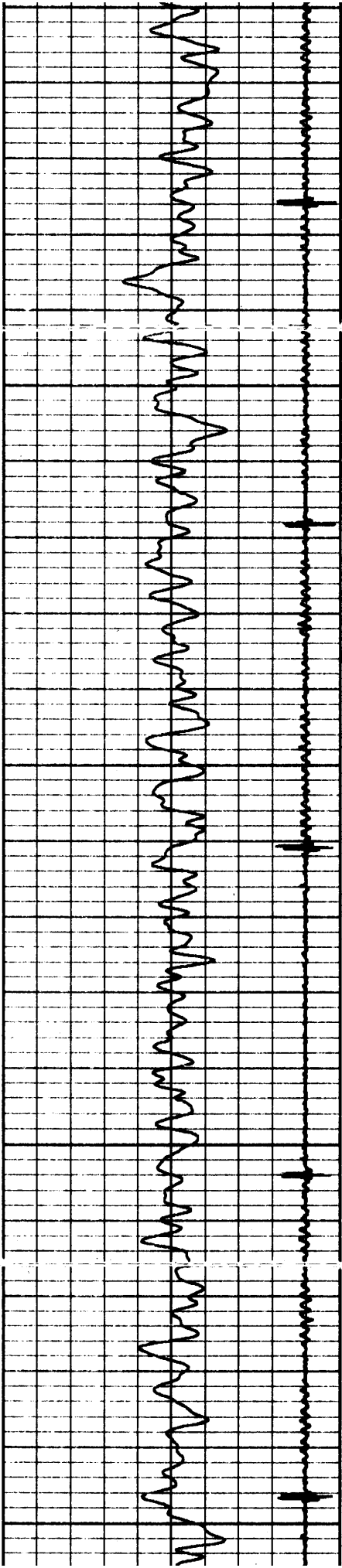
6100

6150

6200

6250





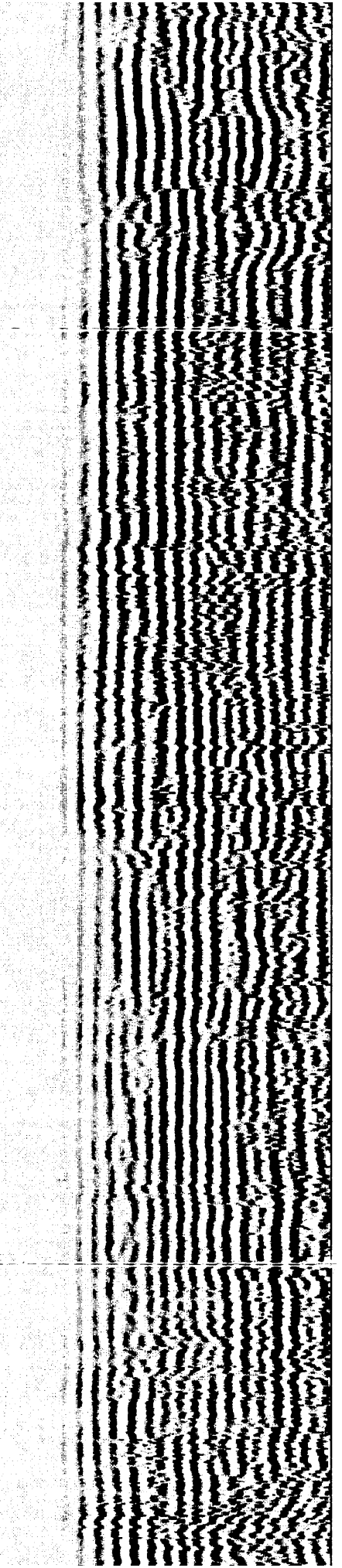
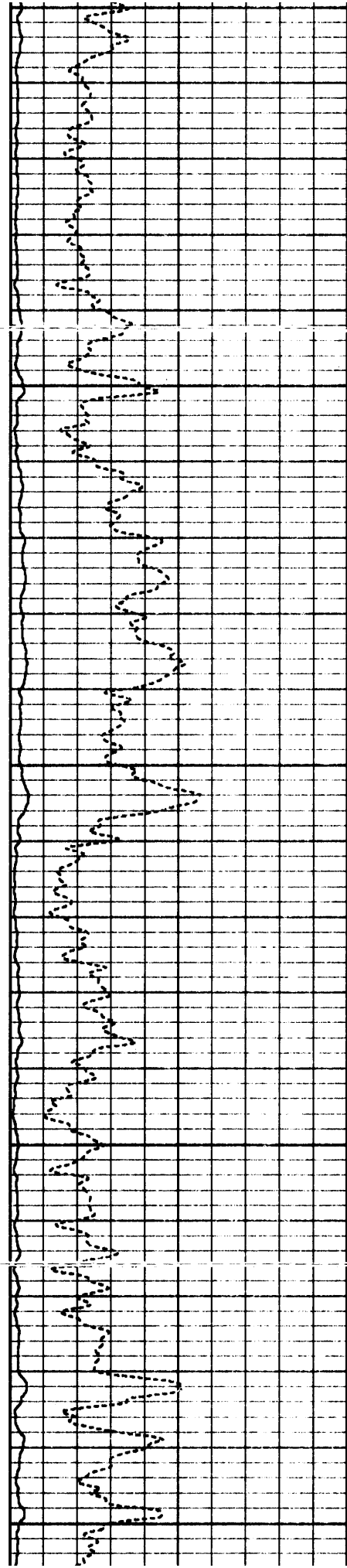
6300

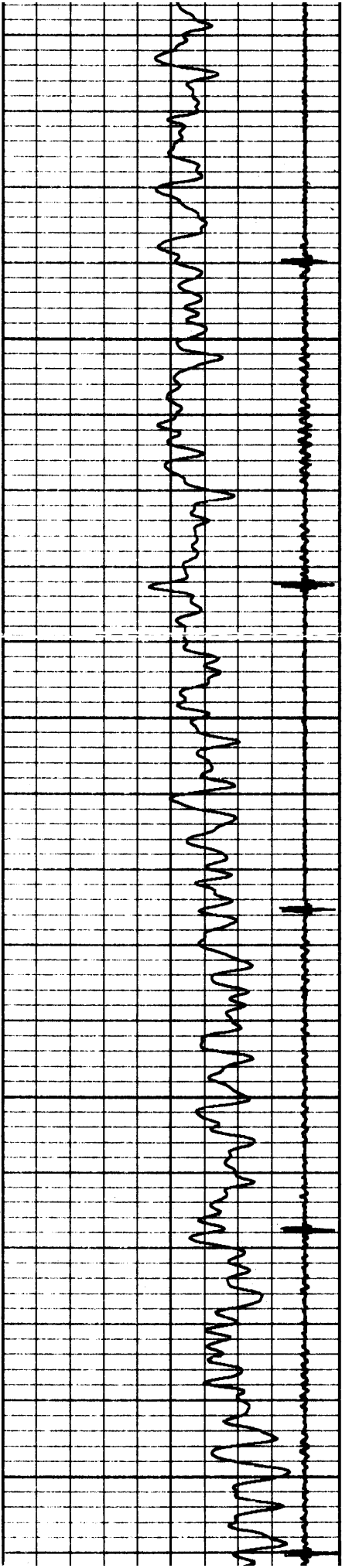
6350

6400

6450

6500



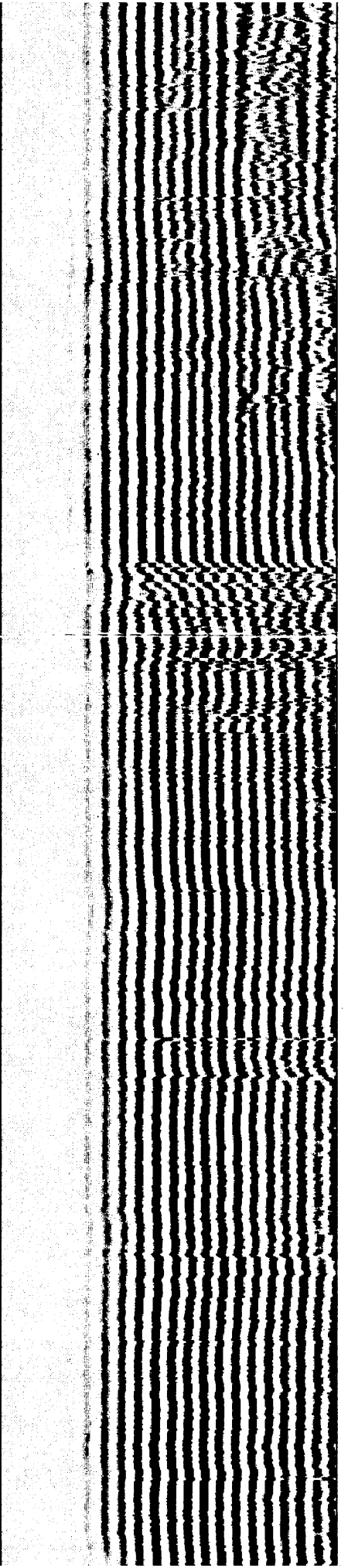
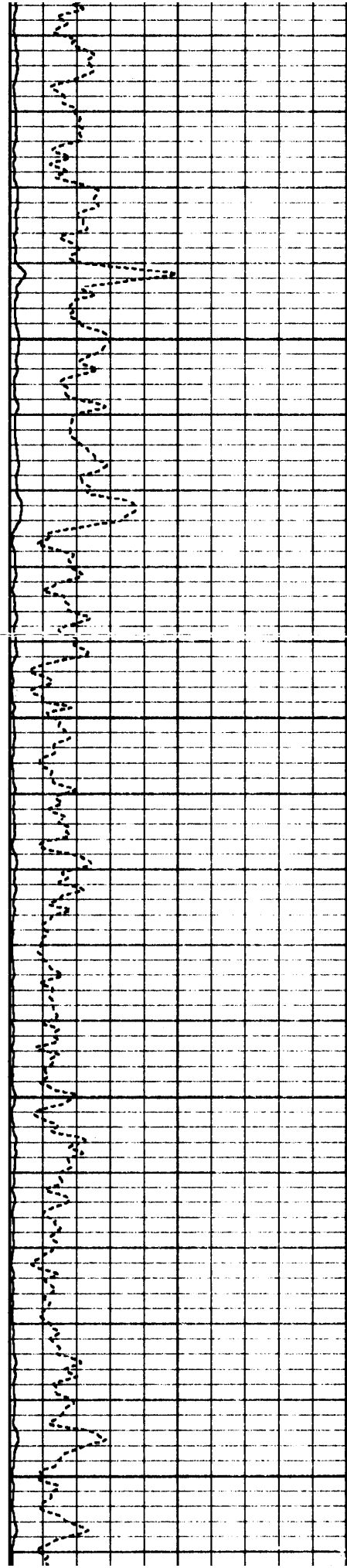


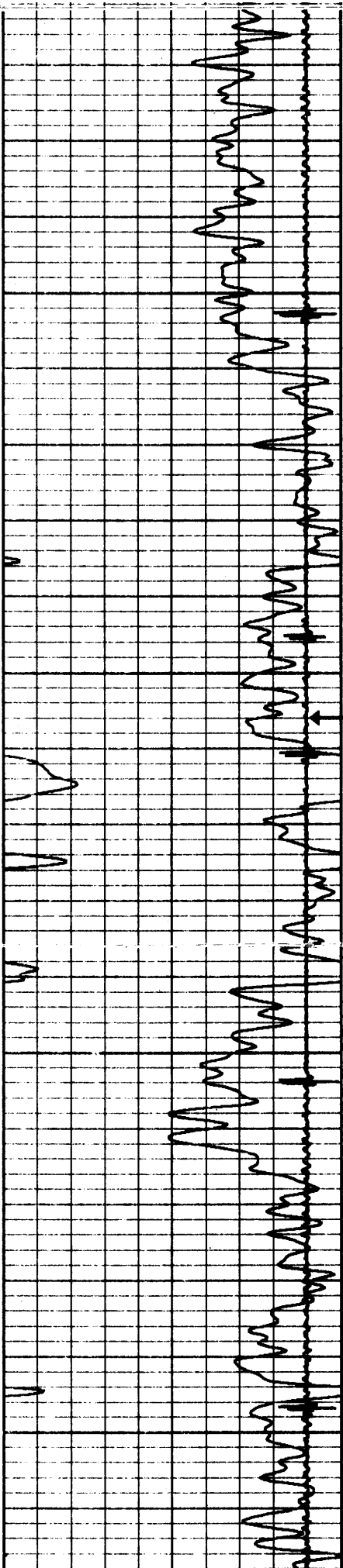
6550

6600

6650

6700





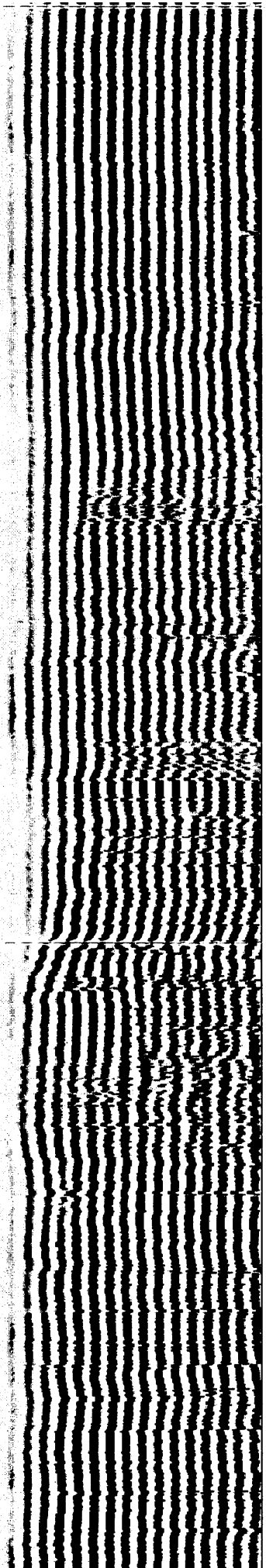
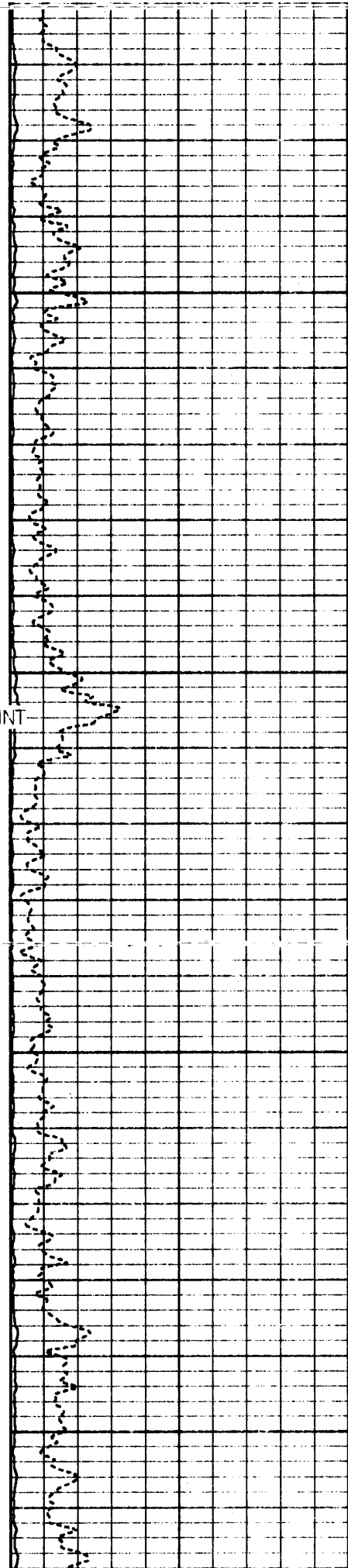
6750

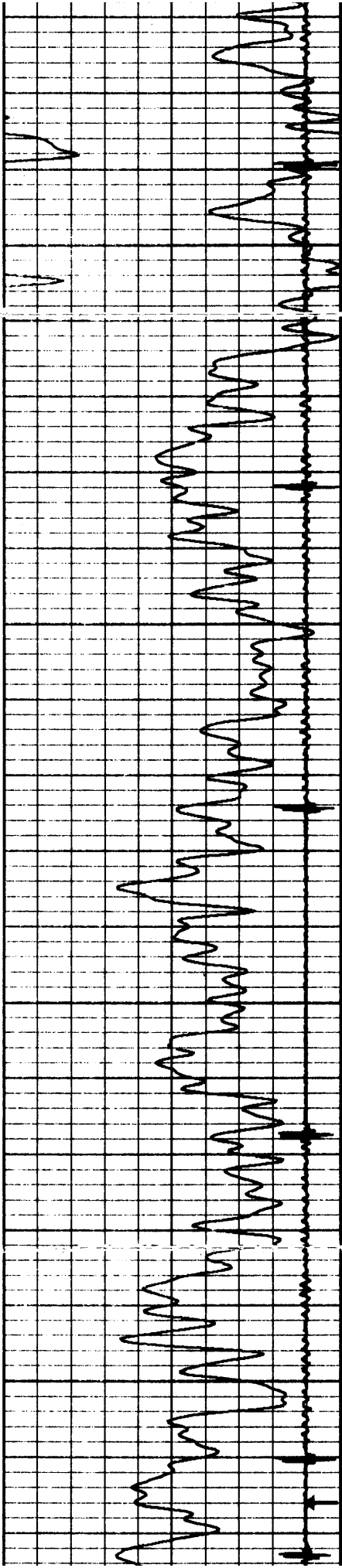
6800

SHORT JOINT

6850

6900





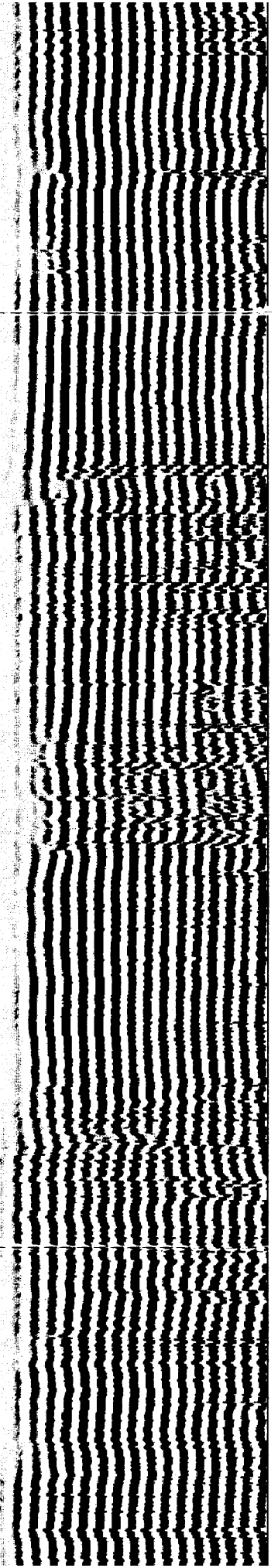
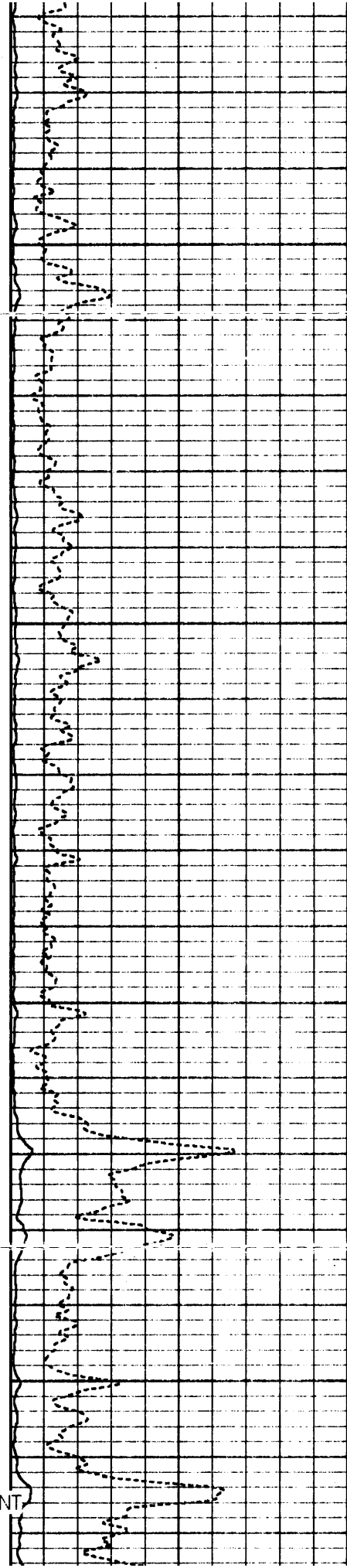
6950

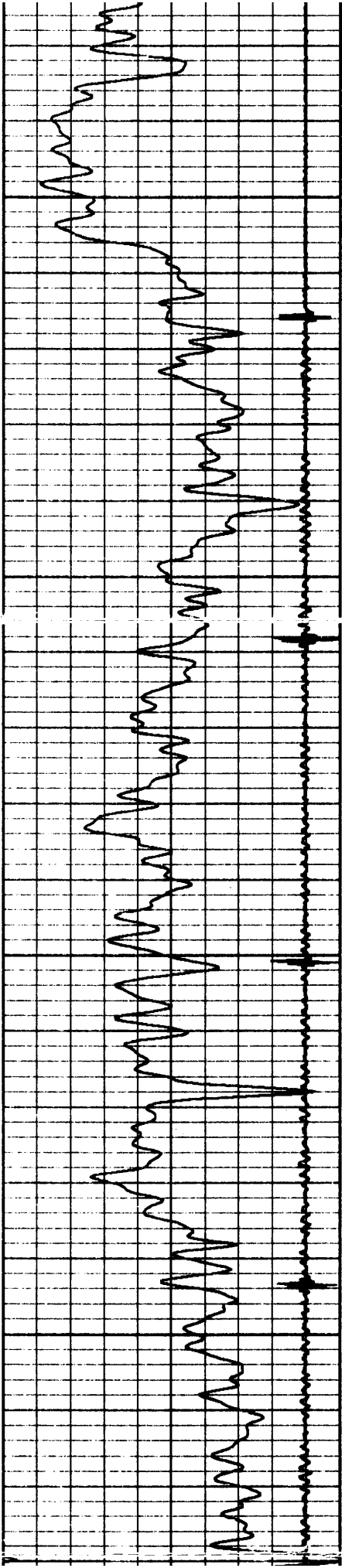
7000

7050

7100

SHORT JOINT



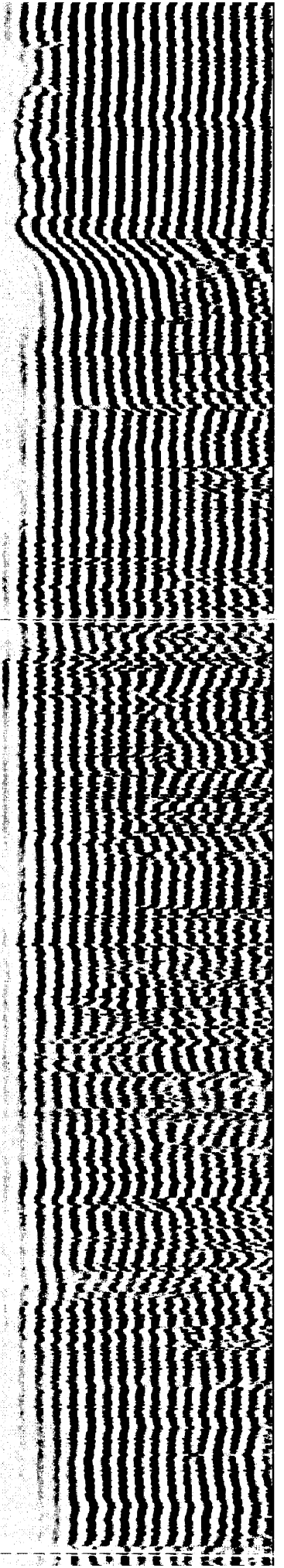
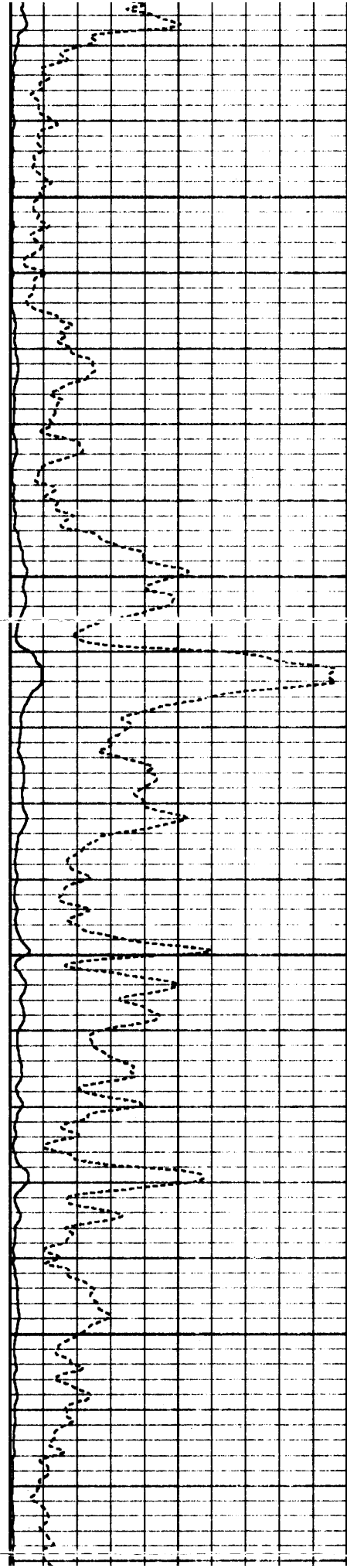


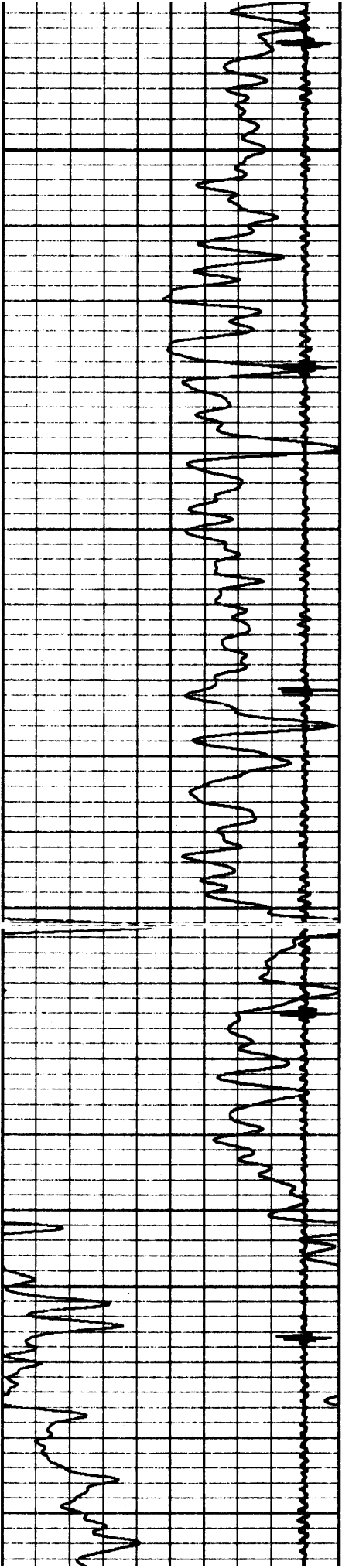
7150

7200

7250

7300



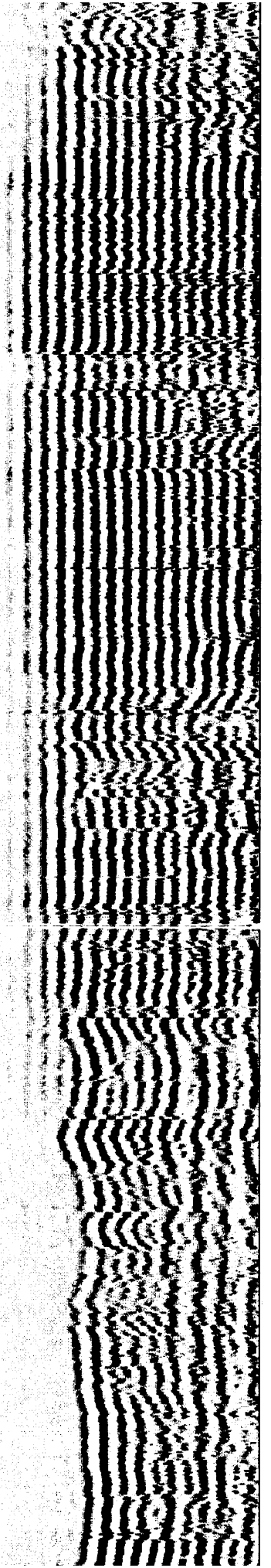
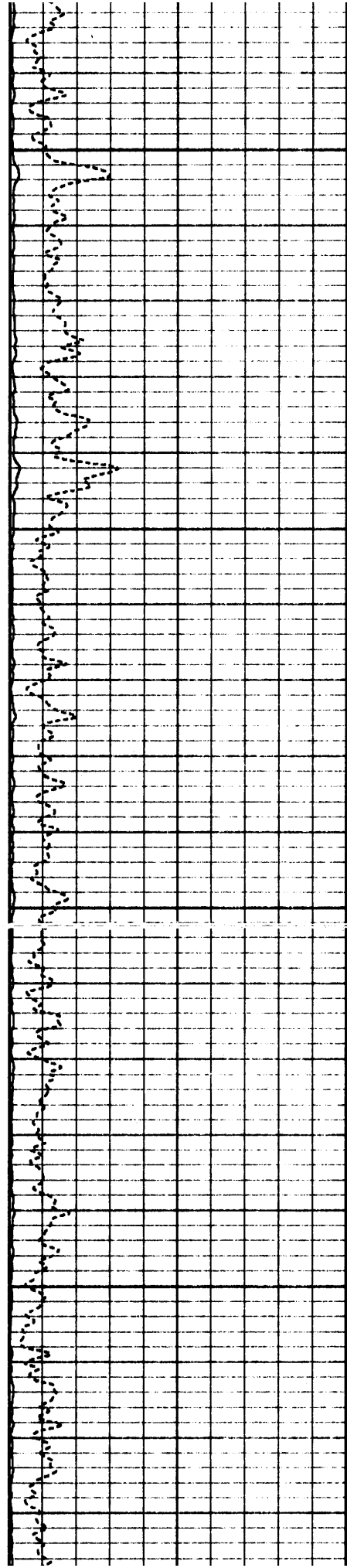


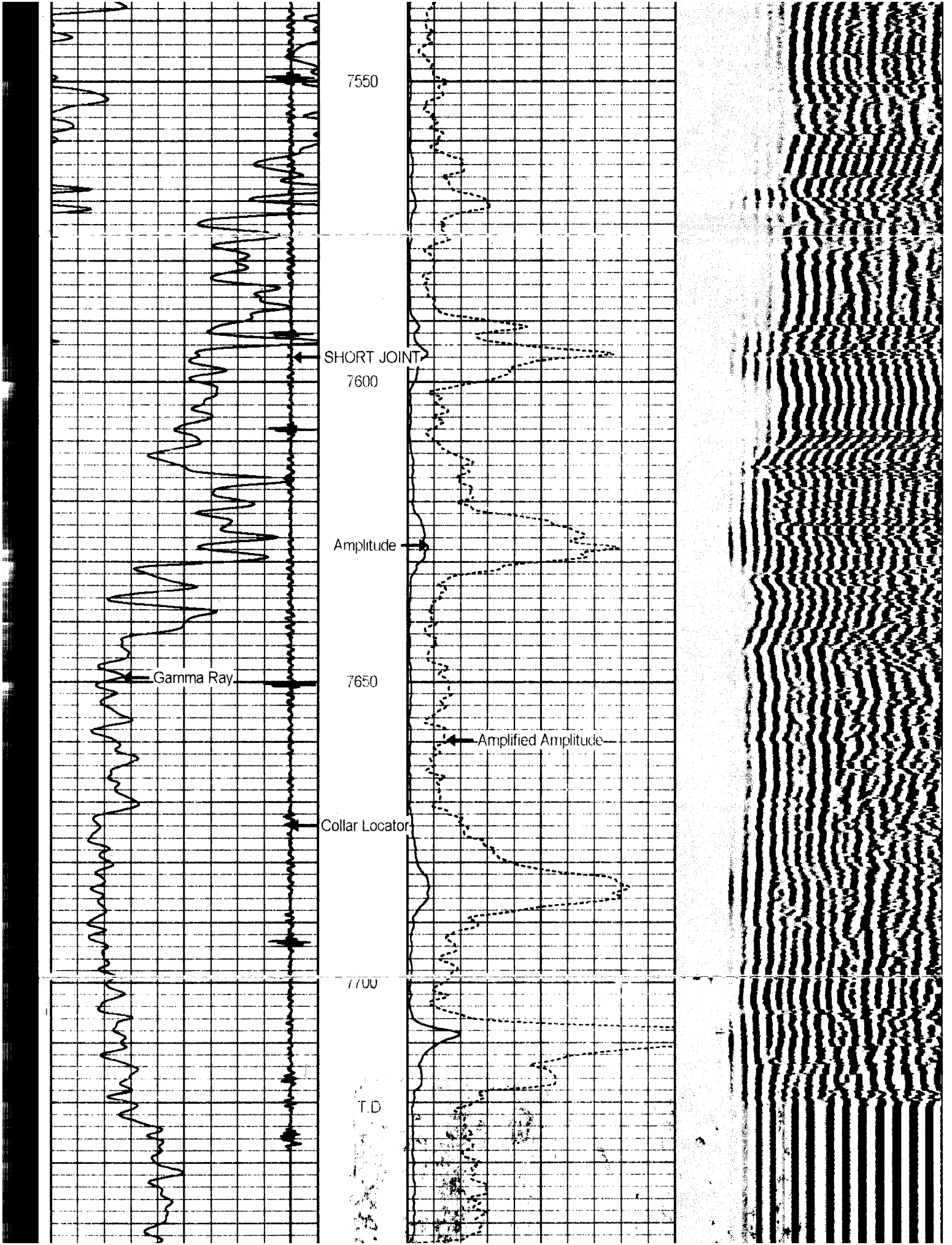
7350

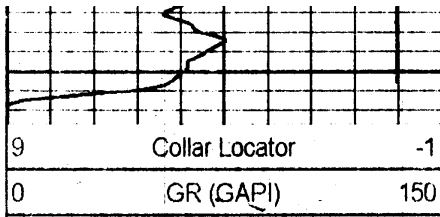
7400

7450

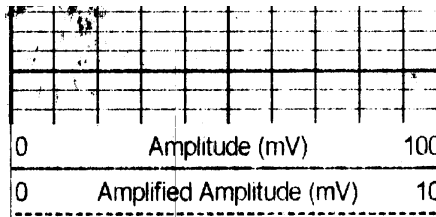
7500







7750



Variable Density

1200

HALLIBURTON

Main Log

5"=100'