



HALLIBURTON

Cement Bond
Gamma Ray CCL

123-26442

Company Noble Energy Production Inc
Well Schank J 35-17
Field Wattenberg
County Weld State Colorado

Company Noble Energy Production Inc
Well Schank J 35-17
Field Wattenberg
County Weld State Colorado
API No. 05-123-26452-00
Location: SHL 2520' FNL & 1399' FEL
BHL 1596' FNL & 1215' FEL
SE NE
Serv # 5603916
Other Services

RECEIVED
DEC 19 2008
COGCC

Sec: 35 Twp: 5N Rge: 66W

Permanent Datum GL Elevation 4665
Log Measured From KB 14 Ft. above perm. datum KB 4679
Drilling Measured From KB KB 4665

Date @ Time Logged Jan 15th 2008 Type Fluid in Hole Fresh Water
Run No. One Density of Fluid
Depth - Driller 7428 Fluid Level
Bottom - Logger 7360 Cement Top Est. Logged See Log
Top - Log Interval 1200 Equipment / Location
Max. Recorded Temp. 232 Recorded by Scott Van Vuuren
CEMENTING DATA Surface Protection Production Liner
String String

Date / Time Cemented
Primary / Squeeze
Expected Compressive Strength psi @ hrs psi @ hrs psi @ hrs
Cement Volume
Cement Type / Weight
Formulation
Mud Type / Mud Wgt
Borehole Record
Run Number Bit From To Size Weight From To
4.5 11.6 TD Surface

<<< Fold Here >>>

HALLIBURTON DOES NOT GUARANTEE THE ACCURACY OF ANY INTERPRETATION OF THE LOG DATA, CONVERSION OF LOG DATA TO PHYSICAL ROCK PARAMETERS OR RECOMMENDATIONS WHICH MAY BE GIVEN BY HALLIBURTON PERSONNEL OR WHICH APPEAR ON THE LOG OR IN ANY OTHER FORM. ANY USER OF SUCH DATA, INTERPRETATIONS, CONVERSIONS, OR RECOMMENDATIONS AGREES THAT HALLIBURTON IS NOT RESPONSIBLE EXCEPT WHERE DUE TO GROSS NEGLIGENCE OR WILLFUL MISCONDUCT, FOR ANY LOSS, DAMAGES, OR EXPENSES RESULTING FROM THE USE THEREOF.

Comments

Depth ref to PSI log dated Dec 23 2007

Crew: Van Vuuren, Townsend, McCoy

Thank you for Using Halliburton

HALLIBURTON

Sussex Log

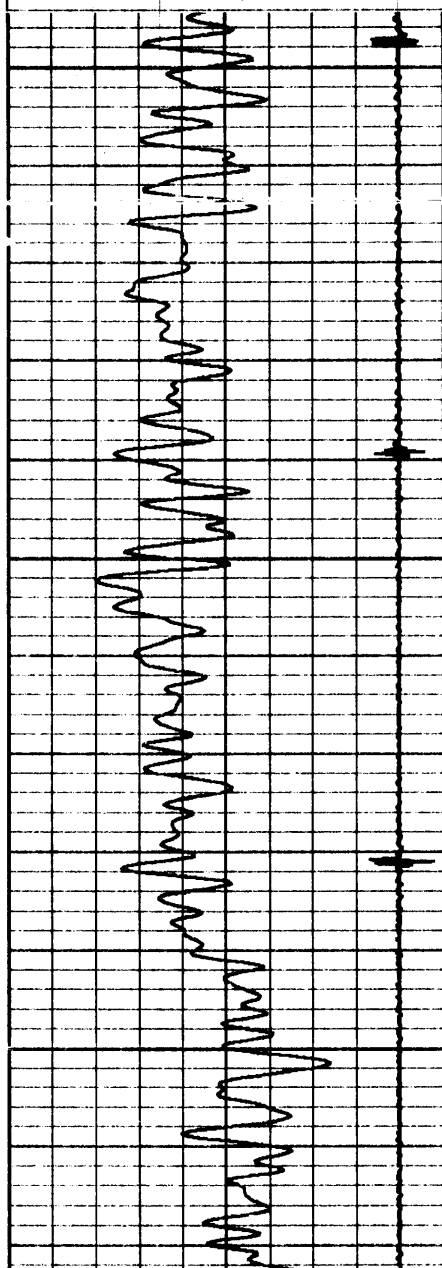
5"=100'

Database File: noble schank j35-17.db
Dataset Pathname: pass2
Presentation Format: cbldig
Dataset Creation: Tue Jan 15 15:45:48 2008 by Log Halliburton Casedho
Charted by: Depth in Feet scaled 1:240

9	Collar Locator	-1
30	GR (GAPI)	130

0	Amplitude (mV)	100	200
0	Amplified Amplitude (mV)	10	

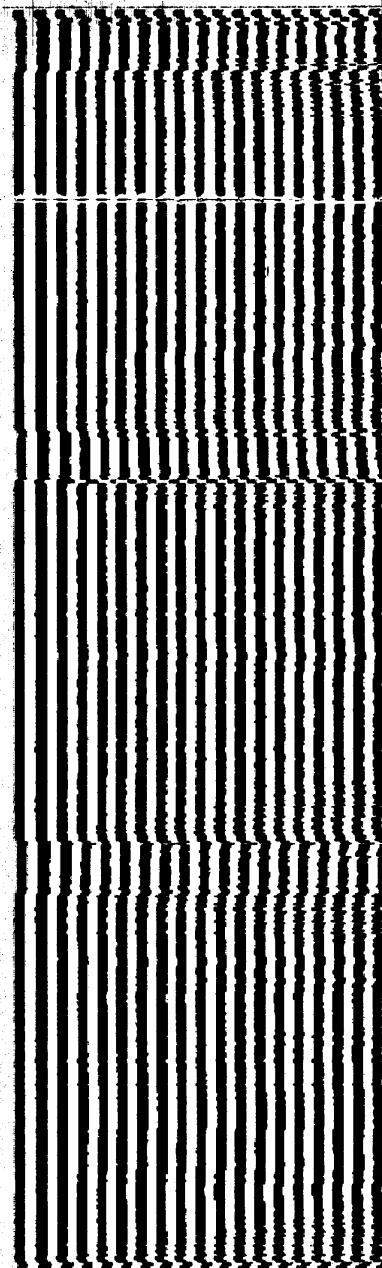
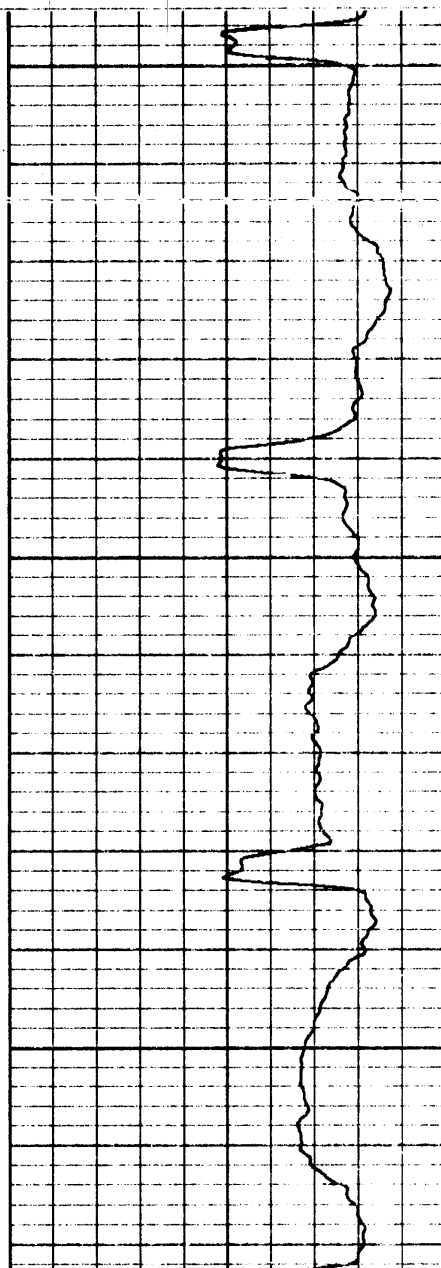
Variable Density 1200

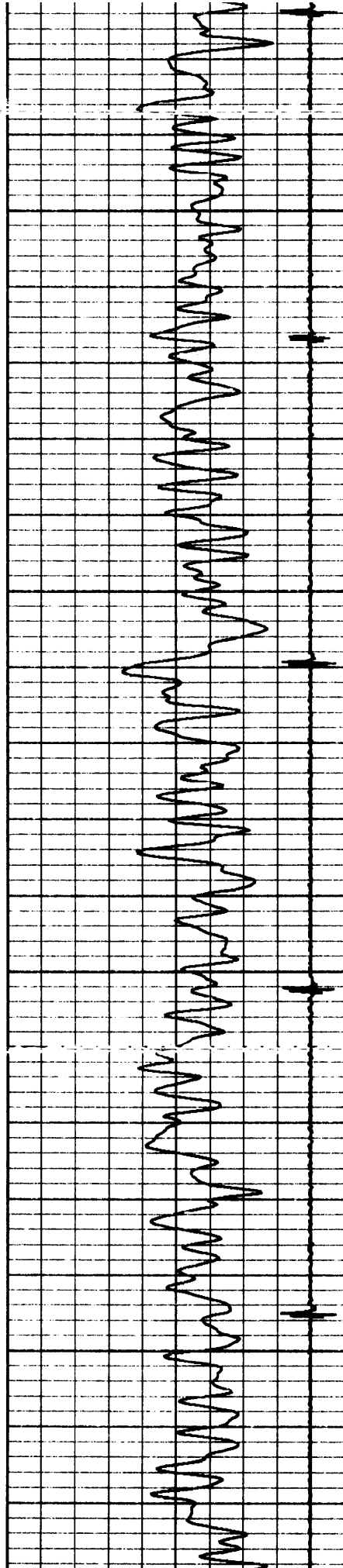


1200

1250

1300



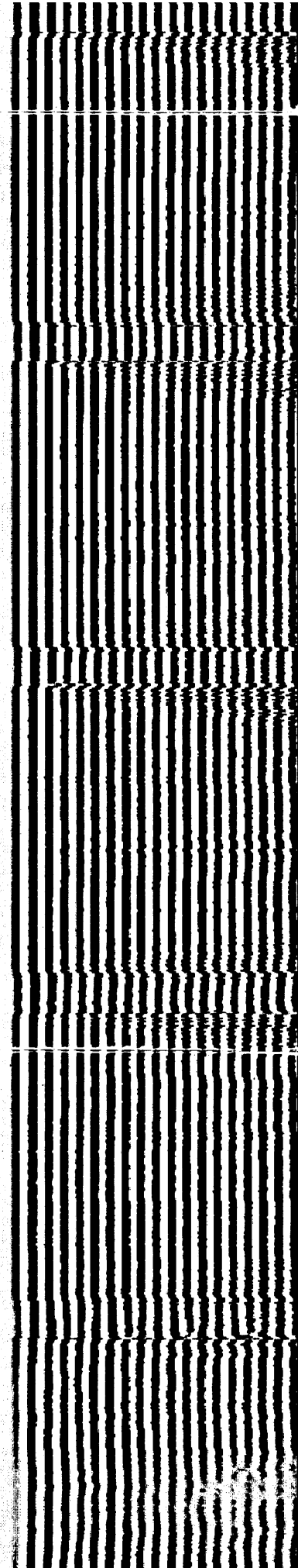
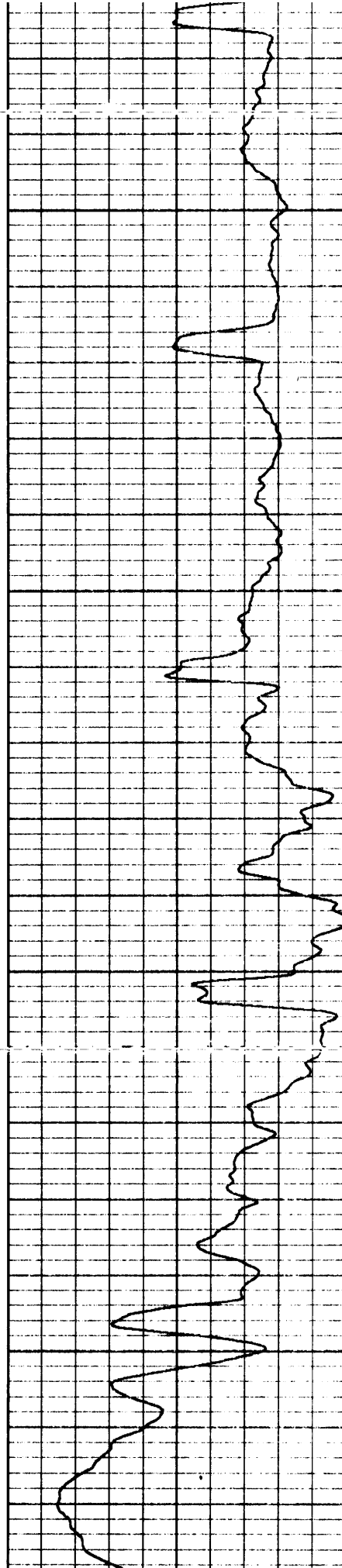


1350

1400

1450

1500

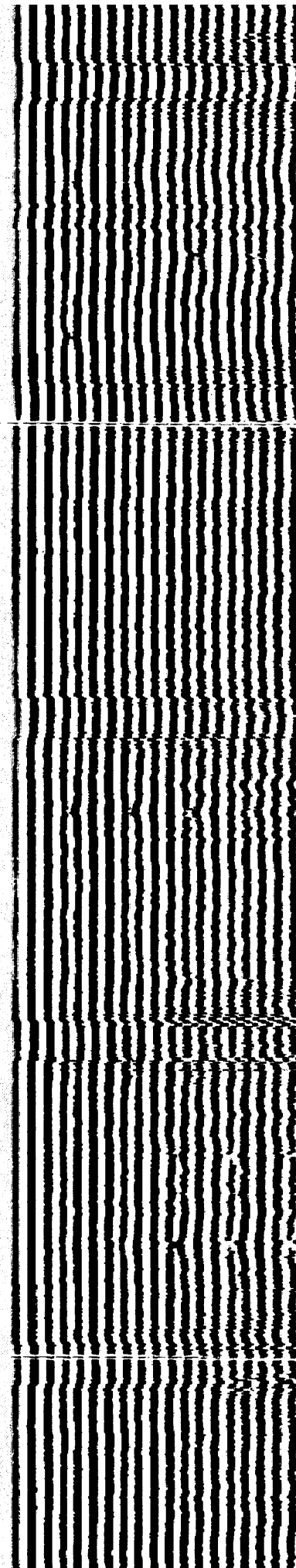
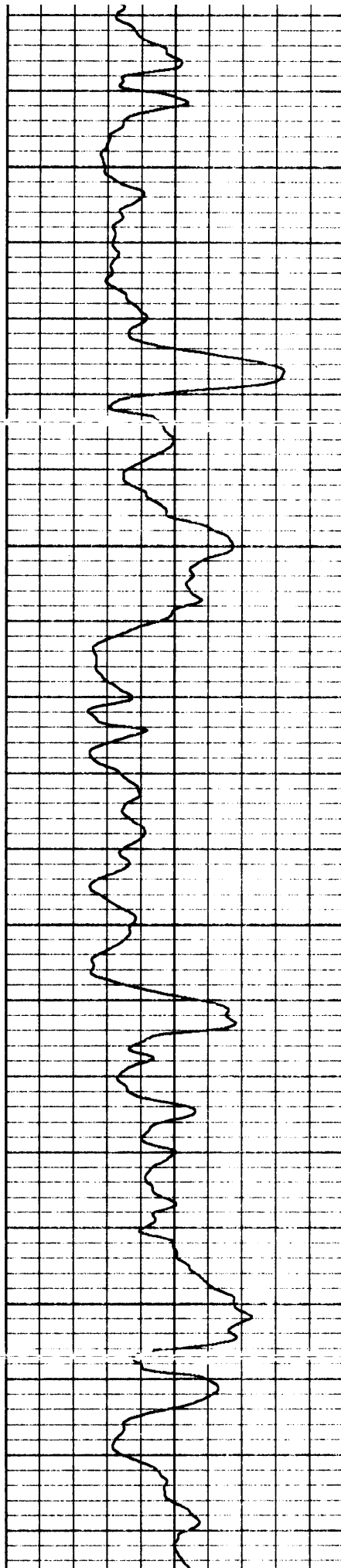
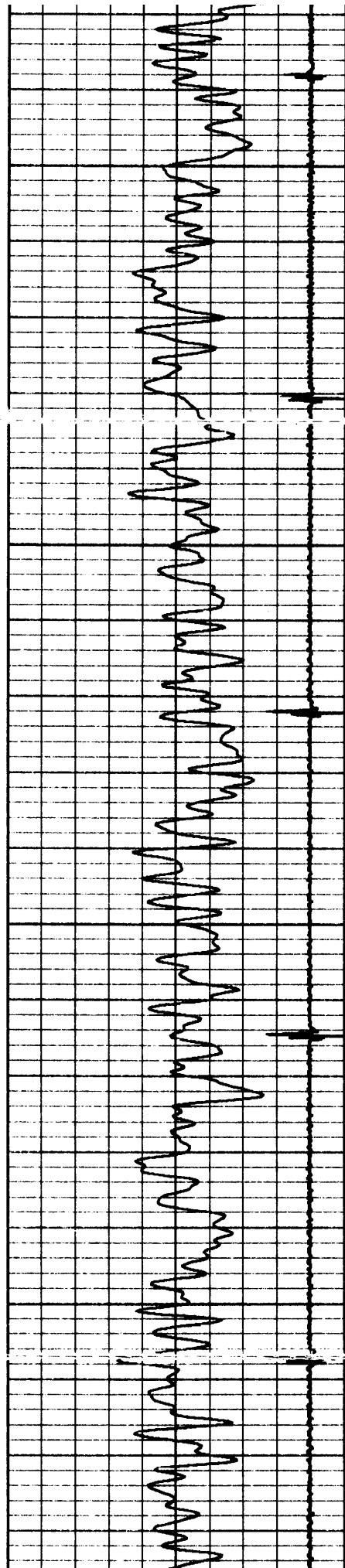


1550

1600

1650

1700

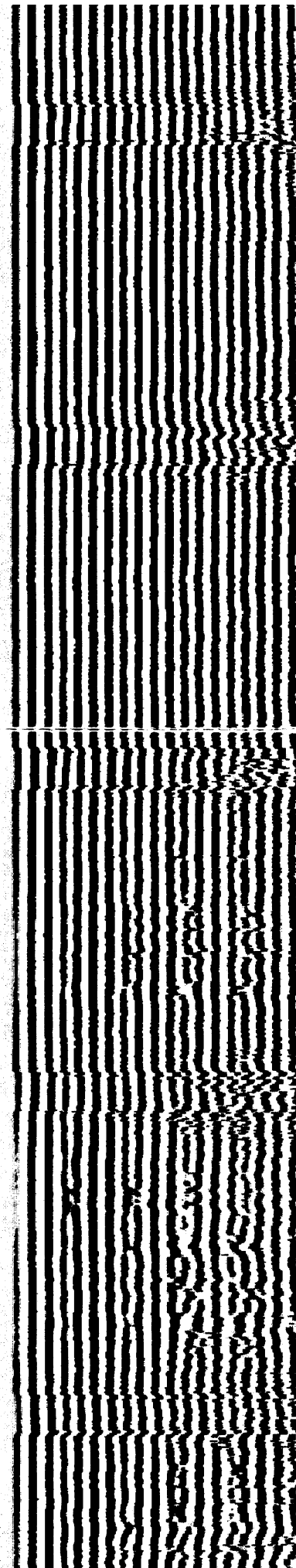
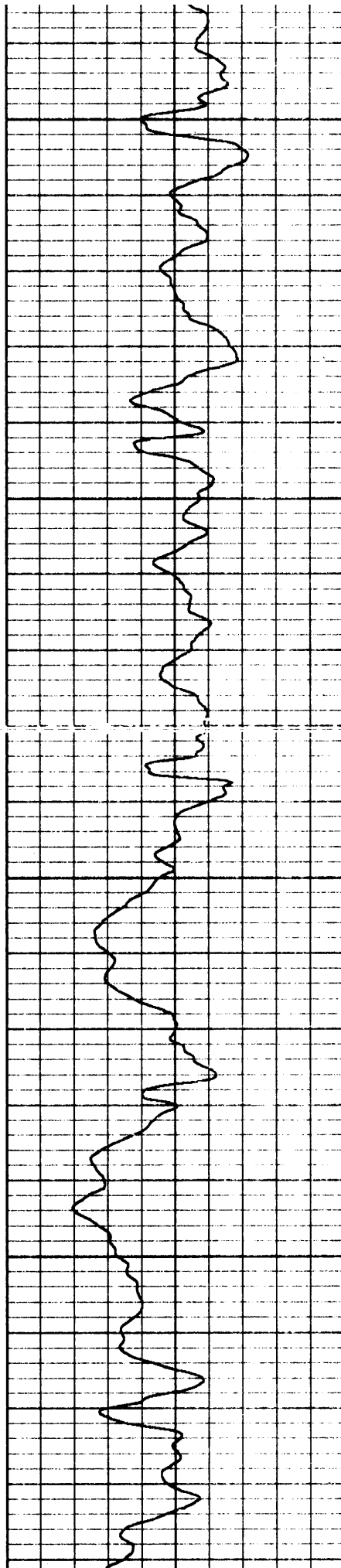
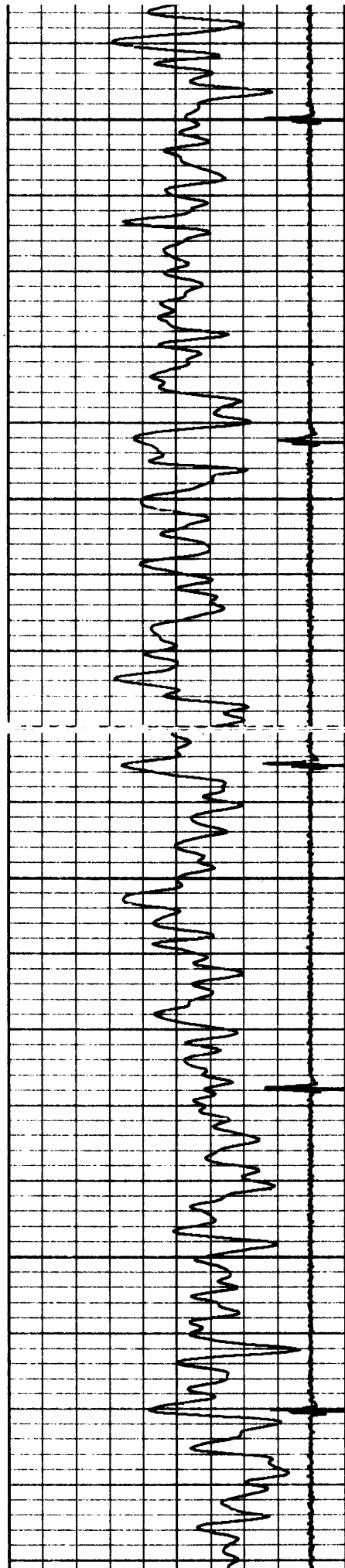


1750

1800

1850

1900

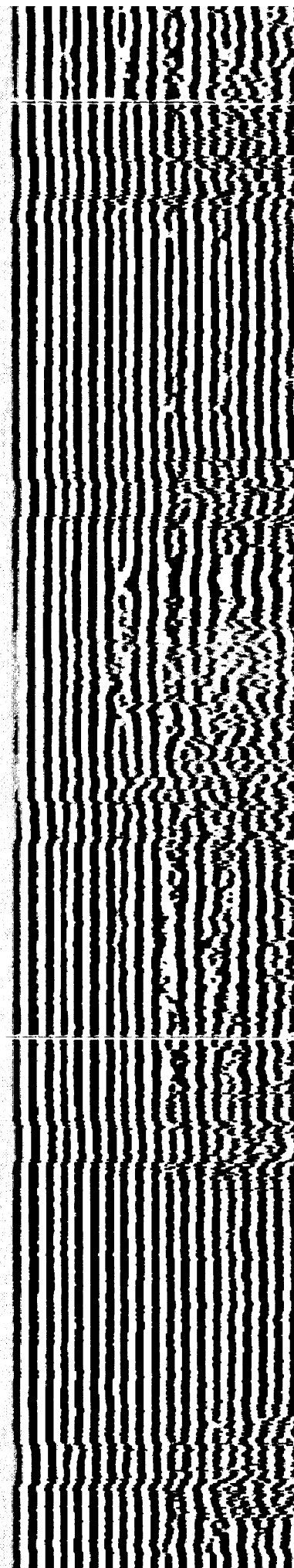
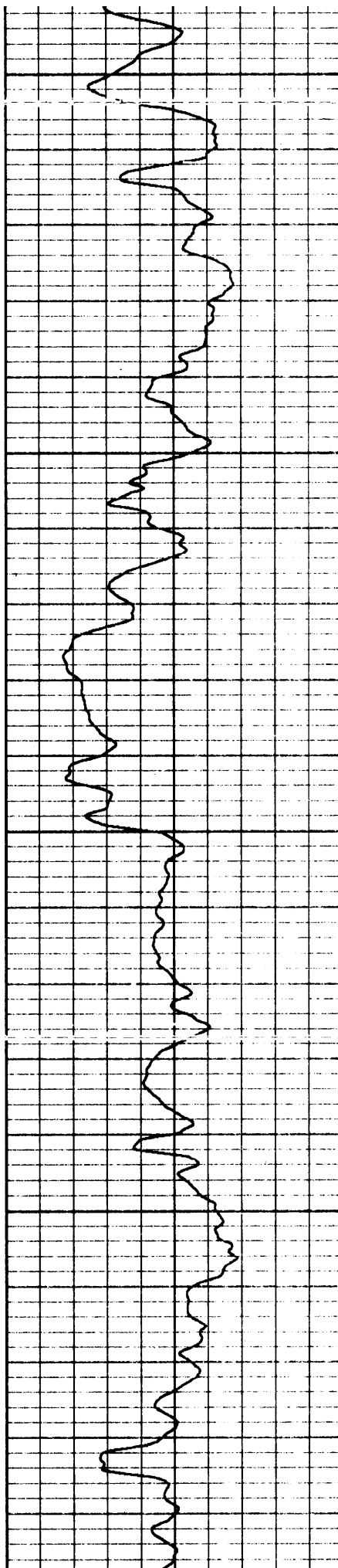
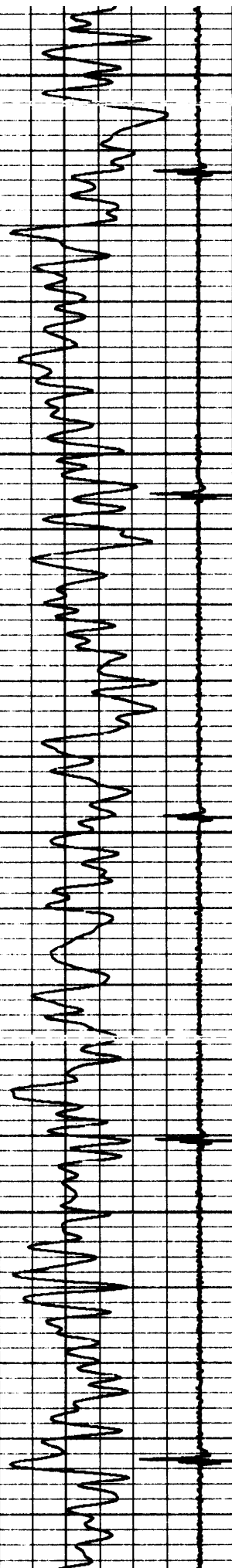


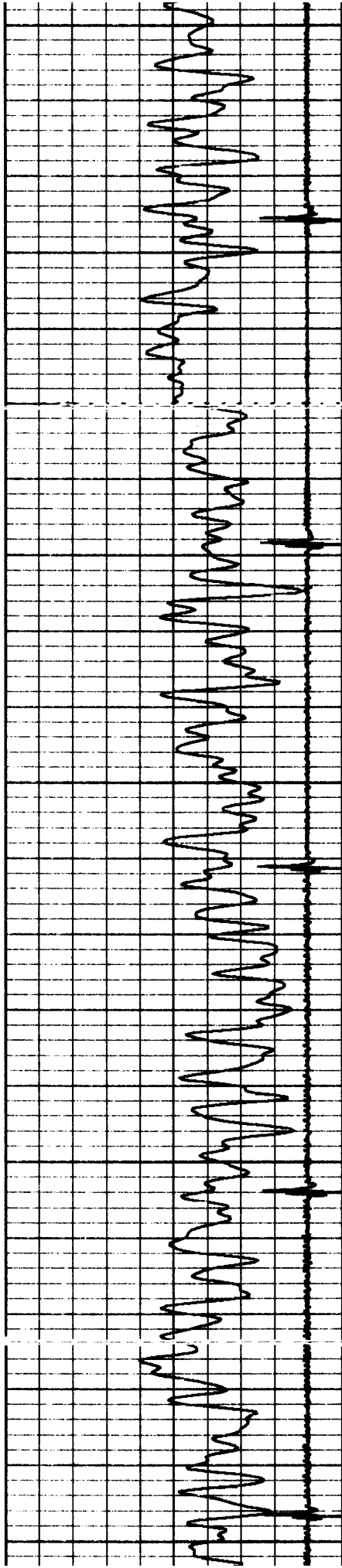
1950

2000

2050

2100





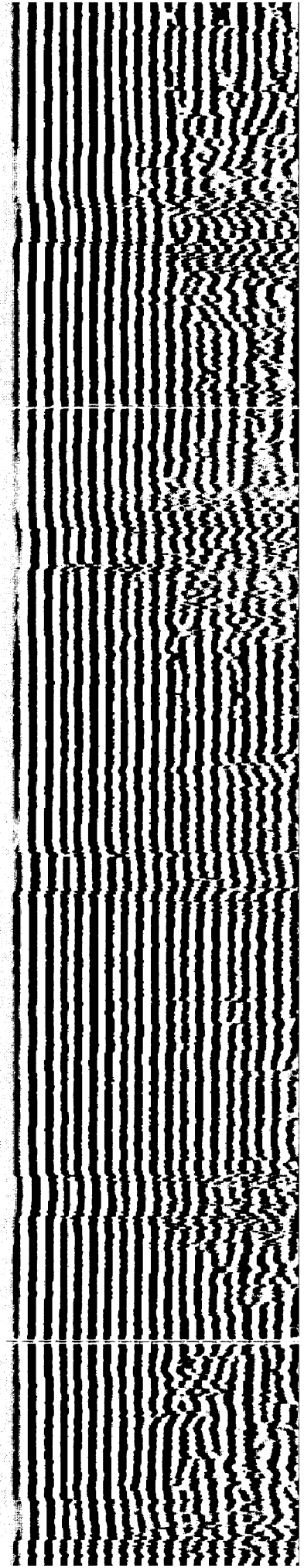
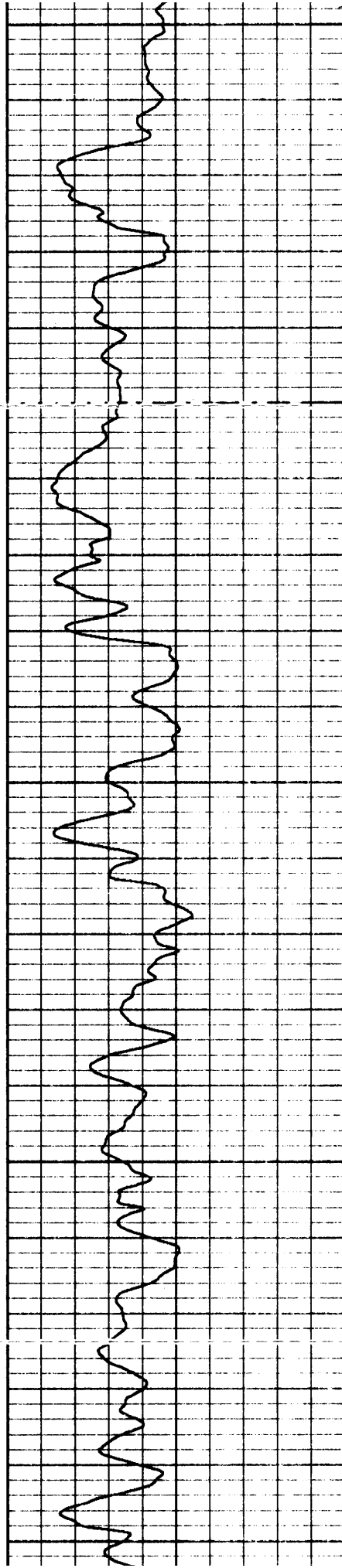
2150

2200

2250

2300

2350

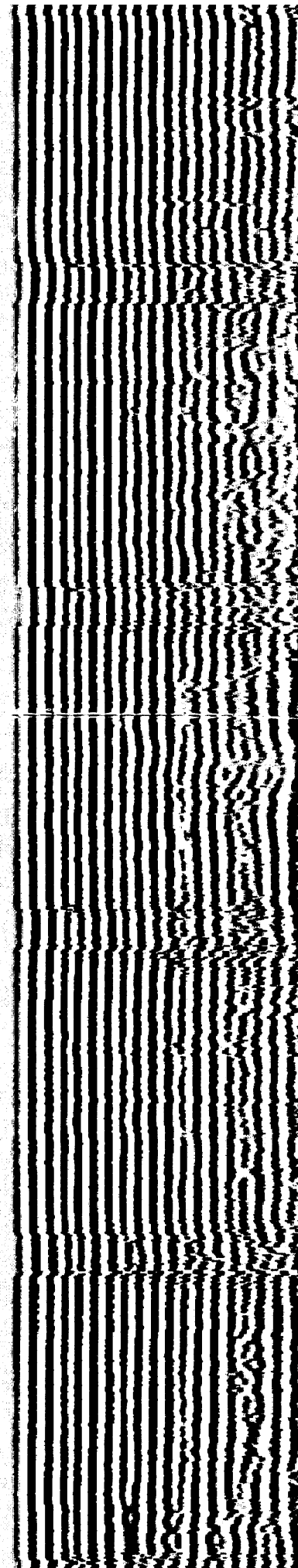


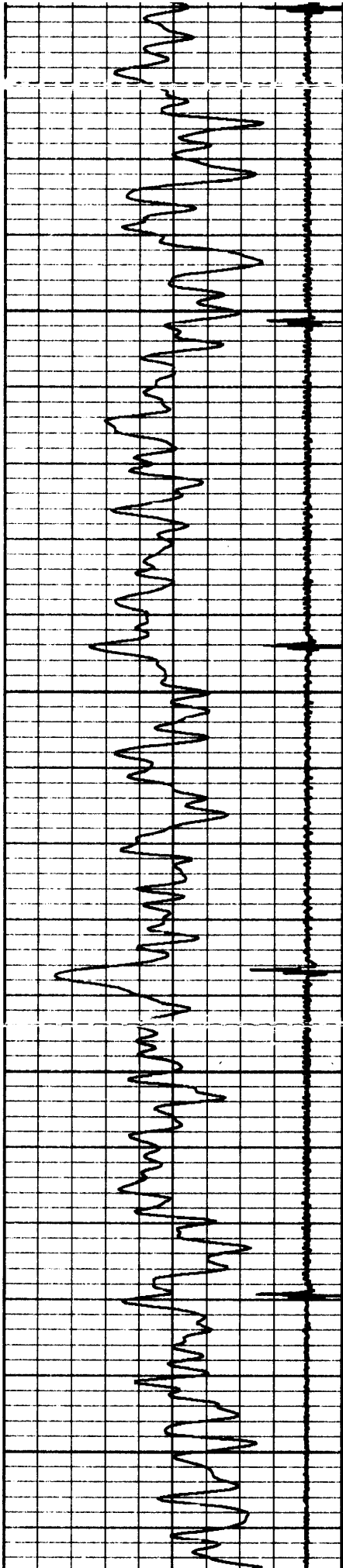
2400

2450

2500

2550



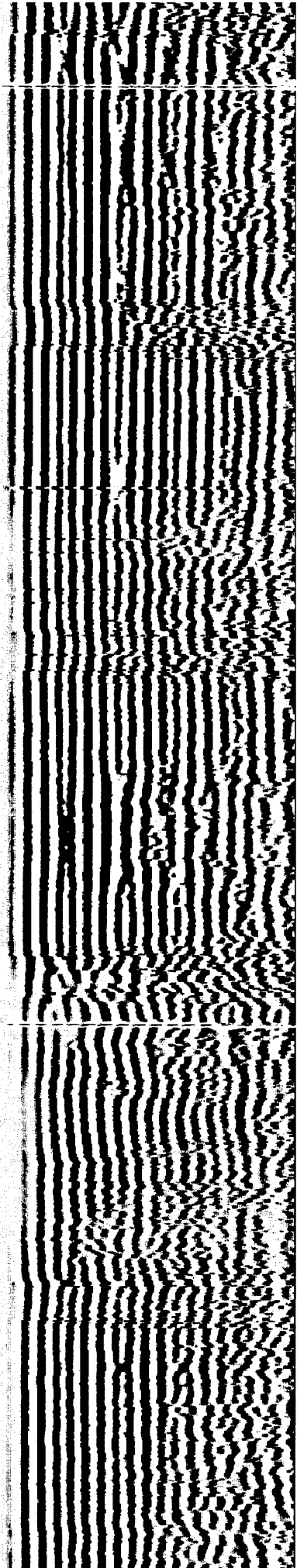
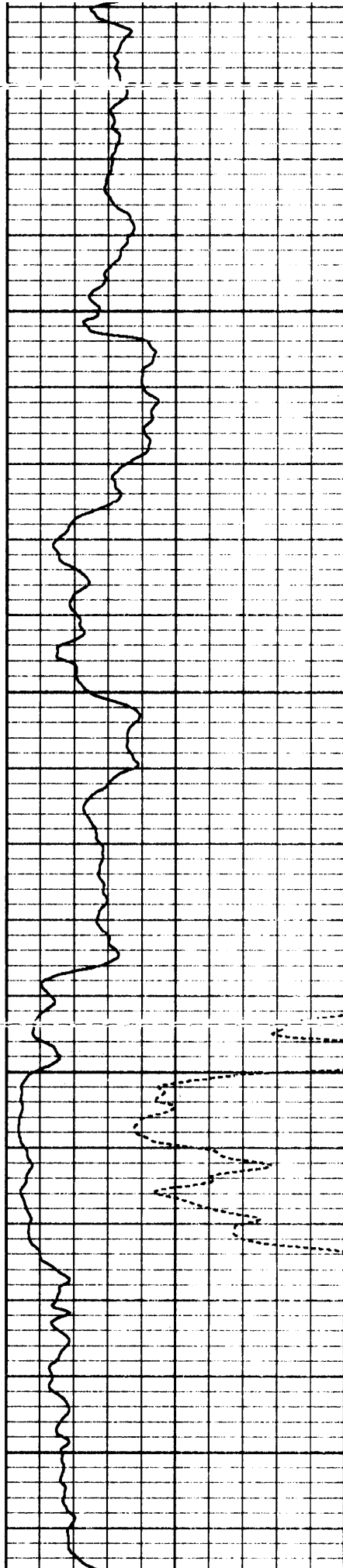


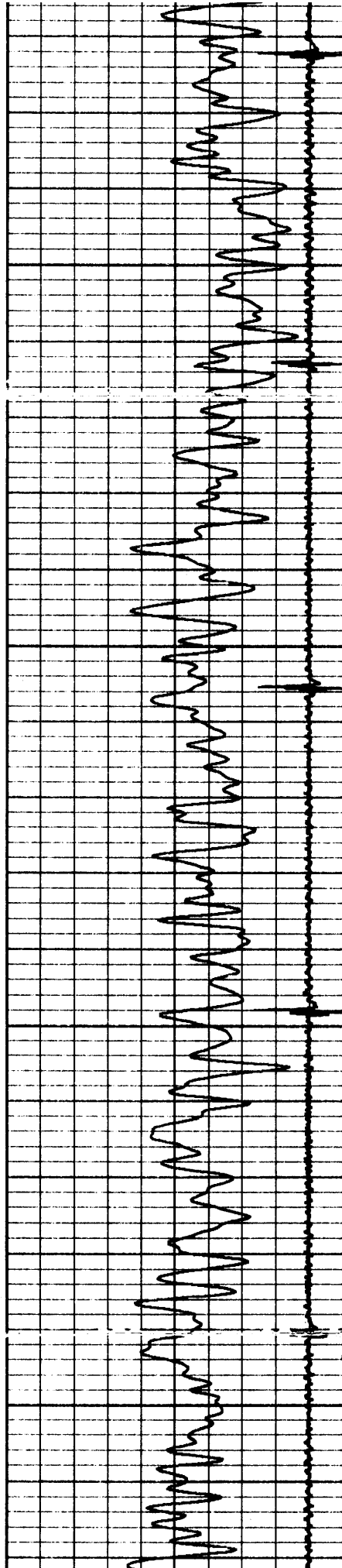
2600

2650

2700

2750



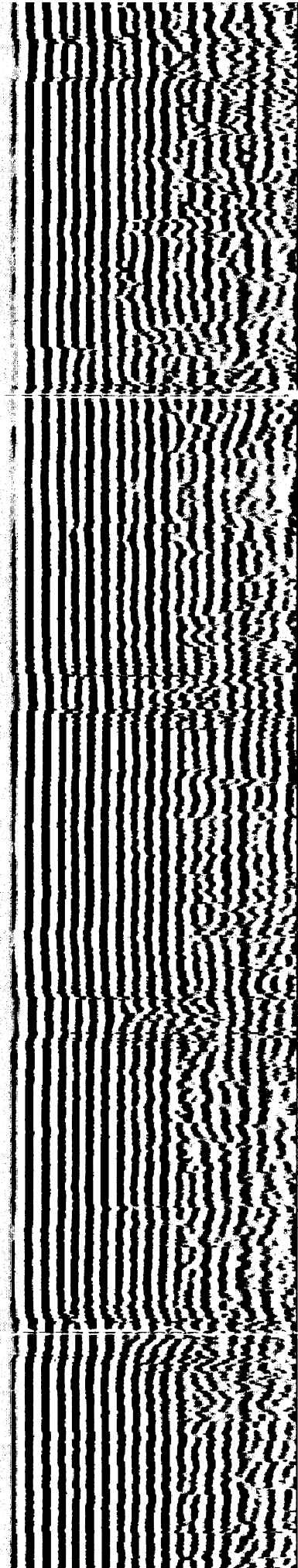
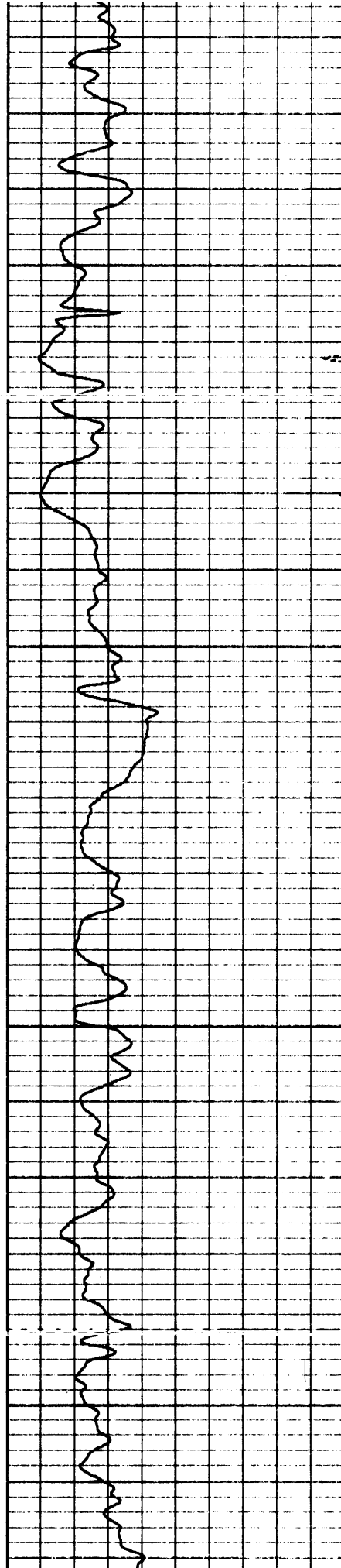


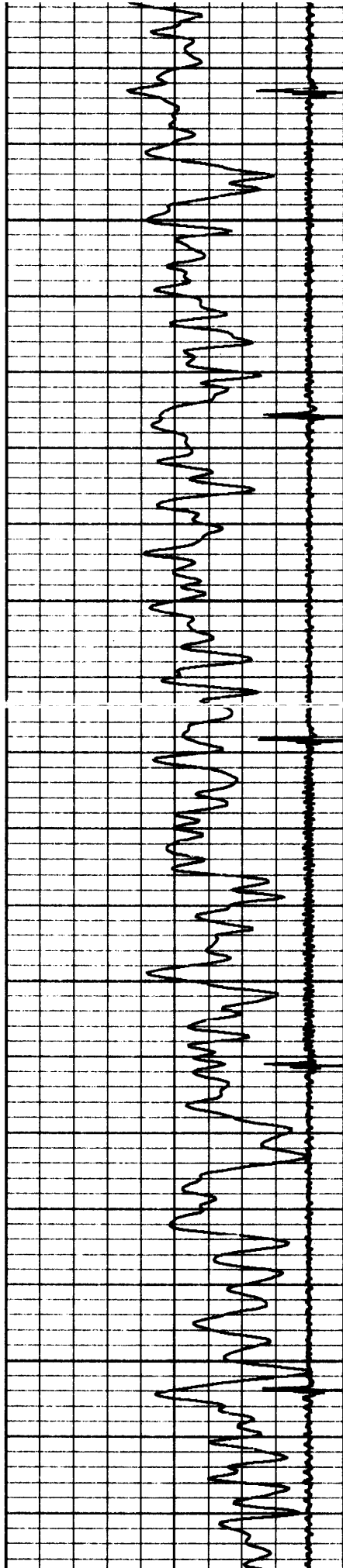
2800

2850

2900

2950



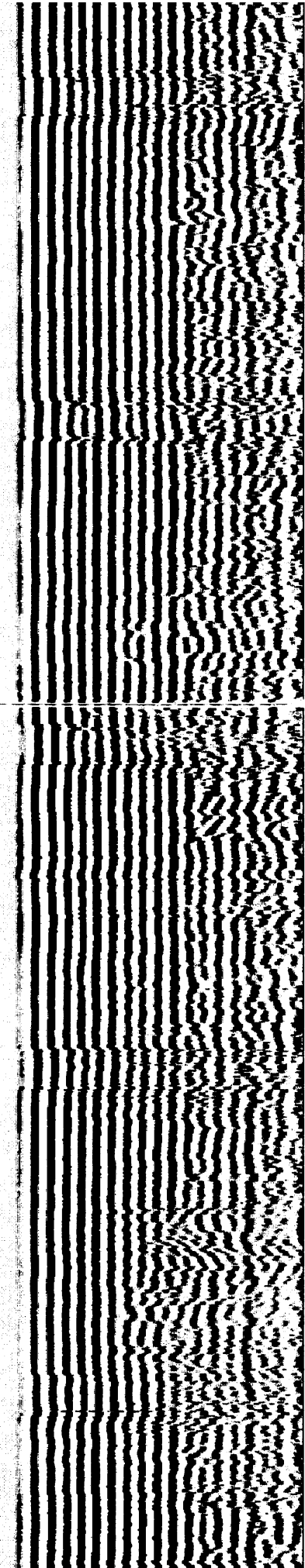
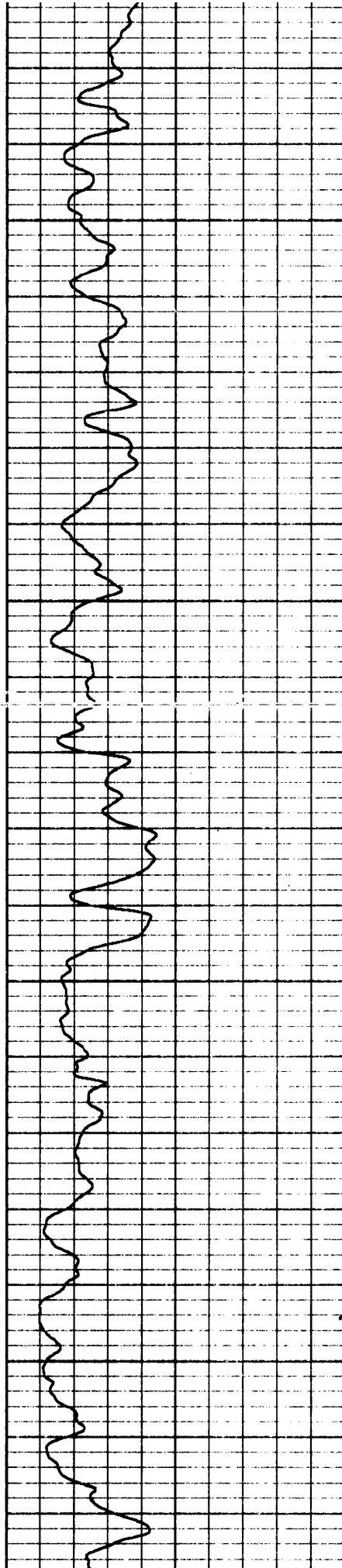


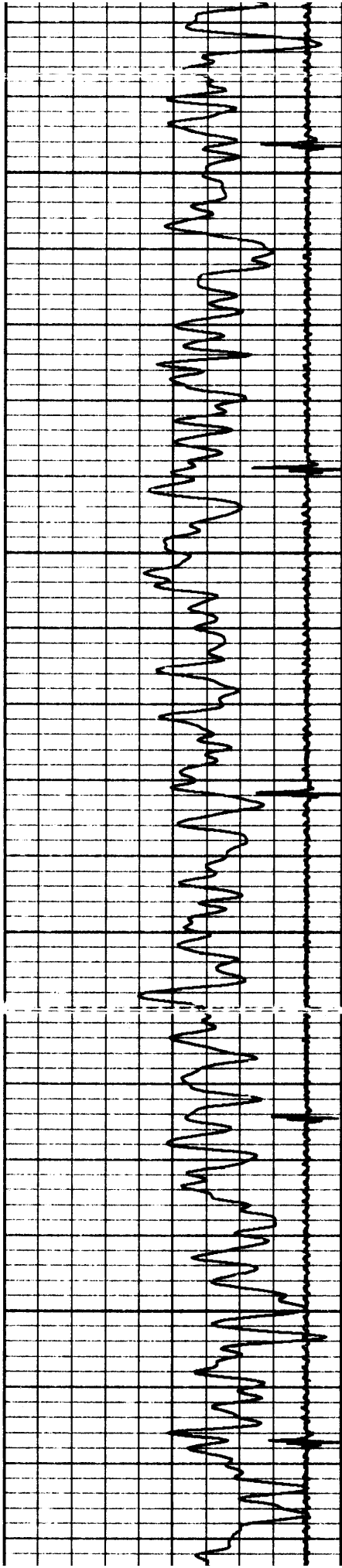
3000

3050

3100

3150



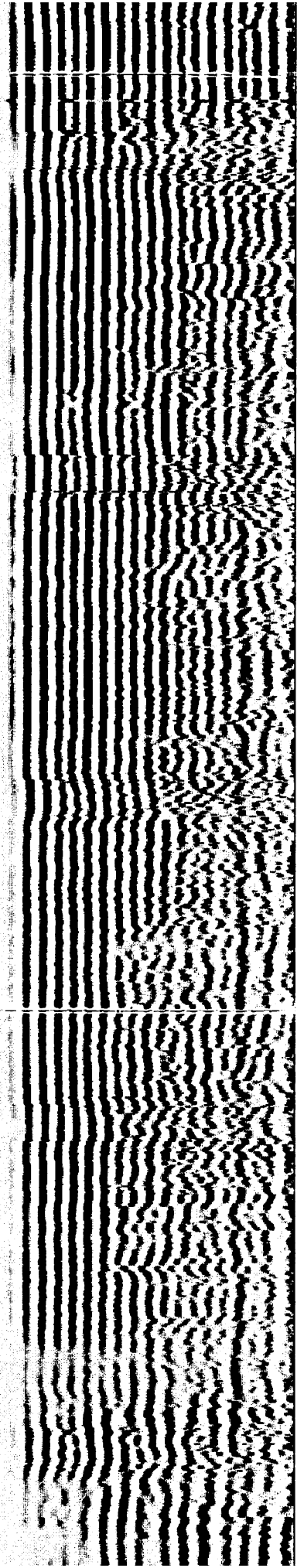
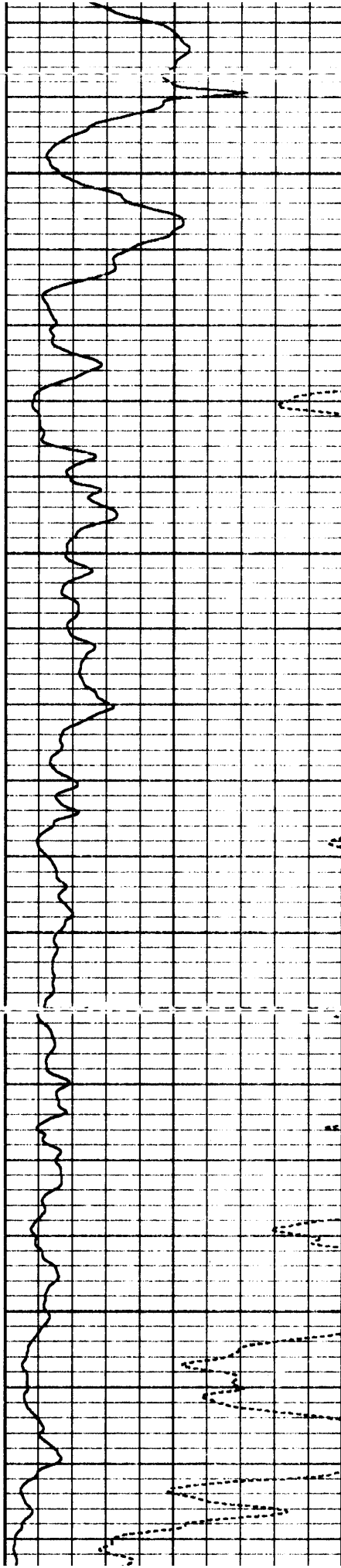


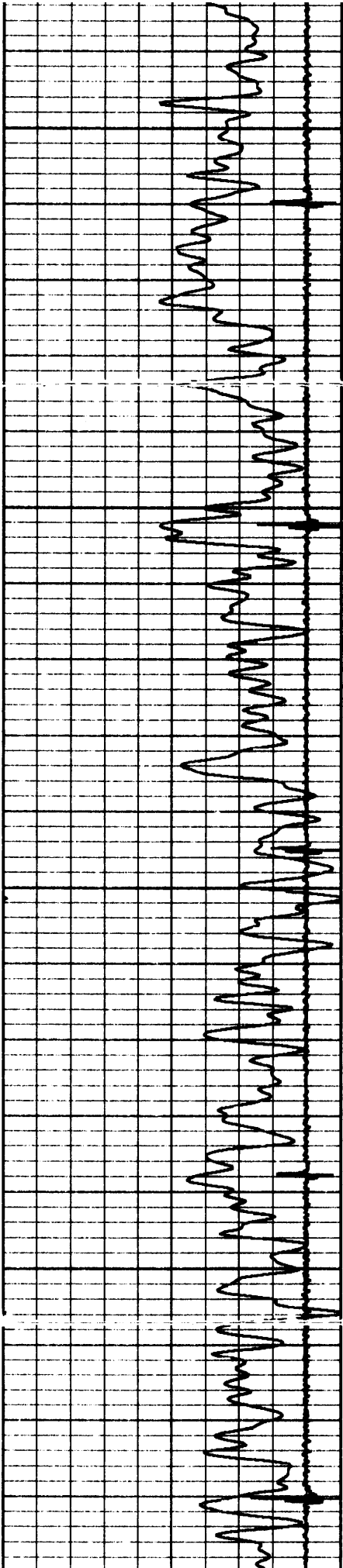
3200

3250

3300

3350



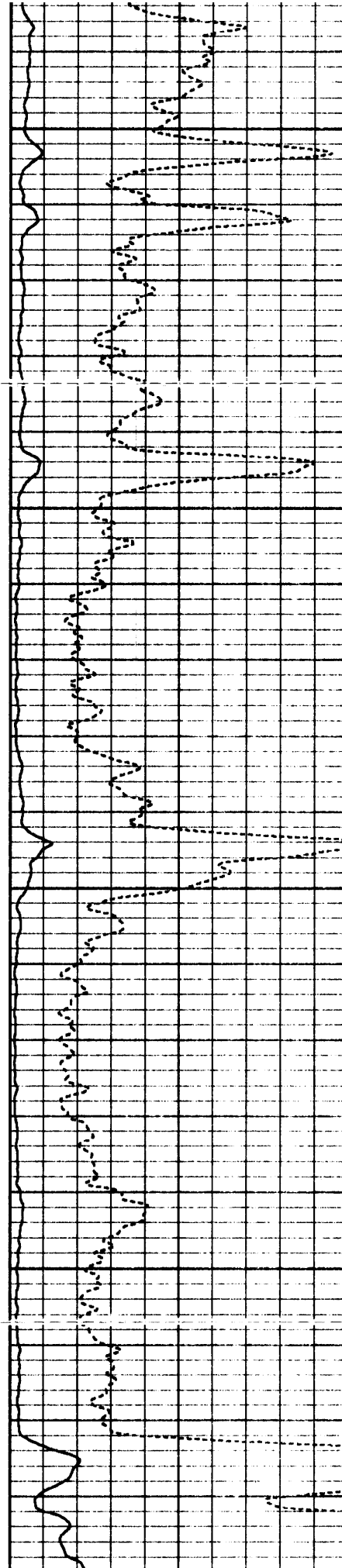


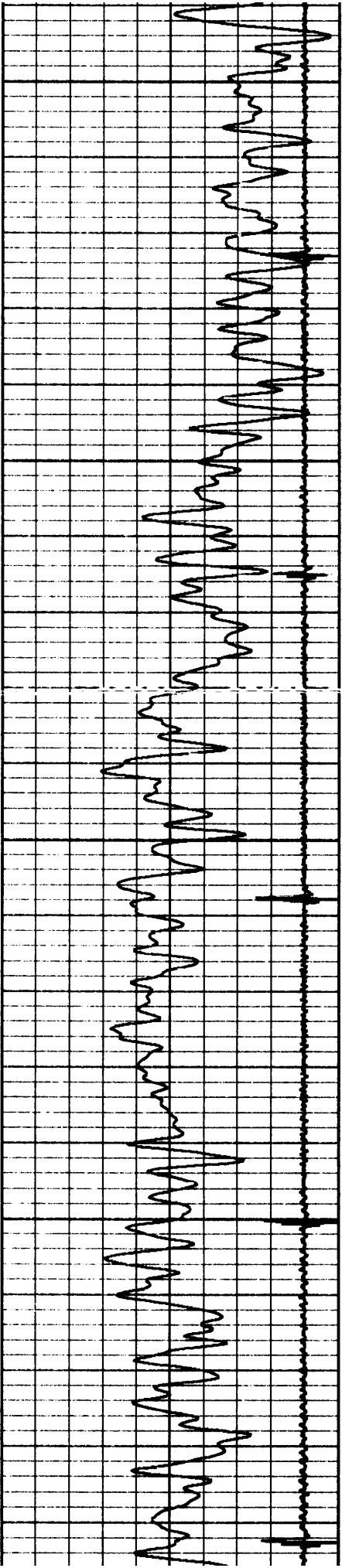
3400

3450

3500

3550



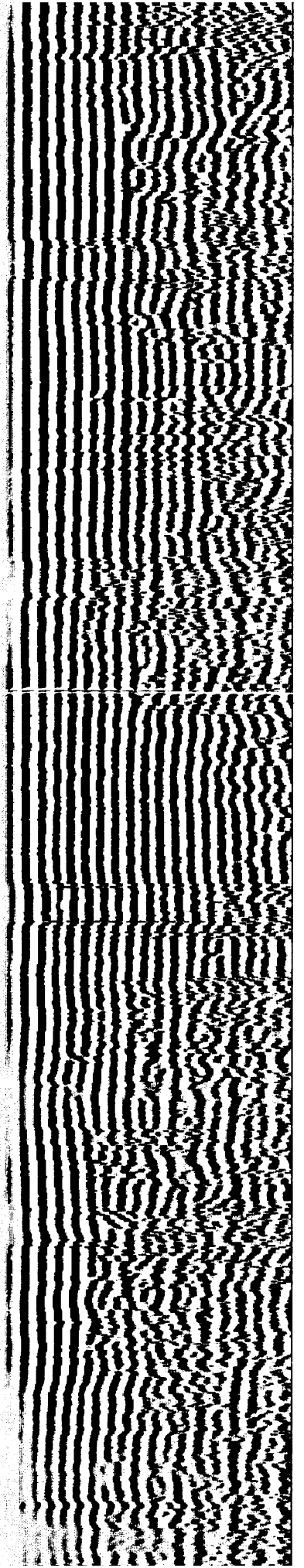
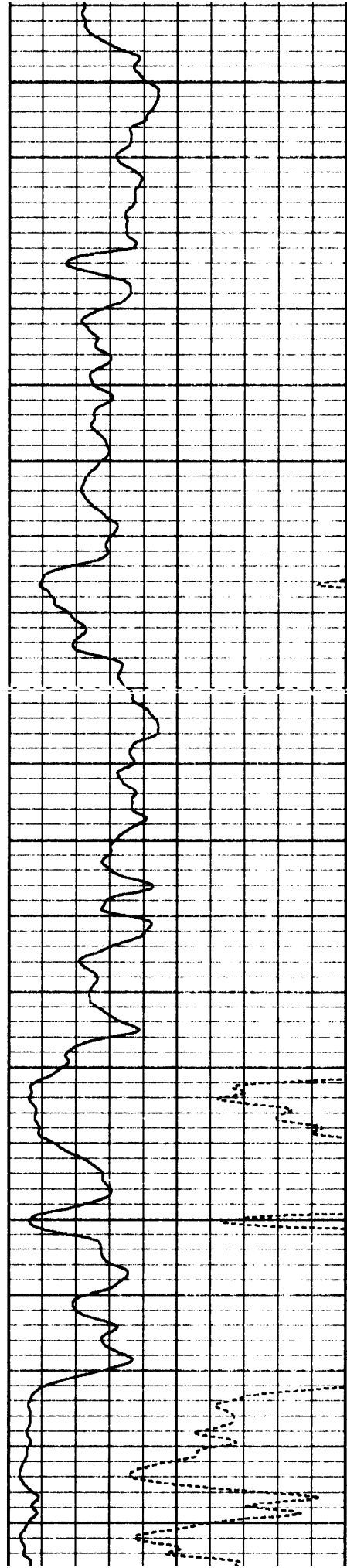


3600

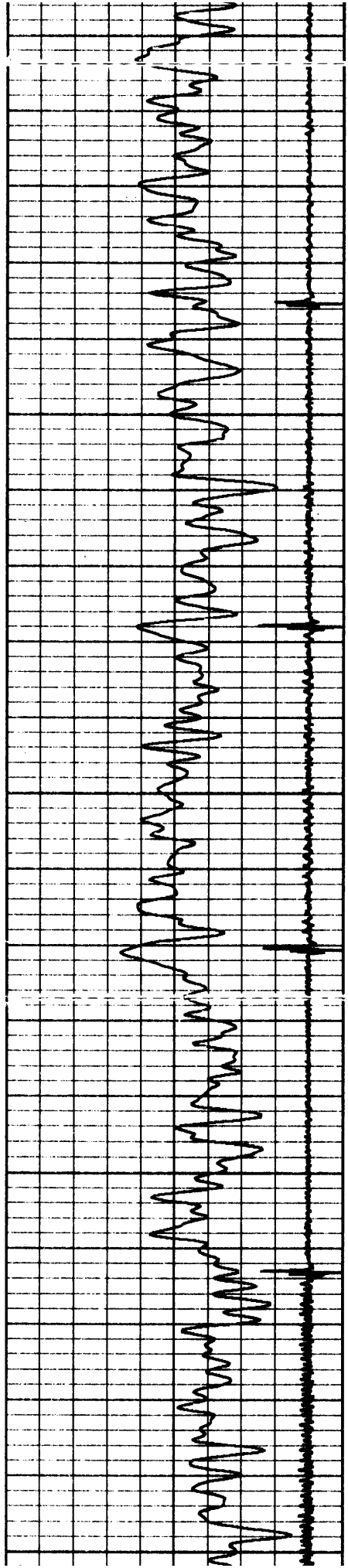
3650

3700

3750



3800 3850 3900 3950 4000



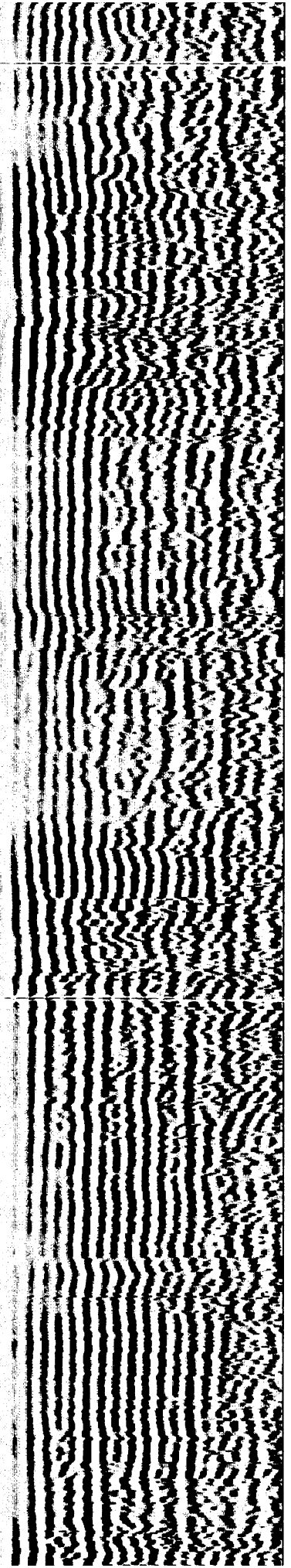
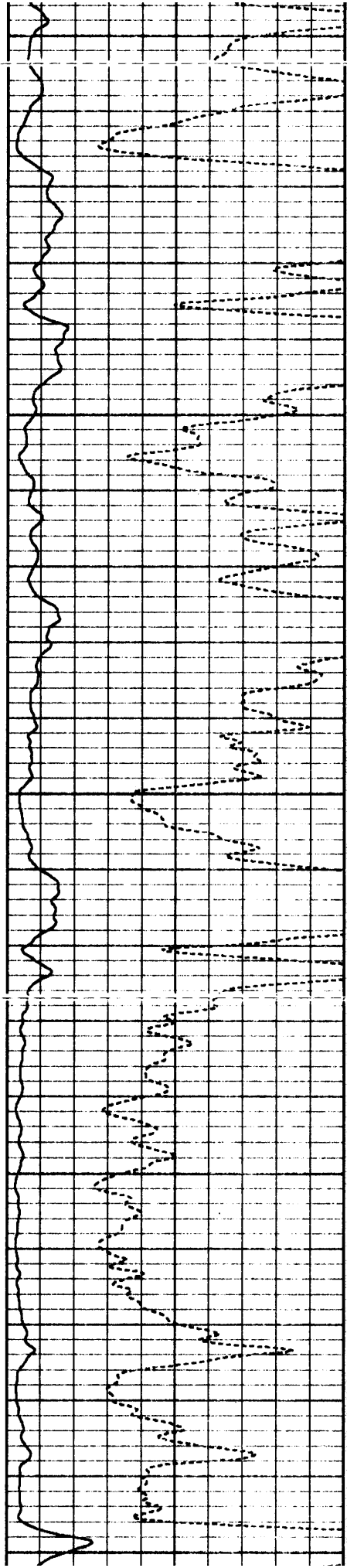
3800

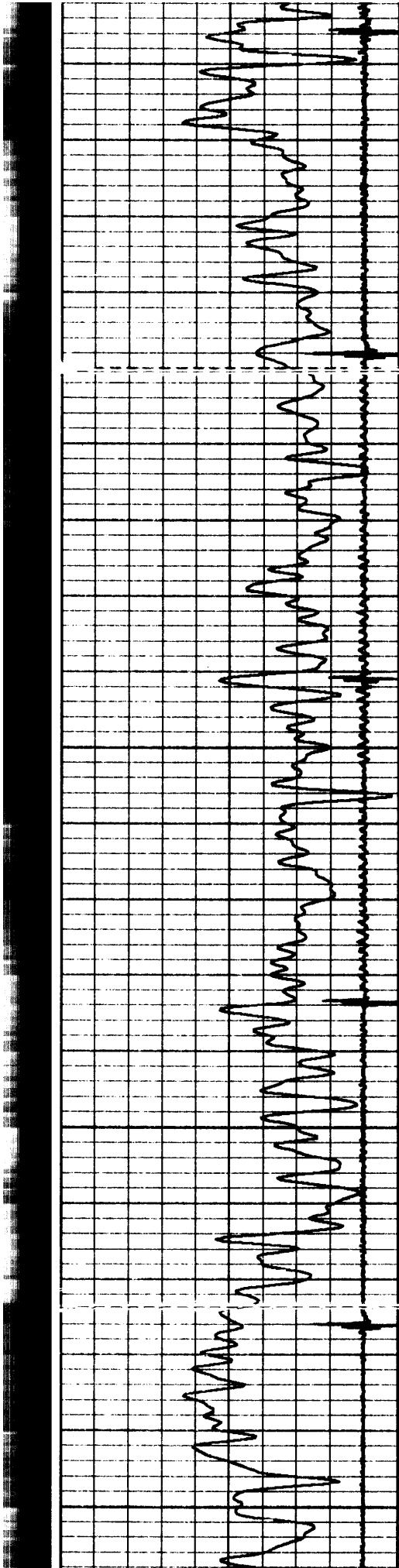
3850

3900

3950

4000



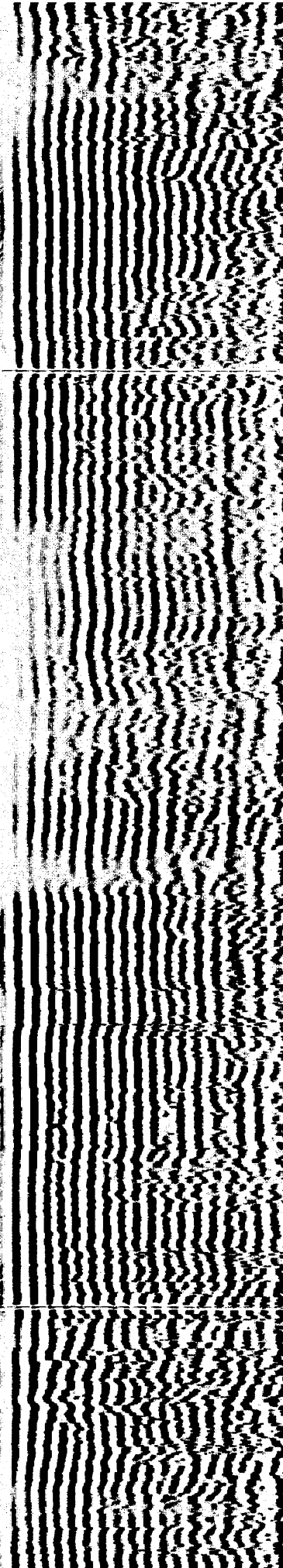
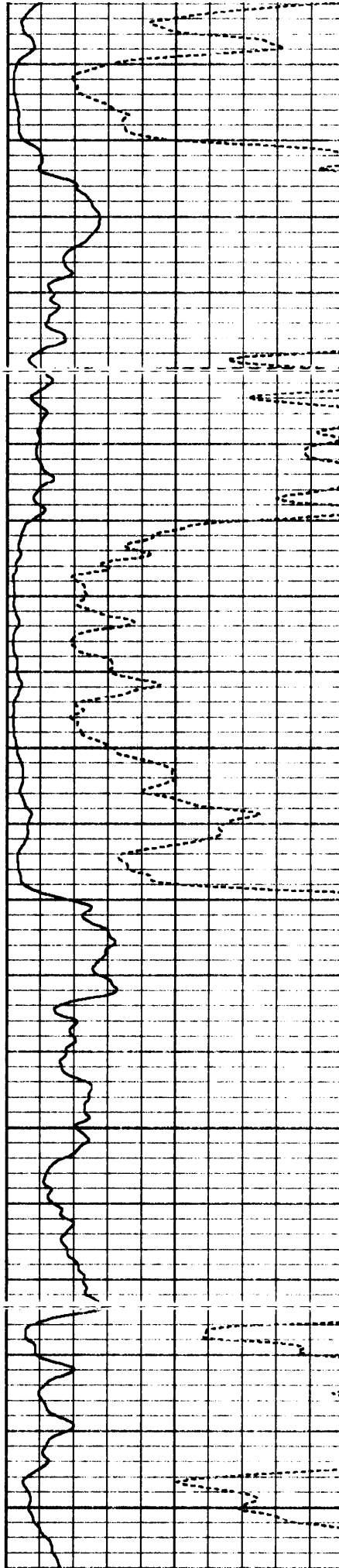


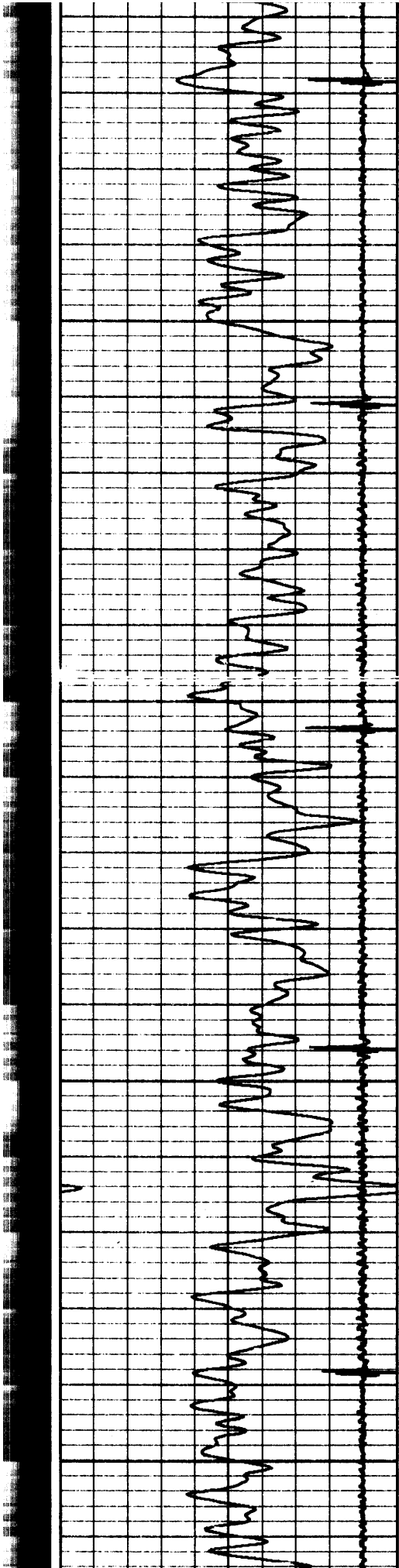
4050

4100

4150

4200



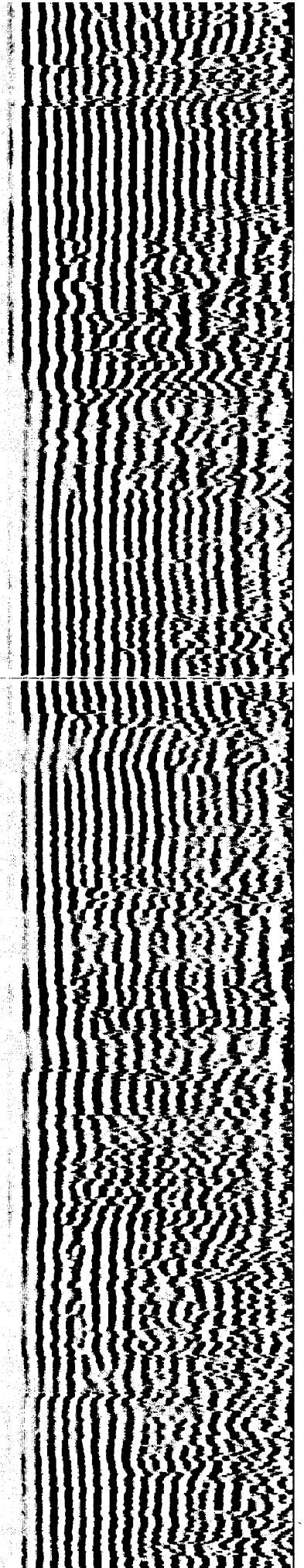
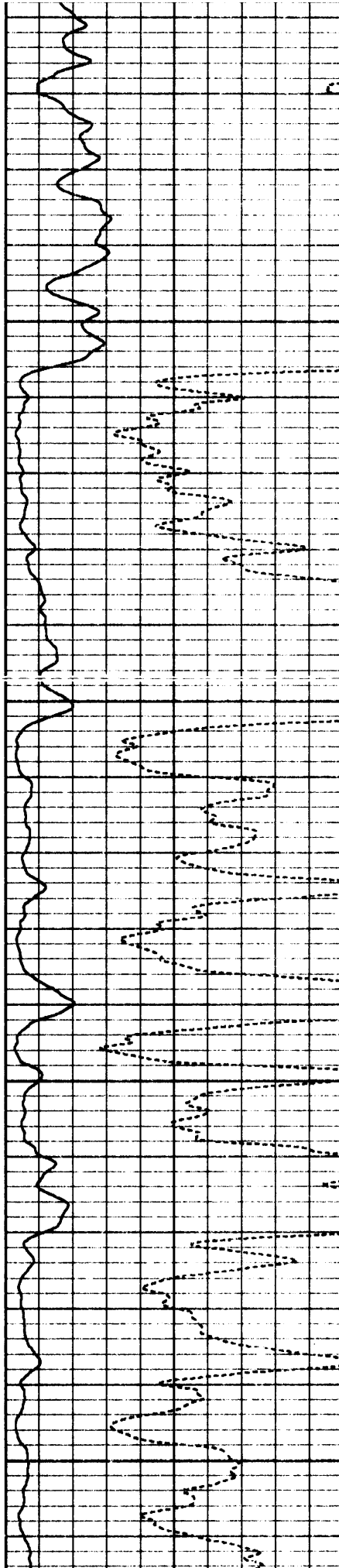


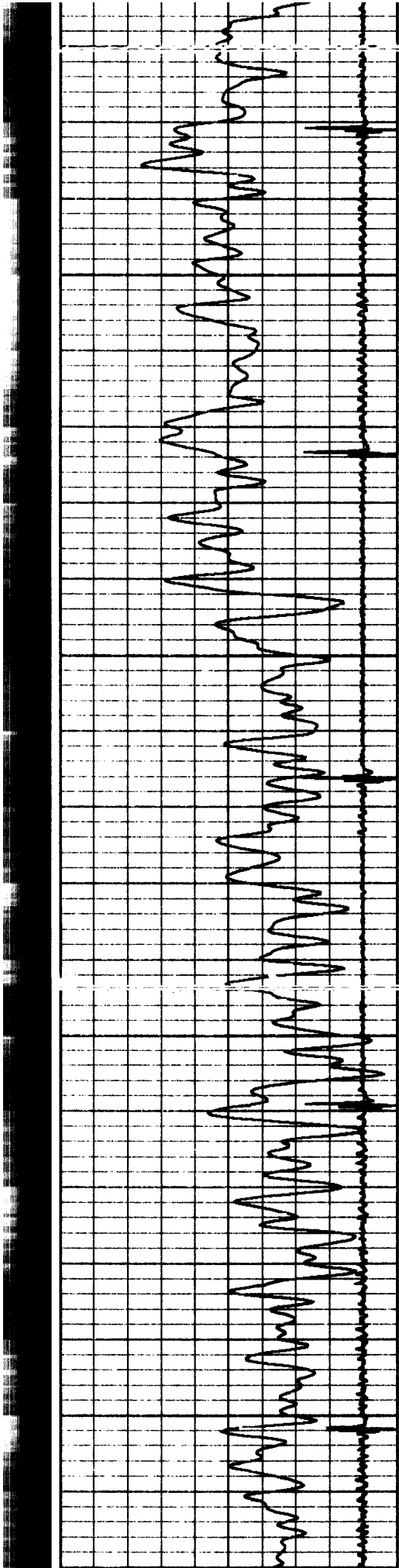
4250

4300

4350

4400



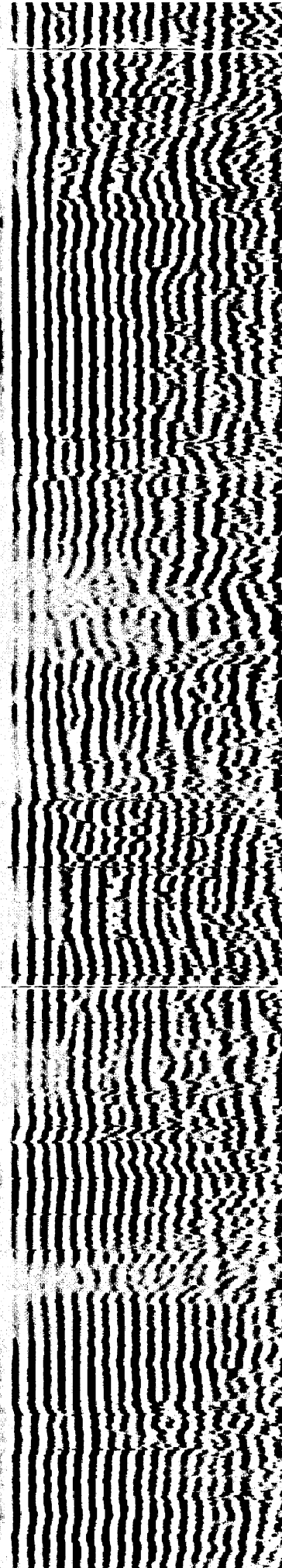
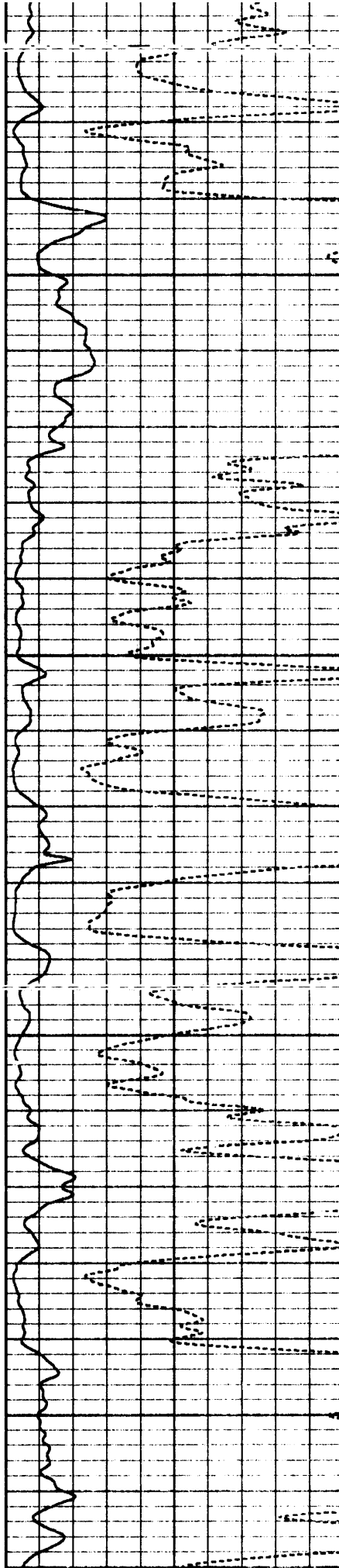


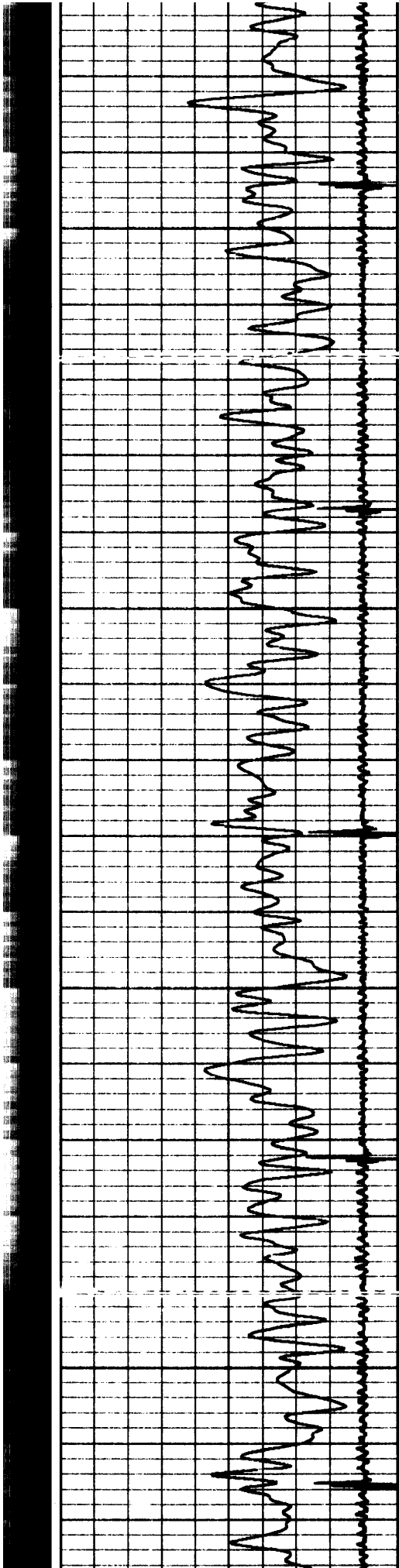
4450

4500

4550

4600



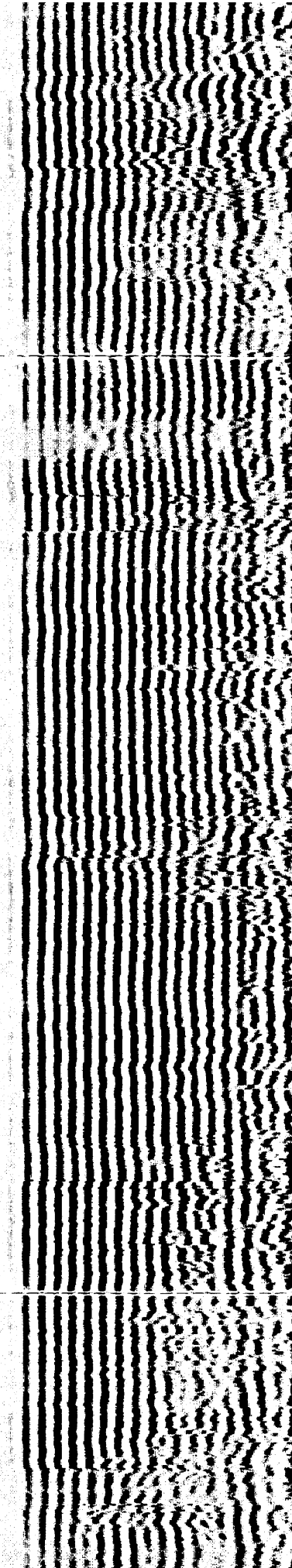
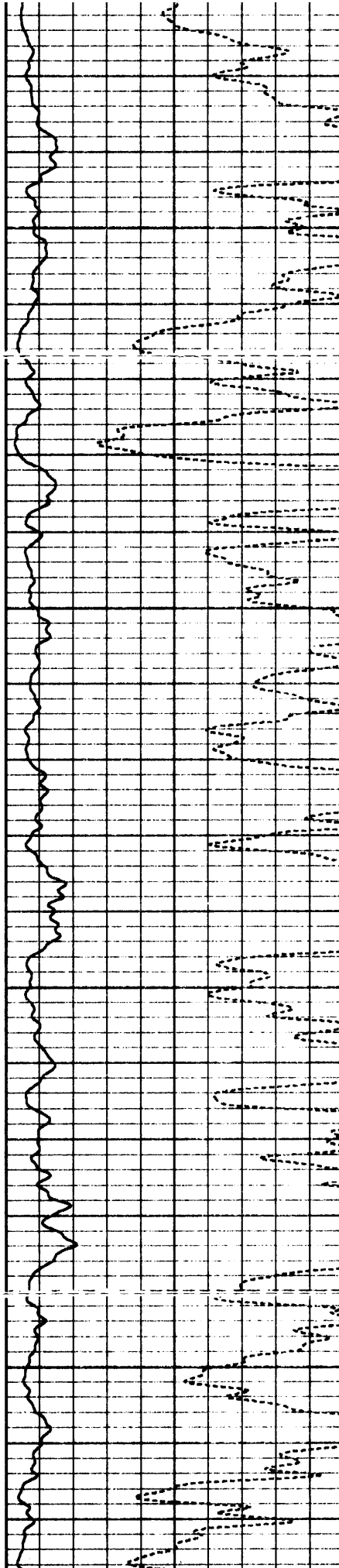


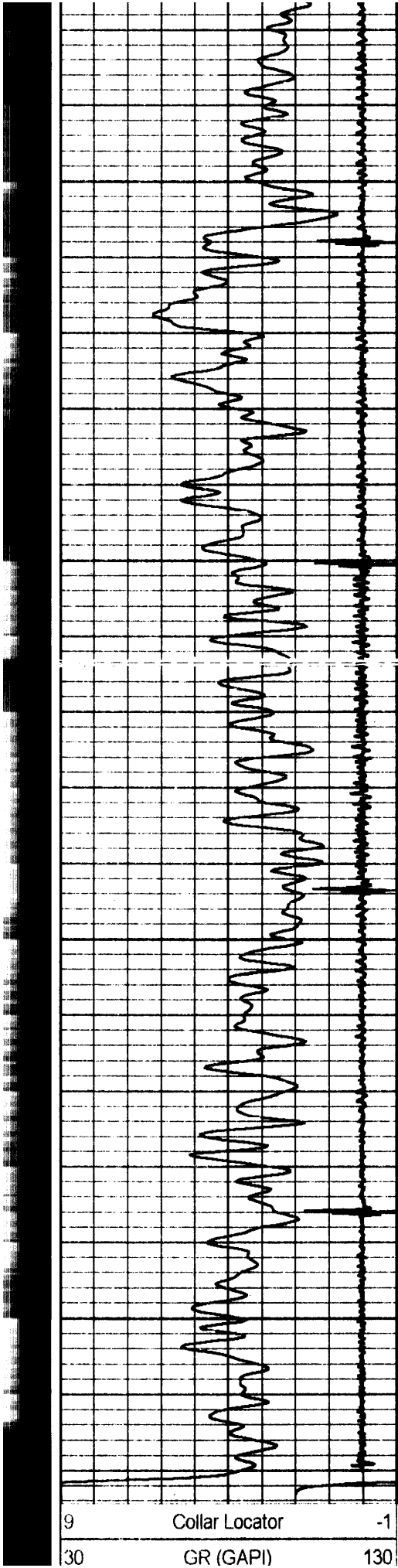
4650

4700

4750

4800



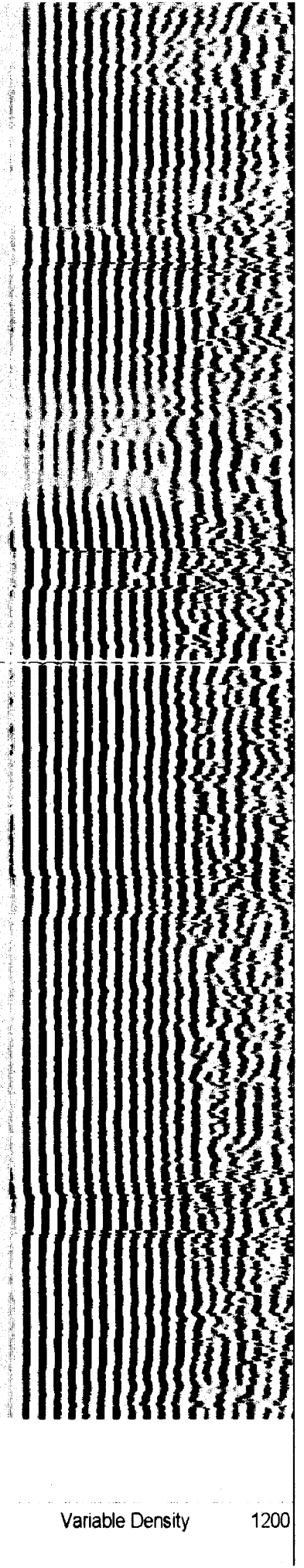
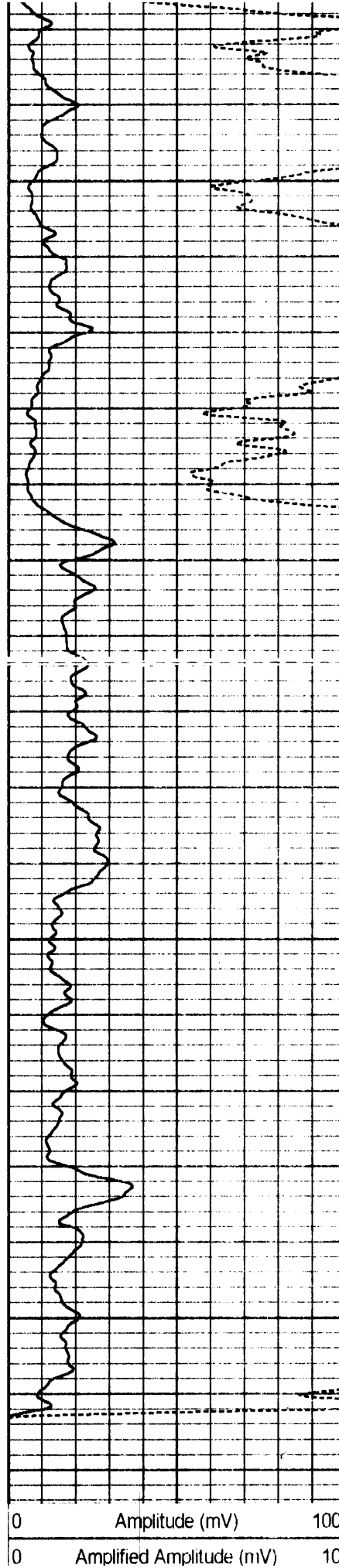


4850

4900

4950

5000



HALLIBURTON

Sussex Log

5"=100'

HALLIBURTON

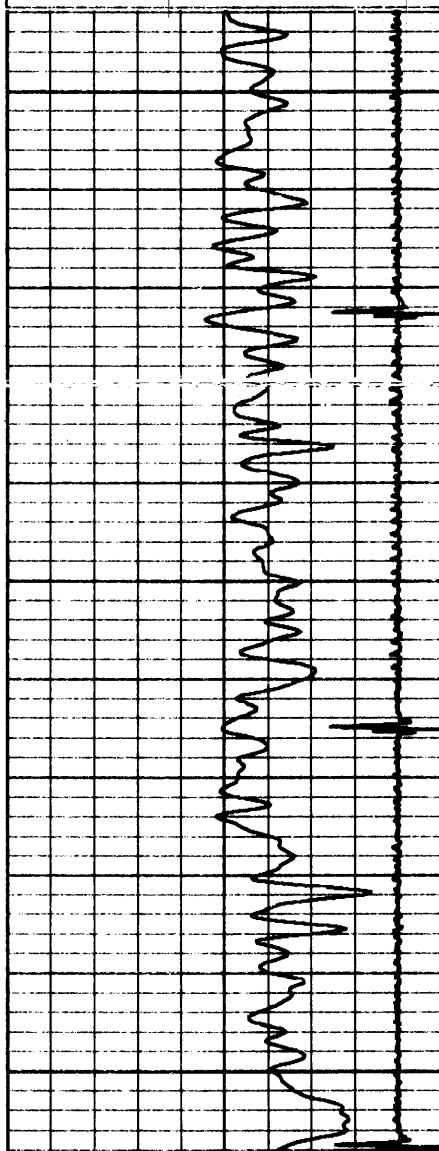
Main Log

5"=100'

Database File: noble schank j35-17.db
Dataset Pathname: pass1
Presentation Format: cblidig
Dataset Creation: Tue Jan 15 15:21:36 2008 by Log Halliburton Casedho
Charted by: Depth in Feet scaled 1:240

9	Collar Locator	-1
0	GR (GAPI)	150

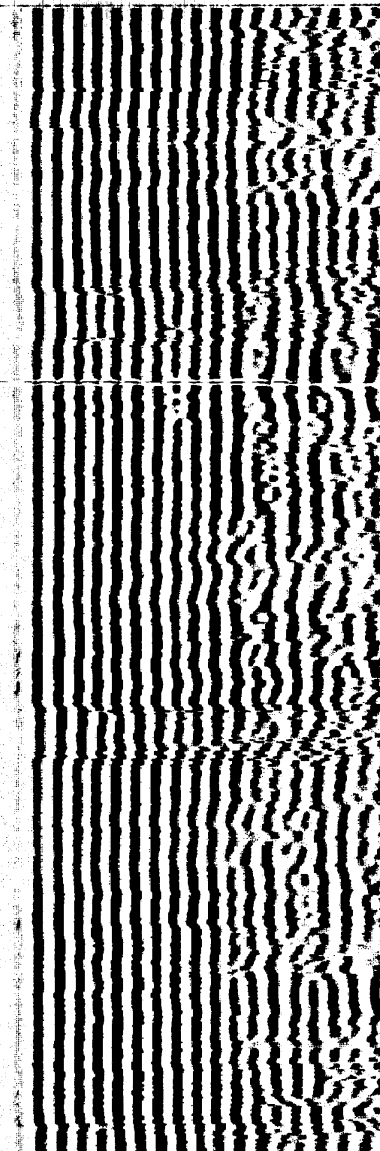
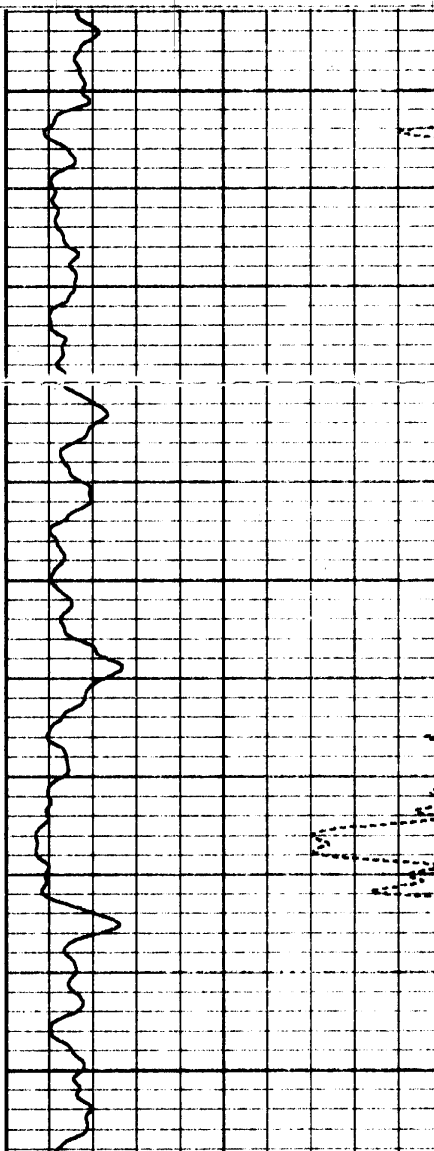
0	Amplitude (mV)	100	200	Variable Density	1200
0	Amplified Amplitude (mV)	10			

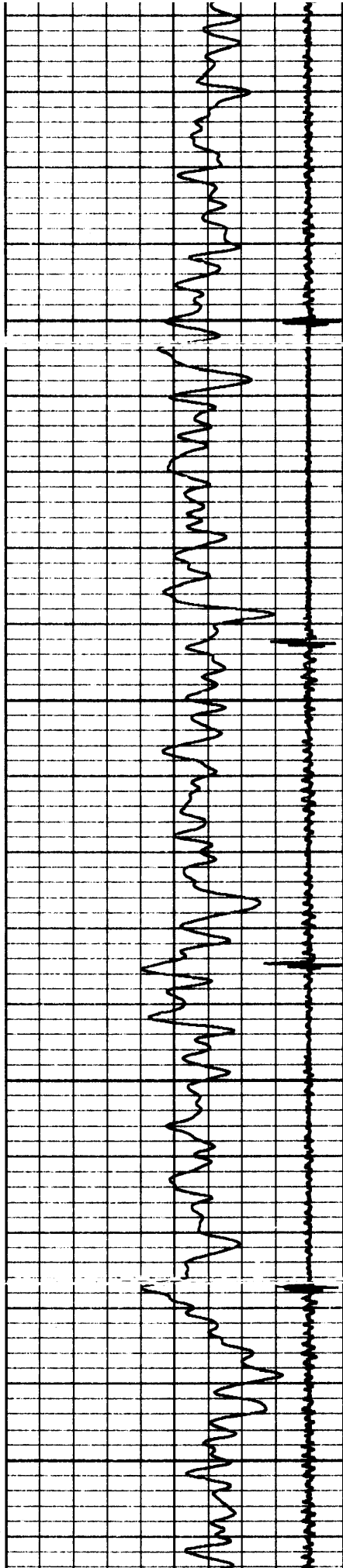
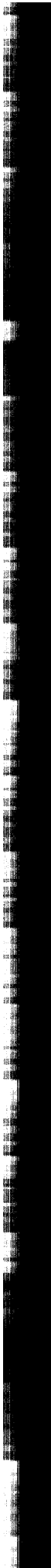


5000

5050

5100



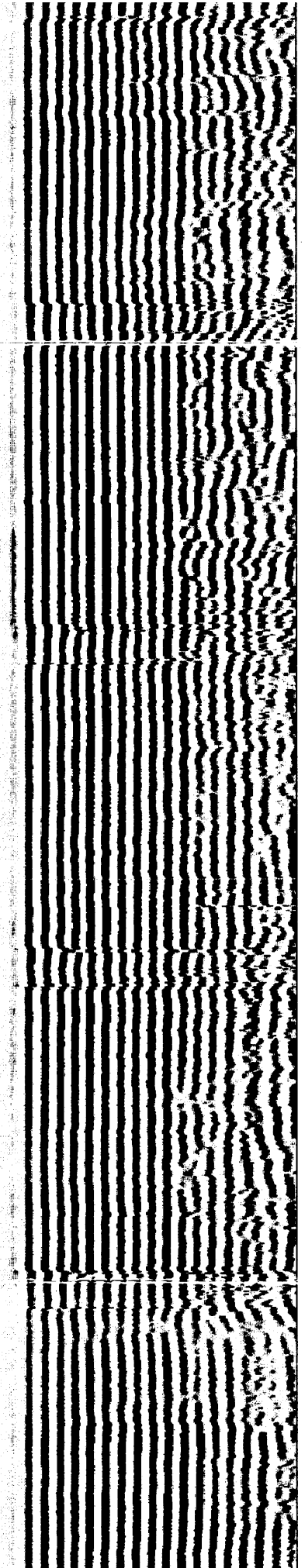
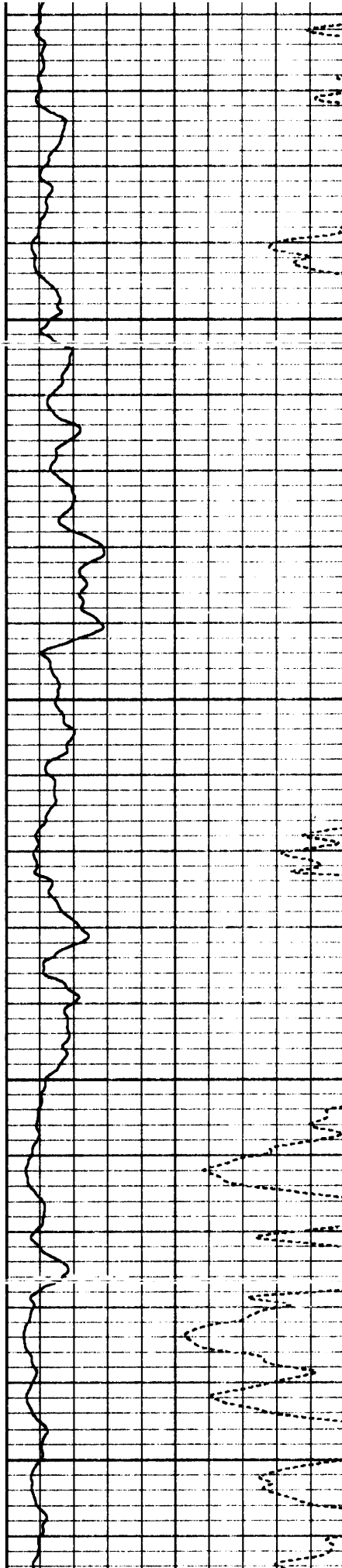


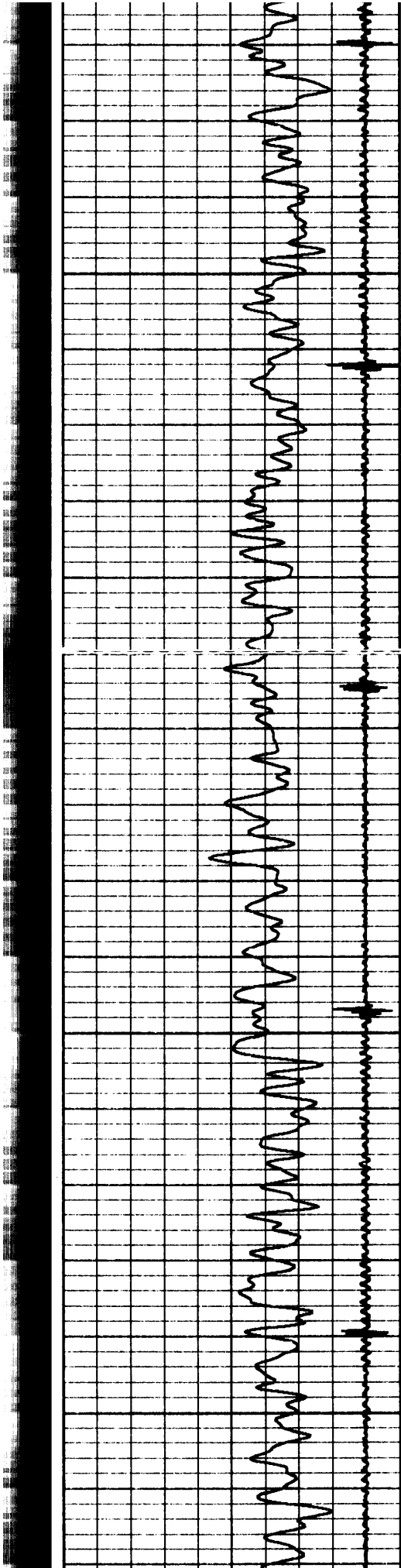
5150

5200

5250

5300



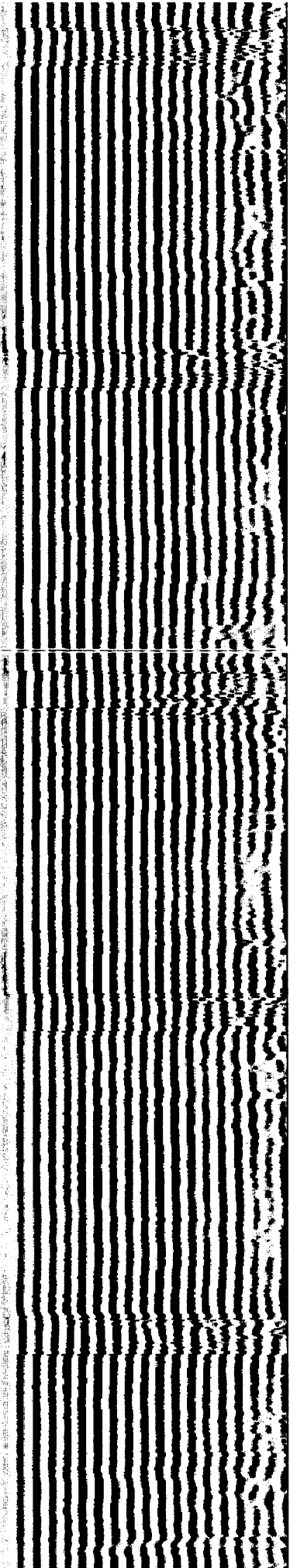
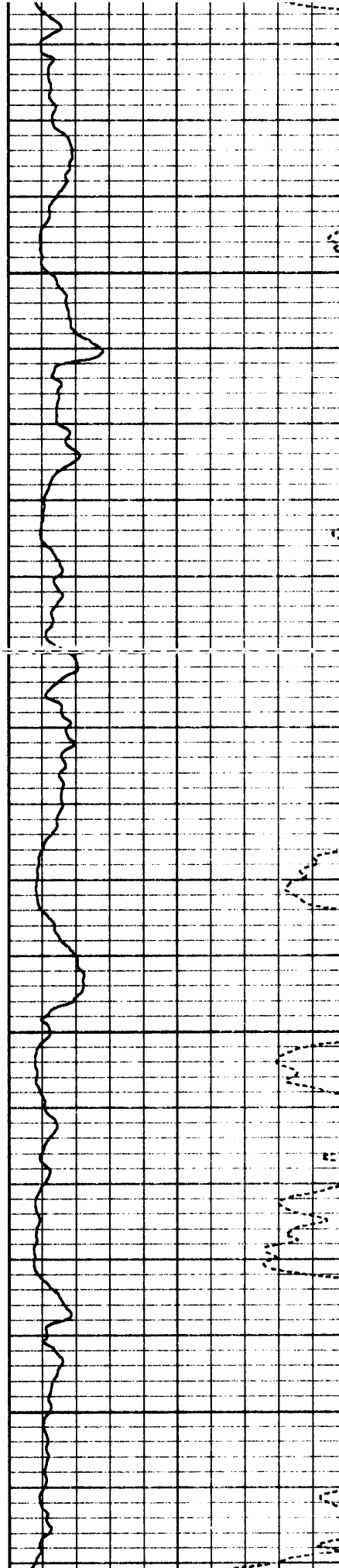


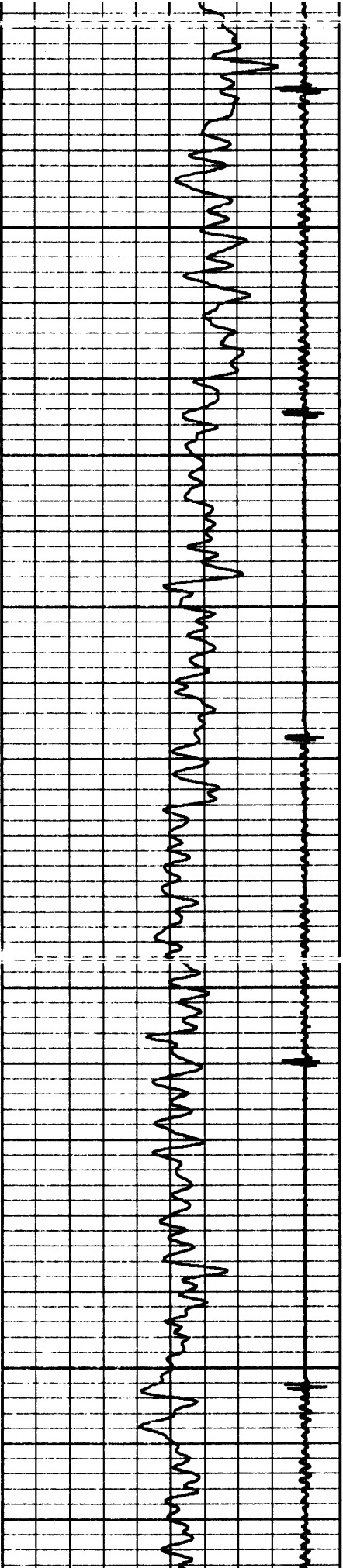
5350

5400

5450

5500



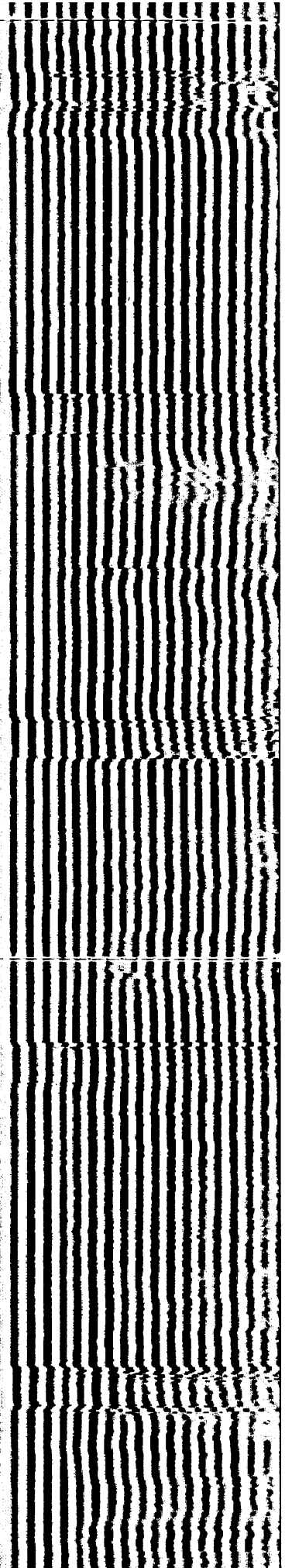
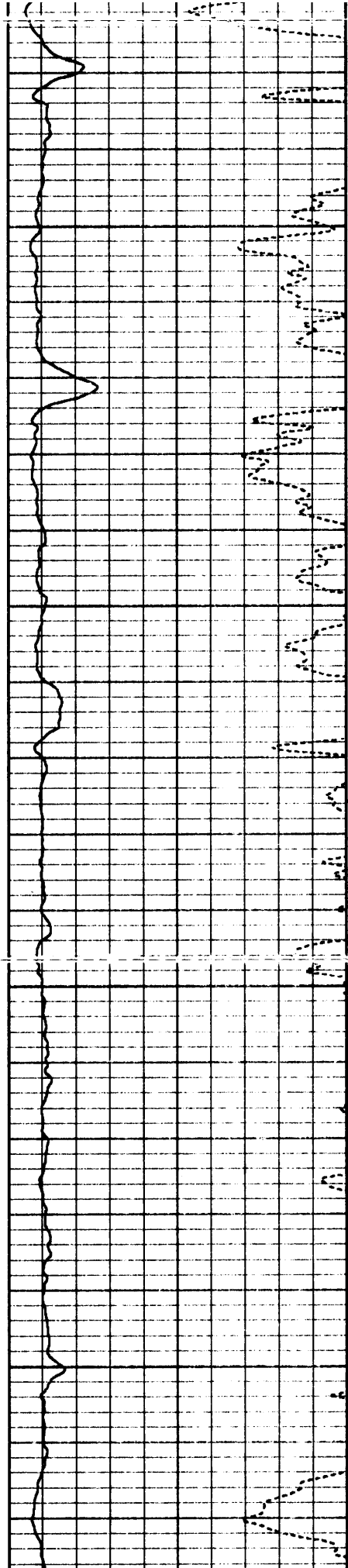


5550

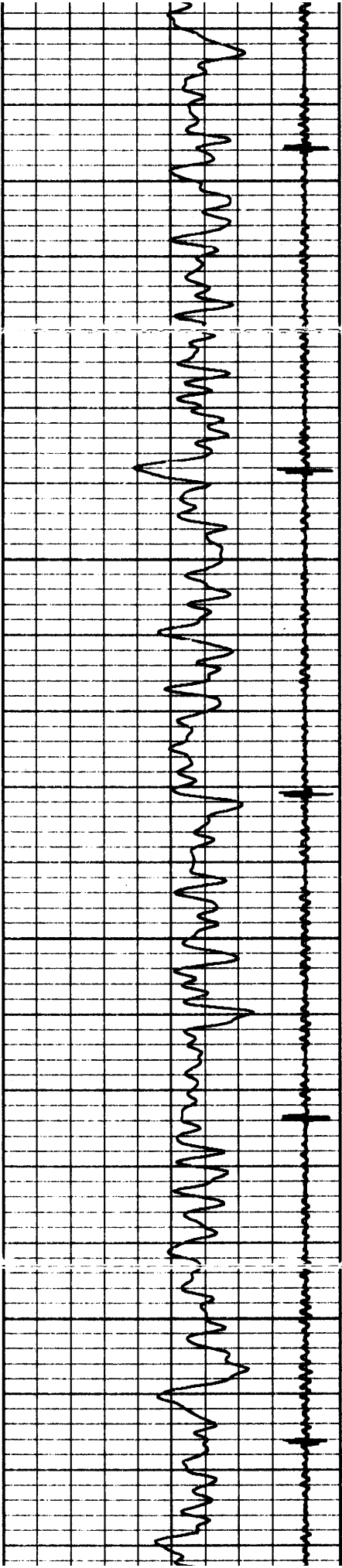
5600

5650

5700



1000
1100
1200
1300
1400
1500
1600
1700
1800
1900
2000
2100
2200
2300
2400
2500
2600
2700
2800
2900
3000
3100
3200
3300
3400
3500
3600
3700
3800
3900
4000
4100
4200
4300
4400
4500
4600
4700
4800
4900
5000
5100
5200
5300
5400
5500
5600
5700
5800
5900
6000
6100
6200
6300
6400
6500
6600
6700
6800
6900
7000
7100
7200
7300
7400
7500
7600
7700
7800
7900
8000
8100
8200
8300
8400
8500
8600
8700
8800
8900
9000
9100
9200
9300
9400
9500
9600
9700
9800
9900
10000

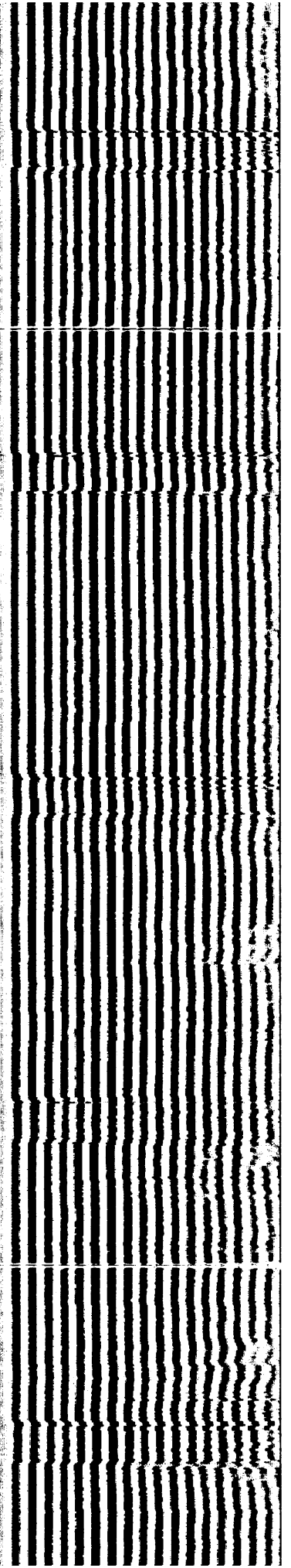
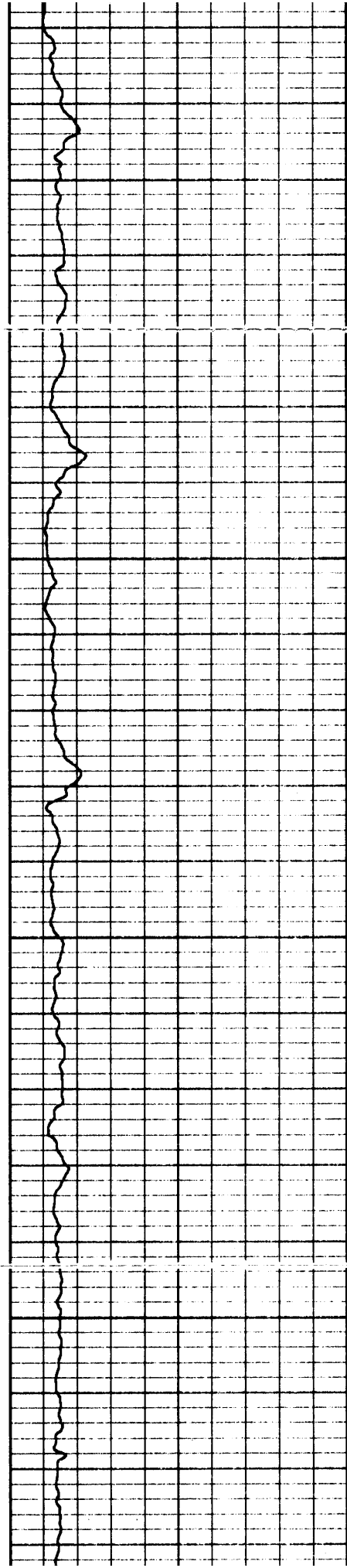


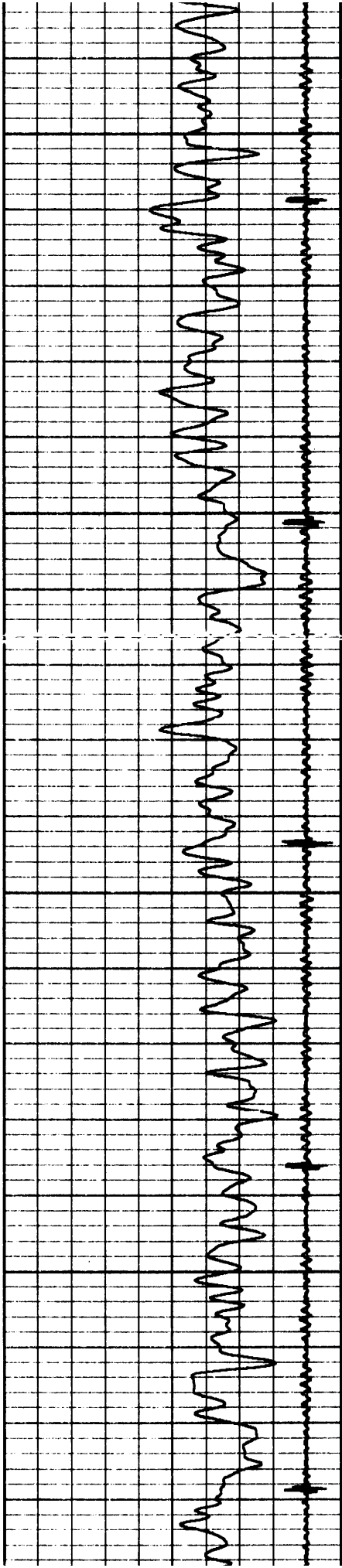
5750

5800

5850

5900



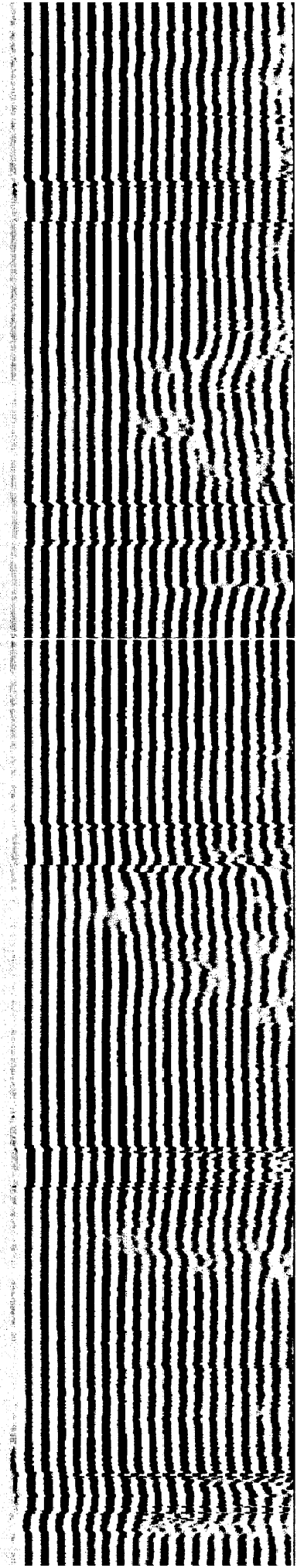
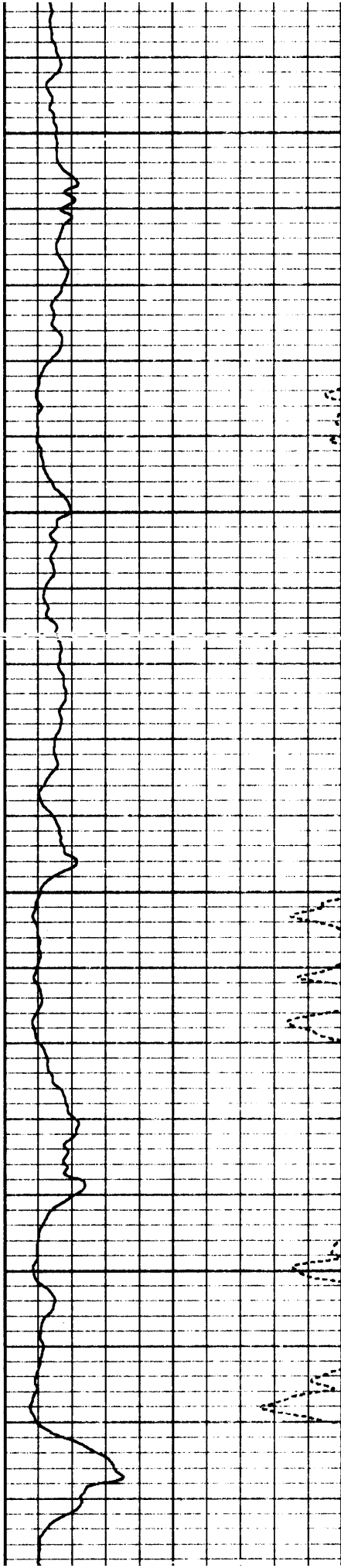


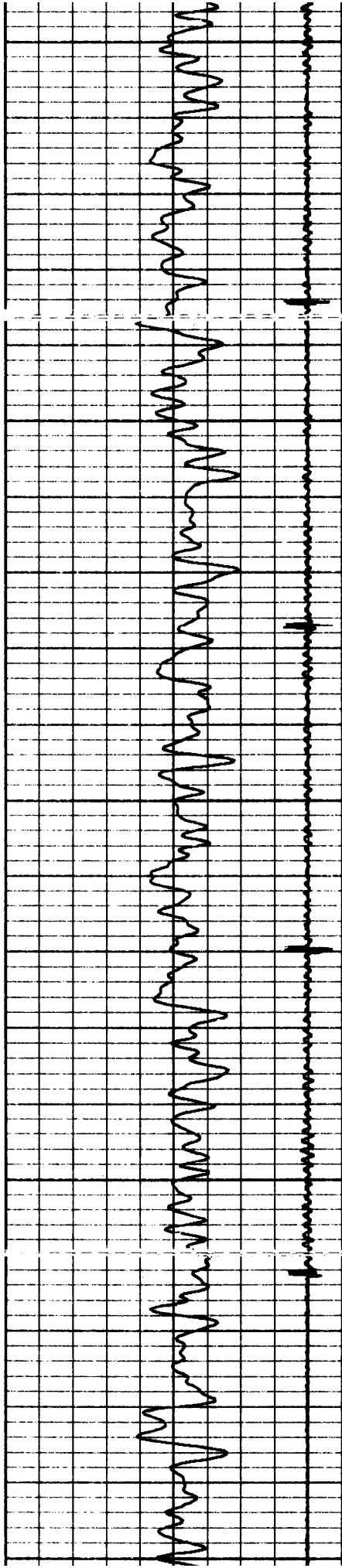
5950

6000

6050

6100





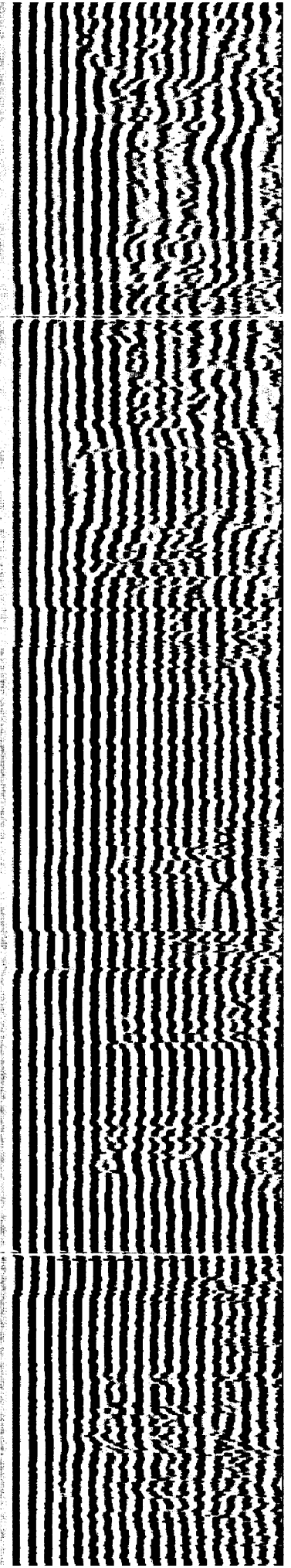
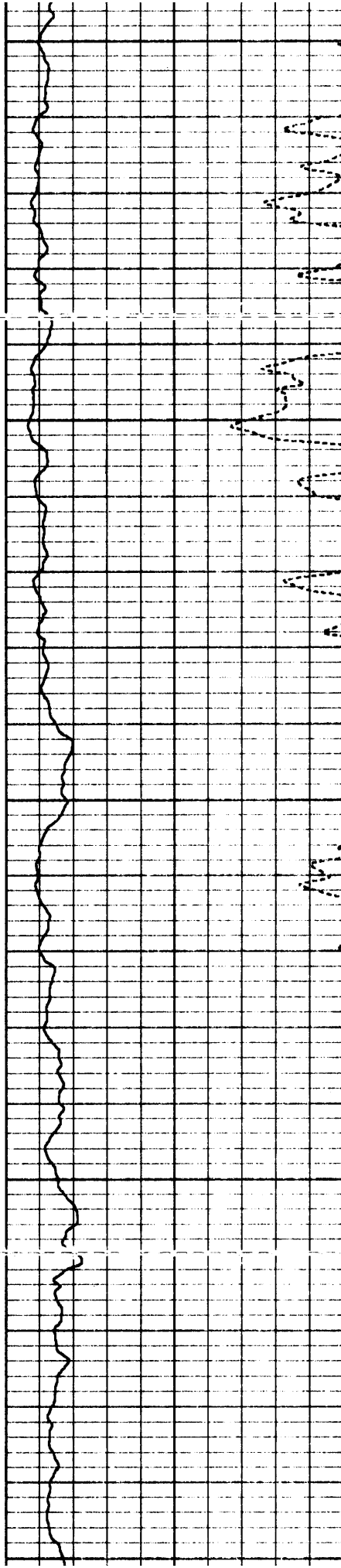
6350

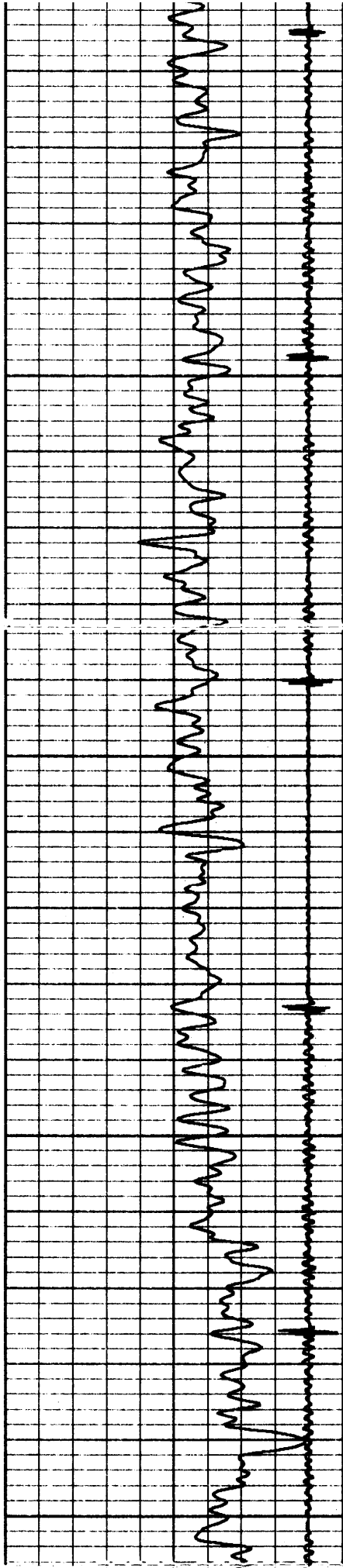
6400

6450

6500

6550



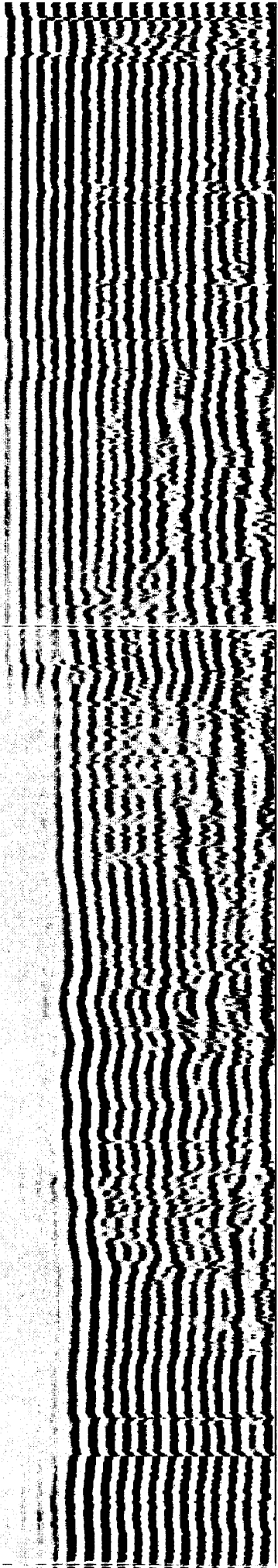
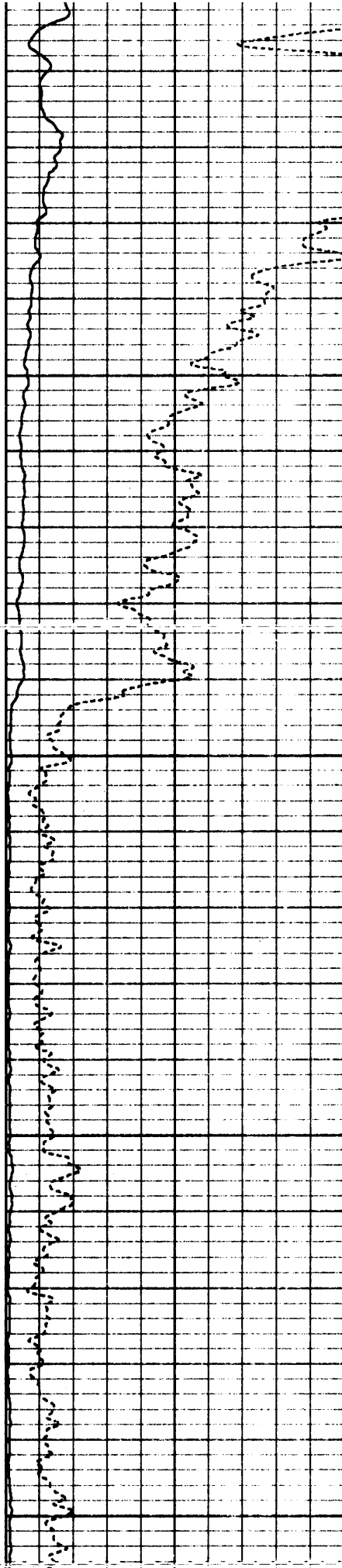


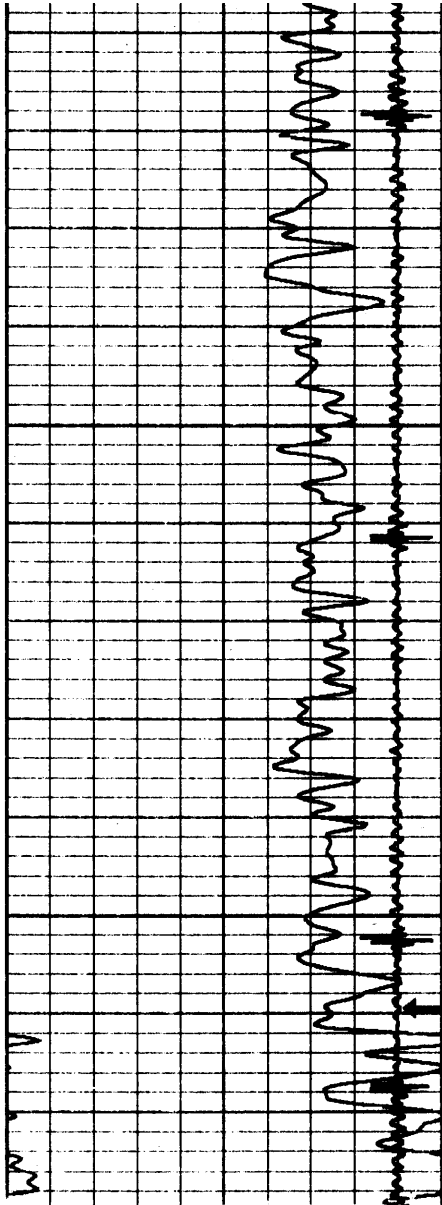
6600

6650

6700

6750

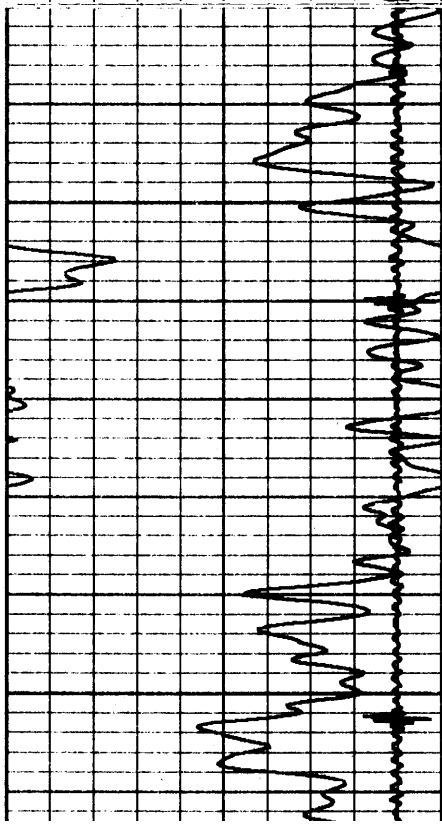




6800

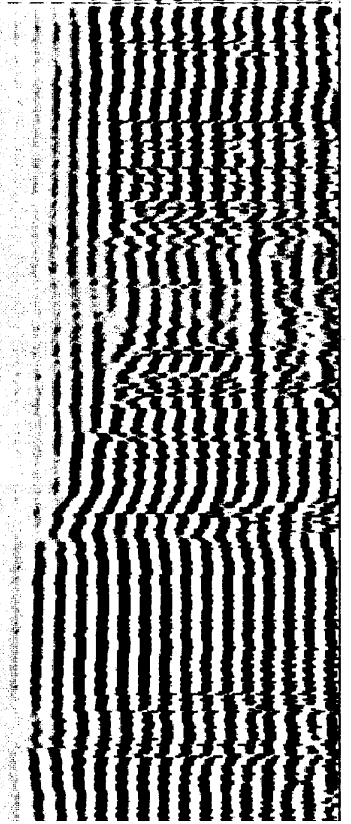
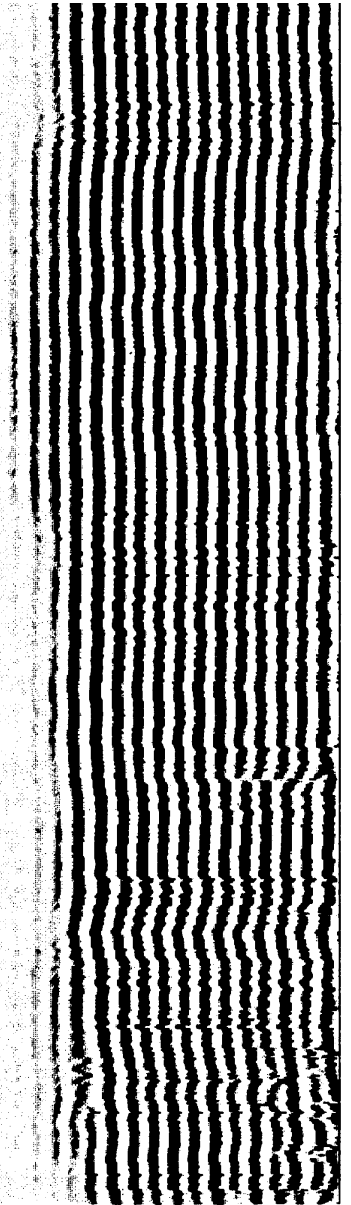
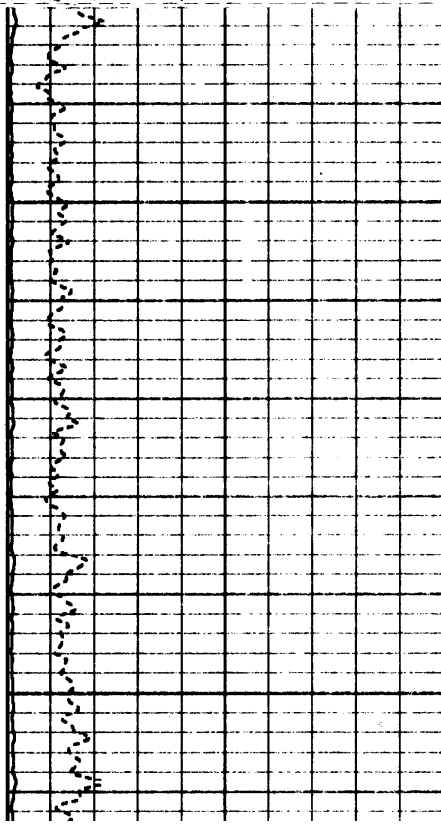
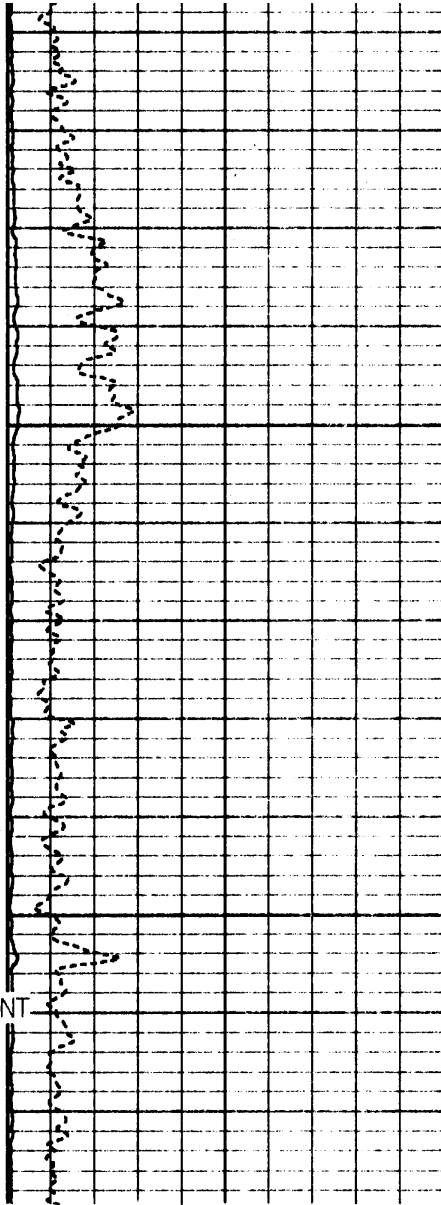
6850

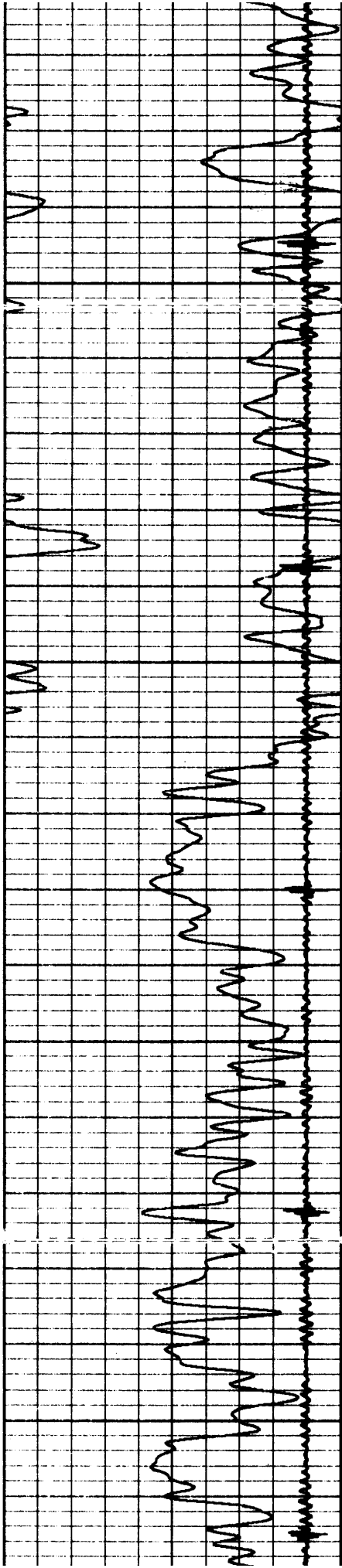
SHORT JOINT



6900

6950



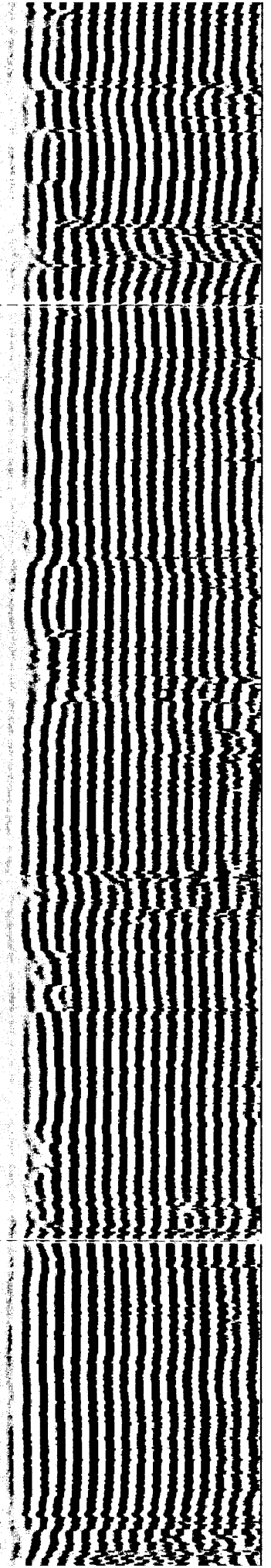
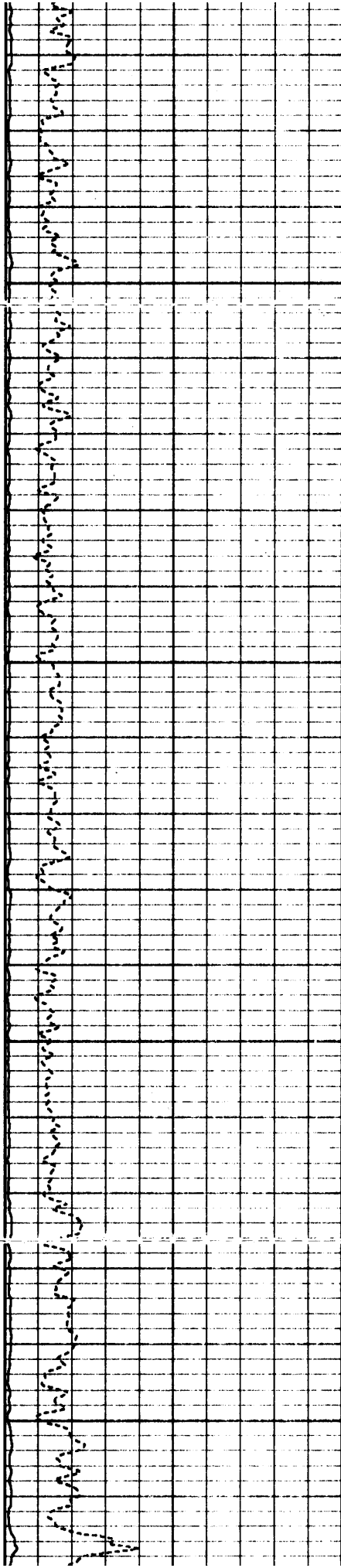


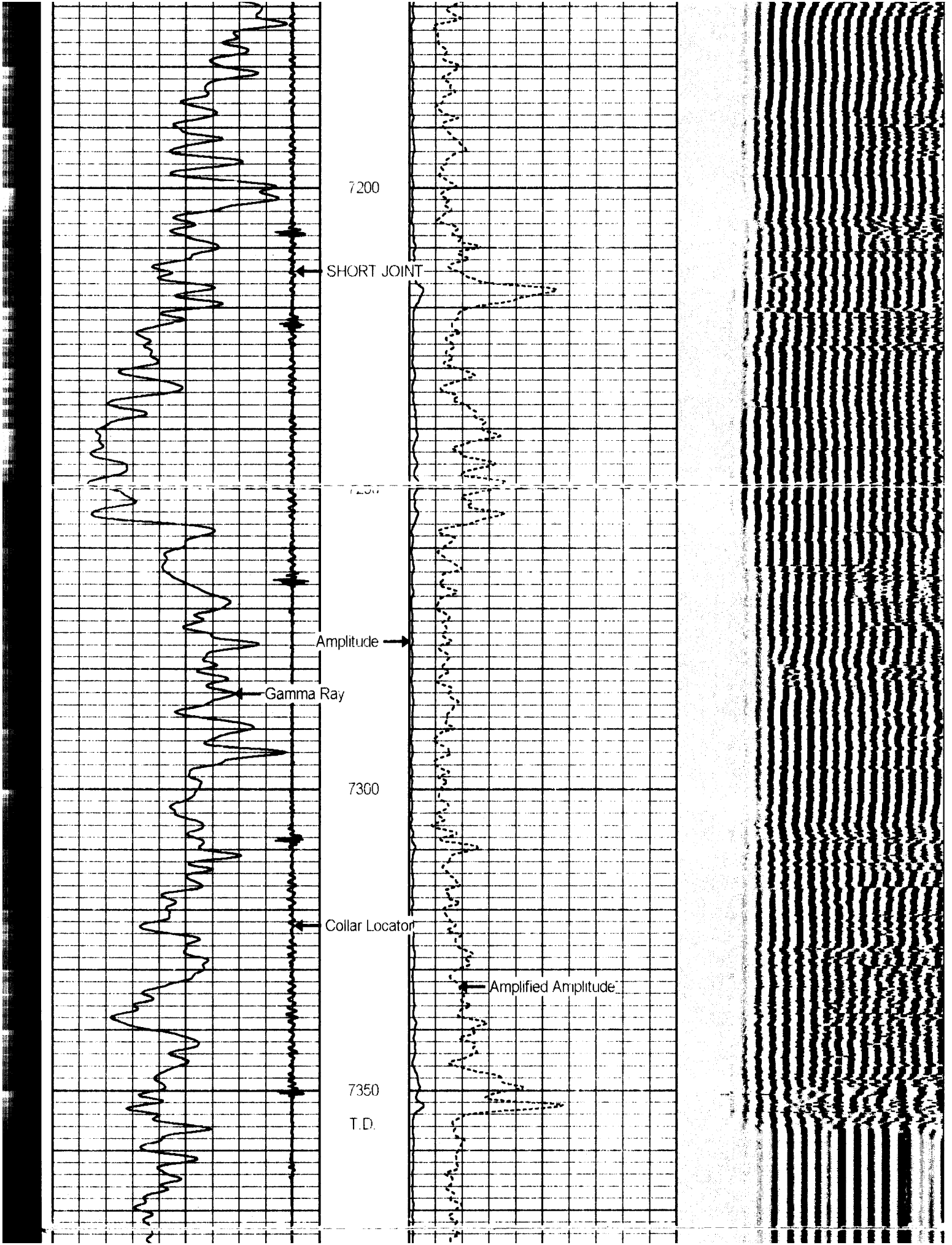
7000

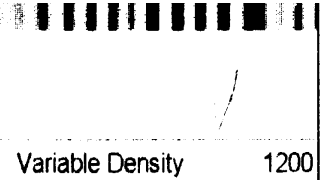
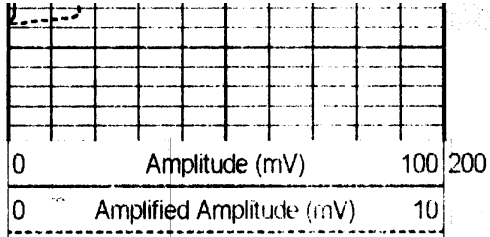
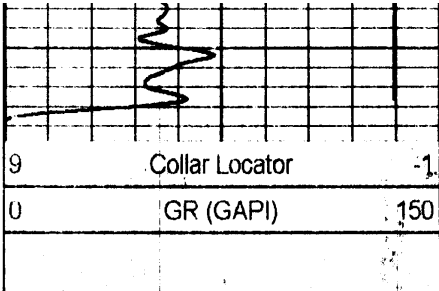
7050

7100

7150







HALLIBURTON

Main Log

5"=100'