

The Road to Excellence Starts with Safety

Sold To #: 353810		Ship To #: 353810		Quote #:		Sales Order #: 7568971	
Customer: XTO ENERGY INC EBUSINESS				Customer Rep: Elrod, Dennis			
Well Name: Hein			Well #: 1-2		API/UWI #:		
Field:		City (SAP): FORT WORTH		County/Parish: La Plata		State: Colorado	
Contractor: AZTEC WELL SERVICE			Rig/Platform Name/Num: AWS 507				
Job Purpose: Cement Production Casing							
Well Type: Producing Well				Job Type: Cement Production Casing			
Sales Person: MASON, KYLE			Srvc Supervisor: ARNOLD, EDWARD		MBU ID Emp #: 439784		

Job Personnel

HES Emp Name	Exp Hrs	Emp #	HES Emp Name	Exp Hrs	Emp #	HES Emp Name	Exp Hrs	Emp #
ARNOLD, EDWARD John	5	439784	DOBBS, CHAD A	5	275043	GAMBLE, BENJAMIN T	5	446666
TYLER, LUTHER	5	375283						

Equipment

HES Unit #	Distance-1 way	HES Unit #	Distance-1 way	HES Unit #	Distance-1 way	HES Unit #	Distance-1 way
10025040	60 mile	10025104	60 mile	10811442	60 mile	10871245	60 mile
10897805	60 mile	10897849	60 mile	11360881	60 mile		

Job Hours

Date	On Location Hours	Operating Hours	Date	On Location Hours	Operating Hours	Date	On Location Hours	Operating Hours
8/15/2010	5	5						

TOTAL Total is the sum of each column separately

Job

Job Times

Formation Name	Formation Depth (MD) Top	Bottom	Called Out	Date	Time	Time Zone	
			15 - Aug - 2010	15 - Aug - 2010	13:00	MST	
Form Type	BHST		On Location	15 - Aug - 2010	18:30	MST	
Job depth MD	3360. ft	Job Depth TVD	3360. ft	Job Started	15 - Aug - 2010	19:42	MST
Water Depth		Wk Ht Above Floor	3. ft	Job Completed	15 - Aug - 2010	21:12	MST
Perforation Depth (MD) From		To		Departed Loc	15 - Aug - 2010	22:32	MST

Well Data

Description	New / Used	Max pressure Psig	Size in	ID in	Weight lbf/ft	Thread	Grade	Top MD ft	Bottom MD ft	Top TVD ft	Bottom TVD ft
7 7/8" Open Hole				7.875				240.	3360.		
5 1/2" Production Casing	Unknown		5.5	4.95	17.			.	3351.3		
8 5/8" Surface Casing	Unknown		8.625	8.097	24.			.	249.		

Sales/Rental/3rd Party (HES)

Description	Qty	Qty uom	Depth	Supplier
SUGAR, GRANULATED, IMPERIAL	100	LB		
PLUG,CMTG, TOP, 5 1/2, HW, 4.38 MIN/5.09 MA	1	EA		

Tools and Accessories

Type	Size	Qty	Make	Depth	Type	Size	Qty	Make	Depth	Type	Size	Qty	Make
Guide Shoe					Packer					Top Plug	5.5	1	HES
Float Shoe					Bridge Plug					Bottom Plug			
Float Collar					Retainer					SSR plug set			
Insert Float										Plug Container	5.5	1	HES
Stage Tool										Centralizers			

Miscellaneous Materials

Sold To # : 353810 Ship To # : 353810 Quote # : Sales Order # : 7568971

Gelling Agt		Conc		Surfactant		Conc		Acid Type		Qty		Conc	%
Treatment Fld		Conc		Inhibitor		Conc		Sand Type		Size		Qty	

Fluid Data												
Stage/Plug #: 1												
Fluid #	Stage Type	Fluid Name			Qty	Qty uom	Mixing Density lbm/gal	Yield ft3/sk	Mix Fluid Gal/sk	Rate bbl/min	Total Mix Fluid Gal/sk	
1	MUD FLUSH	MUD FLUSH - ZI - SBM (13383)			20.00	bbl	8.4	.0	.0	5.0		
2	SJ PRB II - Lead	PRB-2 - SBM (321500)			290.0	sacks	12.3	2.36	12.95	5.0	12.95	
12.95 Gal		FRESH WATER										
3	SJ PRB II - Tail	PRB-2 - SBM (321500)			100.0	sacks	13.5	1.81	8.85	5.0	8.85	
8.85 Gal		FRESH WATER										
4	Displacement Fluid				76.00	bbl	8.3	.0	.0	5.0		
Calculated Values			Pressures			Volumes						
Displacement	76.6	Shut In: Instant				Lost Returns	0	Cement Slurry		151	Pad	
Top Of Cement	Surface	5 Min				Cement Returns	55.6	Actual Displacement		76	Treatment	
Frac Gradient		15 Min				Spacers	20	Load and Breakdown			Total Job 247	
Rates												
Circulating	Rig	Mixing		6		Displacement	Rig	Avg. Job		5		
Cement Left in Pipe		Amount	47.67 ft	Reason	Shoe Joint							
Frac Ring # 1 @	ID	Frac ring # 2 @	ID	Frac Ring # 3 @	ID	Frac Ring # 4 @	ID					
The Information Stated Herein Is Correct				Customer Representative Signature								

The Road to Excellence Starts with Safety

Sold To #: 353810		Ship To #: 353810		Quote #:		Sales Order #: 7568971	
Customer: XTO ENERGY INC EBUSINESS				Customer Rep: Elrod, Dennis			
Well Name: Hein			Well #: 1-2		API/UWI #:		
Field:		City (SAP): FORT WORTH		County/Parish: La Plata		State: Colorado	
Legal Description:							
Lat: N 0 deg. OR N 0 deg. 0 min. 0 secs.				Long: E 0 deg. OR E 0 deg. 0 min. 0 secs.			
Contractor: AZTEC WELL SERVICE			Rig/Platform Name/Num: AWS 507				
Job Purpose: Cement Production Casing						Ticket Amount:	
Well Type: Producing Well			Job Type: Cement Production Casing				
Sales Person: MASON, KYLE			Srvc Supervisor: ARNOLD, EDWARD			MBU ID Emp #: 439784	

Activity Description	Date/Time	Cht #	Rate bbl/min	Volume bbl		Pressure psig		Comments
				Stage	Total	Tubing	Casing	
Call Out	08/15/2010 13:00							
Pre-Convoy Safety Meeting	08/15/2010 14:15							Including entire cement crew
Crew Leave Yard	08/15/2010 14:30							
Arrive At Loc	08/15/2010 18:30							Rig still running casing Approx. 10 joints left
Assessment Of Location Safety Meeting	08/15/2010 18:35							
Pre-Rig Up Safety Meeting	08/15/2010 18:45							Including entire cement crew
Rig-Up Equipment	08/15/2010 18:50							1 Elite #8; 2 660 Bulk trucks; 1 hard line from pump to floor; 1 hard line from floor to pit; 1 line to rig tank. 5.5" compact head.
Rig-Up Completed	08/15/2010 19:15							
Pre-Job Safety Meeting	08/15/2010 19:30							Including everyone on location
Start Job	08/15/2010 19:42							TD3360; TP 3351.28; SJ 47.67; OH 7 7/8; CASING 5.5", 17# J-55; SURFACE AT 249 8 5/8" 24# J-55; Mud was 10.7 ppg yp34, pv45,
Other	08/15/2010 19:43		2	2			150.0	Fill lines
Pressure Test	08/15/2010 19:44						4804.0	PSI test good, no leaks.

Sold To # : 353810

Ship To # :353810

Quote # :

Sales Order # : 7568971

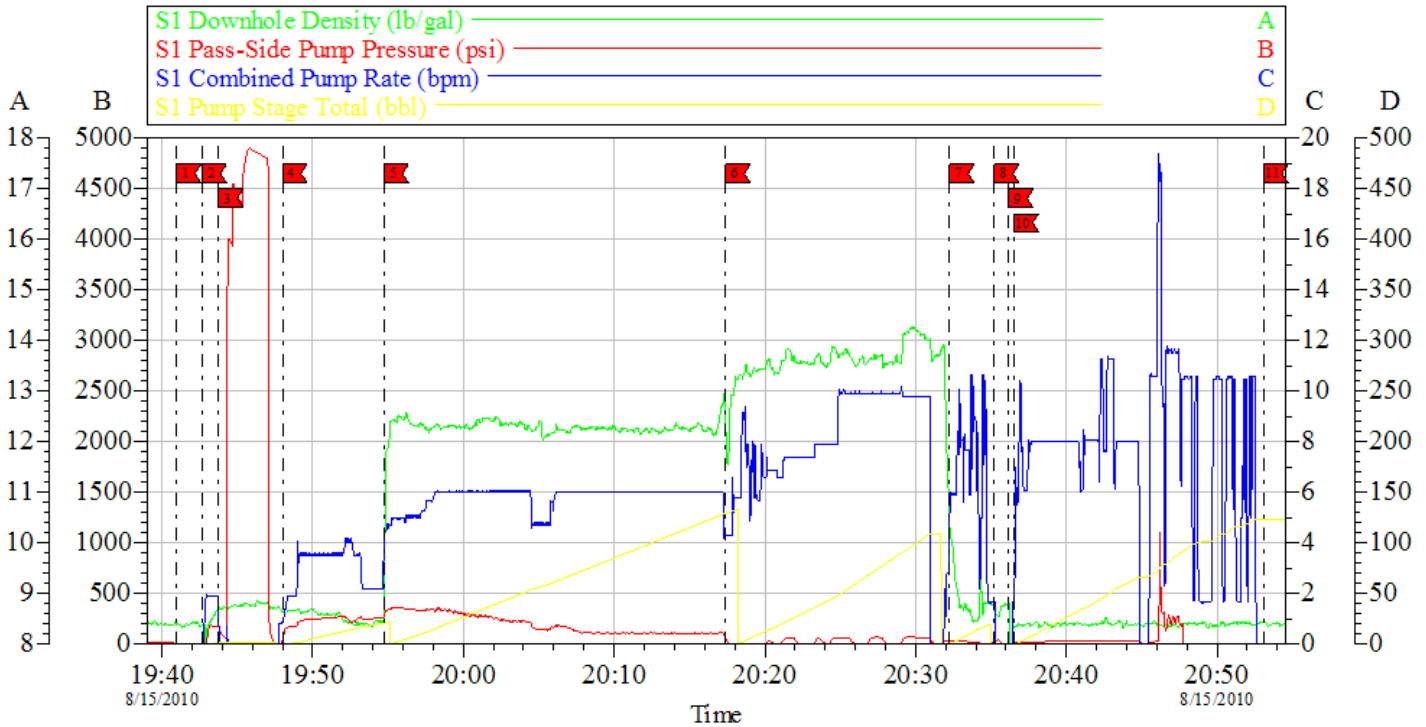
SUMMIT Version: 7.20.130

Friday, September 10, 2010 08:22:00

Activity Description	Date/Time	Cht #	Rate bbl/min	Volume bbl		Pressure psig		Comments
				Stage	Total	Tubing	Casing	
Pump Spacer 2	08/15/2010 19:47		5	20			260.0	20 BBL Mud Flush III
Pump Lead Cement	08/15/2010 19:54		6	121			114.0	290 sks Lead cement, 12.3 ppg; 2.36 cf3; 12.95 gal/sk.
Pump Tail Cement	08/15/2010 20:17		6	30				100 sks Tail cement, 13.5 ppg; 1.81 cf3; 8.85 gal/sk.
Shutdown	08/15/2010 20:32							Cement was locking up in truck had to pre mix boost tail cement off of truck got aprox 30 bbls gone.
Clean Lines	08/15/2010 20:35							Clean pump and lines to pit. Could not get rate that pump was at out of lines.
Drop Plug	08/15/2010 20:35							Plug left container.
Pump Displacement	08/15/2010 20:36							Fresh water displacement. Pump was not moving fluid turned over to rig to bump plug. BBL counter said fifty bbl's gone only fifteen gone. Turned over to rig to finish pumping displacement. Pumped at aprox 100 gpm for 24 minutes.
Bump Plug	08/15/2010 21:12						700.0	bumped plug at 700 psi
Check Floats	08/15/2010 21:15							Floats held.
End Job	08/15/2010 21:16							Good circulation throughout job. Got 55.6 bbl cement to surface. Got hard chunky cement at first then better more fluid cement after wards.
Pre-Rig Down Safety Meeting	08/15/2010 21:25							Including entire cement crew.
Rig-Down Equipment	08/15/2010 21:30							
Rig-Down Completed	08/15/2010 22:00							
Pre-Convoy Safety Meeting	08/15/2010 22:15							Including entire cement crew.

Crew Leave Location	08/15/2010 22:30							
Activity Description	Date/Time	Cht #	Rate bbl/ min	Volume bbl		Pressure psig		Comments
				Stage	Total	Tubing	Casing	
Other	08/15/2010 22:31							Thank You for using Halliburton. Ed Arnold and crew.

XTO
5.5" PRODUCTION
HEIN 1-2



Local Event Log			
START JOB	19:40:57	PRIME LINES	19:42:40
PUMP MUD FLUSH	19:48:00	PUMP LEAD CEMENT	19:54:43
SHUT DOWN	20:32:16	CLEAN LINES	20:35:14
PUMP DISPLACEMENT	20:36:31	TURN OVER TO RIG TO BUMP PLUG	20:53:04
		TEST LINES	19:43:46
		PUMP TAIL CEMENT	20:17:24
		DROP PLUG	20:36:10

Customer:	Job Date: 15-Aug-2010	Sales Order #: 7568971
Well Description:	Job Type:	ADC Used:
Company Rep:	Cement Supervisor:	Elite #:

OptiCem v6.4.8
15-Aug-10 22:02

