

The Road to Excellence Starts with Safety

Sold To #: 353810		Ship To #: 353810		Quote #:		Sales Order #: 7558451	
Customer: XTO ENERGY INC EBUSINESS				Customer Rep: Elrod, Dennis			
Well Name: Hein			Well #: 1-2		API/UWI #:		
Field:		City (SAP): FORT WORTH		County/Parish: La Plata		State: Colorado	
Contractor: AZTEC WELL SERVICE			Rig/Platform Name/Num: AWS 507				
Job Purpose: Cement Surface Casing							
Well Type: Producing Well				Job Type: Cement Surface Casing			
Sales Person: MASON, KYLE			Srcv Supervisor: ARNOLD, EDWARD		MBU ID Emp #: 439784		

**Job Personnel**

HES Emp Name	Exp Hrs	Emp #	HES Emp Name	Exp Hrs	Emp #	HES Emp Name	Exp Hrs	Emp #
ARNOLD, EDWARD John	4.5	439784	GAMBLE, BENJAMIN T	4.5	446666	MARTIN, EHLER Dean	4.5	458474

**Equipment**

HES Unit #	Distance-1 way	HES Unit #	Distance-1 way	HES Unit #	Distance-1 way	HES Unit #	Distance-1 way
10001398C	60 mile	10871245	60 mile	11338219	60 mile	11360881	60 mile

**Job Hours**

Date	On Location Hours	Operating Hours	Date	On Location Hours	Operating Hours	Date	On Location Hours	Operating Hours
8-9-2010	1.5	1	8-10-2010	2.5				

<b>TOTAL</b>	<i>Total is the sum of each column separately</i>							
--------------	---	--	--	--	--	--	--	--

**Job**

**Job Times**

Formation Name	Date	Time	Time Zone
Formation Depth (MD) Top	Bottom	Called Out	09 - Aug - 2010 17:30 MST
Form Type	BHST	On Location	09 - Aug - 2010 22:30 MST
Job depth MD	271. ft	Job Depth TVD	271. ft
Water Depth		Job Started	10 - Aug - 2010 00:27 MST
Perforation Depth (MD) From	To	Job Completed	10 - Aug - 2010 01:30 MST
		Departed Loc	10 - Aug - 2010 03:00 MST

**Well Data**

Description	New / Used	Max pressure psig	Size in	ID in	Weight lbf/ft	Thread	Grade	Top MD ft	Bottom MD ft	Top TVD ft	Bottom TVD ft
12 1/4" Surface Open Hole				12.25				.	271.		
8 5/8" Surface Casing	Unknown		8.625	8.097	24.		J-55	.	266.1		

**Sales/Rental/3<sup>rd</sup> Party (HES)**

Description	Qty	Qty uom	Depth	Supplier
SUGAR, GRANULATED, IMPERIAL	100	LB		

**Tools and Accessories**

Type	Size	Qty	Make	Depth	Type	Size	Qty	Make	Depth	Type	Size	Qty	Make
Guide Shoe					Packer					Top Plug	8.625	1	HES
Float Shoe					Bridge Plug					Bottom Plug			
Float Collar					Retainer					SSR plug set			
Insert Float										Plug Container	8.625	1	HES
Stage Tool										Centralizers			

**Miscellaneous Materials**

Gelling Agt	Conc	Surfactant	Conc	Acid Type	Qty	Conc	%
Treatment Fld	Conc	Inhibitor	Conc	Sand Type	Size	Qty	

**Fluid Data**

Stage/Plug #: 1									
Fluid #	Stage Type	Fluid Name	Qty	Qty uom	Mixing Density lbm/gal	Yield ft <sup>3</sup> /sk	Mix Fluid Gal/sk	Rate bbl/min	Total Mix Fluid Gal/sk
1	Fresh Water		10.00	bbl	8.3	.0	.0	5.0	
2	SurfaceCem	CMT - PREMIUM - CLASS G, 94 LB SK (100003685)	190.0	sacks	15.8	1.17	5.1	5.0	5.1
	94 lbm	CMT - PREMIUM - CLASS G REG OR TYPE V, BULK (100003685)							
	3 %	CALCIUM CHLORIDE - HI TEST PELLET (100005053)							
	0.125 lbm	POLY-E-FLAKE (101216940)							
	5.013 Gal	FRESH WATER							
3	Displacement		14.00	bbl	8.3	.0	.0	5.0	
Calculated Values		Pressures		Volumes					
Displacement	14.2	Shut In: Instant		Lost Returns	0	Cement Slurry	39.3	Pad	
Top Of Cement	SURFACE	5 Min		Cement Returns	18	Actual Displacement	14.2	Treatment	
Frac Gradient		15 Min		Spacers	10	Load and Breakdown		Total Job	63.5
Rates									
Circulating	RIG	MIXING	4	Displacement	4	Avg. Job			4
Cement Left In Pipe	Amount	41.51 ft	Reason	Shoe Joint					
Frac Ring # 1 @	ID	Frac ring # 2 @	ID	Frac Ring # 3 @	ID	Frac Ring # 4 @	ID		
The Information Stated Herein Is Correct				Customer Representative Signature					

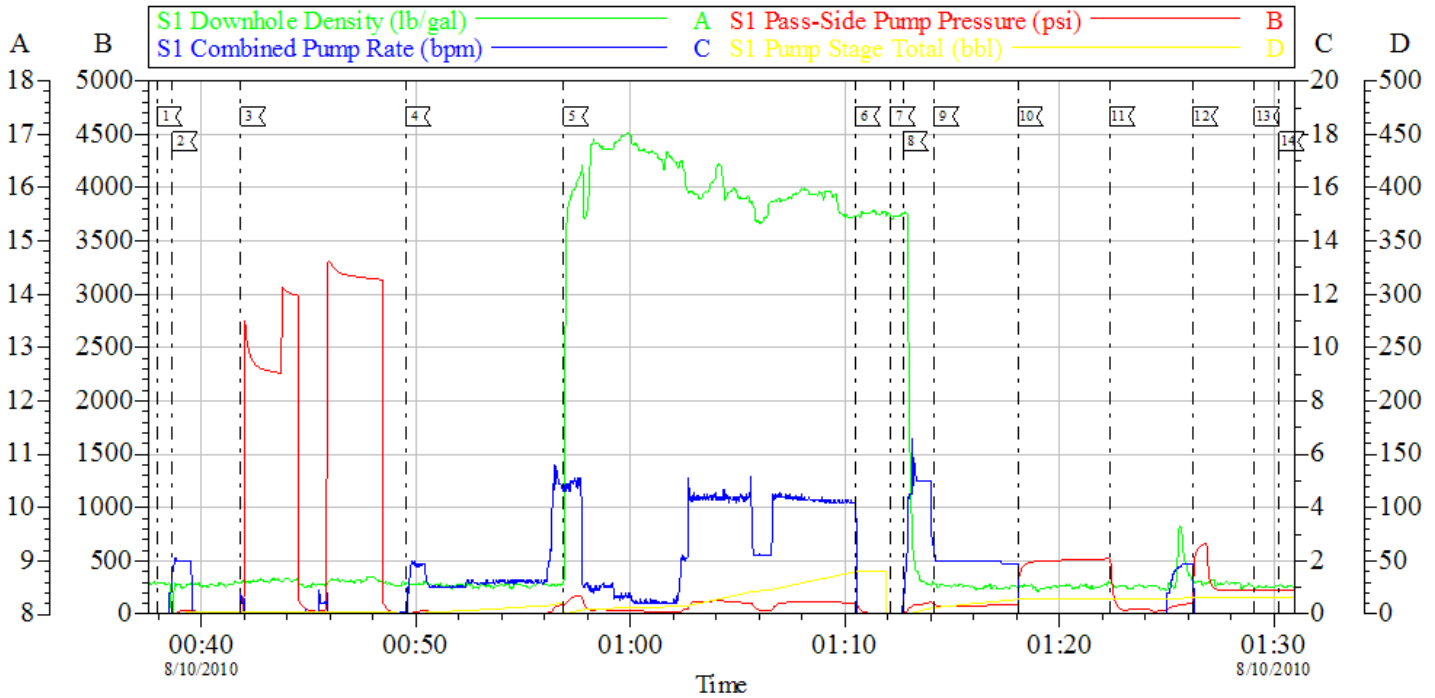
*The Road to Excellence Starts with Safety*

<b>Sold To #:</b> 353810		<b>Ship To #:</b> 353810		<b>Quote #:</b>		<b>Sales Order #:</b> 7558451	
<b>Customer:</b> XTO ENERGY INC EBUSINESS				<b>Customer Rep:</b> Elrod, Dennis			
<b>Well Name:</b> Hein			<b>Well #:</b> 1-2		<b>API/UWI #:</b>		
<b>Field:</b>		<b>City (SAP):</b> FORT WORTH		<b>County/Parish:</b> La Plata		<b>State:</b> Colorado	
<b>Legal Description:</b>							
<b>Lat:</b> N 0 deg. OR N 0 deg. 0 min. 0 secs.				<b>Long:</b> E 0 deg. OR E 0 deg. 0 min. 0 secs.			
<b>Contractor:</b> AZTEC WELL SERVICE			<b>Rig/Platform Name/Num:</b> AWS 507				
<b>Job Purpose:</b> Cement Surface Casing					<b>Ticket Amount:</b>		
<b>Well Type:</b> Producing Well				<b>Job Type:</b> Cement Surface Casing			
<b>Sales Person:</b> MASON, KYLE			<b>Srvc Supervisor:</b> ARNOLD, EDWARD			<b>MBU ID Emp #:</b> 439784	

Activity Description	Date/Time	Cht #	Rate bbl/min	Volume bbl		Pressure psig		Comments
				Stage	Total	Tubing	Casing	
Call Out	08/09/2010 17:30							
Pre-Convoy Safety Meeting	08/09/2010 20:15							Including entire cement crew
Crew Leave Yard	08/09/2010 20:30							
Arrive At Loc	08/09/2010 22:30							Rig running casing Aprox. 4 Joints left. Rig Circulated for 45 min prior to job.
Assessment Of Location Safety Meeting	08/09/2010 22:45							Water Test: Ph 6; KCl 250; Fe 0; SO4 <200; Chlorides 0; Calcium 120; Temp 76.
Pre-Rig Up Safety Meeting	08/09/2010 22:50							Including entire cement crew
Rig-Up Equipment	08/09/2010 23:00							1 Elite # 8; 1 660 bulk truck; 1 hard line from pump to floor; 1 line to rig Tank. 8.625" compact head; # B0251.
Rig-Up Completed	08/09/2010 23:30							
Pre-Job Safety Meeting	08/10/2010 00:15							Including everyone on location
Start Job	08/10/2010 00:37							TD 271; TP 249.54+16.57 landing joint; SJ 41.51; OH 12.25; CASING 8.625" 24# J-55; MUD 8.8 ppg;
Other	08/10/2010 00:38		2	2			35.0	Fill lines with fresh water.

Activity Description	Date/Time	Cht #	Rate bbl/min	Volume bbl		Pressure psig		Comments
				Stage	Total	Tubing	Casing	
				Pressure Test	08/10/2010 00:41			
Pump Spacer 1	08/10/2010 00:49		5	10			80.0	20 BBL fresh water.
Pump Cement	08/10/2010 00:56		4.4	39.6			105.0	190 SKs Tail cement, 15.8 ppg; 1.17 cf3; 5.01 gal/sk.
Shutdown	08/10/2010 01:10							
Drop Plug	08/10/2010 01:11							Plug left container.
Pump Displacement	08/10/2010 01:12		5	5			90.0	Fresh Water Displacement
Slow Rate	08/10/2010 01:14		2	9.2			93.0	Slow rate last ten BBLs
Bump Plug	08/10/2010 01:18				14.2		490.0	Bumped plug took to 490 PSI.
Check Floats	08/10/2010 01:22							Floats did not hold. Got two BBLs back.
Bump Plug	08/10/2010 01:26		2	2			490.0	Pumped two BBLs back in to well and rebumped.
Shut In Well	08/10/2010 01:29						220.0	Shut in well per Co. Rep.
End Job	08/10/2010 01:30							
Pre-Rig Down Safety Meeting	08/10/2010 01:45							Including entire cement crew.
Rig-Down Equipment	08/10/2010 02:00							
Rig-Down Completed	08/10/2010 02:45							
Pre-Convoy Safety Meeting	08/10/2010 02:50							Including entire cement crew.
Depart Location for Service Center or Other Site	08/10/2010 03:00							
Other	08/10/2010 03:00							Thank You for using Halliburton. Ed Arnold and crew.

## XTO 8.625" Surface Hein 1-2



Local Event Log								
1	START JOB	00:37:56	2	FILL LINES	00:38:39	3	TEST LINES	00:41:51
4	PUMP H2O SPACER	00:49:32	5	PUMP PRIMARY CEMENT	00:56:54	6	SHUT DOWN	01:10:30
7	DROP PLUG	01:12:07	8	PUMP H2O DISPLACEMENT	01:12:42	9	SLOW RATE	01:14:09
10	BUMP PLUG	01:18:04	11	CHECK FLOATS	01:22:22	12	REBUMP PLUG	01:26:14
13	SHUT IN WELL	01:29:06	14	END JOB	01:30:15			

Customer: XTO	Job Date: 10-Aug-2010	Sales Order #: 7558451
Well Description: Hein 1-2	Job Type: 8.25 Surface	ADC Used: Yes
Company Rep: Dennis Eirod	Cement Supervisor: Ed Arnold	Elite #8 Tracy Gamble

OptiCem v6.4.8  
10-Aug-10 01:56