

**API Well No.:**  
**MCDANIEL 14-6A**

**Customer Representative:**  
**JOHN TURNER**  
**Halliburton Operator:**  
**KERRY KING**  
**Ticket No.:**  
**6334020**

**HALLIBURTON**

The Road to Excellence Starts with Safety

Sold To #: 339275	Ship To #: 339275	Quote #:	Sales Order #: 6334020
Customer: PLAINS EXPLORATION & PRODUCTION CO		Customer Rep: JOHN TURNER	
Well Name: MCDANIEL		Well #: 14-6A	API/UWI #:
Field: BRUSH CREEK	City (SAP): HOUSTON	County/Parish: Mesa	State: Colorado
Contractor: GREYWOLF 18		Rig/Platform Name/Num: GREYWOLF 18	
Job Purpose: Cement Surface Casing			
Well Type: Development Well		Job Type: Cement Surface Casing	
Sales Person: DUNNING, DUSTIN		Srvc Supervisor: KING, KERRY	MBU ID Emp #: 342363

### Job Personnel

HES Emp Name	Exp Hrs	Emp #	HES Emp Name	Exp Hrs	Emp #	HES Emp Name	Exp Hrs	Emp #
KING, KERRY Sherman		342363	NOHAVA, MATTHEW G		452649	SLAUGHTER, JESSE Dean		454315
YOUNG, JEREMY R		418013	COLLINS, JOSH		452648			

### Equipment

HES Unit #	Distance-1 way	HES Unit #	Distance-1 way	HES Unit #	Distance-1 way	HES Unit #	Distance-1 way
10784080	130 mile	10804579	130 mile	10829464	130 mile	10857016	130 mile
10867423	130 mile	10872113	130 mile	10897887	130 mile		

### Job Hours

Date	On Location Hours	Operating Hours	Date	On Location Hours	Operating Hours	Date	On Location Hours	Operating Hours
11-28-08	4	3						

TOTAL Total is the sum of each column separately

### Job

### Job Times

Formation Name	Date	Time	Time Zone	
Formation Depth (MD) Top	Called Out	28 - Nov - 2008	00:00	MST
Formation Depth (MD) Bottom	On Location	28 - Nov - 2008	09:00	MST
Form Type	Job Started	28 - Nov - 2008	11:04	MST
Job depth MD	Job Completed	28 - Nov - 2008	11:58	MST
Water Depth	Departed Loc	28 - Nov - 2008	13:00	MST
Perforation Depth (MD) From				
Perforation Depth (MD) To				

### Well Data

Description	New / Used	Max pressure psig	Size in	ID in	Weight lbm/ft	Thread	Grade	Top MD ft	Bottom MD ft	Top TVD ft	Bottom TVD ft

### Sales/Rental/3<sup>rd</sup> Party (HES)

Description	Qty	Qty uom	Depth	Supplier
PLUG,CMTG, TOP, 8 5/8, HWE, 7.20 MIN/8.09 MA	1	EA		

### Tools and Accessories

Type	Size	Qty	Make	Depth	Type	Size	Qty	Make	Depth	Type	Size	Qty	Make
Guide Shoe					Packer					Top Plug	8 5/8	1	HES
Float Shoe					Bridge Plug					Bottom Plug			
Float Collar					Retainer					SSR plug set			
Insert Float										Plug Container	8 5/8	1	HES
Stage Tool										Centralizers	8 5/8	12	HES

### Miscellaneous Materials

Gelling Agt	Conc	Surfactant	Conc	Acid Type	Qty	Conc	%
Treatment Fld	Conc	Inhibitor	Conc	Sand Type	Size	Qty	

### Fluid Data

Stage/Plug #: 1										
Fluid #	Stage Type	Fluid Name	Qty	Qty uom	Mixing Density lbm/gal	Yield ft <sup>3</sup> /sk	Mix Fluid Gal/sk	Rate bbl/min	Total Mix Fluid Gal/sk	

Stage/Plug #: 1									
Fluid #	Stage Type	Fluid Name	Qty	Qty uom	Mixing Density lbm/gal	Yield ft <sup>3</sup> /sk	Mix Fluid Gal/sk	Rate bbl/min	Total Mix Fluid Gal/sk
1	H2O SPACER		20	bbl	8.33	.0	.0	.0	
2	Lead Cement	VERSACEM (TM) SYSTEM (452010)	220	sacks	12.3	2.38	13.75		
0.432 Gal		FRESH WATER							
3	Tail Cement	SWIFTCEM (TM) SYSTEM (452990)	200	sacks	14.2	1.43	6.88		
Gal		FRESH WATER							
Calculated Values			Pressures			Volumes			
Displacement	91	Shut In: Instant		Lost Returns		Cement Slurry		Pad	
Top Of Cement	SURFACE	5 Min		Cement Returns	30	Actual Displacement	89	Treatment	
Frac Gradient		15 Min		Spacers		Load and Breakdown		Total Job	
Rates									
Circulating		Mixing	8	Displacement	10	Avg. Job	8		
Cement Left In Pipe	Amount	27 ft	Reason	Shoe Joint					
Frac Ring # 1 @	ID	Frac ring # 2 @	ID	Frac Ring # 3 @	ID	Frac Ring # 4 @	ID		
<b>The Information Stated Herein Is Correct</b>				Customer Representative Signature					

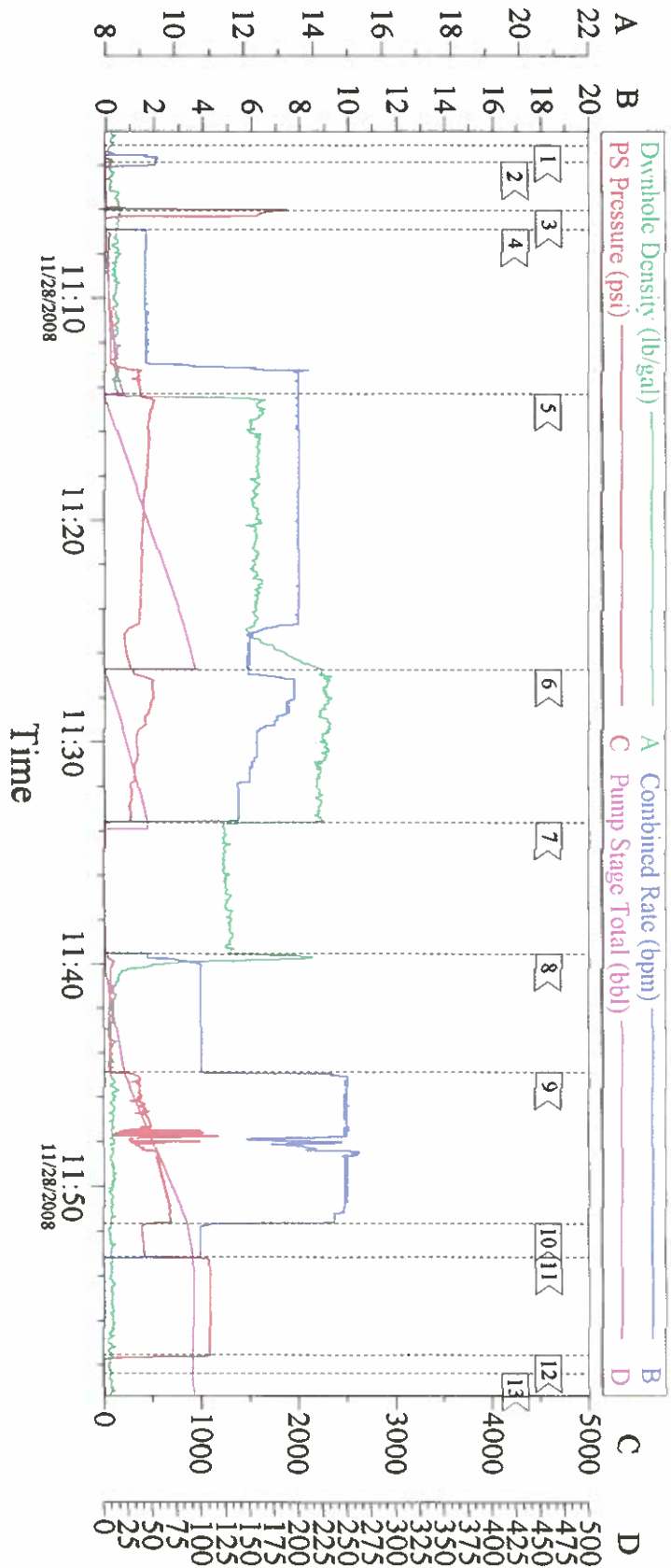
*The Road to Excellence Starts with Safety*

Sold To #: 339275	Ship To #: 339275	Quote #:	Sales Order #: 6334020
Customer: PLAINS EXPLORATION & PRODUCTION CO		Customer Rep: JOHN TURNER	
Well Name: MCDANIEL	Well #: 14-6A	API/UWI #:	
Field: BRUSH CREEK	City (SAP): HOUSTON	County/Parish: Mesa	State: Colorado
Legal Description:			
Lat:		Long:	
Contractor: GREYWOLF 18		Rig/Platform Name/Num: GREYWOLF 18	
Job Purpose: Cement Surface Casing			Ticket Amount:
Well Type: Development Well		Job Type: Cement Surface Casing	
Sales Person: DUNNING, DUSTIN		Srv Supervisor: KING, KERRY	MBU ID Emp #: 342363

Activity Description	Date/Time	Cht #	Rate bbl/min	Volume bbl		Pressure psig		Comments
				Stage	Total	Tubing	Casing	
Arrive at Location from Service Center	11/28/2008 09:00							RIG WAS RUNNING CASING WHEN CEMENT CREW ARRIVED TO LOCATION.
Assessment Of Location Safety Meeting	11/28/2008 09:10							TP 1528, TD 1528, 27FT SHOE JOINT, 12 1/4" HOLE. 8 5/8', 32#/FT CASING. 12 CENTRALIZERS USED ON CASING STRING.
Pre-Job Safety Meeting	11/28/2008 10:40							WELL WAS CIRCULATED FOR 2 HRS PRIOR TO CEMENTING. HEAD WAS 4FT OFF RIG FLOOR FOR JOB. PIPE WAS NOT RECIPROCATED DURING CIRCULATION OR CEMENTING.
Start Job	11/28/2008 11:04							PLUG CONTAINER # 1049 WAS USED FOR JOB. HEAD WAS CHAINED DOWN DURING CEMENTING AND DISPLACEMENT.
Test Lines	11/28/2008 11:07						2000.0	
Pump Spacer 1	11/28/2008 11:08		8	10			355.0	FRESH WATER
Pump Lead Cement	11/28/2008 11:15		8	95			440.0	220 SKS @ 12.3PPG, 2.38 YLD, 13.75 GAL/SK

Activity Description	Date/Time	Cht #	Rate bbl/min	Volume bbl		Pressure psig		Comments
				Stage	Total	Tubing	Casing	
Pump Tail Cement	11/28/2008 11:26		6	44			355.0	200 SKS @ 14.2PPG, 1.43YLD, 6.88 GAL/SK
Shutdown	11/28/2008 11:34							
Drop Top Plug	11/28/2008 11:40							PLUG LAUNCHED
Pump Displacement	11/28/2008 11:40		10				600.0	FRESH WATER
Bump Plug	11/28/2008 11:54		4	89			1087.0	SLOW RATE 10BBLS PRIOR TO REACHING CALCULATED DISPLACEMENT
Check Floats	11/28/2008 11:58							FLOAT HOLDING, GOOD RETURNS DURING JOB. 30BBLS OF LEAD CEMENT BACK TO SURFACE
End Job	11/28/2008 11:59							THANK YOU, KERRY KING AND CREW

# 8 5/8 SURFACE



Event Log		
1	START JOB	11:03:06
2	PRIME LINES	11:03:53
3	TEST LINES	11:06:03
4	PUMP SPACER	11:06:54
5	LEAD CEMENT	11:14:18
6	TAIL CEMENT	11:26:42
7	SHUT DOWN	11:33:36
8	DROP PLUG, START DISPLACEMENT	11:39:30
9	INCREASE RATE	11:44:50
10	SLOW RATE	11:51:38
11	BUMP PLUG	11:53:08
12	CHECK FLOAT	11:57:32
13	END JOB	11:58:22

Customer:	PXP	Job Date:	11-28-08	Ticket #:	6334020
OPERATOR	JEREMY YOUNG	CEMENTER	KERRY KING	ADC USED	YES
PUMP TRUCK	ELITE 10	WELL #	MCDANEIL 14-6A	CO REP	JOHN TURNER