

**PLAINS EXPLORATION & PRODUCTION CO
717 TEXAS ST STE 2100
HOUSTON, Texas**

MCDANIEL
MCDANIEL 14-4C

GREYWOLF 18/GREYWOLF/18

Post Job Summary
Cement Surface Casing

Prepared for: CURT CLAUSSEN
Date Prepared: 10/29/08
Version: 1

Service Supervisor: GALLEGOS, JASON

Submitted by:

HALLIBURTON

HALLIBURTON

Cementing Job Summary

The Road to Excellence Starts with Safety

Sold To #: 339275	Ship To #: 2690868	Quote #:	Sales Order #: 6275717
Customer: PLAINS EXPLORATION & PRODUCTION CO		Customer Rep: CLAUSSEN, CURT	
Well Name: MCDANIEL	Well #: 14-4C	API/UWI #: 05-077-09603	
Field: BRUSH CREEK	City (SAP): COLLBRAN	County/Parish: Garfield	State: Colorado
Lat: N 39.281 deg. OR N 39 deg. 16 min. 52.986 secs.		Long: W 107.854 deg. OR W -108 deg. 8 min. 47.335 secs.	
Contractor: GREYWOLF 18	Rig/Platform Name/Num: GREYWOLF 18		
Job Purpose: Cement Surface Casing			
Well Type: Development Well		Job Type: Cement Surface Casing	
Sales Person: DUNNING, DUSTIN		Srvc Supervisor: GALLEGOS, JASON	MBU ID Emp #: 386647

Job Personnel

HES Emp Name	Exp Hrs	Emp #	HES Emp Name	Exp Hrs	Emp #	HES Emp Name	Exp Hrs	Emp #
CARTER, ERIC Earl	3.5	345598	GALLEGOS, JASON Michael	3.5	386647	HAYES, JESSE Doug	3.5	403601
REEVES, BRANDON W	3.5	287883	TRIPLETT, MICHAEL Anthony	3.5	447908			

Equipment

HES Unit #	Distance-1 way	HES Unit #	Distance-1 way	HES Unit #	Distance-1 way	HES Unit #	Distance-1 way
10547376	130 MILES	10829463	130 MILES	10897797	130 MILES	10296152	130 MILES
10086132	130 MILES	10025041	130 MILES	10026549	130 MILES	10025034	130 MILES

Job Hours

Date	On Location Hours	Operating Hours	Date	On Location Hours	Operating Hours	Date	On Location Hours	Operating Hours
10/28/08	2	2	10/29/08	1.5	1			
TOTAL			Total is the sum of each column separately					

Job

Job Times

Formation Name	Formation Depth (MD)	Top	SURFACE	Bottom	1532 FT	Called Out	Date	Time	Time Zone
							28 - Oct - 2008	17:00	MST
Form Type			BHST			On Location	28 - Oct - 2008	22:00	MST
Job depth MD	1532. ft		Job Depth TVD	1532. ft		Job Started	28 - Oct - 2008	22:54	MST
Water Depth			Wk Ht Above Floor	5 FT		Job Completed	29 - Oct - 2008	23:43	MST
Perforation Depth (MD)	From		To			Departed Loc	29 - Oct - 2008	01:30	MST

Well Data

Description	New / Used	Max pressure psig	Size in	ID in	Weight lbm/ft	Thread	Grade	Top MD ft	Bottom MD ft	Top TVD ft	Bottom TVD ft

Sales/Rental/3rd Party (HES)

Description	Qty	Qty uom	Depth	Supplier
PLUG,CMTG, TOP, 8 5/8, HWE, 7.20 MIN/8.09 MA	1	EA		

Tools and Accessories

Type	Size	Qty	Make	Depth	Type	Size	Qty	Make	Depth	Type	Size	Qty	Make
Guide Shoe					Packer					Top Plug	4.5	1	
Float Shoe					Bridge Plug					Bottom Plug			
Float Collar					Retainer					SSR plug set			
Insert Float										Plug Container	4.5	1	
Stage Tool										Centralizers			

Miscellaneous Materials

Gelling Agt	Conc	Surfactant	Conc	Acid Type	Qty	Conc	%
Treatment Fld	Conc	Inhibitor	Conc	Sand Type	Size	Qty	

Fluid Data									
Stage/Plug #: 1									
Fluid #	Stage Type	Fluid Name	Qty	Qty uom	Mixing Density lbm/gal	Yield ft ³ /sk	Mix Fluid Gal/sk	Rate bbl/min	Total Mix Fluid Gal/sk
1	WATER SPACER		40.0	bbl	.	.0	.0	8	
2	Lead Cement	VERSACEM (TM) SYSTEM (452010)	240.0	sacks	12.3	2.38	13.75	8	
	0.432 Gal	FRESH WATER							
3	Tail Cement	SWIFTCEM (TM) SYSTEM (452990)	200.0	sacks	14.2	1.43	6.88	8	
4	DISPLACEMENT	FRESH WATER	91.6	bbl	.	.0	.0	10	
Calculated Values		Pressures		Volumes					
Displacement	91.6	Shut In: Instant		Lost Returns	NONE	Cement Slurry	152.6	Pad	
Top Of Cement	SURFACE	5 Min		Cement Returns	30	Actual Displacement	91.6	Treatment	
Frac Gradient		15 Min		Spacers	40	Load and Breakdown		Total Job	284.2
Rates									
Circulating		Mixing	8	Displacement	10	Avg. Job	9		
Cement Left In Pipe	Amount	28.50 ft	Reason	Shoe Joint					
Frac Ring # 1 @	ID	Frac ring # 2 @	ID	Frac Ring # 3 @	ID	Frac Ring # 4 @	ID		
The Information Stated Herein Is Correct				Customer Representative Signature					

The Road to Excellence Starts with Safety

Sold To #: 339275	Ship To #: 2690868	Quote #:	Sales Order #: 6275717
Customer: PLAINS EXPLORATION & PRODUCTION CO		Customer Rep: CLAUSSEN, CURT	
Well Name: MCDANIEL	Well #: 14-4C	API/UWI #: 05-077-09603	
Field: BRUSH CREEK	City (SAP): COLBRAN	County/Parish: Garfield	State: Colorado
Legal Description:			
Lat: N 39.281 deg. OR N 39 deg. 16 min. 52.986 secs.		Long: W 107.854 deg. OR W -108 deg. 8 min. 47.335 secs.	
Contractor: GREYWOLF 18		Rig/Platform Name/Num: GREYWOLF 18	
Job Purpose: Cement Surface Casing			Ticket Amount:
Well Type: Development Well		Job Type: Cement Surface Casing	
Sales Person: DUNNING, DUSTIN		Srvc Supervisor: GALLEGOS, JASON	MBU ID Emp #: 386647

Activity Description	Date/Time	Cht #	Rate bbl/min	Volume bbl		Pressure psig		Comments
				Stage	Total	Tubing	Casing	
Call Out	10/28/2008 17:00							
Depart Yard Safety Meeting	10/28/2008 18:30							ATTENDED BY ENTIRE HES CREW
Crew Leave Yard	10/28/2008 18:30							
Arrive At Loc	10/28/2008 21:00							RIG DONE RUNNING CASING
Assessment Of Location Safety Meeting	10/28/2008 21:10							ATTENDED BY ENTIRE HES CREW
Other	10/28/2008 21:20							
Pre-Rig Up Safety Meeting	10/28/2008 21:50							ATTENDED BY ENTIRE HES CREW
Rig-Up Equipment	10/28/2008 22:00							
Pre-Job Safety Meeting	10/28/2008 22:30							ATTENDED BY ENTIRE HES CREW AND ENTIRE RIG CREW
Start Job	10/28/2008 22:54							TP 1532', TD 1532', SJ 28.5', MW 10#, CASING 8.625" 32# J-55, HOLE 12 1/4"
Test Lines	10/28/2008 22:57		2	2			3000.0	PRESSURE HELD
Pump Spacer 1	10/28/2008 22:58		8	40			313.0	FRESH WATER
Pump Lead Cement	10/28/2008 23:08		8	101.7			390.0	240 SACKS, MIXED @12.3 PPG, 2.38 YIELD, 13.75 GAL/SK
Pump Tail Cement	10/28/2008 23:20		8	50.9			349.0	200 SACKS, MIXED @ 14.2 PPG, 1.43 YIELD, 6.88 GAL/SK
Shutdown	10/28/2008 23:26							

Sold To #: 339275

Ship To #: 2690868

Quote #:

Sales Order #:

6275717

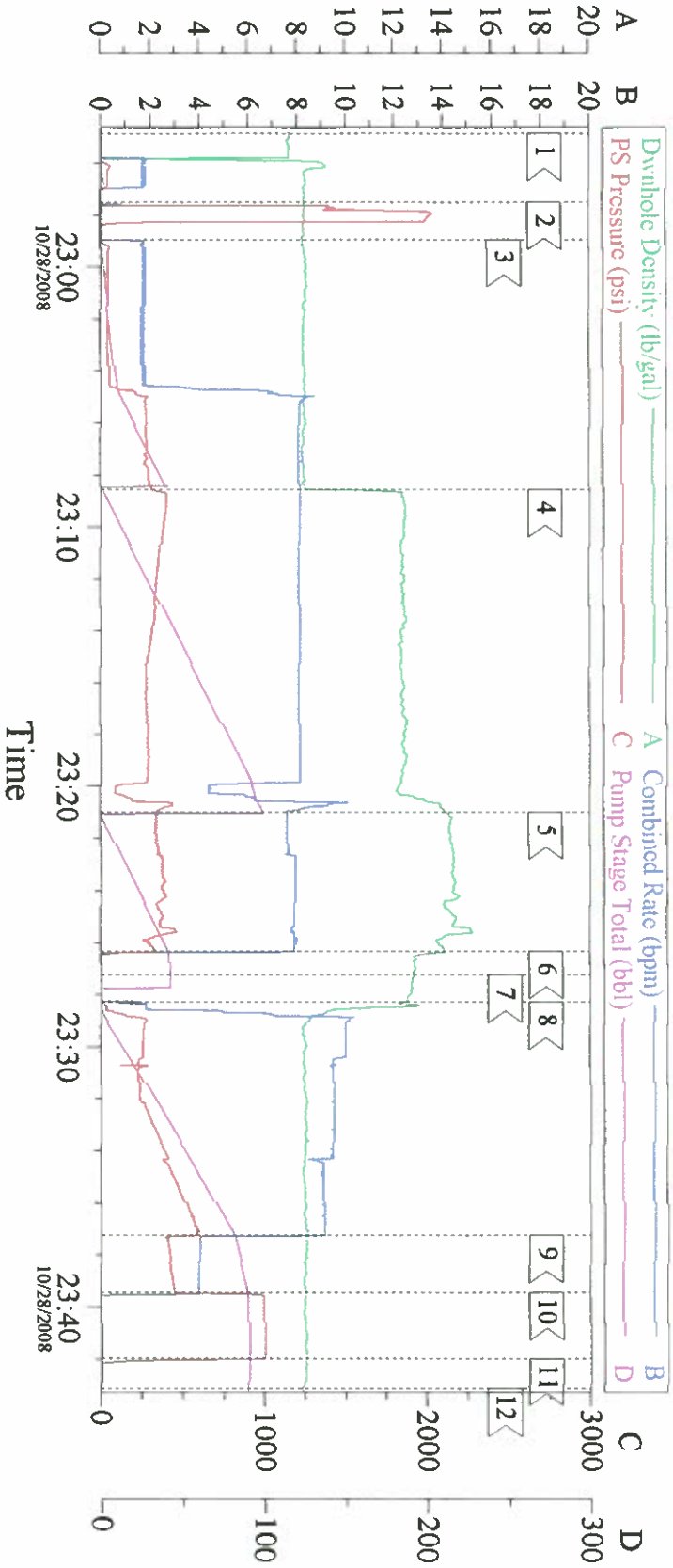
SUMMIT Version: 7.20.130

Wednesday, October 29, 2008 12:11:00

Activity Description	Date/Time	Cht #	Rate bbl/min	Volume bbl		Pressure psig		Comments
				Stage	Total	Tubing	Casing	
Drop Top Plug	10/28/2008 23:27							PLUG LAUNCHED
Pump Displacement	10/28/2008 23:28		10				591.0	FRESH WATER
Slow Rate	10/28/2008 23:37		4	81			400.0	
Bump Plug	10/28/2008 23:39		4	91.6			455.0	PRESSURED UP TO 1010 PSI
Check Floats	10/28/2008 23:41							FLOATS HELD.
End Job	10/28/2008 23:43							PIPE WAS NOT MOVED DURING JOB. GOOD CIRCULATION THROUGH OUT JOB. 30 BBLs OF CEMENT TO SURFACE.
Post-Job Safety Meeting (Pre Rig-Down)	10/28/2008 23:45							ATTENDED BY ENTIRE HES CREW
Rig-Down Equipment	10/28/2008 23:55							
Depart Location Safety Meeting	10/29/2008 01:20							ATTENDED BY ENTIRE HES CREW
Crew Leave Location	10/29/2008 01:30							THANK YOU FOR USING HALLIBURTON CEMENT, JASON GALLEGOS AND CREW.

X

PXP 8 5/8" SURFACE



Event Log

1	START JOB	22:54:53	2	TEST LINES	22:57:33	3	H2O SPACER	22:58:58
4	LEAD CEMENT	23:08:35	5	TAIL CEMENT	23:20:58	6	SHUT DOWN	23:26:20
7	DROP PLUG	23:27:15	8	H2O DISPLACEMENT	23:28:18	9	SLOW RATE	23:37:14
10	BUMP PLUG	23:39:25	11	CHECK FLOATS	23:41:56	12	END JOB	23:43:07

Customer:	PXP	Job Date:	10/28/08	Ticket #:	6275717
Well Name:	MCDANIEL	Well #:	14-4C	ADC Used:	YES
Pump Truck/Operator:	ELITE 9/ERIC CARTER	Company Rep:	CURT CLAUSSEN	Cementler:	JASON GALLEGOS

CemWin v1.7.2
29-Oct-08 00:00