

HALLIBURTON

**PLAINS EXPLORATION & PRODUCTION CO
717 TEXAS ST STE 2100
HOUSTON, Texas**

MC DANIEL 14-4A

GREYWOLF 18

Post Job Summary **Cement Surface Casing**

Prepared for: John Turner
Date Prepared: 9/30/2008
Version: 1

Service Supervisor: MOORE, ALEX

Submitted by: MOORE, ALEX

HALLIBURTON

The Road to Excellence Starts with Safety

Sold To #: 339275	Ship To #: 339275	Quote #:	Sales Order #: 6196010
Customer: PLAINS EXPLORATION & PRODUCTION CO		Customer Rep: John Turner	
Well Name: MC DANIEL		Well #: 14-4A	API/UWI #:
Field: PICEANCE	City (SAP): HOUSTON	County/Parish: Garfield	State: Colorado
Contractor: GREYWOLF 18		Rig/Platform Name/Num: GREYWOLF 18	
Job Purpose: Cement Surface Casing			
Well Type: Development Well		Job Type: Cement Surface Casing	
Sales Person: DUNNING, DUSTIN		Srvc Supervisor: MOORE, ALEX	MBU ID Emp #: 158427

Job Personnel

HES Emp Name	Exp Hrs	Emp #	HES Emp Name	Exp Hrs	Emp #	HES Emp Name	Exp Hrs	Emp #
ARNOLD, EDWARD John	17	439784	DANIEL, EVERETT Dean	17	337325	JONES, CHRISTOPHER E	17	343111
MOORE, ALEX Vincent	17	158427						

Equipment

HES Unit #	Distance-1 way	HES Unit #	Distance-1 way	HES Unit #	Distance-1 way	HES Unit #	Distance-1 way
10025029	125 mile	10025025	125 mile	10038849C	125 mile	10638378	125 mile
111139330		11139328					
10804487	125 mile						

Job Hours

Date	On Location Hours	Operating Hours	Date	On Location Hours	Operating Hours	Date	On Location Hours	Operating Hours
9/30/2008	17	1.5						
TOTAL	17	1.5	<i>Total is the sum of each column separately</i>					

Job

Formation Name	Formation Depth (MD) Top	Bottom	Form Type	Job depth MD	Job Depth TVD	Water Depth	Perforation Depth (MD) From	To
			BHST	1543. ft	1543. ft			
						Wk Ht Above Floor		5. ft

Job Times

Date	Time	Time Zone
29 - Sep - 2008	23:30	MST
23 - Sep - 2008	05:00	MST
30 - Sep - 2008	20:39	MST
21 - May - 2008	21:55	MST
30 - Sep - 2008	23:33	MST

Well Data

Description	New / Used	Max pressure psig	Size in	ID in	Weight lbm/ft	Thread	Grade	Top MD ft	Bottom MD ft	Top TVD ft	Bottom TVD ft
-------------	------------	-------------------	---------	-------	---------------	--------	-------	-----------	--------------	------------	---------------

Sales/Rental/3rd Party (HES)

Description	Qty	Qty uom	Depth	Supplier
PLUG,CMTG,TOP,8 5/8,HWE,7.20 MIN/8.09 MA	1	EA		

Tools and Accessories

Type	Size	Qty	Make	Depth	Type	Size	Qty	Make	Depth	Type	Size	Qty	Make
Guide Shoe					Packer					Top Plug	8.625	1	HES
Float Shoe					Bridge Plug					Bottom Plug			
Float Collar					Retainer					SSR plug set			
Insert Float										Plug Container	8.625	1	HES
Stage Tool										Centralizers			

Miscellaneous Materials

Gelling Agt	Conc	Surfactant	Conc	Acid Type	Qty	Conc	%
Treatment Fld	Conc	Inhibitor	Conc	Sand Type	Size	Qty	

Fluid Data									
Stage/Plug #: 1									
Fluid #	Stage Type	Fluid Name	Qty	Qty uom	Mixing Density lbm/gal	Yield ft ³ /sk	Mix Fluid Gal/sk	Rate bbl/min	Total Mix Fluid Gal/sk
1	SPACER		20.0	bbl	8.33	.0	.0	2	
2	Lead Cement	VERSACEM (TM) SYSTEM (452010)	240.0	sacks	12.3	2.38	13.75		
	2 %	CAL-SEAL 60, 50 LB BAG (101217146)							
	2 %	ECONOLITE (100001580)							
	0.3 %	VERSASET, 55 LB SK (101376573)							
	5.64 lbm	SALT, 100 LB BAG (100003652)							
	0.125 lbm	POLY-E-FLAKE (101216940)							
	0.25 %	D-AIR 3000 (101007446)							
	13.75 Gal	FRESH WATER							
3	Tail Cement	SWIFTCES (TM) SYSTEM (452990)	200.0	sacks	14.2	1.43	6.88		
4	DISPLACEMENT		92.3	bbl	8.33	.0	.0	8	
Calculated Values		Pressures		Volumes					
Displacement	92.3	Shut In: Instant		Lost Returns	no	Cement Slurry	152.6	Pad	
Top Of Cement	surface	5 Min		Cement Returns	20	Actual Displacement	93.3	Treatment	
Frac Gradient		15 Min		Spacers	20	Load and Breakdown		Total Job	265.9
Rates									
Circulating	7	Mixing	7	Displacement	8	Avg. Job	7.5		
Cement Left In Pipe	Amount	27.92 ft	Reason	Shoe Joint					
Frac Ring # 1 @	ID	Frac ring # 2 @	ID	Frac Ring # 3 @	ID	Frac Ring # 4 @	ID		
The Information Stated Herein Is Correct				Customer Representative Signature					

The Road to Excellence Starts with Safety

Sold To #: 339275		Ship To #: 339275		Quote #:		Sales Order #: 6196010	
Customer: PLAINS EXPLORATION & PRODUCTION CO				Customer Rep: John Turner			
Well Name: MC DANIEL			Well #: 14-4A		API/UWI #:		
Field: PICEANCE		City (SAP): HOUSTON		County/Parish: Garfield		State: Colorado	
Legal Description:							
Lat: N 0 deg. OR N 0 deg. 0 min. 0 secs.				Long: E 0 deg. OR E 0 deg. 0 min. 0 secs.			
Contractor: GREYWOLF 18			Rig/Platform Name/Num: GREYWOLF 18				
Job Purpose: Cement Surface Casing						Ticket Amount:	
Well Type: Development Well			Job Type: Cement Surface Casing				
Sales Person: DUNNING, DUSTIN			Srvc Supervisor: MOORE, ALEX			MBU ID Emp #: 158427	

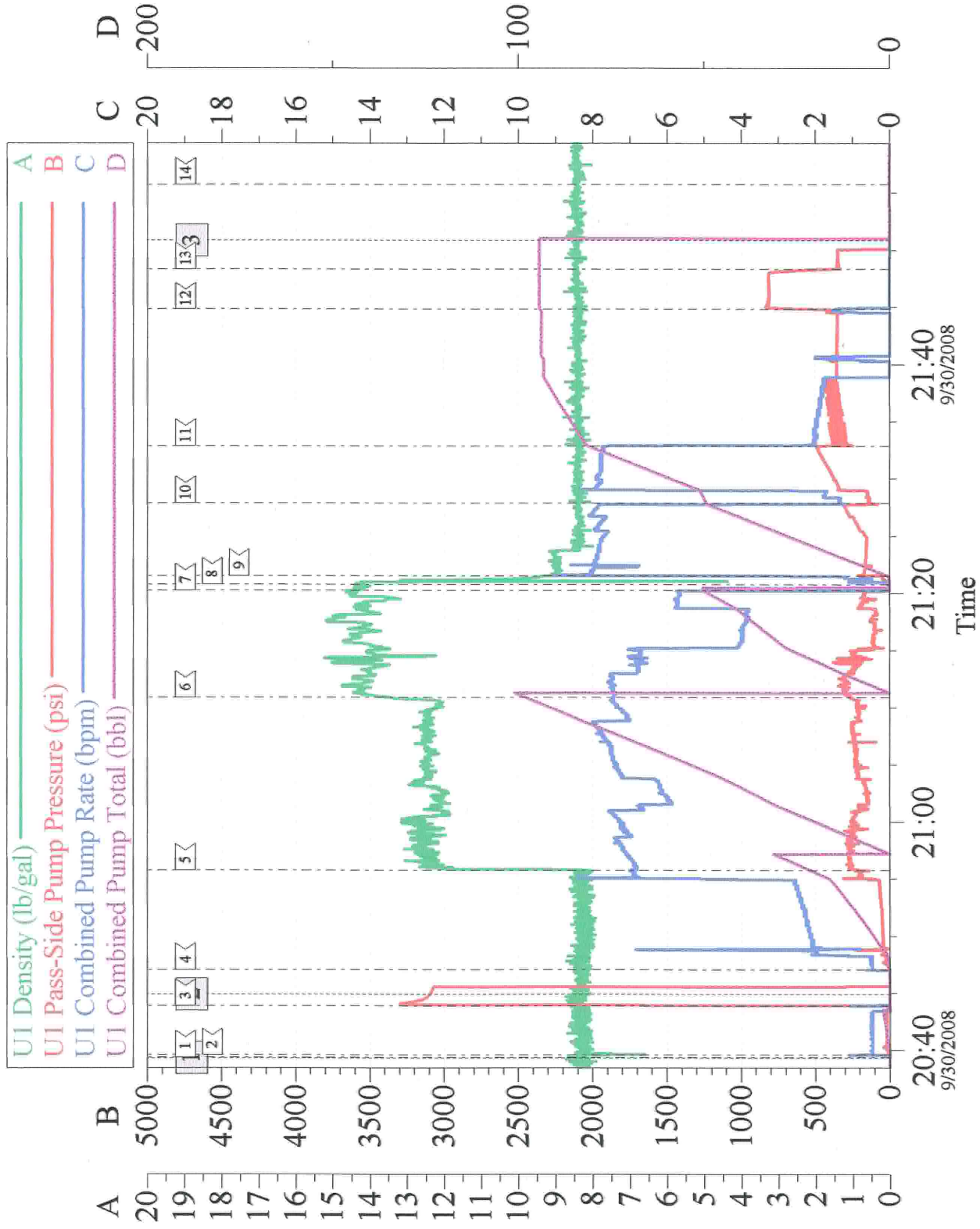
Activity Description	Date/Time	Cht #	Rate bbl/min	Volume bbl		Pressure psig		Comments
				Stage	Total	Tubing	Casing	
Arrive at Location from Service Center	09/30/2008 02:00							1 pickup - 1 CMT pump - 2 660's
Wait on Customer or Customer Sub-Contractor Equip	09/30/2008 02:00							
Assessment Of Location Safety Meeting	09/30/2008 15:45							
Rig-Up Equipment	09/30/2008 19:42							
Pre-Job Safety Meeting	09/30/2008 20:20							
Prime Pumps	09/30/2008 20:39							
Test Lines	09/30/2008 20:43						3300	
Pump Spacer 1	09/30/2008 20:47		2	20			100.0	Fresh Water
Pump Lead Cement	09/30/2008 20:55		7	101.7			230.0	240 sks Versacem - 12.3 ppg - 2.38 cuft/sk - 13.75 mix H2O
Pump Tail Cement	09/30/2008 21:10		7	50.9			300.0	200 sks Swiftcem - 14.2 ppg - 1.43 cuft/sk - 6.88 mix H2O
Shutdown	09/30/2008 21:20							
Drop Top Plug	09/30/2008 21:20							
Pump Displacement	09/30/2008 21:21		8	93.3			380.0	
Slow Rate	09/30/2008 21:32		2					
Bump Plug	09/30/2008 21:44						880.0	
Check Floats	09/30/2008 21:48							Floats held

Cementing Job Log

Activity Description	Date/Time	Cht #	Rate bbl/ min	Volume bbl		Pressure psig		Comments
				Stage	Total	Tubing	Casing	
End Job	09/30/2008 21:55							TD 1543' - TP 1543' - SJ 27.97' - MW 10.0ppg - Hole 12.25"
Pre-Rig Down Safety Meeting	09/30/2008 22:00							Pipe Remained stationary through job and was held down by the rig
Rig-Down Equipment	09/30/2008 22:10							20 bbls cement circulated to surface
Depart Location for Service Center or Other Site	09/30/2008 23:30							Thank you for using Halliburton Grand Junction, Alex Moore and crew

PXP

8 5/8 surface



Customer: PXP	Job Date: 30-Sep-2008	Sales Order #: 6196010
Well Description: McDaniel 14-4A	Job Type: 8 5/8 surface	ADC used: Yes
Customer Rep: John Turner	Supervisor: Alex Moore	Truck/Operator CMT Chris Jones