
PLAINS EXPLORATION & PRODUCTION CO

**MCDANIEL 15-1C
PICEANCE
Mesa County , Colorado**

Cement Surface Casing
13-Sep-2008

Job Site Documents

The Road to Excellence Starts with Safety

Sold To #: 339275	Ship To #: 2680526	Quote #:	Sales Order #: 6167673
Customer: PLAINS EXPLORATION & PRODUCTION CO		Customer Rep: CLAUSSEN, CURT	
Well Name: MCDANIEL	Well #: 15-1C	API/UWI #:	
Field: PICEANCE	City (SAP): DE BEQUE	County/Parish: Mesa	State: Colorado
Contractor: GREYWOLF 18	Rig/Platform Name/Num: GREYWOLF18		
Job Purpose: Cement Surface Casing		Job Type: Cement Surface Casing	
Sales Person: DUNNING, DUSTIN	Srvc Supervisor: HAYES, DIRK	MBU ID Emp #: 336768	

Job Personnel

HES Emp Name	Exp Hrs	Emp #	HES Emp Name	Exp Hrs	Emp #	HES Emp Name	Exp Hrs	Emp #
CARTER, RYAN Dale	2.0	445500	EDWARDS, RICHARD Delbert	2.0	380448	HAYES, DIRK A	2.0	336768
LITTLE, FRANK	2.0	448361	MUHLESTEIN, RYAN	2.0	453609	SHAHNOOSHI, ALIREZA Farooshani	2.0	391960

Equipment

HES Unit #	Distance-1 way	HES Unit #	Distance-1 way	HES Unit #	Distance-1 way	HES Unit #	Distance-1 way
10025025	125 mile	10616651C	125 mile	10719775	125 mile	10722398	125 mile
10724583	125 mile	10973565	125 mile	11027039	125 mile		

Job Hours

Date	On Location Hours	Operating Hours	Date	On Location Hours	Operating Hours	Date	On Location Hours	Operating Hours
09-13-08	2	1						
TOTAL			<i>Total is the sum of each column separately</i>					

Job				Job Times			
Formation Name	Formation Depth (MD)	Top	Bottom	Called Out	Date	Time	Time Zone
				On Location	12 - Sep - 2008	22:00	MST
Form Type			BHST	On Location	13 - Sep - 2008	01:30	MST
Job depth MD	1536. ft		Job Depth TVD	1536. ft	Job Started	13 - Sep - 2008	02:48
Water Depth			Wk Ht Above Floor	5. ft	Job Completed	13 - Sep - 2008	03:38
Perforation Depth (MD)	From		To	Departed Loc	13 - Sep - 2008	05:30	MST

Well Data

Description	New / Used	Max pressure psig	Size in	ID in	Weight lbm/ft	Thread	Grade	Top MD ft	Bottom MD ft	Top TVD ft	Bottom TVD ft
OPEN HOLE				12.25					1536.		
SURFACE CASING	New		8.625	8.017	28.		J-55		1536.		

Sales/Rental/3rd Party (HES)

Description	Qty	Qty uom	Depth	Supplier
PLUG,CMTG, TOP, 8 5/8, HWE, 7.20 MIN/8.09 MA	1	EA		
PORT. DAS W/CEMWIN; ACQUIRE W/HES, ZI	1	JOB		
ADC (AUTO DENSITY CTRL) SYS, /JOB,ZI	1	JOB		

Tools and Accessories

Type	Size	Qty	Make	Depth	Type	Size	Qty	Make	Depth	Type	Size	Qty	Make
Guide Shoe					Packer					Top Plug		1	
Float Shoe					Bridge Plug					Bottom Plug			
Float Collar					Retainer					SSR plug set			
Insert Float										Plug Container		1	
Stage Tool										Centralizers			

Miscellaneous Materials

Gelling Agt	Conc	Surfactant	Conc	Acid Type	Qty	Conc %
Treatment Fid	Conc	Inhibitor	Conc	Sand Type	Size	Qty

Fluid Data									
Stage/Plug #: 1									
Fluid #	Stage Type	Fluid Name	Qty	Qty uom	Mixing Density lbm/gal	Yield ft ³ /sk	Mix Fluid Gal/sk	Rate bbl/min	Total Mix Fluid Gal/sk
1	WATER SPACER		40.0	bbl	.	.0	.0	.0	
2	Lead Cement	VERSACEM (TM) SYSTEM (452010)	240.0	sacks	12.3	2.38	13.75		
	2 %	CAL-SEAL 60, 50 LB BAG (101217146)							
	2 %	ECONOLITE (100001580)							
	0.3 %	VERSASET, 55 LB SK (101376573)							
	5.64 lbm	SALT, 100 LB BAG (100003652)							
	0.125 lbm	POLY-E-FLAKE (101216940)							
	0.25 %	D-AIR 3000 (101007446)							
	13.75 Gal	FRESH WATER							
3	Tail Cement	SWIFTCEM (TM) SYSTEM (452990)	210.0	sacks	14.2	1.43	6.88		
4	DISPLACEMENT		91.9	bbl	.	.0	.0	.0	
Calculated Values		Pressures			Volumes				
Displacement	91.9	Shut In: Instant		Lost Returns	NO	Cement Slurry	155	Pad	
Top Of Cement	SURFACE	5 Min		Cement Returns	31	Actual Displacement	91.8	Treatment	
Frac Gradient		15 Min		Spacers	40	Load and Breakdown		Total Job	
Rates									
Circulating		Mixing	7.5	Displacement	9.5	Avg. Job			8
Cement Left In Pipe	Amount	42 ft	Reason	Shoe Joint					
Frac Ring # 1 @	ID	Frac ring # 2 @	ID	Frac Ring # 3 @	ID	Frac Ring # 4 @	ID		
The Information Stated Herein Is Correct				Customer Representative Signature					

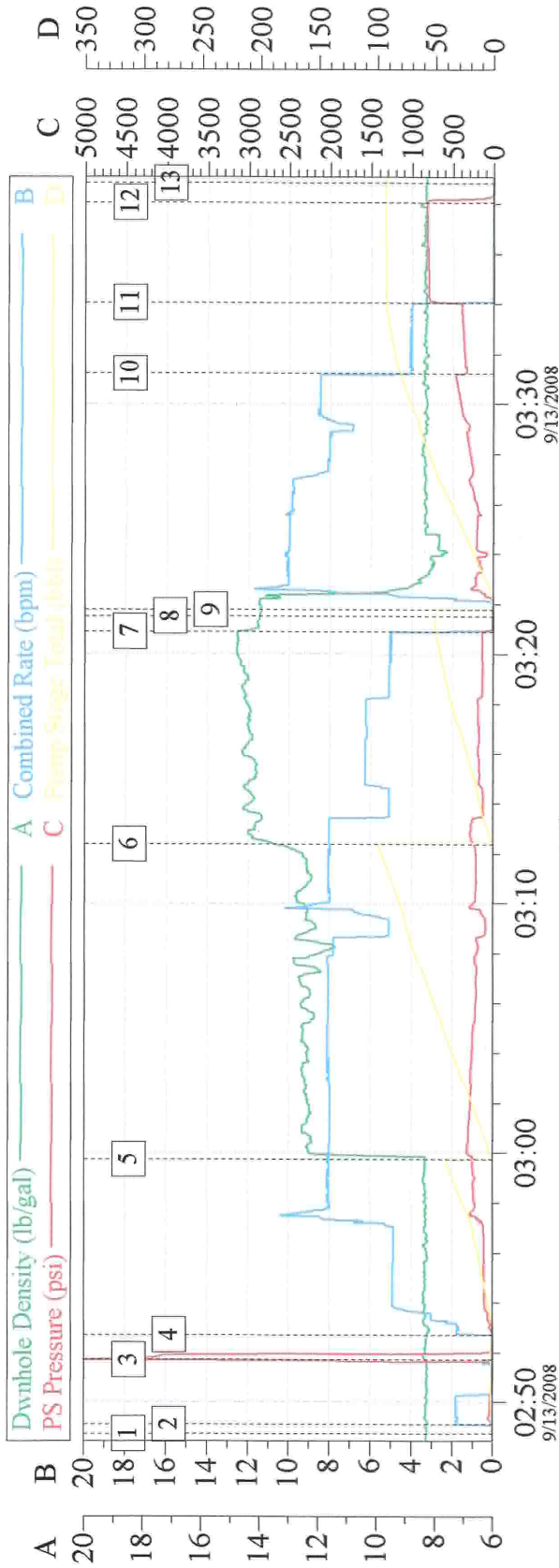
The Road to Excellence Starts with Safety

Sold To #: 339275	Ship To #: 2680526	Quote #:	Sales Order #: 6167673
Customer: PLAINS EXPLORATION & PRODUCTION CO		Customer Rep: CLAUSSEN, CURT	
Well Name: MCDANIEL	Well #: 15-1C	API/UWI #:	
Field: PICEANCE	City (SAP): DE BEQUE	County/Parish: Mesa	State: Colorado
Legal Description:			
Lat: N 0 deg. OR N 0 deg. 0 min. 0 secs.		Long: E 0 deg. OR E 0 deg. 0 min. 0 secs.	
Contractor: GREYWOLF 18		Rig/Platform Name/Num: GREYWOLF18	
Job Purpose: Cement Surface Casing			Ticket Amount:
Well Type: Development Well		Job Type: Cement Surface Casing	
Sales Person: DUNNING, DUSTIN		Srvc Supervisor: HAYES, DIRK	MBU ID Emp #: 336768

Activity Description	Date/Time	Cht #	Rate bbl/min	Volume bbl		Pressure psig		Comments
				Stage	Total	Tubing	Casing	
Call Out	09/12/2008 22:00							
Crew Leave Yard	09/12/2008 23:45							
Arrive at Location from Service Center	09/13/2008 01:30							
Assessment Of Location Safety Meeting	09/13/2008 02:00							
Other	09/13/2008 02:01							
Safety Meeting - Pre Rig-Up	09/13/2008 02:02							
Safety Meeting - Pre Job	09/13/2008 02:30							
Start Job	09/13/2008 02:48							TD 1536, TP 1536, SHOE 29.35, MUD 10
Prime Pumps	09/13/2008 02:49		2		2		51.0	PUMP 2 BBLS AHEAD TO PRIME LINES
Test Lines	09/13/2008 02:51		0.5		0.5		3000.0	
Pump Spacer	09/13/2008 02:52		8		40		206.0	PUMP FRESH H2O AHEAD OF LEAD CEMENT
Pump Lead Cement	09/13/2008 02:59		8		101.7		311.0	240 SKS @ 12.3 YIELD 2.38 W/R 13.75
Pump Tail Cement	09/13/2008 03:12		8		53.5		255.0	210 SKS @ 14.2 YIELD 1.43 W/R 6.88
Shutdown	09/13/2008 03:20							
Drop Top Plug	09/13/2008 03:21							
Pump Displacement	09/13/2008 03:22		10		91.8		560.0	PUMP FRESH H2O FOR DISPLACMENT

Activity Description	Date/Time	Cht #	Rate bbl/min	Volume bbl		Pressure psig		Comments
				Stage	Total	Tubing	Casing	
Slow Rate	09/13/2008 03:31		4		80		315.0	SLOW RATE FROM 10 BBL PER MIN TO 4 BBL PER MIN PER COMPANY MAN
Bump Plug	09/13/2008 03:34		4		91.8		804.0	HOLD PRESSURE FOR 3 MIN PER COMPANY MAN
Check Floats	09/13/2008 03:38							FLOATS HELD
End Job	09/13/2008 03:39							
Other	09/13/2008 03:40							GOOD RETURNS DURING JOB, DID NOT MOVE PIPE DURING JOB
Other	09/13/2008 03:41							31 BBL OF CEMENT TO PIT, CIRCULATED UNTI LHALLIBURTON WAS RIGGED UP
Other	09/13/2008 03:42							THANK YOU FROM HALLIBURTON DIRK HAYES AND CREW

8 5/8" SURFACE



Event Log

1	start job	02:48:45	2	pump 2 bbls ahead to prime lines	02:49:07
3	test lines	02:51:43	4	pump spacer	02:52:43
5	pump lead cement	02:59:44	6	pump tail cement	03:12:23
7	shut down / wash lines	03:20:54	8	drop top plug	03:21:31
9	pump displacement	03:21:47	10	slow rate	03:31:14
11	bump top plug	03:34:03	12	check floats	03:38:04
13	end job	03:38:50			

Customer: PXP	Job Date: 09-13-08	Ticket #: 6167673
Truck # Elite # 4	Operator Rick Edwards	ADC USED YES
Cementier Dirk Hayes	Co Rep Curt Claussen	Lease Medaniel 15-1C