



End of Well Report

Prepared for



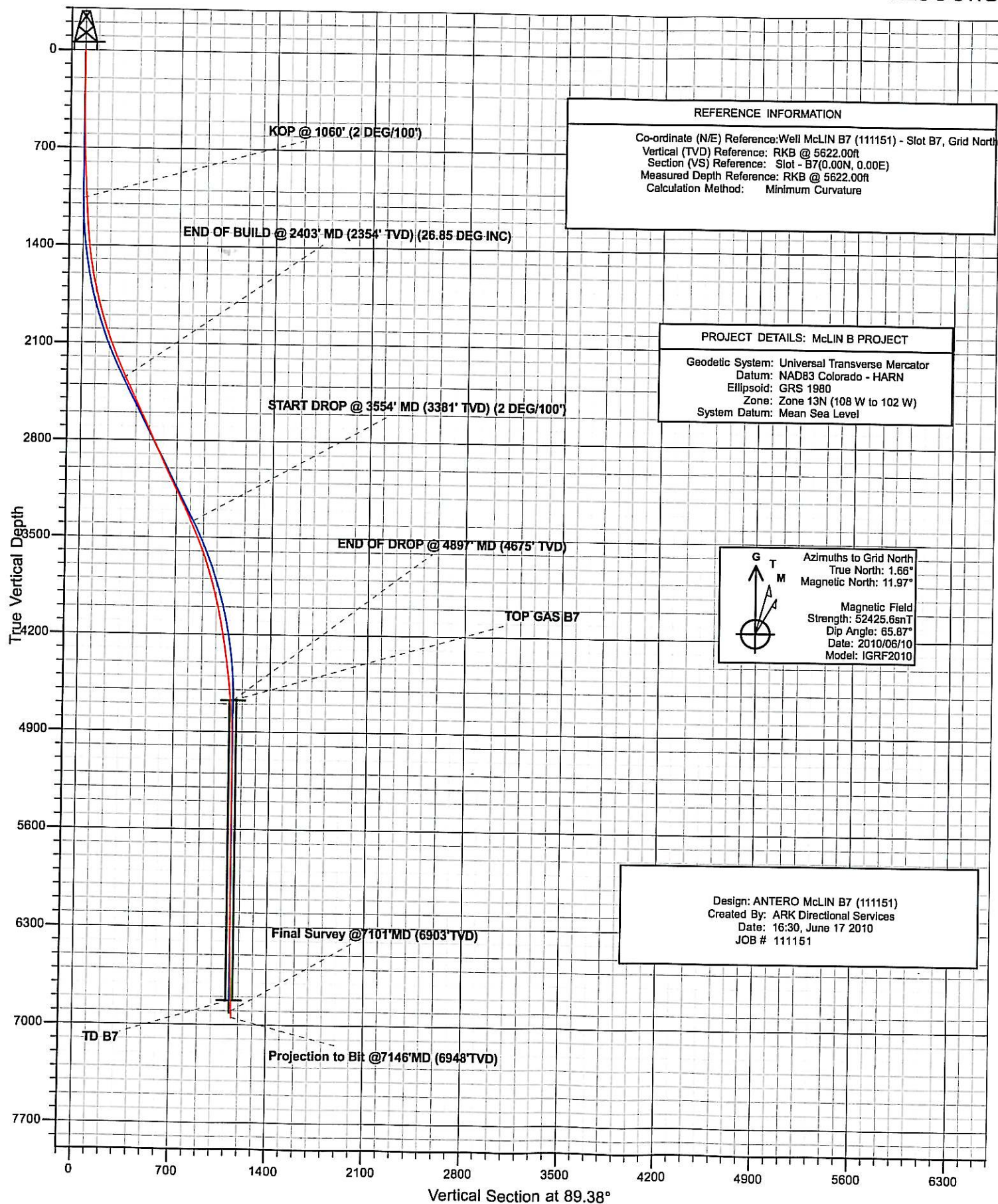
McLin B7

June 17, 2010

ARK Directional Services Inc
191 University Blvd, # 601
Denver, CO 80206



ANTERO RESOURCES
ANTERO McLIN B7
PLANNED VS ACTUAL



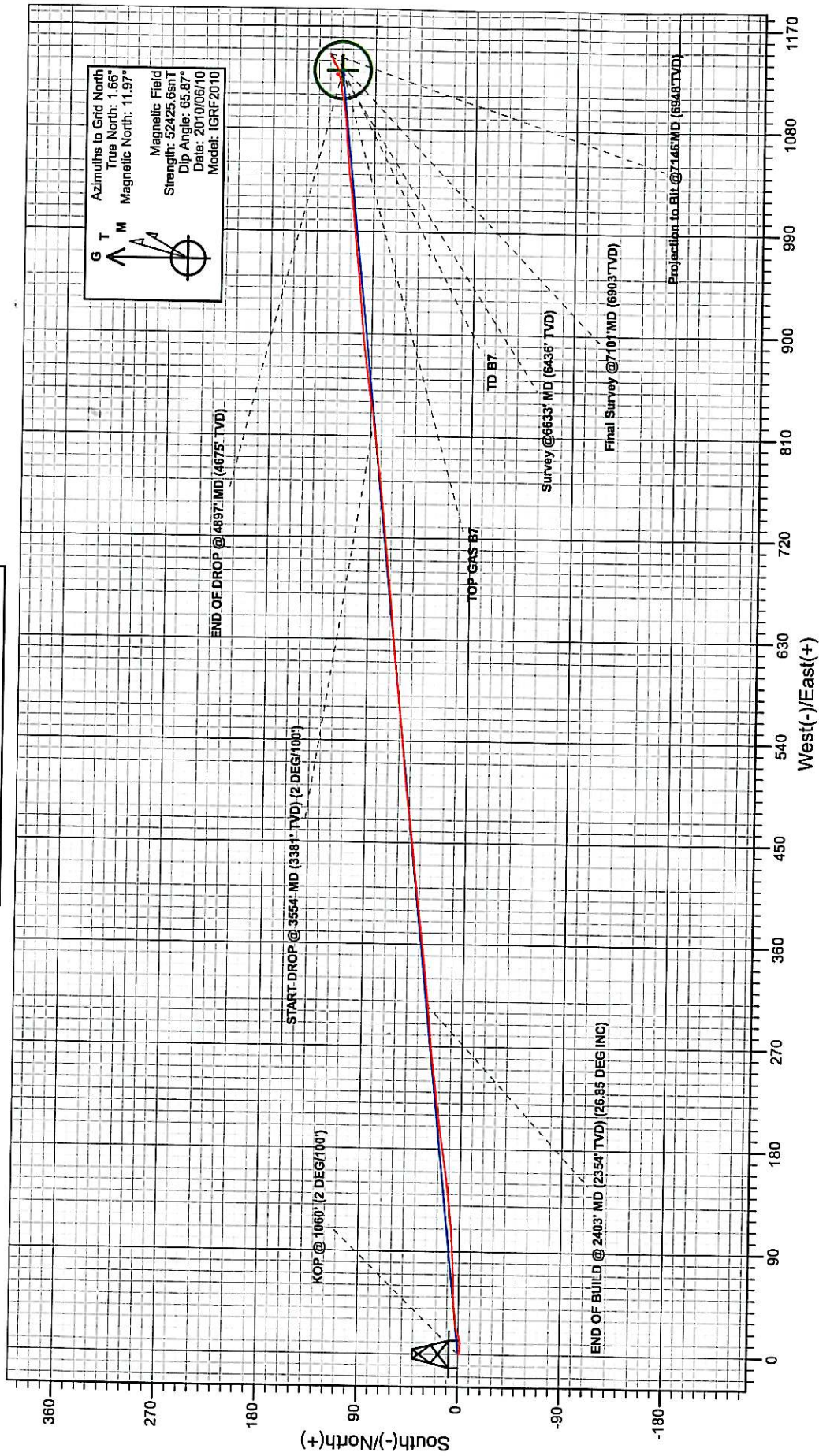


ANTERO RESOURCES



Project: McLIN B PROJECT
Site: FRONTIER 12
Well: McLIN B7 (111151)
Wellbore: ANTERO McLIN B7
Design: ANTERO McLIN B7
JOB # 111151

PLAN VIEW



PROJECT DETAILS: McLIN B PROJECT

Geodetic System: Universal Transverse Mercator
Datum: NAD83 Colorado - HARN
Ellipsoid: GRS 1980
Zone: Zone 13N (108 W to 102 W)
System Datum: Mean Sea Level

REFERENCE INFORMATION

Co-ordinate (N/E) Reference: McLIN B7 (111151), Grid North
Vertical (TVD) Reference: RKB @ 5622.00ft
Section (NS) Reference: Slot - B7(0.00N, 0.00E)
Measured Depth Reference: RKB @ 5622.00ft
Calculation Method: Minimum Curvature

McLIN B7 (111151)/ANTERO McLIN B7
Created By: ARK Directional Services
Date: 16:45, June 17 2010

ANTERO RESOURCES

McLIN B PROJECT

FRONTIER 12

McLIN B7 (111151) - Slot B7

Design: ANTERO McLIN B7

Survey Report - Geographic

18 June, 2010

ARK Directional Services

Survey Report - Geographic

Company:	ANTERO RESOURCES	Local Co-ordinate Reference:	Well McLIN B7 (111151) - Slot B7
Project:	McLIN B PROJECT	TVD Reference:	RKB @ 5622.00ft
Site:	FRONTIER 12	MD Reference:	RKB @ 5622.00ft
Well:	McLIN B7 (111151)	North Reference:	Grid
Wellbore:	ANTERO McLIN B7	Survey Calculation Method:	Minimum Curvature
Design:	ANTERO McLIN B7	Database:	EDM SERVER DB

Project	McLIN B PROJECT		
Map System:	Universal Transverse Mercator	System Datum:	Mean Sea Level
Geo Datum:	NAD83 Colorado - HARN		
Map Zone:	Zone 13N (108 W to 102 W)		

Site	FRONTIER 12		
Site Position:		Northing:	14,366,636.75 usft
From:	Lat/Long	Easting:	904,982.97 usft
Position Uncertainty:	0.00 ft	Slot Radius:	13.20 in
		Latitude:	39° 31' 51.798 N
		Longitude:	107° 36' 29.317 W
		Grid Convergence:	-1.66 °

Well	McLIN B7 (111151) - Slot B7		
Well Position	+N/-S	0.00 ft	Northing: 14,366,597.22 usft
	+E/-W	0.00 ft	Easting: 905,033.40 usft
Position Uncertainty	0.00 ft	Wellhead Elevation:	ft
		Latitude:	39° 31' 51.422 N
		Longitude:	107° 36' 28.659 W
		Ground Level:	5,598.00 ft

Wellbore	ANTERO McLIN B7		
Magnetics	Model Name	Sample Date	Declination (°)
	IGRF2010	2010/06/10	10.31
			Dip Angle (°) 65.87
			Field Strength (nT) 52,426

Design	ANTERO McLIN B7		
Audit Notes:			
Version:	1.0	Phase:	ACTUAL
		Tie On Depth:	0.00
Vertical Section:	Depth From (TVD)	+N/-S	+E/-W
	(ft)	(ft)	(ft)
	0.00	0.00	0.00
			Direction (°) 89.38

Survey Program	Date 2010/06/17		
From (ft)	To (ft)	Survey (Wellbore)	Tool Name
162.70	974.00	Antero Mclin B7 Survey (ANTERO McLIN	MWD
1,059.00	5,122.00	Antero Mclin B7 Survey1 (ANTERO McLIN	MWD
5,216.00	7,146.00	Antero Mclin B7 06-15-2010_0600 (ANTER	MWD
			Description
			MWD - Standard
			MWD - Standard
			MWD - Standard

Survey									
Measured Depth (ft)	Inclination (°)	Azimuth (°)	Vertical Depth (ft)	+N/-S (ft)	+E/-W (ft)	Map Northing (usft)	Map Easting (usft)	Latitude	Longitude
0.00	0.00	0.00	0.00	0.00	0.00	14,366,597.22	905,033.40	39° 31' 51.422 N	107° 36' 28.659 W
162.70	0.53	144.60	162.70	-0.61	0.44	14,366,596.61	905,033.84	39° 31' 51.416 N	107° 36' 28.653 W
256.39	0.09	219.57	256.39	-1.02	0.64	14,366,596.20	905,034.04	39° 31' 51.412 N	107° 36' 28.650 W
349.56	0.26	98.37	349.56	-1.11	0.80	14,366,596.11	905,034.20	39° 31' 51.411 N	107° 36' 28.648 W
441.81	1.23	100.83	441.80	-1.33	1.98	14,366,595.89	905,035.38	39° 31' 51.409 N	107° 36' 28.633 W
535.54	0.97	90.37	535.51	-1.52	3.76	14,366,595.70	905,037.16	39° 31' 51.408 N	107° 36' 28.610 W
627.08	1.49	83.60	627.03	-1.39	5.72	14,366,595.83	905,039.12	39° 31' 51.410 N	107° 36' 28.586 W
721.64	1.93	99.86	721.55	-1.53	8.51	14,366,595.69	905,041.91	39° 31' 51.409 N	107° 36' 28.550 W
813.72	2.10	77.10	813.57	-1.42	11.68	14,366,595.80	905,045.08	39° 31' 51.411 N	107° 36' 28.509 W
906.21	2.90	69.50	905.97	-0.22	15.53	14,366,597.00	905,048.93	39° 31' 51.424 N	107° 36' 28.461 W

ARK Directional Services

Survey Report - Geographic

Company:	ANTERO RESOURCES	Local Co-ordinate Reference:	Well McLIN B7 (111151) - Slot B7
Project:	McLIN B PROJECT	TVD Reference:	RKB @ 5622.00ft
Site:	FRONTIER 12	MD Reference:	RKB @ 5622.00ft
Well:	McLIN B7 (111151)	North Reference:	Grid
Wellbore:	ANTERO McLIN B7	Survey Calculation Method:	Minimum Curvature
Design:	ANTERO McLIN B7	Database:	EDM SERVER DB

Survey									
Measured Depth (ft)	Inclination (°)	Azimuth (°)	Vertical Depth (ft)	+N/-S (ft)	+E/-W (ft)	Map Northing (usft)	Map Easting (usft)	Latitude	Longitude
974.00	3.16	72.18	973.67	0.95	18.91	14,366,598.17	905,052.31	39° 31' 51.437 N	107° 36' 28.418 W
Survey @974' MD (974' TVD)									
1,059.00	3.34	73.23	1,058.53	2.38	23.51	14,366,599.60	905,056.91	39° 31' 51.452 N	107° 36' 28.360 W
1,154.00	3.78	91.16	1,153.35	3.12	29.29	14,366,600.34	905,062.69	39° 31' 51.461 N	107° 36' 28.287 W
1,248.00	4.04	80.61	1,247.13	3.60	35.66	14,366,600.82	905,069.06	39° 31' 51.468 N	107° 36' 28.206 W
1,343.00	5.89	85.97	1,341.77	4.48	43.82	14,366,601.71	905,077.22	39° 31' 51.479 N	107° 36' 28.102 W
1,437.00	7.12	89.67	1,435.17	4.86	54.46	14,366,602.08	905,087.86	39° 31' 51.485 N	107° 36' 27.966 W
1,500.00	8.61	88.79	1,497.57	4.98	63.08	14,366,602.20	905,096.48	39° 31' 51.489 N	107° 36' 27.856 W
1,563.00	9.67	85.89	1,559.77	5.46	73.07	14,366,602.68	905,106.47	39° 31' 51.497 N	107° 36' 27.729 W
1,626.00	11.34	87.20	1,621.71	6.14	84.54	14,366,603.36	905,117.94	39° 31' 51.507 N	107° 36' 27.583 W
1,689.00	12.83	87.47	1,683.32	6.75	97.71	14,366,603.97	905,131.11	39° 31' 51.516 N	107° 36' 27.415 W
1,752.00	13.36	83.95	1,744.68	7.83	111.94	14,366,605.05	905,145.34	39° 31' 51.531 N	107° 36' 27.234 W
1,815.00	14.50	84.39	1,805.82	9.37	127.03	14,366,606.59	905,160.43	39° 31' 51.551 N	107° 36' 27.042 W
1,878.00	15.73	83.16	1,866.64	11.15	143.36	14,366,608.37	905,176.76	39° 31' 51.573 N	107° 36' 26.835 W
1,941.00	17.14	81.49	1,927.07	13.54	161.02	14,366,610.77	905,194.42	39° 31' 51.602 N	107° 36' 26.610 W
2,004.00	18.28	81.14	1,987.08	16.44	179.96	14,366,613.66	905,213.36	39° 31' 51.636 N	107° 36' 26.370 W
2,099.00	20.30	83.25	2,076.74	20.67	211.05	14,366,617.89	905,244.45	39° 31' 51.686 N	107° 36' 25.975 W
2,193.00	21.88	82.46	2,164.45	24.89	244.61	14,366,622.11	905,278.01	39° 31' 51.738 N	107° 36' 25.548 W
2,288.00	23.03	85.36	2,252.24	28.71	280.68	14,366,625.93	905,314.08	39° 31' 51.786 N	107° 36' 25.090 W
2,382.00	25.14	84.04	2,338.06	32.27	318.87	14,366,629.50	905,352.27	39° 31' 51.832 N	107° 36' 24.604 W
2,477.00	25.84	83.25	2,423.81	36.80	359.50	14,366,634.02	905,392.90	39° 31' 51.888 N	107° 36' 24.087 W
2,571.00	25.31	83.16	2,508.60	41.60	399.80	14,366,638.83	905,433.20	39° 31' 51.947 N	107° 36' 23.575 W
2,666.00	24.87	84.30	2,594.63	46.01	439.84	14,366,643.23	905,473.24	39° 31' 52.002 N	107° 36' 23.066 W
2,760.00	24.61	82.55	2,680.01	50.51	478.92	14,366,647.73	905,512.32	39° 31' 52.058 N	107° 36' 22.569 W
2,854.00	25.31	84.66	2,765.23	54.92	518.33	14,366,652.14	905,551.73	39° 31' 52.113 N	107° 36' 22.068 W
2,944.00	24.30	84.30	2,846.93	58.55	555.91	14,366,655.77	905,589.31	39° 31' 52.159 N	107° 36' 21.590 W
3,043.00	24.61	83.51	2,937.04	62.90	596.66	14,366,660.12	905,630.06	39° 31' 52.214 N	107° 36' 21.072 W
3,138.00	25.60	85.18	3,023.07	66.86	636.77	14,366,664.08	905,670.17	39° 31' 52.264 N	107° 36' 20.562 W
3,232.00	25.84	84.04	3,107.76	70.69	677.38	14,366,667.91	905,710.78	39° 31' 52.314 N	107° 36' 20.045 W
3,327.00	26.72	84.30	3,192.94	74.96	719.23	14,366,672.19	905,752.63	39° 31' 52.368 N	107° 36' 19.513 W
3,421.00	25.31	83.51	3,277.41	79.33	760.22	14,366,676.56	905,793.62	39° 31' 52.423 N	107° 36' 18.992 W
3,516.00	24.30	82.80	3,363.65	84.08	799.79	14,366,681.30	905,833.19	39° 31' 52.481 N	107° 36' 18.489 W
3,611.00	23.20	81.58	3,450.60	89.27	837.70	14,366,686.49	905,871.10	39° 31' 52.543 N	107° 36' 18.007 W
3,705.00	22.06	82.55	3,537.36	94.27	873.52	14,366,691.49	905,906.92	39° 31' 52.603 N	107° 36' 17.552 W
3,799.00	19.42	84.83	3,625.26	97.97	906.59	14,366,695.19	905,939.99	39° 31' 52.649 N	107° 36' 17.132 W
3,894.00	17.23	85.10	3,715.44	100.59	936.34	14,366,697.81	905,969.74	39° 31' 52.683 N	107° 36' 16.753 W
3,988.00	15.73	83.69	3,805.58	103.18	962.88	14,366,700.40	905,996.28	39° 31' 52.716 N	107° 36' 16.416 W
4,083.00	15.12	84.48	3,897.15	105.79	988.01	14,366,703.01	906,021.41	39° 31' 52.749 N	107° 36' 16.096 W
4,177.00	12.66	84.39	3,988.40	107.98	1,010.47	14,366,705.20	906,043.87	39° 31' 52.777 N	107° 36' 15.811 W
4,271.00	11.43	81.84	4,080.33	110.31	1,029.94	14,366,707.53	906,063.34	39° 31' 52.806 N	107° 36' 15.563 W
4,366.00	9.93	85.18	4,173.68	112.33	1,047.42	14,366,709.55	906,080.82	39° 31' 52.831 N	107° 36' 15.341 W
4,461.00	8.96	84.57	4,267.39	113.72	1,062.95	14,366,710.94	906,096.35	39° 31' 52.849 N	107° 36' 15.143 W
4,555.00	7.56	86.85	4,360.41	114.75	1,076.41	14,366,711.97	906,109.81	39° 31' 52.863 N	107° 36' 14.972 W
4,650.00	7.38	84.66	4,454.61	115.66	1,088.73	14,366,712.88	906,122.12	39° 31' 52.876 N	107° 36' 14.815 W
4,744.00	6.60	79.90	4,547.91	117.17	1,100.05	14,366,714.39	906,133.45	39° 31' 52.894 N	107° 36' 14.671 W
4,839.00	5.40	78.68	4,642.39	119.01	1,109.81	14,366,716.23	906,143.21	39° 31' 52.915 N	107° 36' 14.548 W
4,873.35	5.07	80.36	4,676.59	119.58	1,112.89	14,366,716.80	906,146.29	39° 31' 52.921 N	107° 36' 14.509 W
TOP GAS B7									
4,933.00	4.50	83.86	4,736.04	120.27	1,117.82	14,366,717.49	906,151.21	39° 31' 52.930 N	107° 36' 14.446 W
5,028.00	2.99	76.83	4,830.83	121.23	1,123.94	14,366,718.45	906,157.33	39° 31' 52.941 N	107° 36' 14.368 W
5,122.00	1.14	29.37	4,924.77	122.61	1,126.78	14,366,719.83	906,160.18	39° 31' 52.955 N	107° 36' 14.333 W
Survey @ 5122' HD (4924' TVD)									
5,216.00	0.53	37.99	5,018.76	123.76	1,127.51	14,366,720.98	906,160.91	39° 31' 52.967 N	107° 36' 14.324 W
5,311.00	0.62	53.37	5,113.76	124.42	1,128.19	14,366,721.64	906,161.59	39° 31' 52.973 N	107° 36' 14.315 W
5,405.00	0.18	271.77	5,207.75	124.72	1,128.45	14,366,721.95	906,161.85	39° 31' 52.977 N	107° 36' 14.312 W

ARK Directional Services

Survey Report - Geographic

Company:	ANTERO RESOURCES	Local Co-ordinate Reference:	Well McLIN B7 (111151) - Slot B7
Project:	McLIN B PROJECT	TVD Reference:	RKB @ 5622.00ft
Site:	FRONTIER 12	MD Reference:	RKB @ 5622.00ft
Well:	McLIN B7 (111151)	North Reference:	Grid
Wellbore:	ANTERO McLIN B7	Survey Calculation Method:	Minimum Curvature
Design:	ANTERO McLIN B7	Database:	EDM SERVER DB

Survey									
Measured Depth (ft)	Inclination (°)	Azimuth (°)	Vertical Depth (ft)	+N/-S (ft)	+E/-W (ft)	Map Northing (usft)	Map Easting (usft)	Latitude	Longitude
5,499.00	0.18	4.24	5,301.75	124.88	1,128.31	14,366,722.10	906,161.71	39° 31' 52.978 N	107° 36' 14.314 W
5,594.00	0.88	188.98	5,396.75	124.30	1,128.21	14,366,721.53	906,161.61	39° 31' 52.972 N	107° 36' 14.315 W
5,688.00	0.53	139.06	5,490.74	123.26	1,128.38	14,366,720.48	906,161.78	39° 31' 52.962 N	107° 36' 14.312 W
5,783.00	0.18	313.08	5,585.74	123.03	1,128.56	14,366,720.25	906,161.96	39° 31' 52.960 N	107° 36' 14.310 W
5,878.00	0.70	26.47	5,680.74	123.65	1,128.71	14,366,720.88	906,162.11	39° 31' 52.966 N	107° 36' 14.308 W
5,972.00	0.62	273.36	5,774.74	124.20	1,128.46	14,366,721.42	906,161.86	39° 31' 52.971 N	107° 36' 14.312 W
6,067.00	0.26	336.29	5,869.74	124.43	1,127.86	14,366,721.65	906,161.26	39° 31' 52.973 N	107° 36' 14.320 W
6,161.00	0.18	88.70	5,963.73	124.62	1,127.92	14,366,721.85	906,161.32	39° 31' 52.975 N	107° 36' 14.319 W
6,256.00	0.88	183.18	6,058.73	123.90	1,128.03	14,366,721.12	906,161.43	39° 31' 52.968 N	107° 36' 14.317 W
6,350.00	0.88	144.33	6,152.72	122.59	1,128.41	14,366,719.81	906,161.81	39° 31' 52.955 N	107° 36' 14.312 W
6,445.00	0.97	107.95	6,247.71	121.75	1,129.60	14,366,718.97	906,163.00	39° 31' 52.948 N	107° 36' 14.296 W
6,539.00	0.26	62.86	6,341.70	121.60	1,130.55	14,366,718.82	906,163.95	39° 31' 52.946 N	107° 36' 14.284 W
6,633.00	1.58	54.16	6,435.69	122.46	1,131.79	14,366,719.68	906,165.19	39° 31' 52.955 N	107° 36' 14.269 W
Survey @6633' MD (6436' TVD)									
6,728.00	2.02	59.26	6,530.64	124.08	1,134.29	14,366,721.30	906,167.69	39° 31' 52.972 N	107° 36' 14.237 W
6,822.00	1.67	54.95	6,624.59	125.72	1,136.84	14,366,722.94	906,170.23	39° 31' 52.989 N	107° 36' 14.206 W
6,917.00	1.67	65.93	6,719.55	127.08	1,139.23	14,366,724.30	906,172.63	39° 31' 53.003 N	107° 36' 14.175 W
7,011.00	1.76	67.87	6,813.51	128.18	1,141.82	14,366,725.40	906,175.22	39° 31' 53.014 N	107° 36' 14.143 W
7,022.05	1.79	67.38	6,824.56	128.31	1,142.14	14,366,725.53	906,175.54	39° 31' 53.016 N	107° 36' 14.139 W
TD B7									
7,101.00	2.02	64.35	6,903.46	129.39	1,144.53	14,366,726.61	906,177.93	39° 31' 53.027 N	107° 36' 14.109 W
Final Survey @7101'MD (6903'TVD)									
7,146.00	2.02	64.35	6,948.43	130.07	1,145.96	14,366,727.29	906,179.36	39° 31' 53.034 N	107° 36' 14.091 W
Projection to Bit @7146'MD (6948'TVD)									

Design Targets									
Target Name	Dip Angle (°)	Dip Dir. (°)	TVD (ft)	+N/-S (ft)	+E/-W (ft)	Northing (usft)	Easting (usft)	Latitude	Longitude
- hit/miss target									
- Shape									
TOP GAS B7	0.00	360.00	4,675.00	119.25	1,131.57	14,366,716.47	906,164.97	39° 31' 52.923 N	107° 36' 14.270 W
- actual wellpath misses target center by 18.75ft at 4873.35ft MD (4676.59 TVD, 119.58 N, 1112.89 E)									
- Circle (radius 25.00)									
TD B7	0.00	360.00	6,825.00	119.25	1,131.57	14,366,716.47	906,164.97	39° 31' 52.923 N	107° 36' 14.270 W
- actual wellpath misses target center by 13.92ft at 7022.05ft MD (6824.56 TVD, 128.31 N, 1142.14 E)									
- Circle (radius 25.00)									

Design Annotations				
Measured Depth (ft)	Vertical Depth (ft)	Local Coordinates		Comment
		+N/-S (ft)	+E/-W (ft)	
974.00	973.67	0.95	18.91	Survey @974' MD (974' TVD)
5,122.00	4,924.77	122.61	1,126.78	Survey @ 5122' HD (4924' TVD)
6,633.00	6,435.69	122.46	1,131.79	Survey @6633' MD (6436' TVD)
7,101.00	6,903.46	129.39	1,144.53	Final Survey @7101'MD (6903'TVD)
7,146.00	6,948.43	130.07	1,145.96	Projection to Bit @7146'MD (6948'TVD)

Checked By: _____ Approved By: _____ Date: _____