

ACOUSTIC CEMENT
BOND LOG
4.5"/11.6# CASING

COMPANY BILL BARRETT
CORPORATION
WELL JCJ 21D-21-692

FIELD MAMM CREEK
CNTY GARFIELD STATE CO

COMPANY BILL BARRETT CORPORATION

WELL JCJ 21D-21-692

FIELD MAMM CREEK

COUNTY GARFIELD

STATE COLORADO

LOCATION:

SHL: 1554' FNL & 1299' FWL
BHL: 0205' FNL & 1980' FWL

OTHER SERVICES:
JB/GR 3.781"
@ 7962'

SEC. 21

TWP. 6S

RGE. 92W

PERM. DATUM GROUND LEVEL
LOG MEASURED FROM K.B. 17 FT. ABOVE PERMANENT DATUM
DRILLING MEASURED FROM KELLY BUSHING

ELEV. 5680'
ELEV.: K.B. 5697'
D.F. 5696'
G.L. 5680'

DATE 12-JAN-2009

API#:

05-045-16867

RUN NO.

DEPTH DRILLER

8055'

DEPTH LOGGER

7962'

BITM. LOG INTERVAL

7956'

TOP LOG INTERVAL

3300'

OPEN HOLE SIZE

7.875"

TYPE FLUID

Water Based

DENS. VISC.

8.3

N/A

MAX. REC. TEMP. F

184 DEG FHT.

EST. CEMENT TOP

3916'

TIME WELL READY

ROA

TIME LOGGER ON BITM.

SEE LOG

EQUIP. NO.

14113

LOCATION

GRAND JUNCTION

RECORDED BY

BRUCE MILLER

WITNESSED BY

GARY EITER

BOREHOLE RECORD

BIT FROM TO

SIZE

WT/FT

GRADE

TYPE JOINT

TOP

BOTTOM

SURFACE STRING

9.625"

36#

PROD. STRING

4.500"

11.6

I-80

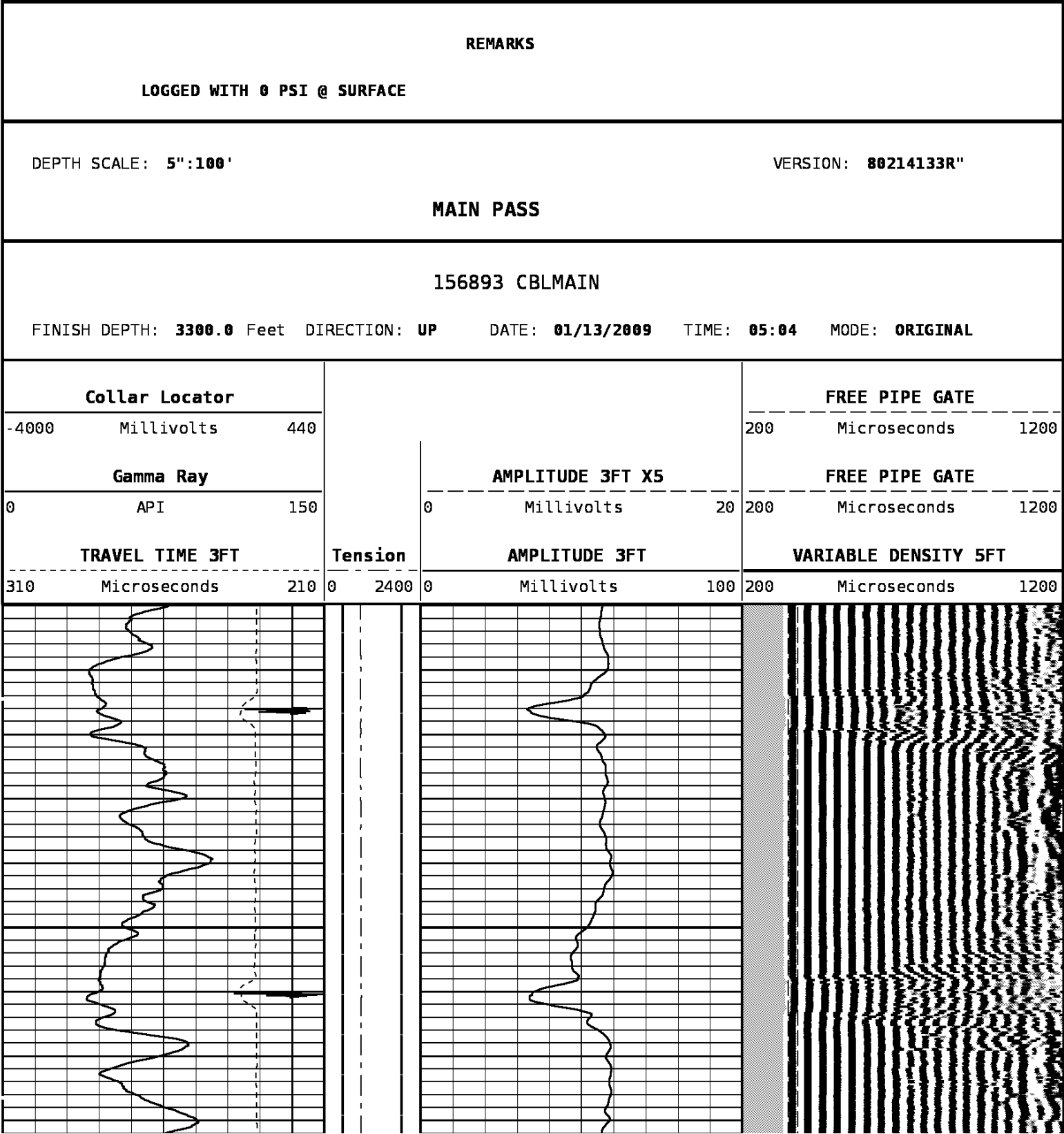
LINER

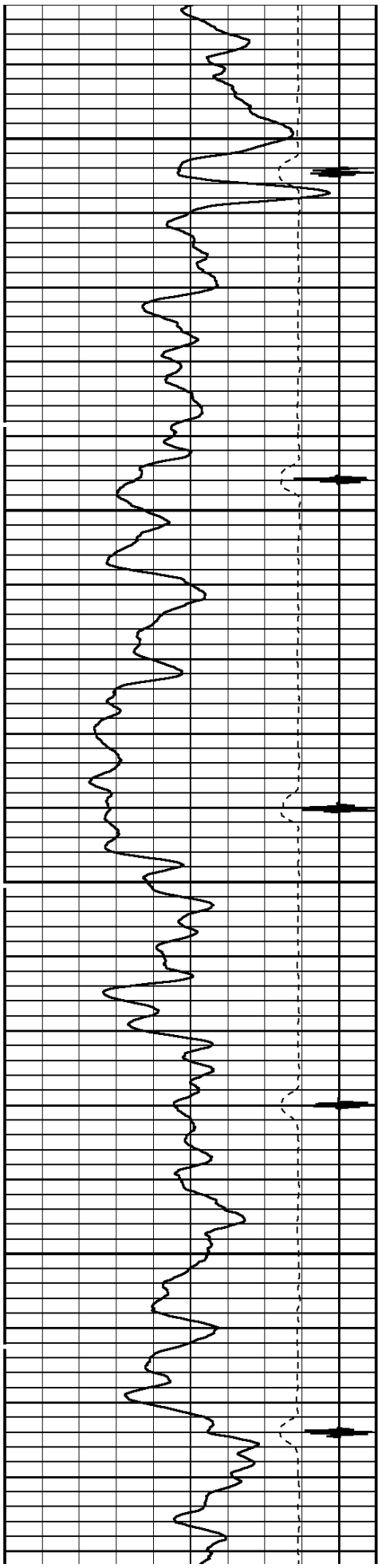
SEE REMARKS

All interpretations of log data are opinions based on inferences from electrical or other measurements. We do not guarantee the accuracy or correctness of any interpretation or recommendation and we shall not be liable or responsible for any loss, cost, damages or expenses incurred or sustained by anyone resulting from any interpretation or recommendation made by any of our employees or agents.

REMARKS Rig: CRANE #15062 Service Order # 156893
LOG WAS CORRELATED -2.2' TO WEATHERFORD TRIPLE COMBO LOG DATED 05-NOV-2008. BHT 184 °F
SHORT JOINTS WERE FOUND @ 4981'-5016', 5894'-5922.5' AND 7616'-7644'.
EST. TOP OF CEMENT WAS FOUND @ 3916'.
WELL WAS LOGGED WITH 0 PSI @ SURFACE. Prints: 4
YOUR CREW TODAY IS: JOHN YANC AND PAUL KRUGER.
THANK YOU FOR CHOOSING WEATHERFORD WIRELINE, GRAND JUNCTION, CO. 970-263-8501.

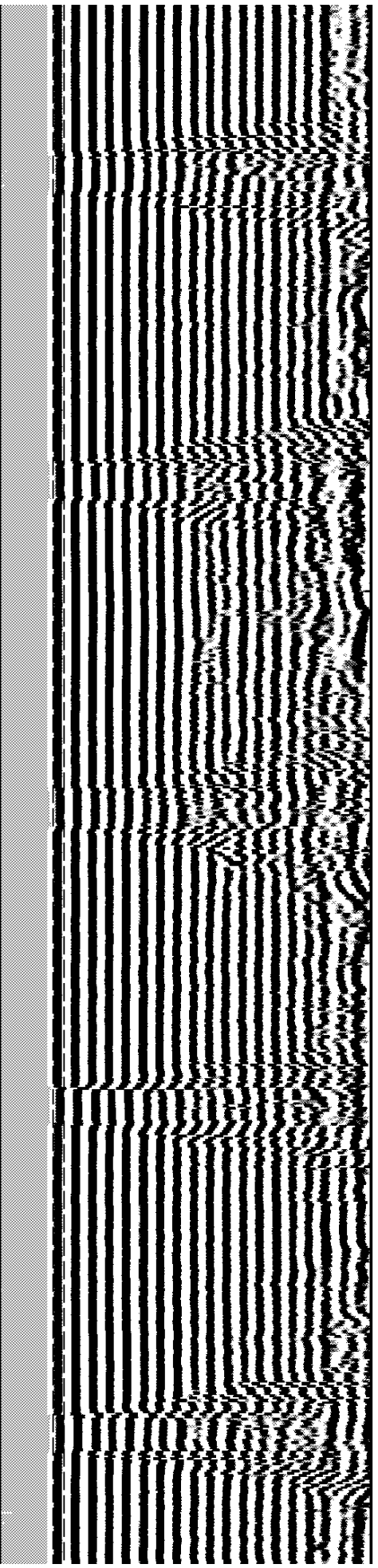
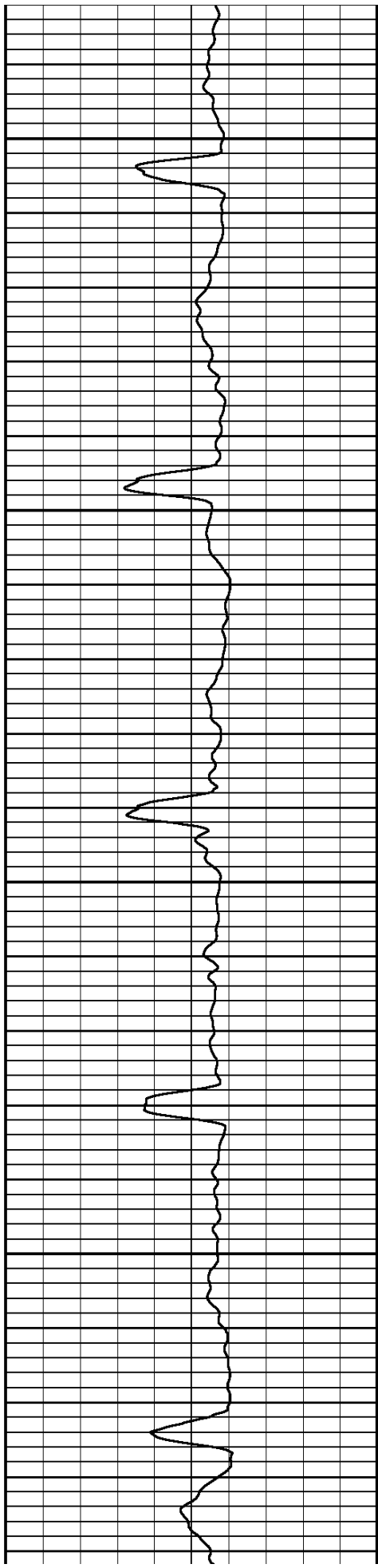
		EQUIPMENT DATA			
Bit Size	7.875"	Run No.	Tool Type	Tool No.	Other
Well Status	NEW DRILL	ONE	CTBA	172	
Surface Pressure		ONE	GRBA	172	
Shut In	Flowing	ONE	CENB	257	
0 PSI	NO	ONE	SBTA	339	
		ONE	CENC	210	

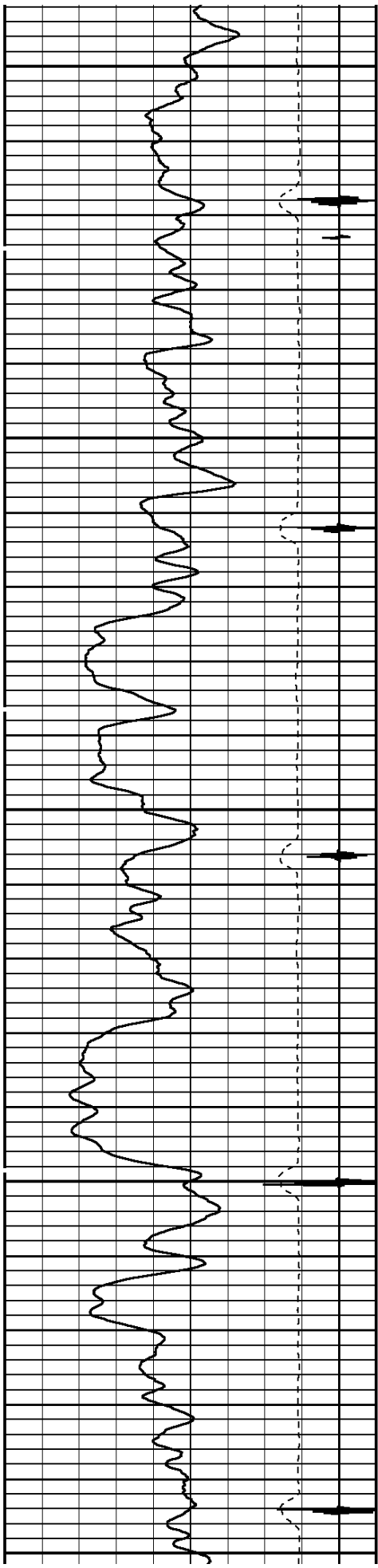




3400

3500

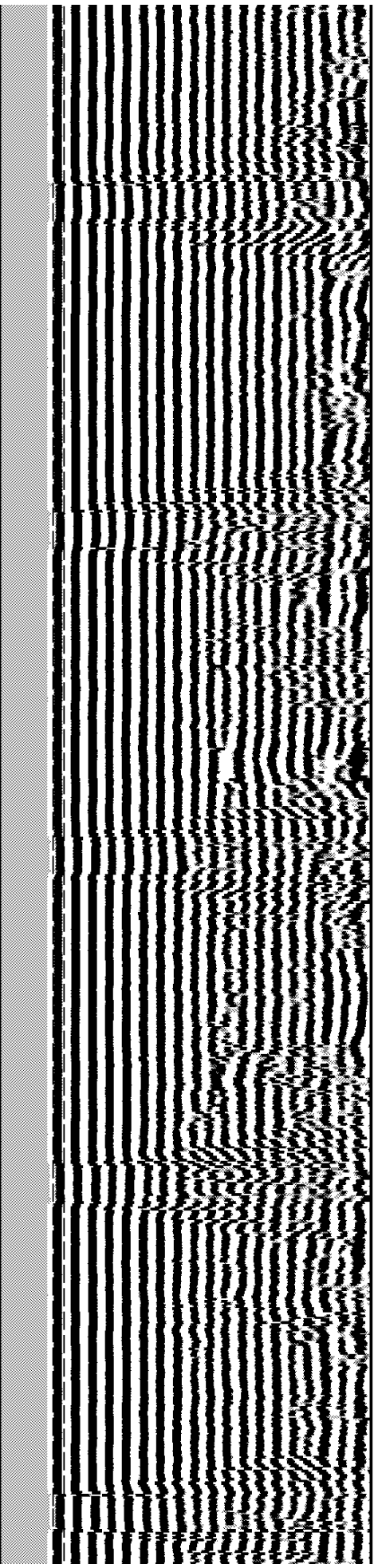
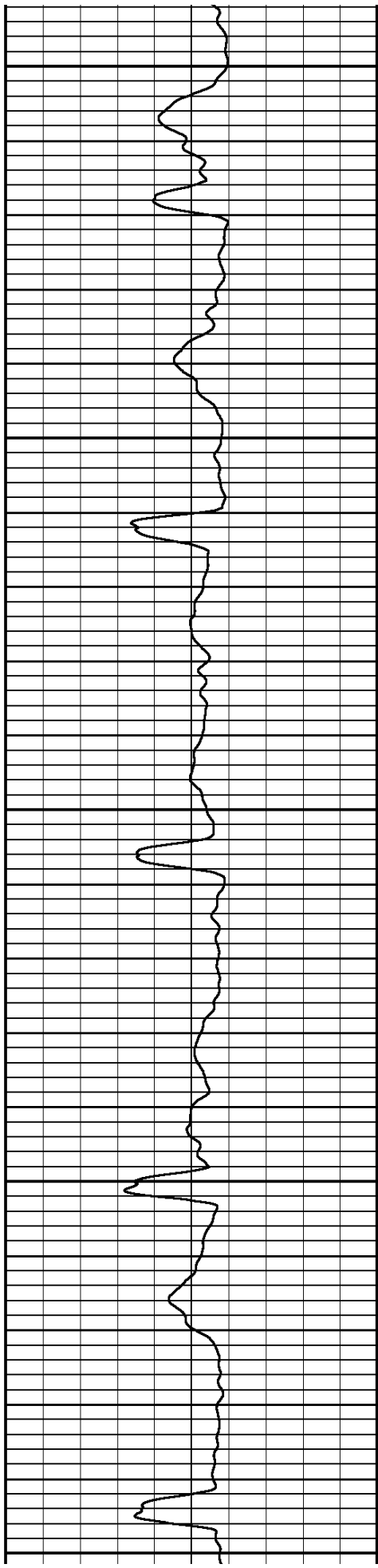


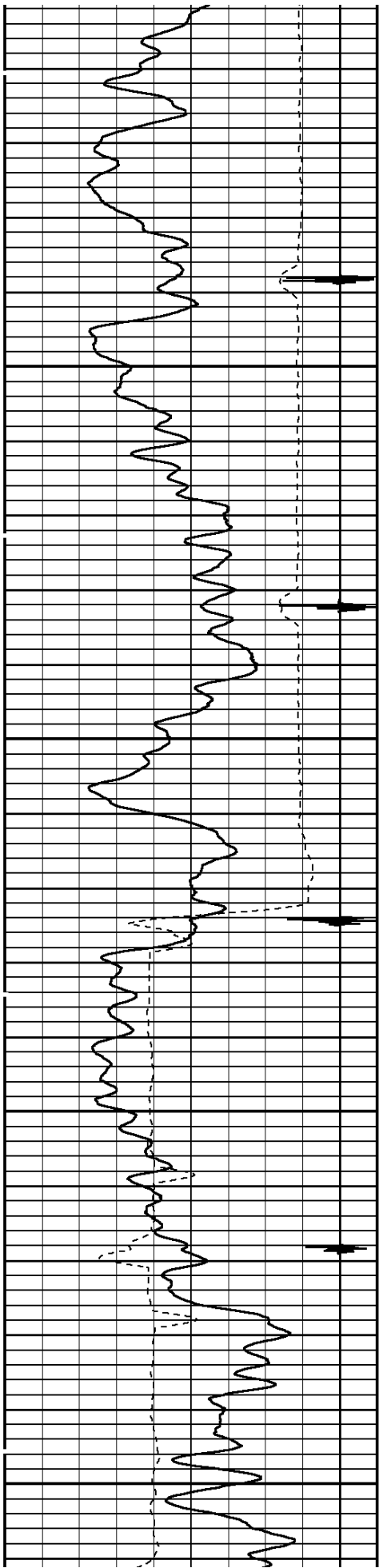


3600

3700

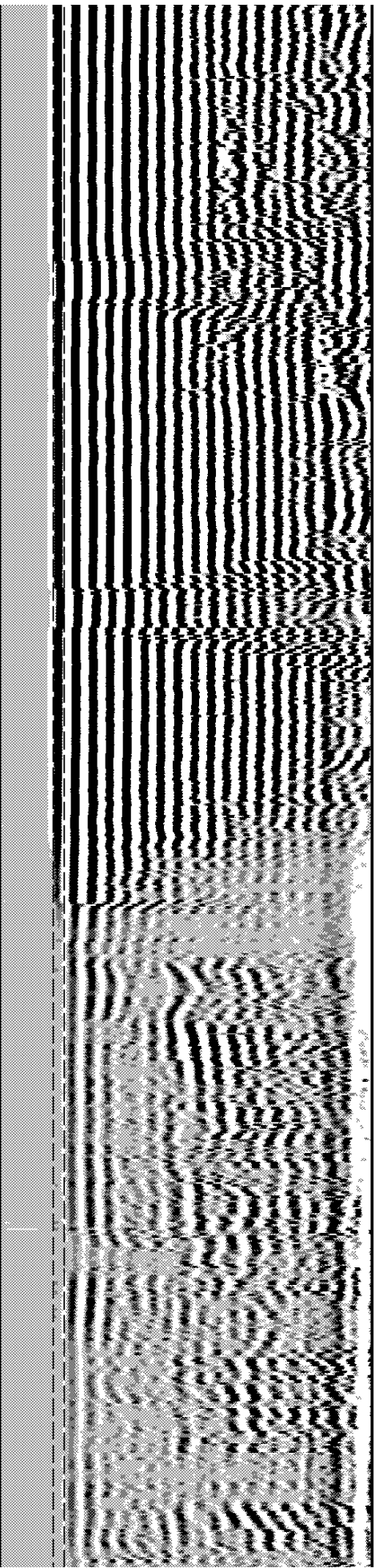
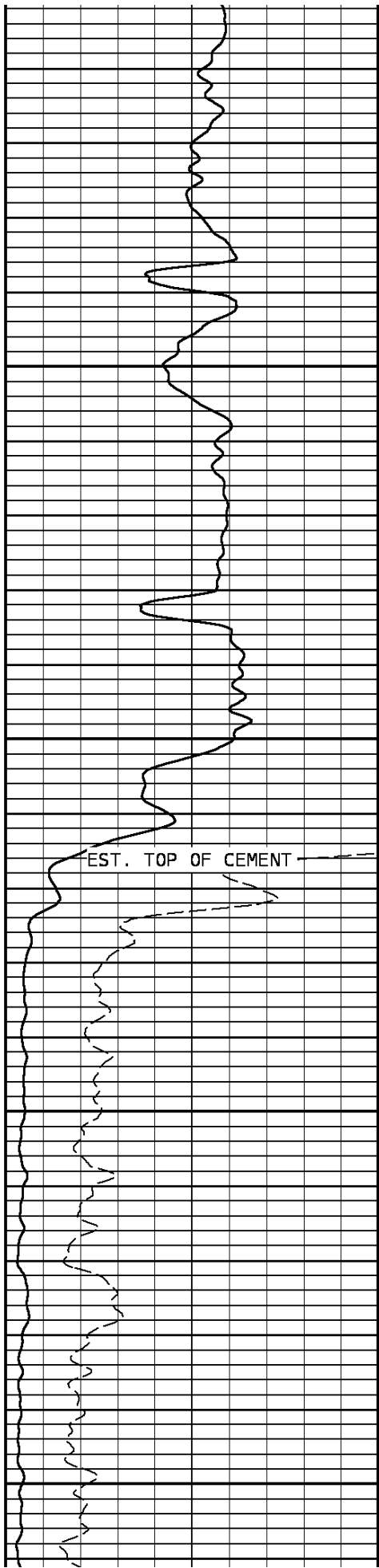
3800

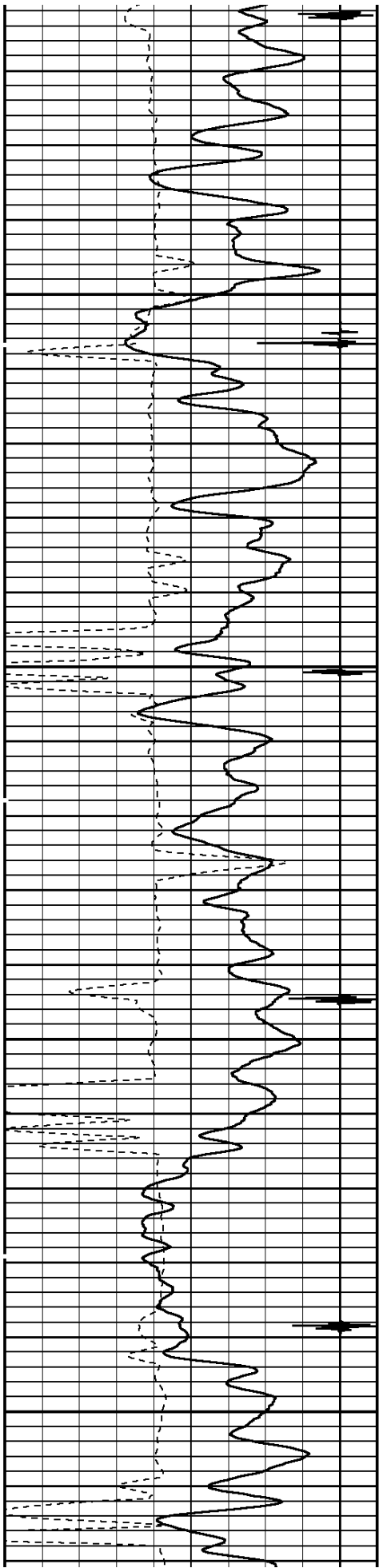




3900

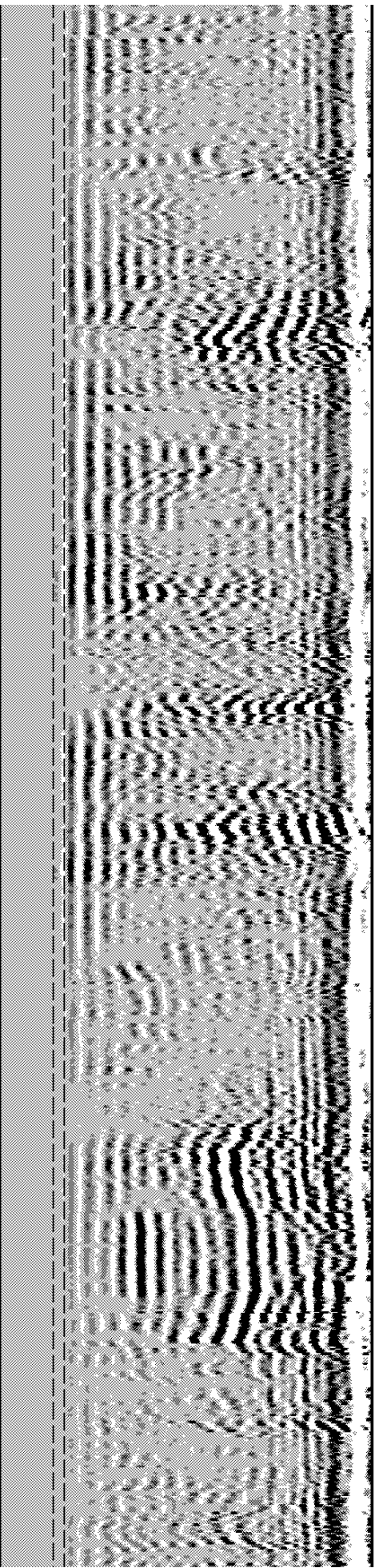
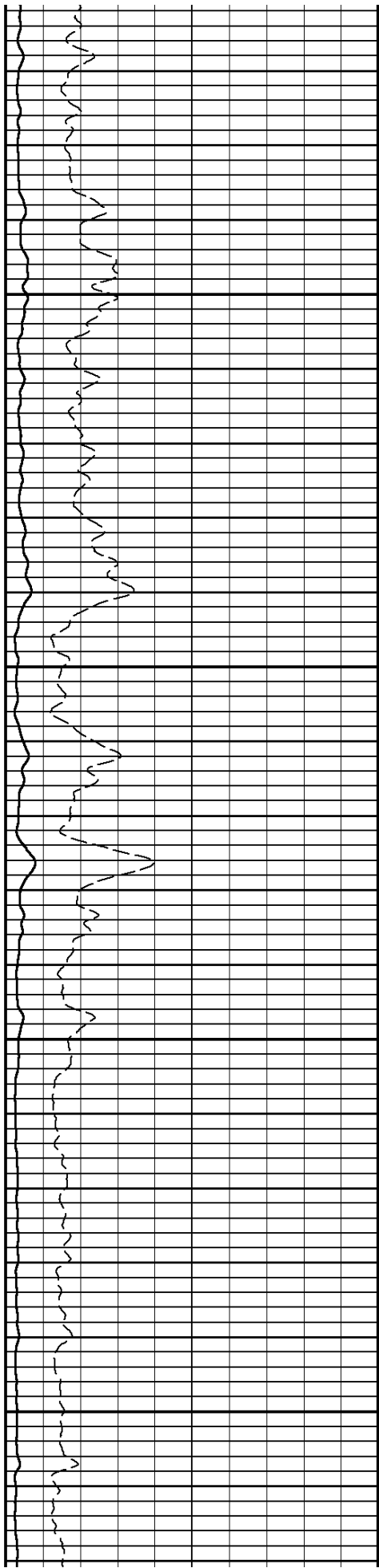
4000

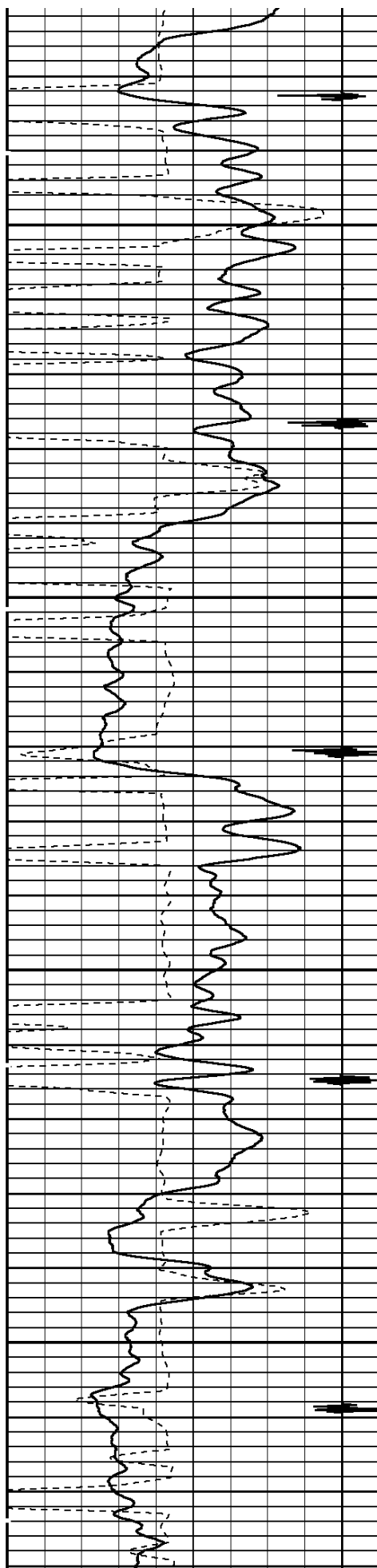




4100

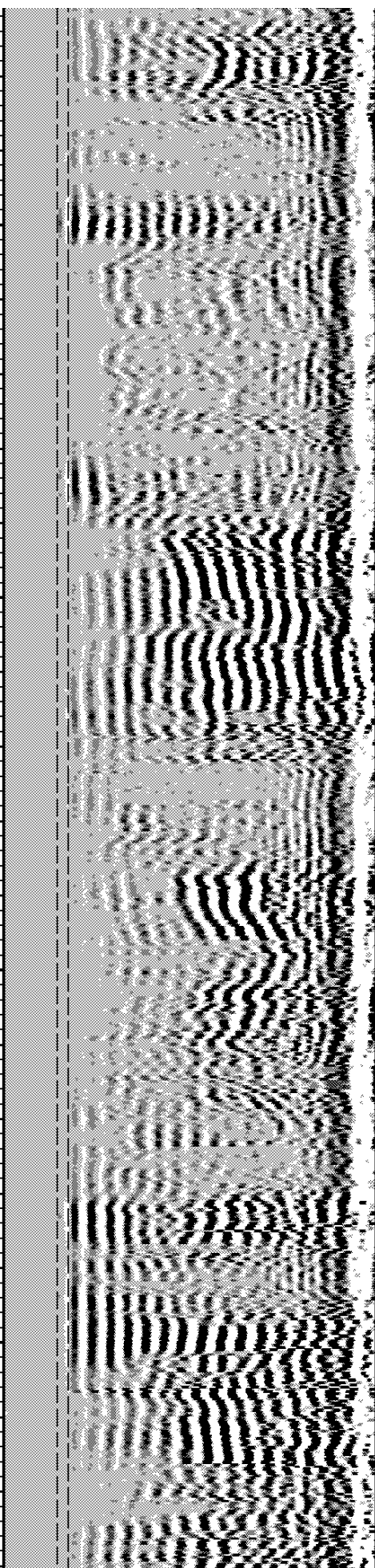
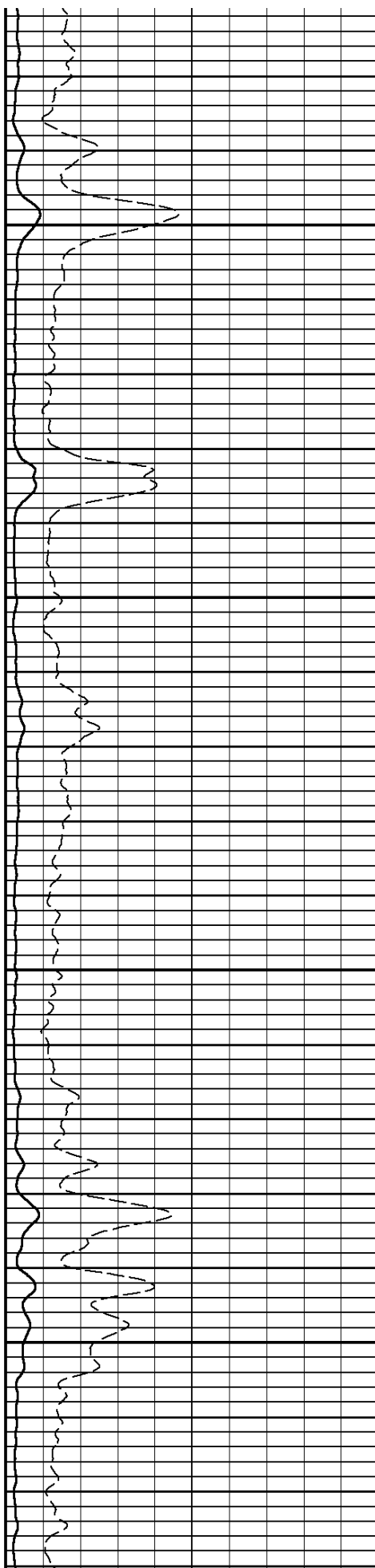
4200

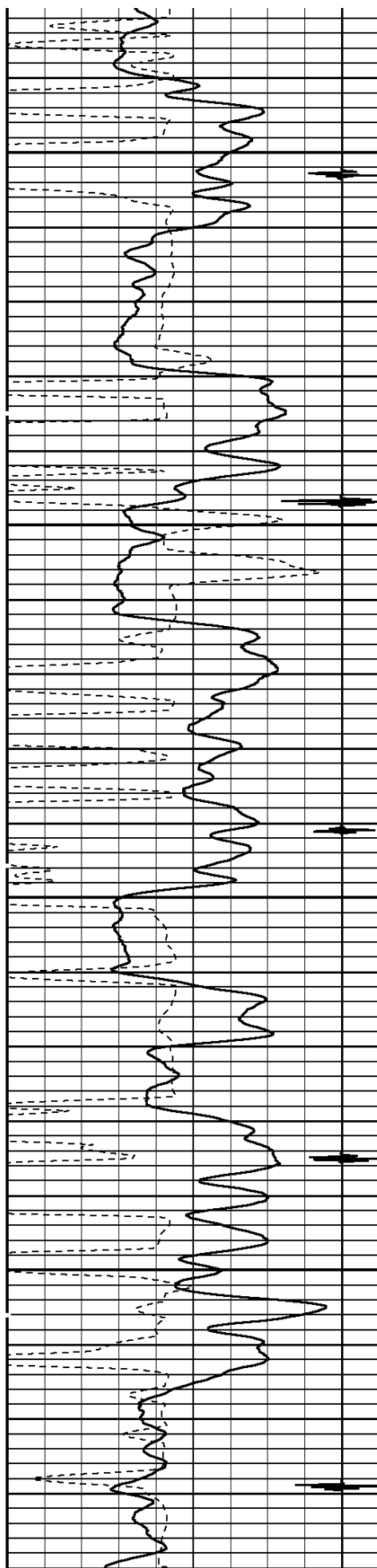




4300

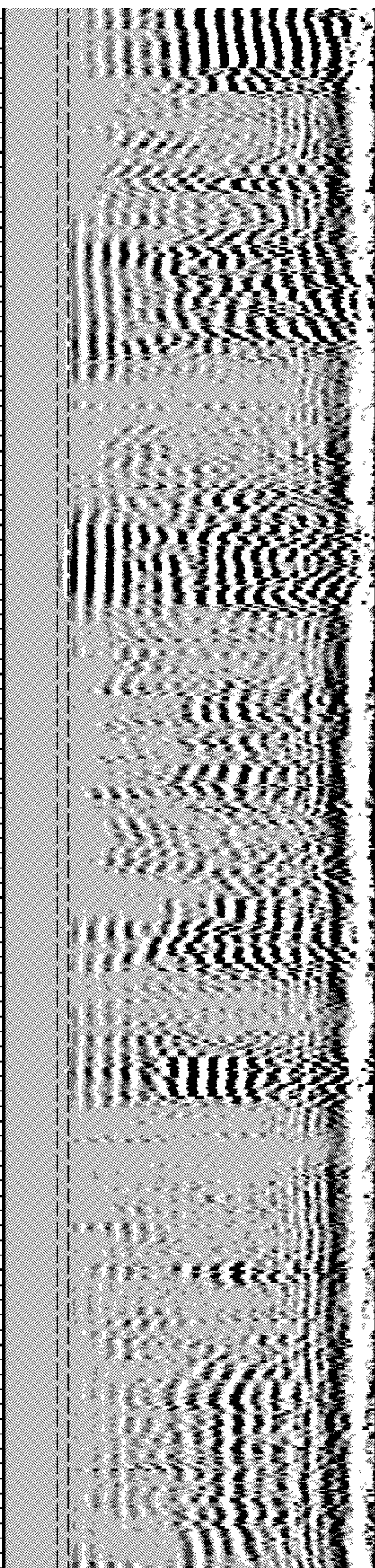
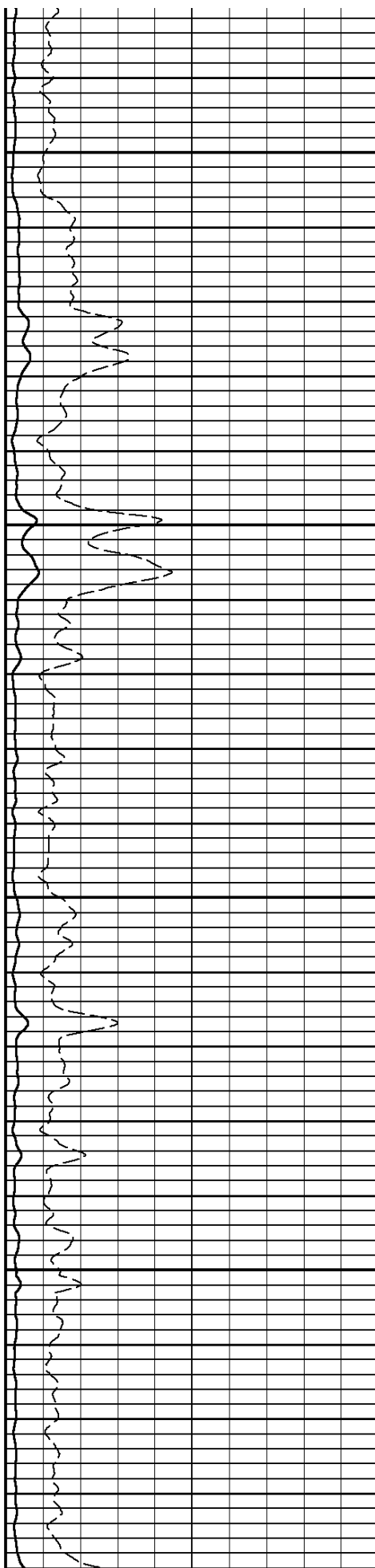
4400

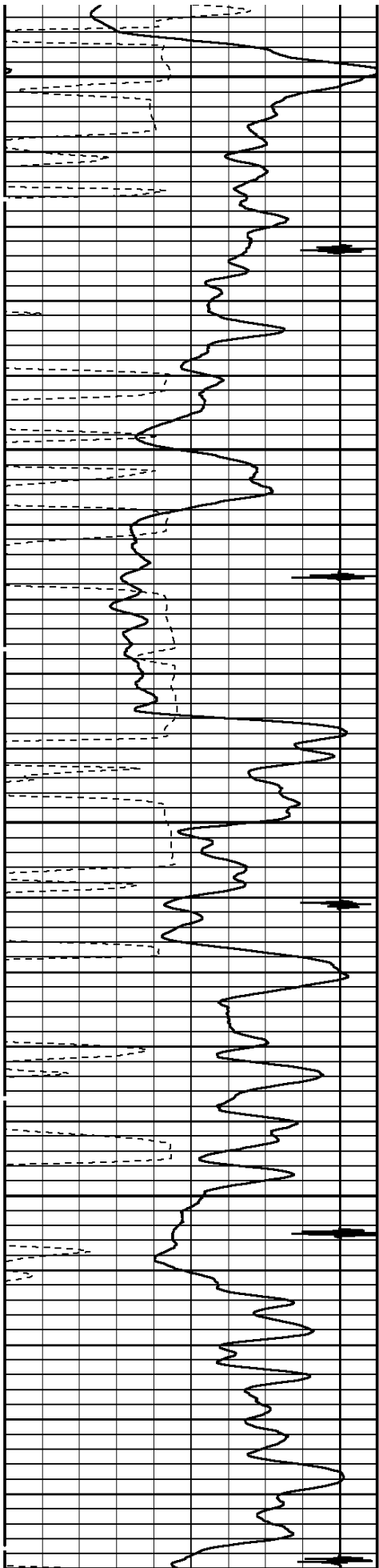




4500

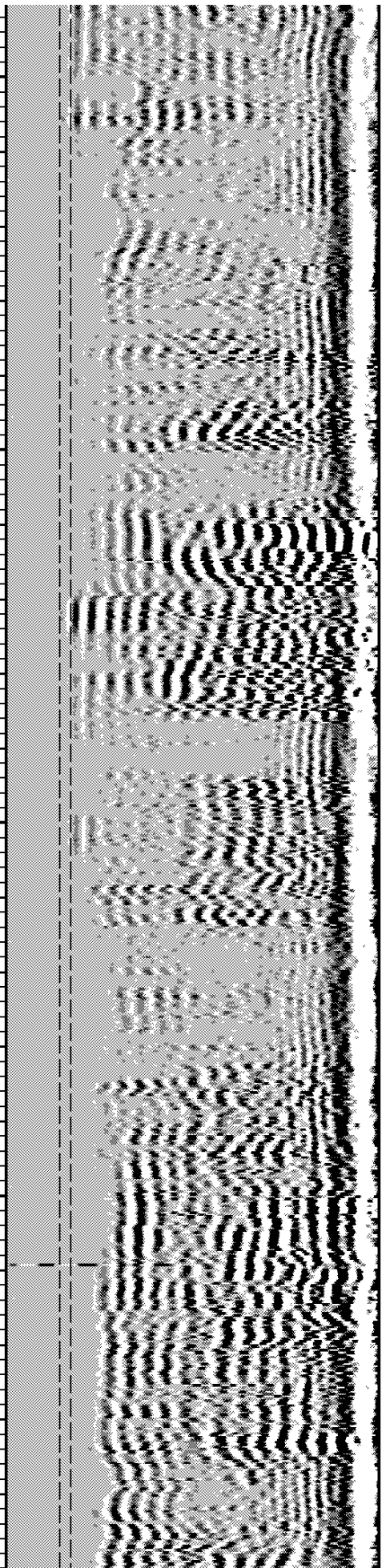
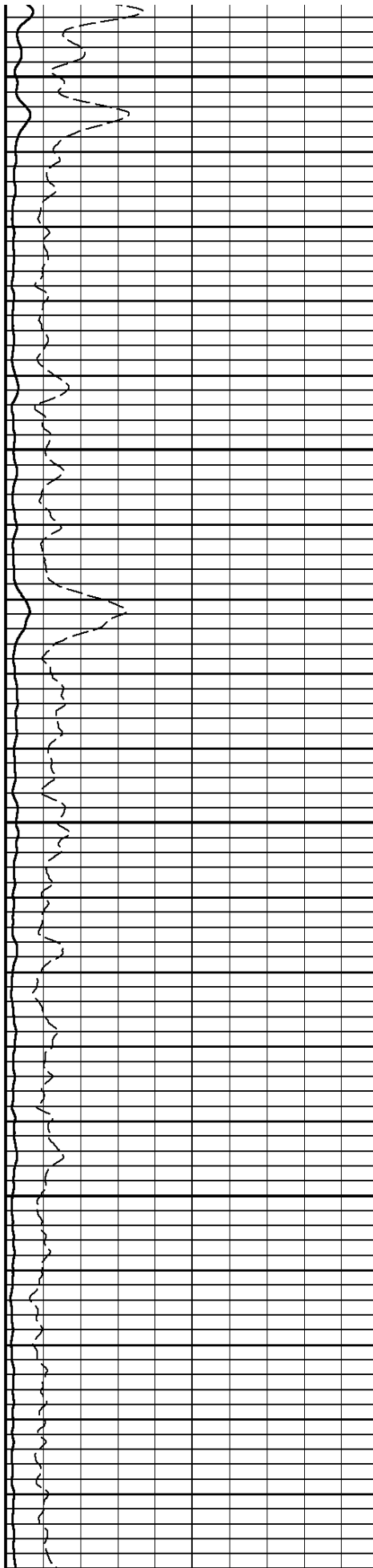
4600

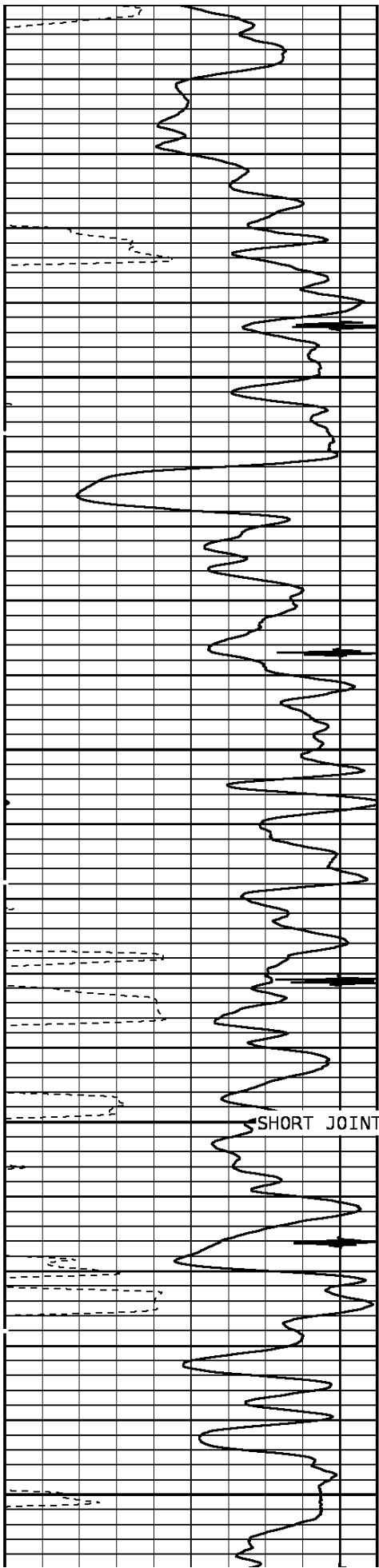




4700

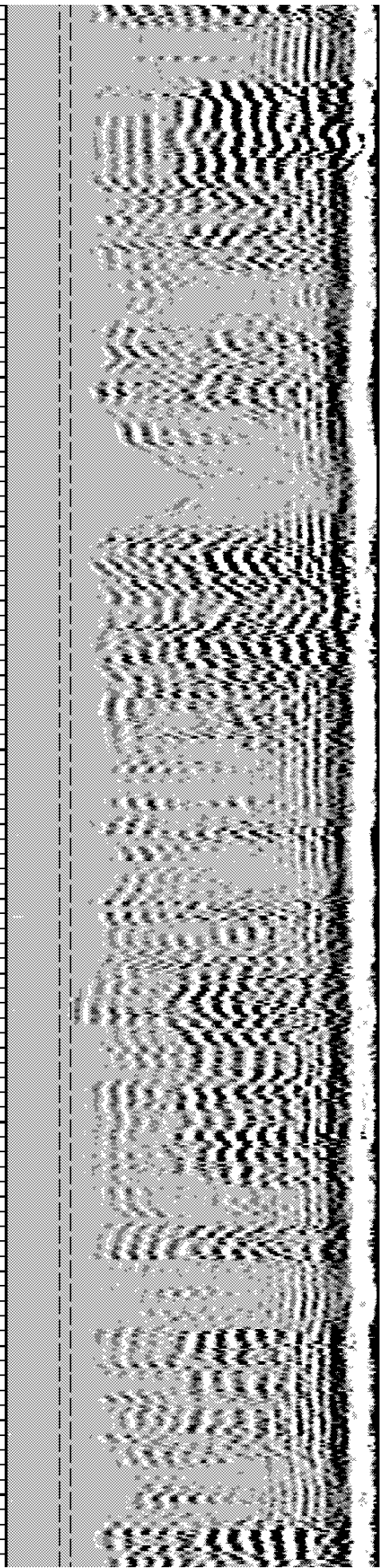
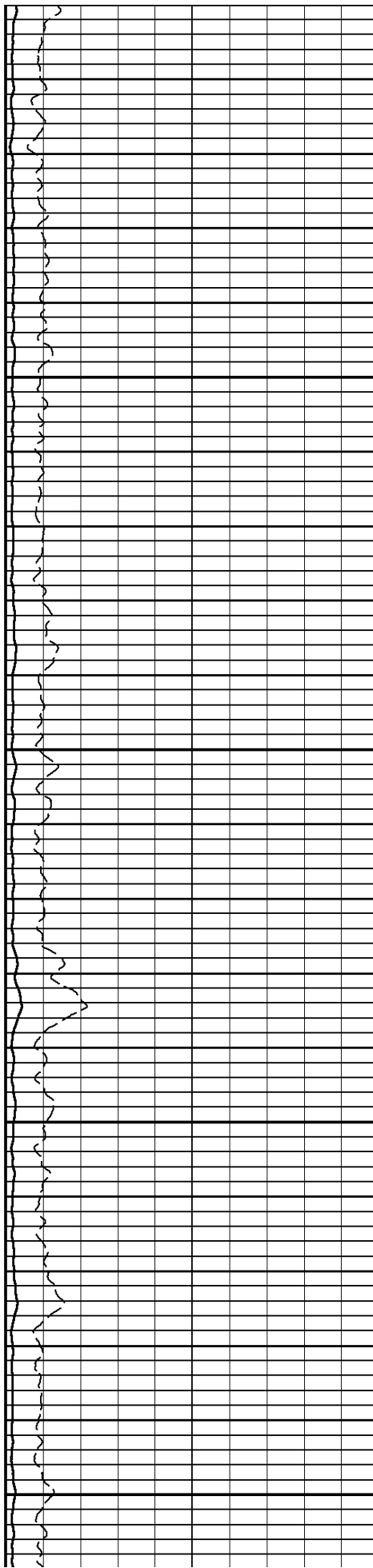
4800

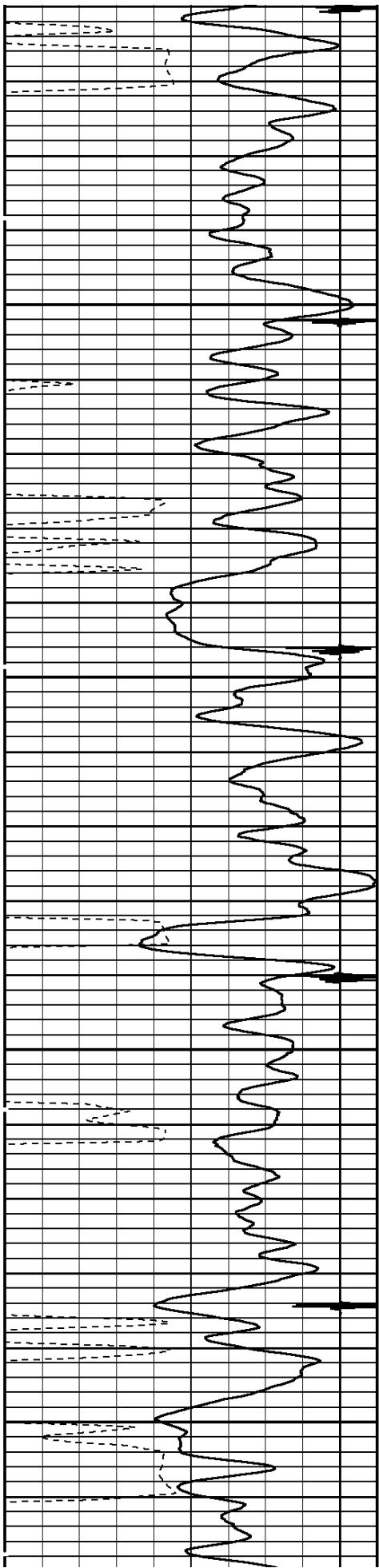




4900

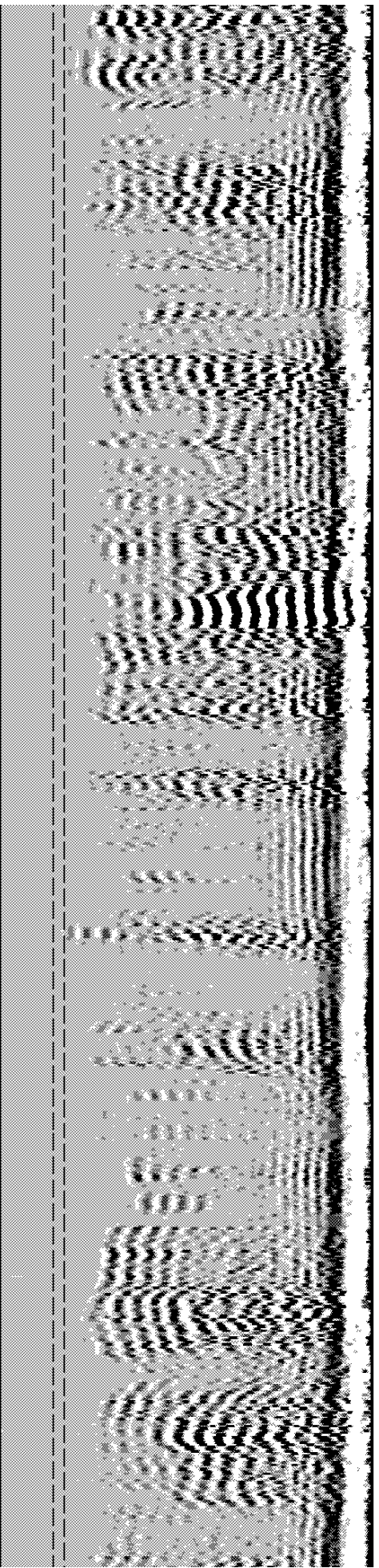
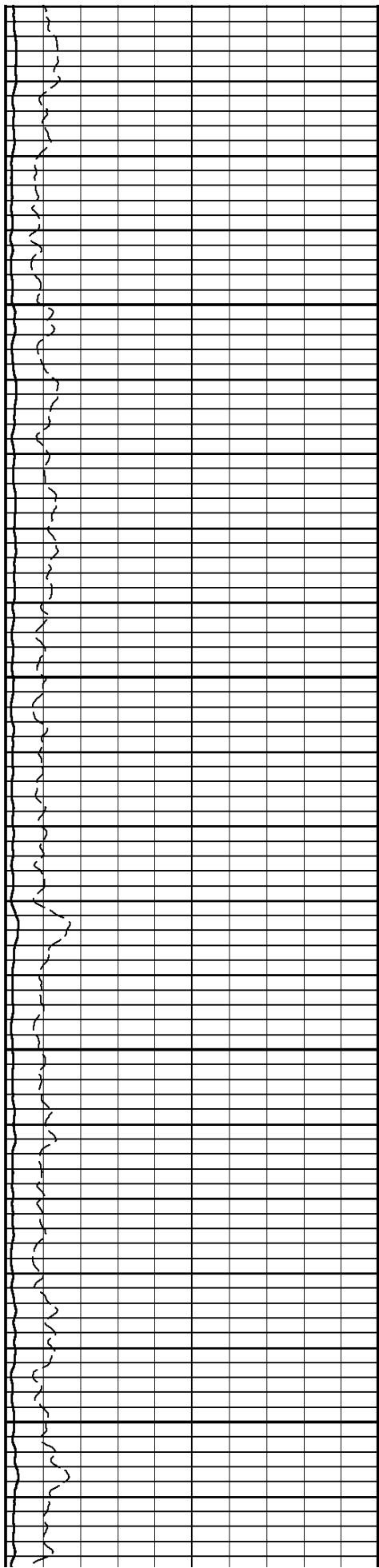
5000

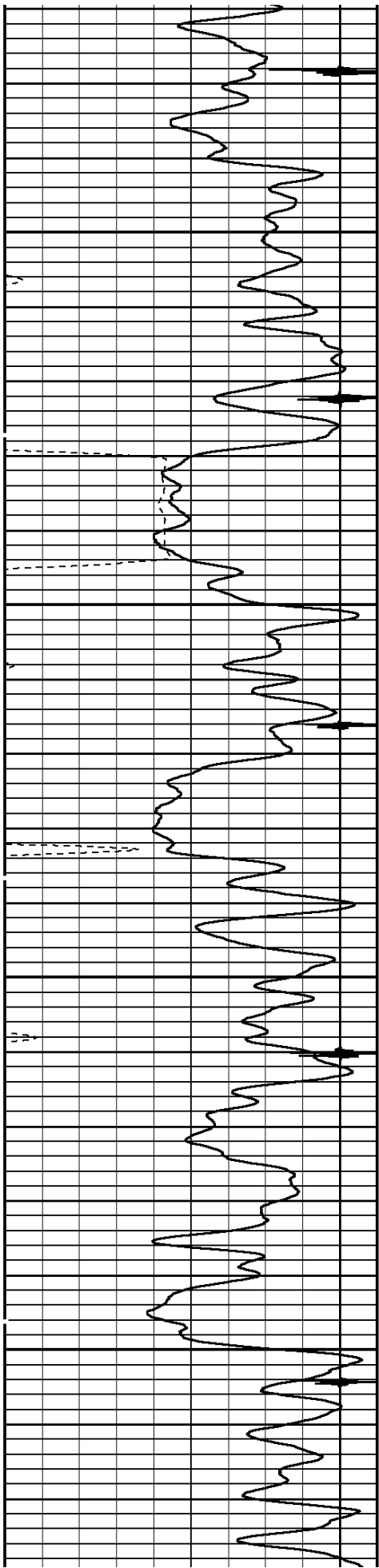




5100

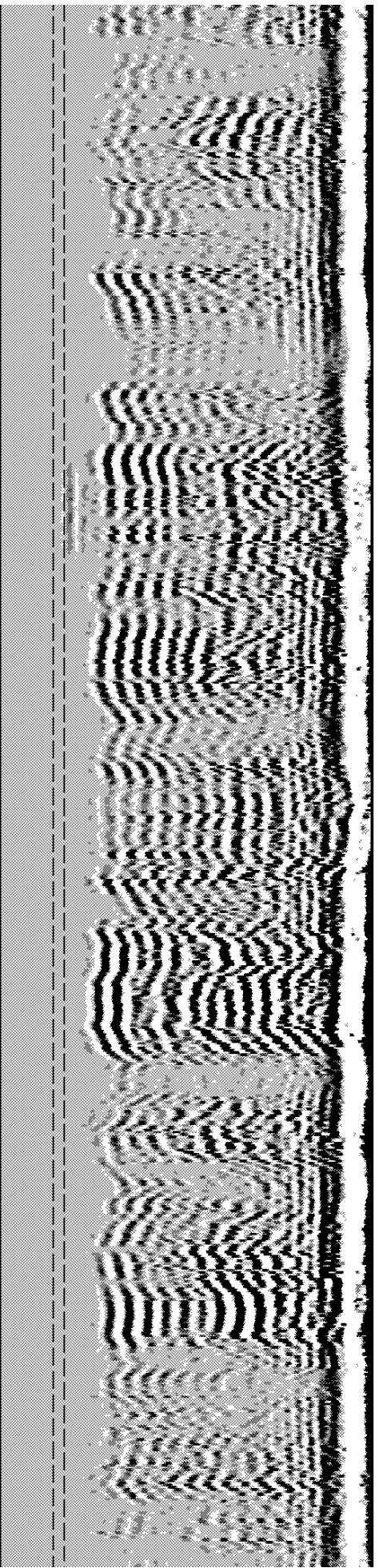
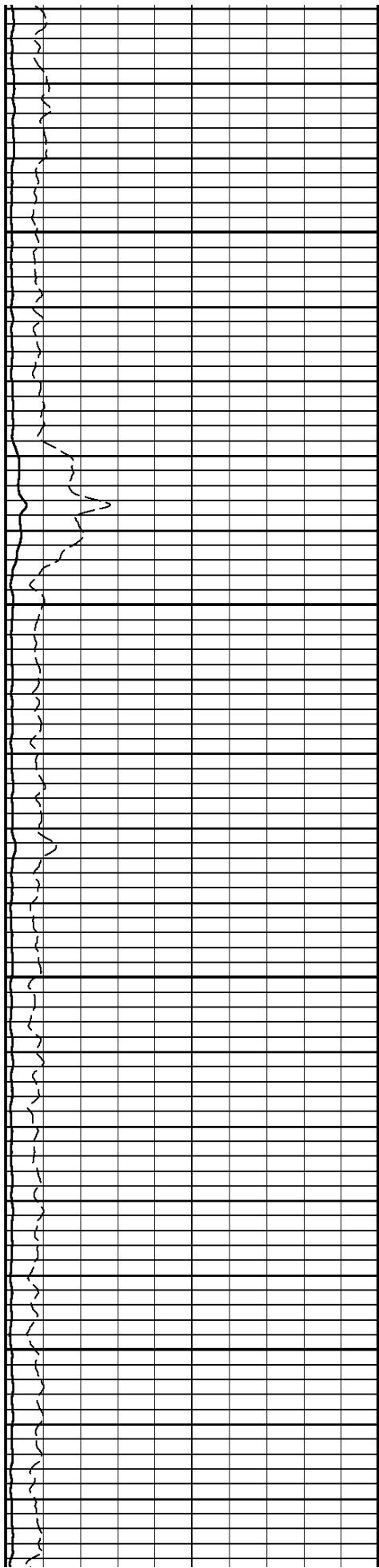
5200

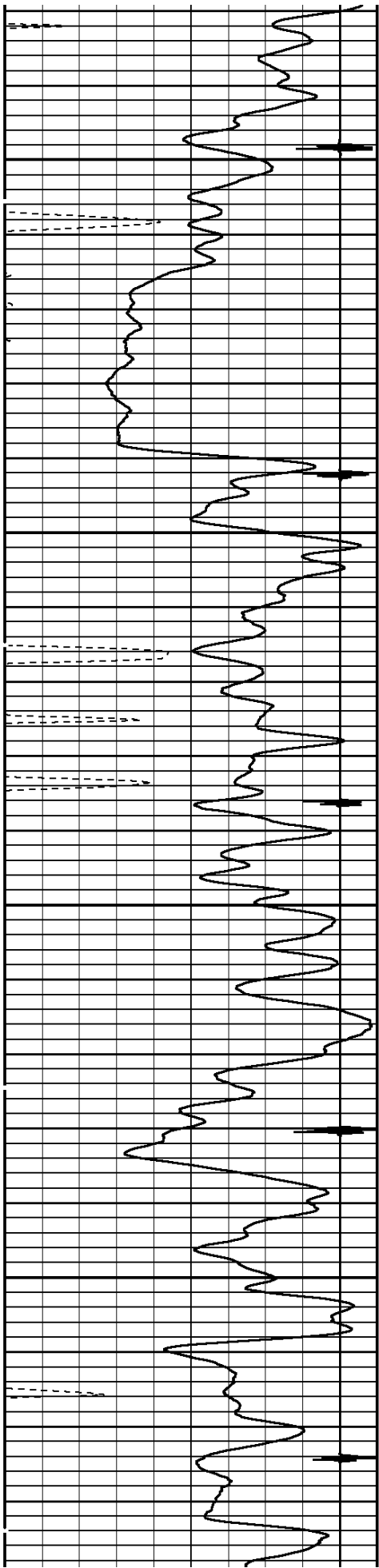




5300

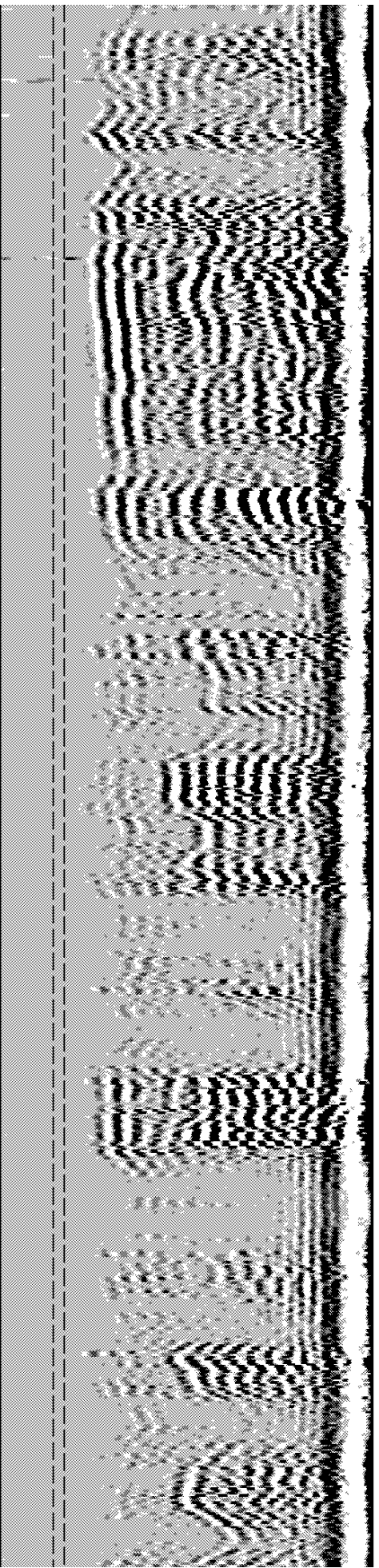
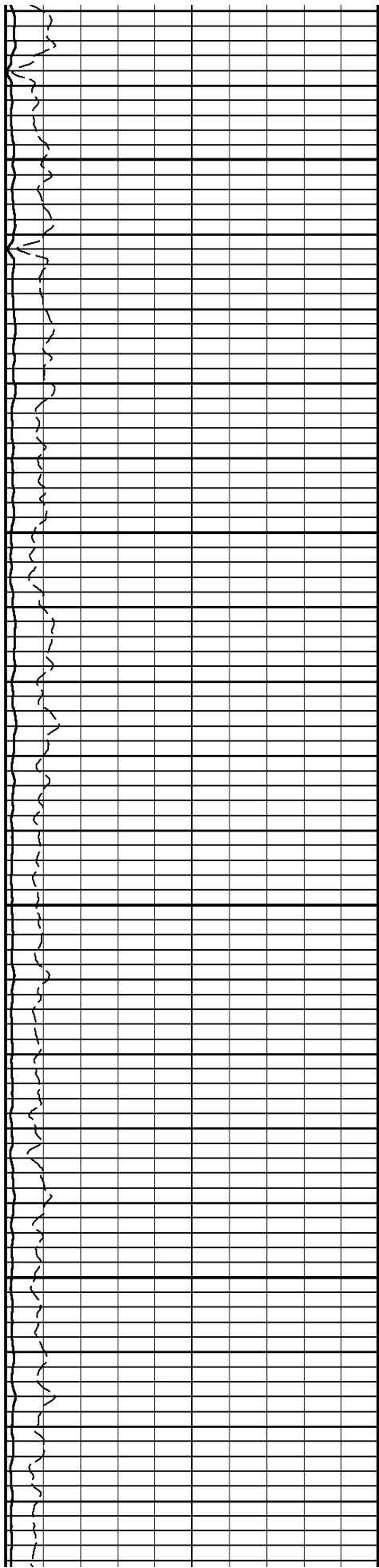
5400

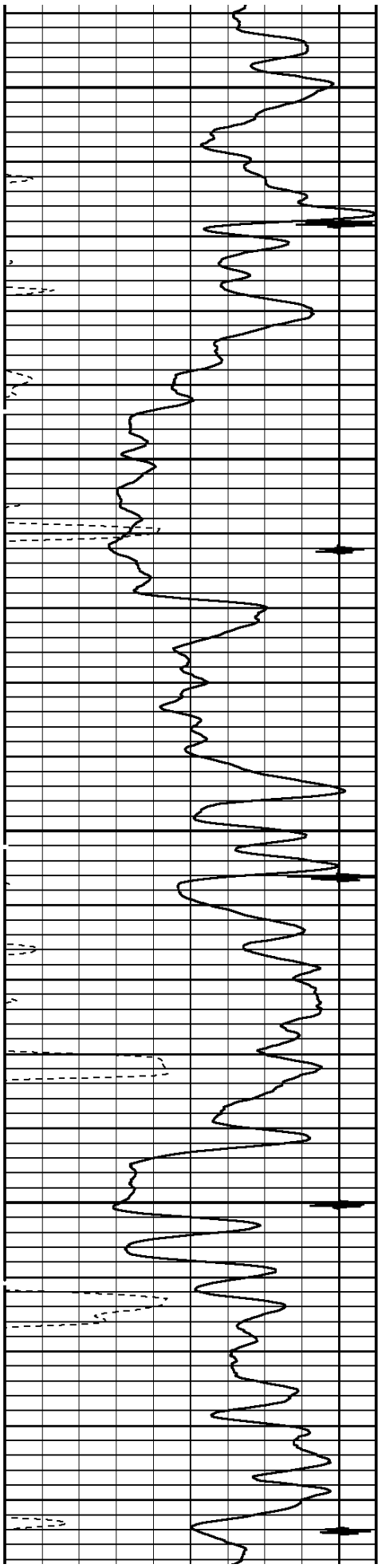




5500

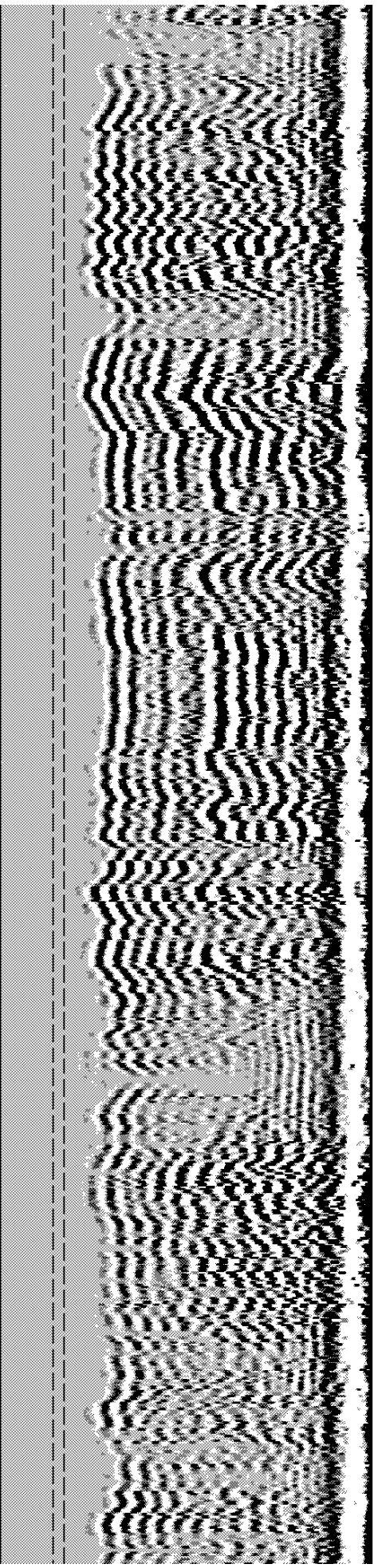
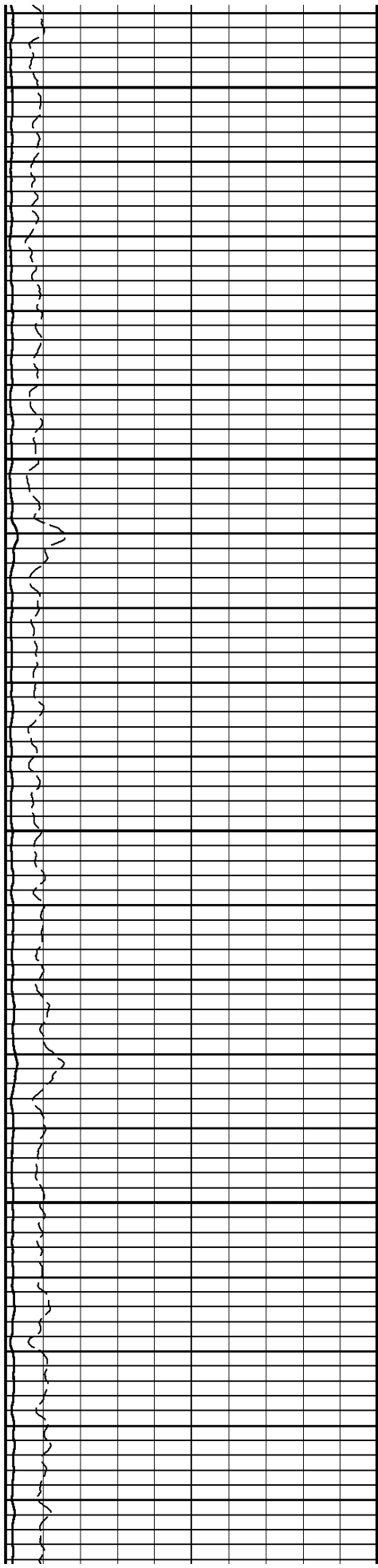
5600

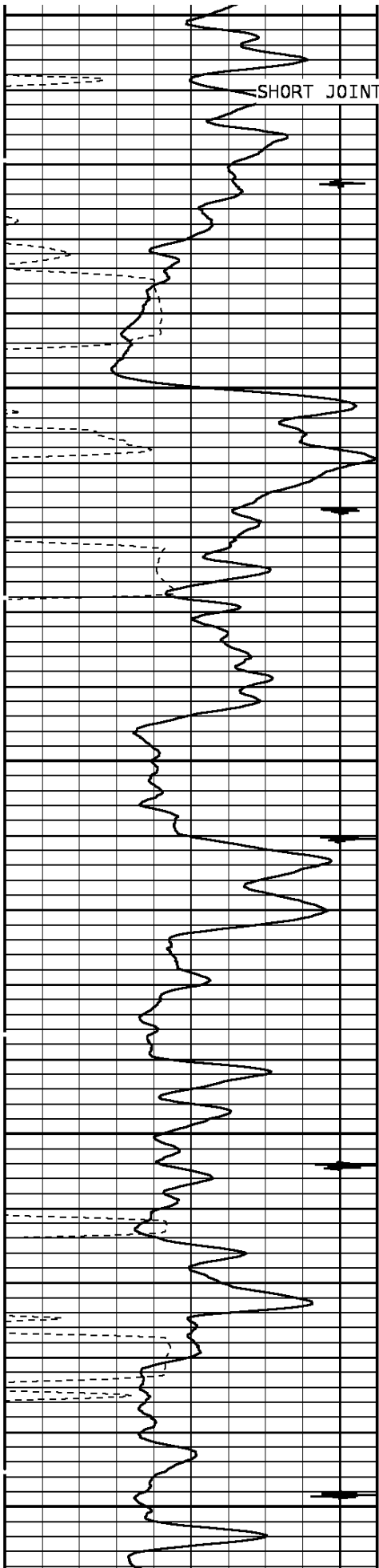




5700

5800

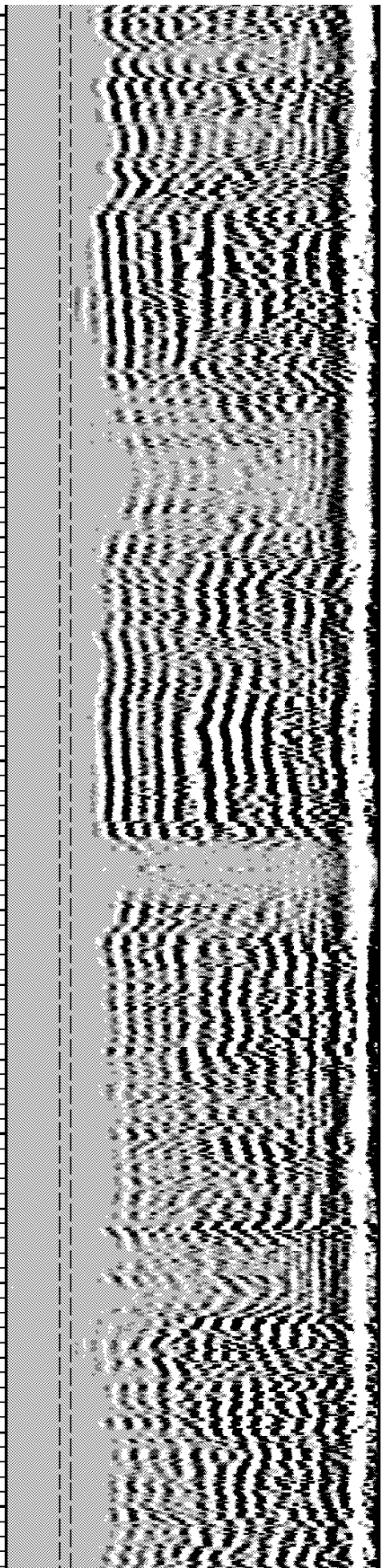
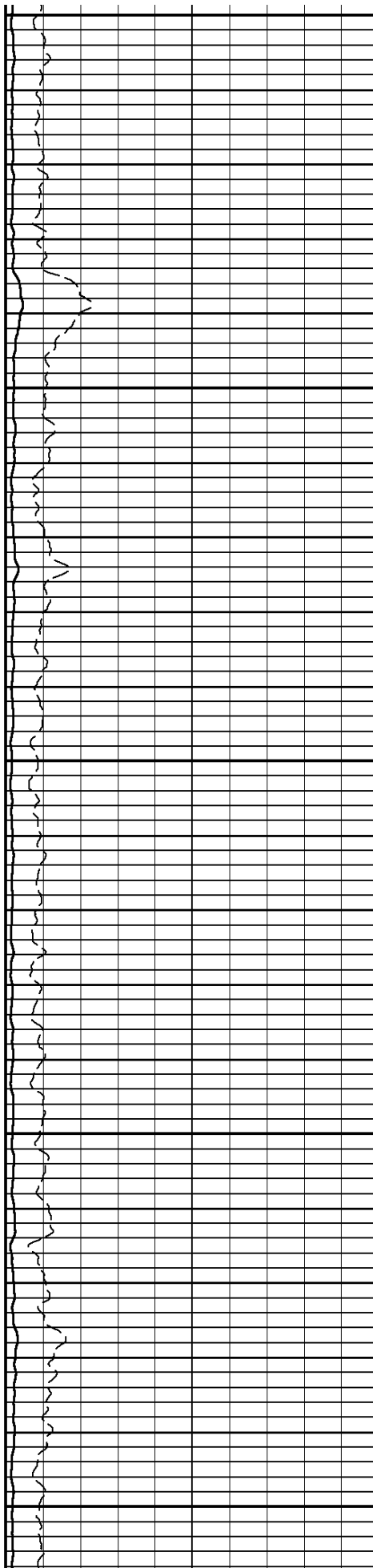


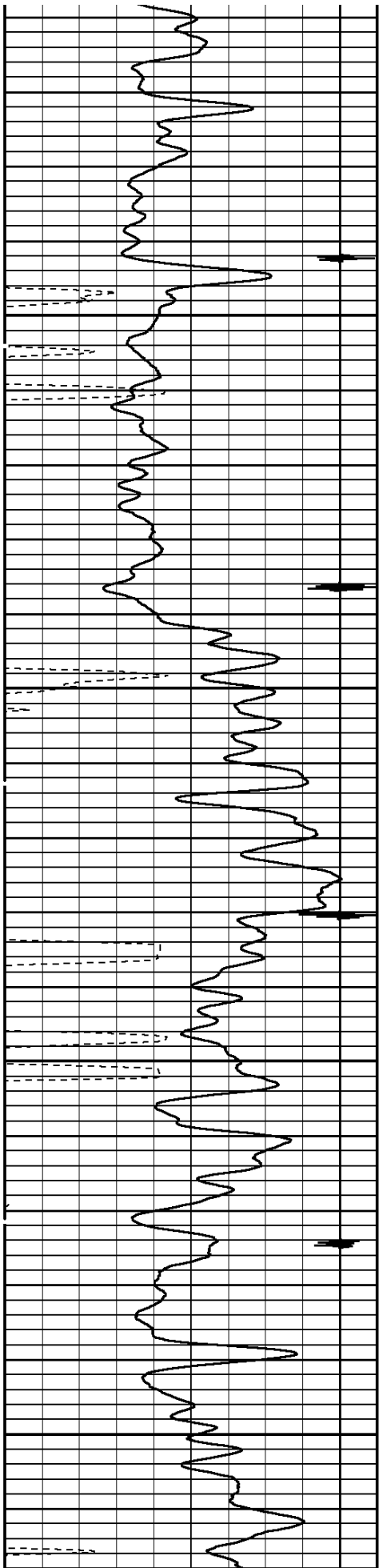


5900

6000

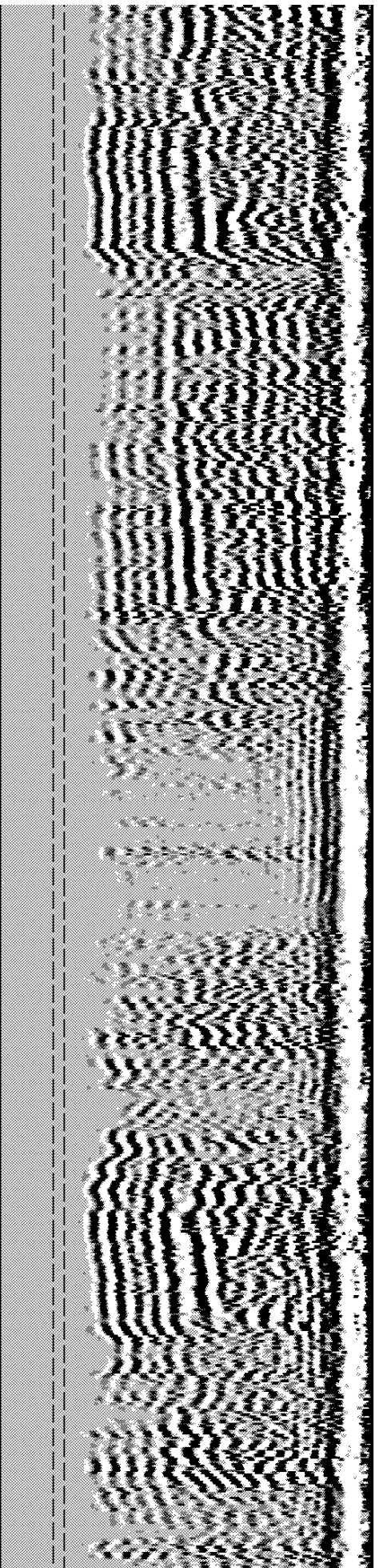
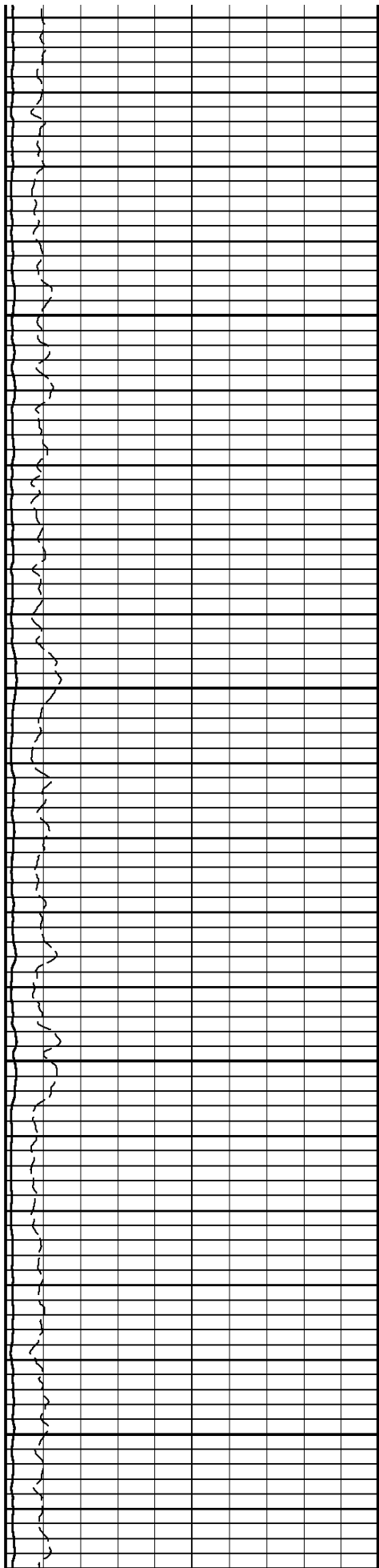
6100

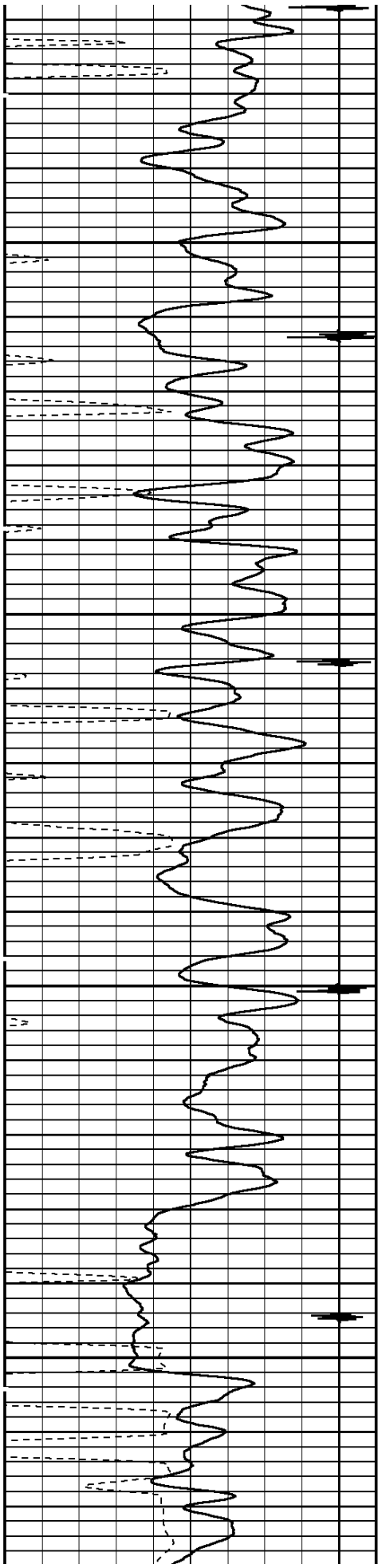




6200

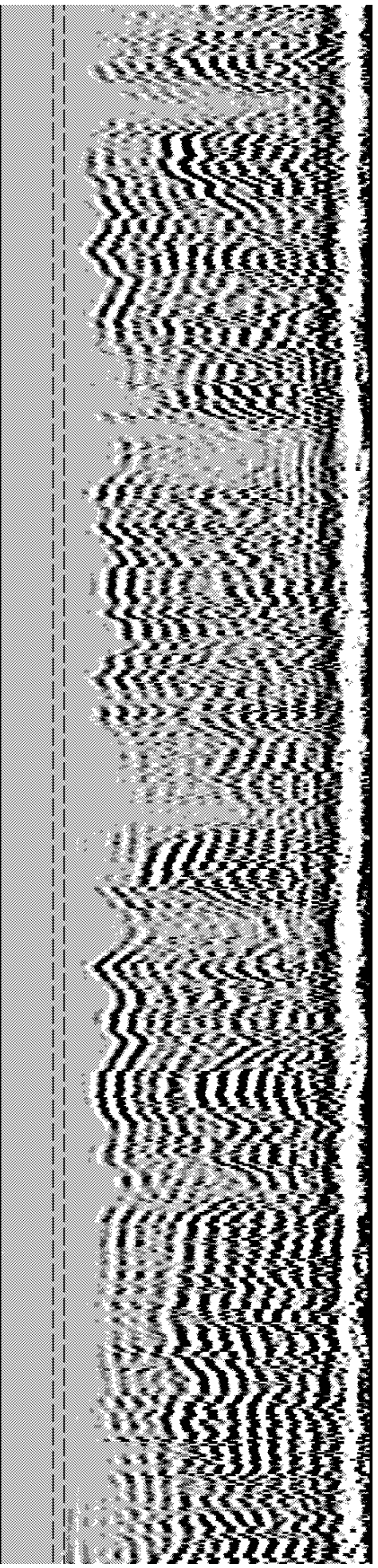
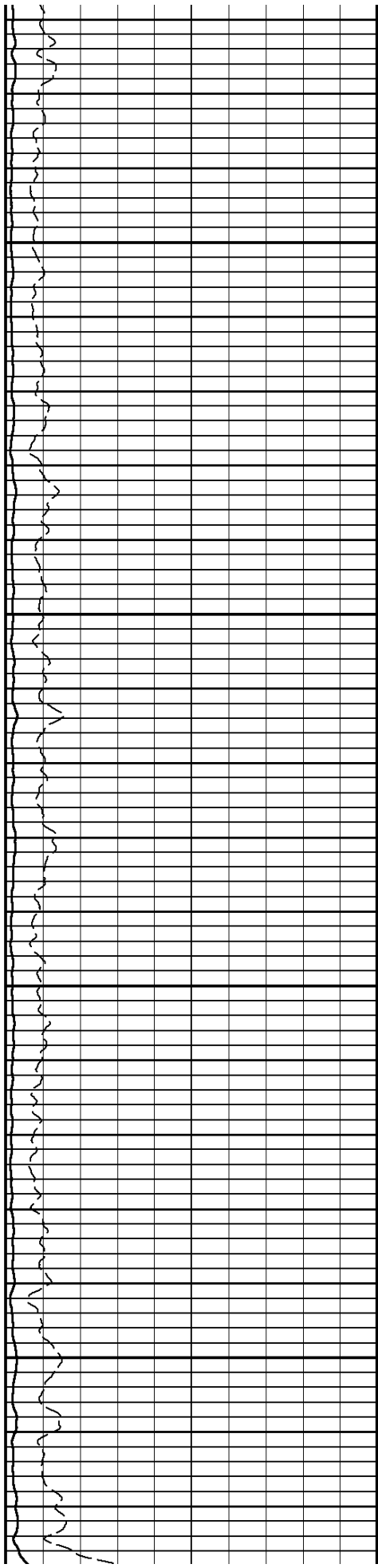
6300

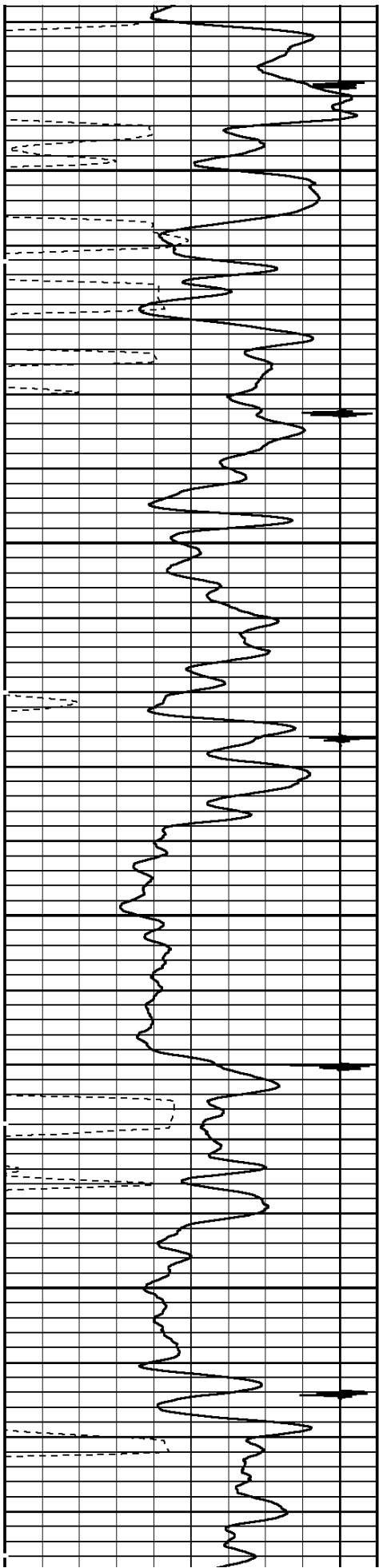




6400

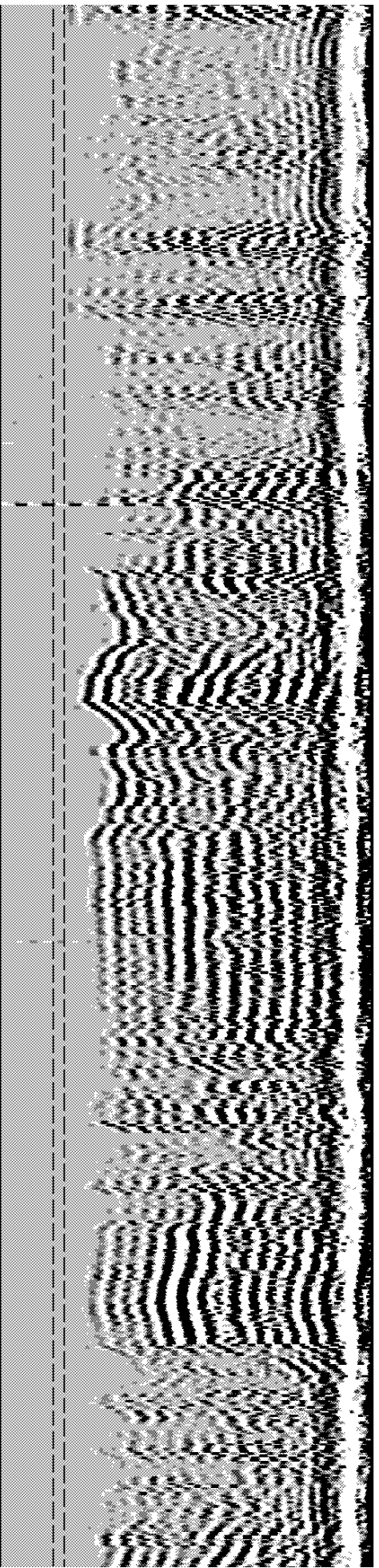
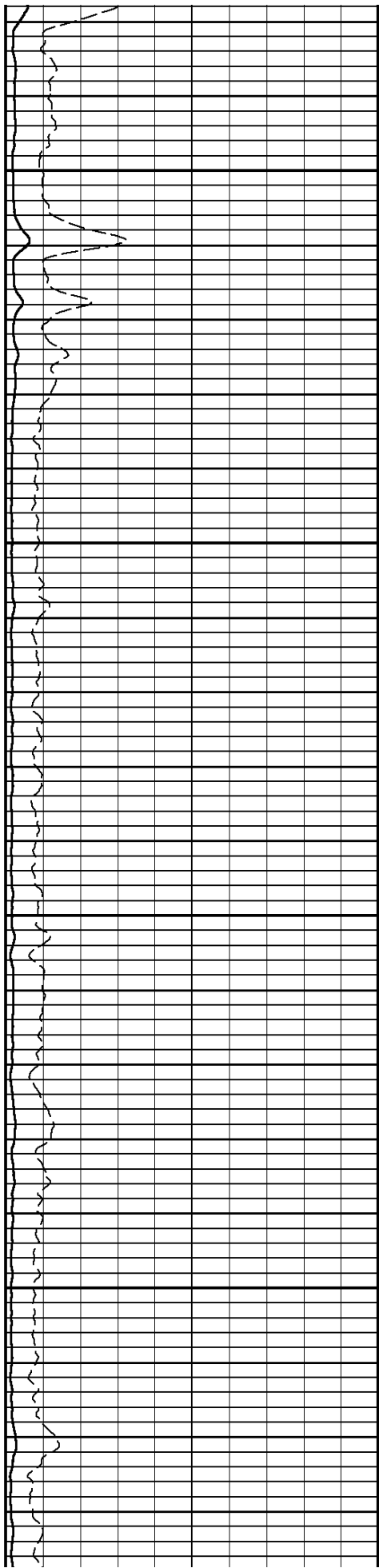
6500

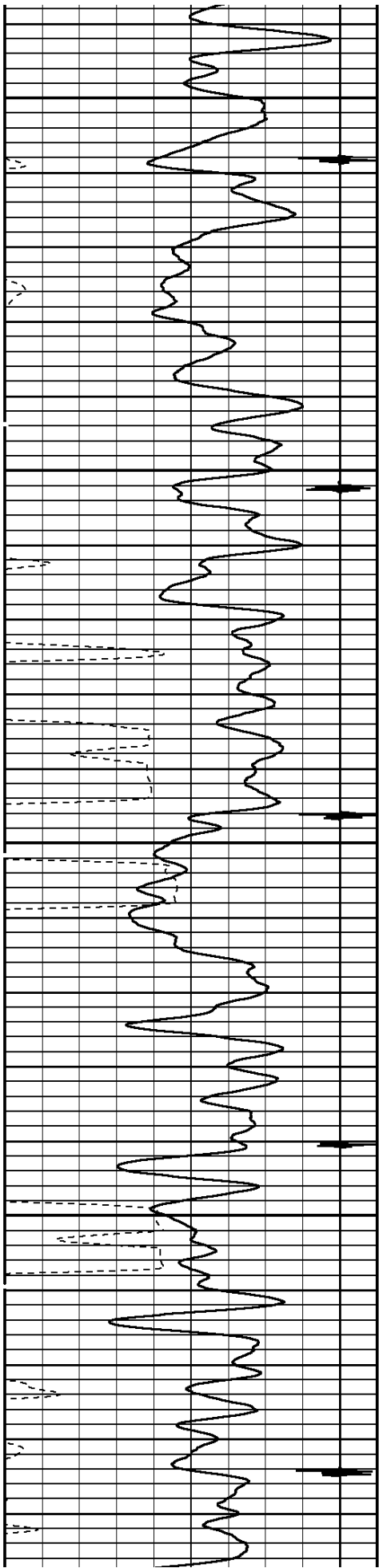




6600

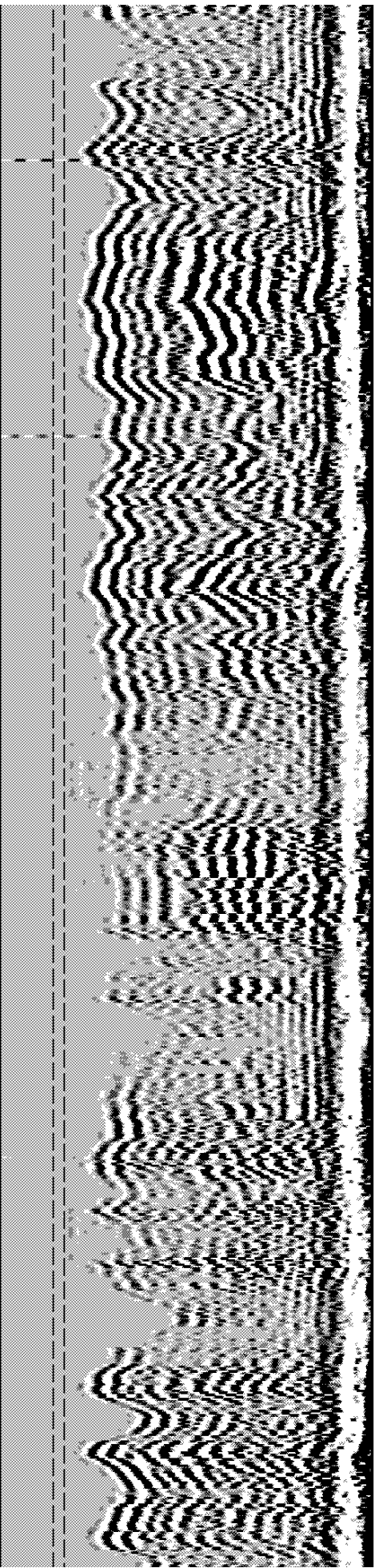
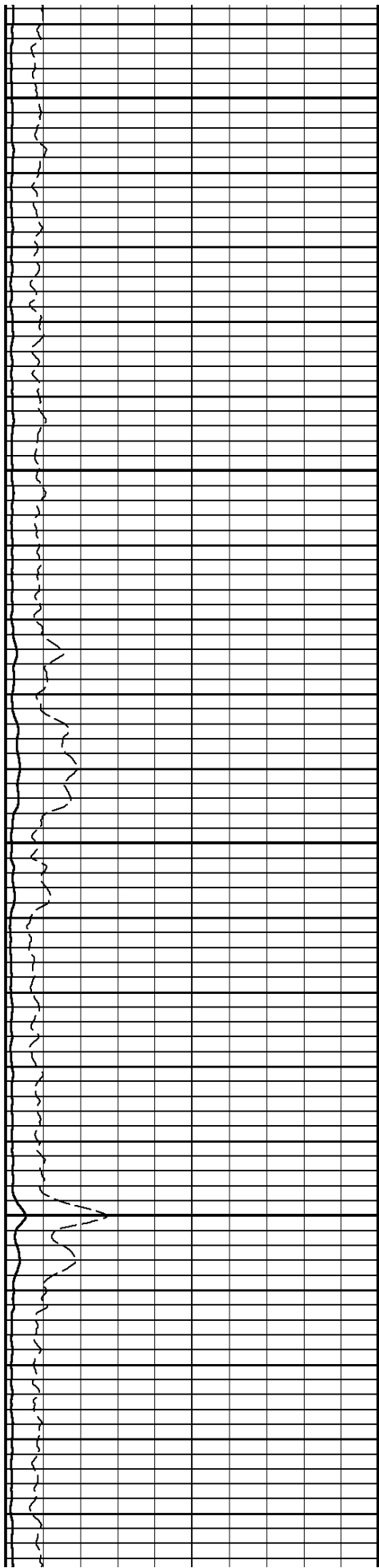
6700

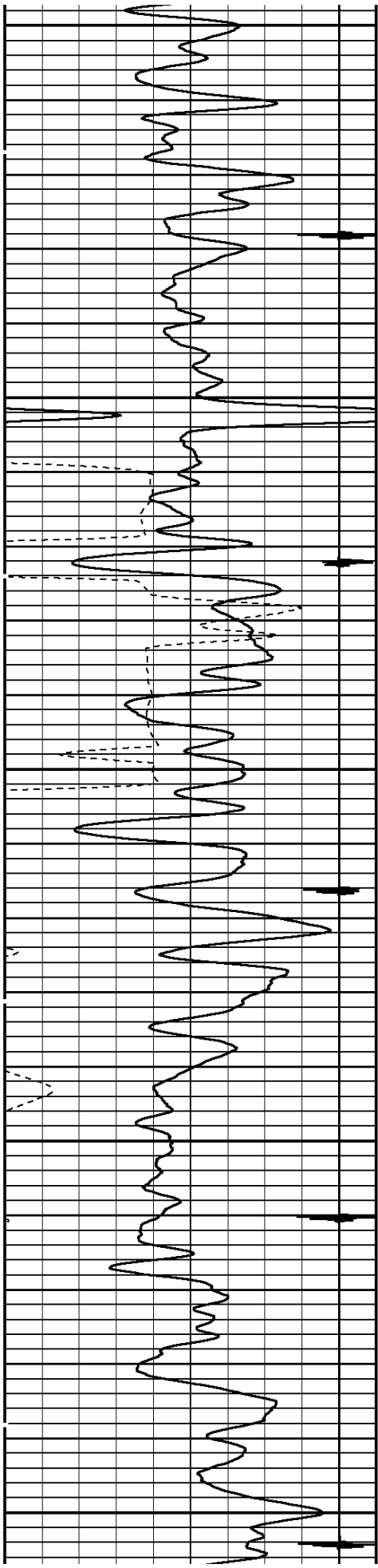




6800

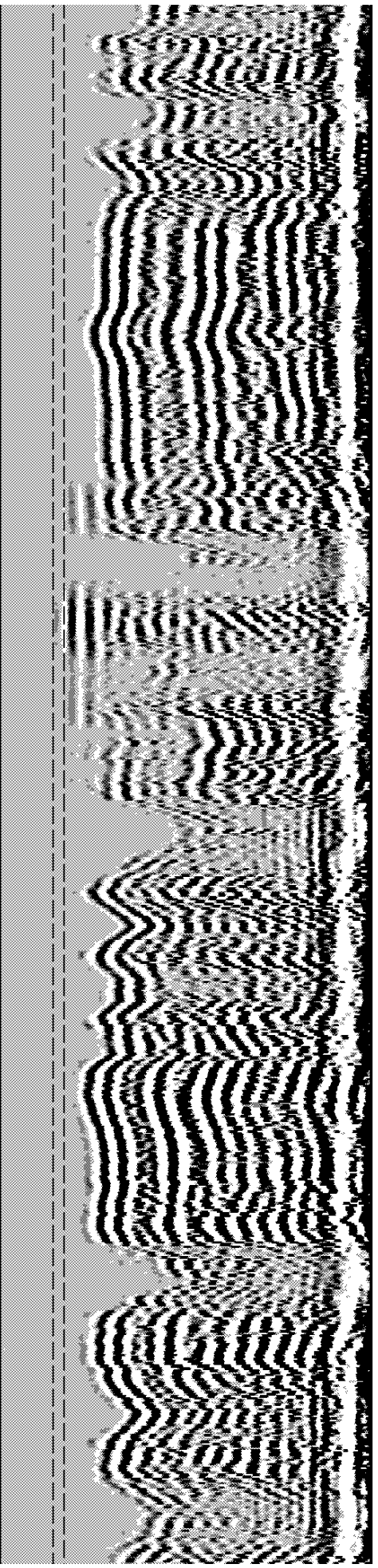
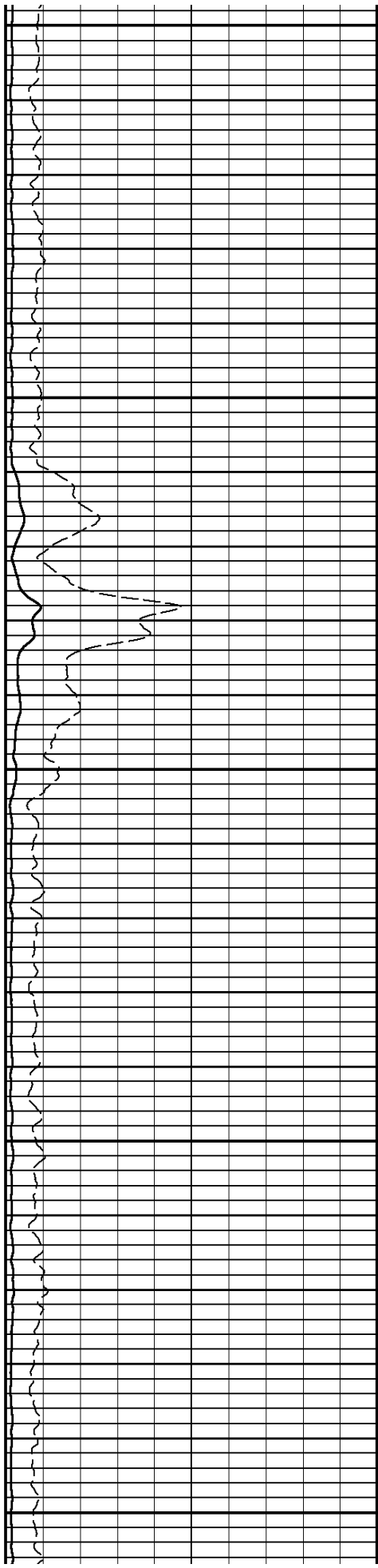
6900

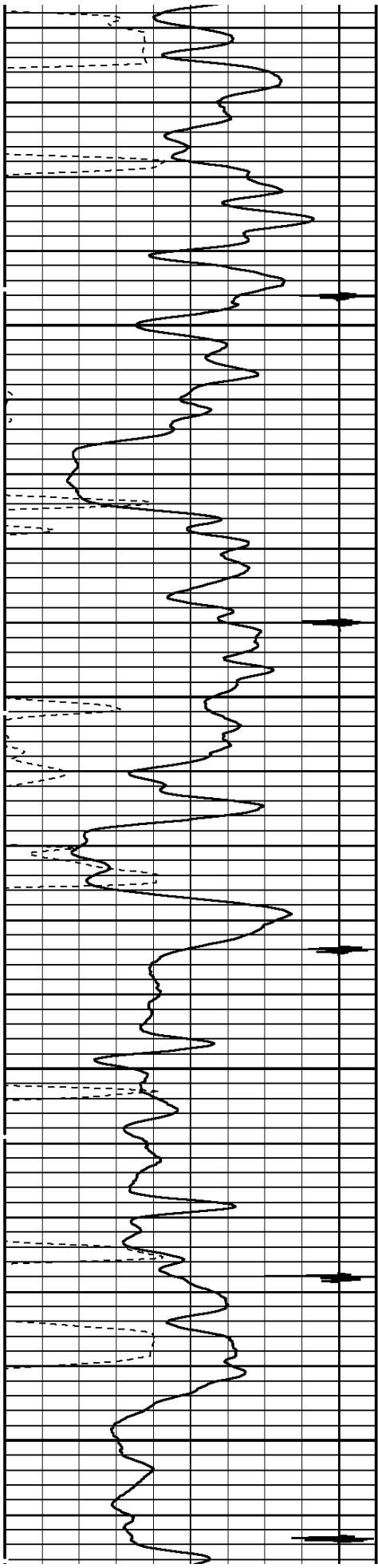




7000

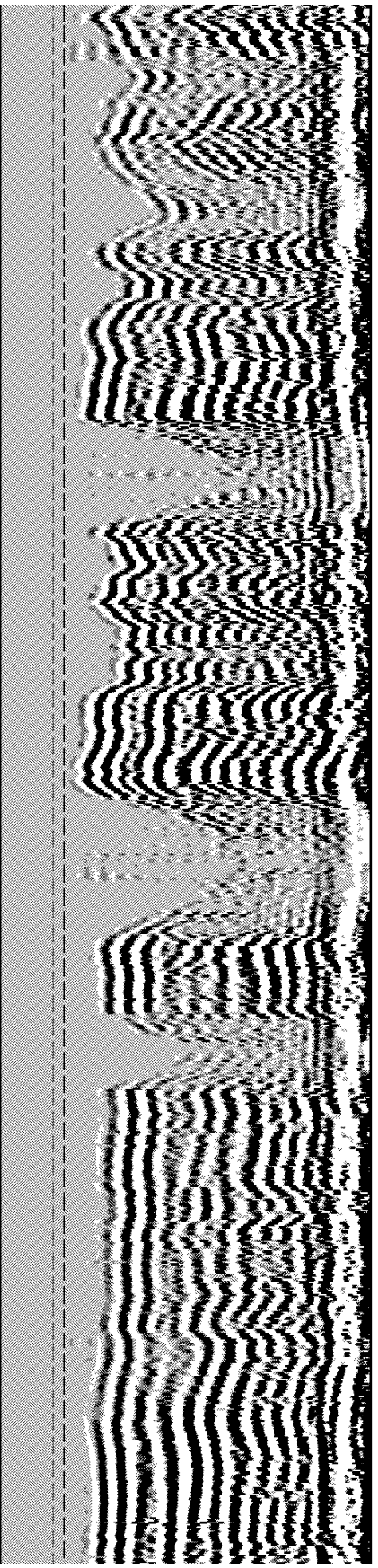
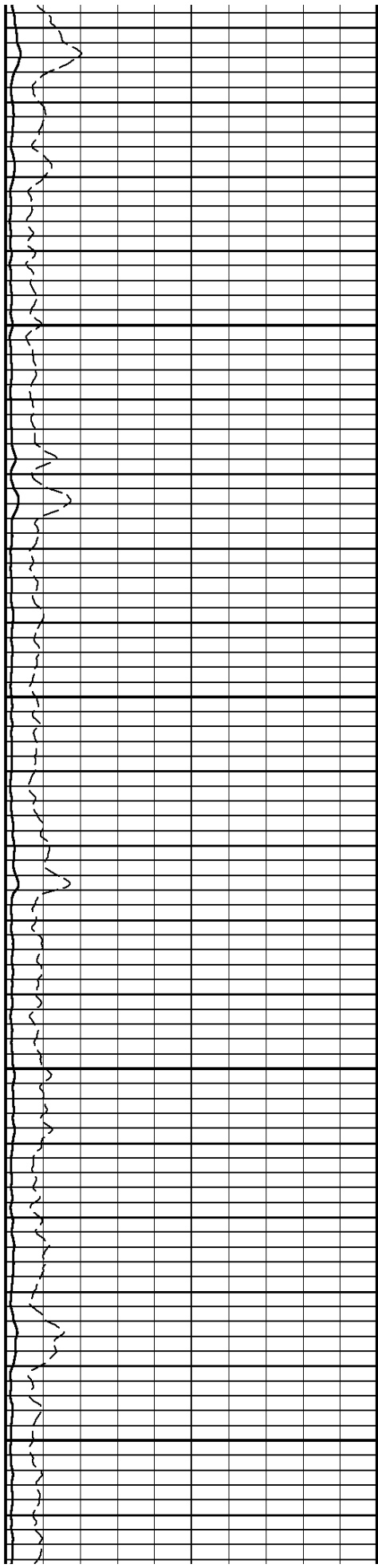
7100

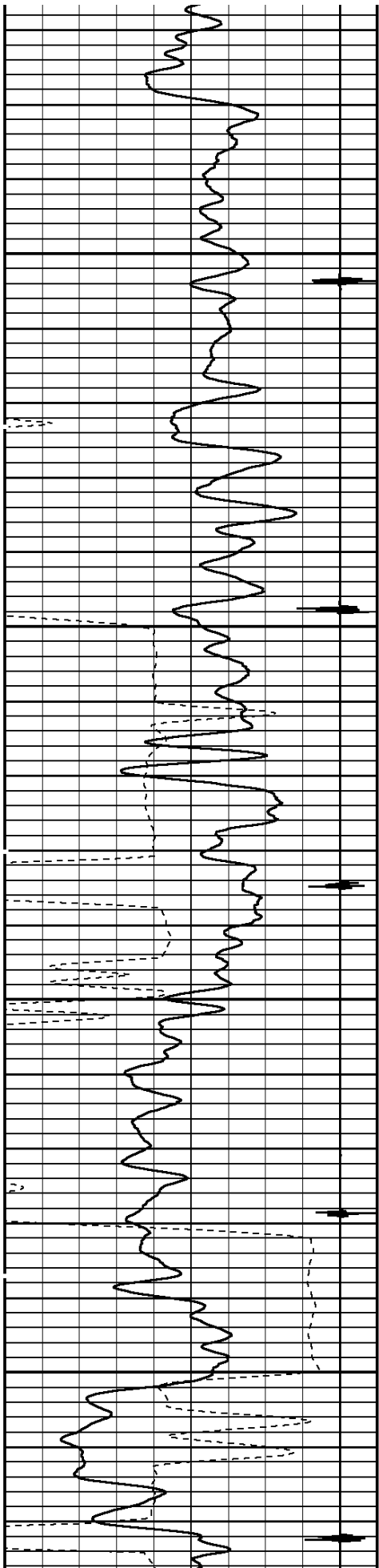




7200

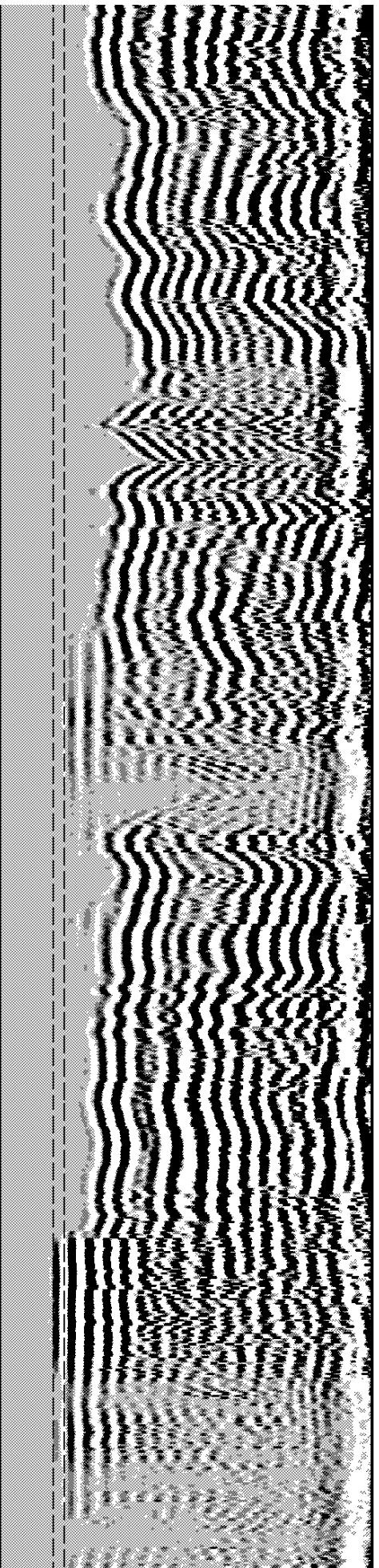
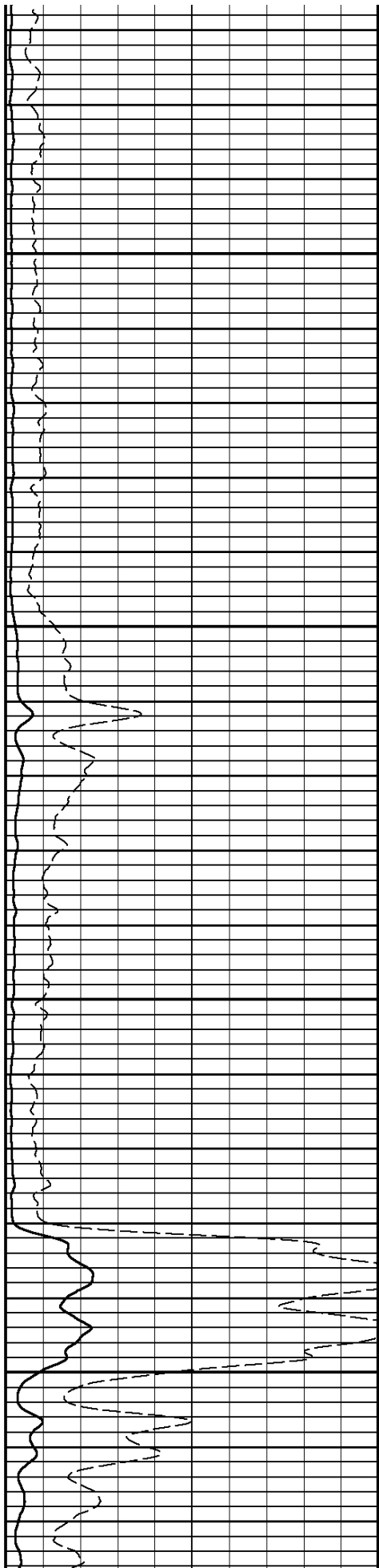
7300

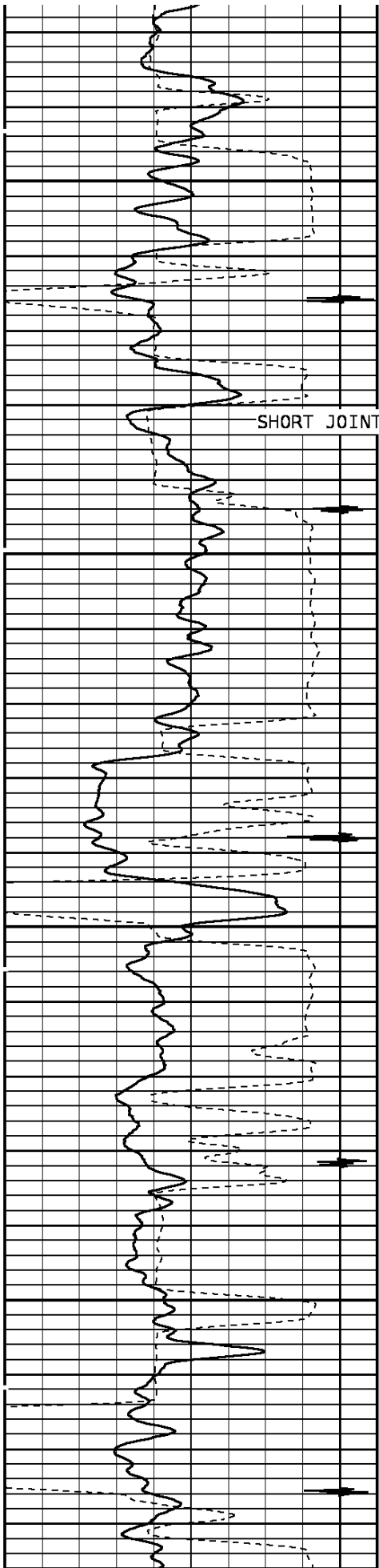




7400

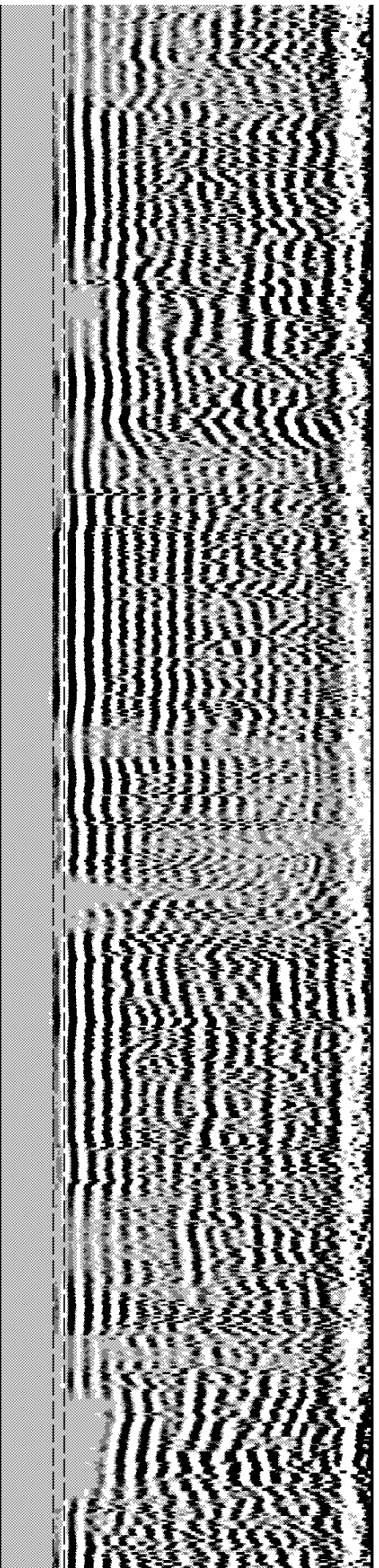
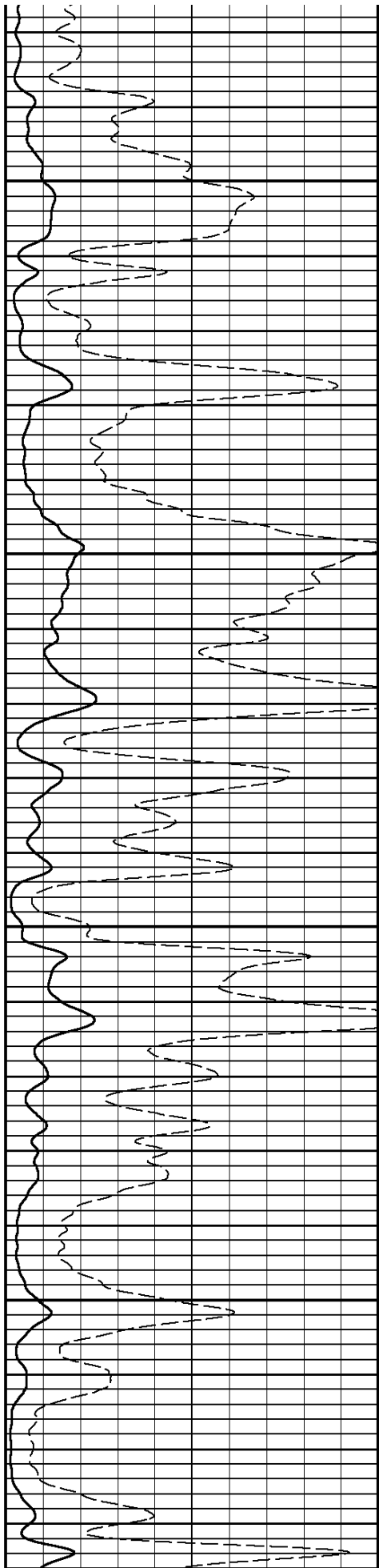
7500

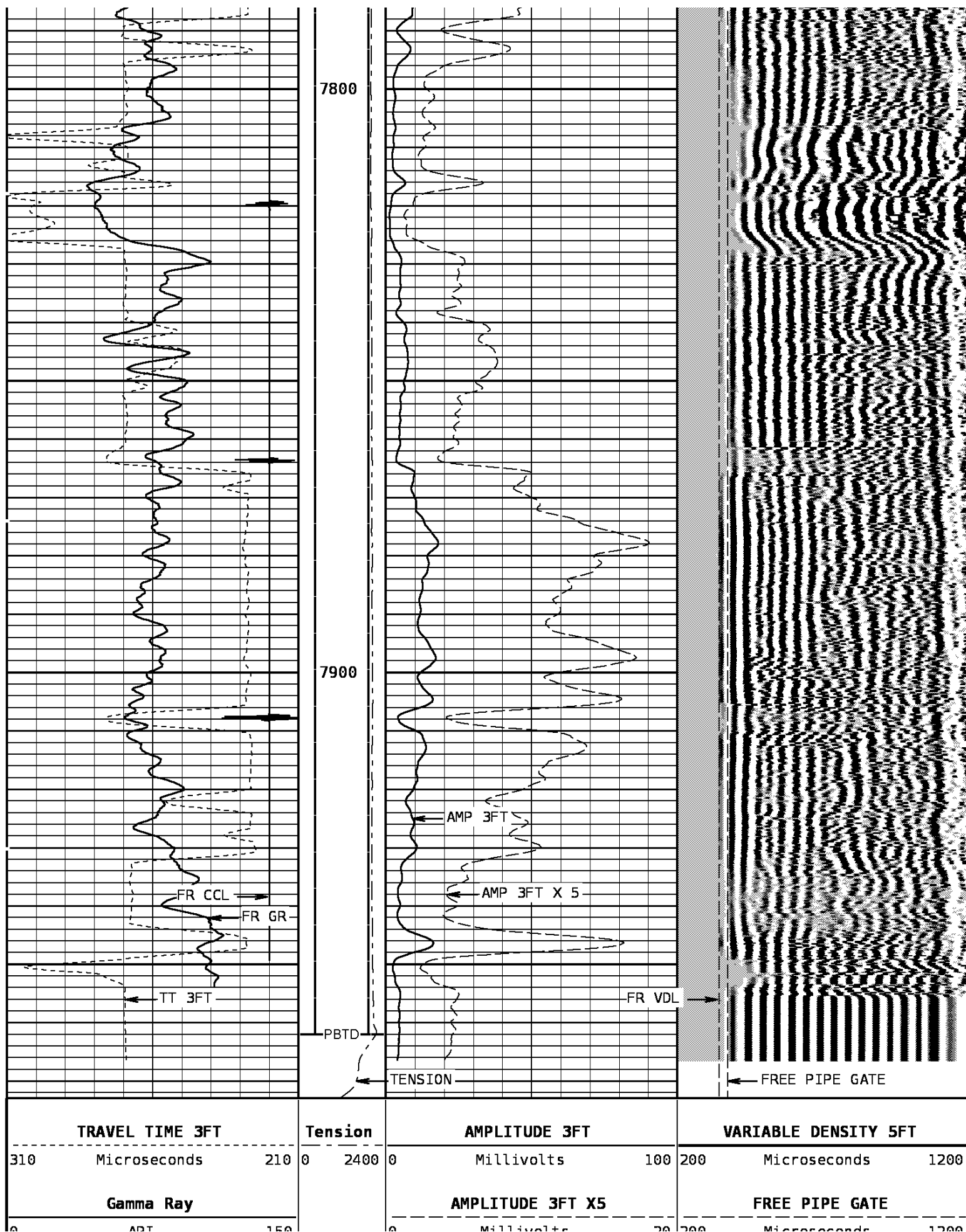




7600

7700





0	API	150	0	MILLIVOLTS	20	200	MICROSECONDS	1200
Collar Locator						FREE PIPE GATE		
-4000	Millivolts	440				200	Microseconds	1200

START DEPTH: **7973.0** DIRECTION: **UP** DATE: **01/13/2009** TIME: **05:03** MODE: **ORIGINAL**
 156893 CBLMAIN

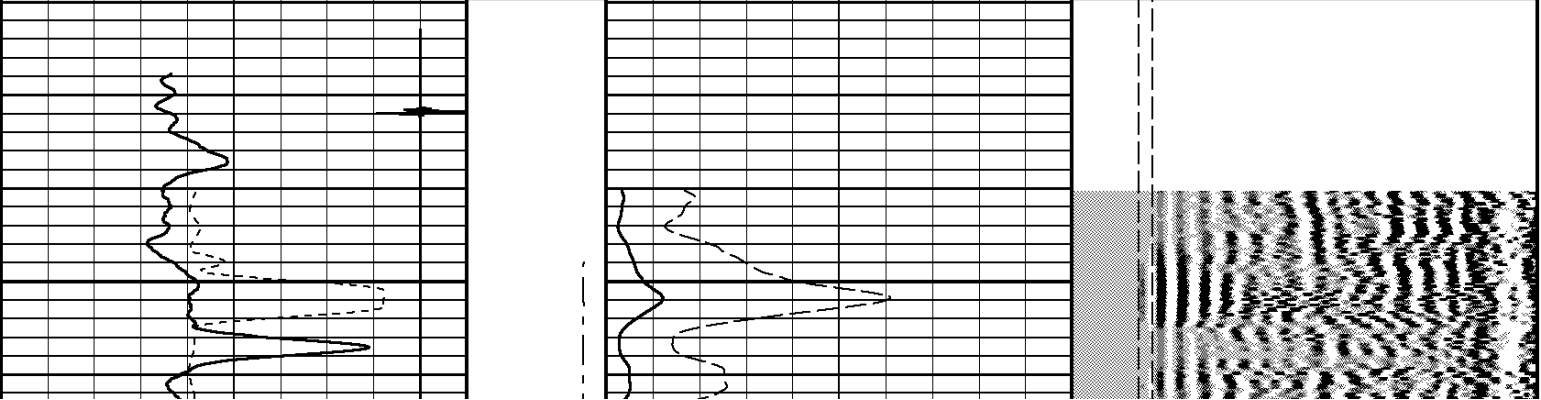
MAIN PASS
 DEPTH SCALE: **5":100'** VERSION: **80214133R"**

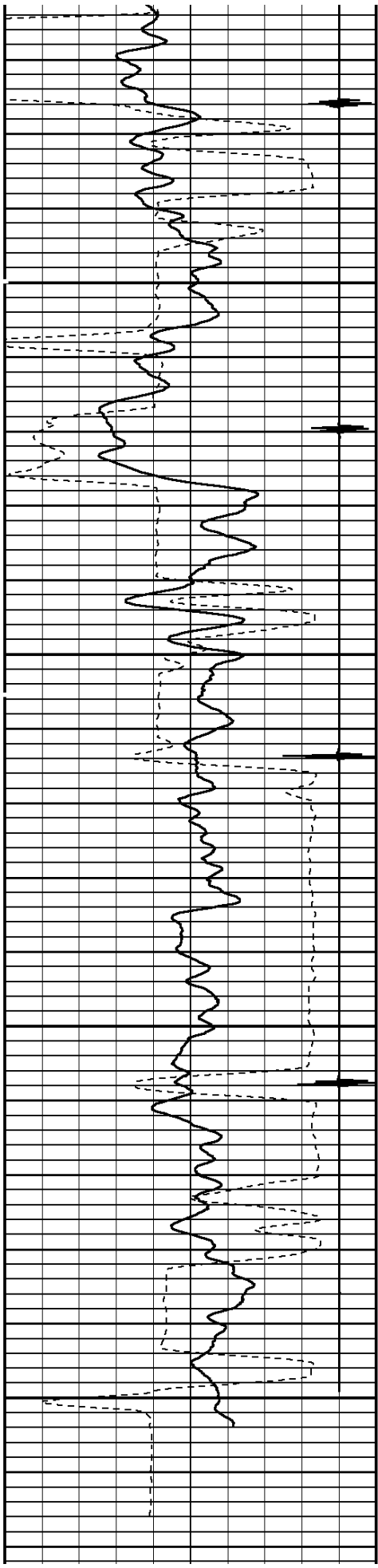
REMARKS
 LOGGED WITH 0 PSI @ SURFACE

DEPTH SCALE: **5":100'** VERSION: **80214133R"**
 REPEAT PASS

156893 CBLREPEAT
 FINISH DEPTH: **7719.8** Feet DIRECTION: **UP** DATE: **01/13/2009** TIME: **04:53** MODE: **ORIGINAL**

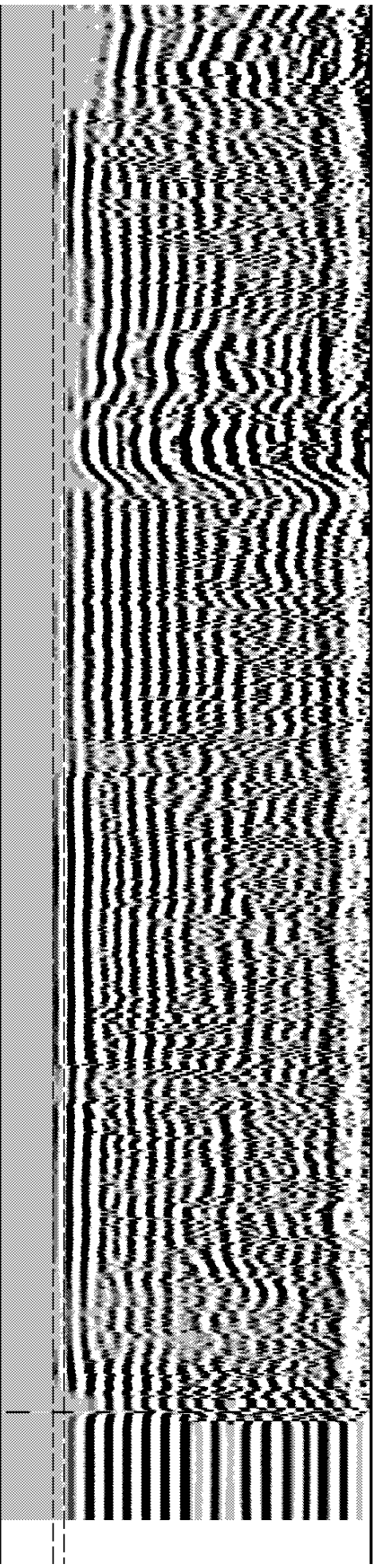
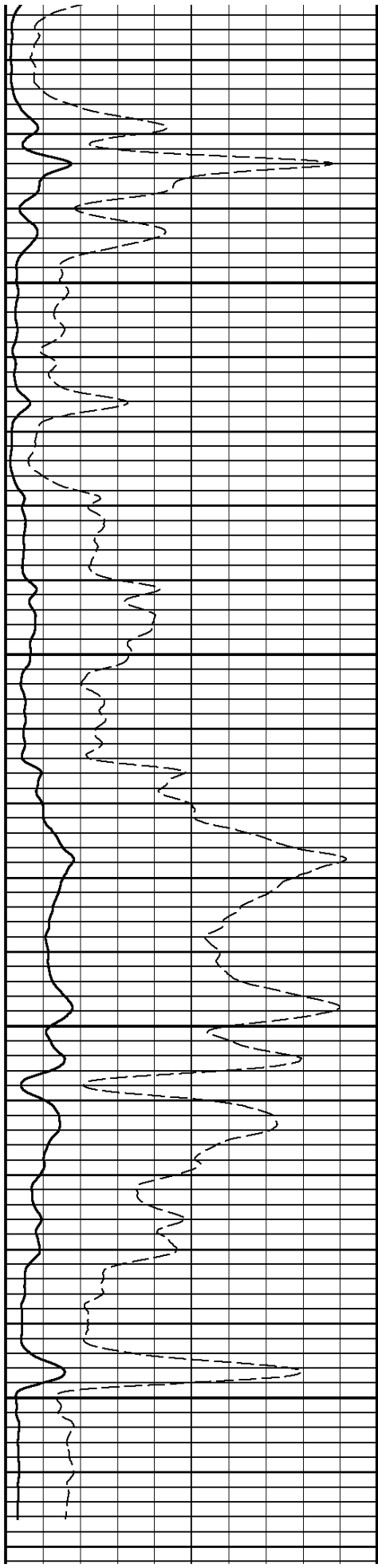
Collar Locator						FREE PIPE GATE		
-4000	Millivolts	440				200	Microseconds	1200
Gamma Ray			AMPLITUDE 3FT X5			FREE PIPE GATE		
0	API	150	0	Millivolts	20	200	Microseconds	1200
TRAVEL TIME 3FT			Tension	AMPLITUDE 3FT		VARIABLE DENSITY 5FT		
310	Microseconds	210	0 2400	0	Millivolts 100	200	Microseconds	1200





7800

7900



TRAVEL TIME 3FT			Tension	AMPLITUDE 3FT		VARIABLE DENSITY 5FT			
310	Microseconds	210		0	2400	0	200	Microseconds	1200
Gamma Ray				AMPLITUDE 3FT X5		FREE PIPE GATE			
0	API	150		0	20	200	200	Microseconds	1200
Collar Locator					FREE PIPE GATE				
-4000	Millivolts	440			200	200	Microseconds	1200	

START DEPTH: 7972.8	DIRECTION: UP	DATE: 01/13/2009	TIME: 04:53	MODE: ORIGINAL
156893 CBLREPEAT				

REPEAT PASS	
DEPTH SCALE: 5":100'	VERSION: 80214133R"

1 7/16 Adapter Head

Weight 2.2 LB.
 Length 12 IN.
 Max. Diameter 1.44 IN.

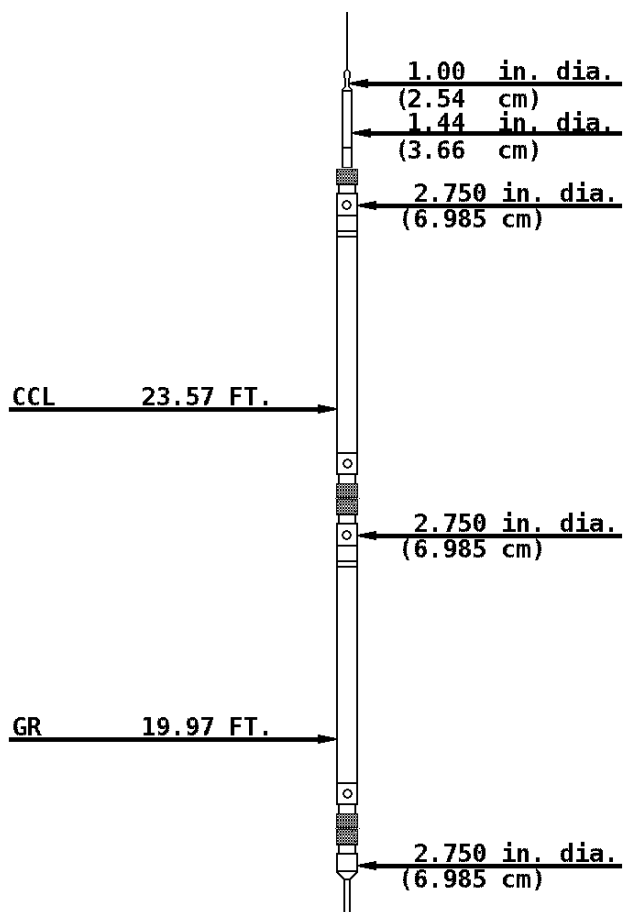
Total Stack Weight 208.0 LBS. in air
 Total Stack Length 25.34 FT.

Collar Locator

Weight 39.8 LBS.
 Length 3.40 FT.
 Max. Diameter 2.75 IN.

Slim Hole Gamma Ray

Weight 39.8 LBS.
 Length 4.71 FT.
 Max. Diameter 2.750 IN.



Slim Hole Centralizer

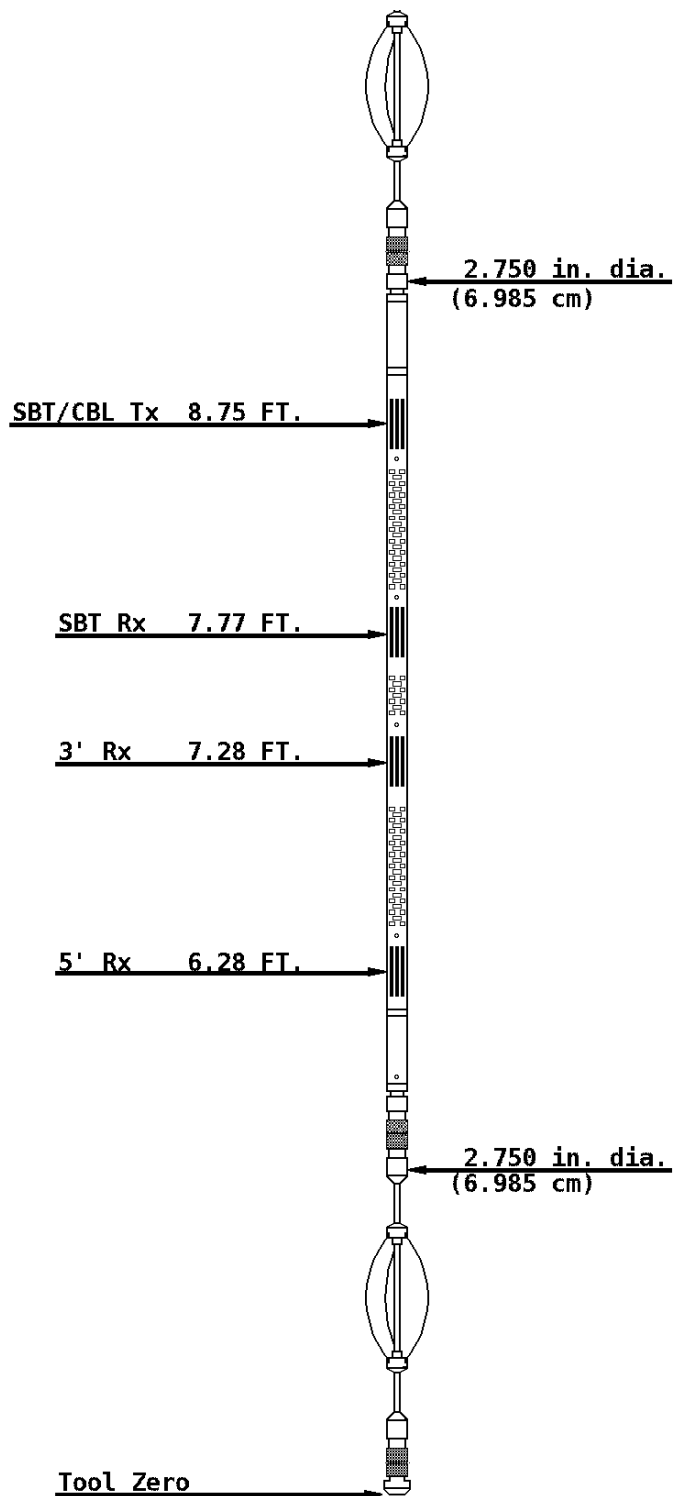
Weight 22 LBS.
Length 3.08 FT.
Max. Diameter 2.750 IN.

Sector Bond

Weight 89.2 LBS.
Length 10.32 FT.
Max. Diameter 2.750 IN.

Slim Hole Centralizer

Weight 15.0 LBS.
Length 2.82 FT.
Max. Diameter 2.750 IN.



COMPANY BILL BARRETT CORPORATION

WELL JCJ 21D-21-692

FIELD MAMM CREEK

COUNTY GARFIELD

STATE COLORADO



Weatherford®
