

RMWS

ROCKY MOUNTAIN WIRELINE SERVICE

CEMENT BOND LOG

GAMMA RAY / CCL

Company

WILLIAMS PRODUCTION CO.

Well

GM 311-6

Field

GRAND VALLEY

County

GARFIELD

State

COLORADO

Location

API #: 06045163500000  
SHL: 1317 FNL & 1240 FNL  
BHL: 519 FNL & 489 FNL

Other Services

SEC

08

TWMP

07S

RGE

98W

Elevation

6398'

Elevation

K.B. 6424'

D.F. 6424'

G.L. 6398'

Permanent Datum

G.L.

Log Measured From

K.B.

Drilling Measured From

K.B.

Date

03-04-2009

Run Number

ONE

Depth Driller

7250

Present Depth Driller

7250

Depth Logger

6704

Bottom Logged Interval

6704

Top Log Interval

6800

Fluid Level

700

Type Fluid

WATER

Max. Recorded Temp.

N/A

Estimated Cement Top

SEE LOG

Equipment Number

218

Location

GRAND JCT

Recorded By

H-SPENCER

Witnessed By

MS-SKALLA

Run Number

ONE

Bit

13 1/2"

Size

9.625"

Weight

782

From

10

ONE

13 1/2"

SIZE

9.625"

WGT

782

FROM

10

TWO

7.875"

SIZE

7.250"

WGT

457

FROM

11.875"

TWO

7.875"

SIZE

7.250"

WGT

457

FROM

11.875"

<<< Fold Here >>>

All interpretations are opinions based on inferences from electrical or other measurements and we cannot and do not guarantee the accuracy or correctness of any interpretation, and we shall not, except in the case of gross or willful negligence on our part, be liable or responsible for any loss, costs, damages, or expenses incurred or sustained by anyone resulting from any interpretation made by any of our officers, agents or employees. These interpretations are also subject to our general terms and conditions set out in our current Price Schedule.

WARRIOR 7.0 SOFTWARE - Comments

THIS LOG WAS DEPTH CORRELATED WITH THE HLS CBL DATED ON 16-JAN-2009

Database File: 030409\_gm\_311\_6.db  
Dataset Pathname: cbl/pass2  
Dataset Creation: Wed Mar 04 10:44:47 2009 by Log Std Casedhole 08121

Calibration Report

Gamma Ray Calibration Report

Serial Number: TEKCO234\_352  
Tool Model: TEKCO234  
Performed: Tue Jul 29 08:24:09 2008

Calibrator Value: 1.0

Background Reading: 0.0 cps  
Calibrator Reading: 1.0 cps

Sensitivity: 1.3000 /cps

CBL Calibration Report

Serial Number: TEKCO\_8043  
Tool Model: TEKCO  
Performed: Fri Feb 20 11:43:53 2009

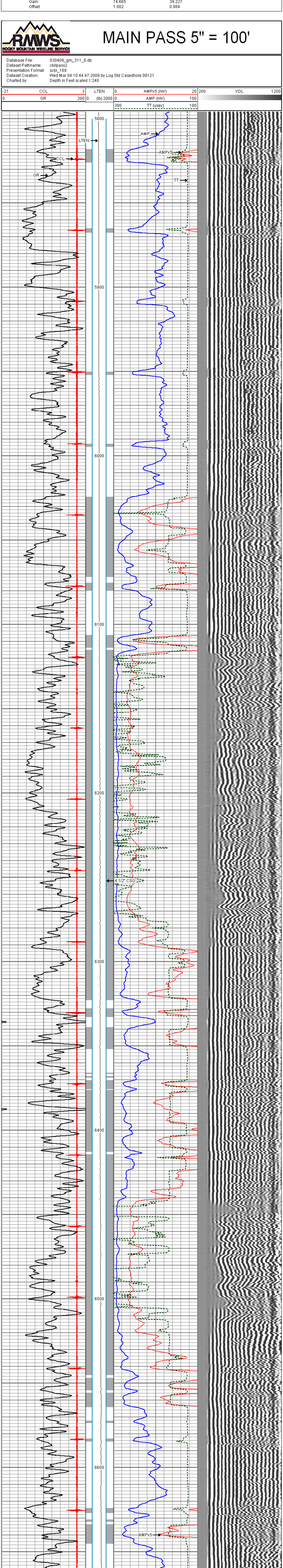
Depth: 2296.433 ft  
Casing Diameter: 4.500 in

3' Spacing: 1.000  
5' Spacing: 1.000

Signal Zero: 81.196 mV  
Calibrated Amplitude: 81.196 mV  
Reading at Signal Zero: -0.000 mV  
Reading in Free Pipe: 2.045 V

Gain: 74.665  
Offset: 1.002

39.227  
0.984



RMWS

ROCKY MOUNTAIN WIRELINE SERVICE

MAIN PASS 5" = 100'

Sensor	Offset (ft)	Schematic	Description	Len (ft)	OD (in)	Wt (lb)
CCL	18.75		CCL-TITAN275 (TITAN275_102) Titan 2 3/4" CCL	1.92	2.75	10.00
			TITAN169 tool test	2.17	1.69	5.00
WVF3FT	10.85		CBLTEKCO-TEKCO (TEKCO_8043) DEMO TOOL - DEMENSIONS INVALID	10.00	3.25	50.00
WVF5FT	9.85					
WVFCAL WVFSYNC	5.85 5.85		TITAN169 tool test	2.17	1.69	5.00
			GR-TEKCO234 (TEKCO234_352) Tekco 2 3/4" Gamma Ray	3.69	2.75	20.00
GR	1.00					

Dataset: 030409\_gm\_311\_6.db; field/well/cbl/pass2  
Total Length: 19.94 ft  
Total Weight: 90.00 lb  
O.D. 3.25 in