



SUPERIOR
Black Lick, Pa.
Mercer, Pa.
Wooster, Oh.
Cleveland, Ok.
Trinidad, Co.

CEMENT BOND GAMMA RAY 1000 PSI

Company XTO Energy Inc.

Well New Elk 25-08

Field Purgatorie River

County Las Animas

State CO

Company XTO Energy Inc.

Well New Elk 25-08

Field Purgatorie River

County Las Animas

State CO

Location:

API # : 05 071 09496 00

2103' FNL & 737' FEL

SEC 25 TWP 33S RGE 68W

Permanent Datum
Log Measured From
Drilling Measured From

Ground Level
Ground Level
Ground Level

Elevation 7347'

Other Services
PRES
CONTROL/
TEMP

Elevation

K.B. -----
D.F. -----
G.L. 7347'

Date

4/3/08

Run Number

one

Depth Driller

1840'

Depth Logger

1758'

Bottom Logged Interval

1754'

Top Log Interval

Surf.

Open Hole Size

7 7/8"

Type Fluid

water

Density / Viscosity

///

Max. Recorded Temp.

134F

Estimated Cement Top

522'

Time Well Ready

ROA

Time Logger on Bottom

9:40

Equipment Number

0703

Location

Trinidad

Recorded By

Worley

Witnessed By

Mr. Rensink

Run Number

Bit

From

To

Size

Weight

From

To

Casing Record

Size

8 5/8"

Wgt/Ft

Top

Bottom

Surface String

8 5/8"

Wgt/Ft

Top

Bottom

Prot. String

5 1/2"

Wgt/Ft

Top

Bottom

Production String

5 1/2"

Wgt/Ft

Top

Bottom

Liner

5 1/2"

Wgt/Ft

Top

Bottom

Size

8 5/8"

Wgt/Ft

Top

Bottom

Prot. String

5 1/2"

Wgt/Ft

Top

Bottom

NA

NA

NA

NA

NA

NA

NA

NA

NA

NA

NA

NA

NA

NA

NA

NA

NA

NA

NA

NA

NA

NA

NA

NA

NA

NA

NA

NA

NA

NA

NA

NA

NA

NA

NA

NA

NA

NA

NA

NA

NA

NA

NA

NA

NA

NA

NA

NA

NA

NA

NA

NA

NA

NA

NA

NA

NA

NA

NA

NA

NA

NA

NA

NA

NA

NA

NA

NA

NA

NA

NA

NA

NA

NA

NA

NA

NA

NA

NA

NA

NA

NA

NA

NA

NA

NA

NA

NA

NA

NA

NA

NA

NA

NA

NA

NA

NA

NA

NA

NA

NA

NA

NA

NA

NA

NA

NA

NA

NA

NA

NA

NA

NA

NA

NA

NA

NA

NA

NA

NA

NA

NA

NA

NA

NA

NA

NA

NA

NA

NA

NA

NA

NA

NA

NA

NA

NA

NA

NA

NA

NA

NA

NA

NA

NA

NA

NA

NA

NA

NA

NA

NA

NA

NA

NA

NA

NA

NA

NA

NA

NA

NA

NA

NA

NA

NA

NA

NA

NA

NA

NA

NA

NA

NA

NA

NA

NA

NA

NA

NA

NA

NA

NA

NA

NA

NA

NA

NA

NA

NA

NA

NA

NA

NA

NA

NA

NA

NA

NA

NA

NA

NA

NA

NA

NA

NA

NA

NA

NA

NA

NA

NA

NA

NA

NA

NA

NA

NA

NA

NA

NA

NA

NA

NA

NA

NA

NA

NA

NA

NA

NA

NA

NA

NA

NA

NA

NA

NA

NA

NA

NA

NA

NA

NA

NA

NA

NA

NA

NA

NA

NA

NA

NA

NA

NA

NA

NA

NA

NA

NA

NA

NA

NA

NA

NA

NA

NA

NA

NA

NA

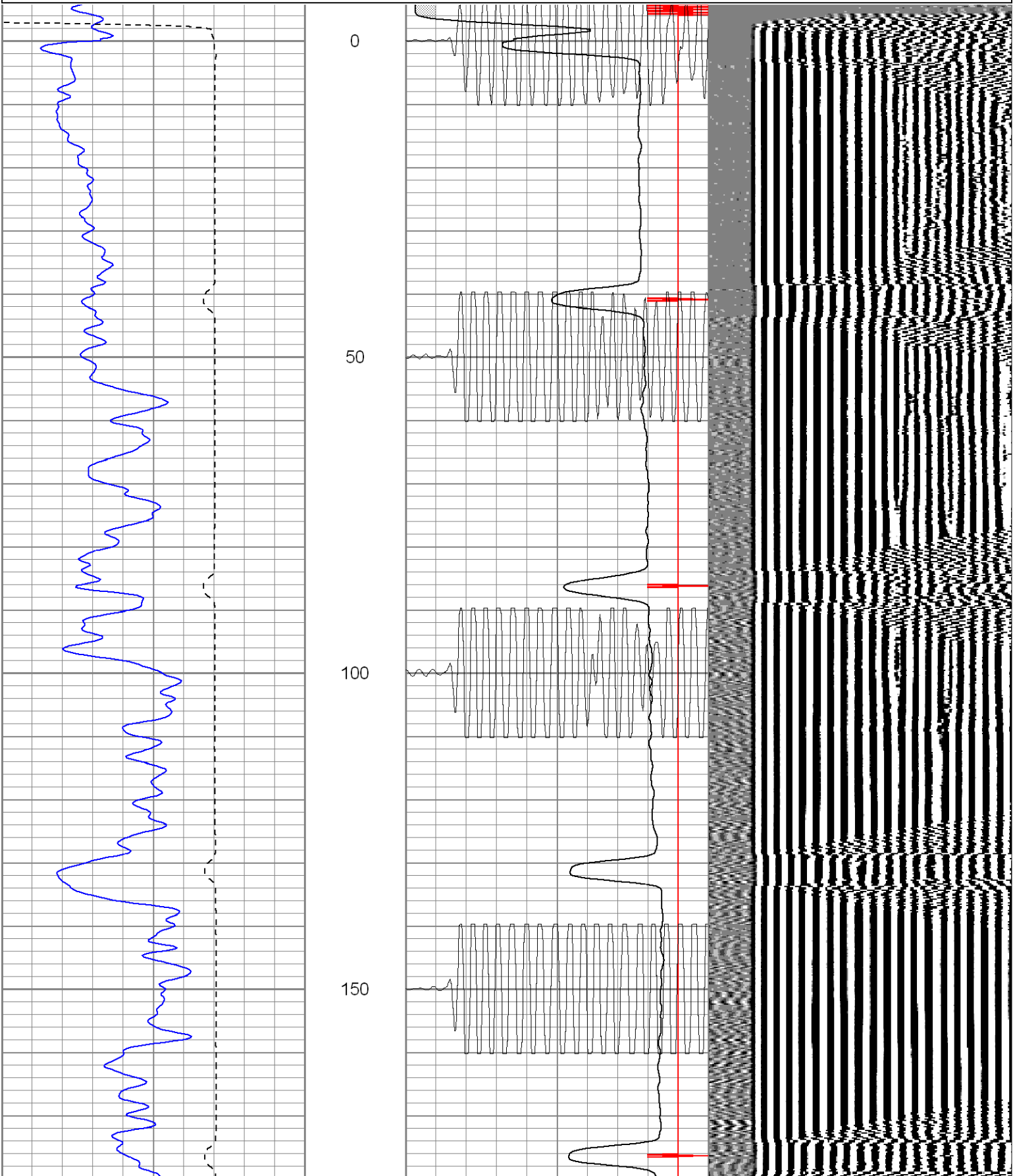
NA

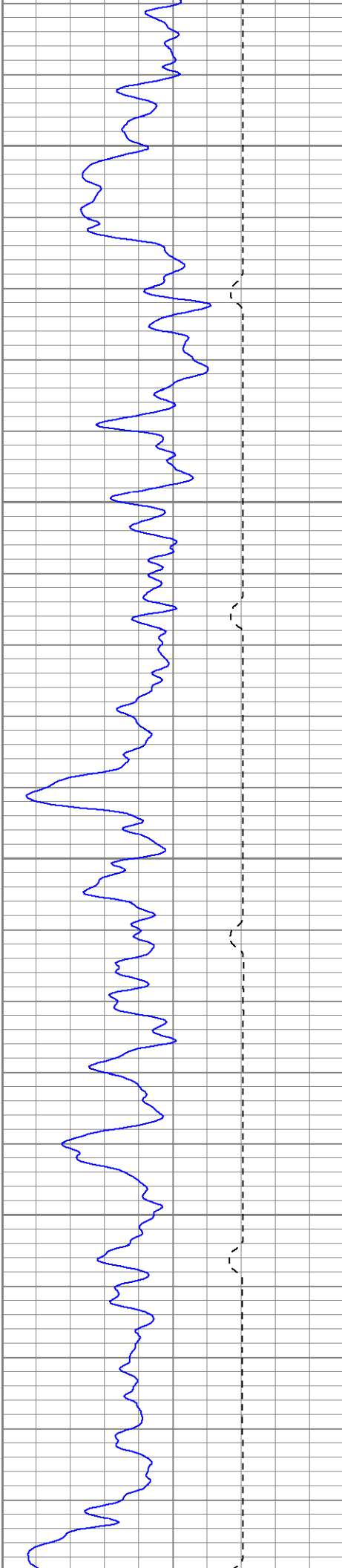
NA

<

Database File: ne25-08b4308.db
Dataset Pathname: pass2.2
Presentation Format: cblrt
Dataset Creation: Thu Apr 03 10:49:17 2008 by Calc Open-Cased 071220
Charted by: Depth in Feet scaled 1:240

0	GR (GAPI)	200	0	AMP3 (mV)	100	200	CBL5	1200
400	TT3 (usec)	200	18	CCL	-2			
			200	CBL5	1200			





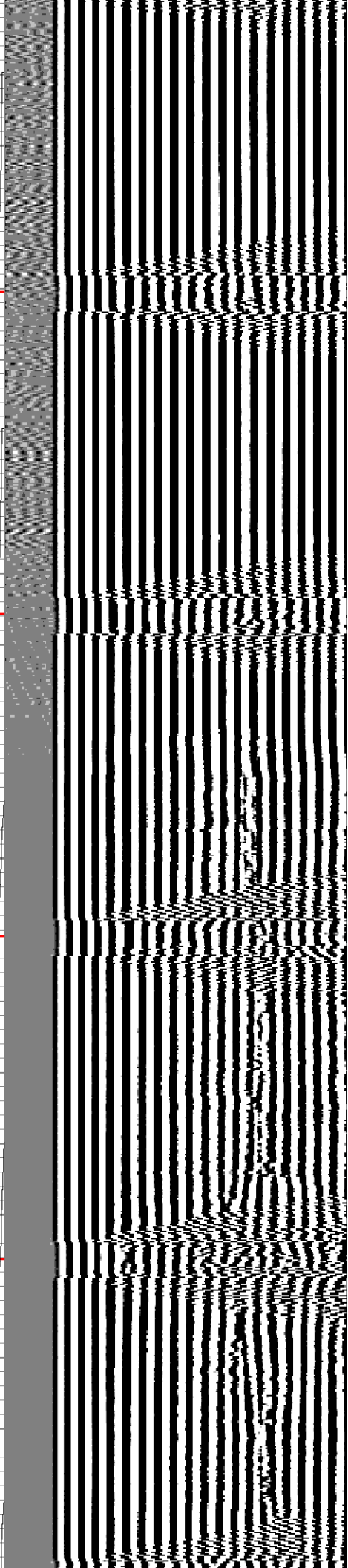
200

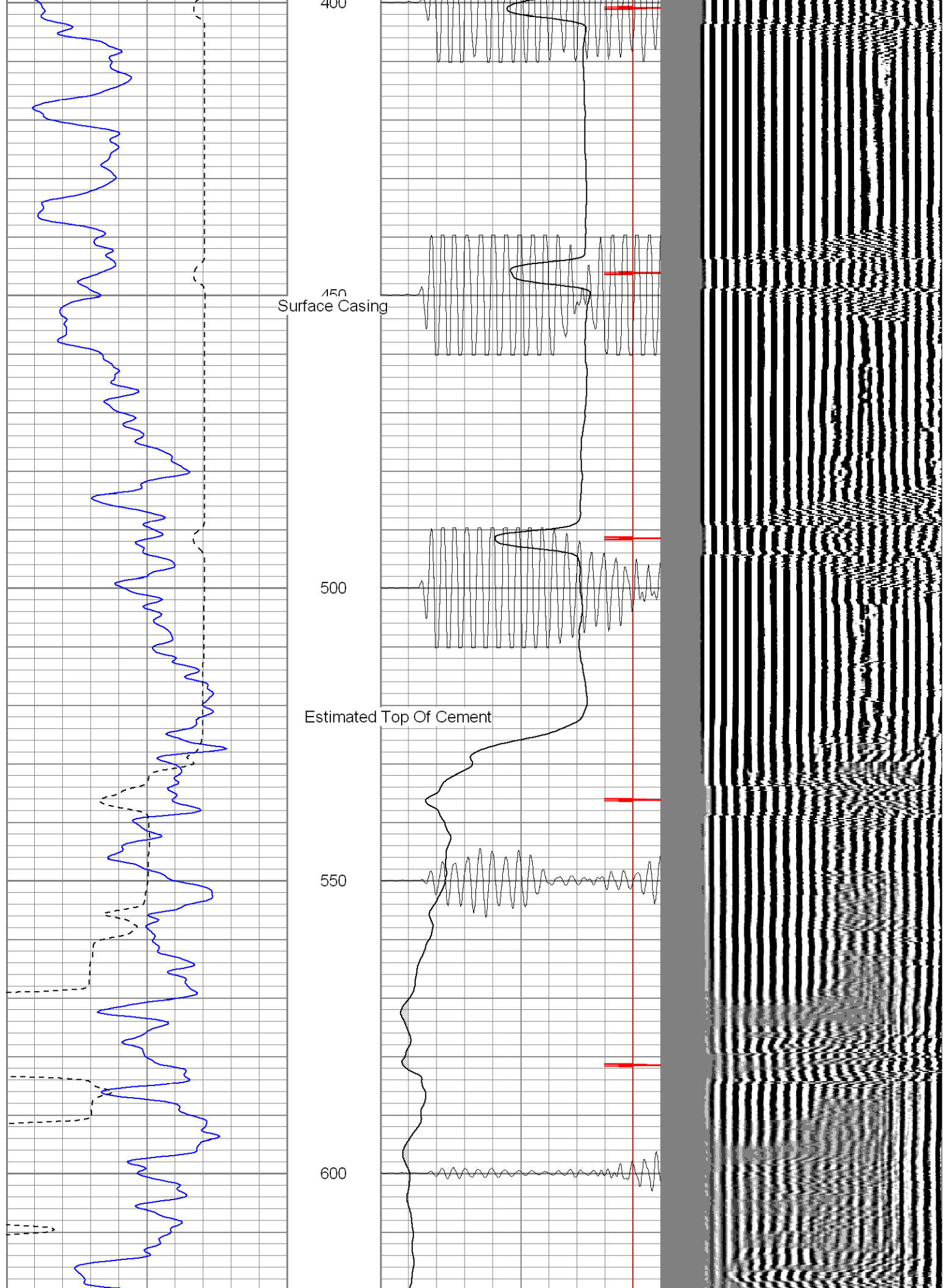
250

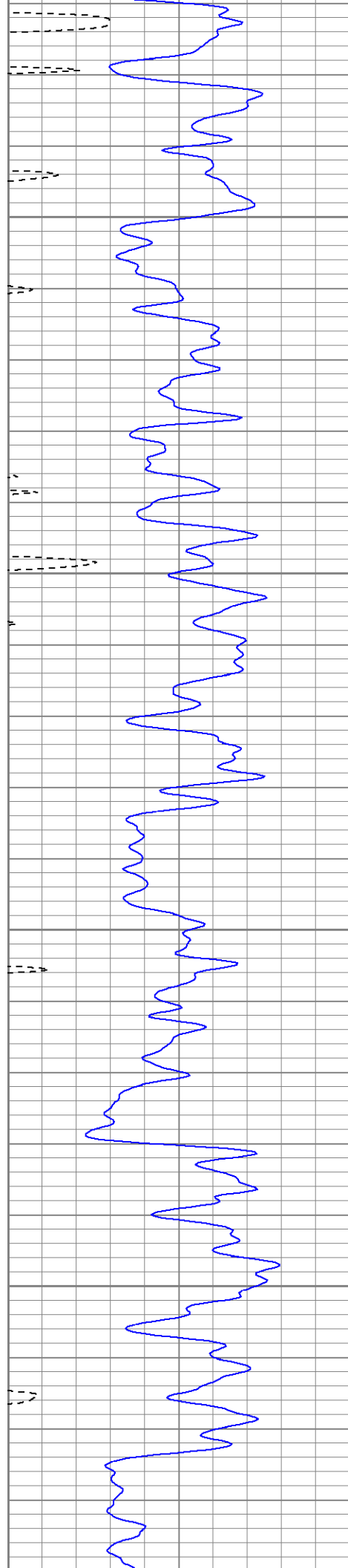
300

350

400





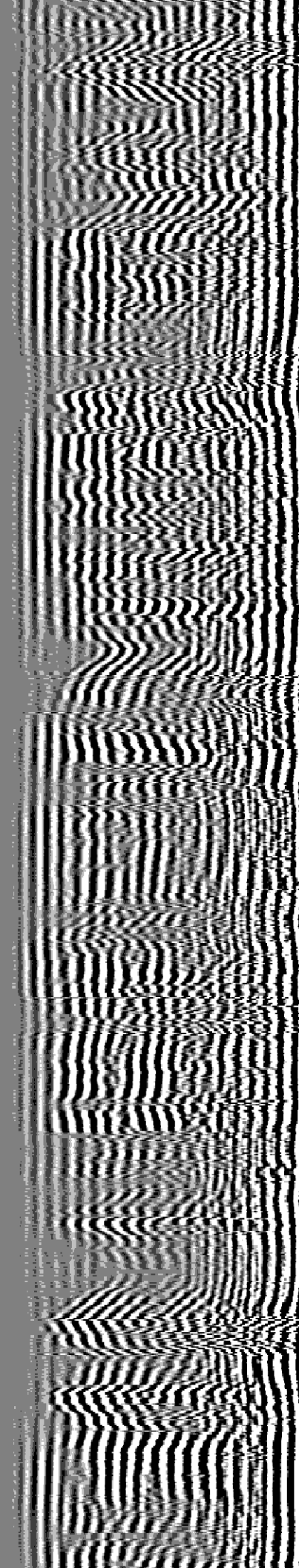


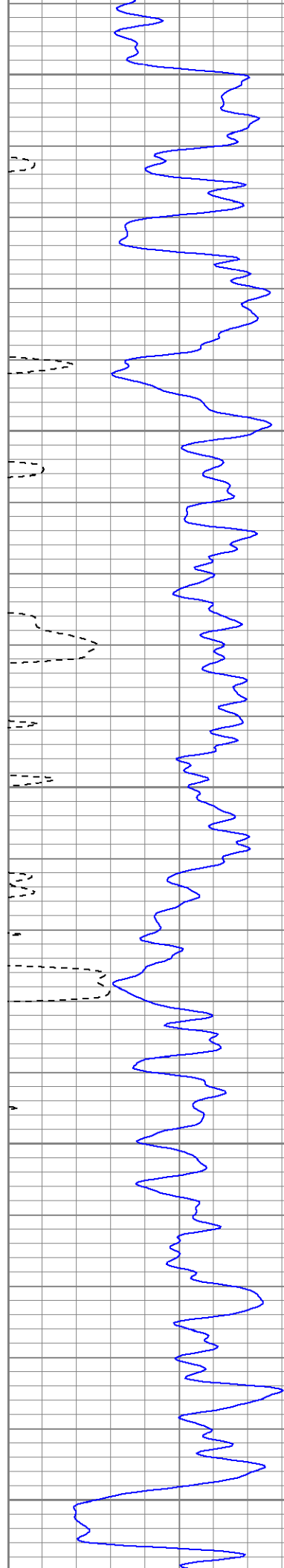
650

700

750

800





850

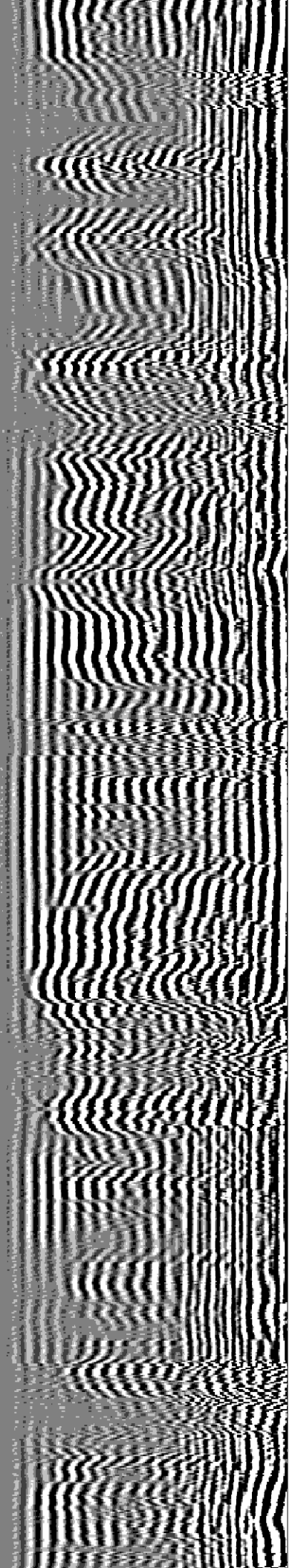
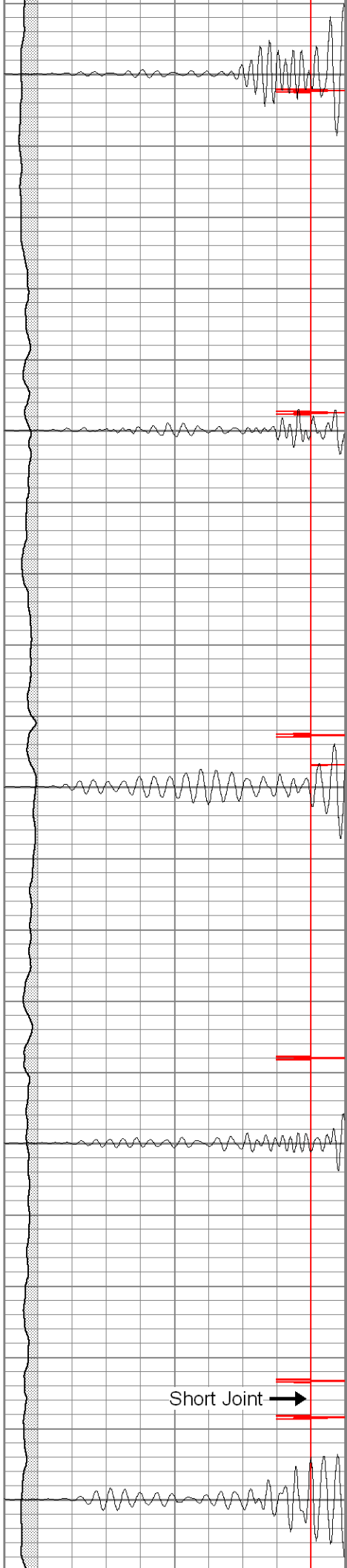
900

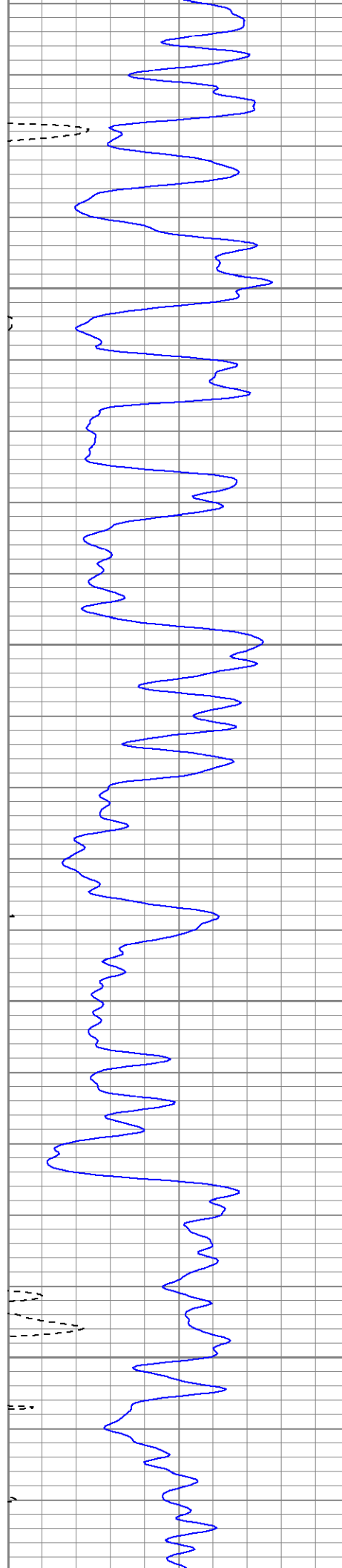
950

1000

1050

Short Joint →



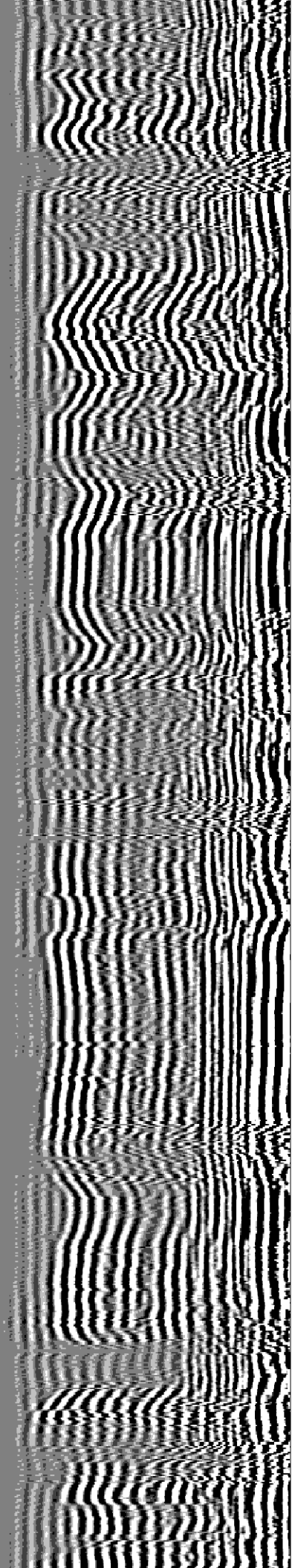


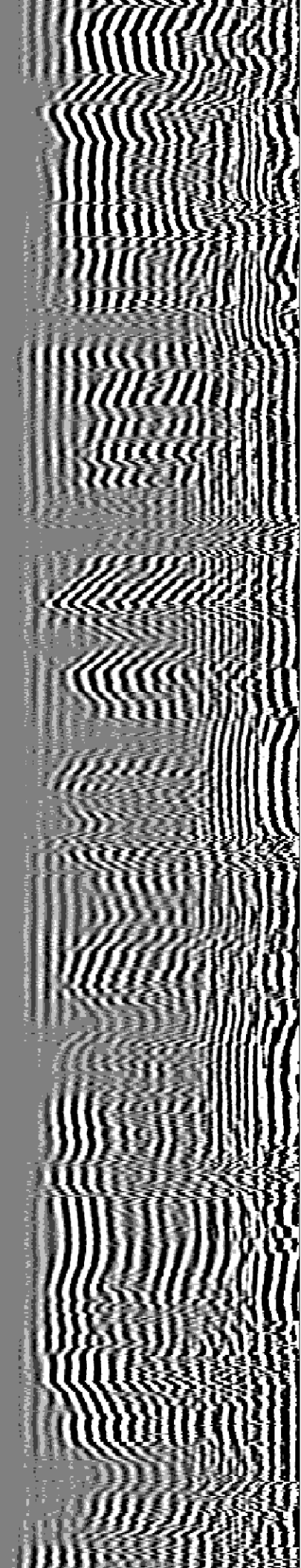
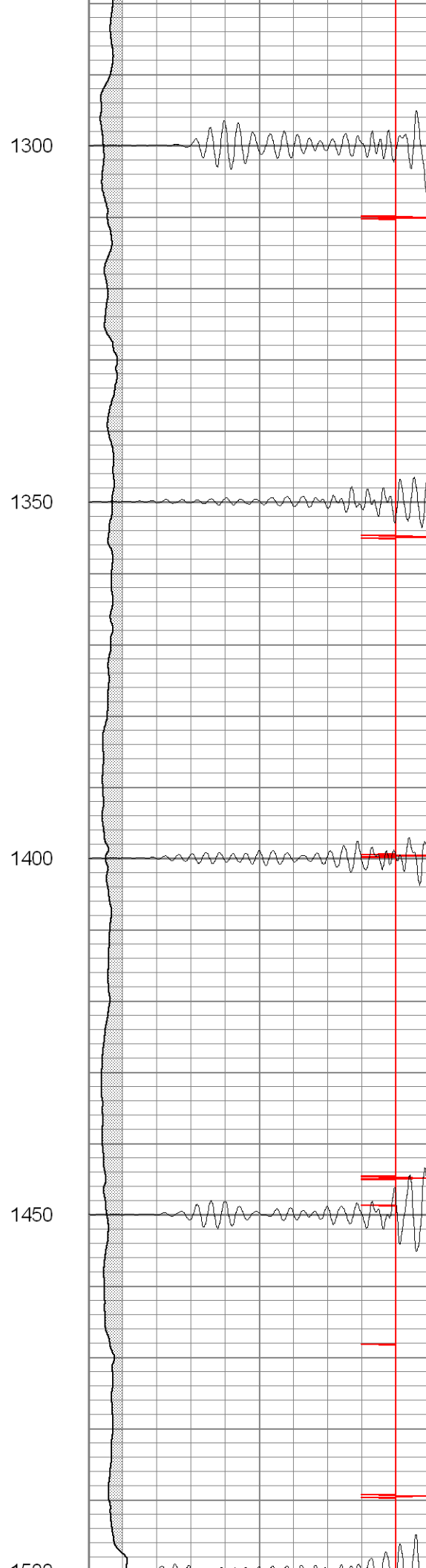
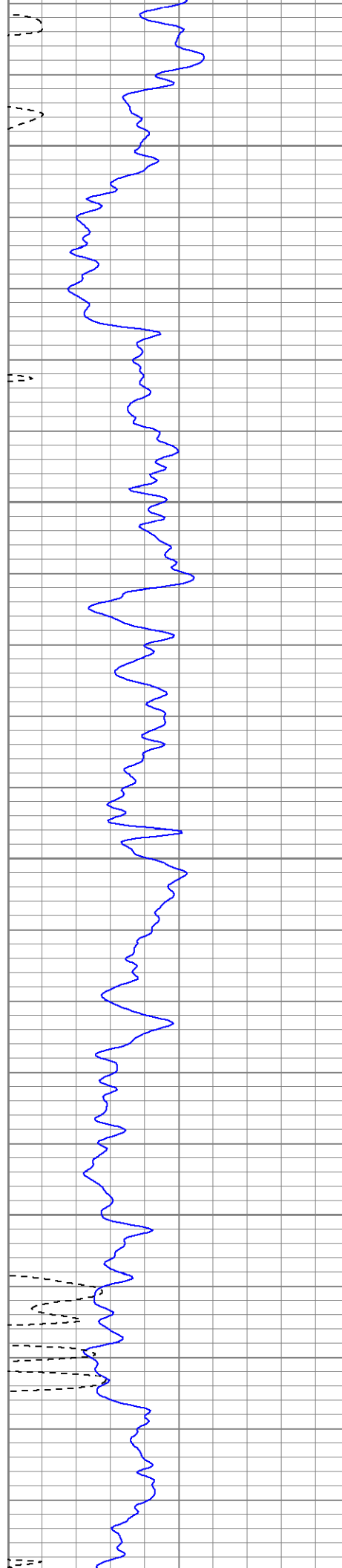
1100

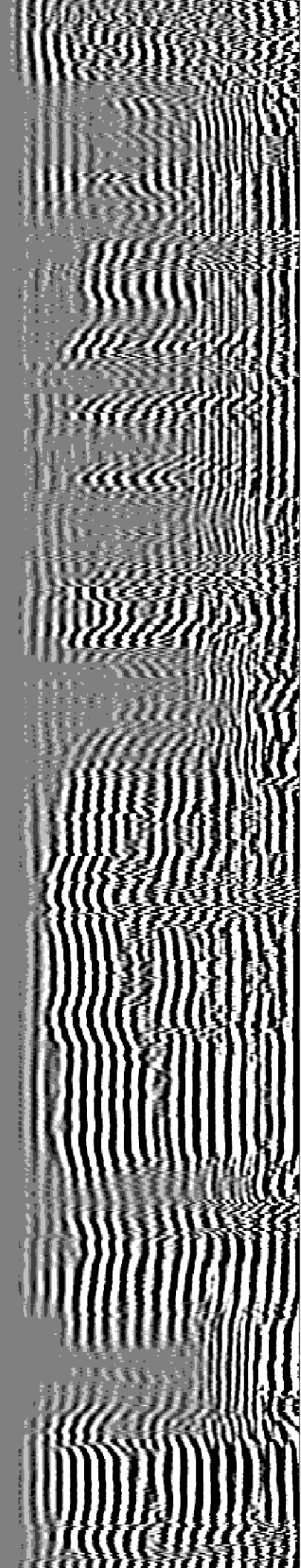
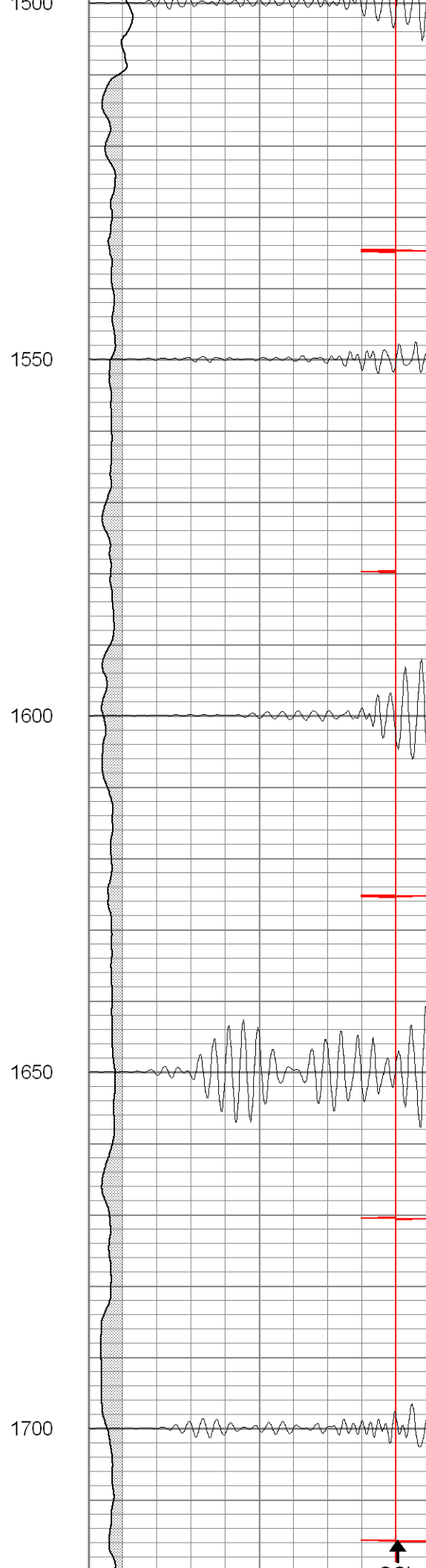
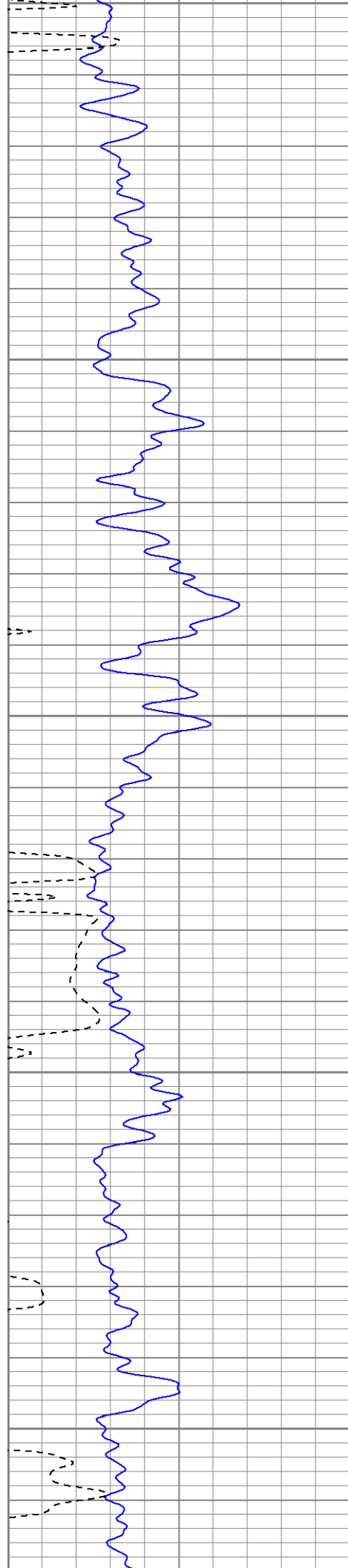
1150

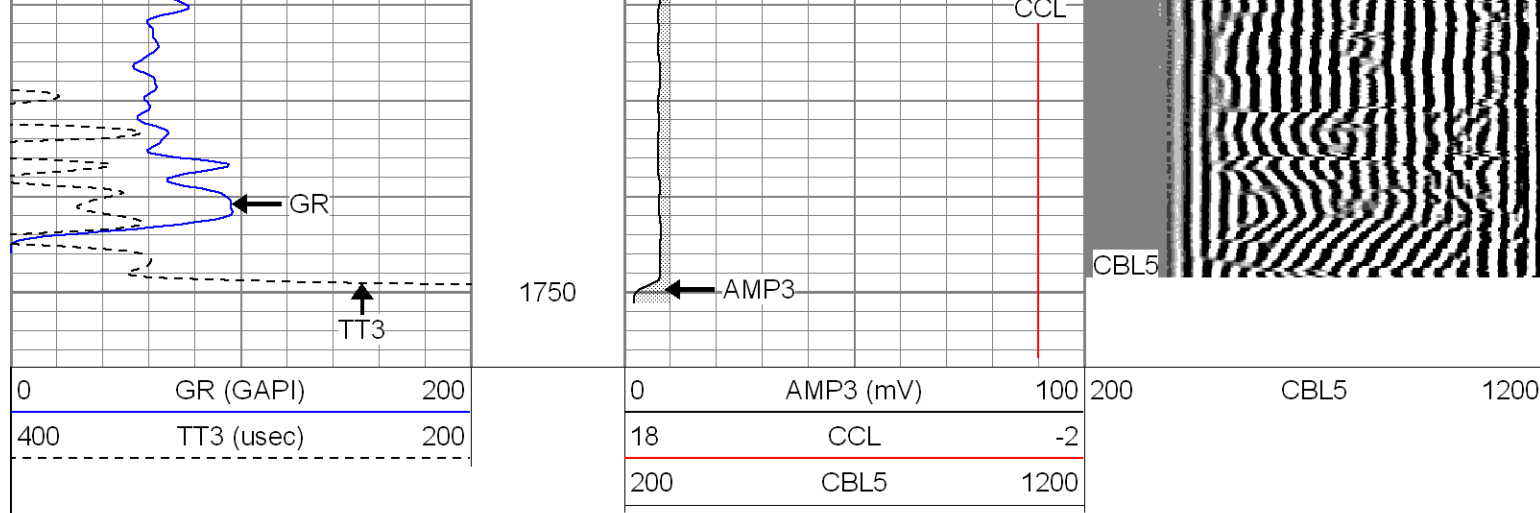
1200

1250







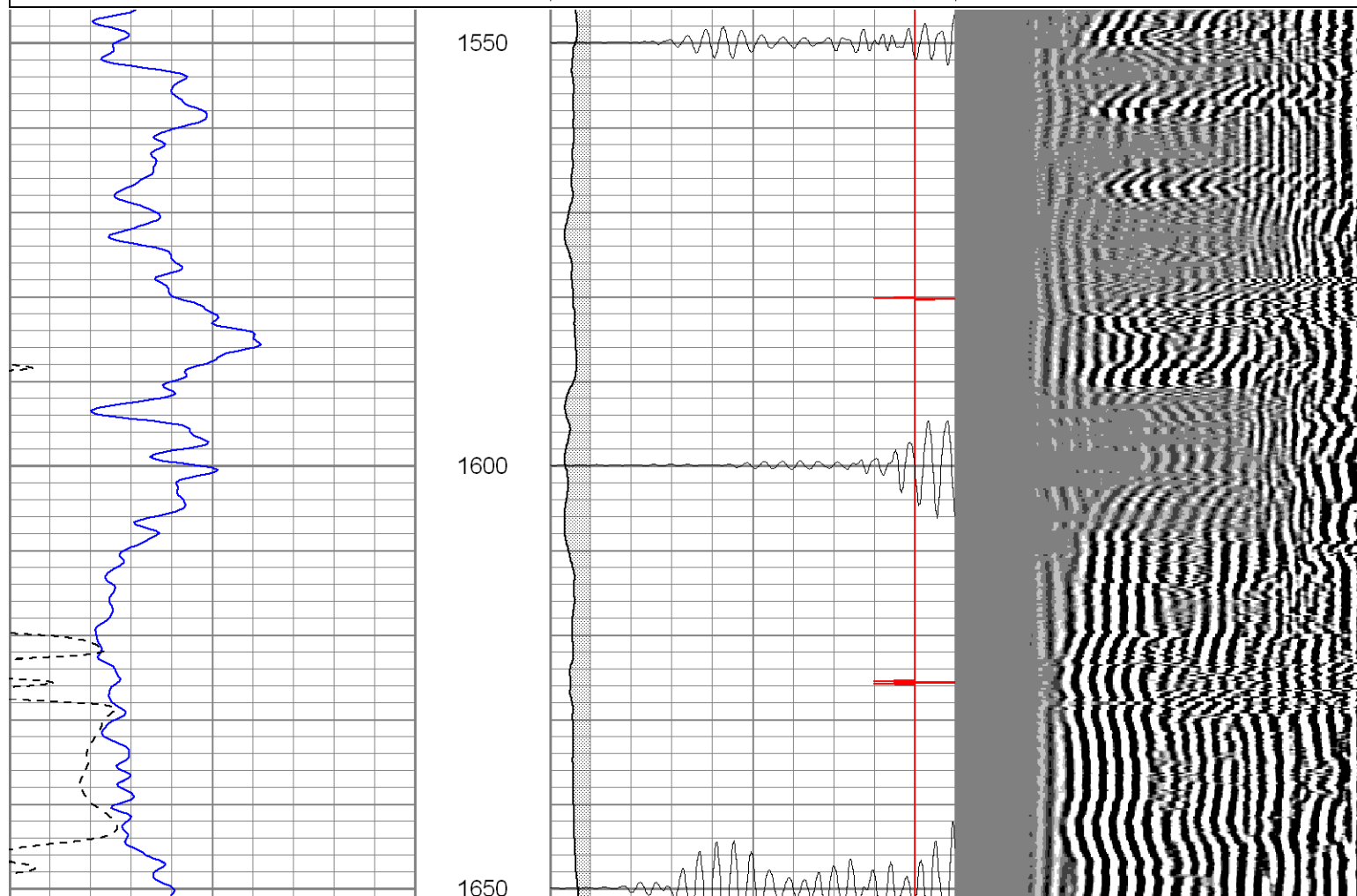
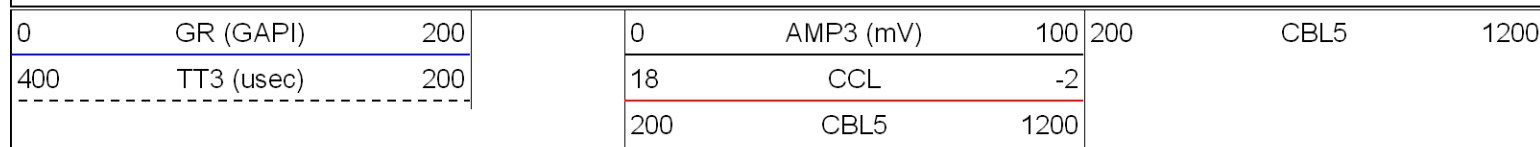


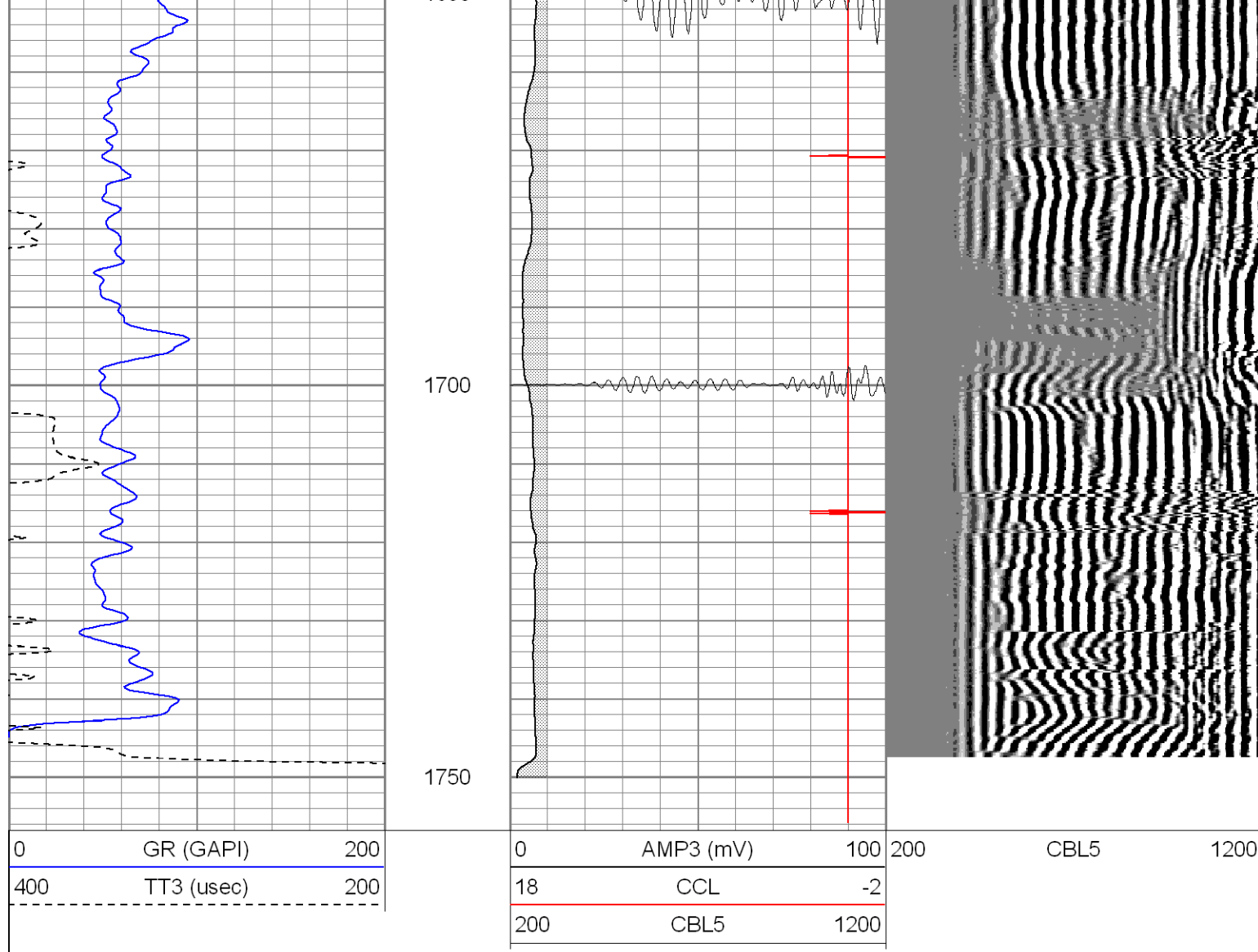
SUPERIOR

Black Lick, Pa.
Mercer, Pa.
Wooster, Oh.
Cleveland, Ok.
Trinidad, Co.

Repeat Section 0 PSI

Database File: ne25-08b4308.db
Dataset Pathname: pass1
Presentation Format: cblrt
Dataset Creation: Thu Apr 03 09:39:01 2008 by Log Open-Cased 071220
Charted by: Depth in Feet scaled 1:240





Calibration Report

Database File: ne25-08b4308.db
 Dataset Pathname: pass1
 Dataset Creation: Thu Apr 03 09:39:01 2008 by Log Open-Cased 071220

Cement Bond Log Calibration Report

Serial Number:	Titan5		
Tool Model:	T5		
Performed:	Thu Apr 03 09:19:40 2008		
Depth:	189.22	ft	
Casing Diameter:	5.5	in	
	3' Spacing	5' Spacing	
Signal Zero:	0	0	mV
Calibrated Amplitude:	85	85	mV
Reading at Signal Zero:	-0.04	0.0081543	V
Reading in Free Pipe:	1.6	2.45	V
Gain:	51.8293	34.8097	
Offset:	2.07317	-0.283849	

Gamma Ray Calibration Report

Serial Number:	Titan5
Tool Model:	T2
Performed:	Thu Apr 03 09:19:40 2008

Performed: Thu Apr 03 09:19:49 2008

Calibrator Value: 1.0 GAPI

Background Reading: 0.0 cps

Calibrator Reading: 1.0 cps

Sensitivity: 0.9000 GAPI/cps