



SUPERIOR
Black Lick, Pa.
Mercer, Pa.
Wooster, Oh.
Cleveland, Ok.
Trinidad, Co.

DUAL INDUCTION LOG

Company XTO Energy Inc.
Well New Elk 25-08
Field Purgatoire River
County Las Animas State Colorado

Location: API # : 05 071 09496 00

2103' FNL & 737' FEL

SEC 25 TWP 33S RGE 68W

Permanent Datum Ground Level Elevation 7347'
Log Measured From Ground Level
Drilling Measured From Ground Level

Other Services
CDL
NEUTRON
Elevation
K.B. -----
D.F. -----
G.L. 7347'

Date 3-30-08

Run Number One

Depth Driller 1840'

Depth Logger 1842'

Bottom Logged Interval 1840'

Top Log Interval Surface Casing

Casing Driller 8 5/8" @ 446'

Casing Logger 452'

Bit Size 7 7/8"

Type Fluid in Hole Water

Density / Viscosity ///

pH / Fluid Loss ///

Source of Sample ///

Rm @ Meas. Temp ///

Rmf @ Meas. Temp ///

Rmc @ Meas. Temp ///

Source of Rmf / Rmc ///

Rm @ BHT ///

Time Circulation Stopped 7:30 A.M.

Time Logger on Bottom 9:56 A.M.

Maximum Recorded Temperature 106 DEG F

Equipment Number T697

Location Trinidad

Recorded By J. Cappellucci

Witnessed By Mr. Dalton King

<<< Fold Here >>>

All interpretations are opinions based on inferences from electrical or other measurements and we cannot and do not guarantee the accuracy or correctness of any interpretation, and we shall not, except in the case of gross or willful negligence on our part, be liable or responsible for any loss, costs, damages, or expenses incurred or sustained by anyone resulting from any interpretation made by any of our officers, agents or employees. These interpretations are also subject to our general terms and conditions set out in our current Price Schedule.

Comments

Well Directions:

Second Bosque Entrance, at Y stay right at Apache Canyon,
go past Windmill, through Golden Eagle 30-03, next drive through
location is NE 25-08.

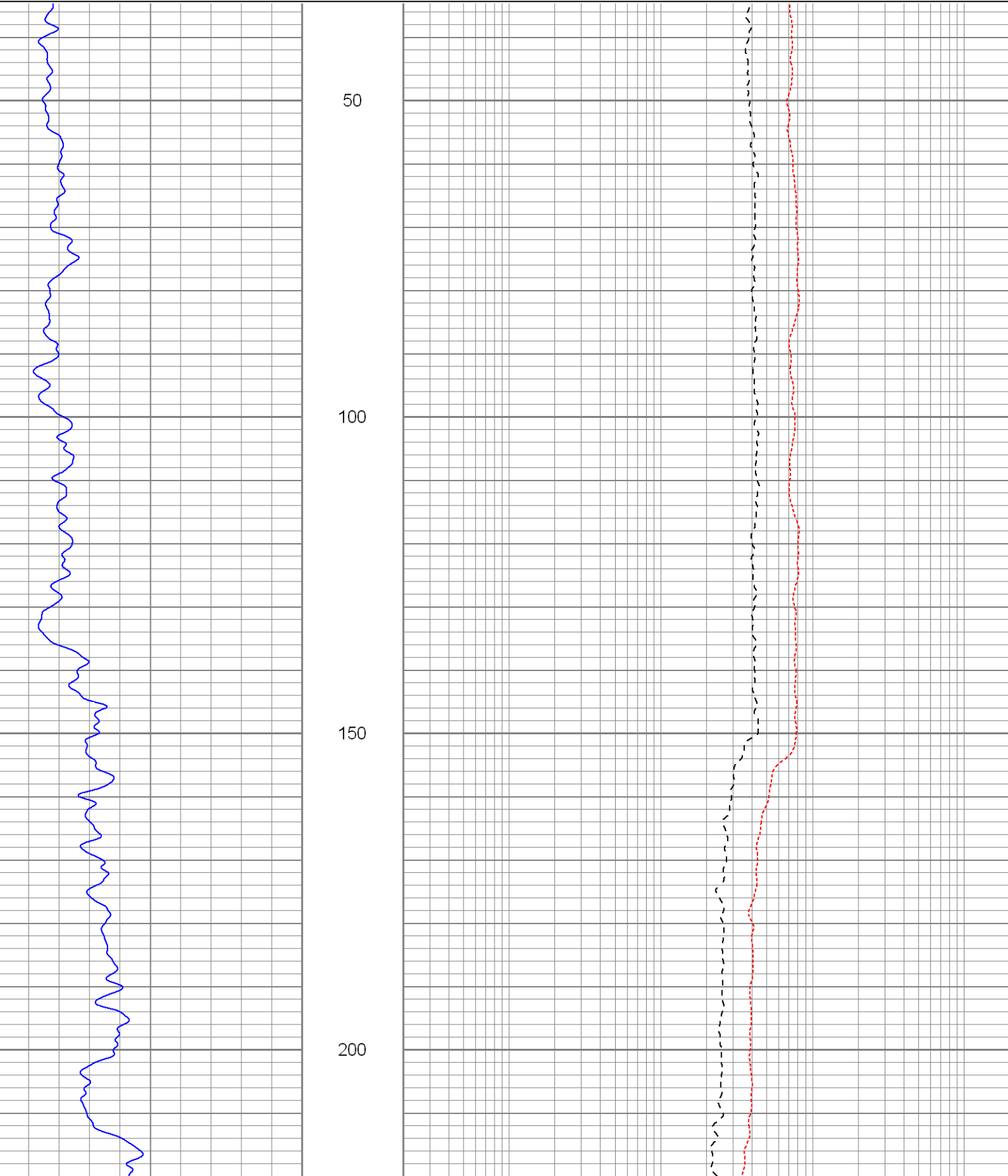


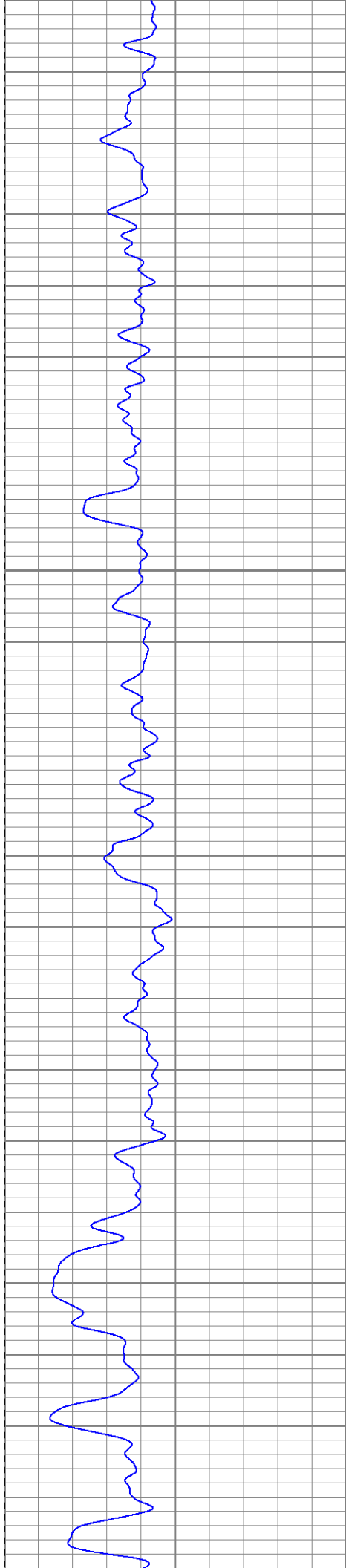
SUPERIOR
Black Lick, Pa.
Mercer, Pa.
Wooster, Oh.
Cleveland, Ok.
Trinidad, Co.

Main Pass

Database File: xtone2508.db
Dataset Pathname: pass2.1
Presentation Format: dil
Dataset Creation: Sun Mar 30 11:16:15 2008 by Calc Open-Cased 070814
Charted by: Depth in Feet scaled 1:240

0	GR (GAPI)	200	0.2	RILM (Ohm-m)	2000
-200	SP (mV)	0	0.2	RILD (Ohm-m)	2000
			0.2	RLL3 (Ohm-m)	2000



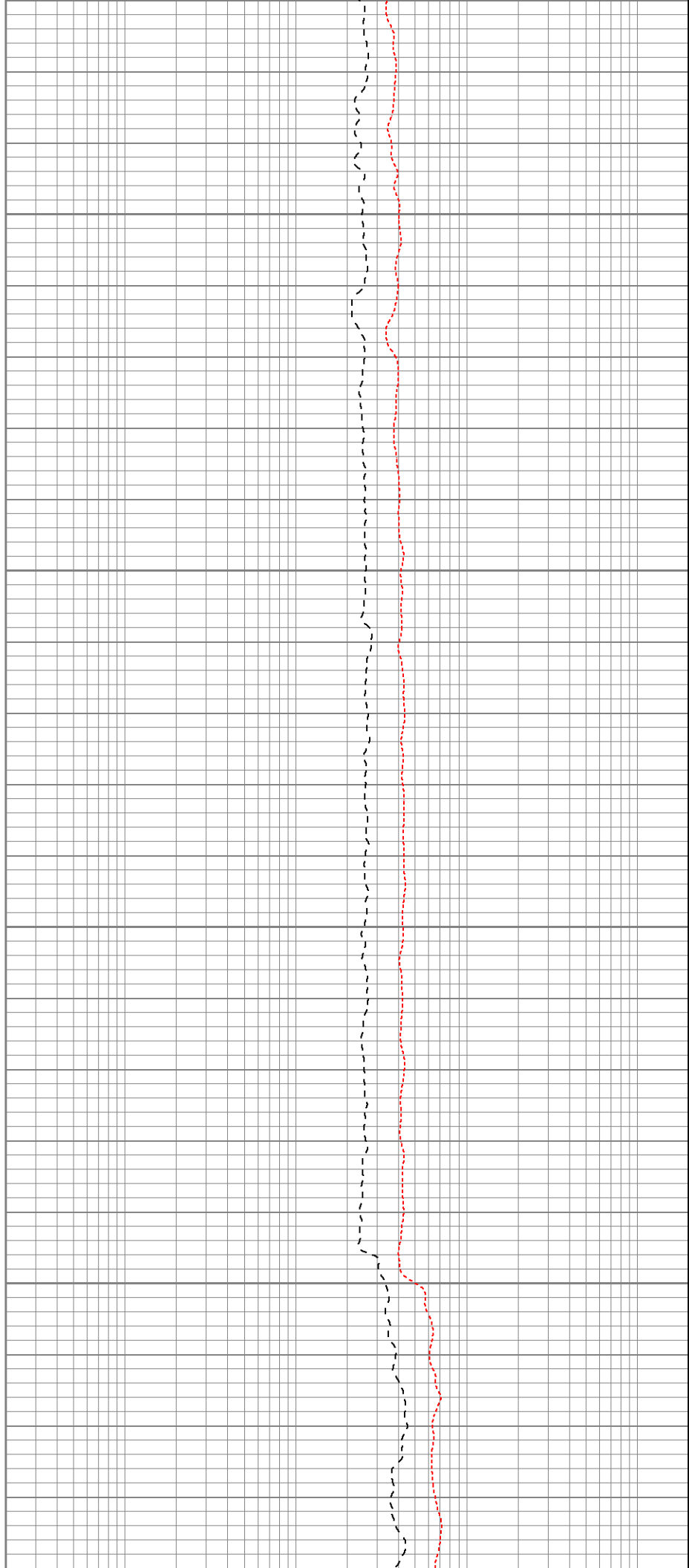


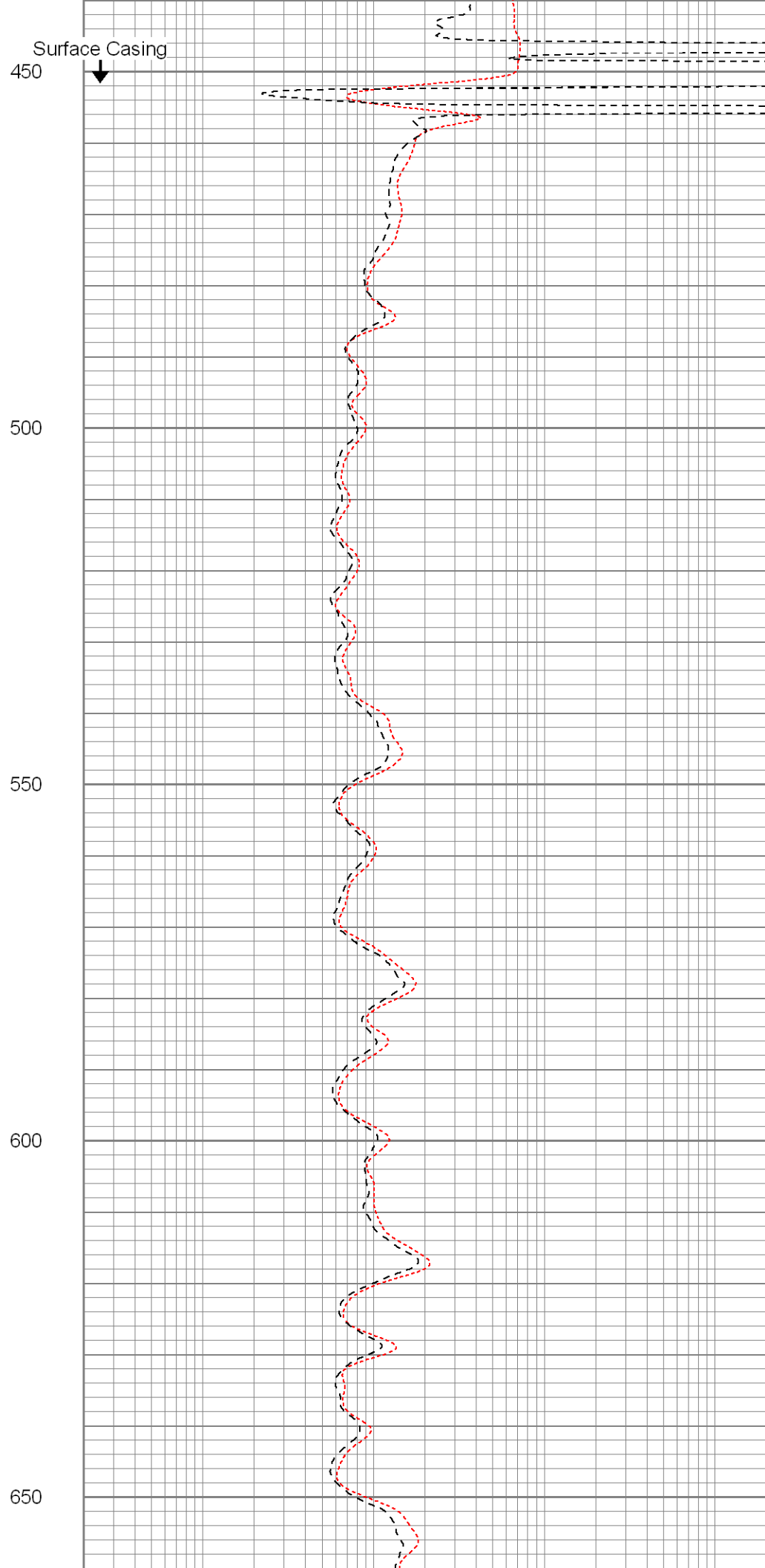
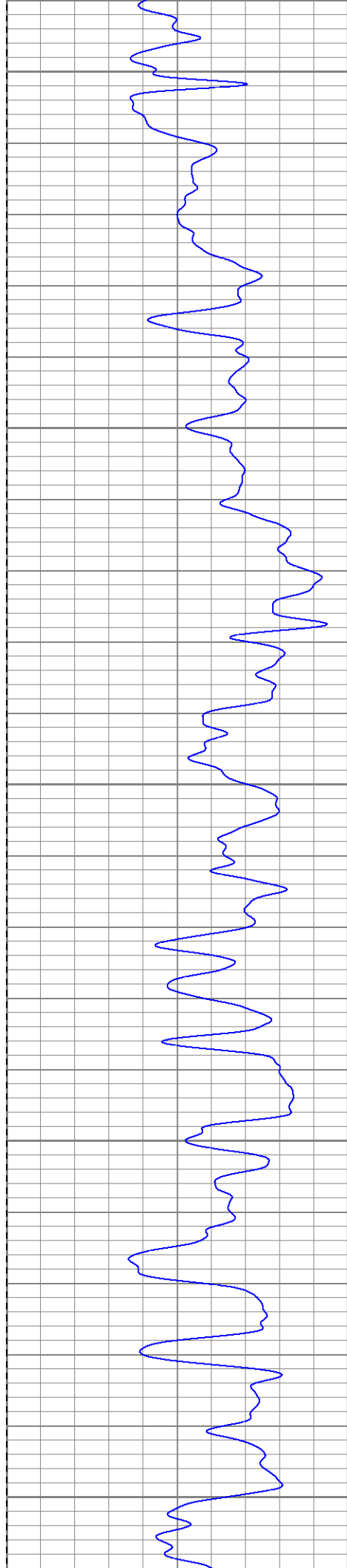
250

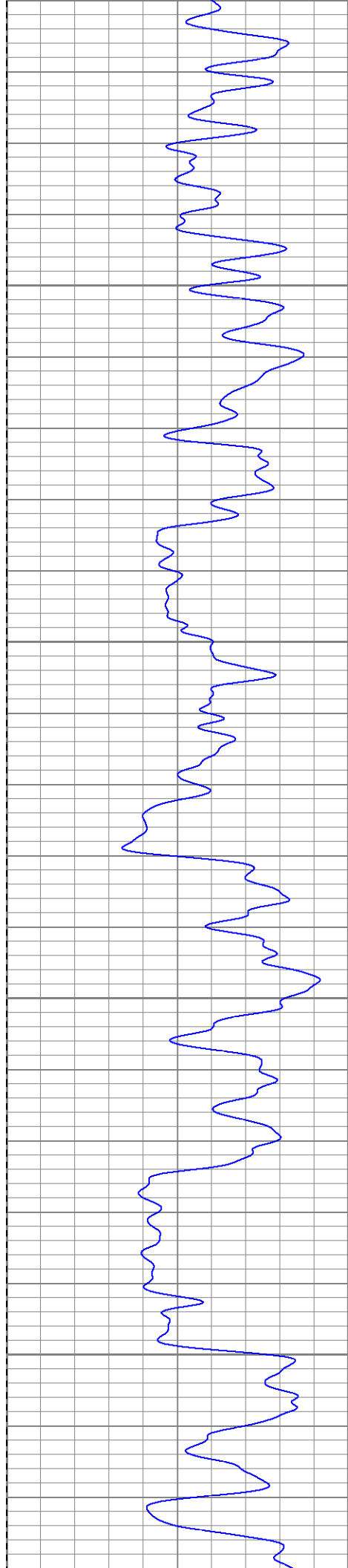
300

350

400





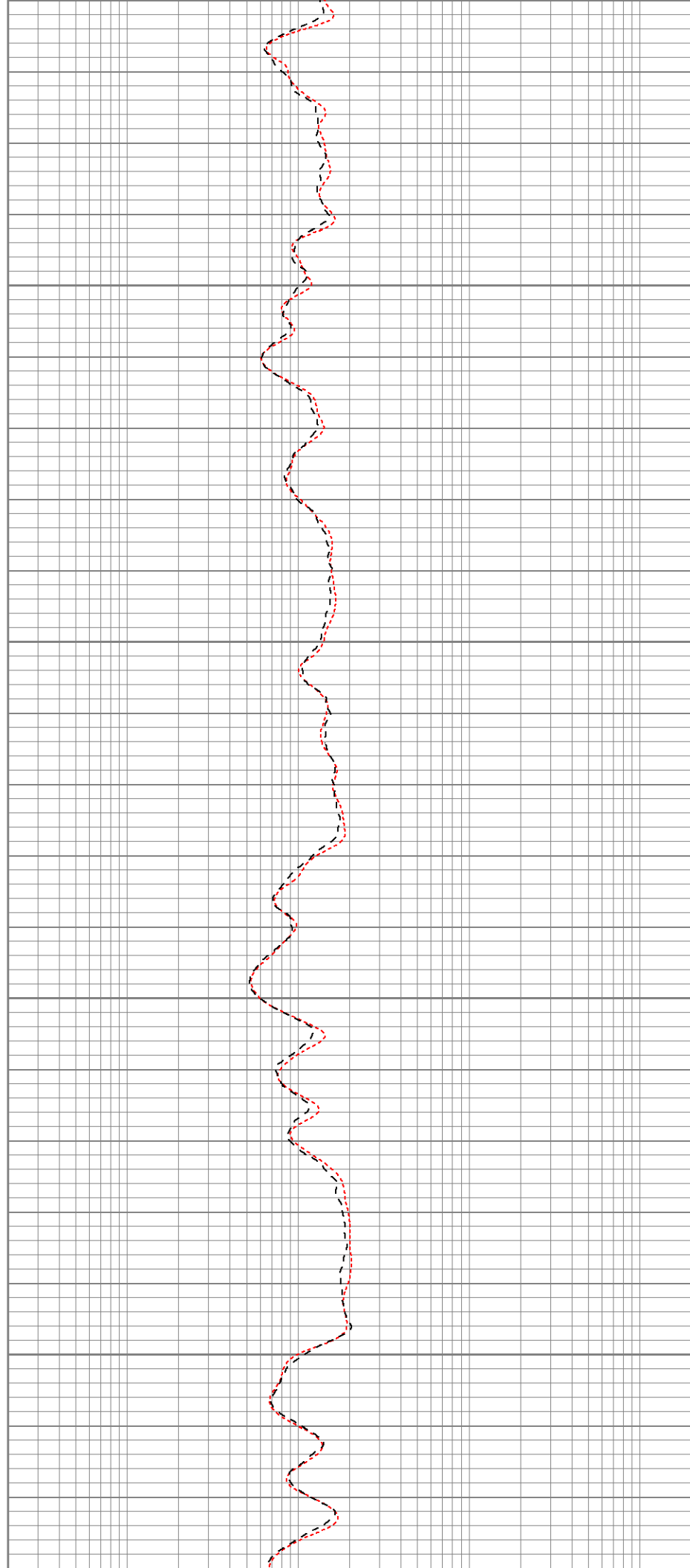


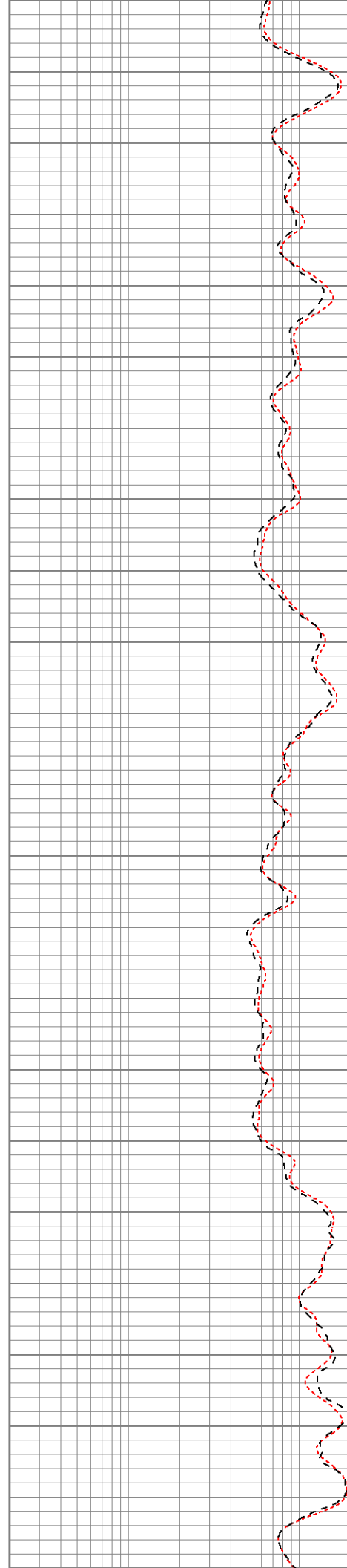
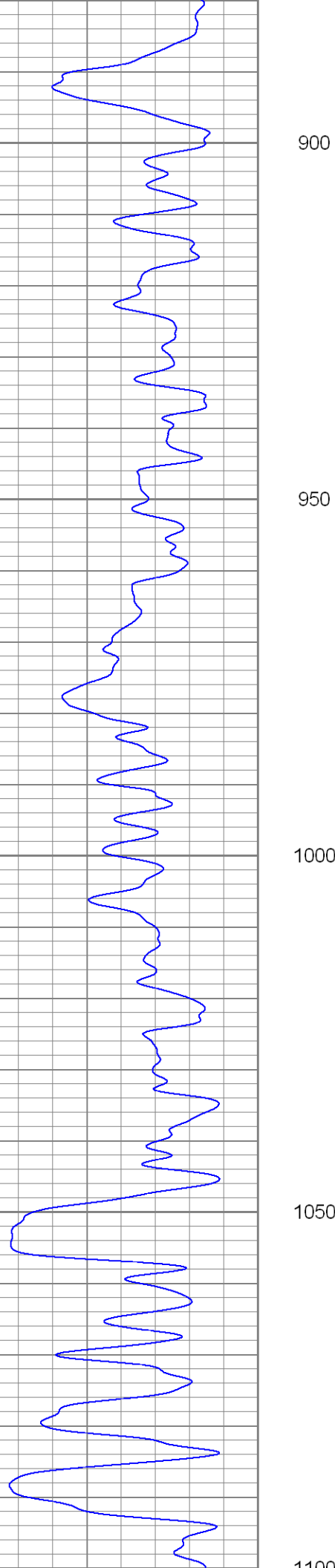
700

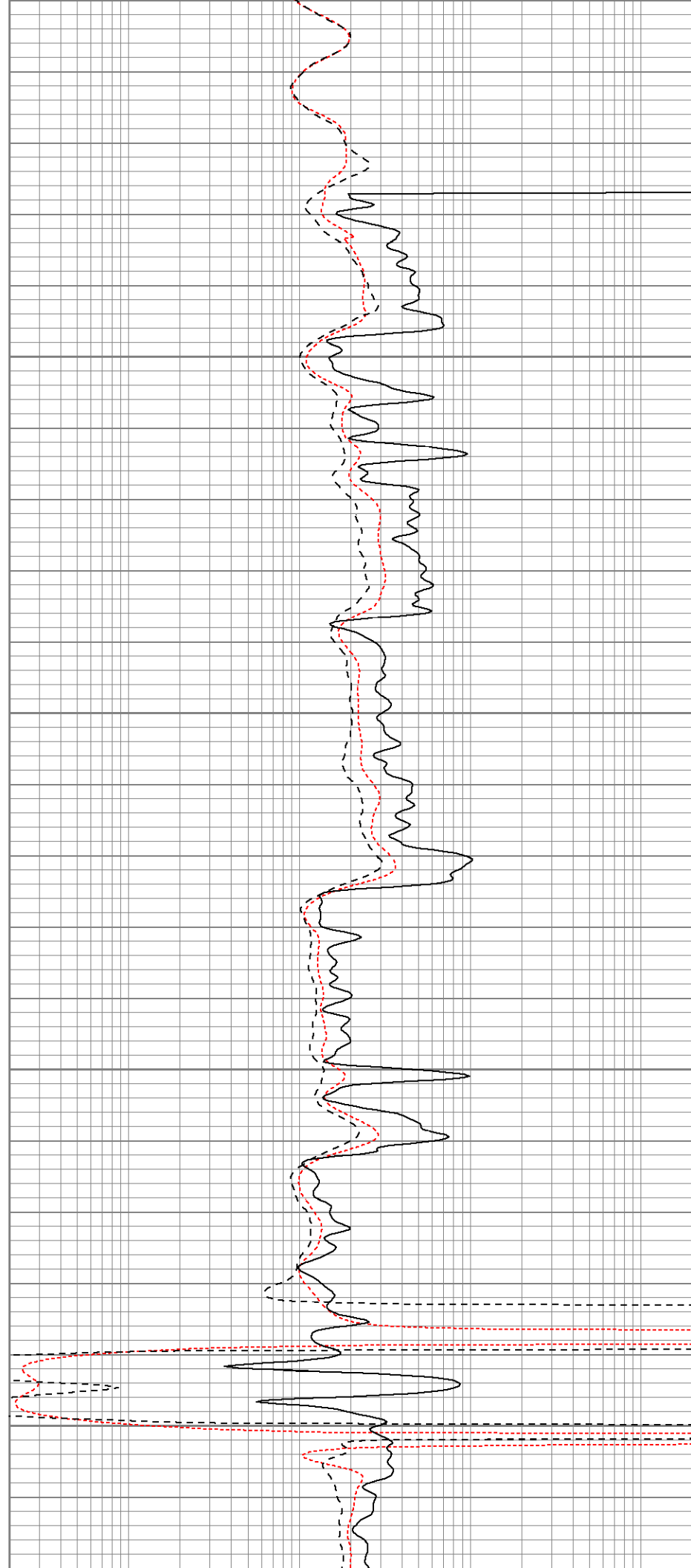
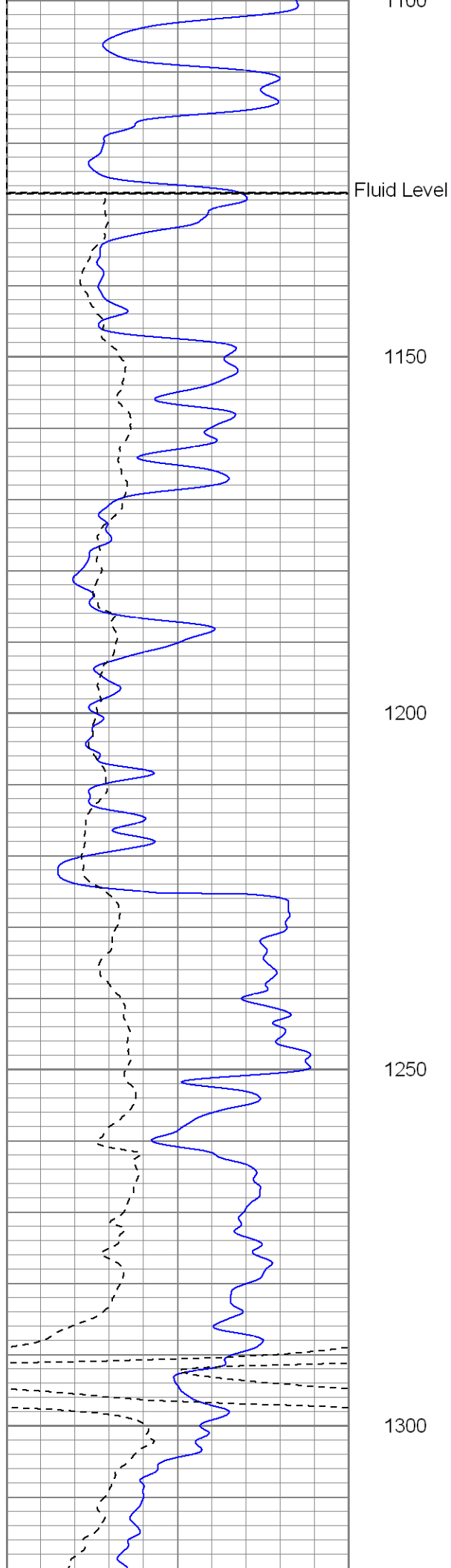
750

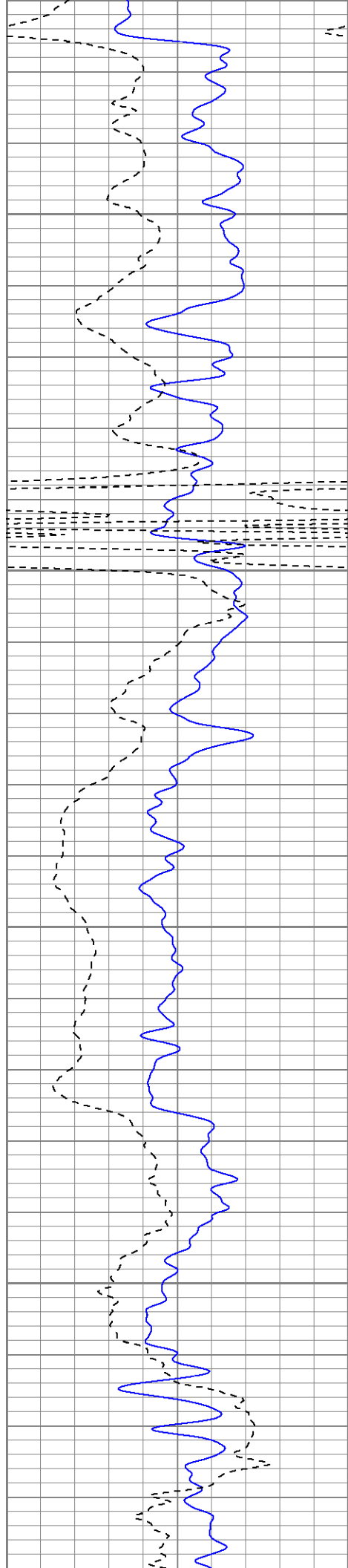
800

850







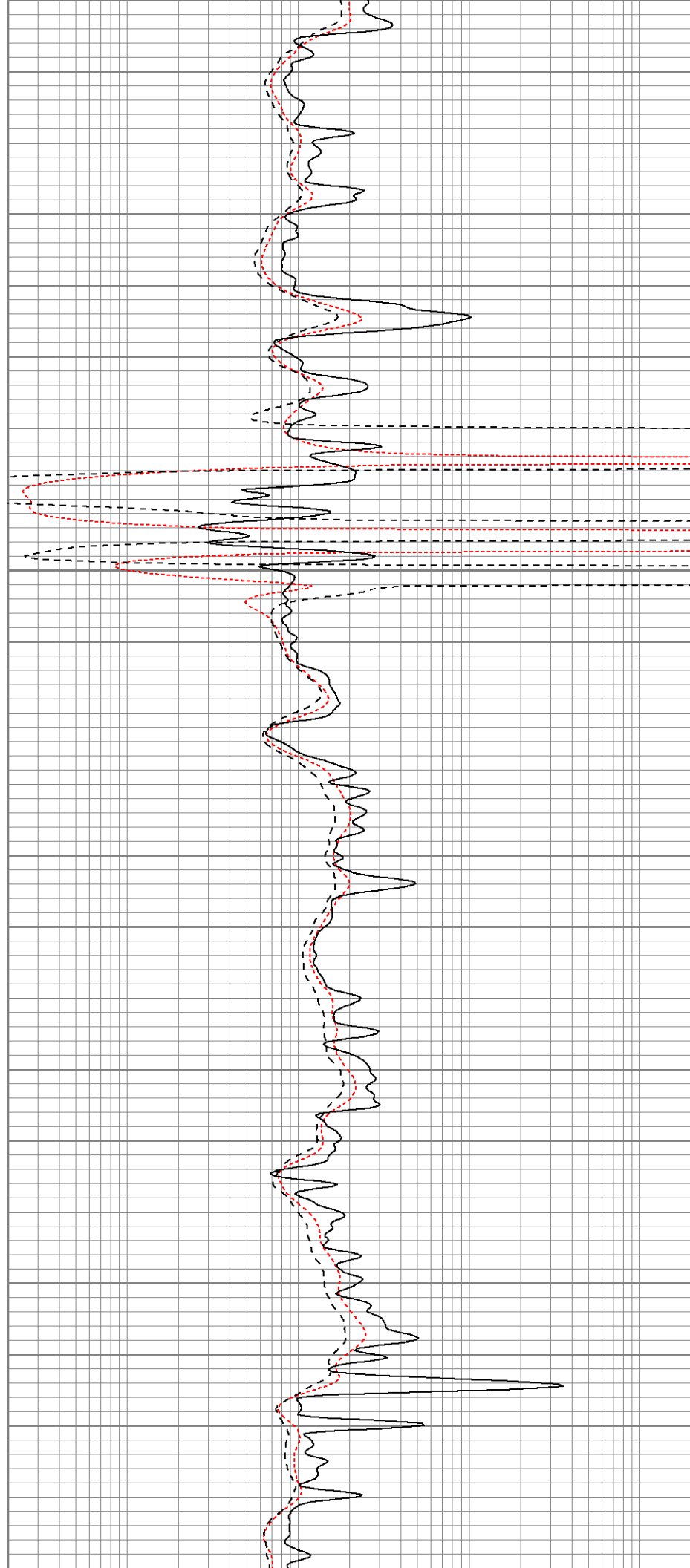


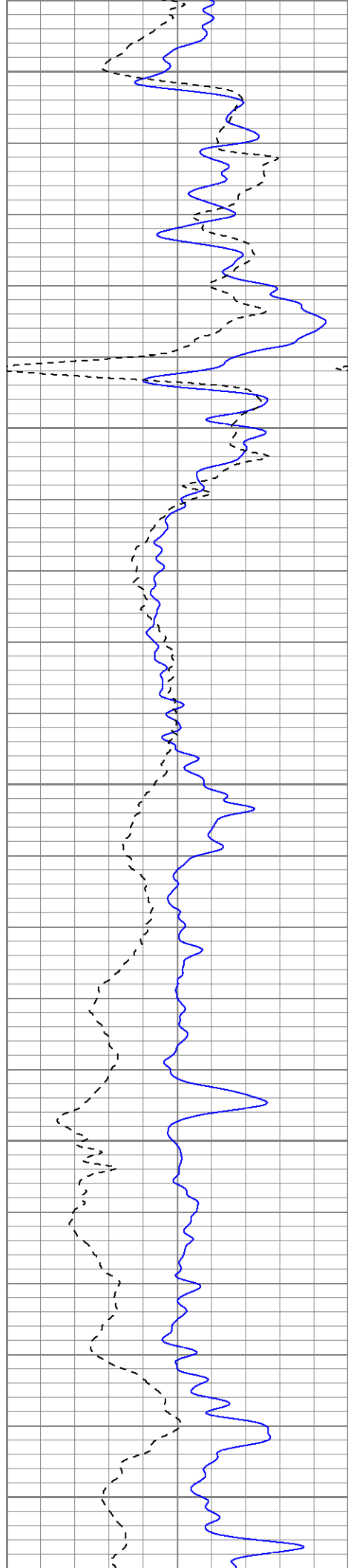
1350

1400

1450

1500





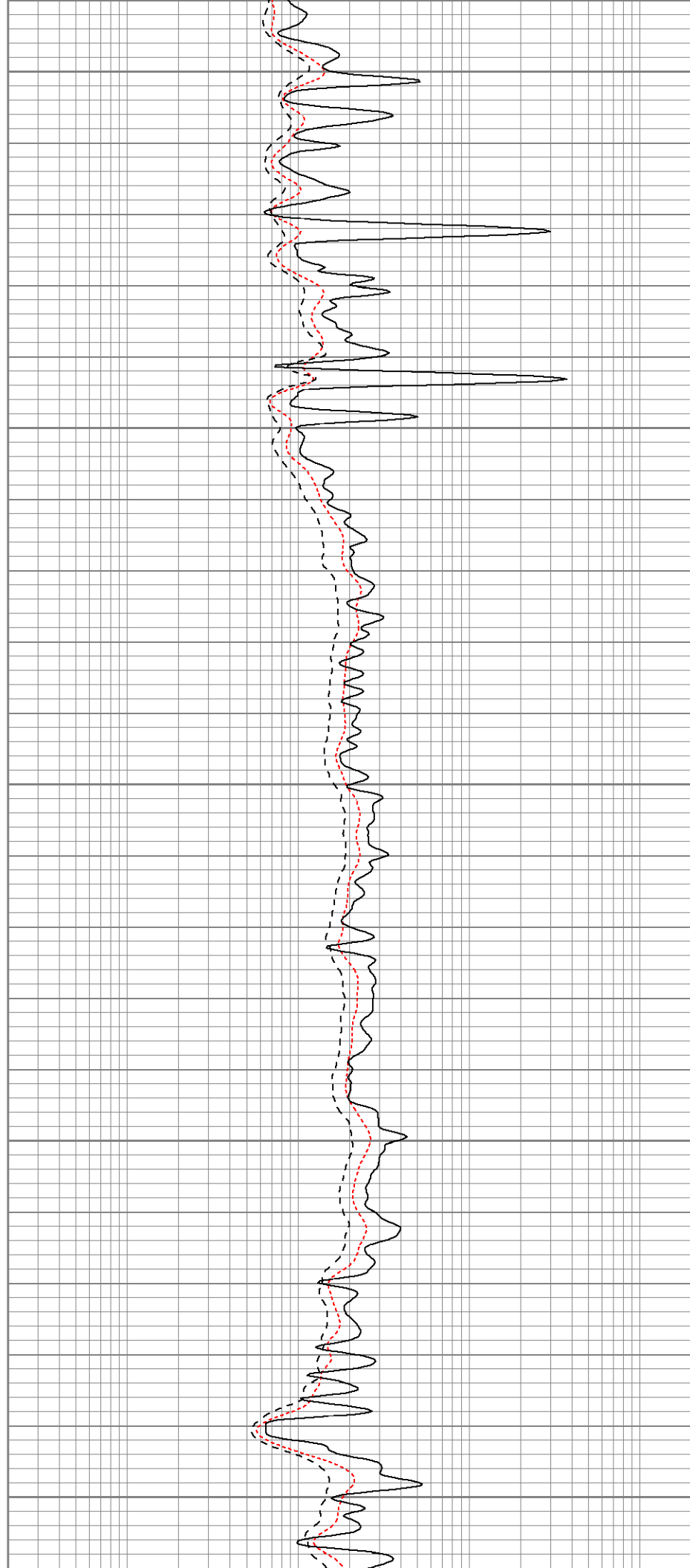
1550

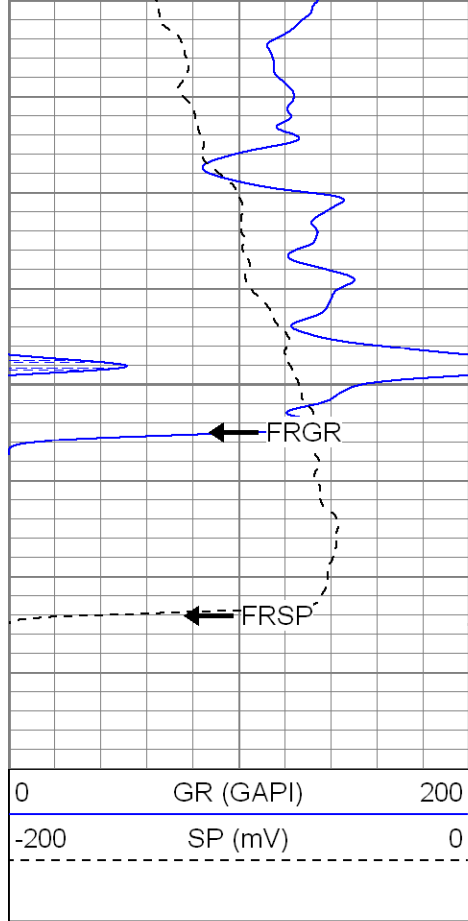
1600

1650

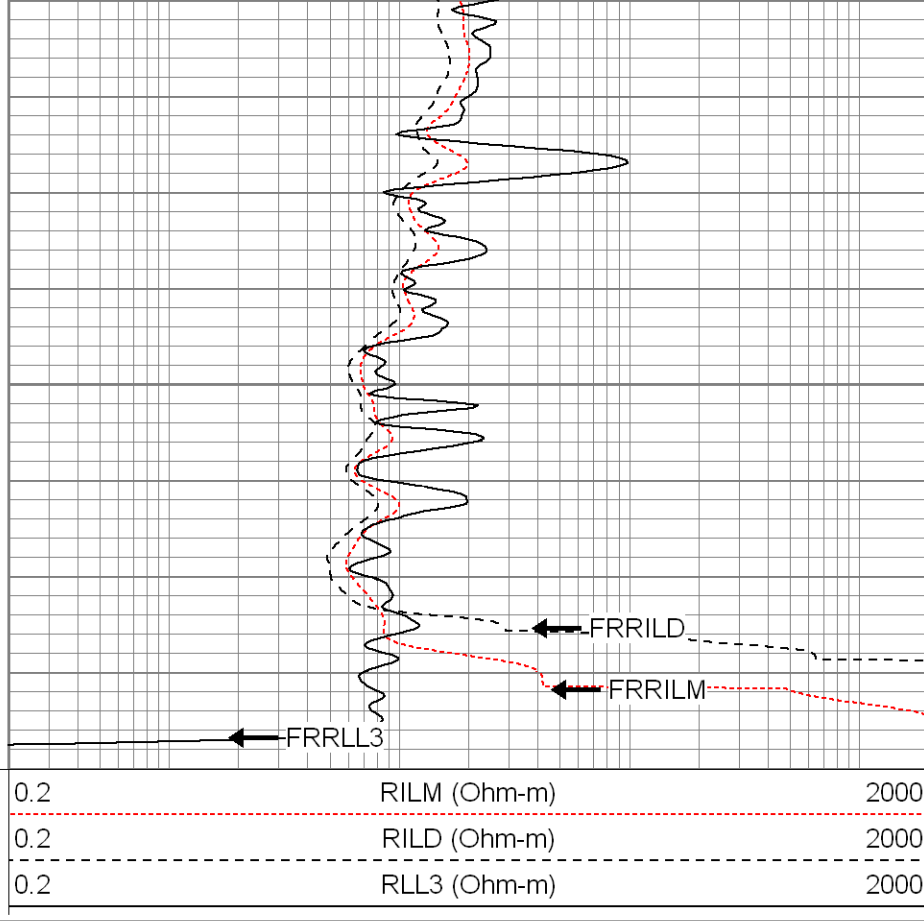
1700

1750





1800



SUPERIOR

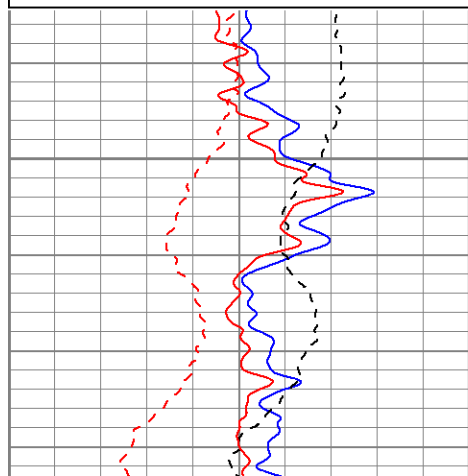
Black Lick, Pa.
Mercer, Pa.
Wooster, Oh.
Cleveland, Ok.
Trinidad, Co.

Repeat Pass

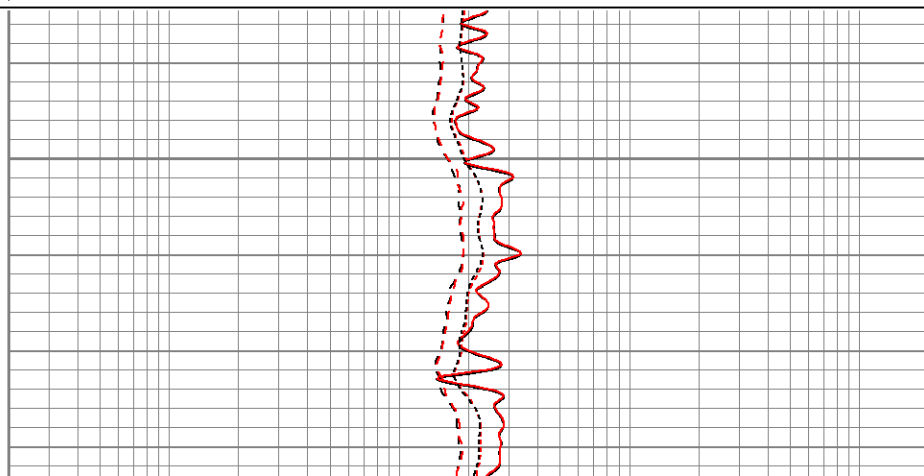
Database File: xtone2508.db
Dataset Pathname: pass1.1
Presentation Format: dil
Dataset Creation: Sun Mar 30 10:22:10 2008 by Calc Open-Cased 070814
Charted by: Depth in Feet scaled 1:240

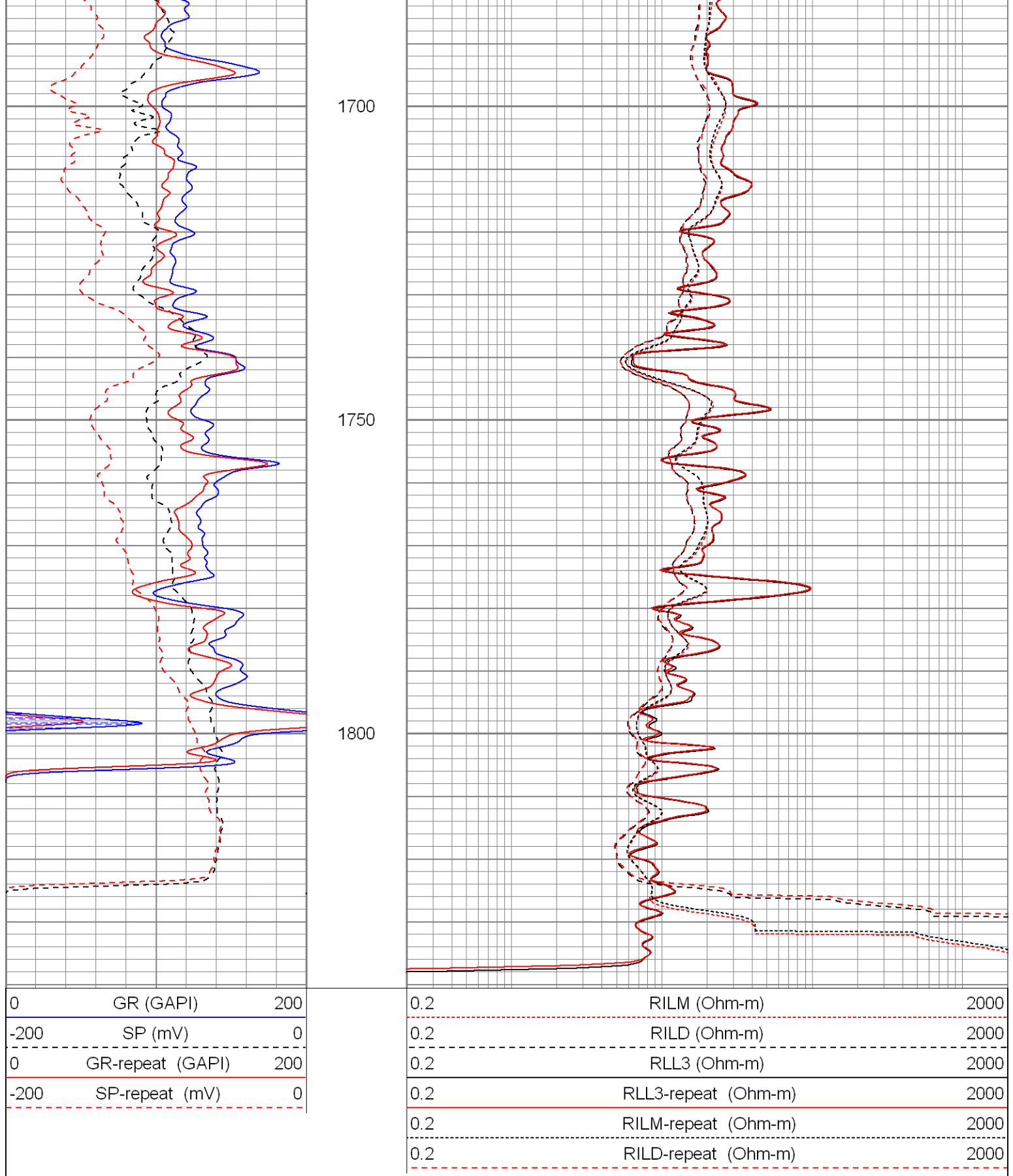
0	GR (GAPI)	200
-200	SP (mV)	0
0	GR-repeat (GAPI)	200
-200	SP-repeat (mV)	0

0.2	RILM (Ohm-m)	2000
0.2	RILD (Ohm-m)	2000
0.2	RLL3 (Ohm-m)	2000
0.2	RLL3-repeat (Ohm-m)	2000
0.2	RILM-repeat (Ohm-m)	2000
0.2	RILD-repeat (Ohm-m)	2000



1650





Calibration Report

Database File: xtone2508.db
Dataset Pathname: pass1
Dataset Creation: Sun Mar 30 09:58:44 2008 by Log Open-Cased 070814

Dual Induction Calibration Report

Serial-Model:

20017-P

Surface Calibration

Readings				References			Results	
Loop:	Air	Loop		Air	Loop		m	b
Deep	-0.002	0.657	V	0.000	500.000	mmho-m	758.526	1.560
Medium	-0.003	0.782	V	0.000	550.000	mmho-m	700.351	2.142
Internal:	Zero	Cal		Zero	Cal		m	b
Deep	-0.002	0.657	V	0.000	500.000	mmho-m	757.929	1.726
Medium	-0.003	0.780	V	0.000	500.000	mmho-m	638.777	2.035

Downhole Calibration

Readings				References			Results	
Internal:	Zero	Cal		Zero	Cal		m	b
Deep	-0.042	500.120	mmho-m	-0.167	500.227	mmho-m	1.000	-0.125
Medium	-0.239	549.337	mmho-m	-0.090	548.106	mmho-m	0.997	0.149
Shallow	0.047	4.993	V	10.000	1000.000	Ohm-m	124.000	2.000

Compensated Density Calibration Report

Serial-Model: 2118-poilex
Source / Verifier: /
Master Calibration Performed: Mon Mar 17 09:00:21 2008

Master Calibration

	Density			Far Detector	Near Detector	
Magnesium	1.710	g/cc		689.13	662.28	cps
Aluminum	2.590	g/cc		156.84	466.09	cps
Spine Angle = 76.65				Density/Spine Ratio = 0.578		
	Size			Reading		
Small Ring	8.50	in		4.33	V	
Large Ring	14.00	in		8.24	V	

Gamma Ray Calibration Report

Serial Number: 2001
Tool Model: OH
Performed: Wed Mar 05 01:30:07 2008

Calibrator Value: 1.0 GAPI

Background Reading: 0.0 cps
Calibrator Reading: 1.0 cps

Sensitivity: 0.2500 GAPI/cps

Neutron Calibration Report

Serial Number: 5145
Tool Model: G
Performed: Tue Mar 04 08:46:08 2008

Calibrator Value:	1200	NAPI
Calibrator Reading:	1700	cps
Sensitivity:	0.705882	NAPI/cps

Sensor	Offset (ft)	Schematic	Description	Len (ft)	OD (in)	Wt (lb)	
NEU	40.47		None	0.75	1.50	5.00	
			NEU-G (5145) Gearhart Epithermal	5.65	3.50	85.00	
GR	34.63		GR-OH (2001) 2001	3.56	3.25	40.00	
			CDL-poilex (2118)	8.83	4.00	275.00	
LSD	26.46						
DCAL	26.05						
SSD	25.88						
CILD	16.29						
SP	16.29						
CILM	12.54			DIL-P (20017) Pengo	24.63	4.00	300.00
RLL3	3.21						
Dataset: xtone2508.db: field/well/run1/pass1 Total Length: 43.42 ft Total Weight: 705.00 lb O.D. 4.00 in							