

COMPANY BILL BARRETT CORPORATION		WELL BRYNILDSON 23B-20-692		FIELD MAMM CREEK		COUNTY GARFIELD		STATE COLORADO	
PERM. DATUM Ground Level		ELEV. 5,669'		ELEV. :K.B. 5,686'		OTHER SERVICES:			
LOG MEASURED FROM K.B. 17 FT. ABOVE PERMANENT DATUM				D.F. 5,685'		JB/GR 3.75"			
DRILLING MEASURED FROM Kelly Bushing				G.L. 5,669'		@ 7,698'			
DATE		23-DEC-2008		API:		PND			
RUN NO.		ONE							
DEPTH DRILLER		7,500'							
DEPTH LOGGER		7,700'							
BTM. LOG INTERVAL		7,694'							
TOP LOG INTERVAL		2,800'							
OPEN HOLE SIZE		7.875"							
TYPE FLUID		Water Based							
DENS.		8.3		N/A					
MAX. REC. TEMP. ° F		N/A							
EST. CEMENT TOP		3,920'							
TIME WELL READY		ROA							
TIME LOGGER ON BTM.		SEE LOG							
EQUIP. NO.		14102							
LOCATION		GRAND JUNCTION							
RECORDED BY		ADAM MACPHERSON							
WITNESSED BY		GARY EITER							
BOREHOLE RECORD				TUBING RECORD					
RUN NO.	BIT	FROM	TO	SIZE	WGT.	FROM	TO		
CASING RECORD	SIZE	WT/FT	GRADE	TYPE JOINT	TOP	BOTTOM			
SURFACE STRING									
PROT. STRING									
PROD. STRING	4.500"	11.6			SURF	7500' ?			
LINER									
MARKER JT. @	5687-	5707	&	7354 -	7374				

All interpretations of log data are opinions based on inferences from electrical or other measurements. We do not guarantee the accuracy or correctness of any interpretation or recommendation and we shall not be liable or responsible for any loss, cost, damages or expenses incurred or sustained by anyone resulting from any interpretation or recommendation made by any of our employees or agents.

REMARKS	Rig: WTF CRANE # 15050	Service Order # 153113
LOG DEPTHS CORRECTED -2' TO WTF PND LOG DATED 23-DEC-2008		BHT N/A °F
LOGGED W/O PSI. @ SURFACE		

Prints: 4

YOUR CREW TODAY IS: JACOP EARICH, KEITH NEELY

THANK YOU FOR CHOOSING WEATHERFORD WIRELINE SRV. GRD.JUNCTION.CO. (970)263-8501

[illegible]

DEPTH SCALE: 5":100'

VERSION: 80214133R"

MAIN PASS

153113 CBLMAINF

FINISH DEPTH: 2798.1 Feet DIRECTION: UP DATE: 12/23/2008 TIME: 05:03 MODE: ORIGINAL

Collar Locator

-8000 Millivolts 880

Gamma Ray

0 API 150

TRAVEL TIME 3FT

310 Microseconds 210

Tension

0 2400

AMPLITUDE 3FT X5

0 Millivolts 20

AMPLITUDE 3FT

0 Millivolts 100

FREE PIPE GATE

200 Microseconds 1200

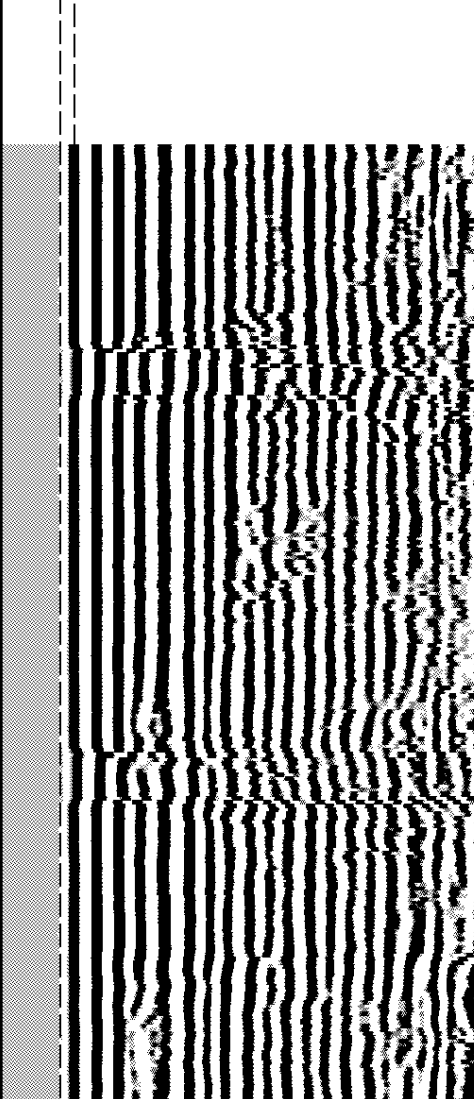
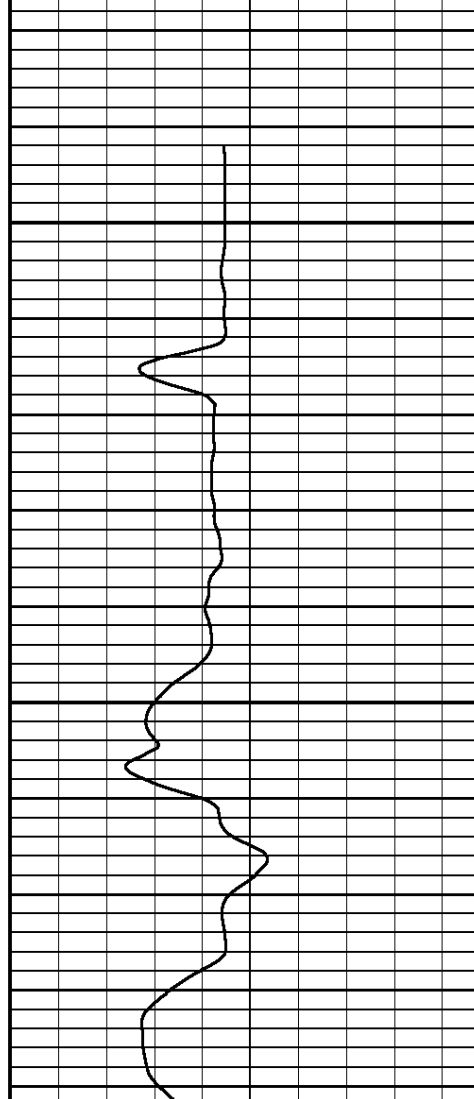
FREE PIPE GATE

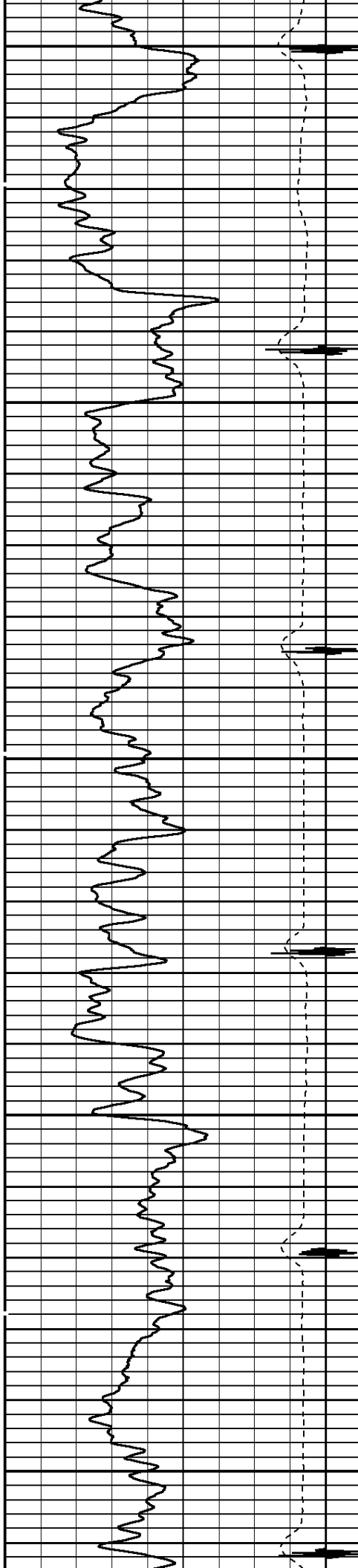
200 Microseconds 1200

VARIABLE DENSITY 5FT

200 Microseconds 1200

2800

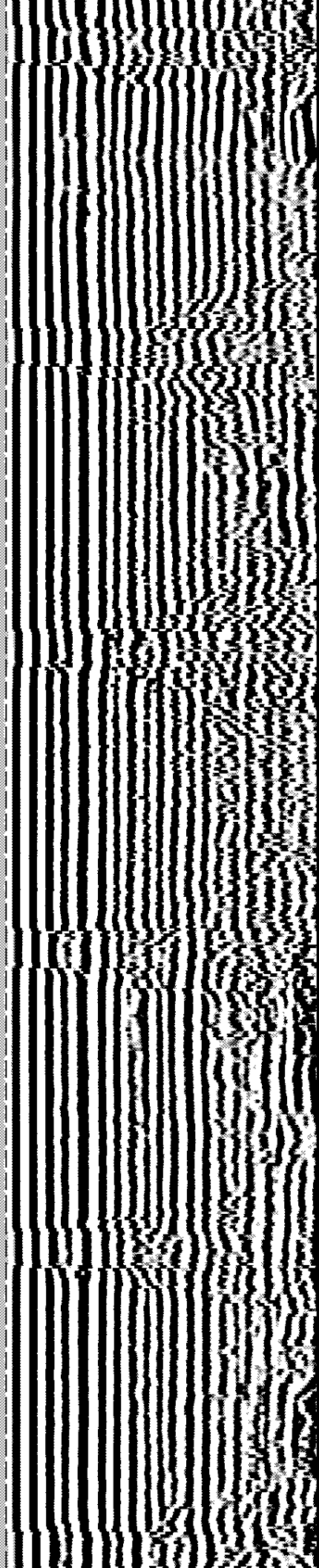
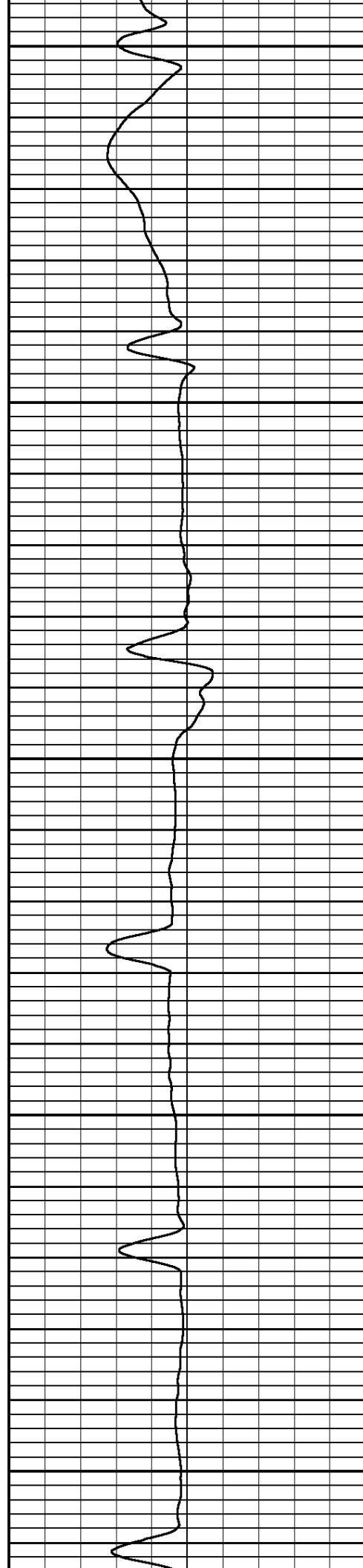


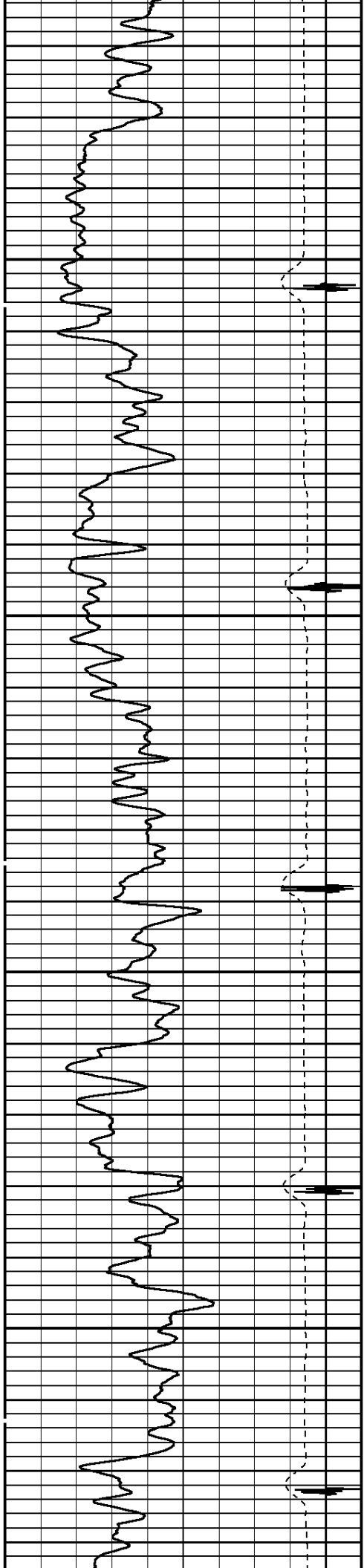


2900

3000

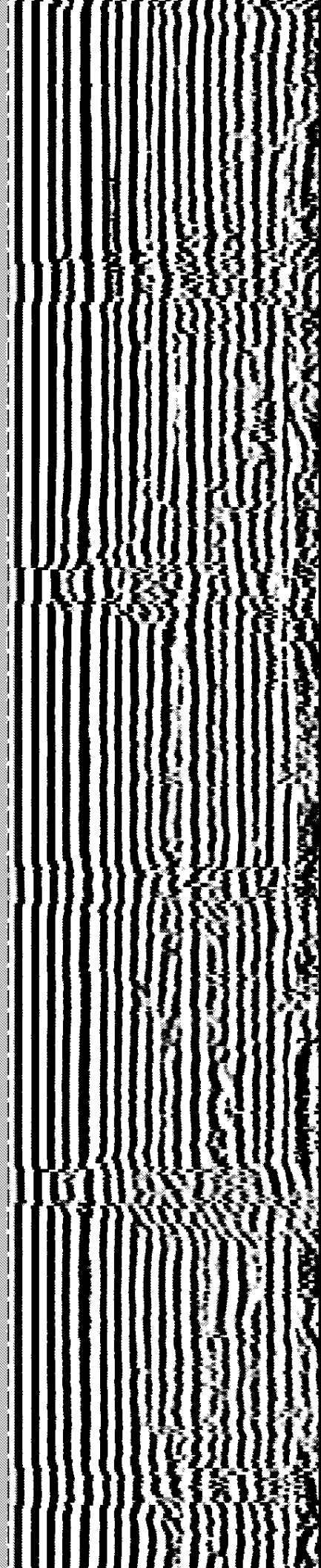
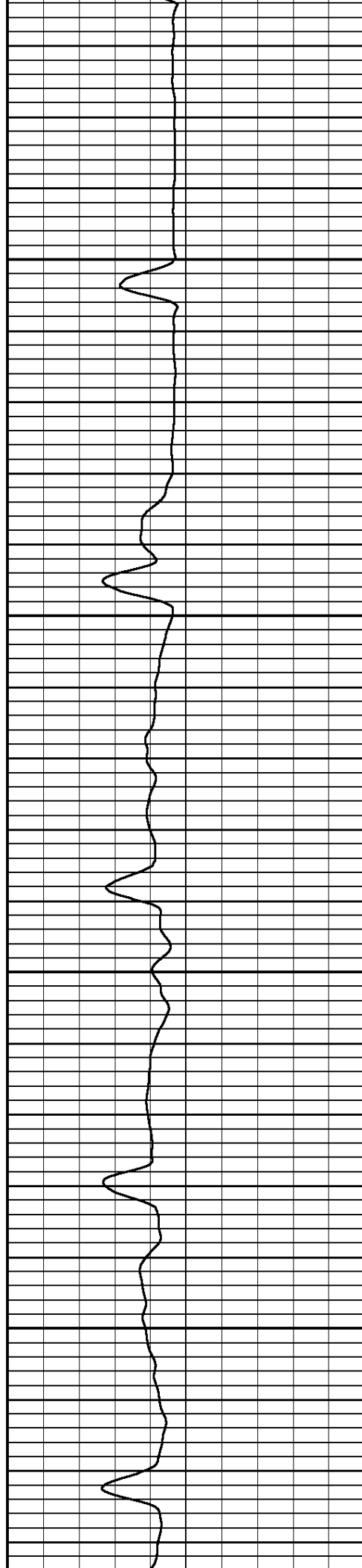
3100

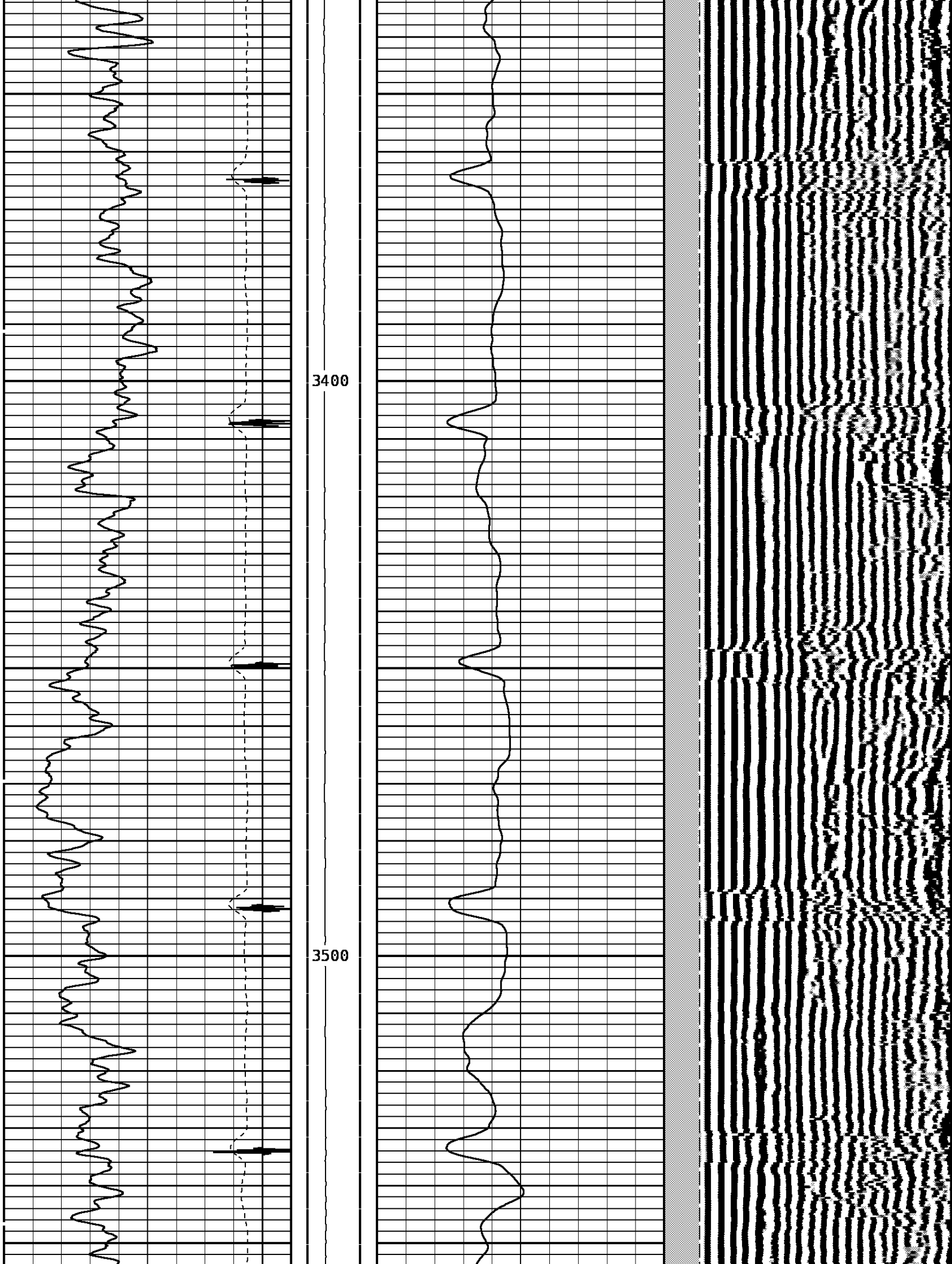


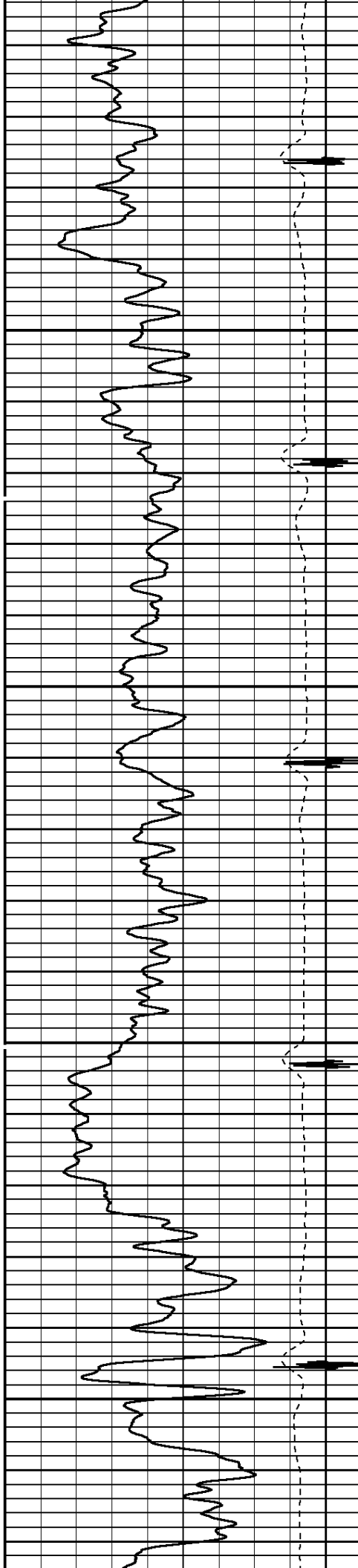


3200

3300

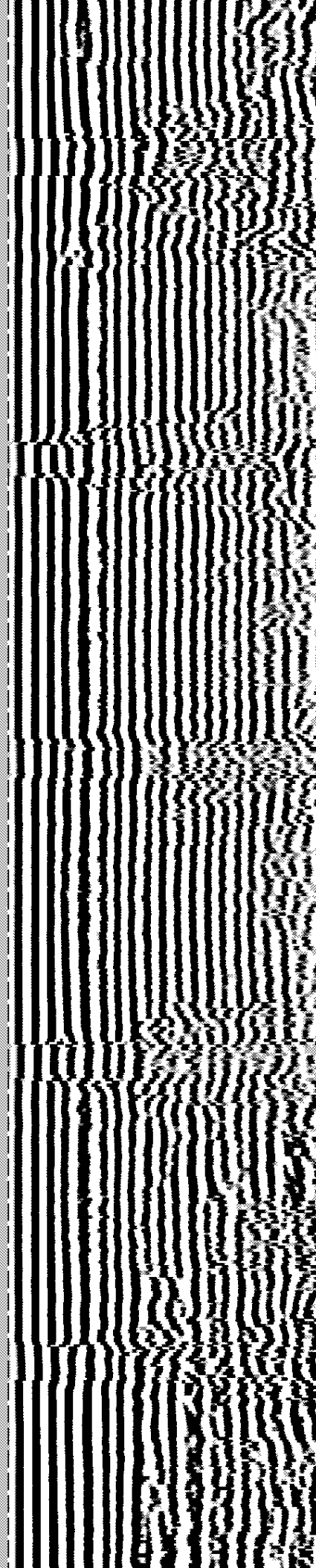
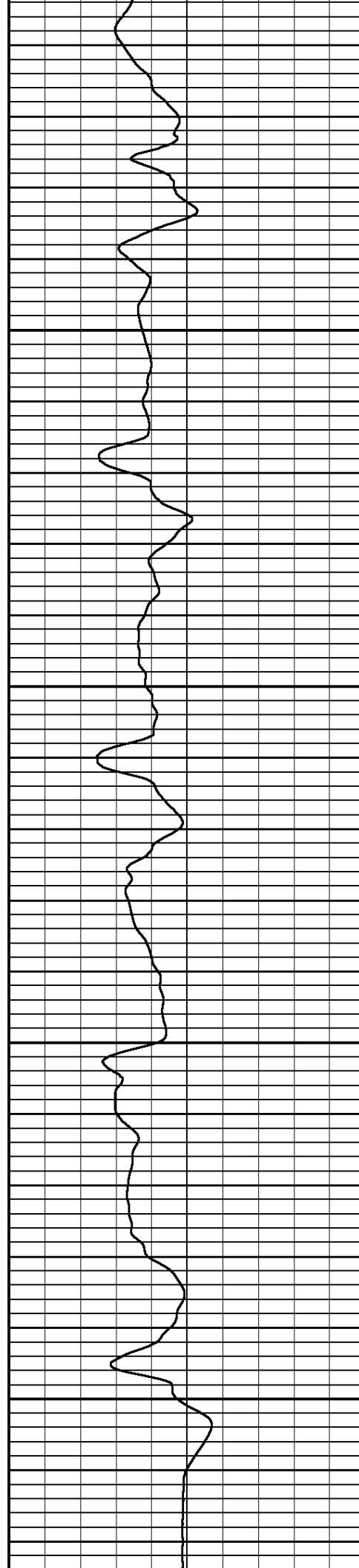


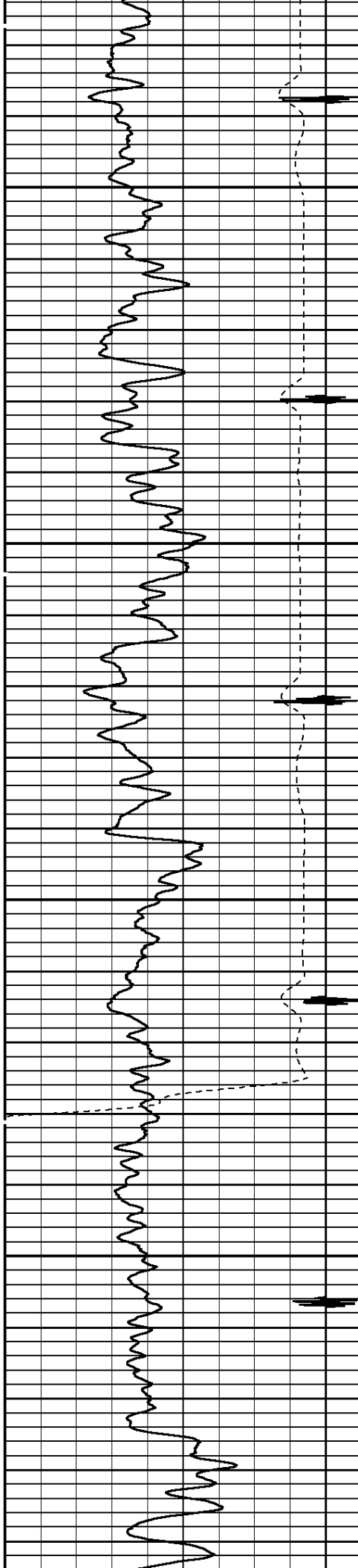




3600

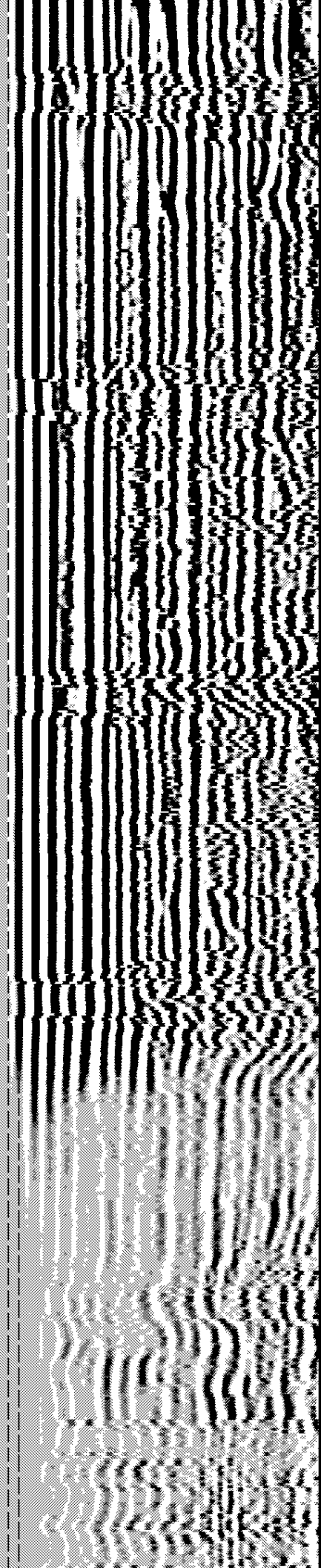
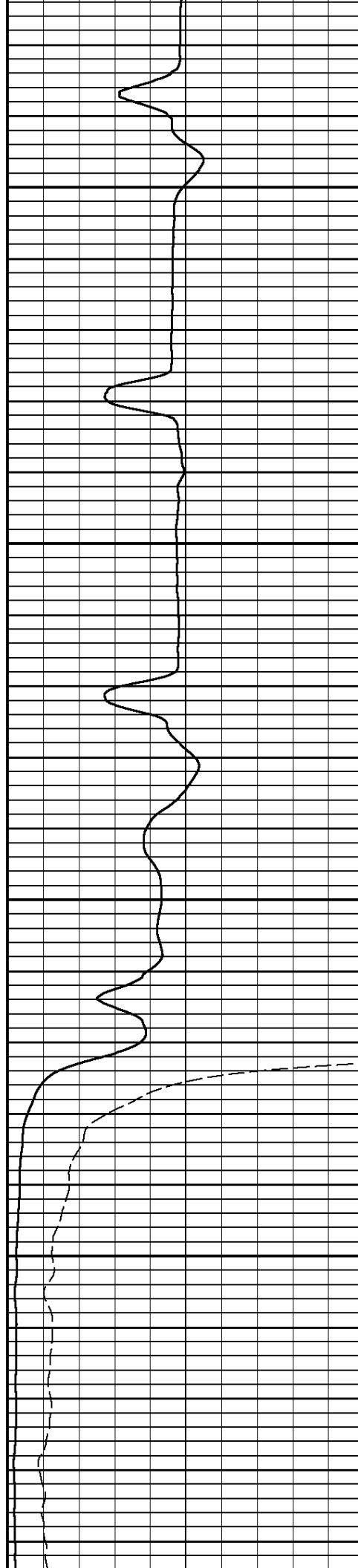
3700

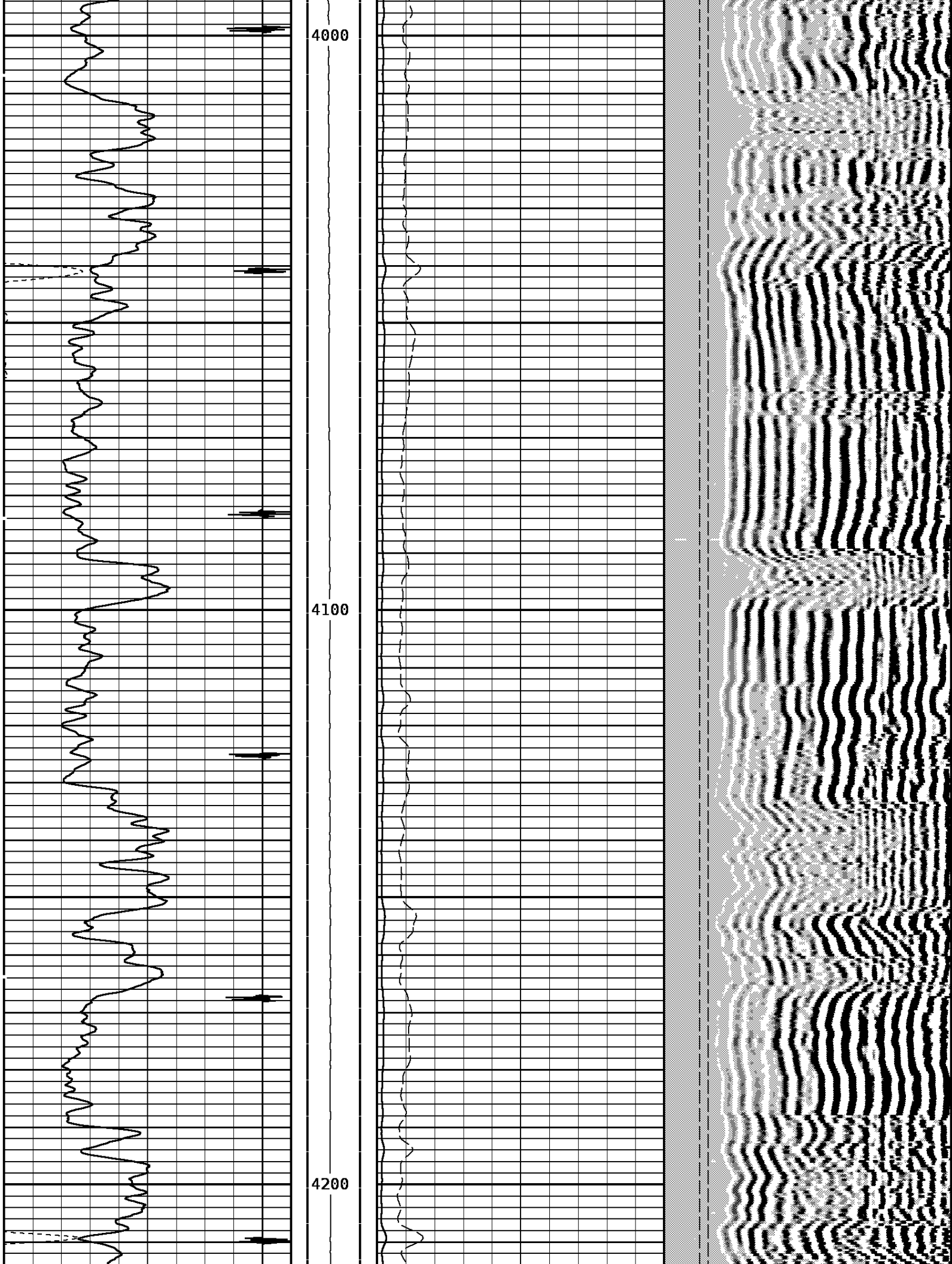


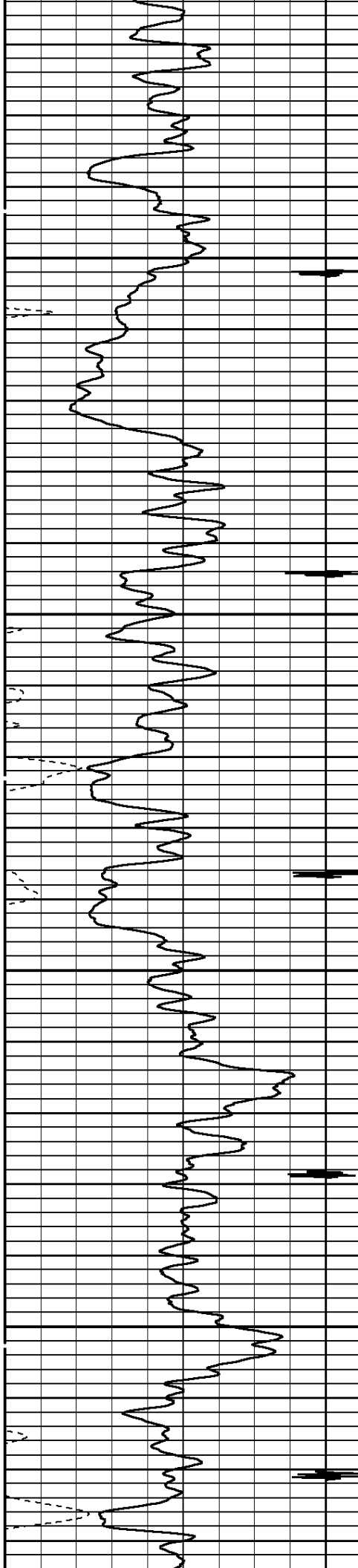


3800

3900

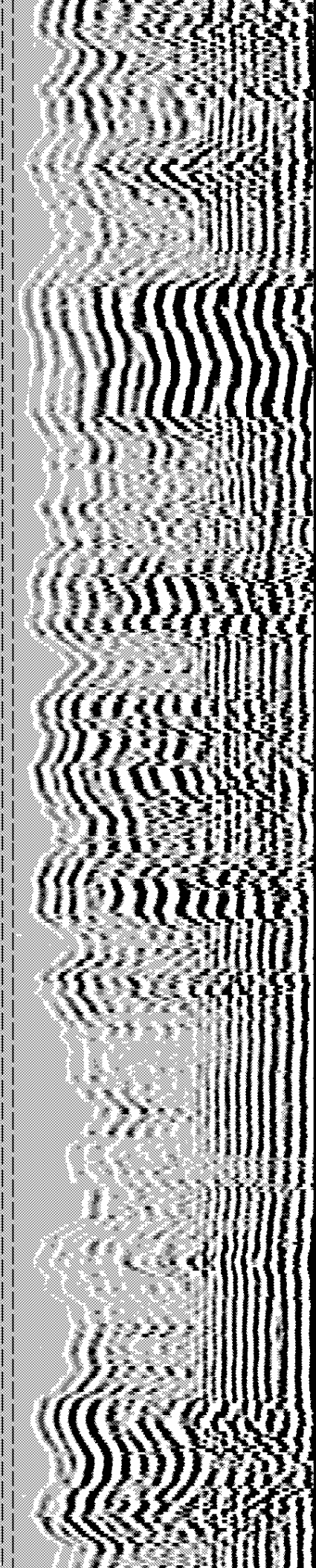
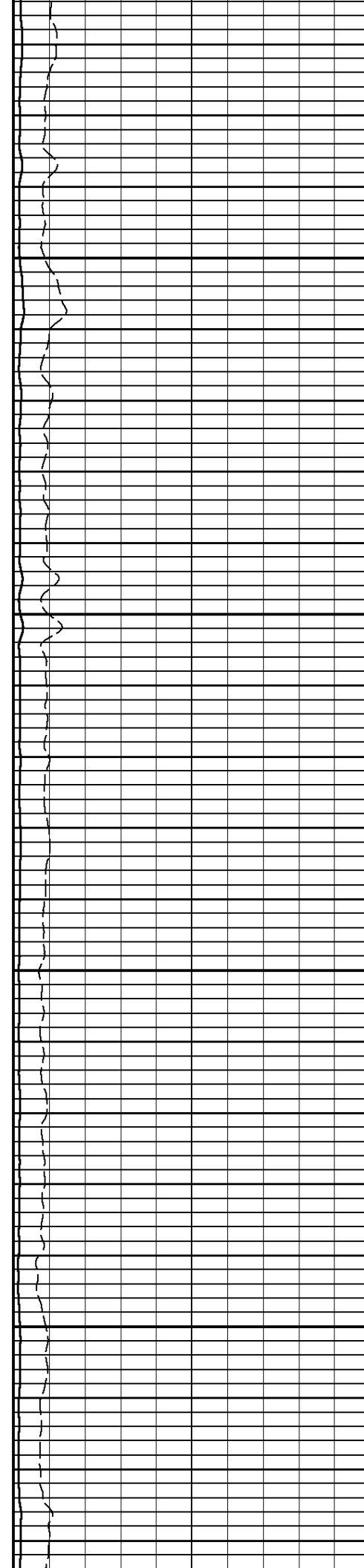


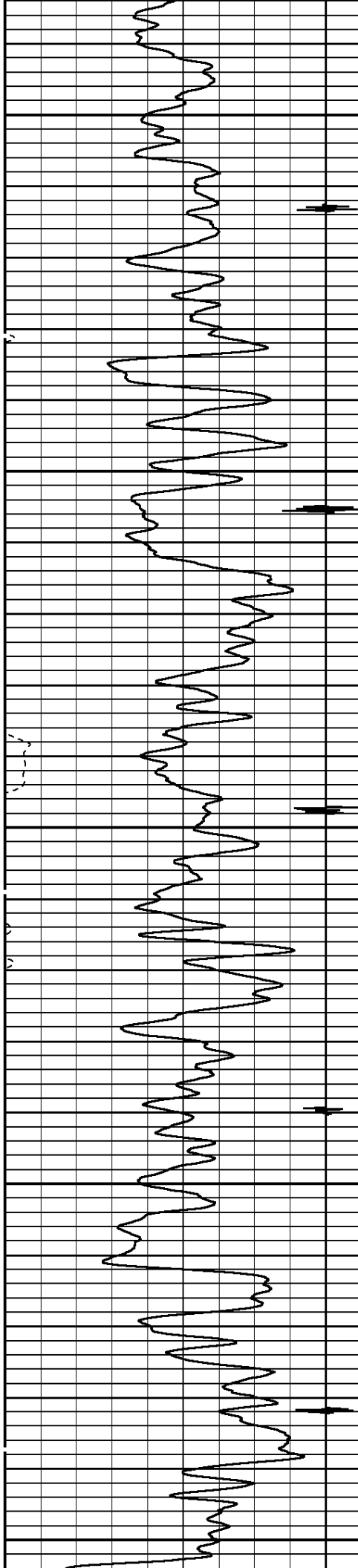




4300

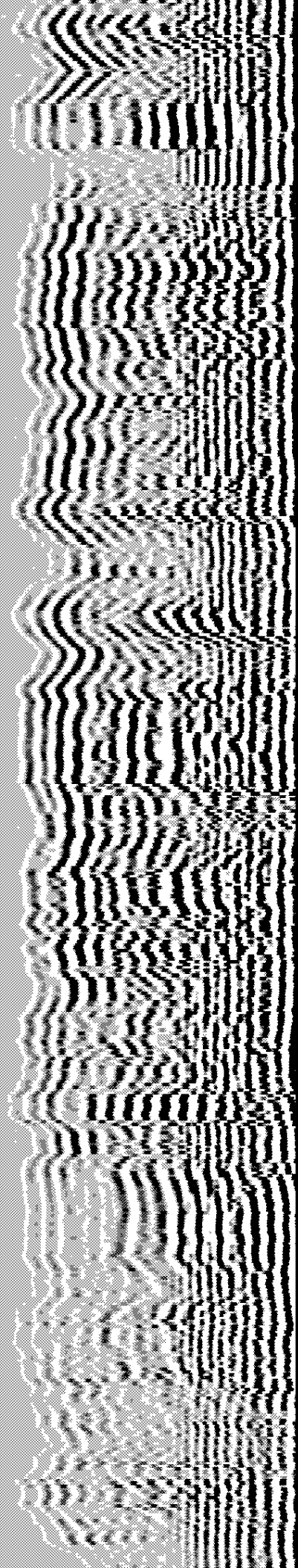
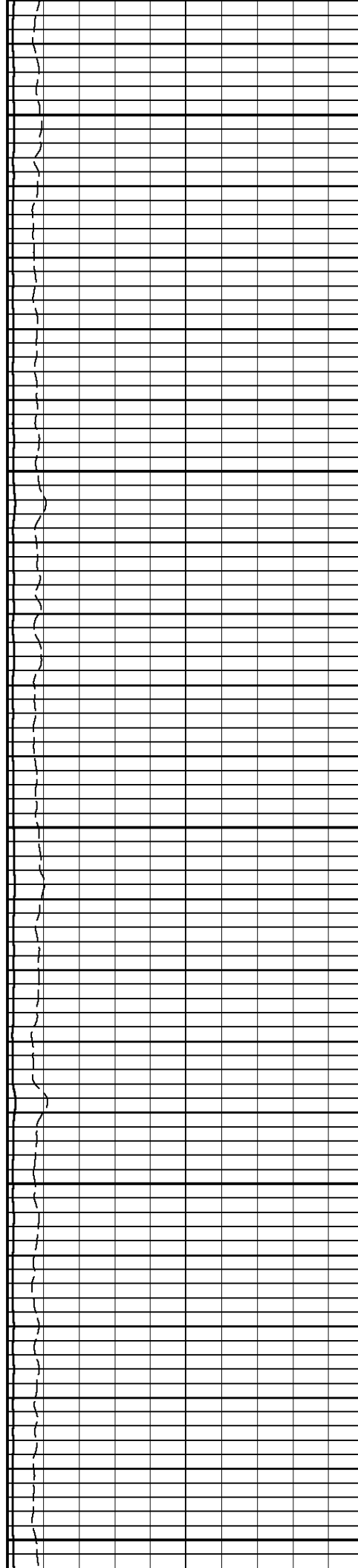
4400

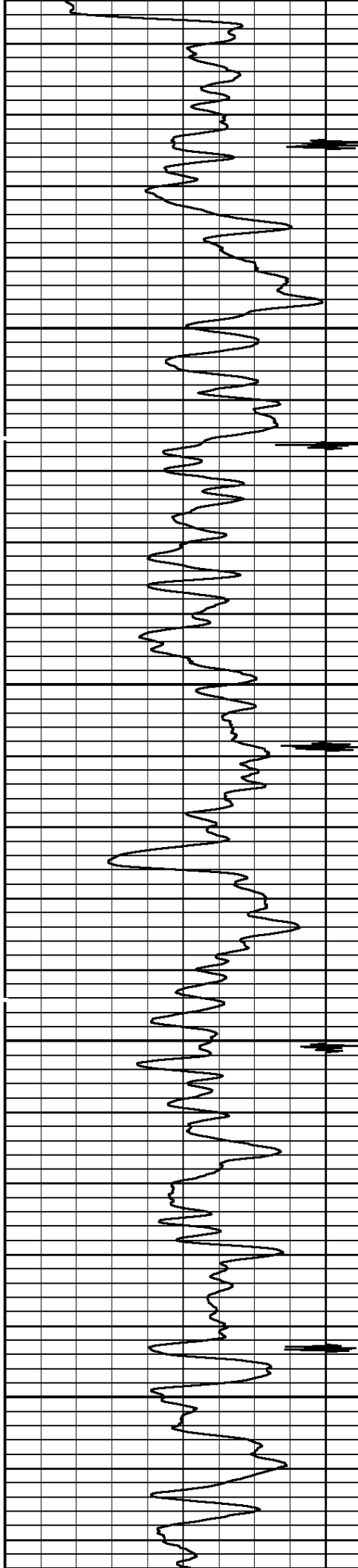




4500

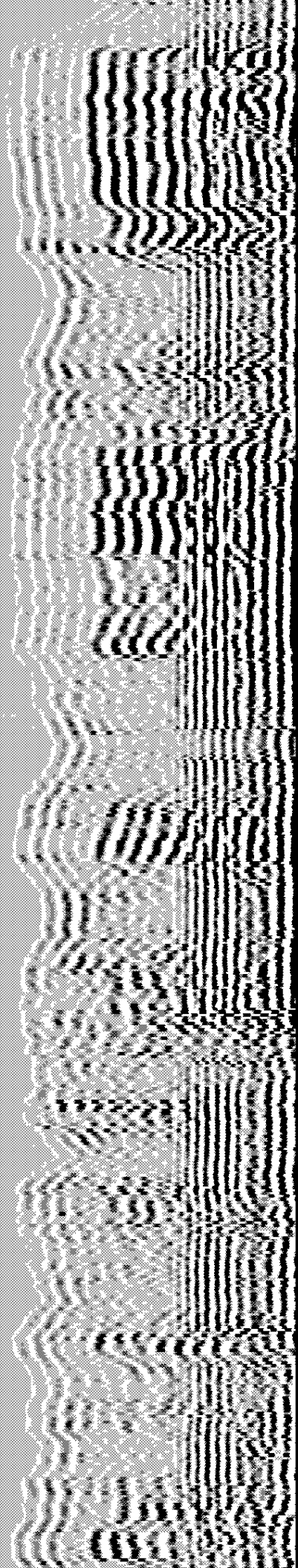
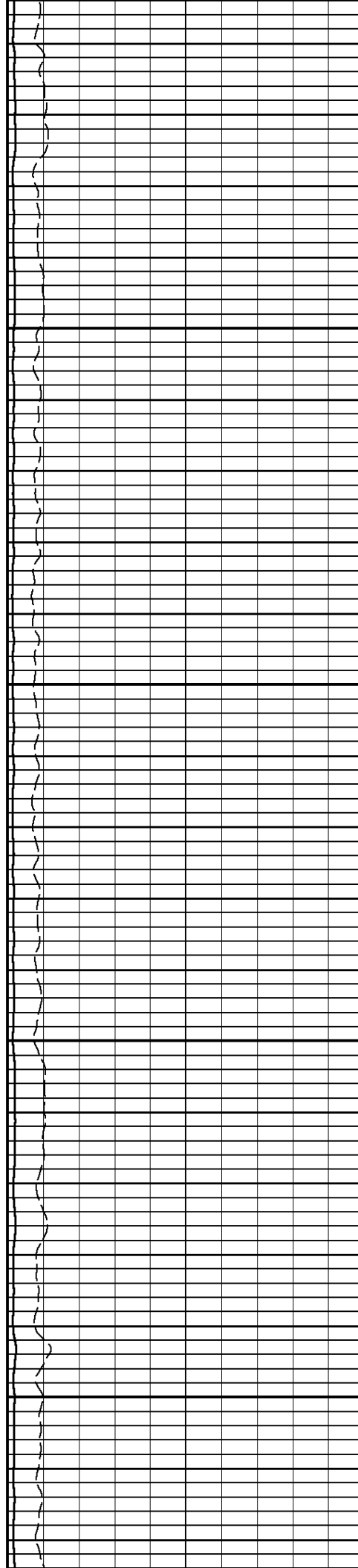
4600

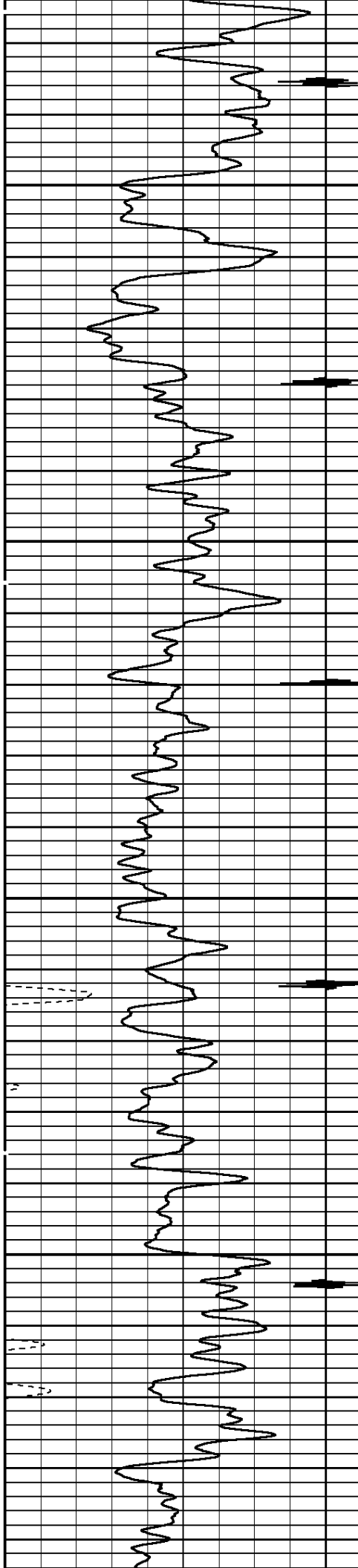




4700

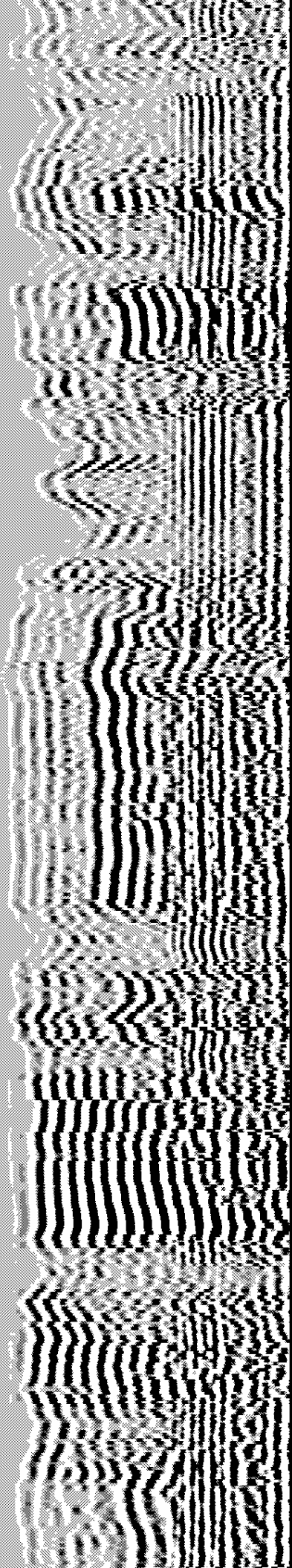
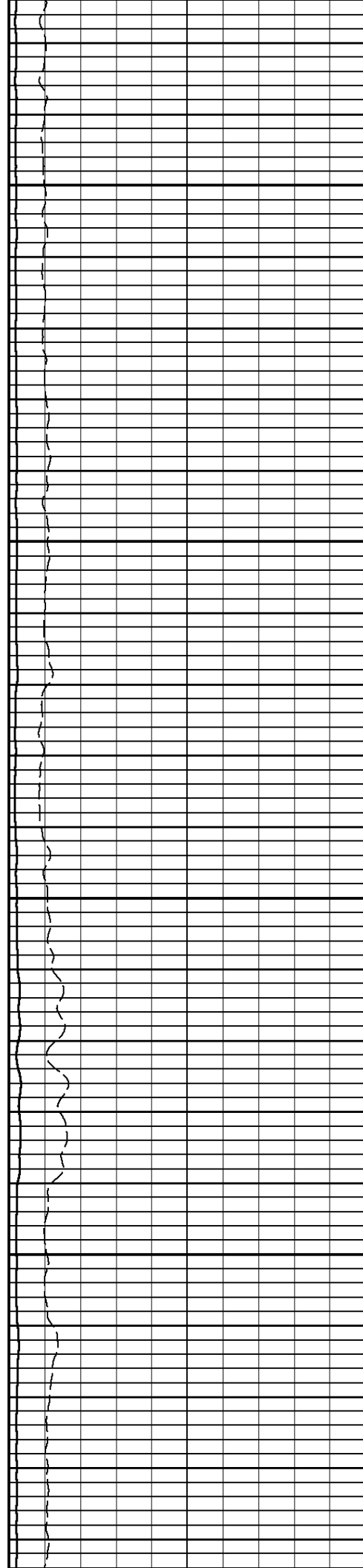
4800

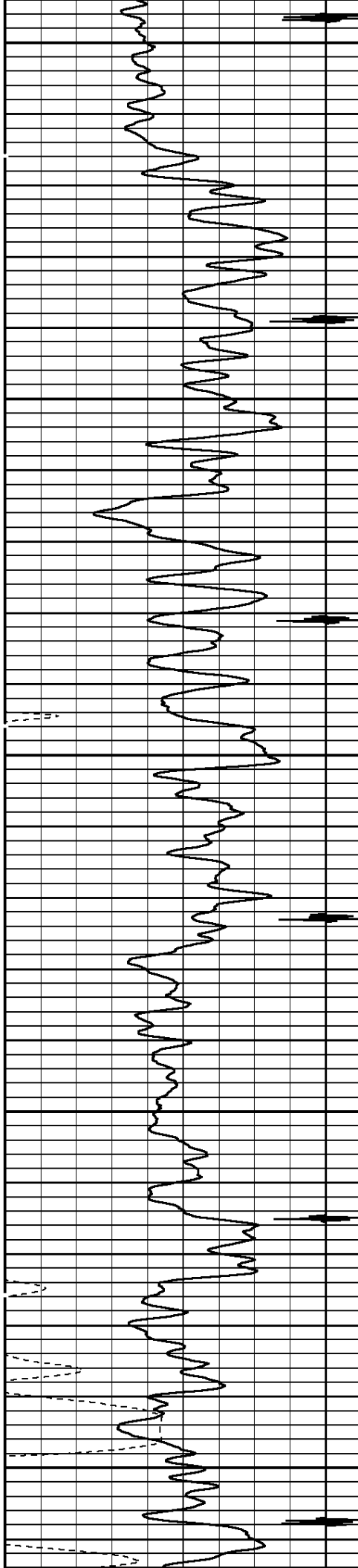




4900

5000

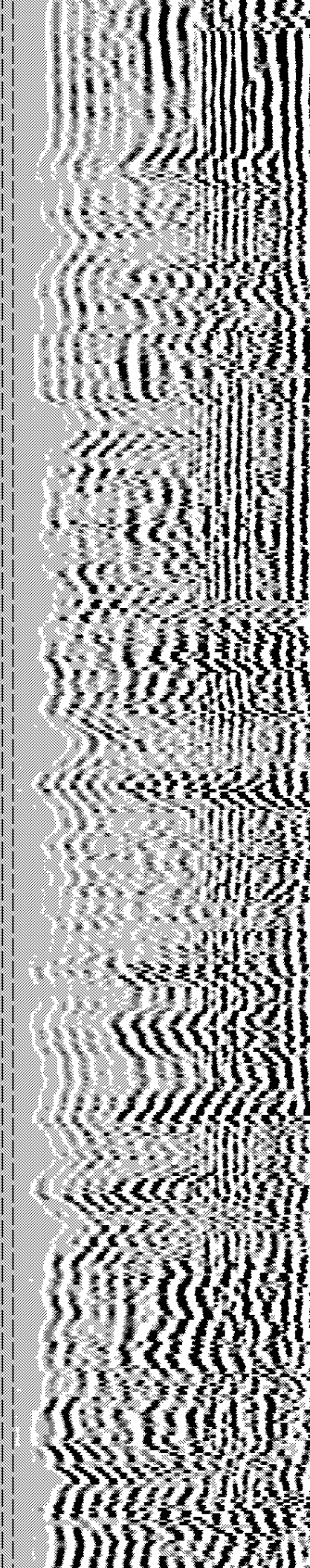
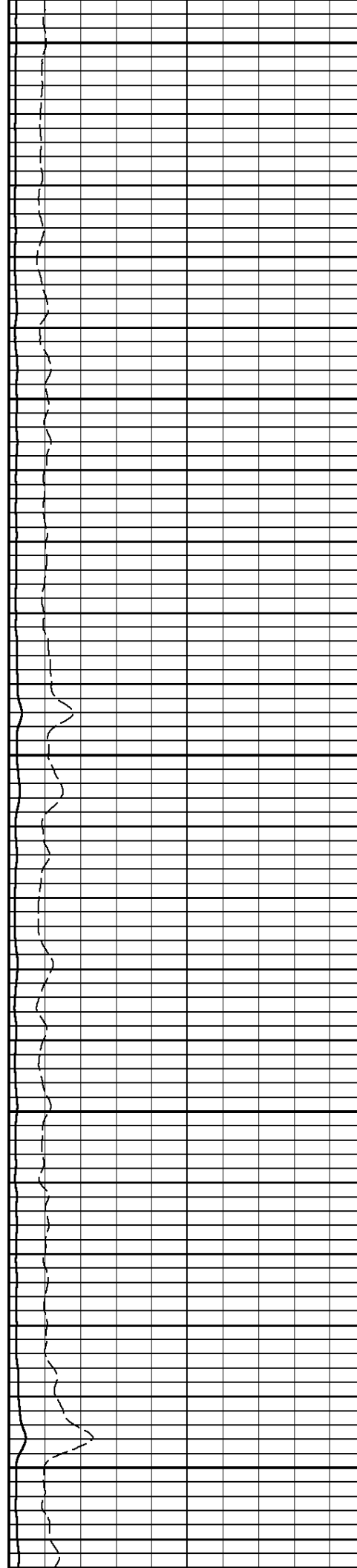


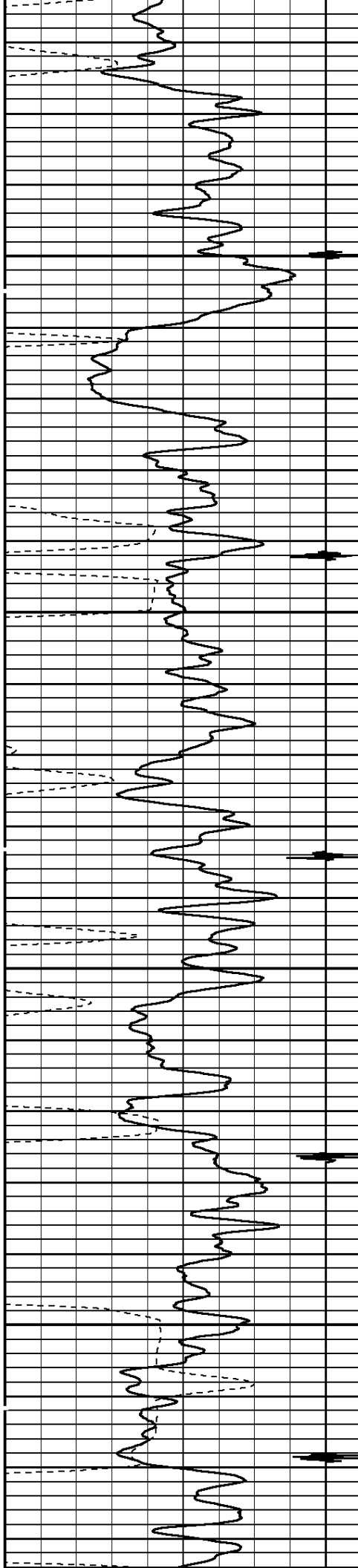


5100

5200

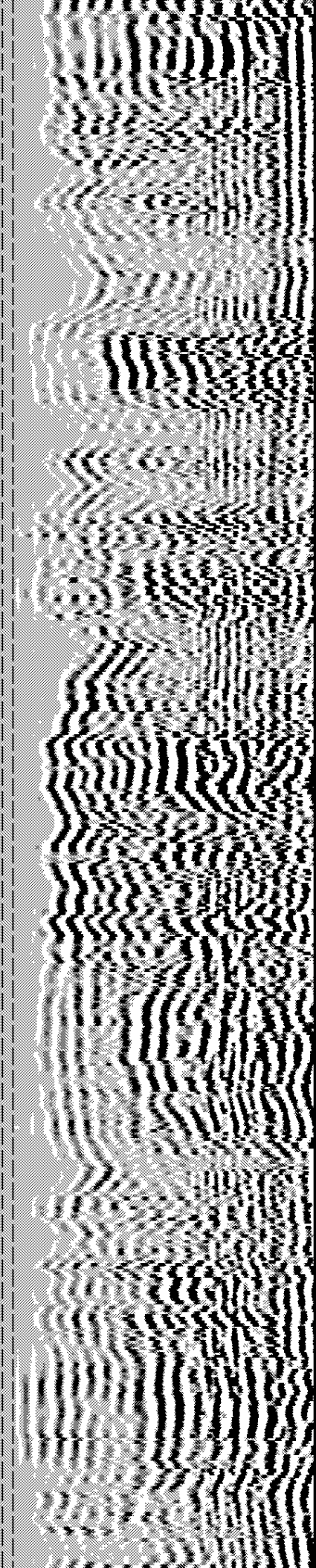
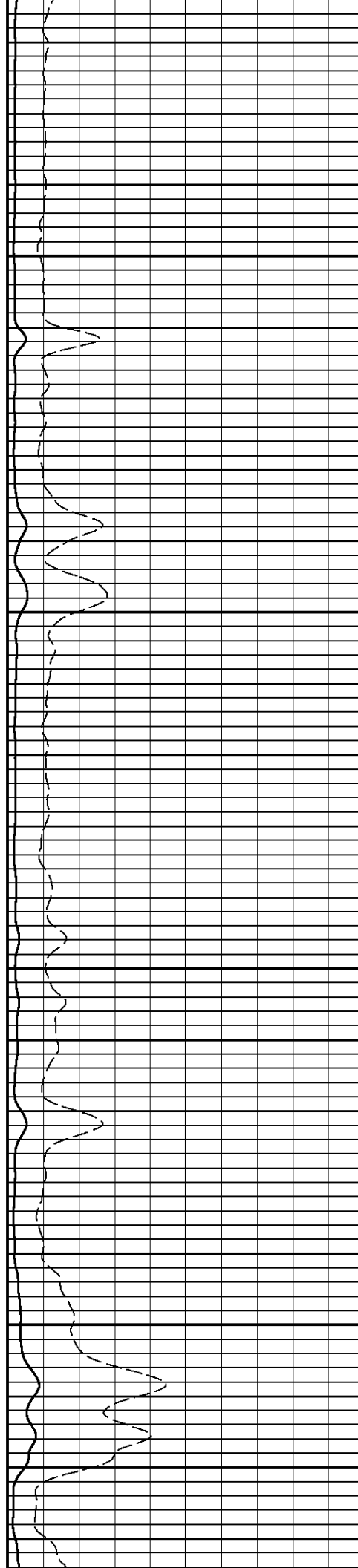
5300

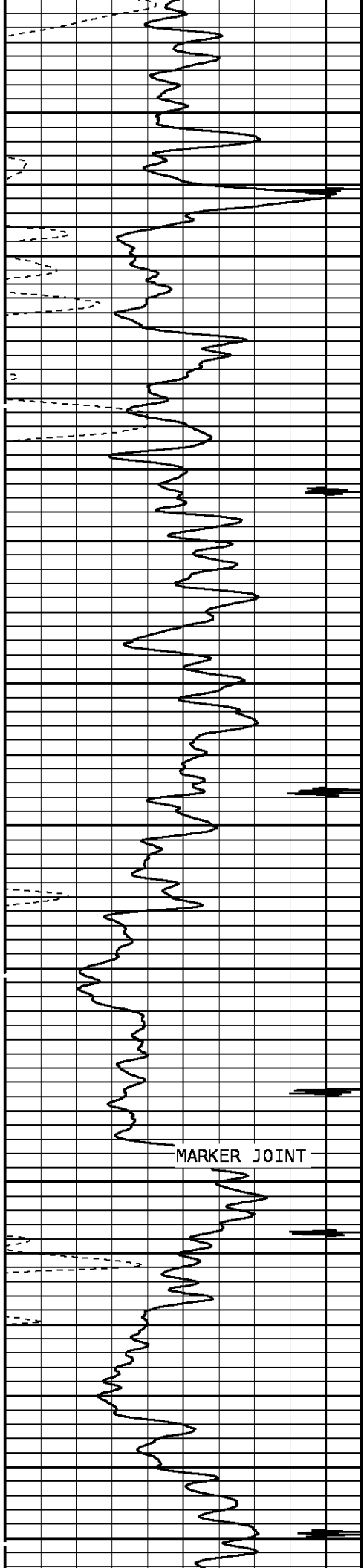




5400

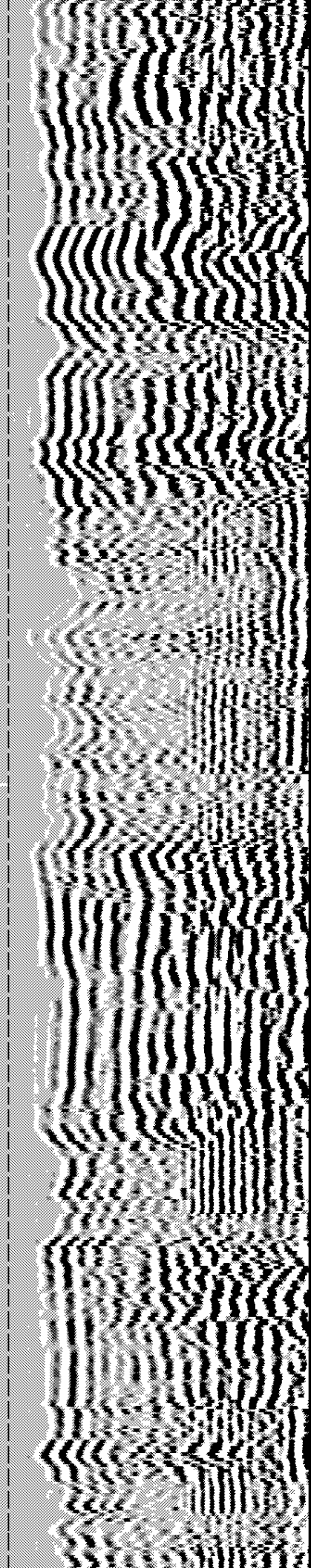
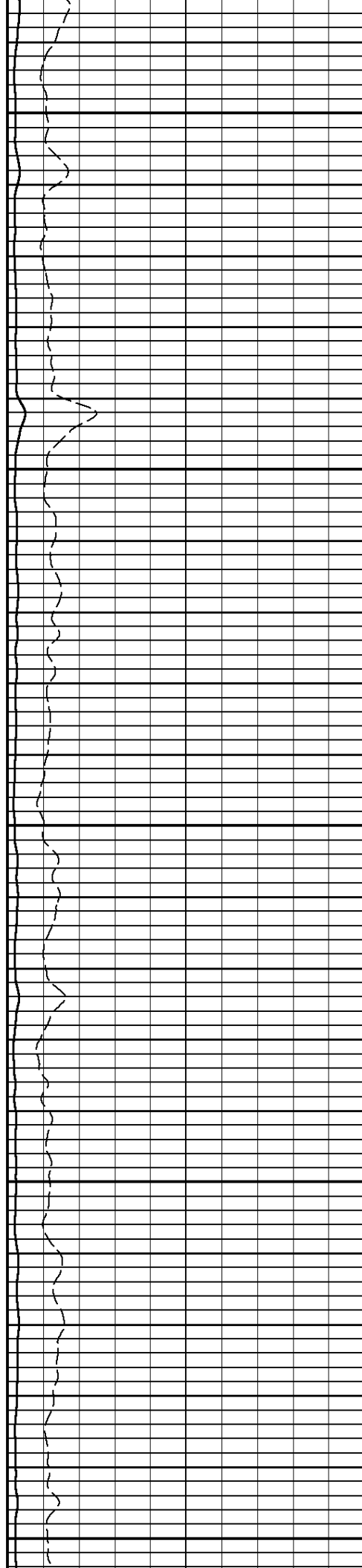
5500

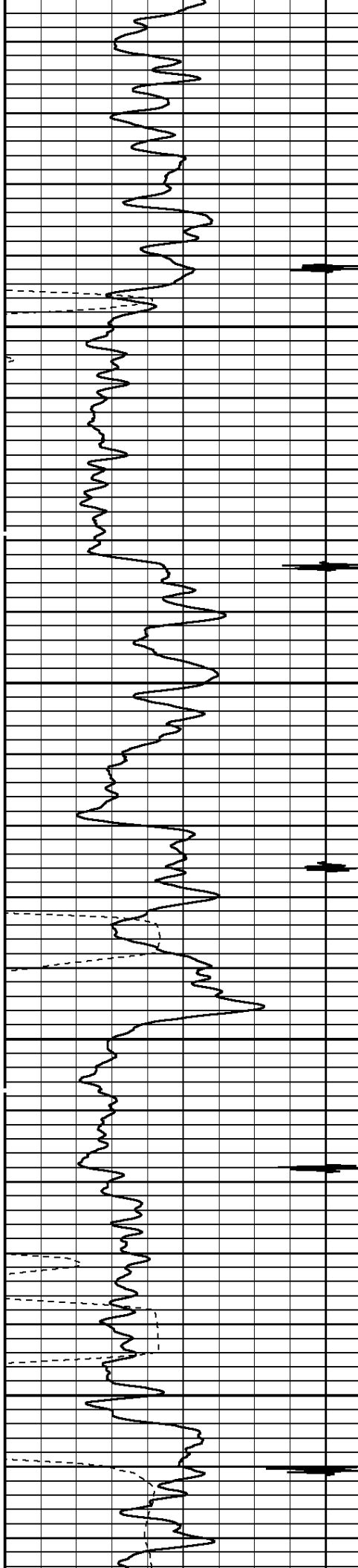




5600

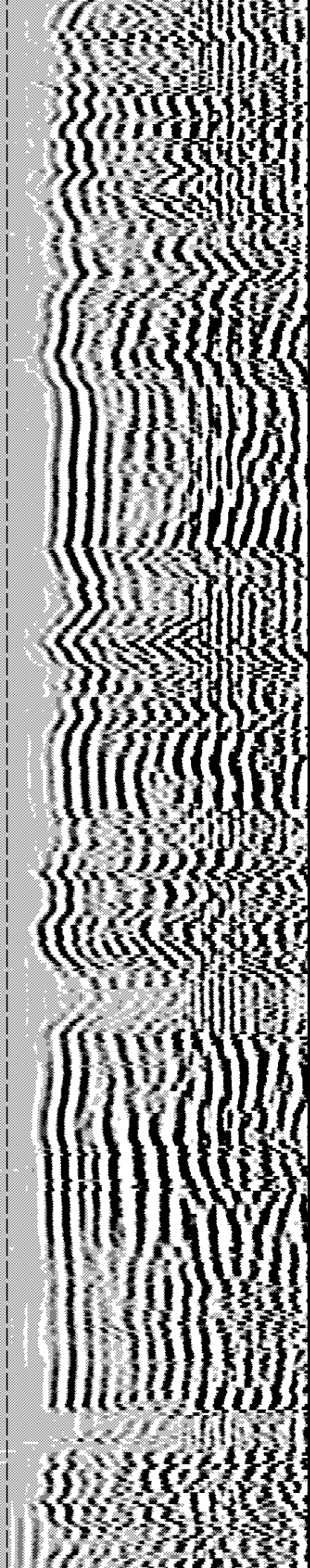
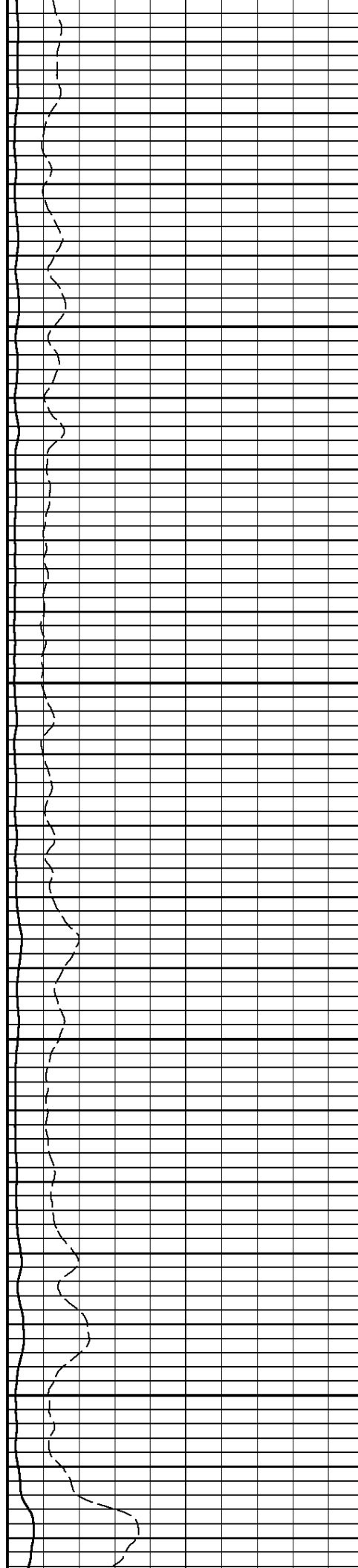
5700

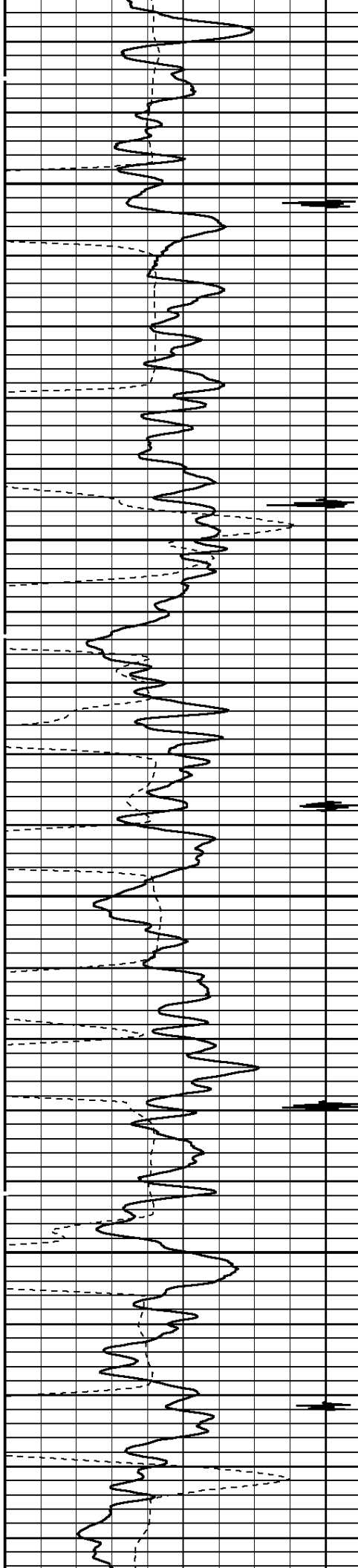




5800

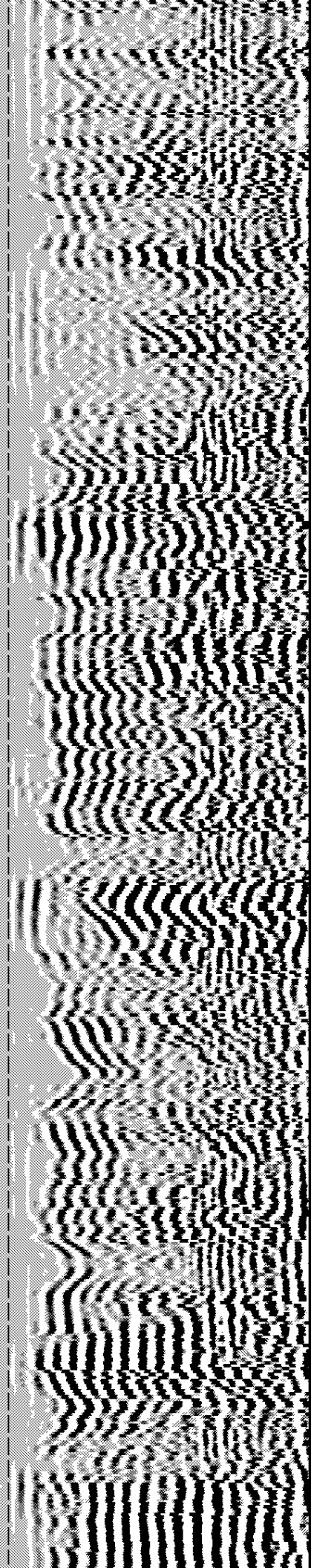
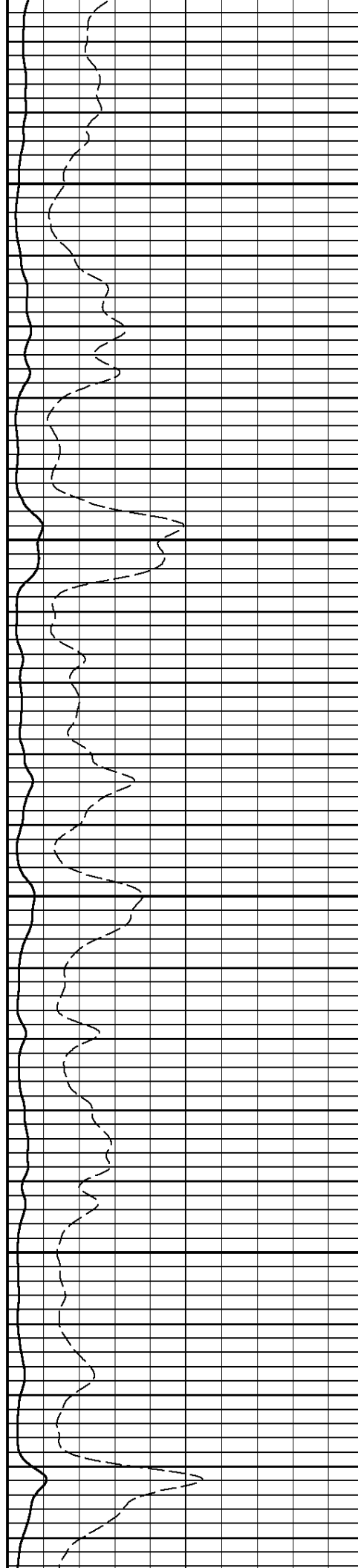
5900

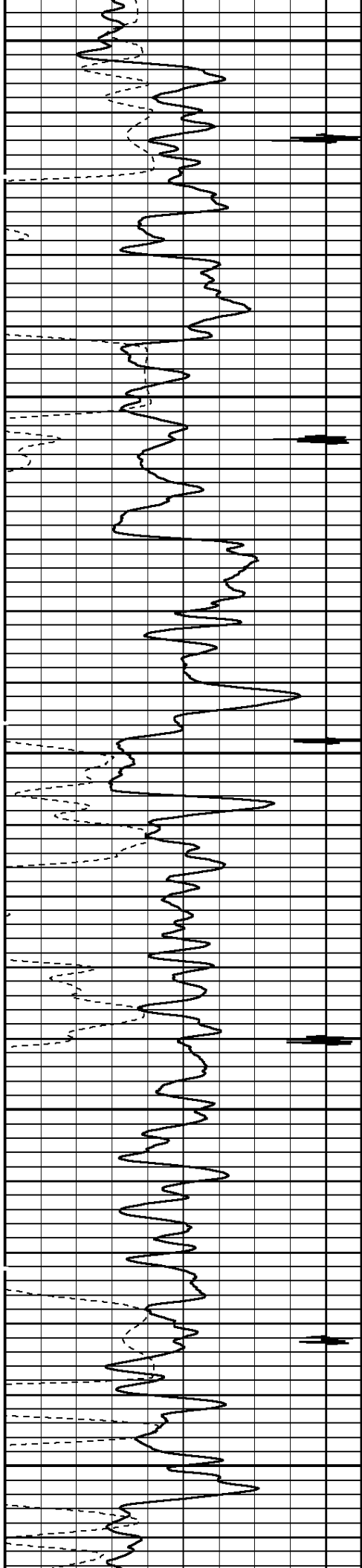




6000

6100

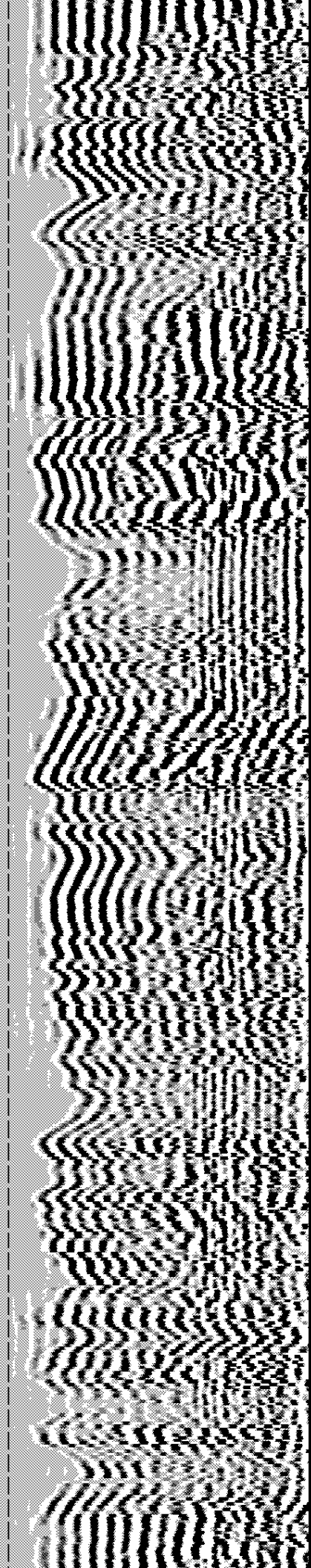
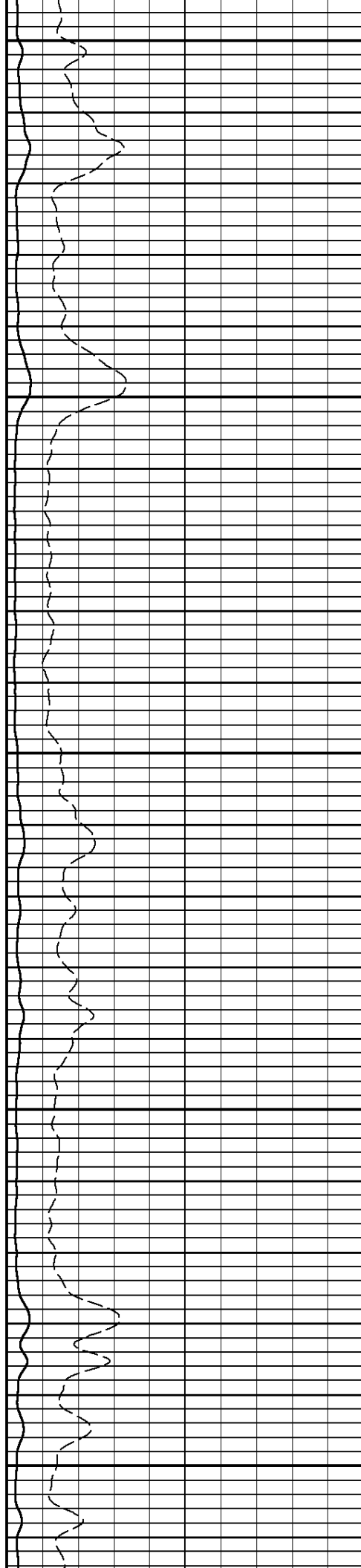


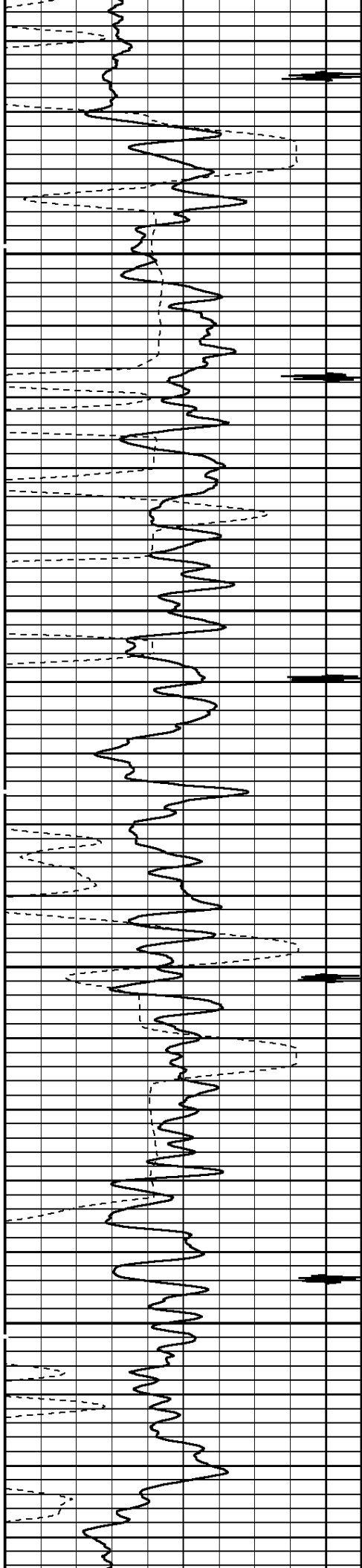


6200

6300

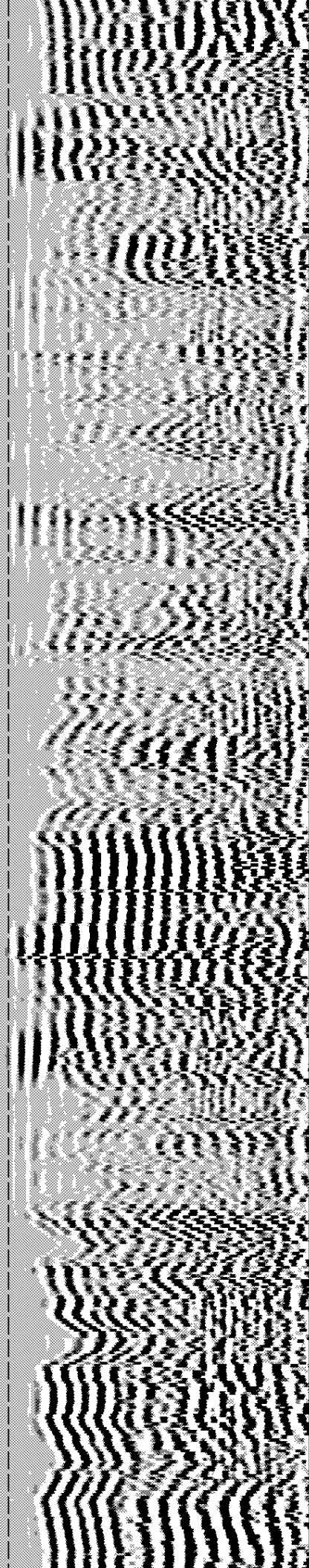
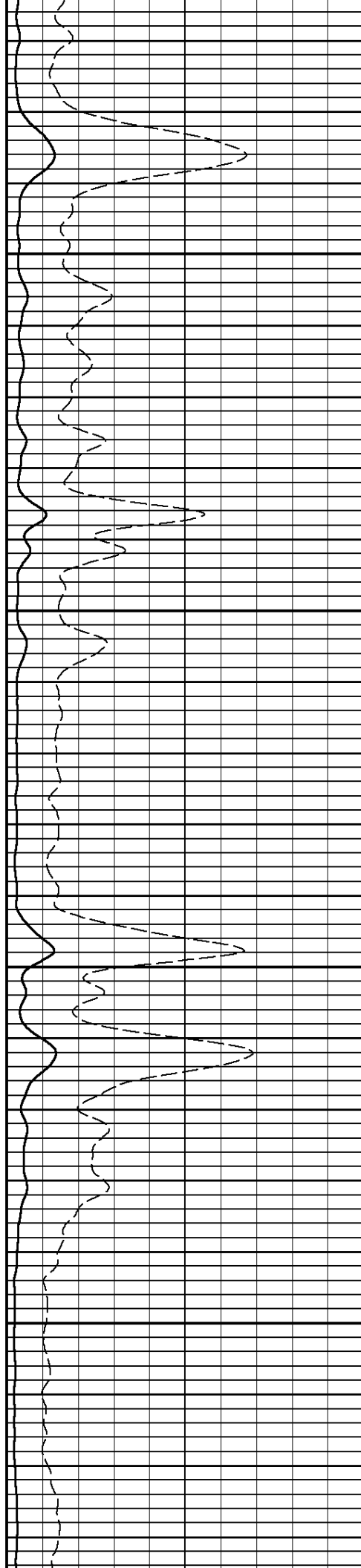
6400

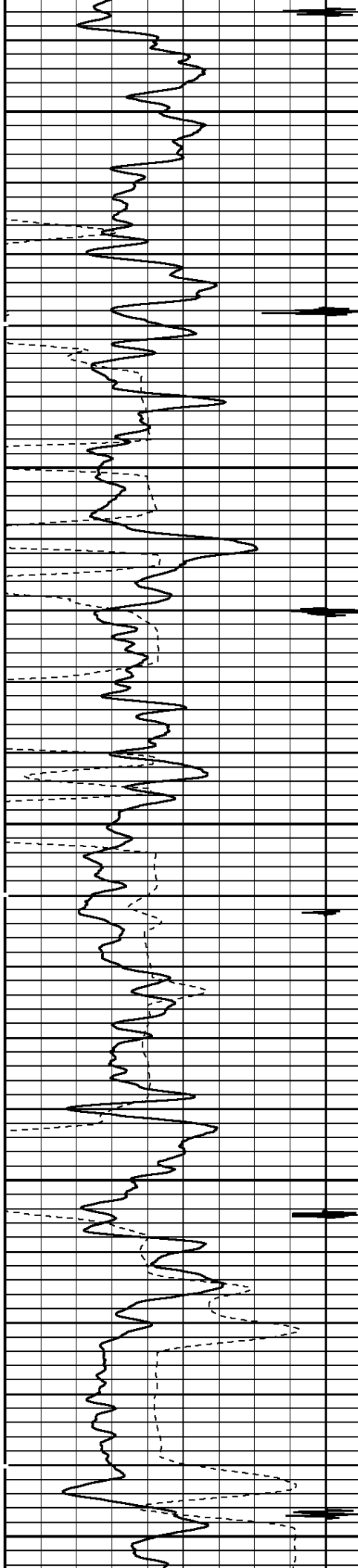




6500

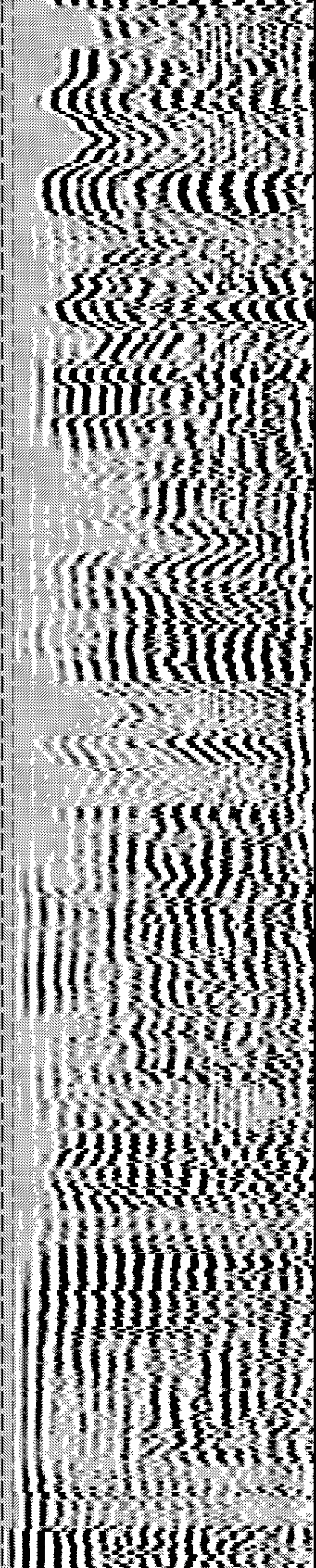
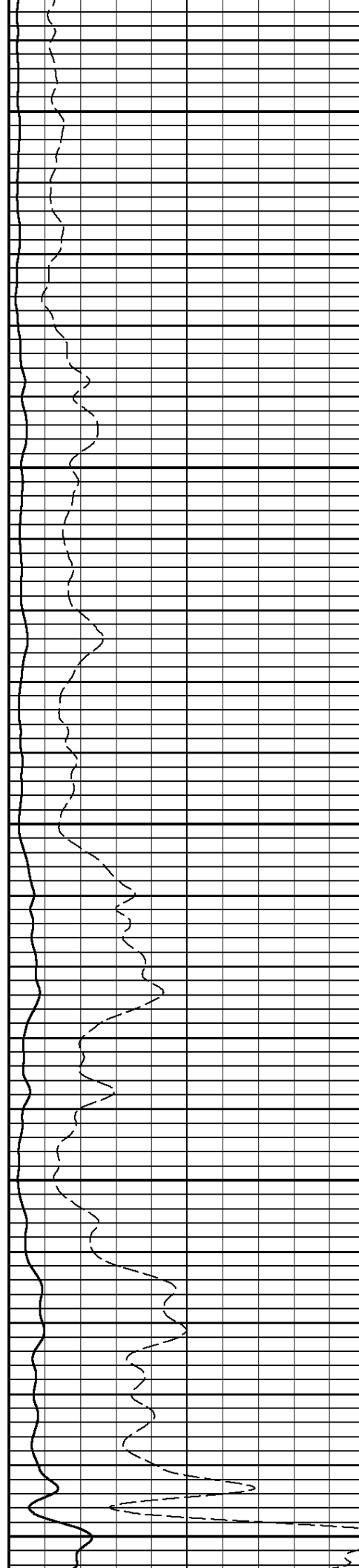
6600

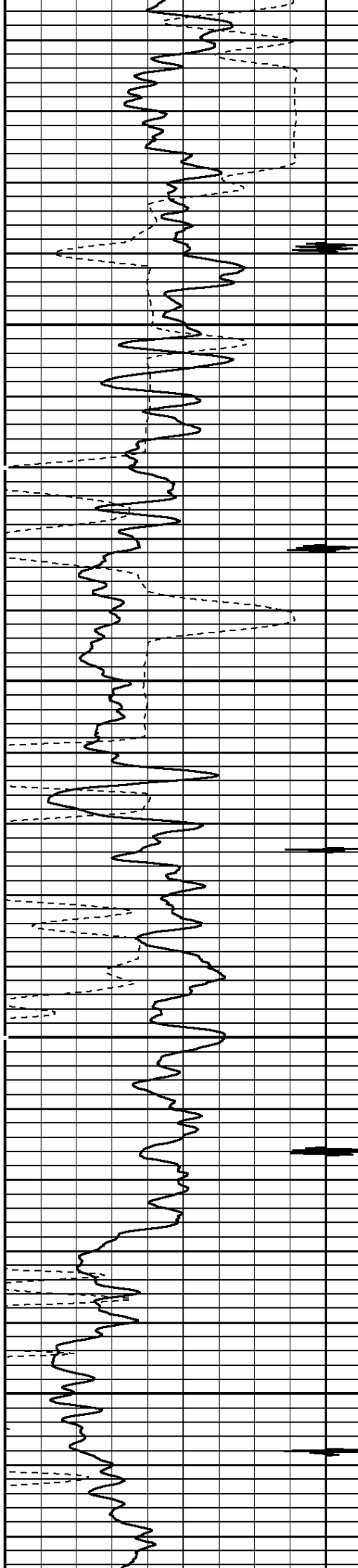




6700

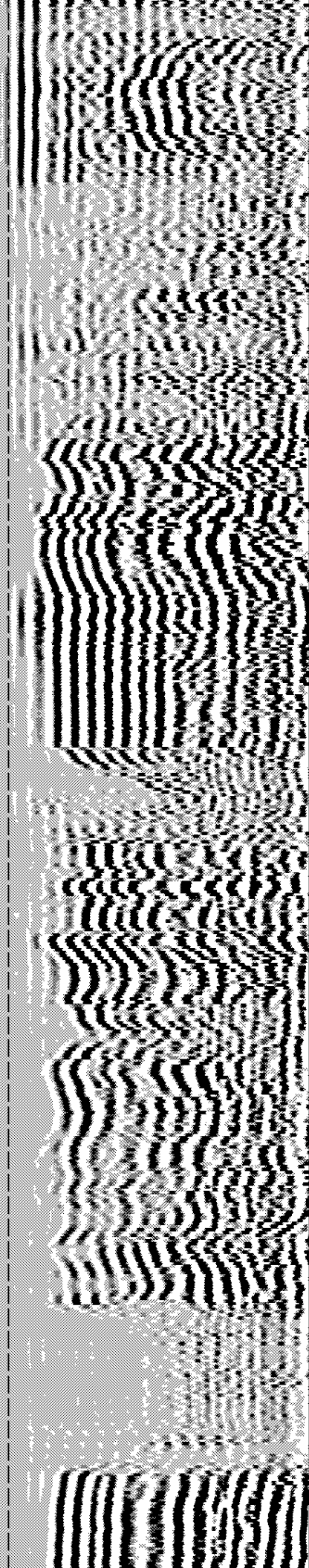
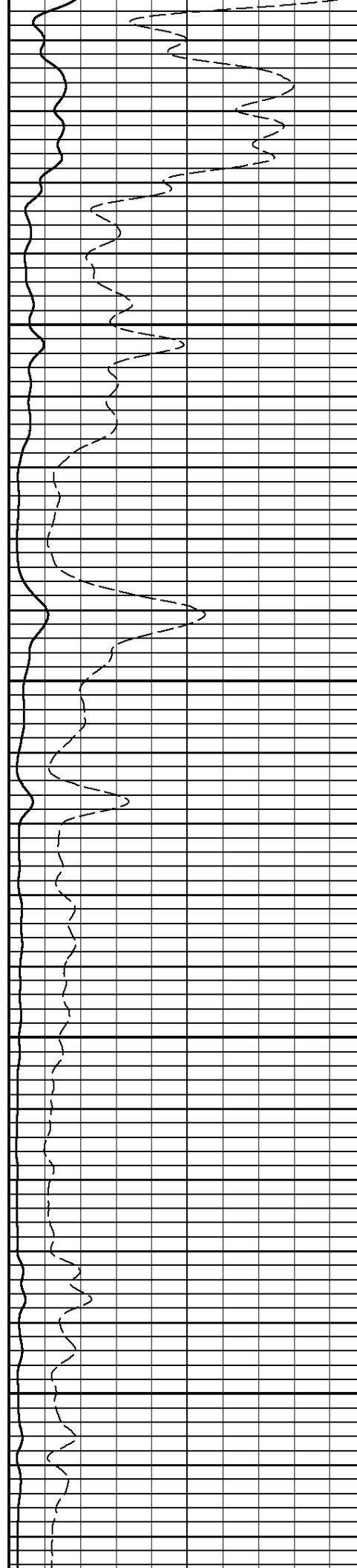
6800

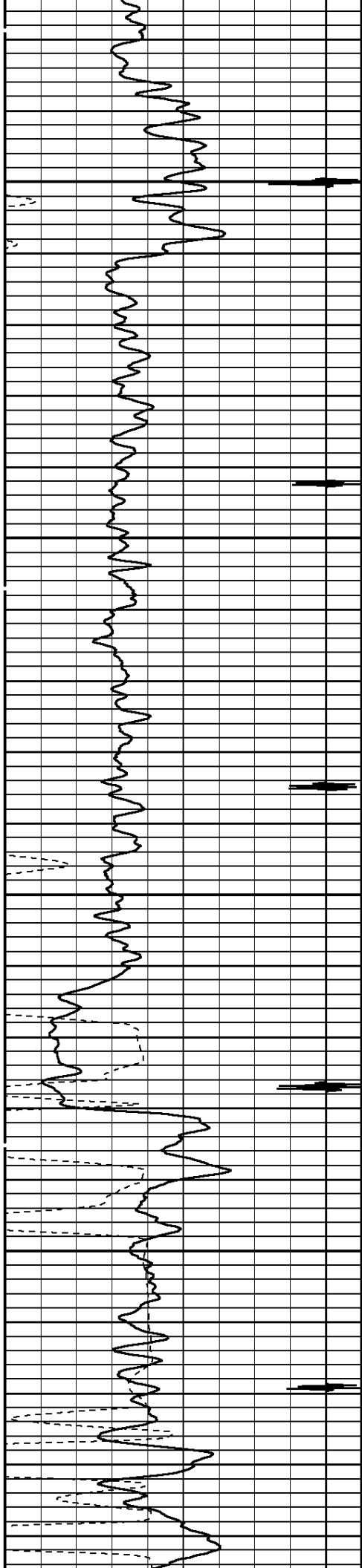




6900

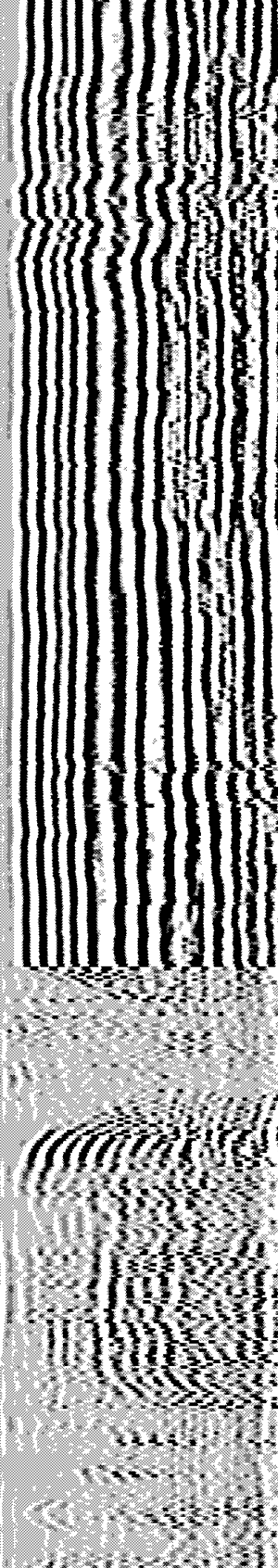
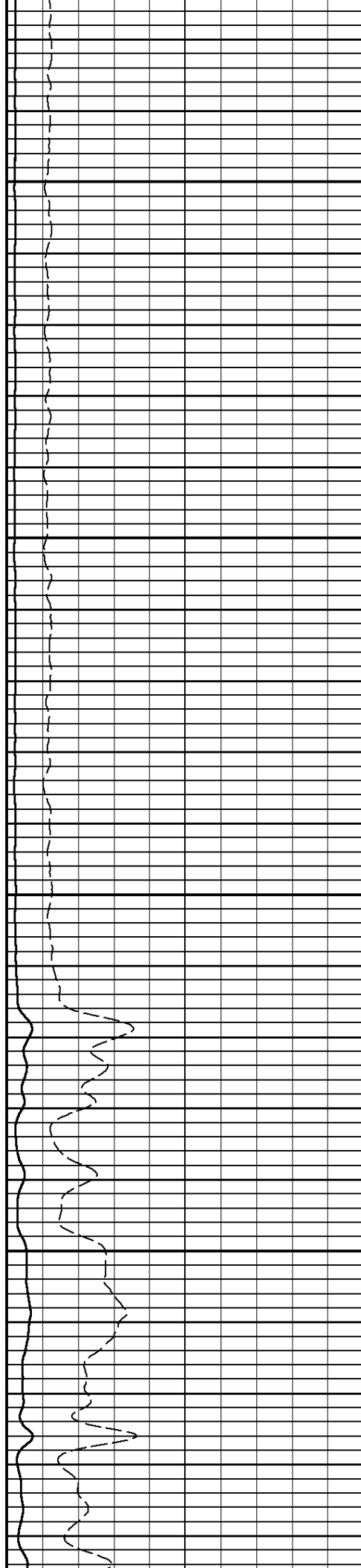
7000

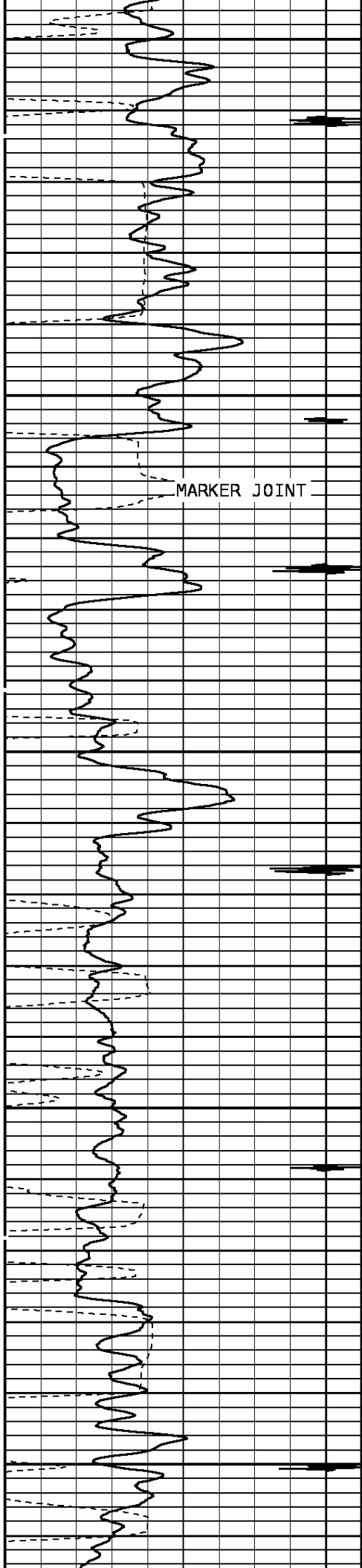




7100

7200

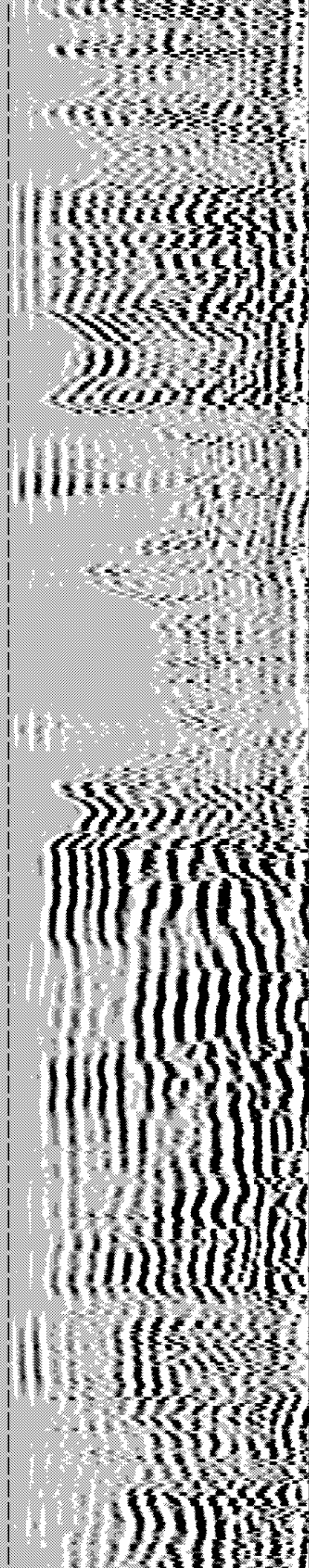
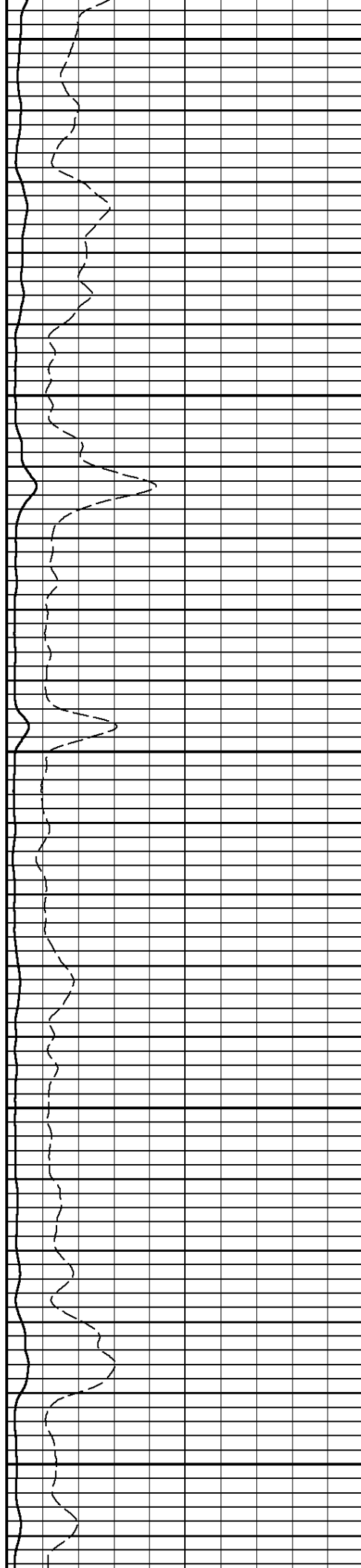


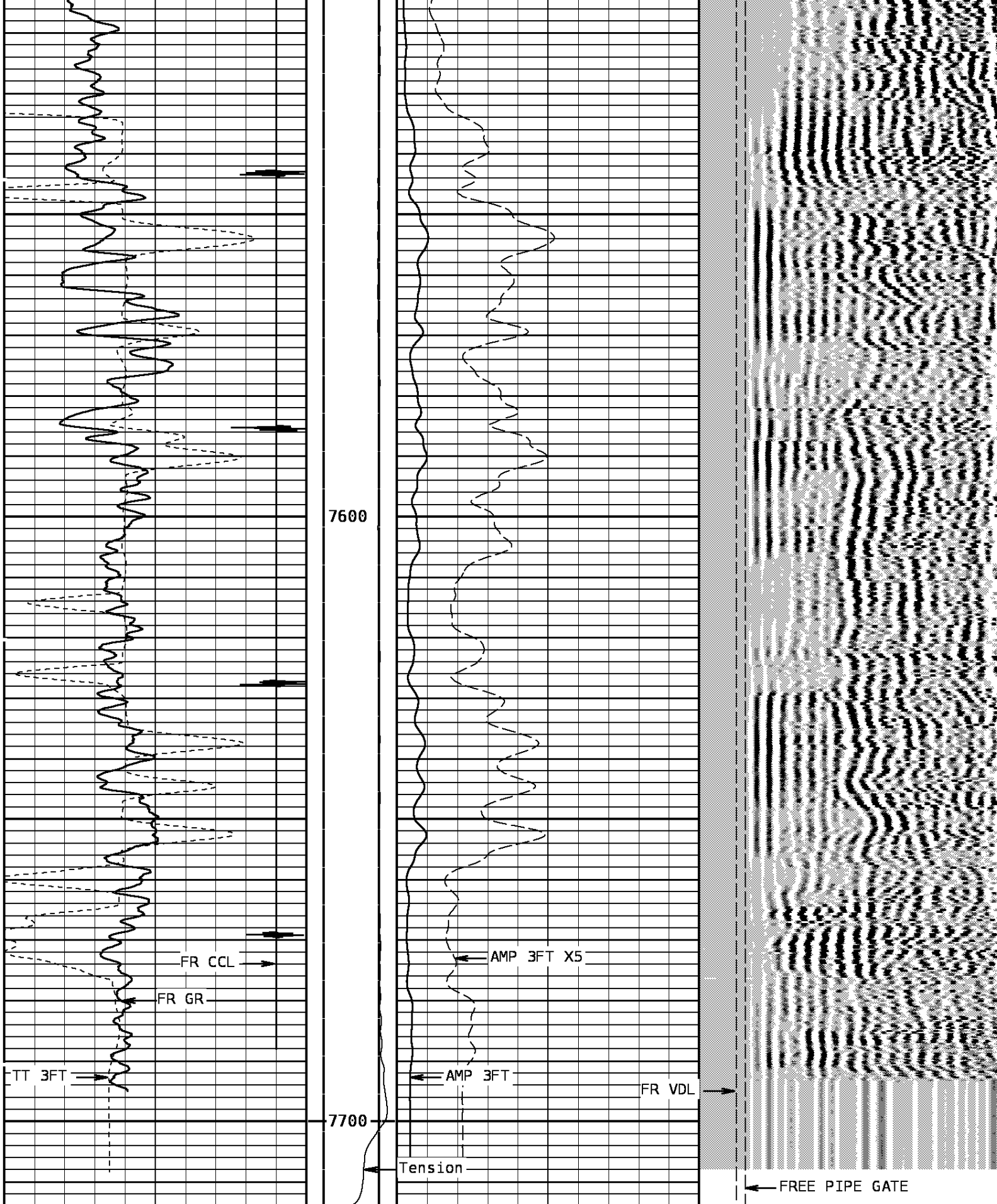


7300

7400

7500





TRAVEL TIME 3FT		Tension		AMPLITUDE 3FT		VARIABLE DENSITY 5FT	
310	Microseconds	210	0 2400	0	100	200	1200
Gamma Ray				AMPLITUDE 3FT X5		FREE PIPE GATE	

0	API	150	0	Millivolts	20	200	Microseconds	1200
Collar Locator						FREE PIPE GATE		
-8000	Millivolts	880				200	Microseconds	1200

START DEPTH: 7714.3

DIRECTION: UP

DATE: 12/23/2008

TIME: 04:59

MODE: ORIGINAL

153113 CBLMAINF

MAIN PASS

DEPTH SCALE: 5":100'

VERSION: 80214133R"

DEPTH SCALE: 5":100'

VERSION: 80214133R"

REPEAT PASS

153113 CBLREPEAT

FINISH DEPTH: 7480.6 Feet

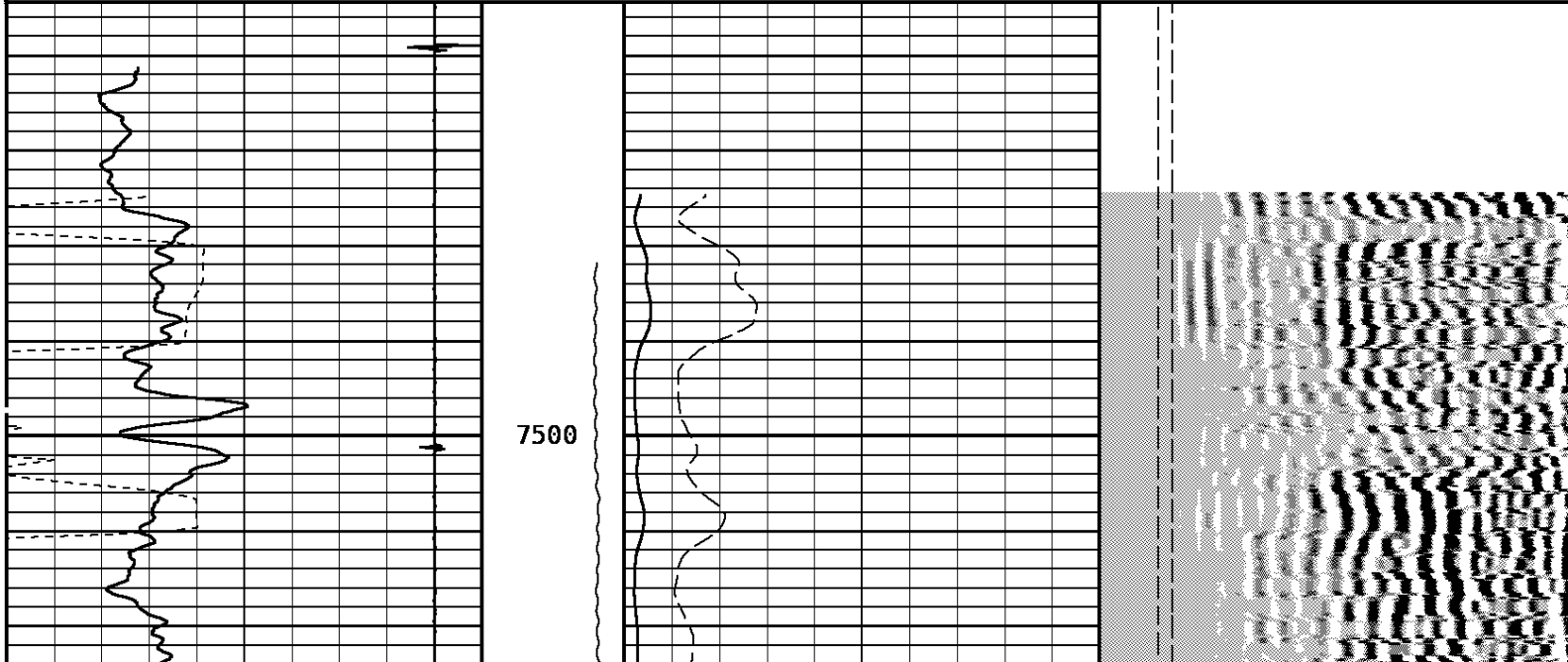
DIRECTION: UP

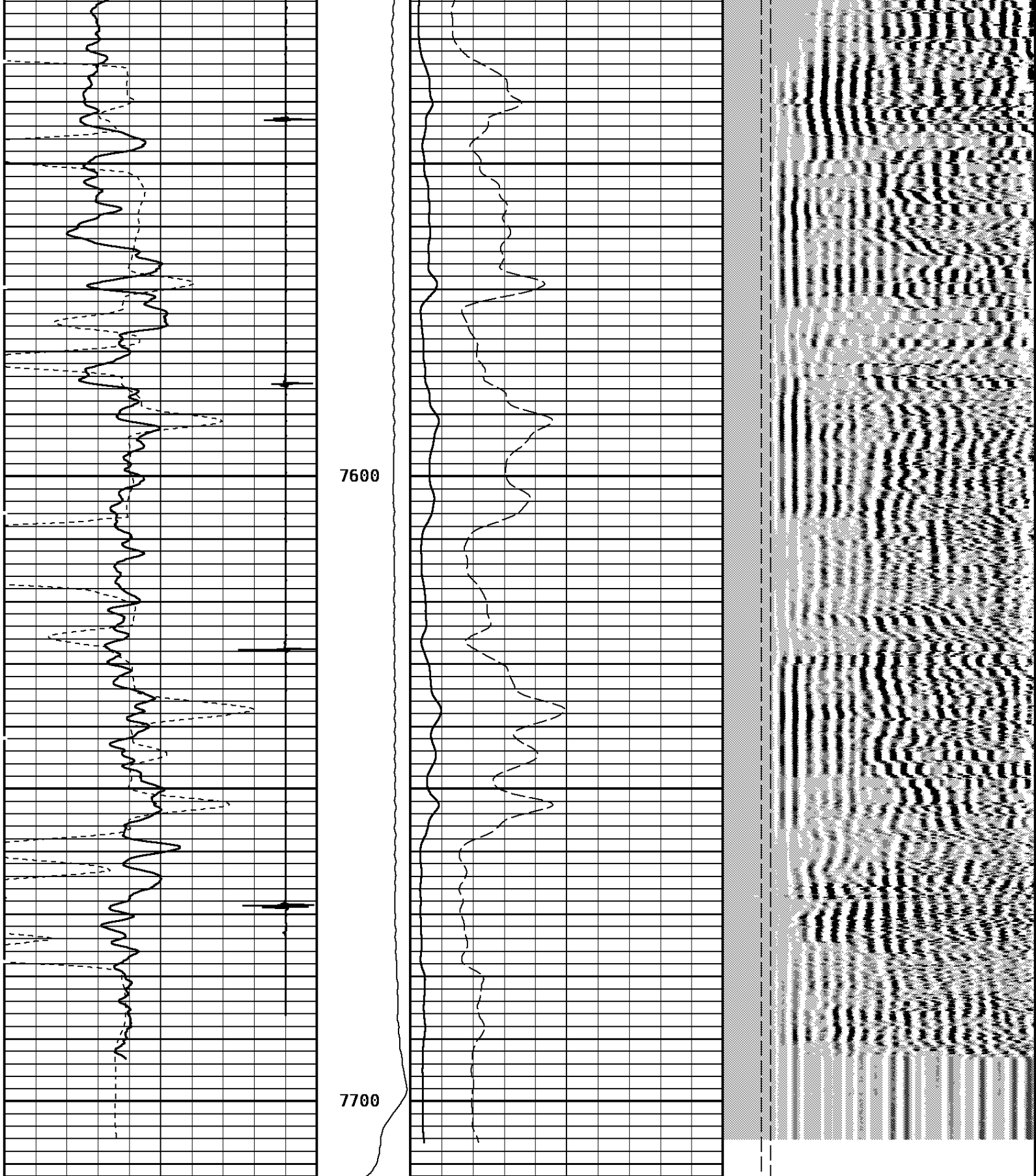
DATE: 12/23/2008

TIME: 03:13

MODE: ORIGINAL

Collar Locator						FREE PIPE GATE		
-8000	Millivolts	880				200	Microseconds	1200
Gamma Ray			AMPLITUDE 3FT X5			FREE PIPE GATE		
0	API	150	0	Millivolts	20	200	Microseconds	1200
TRAVEL TIME 3FT			Tension	AMPLITUDE 3FT		VARIABLE DENSITY 5FT		
310	Microseconds	210	0 2400	0	Millivolts 100	200	Microseconds	1200





TRAVEL TIME 3FT			Tension	AMPLITUDE 3FT			VARIABLE DENSITY 5FT			
310	Microseconds	210		0	2400	0	100	200	Microseconds	1200
Gamma Ray				AMPLITUDE 3FT X5			FREE PIPE GATE			
0	API	150			0	20	200	Microseconds	1200	
Collar Locator								FREE PIPE GATE		

-8000	Millivolts	880	200	Microseconds	1200
START DEPTH: 7712.5 DIRECTION: UP DATE: 12/23/2008 TIME: 03:12 MODE: ORIGINAL					
153113 CBLREPEAT					
REPEAT PASS					
DEPTH SCALE: 5":100'				VERSION: 80214133R"	

12/21/08	22:47	1164.7 F	Ver 80214133R	Job 153112
Sector Bond After Calibration				
Tool Type	SBT-AA	Serial No	28345	
Sensor	Description	Standard	Measured	
AMP 3FT	ZERO	1.00	8.50	
	PLUS	81.00	1302.85	
AMP 5FT	ZERO	0.00	6.44	
	PLUS	100.00	1765.65	
1 SECTOR AMP	ZERO	5.00	251.91	
	PLUS	95.00	1646.06	
2 SECTOR AMP	ZERO	5.00	297.59	
	PLUS	95.00	1681.33	
3 SECTOR AMP	ZERO	5.00	45.98	
	PLUS	95.00	1614.24	
4 SECTOR AMP	ZERO	5.00	96.31	
	PLUS	95.00	1308.63	
5 SECTOR AMP	ZERO	5.00	59.61	
	PLUS	95.00	1245.25	
6 SECTOR AMP	ZERO	5.00	27.72	
	PLUS	95.00	1163.45	
7 SECTOR AMP	ZERO	5.00	154.25	
	PLUS	95.00	1169.64	
8 SECTOR AMP	ZERO	5.00	269.96	
	PLUS	95.00	1126.40	

1 7/16 Adapter Head

Weight 2.2 LB.
Length 12 IN.
Max. Diameter 1.44 IN.

Total Stack Weight 223.0 LBS. in air
Total Stack Length 27.83 FT.

Slim Hole Centralizer

Weight 15 lbs
Length 2.49 FT.
Max. Diameter 2.750 IN.

Collar Locator

Weight 39.8 LBS.
Length 3.40 FT.
Max. Diameter 2.75 IN.

Slim Hole Gamma Ray

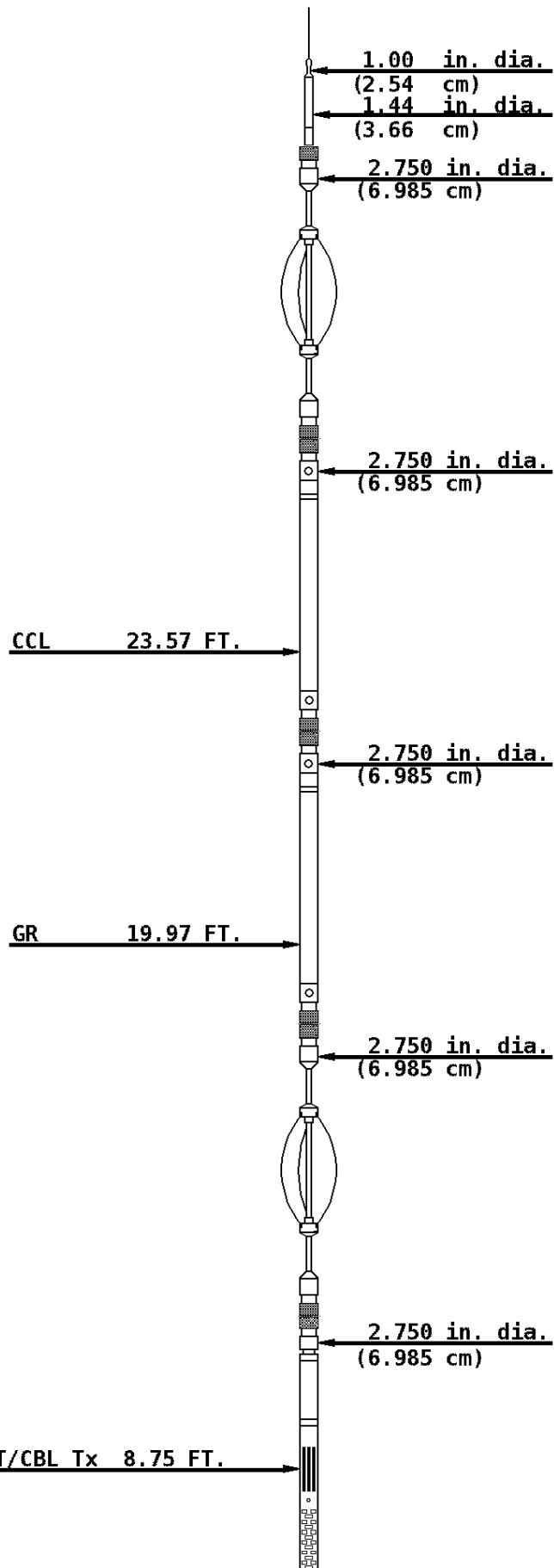
Weight 39.8 LBS.
Length 4.71 FT.
Max. Diameter 2.750 IN.

Slim Hole Centralizer

Weight 22 LBS.
Length 3.08 FT.
Max. Diameter 2.750 IN.

Sector Bond

Weight 89.2 LBS.
Length 10.32 FT.
Max. Diameter 2.750 IN.



SBT Rx 7.77 FT.

3' Rx 7.28 FT.

5' Rx 6.28 FT.

2.750 in. dia.
(6.985 cm)

Slim Hole Centralizer

Weight 15.0 LBS.
Length 2.82 FT.
Max. Diameter 2.750 IN.

Tool Zero

COMPANY BILL BARRETT CORPORATION

WELL BRYNILDSON 23B-20-692

FIELD MAMM CREEK

COUNTY GARFIELD

STATE COLORADO



Weatherford®