



Baker Atlas

BOREHOLE PROFILE LOG

FILE NO: 5598
APN NO: 05-045-14980000
COMPANY: ENCANA OIL & GAS (USA), INC.
WELL: ENCANA 11-3B2
FIELD: MAMM CREEK
COUNTY: GARFIELD
STATE: COLORADO

Ver. 3.87

LOCATION:

SURFACE: 1648' FNL & 1489' FNL SE/NE
BTL: 595' FNL & 1700' FNL NE/NE

OTHER SERVICES

SEC 11 TWP 7S RGE 92E

H014/Z01/CN

PERMANENT DATUM
LOG MEASURED FROM
DRILL MEAS. FROM
G.L. ELEVATION 8124 FT
K.B. 19 FT ABOVE P.D.
K.B.

ELEVATIONS:
KB 8143 FT
DF 8142 FT
OL 8124 FT

DATE	12-SEP-2008
RUN	1
SERVICE ORDER	523133
DEPTH DRILLER	8424 FT
DEPTH LOGGER	8421 FT
BOTTOM LOGGED INTERVAL	8386 FT
TOP LOGGED INTERVAL	1041 FT
CASING DRILLER	9.625 IN
CASING LOGGER	1041 FT
BT SIZE	7.875 IN
TYPE OF FLUID IN HOLE	GEL/CHEMICAL/PPA
DENSITY	12.7 LB/G
PH	9.1
SOURCE OF SAMPLE	FLUORINE
RM AT MEAS. TEMP.	2.21 CHAM
RM AT MEAS. TEMP.	1.39 CHAM
RM AT MEAS. TEMP.	3.75 CHAM
SOURCE OF RMF	MEASURED
RM AT BHT	1.07 CHAM
TIME SINCE CIRCULATION	7 HOURS
MAX. RECORDED TEMP.	162 DEGF
EQUIP. NO.	HL-6670
RECORDED BY	VERCI/MAK
WITNESSED BY	HUNT

IN MAKING INTERPRETATIONS OF LOGS OUR EMPLOYEES WILL GIVE CUSTOMER THE BENEFIT OF THEIR BEST JUDGEMENT. BUT SINCE ALL INTERPRETATIONS ARE OPINIONS BASED ON INFERENCES FROM ELECTRICAL OR OTHER MEASUREMENTS, WE CANNOT, AND WE DO NOT GUARANTEE THE ACCURACY OR CORRECTNESS OF ANY INTERPRETATION. WE SHALL NOT BE LIABLE OR RESPONSIBLE FOR ANY LOSS, COST, DAMAGES, OR EXPENSES WHATSOEVER INCURRED OR SUSTAINED BY THE CUSTOMER RESULTING FROM ANY INTERPRETATION MADE BY ANY OF OUR EMPLOYEES.

REMARKS

RUN 1 TRIP 1: CYOL COMPUTED USING 4.5" CASING (BVOL, CYOL UNITS IN CUBIC FEET)
CALIPER VERIFIED IN CASING

THANKS FOR USING BAKER ATLAS
CREW: MADLINGTON / BROWN
RIG: XTREME COIL #8

EQUIPMENT DATA

RUN	TRIP	TOOL	SERIES NO.	SERIAL NO.	POSITION
1	1	SWVL	3944KD	10154789	FREE
1	1	PWR ADAPTER	4430KB	10112786	FREE
1	1	TRM	3881KB	10084084	FREE
1	1	WTS	3514KB	153388	FREE
1	1	GR	1328KB	10040884	FREE
1	1	CN	2446SA	10202634	DECENT
1	1	ZDL	2228EA / MA	185088 / 118204	PAD DEVICE
1	1	KACN	3638A	185057	FREE

MAIN LOG 2"/100FT SCALE

ECLIPS 6.01 Feb 21, 2008
Patches: 1,2,3,4

Fri Sep 12 23:04:35 2008

Perplot /main/62

Cplot

Pdf_Cpp /main/16

Fileview 5.24

PARAMETER AND FILTER SUMMARY REPORT

File: /dat1a/523133/k874t04.prm
LOGGING MODE: DEPTH DIRECTION: UP
TOP DEPTH: 847.250 ft BOTTOM DEPTH: 6435.500 ft

SYMMETRIC FILTER

MEASUREMENT TYPE	PARAMETER	VALUE	UNITS	INTERVAL (ft)	
Y AXIS CALIPER	FILTER ()	medium (1)		TOP	BOTTOM
TENSION	FILTER ()	medium (1)		"	"
GR	FILTER ()	medium (1)		"	"

BOREHOLE & CEMENT

MEASUREMENT TYPE	PARAMETER	VALUE	UNITS	INTERVAL (ft)	
CASINO - BOREHOLE & CEMENT VOLUME	CASINO O.D.	4.500	1in	TOP	BOTTOM
BIT SIZE	BIT SIZE	7.875	1in	"	"

CURVE DESCRIPTION REPORT

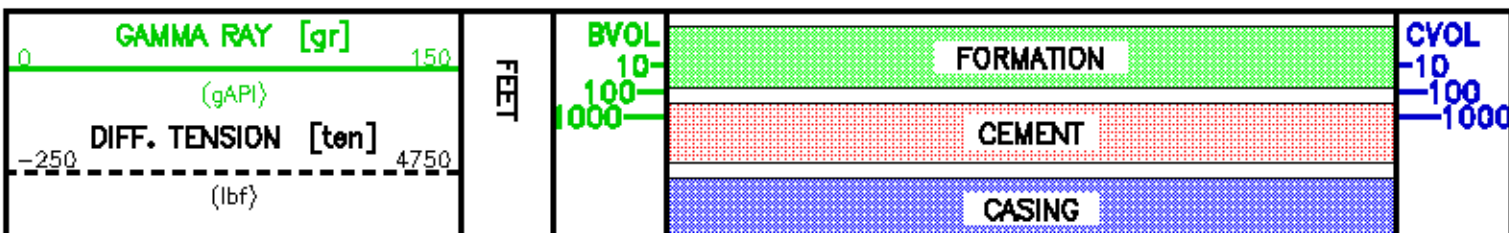
CURVE NAME	CURVE ALIAS	CREATION DATE	CURVE DESCRIPTION
F1:BIT	BIT	Sep 12 18:36:53 2008	BIT SIZE
F1:BVOL	BVOL	Sep 12 18:36:53 2008	BOREHOLE VOLUME
F1:CAL	CAL	Sep 12 18:36:53 2008	CALIPER
F1:CVOL	CVOL	Sep 12 18:36:53 2008	CEMENT VOLUME
F1:GR	GR	Sep 12 18:36:53 2008	GAMMA RAY
F1:TEN	TEN	Sep 12 18:36:53 2008	DIFFERENTIAL TENSION

CURVE MEASURE POINT OFFSET

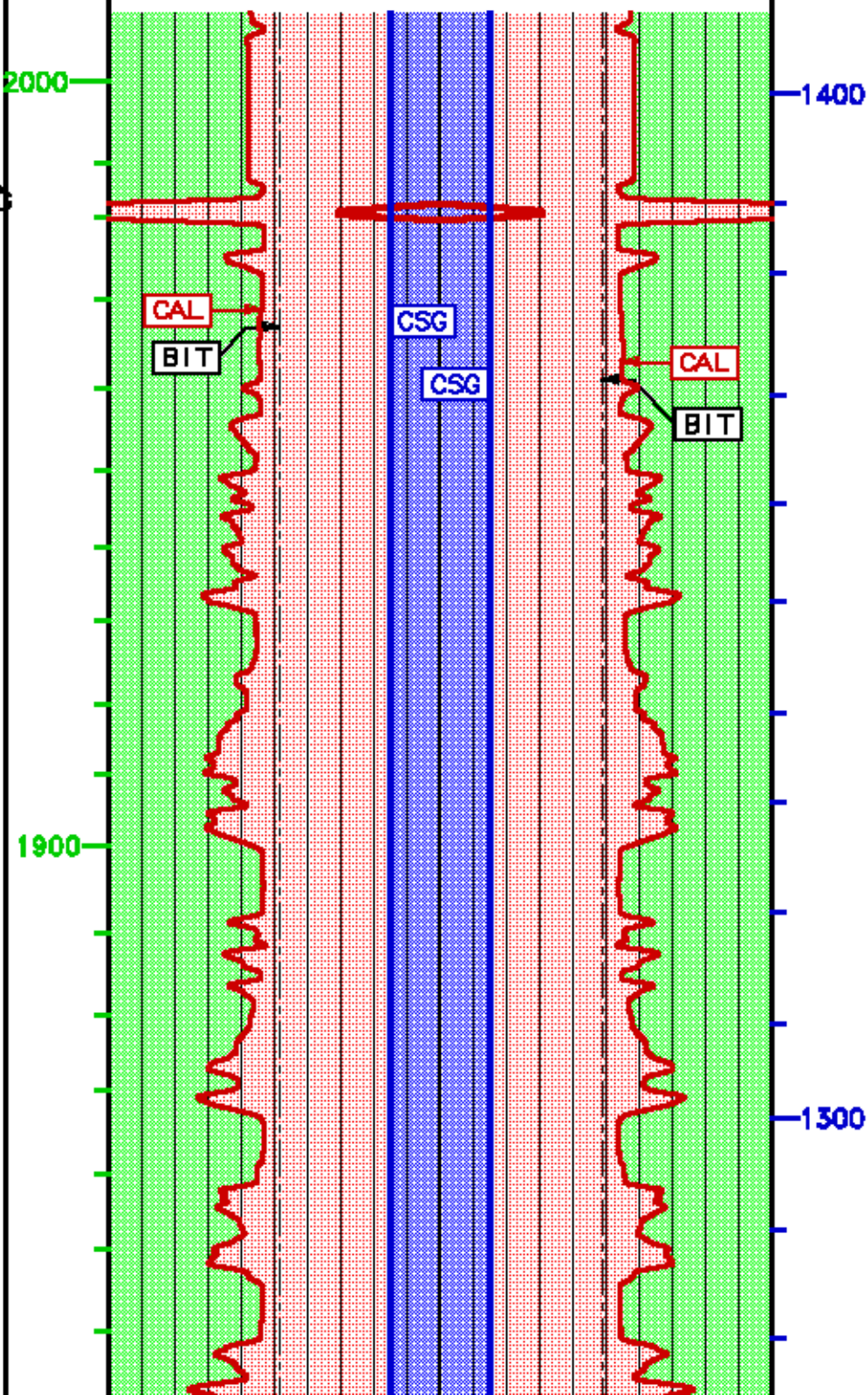
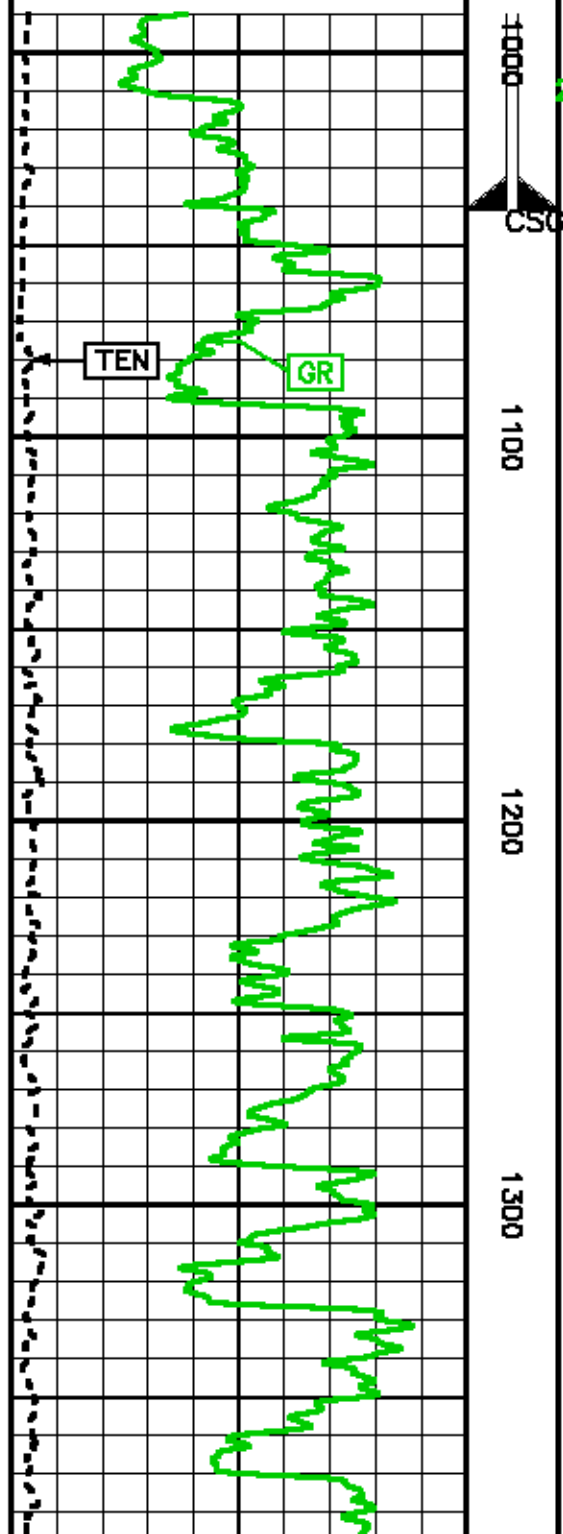
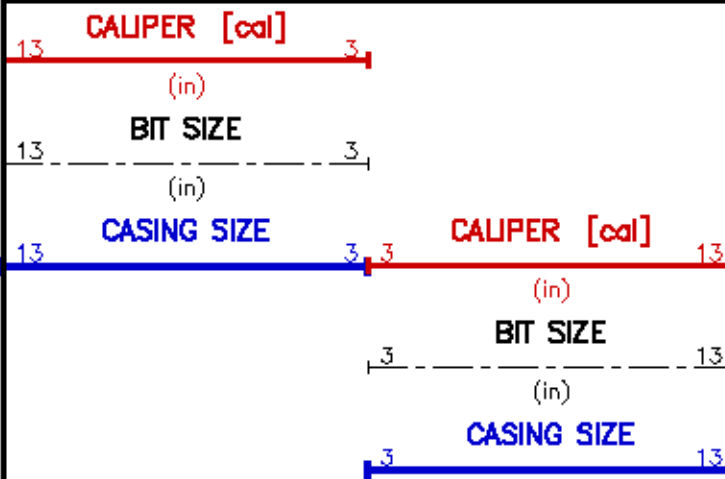
CURVE	OFFSET (ft)	CURVE	OFFSET (ft)	CURVE	OFFSET (ft)	CURVE	OFFSET (ft)
BIT	0.00	CAL	35.00	GR	59.50	TEN	0.00

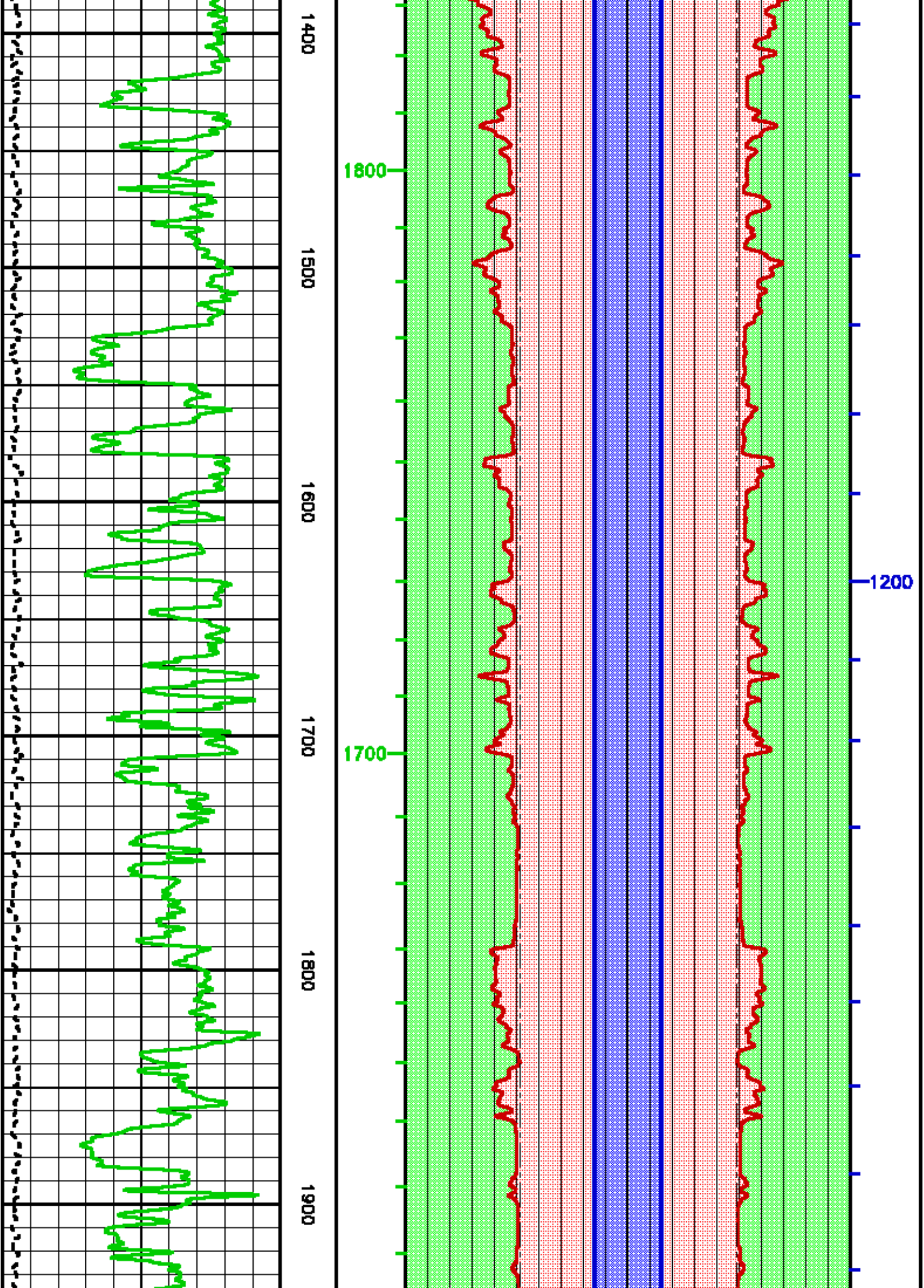
Presentation : opul:/dat1a/523133/BHP.pdf [2"/100' Scale]
Plot Interval : 990 - 6435.5 Feet

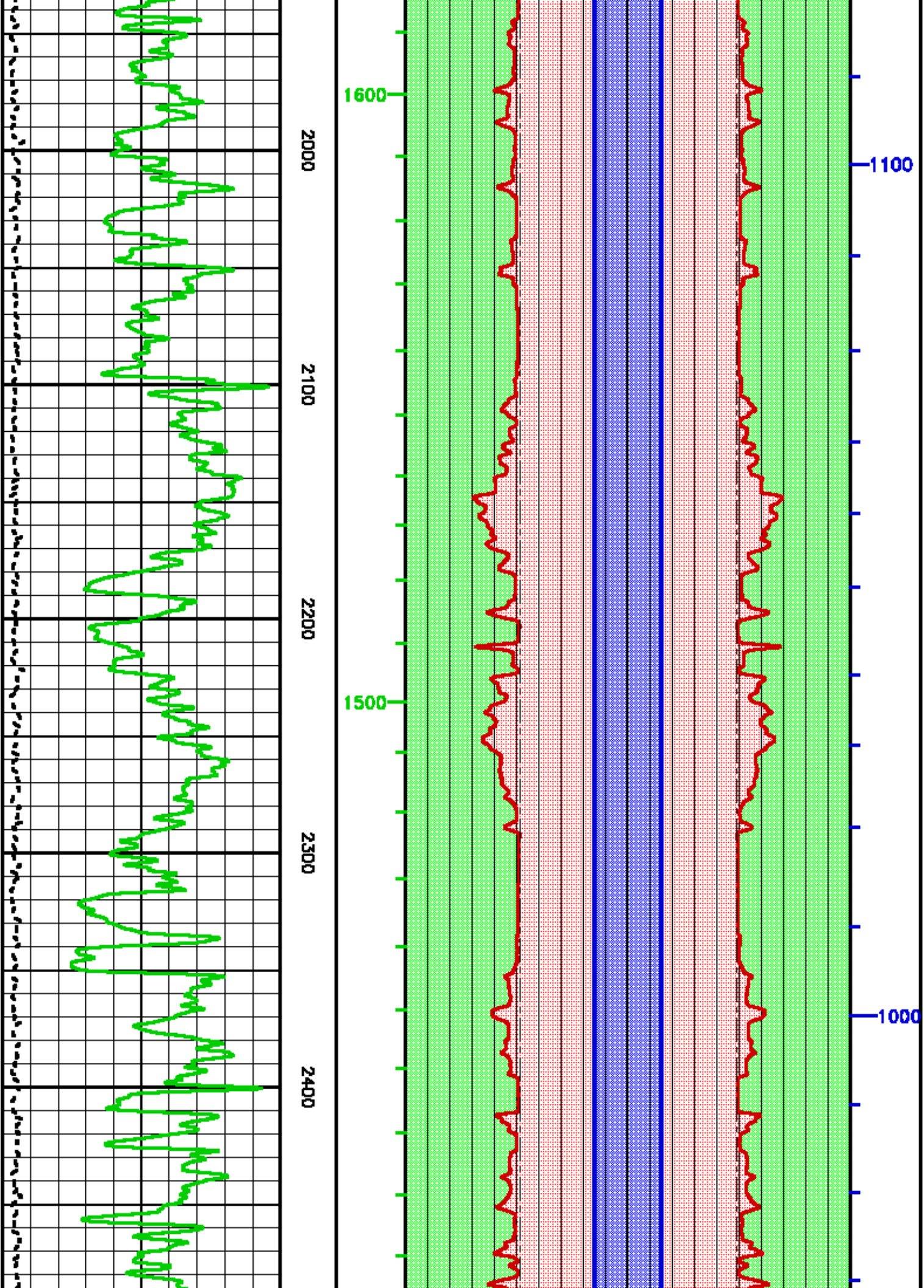
Data File 1 : F1 : opul:/dat1a/523133/k874t04.off
Created On : Sep 12 18:36:53 2008
Company : EMCANA OIL & GAS (USA), INC.
Well : EMCANA 11-382
Field : MAMM CREEK
File Interval : 874.5 - 6435.5 Feet
Out : k874t

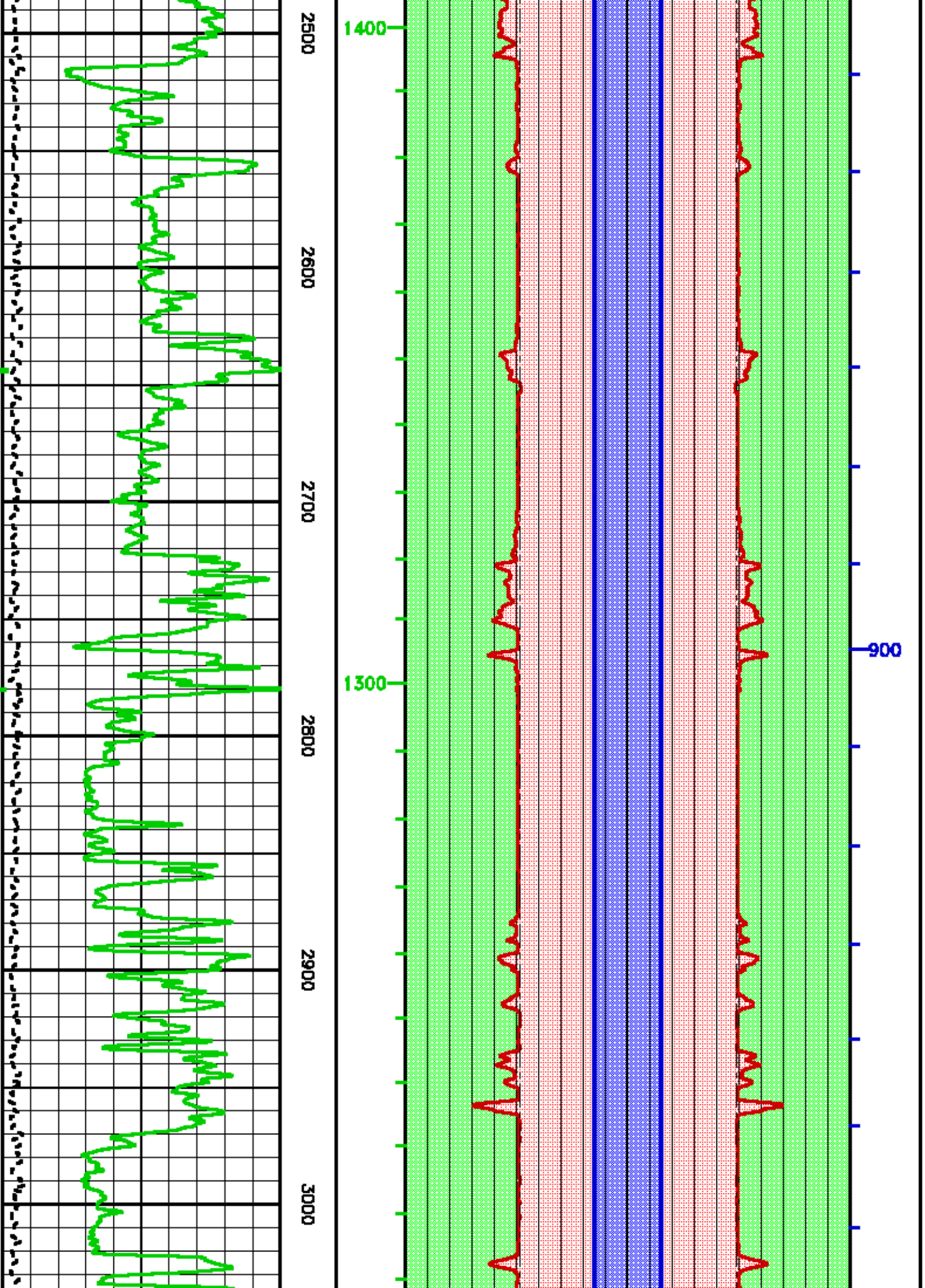


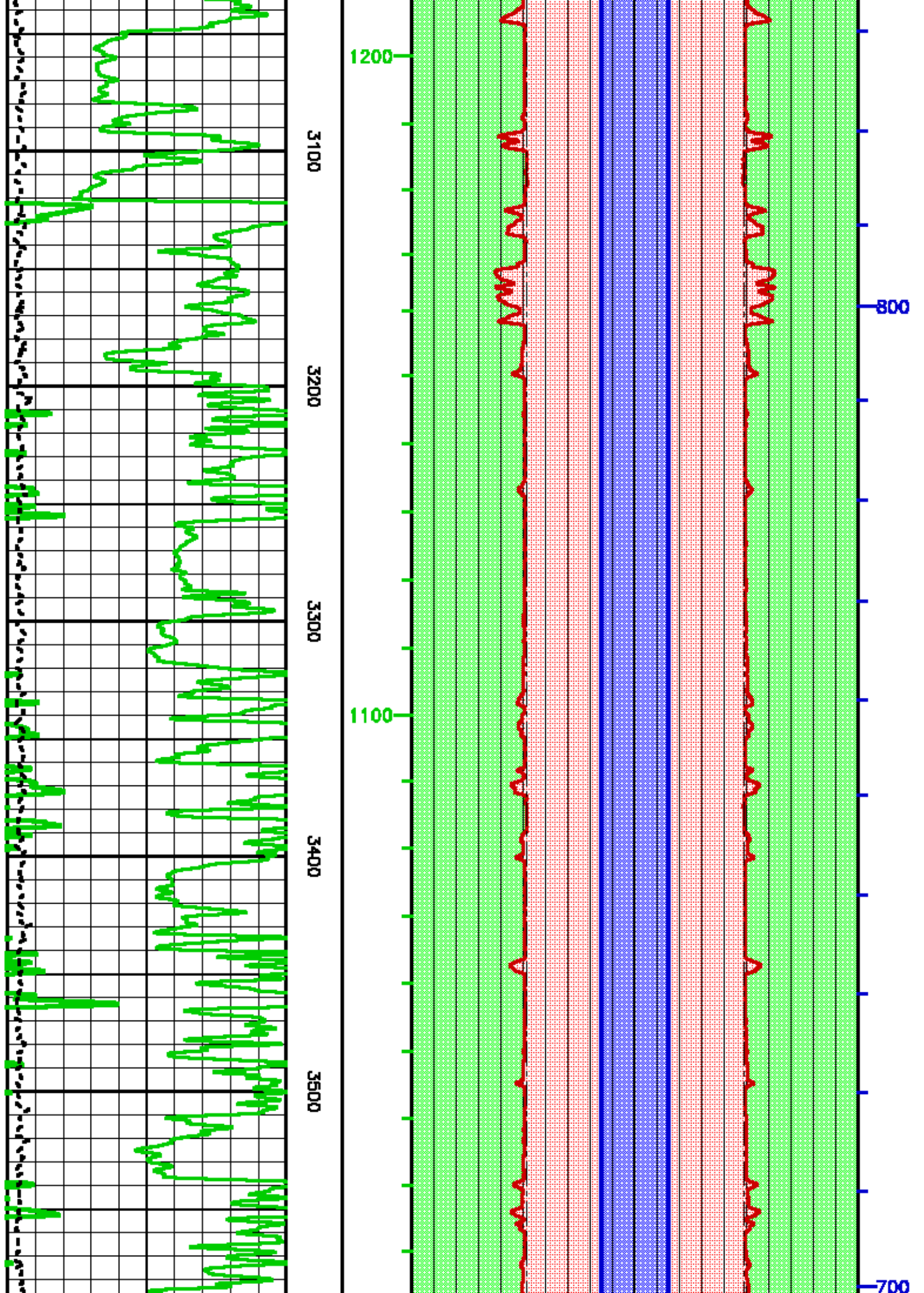
UNDER GAUGE

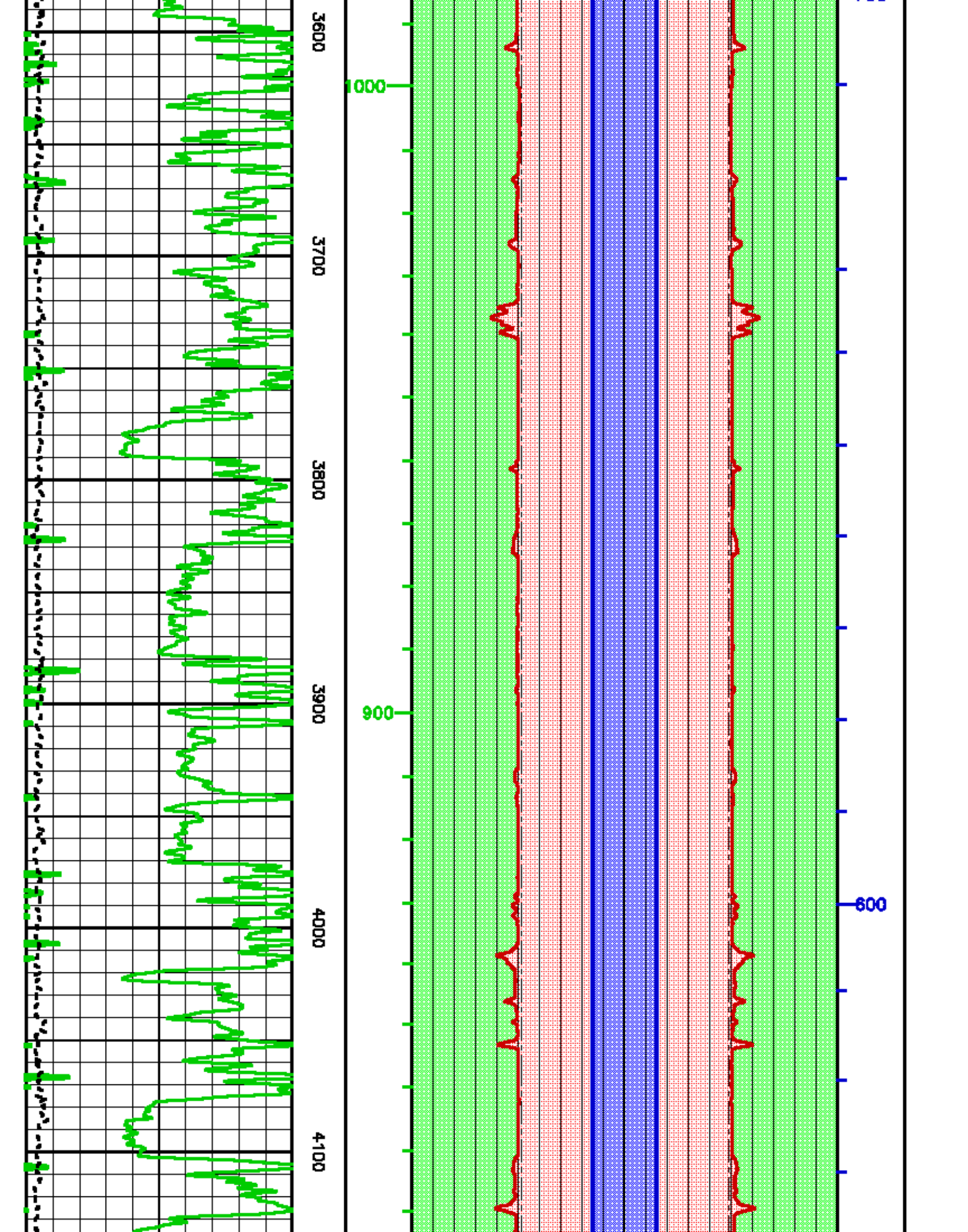


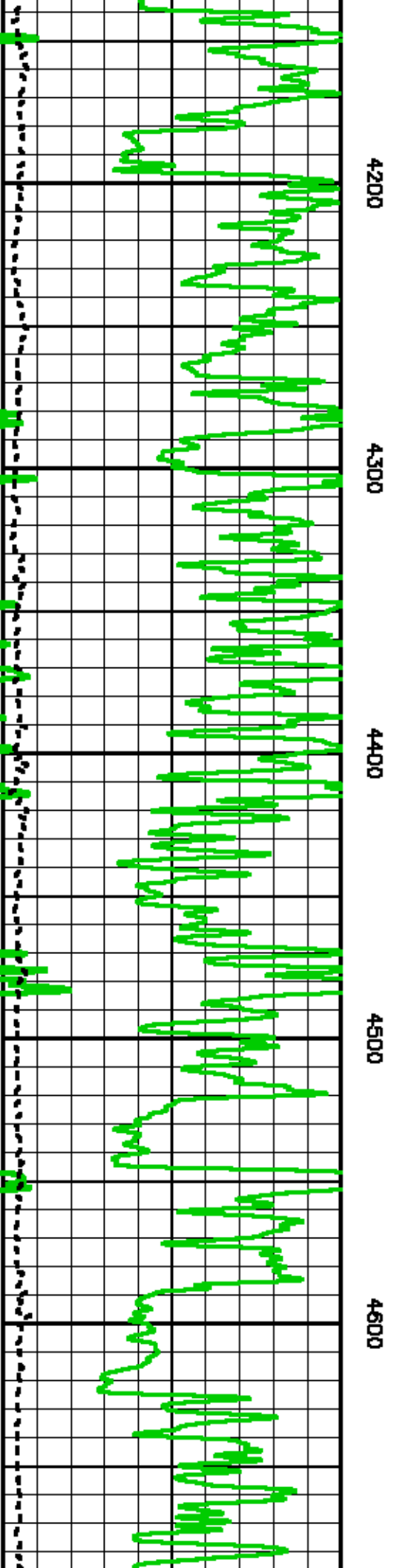
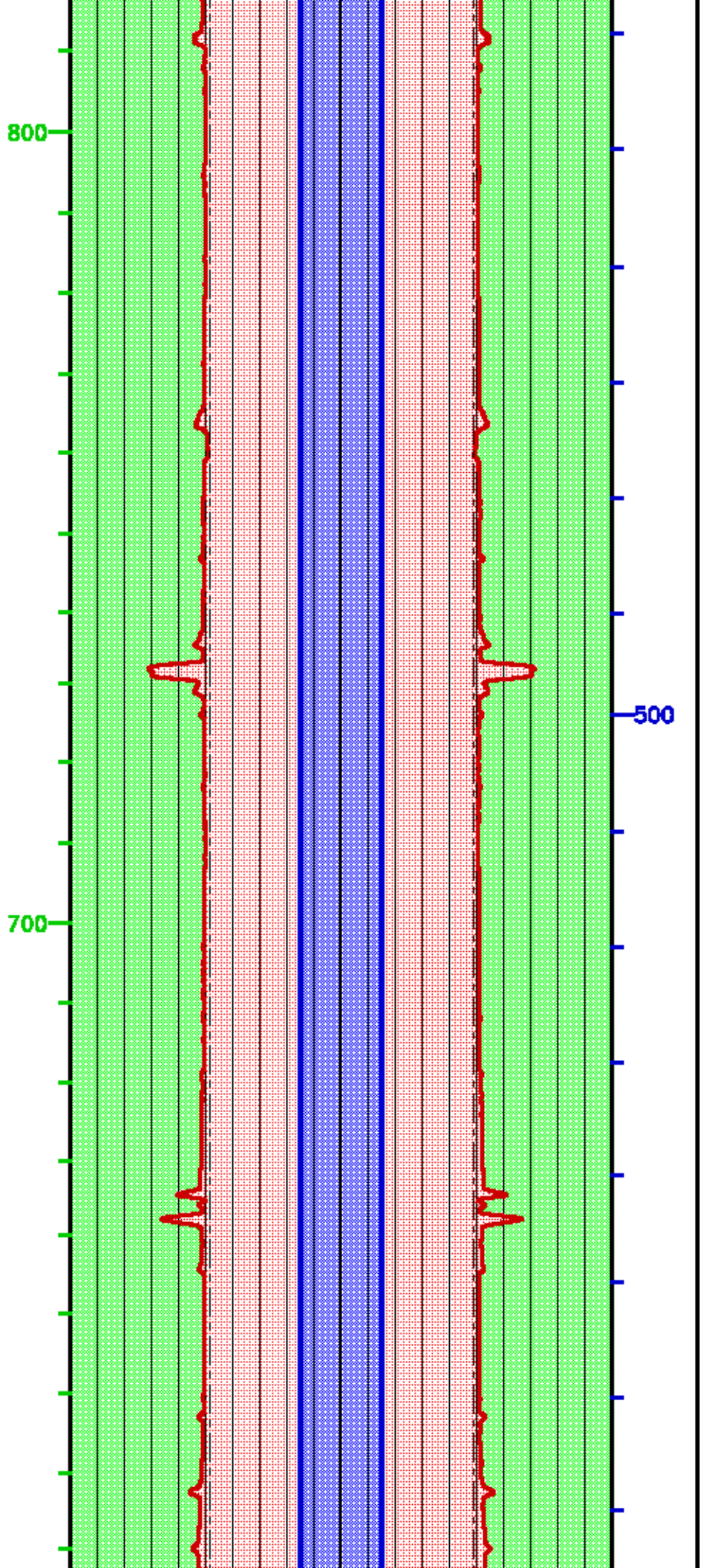


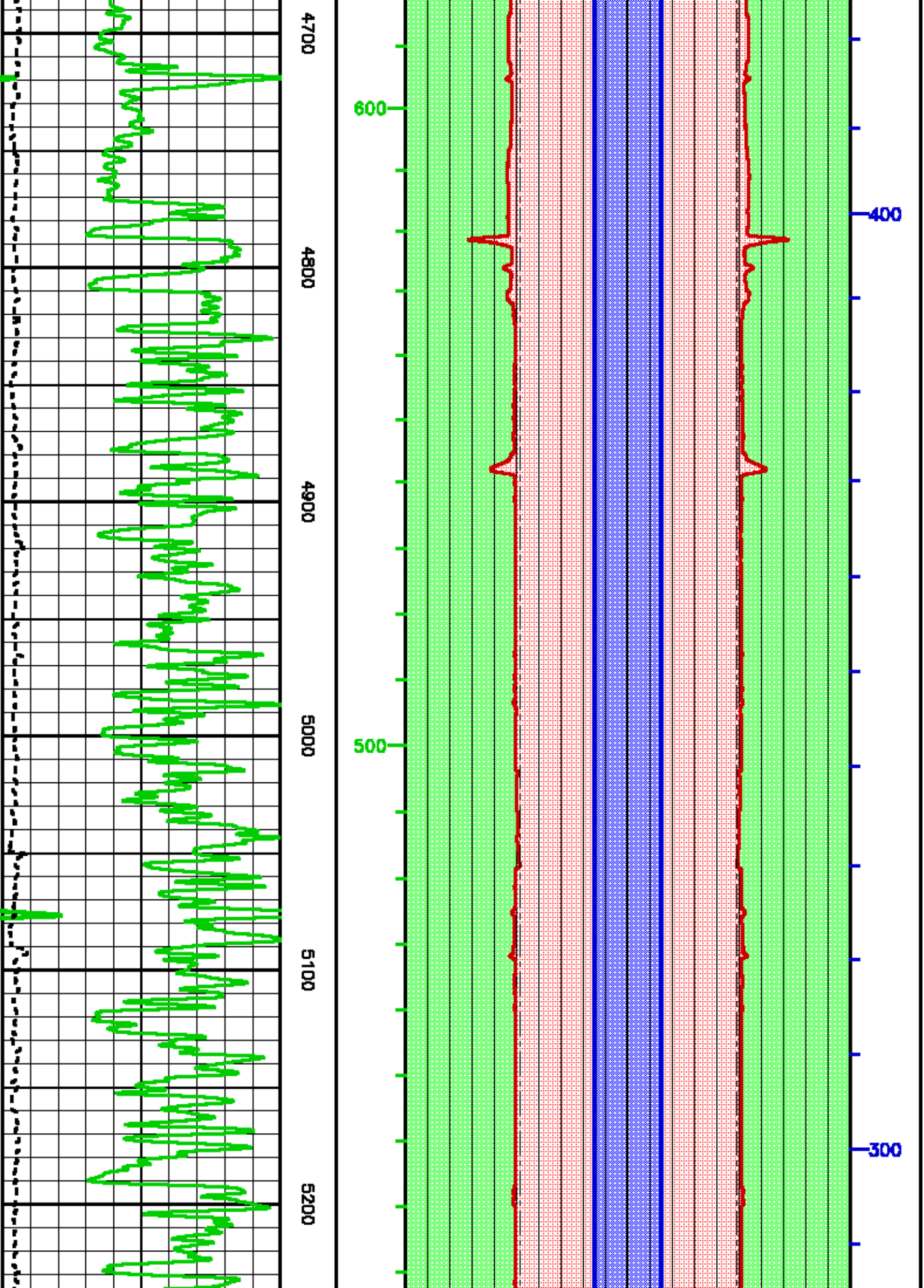


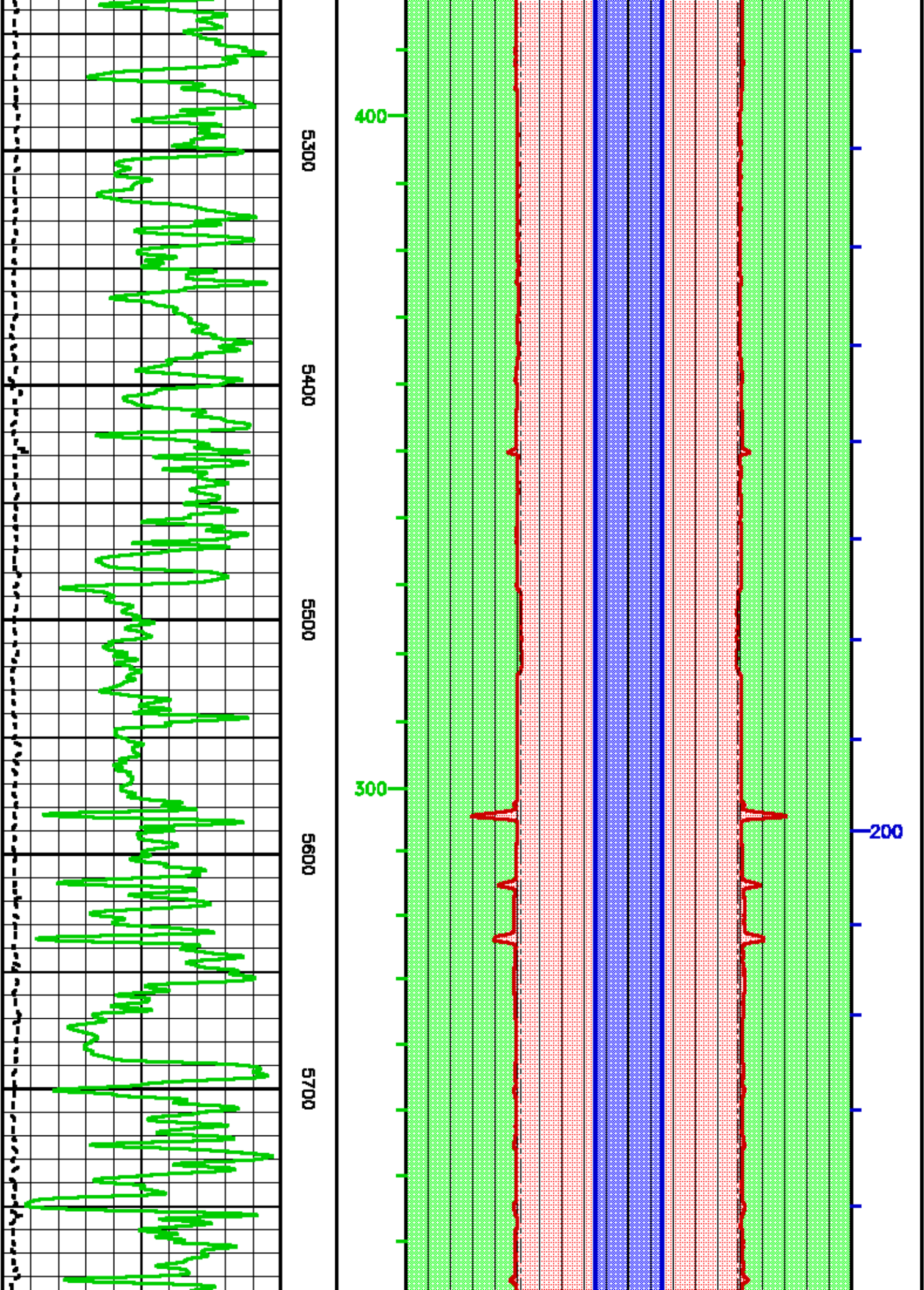


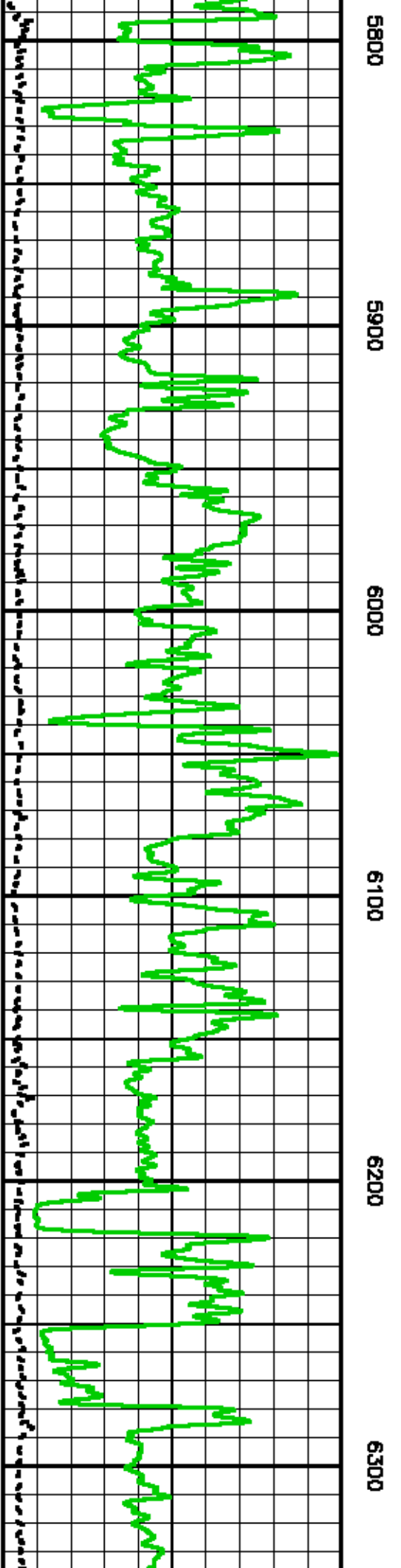
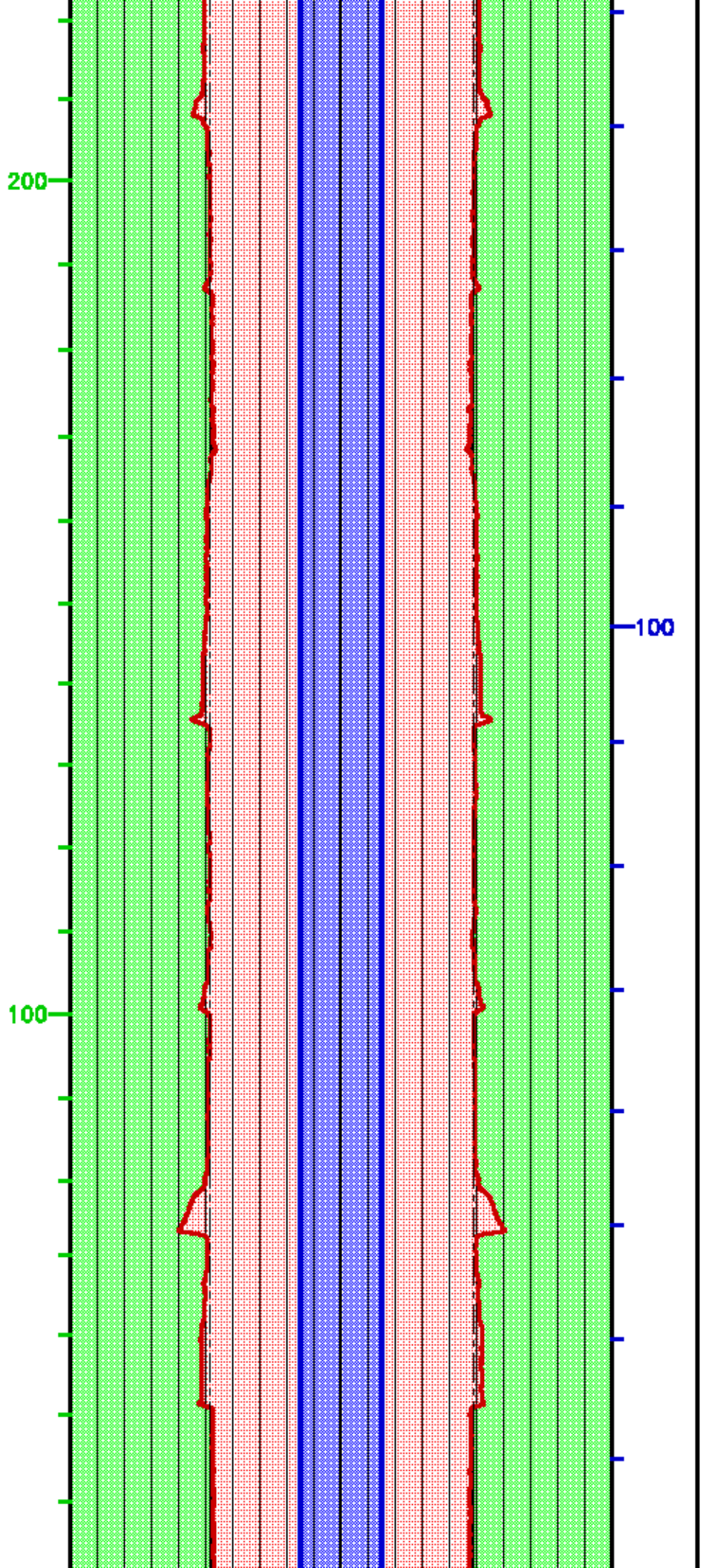


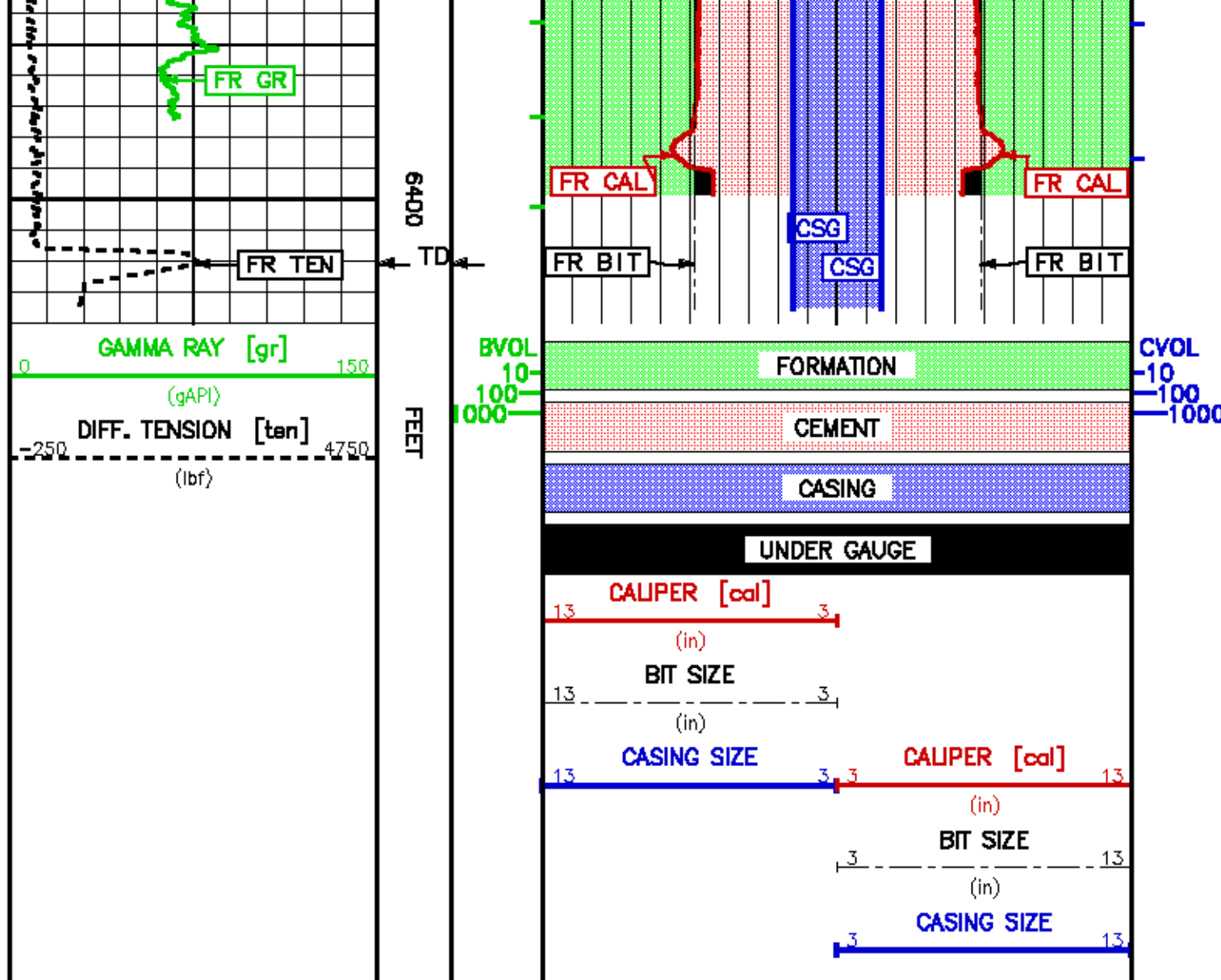














 Baker Atlas 	COMPANY <u>ENCANA OIL & GAS (USA), INC.</u> WELL <u>ENCANA 11-3B2</u> FIELD <u>WAMM CREEK</u> COUNTY <u>GARFIELD</u> STATE <u>COLORADO</u>	FILE NO: <u>5588</u> API NO: <u>05-045-148880000</u>
	LOCATION: SURFACE: 1646' FNL & 1488' FNL SE/NW BHL: 585' FNL & 1700' FNL NE/NW SEC <u>11</u> TWP <u>7S</u> RGE <u>92W</u>	ELEVATIONS: KB 6143 FT DF 6142 FT GL 6124 FT DATE <u>12-SEP-2008</u>