

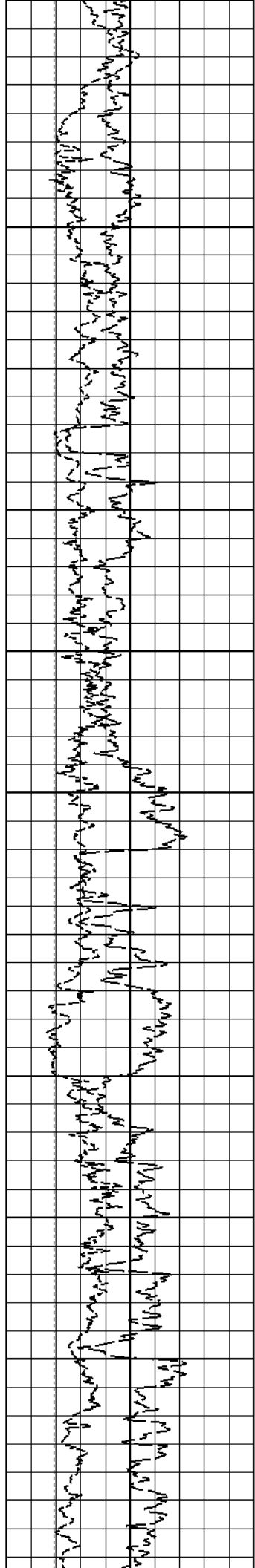
HALLIBURTON

BOREHOLE VOLUME

COMPANY				PLAINS EXPLORATION AND PRODUCTION CO.							
WELL				HAWKINS RANCH 10-8B							
FIELD				PLATEAU							
COUNTY				MESA							
STATE				CO							
Permanent Datum		GL		Sect. 10		Twp. 10S		Rge. 94W		Elev. 7336.0 ft	
Log measured from		KB		SURFACE : 2466' FSL & 1246' FEL		BOTTOM : 2144' FNL & 0663' FEL		D.F.		7360.0 ft	
Drilling measured from		KB		15.0 ft above perm. Datum				G.L.		7336.0 ft	
Date		01-Mar-08 15:28									
Run No.		ONE									
Depth - Driller		6640.0 ft									
Depth - Logger		6635.0 ft									
Bottom - Logged Interval		6612.0 ft									
Top - Logged Interval		1577.0 ft									
Casing - Driller		8.625 in		@ 1578.0 ft						@	
Casing - Logger		1577.0 ft									
Bit Size		7.875 in								@	
Type Fluid in Hole		LSND									
Density		9.9 ppg		42.00 s/qt							
PH		10.00 pH		6.5 cpm							
Source of Sample		MUD TANK									
Rm @ Meas. Temperature		1.98 ohmm		@ 73.10 degF						@	
Rmf @ Meas. Temperature		1.63 ohmm		@ 78.00 degF						@	
Rmc @ Meas. Temperature		2.32 ohmm		@ 78.20 degF						@	
Source Rmf		Rmc		MEAS.						@	
Rm @ BHT		0.95 ohmm		@ 159.0 degF						@	
Time Since Circulation		8.8 hr									
Time on Bottom		01-Mar-08 17:15									
Max. Rec. Temperature		159.0 degF		@ 6635.0 ft						@	
Equipment		Location		11014853		G.J.					
Recorded By		M. CARPENTER								J. GEISER	
Witnessed By		D. VANHOUTEN									

Fold here

Service Ticket No.: 5716500				API Serial No.: 050770948500				PGM Version: WL INSITE R2.0 (Build 22)											
CHANGE IN MUD TYPE OR ADDITIONAL SAMPLE						RESISTIVITY SCALE CHANGES													
Date		Sample No.				Type Log		Depth		Scale Up Hole		Scale Down Hole							
Depth-Driller																			
Type Fluid in Hole																			
Density		Viscosity																	
Ph		Fluid Loss																	
Source of Sample						RESISTIVITY EQUIPMENT DATA													
Rm @ Meas. Temp		@		@		Run No.		Tool Type & No.		Pad Type		Tool Pos.		Other					
Rmf @ Meas. Temp.		@		@		ONE		ACRt-90144319		N/A		N/A		N/A					
Rmc @ Meas. Temp.		@		@				e554-s481											
Source Rmf		Rmc		CALC.		CALC.													
Rm @ BHT		0.95 ohmm		@ 159.00 degF		@													
Rmf @ BHT		0.84 ohmm		@ 159.00 degF		@													
Rmc @ BHT		1.19 ohmm		@ 159.00 degF		@													
EQUIPMENT DATA																			
GAMMA				ACOUSTIC				DENSITY				NEUTRON							
Run No.		ONE		Run No.				Run No.		ONE		Run No.		ONE					
Serial No.		11005602		Serial No.				Serial No.		10951314		Serial No.		10993888					
Model No.		GTET		Model No.				Model No.		SDLT		Model No.		DSNT					
Diameter		3.625"		No. of Cent.				Diameter		4.5"		Diameter		3.625"					
Detector Model No.		GTET		Spacing				Log Type		GAMMA-GAMMA		Log Type		THERMAL					
Type		SCINT.						Source Type		Cs137		Source Type		Am241Be					
Length		8"		LSA [Y/N]				Serial No.		5123GW		Serial No.		DSN-388					
Distance to Source		10"		FWDA [Y/N]				Strength		1.5 Ci		Strength		18.5 Ci					
LOGGING DATA																			
GENERAL				GAMMA				ACOUSTIC				DENSITY				NEUTRON			



1800

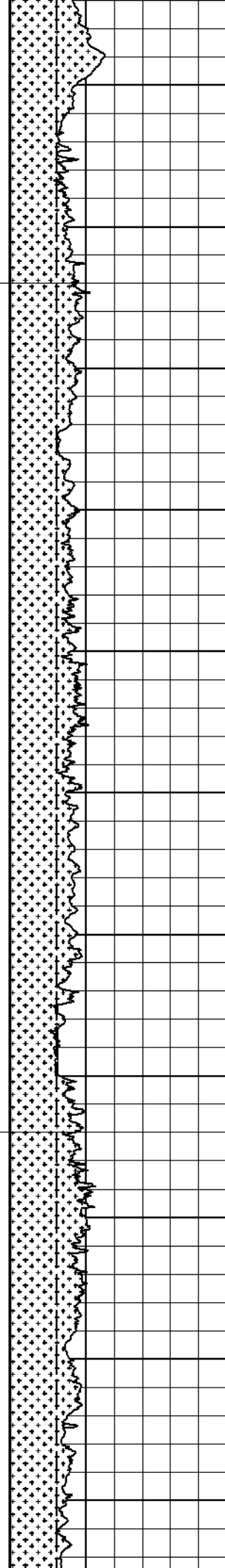
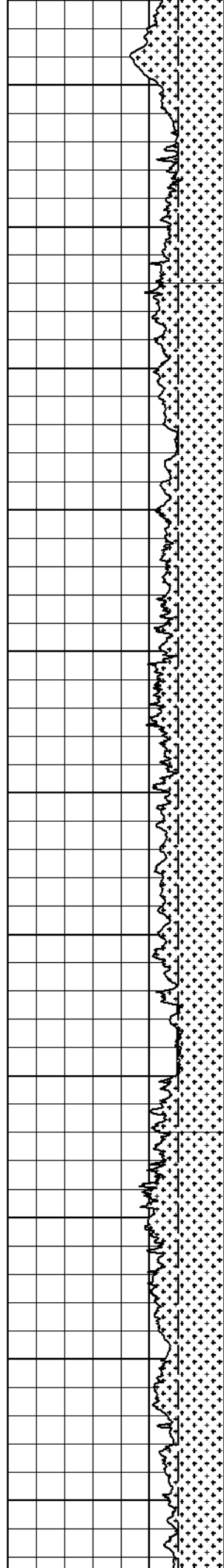
1900

2000

2100

2200

2300



1749

1729

1707

1686

1664

1642

1620

1600

1577

1552

1531

1214

1199

1182

1167

1151

1134

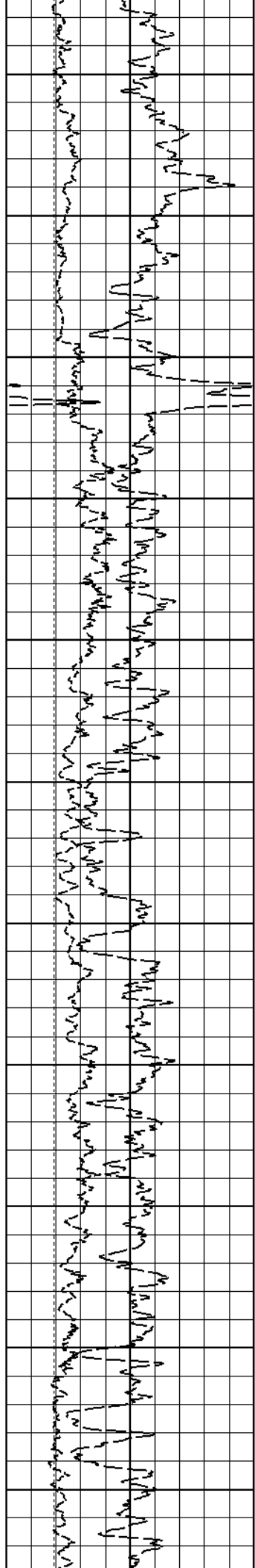
1118

1104

1086

1067

1051



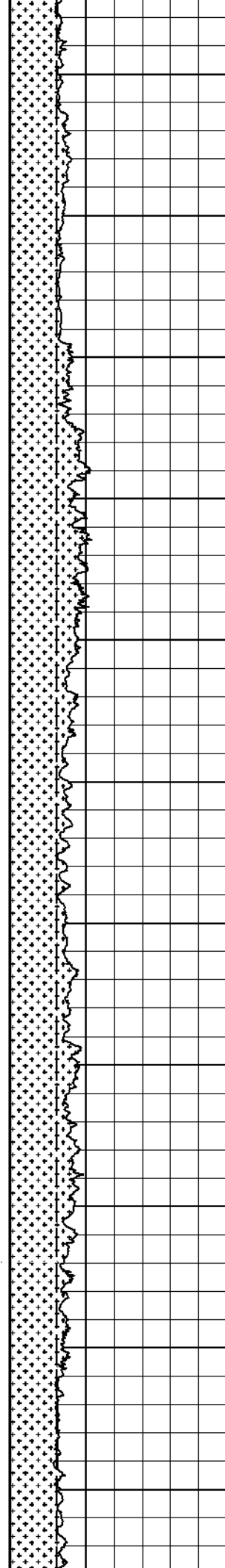
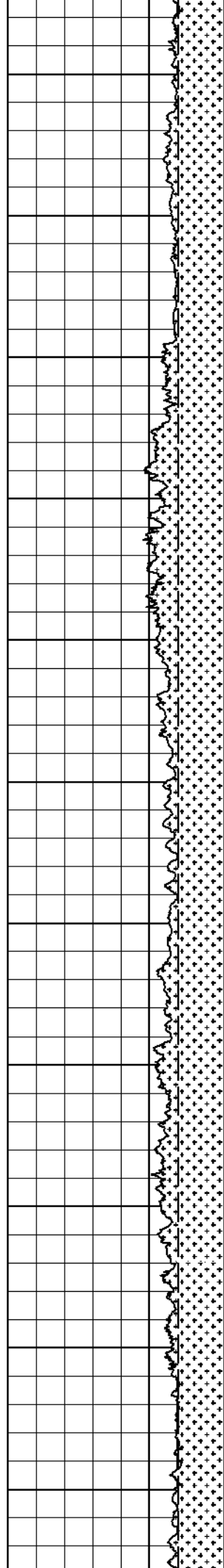
2400

2500

2600

2700

2800



1512

1038

1493

1024

1475

1011

1452

994

1427

975

1406

959

1386

945

1365

929

1343

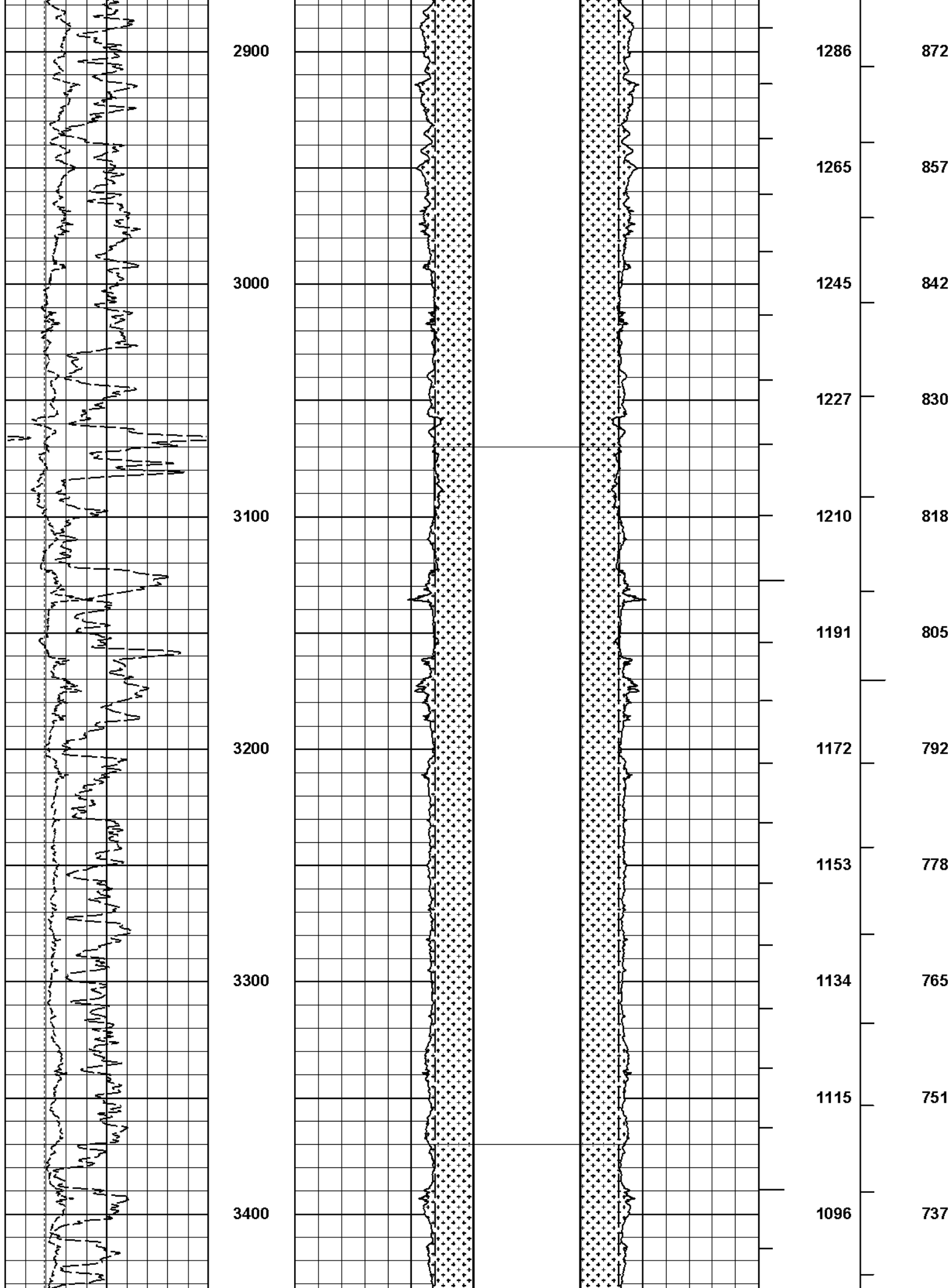
913

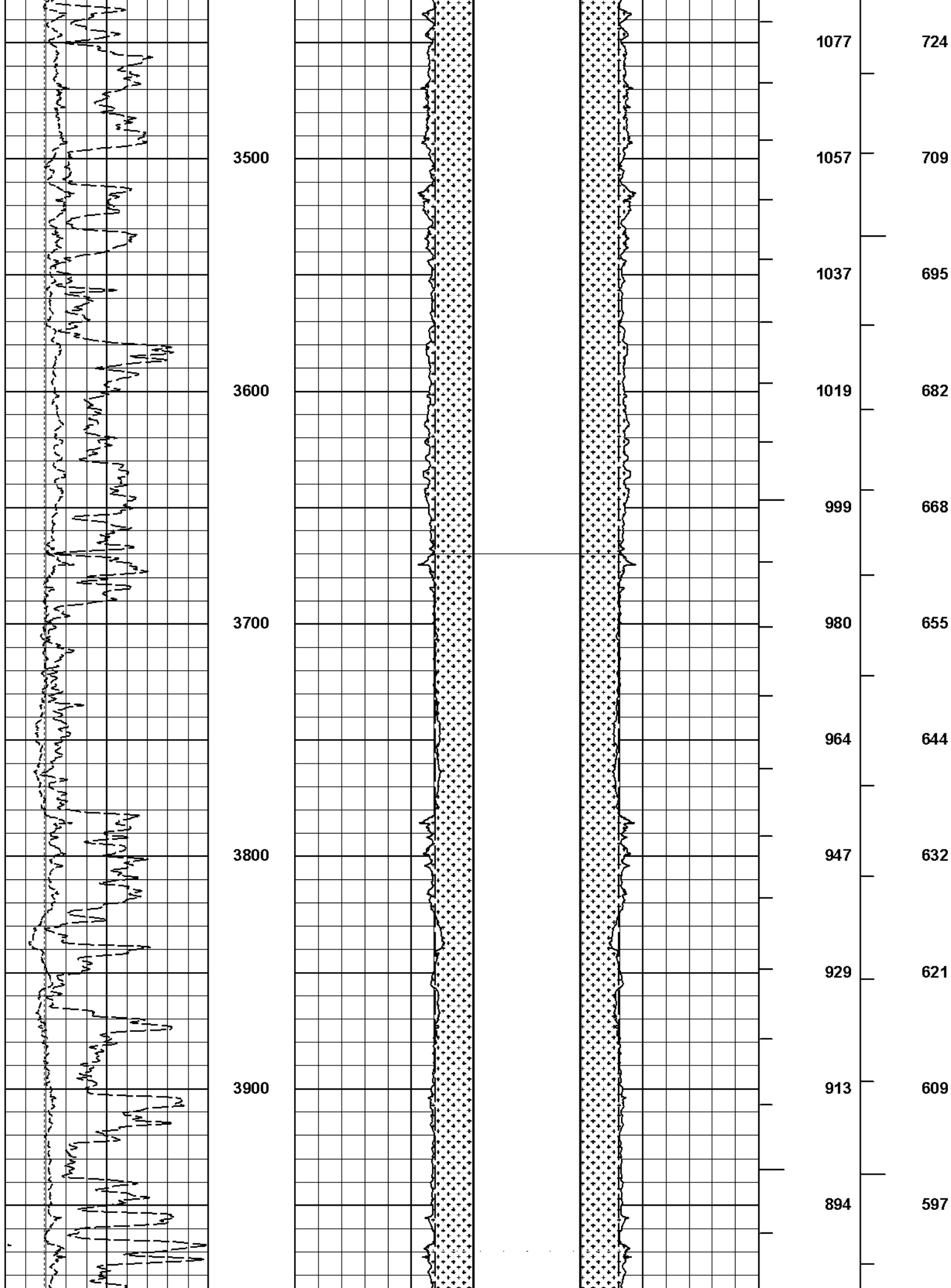
1323

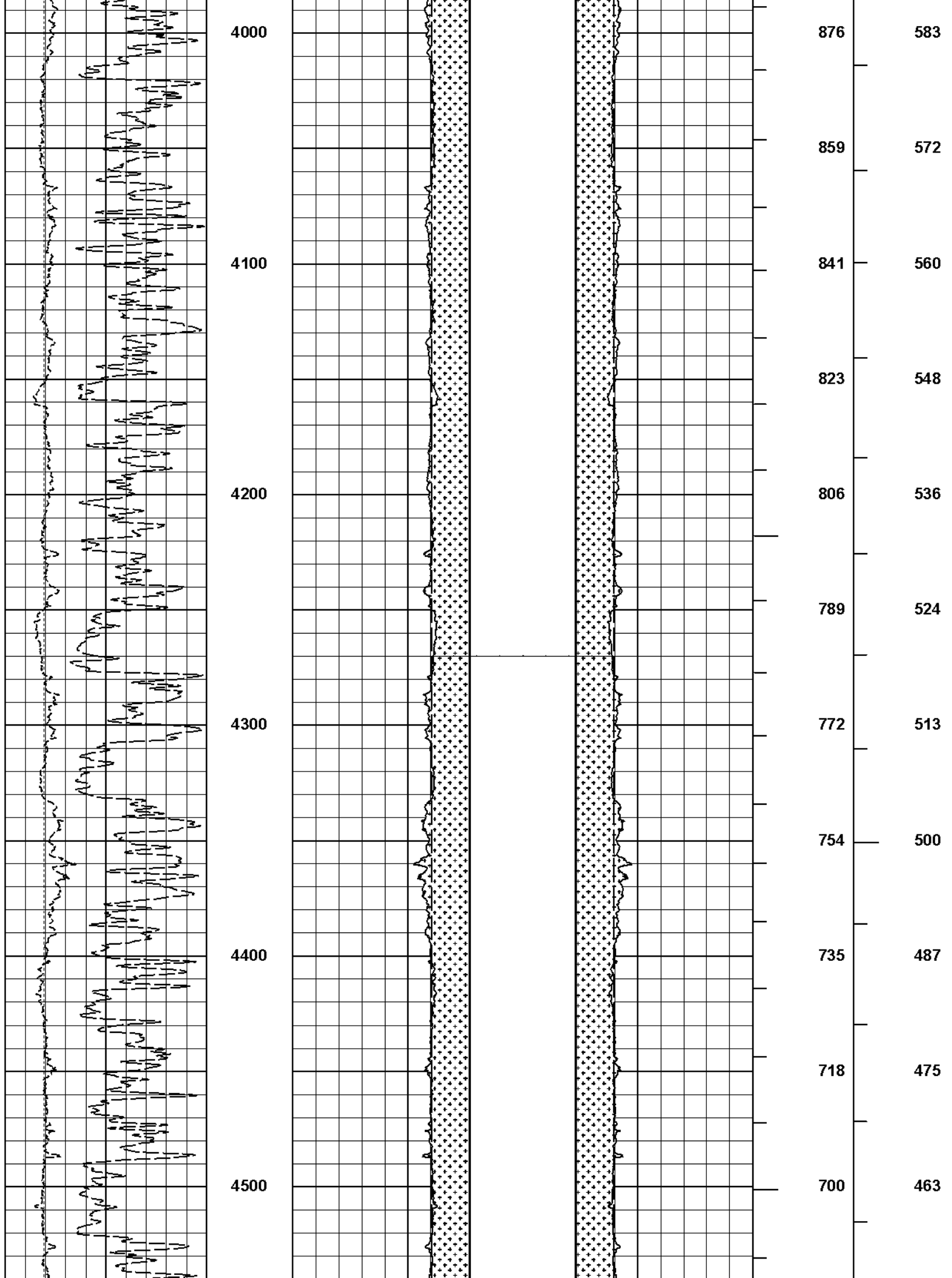
898

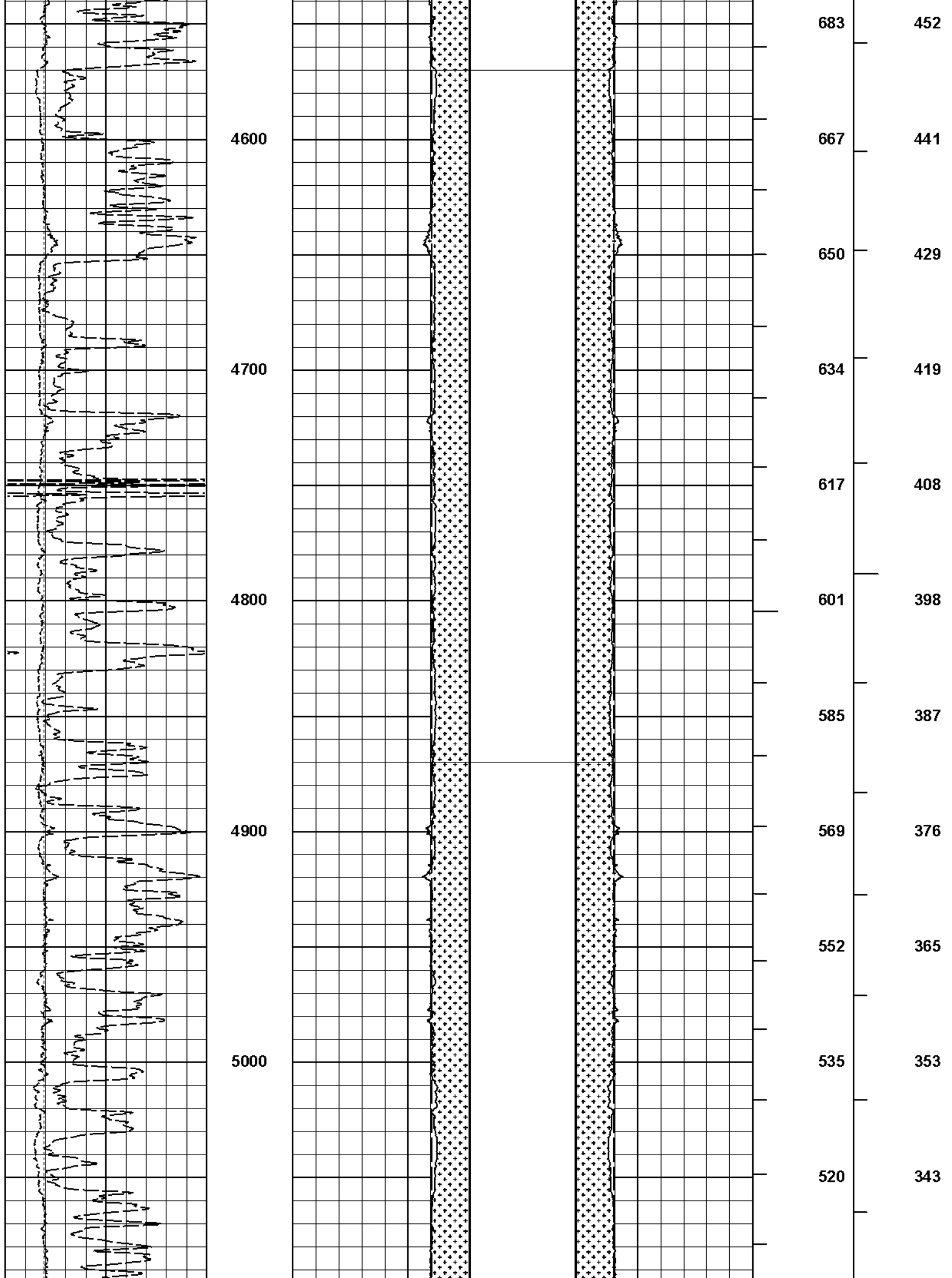
1305

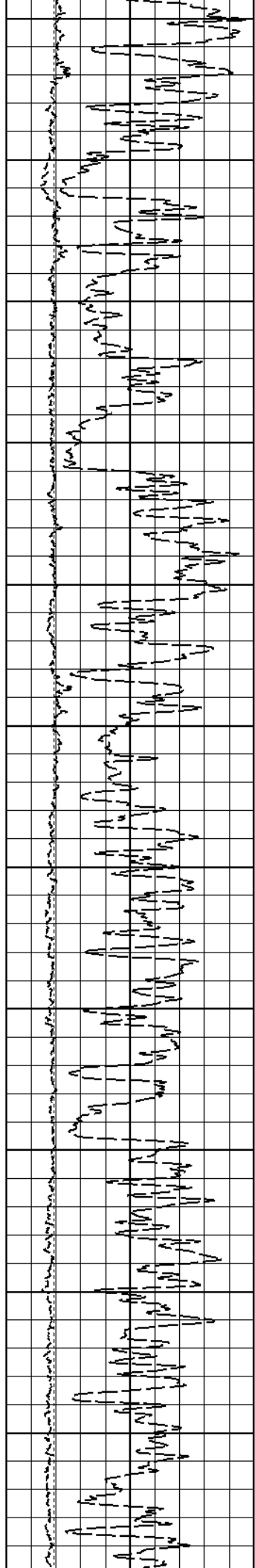
886











5100

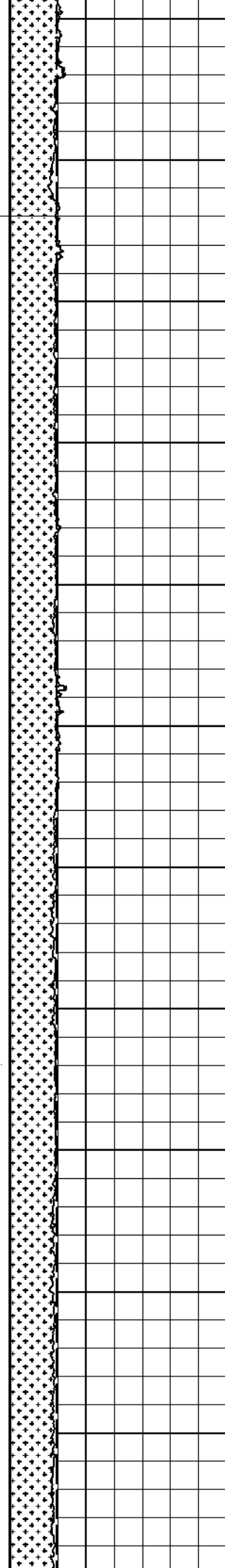
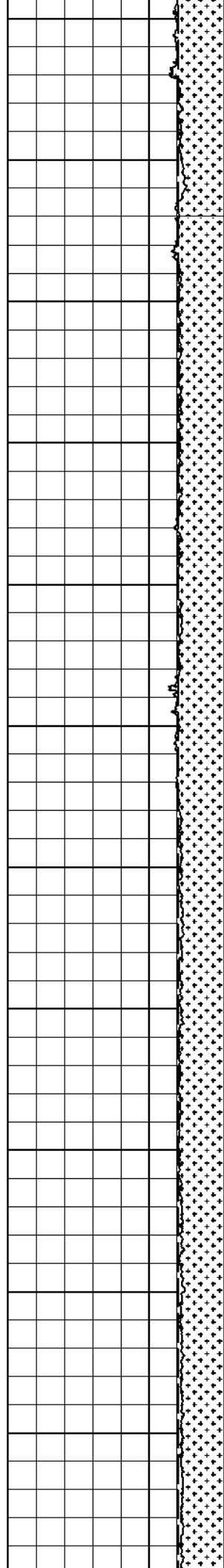
5200

5300

5400

5500

5600



503

486

469

452

436

419

402

386

369

353

337

332

320

309

298

287

276

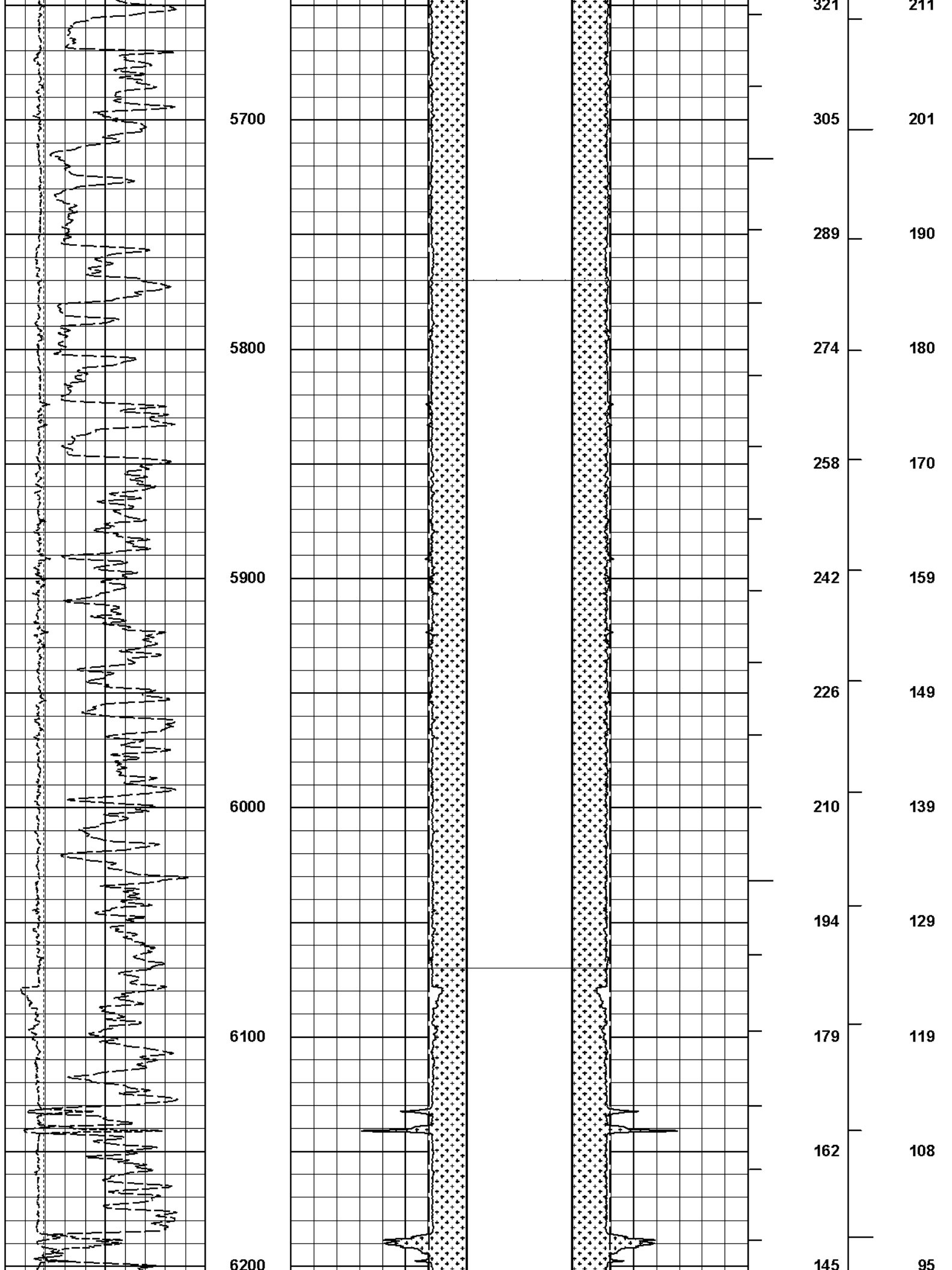
264

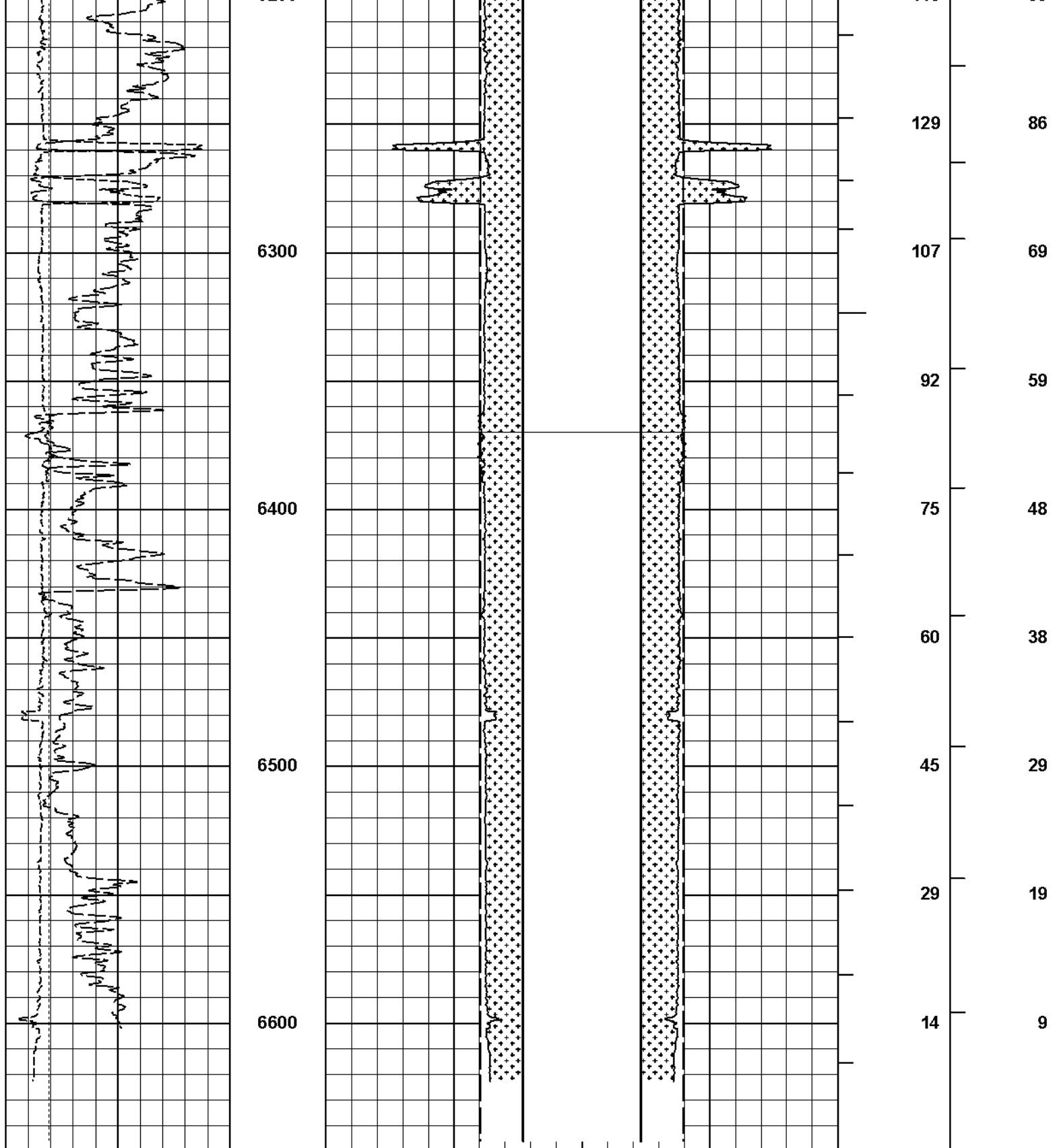
254

243

232

222





0	Gamma Ray	200	MD 1 : 600 ft	20	Caliper Left	0 0	20	Caliper Right	20	BHVT	AHVT
	api				inches			inches			
6	Bit Size	16		20	Bit Size Left	0 0	20	Bit Size Right	20		
	inches				inches			inches			
6	Caliper	16		20	Casing OD	0 0	20	Casing OD	20		
	inches				inches			inches			

HALLIBURTON

Plot Time: 01-Mar-08 19:30:25
Plot Range: 1570 ft to 6650 ft
Data: PXP_HR_10_8BIWell Based(VOLUME)
Plot File: WPMPLM_10

COMPANY	PLAINS EXPLORATION AND PRODUCTION CO.		
WELL	HAWKINS RANCH 10-8B		
FIELD	PLATEAU		
COUNTY	MESA	STATE	CO

HALLIBURTON

BOREHOLE VOLUME