

Company: Rosetta Resources Operating, LP

Well: FIX 2-7

Field: WILDCAT

County: YUMA

State: COLORADO

CEMENT BOND
GAMMA RAY CCL LOG

County: YUMA
Field: WILDCAT
Location: SWNE
Well: FIX 2-7
Company: Rosetta Resources Operating, LP

LOCATION			
SWNE 1756' FNL x 2039' FEL		Elev.: K.B. 3911 ft G.L. 3899 ft D.F. 3910 ft	
Permanent Datum:	GROUND LEVEL	Elev.: 3899 ft	
Log Measured From:	KELLY BUSHING	12.0 ft above Perm. Datum	
Drilling Measured From:	KELLY BUSHING		
API Serial No. 05-125-11152-000C		Section 2	Township 1S Range 45W

PVT DATA			
Oil Density	Run 1	Run 2	Run 3
Water Salinity			
Gas Gravity			
Bo			
Bw			
1/Bg			
Bubble Point Pressure			
Bubble Point Temperature			
Solution GOR			
Maximum Deviation			
CEMENTING DATA			
Primary/Squeeze	Primary		
Casing String No			
Lead Cement Type			
Volume			
Density			
Water Loss			
Additives			
Tail Cement Type			
Volume			
Density			
Water Loss			
Additives			
Expected Cement Top			

Logging Date 29-May-2008

Run Number 1

Depth Driller 2550 ft

Schlumberger Depth 2514 ft

Bottom Log Interval 2514 ft

Top Log Interval 1190 ft

Casing Fluid Type WATER

Salinity

Density

Fluid Level 0 ft

BIT/CASING/TUBING STRING

Bit Size 6.250 in

From

To

Casing/Tubing Size 4.500 in

Weight 10.5 lbm/ft

Grade

From

To

Maximum Recorded Temperatures 118 degF

Logger On Bottom 29-May-2008

Unit Number 318 Location FT MORGAN CO

Recorded By SAM HOPPER

Witnessed By JOHN ABBOTT

THE USE OF AND RELIANCE UPON THIS RECORDED-DATA BY THE HEREIN NAMED COMPANY (AND ANY OF ITS AFFILIATES, PARTNERS, REPRESENTATIVES, AGENTS, CONSULTANTS AND EMPLOYEES) IS SUBJECT TO THE TERMS AND CONDITIONS AGREED UPON BETWEEN SCHLUMBERGER AND THE COMPANY, INCLUDING: (a) RESTRICTIONS ON USE OF THE RECORDED-DATA; (b) DISCLAIMERS AND WAIVERS OF WARRANTIES AND REPRESENTATIONS REGARDING COMPANY'S USE OF AND RELIANCE UPON THE RECORDED-DATA; AND (c) CUSTOMER'S FULL AND SOLE RESPONSIBILITY FOR ANY INFERENCE DRAWN OR DECISION MADE IN CONNECTION WITH THE USE OF THIS RECORDED-DATA.

```
OS1:  MAST
OS2:  PERF
OS3:
OS4:
OS5:
```

OS1:
OS2:
OS3:
OS4:
OS5:

DEPTH REF TO PEX LOG OF 15-MAY-2008 SWS

REMARKS: RUN NUMBER 2

3.13 HEGS 16.1gm, 0.45eh, 18.5 pene, 120deg

Crew: Sam Hopper & Kenan Noe

THANK YOU FOR CHOOSING SCHLUMBERGER!

RUN 1

SERVICE ORDER #: 12062974
PROGRAM VERSION: 15C0-309
FLUID LEVEL: 0 ft

LOGGED INTERVAL

START

STOP

RUN 2

SERVICE ORDER #:
PROGRAM VERSION:
FLUID LEVEL:

LOGGED INTERVAL

START

STOP

RUN 1

SURFACE EQUIPMENT

RUN 2

WITM-A

DOWNHOLE EQUIPMENT

MH-22
MH-22

29.8

Detail MT
TelStatus
CTEM

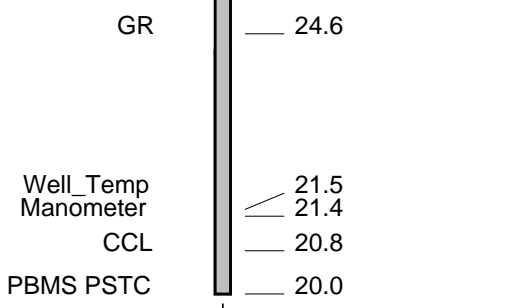
28.3

28.3

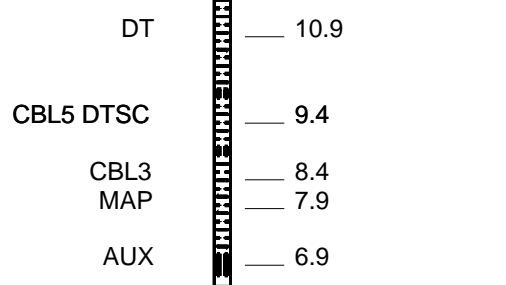
PSPT-A/B

PSC-A
PSC-T A 183C

PSP1-A 1876
PSTC
PBMS-A
10k_Sapphire_Mano
RTD_Thermometer
GR
CCL
PBMS



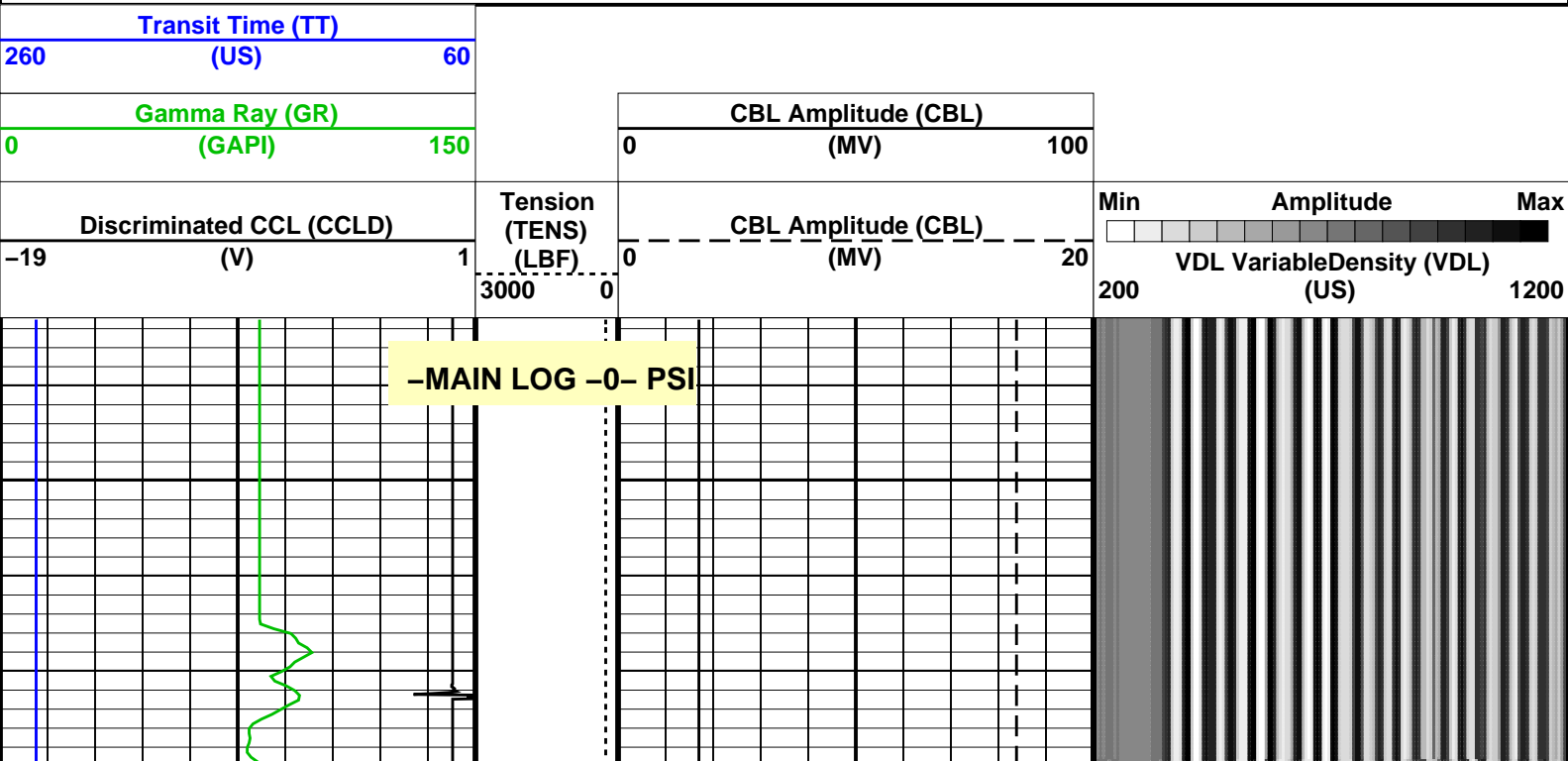
SCMT-CB
SCMC-CA 8212
SECH-CA 8210
CMIR-AG
SCMS-CB 8252
SCMX-CA 8212

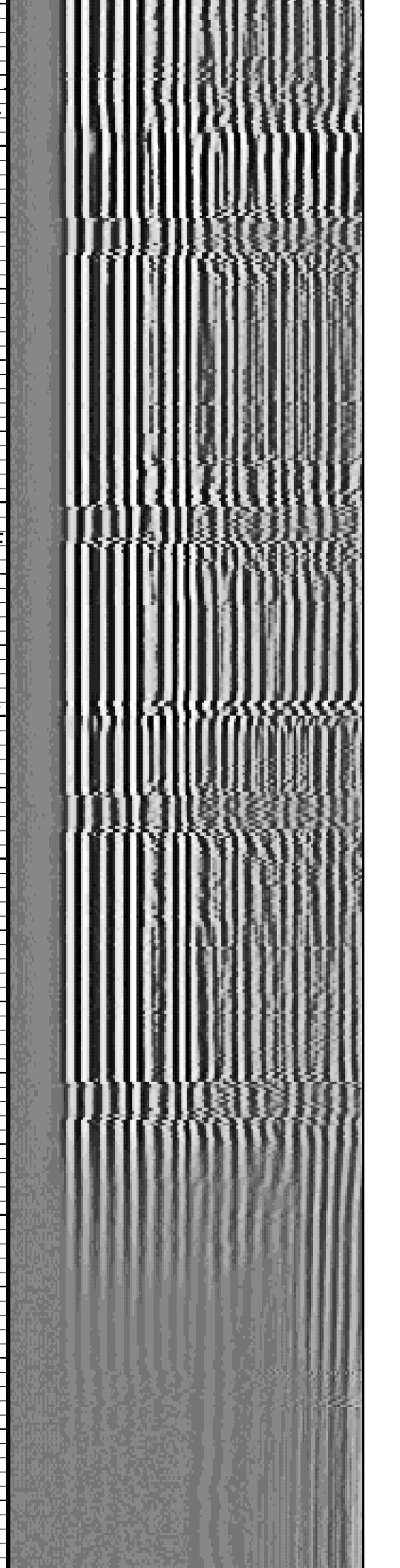
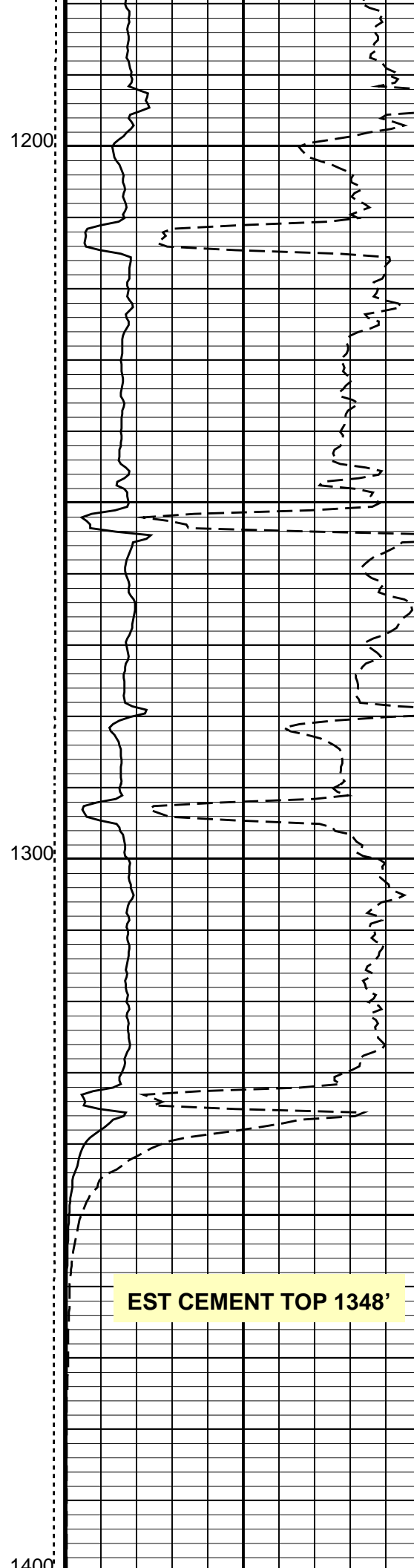
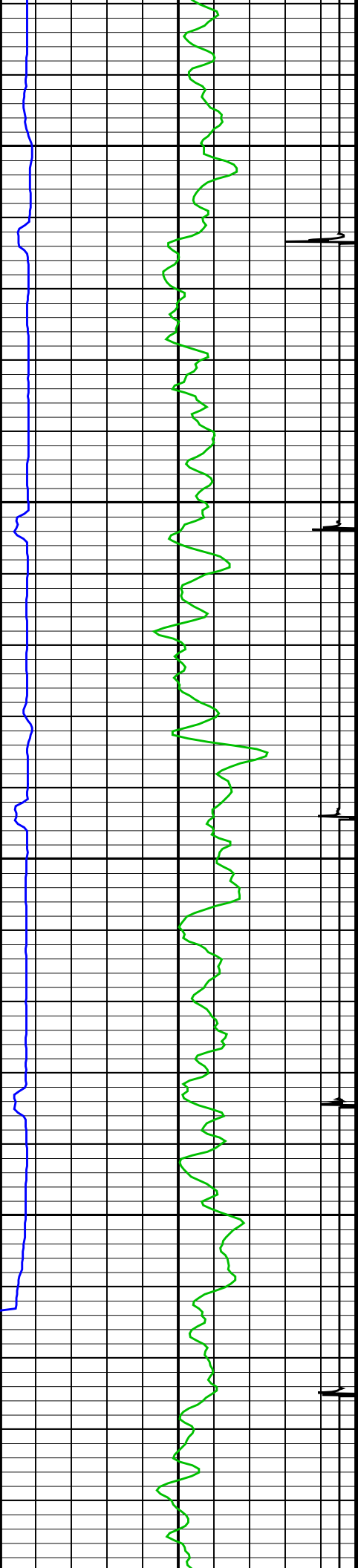


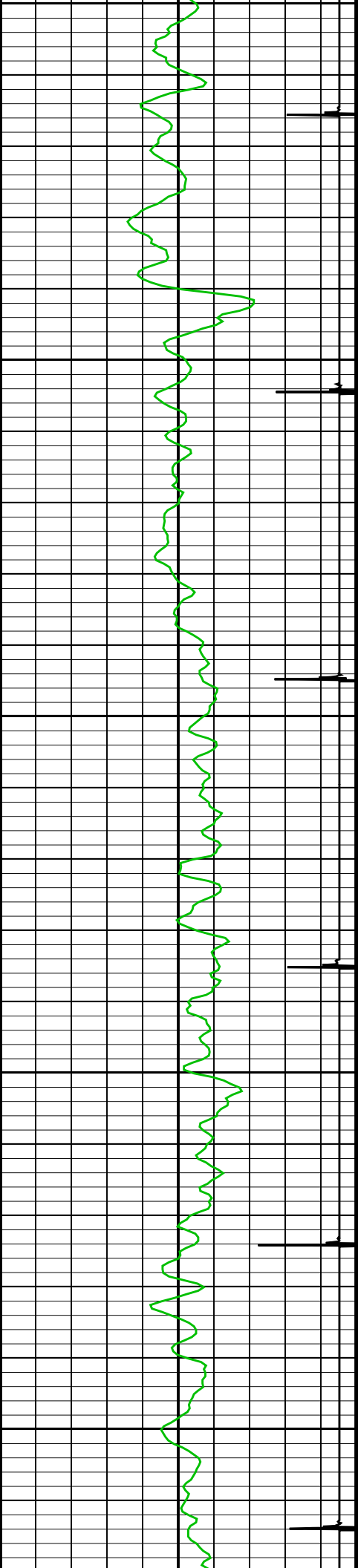
MAXIMUM STRING DIAMETER 1.69 IN
MEASUREMENTS RELATIVE TO TOOL ZERO
ALL LENGTHS IN FEET

Input DLIS Files						
DEFAULT	SCMT_PSP_004LUP	FN:3	PRODUCER	29-May-2008 12:07	2532.5 FT	1158.5 FT
Output DLIS Files						
DEFAULT	SCMT_PSP_005PUP	FN:4	PRODUCER	29-May-2008 12:29	2533.5 FT	1132.5 FT

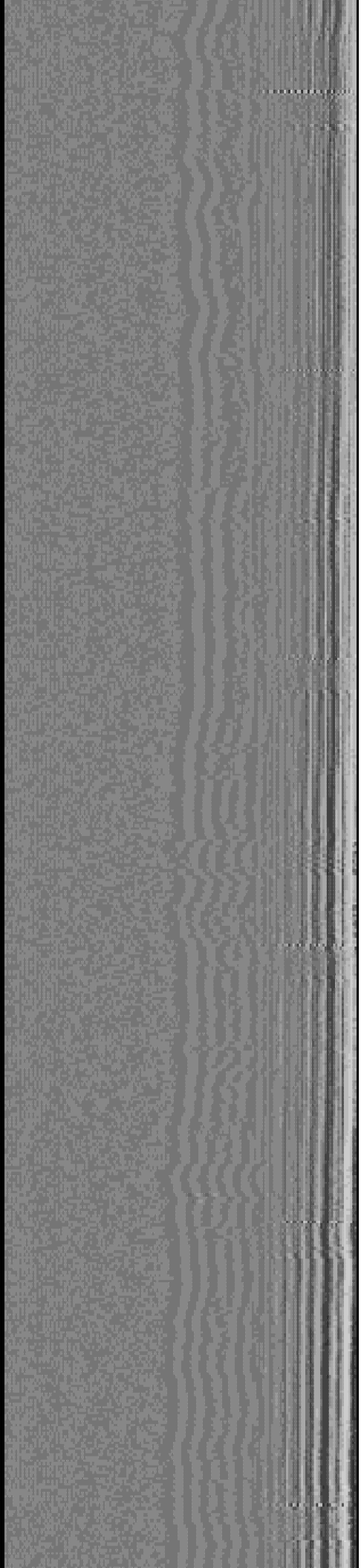
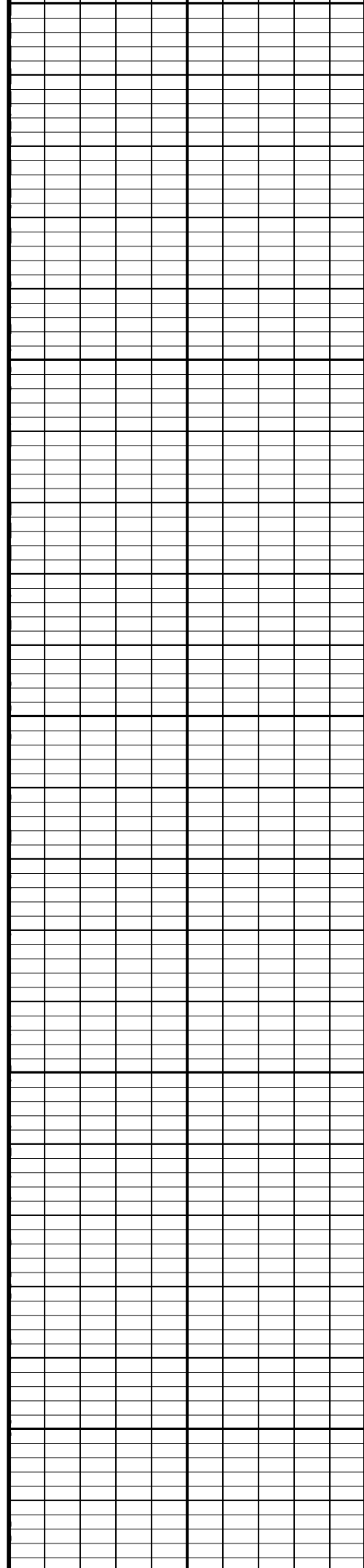
OP System Version: 15C0-309			
MCM			
SCMT-CB	SRPC-3525-DEC_2007_OP15	PSPT-A/B	SRPC-3525-DEC_2007_OP15

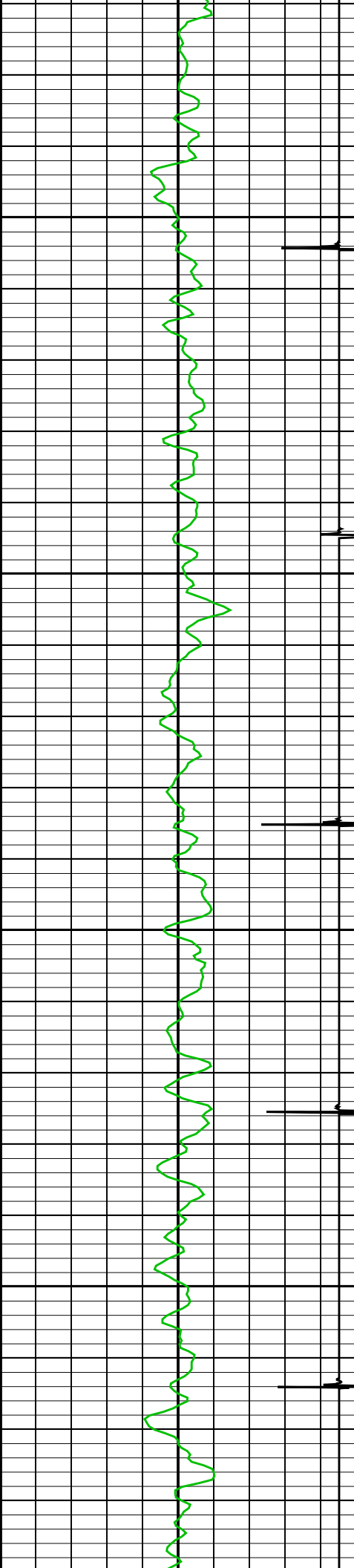






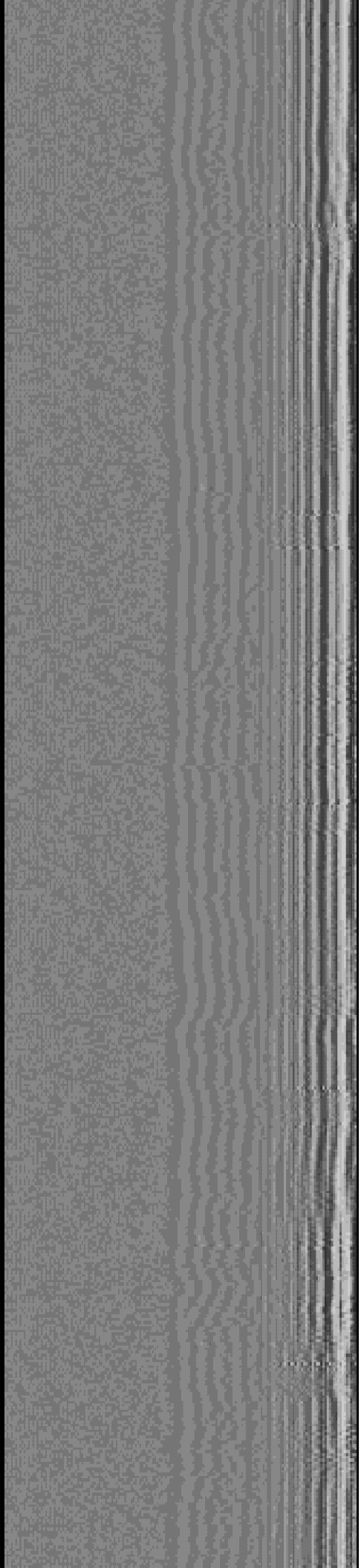
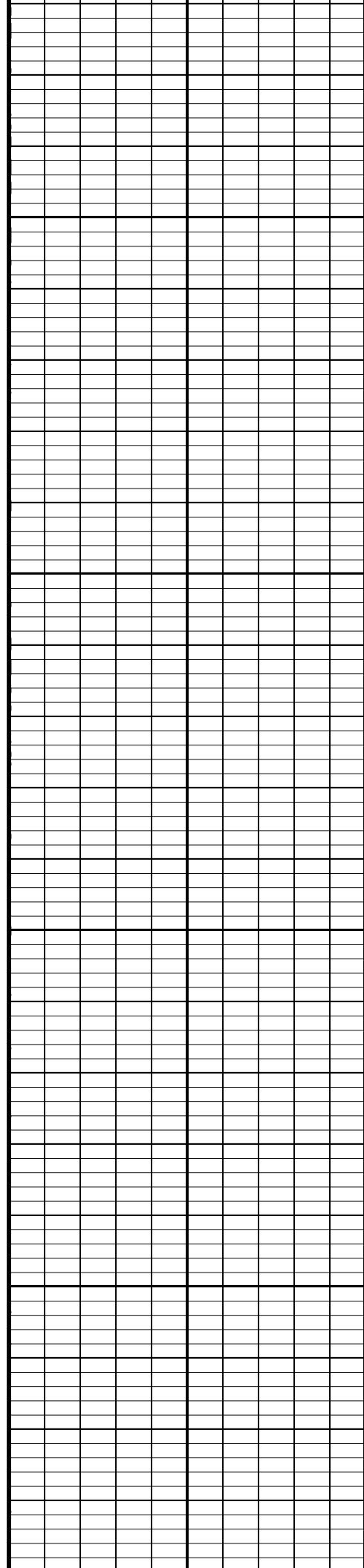
1400
1500
1600

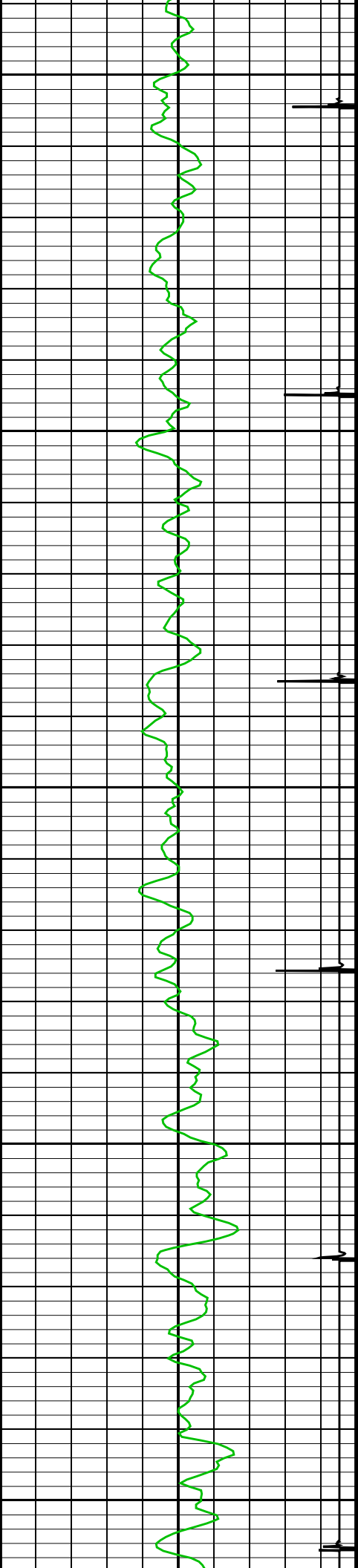




1700

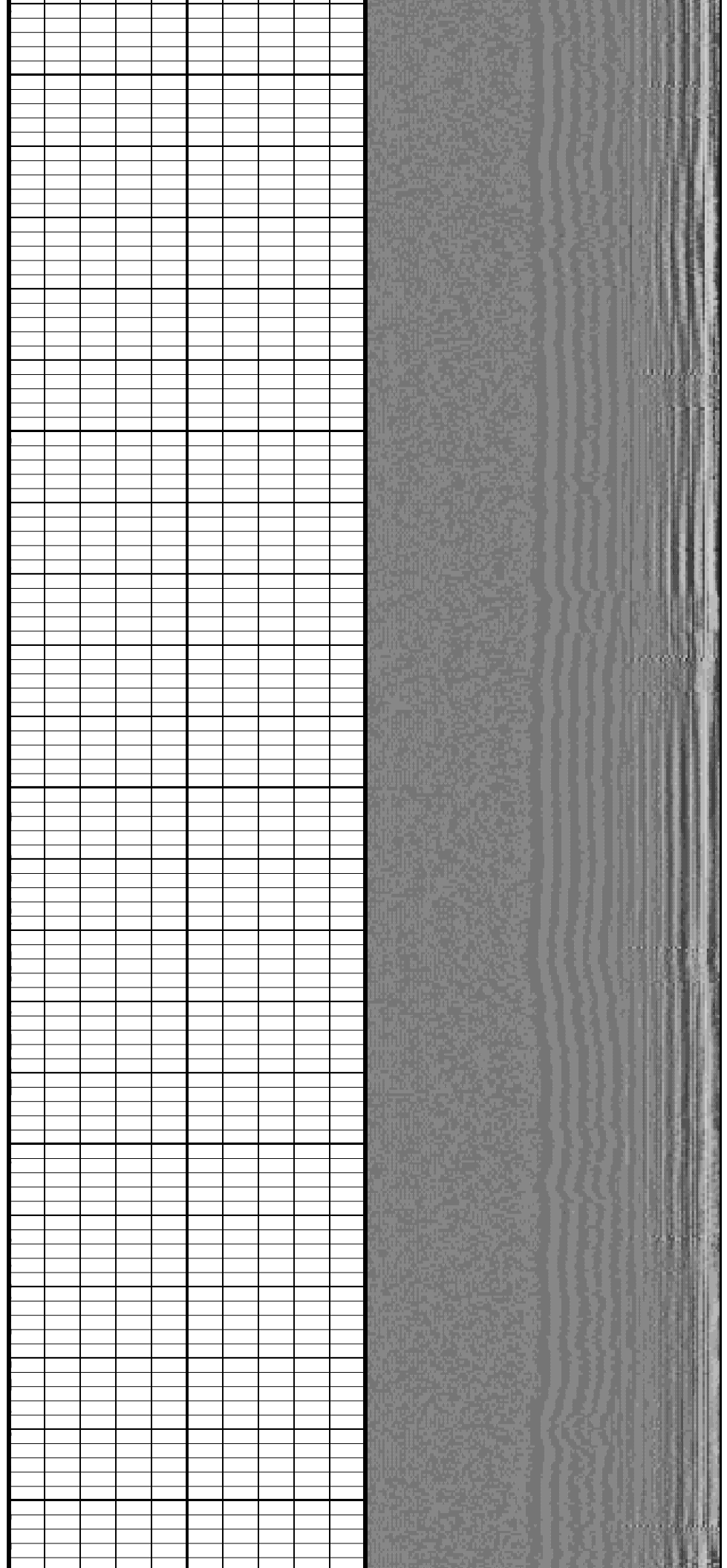
1800

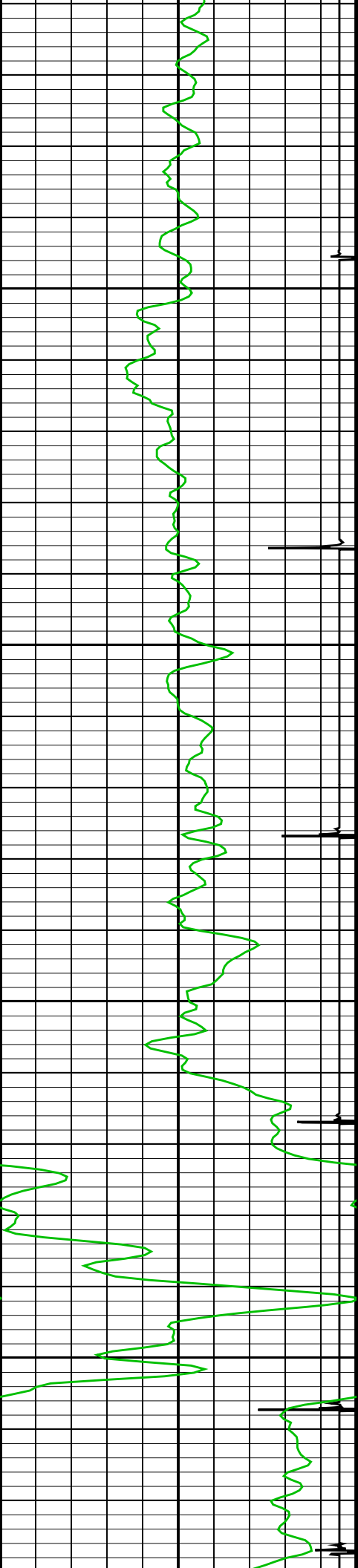




1900

2000

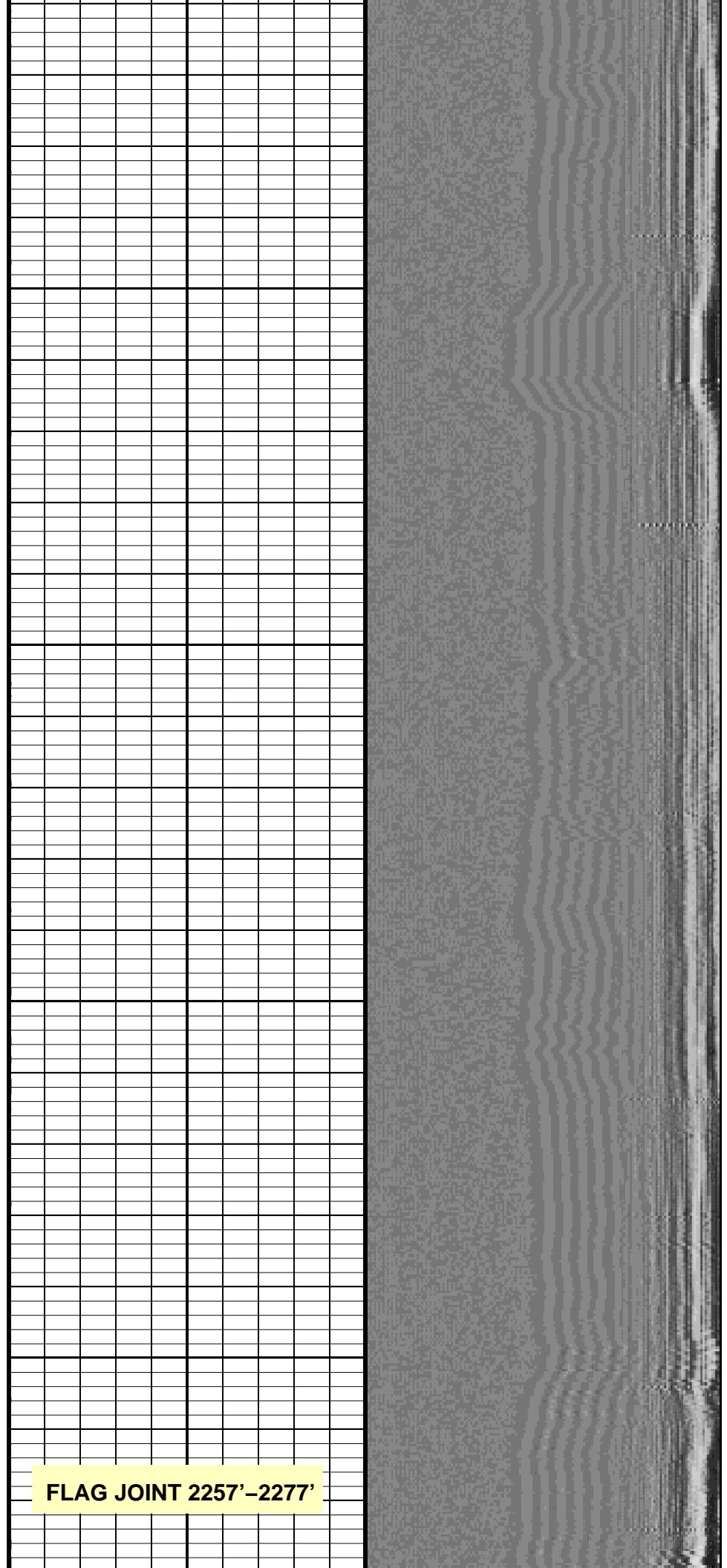


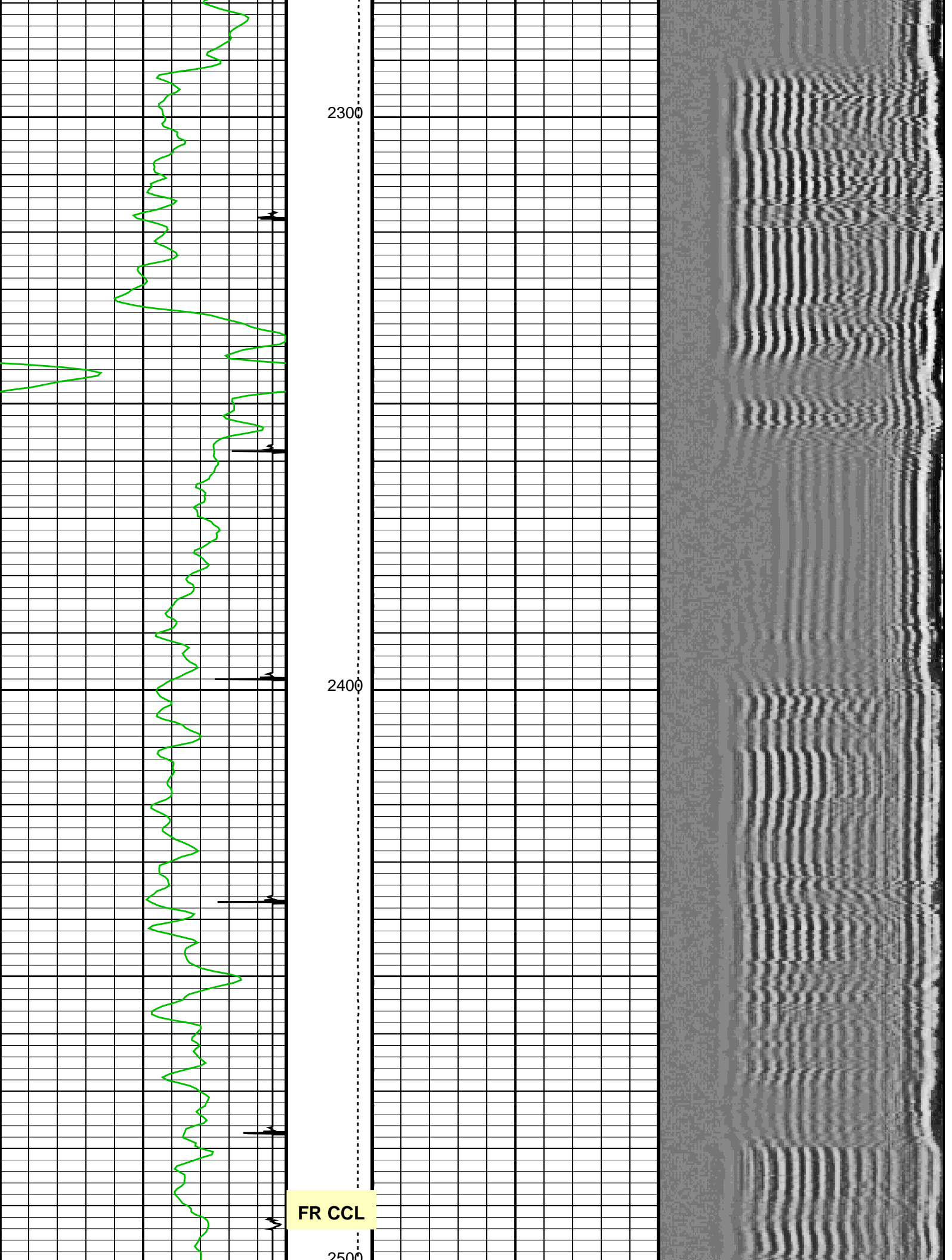


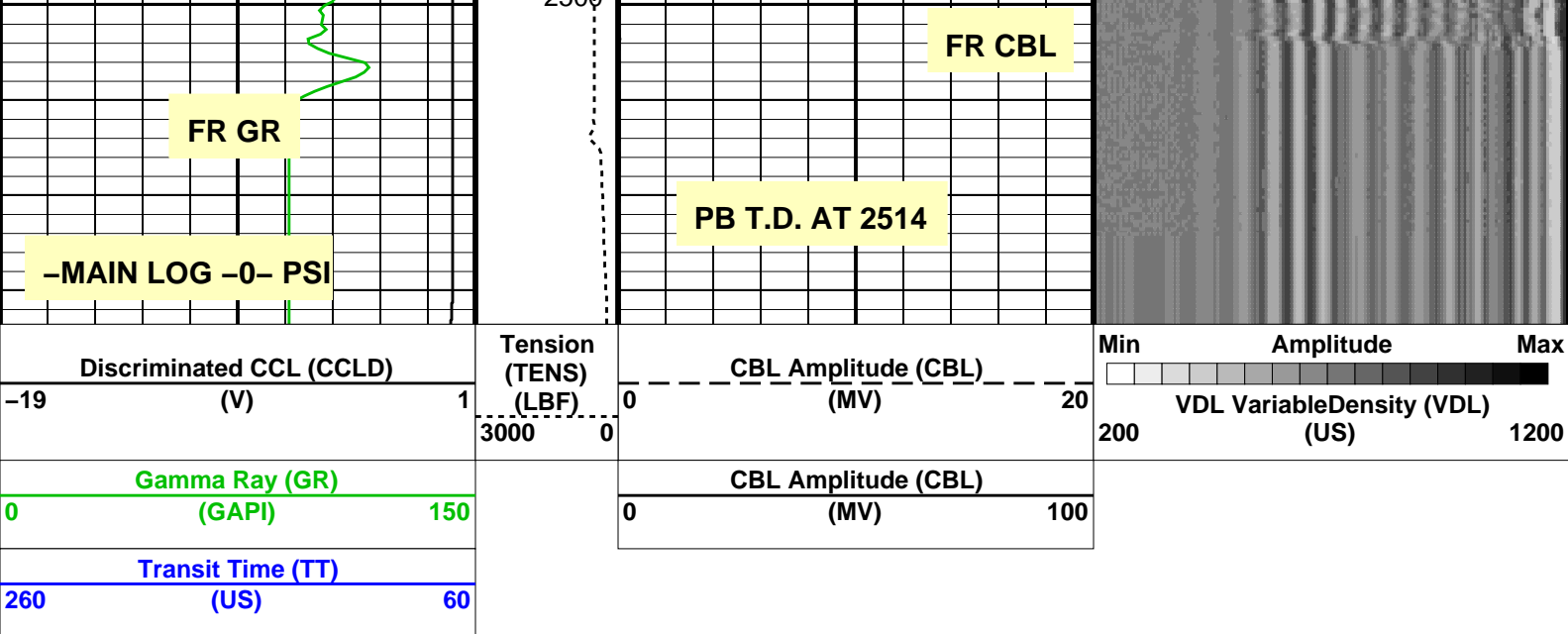
2100

2200

FLAG JOINT 2257'-2277'







Parameters

DLIS Name	Description	Value	
SCMT-CB: Slim Cement Mapping Tool, 1-11/16 OD			
BILI	Bond Index Level for Zone Isolation	0.8	
BISS	Bond Index Source Selection for BIQL	BI	
CB3D	SCMT CBL 3 ft Peak Detection Mode	PEAK	
CB3G	SCMT CBL 3 ft Peak Detection T0_Delay and Noise Gate	229.39	US
CB3T	SCMT CBL 3 ft Fixed Threshold Level	20	MV
CB5D	SCMT CBL 5 ft Peak Detection Mode	PEAK	
CB5G	SCMT CBL 5 ft Peak Detection T0_Delay and Noise Gate	500	US
CB5T	SCMT CBL 5 ft Fixed Threshold Level	20	MV
CBLG	CBL Gate Width	40	US
CBRA	CBL LQC Reference Amplitude in Free Pipe	79	MV
CMCF	CBL Cement Type Compensation Factor	0.0851843	
CMTC	SCMT Slow Channel Multiplexer Mode	SCAN	
CMTM	SCMT Operating Mode	LOG	
CMTF	SCMT Tool position on CAN	3	
CSCS	SCMT Slow Channel Index	VCC	
CTHI	Casing Thickness	0.229988	IN
DTF	Delta-T Fluid	205	US/F
FATT	Acoustic Attenuation due to Fluid	0	DB/F
FCF	CBL Fluid Compensation Factor	1	
GOBO	Good Bond	0.935163	MV
MAPD	SCMT MAP Peak Detection Mode	PEAK	
MAPG	SCMT MAP Peak Detection T0_Delay and Noise Gate	172.39	US
MAPT	SCMT MAP Fixed Threshold Level	30	MV
MATT	Maximum Attenuation	10.6967	DB/F
MCCF	MAP Cement Type Compensation Factor	0.207723	
MCI	Minimum Cemented Interval for Isolation	1.25	FT
MMSA	MAP Minimum Sonic Amplitude	2.90558	MV
MSA	Minimum Sonic Amplitude	0.308463	MV
PEDE	Peak Detection On/Off Switch in Playback	OFF	
RBC	Relative Bearing Correction Allow/Disallow	ALLOW	
VDLG	VDL Manual Gain	5	
ZCMT	Acoustic Impedance of Cement	3.22	MRAY
PSPT-A/B: Production Services Logging Platform			
BHS	Borehole Status	CASED	
BHT	Bottom Hole Temperature (used in calculations)	118	DEGF
CSID	Casing Size I.D.	4.052	IN
GCSE	Generalized Caliper Selection	BS	
GDEV	Average Angular Deviation of Borehole from Normal	0	DEG
GGRD	Geothermal Gradient	0.01	DF/F
GRSE	Generalized Mud Resistivity Selection	CHART_GEN_9	
GTSE	Generalized Temperature Selection	LINEAR_ESTIMATE	
ISSBAR	Barite Mud Switch	NOBARITE	
MATR	Rock Matrix for Neutron Porosity Corrections	LIMESTONE	
PBPO	PBMS Tool position on CAN	2	
PCCG	PBMS CCL Gain	DB24	
PSTP	PSTC Tool Position on CAN Bus	1	
SHT	Surface Hole Temperature	68	DEGF
System and Miscellaneous			
ALTDCHAN	Name of alternate depth channel	SpeedCorrectedDepth	
BS	Bit Size	6.250	IN
BSAL	Borehole Salinity	-50000.00	PPM
CSIZ	Current Casing Size	4.500	IN

CWEI	Casing Weight	10.50	LB/F
DFD	Drilling Fluid Density	-50000.00	LB/G
DO	Depth Offset for Playback	1.0	FT
FLEV	Fluid Level	0.00	FT
MST	Mud Sample Temperature	-50000.00	DEGF
PBVSADP	Use alternate depth channel for playback	NO	
PP	Playback Processing	NORMAL	
RMFS	Resistivity of Mud Filtrate Sample	-50000.0000	OHMM
RW	Resistivity of Connate Water	0.0000	OHMM
TD	Total Depth	-50000	FT
TDD	Total Depth - Driller	2550.00	FT
TDL	Total Depth - Logger	0.00	FT
TWS	Temperature of Connate Water Sample	0.00	DEGF

Format: CBL_VDL Vertical Scale: 5" per 100' Graphics File Created: 29-May-2008 12:29

OP System Version: 15C0-309
MCM

SCMT-CB SRPC-3525-DEC_2007_OP15 PSPT-A/B SRPC-3525-DEC_2007_OP15

Input DLIS Files

DEFAULT SCMT_PSP_004LUP FN:3 PRODUCER 29-May-2008 12:07 2532.5 FT 1158.5 FT

Output DLIS Files

DEFAULT SCMT_PSP_005PUP FN:4 PRODUCER 29-May-2008 12:29

Company: **Rosetta Resources Operating, LP**

Schlumberger

Well: **FIX 2-7**

Field: **WILDCAT**

County: **YUMA**

State: **COLORADO**

CEMENT BOND
GAMMA RAY CCL LOG