



SUPERIOR
WELL SERVICES
Black Lick, Pa.
Mercer, Pa.
Wooster, Oh.
Cleveland, Ok.
Trinidad, Co.

**CEMENT BOND
GAMMA RAY
LOG
1000 PSI**

Company XTO Energy Inc.
Well Golden Eagle 33-03
Field Purgatoire River
County Las Animas State Colorado

Location: API # : 05 071 09508 00
659' FNL & 2035' FWL
SEC 33 TWP 33S RGE 67W
Permanent Datum Ground Level Elevation 7416'
Log Measured From Ground Level
Drilling Measured From Ground Level
Other Services
Elevation
K.B. ---
D.F. ---
G.L. 7416'

Date 7-17-08

Run Number	One		
Depth Driller	2150'		
Depth Logger	2091'		
Bottom Logged Interval	2087'		
Top Log Interval	Surface		
Open Hole Size	7 7/8"		
Type Fluid	Water		
Density / Viscosity	///		
Max. Recorded Temp.	140 Deg F		
Estimated Cement Top	Surface		
Time Well Ready	R.O.A.		
Time Logger on Bottom	7:30 AM		
Equipment Number	T0700		
Location	Trinidad		
Recorded By	K. Lucero		
Witnessed By	Mr. Travis Gourdin		

Borehole Record				Tubing Record			
Run Number	Bit	From	To	Size	Weight	From	To
Casing Record	Size			Wgt/Ft		Top	Bottom
Surface String	8 5/8					00'	490'
Prot. String							
Production String	5 1/2					00'	2091'
Liner							

<<< Fold Here >>>

All interpretations are opinions based on inferences from electrical or other measurements and we cannot and do not guarantee the accuracy or correctness of any interpretation, and we shall not, except in the case of gross or willful negligence on our part, be liable or responsible for any loss, costs, damages, or expenses incurred or sustained by anyone resulting from any interpretation made by any of our officers, agents or employees. These interpretations are also subject to our general terms and conditions set out in our current Price Schedule.

Comments

Well Directions:
Hwy 12 Past Weston, turn left across from substation, go thru gate, immediate right first left, next location on left.



SUPERIOR
Black Lick, Pa.
Mercer, Pa.
Wooster, Oh.
Cleveland, Ok.
Trinidad, Co.

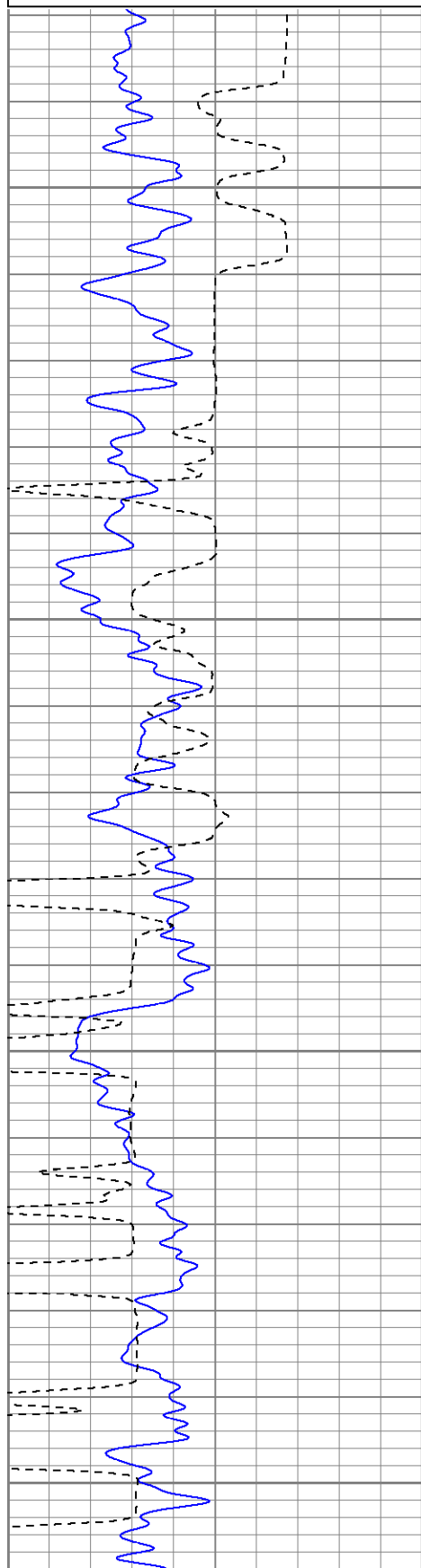
Main Pass

Database File: xtoge33-0371708b.db
Dataset Pathname: pass2.1
Presentation Format: cblrt
Dataset Creation: Thu Jul 17 09:08:10 2008 by Calc Open-Cased 071220
Charted by: Depth in Feet scaled 1:240

0	GR (GAPI)	200
400	TT3 (usec)	200
<hr/>		
200	GR (GAPI)	400

0	Amplitude (mV)	100
18	CCL	-2
<hr/>		
200	CBL5	1200

200 VDL 1200

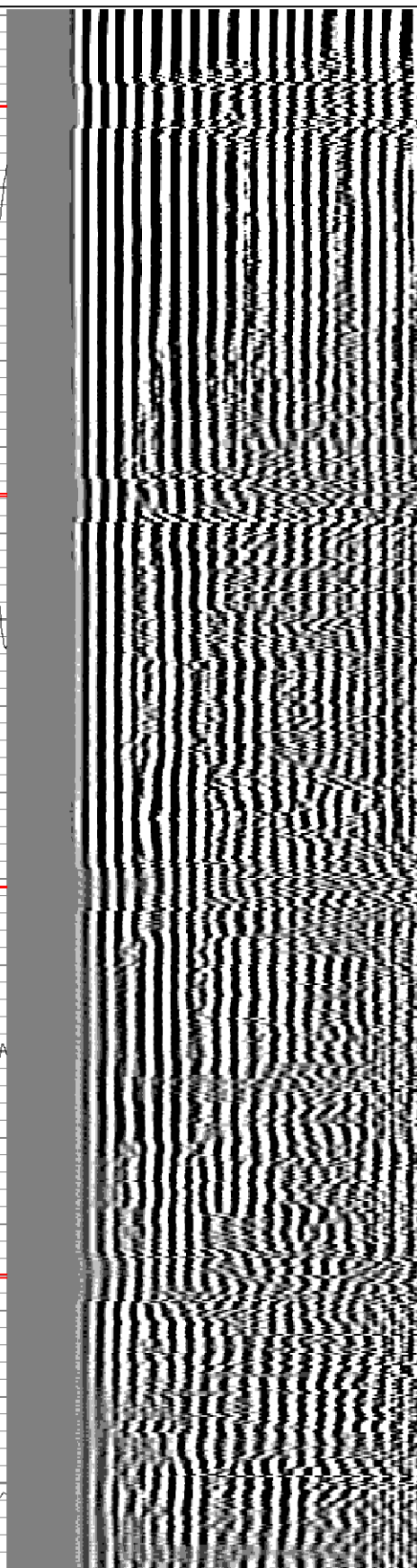
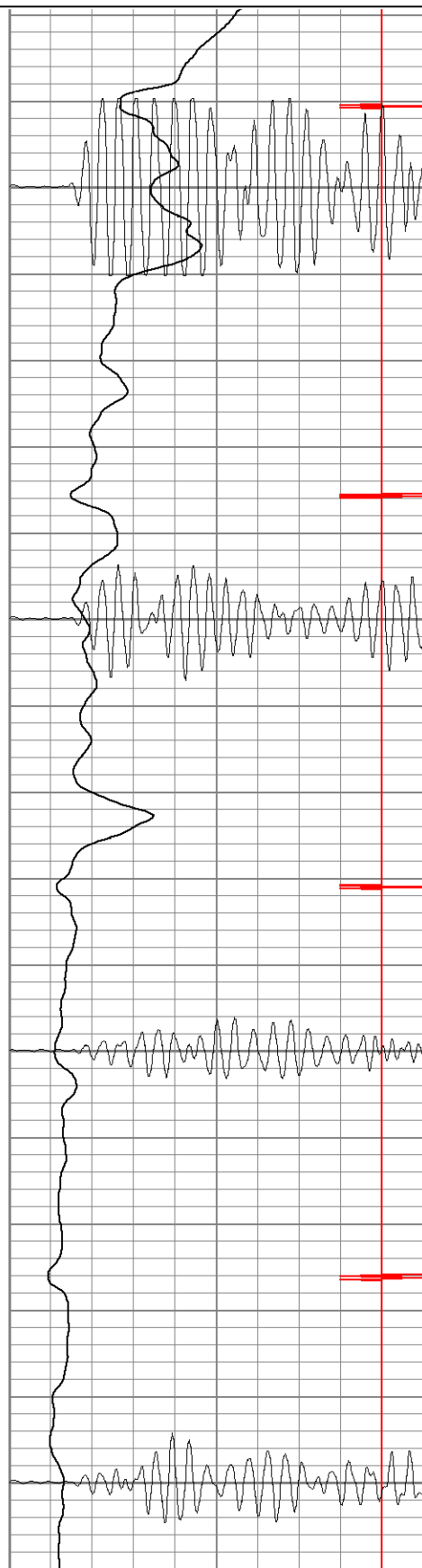


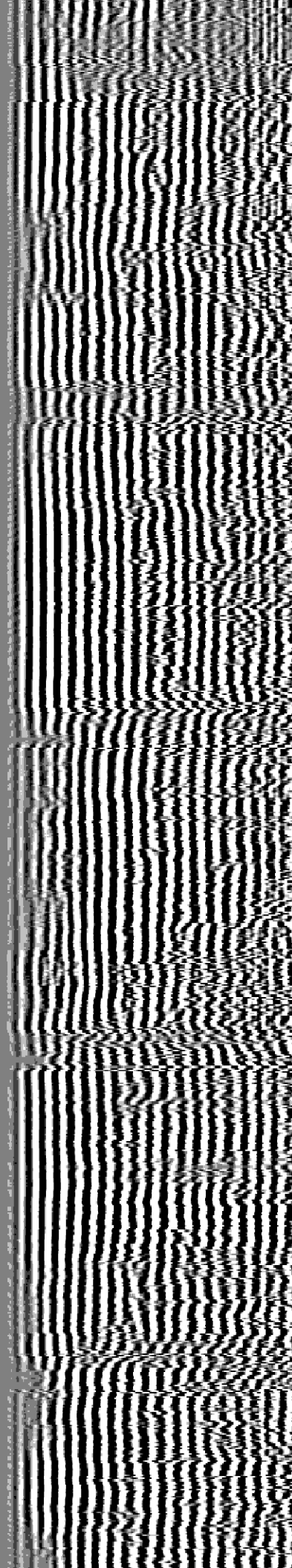
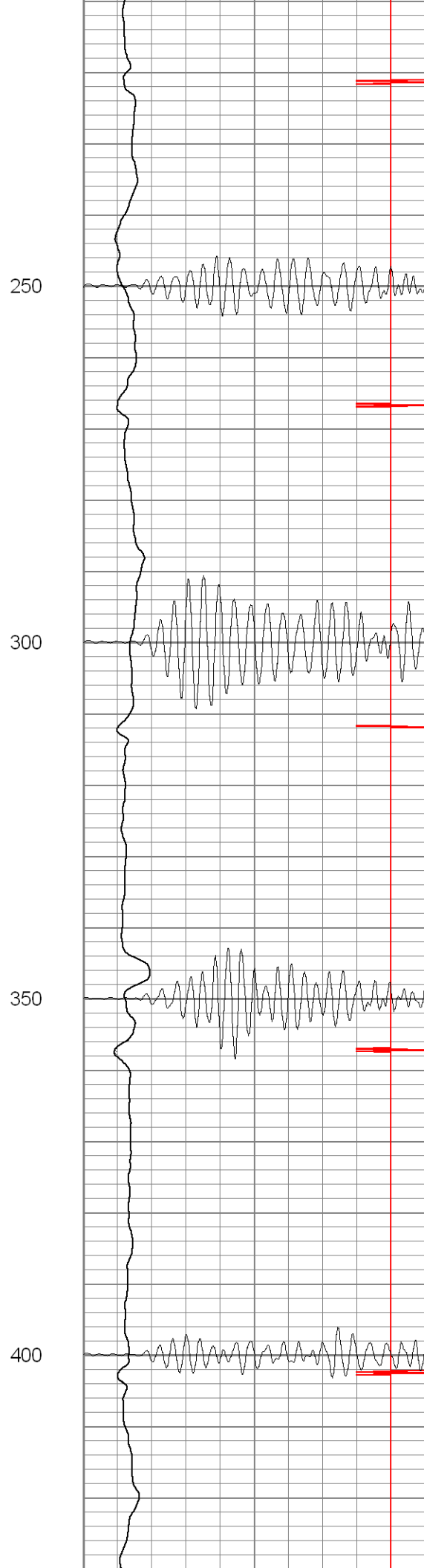
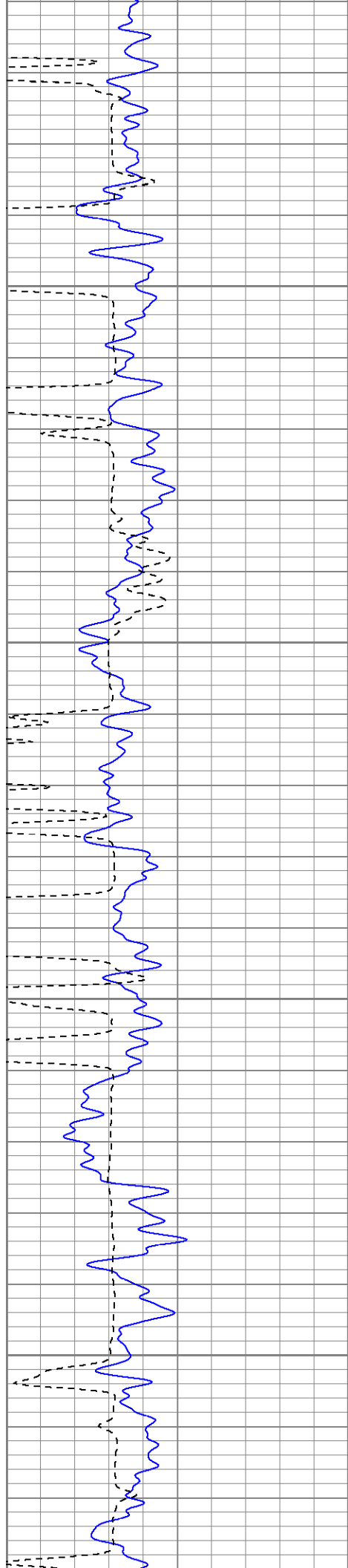
50

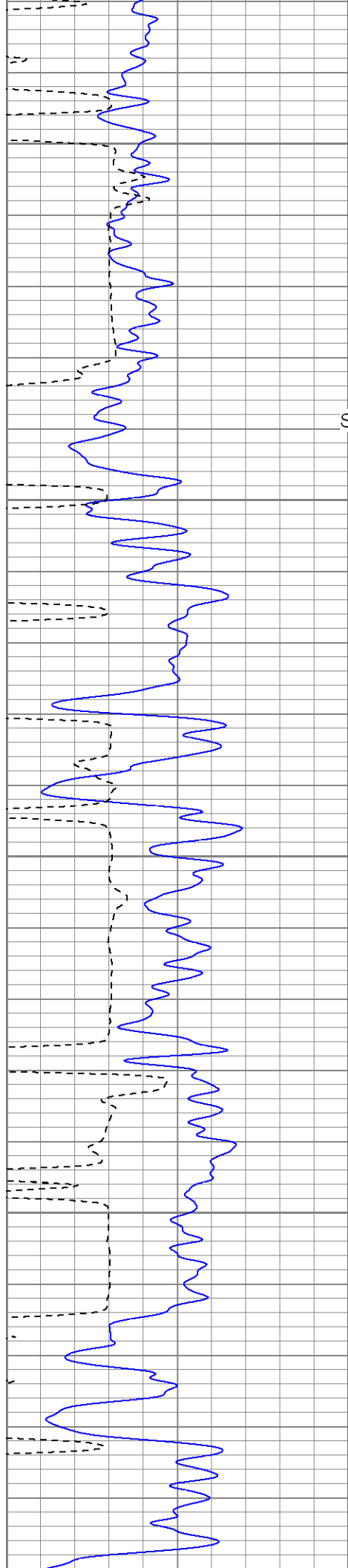
100

150

200







Surface Casing

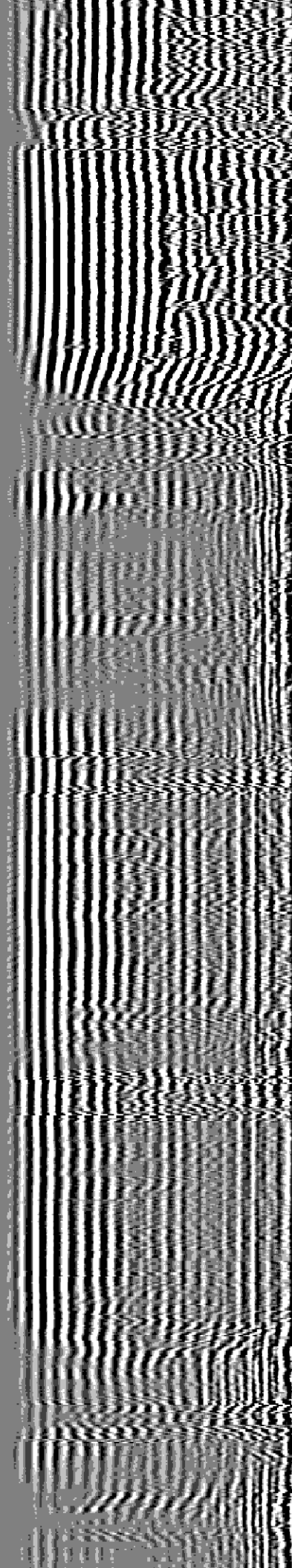
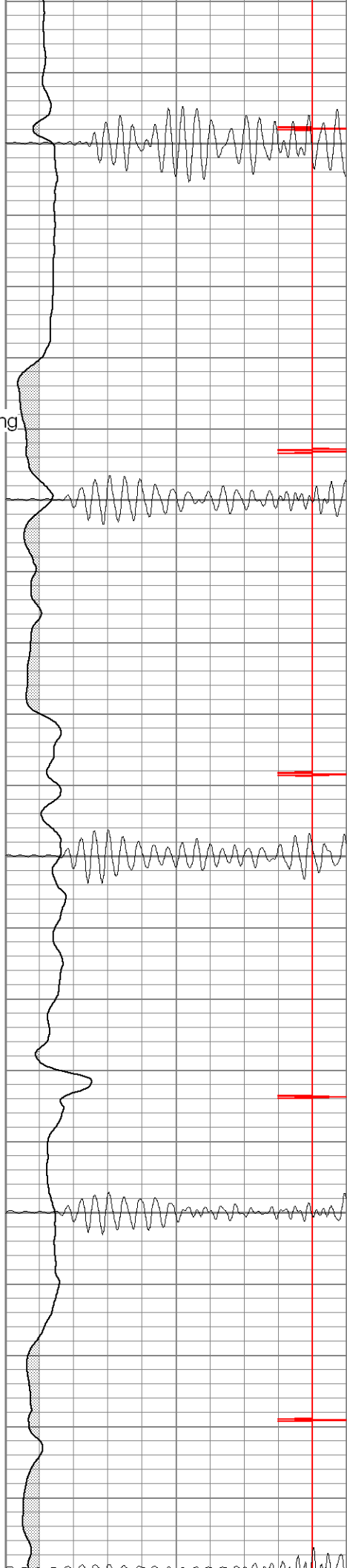
450

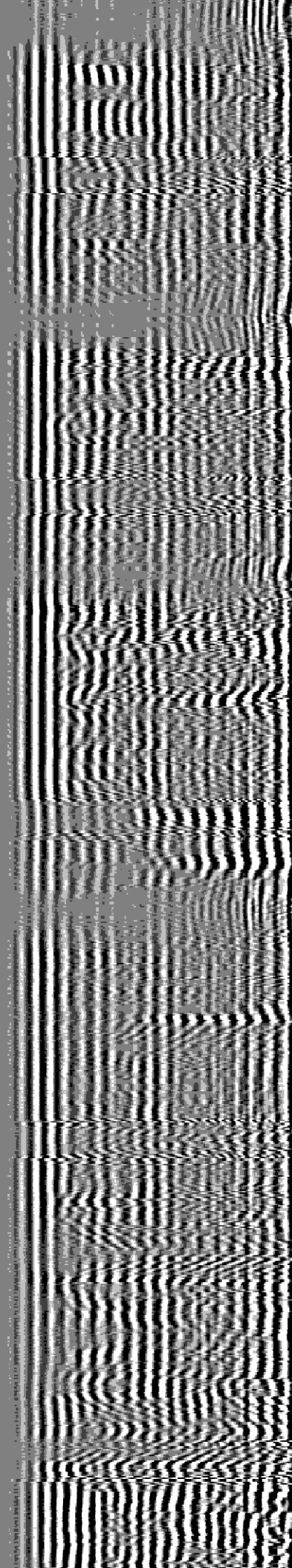
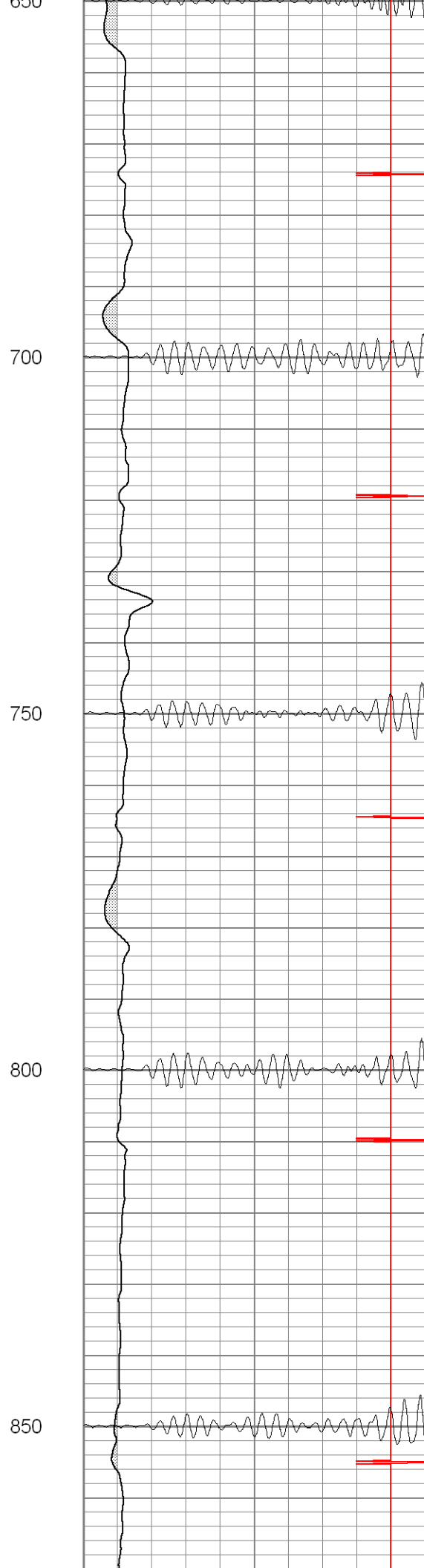
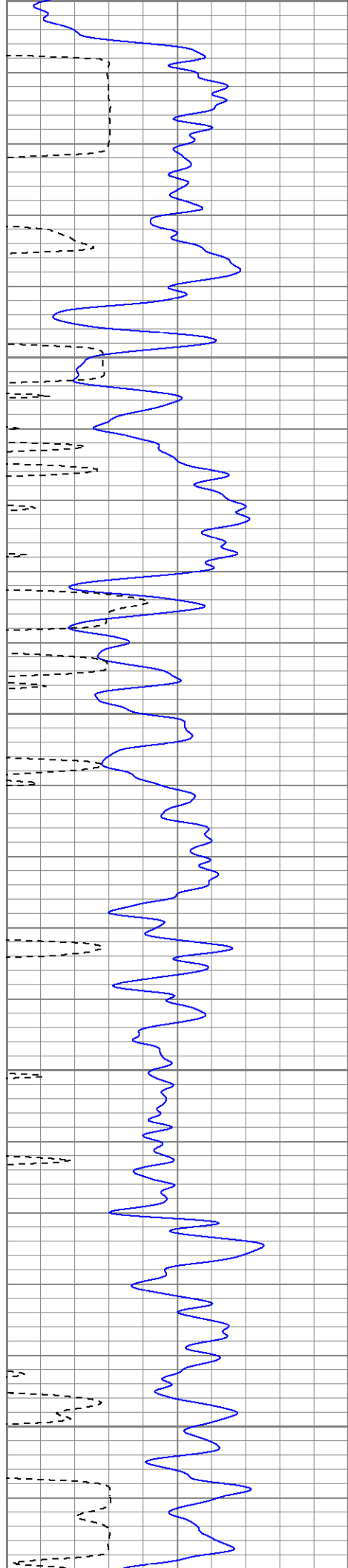
500

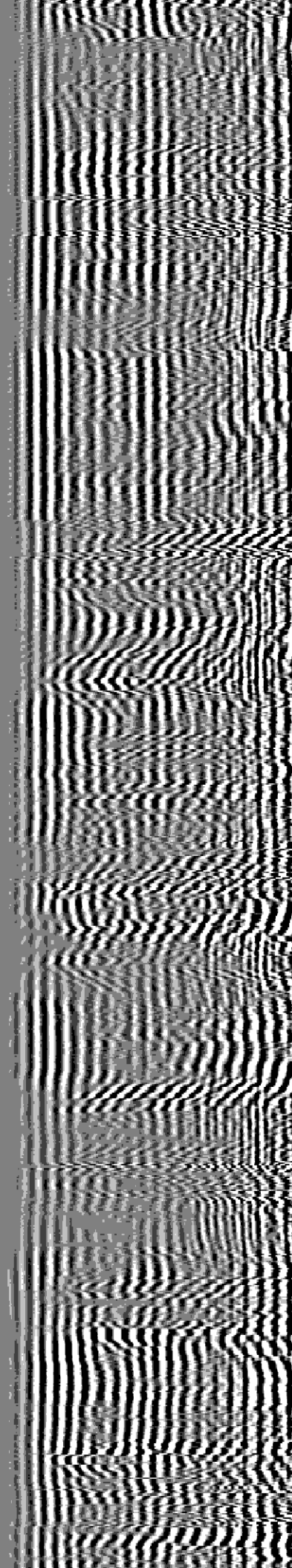
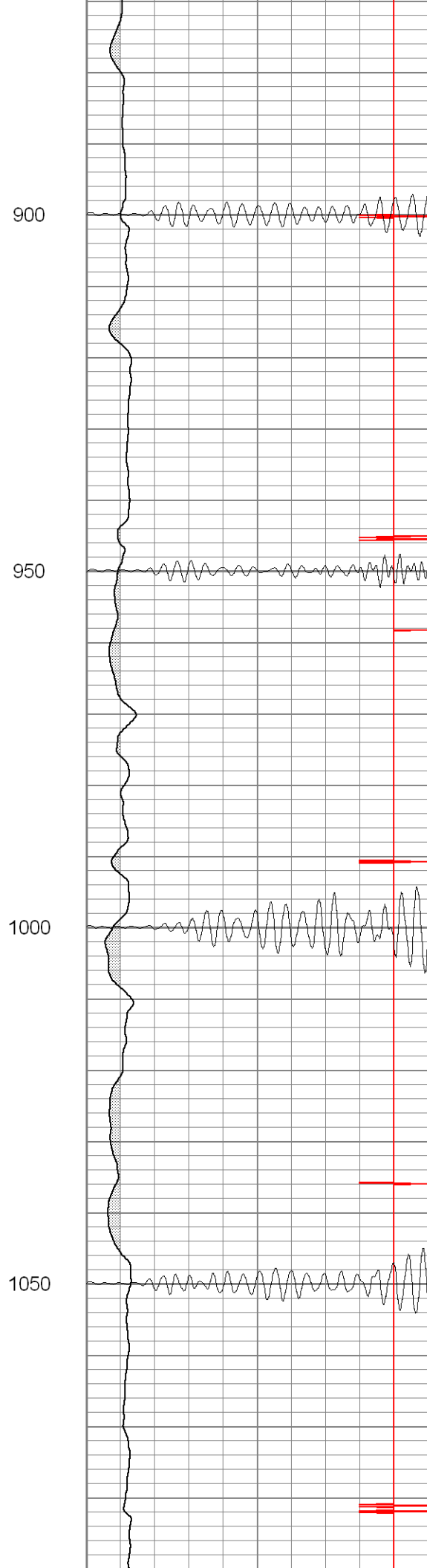
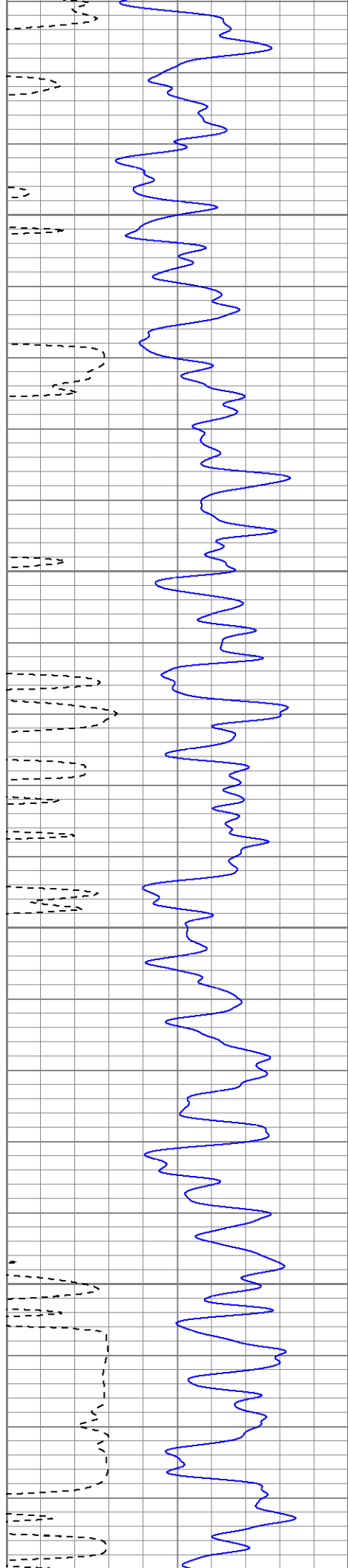
550

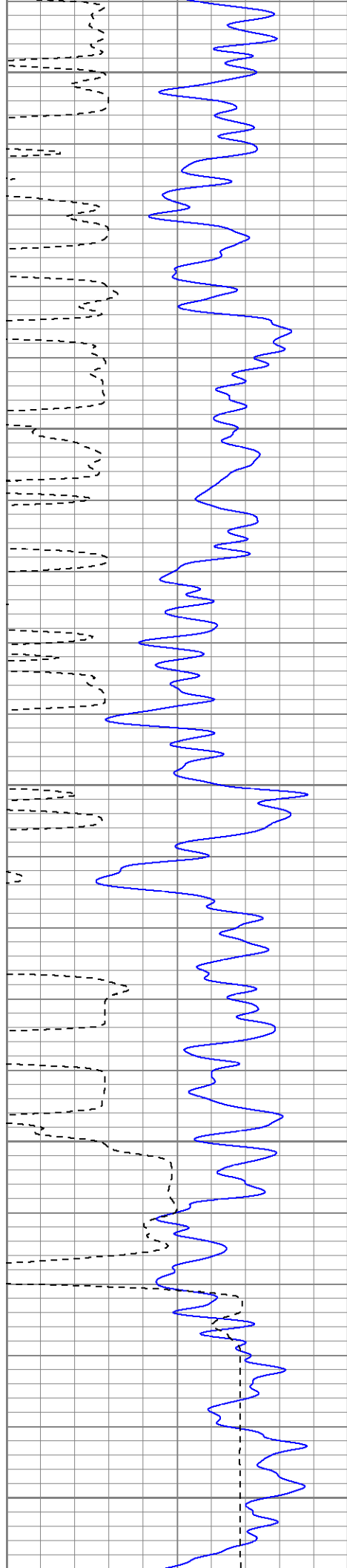
600

650









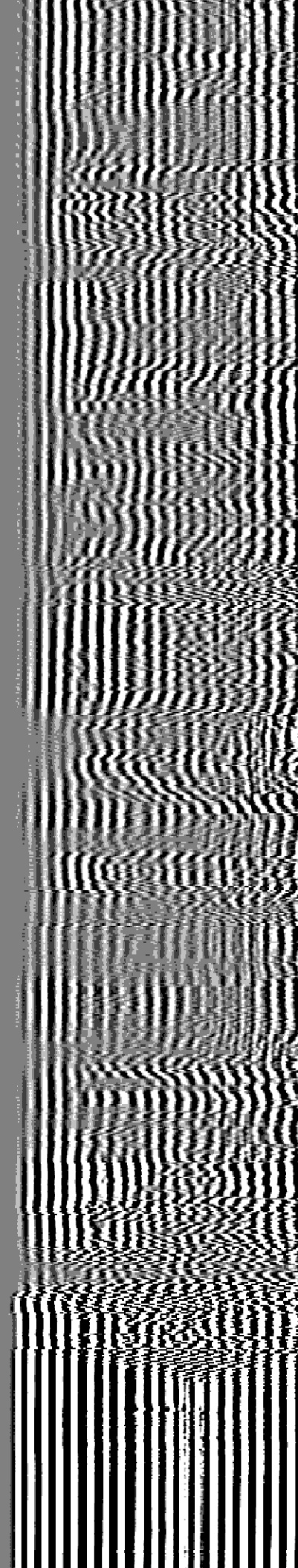
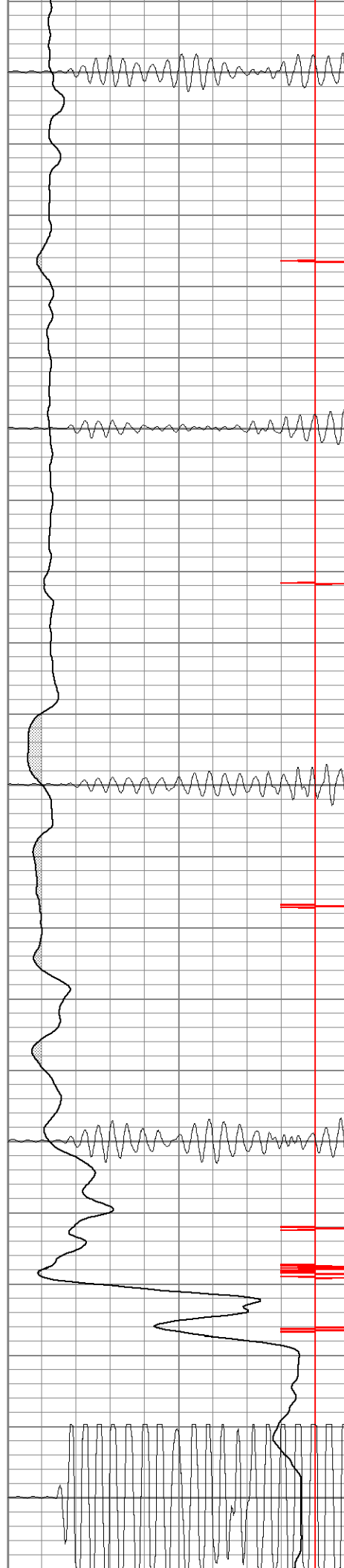
1100

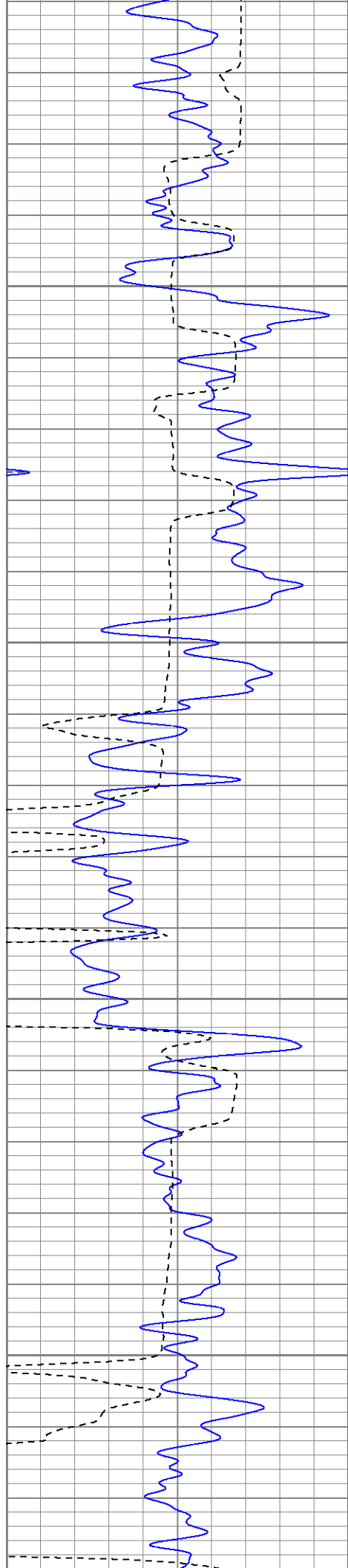
1150

1200

1250

1300



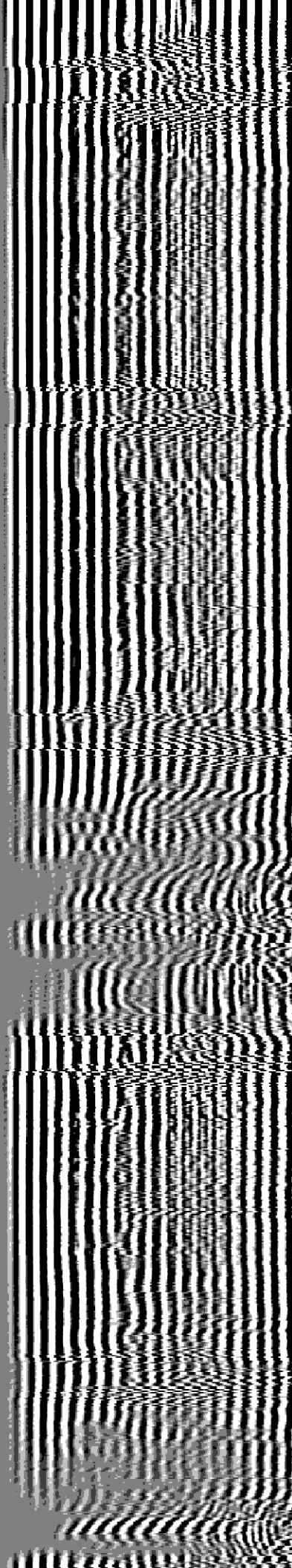
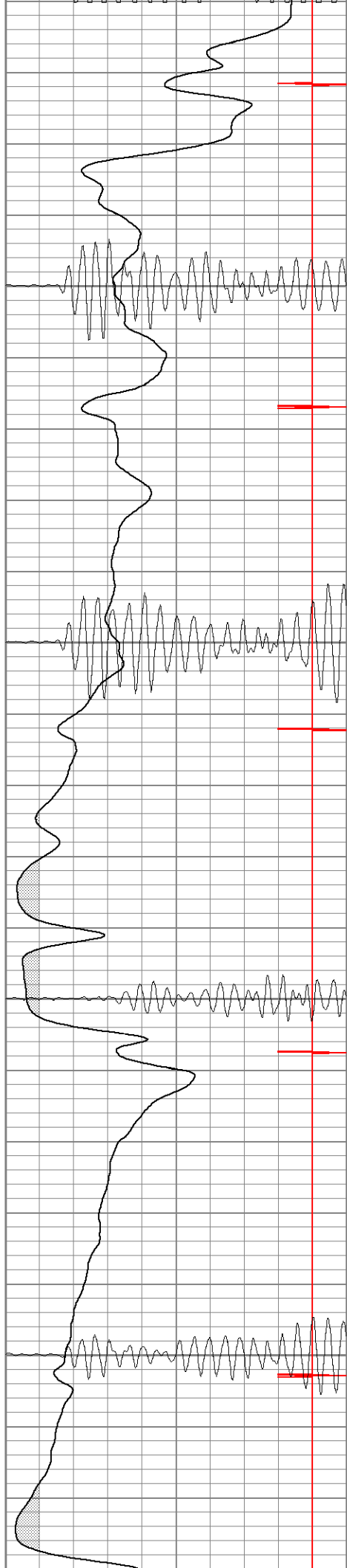


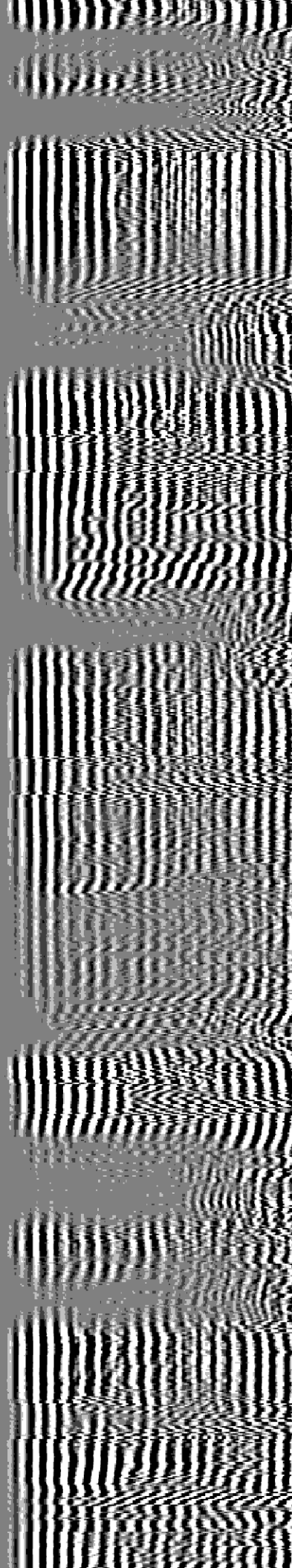
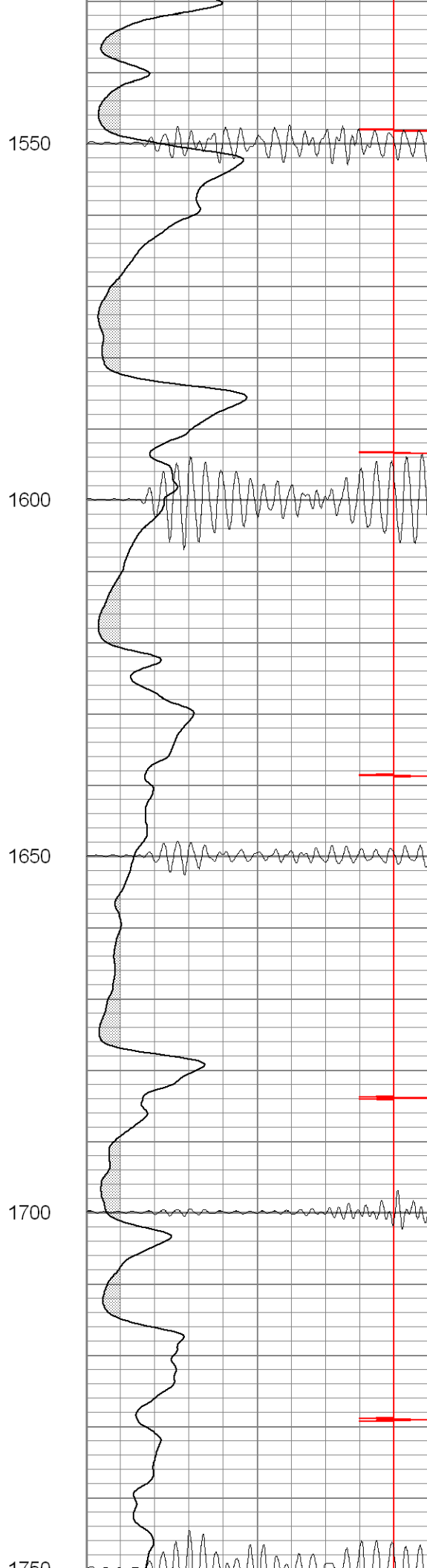
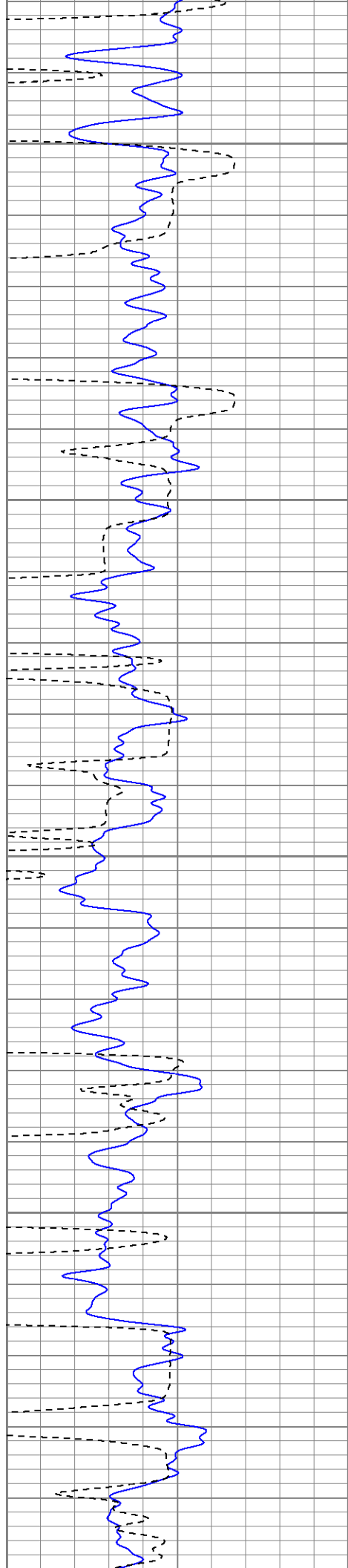
1350

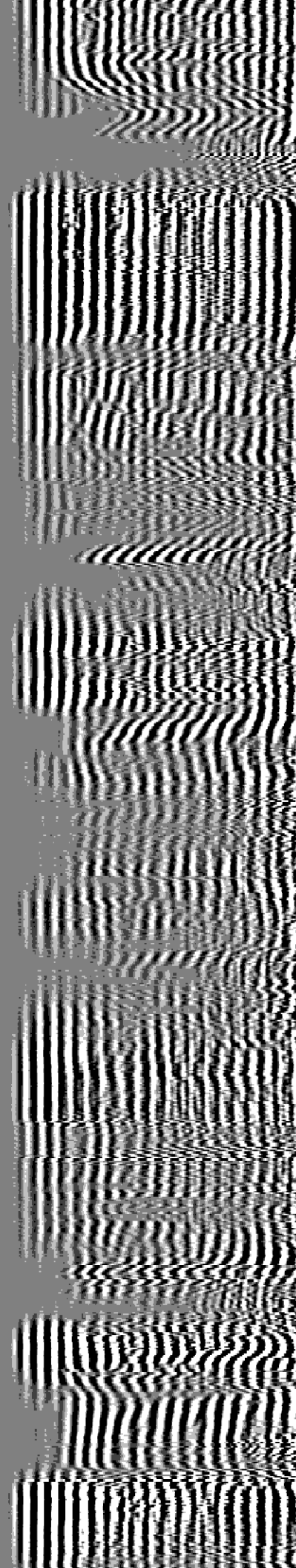
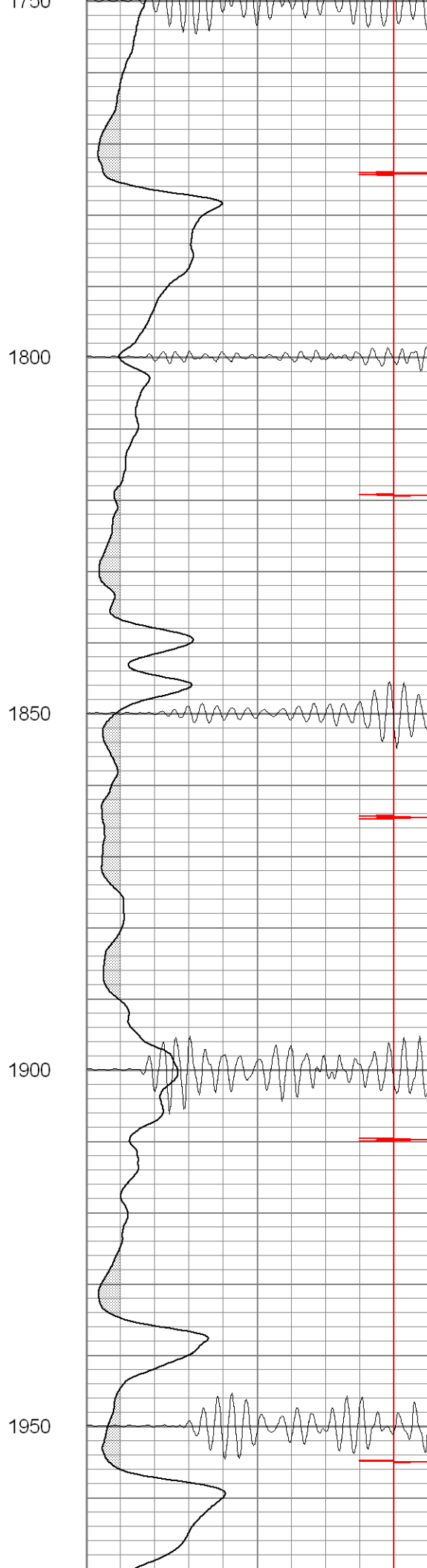
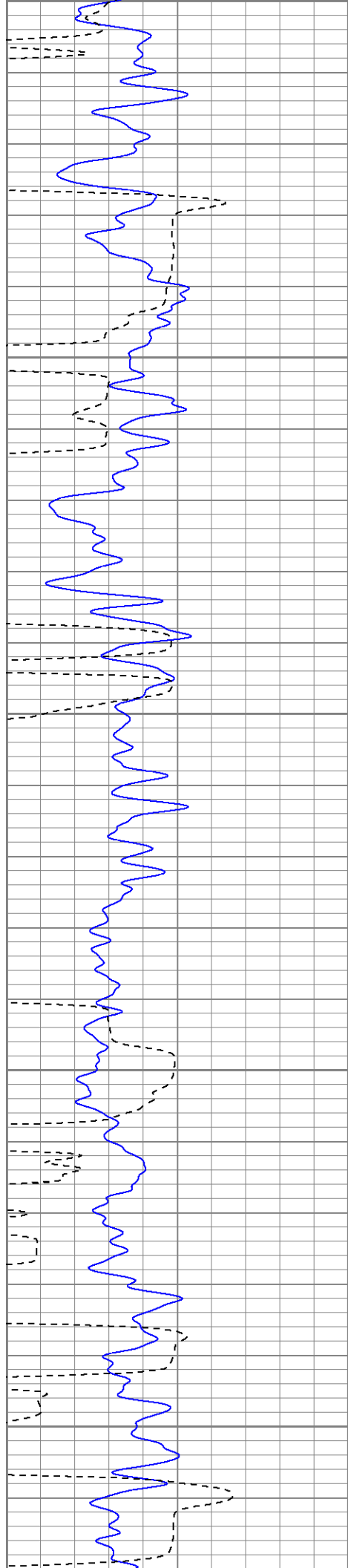
1400

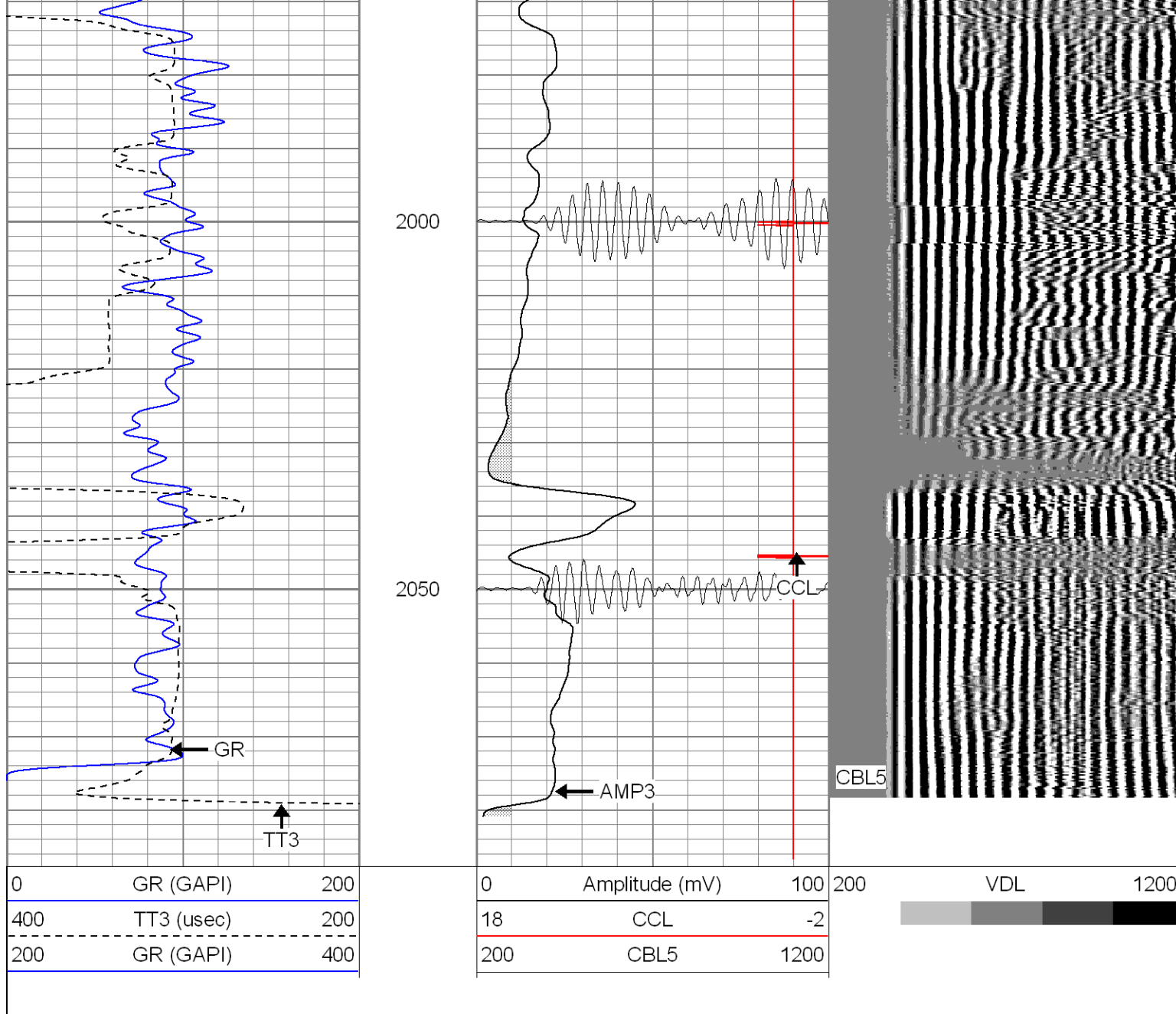
1450

1500







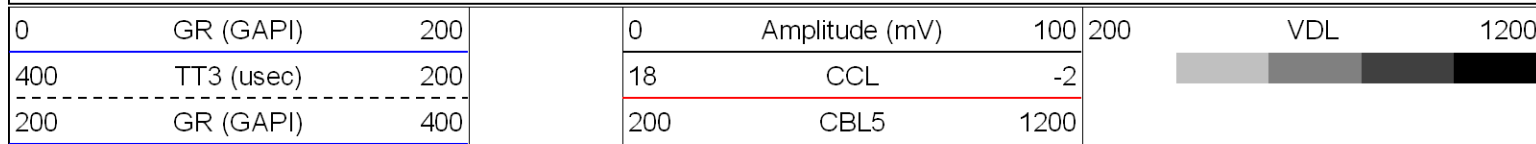


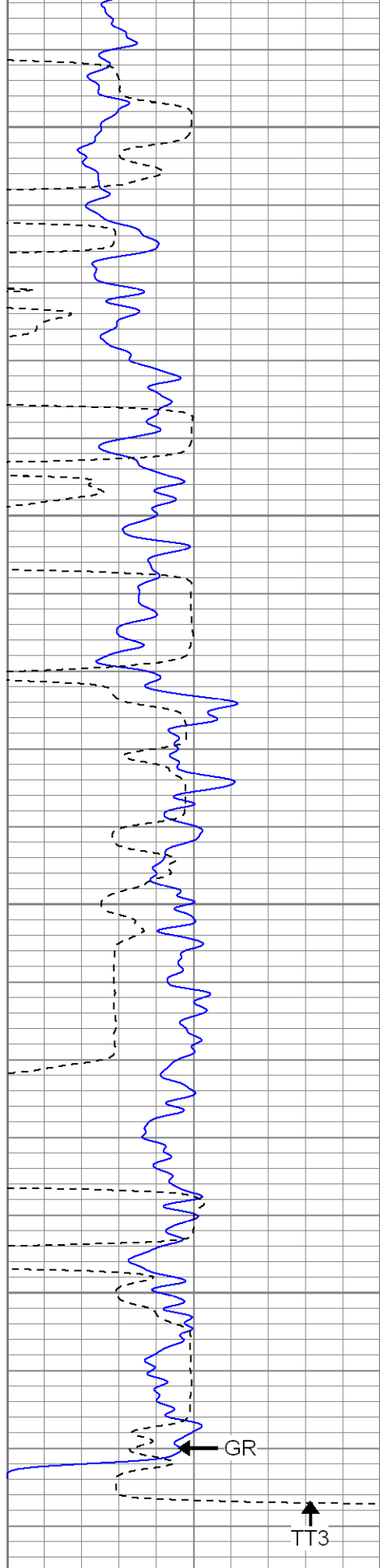
SUPERIOR

Black Lick, Pa.
Mercer, Pa.
Wooster, Oh.
Cleveland, Ok.
Trinidad, Co.

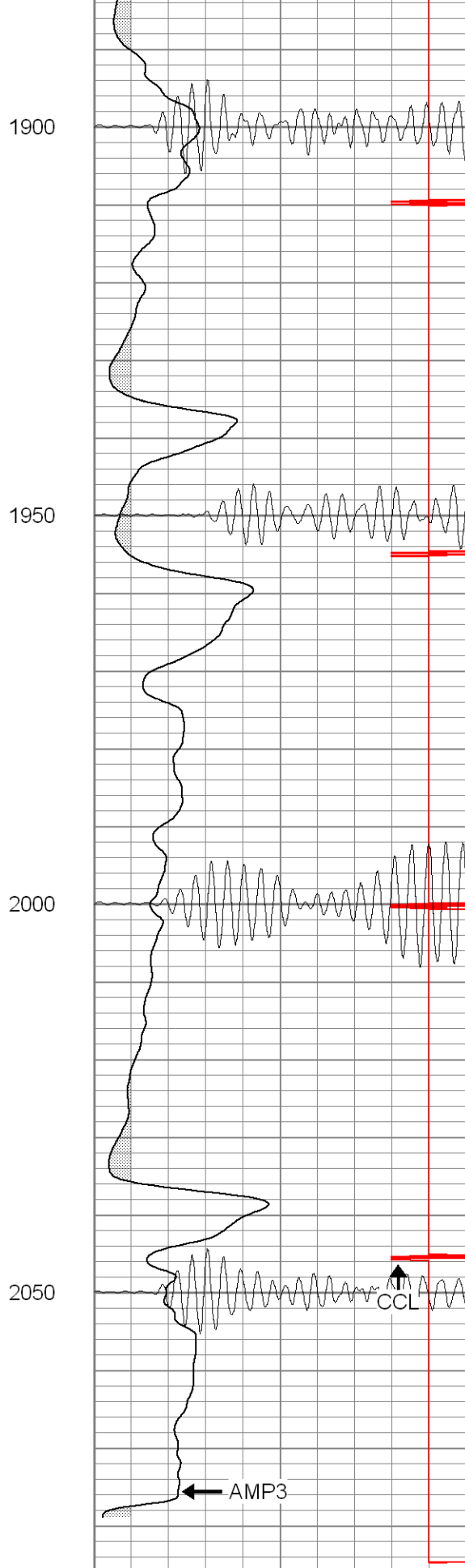
Repeat Section

Database File: xtoge33-0371708b.db
Dataset Pathname: pass1.1
Presentation Format: cblrt
Dataset Creation: Thu Jul 17 08:18:37 2008 by Calc Open-Cased 071220
Charted by: Depth in Feet scaled 1:240

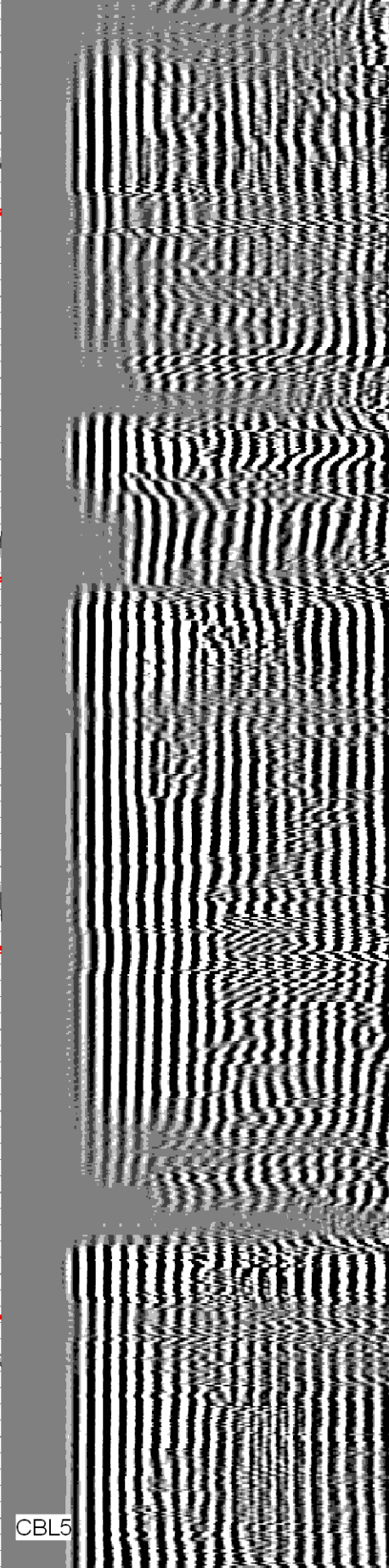




0	GR (GAPI)	200
400	TT3 (usec)	200
200	GR (GAPI)	400



0	Amplitude (mV)	100
18	CCL	-2
200	CBL5	1200



200	VDL	1200
-----	-----	------

Calibration Report

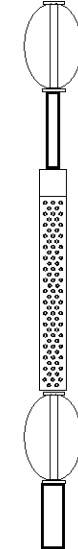
Database File: xtoge33-0371708b.db
 Dataset Pathname: pass1
 Dataset Creation: Thu Jul 17 07:46:43 2008 by Log Open-Cased 071220

Cement Bond Log Calibration Report

Serial Number:	Titan5		
Tool Model:	T5		
Performed:	Thu Jul 03 10:23:25 2008		
Depth:	2424.98	ft	
Casing Diameter:	5.5	in	
	3' Spacing	5' Spacing	
Signal Zero:	1	1	mV
Calibrated Amplitude:	85	85	mV
Reading at Signal Zero:	-0.02	0	V
Reading in Free Pipe:	1.49	2.4	V
Gain:	55.6291	35	
Offset:	2.11258	1	

Gamma Ray Calibration Report

Serial Number:	Titan5	
Tool Model:	T2	
Performed:	Wed Jul 02 08:27:42 2008	
Calibrator Value:	200.0	GAPI
Background Reading:	54.0	cps
Calibrator Reading:	219.0	cps
Sensitivity:	0.9900	GAPI/cps

Sensor	Offset (ft)	Schematic	Description	Len (ft)	OD (in)	Wt (lb)
GR	13.64		X	3.00	1.69	25.00
			GR-T2 (Titan5)	2.52	1.69	25.00
WVF5	9.49		CBL-T5 (Titan5)	7.23	2.44	110.00
WVF3	8.49					
CCL	0.83		X	3.00	1.69	25.00
			CCL-T6 (Titan6)	2.15	2.75	15.00

Dataset: xtoge33-0371708b.db: field/well/run1/pass1
 Total Length: 17.91 ft
 Total Weight: 200.00 lb
 O.D.: 2.75 in