



SUPERIOR
Black Lick, Pa.
Mercer, Pa.
Wooster, Oh.
Cleveland, Ok.
Trinidad, Co.

DUAL INDUCTION LOG

Company XTO Energy Inc.
Well Golden Eagle 34-06
Field Purgatoire River
County Las Animas State Colorado

Location: API # : 05 071 09539 00

1733' FNL & 1557' FWL

SEC 34 TWP 33S RGE 67W

Permanent Datum Ground Level Elevation 7467'
Log Measured From Ground Level
Drilling Measured From Ground Level

Other Services
CDL
NEUTRON
Elevation
K.B. -----
D.F. -----
G.L. 7467'

Date 7-11-08

Run Number One

Depth Driller 2200'

Depth Logger 2202'

Bottom Logged Interval 2200'

Top Log Interval Surface Casing

Casing Driller 8 5/8" @ 483'

Casing Logger 483'

Bit Size 7 7/8"

Type Fluid in Hole Water

Density / Viscosity ///

pH / Fluid Loss ///

Source of Sample ///

Rm @ Meas. Temp ///

Rmf @ Meas. Temp ///

Rmc @ Meas. Temp ///

Source of Rmf / Rmc ///

Rm @ BHT ///

Time Circulation Stopped 7:30 P.M.

Time Logger on Bottom 9:55 P.M.

Maximum Recorded Temperature 101 DEG F

Equipment Number T697

Location Trinidad

Recorded By J. Cappellucci

Witnessed By Mr. Don Johnson

<<< Fold Here >>>

All interpretations are opinions based on inferences from electrical or other measurements and we cannot and do not guarantee the accuracy or correctness of any interpretation, and we shall not, except in the case of gross or willful negligence on our part, be liable or responsible for any loss, costs, damages, or expenses incurred or sustained by anyone resulting from any interpretation made by any of our officers, agents or employees. These interpretations are also subject to our general terms and conditions set out in our current Price Schedule.

Comments

Well Directions:

First Bosque entrance, take right at Cherry Canyon, at Y stay left, go thru green gate, take right just before Compressor station 5, dead end on location.

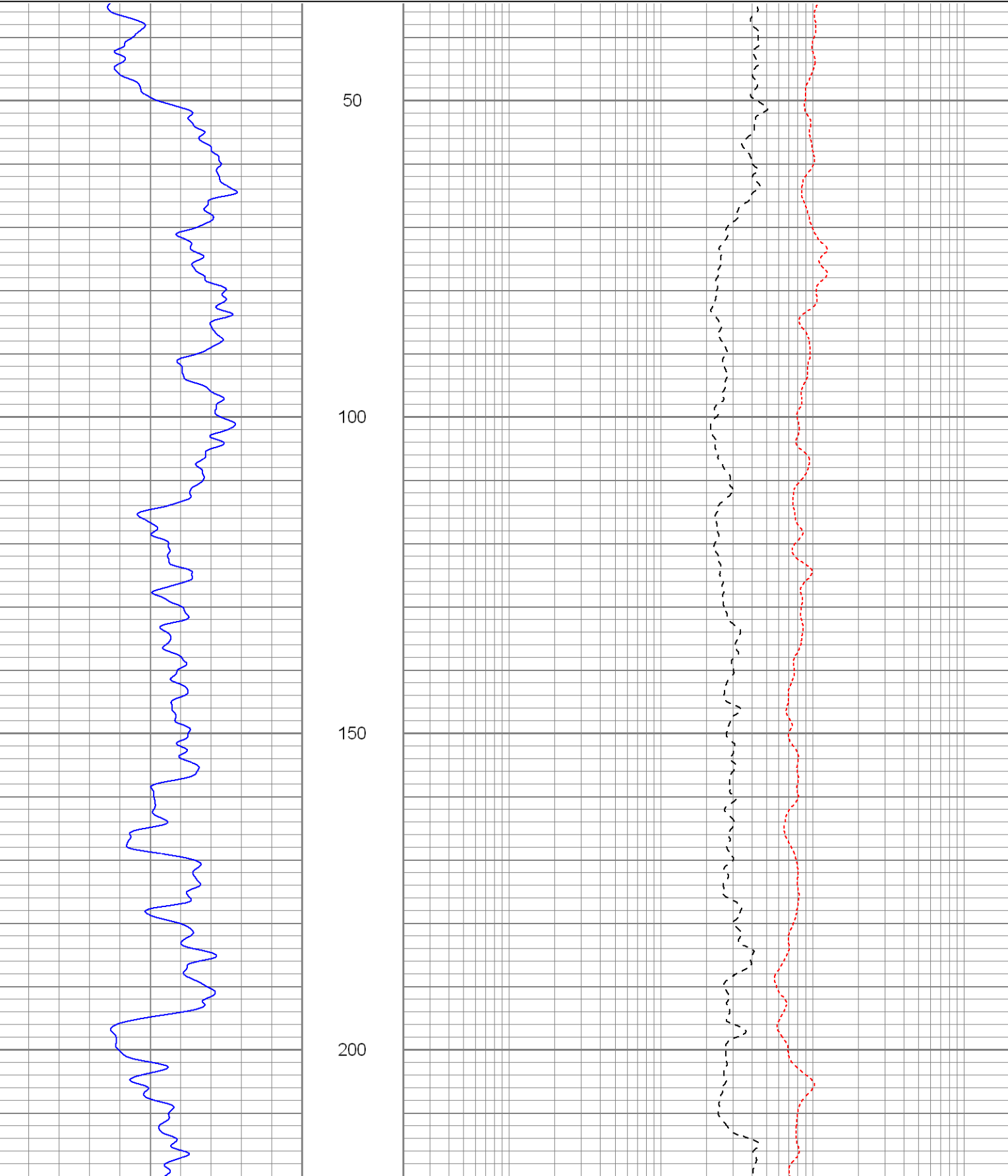


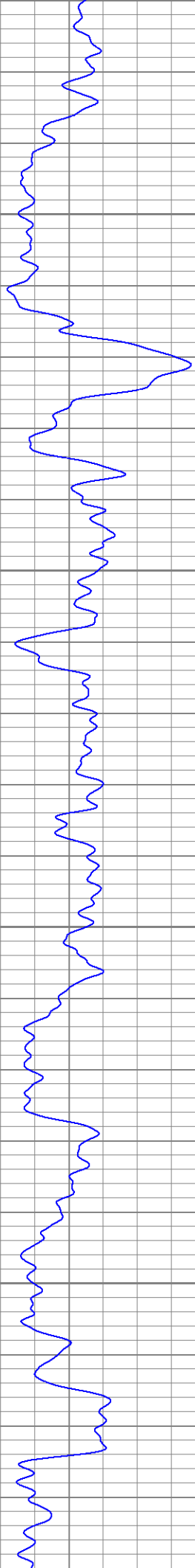
SUPERIOR
Black Lick, Pa.
Mercer, Pa.
Wooster, Oh.
Cleveland, Ok.
Trinidad, Co.

Main Pass

Database File: xtoge3406.db
Dataset Pathname: pass2.2
Presentation Format: dil
Dataset Creation: Fri Jul 11 23:24:36 2008 by Calc Open-Cased 071220
Charted by: Depth in Feet scaled 1:240

0	GR (GAPI)	200	0.2	RILM (Ohm-m)	2000
-200	SP (mV)	0	0.2	RILD (Ohm-m)	2000
			0.2	RLL3 (Ohm-m)	2000



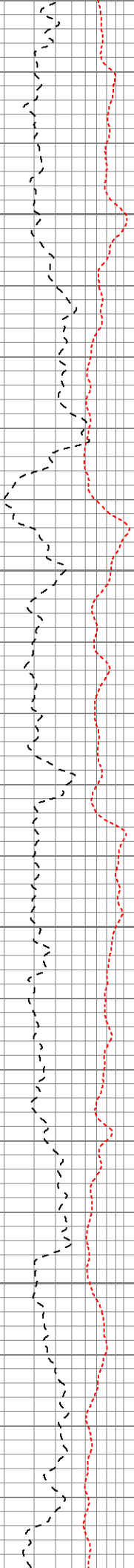


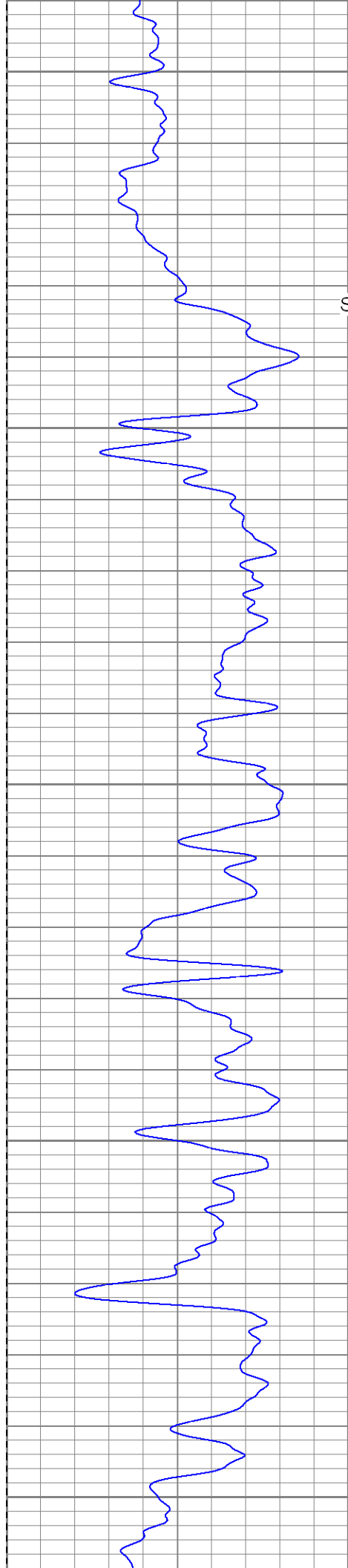
250

300

350

400





450

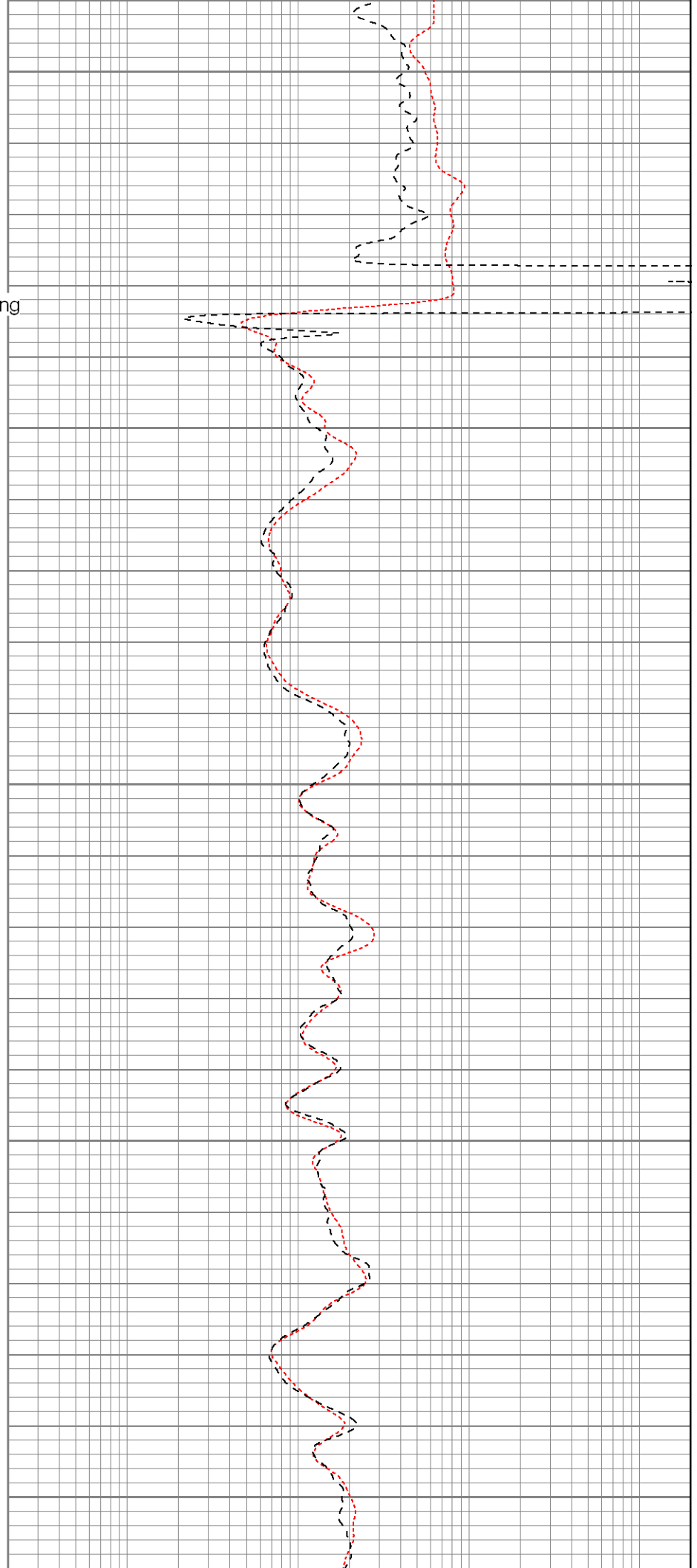
Surface Casing

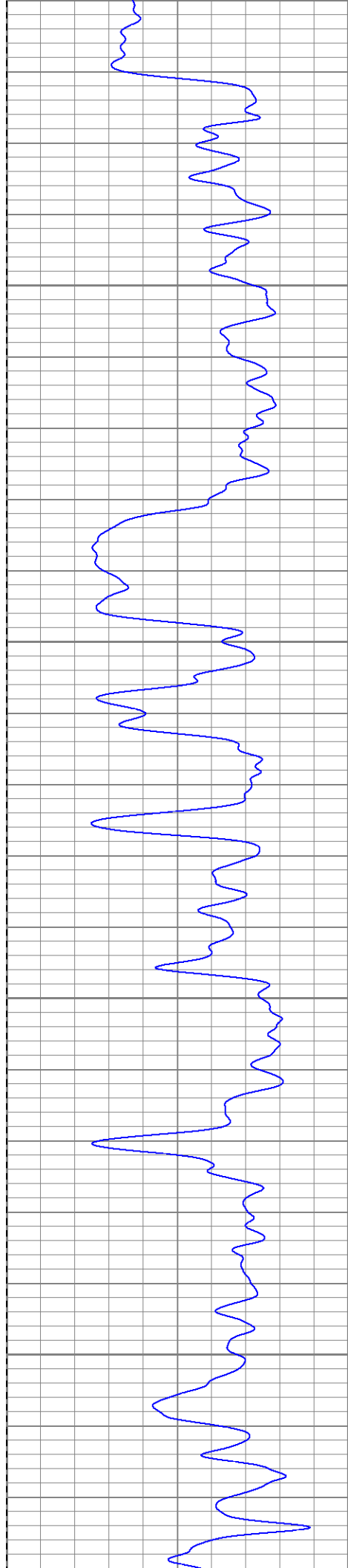
500

550

600

650



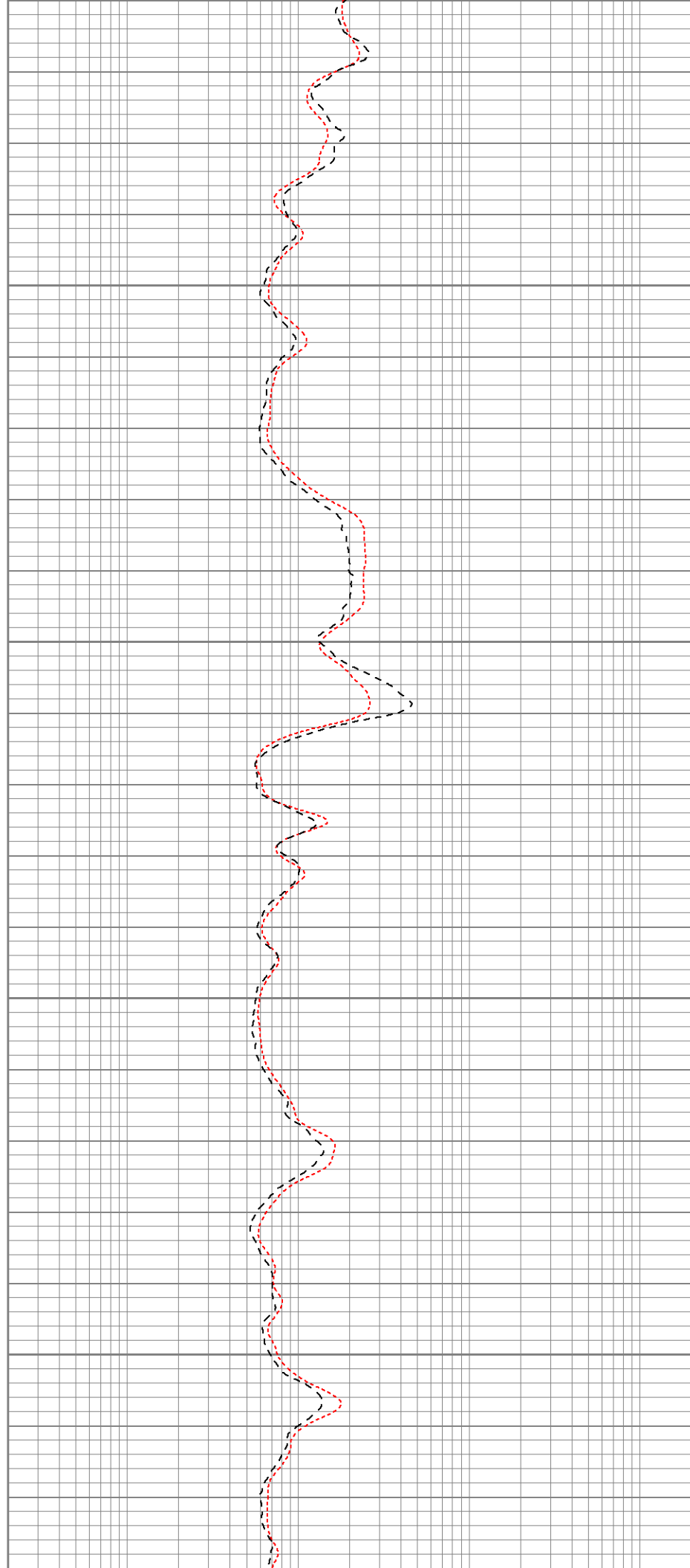


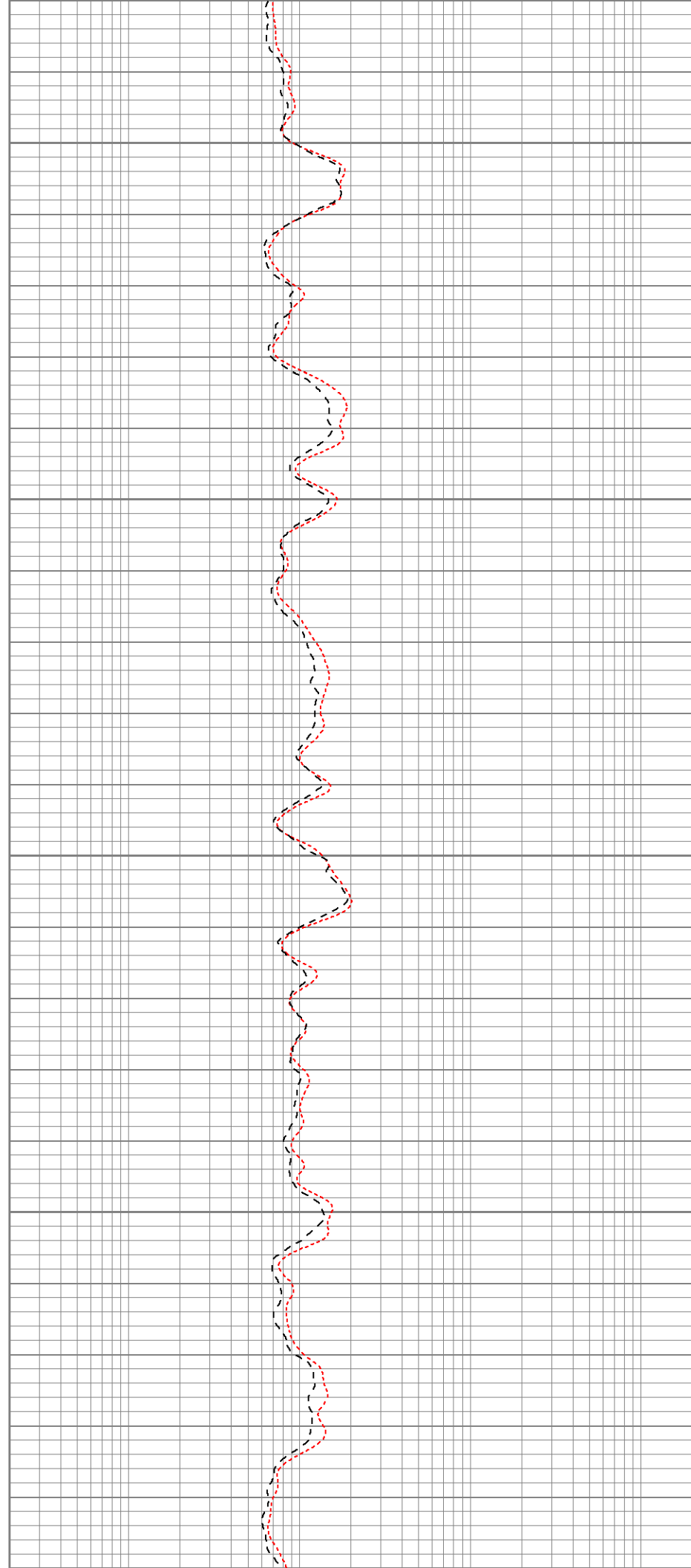
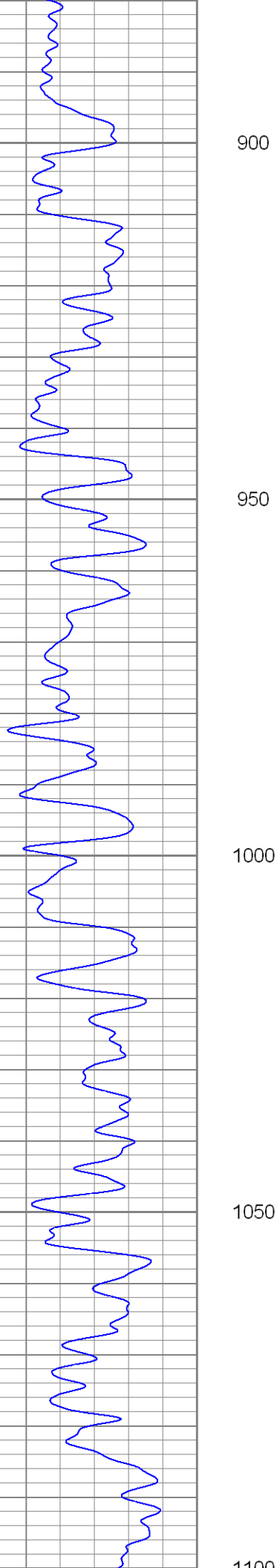
700

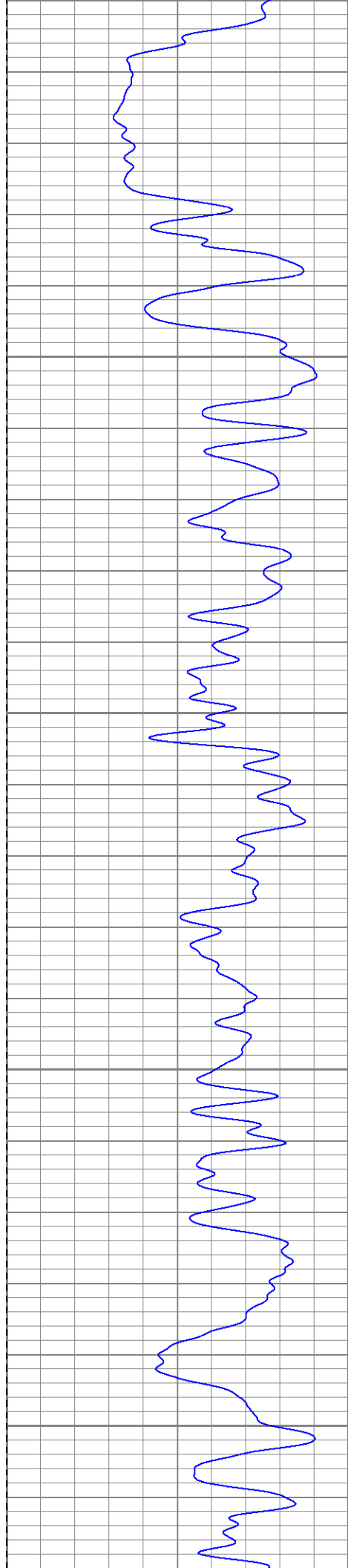
750

800

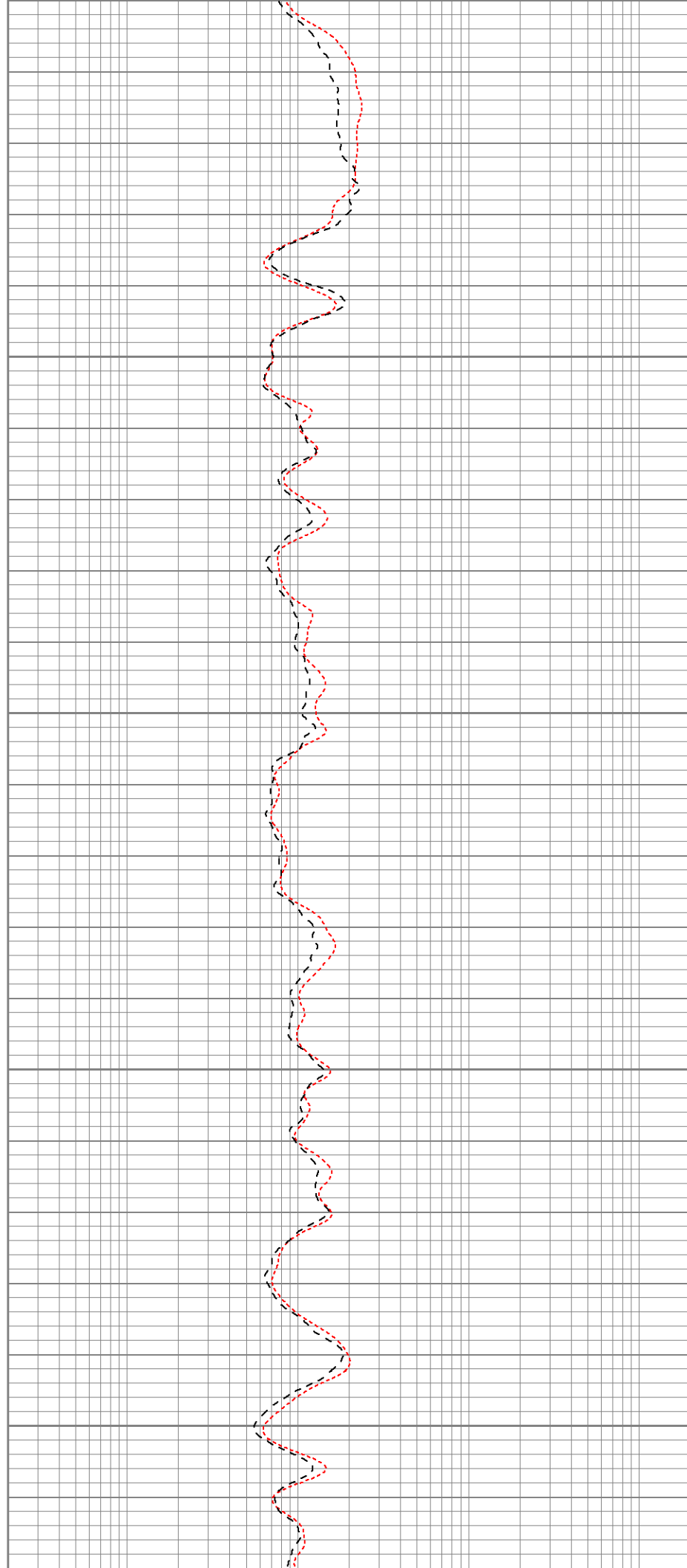
850

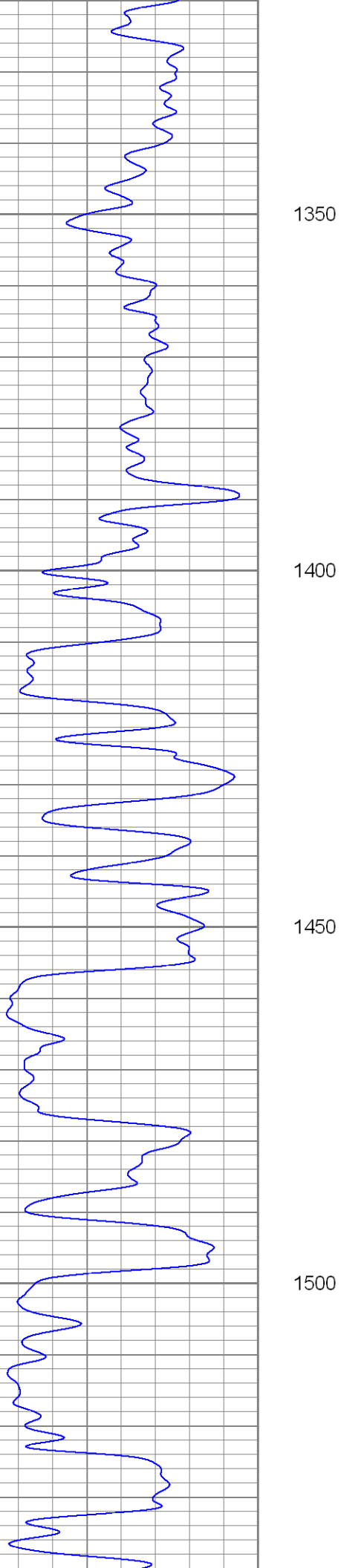






1100
1150
1200
1250
1300



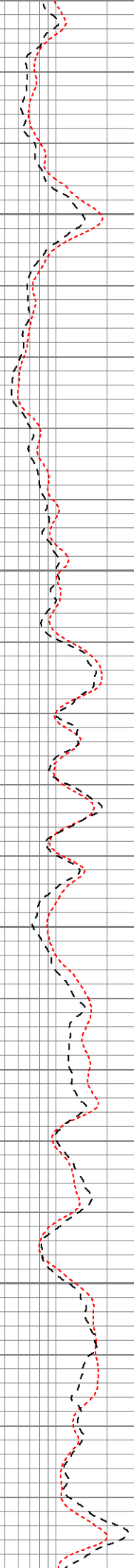


1350

1400

1450

1500



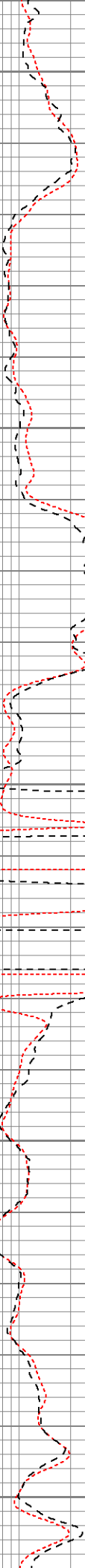
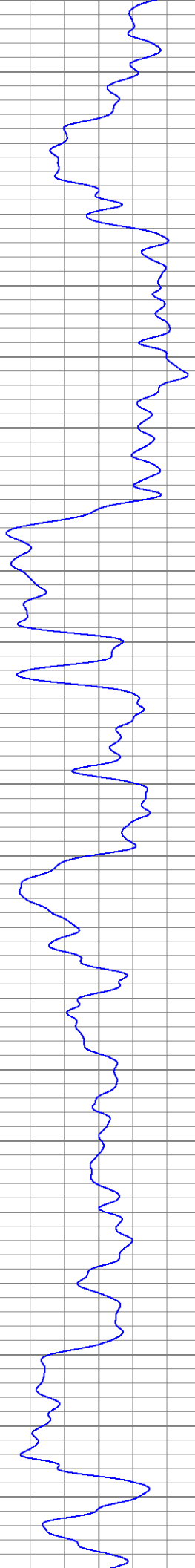
1550

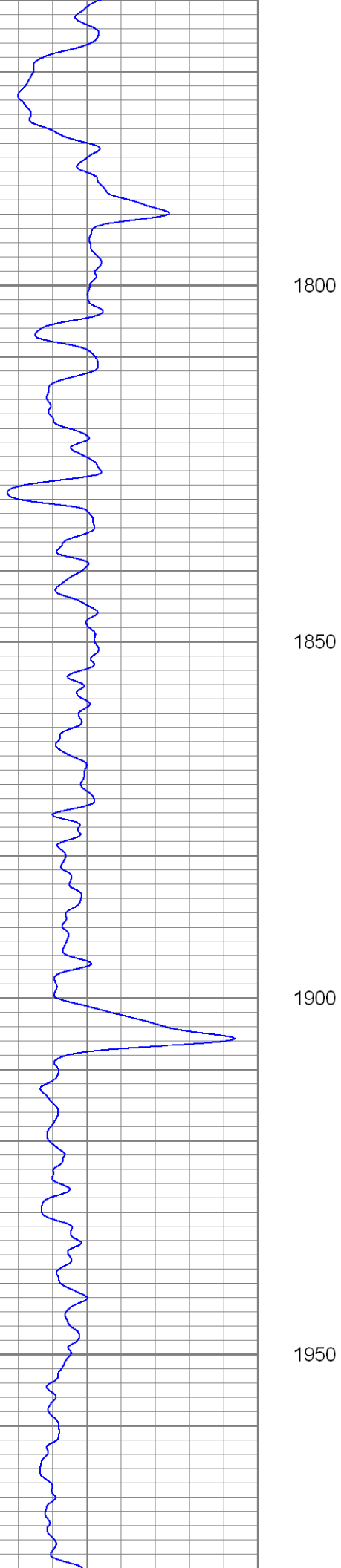
1600

1650

1700

1750



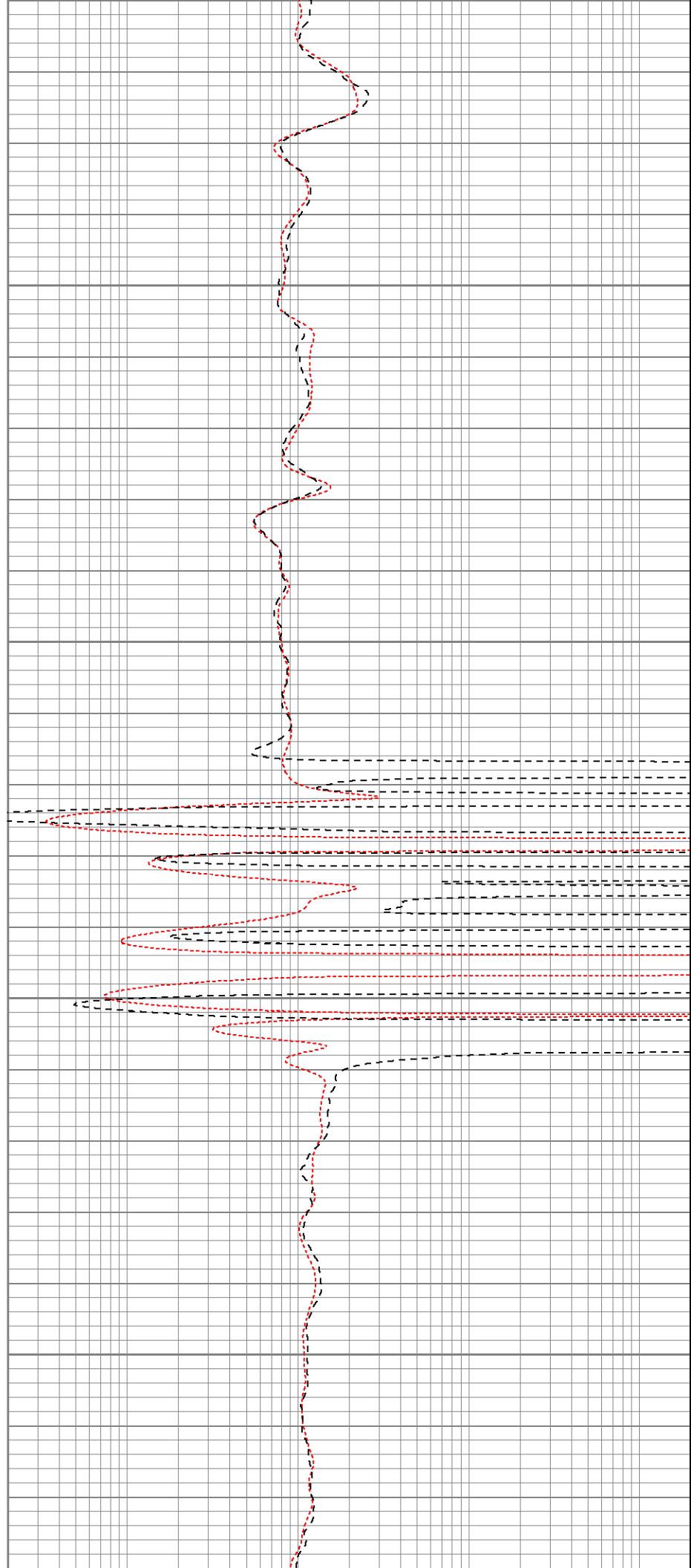


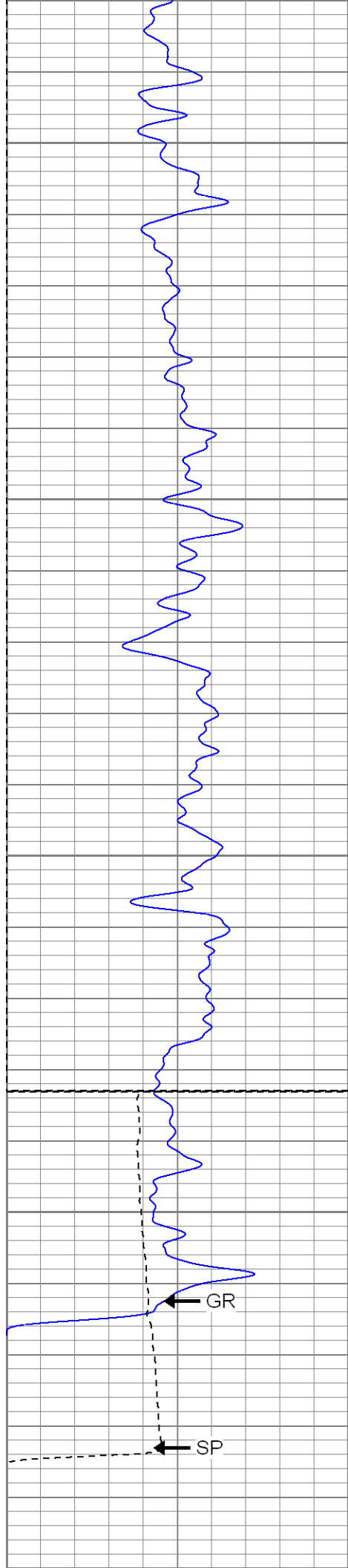
1800

1850

1900

1950





2000

2050

2100

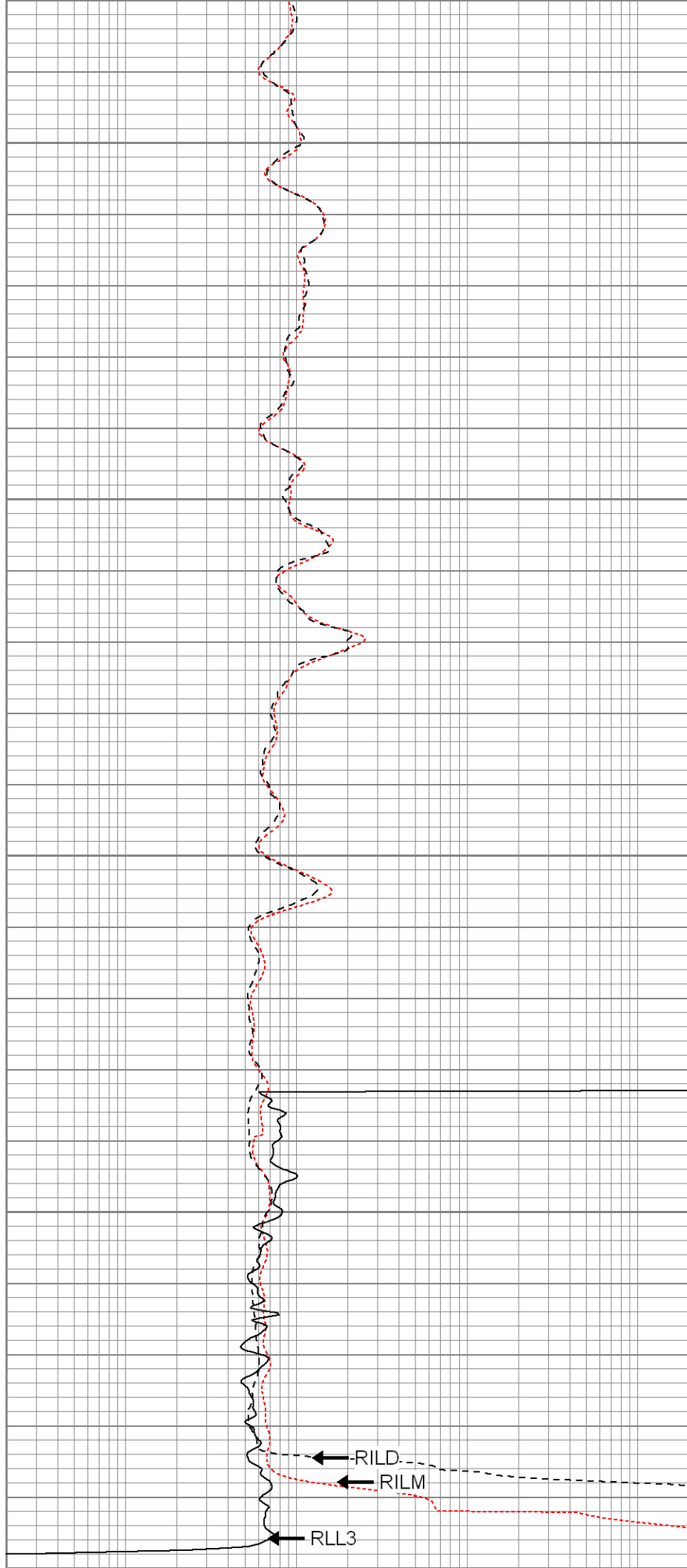
Fluid Level

2150

GR

SP

2200



RILD

RILM

RLL3

0	GR (GAPI)	200
-200	SP (mV)	0

0.2	RILM (Ohm-m)	2000
0.2	RILD (Ohm-m)	2000
0.2	RLL3 (Ohm-m)	2000



SUPERIOR

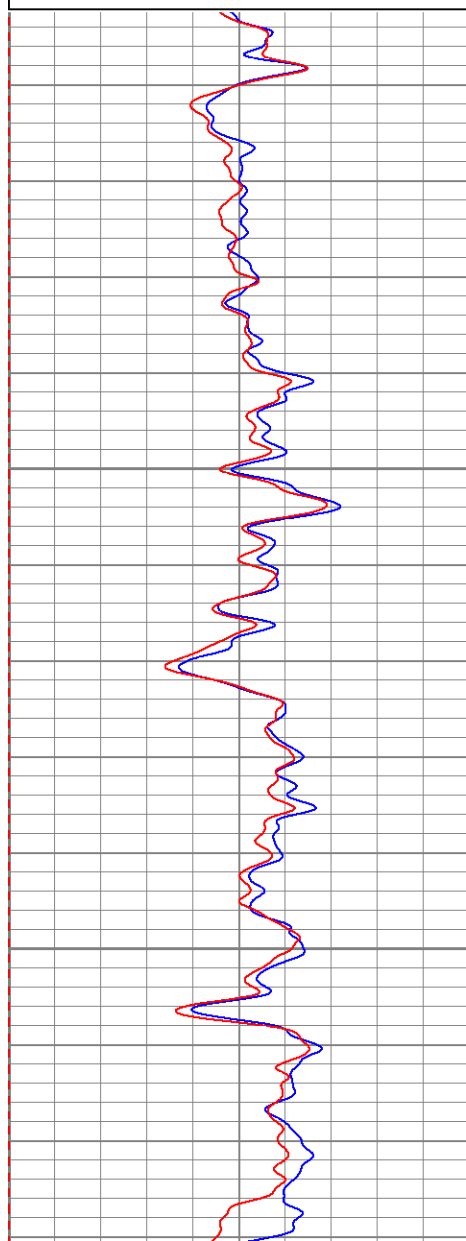
Black Lick, Pa.
Mercer, Pa.
Wooster, Oh.
Cleveland, Ok.
Trinidad, Co.

Repeat Pass

Database File: xtoge3406.db
Dataset Pathname: pass1.2
Presentation Format: dil
Dataset Creation: Fri Jul 11 22:27:17 2008 by Calc Open-Cased 071220
Charted by: Depth in Feet scaled 1:240

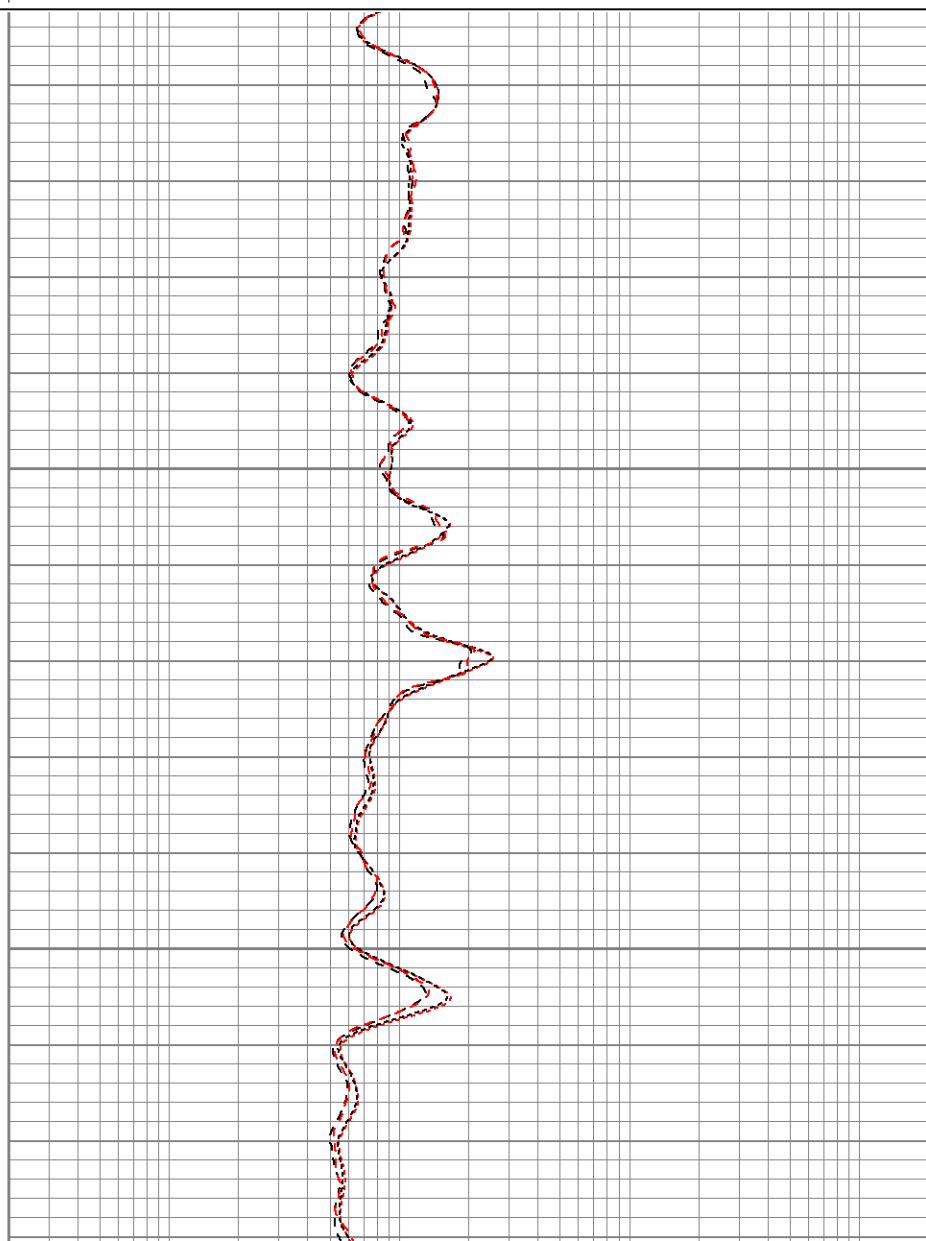
0	GR (GAPI)	200
-200	SP (mV)	0
0	GR-repeat (GAPI)	200
-200	SP-repeat (mV)	0

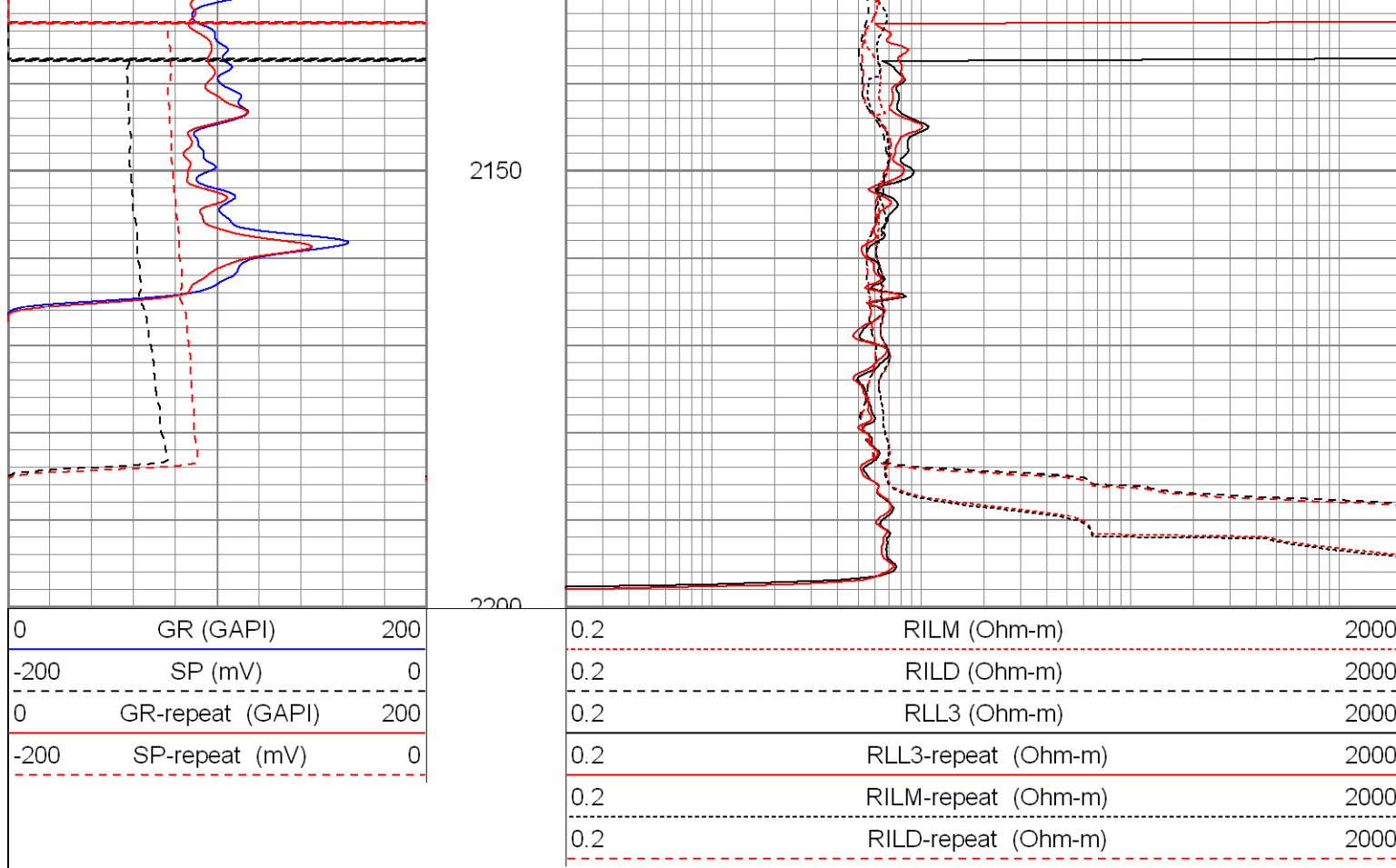
0.2	RILM (Ohm-m)	2000
0.2	RILD (Ohm-m)	2000
0.2	RLL3 (Ohm-m)	2000
0.2	RLL3-repeat (Ohm-m)	2000
0.2	RILM-repeat (Ohm-m)	2000
0.2	RILD-repeat (Ohm-m)	2000



2050

2100






Calibration Report										
Database File:	xtoge3406.db									
Dataset Pathname:	pass1									
Dataset Creation:	Fri Jul 11 21:55:02 2008 by Log Open-Cased 071220									
Dual Induction Calibration Report										
Serial-Model:			20017-P							
Surface Cal Performed:			Mon Jul 07 18:03:18 2008							
Downhole Cal Performed:			Mon Jul 07 18:03:22 2008							
Surface Calibration										
		Readings					References			
Loop:	Air	Loop		Air	Loop		m	b		
Deep	0.013	0.673	V	0.000	500.000	mmho-m	758.245	-10.209		
Medium	-0.009	0.777	V	0.000	550.000	mmho-m	699.139	6.426		
Internal:	Zero	Cal		Zero	Cal		m	b		
Deep	0.014	0.674	V	0.000	500.000	mmho-m	758.497	-10.898		
Medium	-0.010	0.778	V	0.000	500.000	mmho-m	634.960	6.127		
Downhole Calibration										
		Readings					References			
Internal:	Zero	Cal		Zero	Cal		m	b		
Deep	0.245	500.171	mmho-m	0.685	500.518	mmho-m	1.000	0.440		
Medium	-0.427	550.627	mmho-m	-0.320	550.218	mmho-m	0.999	0.106		
Shallow	0.047	5.403	V	10.000	1000.000	Ohm-m	124.000	2.000		

Temperature Calibration Report				
Serial Number:	2542T			
Tool Model:	CDLP			
Performed:	Fri Jun 27 10:52:07 2008			
	Reference	Reading		
Low Reference:	55.00 degF	3.11	V	
High Reference:	160.00 degF	5.35	V	
Gain:	46.88			
Offset:	-90.78			
Delta Spacing	1			

Compensated Density Calibration Report					
Serial-Model:			2542-T2		
Source / Verifier:			/		
Master Calibration Performed:			Thu Jun 26 08:09:20 2008		
Master Calibration					
	Density		Far Detector	Near Detector	
Magnesium	1.710	g/cc	725.64	339.44	cps
Aluminum	2.590	g/cc	162.65	232.88	cps
Spine Angle = 75.86			Density/Spine Ratio = 0.571		
	Size		Reading		
Small Ring	8.00	in	1.33	V	
Large Ring	14.00	in	2.67	V	

Gamma Ray Calibration Report				
Serial Number:	2001			
Tool Model:	OH			
Performed:	Mon Jul 07 18:02:27 2008			
Calibrator Value:	1.0	GAPI		
Background Reading:	0.0	cps		
Calibrator Reading:	1.0	cps		
Sensitivity:	0.2500	GAPI/cps		

Neutron Calibration Report				
Serial Number:	5108			
Tool Model:	PROBE			
Performed:	Thu Jun 26 12:08:49 2008			
Calibrator Value:	1	NAPI		
Calibrator Reading:	1	cps		
Sensitivity:	1	NAPI/cps		

Sensor	Offset (ft)	Schematic	Description	Len (ft)	OD (in)	Wt (lb)
NEU	40.63		None	0.75	1.50	5.00
			NEU-PROBE (5108)	4.92	3.63	85.00

