



SUPERIOR
WELL SERVICES
Black Lick, Pa.
Mercer, Pa.
Wooster, Oh.
Cleveland, Ok.
Trinidad, Co.

CEMENT BOND LOG

Company XTO Energy Inc.

Well Golden Eagle 33-04

Field Purgatorie River

County Las Animas State CO

Location: API # : 05 071 09507 00

SEC 33 TWP 32S RGE 67W

Permanent Datum Ground level Elevation 7491'

Log Measured From Ground Level

Drilling Measured From Ground Level

Date 7-11-08

Run Number One

Depth Driller 2150'

Depth Logger 1807'

Bottom Logged Interval 1805'

Top Log Interval Surface

Open Hole Size 7 7/8"

Type Fluid Water

Density / Viscosity ///

Max. Recorded Temp. ///

Estimated Cement Top Surface

Time Well Ready ROA

Time Logger on Bottom 8:30 a.m.

Equipment Number T697

Location Trinidad

Recorded By J.Cappellucci

Witnessed By Travis Gourdin

Run Number Bit From To Size Weight From To

Casing Record Size Wgt/Ft Top Bottom

Surface String 8 5/8" 00 493'

Prot. String 00 NA

Production String 5.5" 00 2088'

Liner

<<< Fold Here >>>

All interpretations are opinions based on inferences from electrical or other measurements and we cannot and do not guarantee the accuracy or correctness of any interpretation, and we shall not, except in the case of gross or willful negligence on our part, be liable or responsible for any loss, costs, damages, or expenses incurred or sustained by anyone resulting from any interpretation made by any of our officers, agents or employees. These interpretations are also subject to our general terms and conditions set out in our current Price Schedule.

Comments

Well Directions:

Hwy 12 Past Weston, turn left across from Substation, go thru gate, immediate right first left, take right on GE 33-03, dead end on location.

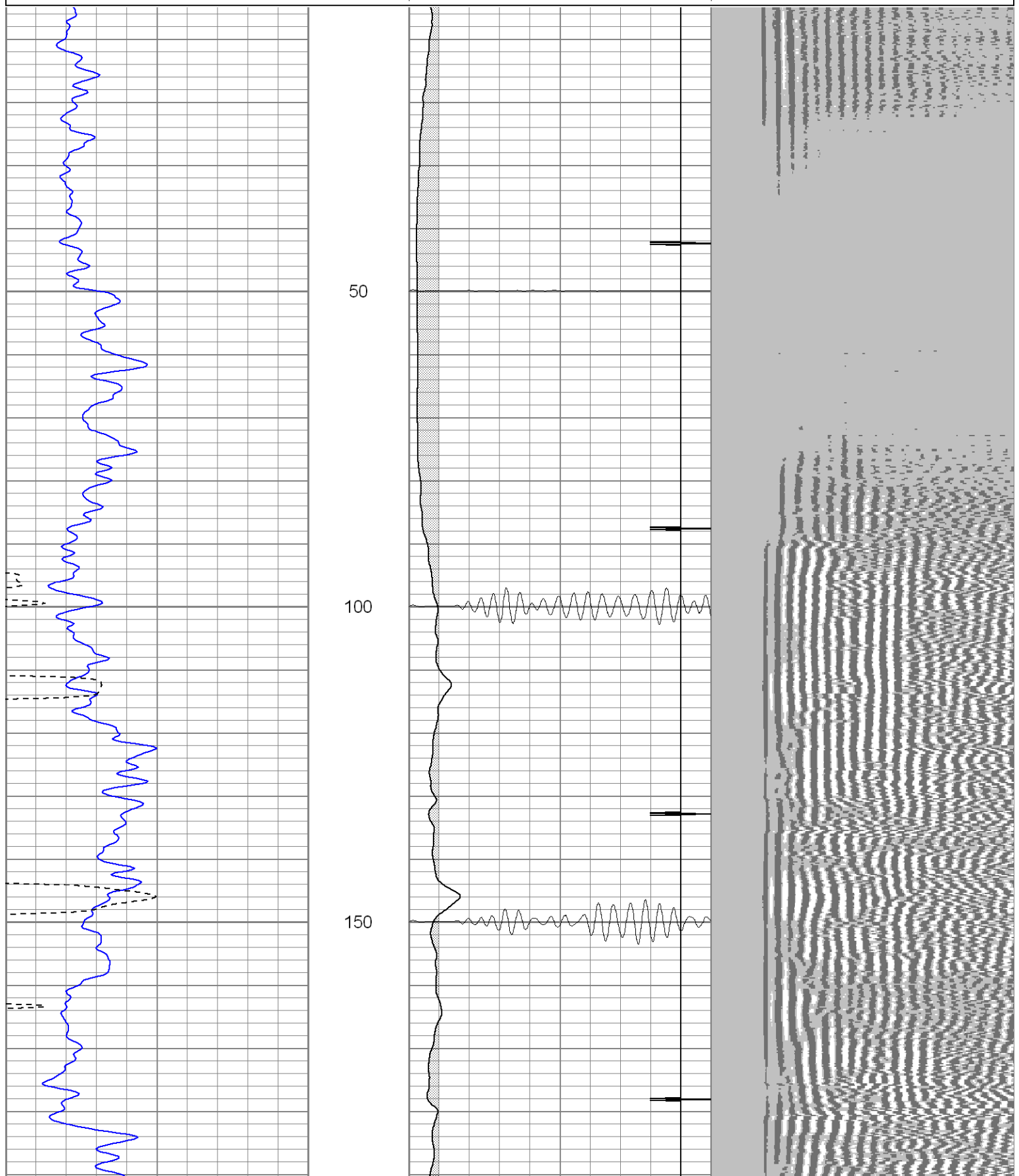


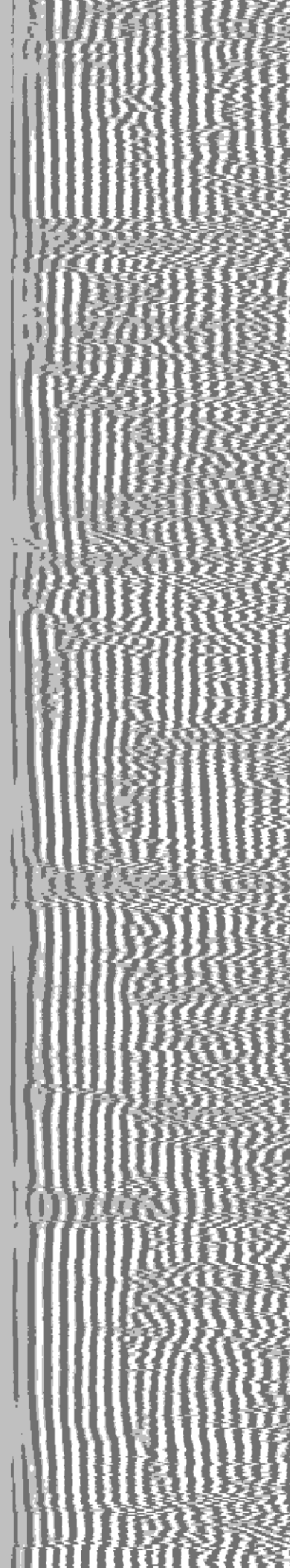
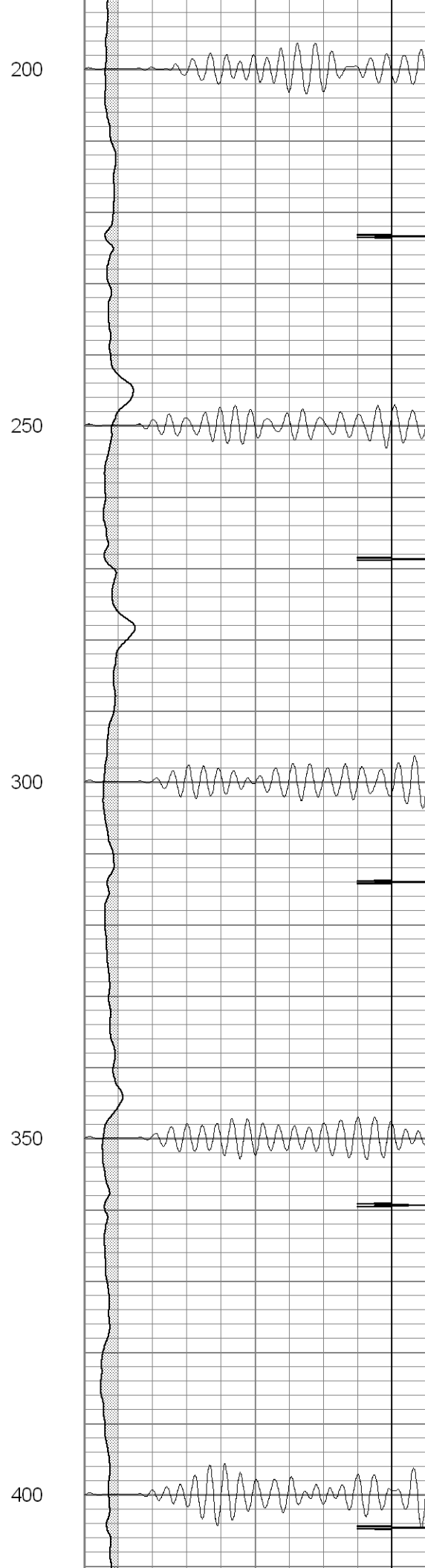
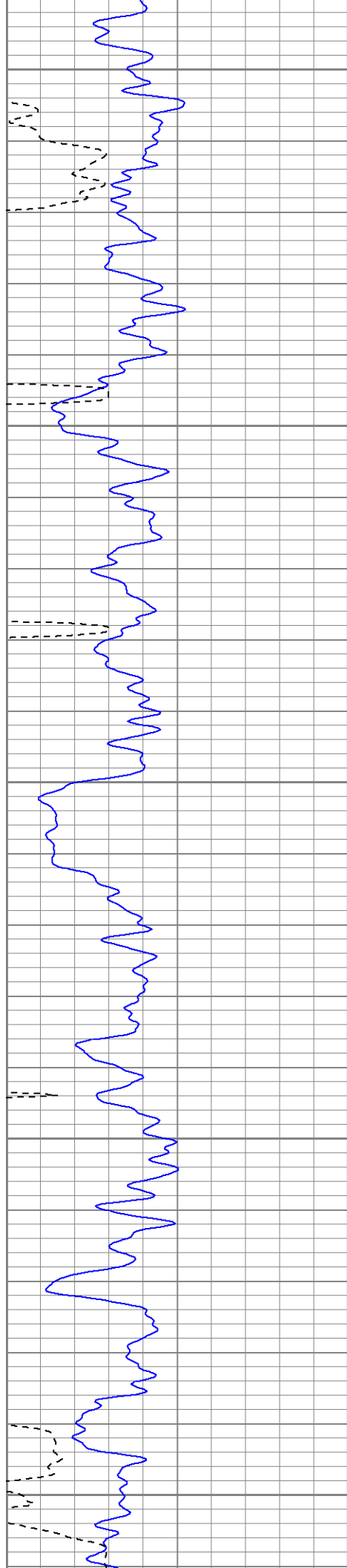
SUPERIOR
Black Lick, Pa.
Mercer, Pa.
Wooster, Oh.
Cleveland, Ok.
Trinidad, Co.

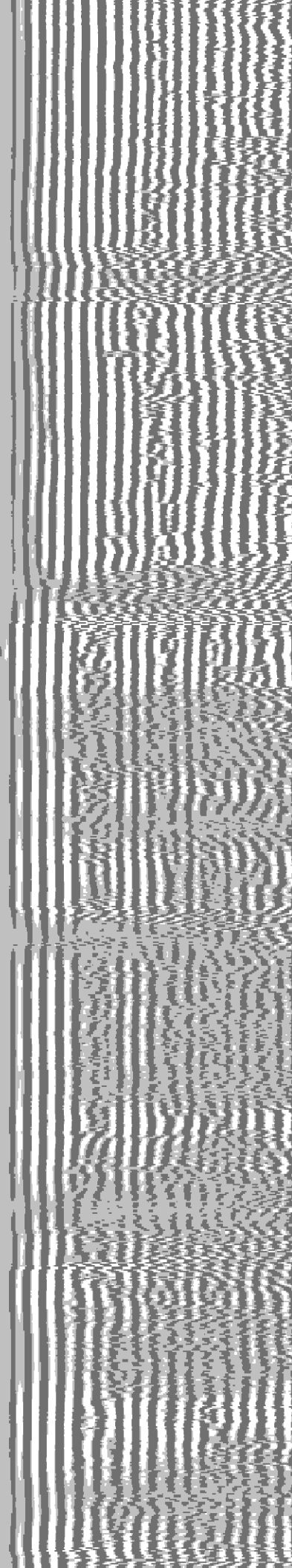
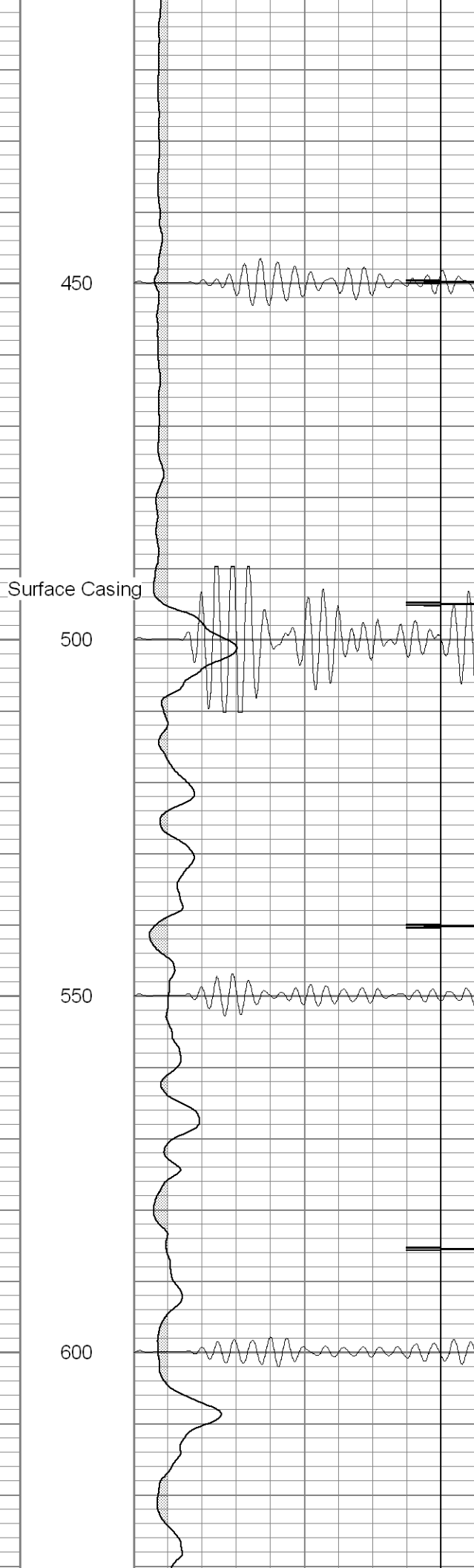
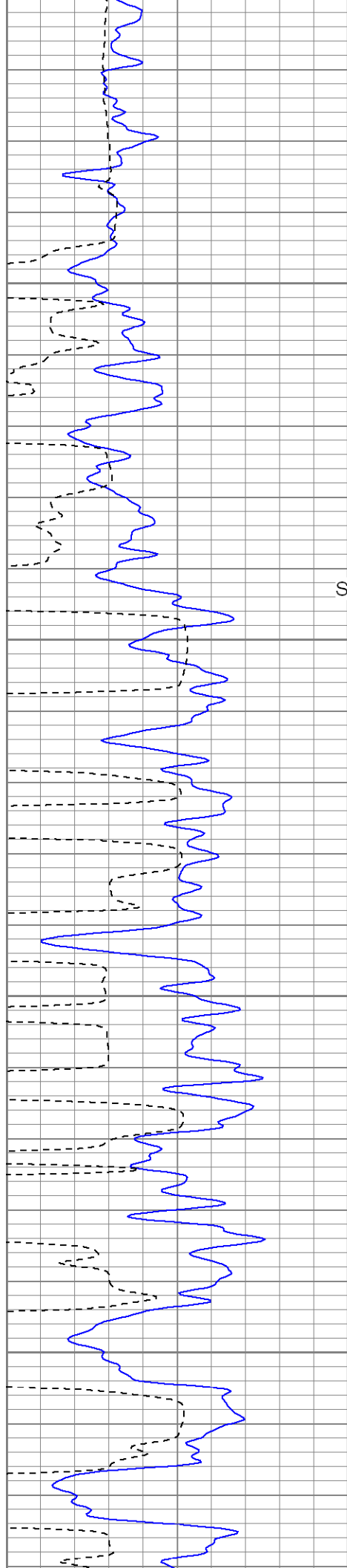
Main Pass

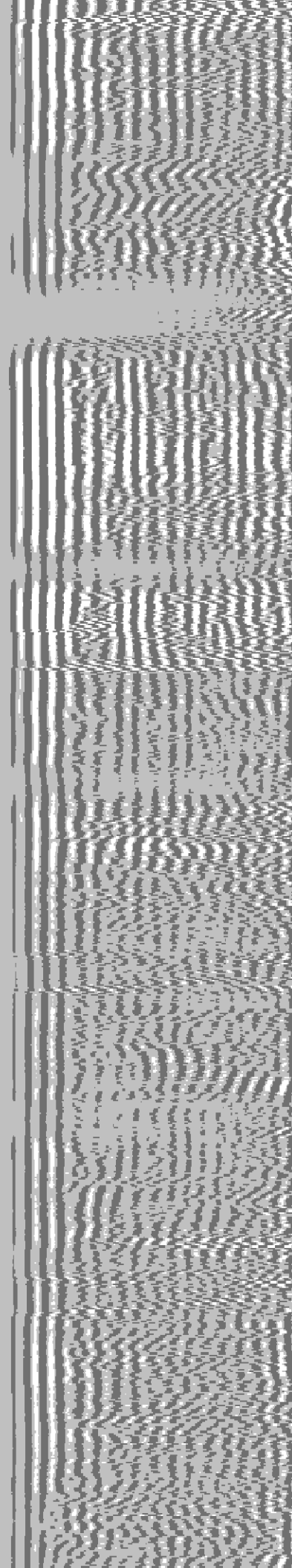
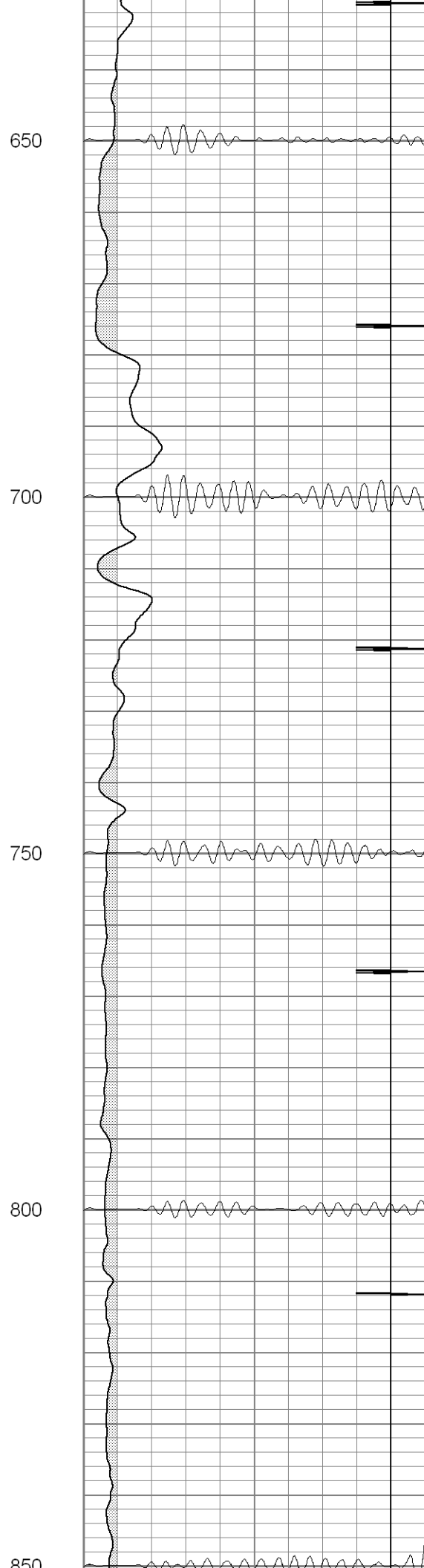
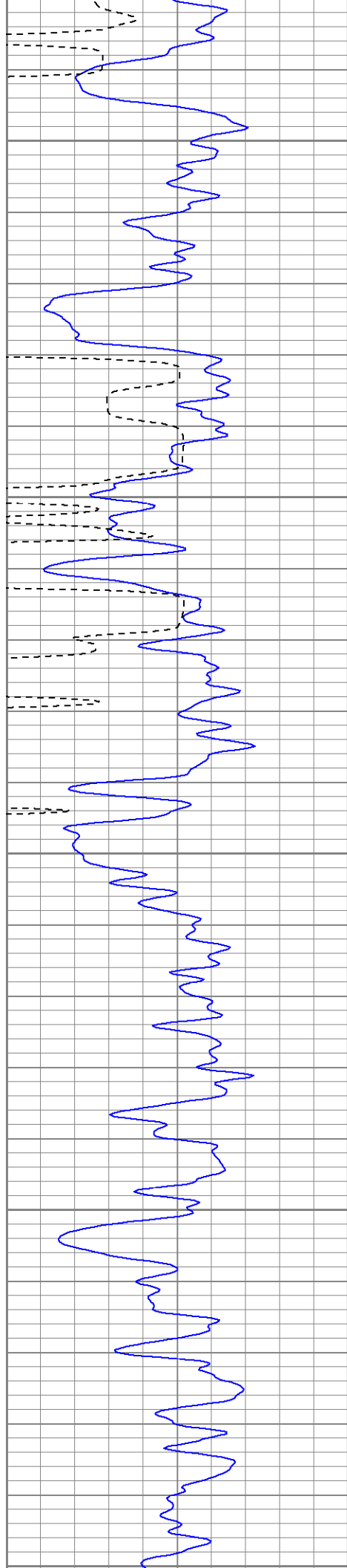
Database File: c:\warrior\data\xt\xtoge330471108b.db
Dataset Pathname: pass2.1
Presentation Format: cblrt
Dataset Creation: Fri Jul 11 09:23:51 2008 by Calc Open-Cased 071220
Charted by: Depth in Feet scaled 1:240

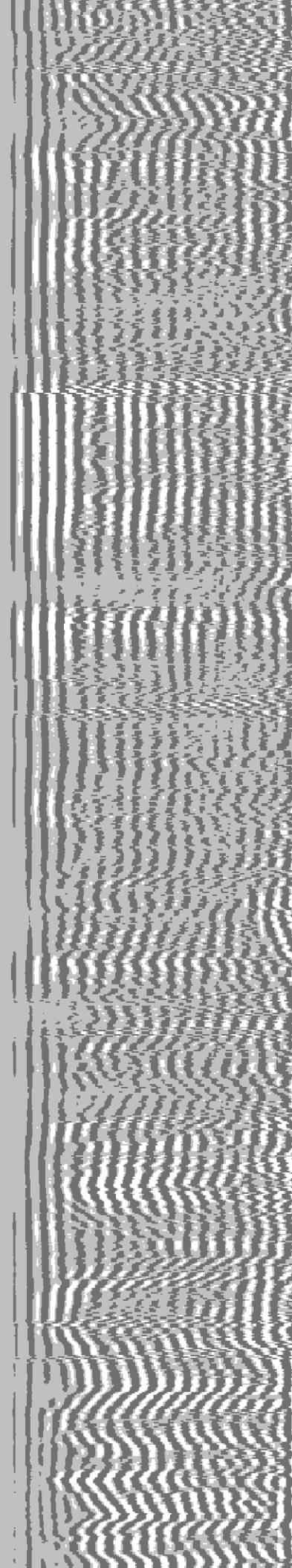
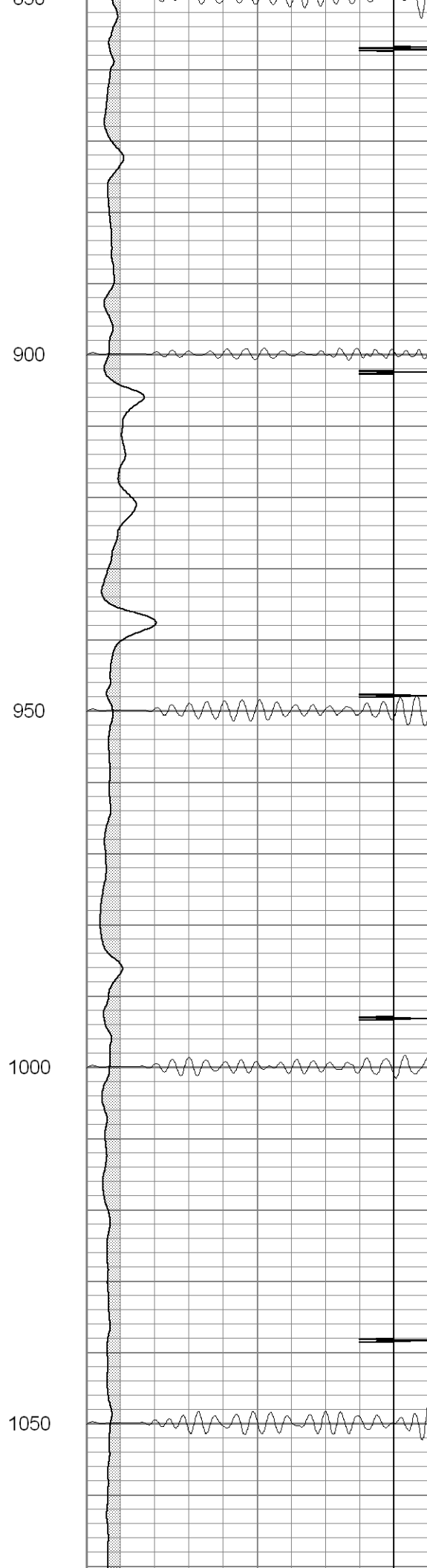
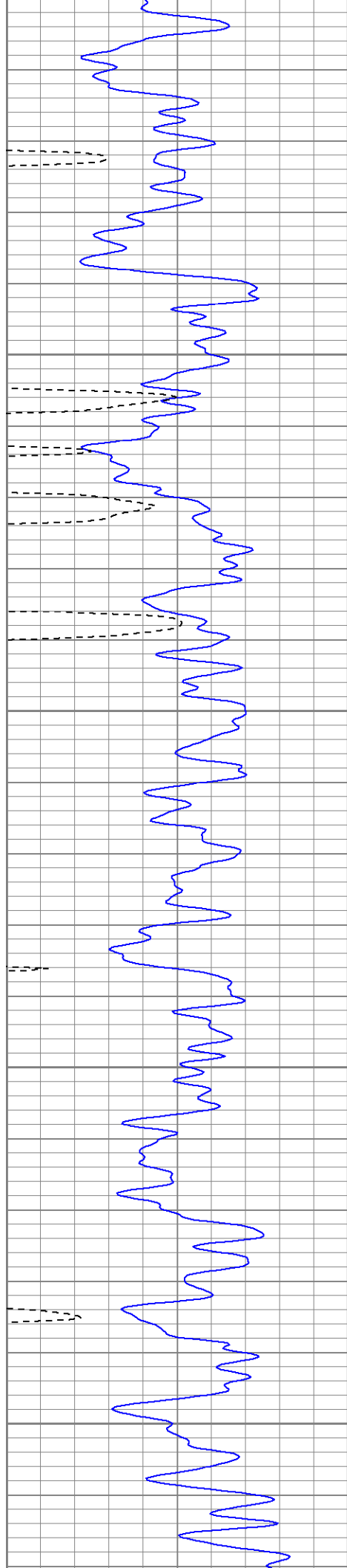
0	GR (GAPI)	200	0	AMP3 (mV)	100	200	Variable Density	1200
400	TT3 (usec)	200	18	CCL	-2			
			200	CBL5	1200			

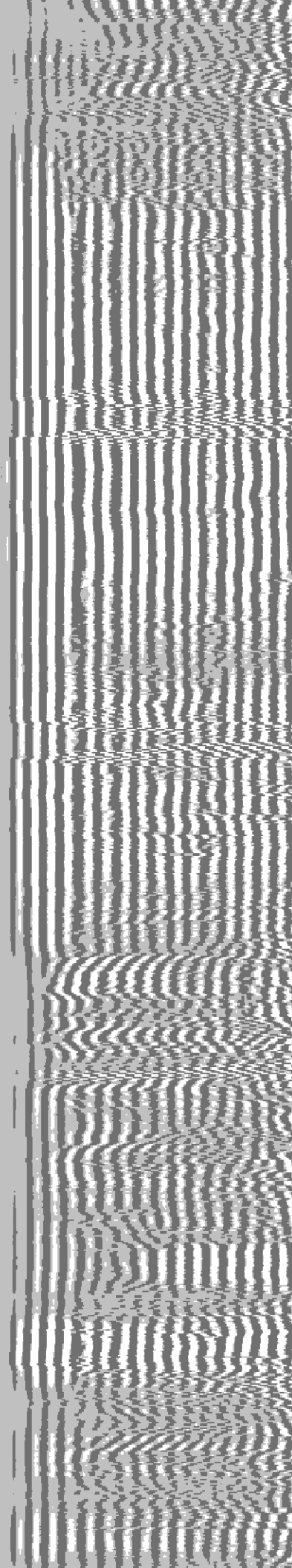
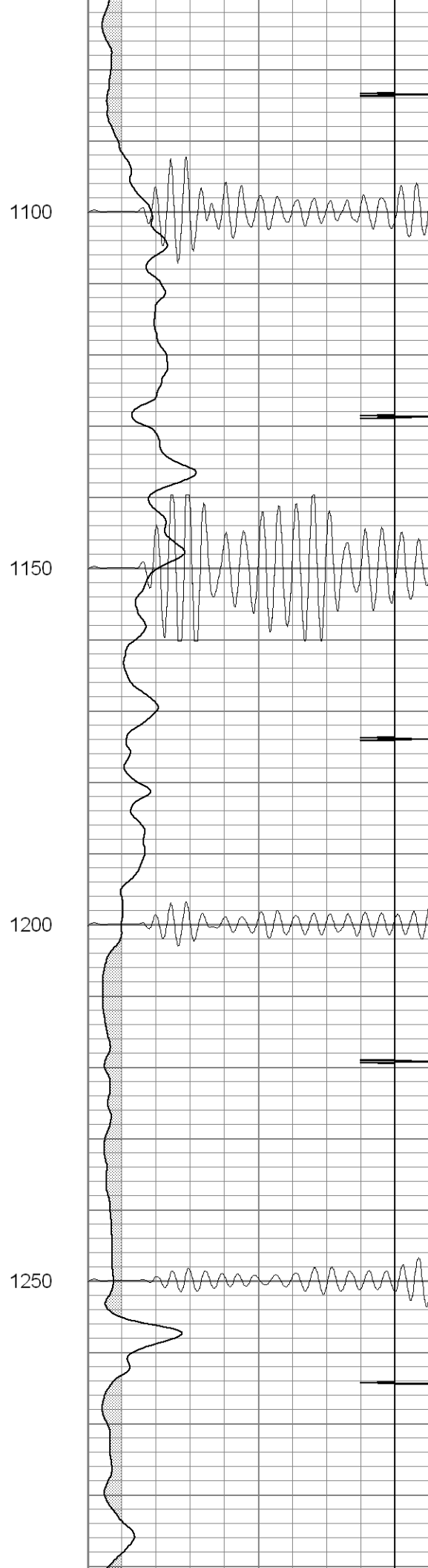
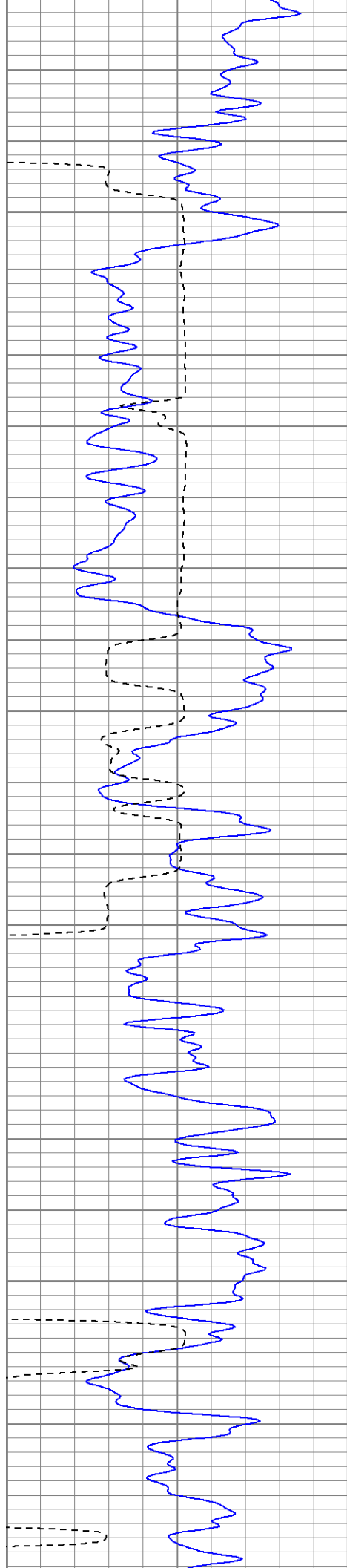


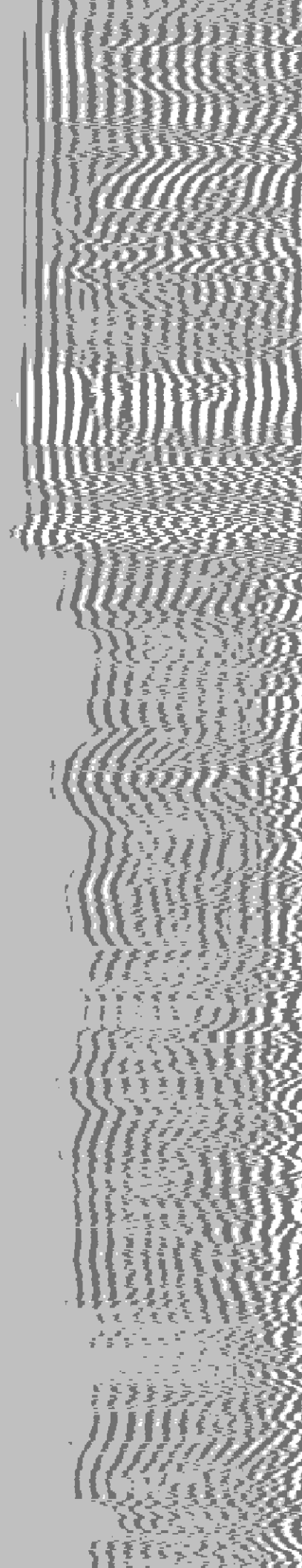
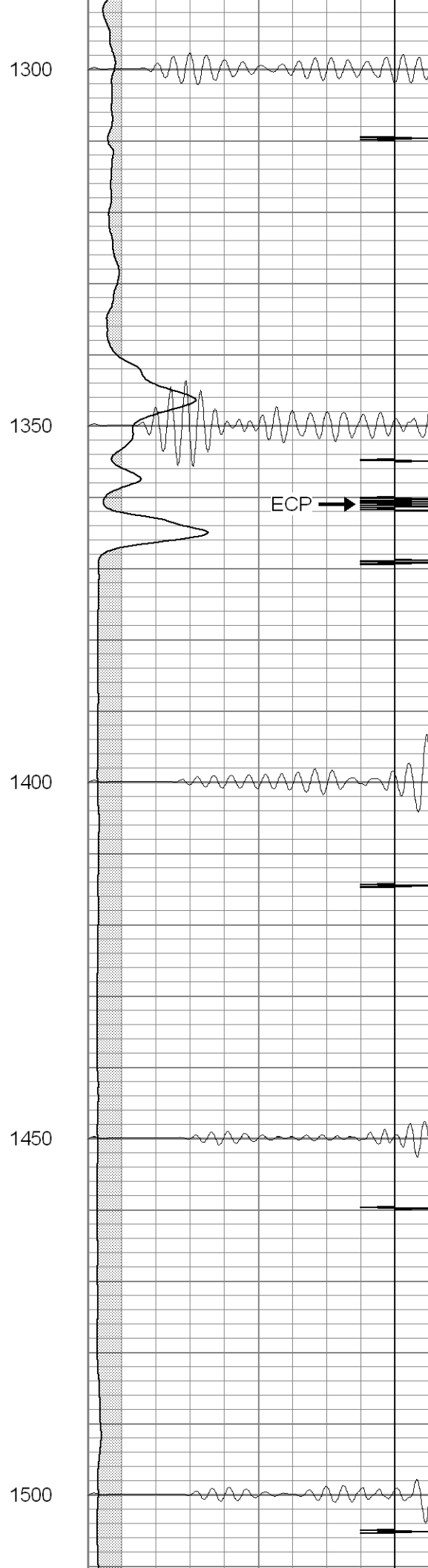
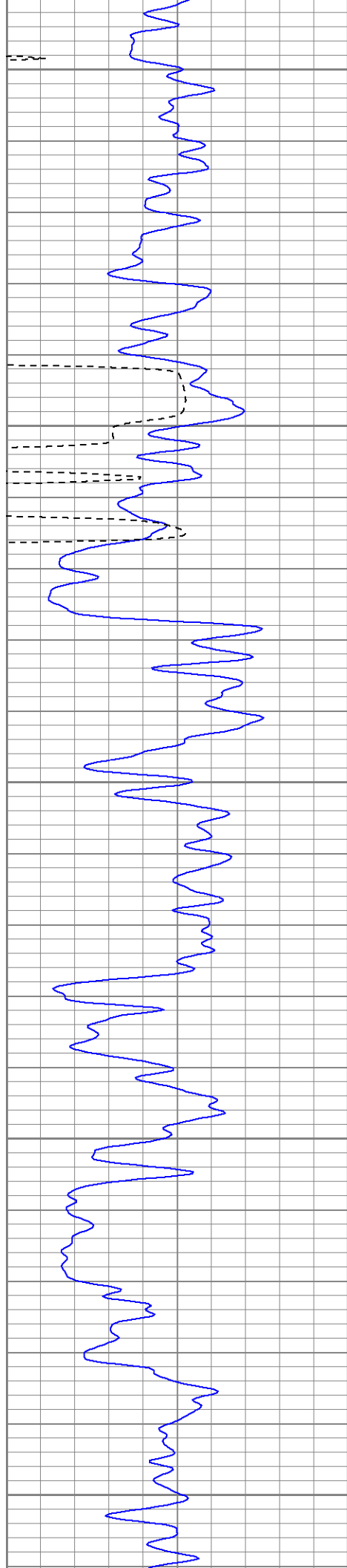


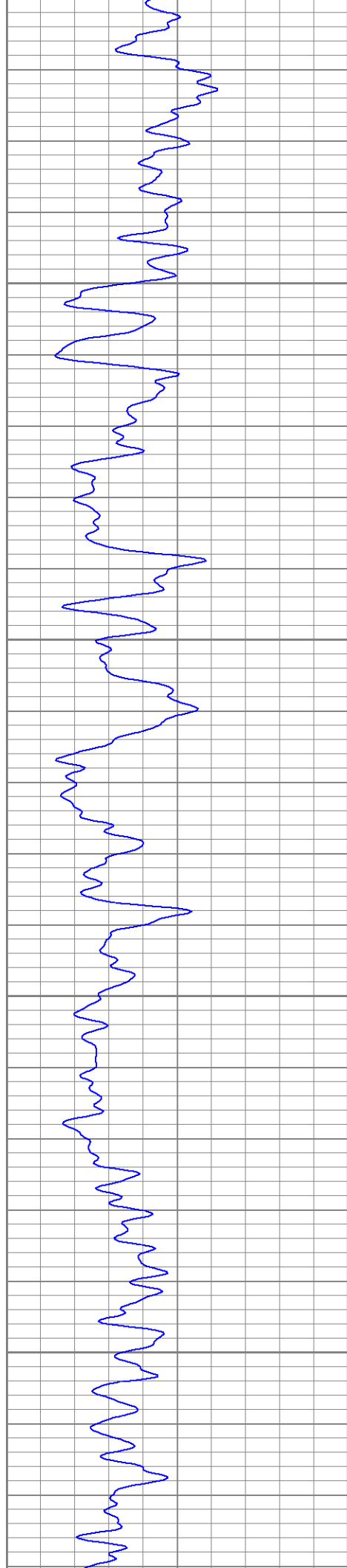










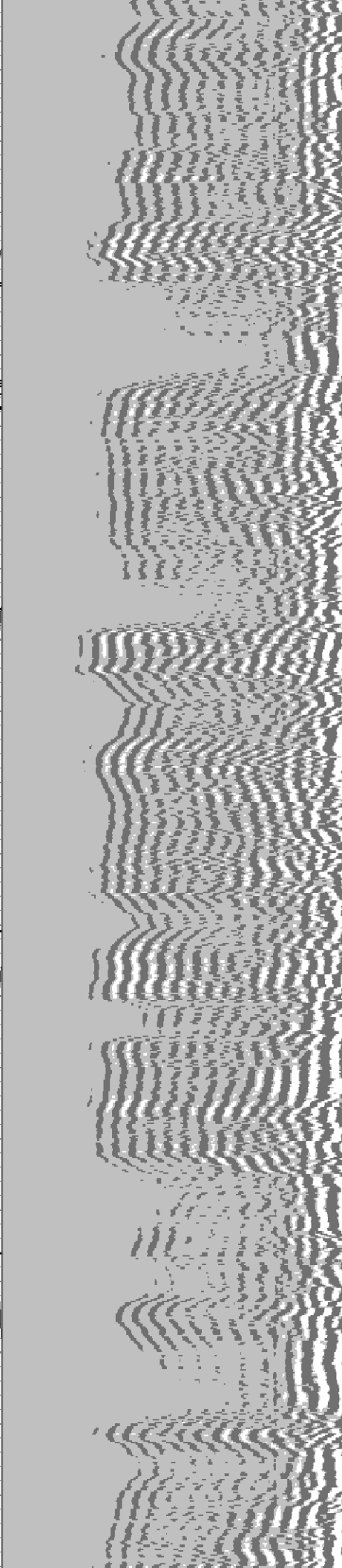


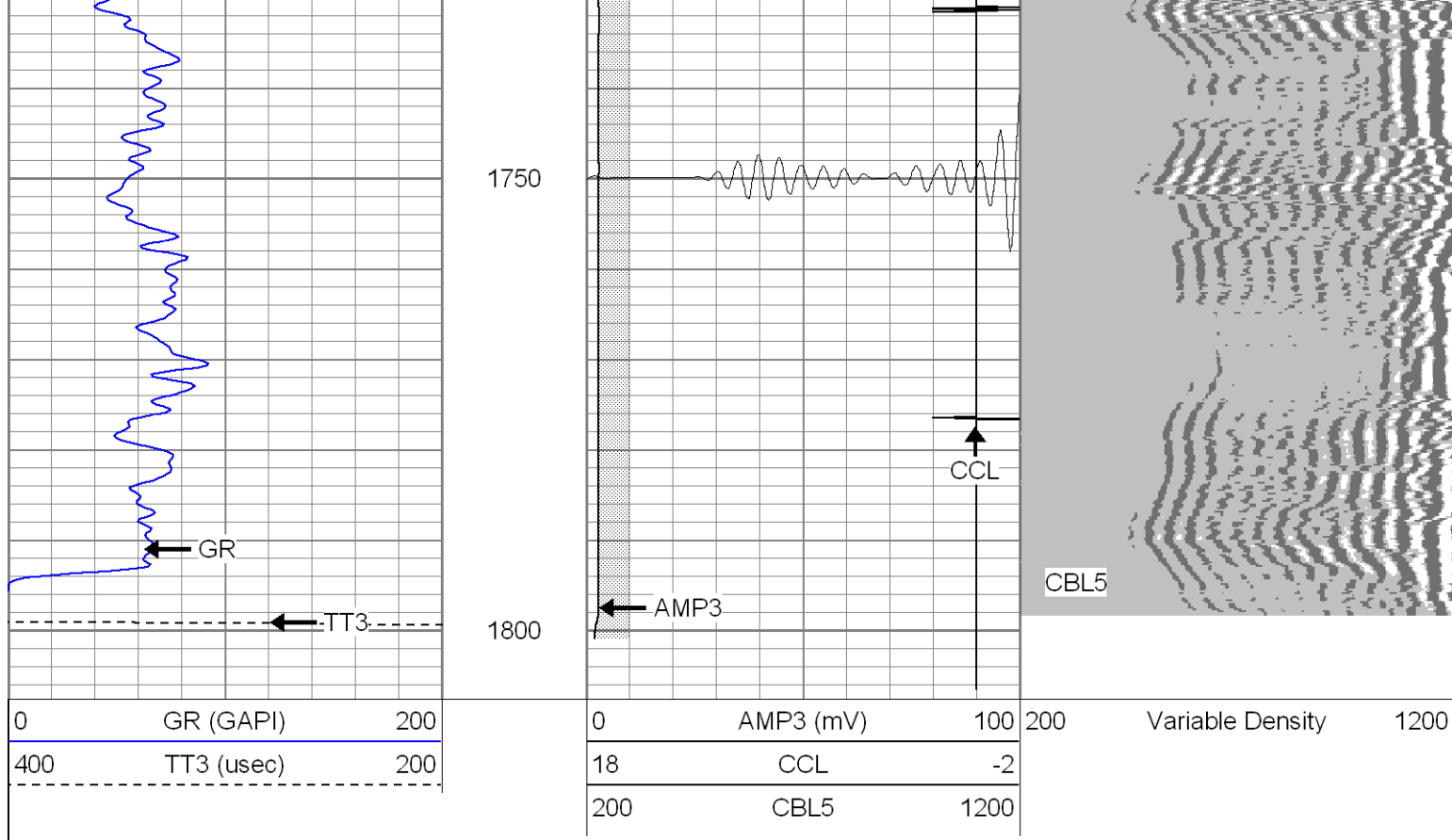
1550

1600

1650

1700



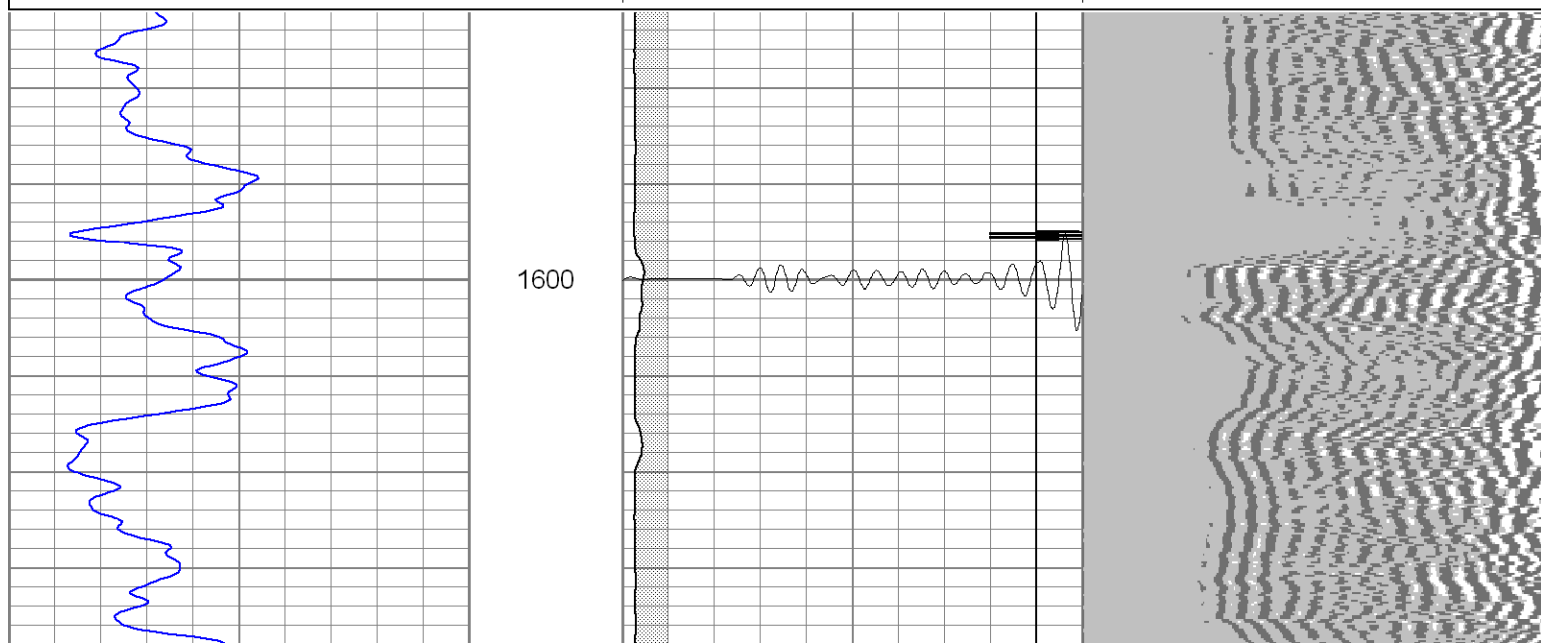
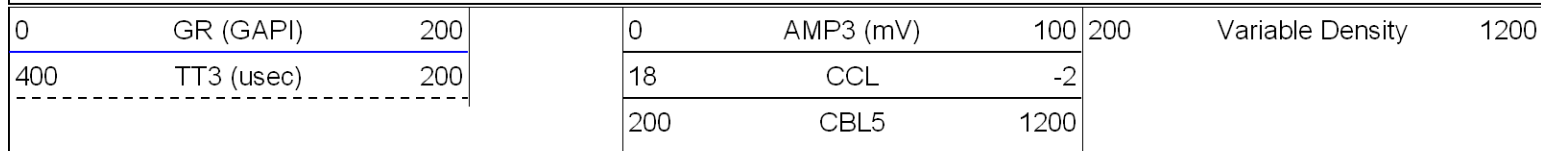


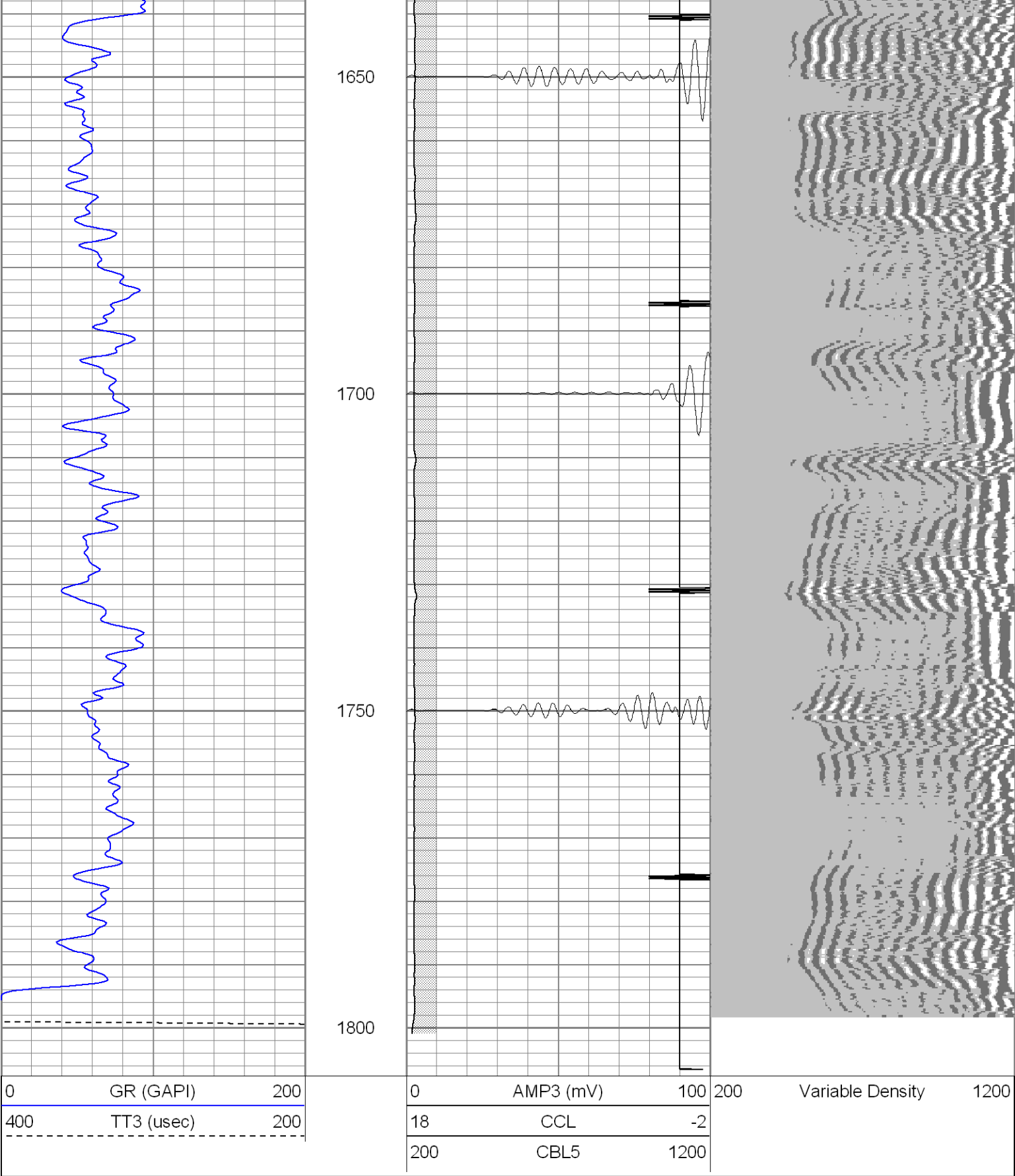
SUPERIOR

Black Lick, Pa.
Mercer, Pa.
Wooster, Oh.
Cleveland, Ok.
Trinidad, Co.

Repeat Pass

Database File: c:\warrior\data\xt\xtoge330471108b.db
Dataset Pathname: pass1.1
Presentation Format: cblrt
Dataset Creation: Fri Jul 11 09:10:14 2008 by Calc Open-Cased 071220
Charted by: Depth in Feet scaled 1:240





Cement Bond Log Calibration Report

Serial Number: Titan6
Tool Model: T5
Performed: Fri Jul 11 07:20:13 2008

Depth: 0 ft
Casing Diameter: 0 in

	3' Spacing	5' Spacing	
Signal Zero:	0	0	mV
Calibrated Amplitude:	85	85	mV
Reading at Signal Zero:	-0.05	-0.05	V
Reading in Free Pipe:	2.01	2	V
Gain:	41.2621	41.4634	
Offset:	2.06311	2.07317	

Gamma Ray Calibration Report			
Serial Number:	Titan6		
Tool Model:	T5		
Performed:	Fri Jul 11 07:20:59 2008		
Calibrator Value:	1.0	GAPI	
Background Reading:	0.0	cps	
Calibrator Reading:	1.0	cps	
Sensitivity:	1.0000	GAPI/cps	

Sensor	Offset (ft)	Schematic	Description	Len (ft)	OD (in)	Wt (lb)
CHD	15.66		None	0.75	1.50	5.00
GR	13.64		GR-T5 (Titan6) GR Titan6	2.52	2.44	25.00
WVF5	9.49		CBL-T5 (Titan6) Titan 6 CBL	7.23	2.25	110.00
WVF3	8.49					
CENT	5.15		X	3.00	1.69	25.00
CCL	0.83		CCL-T6 (titan6) long	2.15	2.75	15.00

Dataset:	/field/well/run1/_plots/_jobs_/cbl
Total Length:	15.66 ft
Total Weight:	180.00 lb
O.D.	2.75 in