



**SUPERIOR**  
WELL SERVICES  
Black Lick, Pa.  
Mercer, Pa.  
Wooster, Oh.  
Cleveland, Ok.  
Trinidad, Co.

**CEMENT BOND  
GAMMA RAY  
LOG  
1000 PSI**

Company XTO Energy Inc.  
Well Golden Eagle 33-04  
Field Purgatoire River  
County Las Animas State Colorado

Location: API # : 05 071 09507 00  
1319' FNL & 465 FWL  
SEC 33 TWP 33S RGE 67W  
Permanent Datum Ground Level Elevation 7491'  
Log Measured From Ground Level  
Drilling Measured From Ground Level  
Other Services  
Elevation  
K.B. ---  
D.F. ---  
G.L. 7491'

Date 7-9-08

Run Number	One		
Depth Driller	2150'		
Depth Logger	2088'		
Bottom Logged Interval	2084'		
Top Log Interval	Surface		
Open Hole Size	7 7/8"		
Type Fluid	Water		
Density / Viscosity	///		
Max. Recorded Temp.	134 Deg F		
Estimated Cement Top	Surface with windows		
Time Well Ready	R.O.A.		
Time Logger on Bottom	7:30 AM		
Equipment Number	T0700		
Location	Trinidad		
Recorded By	K. Lucero		
Witnessed By	Mr. Ryan Rensink		

Borehole Record				Tubing Record			
Run Number	Bit	From	To	Size	Weight	From	To
Casing Record	Size			Wgt/Ft		Top	Bottom
Surface String	8 5/8					00'	493'
Prot. String							
Production String	5 1/2					00'	2088'
Liner							

<<< Fold Here >>>

All interpretations are opinions based on inferences from electrical or other measurements and we cannot and do not guarantee the accuracy or correctness of any interpretation, and we shall not, except in the case of gross or willful negligence on our part, be liable or responsible for any loss, costs, damages, or expenses incurred or sustained by anyone resulting from any interpretation made by any of our officers, agents or employees. These interpretations are also subject to our general terms and conditions set out in our current Price Schedule.

Comments

Well Directions:  
Hwy 12 Past Weston, turn left across from substation, go thru gate, immediate right first left, take right on GE 33-03, dead end on location



**SUPERIOR**  
Black Lick, Pa.  
Mercer, Pa.  
Wooster, Oh.  
Cleveland, Ok.  
Trinidad, Co.

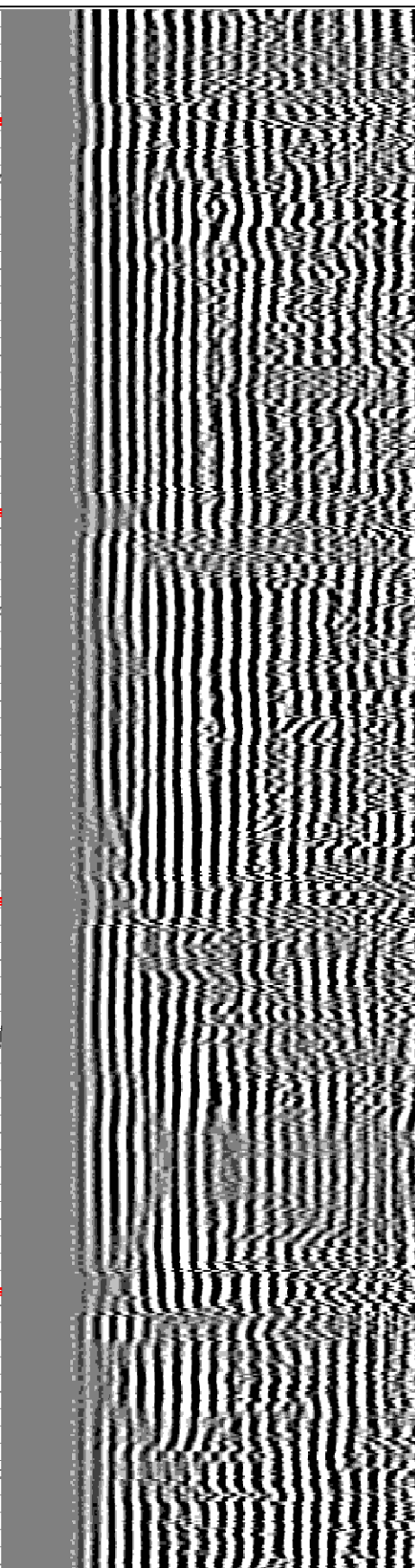
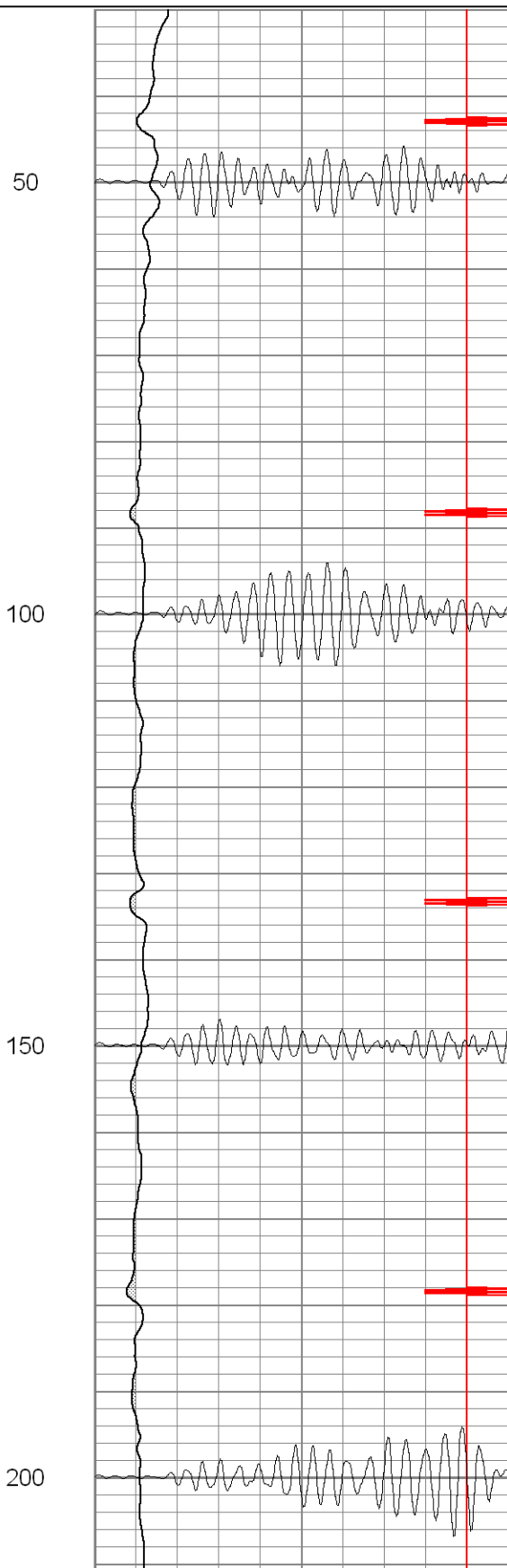
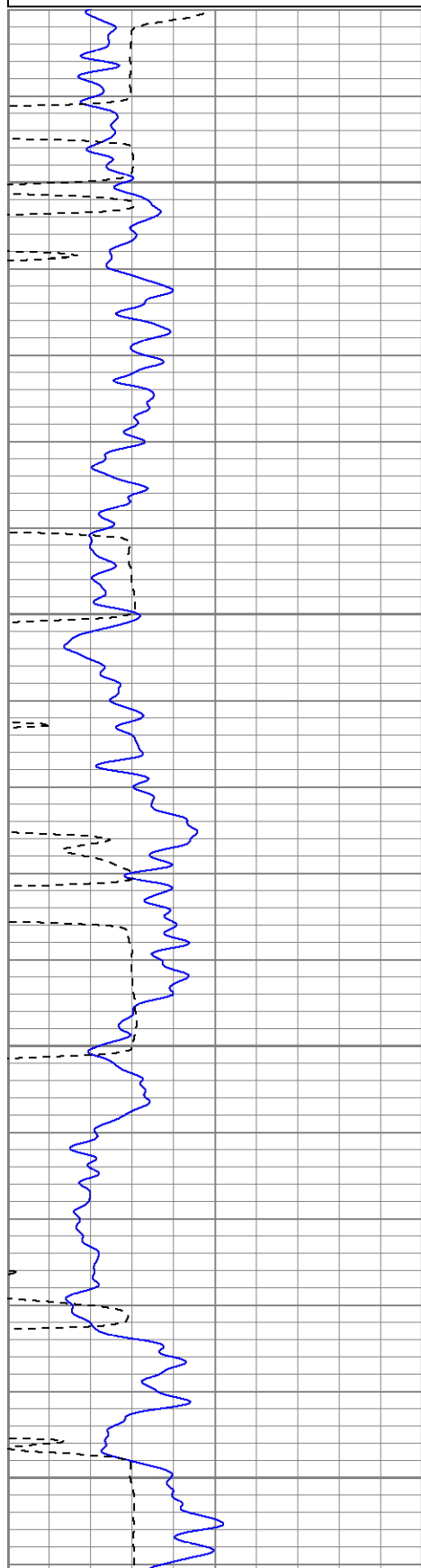
**Main Pass**

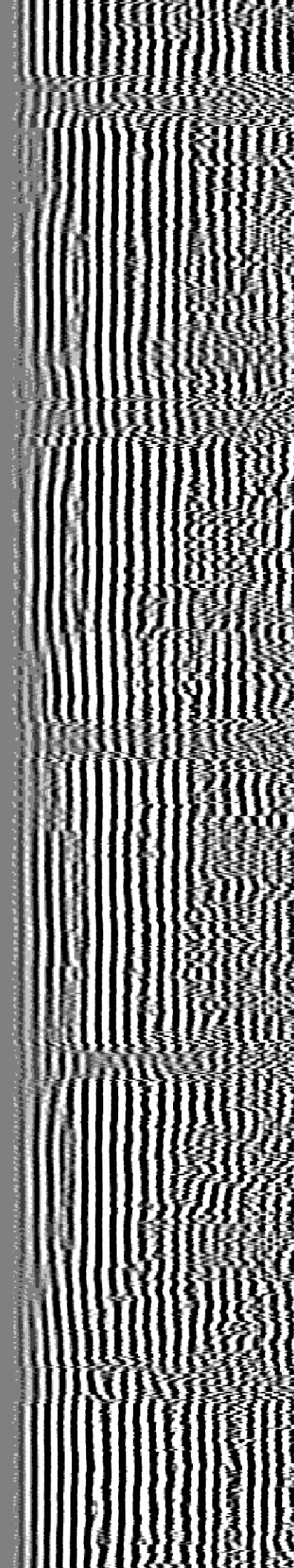
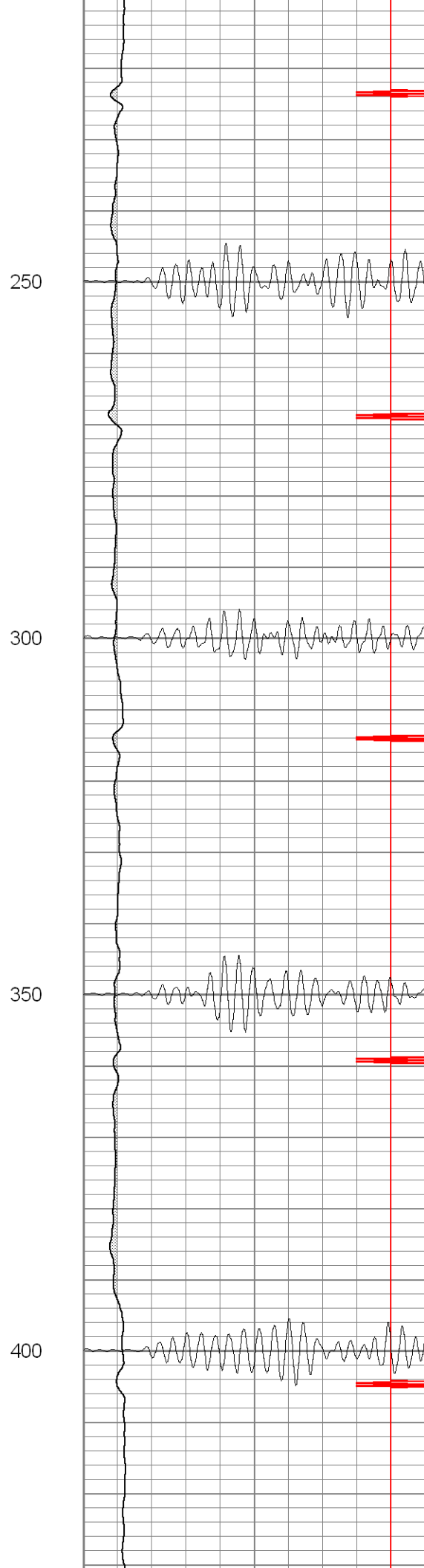
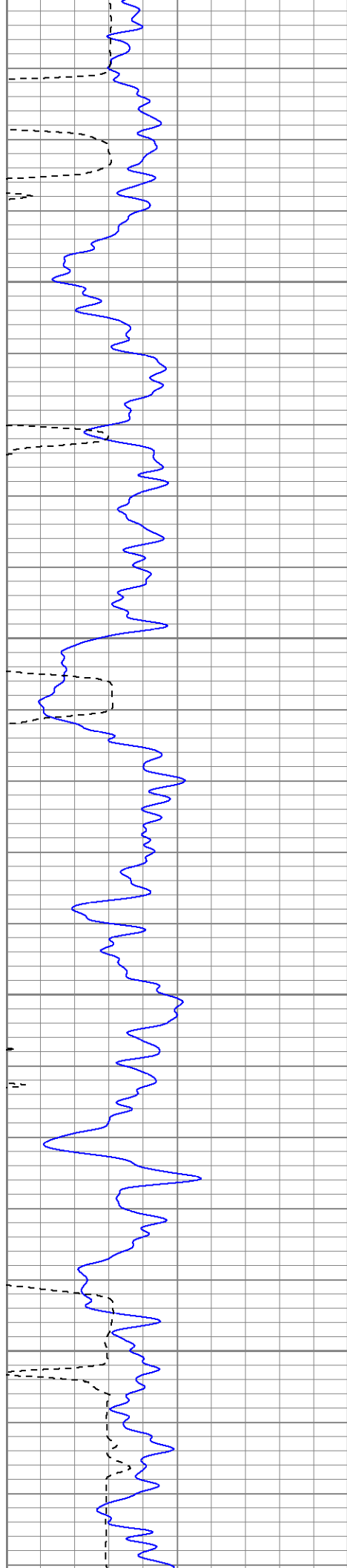
Database File: xtoge33-047908b.db  
Dataset Pathname: pass2.1  
Presentation Format: cblrt  
Dataset Creation: Wed Jul 09 08:46:31 2008 by Calc Open-Cased 071220  
Charted by: Depth in Feet scaled 1:240

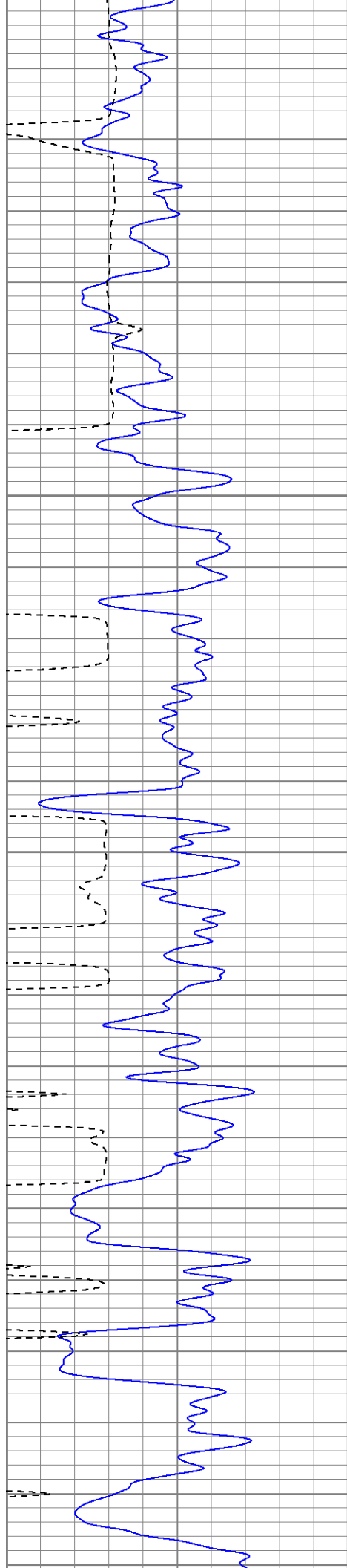
0	GR (GAPI)	200
400	TT3 (usec)	200
<hr/>		
200	GR (GAPI)	400

0	Amplitude (mV)	100
18	CCL	-2
<hr/>		
200	CBL5	1200

200 VDL 1200







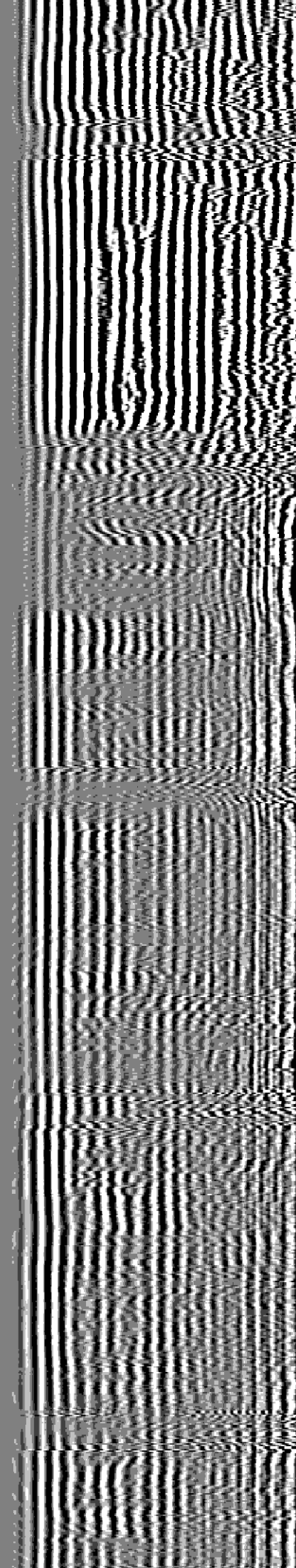
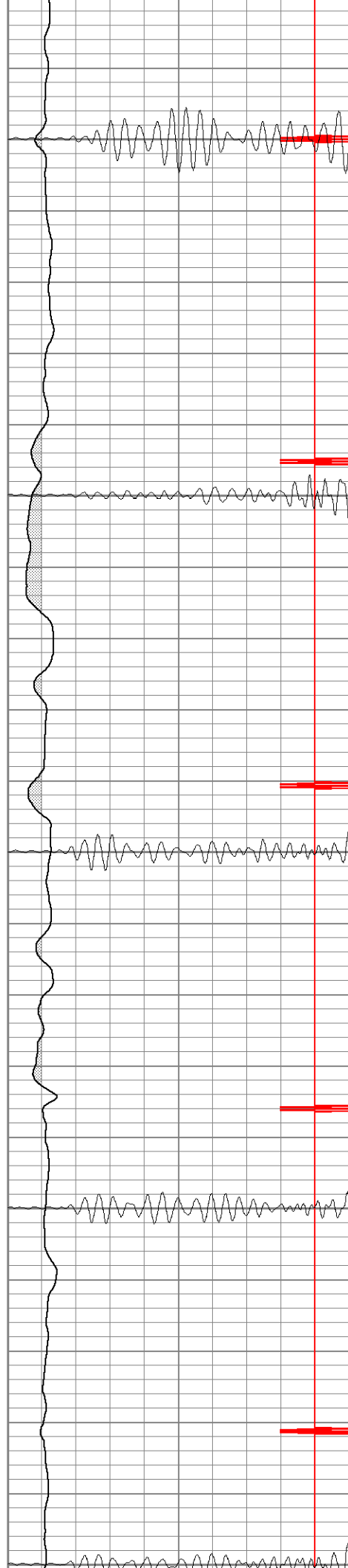
450

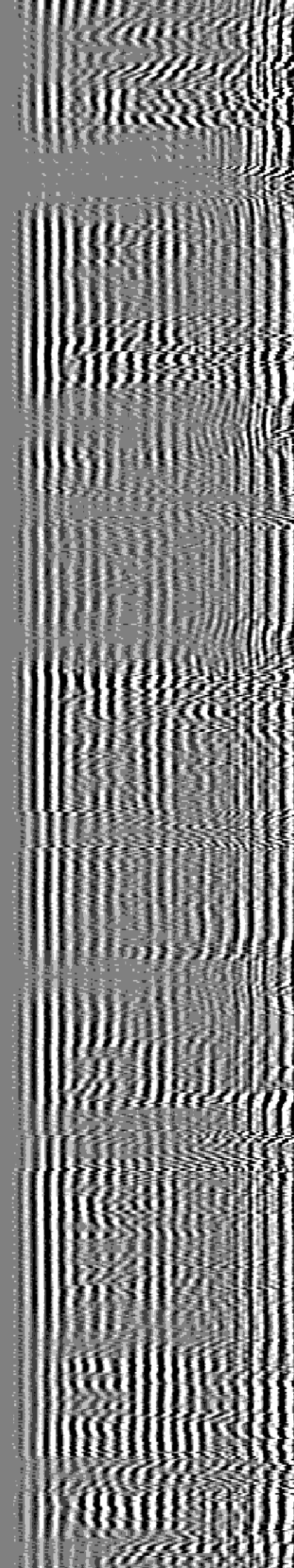
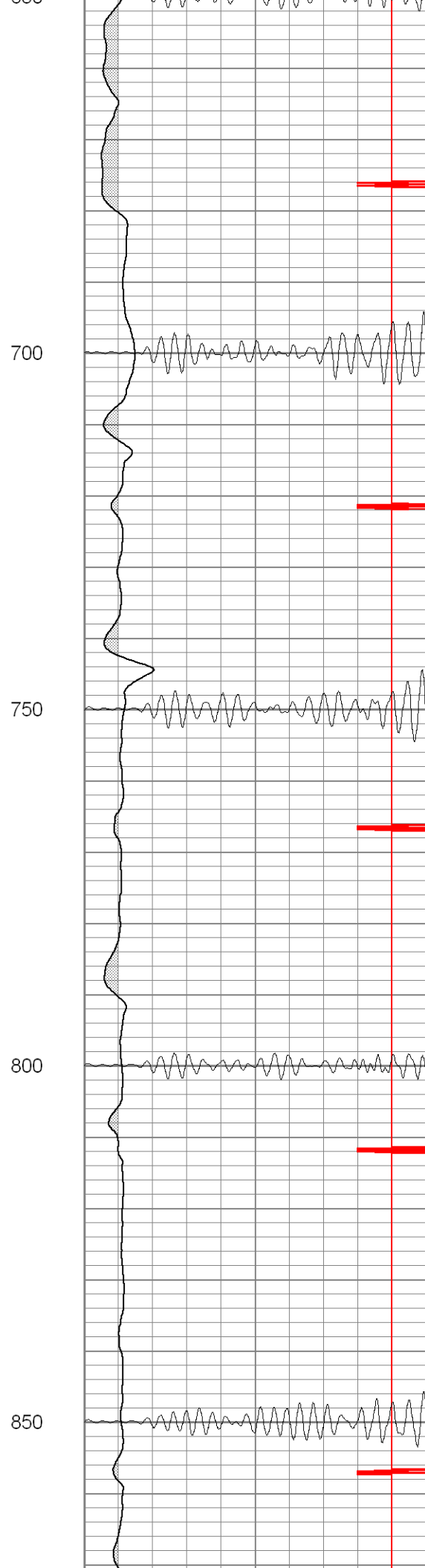
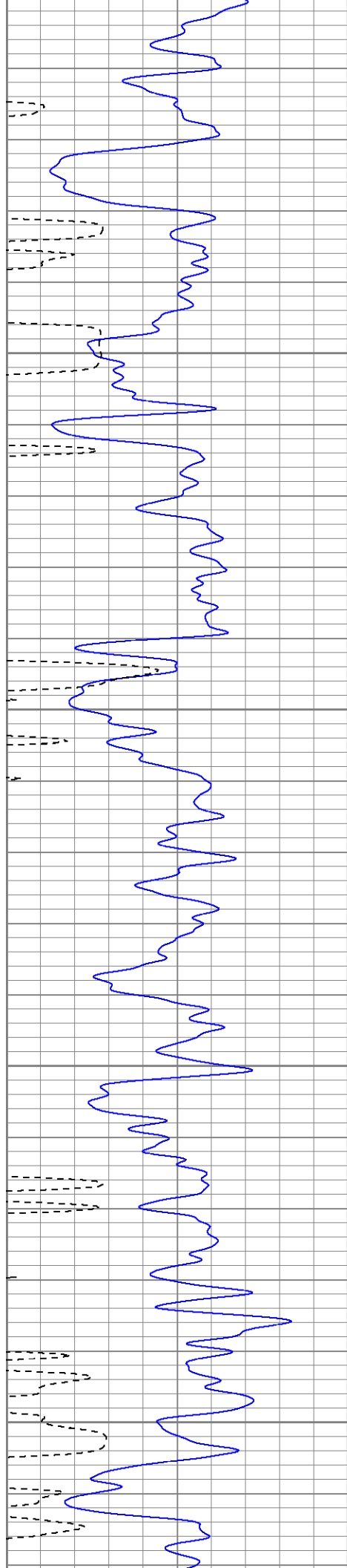
500

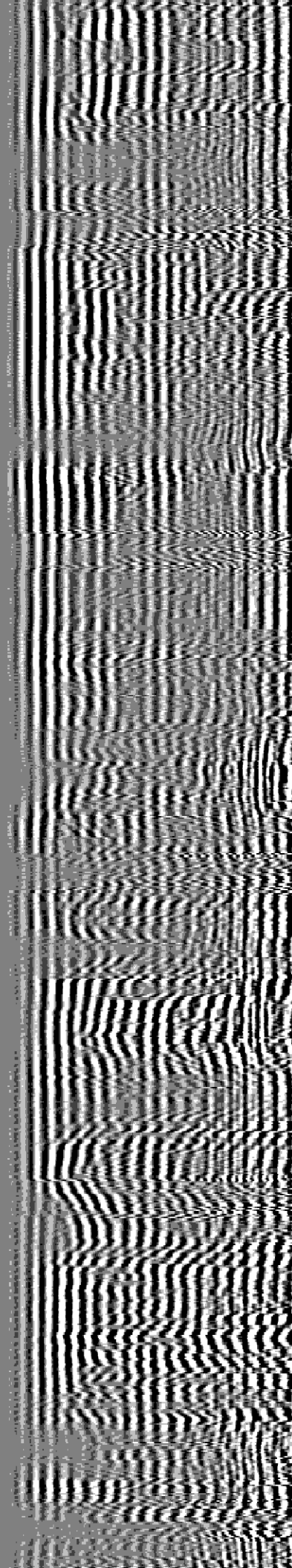
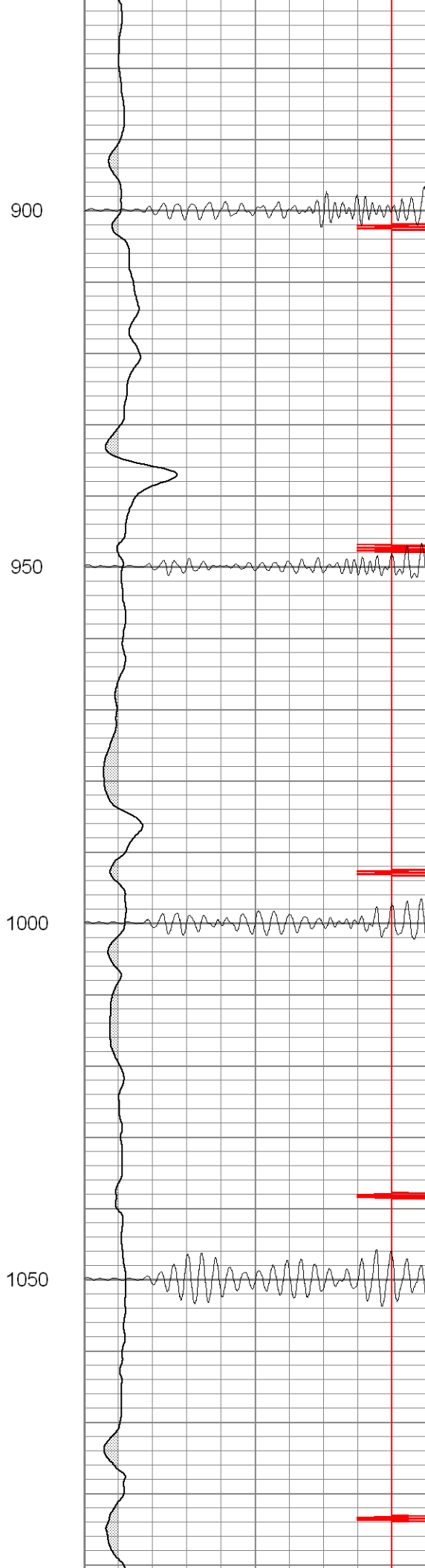
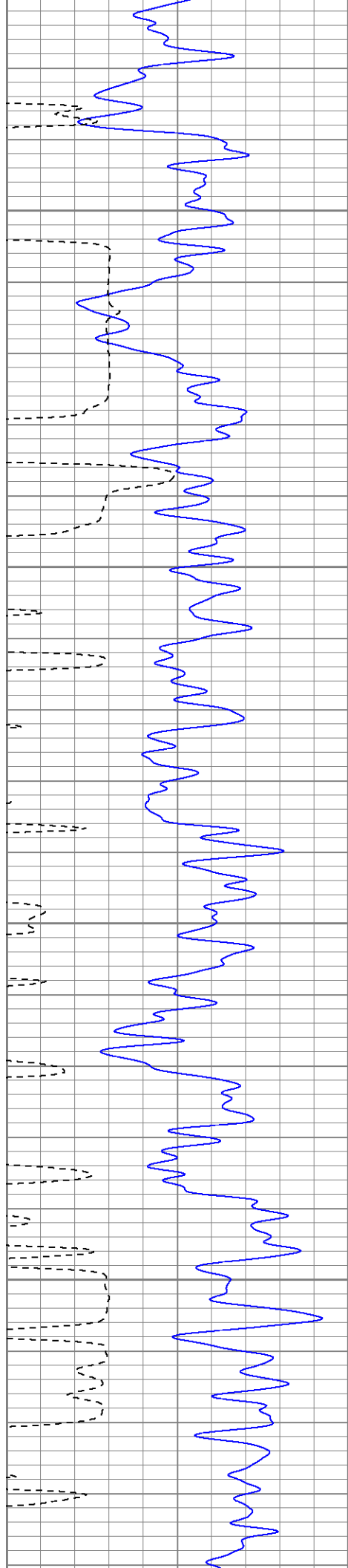
550

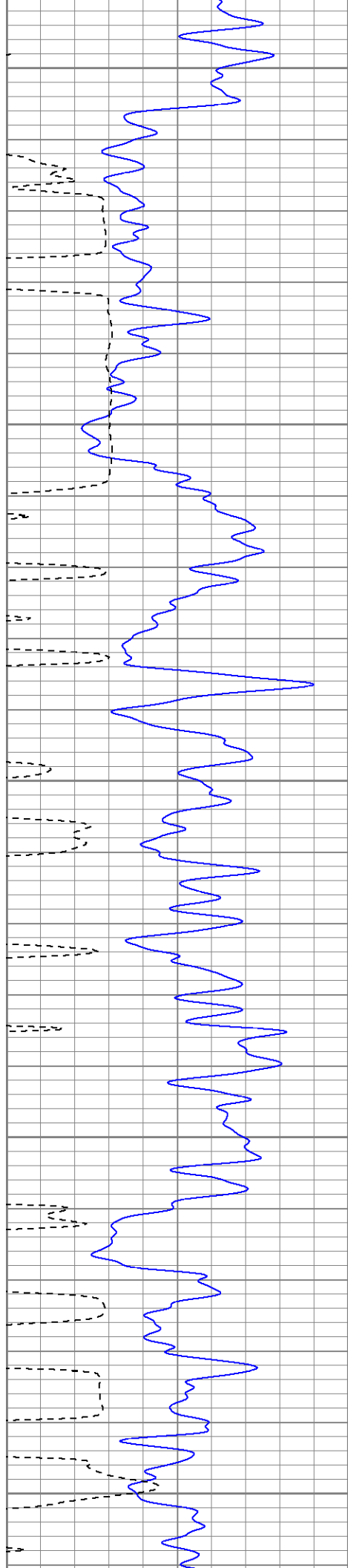
600

650









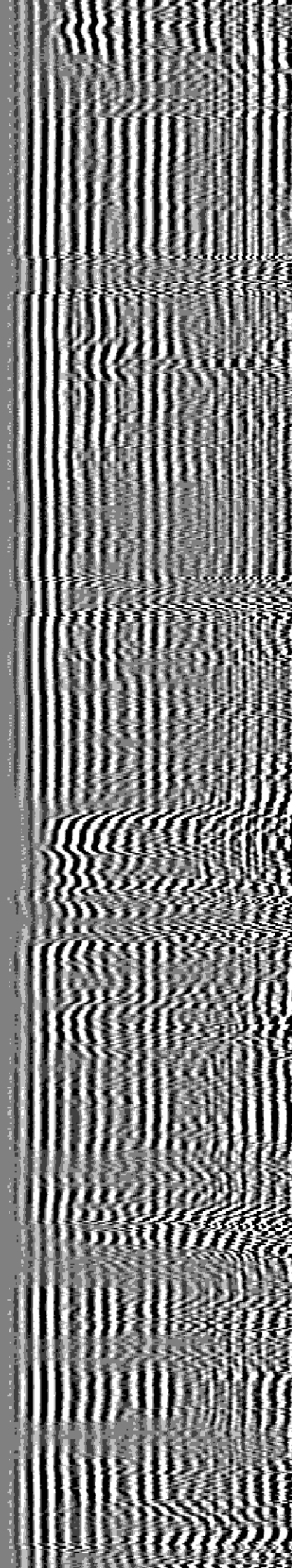
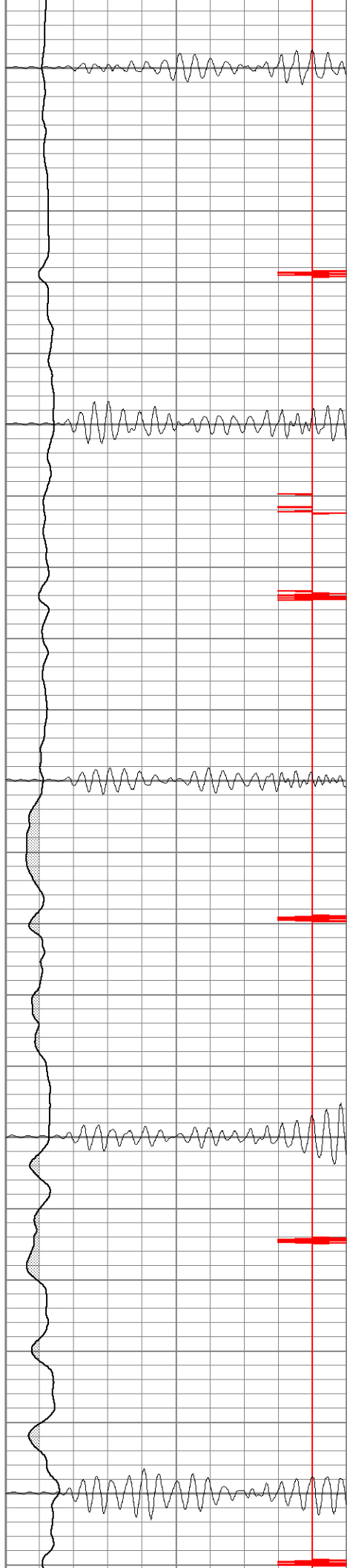
1100

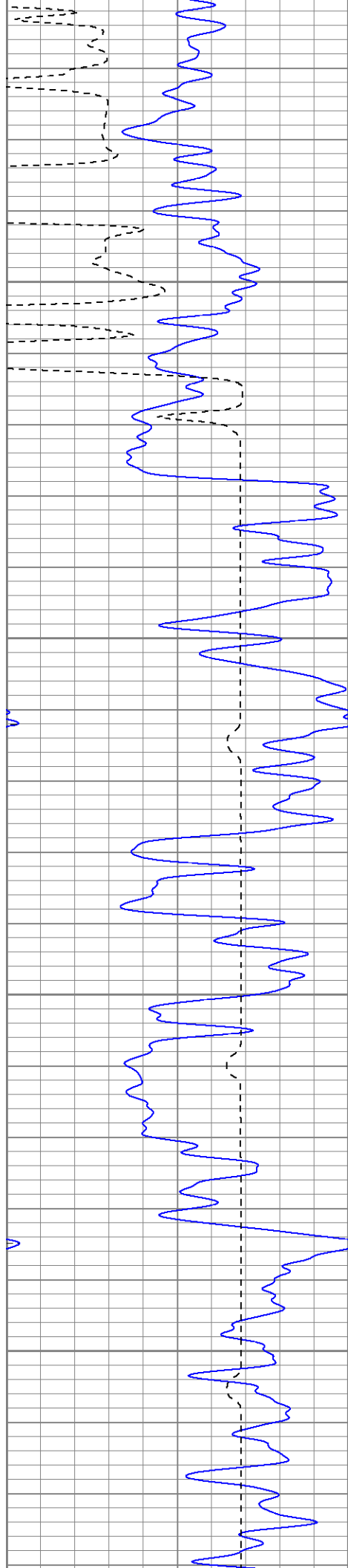
1150

1200

1250

1300



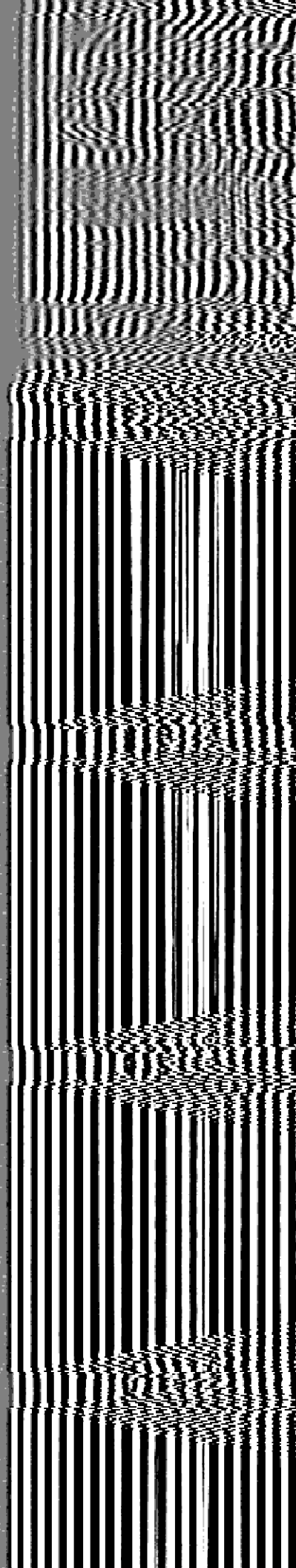
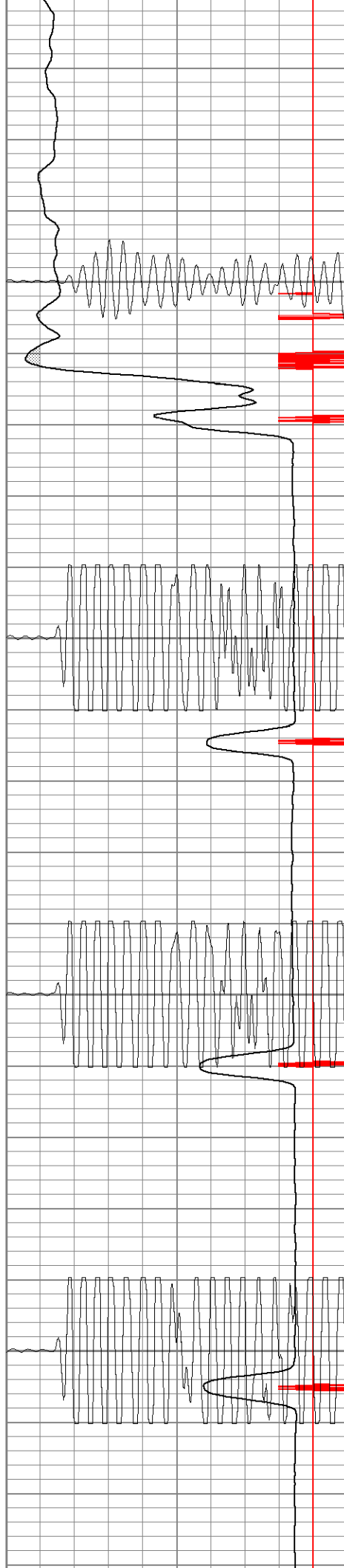


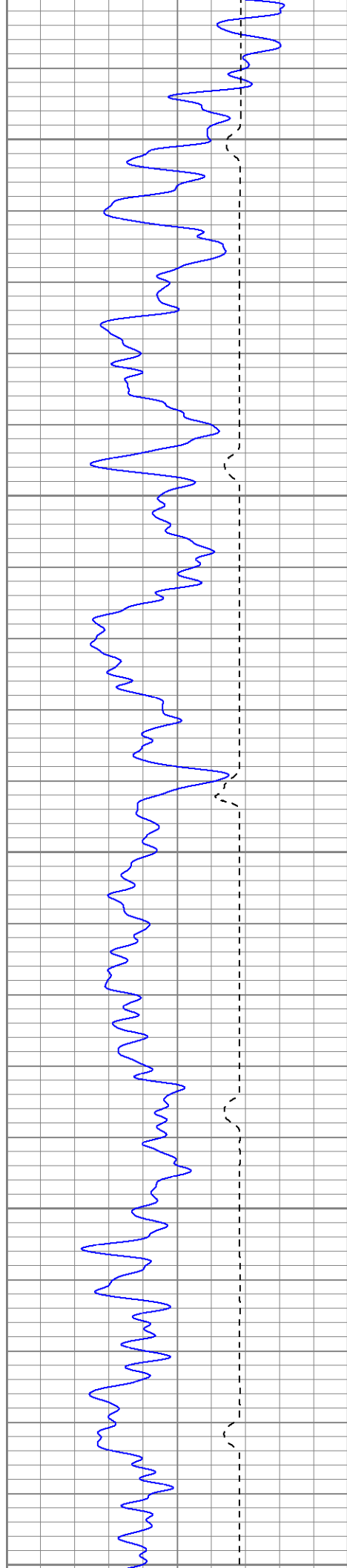
1350

1400

1450

1500





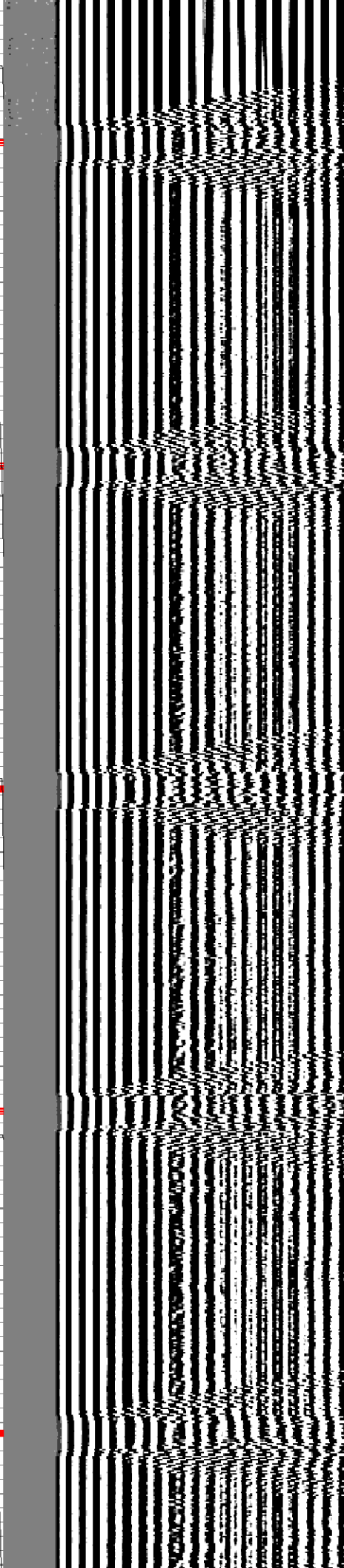
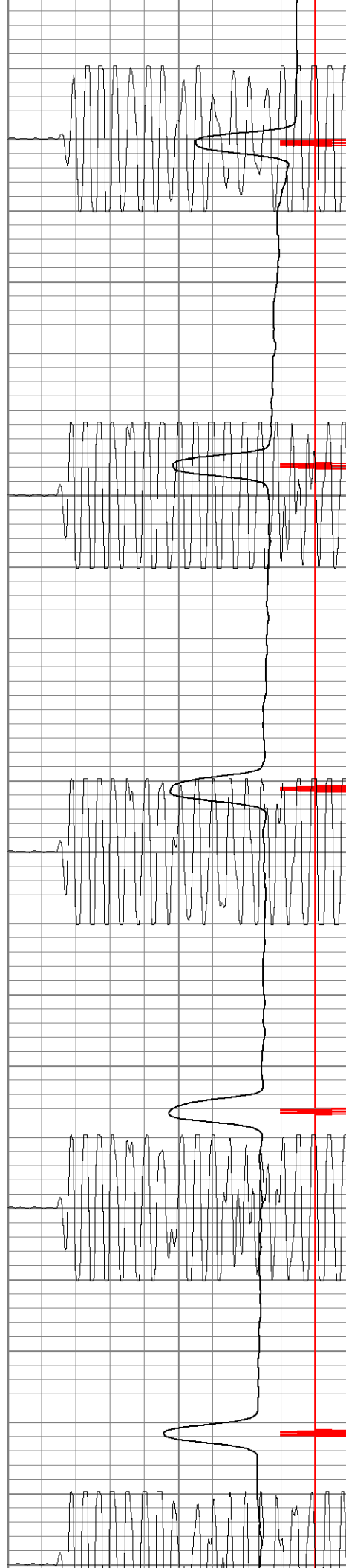
1550

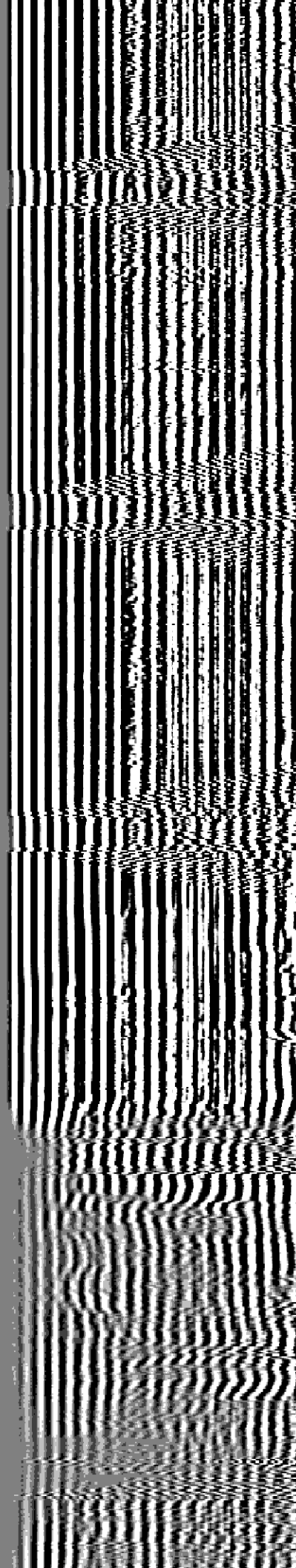
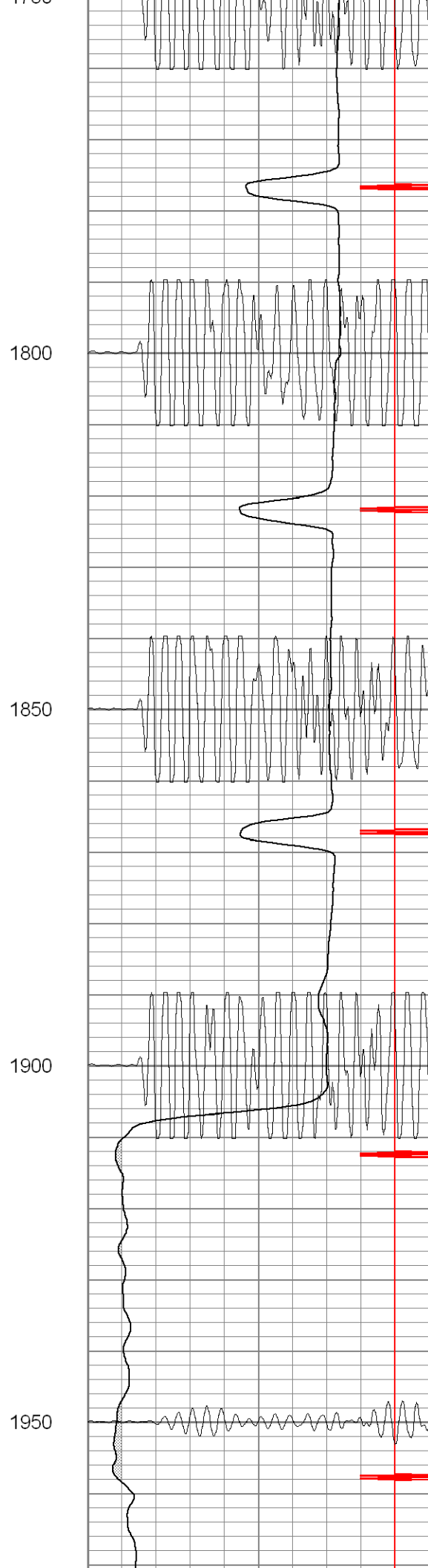
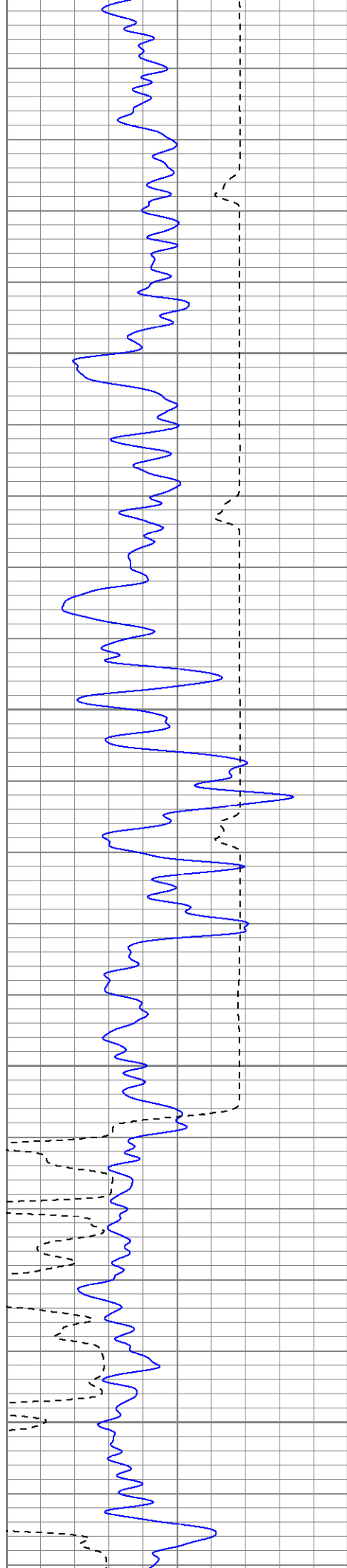
1600

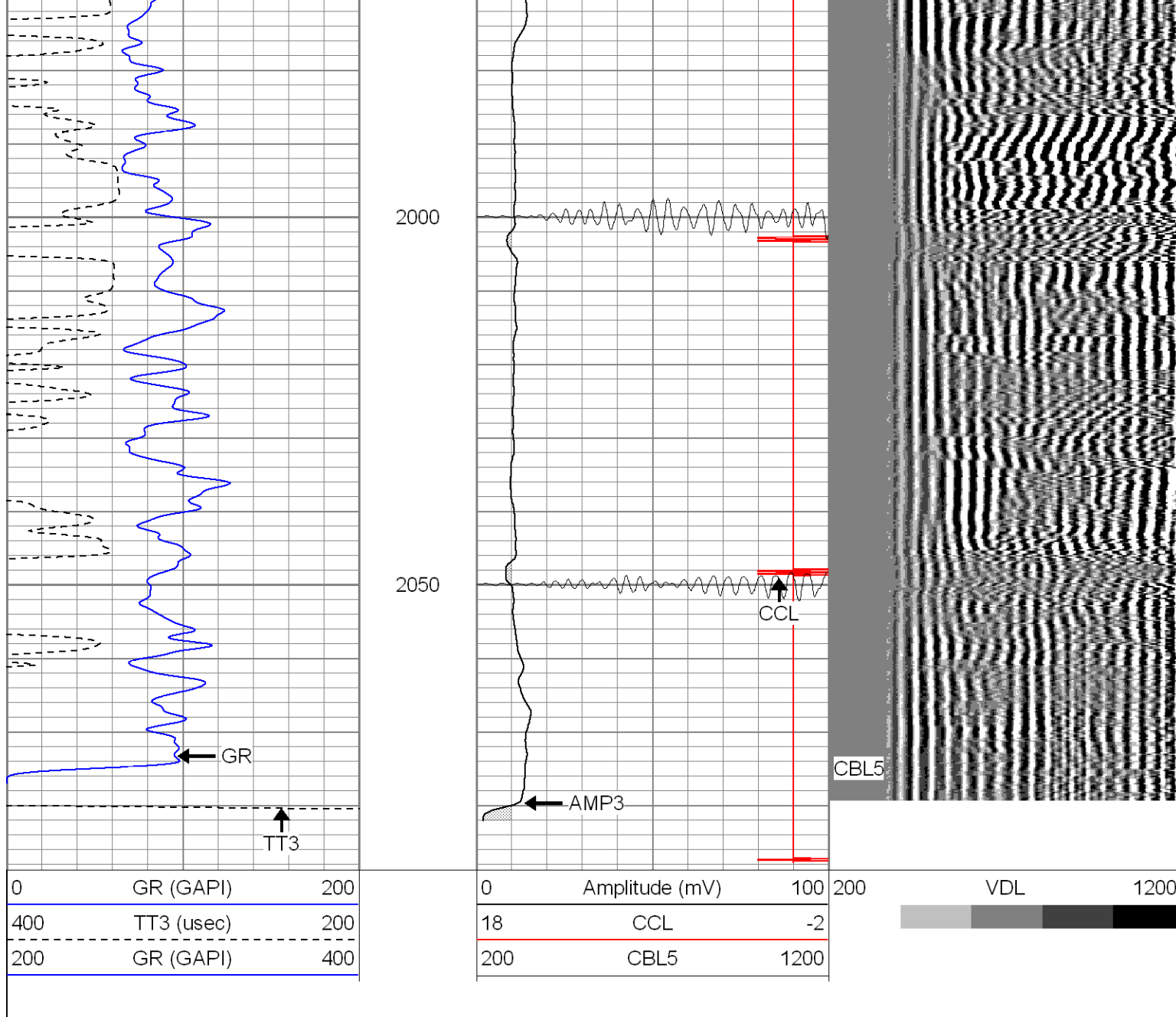
1650

1700

1750







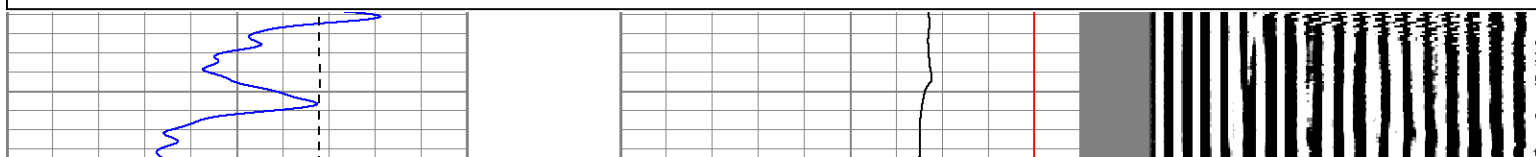
## SUPERIOR

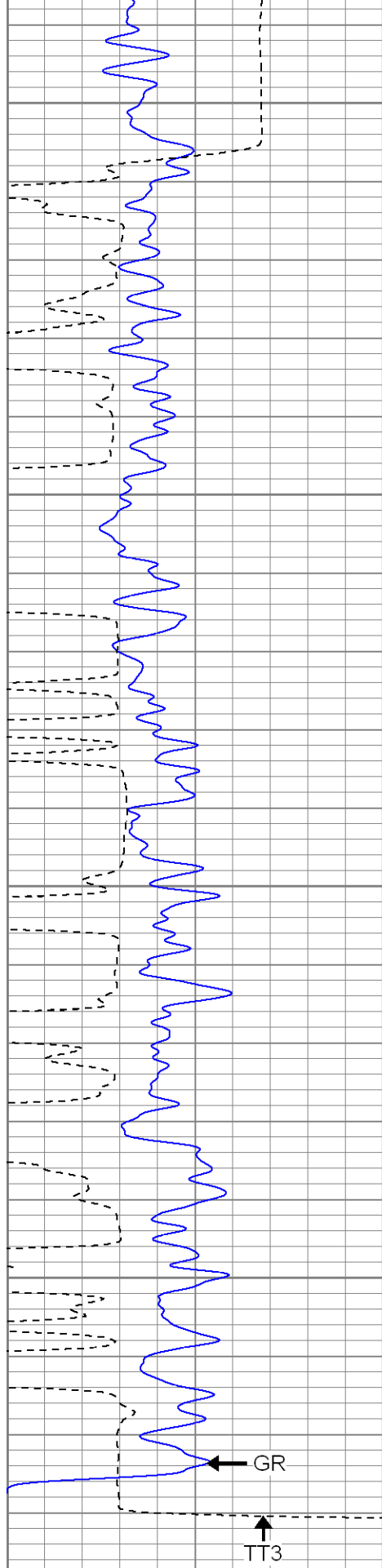
Black Lick, Pa.  
Mercer, Pa.  
Wooster, Oh.  
Cleveland, Ok.  
Trinidad, Co.

# Repeat Section

Database File: xtoge33-047908b.db  
Dataset Pathname: pass1  
Presentation Format: cblrt  
Dataset Creation: Wed Jul 09 07:41:45 2008 by Log Open-Cased 071220  
Charted by: Depth in Feet scaled 1:240

0	GR (GAPI)	200	0	Amplitude (mV)	100	200	VDL	1200
400	TT3 (usec)	200	18	CCL	-2			
200	GR (GAPI)	400	200	CBL5	1200			





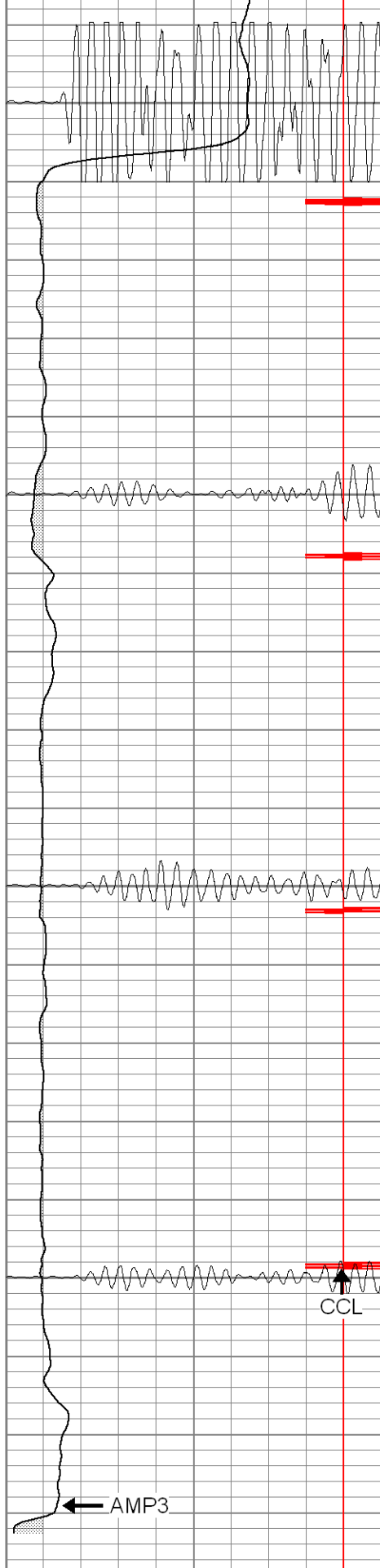
0	GR (GAPI)	200
400	TT3 (usec)	200
200	GR (GAPI)	400

1900

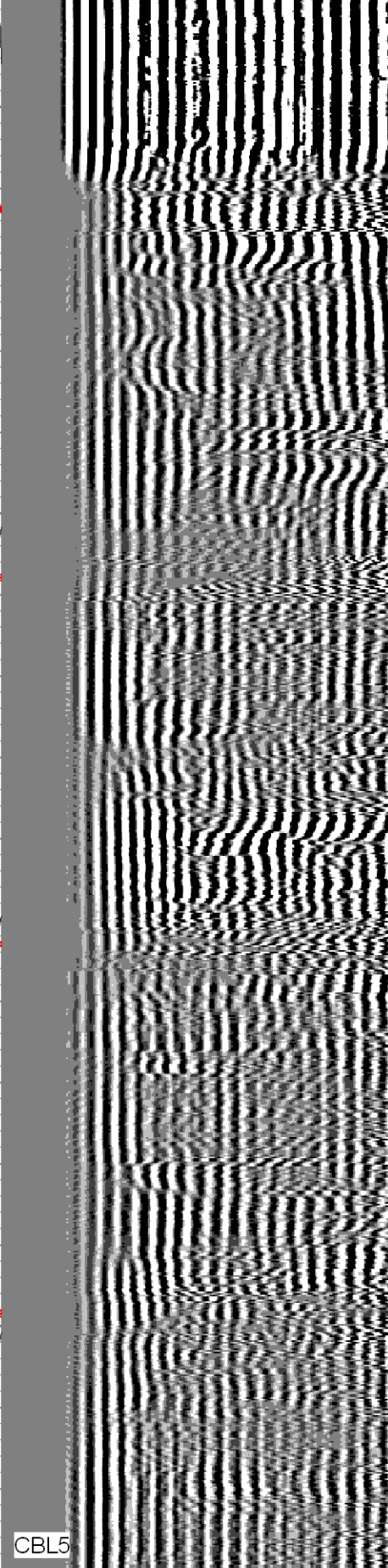
1950

2000

2050



0	Amplitude (mV)	100
18	CCL	-2
200	CBL5	1200



200	VDL	1200
-----	-----	------

# Calibration Report

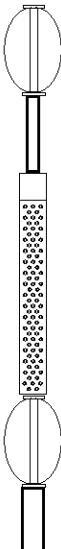
Database File: xtoge33-047908b.db  
 Dataset Pathname: pass1  
 Dataset Creation: Wed Jul 09 07:41:45 2008 by Log Open-Cased 071220

## Cement Bond Log Calibration Report

Serial Number:	Titan5		
Tool Model:	T5		
Performed:	Thu Jul 03 10:23:25 2008		
Depth:	2424.98	ft	
Casing Diameter:	5.5	in	
	3' Spacing	5' Spacing	
Signal Zero:	1	1	mV
Calibrated Amplitude:	85	85	mV
Reading at Signal Zero:	-0.02	0	V
Reading in Free Pipe:	1.49	2.4	V
Gain:	55.6291	35	
Offset:	2.11258	1	

## Gamma Ray Calibration Report

Serial Number:	Titan5	
Tool Model:	T2	
Performed:	Wed Jul 02 08:27:42 2008	
Calibrator Value:	200.0	GAPI
Background Reading:	54.0	cps
Calibrator Reading:	219.0	cps
Sensitivity:	0.9900	GAPI/cps

Sensor	Offset (ft)	Schematic	Description	Len (ft)	OD (in)	Wt (lb)
GR	13.64		X	3.00	1.69	25.00
			GR-T2 (Titan5)	2.52	1.69	25.00
WVF5	9.49		CBL-T5 (Titan5)	7.23	2.44	110.00
WVF3	8.49					
CCL	0.83		X	3.00	1.69	25.00
			CCL-T6 (Titan6)	2.15	2.75	15.00

Dataset: xtoge33-047908b.db: field/well/run1/pass1  
 Total Length: 17.91 ft  
 Total Weight: 200.00 lb  
 O.D.: 2.75 in