



SUPERIOR
WELL SERVICES
Black Lick, Pa.
Mercer, Pa.
Wooster, Oh.
Cleveland, Ok.
Trinidad, Co.

**CEMENT BOND
GAMMA RAY
LOG
1000 PSI**

Company XTO Energy Inc.
Well New Elk 25-06
Field Purgatoire River
County Las Animas State Colorado

Location: API # : 05 071 09536 00
1615' FNL & 2119' FWL
SEC 25 TWP 33S RGE 68W
Permanent Datum Ground Level Elevation 7743'
Log Measured From Ground Level
Drilling Measured From Ground Level
Other Services
Elevation
K.B. -----
D.F. -----
G.L. 7743'

Date 7-7-08

Run Number	One		
Depth Driller	2200'		
Depth Logger	2134'		
Bottom Logged Interval	2130'		
Top Log Interval	Surface		
Open Hole Size	7 7/8"		
Type Fluid	Water		
Density / Viscosity	///		
Max. Recorded Temp.	125 Deg F		
Estimated Cement Top	surface		
Time Well Ready	R.O.A.		
Time Logger on Bottom	3:30 PM		
Equipment Number	T0700		
Location	Trinidad		
Recorded By	K. Lucero		
Witnessed By	Mr. Ryan Rensink		

Borehole Record				Tubing Record			
Run Number	Bit	From	To	Size	Weight	From	To
Casing Record	Size			Wgt/Ft		Top	Bottom
Surface String	8 5/8					00'	912'
Prot. String							
Production String	5 1/2					00'	2180'
Liner							

<<< Fold Here >>>

All interpretations are opinions based on inferences from electrical or other measurements and we cannot and do not guarantee the accuracy or correctness of any interpretation, and we shall not, except in the case of gross or willful negligence on our part, be liable or responsible for any loss, costs, damages, or expenses incurred or sustained by anyone resulting from any interpretation made by any of our officers, agents or employees. These interpretations are also subject to our general terms and conditions set out in our current Price Schedule.

Comments

Well Directions:

Second Bosque Entrance, stright across railroad tracks, right to Apache canyon, main road through 4 drive through locations, next right up hill, left at top of hill, dead end on location.



SUPERIOR
Black Lick, Pa.
Mercer, Pa.
Wooster, Oh.
Cleveland, Ok.
Trinidad, Co.

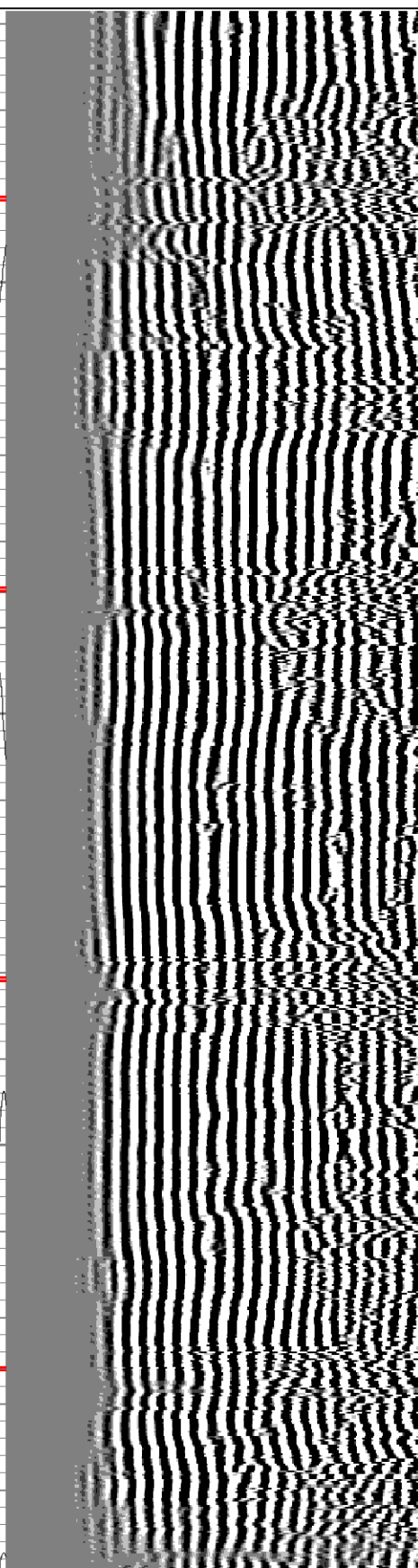
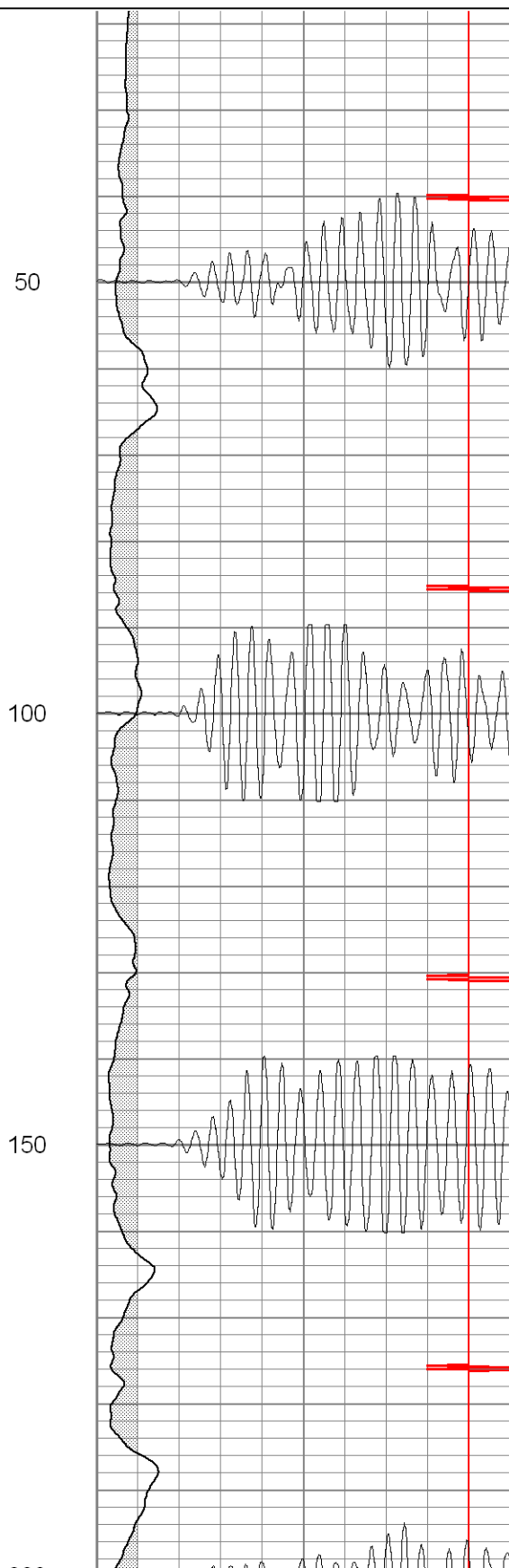
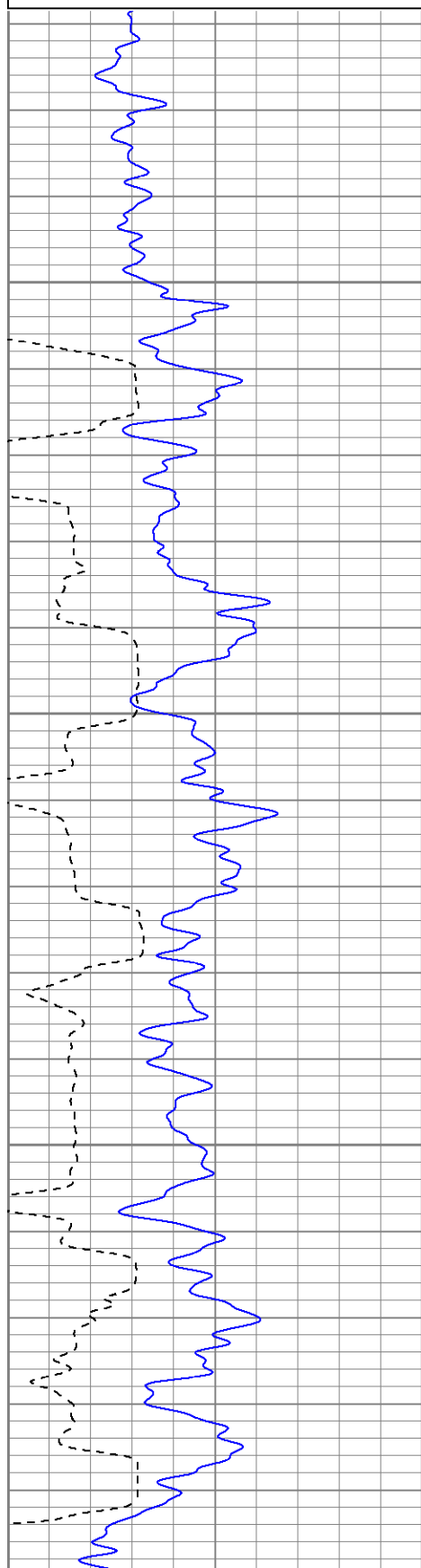
Main Pass 1000 PSI

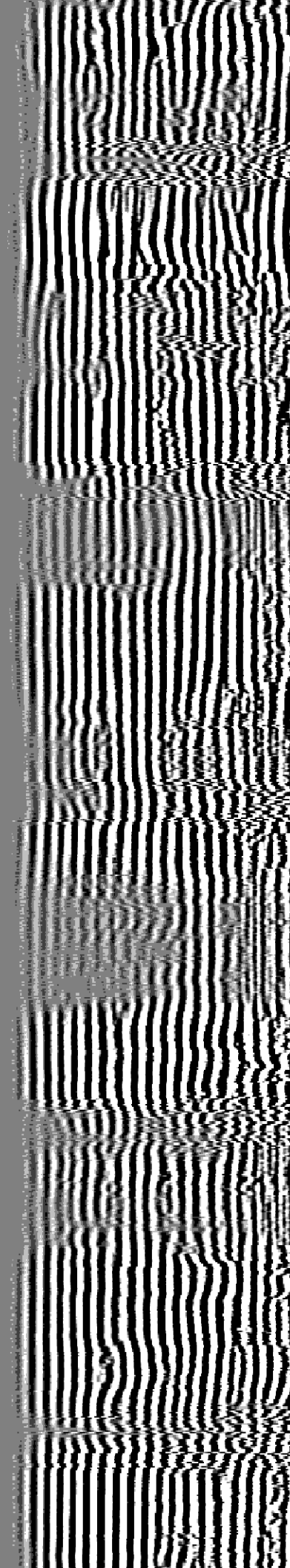
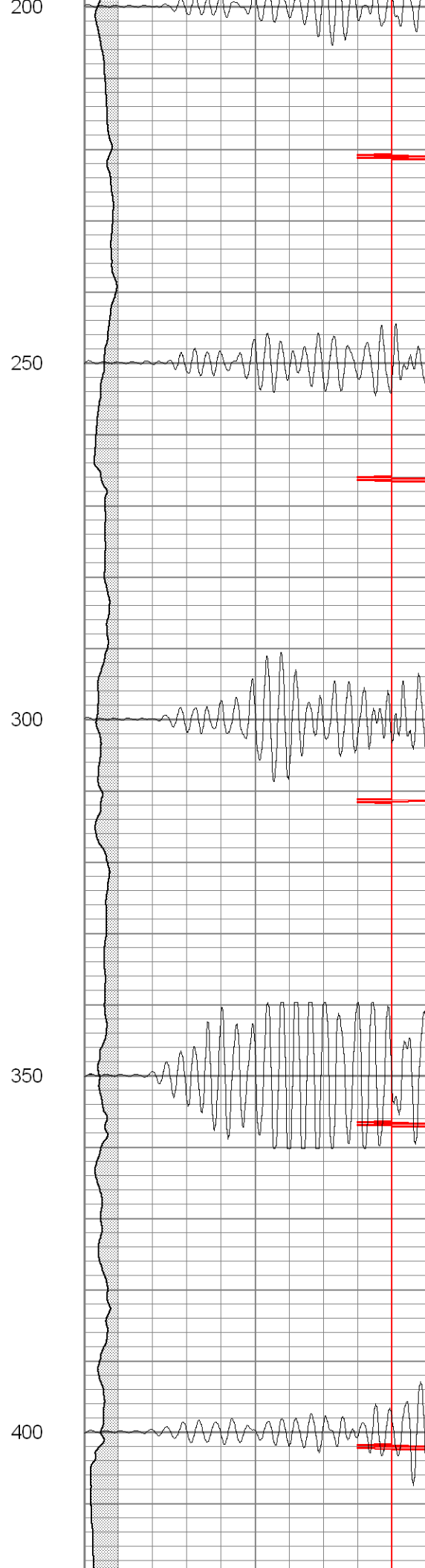
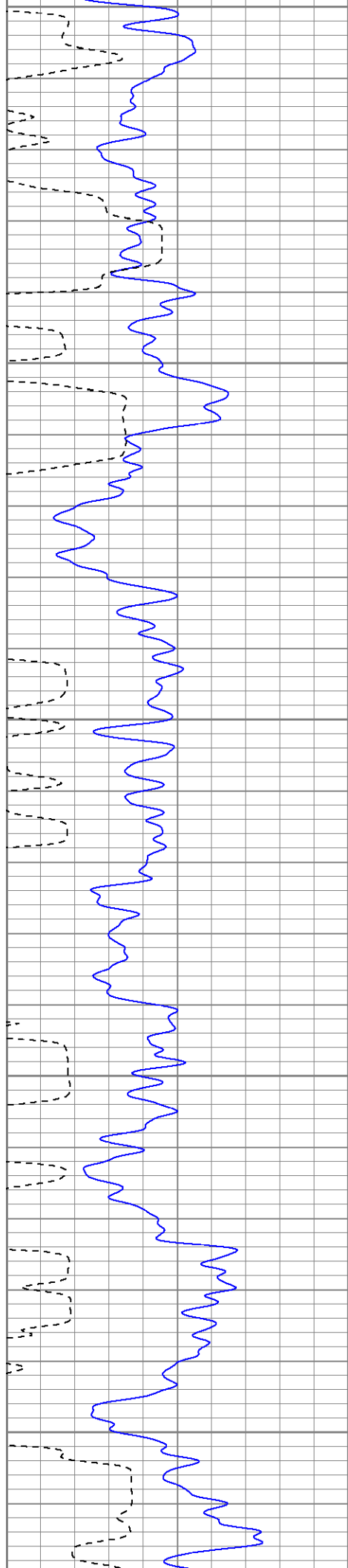
Database File: xtone25-067708b.db
Dataset Pathname: pass2
Presentation Format: cblrt
Dataset Creation: Mon Jul 07 15:26:36 2008 by Log Open-Cased 071220
Charted by: Depth in Feet scaled 1:240

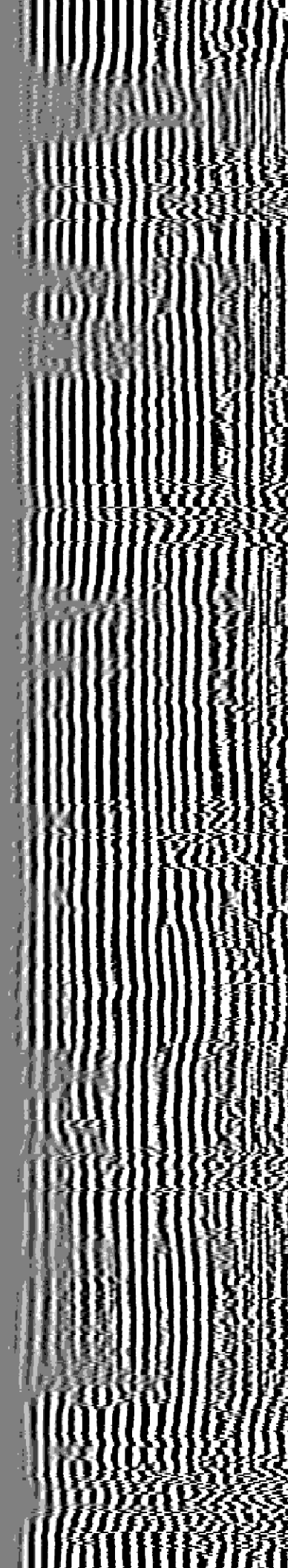
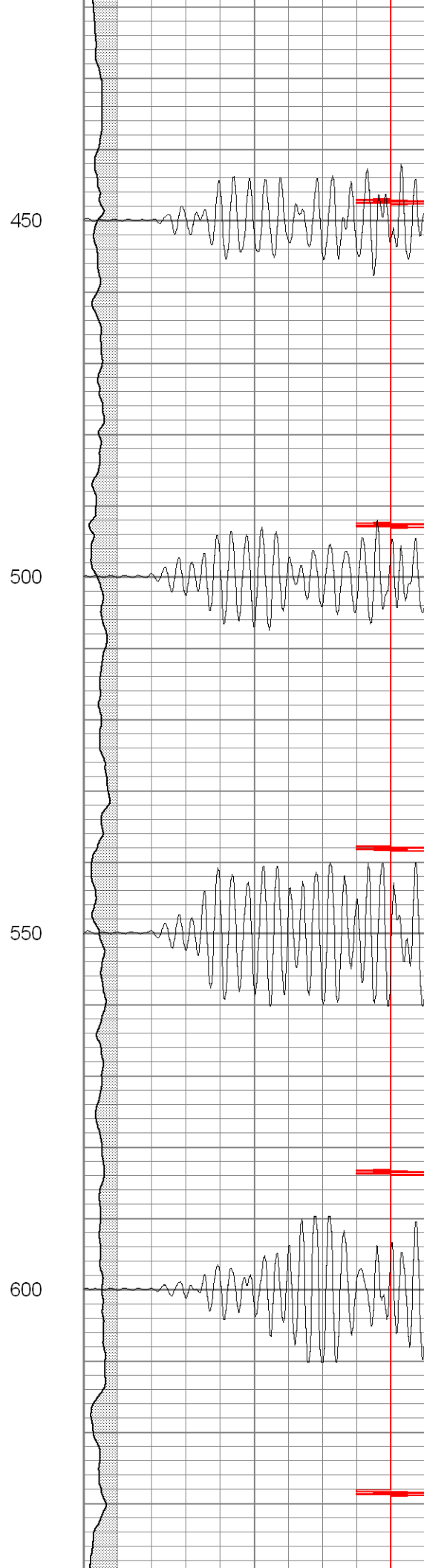
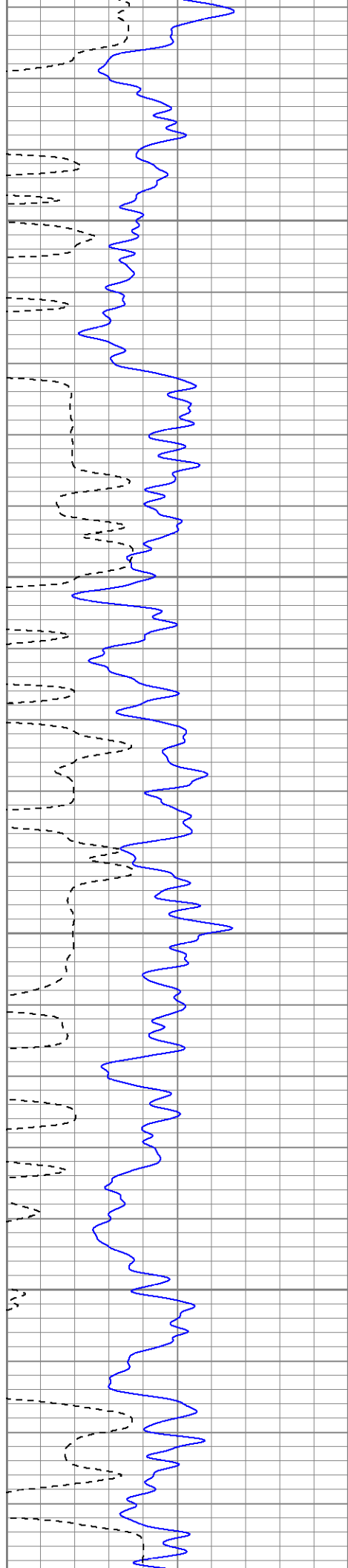
0	GR (GAPI)	200
400	TT3 (usec)	200
<hr/>		
200	GR (GAPI)	400

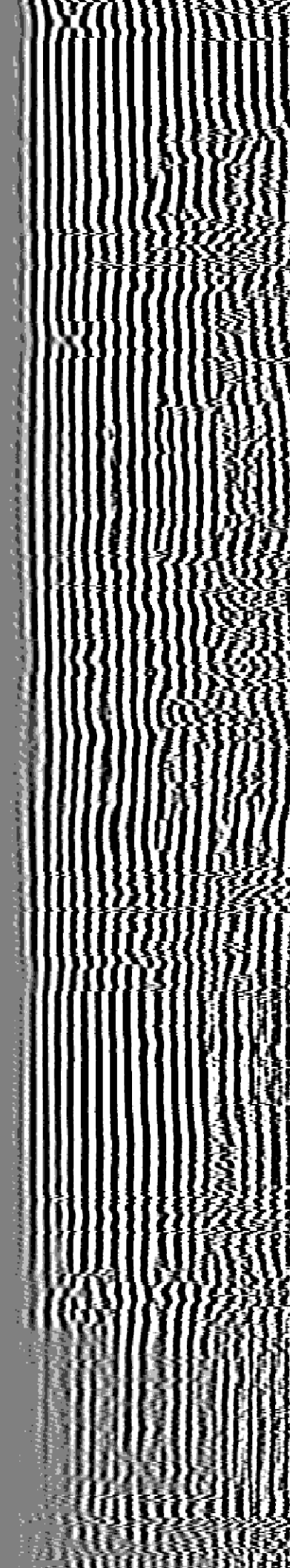
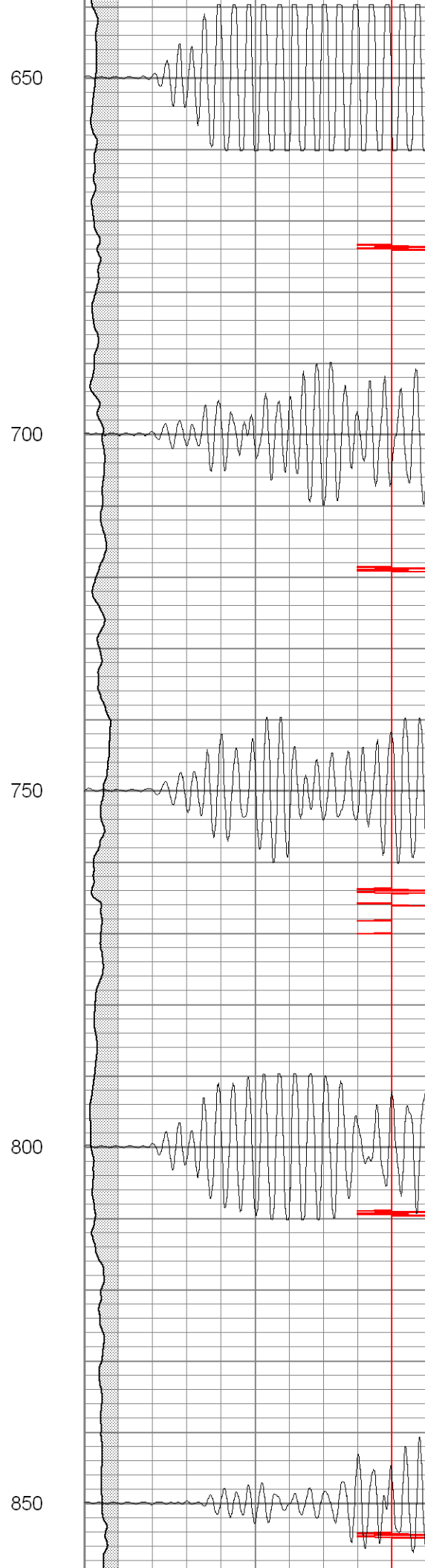
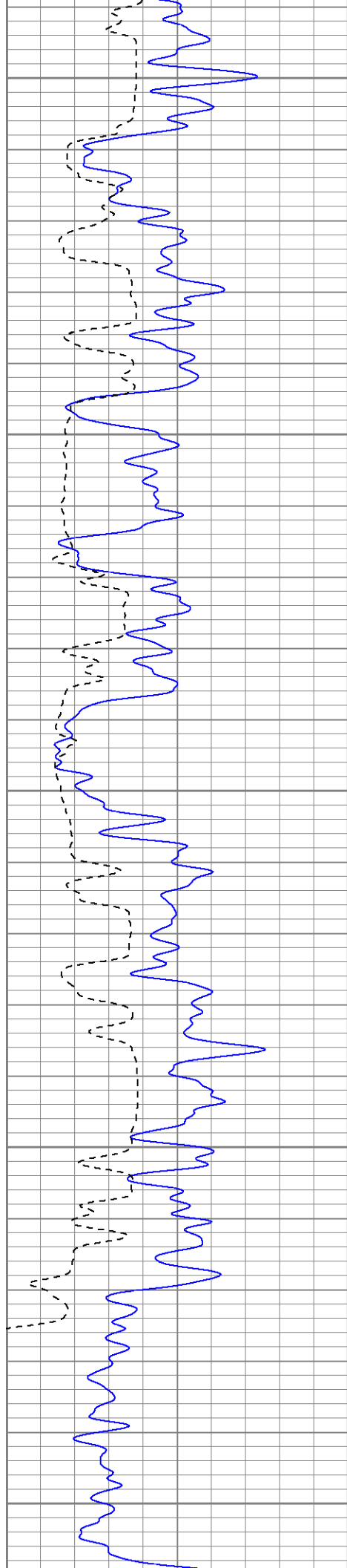
0	Amplitude (mV)	100
18	CCL	-2
<hr/>		
200	CBL5	1200

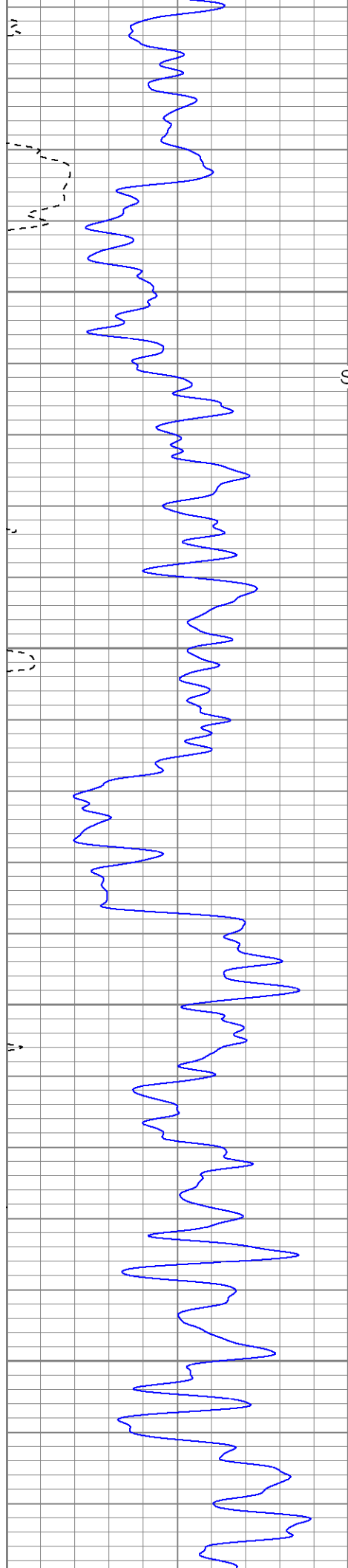
200 VDL 1200











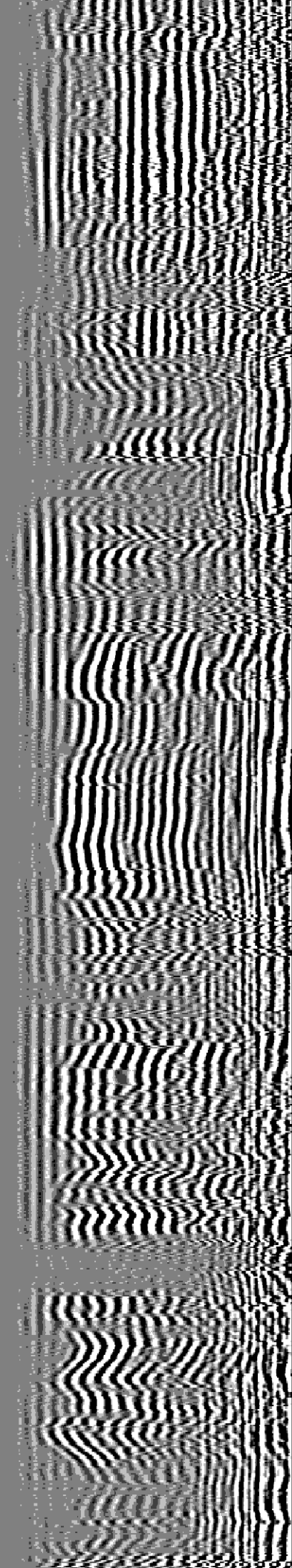
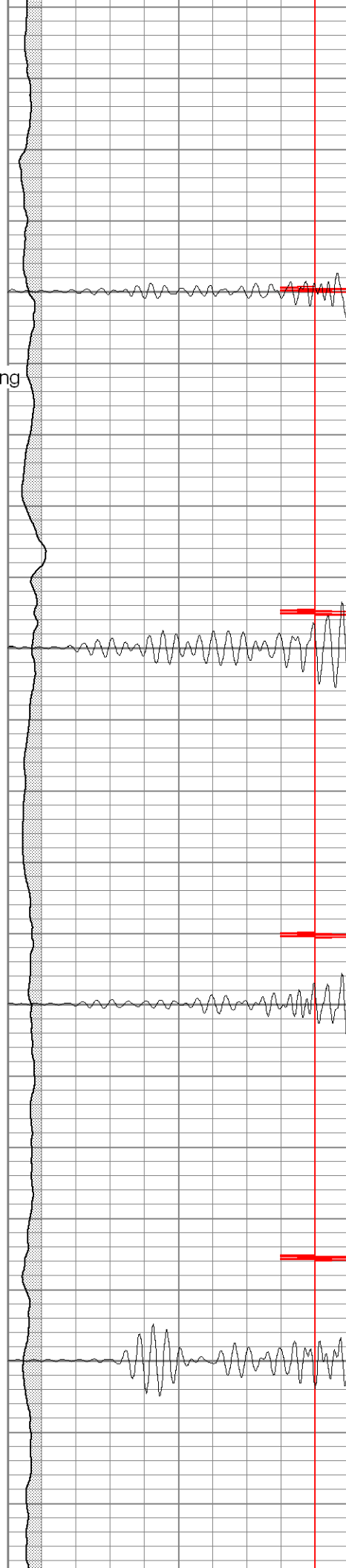
Surface Casing

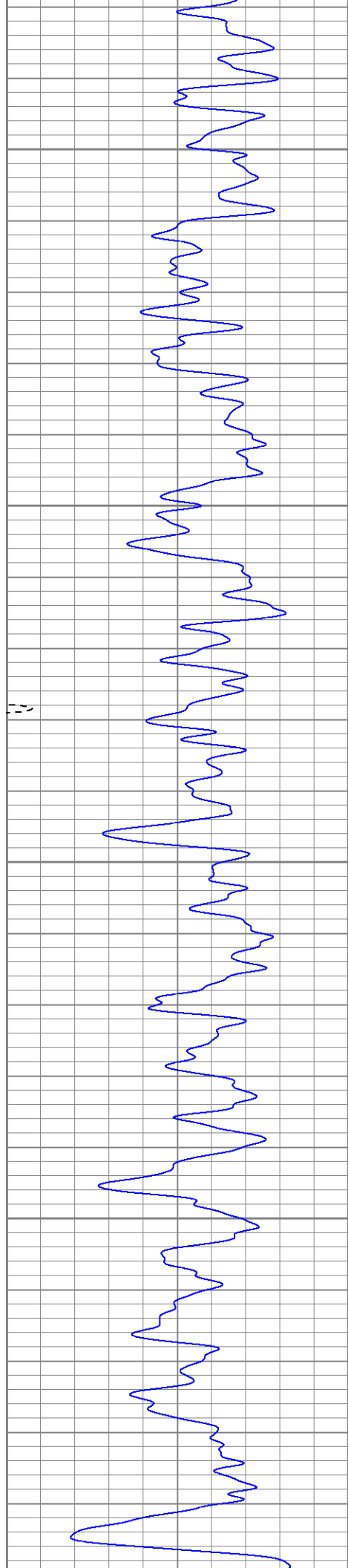
900

950

1000

1050



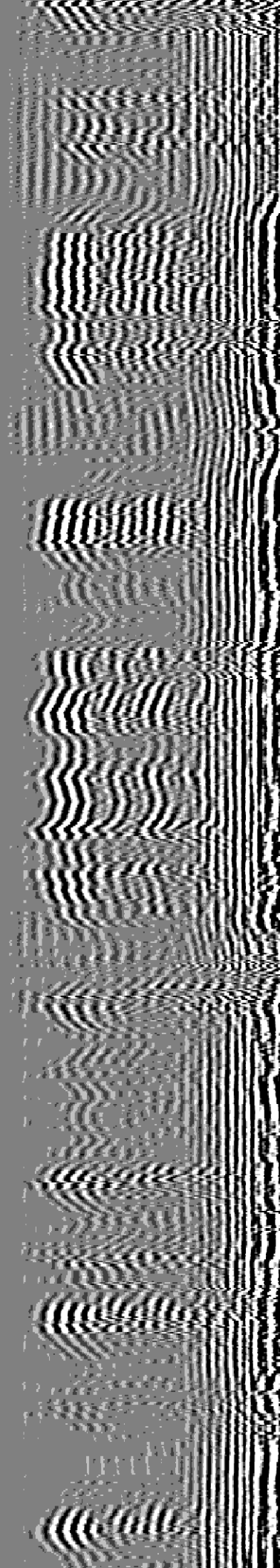
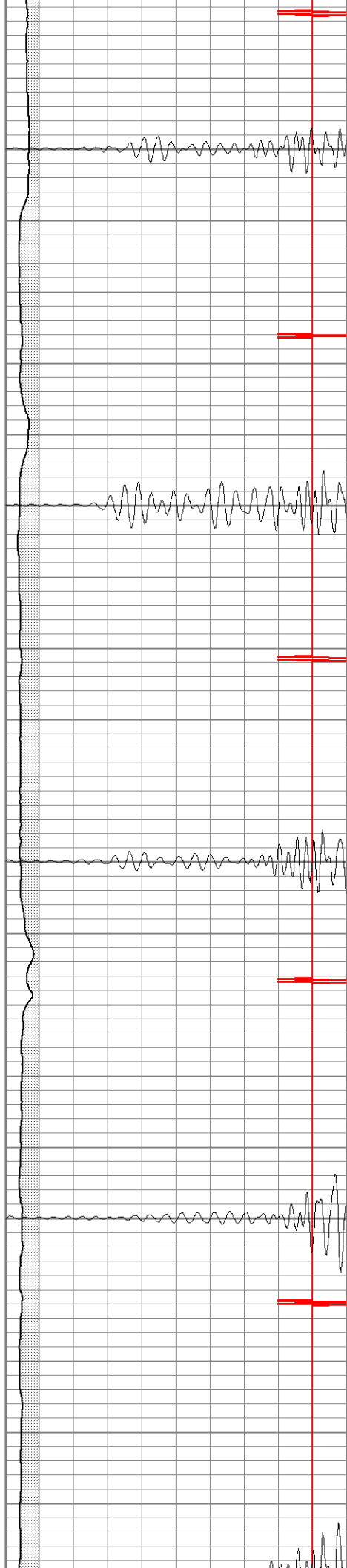


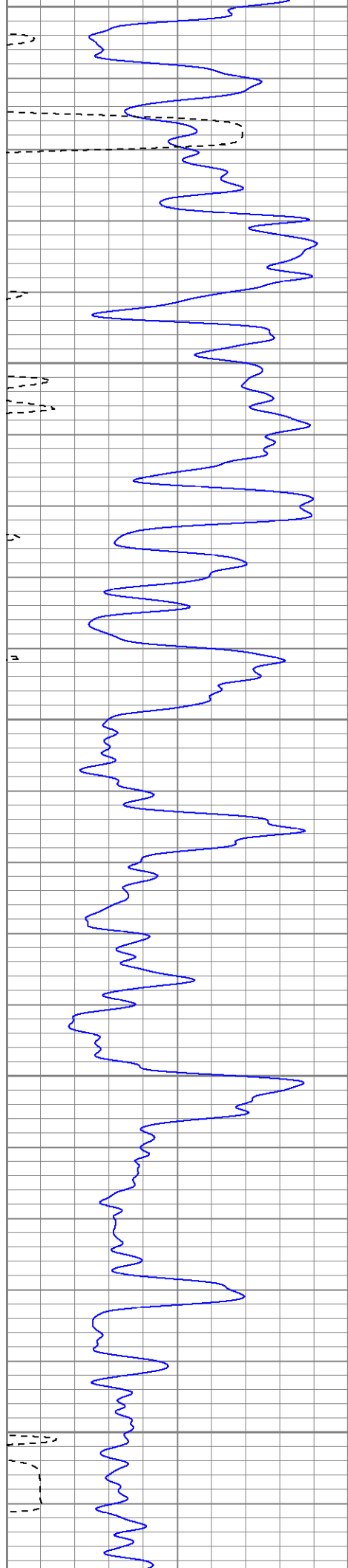
1100

1150

1200

1250





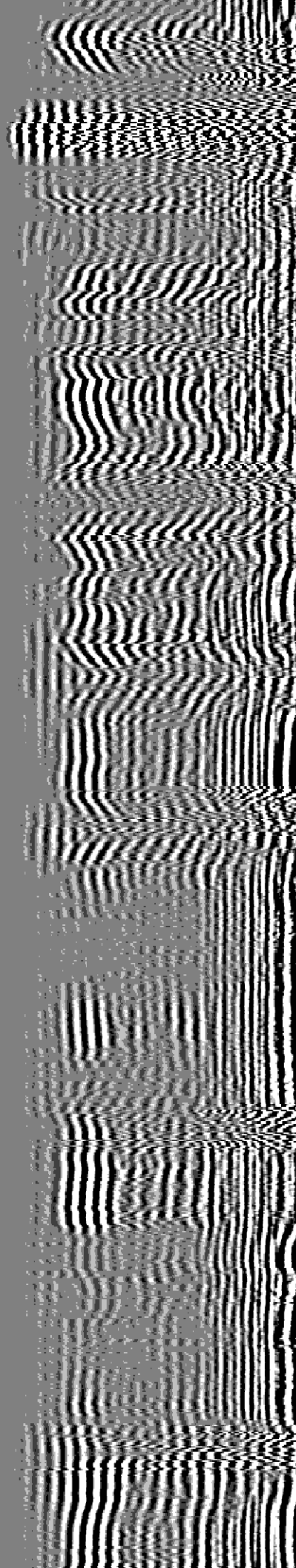
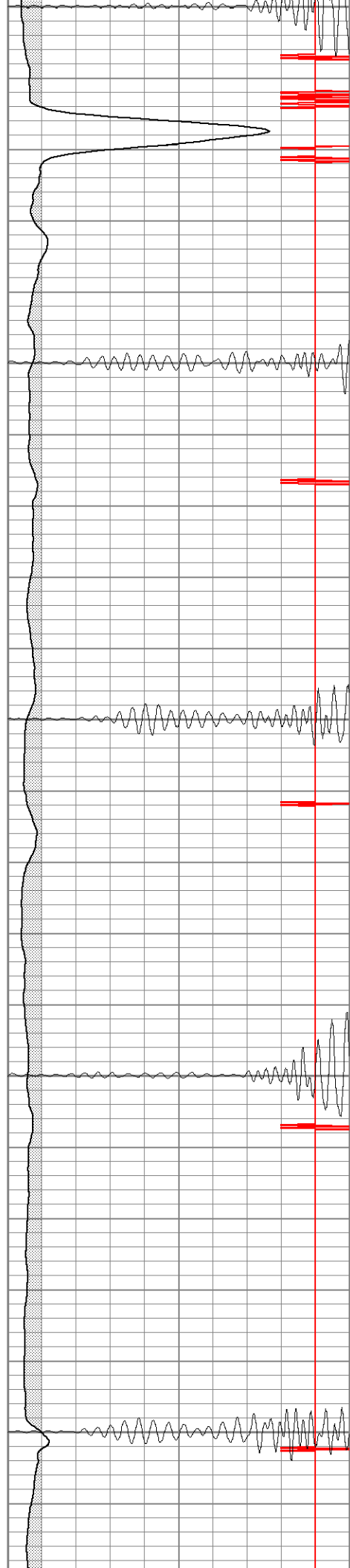
1300

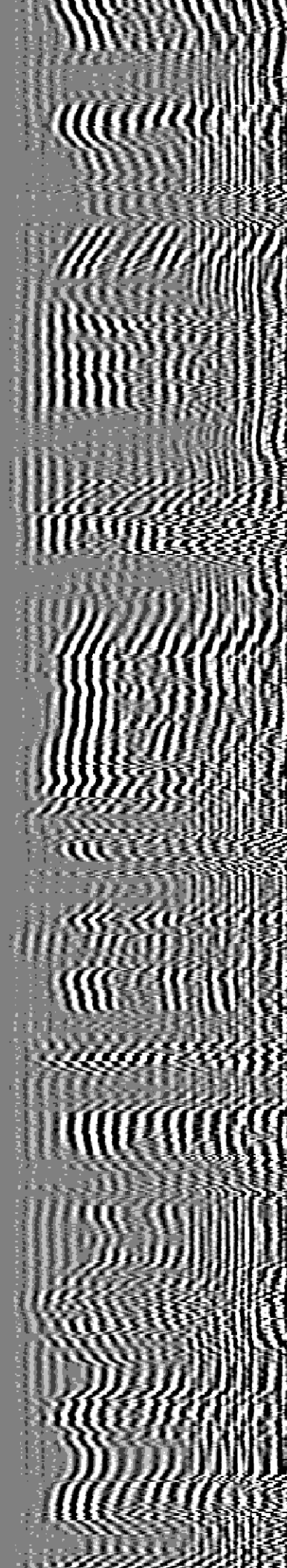
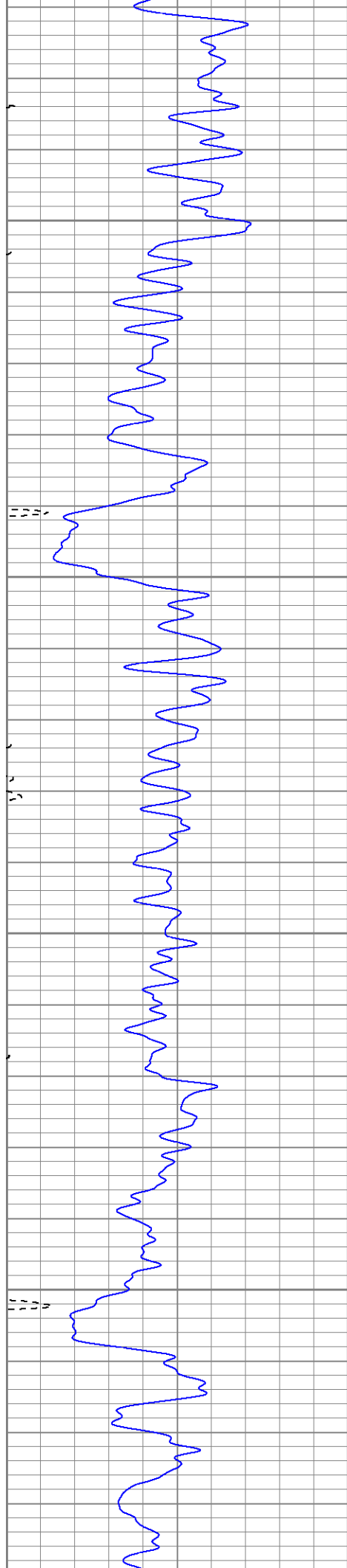
1350

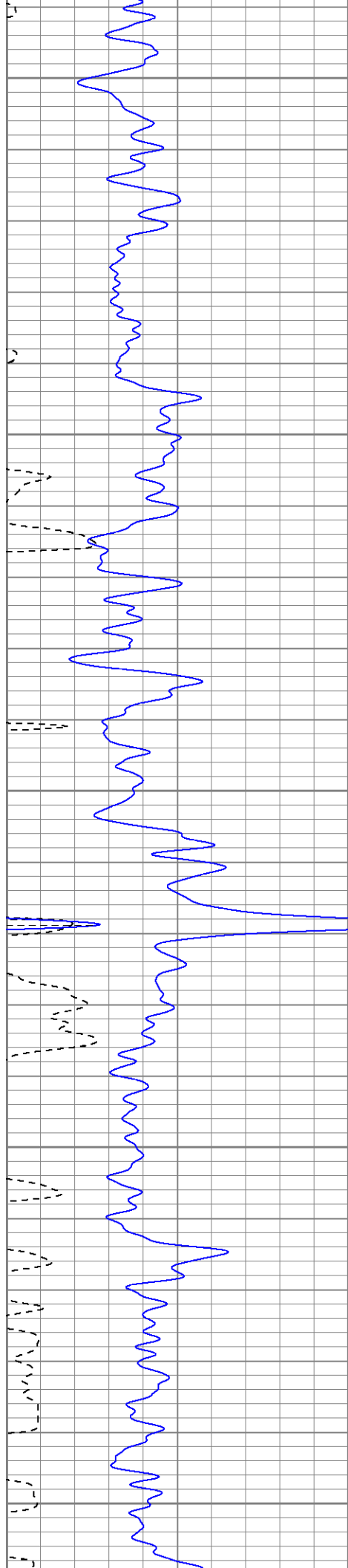
1400

1450

1500







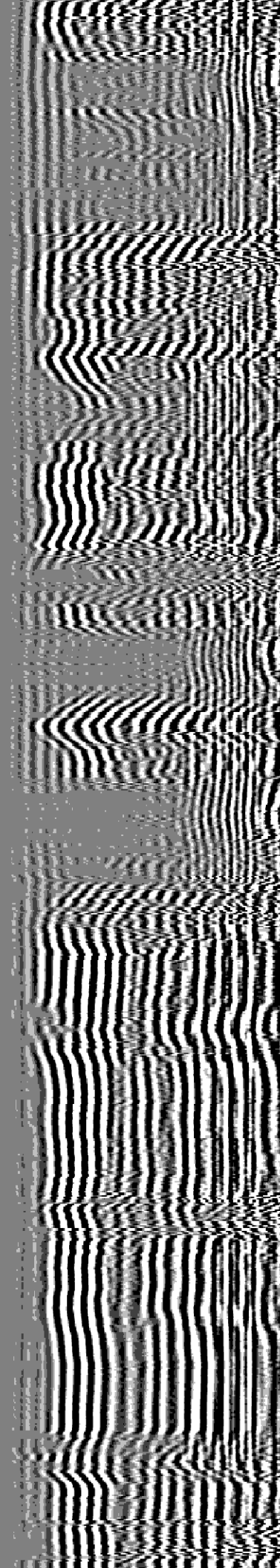
1750

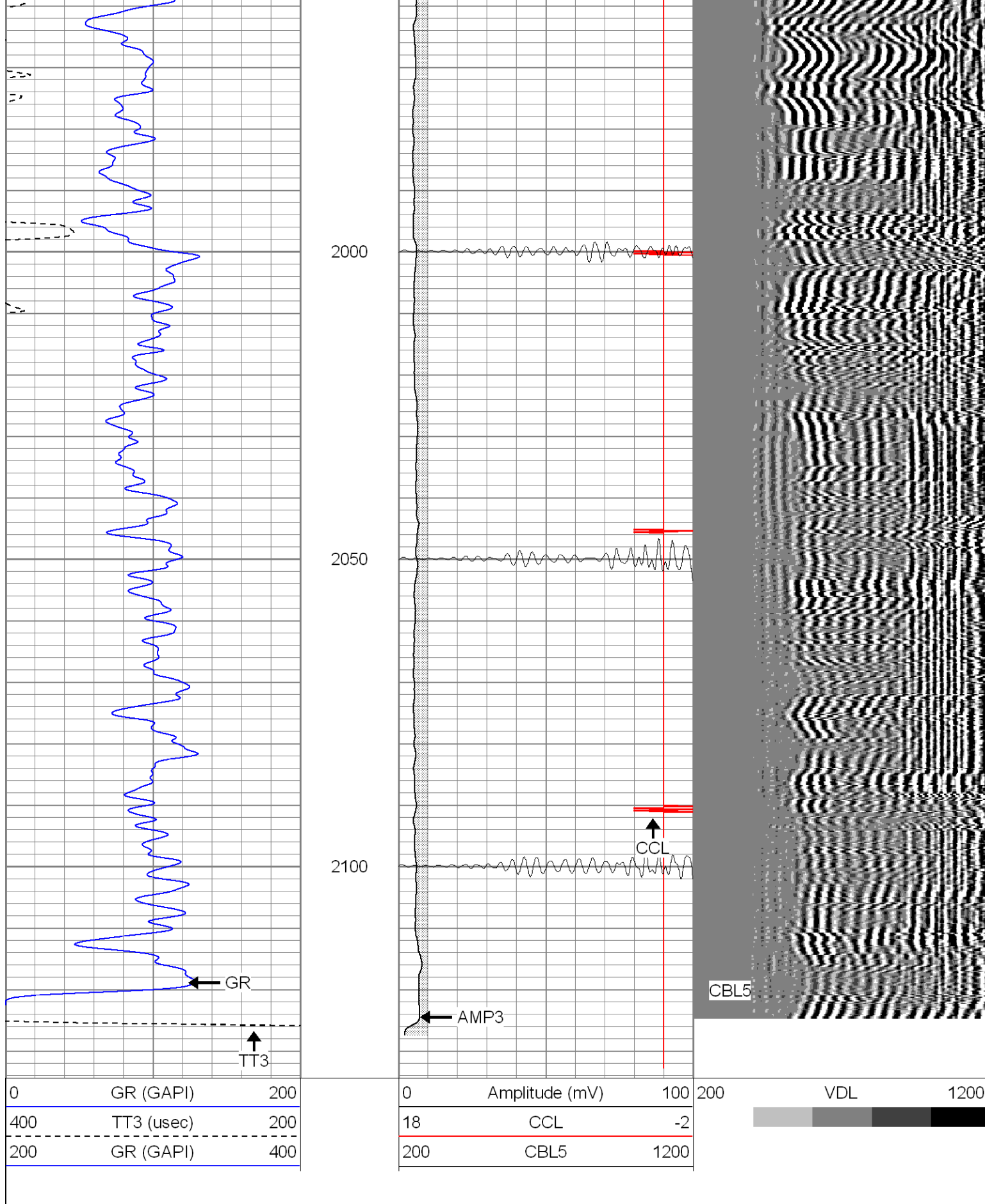
1800

1850

1900

1950





SUPERIOR

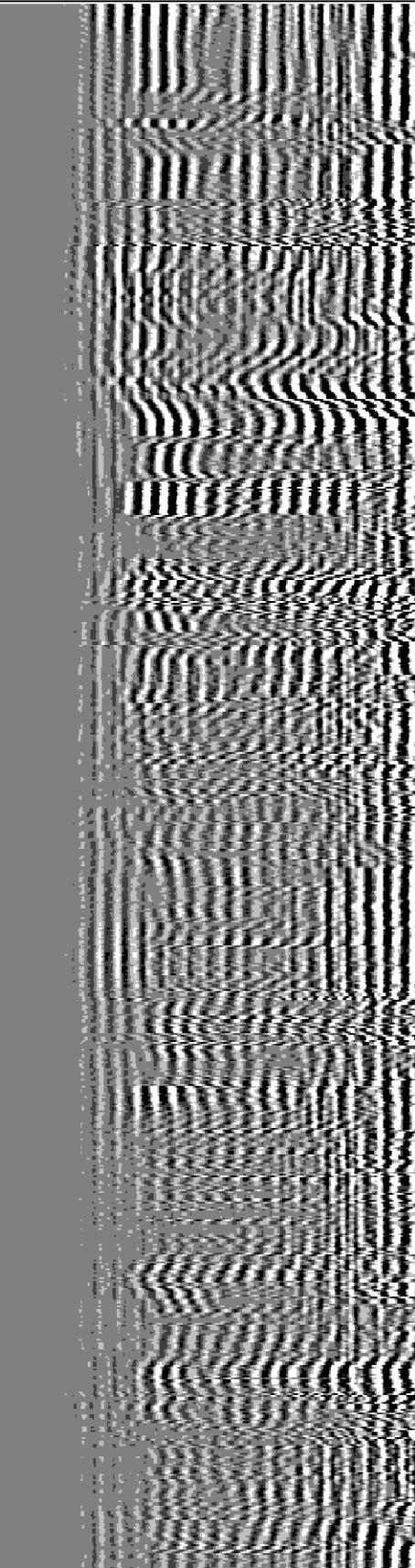
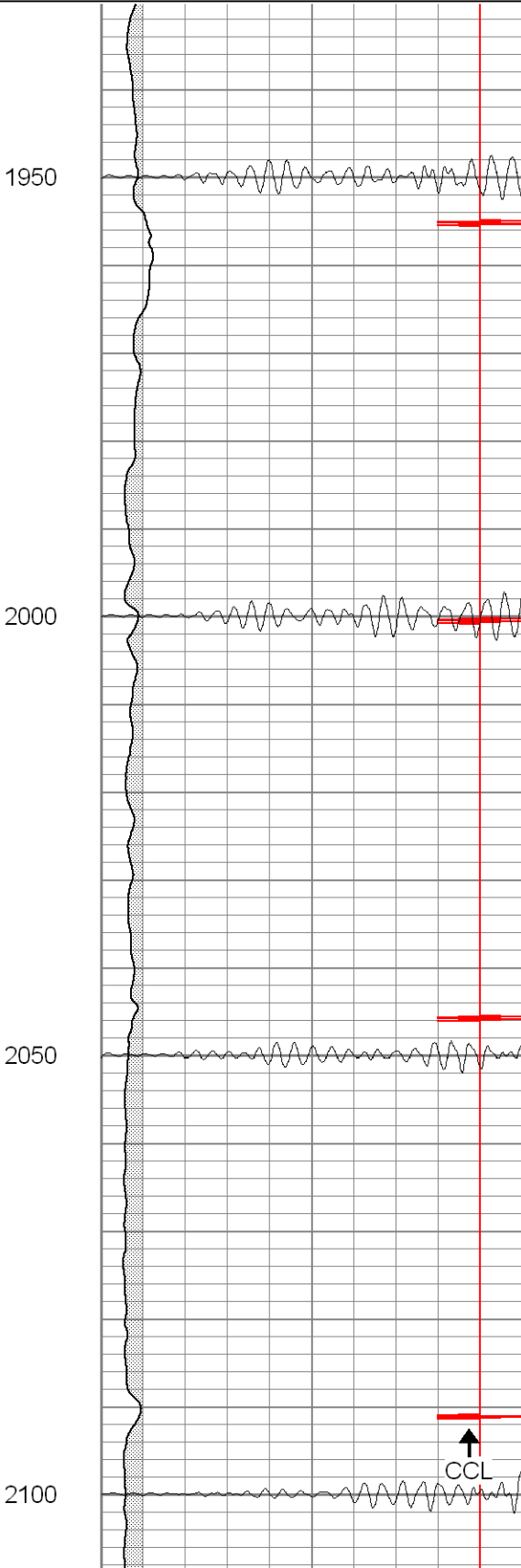
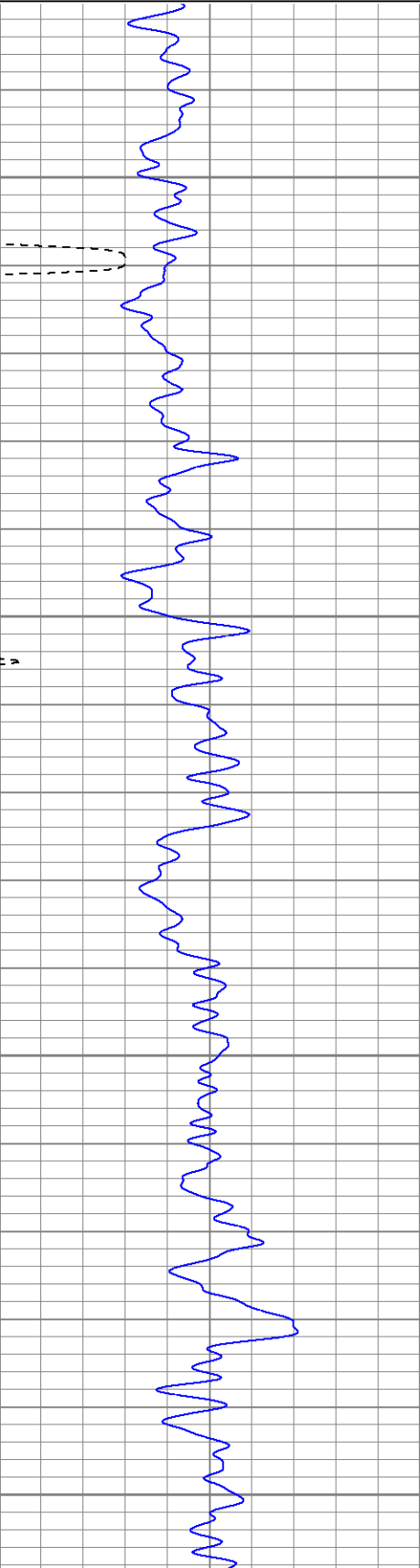
Black Lick, Pa.
Mercer, Pa.
Wooster, Oh.
Cleveland, Ok.
Trinidad, Co.

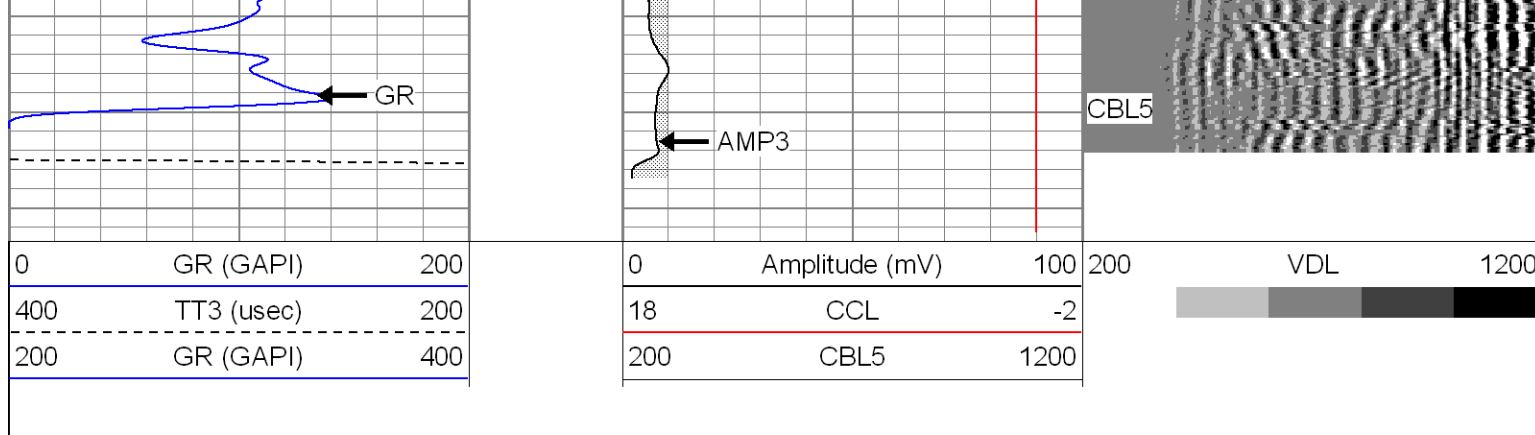
Repeat Section

Database File: xtone25-067708b.db
Dataset Pathname: pass1
Presentation Format: cblrt
Dataset Creation: Mon Jul 07 15:15:33 2008 by Log Open-Cased 071220
Charted by: Depth in Feet scaled 1:240

0	GR (GAPI)	200
400	TT3 (usec)	200
200	GR (GAPI)	400


0	Amplitude (mV)	100
18	CCL	-2
200	CBL5	1200





Calibration Report				
Database File:	xtone25-067708b.db			
Dataset Pathname:	pass1			
Dataset Creation:	Mon Jul 07 15:15:33 2008 by Log Open-Cased 071220			
Cement Bond Log Calibration Report				
Serial Number:	Titan5			
Tool Model:	T5			
Performed:	Thu Jul 03 10:23:25 2008			
Depth:	2424.98	ft		
Casing Diameter:	5.5	in		
	3' Spacing	5' Spacing		
Signal Zero:	1	1	mV	
Calibrated Amplitude:	85	85	mV	
Reading at Signal Zero:	-0.02	0	V	
Reading in Free Pipe:	1.49	2.4	V	
Gain:	55.6291	35		
Offset:	2.11258	1		
Gamma Ray Calibration Report				
Serial Number:	Titan5			
Tool Model:	T2			
Performed:	Wed Jul 02 08:27:42 2008			
Calibrator Value:	200.0	GAPI		
Background Reading:	54.0	cps		
Calibrator Reading:	219.0	cps		
Sensitivity:	0.9900	GAPI/cps		

Sensor	Offset (ft)	Schematic	Description	Len (ft)	OD (in)	Wt (lb)
GR	13.64		X	3.00	1.69	25.00
			GR-T2 (Titan5)	2.52	1.69	25.00
WVF5 WVF3	9.49 8.49		CBL-T5 (Titan5)	7.23	2.44	110.00

CCL	0.83		3.00	1.69	25.00
			2.15	2.75	15.00

Dataset:

xtone25-067708b.db: field/well/run1/pass1

Total Length:

17.91 ft

Total Weight:

200.00 lb

O.D.

2.75 in