



SUPERIOR
Black Lick, Pa.
Mercer, Pa.
Wooster, Oh.
Cleveland, Ok.
Trinidad, Co.

DUAL INDUCTION LOG

Company XTO Energy Inc.
Well Golden Eagle 33-03
Field Purgatoire River
County Las Animas State Colorado

Location: API # : 05 071 09508 00

659' FNL & 2035' FWL

SEC 33 TWP 33S RGE 67W

Permanent Datum Ground Level Elevation 7416'
Log Measured From Ground Level
Drilling Measured From Ground Level

Other Services
CDL
NEUTRON
Elevation
K.B. -----
D.F. -----
G.L. 7416'

Date 7-7-08

Run Number One

Depth Driller 2150'

Depth Logger 2142'

Bottom Logged Interval 2139'

Top Log Interval Surface Casing

Casing Driller 8 5/8" @ 490'

Casing Logger 489'

Bit Size 7 7/8"

Type Fluid in Hole Water

Density / Viscosity ///

pH / Fluid Loss ///

Source of Sample ///

Rm @ Meas. Temp ///

Rmf @ Meas. Temp ///

Rmc @ Meas. Temp ///

Source of Rmf / Rmc ///

Rm @ BHT ///

Time Circulation Stopped 4:00 P.M.

Time Logger on Bottom 6:30 P.M.

Maximum Recorded Temperature 118 DEG F

Equipment Number T697

Location Trinidad

Recorded By J. Cappellucci

Witnessed By Mr. Don Johnson

<<< Fold Here >>>

All interpretations are opinions based on inferences from electrical or other measurements and we cannot and do not guarantee the accuracy or correctness of any interpretation, and we shall not, except in the case of gross or willful negligence on our part, be liable or responsible for any loss, costs, damages, or expenses incurred or sustained by anyone resulting from any interpretation made by any of our officers, agents or employees. These interpretations are also subject to our general terms and conditions set out in our current Price Schedule.

Comments

Well Directions:
Drive Past Weston, at Substation on right take left through white gate,
go thru green gate, stay right, drive thru two locations, at Y stay left go uphill,
at top at Y stay left to location.



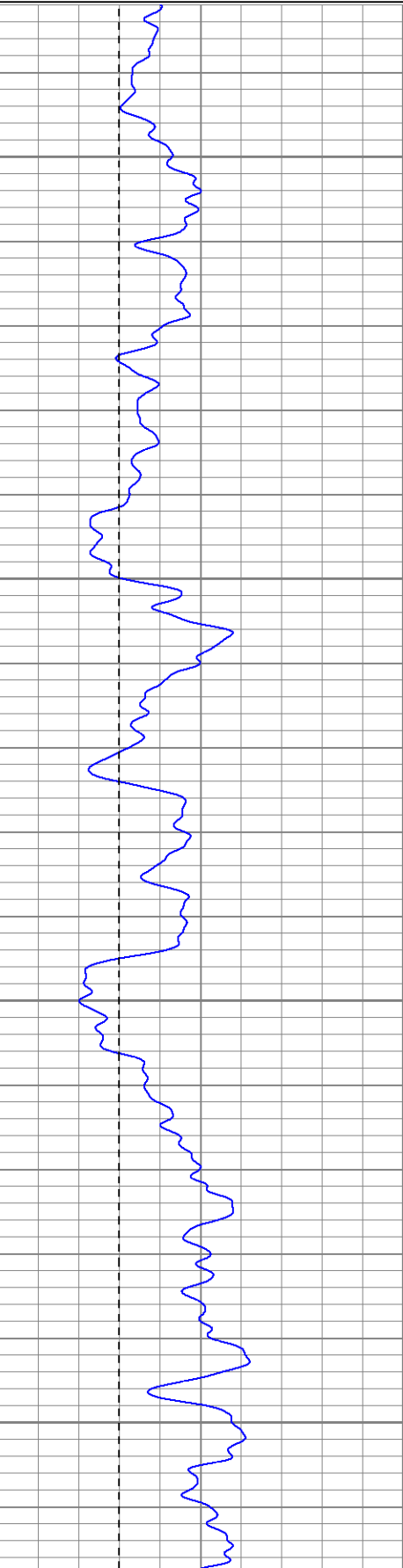
SUPERIOR
Black Lick, Pa.
Mercer, Pa.
Wooster, Oh.
Cleveland, Ok.
Trinidad, Co.

Main Pass

Database File: xtoge3303.db
Dataset Pathname: pass2.1
Presentation Format: dil
Dataset Creation: Mon Jul 07 20:07:19 2008 by Calc Open-Cased 070814
Charted by: Depth in Feet scaled 1:240

0	GR (GAPI)	200
-200	SP (mV)	0

0.2	RILM (Ohm-m)	2000
0.2	RILD (Ohm-m)	2000
0.2	RLL3 (Ohm-m)	2000

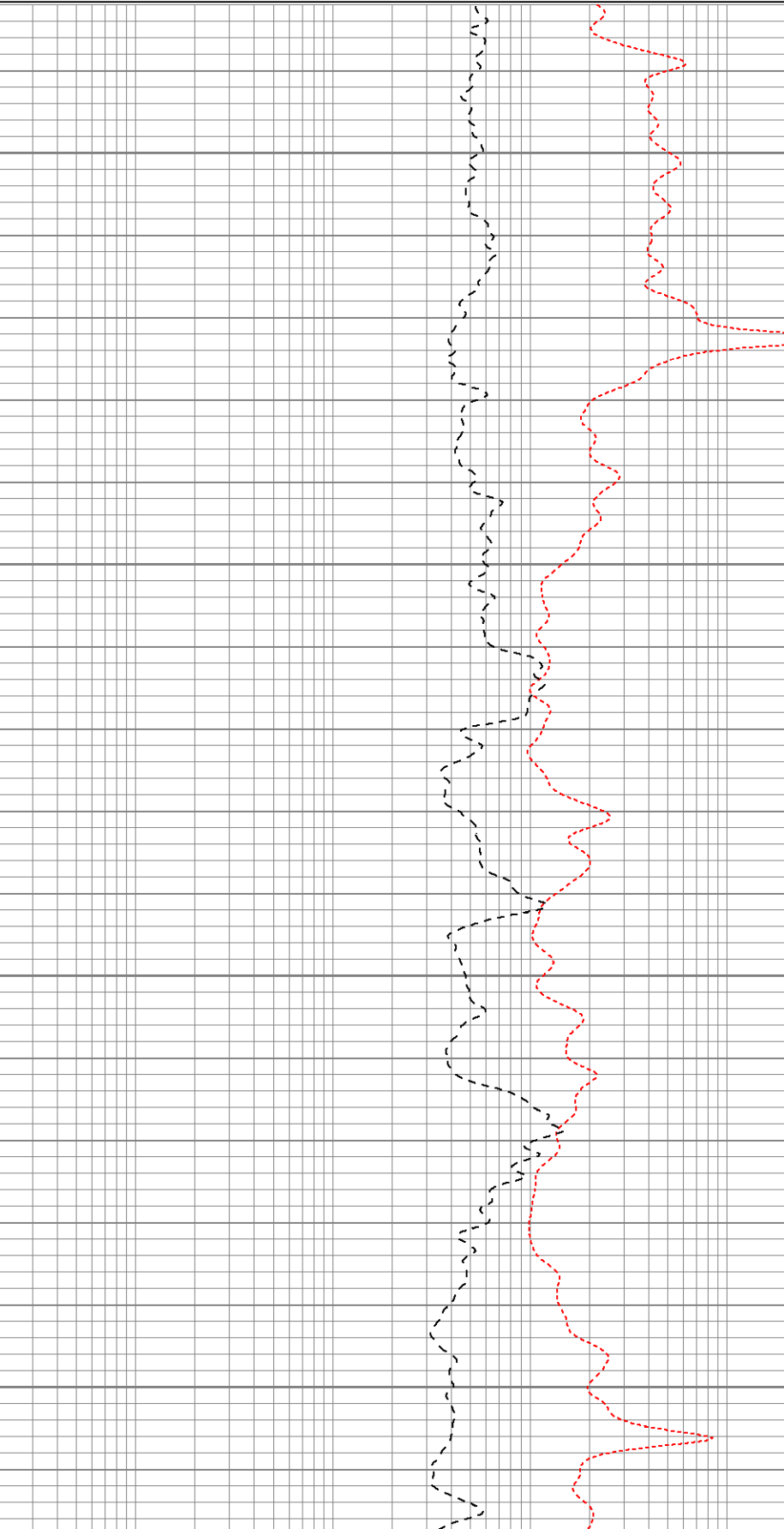


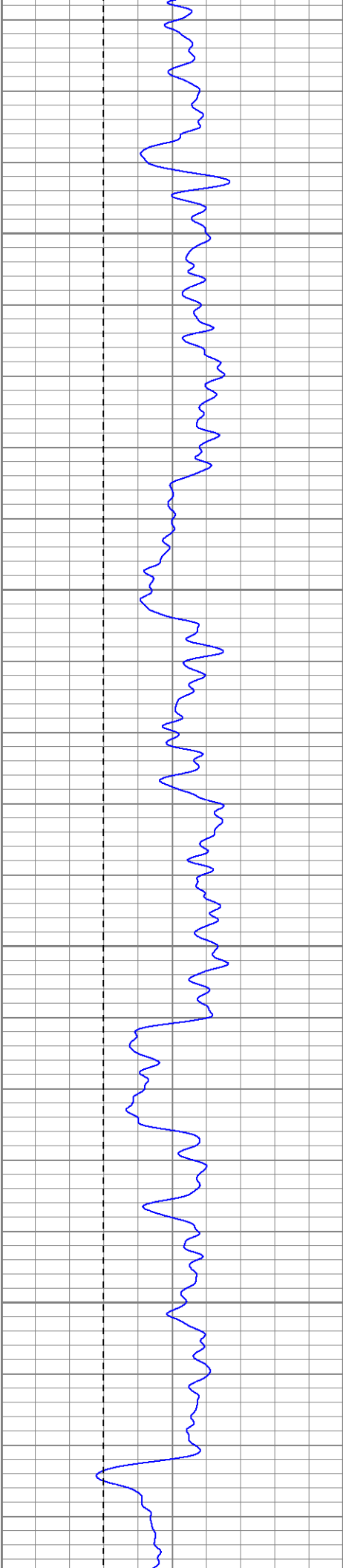
50

100

150

200



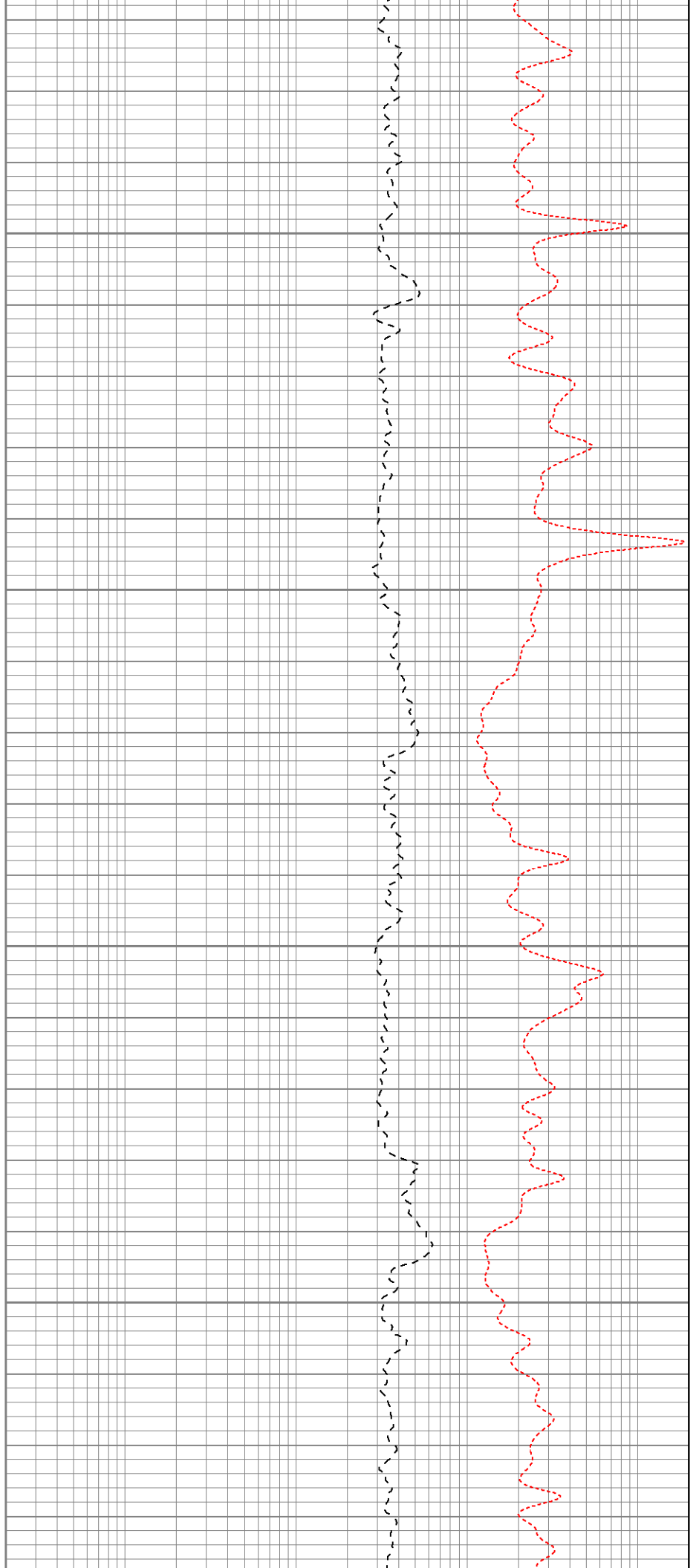


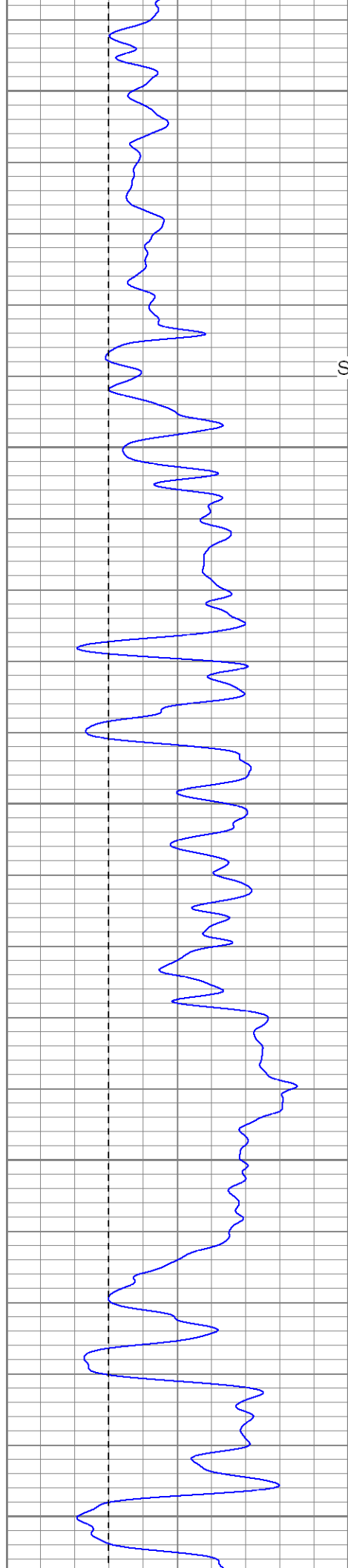
250

300

350

400





450

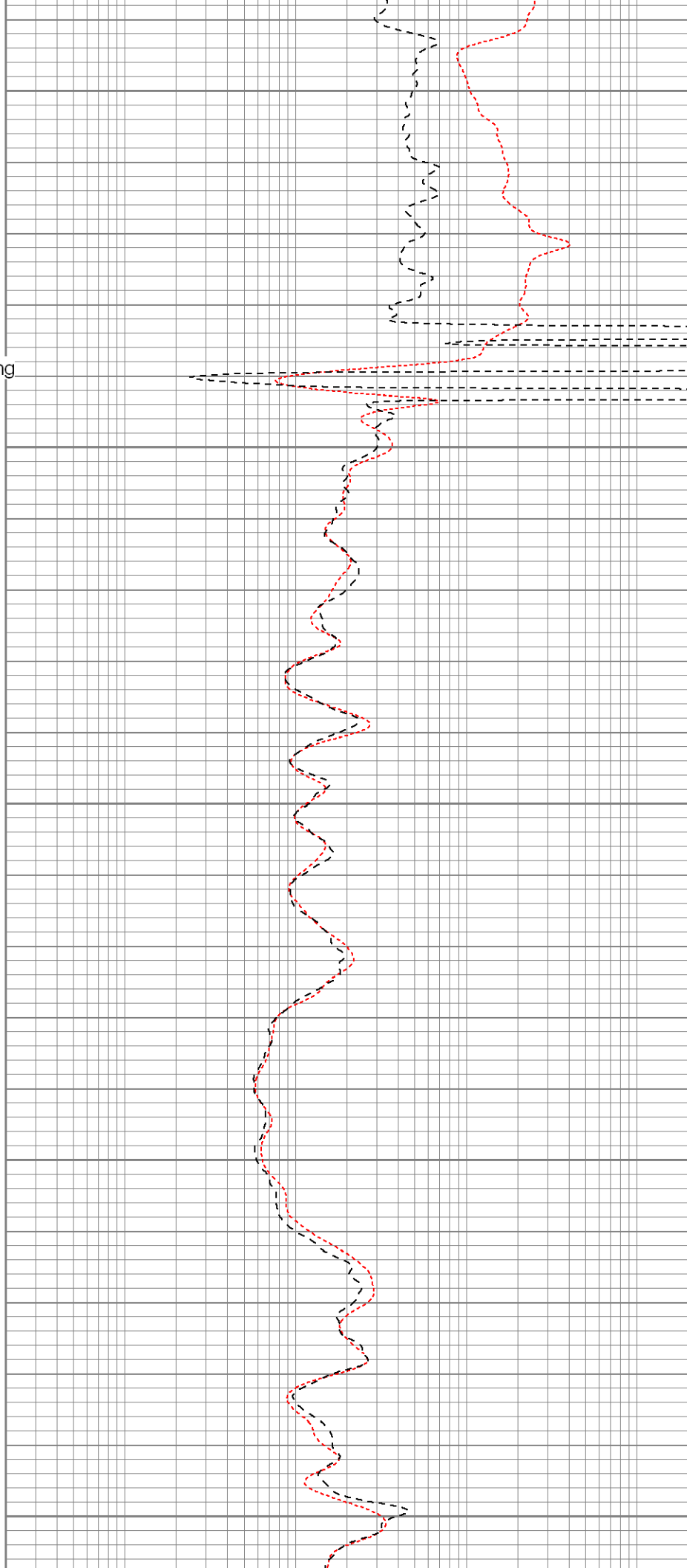
Surface Casing

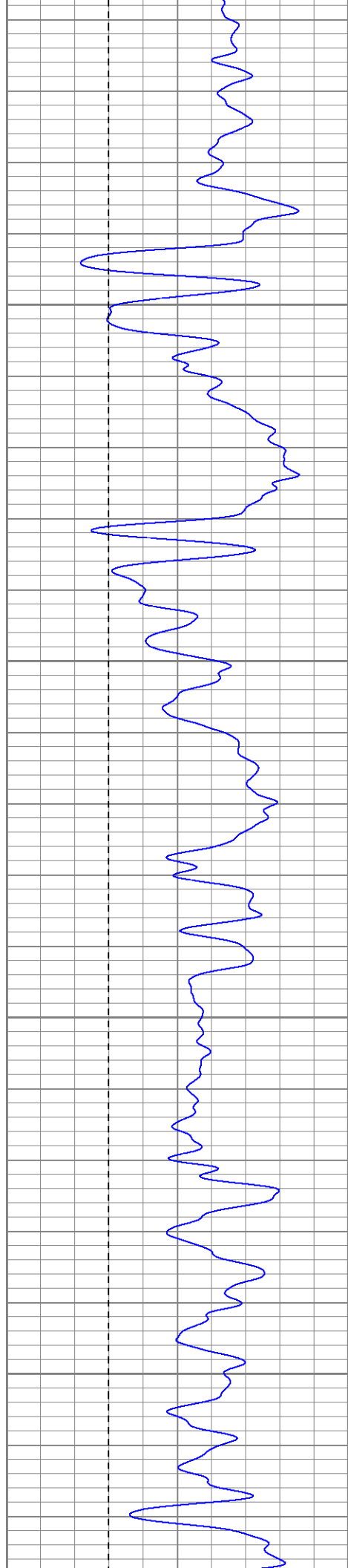
500

550

600

650



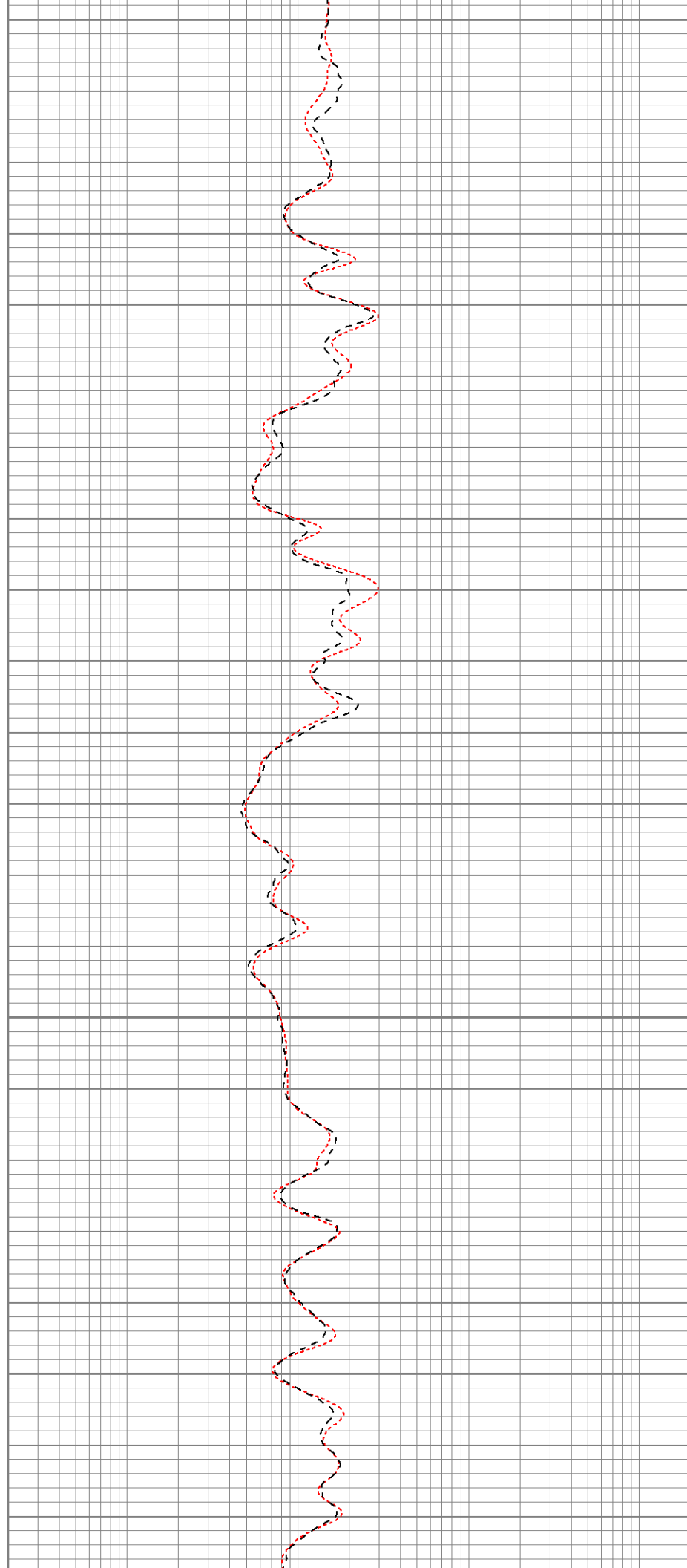


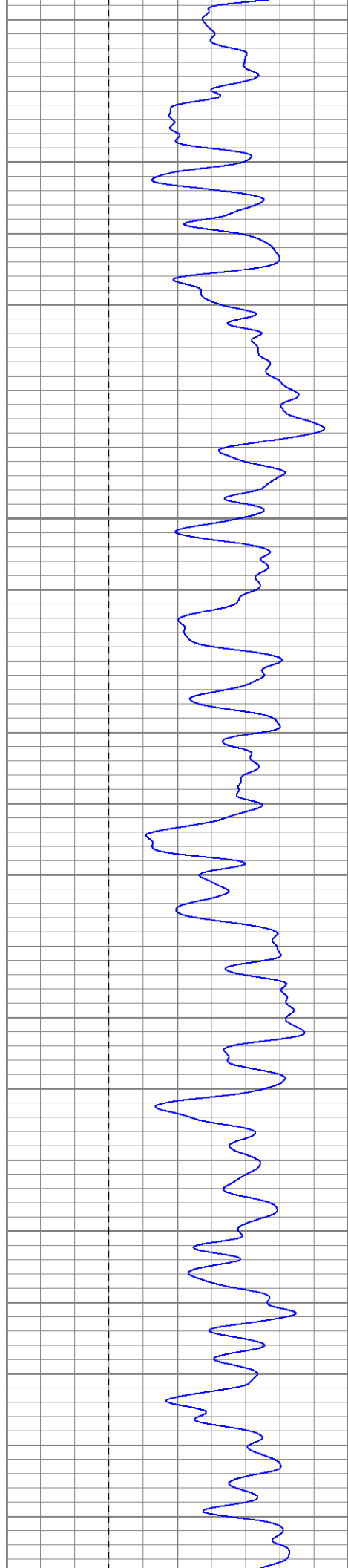
700

750

800

850



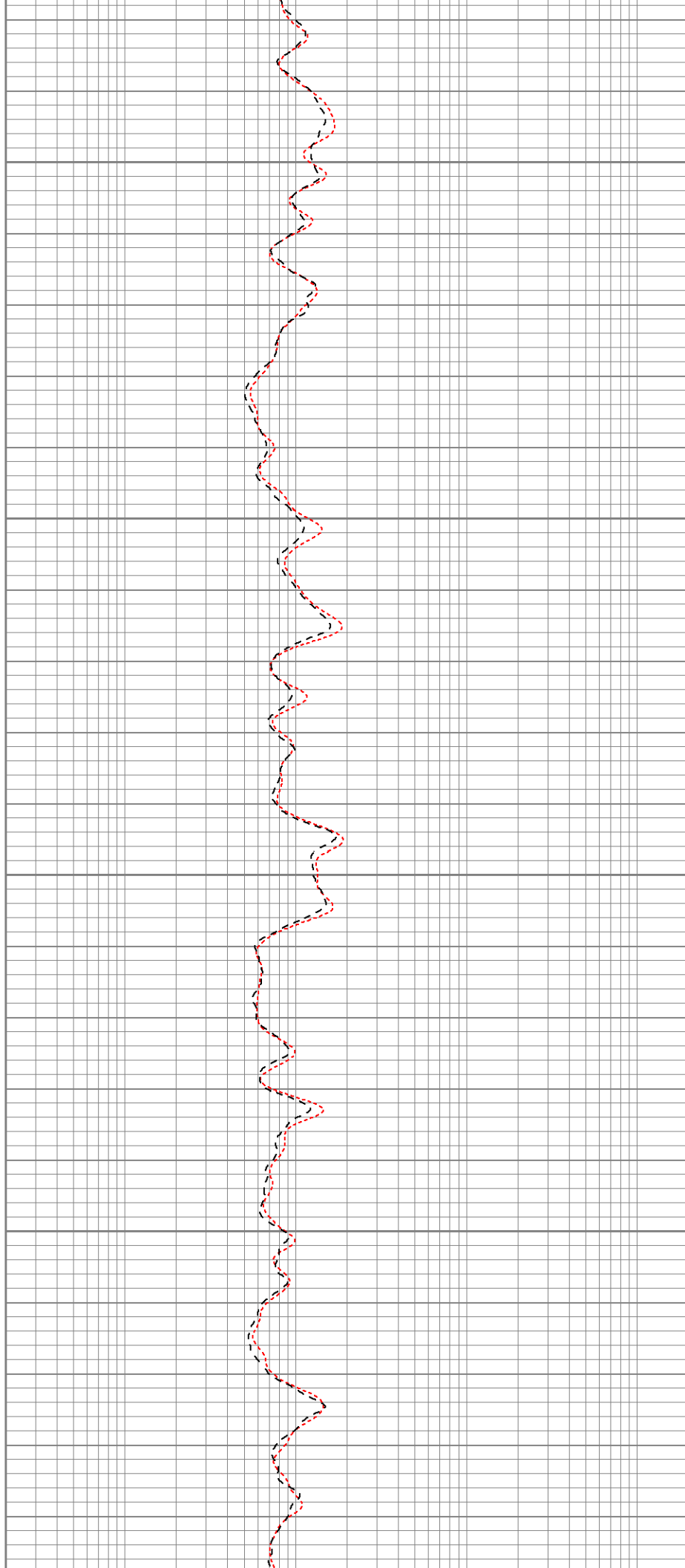


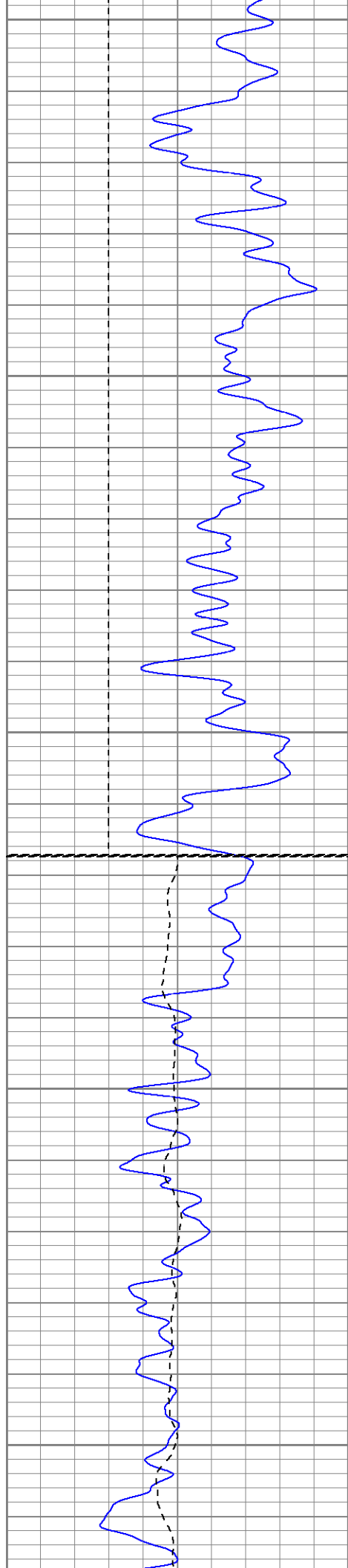
900

950

1000

1050





1100

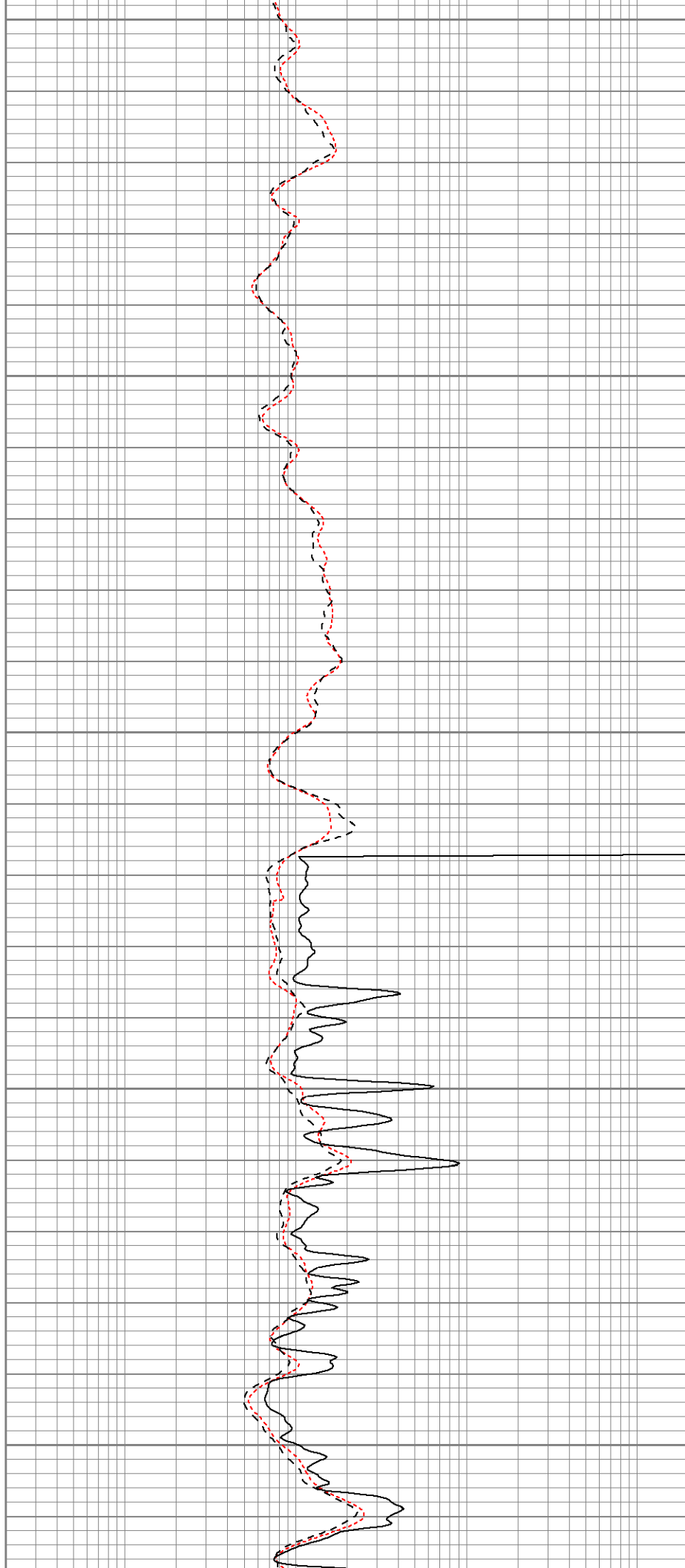
1150

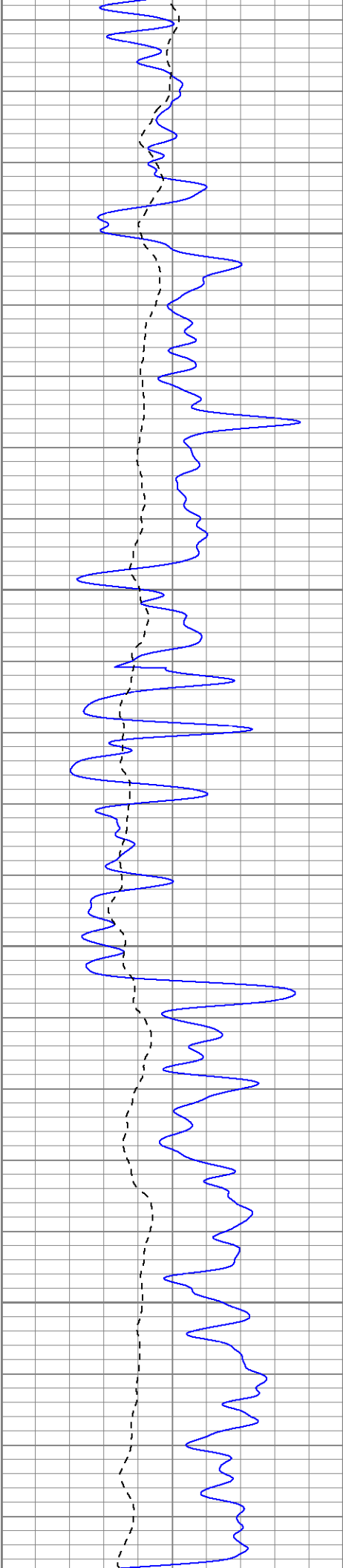
1200

Fluid Level

1250

1300



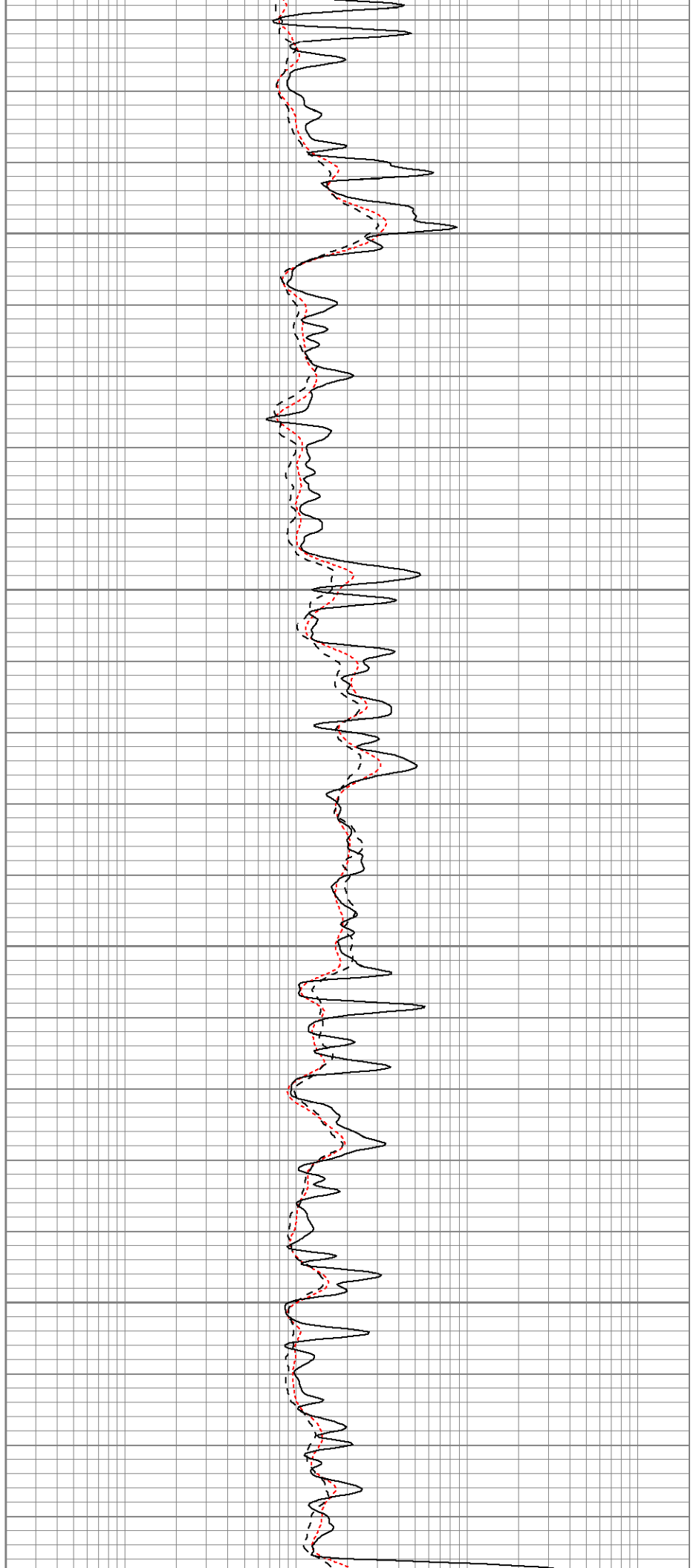


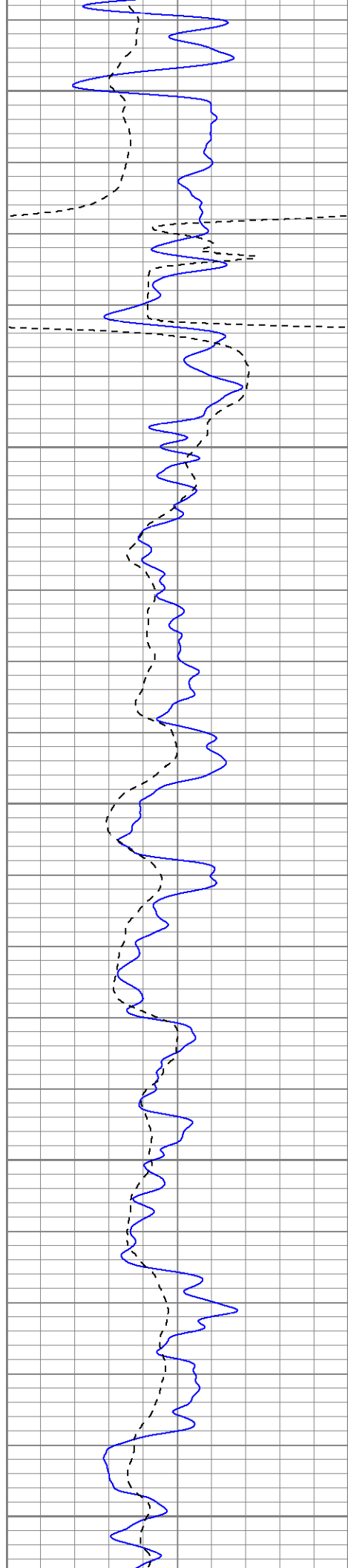
1350

1400

1450

1500





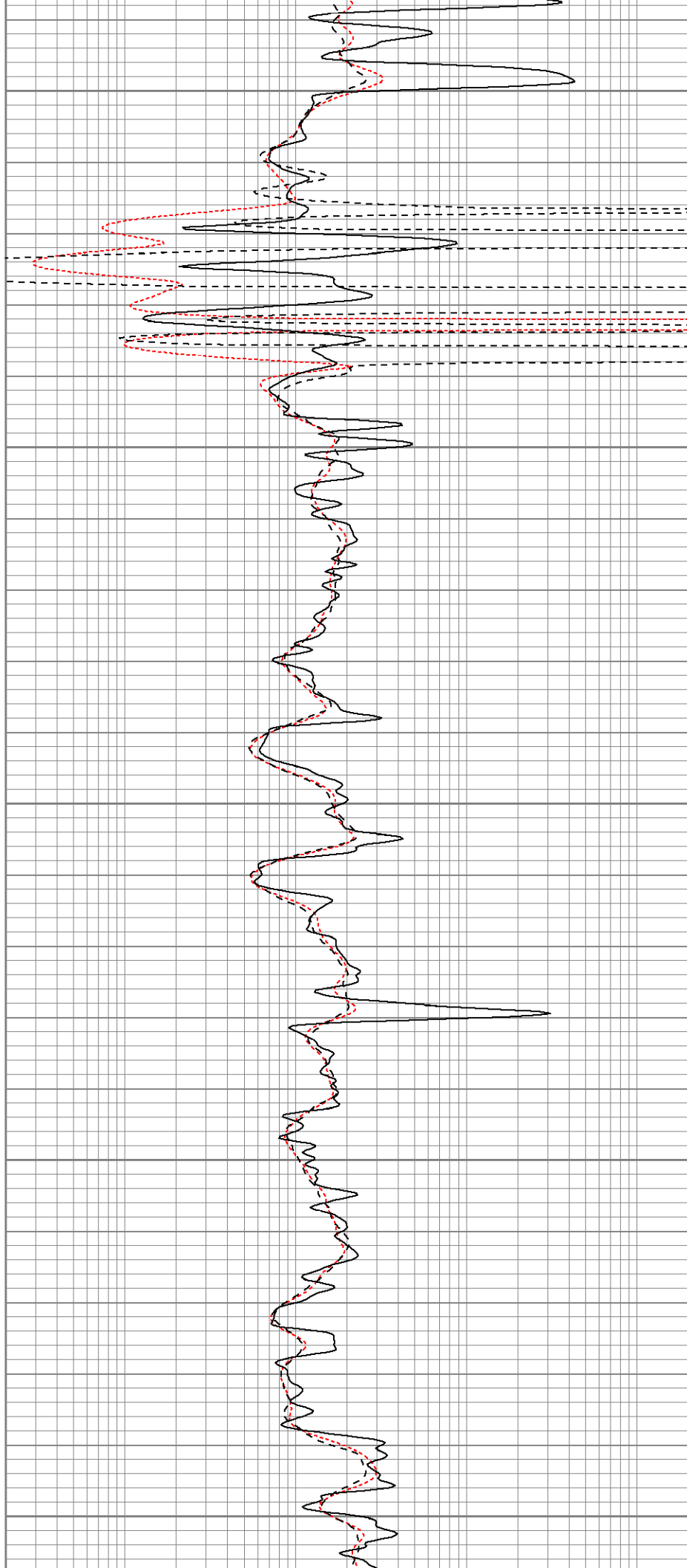
1550

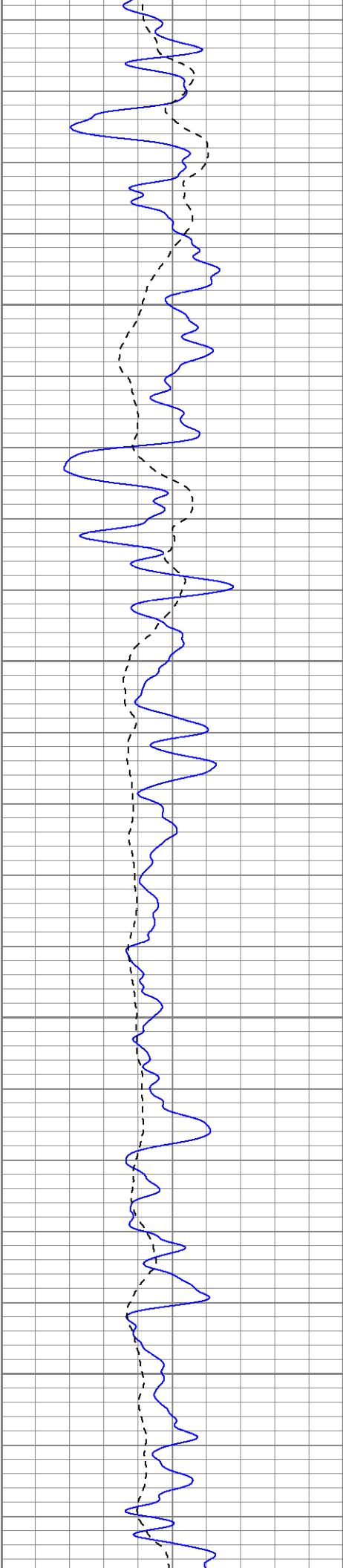
1600

1650

1700

1750



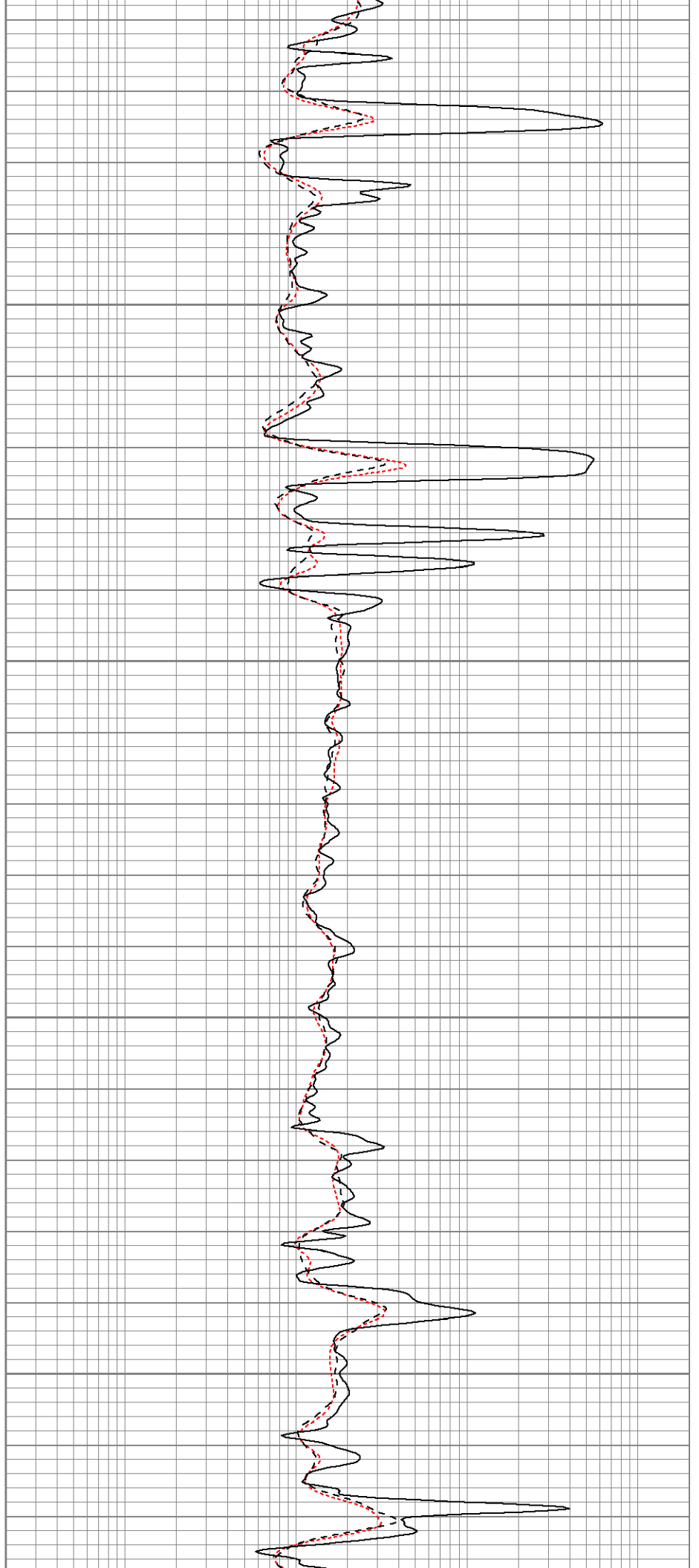


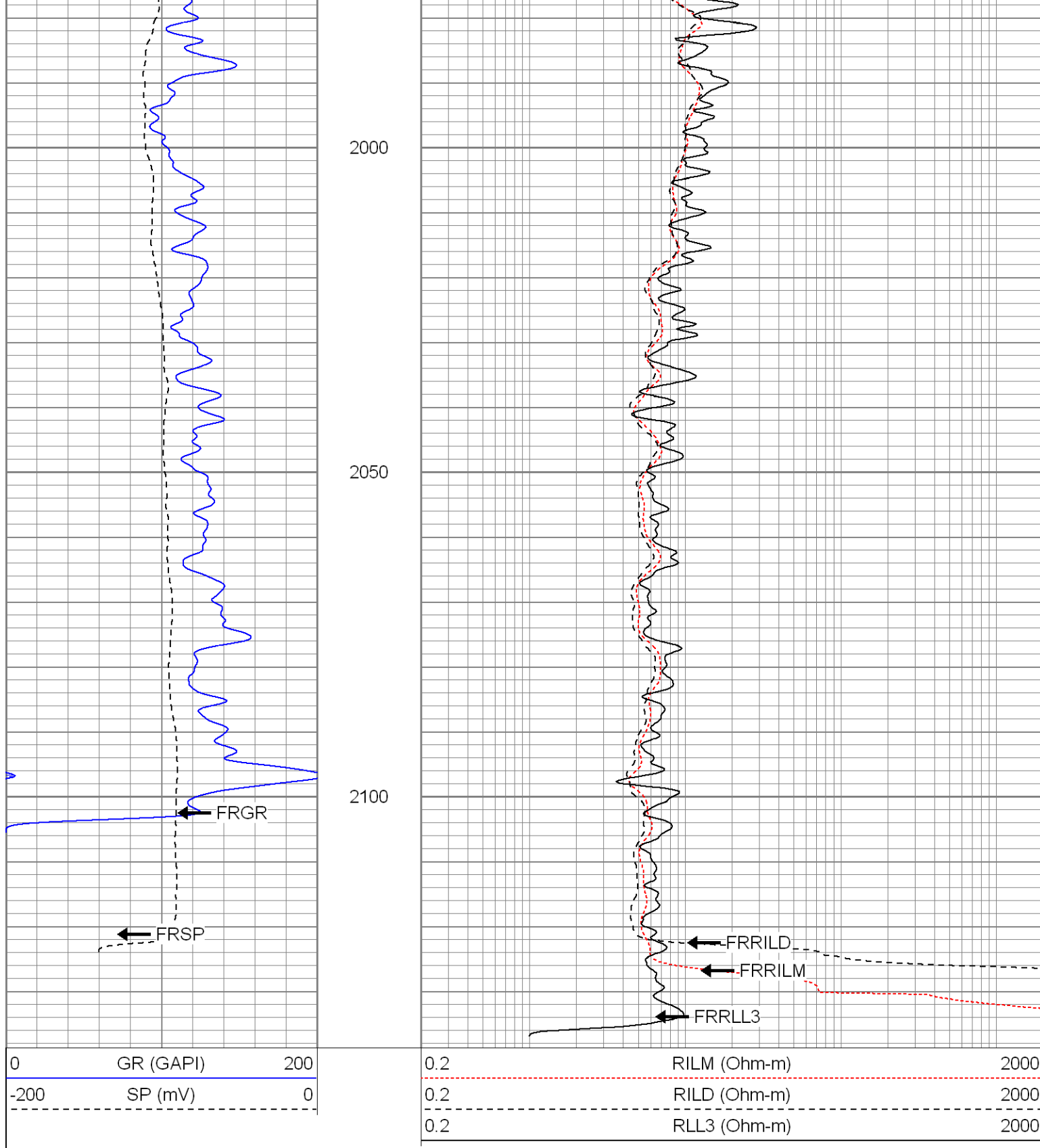
1800

1850

1900

1950





SUPERIOR

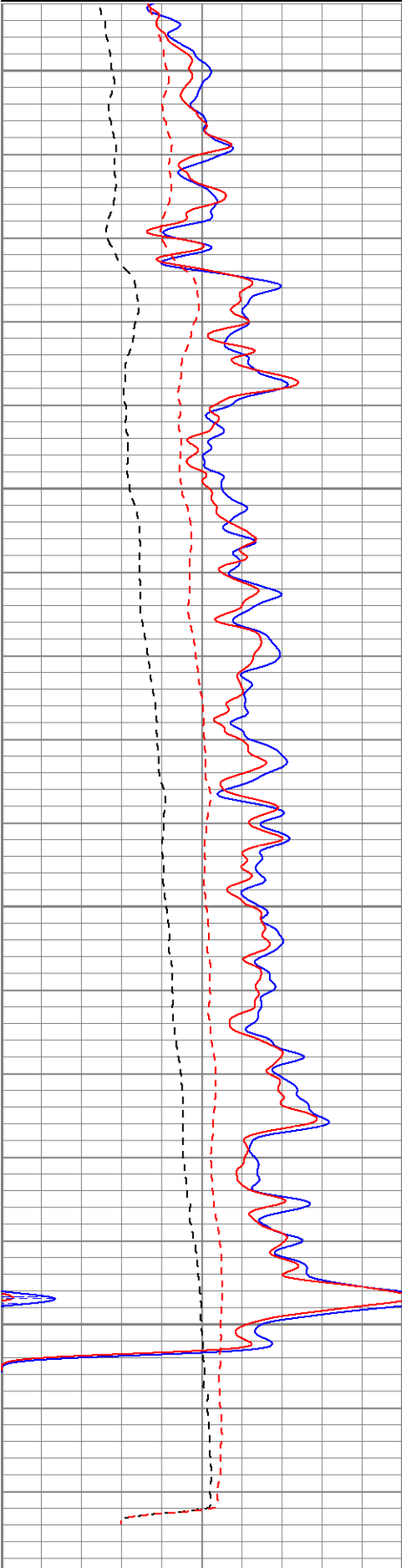
Black Lick, Pa.
Mercer, Pa.
Wooster, Oh.
Cleveland, Ok.
Trinidad, Co.

Repeat Pass

Database File: xtoge3303.db
Dataset Pathname: pass1.1
Presentation Format: dil
Dataset Creation: Mon Jul 07 19:04:03 2008 by Calc Open-Cased 070814
Charted by: Depth in Feet scaled 1:240

0	GR (GAPI)	200
-200	SP (mV)	0
0	GR-repeat (GAPI)	200
-200	SP-repeat (mV)	0

0.2	RILM (Ohm-m)	2000
0.2	RILD (Ohm-m)	2000
0.2	RLL3 (Ohm-m)	2000
0.2	RLL3-repeat (Ohm-m)	2000
0.2	RILM-repeat (Ohm-m)	2000
0.2	RILD-repeat (Ohm-m)	2000

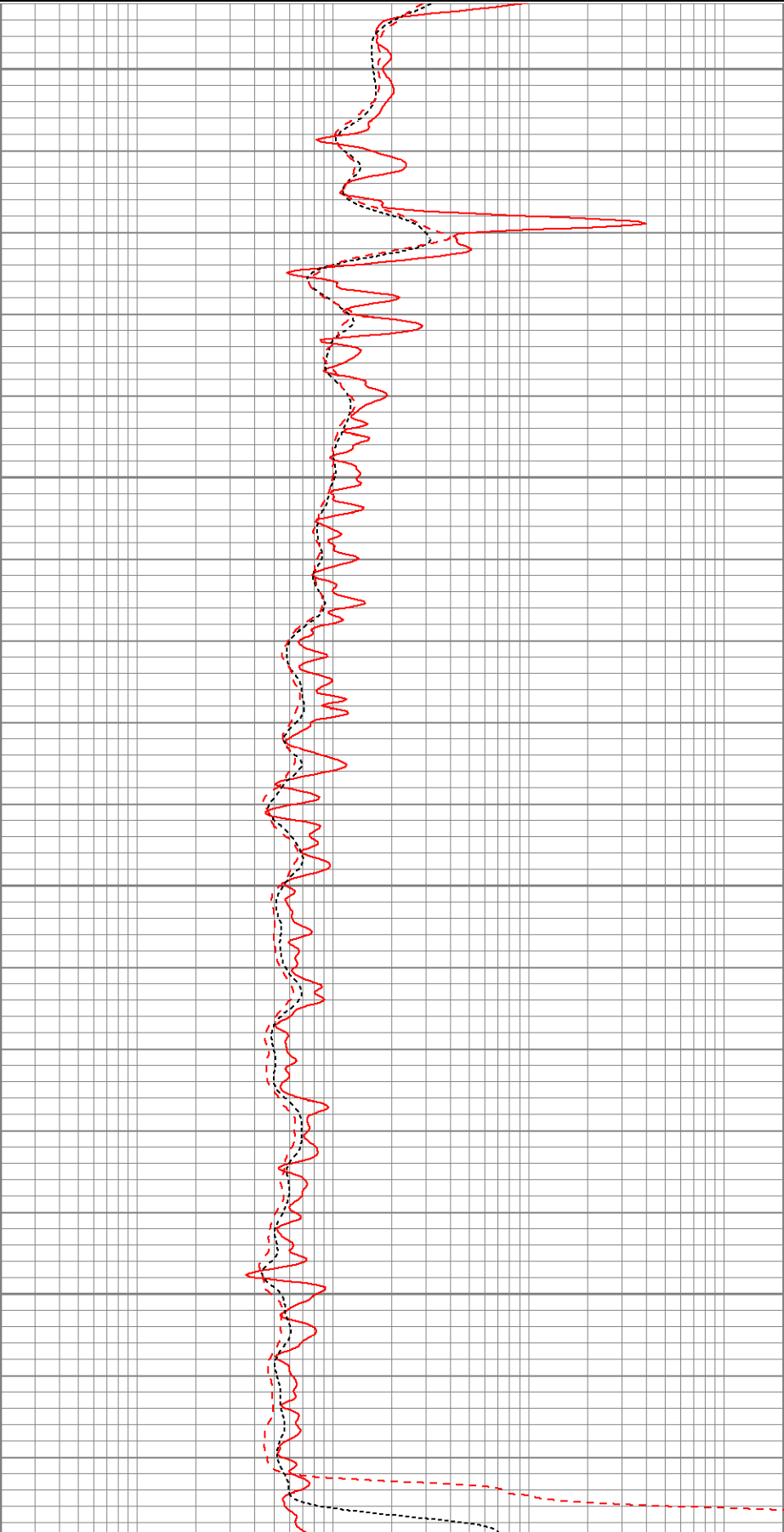


1950

2000

2050

2100



0	GR (GAPI)	200	0.2	RILM (Ohm-m)	2000
-200	SP (mV)	0	0.2	RILD (Ohm-m)	2000
0	GR-repeat (GAPI)	200	0.2	RLL3 (Ohm-m)	2000
-200	SP-repeat (mV)	0	0.2	RLL3-repeat (Ohm-m)	2000
			0.2	RILM-repeat (Ohm-m)	2000
			0.2	RILD-repeat (Ohm-m)	2000

Calibration Report	
Database File:	xtoge3303.db
Dataset Pathname:	pass1
Dataset Creation:	Mon Jul 07 18:29:23 2008 by Log Open-Cased 070814

Dual Induction Calibration Report	
Serial-Model:	20017-P
Surface Cal Performed:	Mon Jul 07 18:03:18 2008
Downhole Cal Performed:	Mon Jul 07 18:03:22 2008

Surface Calibration								
Loop:	Readings			References			Results	
	Air	Loop		Air	Loop		m	b
Deep	0.013	0.673	V	0.000	500.000	mmho-m	758.245	-10.209
Medium	-0.009	0.777	V	0.000	550.000	mmho-m	699.139	6.426
Internal:	Zero	Cal		Zero	Cal		m	b
Deep	0.014	0.674	V	0.000	500.000	mmho-m	758.497	-10.898
Medium	-0.010	0.778	V	0.000	500.000	mmho-m	634.960	6.127

Downhole Calibration								
Internal:	Readings			References			Results	
	Zero	Cal		Zero	Cal		m	b
Deep	0.245	500.171	mmho-m	0.685	500.518	mmho-m	1.000	0.440
Medium	-0.427	550.627	mmho-m	-0.320	550.218	mmho-m	0.999	0.106
Shallow	0.047	5.403	V	10.000	1000.000	Ohm-m	124.000	2.000

Temperature Calibration Report	
--------------------------------	--

Serial Number:	2542T			
Tool Model:	CDLP			
Performed:	Fri Jun 27 10:52:07 2008			
	Reference		Reading	
Low Reference:	55.00	degF	3.11	V
High Reference:	160.00	degF	5.35	V
Gain:	46.88			
Offset:	-90.78			
Delta Spacing	1			

Compensated Density Calibration Report	
--	--

Serial-Model:	2542-T2
---------------	---------

Source / Verifier:
Master Calibration Performed:

/
Thu Jun 26 08:09:20 2008

Master Calibration

	Density			Far Detector	Near Detector	
Magnesium	1.710	g/cc		725.64	339.44	cps
Aluminum	2.590	g/cc		162.65	232.88	cps
Spine Angle = 75.86			Density/Spine Ratio = 0.571			
	Size			Reading		
Small Ring	8.00	in		1.33	V	
Large Ring	14.00	in		2.67	V	

Gamma Ray Calibration Report

Serial Number: 2001
Tool Model: OH
Performed: Mon Jul 07 18:02:27 2008

Calibrator Value: 1.0 GAPI

Background Reading: 0.0 cps
Calibrator Reading: 1.0 cps

Sensitivity: 0.2500 GAPI/cps




Neutron Calibration Report

Serial Number: 5108
Tool Model: PROBE
Performed: Thu Jun 26 12:08:49 2008

Calibrator Value: 1 NAPI

Calibrator Reading: 1 cps

Sensitivity: 1 NAPI/cps

Sensor	Offset (ft)	Schematic	Description	Len (ft)	OD (in)	Wt (lb)
NEU	40.63		None	0.75	1.50	5.00
			NEU-PROBE (5108) Probe Epithermal	4.92	3.63	85.00
GR	35.10		GR-OH (2001) 2001	3.56	3.25	40.00
			CDL-T2 (2542) Gearhart	9.29	4.00	201.00
LSD	26.35		TEMP-CDLP (2542T) Probe Density/Temp	0.01	1.00	1.00
DCAL	26.14					
SSD	25.89					
TEMP	25.71					

CILD SP	16.29 16.29		24.63	4.00	300.00
CILM	12.54				
RLL3	3.21				
Dataset: xtoge3303.db: field/well/run1/pass1 Total Length: 43.16 ft Total Weight: 632.00 lb O.D. 4.00 in					