



SUPERIOR
Black Lick, Pa.
Mercer, Pa.
Wooster, Oh.
Cleveland, Ok.
Trinidad, Co.

DUAL INDUCTION LOG

Company XTO Energy Inc.
Well Golden Eagle 33-04
Field Purgatoire River
County Las Animas State Colorado

Location: API # : 05 071 09507 00

1319' FNL & 465' FWL

SEC 33 TWP 33S RGE 67W

Permanent Datum Ground Level Elevation 7491'
Log Measured From Ground Level
Drilling Measured From Ground Level

Other Services
cdl
neu
Elevation
K.B. -----
D.F. -----
G.L. 7491'

Date	7-3-08		
Run Number	One		
Depth Driller	2150'		
Depth Logger	2151'		
Bottom Logged Interval	2149'		
Top Log Interval	Surface Casing		
Casing Driller	8 5/8" @ 492"		
Casing Logger	493'		
Bit Size	7 7/8"		
Type Fluid in Hole	Water		
Density / Viscosity	///		
pH / Fluid Loss	///		
Source of Sample	///		
Rm @ Meas. Temp	///		
Rmf @ Meas. Temp	///		
Rmc @ Meas. Temp	///		
Source of Rmf / Rmc	///		
Rm @ BHT	///		
Time Circulation Stopped	8:00 A.M.		
Time Logger on Bottom	11:30 A.M.		
Maximum Recorded Temperature	124 DEG F		
Equipment Number	T0701		
Location	Trinidad		
Recorded By	C. Sisneros		
Witnessed By	Mr. Don Johnson		

<<< Fold Here >>>

All interpretations are opinions based on inferences from electrical or other measurements and we cannot and do not guarantee the accuracy or correctness of any interpretation, and we shall not, except in the case of gross or willful negligence on our part, be liable or responsible for any loss, costs, damages, or expenses incurred or sustained by anyone resulting from any interpretation made by any of our officers, agents or employees. These interpretations are also subject to our general terms and conditions set out in our current Price Schedule.

Comments

Well Directions:
Highway 12 past Weston, turn left across from electric substation on right,
go thru gate, immediate right, drive past Compressor #3, first left,
take right on GE 33-03, dead end on location.



SUPERIOR

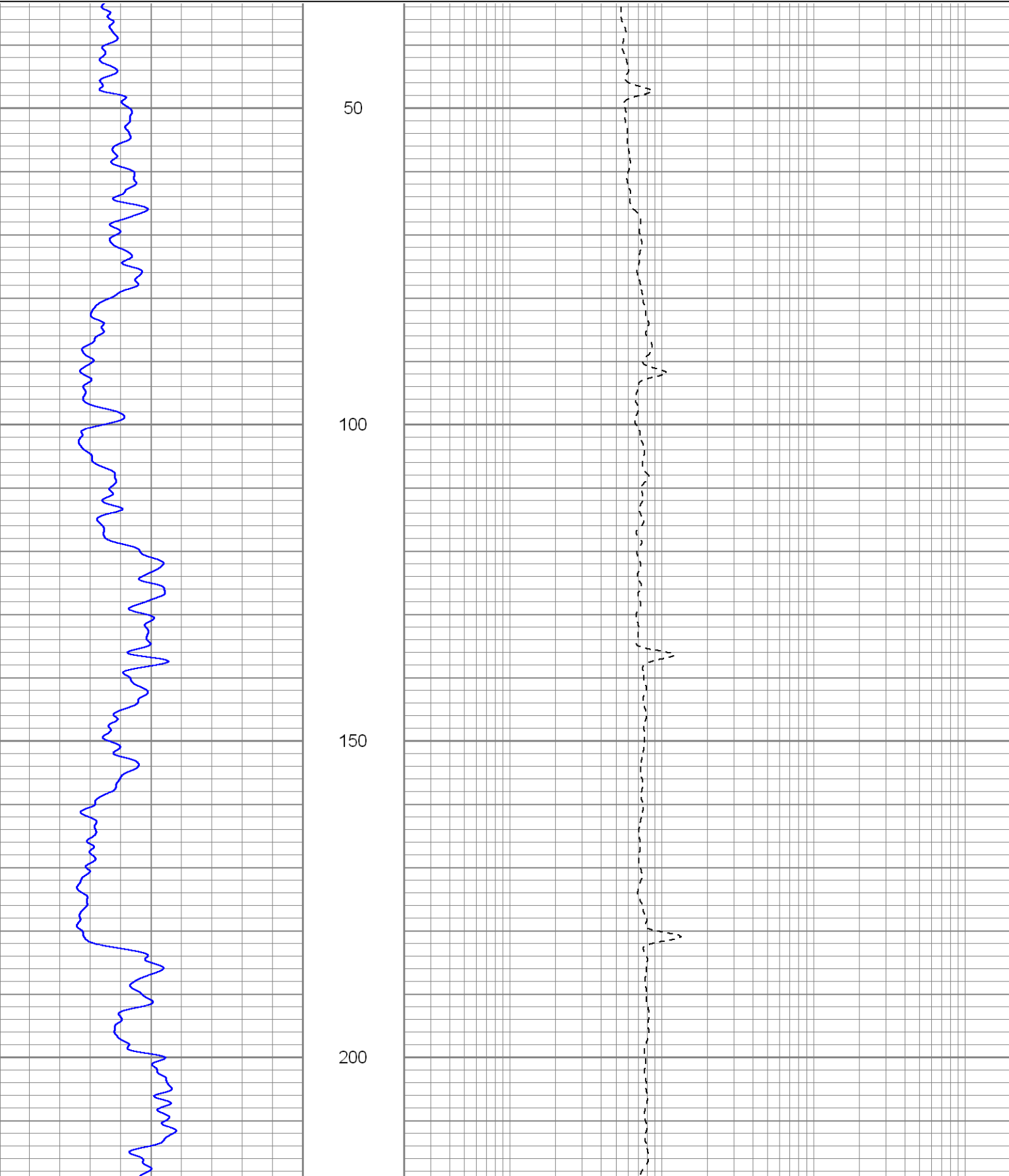
Black Lick, Pa.
Mercer, Pa.
Wooster, Oh.
Cleveland, Ok.
Trinidad, Co.

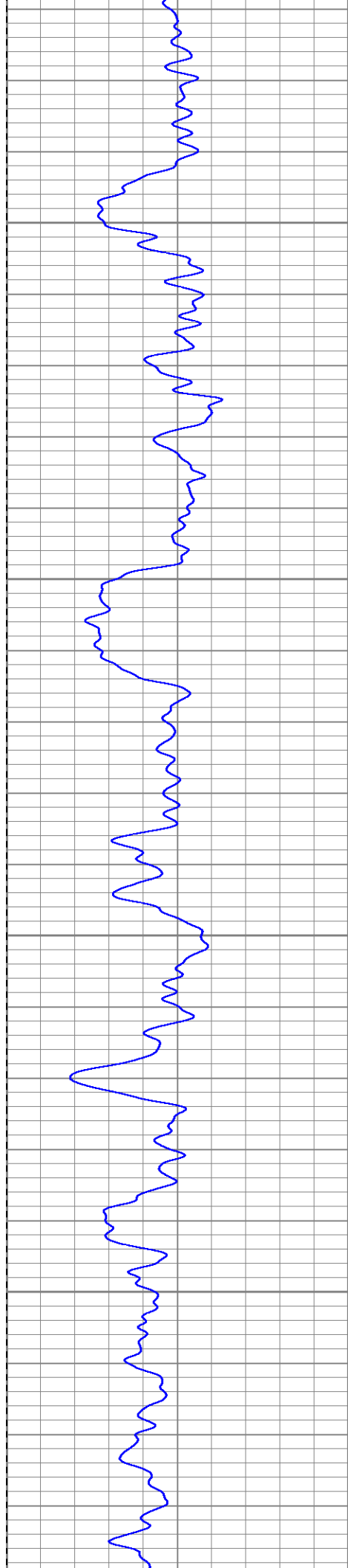
Main Pass

Database File: xtoge3304.db
Dataset Pathname: pass2.1
Presentation Format: dil
Dataset Creation: Thu Jul 03 13:00:11 2008 by Calc Open-Cased 070814
Charted by: Depth in Feet scaled 1:240

0	GR (GAPI)	200
-200	SP (mV)	0

0.2	RILD (Ohm-m)	2000
0.2	RILM (Ohm-m)	2000
0.2	RLL3 (Ohm-m)	2000



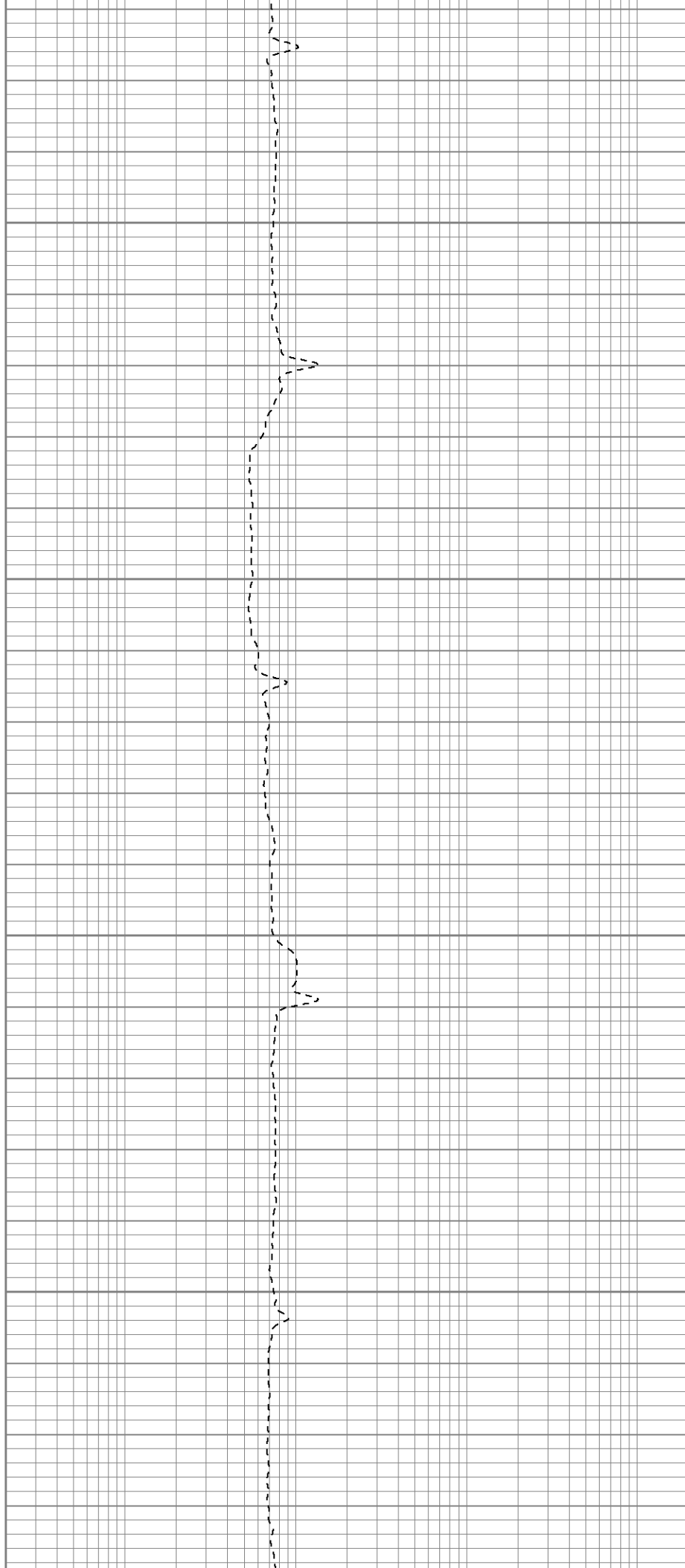


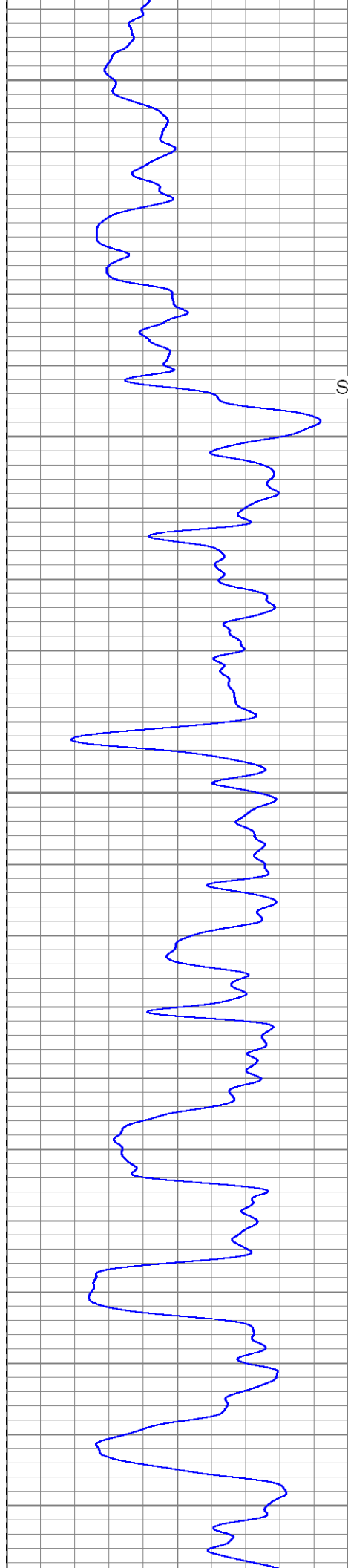
250

300

350

400





450

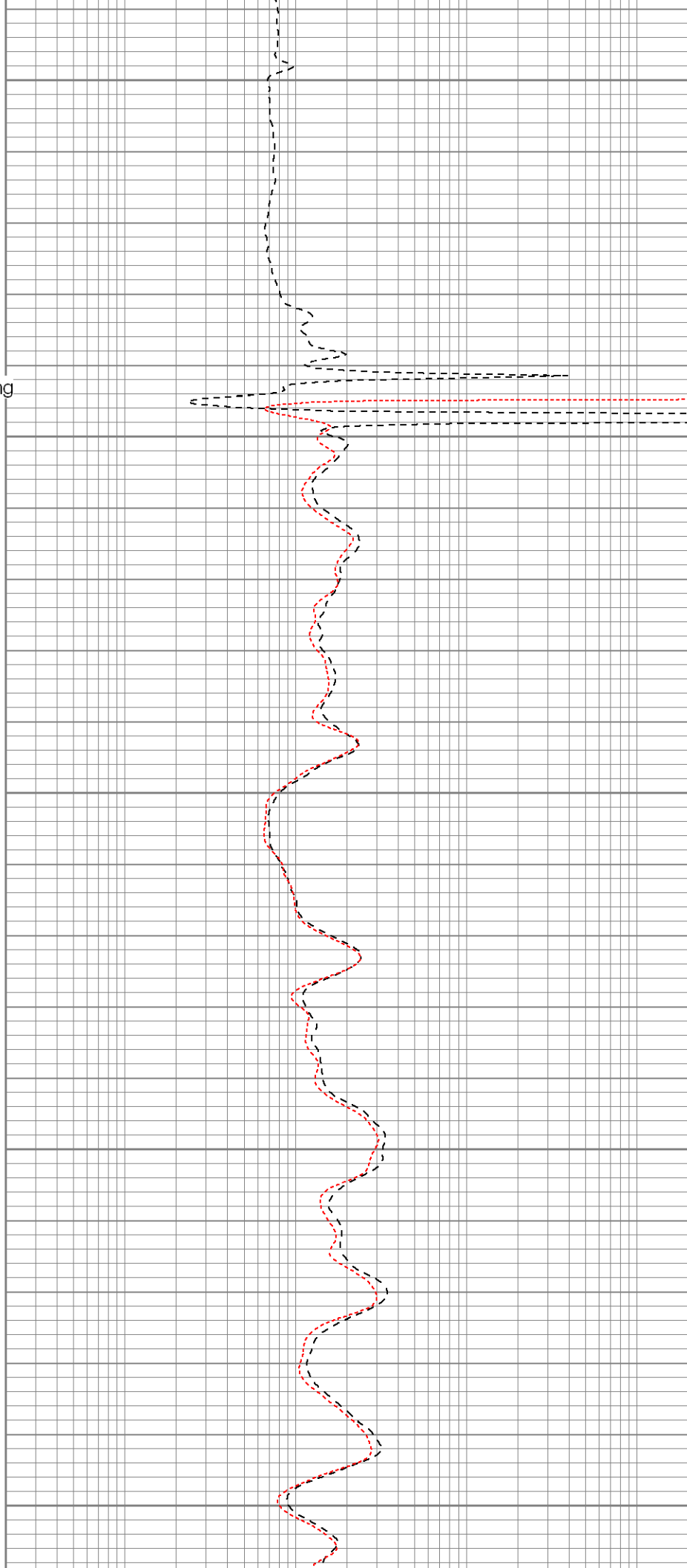
Surface Casing

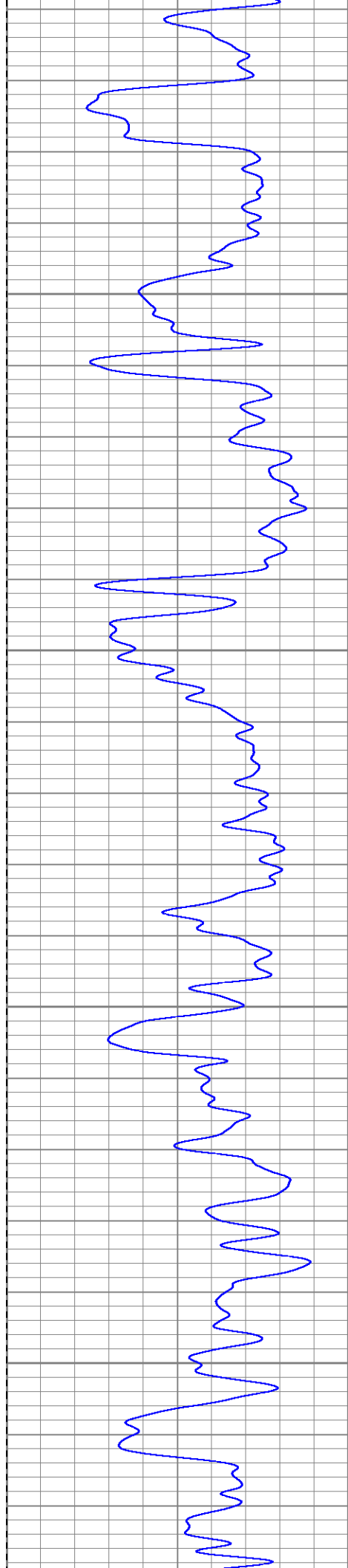
500

550

600

650



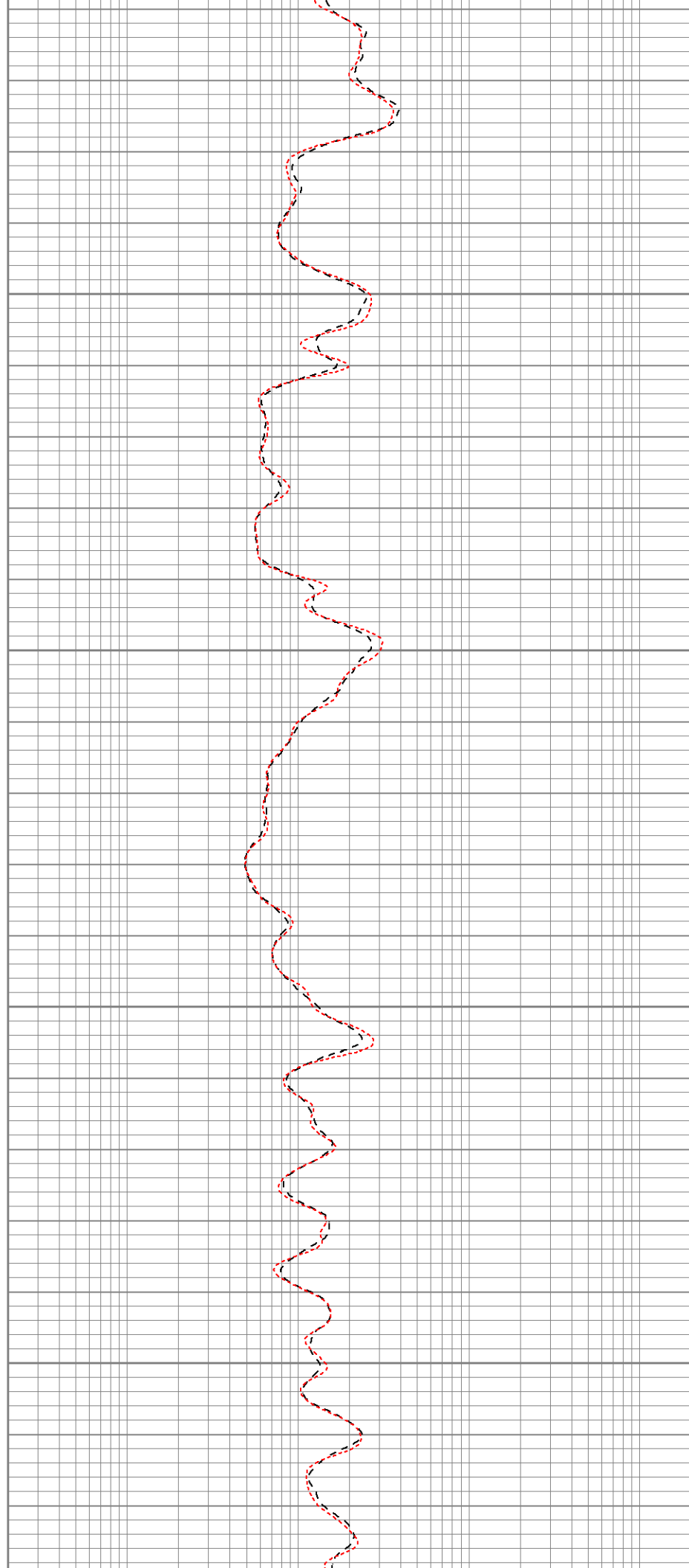


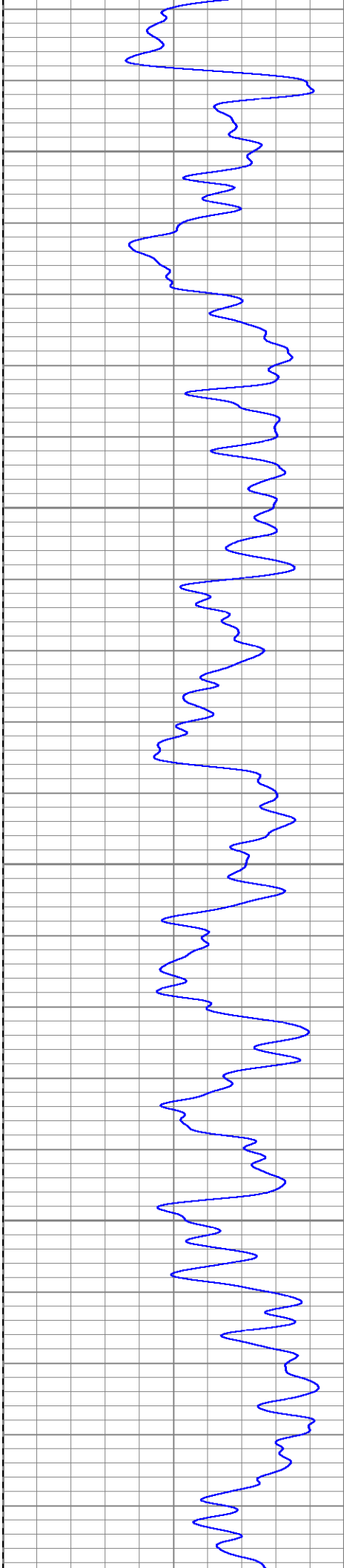
700

750

800

850



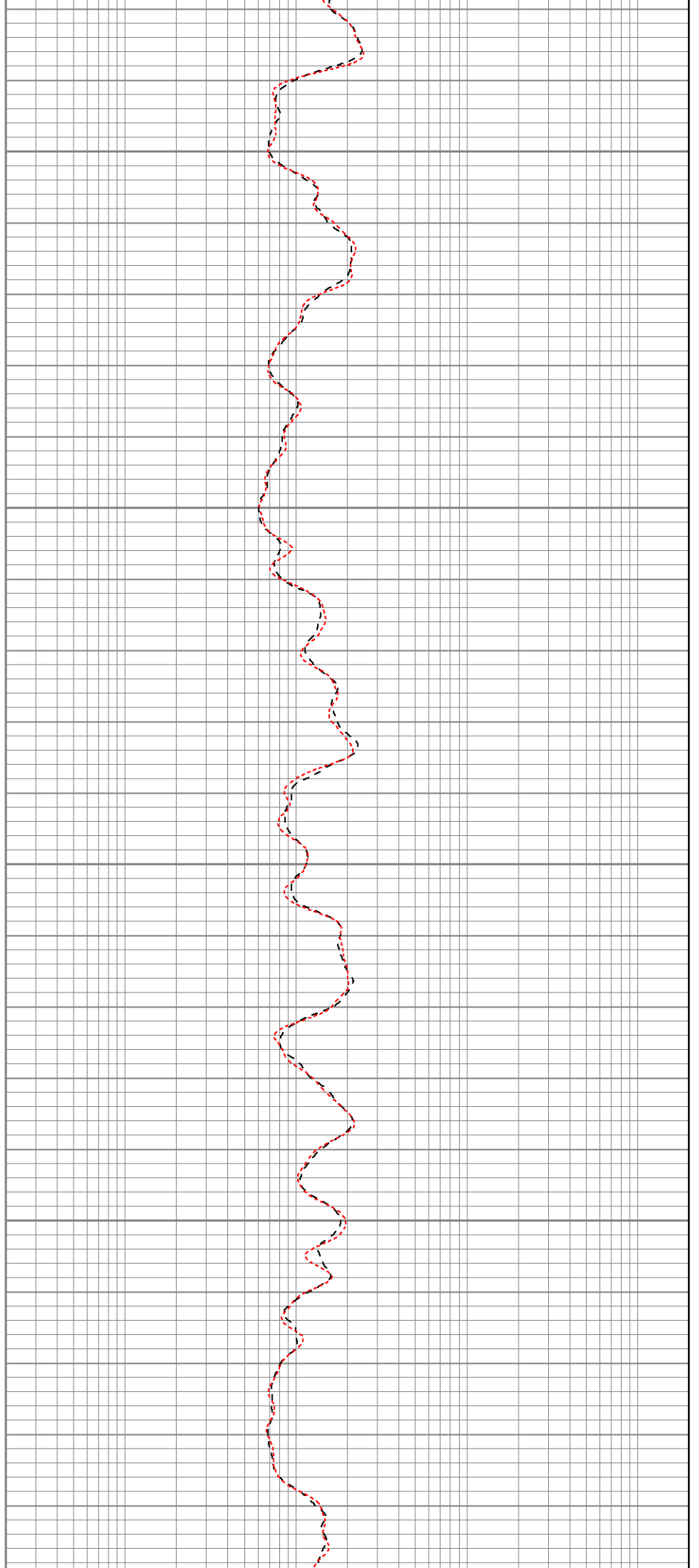


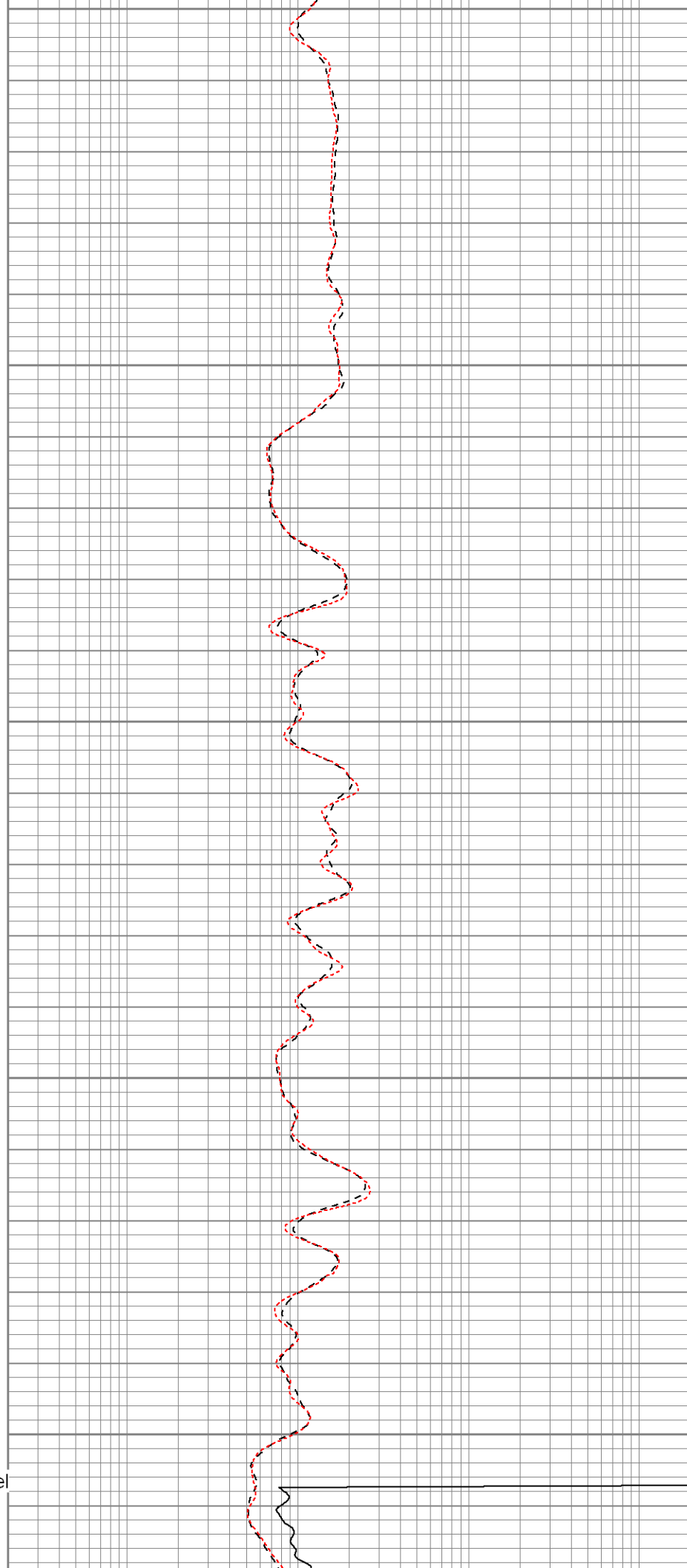
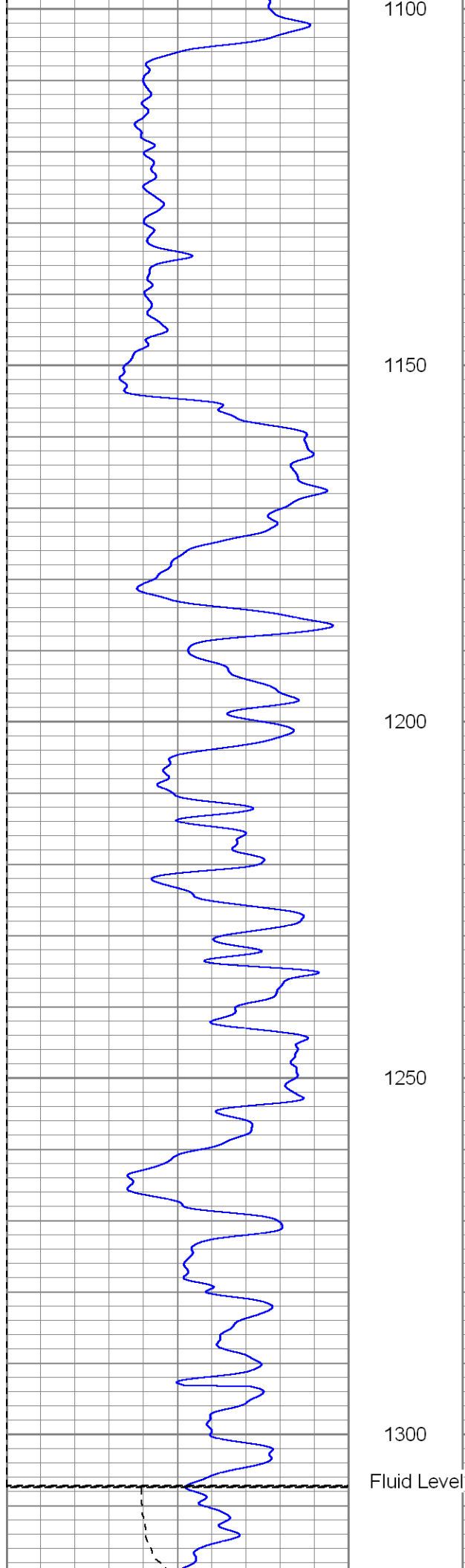
900

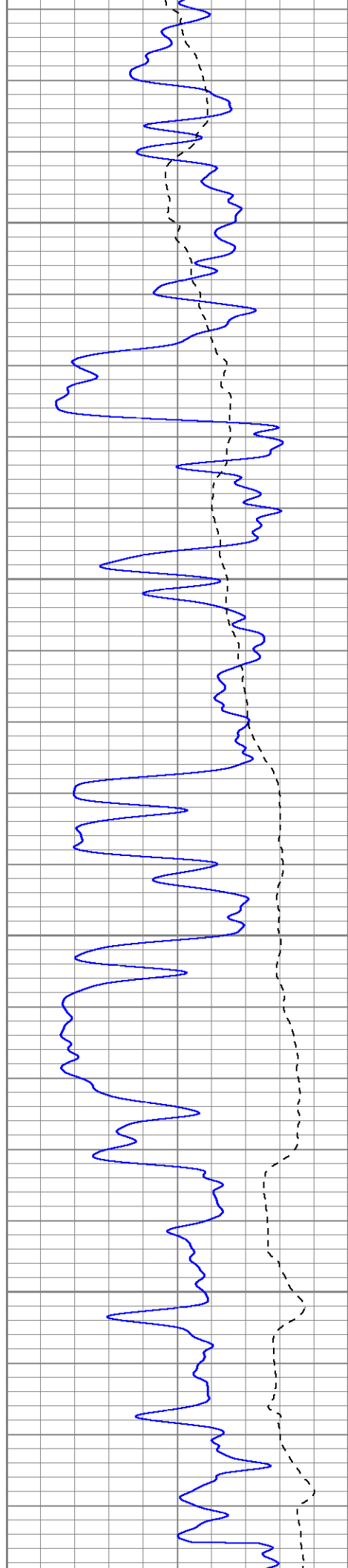
950

1000

1050





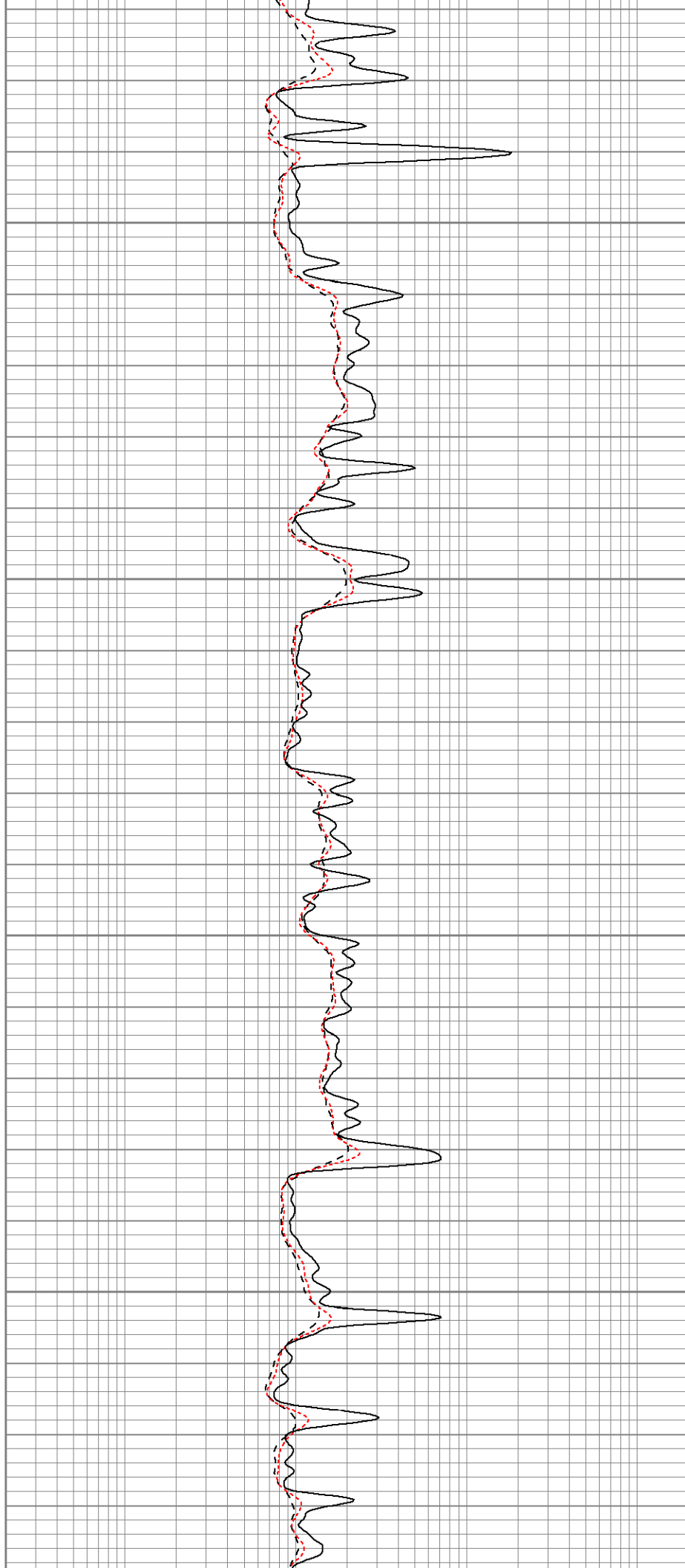


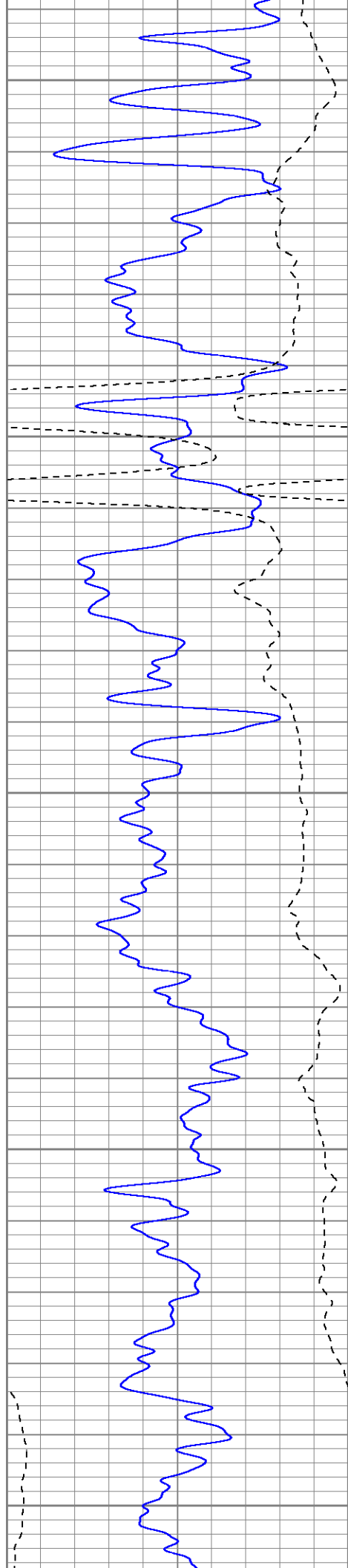
1350

1400

1450

1500





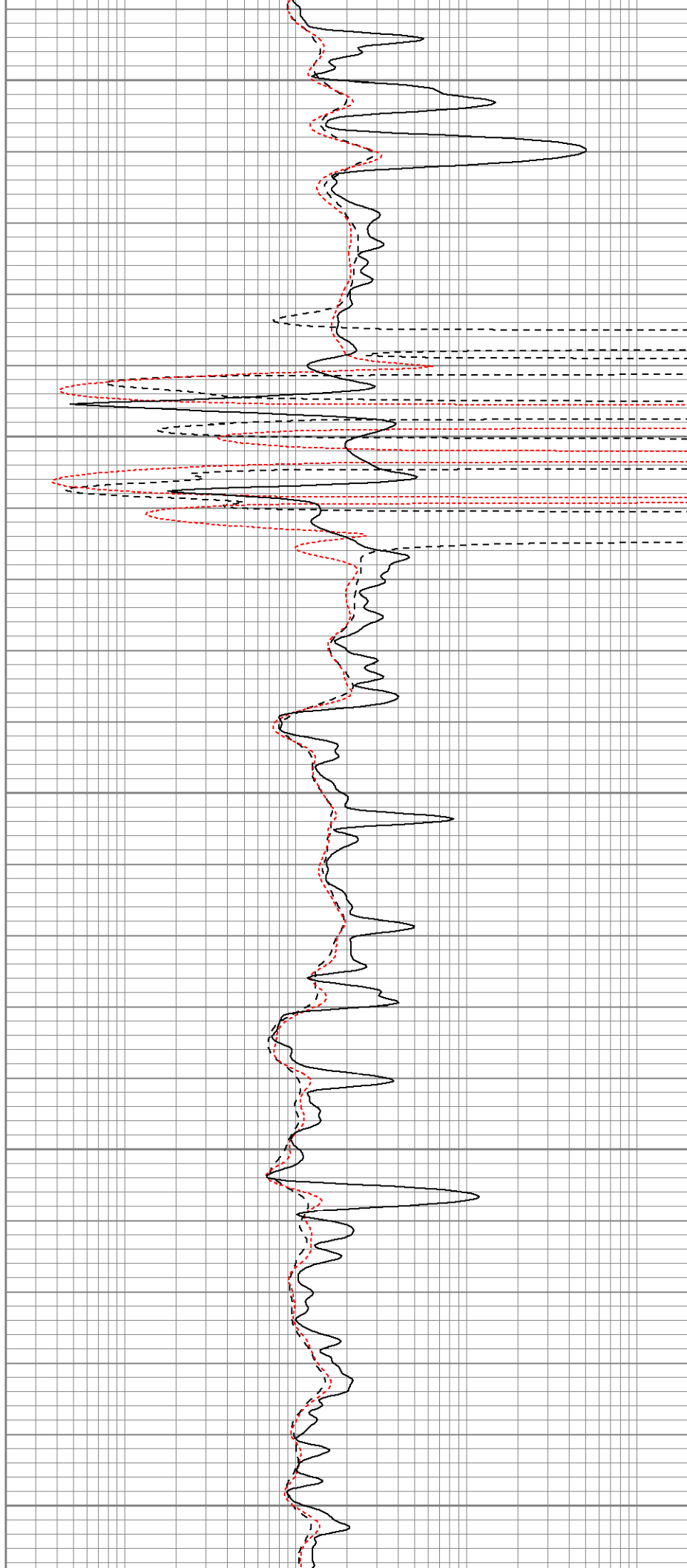
1550

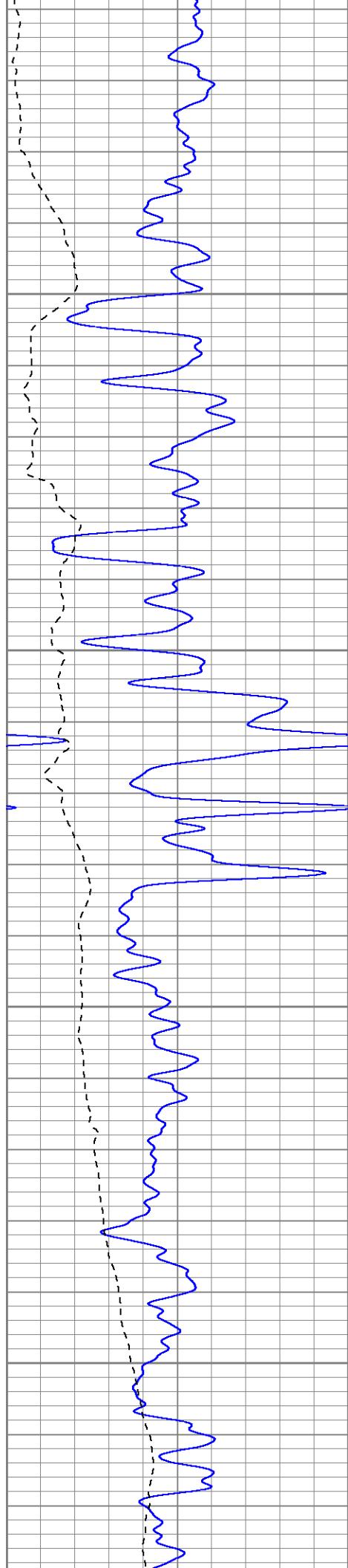
1600

1650

1700

1750



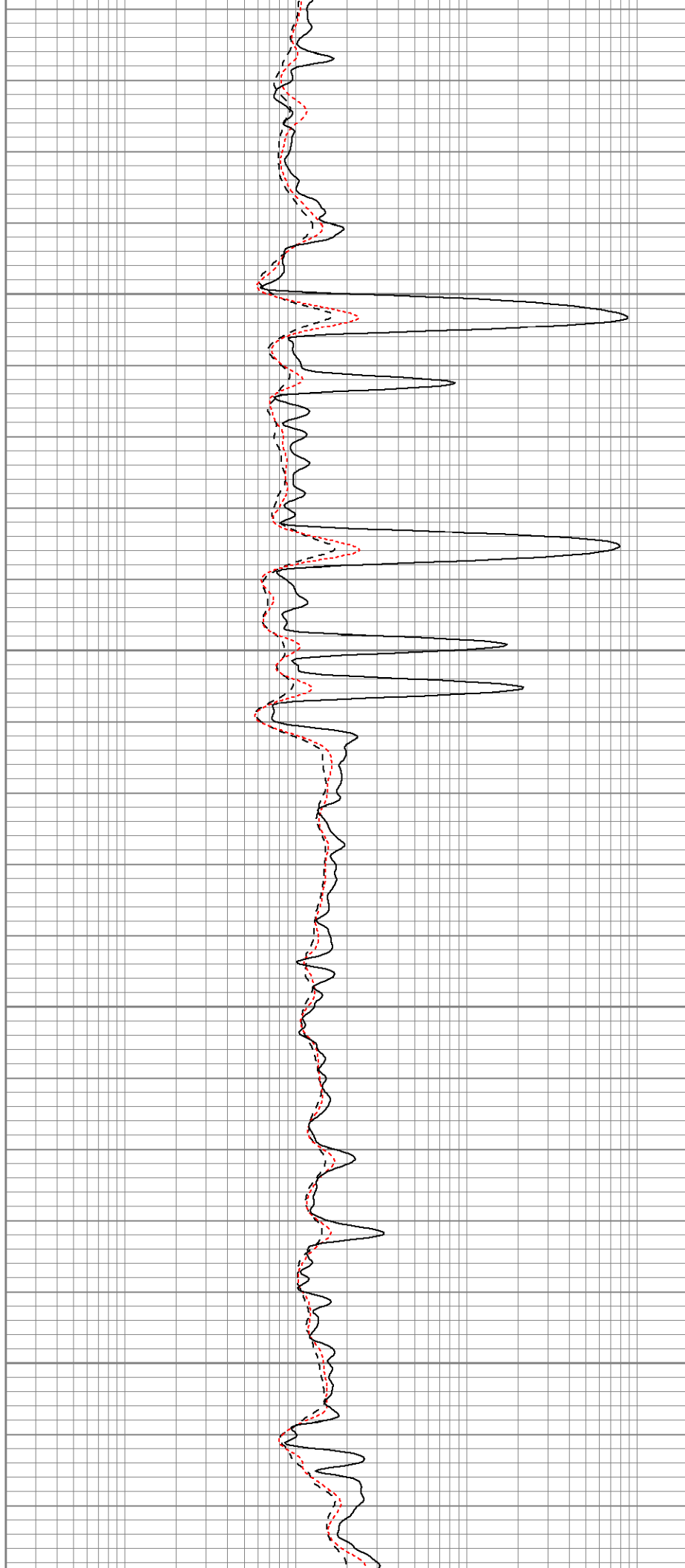


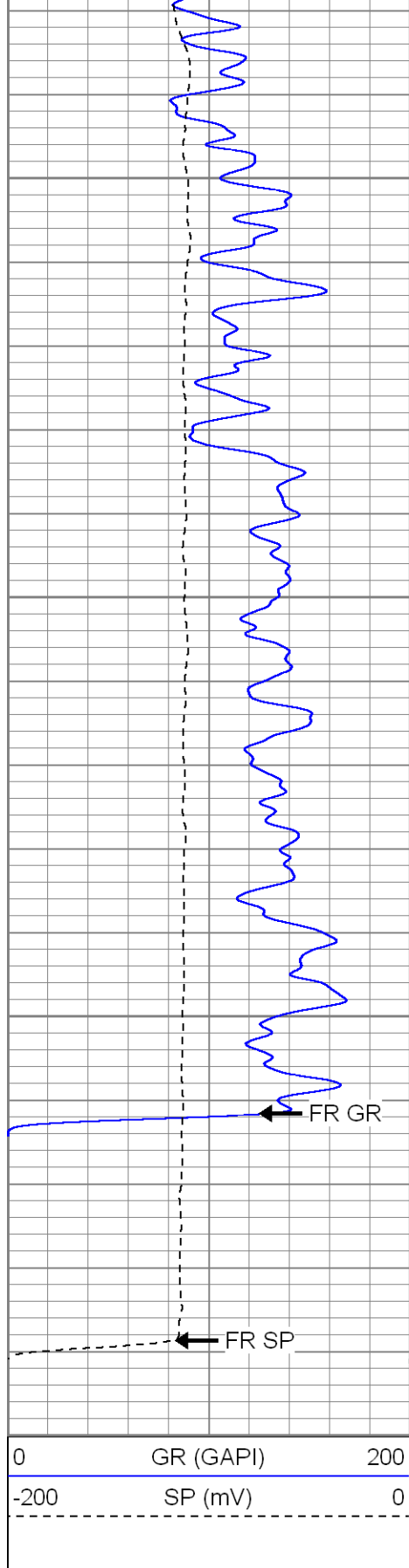
1800

1850

1900

1950



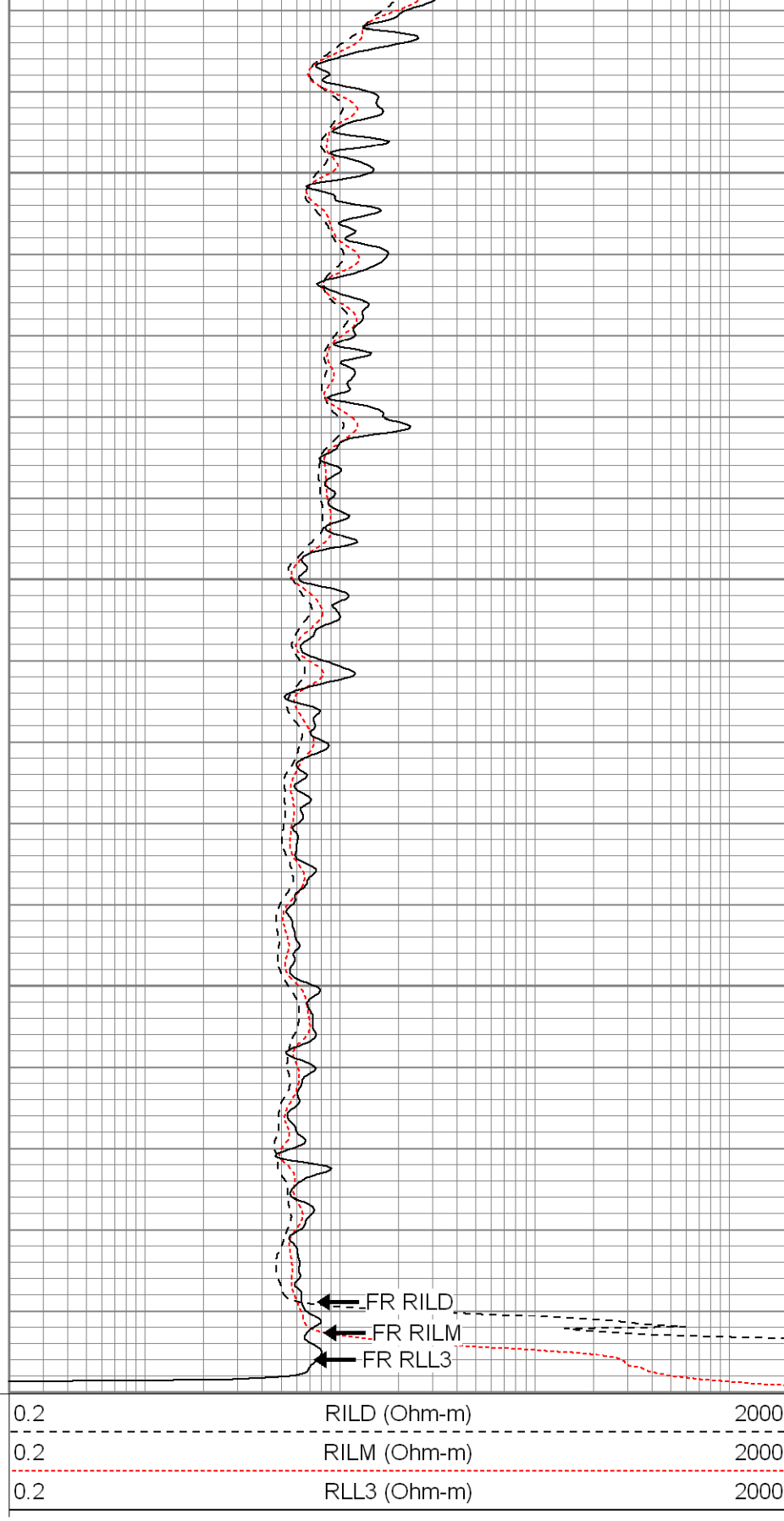


2000

2050

2100

2150



SUPERIOR

Black Lick, Pa.
Mercer, Pa.
Wooster, Oh.
Cleveland, Ok.
Trinidad, Co.

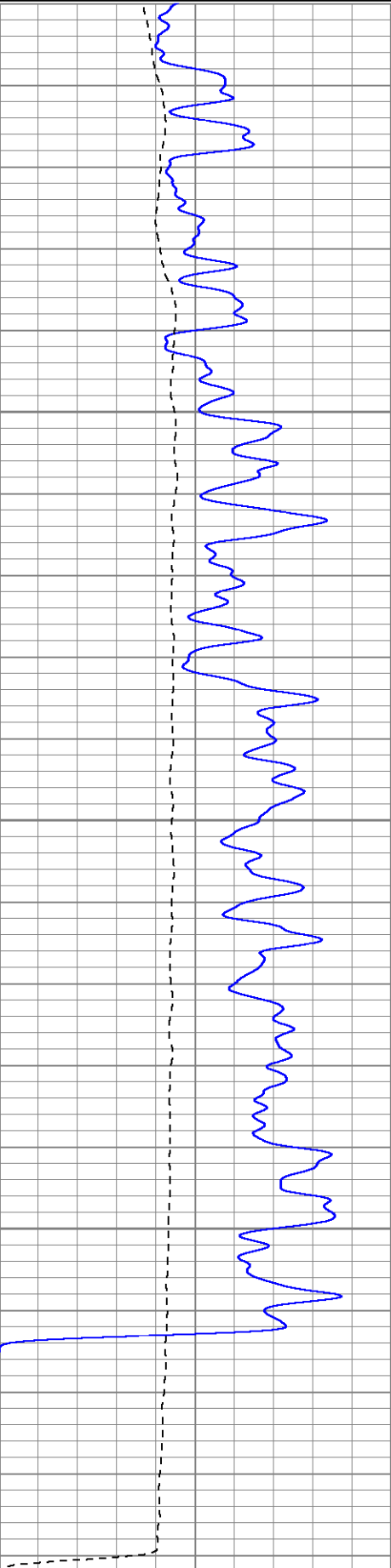
Repeat Pass

Database File: xtoge3304.db

Dataset Pathname: pass1.1

0	GR (GAPI)	200
-200	SP (mV)	0

0.2	RILD (Ohm-m)	2000
0.2	RILM (Ohm-m)	2000
0.2	RLL3 (Ohm-m)	2000

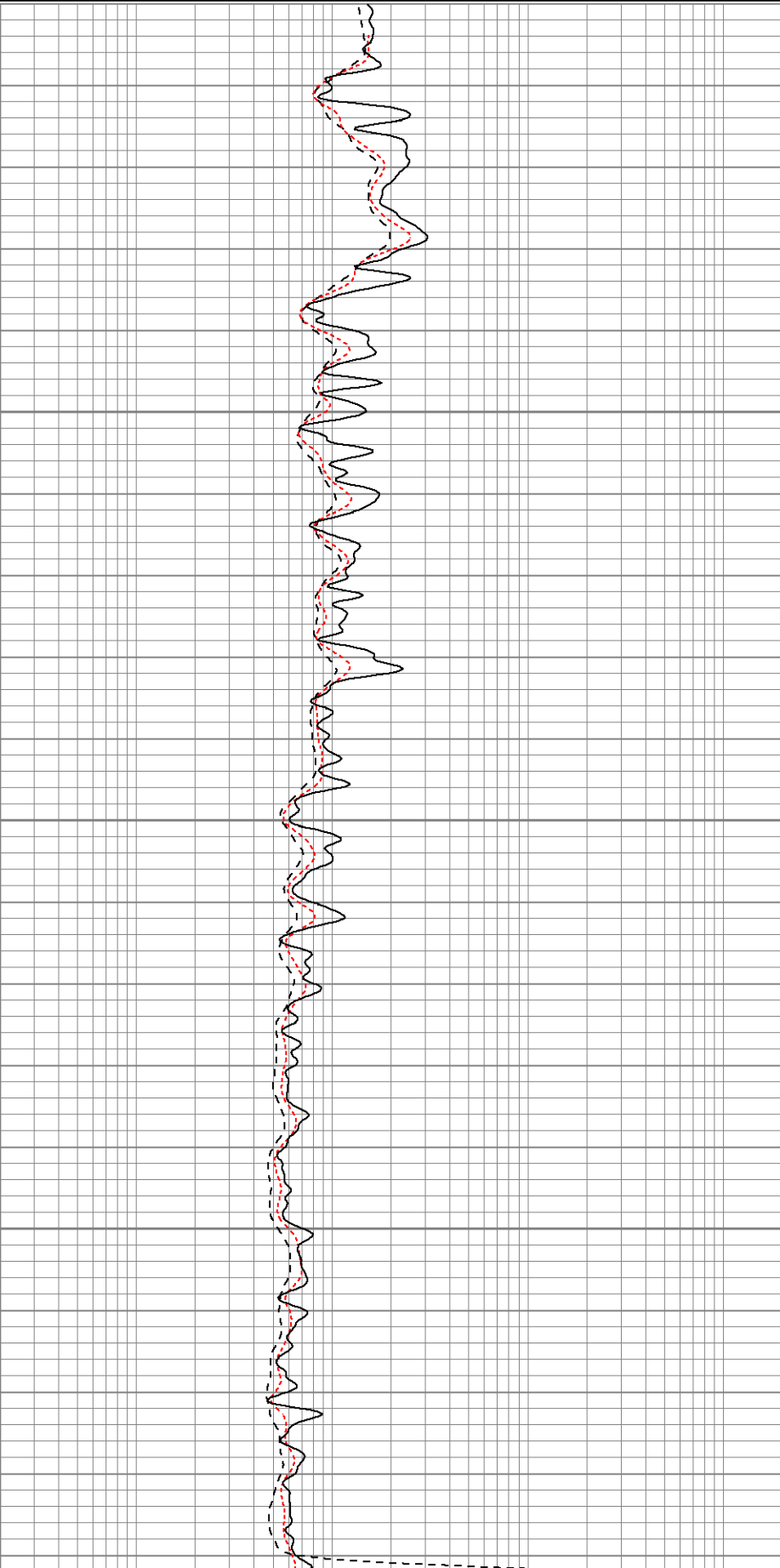


1950

2000

2050

2100



Neutron Calibration Report

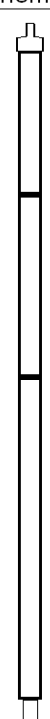
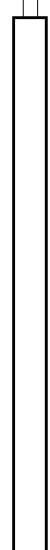

Serial Number: 803
 Tool Model: 2.75POH
 Performed: Fri Jun 13 12:44:22 2008

 Calibrator Value: 1 NAPI
 Calibrator Reading: 1 cps
 Sensitivity: 1 NAPI/cps

Gamma Ray Calibration Report

Serial Number: 804
 Tool Model: 2.75POH
 Performed: Fri Jun 13 13:37:58 2008

 Calibrator Value: 1.0 GAPI
 Background Reading: 0.0 cps
 Calibrator Reading: 1.0 cps
 Sensitivity: 0.8000 GAPI/cps

Sensor	Offset (ft)	Schematic	Description	Len (ft)	OD (in)	Wt (lb)	
GR	37.81		None	0.75	1.50	5.00	
			GR-2.75POH (804) Probe	3.73	2.75	43.00	
NEU	32.27		NEU-2.75POH (803) Probe Epithermal	4.75	2.75	58.00	
			CDL-2.75POH (901) Probe	8.43	2.75	106.00	
LSD	24.44			Probe	0.89	3.50	20.00
DCAL	24.16						
SSD	23.91						
CILD	10.60		DIL-G (5375) Gearhart	20.80	4.00	345.00	
SP	10.60						
CILM	6.89						

