



**SUPERIOR**  
Black Lick, Pa.  
Mercer, Pa.  
Wooster, Oh.  
Cleveland, Ok.  
Trinidad, Co.

## DUAL INDUCTION LOG

Company XTO Energy Inc.  
Well New Elk 25-14  
Field Purgatoire River  
County Las Animas State Colorado

Location: API # : 05 071 09537 00

803' FSL & 2322' FWL

SEC 25 TWP 33S RGE 68W

Other Services  
CDL  
NEUTRON

Elevation

Permanent Datum Ground Level Elevation 7468'  
Log Measured From Ground Level  
Drilling Measured From Ground Level

K.B. -----  
D.F. -----  
G.L. 7468'

Date 6-12-08

Run Number One

Depth Driller 1900'

Depth Logger 1905'

Bottom Logged Interval 1903'

Top Log Interval Surface Casing

Casing Driller 8 5/8" @ 489'

Casing Logger 489'

Bit Size 7 7/8"

Type Fluid in Hole Water

Density / Viscosity ///

pH / Fluid Loss ///

Source of Sample ///

Rm @ Meas. Temp ///

Rmf @ Meas. Temp ///

Rmc @ Meas. Temp ///

Source of Rmf / Rmc ///

Rm @ BHT ///

Time Circulation Stopped 9:00 A.M.

Time Logger on Bottom 11:42 A.M.

Maximum Recorded Temperature DEG F

Equipment Number T697

Location Trinidad

Recorded By J. Cappellucci

Witnessed By Mr. Don Johnson

<<< Fold Here >>>

All interpretations are opinions based on inferences from electrical or other measurements and we cannot and do not guarantee the accuracy or correctness of any interpretation, and we shall not, except in the case of gross or willful negligence on our part, be liable or responsible for any loss, costs, damages, or expenses incurred or sustained by anyone resulting from any interpretation made by any of our officers, agents or employees. These interpretations are also subject to our general terms and conditions set out in our current Price Schedule.

### Comments

#### Well Directions:

Second Bosque Entrance, straight across railroad tracks, at Y stay right to Apache canyon, follow Main road thru 2 locations, at Y at 2 green gates, stay left, thru green gate, end on second drive thru location.



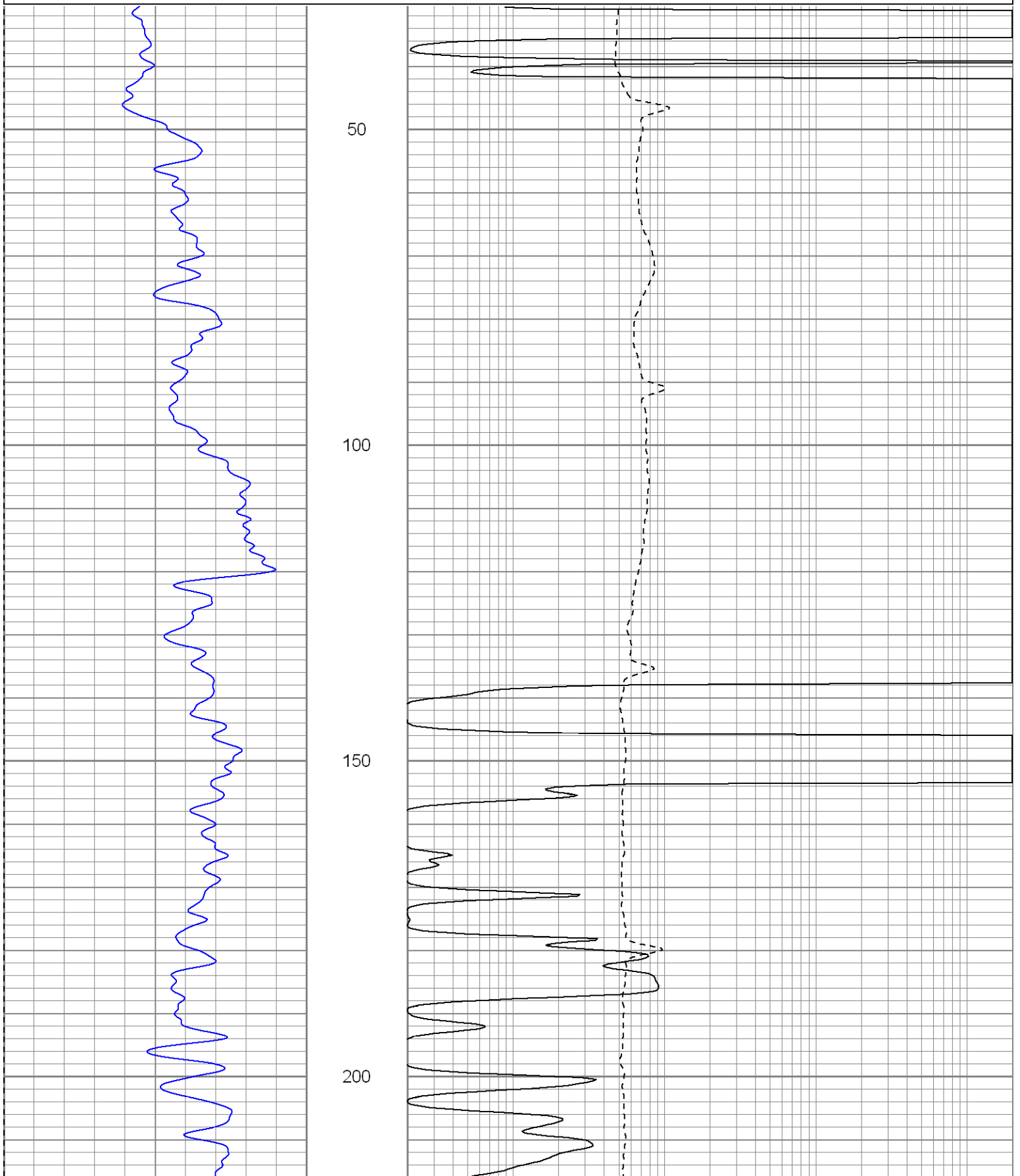
**SUPERIOR**  
Black Lick, Pa.  
Mercer, Pa.  
Wooster, Oh.  
Cleveland, Ok.  
Trinidad, Co.

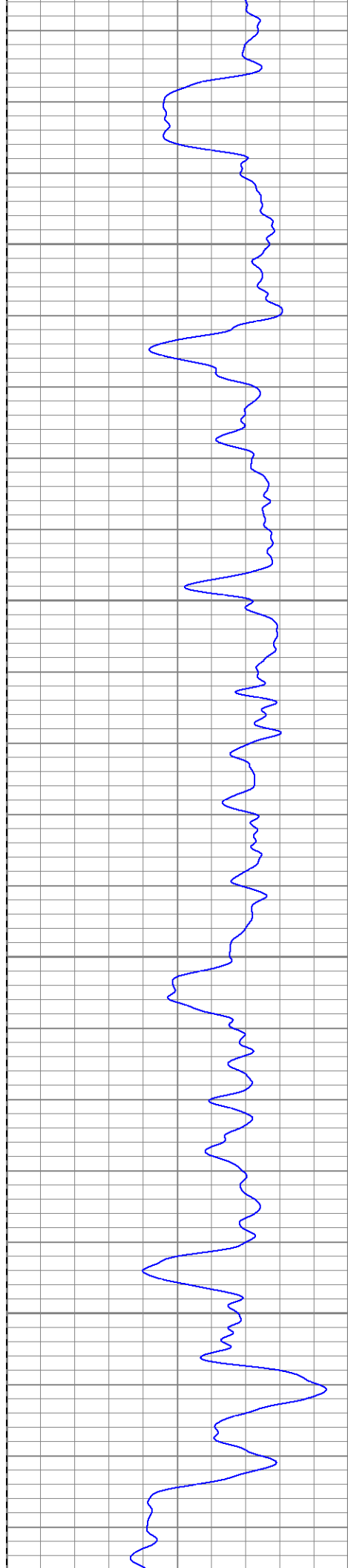
# Main Pass

Database File: xtone2514.db  
Dataset Pathname: pass3.1  
Presentation Format: dil  
Dataset Creation: Thu Jun 12 13:31:55 2008 by Calc Open-Cased 070814  
Charted by: Depth in Feet scaled 1:240

0	GR (GAPI)	200
-200	SP (mV)	0

0.2	RILM (Ohm-m)	2000
0.2	RILD (Ohm-m)	2000
0.2	RLL3 (Ohm-m)	2000



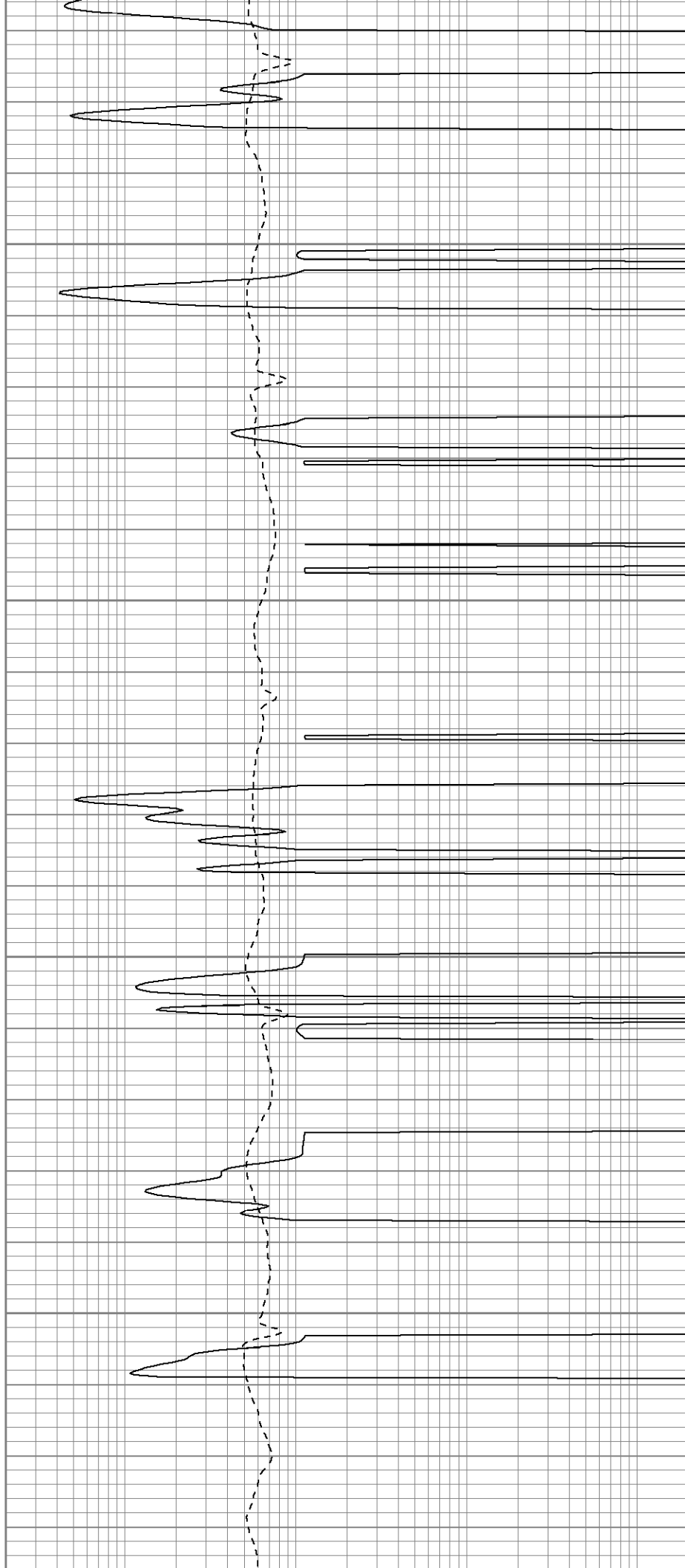


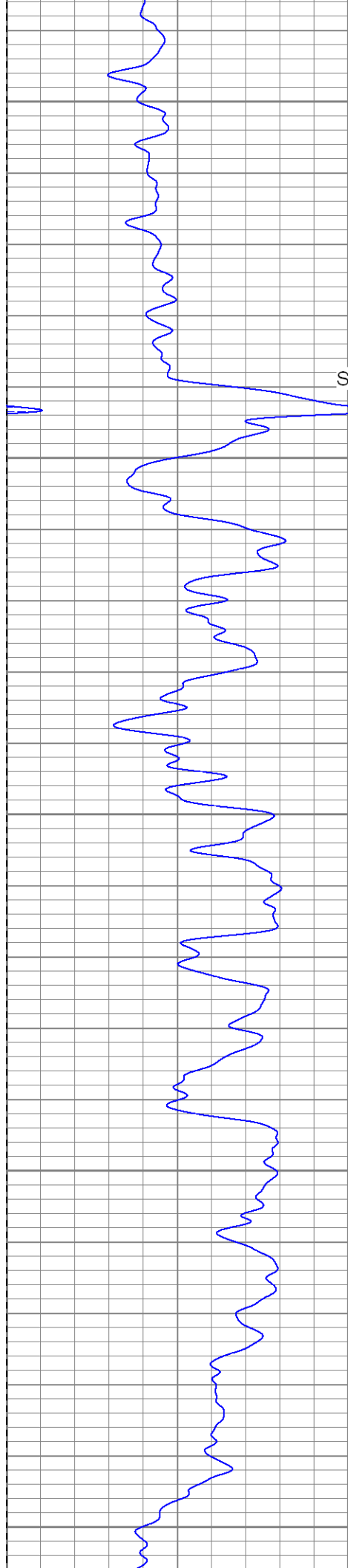
250

300

350

400





450

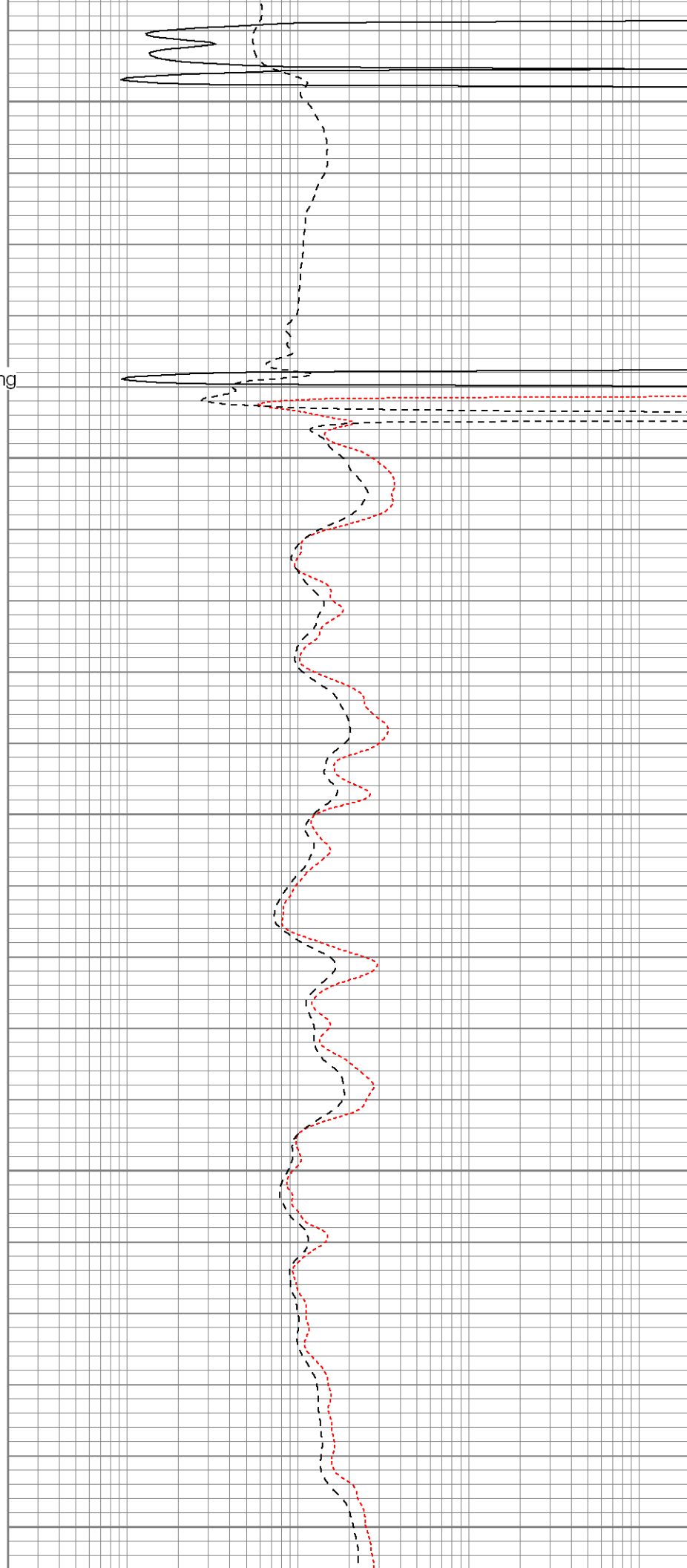
Surface Casing

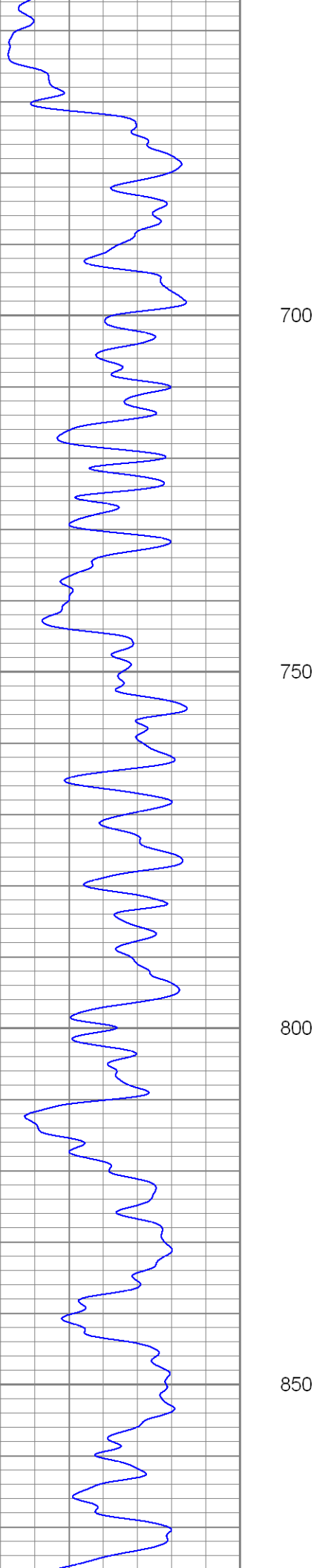
500

550

600

650



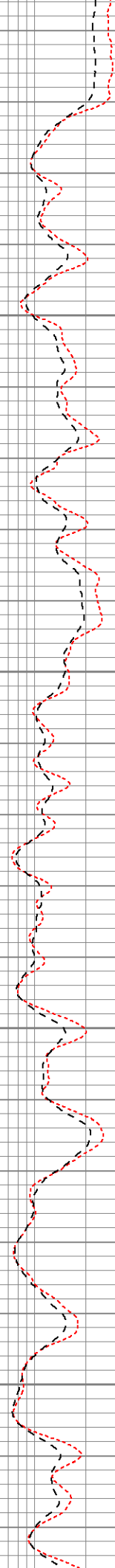


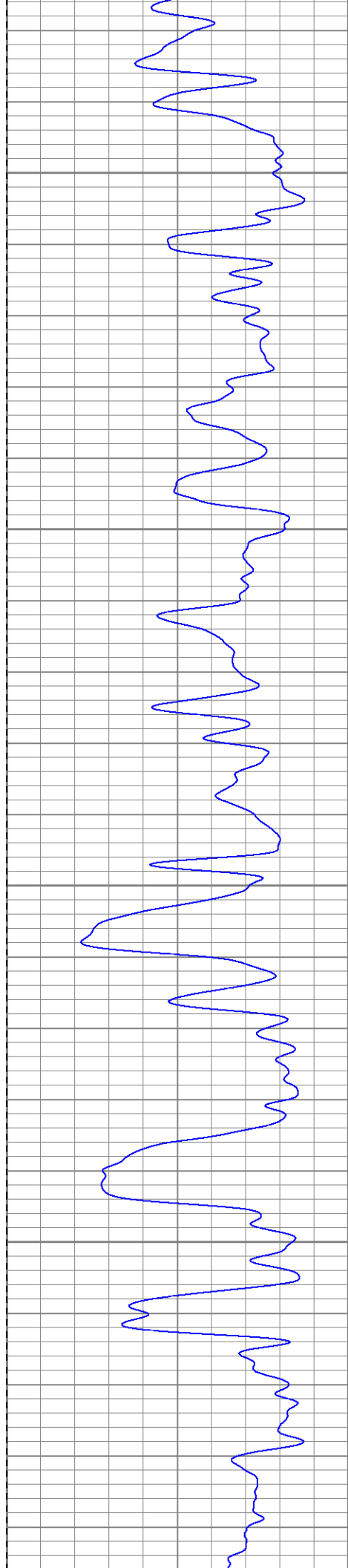
700

750

800

850



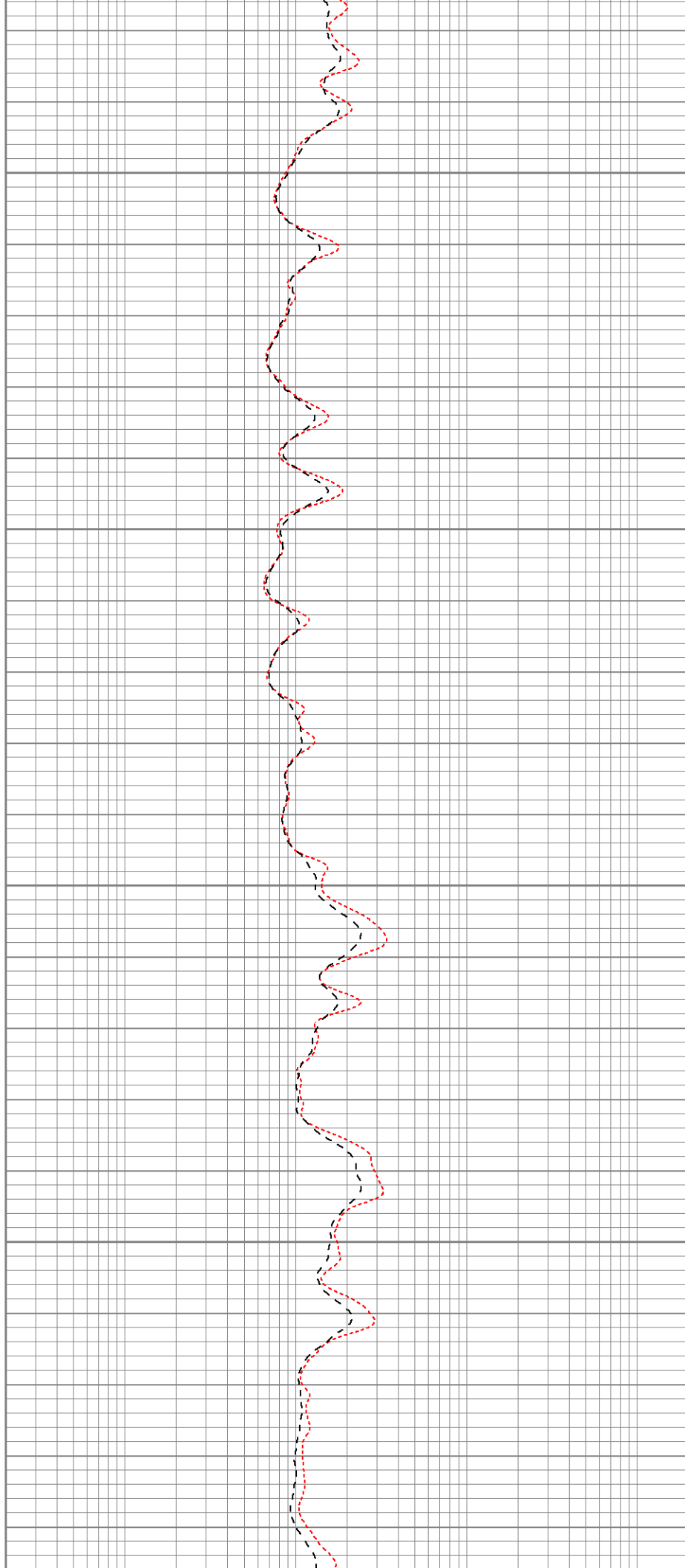


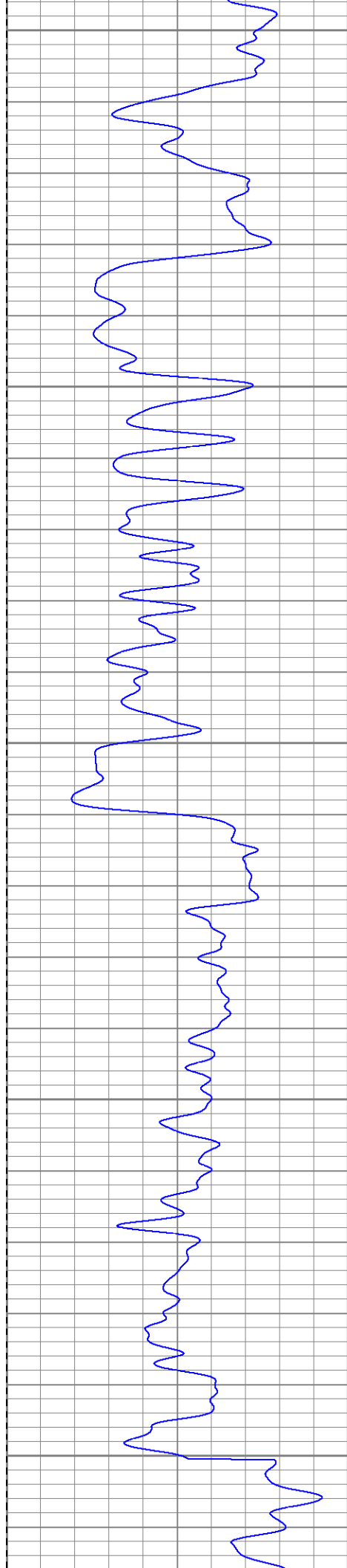
900

950

1000

1050





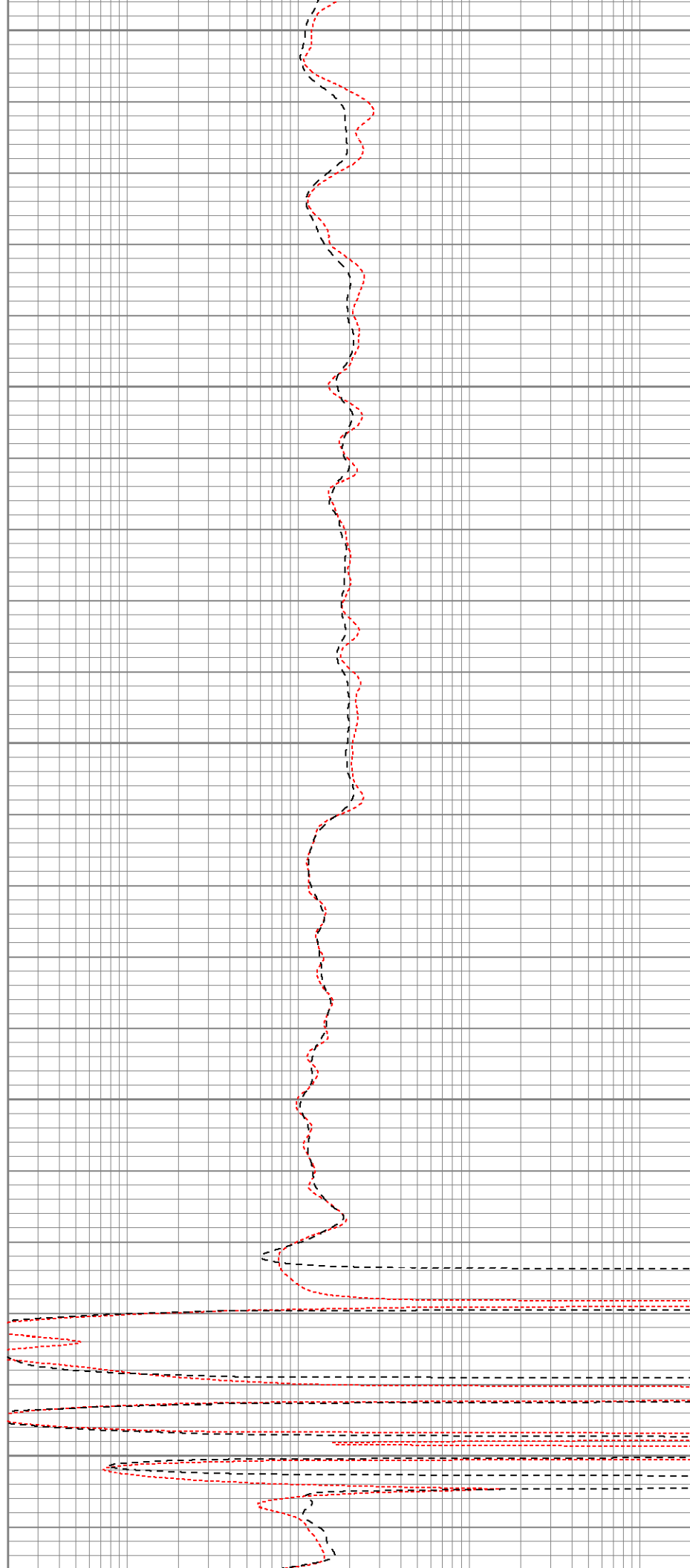
1100

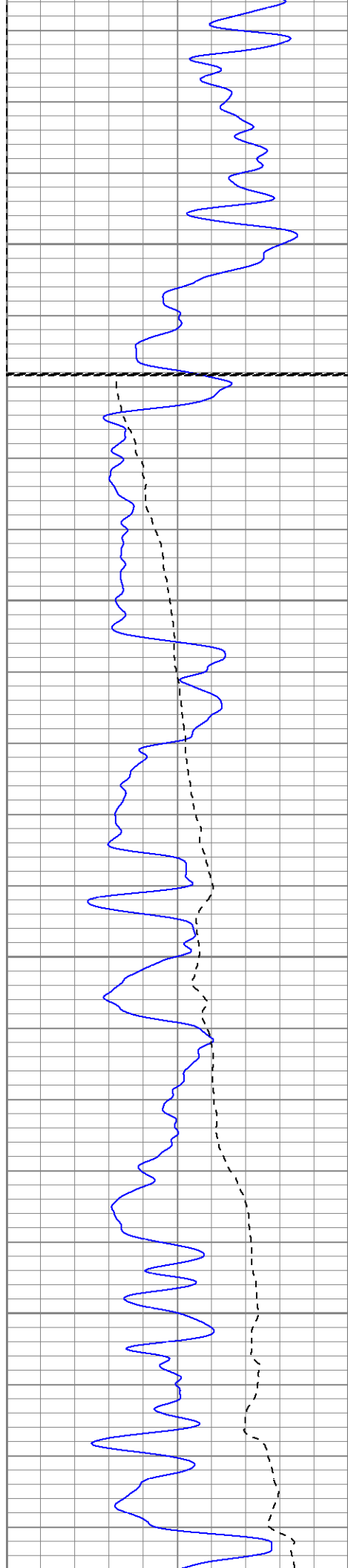
1150

1200

1250

1300





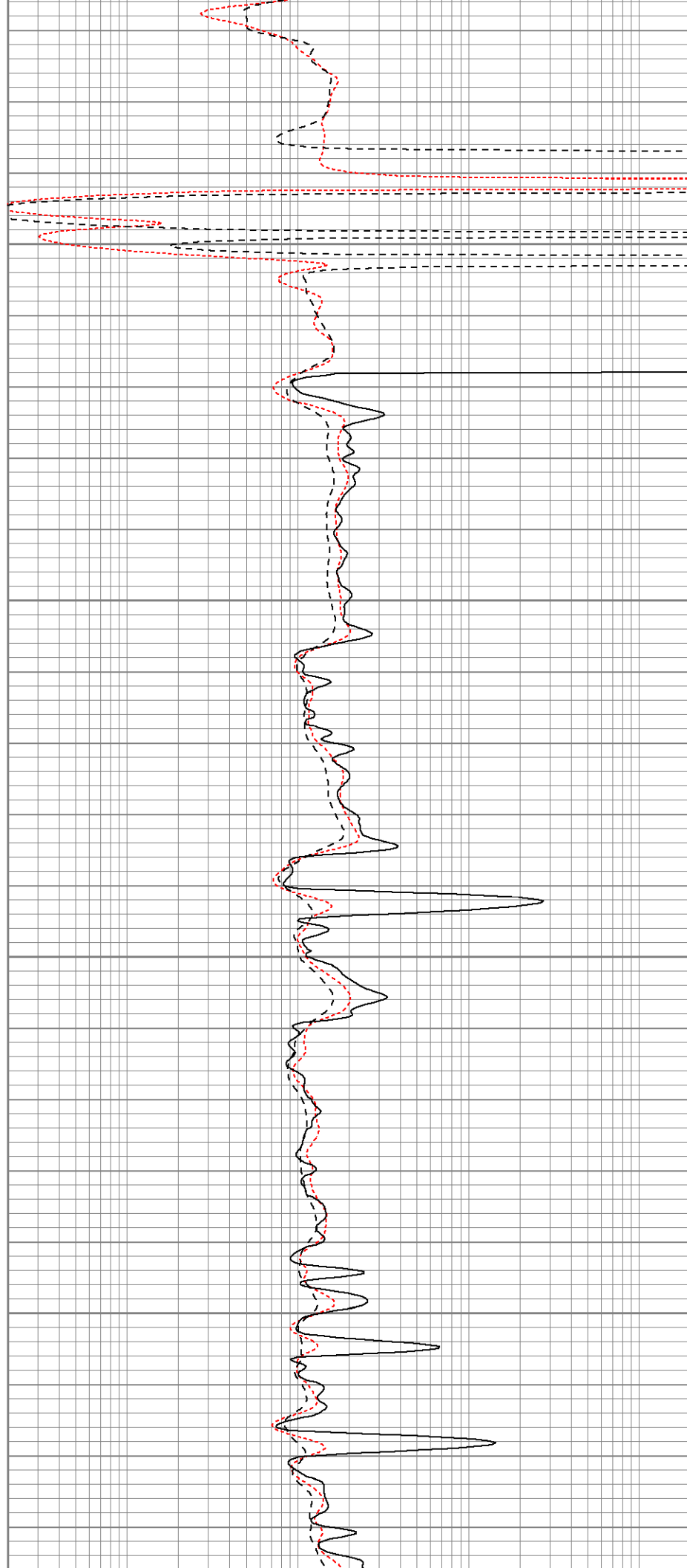
Fluid Level

1350

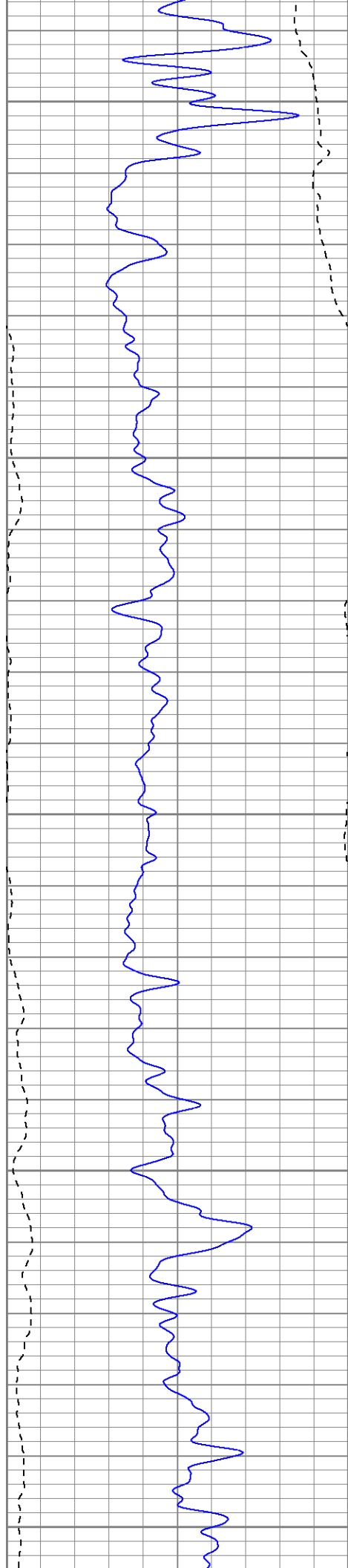
1400

1450

1500







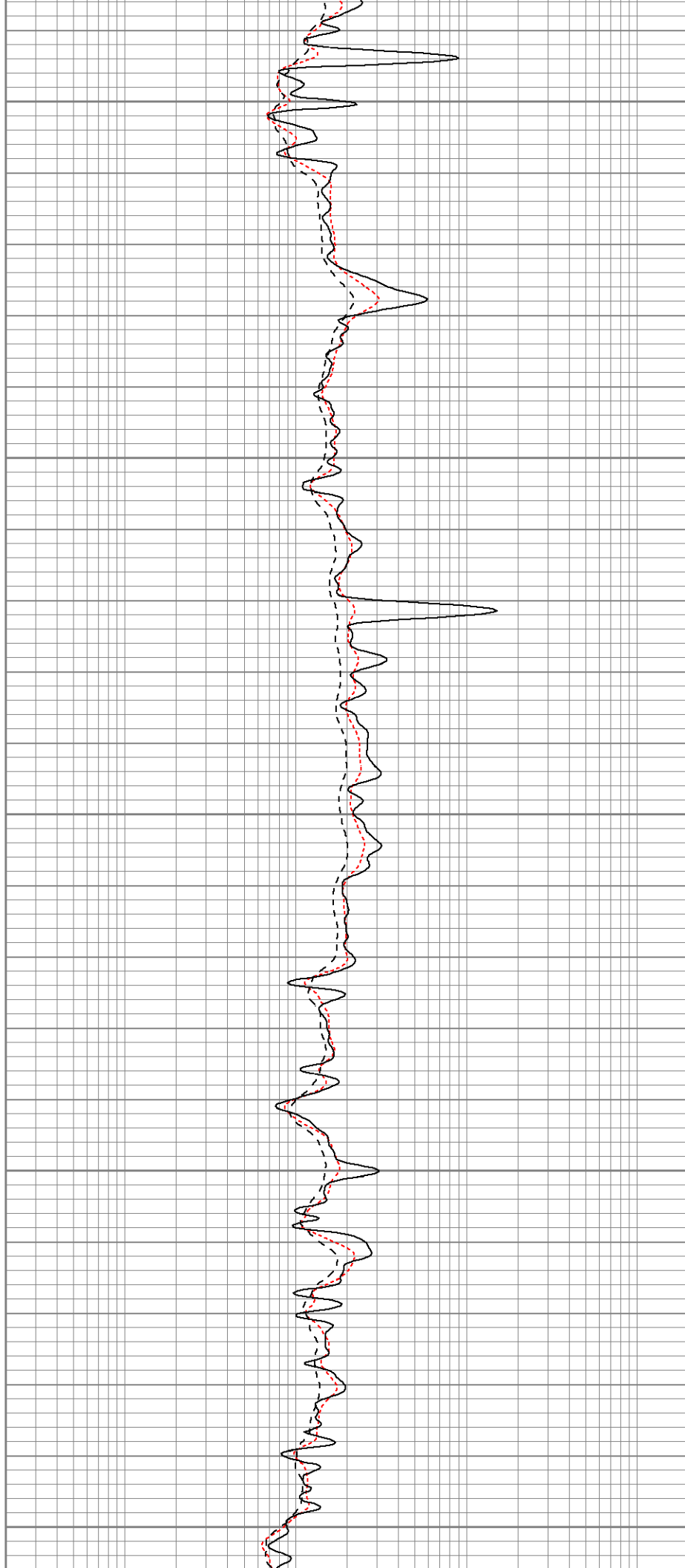
1550

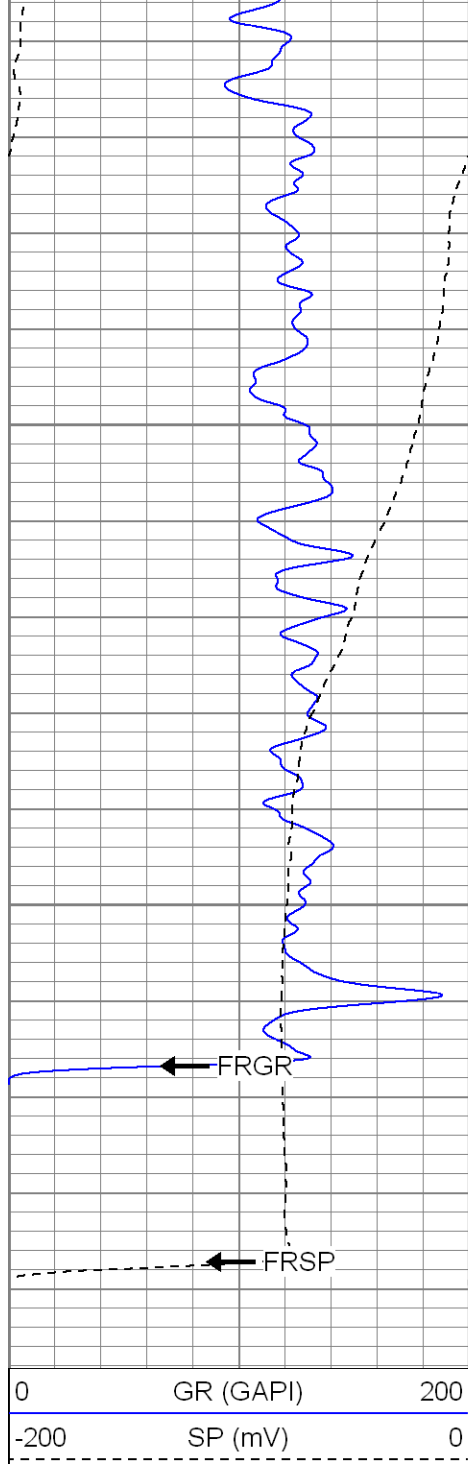
1600

1650

1700

1750



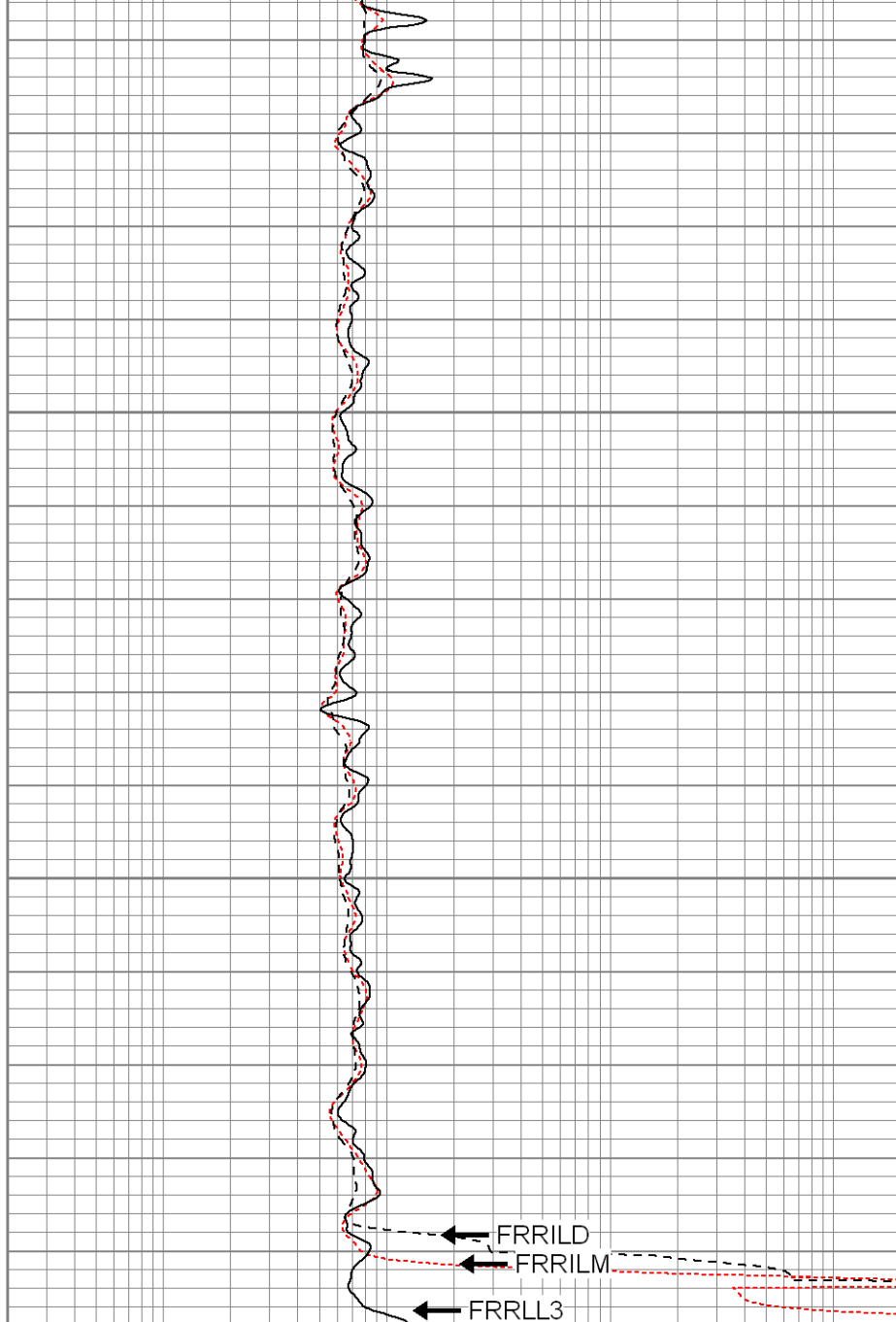


1800

1850

FRGR

FRSP



0.2	RILM (Ohm-m)	2000
0.2	RILD (Ohm-m)	2000
0.2	RLL3 (Ohm-m)	2000



**SUPERIOR**

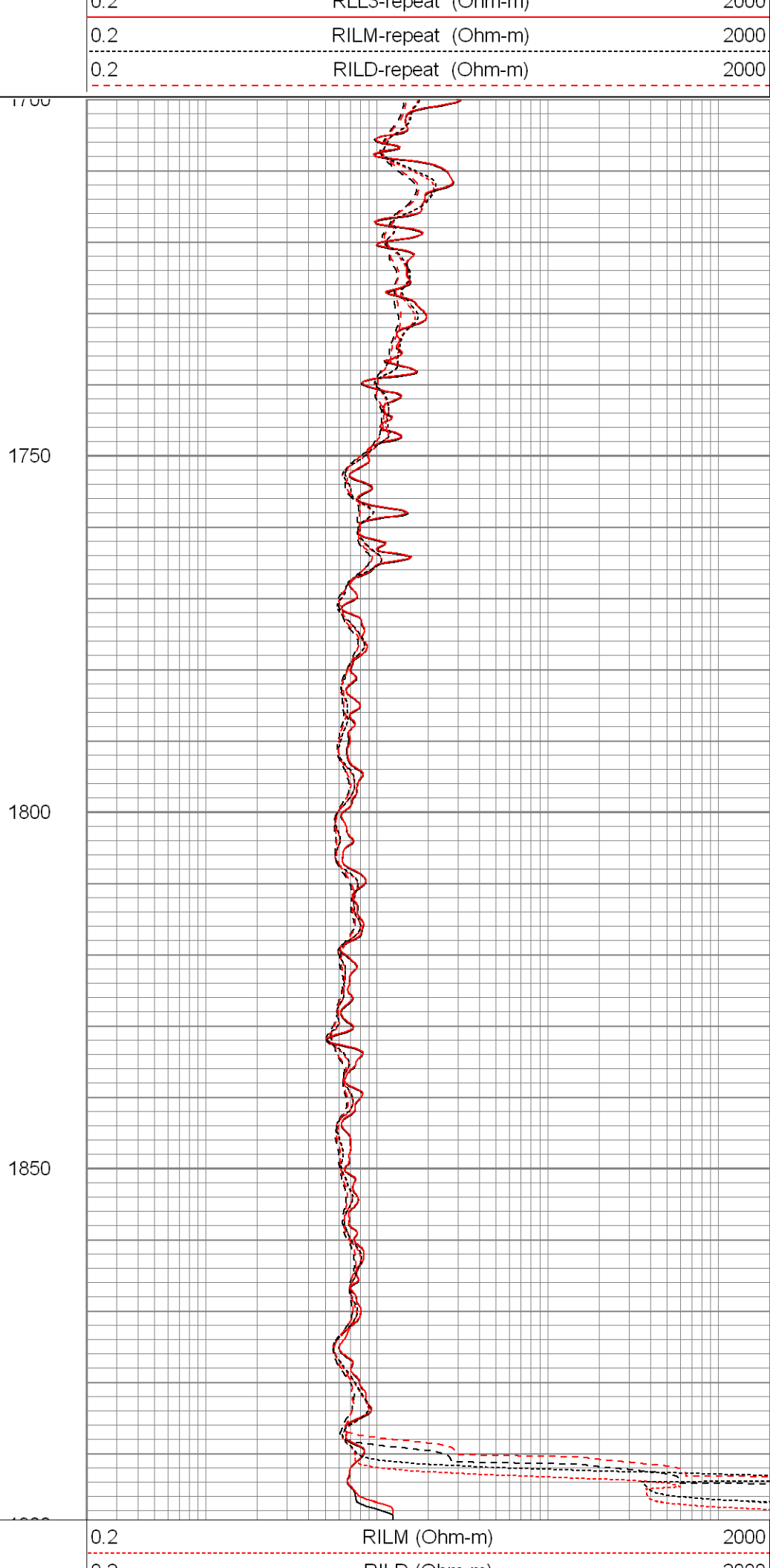
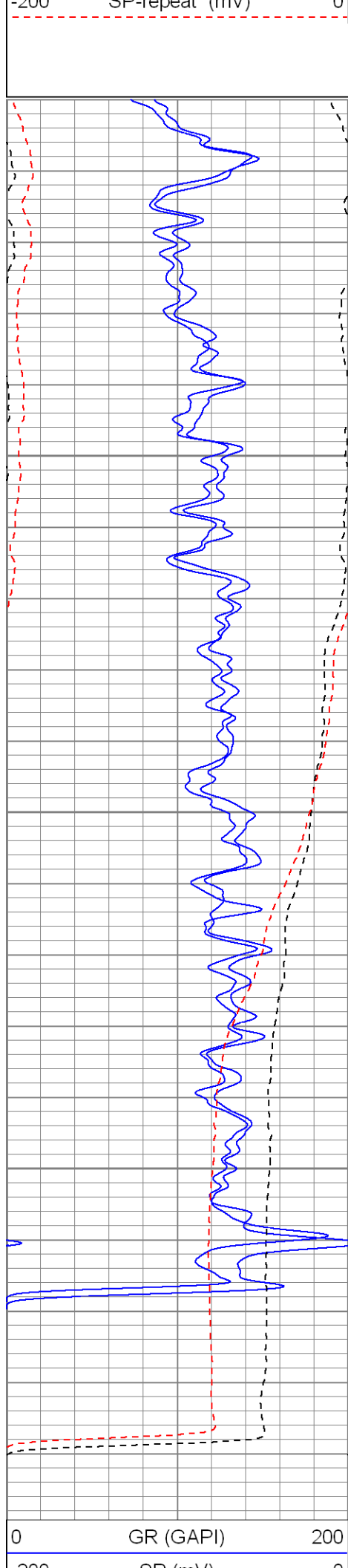
Black Lick, Pa.  
Mercer, Pa.  
Wooster, Oh.  
Cleveland, Ok.  
Trinidad, Co.

# Repeat Pass

Database File: xtone2514.db  
Dataset Pathname: pass2.1  
Presentation Format: dil  
Dataset Creation: Thu Jun 12 13:04:15 2008 by Calc Open-Cased 070814  
Charted by: Depth in Feet scaled 1:240

0	GR (GAPI)	200
-200	SP (mV)	0
0	GR-repeat (GAPI)	200
-200	SP-repeat (mV)	0



0.2	RILM (Ohm-m)	2000
0.2	RILD (Ohm-m)	2000
0.2	RLL3 (Ohm-m)	2000
0.2	RILM repeat (Ohm-m)	2000





Serial Number:	2001	
Tool Model:	OH	
Performed:	Wed Jun 04 09:52:45 2008	
Calibrator Value:	1.0	GAPI
Background Reading:	0.0	cps
Calibrator Reading:	1.0	cps
Sensitivity:	0.2500	GAPI/cps

Neutron Calibration Report		
Serial Number:	5145	
Tool Model:	G	
Performed:	Sat May 31 03:28:54 2008	
Calibrator Value:	1200	NAPI
Calibrator Reading:	1700	cps
Sensitivity:	0.705882	NAPI/cps

Sensor	Offset (ft)	Schematic	Description	Len (ft)	OD (in)	Wt (lb)	
NEU	37.73		None	0.75	1.50	5.00	
			NEU-G (5145) Gearhart Epithermal	5.65	3.50	85.00	
GR	31.47		GR-OH (2001) 2001	3.56	3.25	40.00	
			CDL-poilex (2118)	8.83	4.00	275.00	
LSD	23.30						
DCAL	22.89						
SSD	22.72						
CILD SP	10.60			DIL-Probe (080522) Probe Dual Induction	21.47	4.00	345.00
	10.60						
CILM	6.89						
RLL3	1.70						

Dataset:	xtonc2514.db: field/well/run/pass/
Total Length:	40.26 ft
Total Weight:	750.00 lb
O.D.	4.00 in