



SUPERIOR
Black Lick, Pa.
Mercer, Pa.
Wooster, Oh.
Cleveland, Ok.
Trinidad, Co.

CEMENT BOND GAMMA RAY LOG

Company XTO Energy Inc.

Well New Elk 24-15

Field Purgatoire River

County Las Animas

State CO

Company XTO Energy Inc.

Well New Elk 24-15

Field Purgatoire River

County Las Animas

State CO

Location:

API # : 05 071 09472 00
666' FSL & 2354' FEL

Other Services

SEC 36 TWP 34S RGE 67W

Elevation

Permanent Datum Ground Level Elevation 7955'

Log Measured From Ground Level

Drilling Measured From Ground Level

K.B. -----
D.F. -----
G.L. 7955'

Date

6-2-08

Run Number

Two

Depth Driller

2480'

Depth Logger

2399'

Bottom Logged Interval

2395'

Top Log Interval

Surface

Open Hole Size

7 7/8"

Type Fluid

Water

Density / Viscosity

///

Max. Recorded Temp.

120 F

Estimated Cement Top

322'

Time Well Ready

Portable Mast

Time Logger on Bottom

12:30 P.M.

Equipment Number

T0698

Location

Trinidad

Recorded By

W. Hargrove

Witnessed By

Mr. Steve Dominguez

Borehole Record

Run Number

Bit

From

To

Size

Weight

From

To

Casing Record

Size

Wgt/Ft

Top

Bottom

Surface String

8 5/8"

00

764'

Prot. String

5 1/2"

00

2454'

Production String

5 1/2"

00

2454'

Liner

5 1/2"

00

2454'

<<< Fold Here >>>

All interpretations are opinions based on inferences from electrical or other measurements and we cannot and do not guarantee the accuracy or correctness of any interpretation, and we shall not, except in the case of gross or willful negligence on our part, be liable or responsible for any loss, costs, damages, or expenses incurred or sustained by anyone resulting from any interpretation made by any of our officers, agents or employees. These interpretations are also subject to our general terms and conditions set out in our current Price Schedule.

Comments

Second Bosque entrance, to Apache Canyon, take first right past windmill, follow up hill thru one location take hard right up hill, first drive location on top of hill.



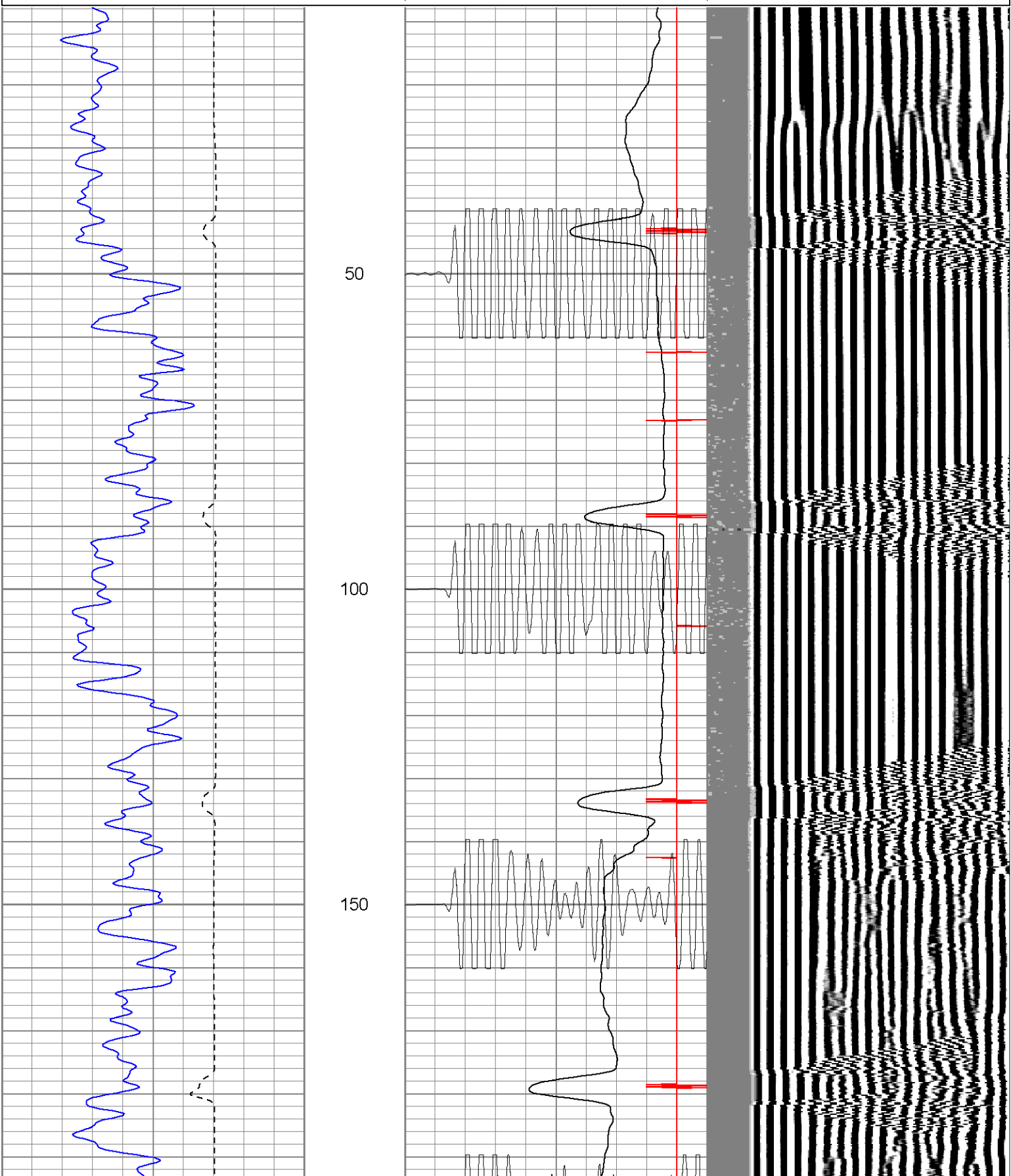
SUPERIOR

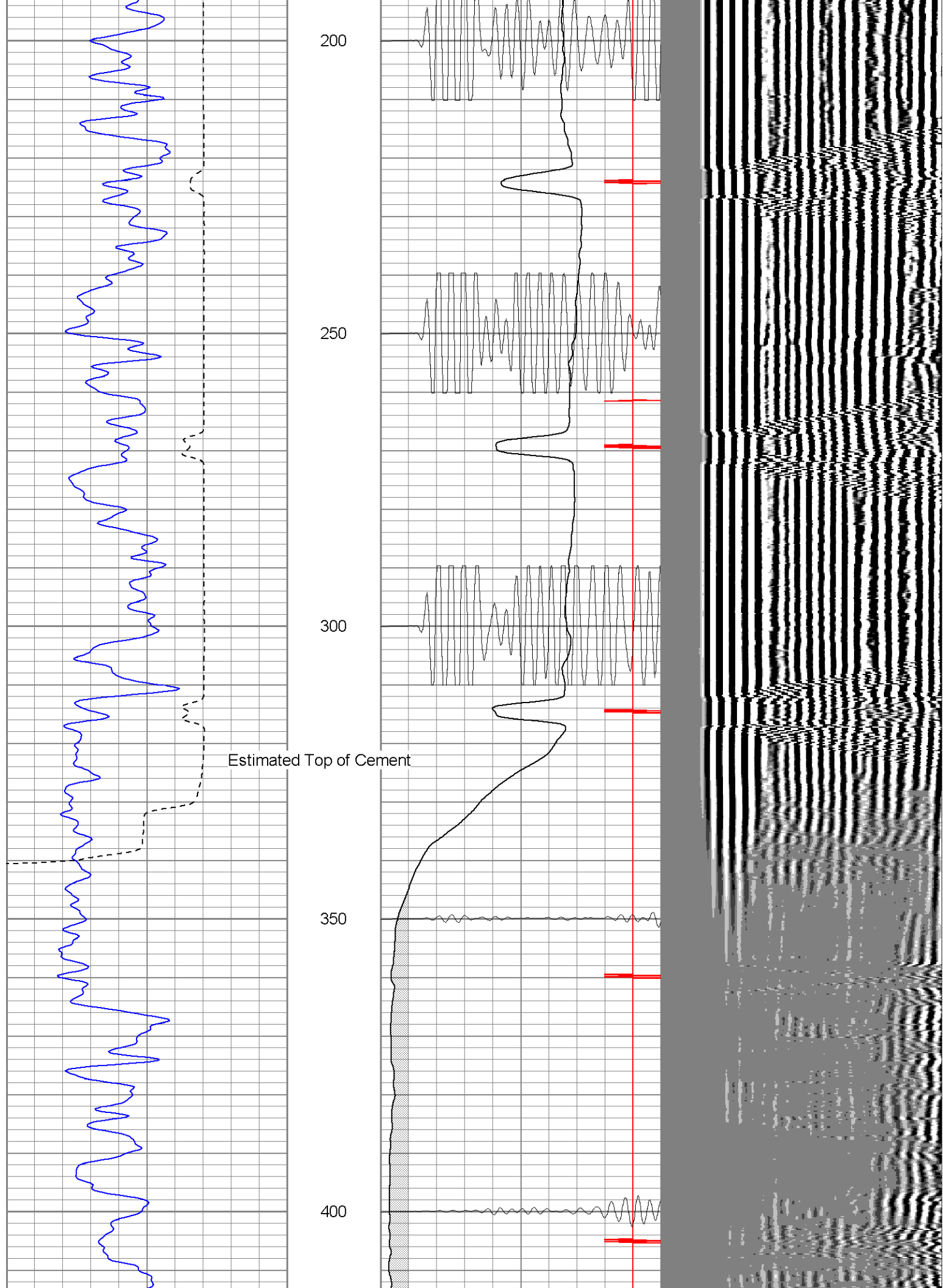
Black Lick, Pa.
Mercer, Pa.
Wooster, Oh.
Cleveland, Ok.
Trinidad, Co.

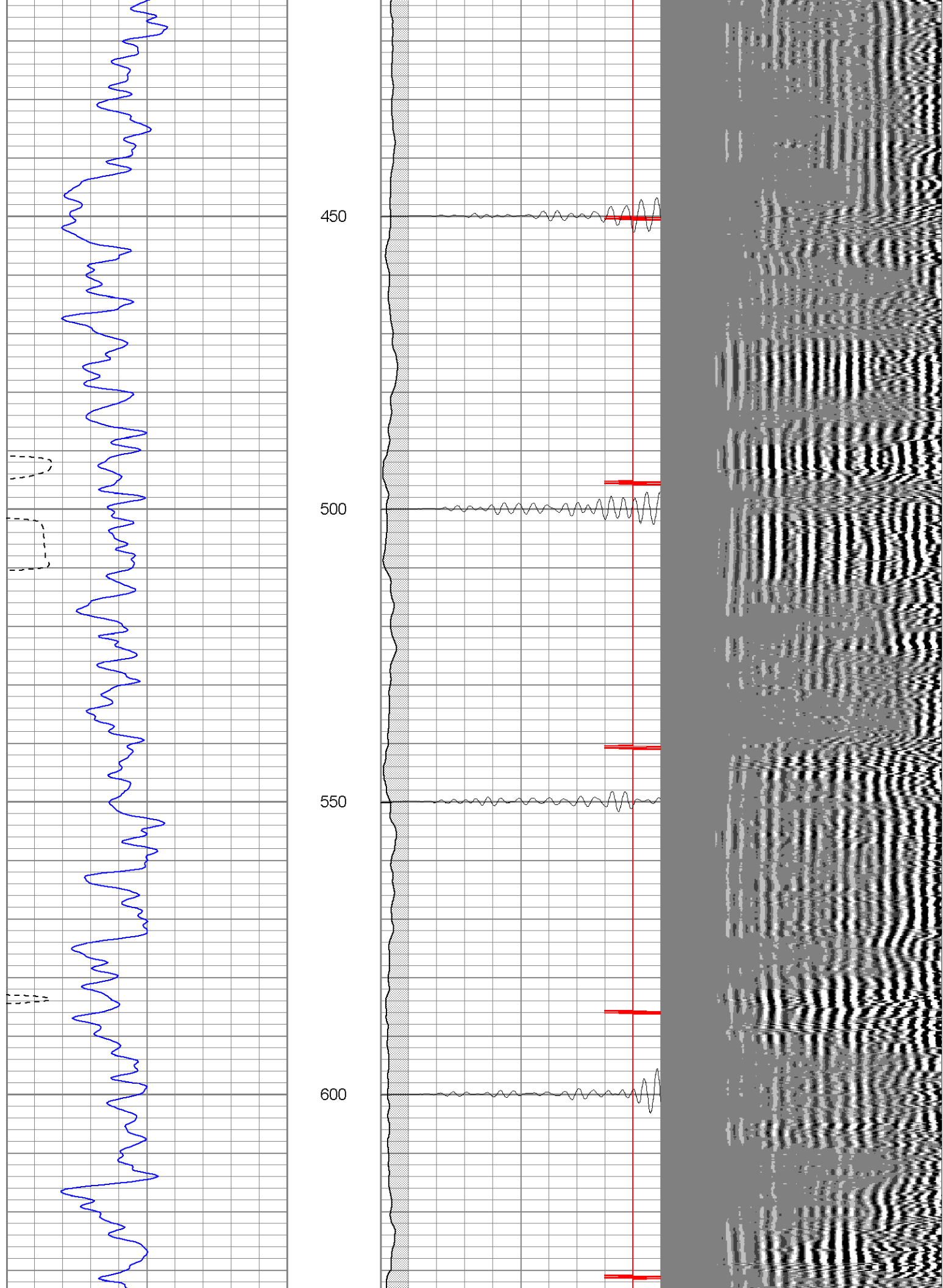
Main Pass

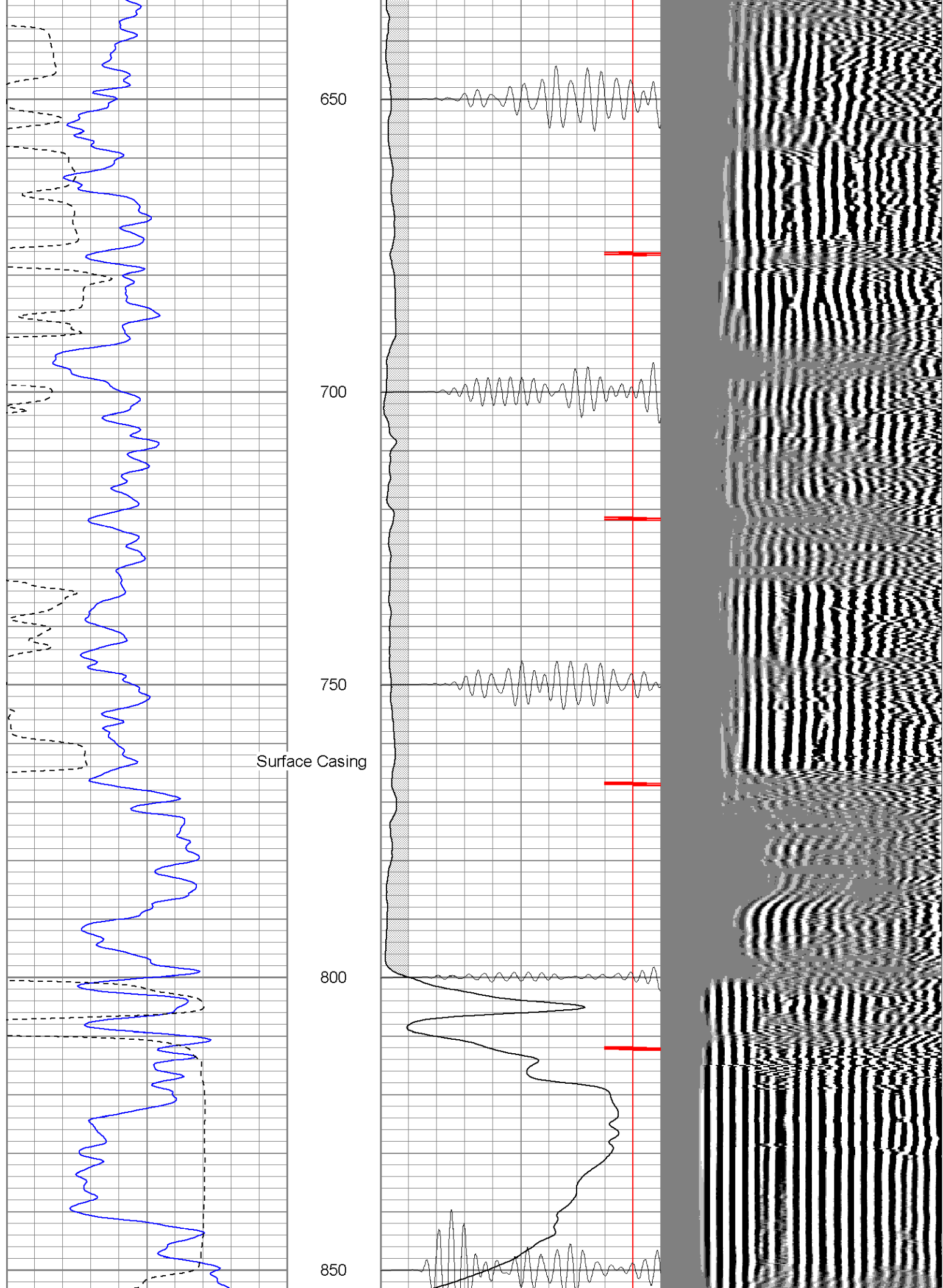
Database File: newelk24156208b.db
Dataset Pathname: pass2
Presentation Format: cblrt
Dataset Creation: Mon Jun 02 12:32:28 2008 by Log Open-Cased 071220
Charted by: Depth in Feet scaled 1:240

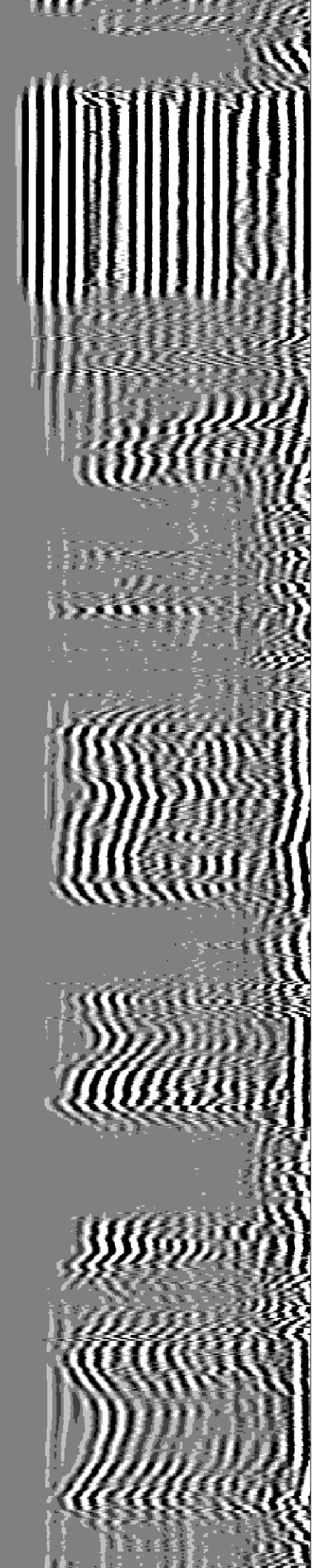
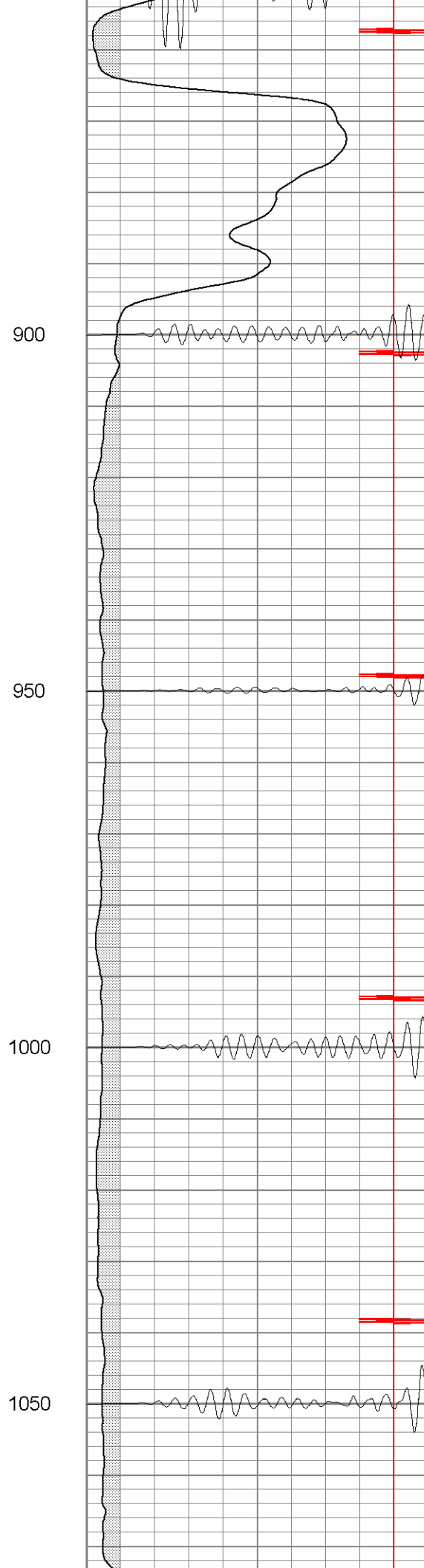
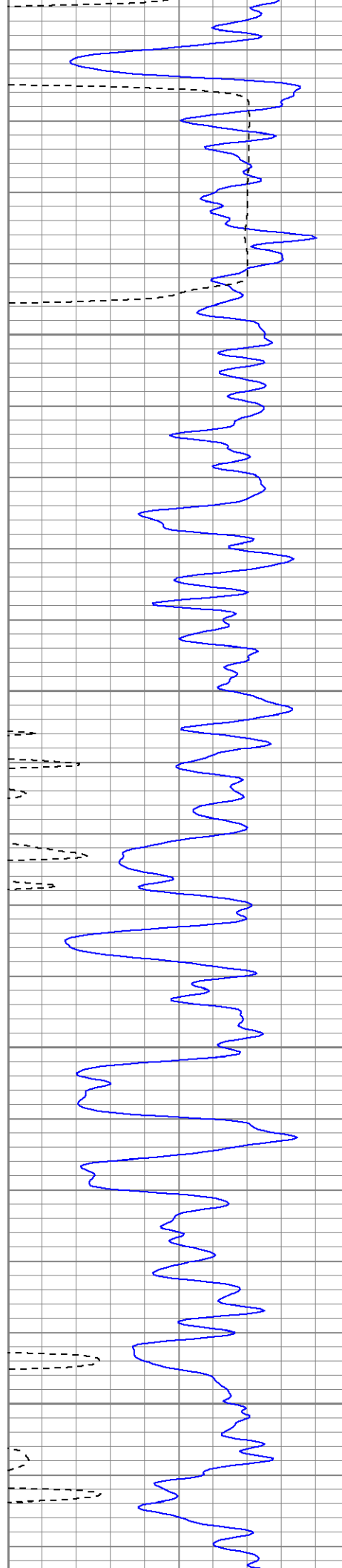
0	GR (GAPI)	200	0	AMP3 (mV)	100	200	Variable Density	1200
400	TT3 (usec)	200	18	CCL	-2			
			200	CBL5	1200			

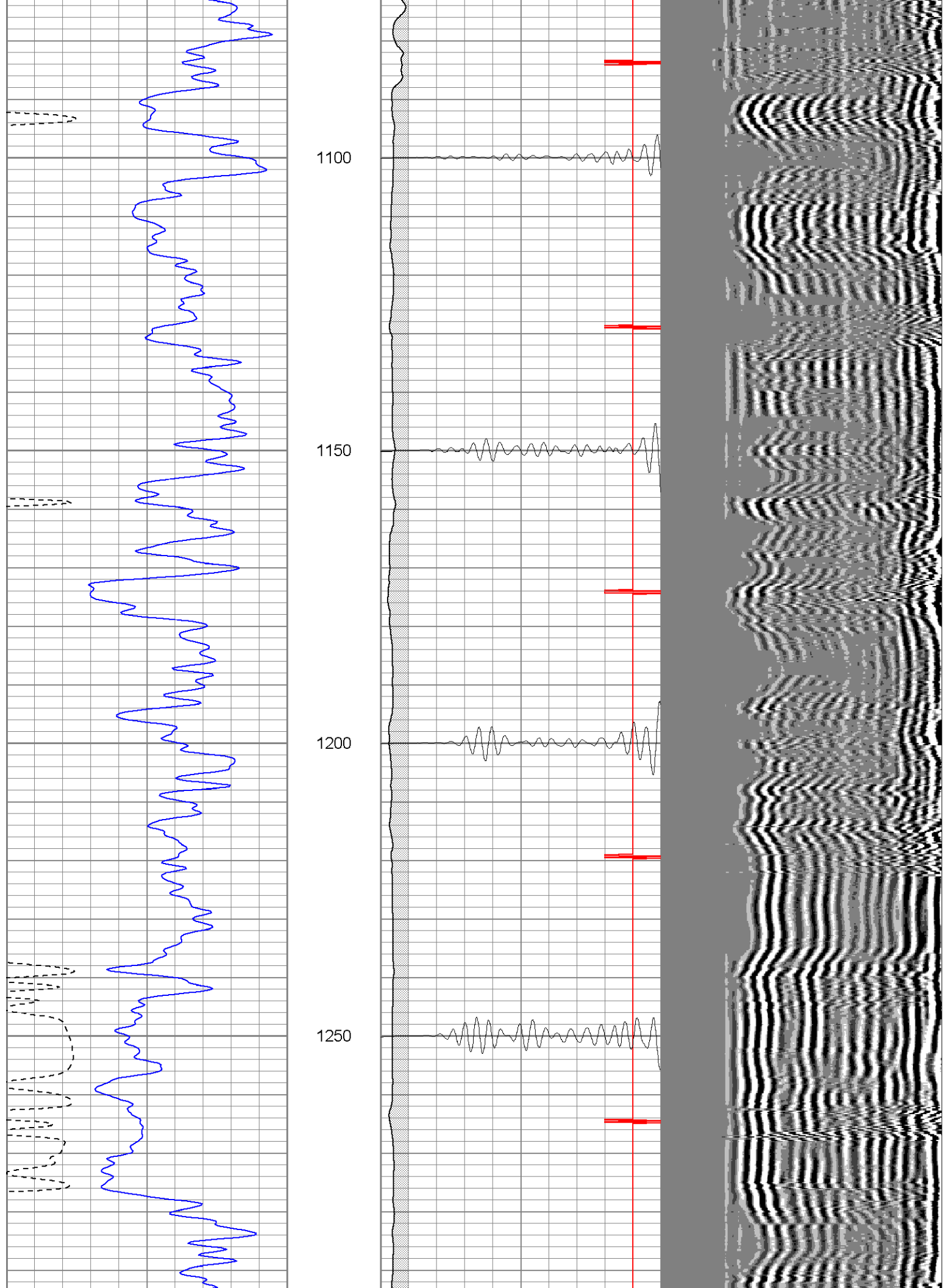


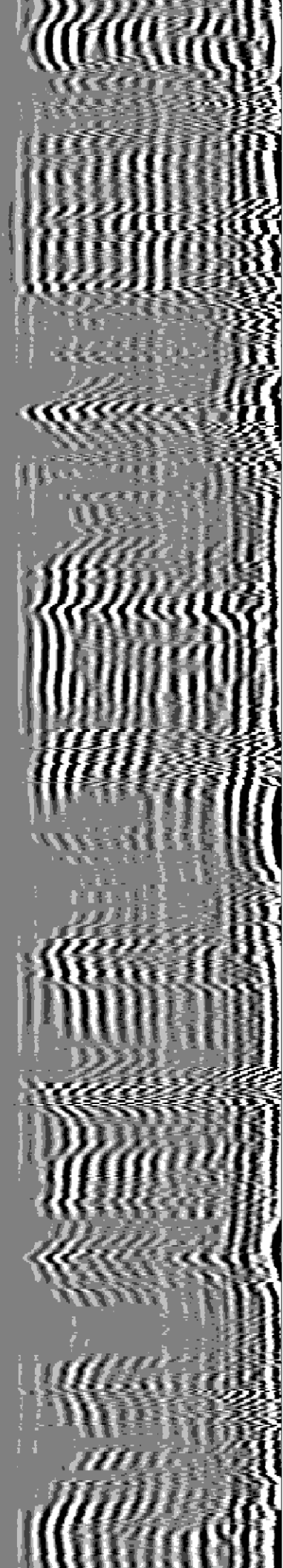
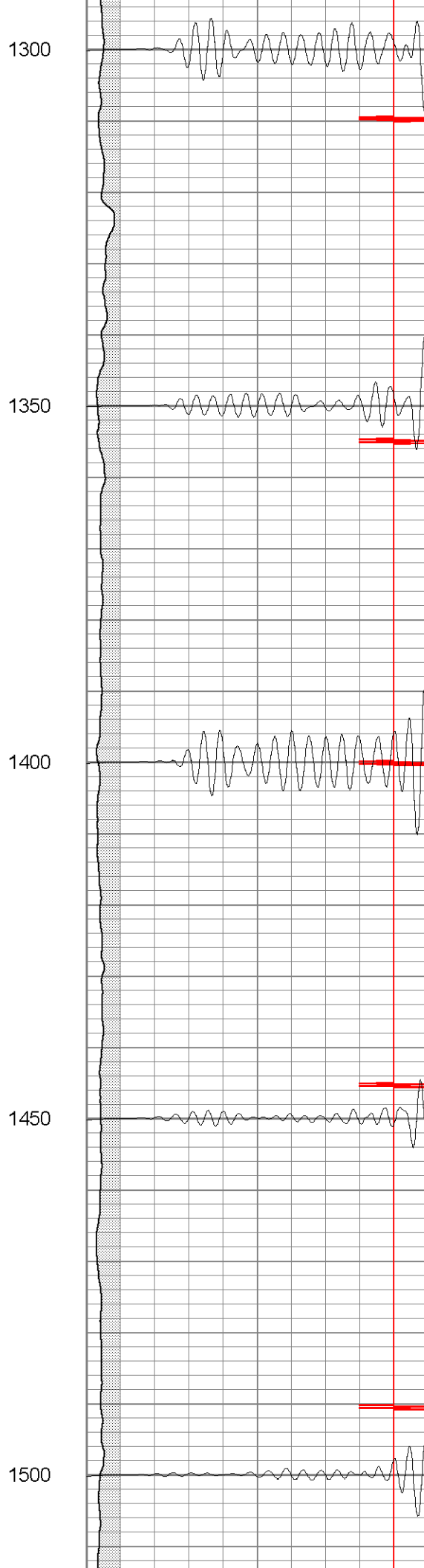
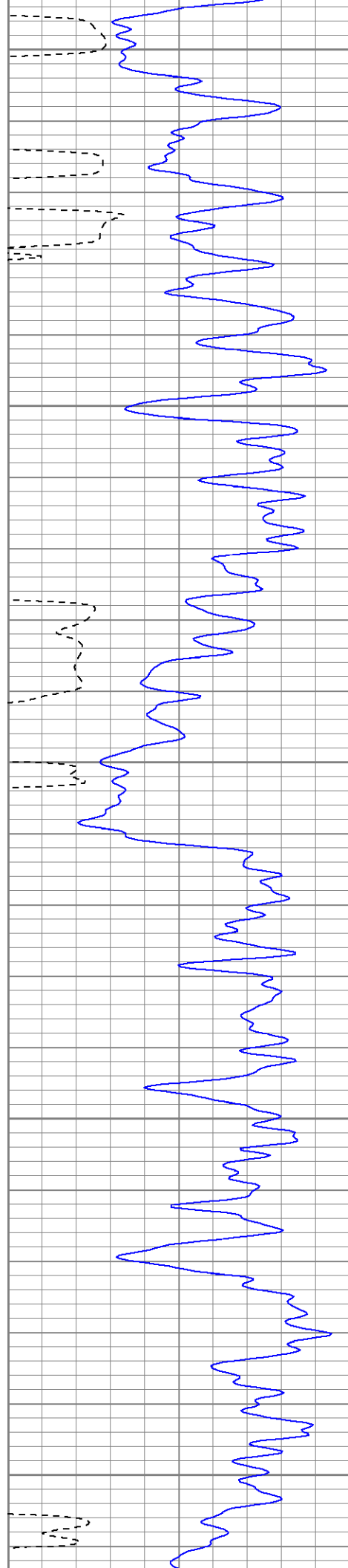


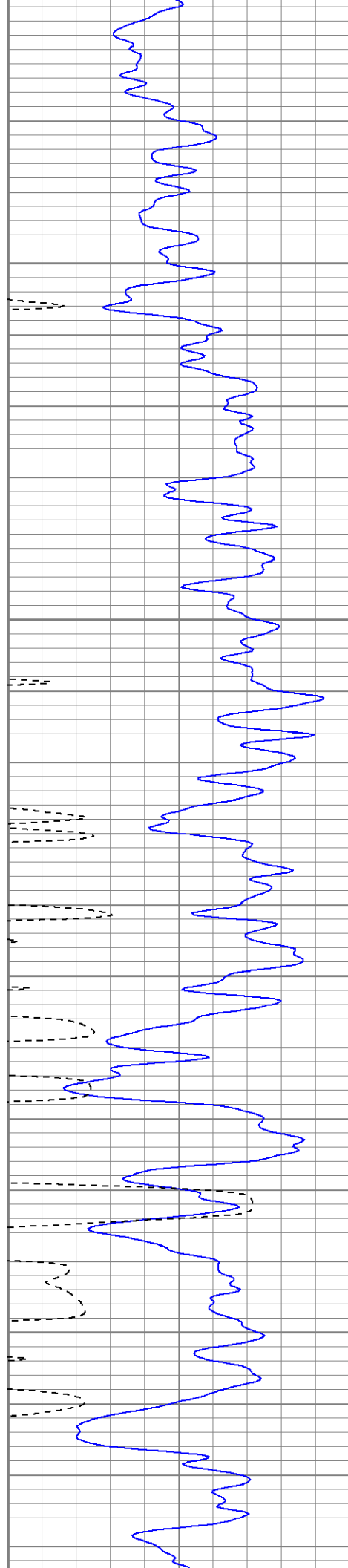










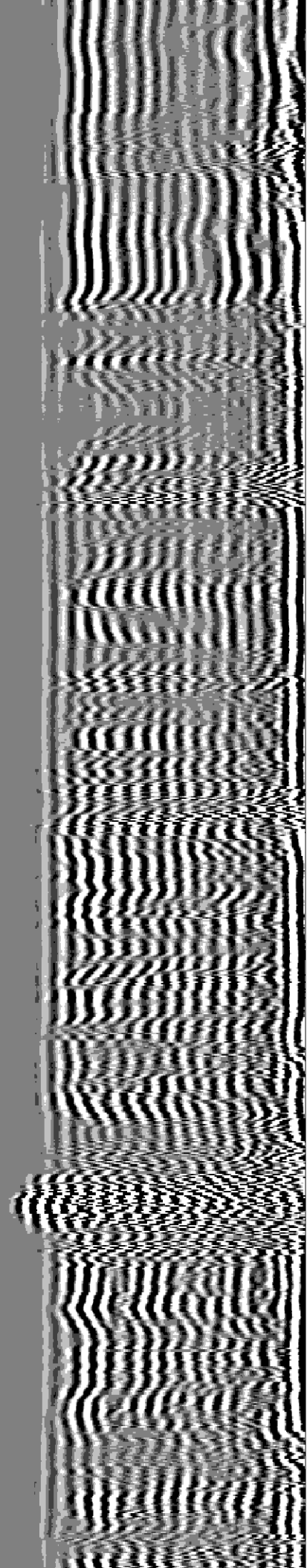
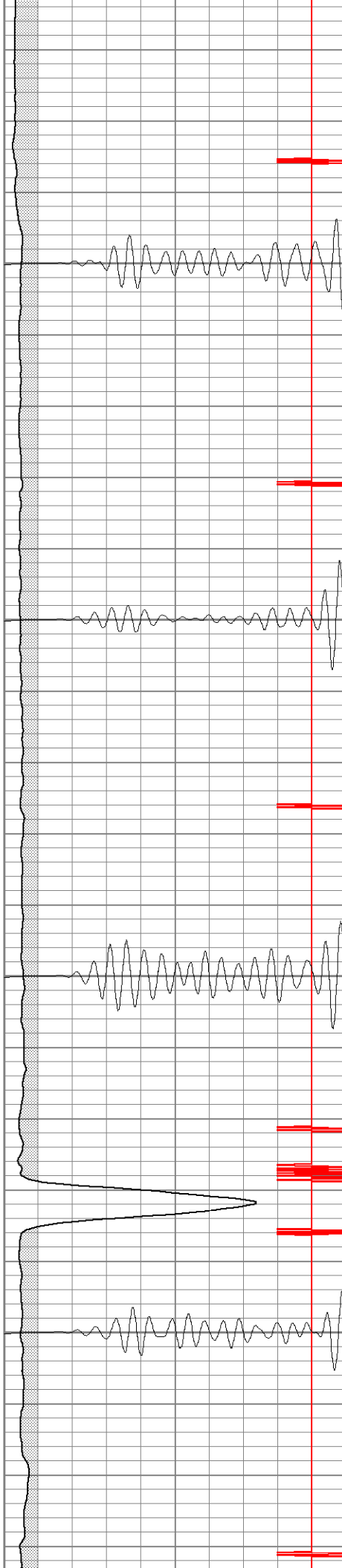


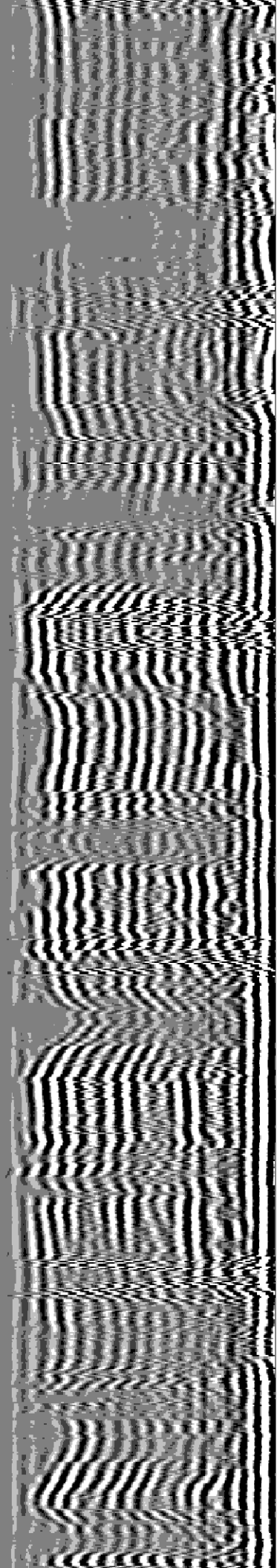
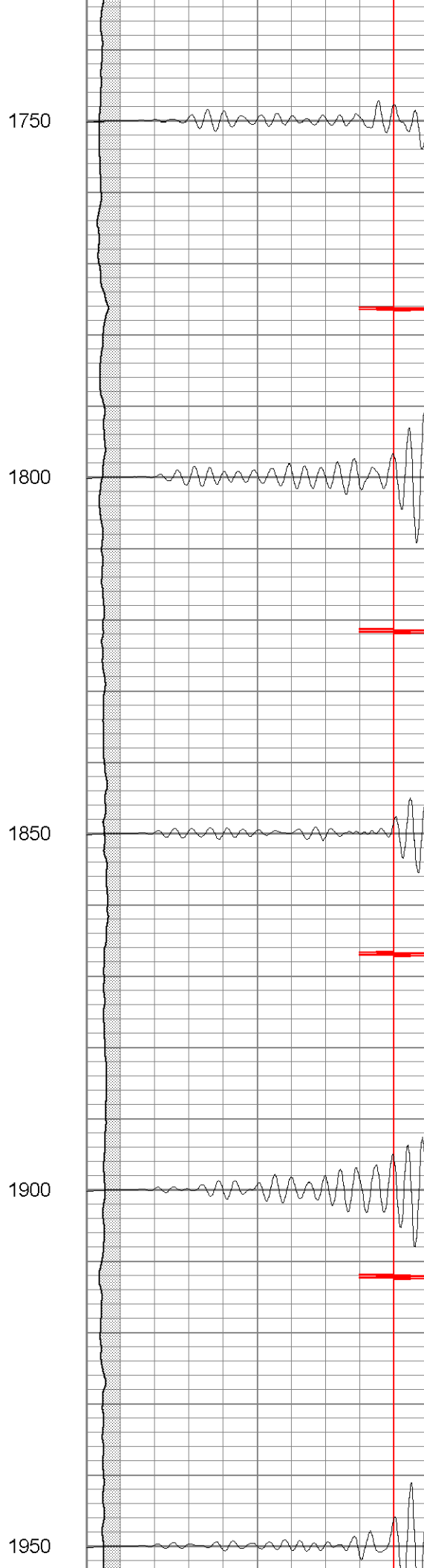
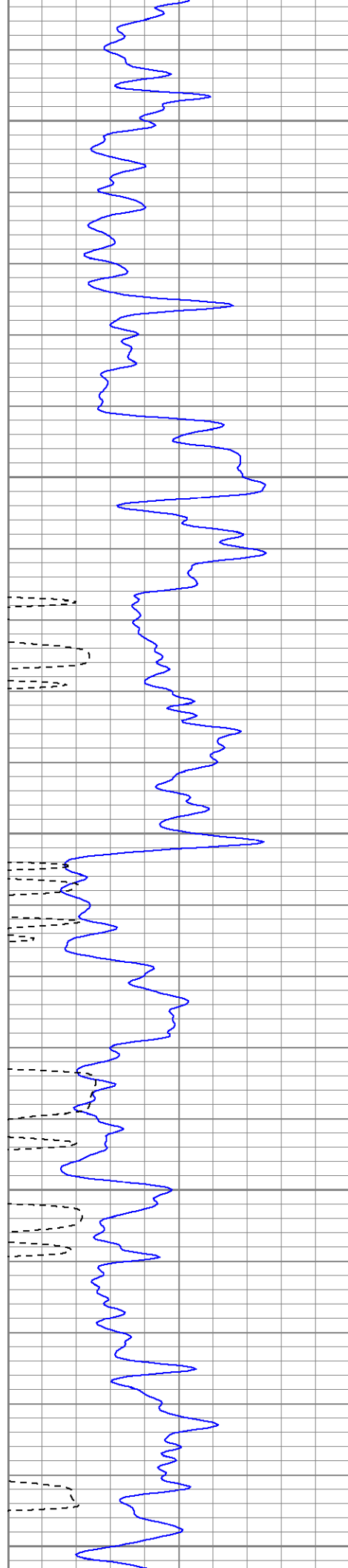
1550

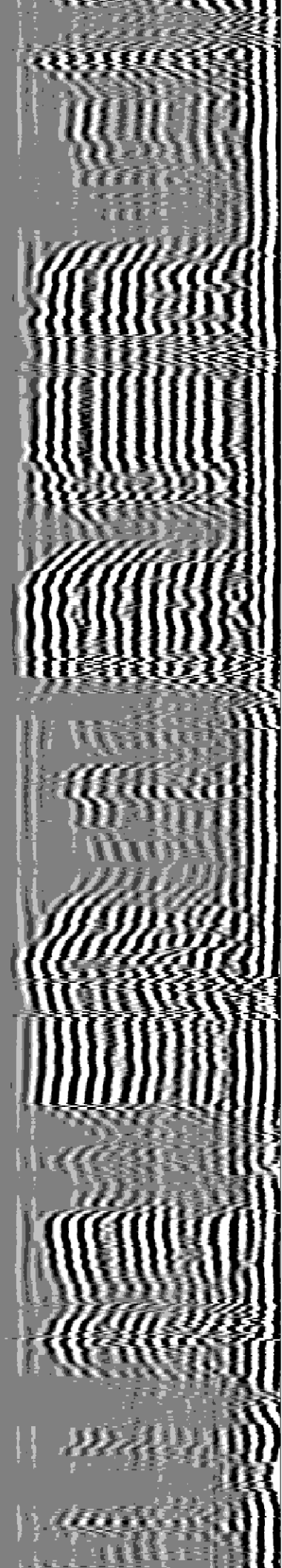
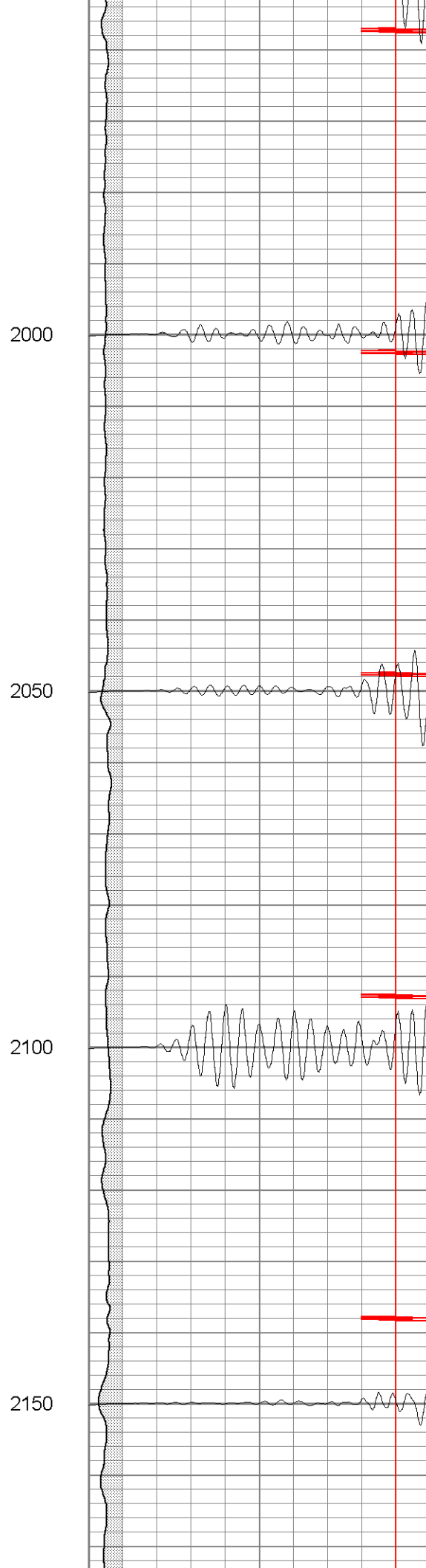
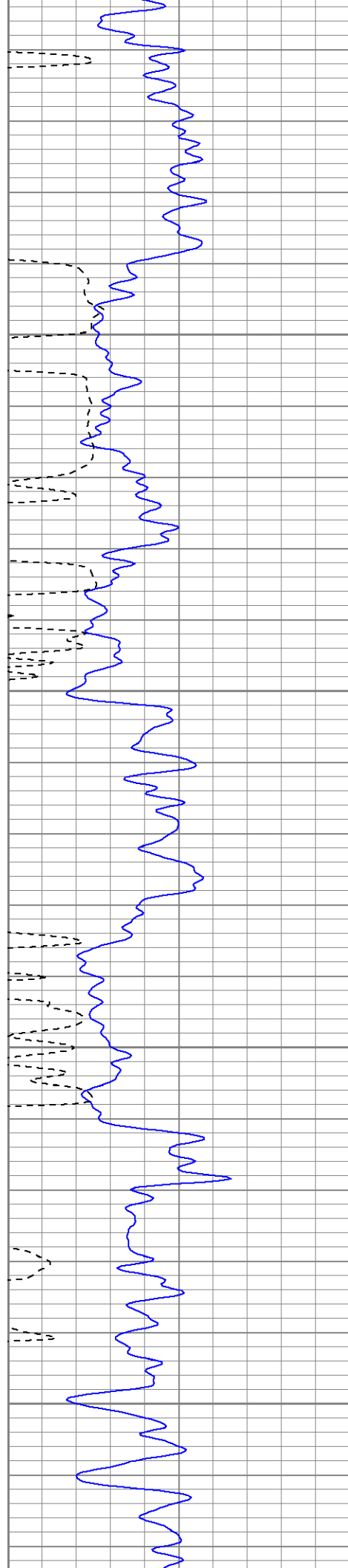
1600

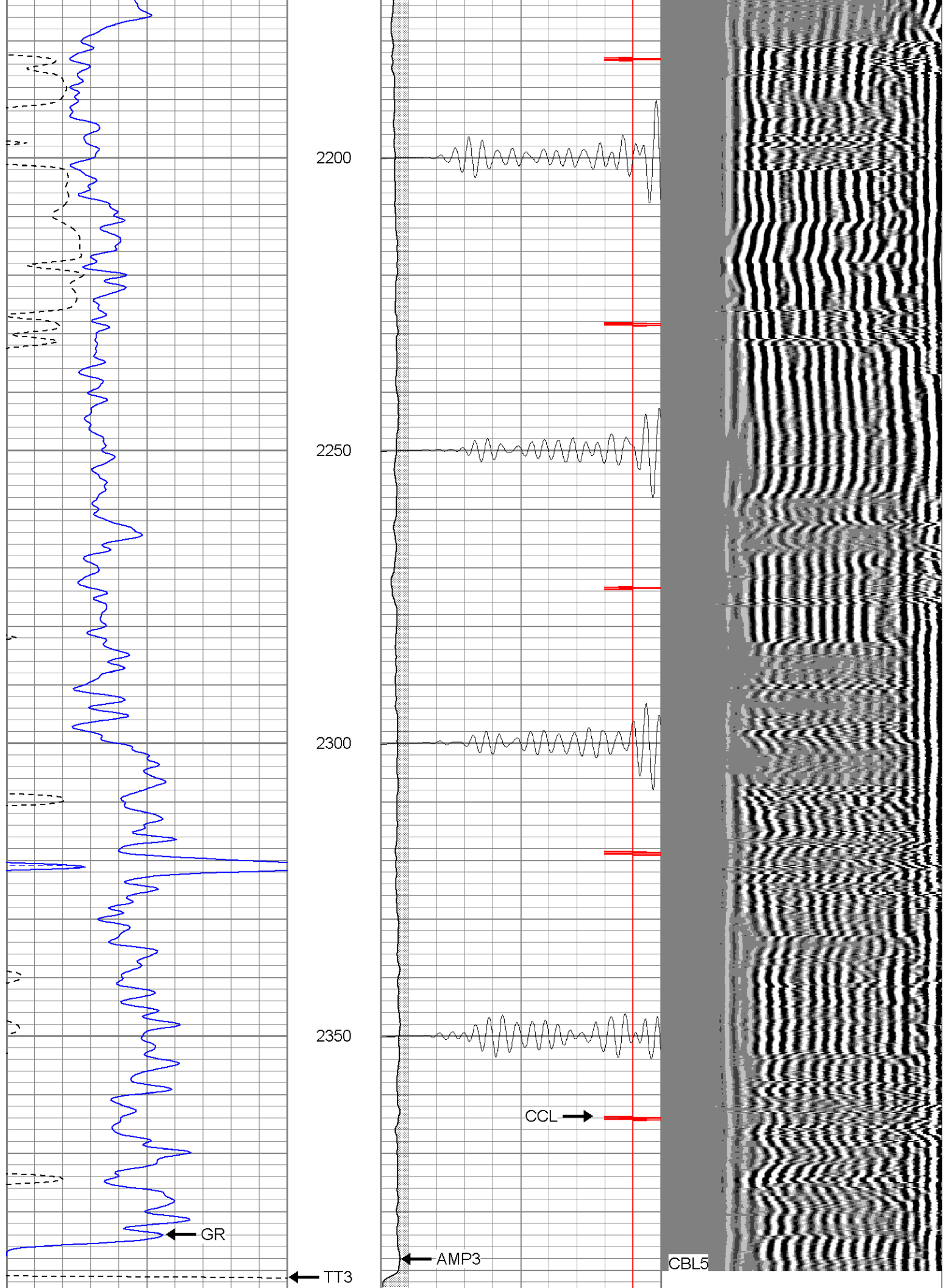
1650

1700









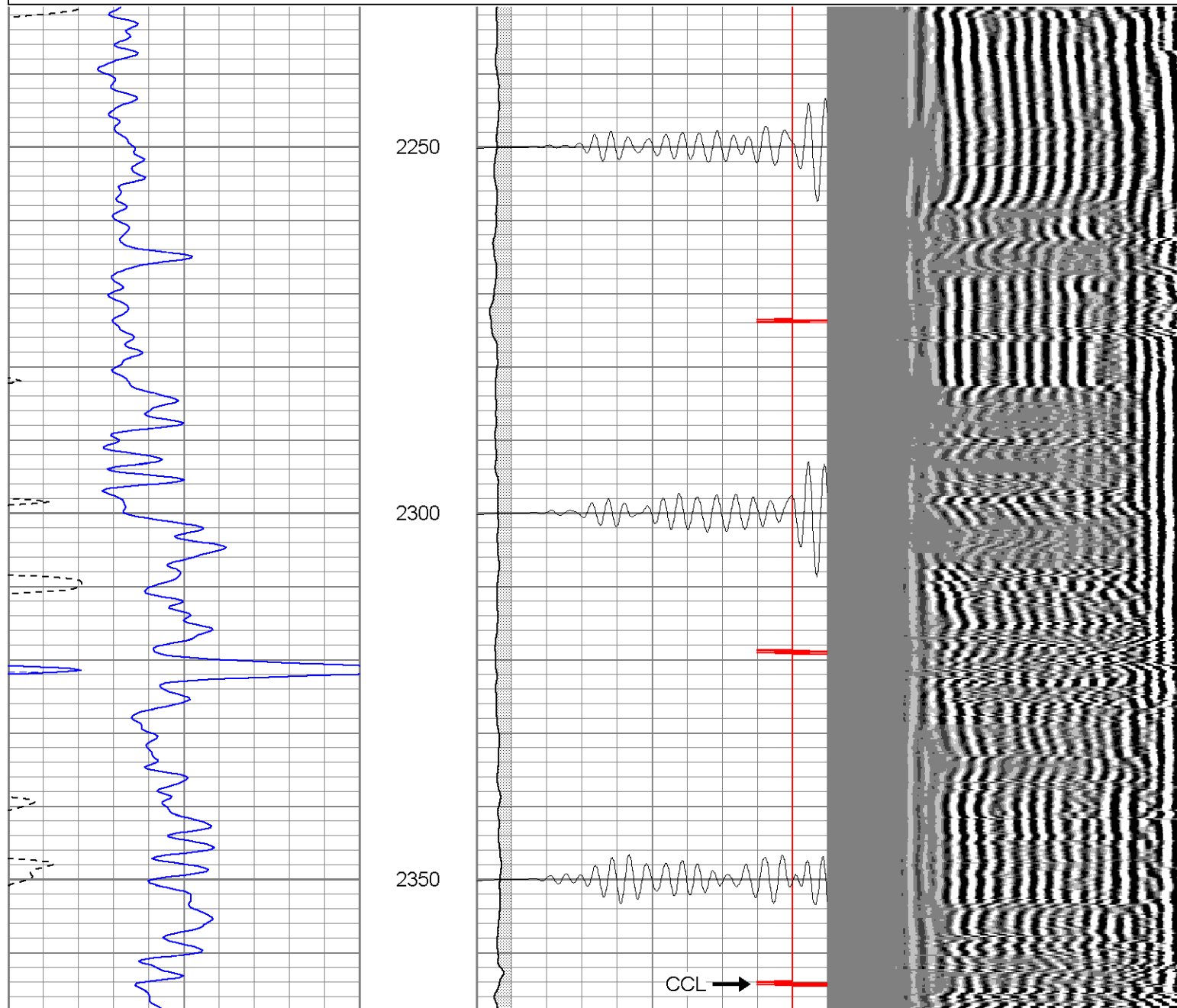
0	GR (GAPI)	200	0	AMP3 (mV)	100	200	Variable Density	1200
400	TT3 (usec)	200	18	CCL	-2			
			200	CBL5	1200			

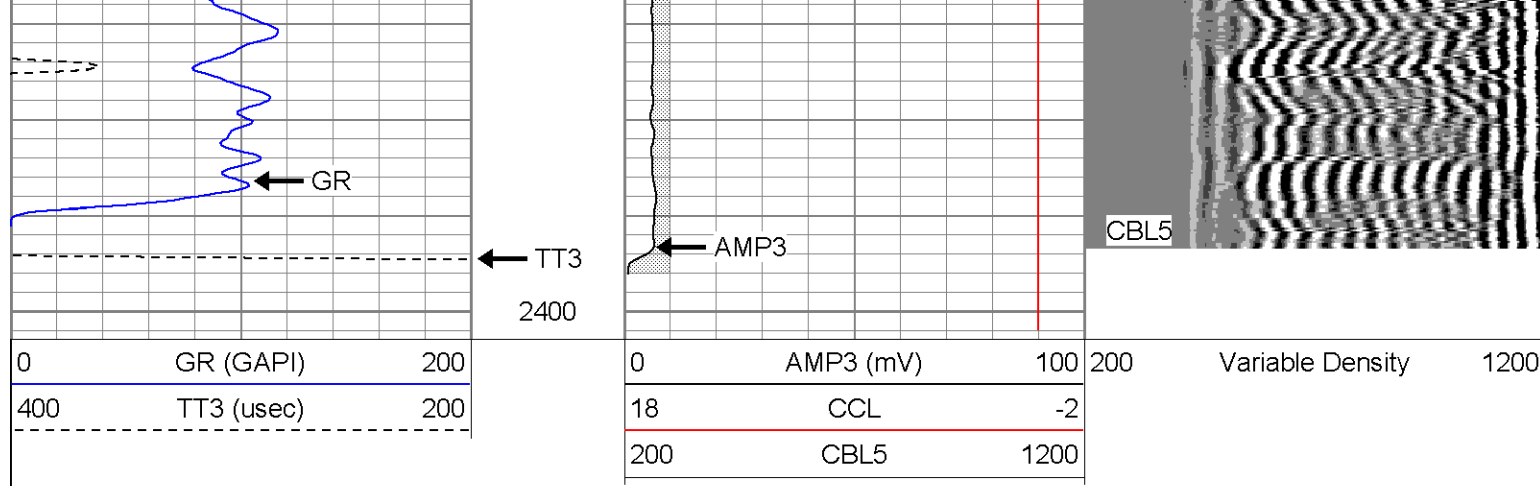


Repeat Section

Database File: newelk24156208b.db
Dataset Pathname: pass1
Presentation Format: cblrt
Dataset Creation: Mon Jun 02 12:26:03 2008 by Log Open-Cased 071220
Charted by: Depth in Feet scaled 1:240

0	GR (GAPI)	200	0	AMP3 (mV)	100	200	Variable Density	1200
400	TT3 (usec)	200	18	CCL	-2			
			200	CBL5	1200			





Calibration Report

Database File: newelk24156208b.db
 Dataset Pathname: pass1
 Dataset Creation: Mon Jun 02 12:26:03 2008 by Log Open-Cased 071220

Cement Bond Log Calibration Report

Serial Number: Titan6
 Tool Model: T6
 Performed: Mon May 19 12:37:31 2008

Depth: 1272.56 ft
 Casing Diameter: 5.5 in

	3' Spacing	5' Spacing	
Signal Zero:	0	0	mV
Calibrated Amplitude:	85	85	mV
Reading at Signal Zero:	-0.02	0.0169922	V
Reading in Free Pipe:	1.85	1.63	V
Gain:	45.4545	52.6966	
Offset:	0.909091	0	




Gamma Ray Calibration Report

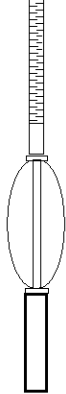
Serial Number: Titan6
 Tool Model: T6
 Performed: Mon May 12 14:18:14 2008

Calibrator Value: 0.0 GAPI

Background Reading: 1.0 cps
 Calibrator Reading: 0.0 cps

Sensitivity: 1.1000 GAPI/cps

Sensor	Offset (ft)	Schematic	Description	Len (ft)	OD (in)	Wt (lb)
GR	13.64		CHD-None (0)	0.75	1.50	5.00
			GR-T6 (Titan6)	2.52	2.25	25.00
WVF5	9.49					
WVF3	8.40		CBL-T6 (Titan6)	7.23	2.25	110.00

WVFS	0.49					
CCL	0.81		CENT-X (2) CCL-T6long (Titan6long)	3.00	1.69	25.00
				2.15	2.75	15.00
Dataset: newelk24156208b.db: field/well/run1/pass1 Total Length: 15.66 ft Total Weight: 180.00 lb O.D. 2.75 in						