



**SUPERIOR**  
Black Lick, Pa.  
Mercer, Pa.  
Wooster, Oh.  
Cleveland, Ok.  
Trinidad, Co.

# CEMENT BOND GAMMA RAY LOG

Company XTO Energy Inc.  
Well Golden Eagle 28-13  
Field Purgatorie River  
County Las Animas  
State CO

Company XTO Energy Inc.  
Well Golden Eagle 28-13  
Field Purgatorie River  
County Las Animas  
State CO

Location: API #: 05 071 09494 00  
1291' FSL & 785' FWL  
SEC 28 TWP 33S RGE 67W  
Permanent Datum Ground Level Elevation 7240'  
Log Measured From Ground Level  
Drilling Measured From Ground Level  
Other Services  
Pressure Control/  
temp.  
Elevation  
K.B. -----  
D.F. -----  
G.L. 7240'

Date	4-4-08					
Run Number	One					
Depth Driller	1880'					
Depth Logger	1754'					
Bottom Logged Interval	1752'					
Top Log Interval	Surface					
Open Hole Size	7 7/8"					
Type Fluid	Water					
Density / Viscosity	///					
Max. Recorded Temp.	136F					
Estimated Cement Top	38'					
Time Well Ready	Portable Mast					
Time Logger on Bottom	9:45AM					
Equipment Number	T0698					
Location	Trinidad					
Recorded By	J Sisneros					
Witnessed By	Mr. Ryan Rensink					
Borehole Record					Tubing Record	
Run Number	Bit	From	To	Size	Weight	From To
Casing Record	Size		Wgt/Ft		Top	Bottom
Surface String	8 5/8"				00	452'
Prot. String						
Production String	5 1/2"				00	N/A
Liner						

<<< Fold Here >>>

All interpretations are opinions based on inferences from electrical or other measurements and we cannot and do not guarantee the accuracy or correctness of any interpretation, and we shall not, except in the case of gross or willful negligence on our part, be liable or responsible for any loss, costs, damages, or expenses incurred or sustained by anyone resulting from any interpretation made by any of our officers, agents or employees. These interpretations are also subject to our general terms and conditions set out in our current Price Schedule.

## Comments

Second Bosque Entrance, left on old Railroad Tracks, take first right up hill,  
take second left, dead end on location



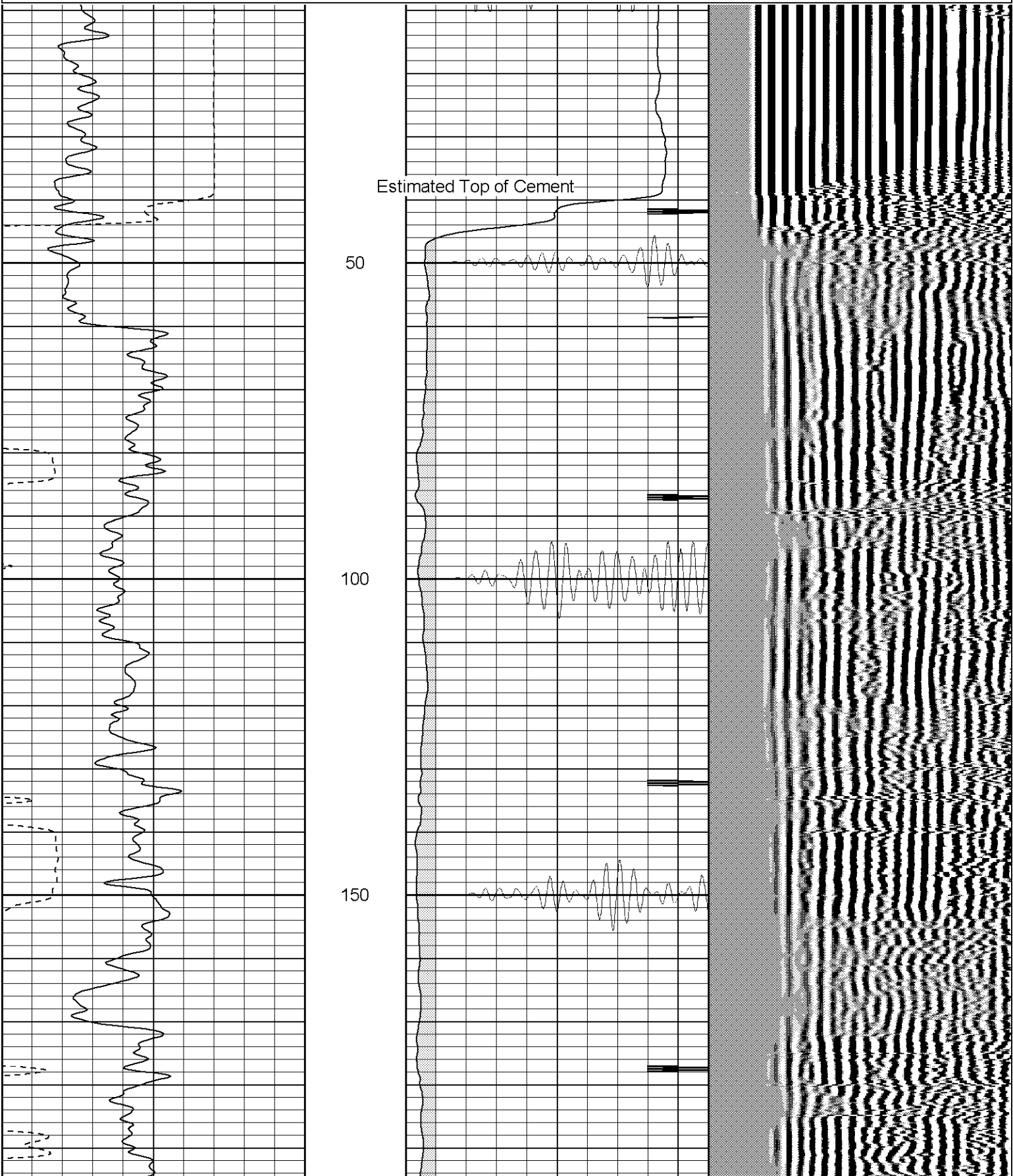
**SUPERIOR**

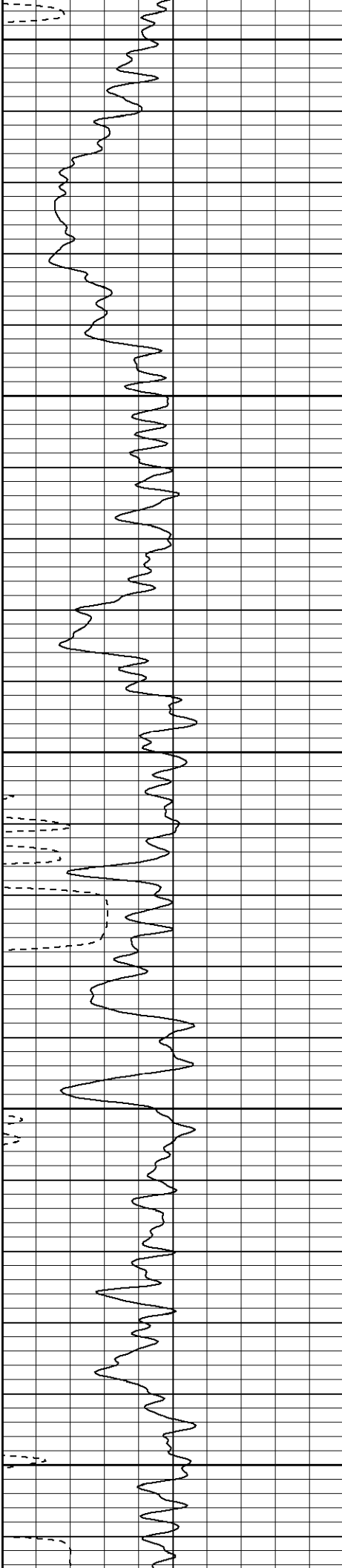
Black Lick, Pa.  
Mercer, Pa.  
Wooster, Oh.  
Cleveland, Ok.  
Trinidad, Co.

# Main Pass (1000PSI)

Database File: ge2813040408b .db  
Dataset Pathname: pass2.1  
Presentation Format: cblrt  
Dataset Creation: Fri Apr 04 10:37:56 2008 by Calc Open-Cased 070814  
Charted by: Depth in Feet scaled 1:240

0	GR (GAPI)	200	0	AMP3 (mV)	100	200	Variable Density	1200
400	TT3 (usec)	200	18	CCL	-2			
-----			200	CBL5	1200			





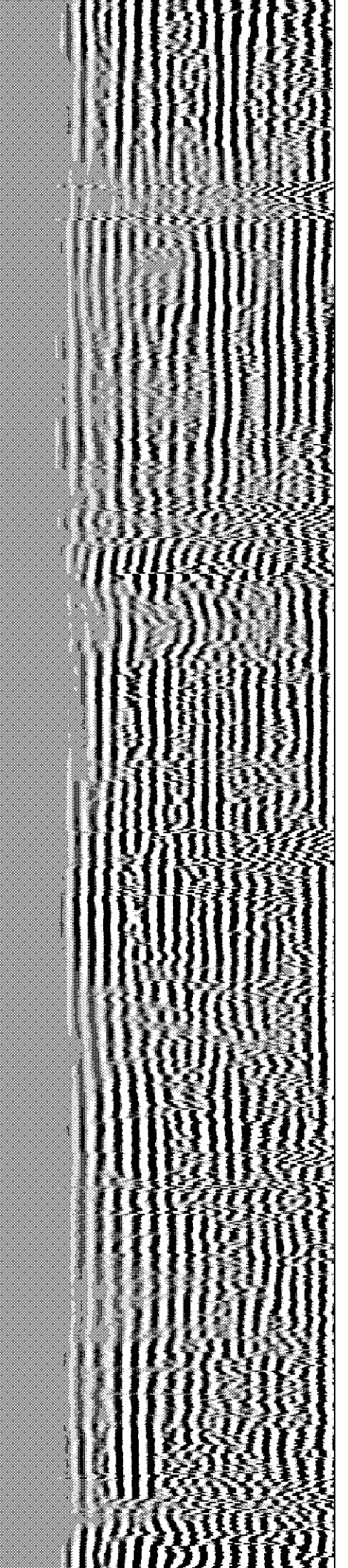
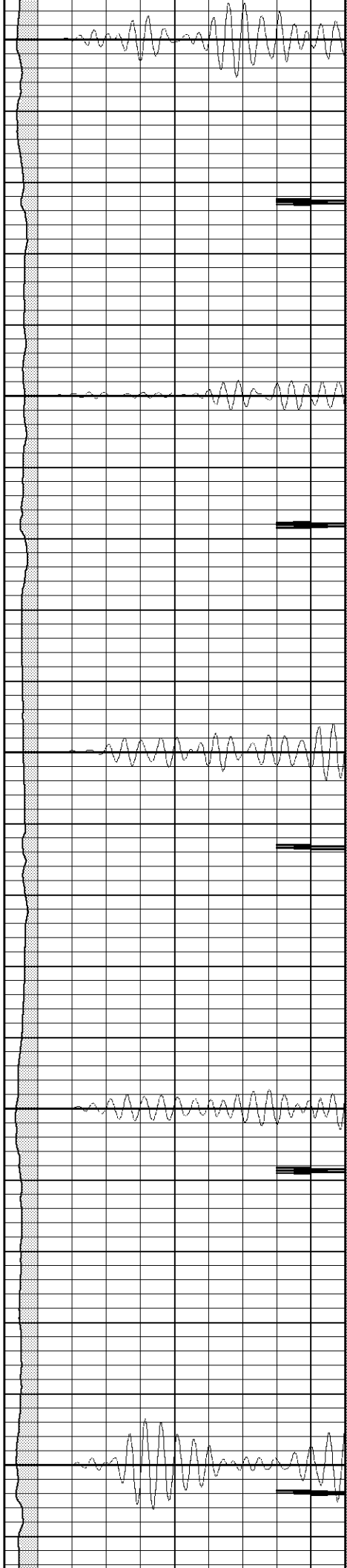
200

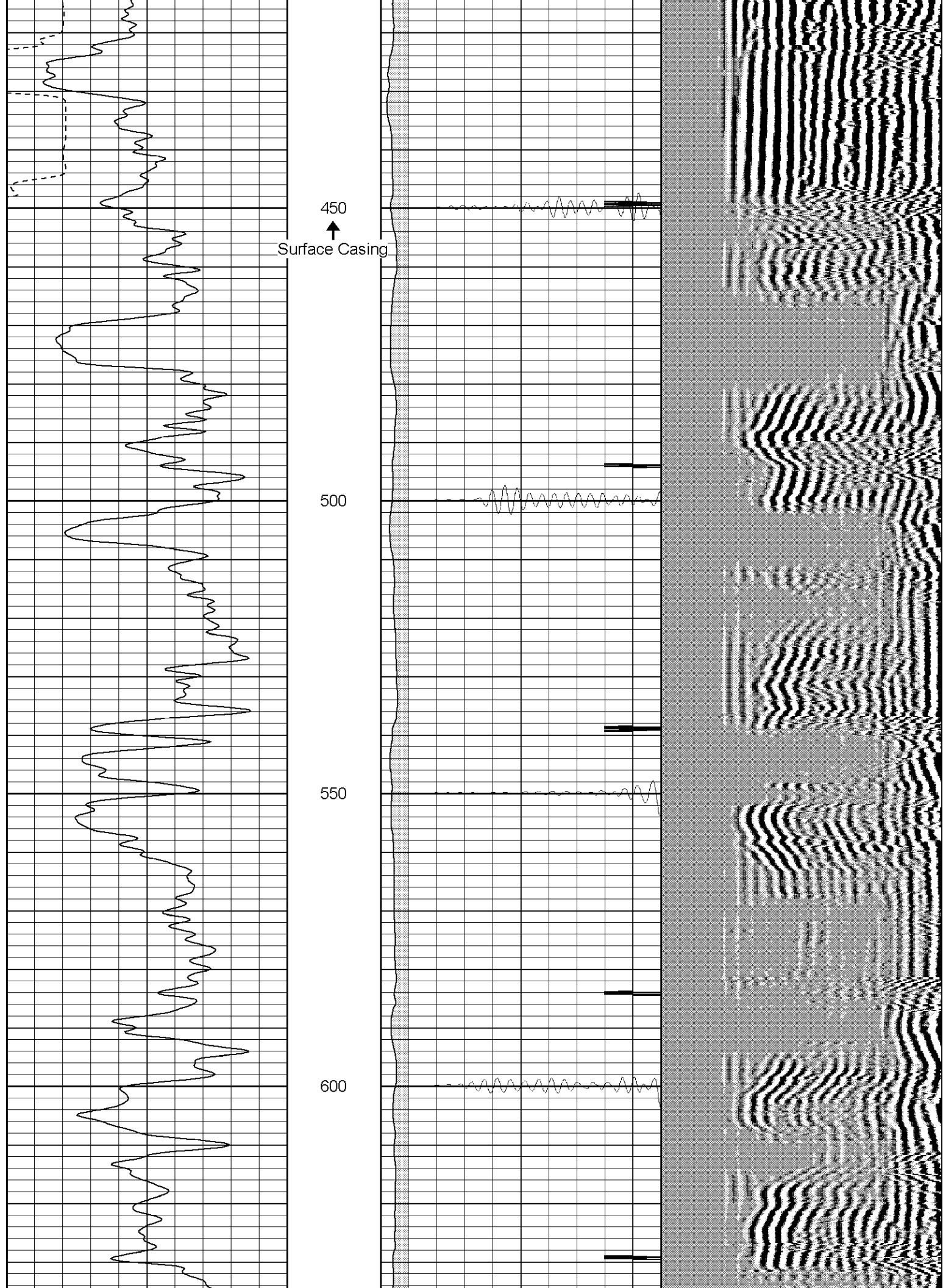
250

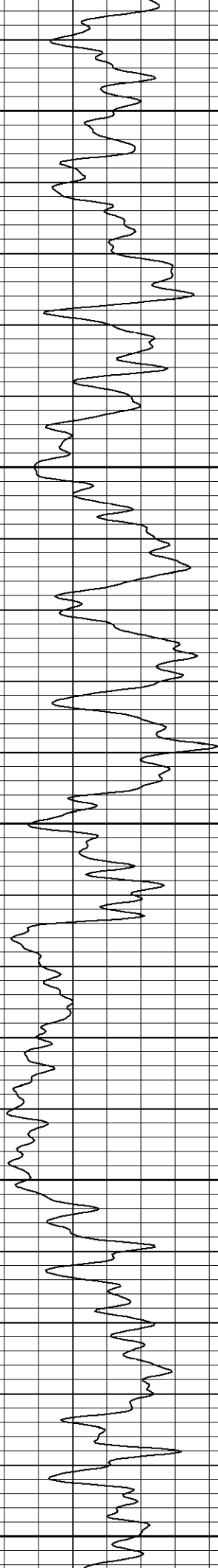
300

350

400







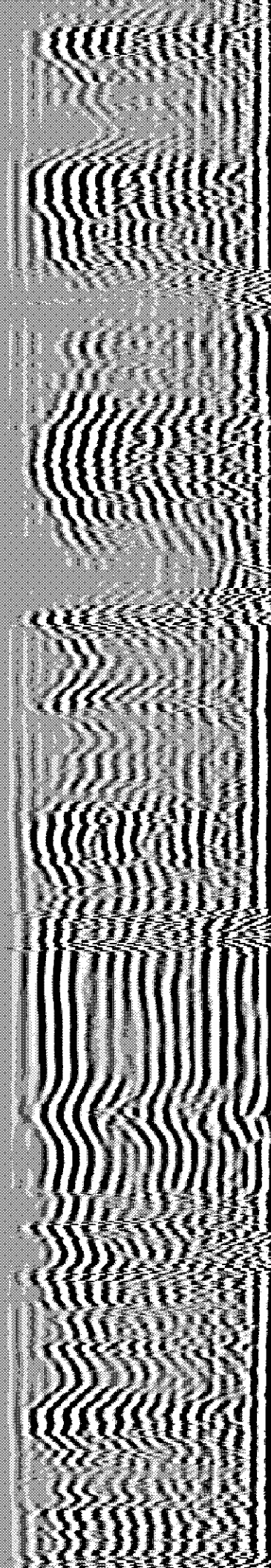
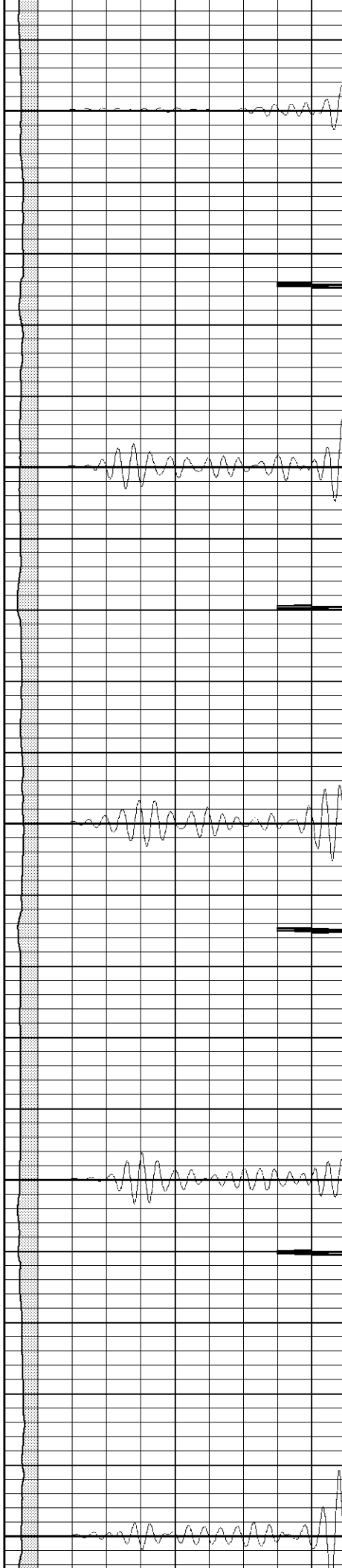
650

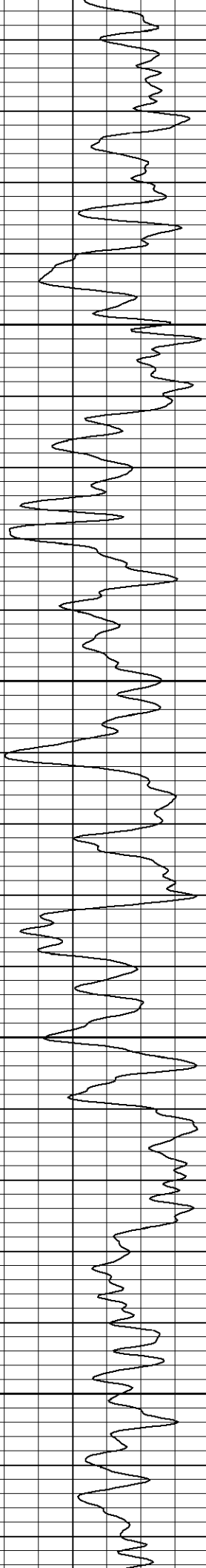
700

750

800

850



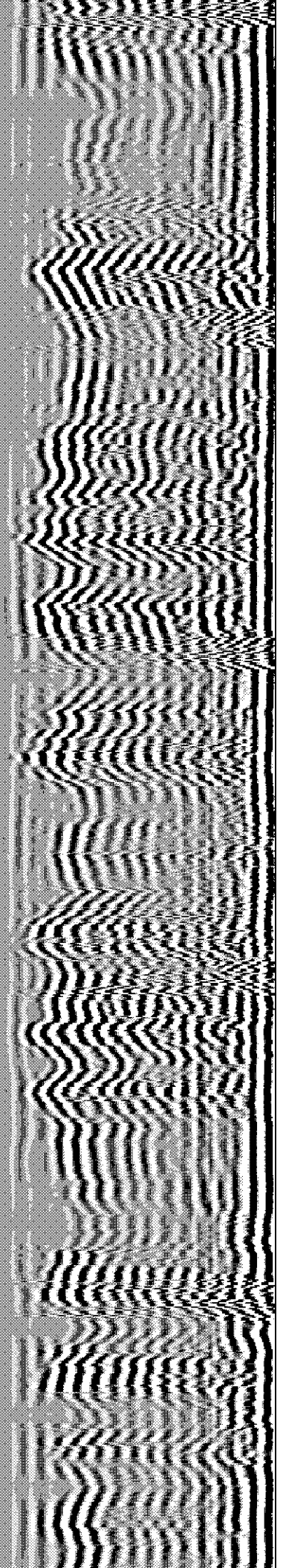
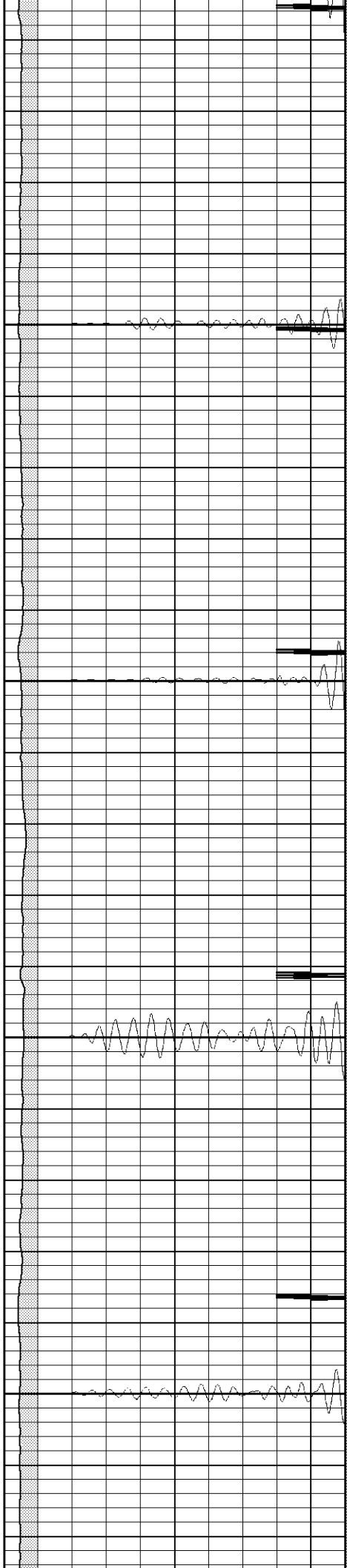


900

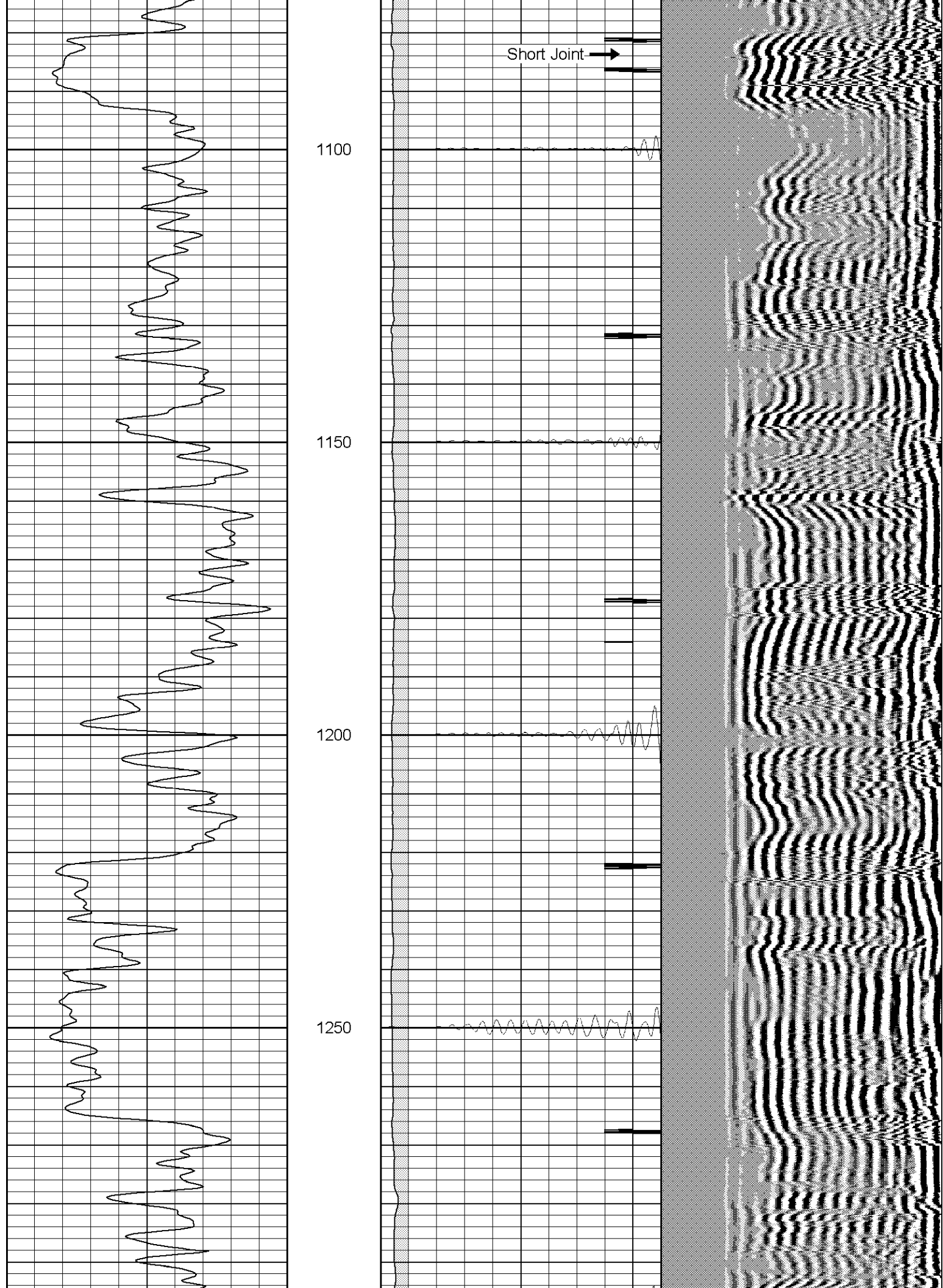
950

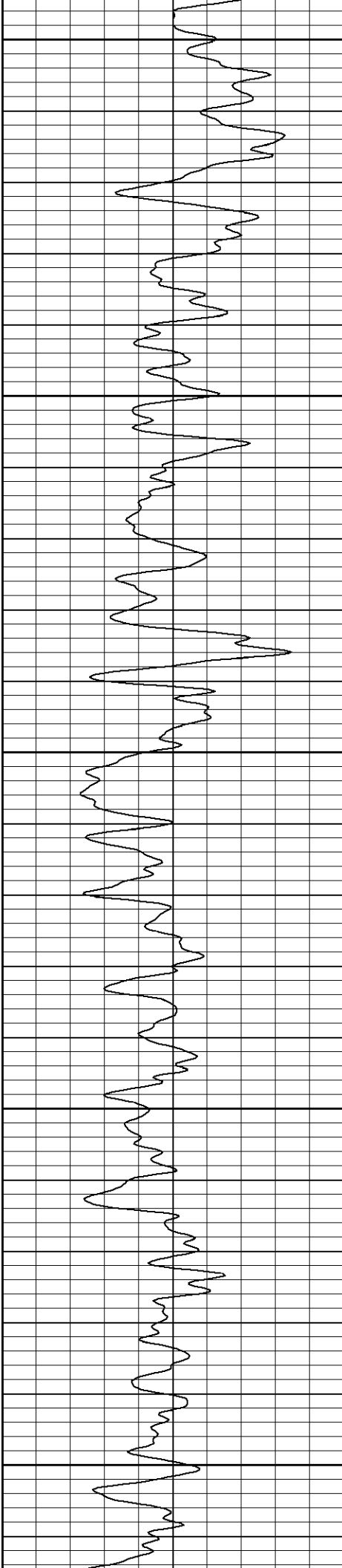
1000

1050









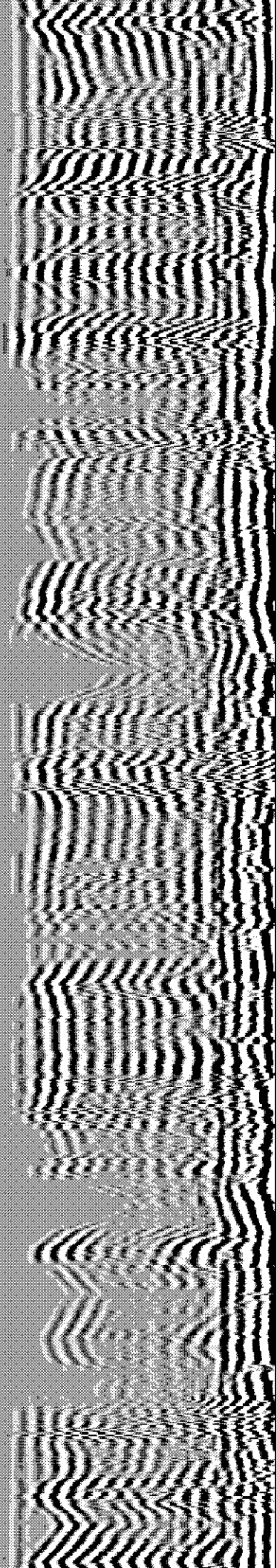
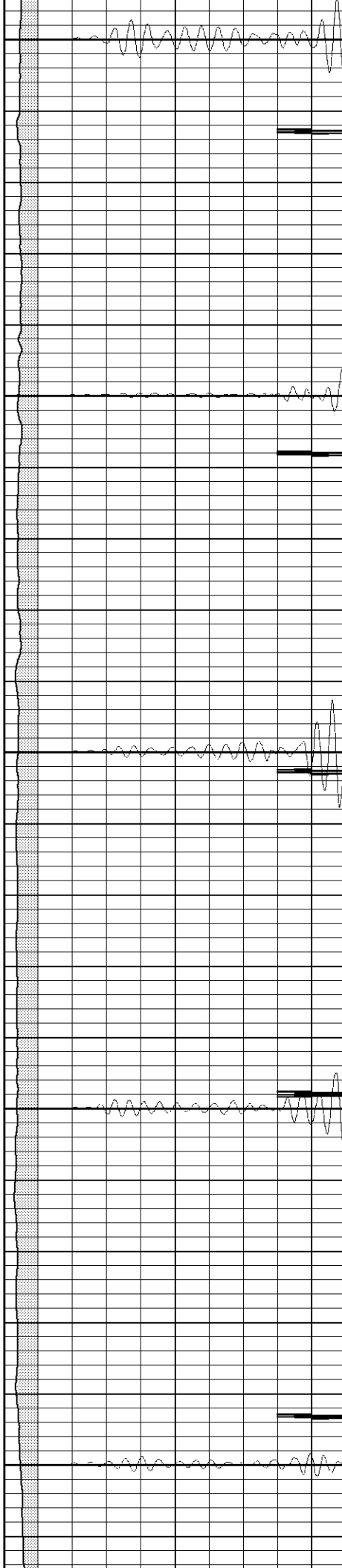
1300

1350

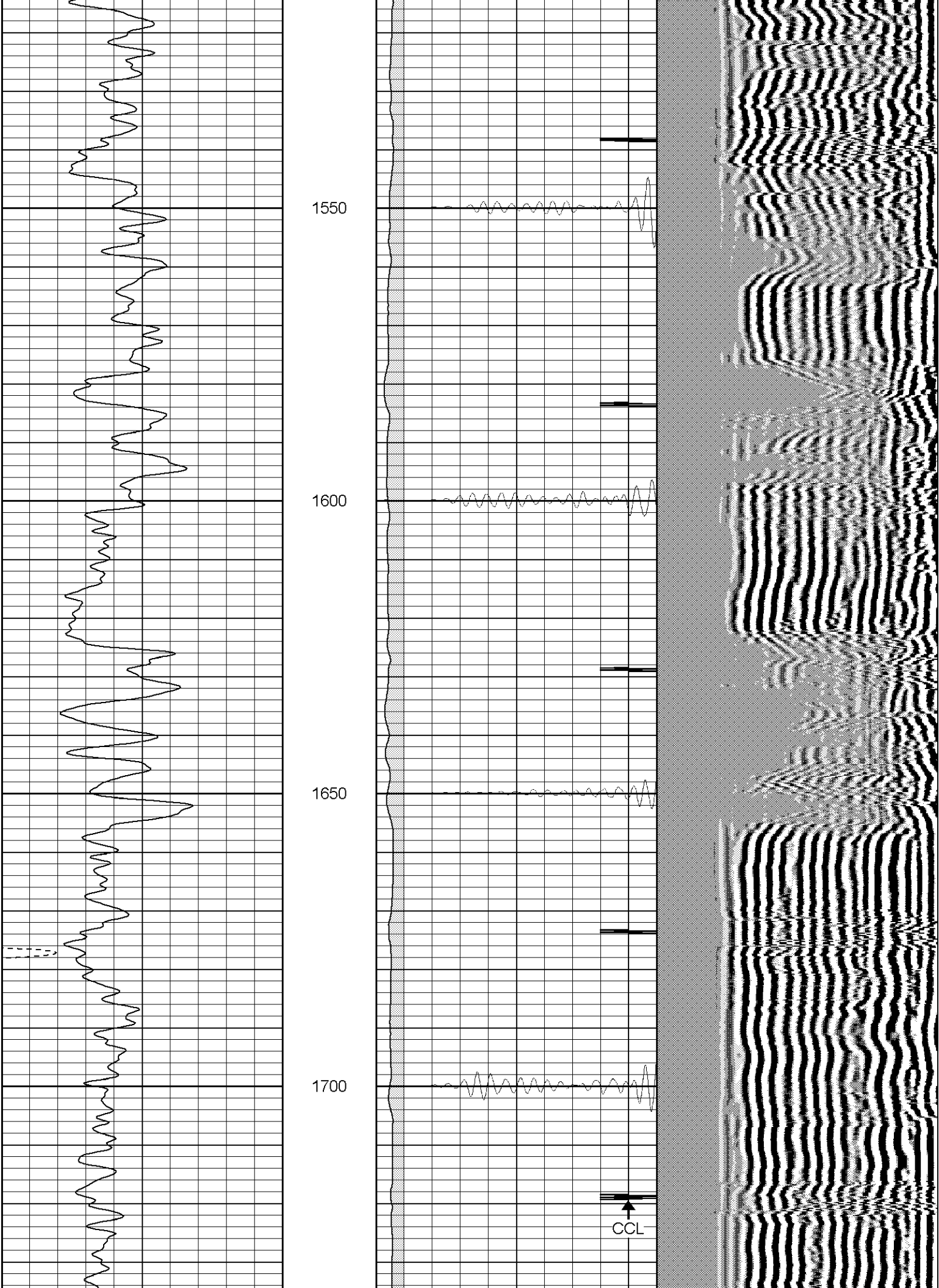
1400

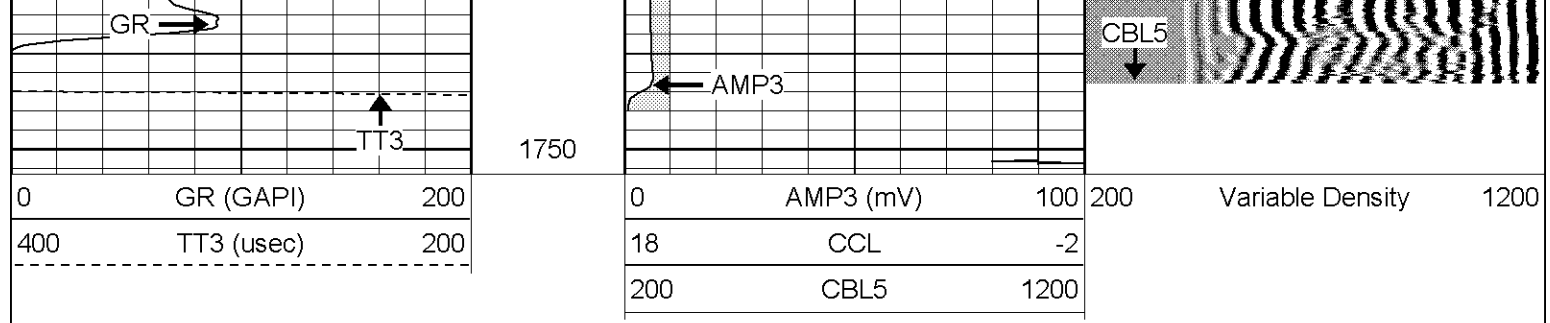
1450

1500







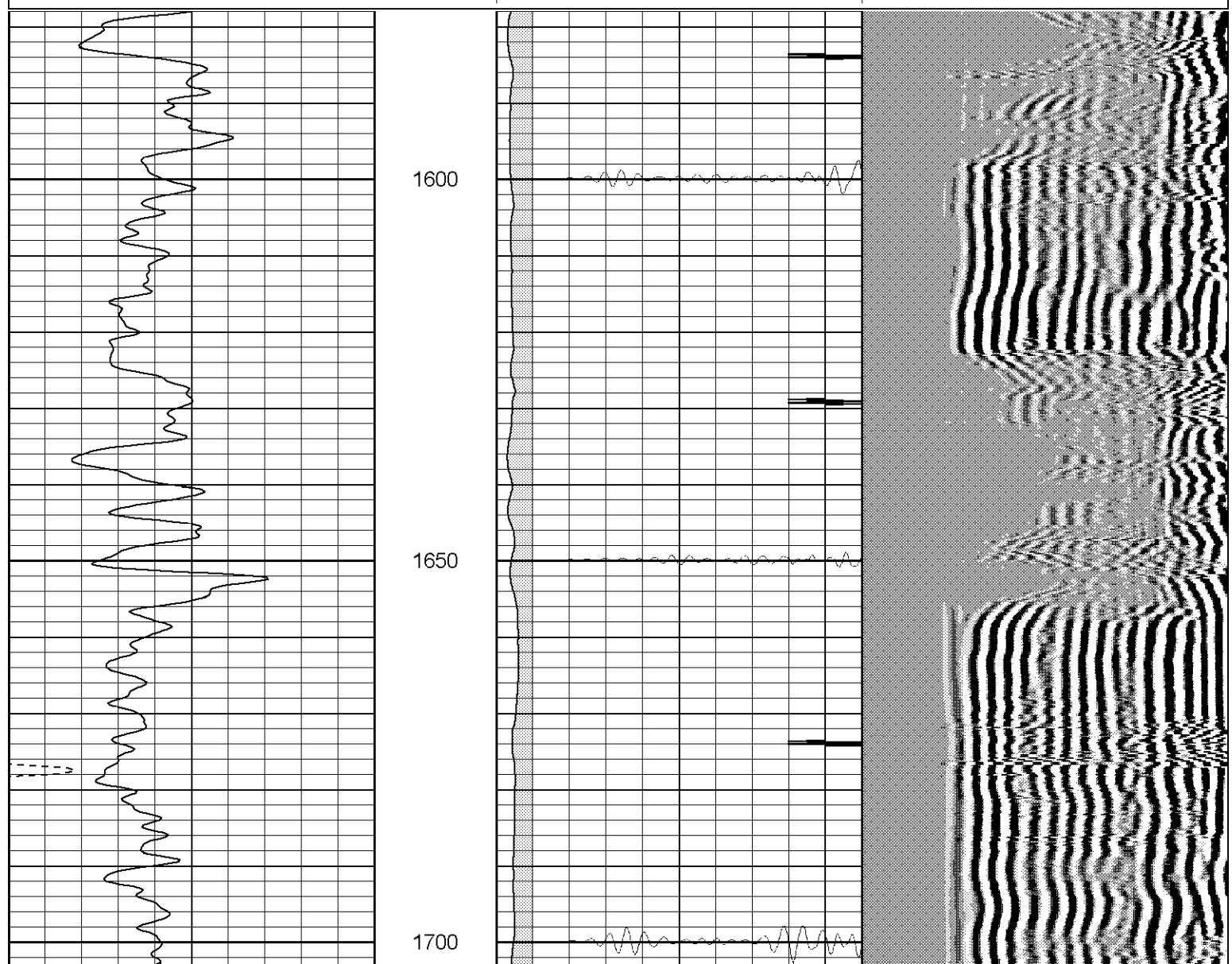
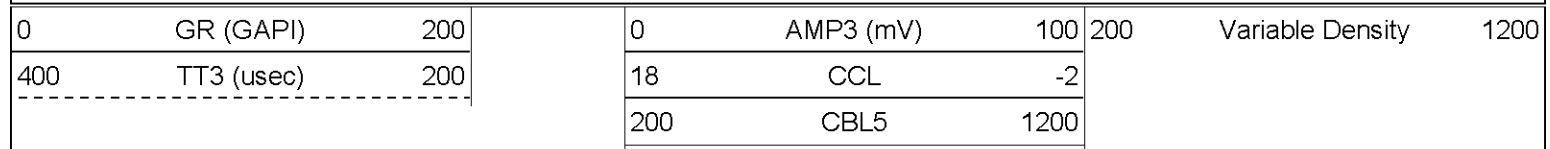


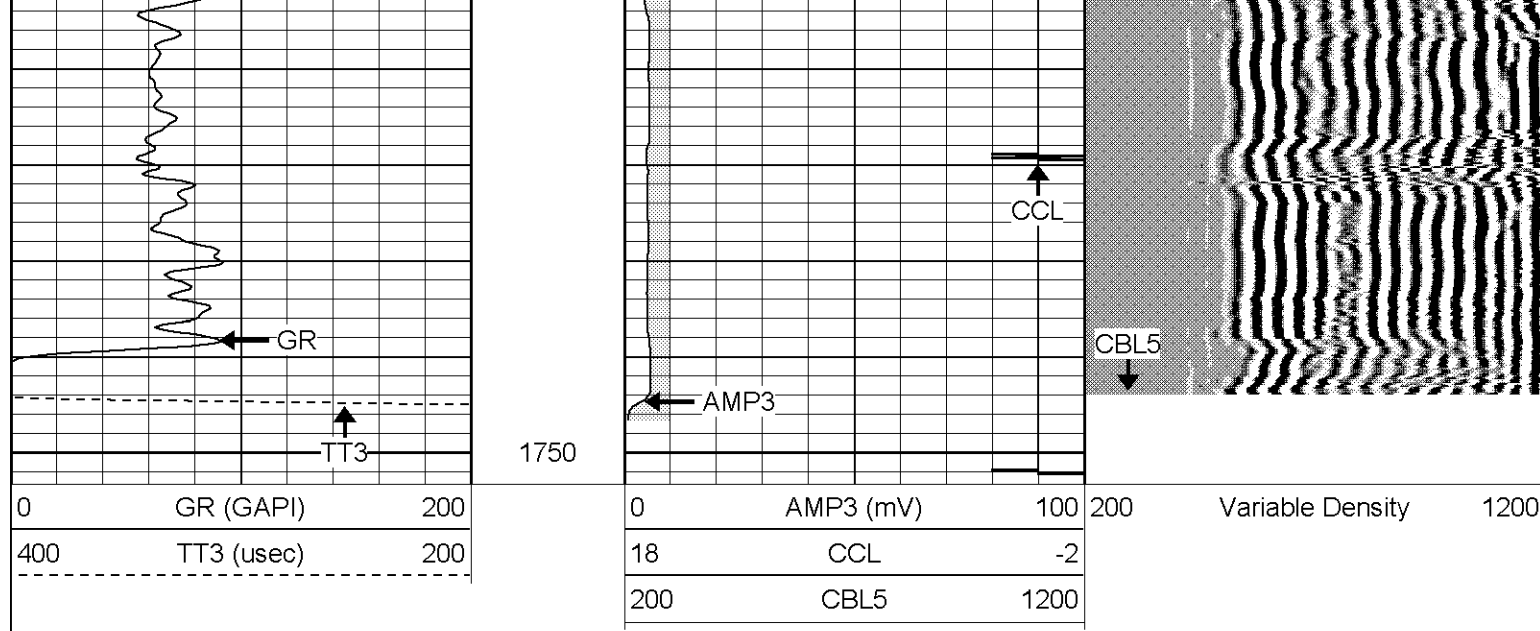


**SUPERIOR**  
Black Lick, Pa.  
Mercer, Pa.  
Wooster, Oh.  
Cleveland, Ok.  
Trinidad, Co.

# Repeat Section (0PSI)

Database File: ge2813040408b .db  
 Dataset Pathname: pass1.1  
 Presentation Format: cblrt  
 Dataset Creation: Fri Apr 04 09:49:13 2008 by Calc Open-Cased 070814  
 Charted by: Depth in Feet scaled 1:240





### Calibration Report

Database File: ge2813040408b .db  
 Dataset Pathname: pass1  
 Dataset Creation: Fri Apr 04 09:44:27 2008 by Log Open-Cased 070814

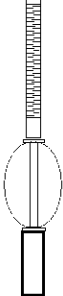
### Cement Bond Log Calibration Report

Serial Number:	Titan6		
Tool Model:	T6		
Performed:	Mon Mar 10 08:35:38 2008		
Depth:	206.576	ft	
Casing Diameter:	5.5	in	
	3' Spacing	5' Spacing	
Signal Zero:	0	0	mV
Calibrated Amplitude:	85	85	mV
Reading at Signal Zero:	0.0194092	0	V
Reading in Free Pipe:	1.45	1.2	V
Gain:	59.416	70.8333	
Offset:	1	0	

### Gamma Ray Calibration Report

Serial Number:	Titan6	
Tool Model:	T6	
Performed:	Sat Mar 08 08:36:13 2008	
Calibrator Value:	0.0	GAPI
Background Reading:	1.0	cps
Calibrator Reading:	0.0	cps
Sensitivity:	1.1000	GAPI/cps

Sensor	Offset (ft)	Schematic	Description	Len (ft)	OD (in)	Wt (lb)
GR	13.64		CHD-None (0)	0.75	1.50	5.00
			GR-T6 (Titan6)	2.52	2.25	25.00
WVFS	0.40					

WVF5	9.49		CBL-T6 (Titan6)	7.23	2.25	110.00
WVF3	8.49		CENT-X (2)	3.00	1.69	25.00
			CCL-T6long (Titan6long)	2.15	2.75	15.00
CCL	0.81					
Dataset: ge2813040408b .db: field/well/run1/pass1						
Total Length: 15.66 ft						
Total Weight: 180.00 lb						
O.D. 2.75 in						