



SUPERIOR
Black Lick, Pa.
Mercer, Pa.
Wooster, Oh.
Cleveland, Ok.
Trinidad, Co.

DUAL INDUCTION LOG

Company XTO Energy Inc.
Well Golden Eagle 28-13
Field Purgatoire River
County Las Animas State Colorado

Location: API # : 05 071 09494 00

1291' FSL & 785' FWL

SEC 28 TWP 33S RGE 67W

Permanent Datum	Ground Level	Elevation	7240'
Log Measured From	Ground Level		
Drilling Measured From	Ground Level		

Other Services
CDL
NEUTRON
Elevation
K.B. -----
D.F. -----
G.L. 7240'

Date 3-27-08

Run Number One

Depth Driller 1880'

Depth Logger 1890'

Bottom Logged Interval 1888'

Top Log Interval Surface Casing

Casing Driller 8 5/8" @ 447'

Casing Logger 452'

Bit Size 7 7/8"

Type Fluid in Hole Water

Density / Viscosity ///

pH / Fluid Loss ///

Source of Sample ///

Rm @ Meas. Temp ///

Rmf @ Meas. Temp ///

Rmc @ Meas. Temp ///

Source of Rmf / Rmc ///

Rm @ BHT ///

Time Circulation Stopped 9:00 A.M.

Time Logger on Bottom 10:45 A.M.

Maximum Recorded Temperature 100 DEG F

Equipment Number T697

Location Trinidad

Recorded By J. Cappellucci

Witnessed By Mr. Dalton King

<<< Fold Here >>>

All interpretations are opinions based on inferences from electrical or other measurements and we cannot and do not guarantee the accuracy or correctness of any interpretation, and we shall not, except in the case of gross or willful negligence on our part, be liable or responsible for any loss, costs, damages, or expenses incurred or sustained by anyone resulting from any interpretation made by any of our officers, agents or employees. These interpretations are also subject to our general terms and conditions set out in our current Price Schedule.

Comments

Well Directions:

Second Bosque Entrance, at Railroad Tracks take left, follow road stay right up hill, take left at 3 way, dead end on location.

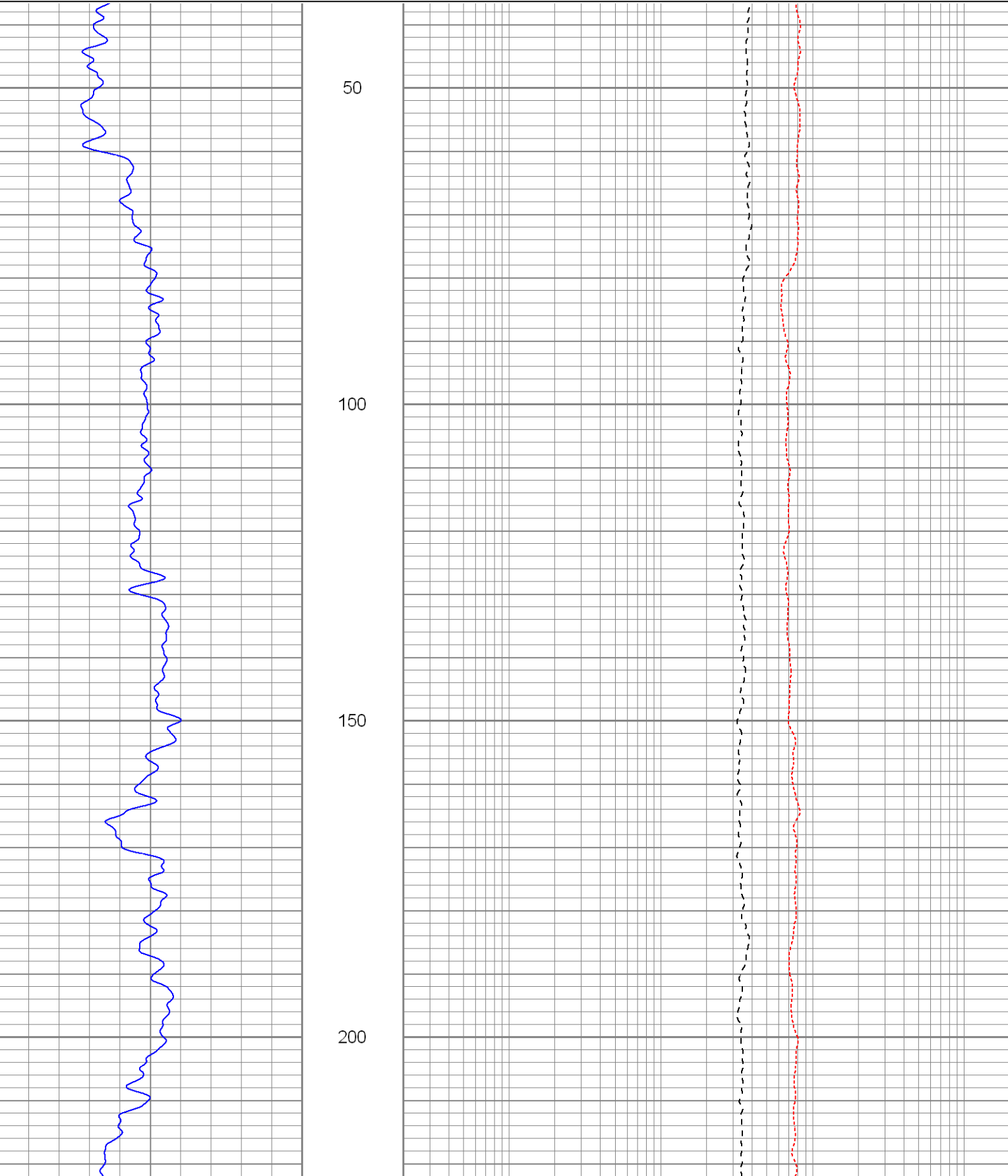


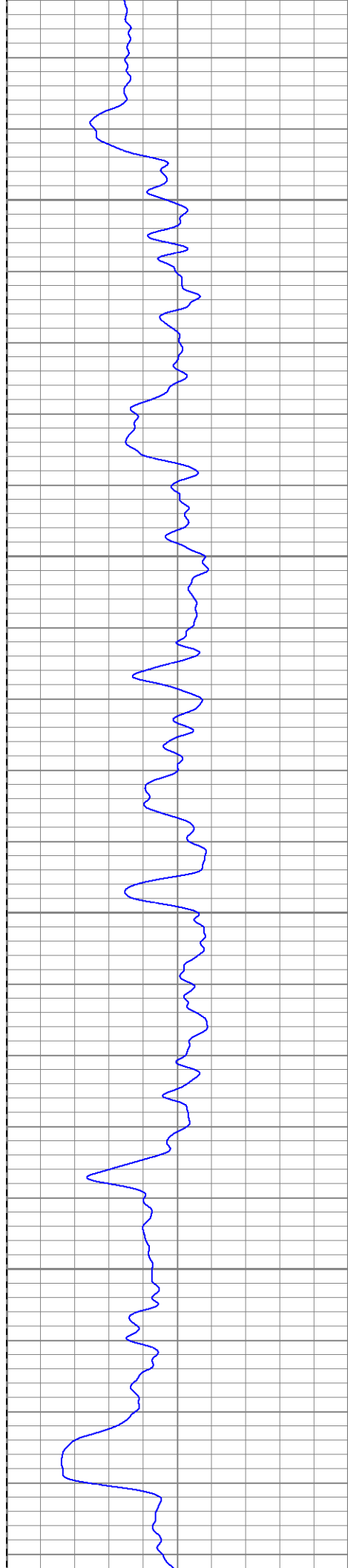
SUPERIOR
Black Lick, Pa.
Mercer, Pa.
Wooster, Oh.
Cleveland, Ok.
Trinidad, Co.

Main Pass

Database File: xtoge2813.db
Dataset Pathname: pass2.1
Presentation Format: dil
Dataset Creation: Thu Mar 27 12:14:54 2008 by Calc Open-Cased 070814
Charted by: Depth in Feet scaled 1:240

0	GR (GAPI)	200	0.2	RILM (Ohm-m)	2000
-200	SP (mV)	0	0.2	RILD (Ohm-m)	2000
			0.2	RLL3 (Ohm-m)	2000



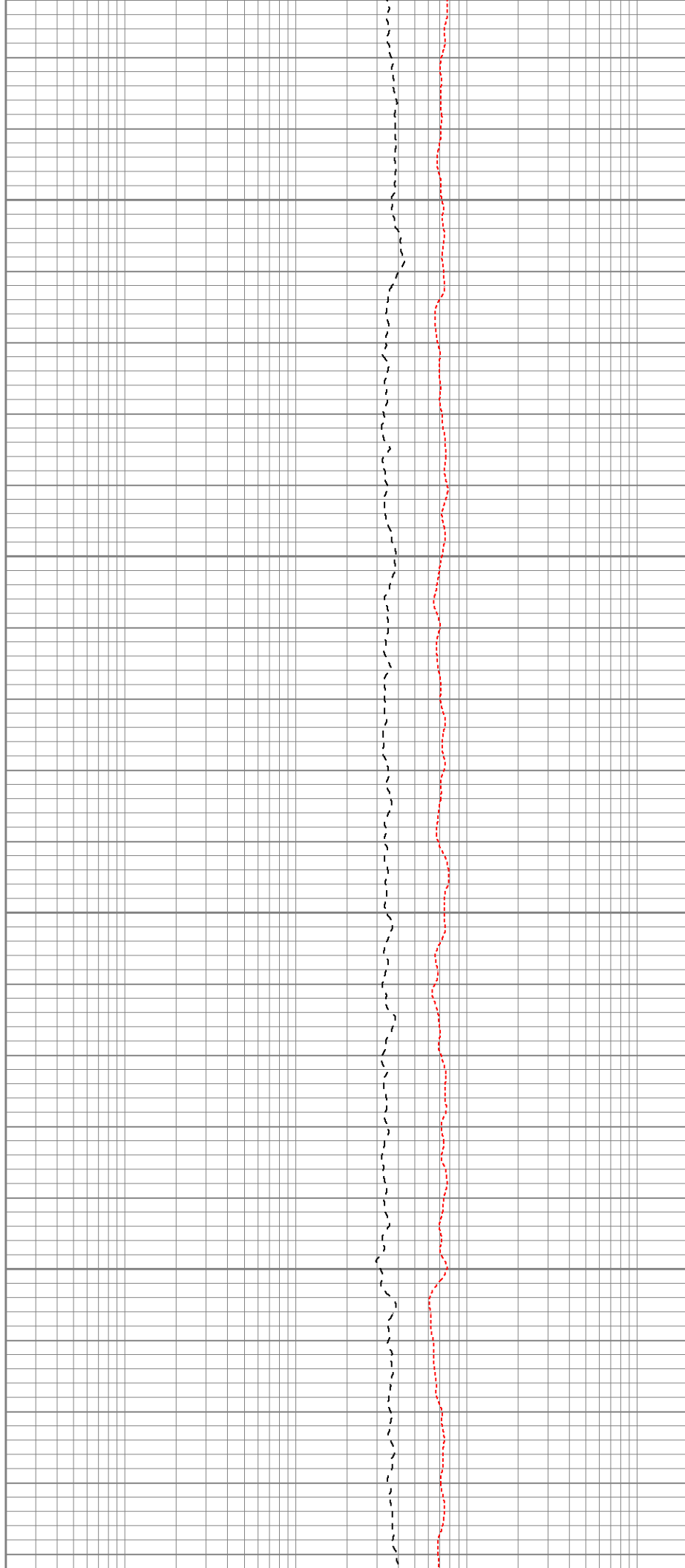


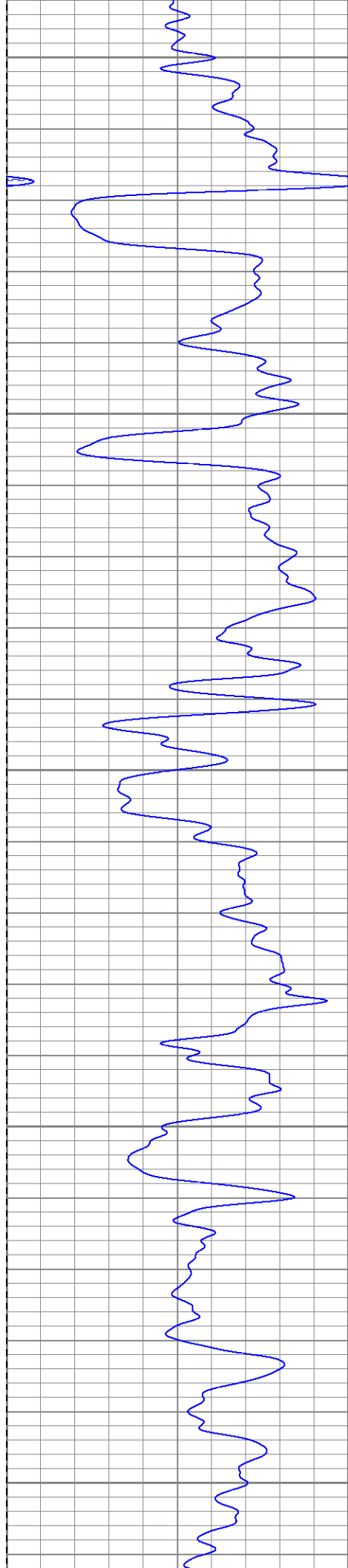
250

300

350

400





Surface Casing
450

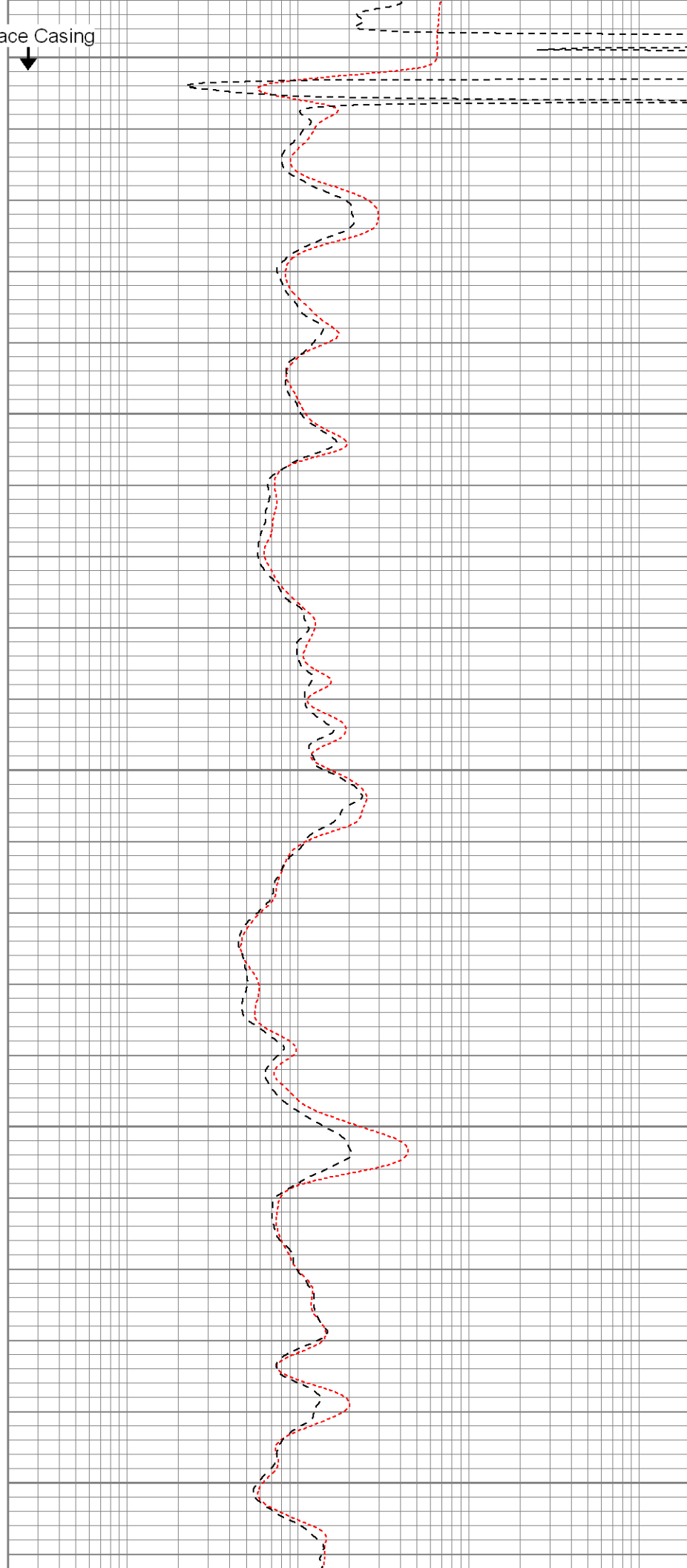


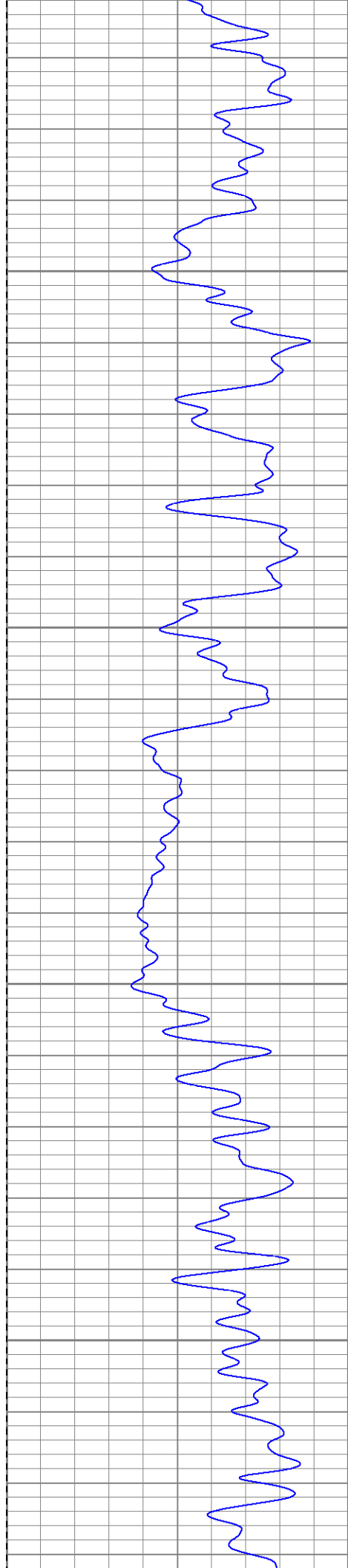
500

550

600

650



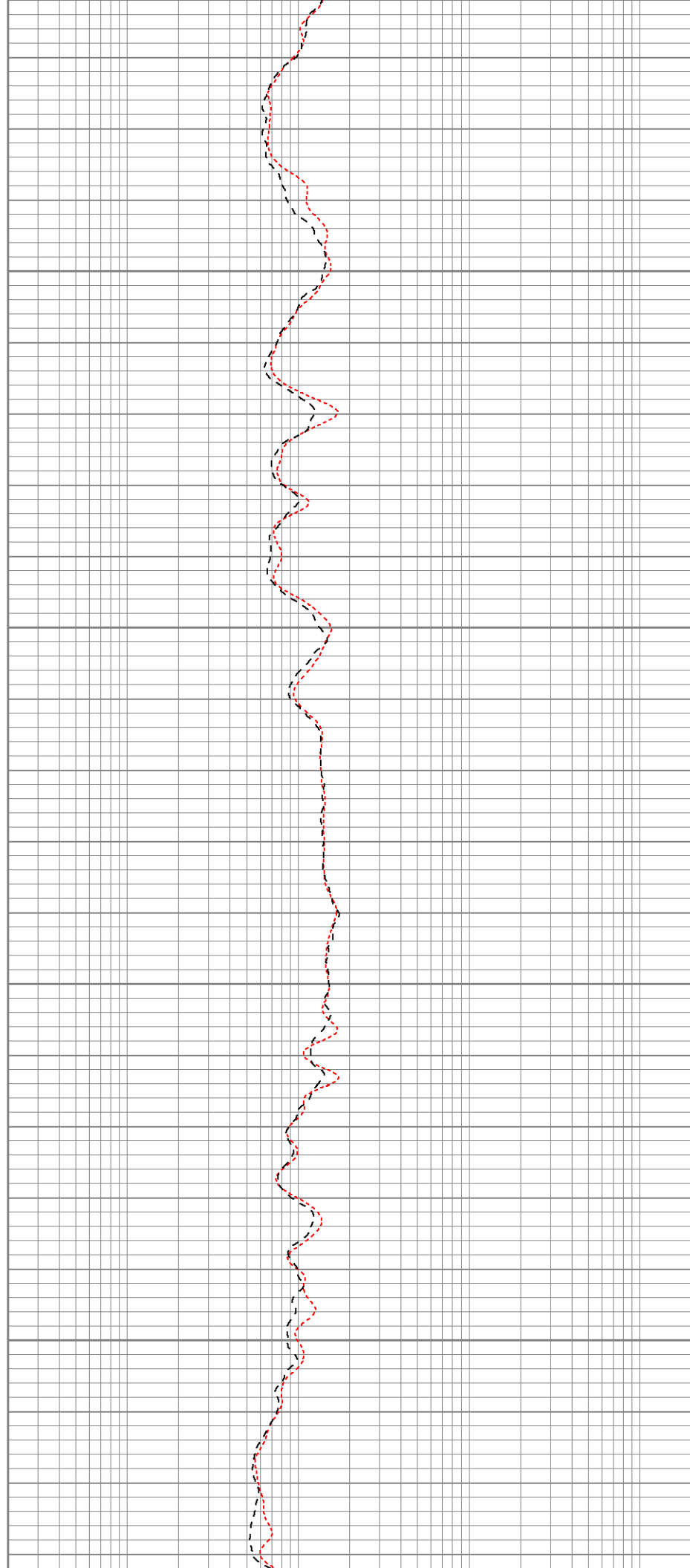


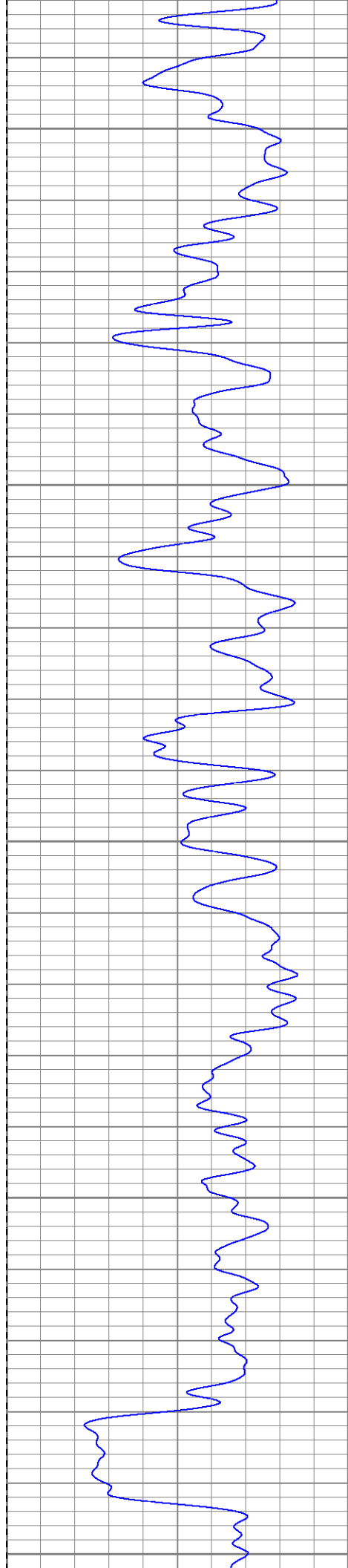
700

750

800

850





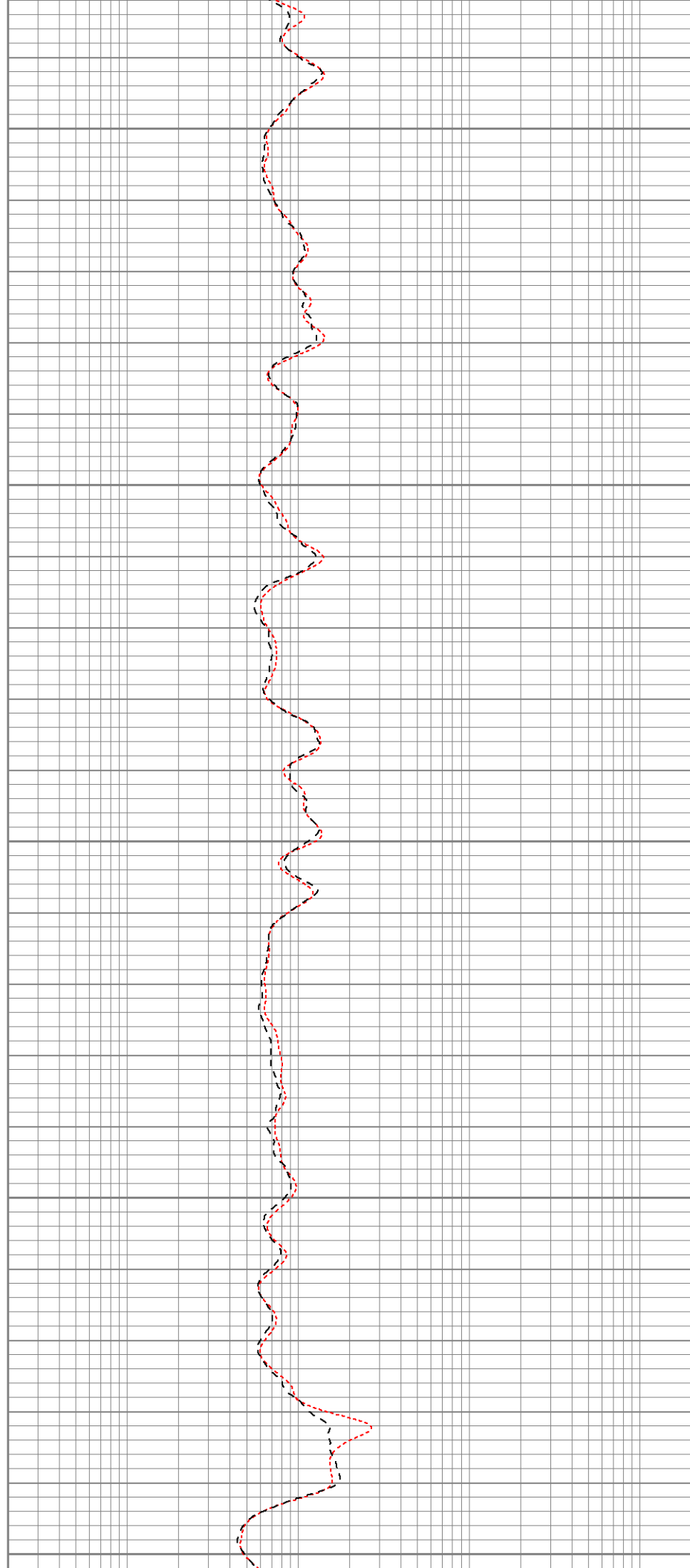
900

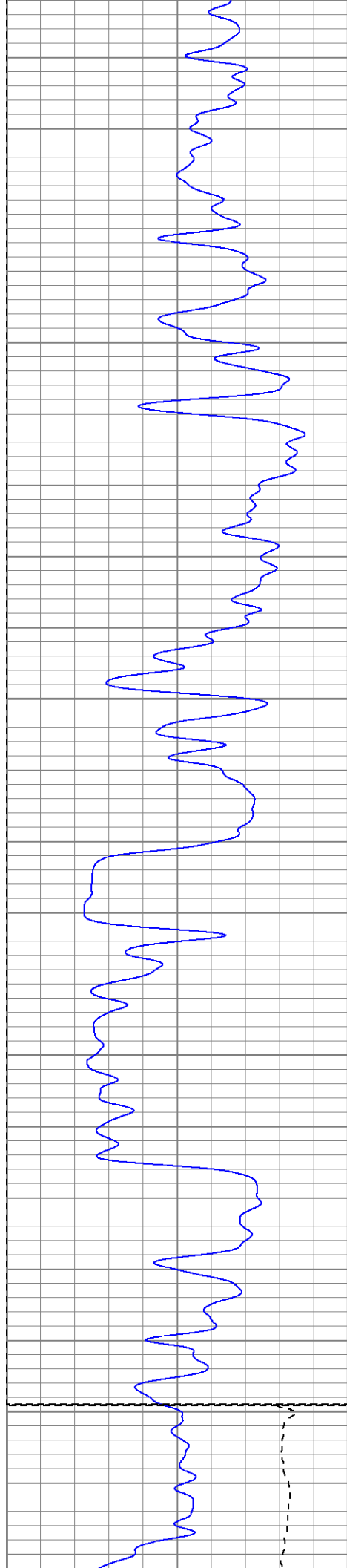
950

1000

1050

1100





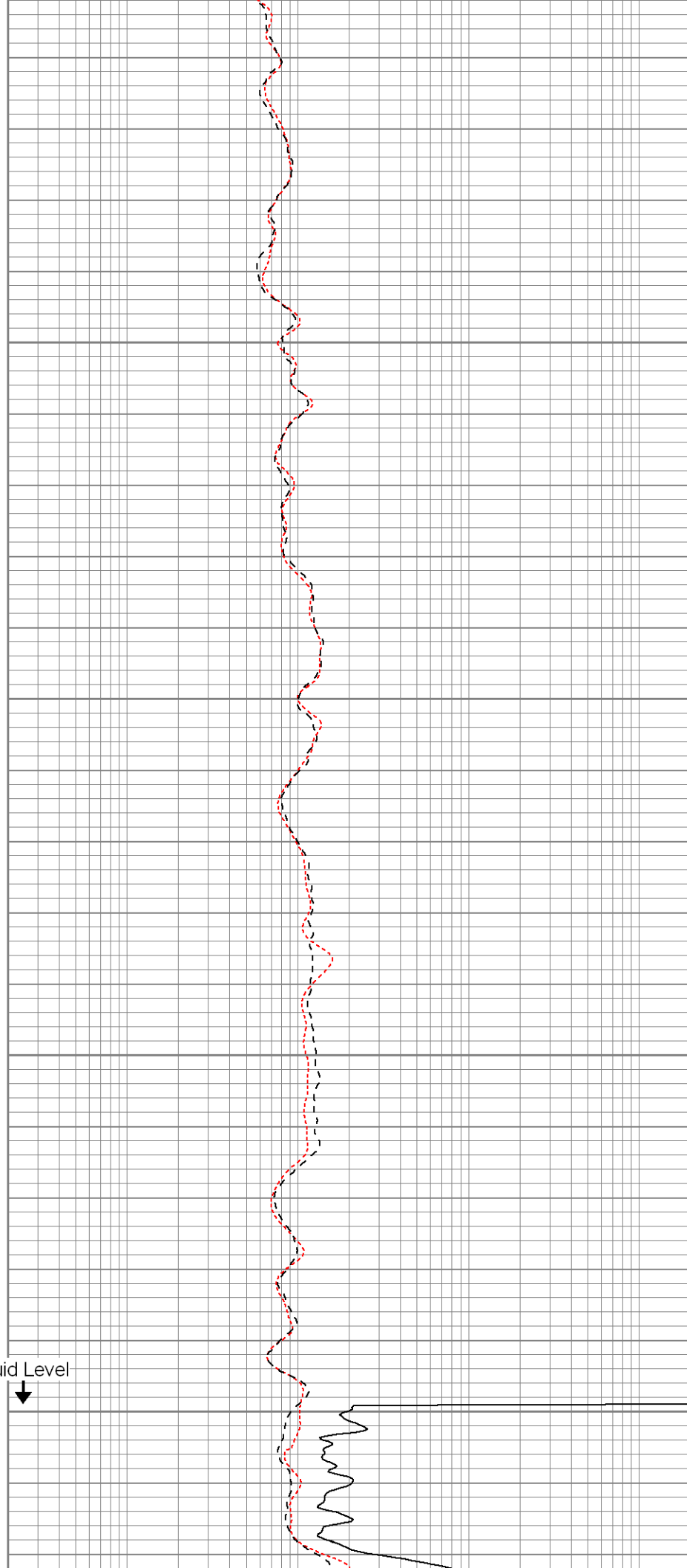
1150

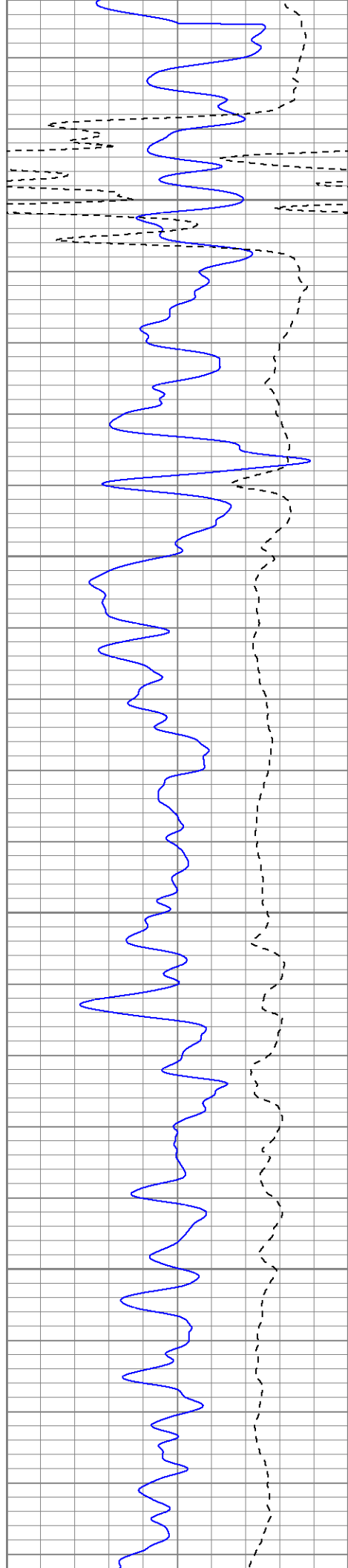
1200

1250

1300

Fluid Level



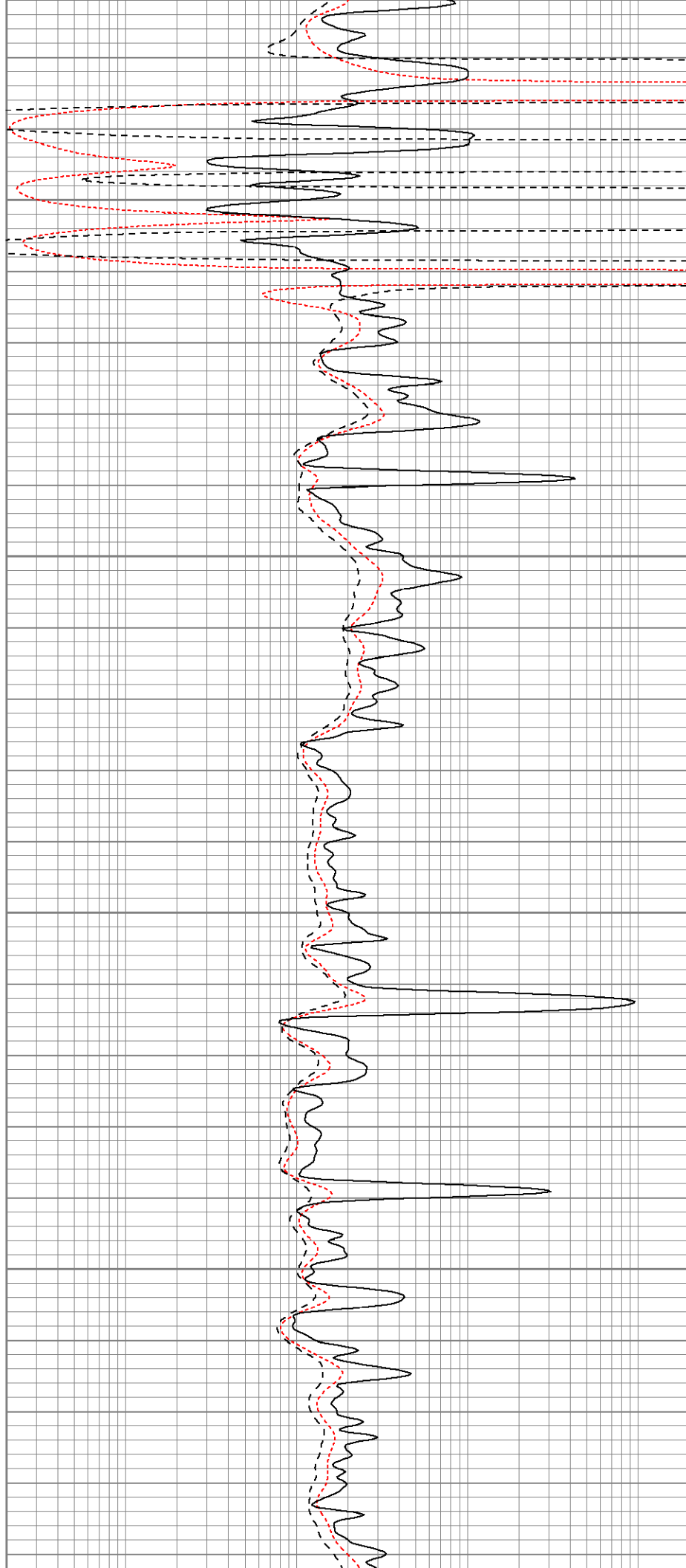


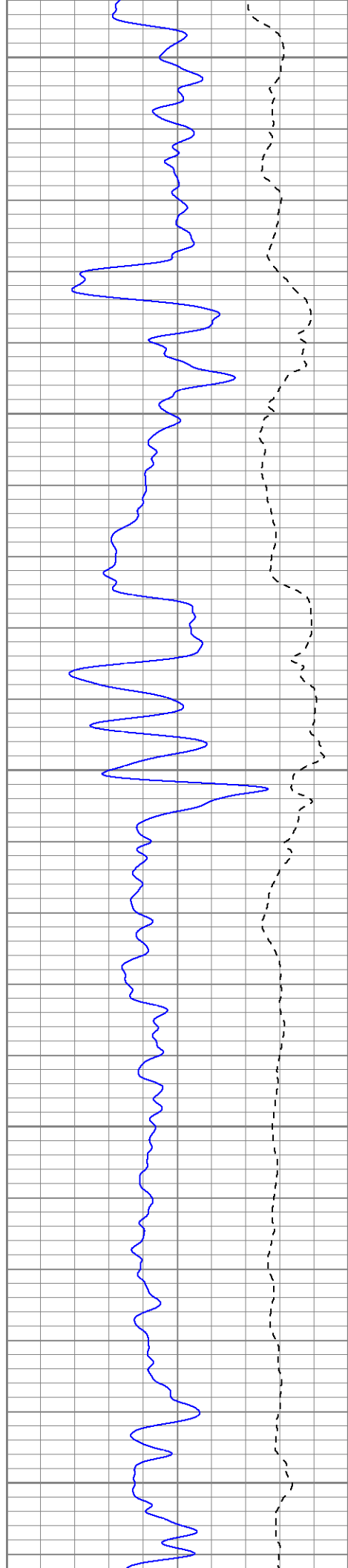
1350

1400

1450

1500





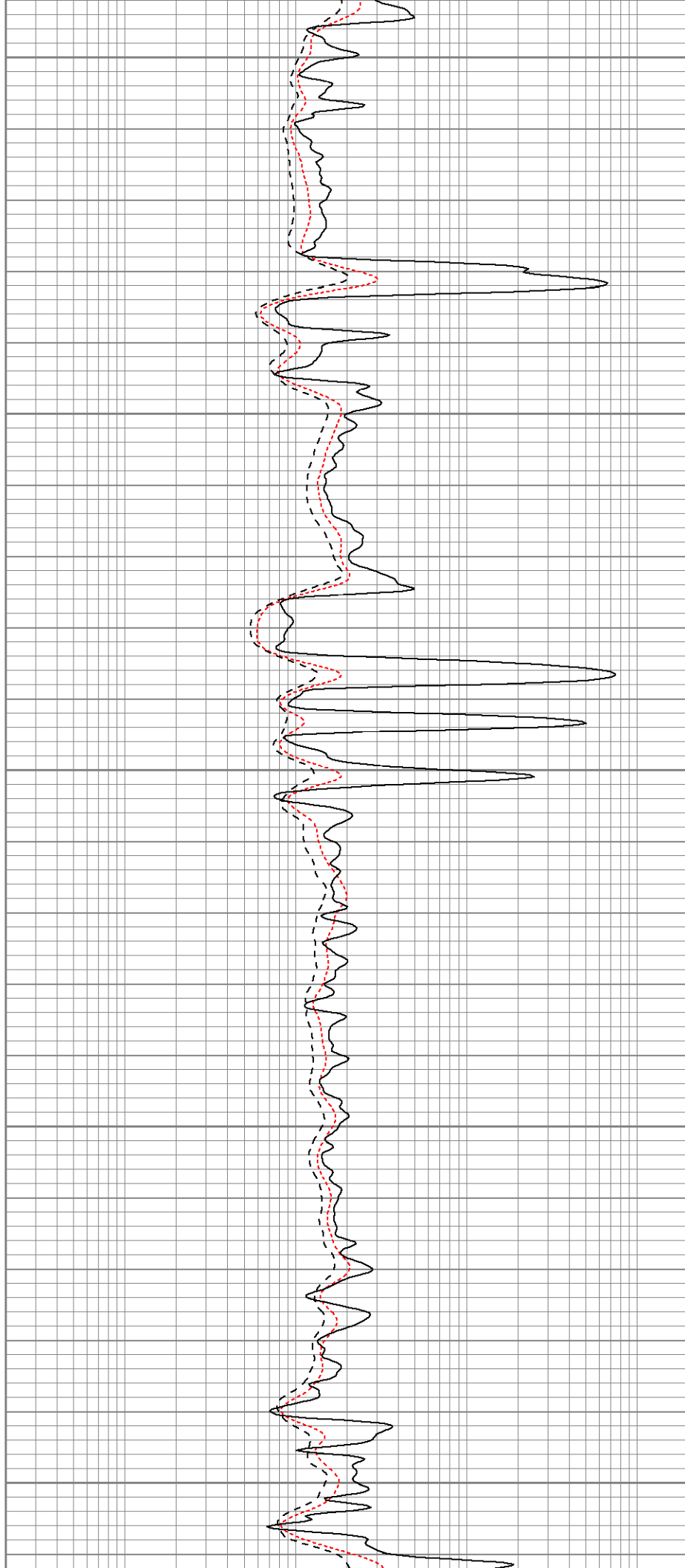
1550

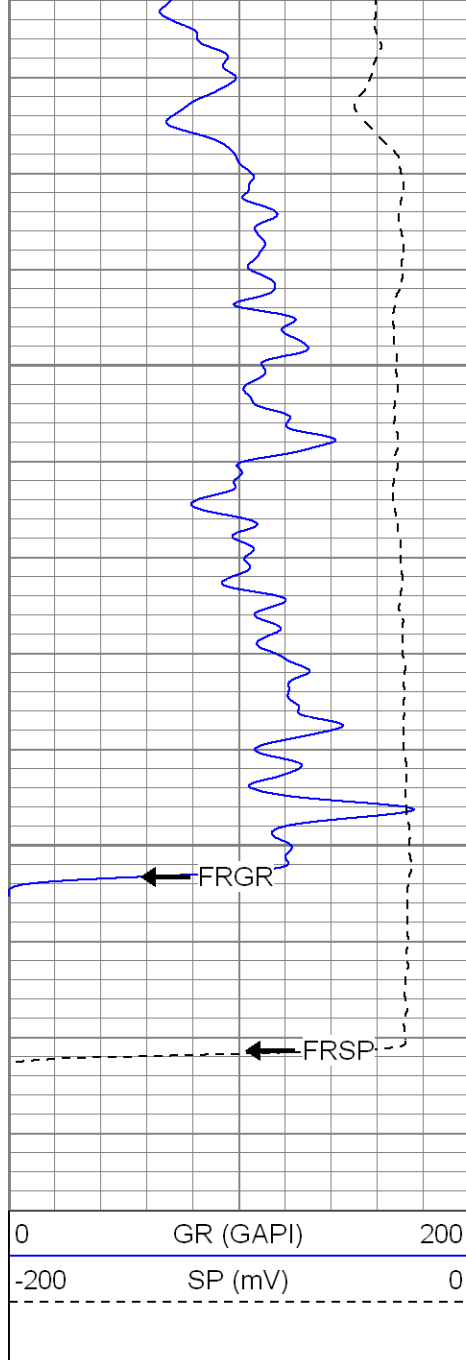
1600

1650

1700

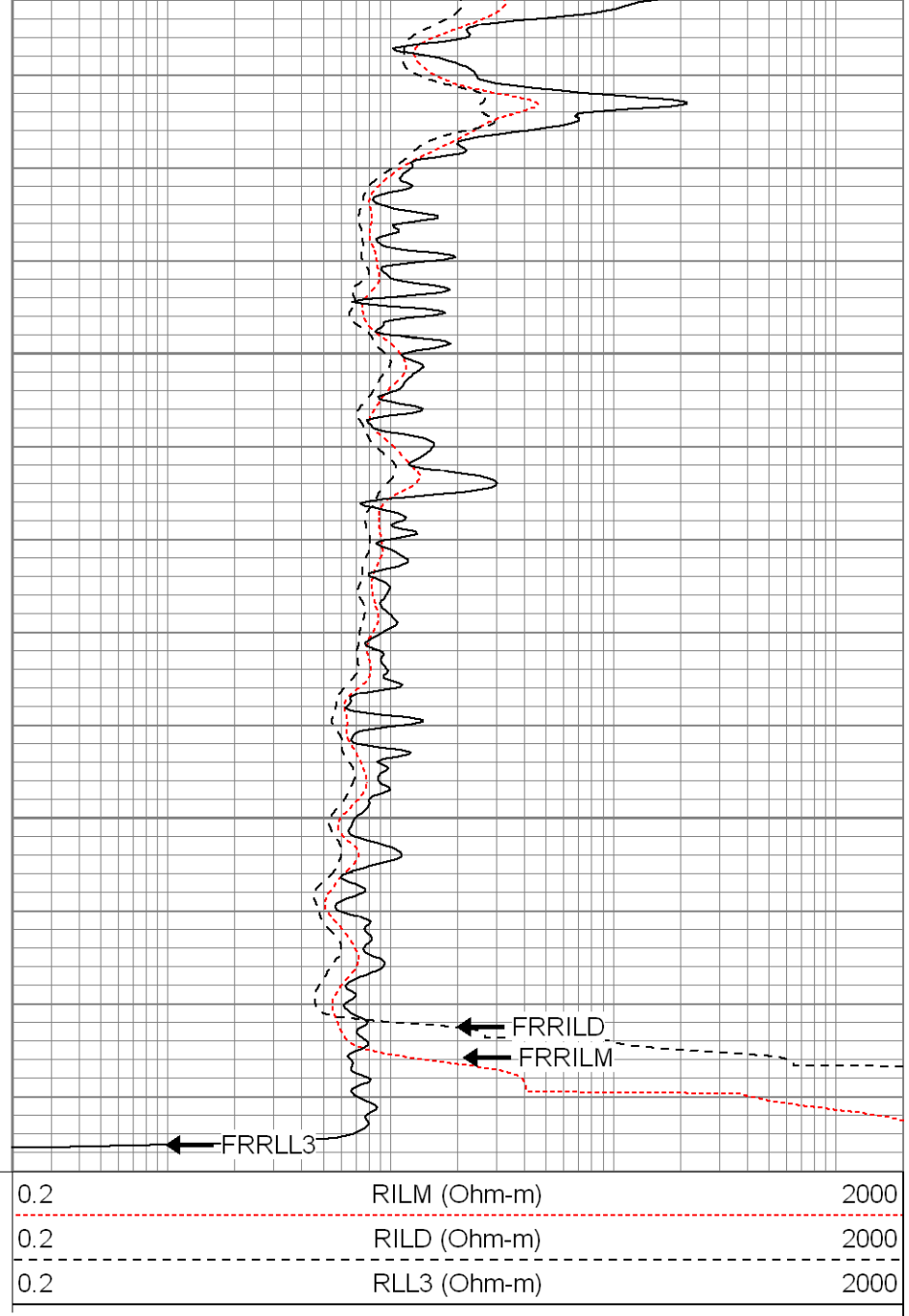
1750





1800

1850



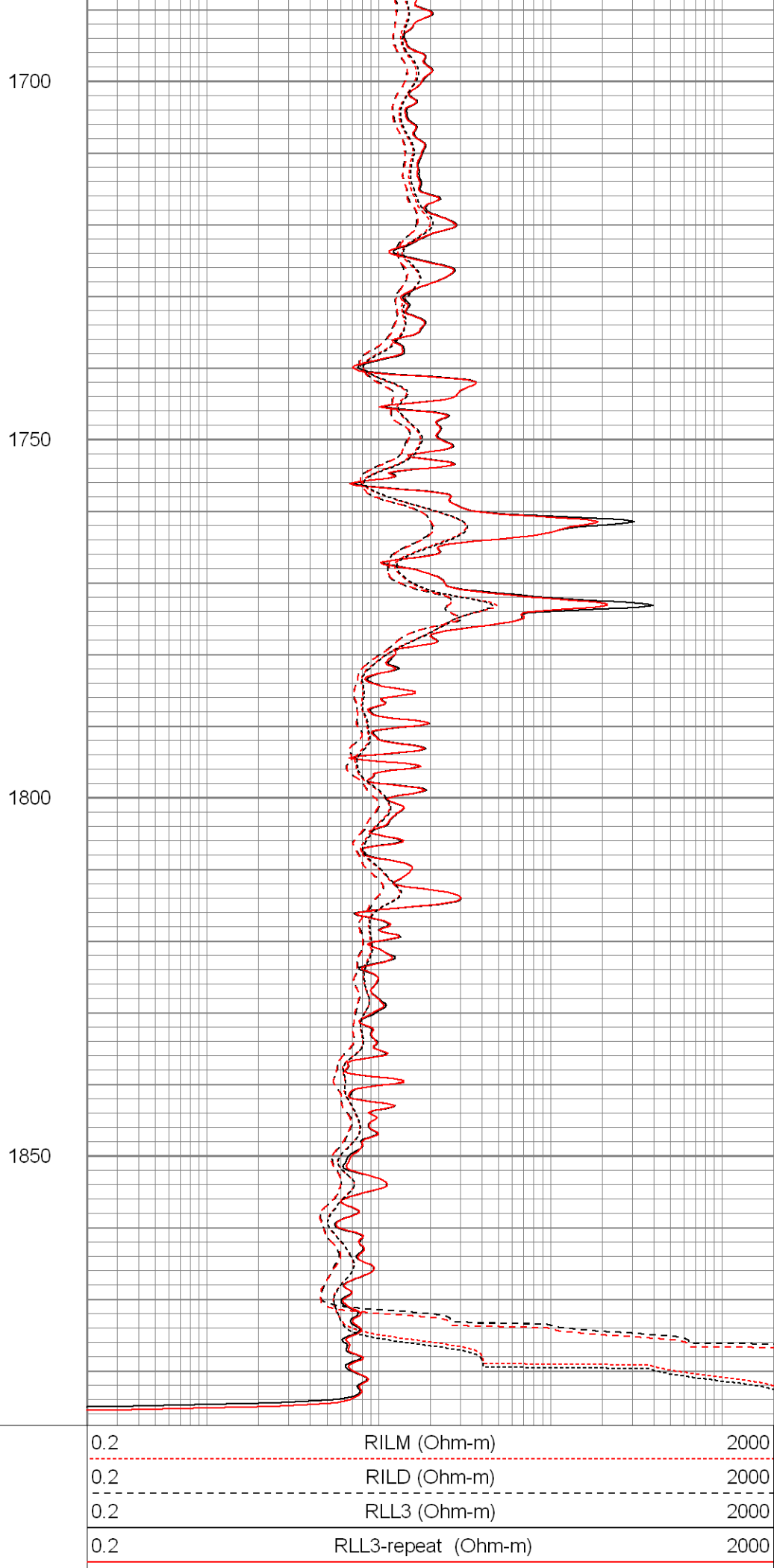
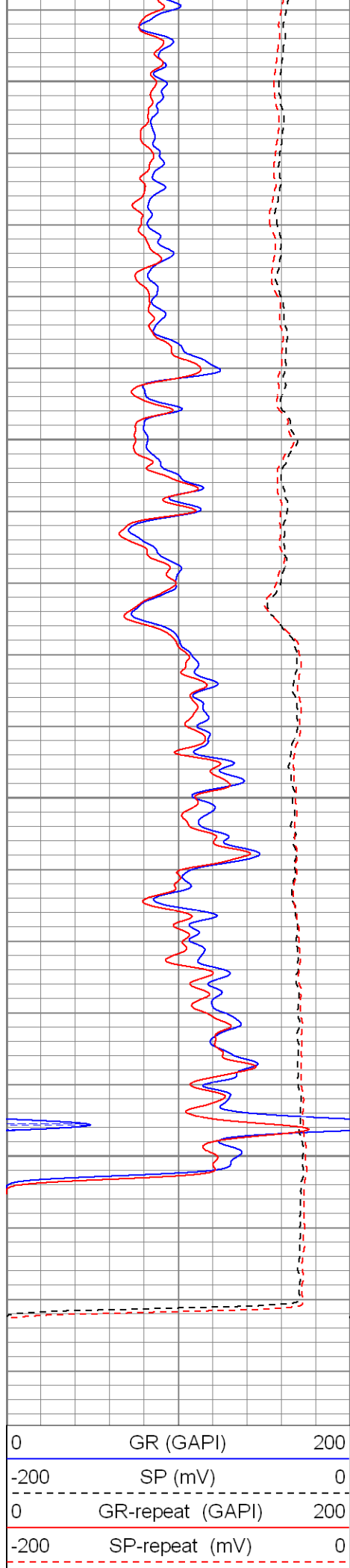
SUPERIOR
 Black Lick, Pa.
 Mercer, Pa.
 Wooster, Oh.
 Cleveland, Ok.
 Trinidad, Co.

Repeat Pass

Database File: xtoge2813.db
 Dataset Pathname: pass1.1
 Presentation Format: dil
 Dataset Creation: Thu Mar 27 11:34:03 2008 by Calc Open-Cased 070814
 Charted by: Depth in Feet scaled 1:240

0	GR (GAPI)	200
-200	SP (mV)	0
0	GR-repeat (GAPI)	200
-200	SP-repeat (mV)	0

0.2	RILM (Ohm-m)	2000
0.2	RILD (Ohm-m)	2000
0.2	RLL3 (Ohm-m)	2000
0.2	RLL3-repeat (Ohm-m)	2000
0.2	RILM-repeat (Ohm-m)	2000
0.2	RILD-repeat (Ohm-m)	2000



	0.2	RILM-repeat (Ohm-m)	2000
	0.2	RILD-repeat (Ohm-m)	2000

Calibration Report	
Database File:	xtoge2813.db
Dataset Pathname:	pass1
Dataset Creation:	Thu Mar 27 10:47:51 2008 by Log Open-Cased 070814

Dual Induction Calibration Report

Serial-Model:	20017-P
Surface Cal Performed:	Fri Mar 21 16:59:52 2008
Downhole Cal Performed:	Fri Mar 21 17:00:29 2008

Surface Calibration								
Loop:	Readings			References			Results	
	Air	Loop		Air	Loop		m	b
Deep	-0.002	0.657	V	0.000	500.000	mmho-m	758.526	1.560
Medium	-0.003	0.782	V	0.000	550.000	mmho-m	700.351	2.142
Internal:	Zero	Cal		Zero	Cal		m	b
Deep	-0.002	0.657	V	0.000	500.000	mmho-m	757.929	1.726
Medium	-0.003	0.780	V	0.000	500.000	mmho-m	638.777	2.035

Downhole Calibration								
Internal:	Readings			References			Results	
	Zero	Cal		Zero	Cal		m	b
Deep	-0.042	500.120	mmho-m	-0.167	500.227	mmho-m	1.000	-0.125
Medium	-0.239	549.337	mmho-m	-0.090	548.106	mmho-m	0.997	0.149
Shallow	0.047	4.993	V	10.000	1000.000	Ohm-m	124.000	2.000

Compensated Density Calibration Report	
--	--


Serial-Model:	2118-poilex
Source / Verifier:	/
Master Calibration Performed:	Mon Mar 17 09:00:21 2008

Master Calibration						
	Density			Far Detector	Near Detector	
Magnesium	1.710	g/cc		689.13	662.28	cps
Aluminum	2.590	g/cc		156.84	466.09	cps
Spine Angle = 76.65			Density/Spine Ratio = 0.578			
	Size			Reading		
Small Ring	8.50	in		4.33	V	
Large Ring	14.00	in		8.24	V	

Gamma Ray Calibration Report	
------------------------------	--

Serial Number:	2001
Tool Model:	OH
Performed:	Wed Mar 05 01:30:07 2008
Calibrator Value:	1.0
Calibrator:	GADP

Calibrator Value:	1.0	GAPI
Background Reading:	0.0	cps
Calibrator Reading:	1.0	cps
Sensitivity:	0.2500	GAPI/cps
Neutron Calibration Report		
Serial Number:	5145	
Tool Model:	G	
Performed:	Tue Mar 04 08:46:08 2008	
Calibrator Value:	1200	NAPI
Calibrator Reading:	1700	cps
Sensitivity:	0.705882	NAPI/cps

Sensor	Offset (ft)	Schematic	Description	Len (ft)	OD (in)	Wt (lb)
NEU	40.47		None	0.75	1.50	5.00
			NEU-G (5145) Gearhart Epithermal	5.65	3.50	85.00
GR	34.63		GR-OH (2001) 2001	3.56	3.25	40.00
LSD	26.46		CDL-poilex (2118)	8.83	4.00	275.00
DCAL	26.05					
SSD	25.88					
CILD	16.29		DIL-P (20017) Pengo	24.63	4.00	300.00
SP	16.29					
CILM	12.54					
RLL3	3.21					

Total Weight:	705.00 lb
O.D.	4.00 in