



SUPERIOR
WELL SERVICES
Black Lick, Pa.
Mercer, Pa.
Wooster, Oh.
Cleveland, Ok.
Trinidad, Co.

**CEMENT BOND
GAMMA RAY
1000 PSI**

Company XTO Energy Inc.
Well Golden Eagle 32-15
Field Purgatorie River
County Las Animas State CO

Location: API # : 05 071 09631 00

770' FSL & 1766' FEL

SEC 32 TWP 33 RGE 67W

Permanent Datum Ground level Elevation 7784'
Log Measured From Ground Level
Drilling Measured From Ground Level

Elevation
K.B. -----
D.F. -----
G.L. 7784'

Date 8/18/08

Run Number	One		
Depth Driller	2425'		
Depth Logger	2354'		
Bottom Logged Interval	2353		
Top Log Interval	Surf.		
Open Hole Size	7 7/8"		
Type Fluid	water		
Density / Viscosity	///		
Max. Recorded Temp.	///		
Estimated Cement Top	Surf.		
Time Well Ready	ROA		
Time Logger on Bottom	11:30 AM		
Equipment Number	T996		
Location	Trinidad		
Recorded By	A Armijo		
Witnessed By	Mr. Gourdin		

Borehole Record		Tubing Record				
Bit	From	To	Size	Weight	From	To

Casing Record	Size	Wgt/Ft	Top	Bottom
Surface String	8 5/8"		00	499'
Prot. String				
Production String	5 1/2"		00	2428'
Liner				

<<< Fold Here >>>

All interpretations are opinions based on inferences from electrical or other measurements and we cannot and do not guarantee the accuracy or correctness of any interpretation, and we shall not, except in the case of gross or willful negligence on our part, be liable or responsible for any loss, costs, damages, or expenses incurred or sustained by anyone resulting from any interpretation made by any of our officers, agents or employees. These interpretations are also subject to our general terms and conditions set out in our current Price Schedule.

Comments

First Bosque entrance to Cherry Canyon past Cmpressor station 5 stay on main road at the hard awitchback stay right take 2nd left @ Y stay left dead end on location

CBL ran under 1000 PSI.



SUPERIOR
Black Lick, Pa.
Mercer, Pa.
Wooster, Oh.
Cleveland, Ok.
Trinidad, Co.

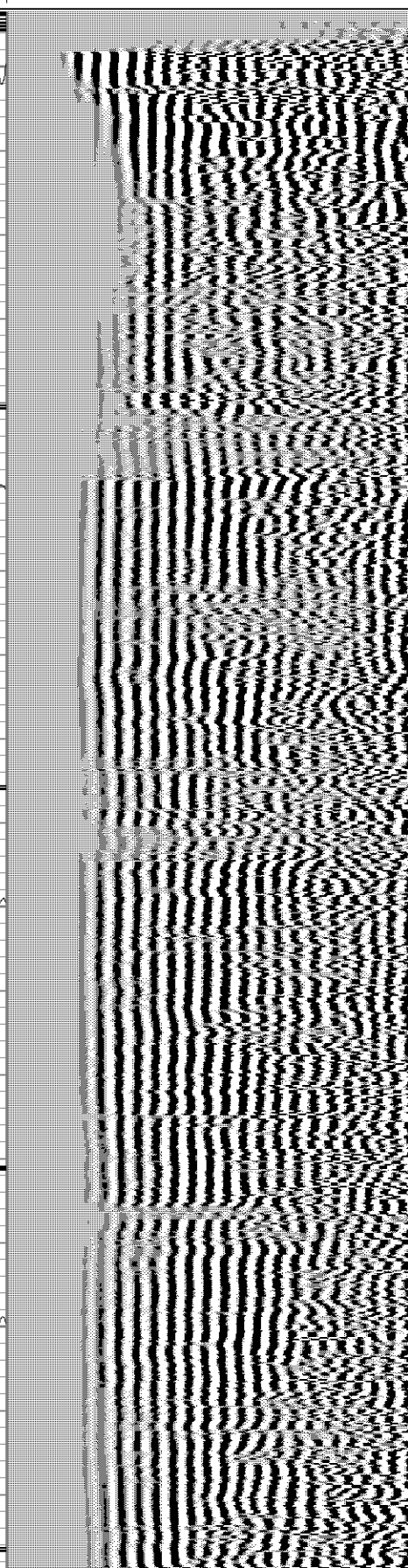
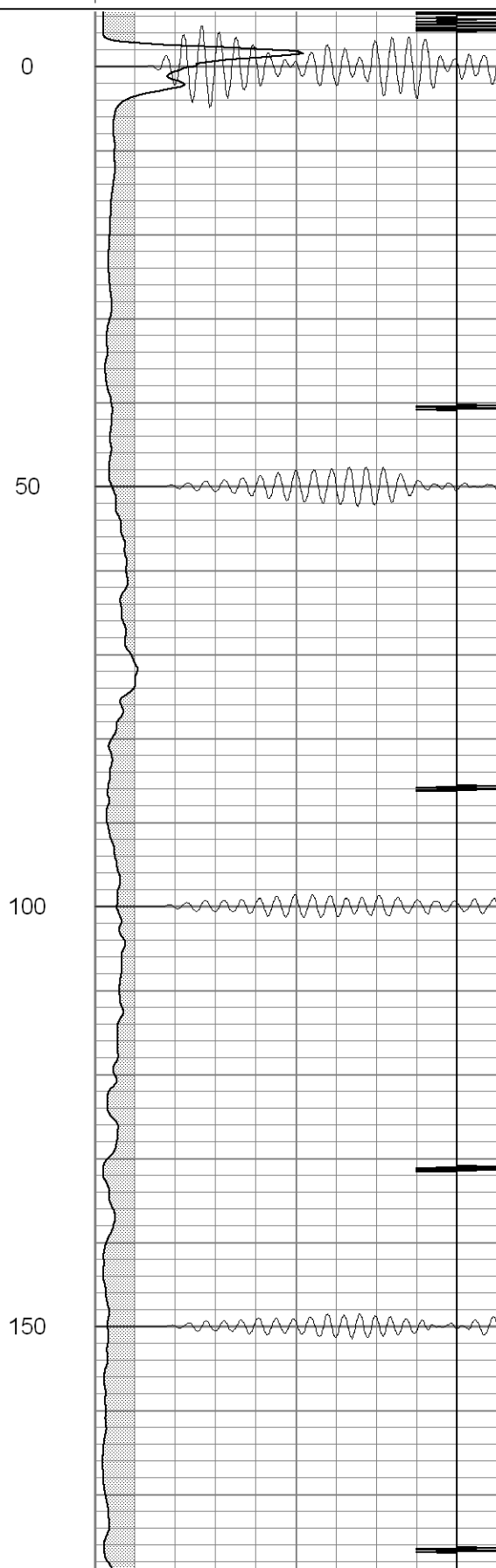
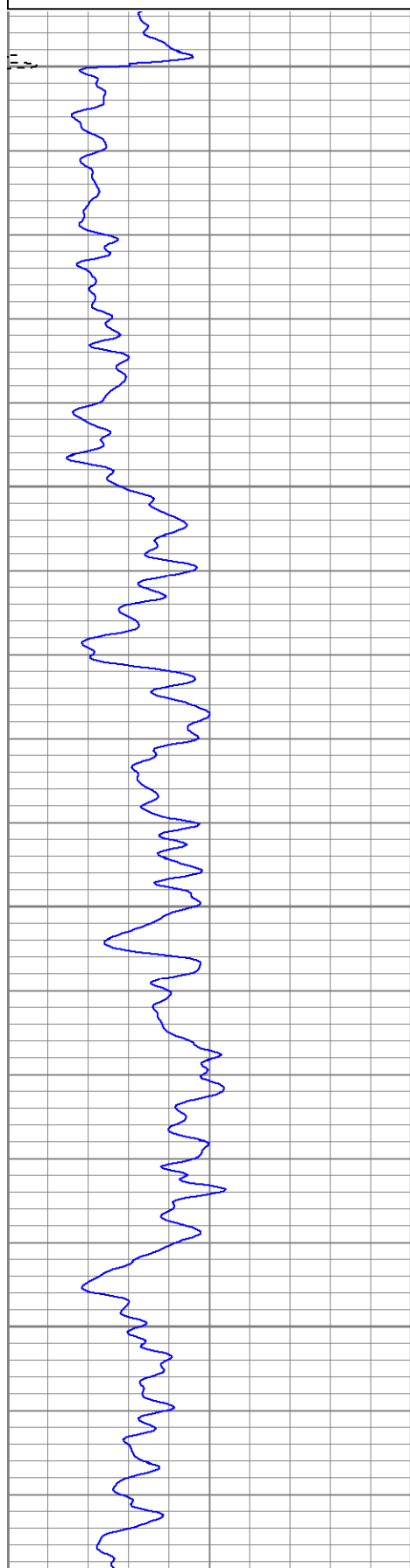
Main Pass 1000 PSI

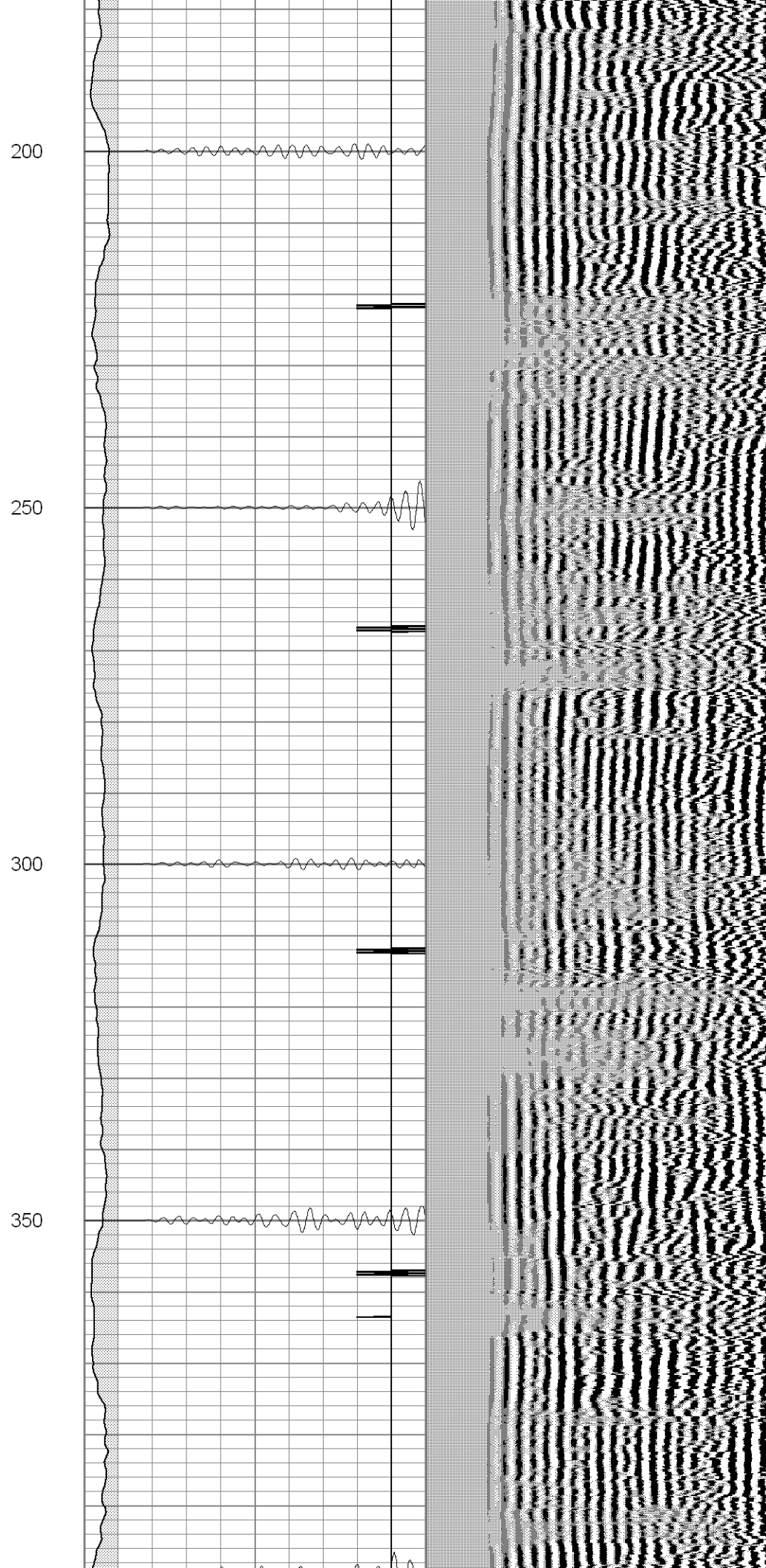
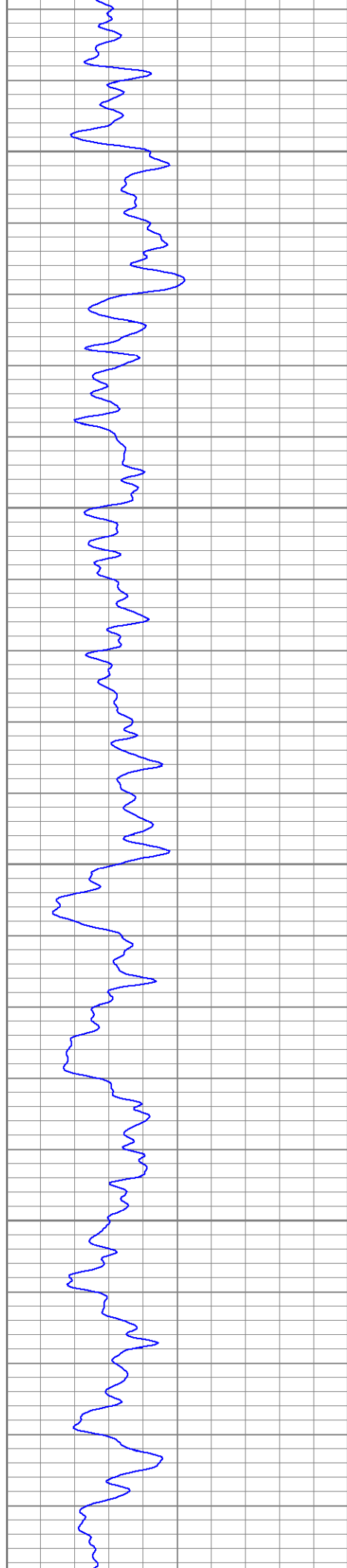
Database File: ge3215081808b.db
Dataset Pathname: pass2.2
Presentation Format: cblrt
Dataset Creation: Mon Aug 18 12:36:57 2008 by Calc Open-Cased 071220
Charted by: Depth in Feet scaled 1:240

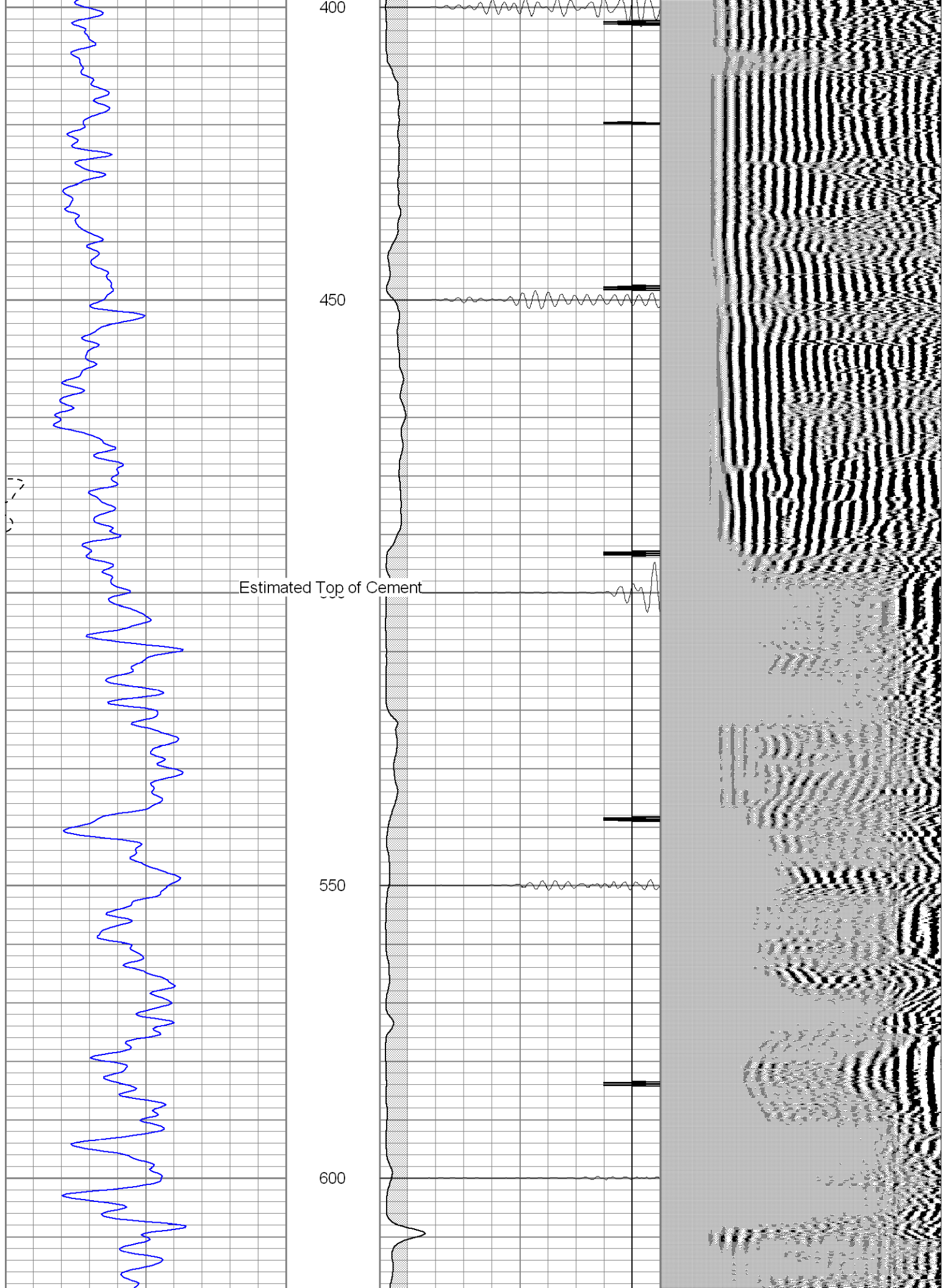
0	GR (GAPI)	200
400	TT3 (usec)	200

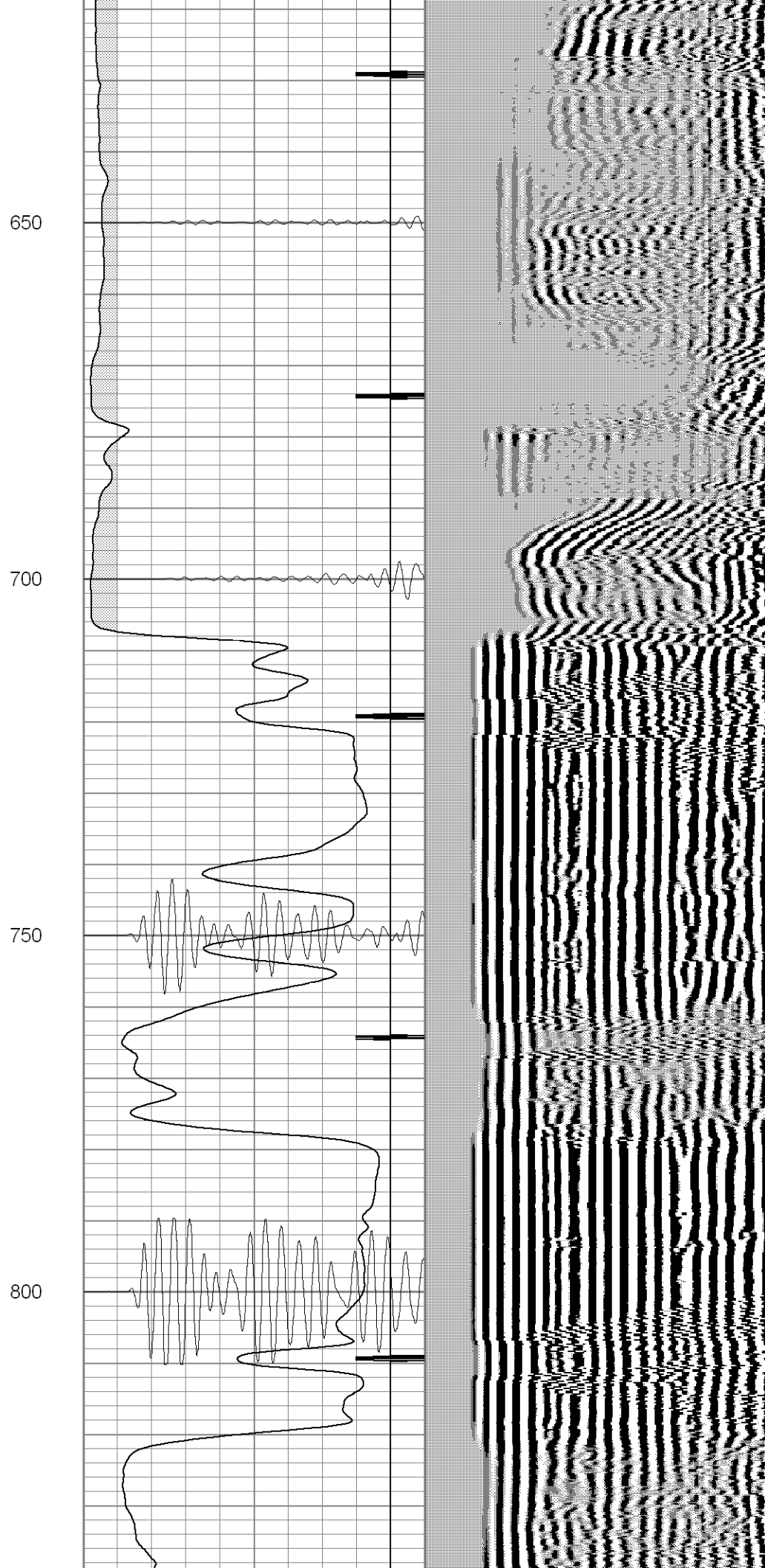
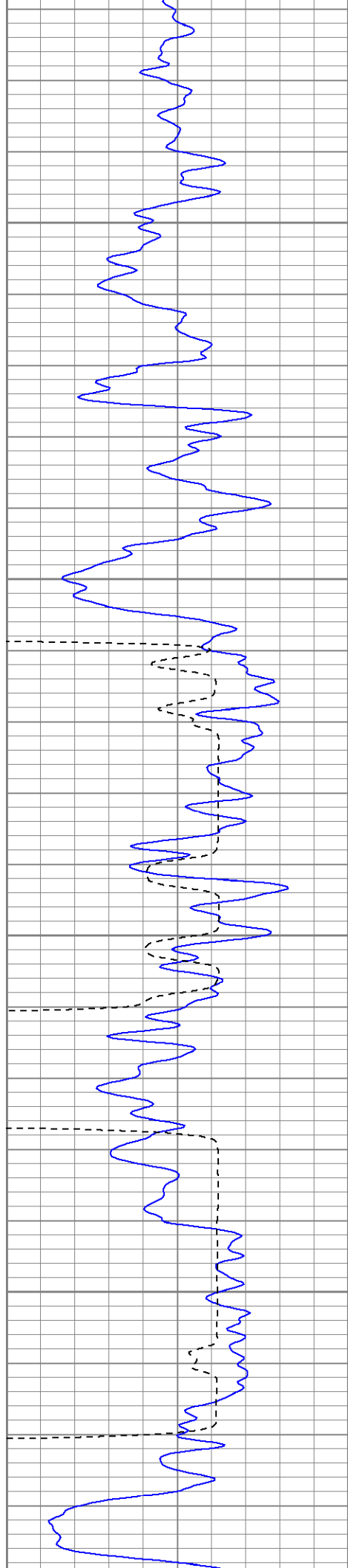
0	AMP3 (mV)	100
18	CCL	-2
200	CBL5	1200

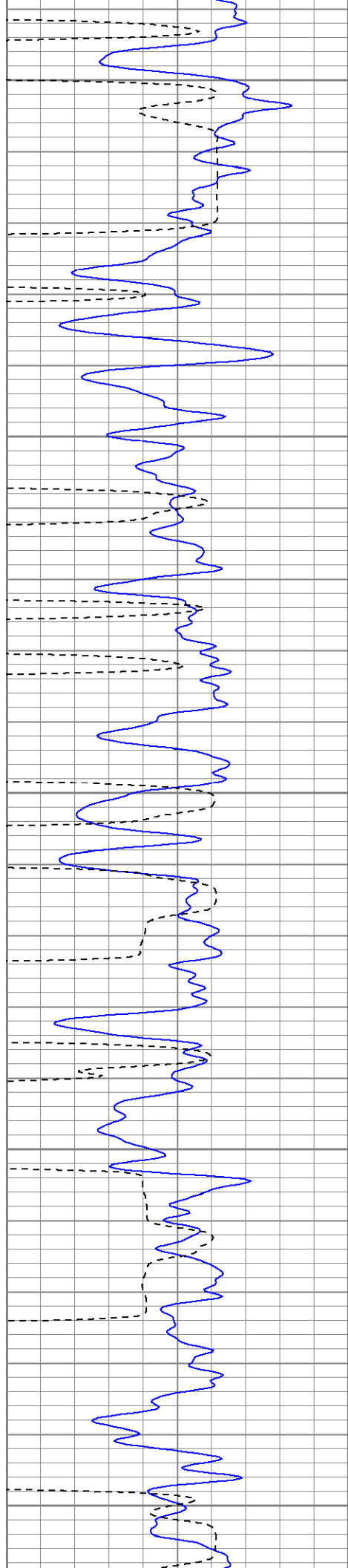
200	Variable Density	1200
-----	------------------	------











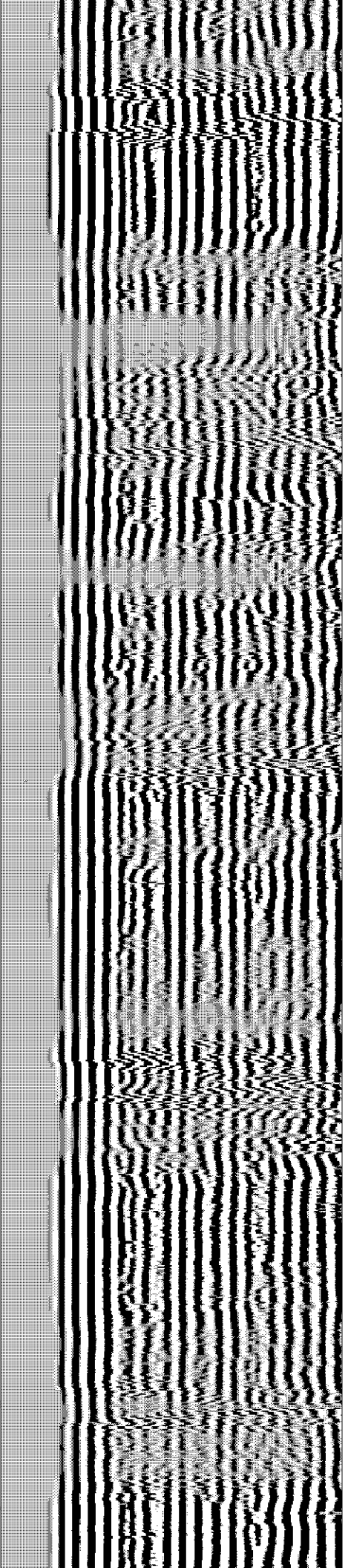
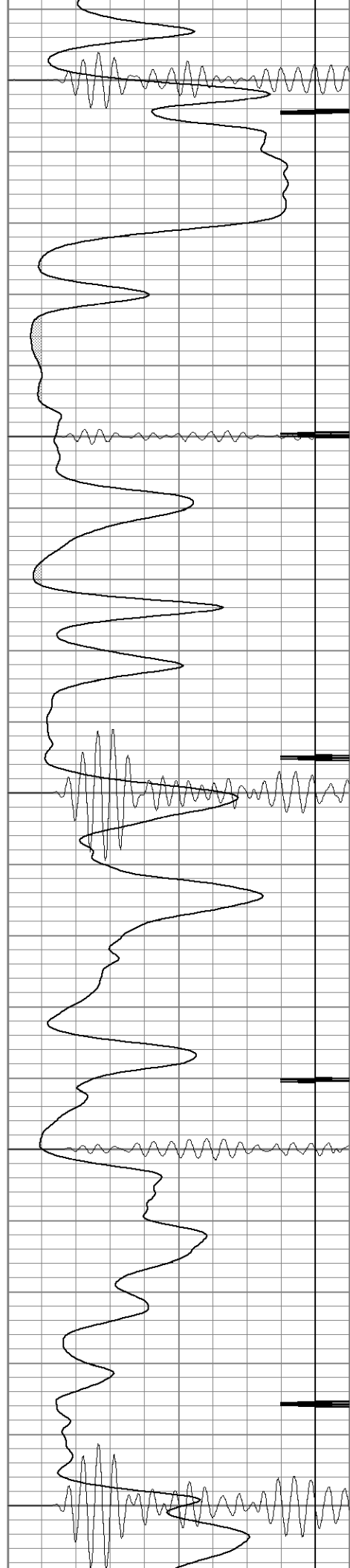
850

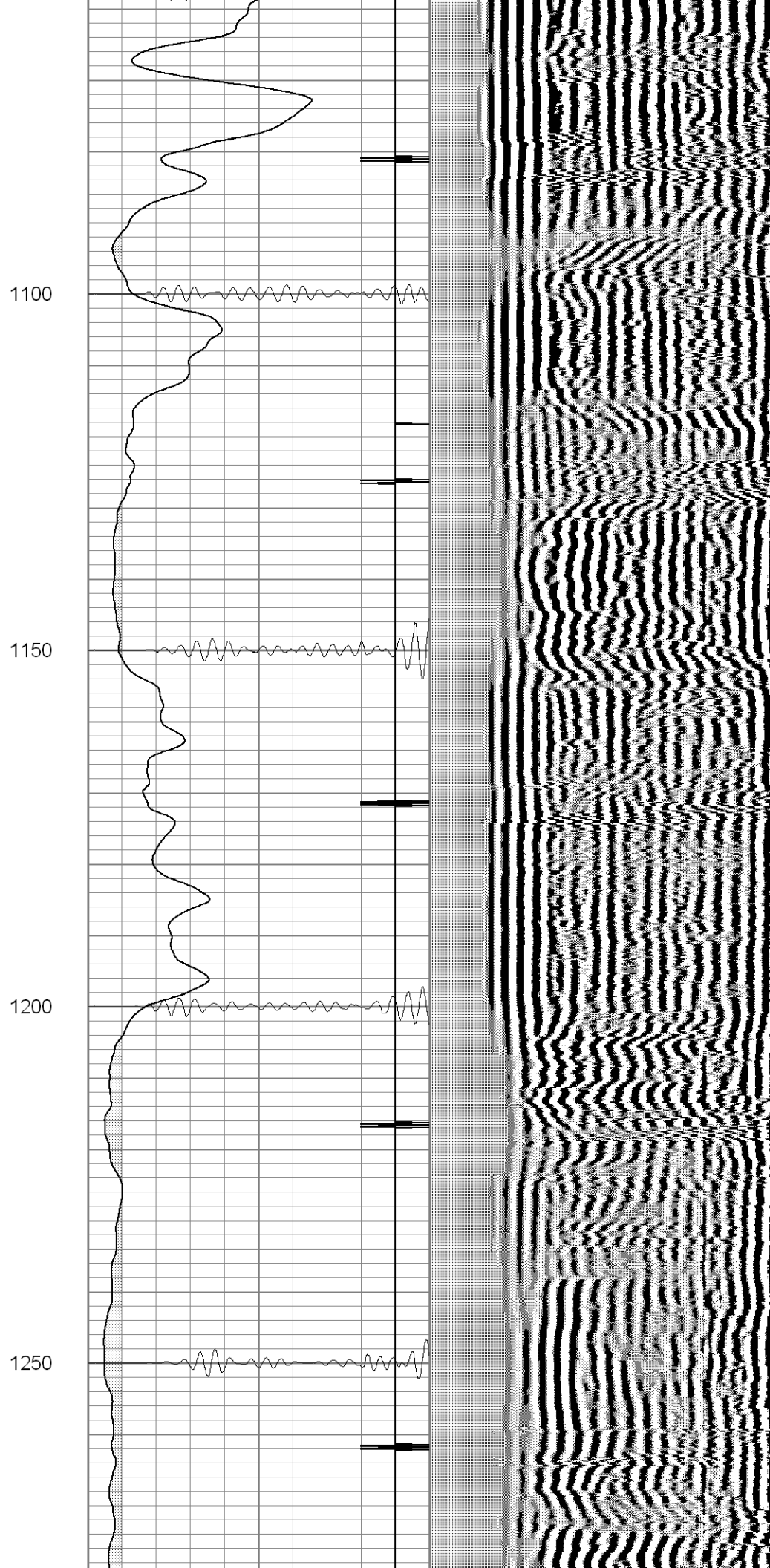
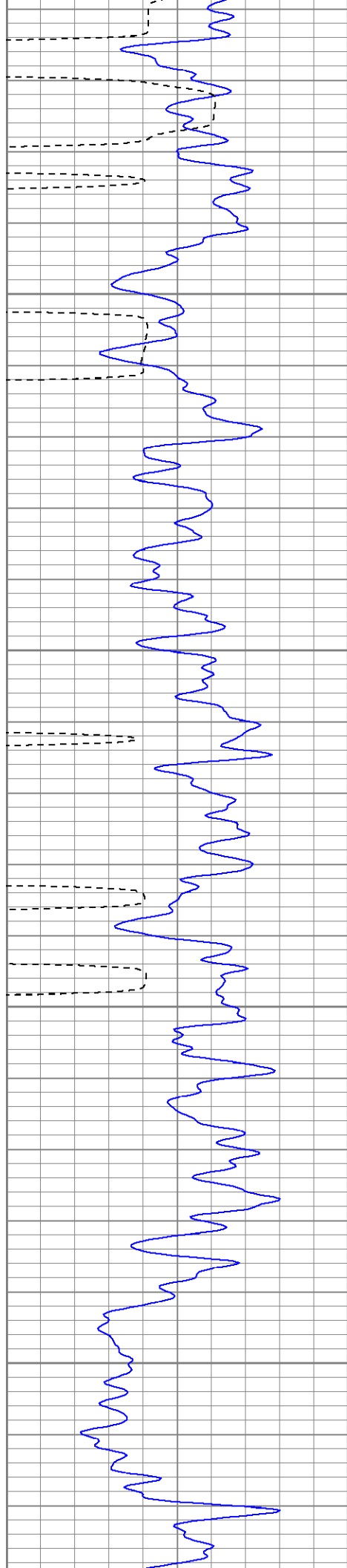
900

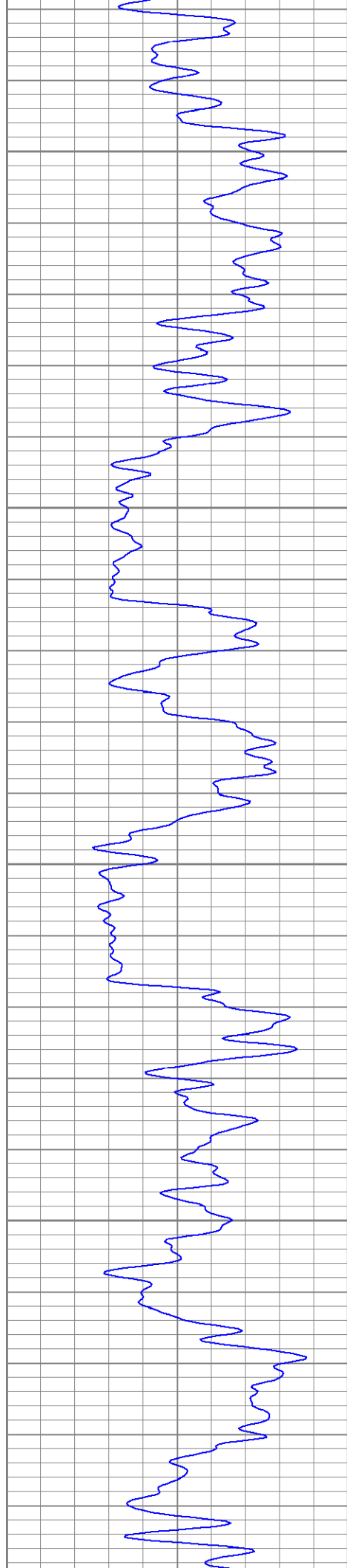
950

1000

1050





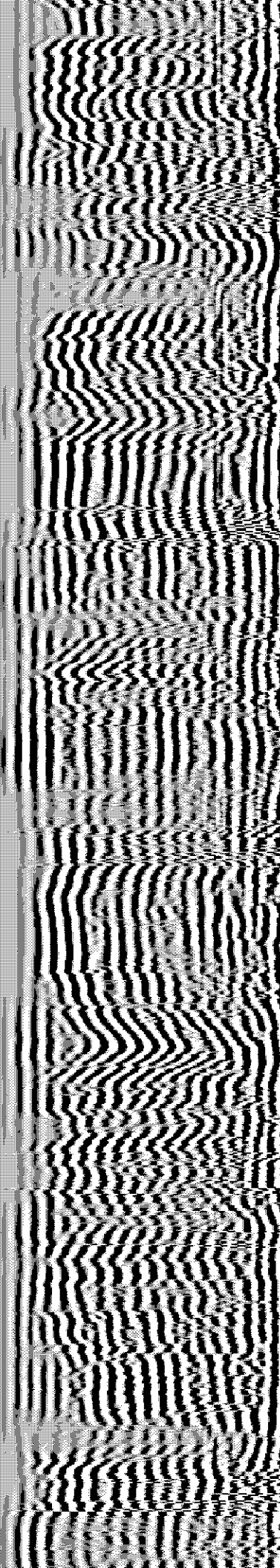


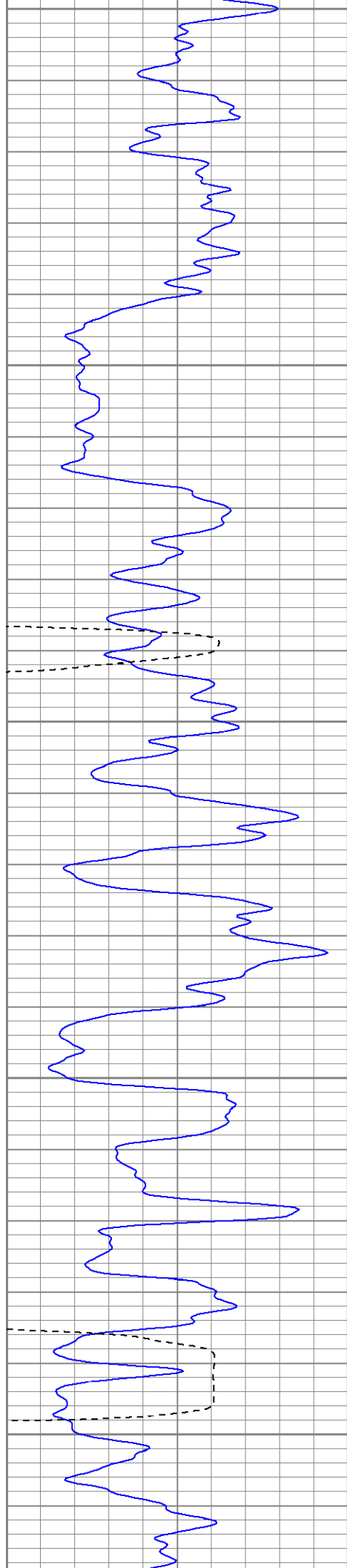
1300

1350

1400

1450





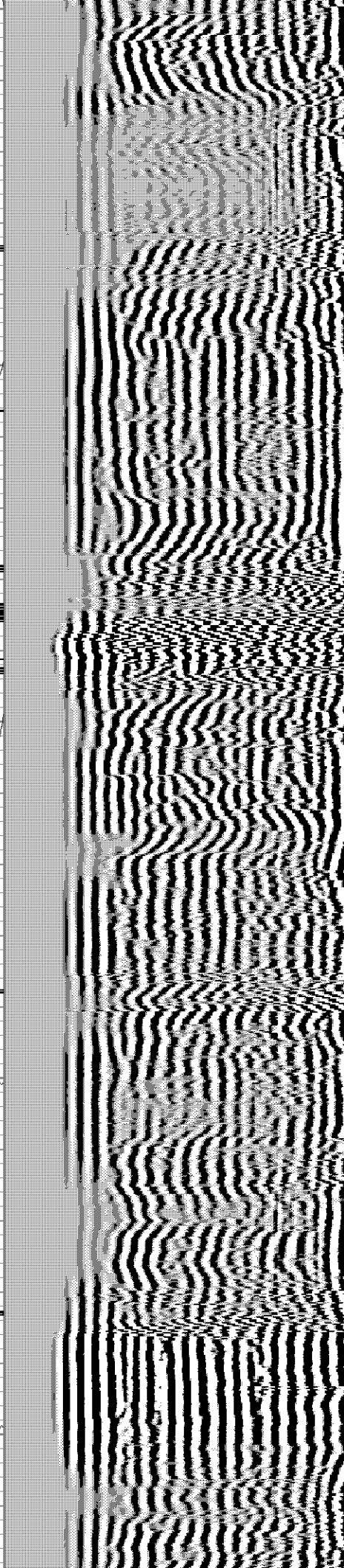
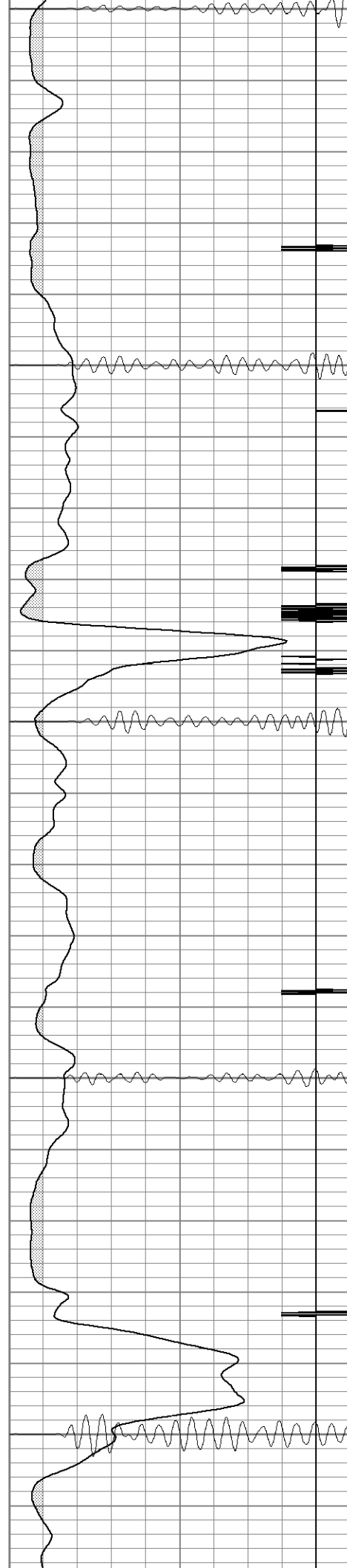
1500

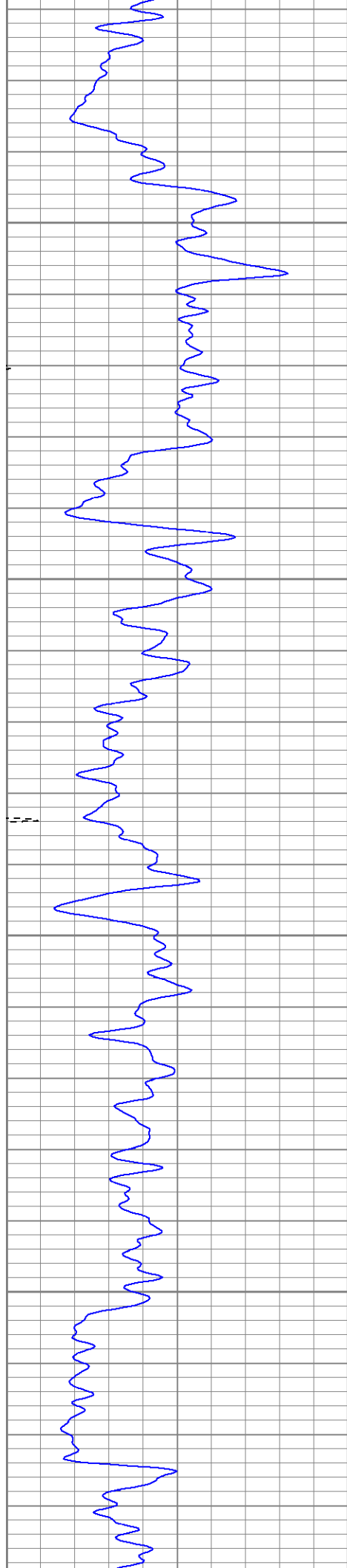
1550

1600

1650

1700



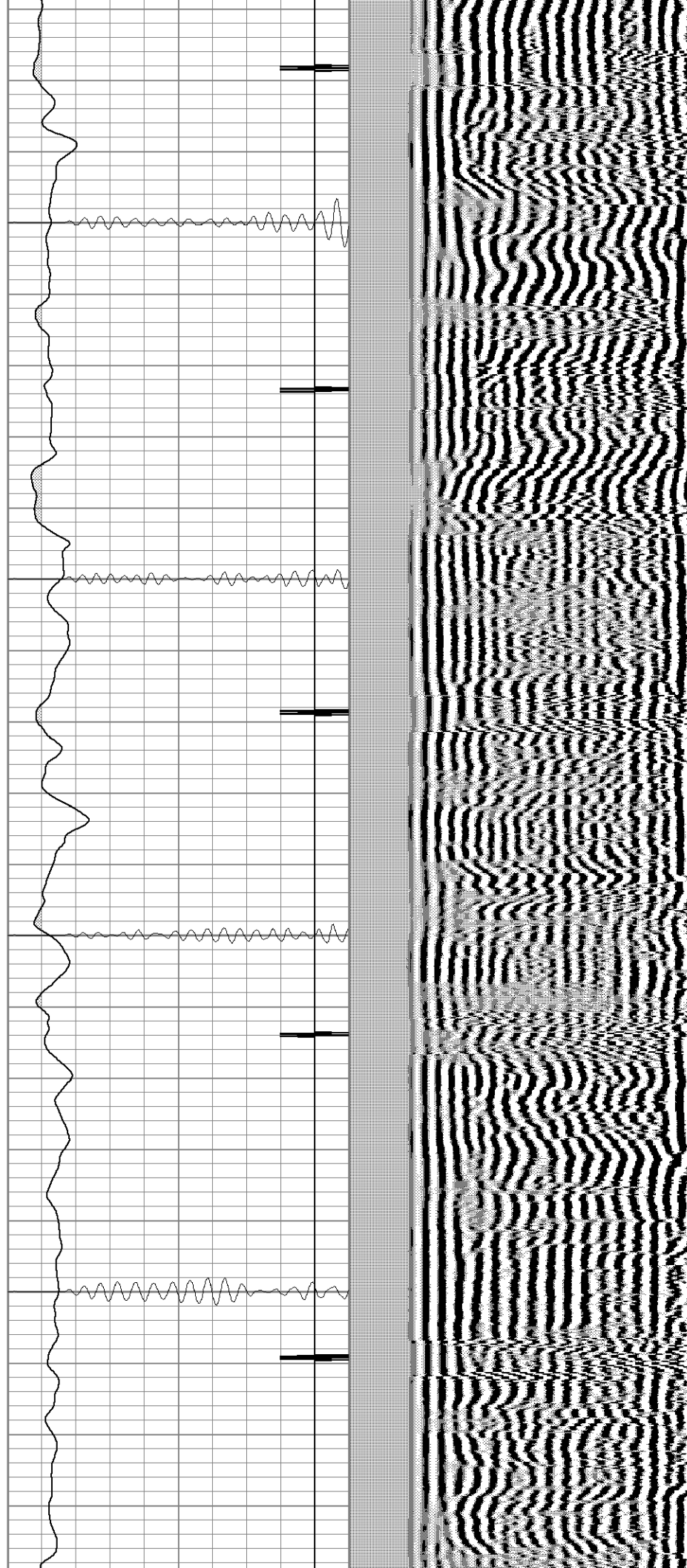


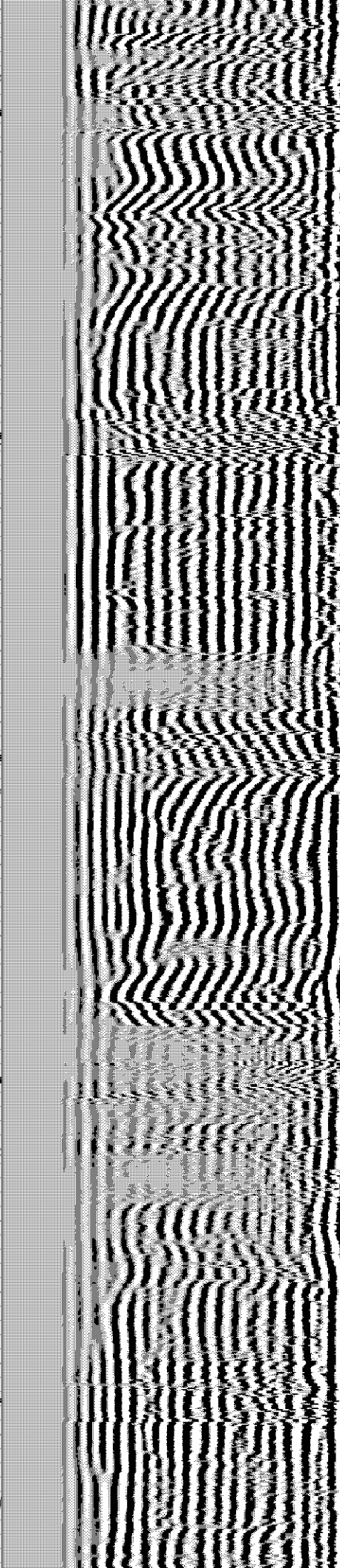
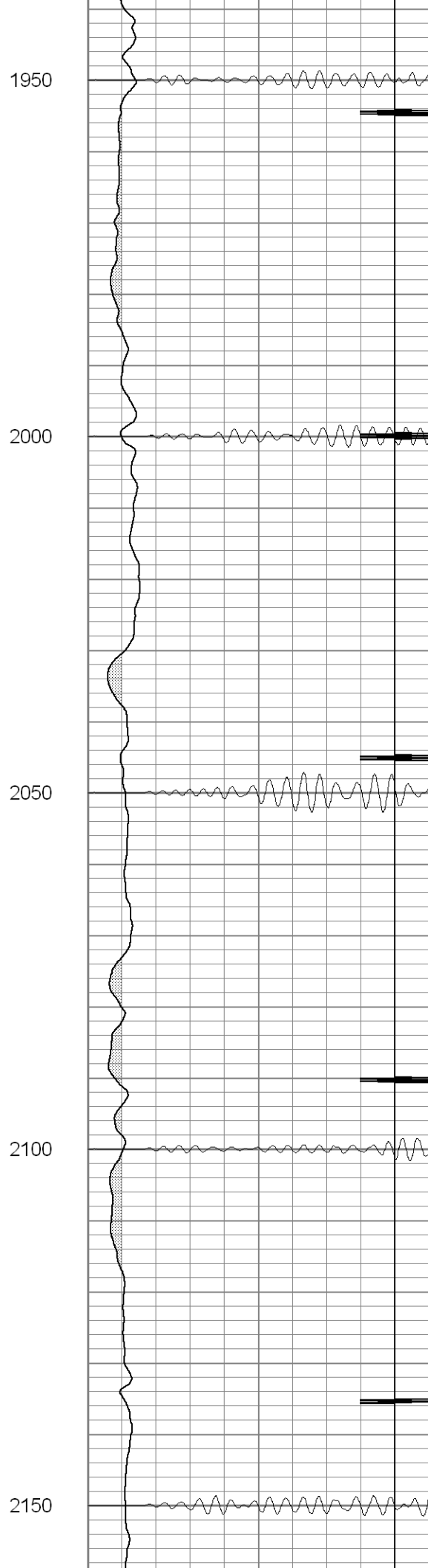
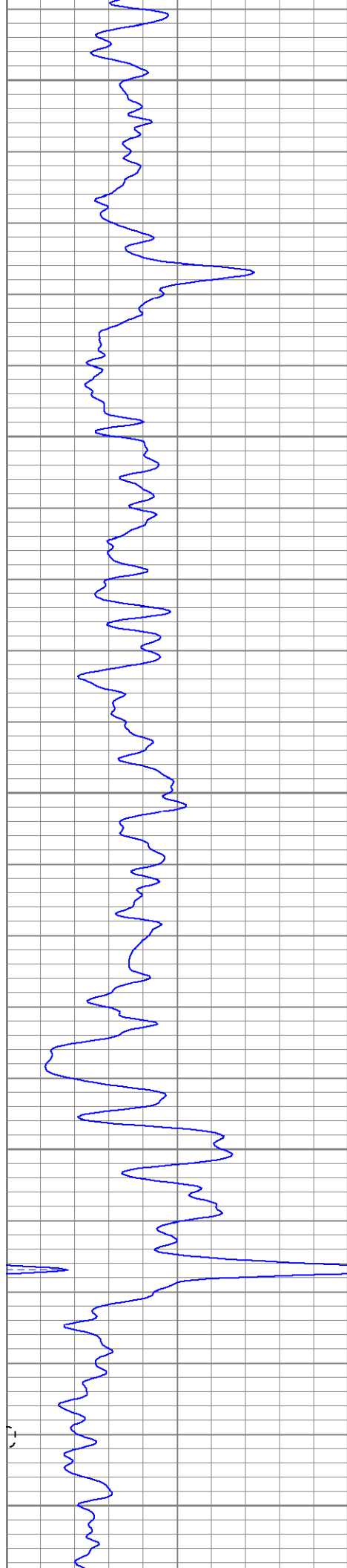
1750

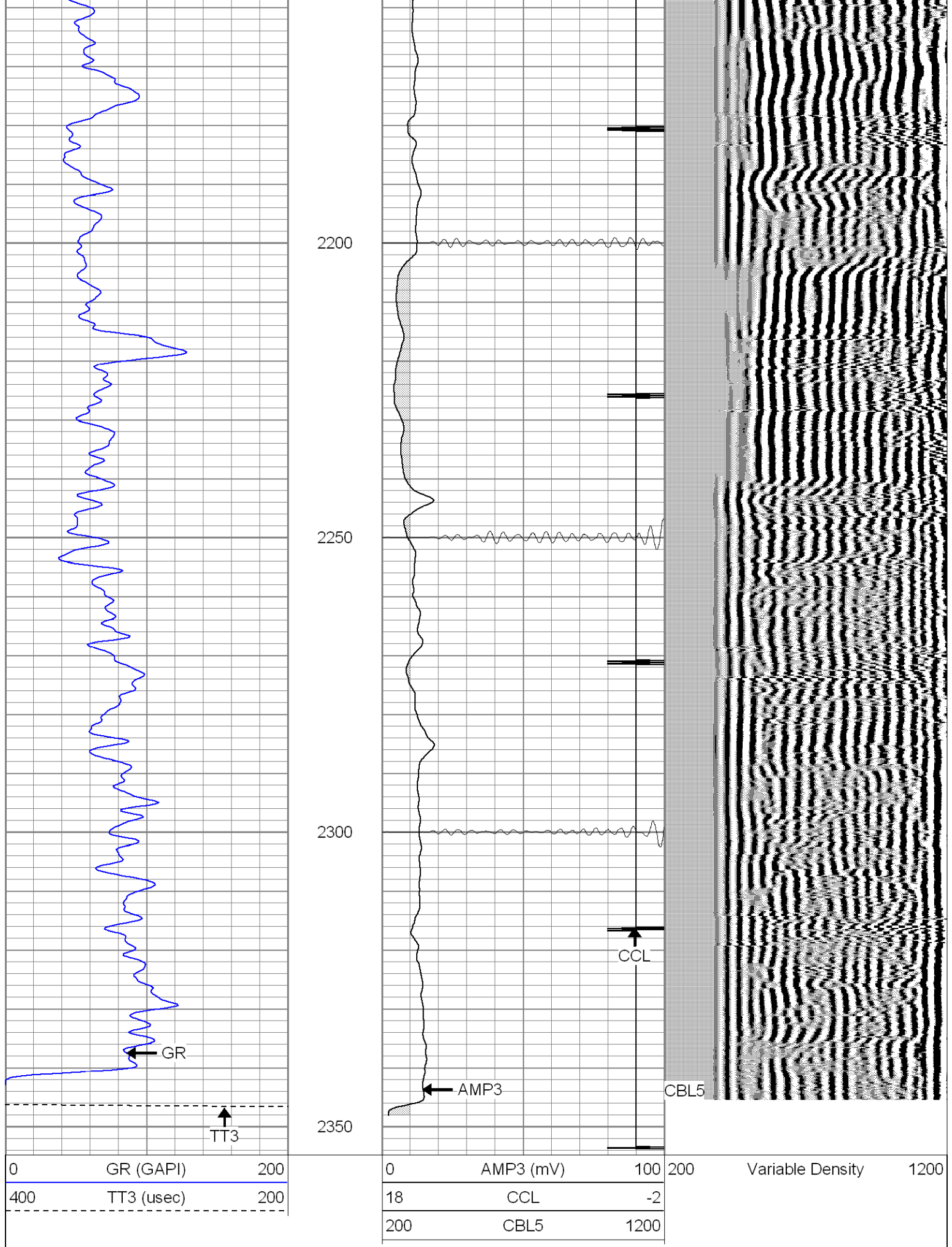
1800

1850

1900

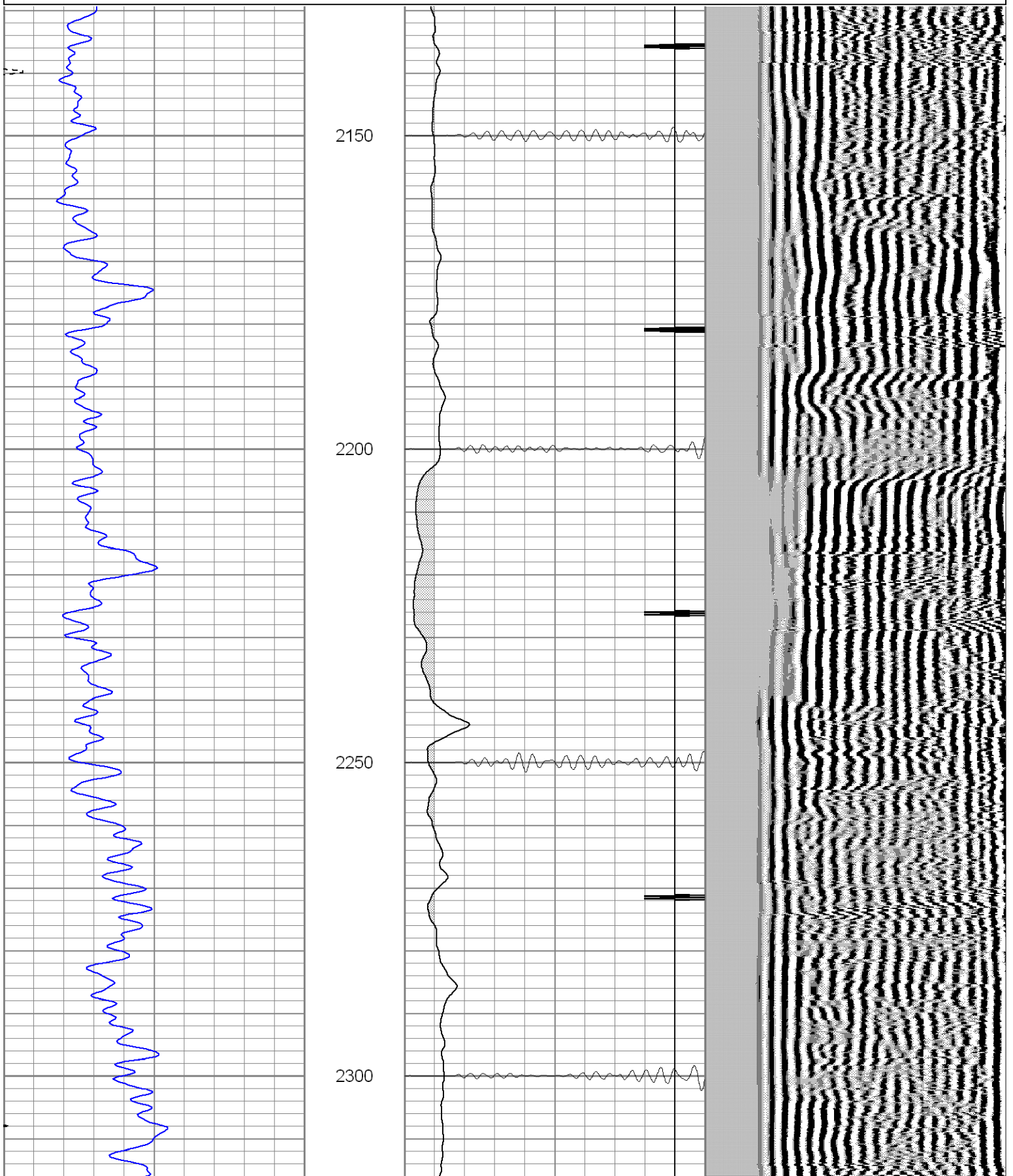


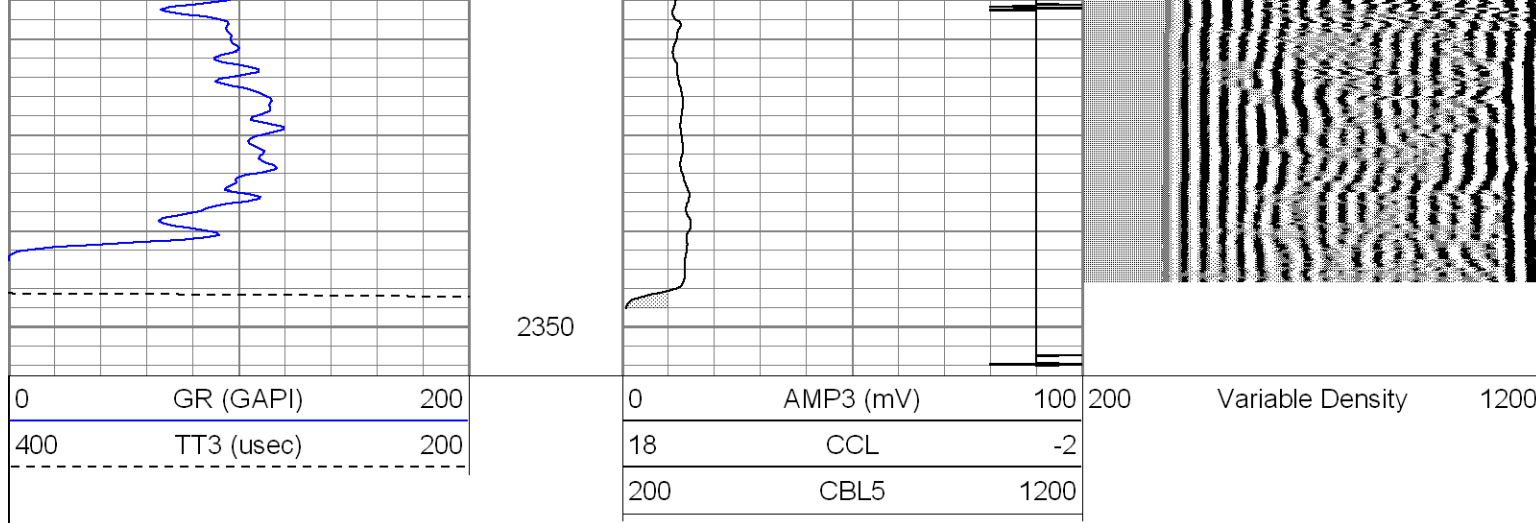




Database File: ge3215081808b.db
Dataset Pathname: pass1
Presentation Format: cblrt
Dataset Creation: Mon Aug 18 11:08:38 2008 by Log Open-Cased 071220
Charted by: Depth in Feet scaled 1:240

0	GR (GAPI)	200	0	AMP3 (mV)	100	200	Variable Density	1200
400	TT3 (usec)	200	18	CCL	-2			
-----			200	CBL5	1200			





Calibration Report

Database File: ge3215081808b.db
 Dataset Pathname: pass1
 Dataset Creation: Mon Aug 18 11:08:38 2008 by Log Open-Cased 071220

Cement Bond Log Calibration Report

Serial Number: titan6
 Tool Model: T6
 Performed: Wed Aug 13 09:50:49 2008

Depth: 192.018 ft
 Casing Diameter: 5.5 in

3' Spacing 5' Spacing

Signal Zero: 0 0 mV
 Calibrated Amplitude: 85 85 mV
 Reading at Signal Zero: 0.00498047 0.00493164 V
 Reading in Free Pipe: 1.423 1.75159 V

Gain: 59.9428 48.6644
 Offset: 1 -0.239996

Gamma Ray Calibration Report

Serial Number: titan6
 Tool Model: T6
 Performed: Mon Aug 11 08:32:31 2008

Calibrator Value: 1.0 GAPI

Background Reading: 0.0 cps
 Calibrator Reading: 1.0 cps

Sensitivity: 1.0000 GAPI/cps

Sensor	Offset (ft)	Schematic	Description	Len (ft)	OD (in)	Wt (lb)
GR	13.64		None	0.75	1.50	5.00
			GR-T6 (titan6)	2.52	2.44	25.00
WVF5	9.49					

WVF3	8.49			CBL-T6 (titan6)	7.23	2.25	110.00
				X	3.00	1.69	25.00
CCL	0.83			CCL-T6 (titan6) Long	2.15	2.75	15.00

Dataset: ge3215081808b.db: field/well/run1/pass1
 Total Length: 15.66 ft
 Total Weight: 180.00 lb
 O.D. 2.75 in