



**SUPERIOR**  
WELL SERVICES  
Black Lick, Pa.  
Mercer, Pa.  
Wooster, Oh.  
Cleveland, Ok.  
Trinidad, Co.

**CEMENT BOND  
GAMMA RAY  
1000 PSI**

Company XTO Energy Inc.

Well Apache Canyon 04-01

Field Purgatorie River

County Las Animas State CO

Location: API # : 05 071 0963300

SEC 04 TWP 34S RGE 67W

Permanent Datum Ground level Elevation 7474'

Log Measured From Ground Level

Drilling Measured From Ground Level

Date 8/15/08

Run Number One

Depth Driller 2250'

Depth Logger 2173'

Bottom Logged Interval 1990'

Top Log Interval Surf.

Open Hole Size 7 7/8"

Type Fluid water

Density / Viscosity

Max. Recorded Temp. Surf.

Estimated Cement Top ROA

Time Well Ready 9:30

Time Logger on Bottom 1996

Equipment Number

Location Trinidad

Recorded By A Armijo

Witnessed By Mr. Gourdin

Run Number Bit From To Size Weight From To

Casing Record Size Wgt/Ft Top Bottom

Surface String 8 5/8" 00 501'

Prot. String 5 1/2" 00

Production String

Liner

<<< Fold Here >>>

All interpretations are opinions based on inferences from electrical or other measurements and we cannot and do not guarantee the accuracy or correctness of any interpretation, and we shall not, except in the case of gross or willful negligence on our part, be liable or responsible for any loss, costs, damages, or expenses incurred or sustained by anyone resulting from any interpretation made by any of our officers, agents or employees. These interpretations are also subject to our general terms and conditions set out in our current Price Schedule.

Comments

First Bosque entrance to Cherry Canyon past Cmpressor station 5 stay on main road at the hard  
awitchback stay left at fork stay right drive thru the GE 33-15 dead on location

CBL ran under 1000 PSI.



**SUPERIOR**  
Black Lick, Pa.  
Mercer, Pa.  
Wooster, Oh.  
Cleveland, Ok.  
Trinidad, Co.

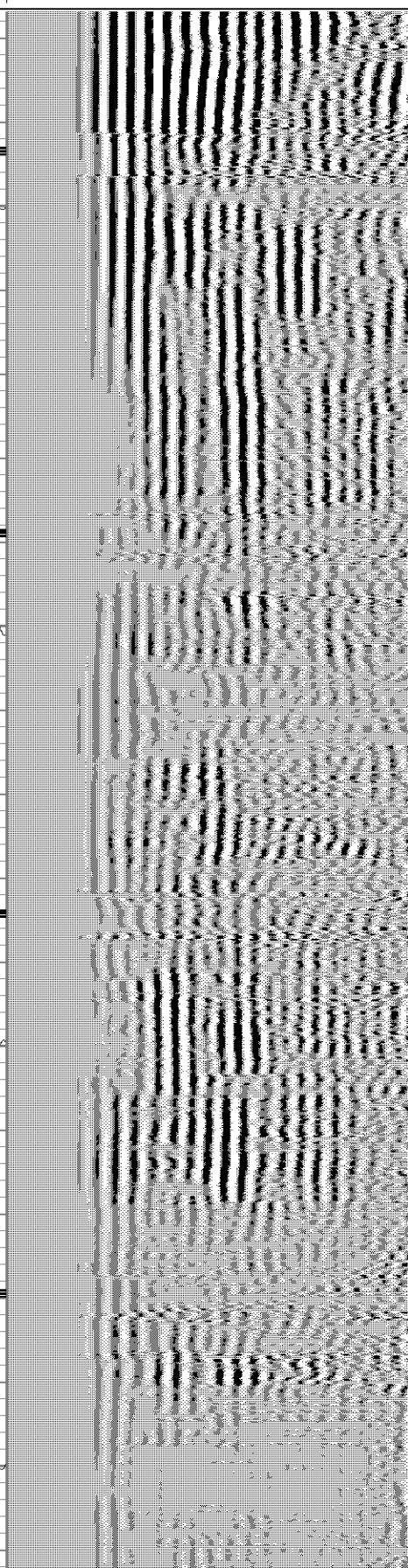
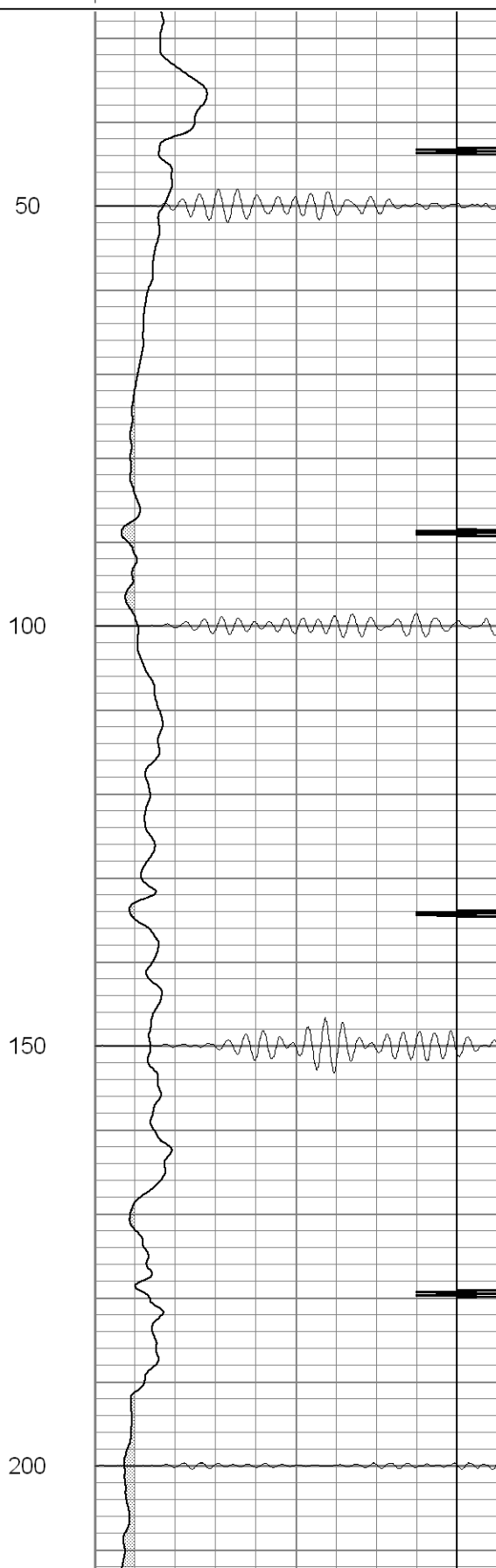
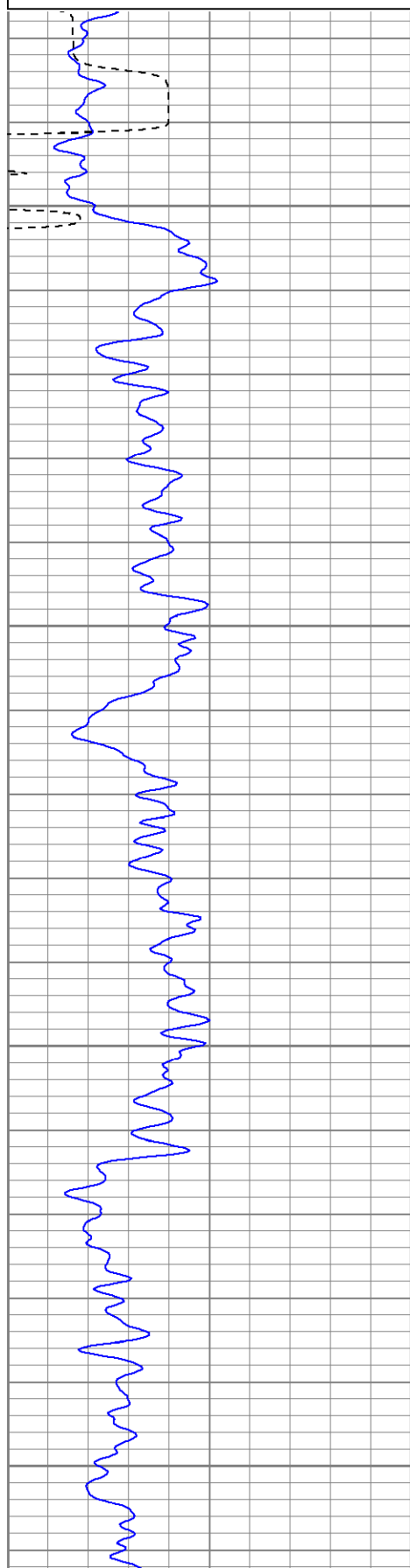
**Main Pass 1000 PSI**

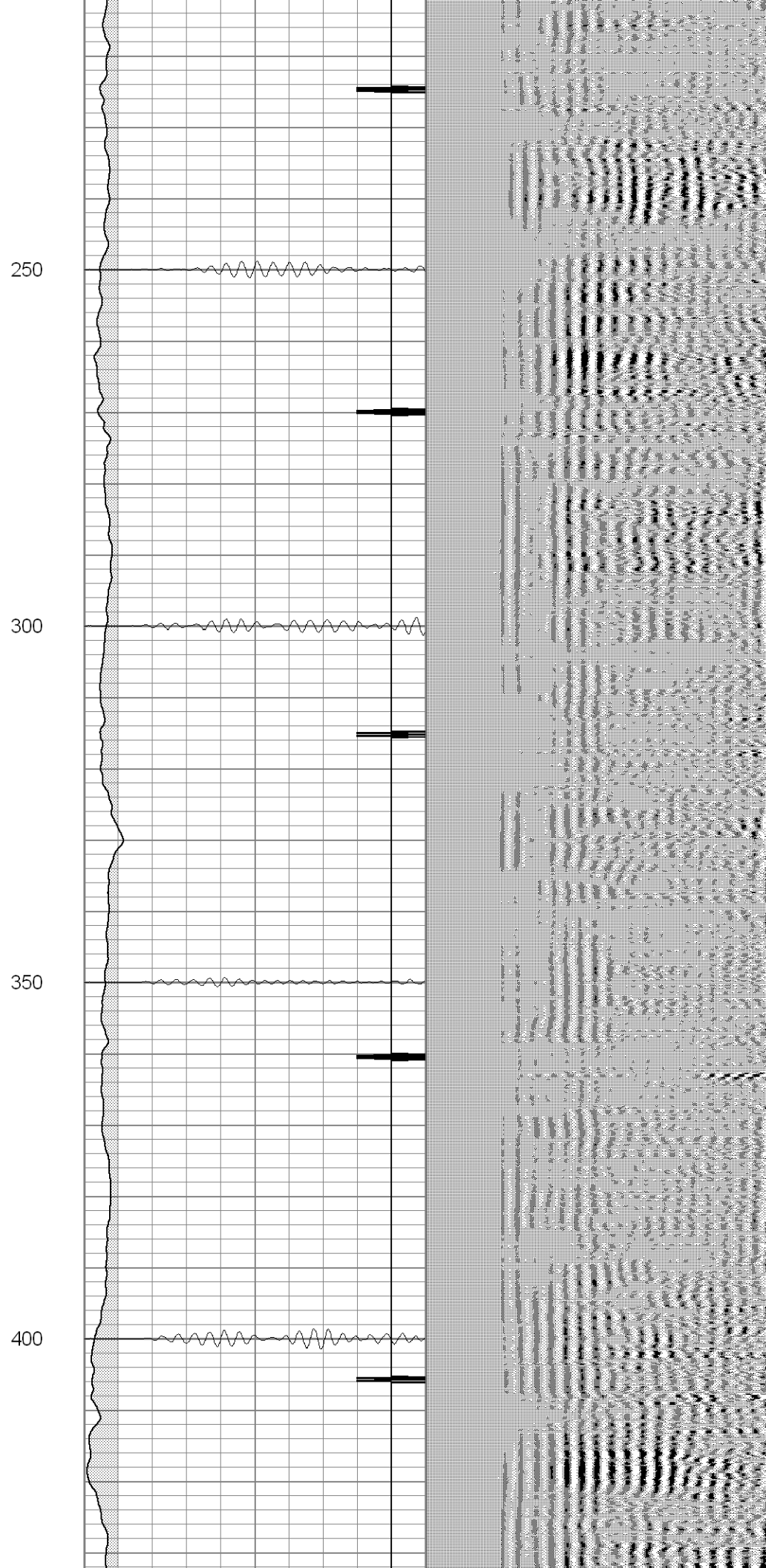
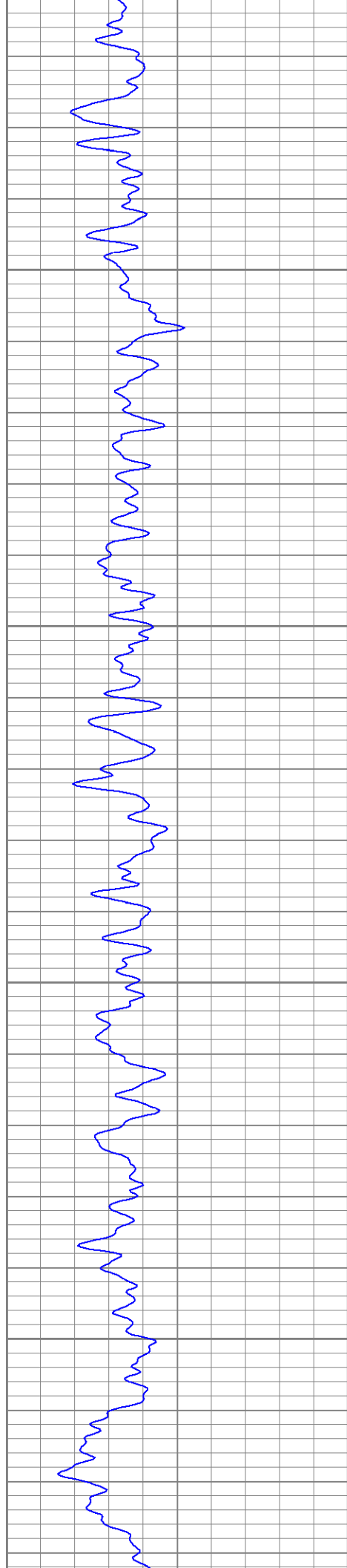
Database File: ac04-01b081508.db  
Dataset Pathname: pass2  
Presentation Format: cblrt  
Dataset Creation: Fri Aug 15 10:15:33 2008 by Log Open-Cased 071220  
Charted by: Depth in Feet scaled 1:240

0	GR (GAPI)	200
400	TT3 (usec)	200

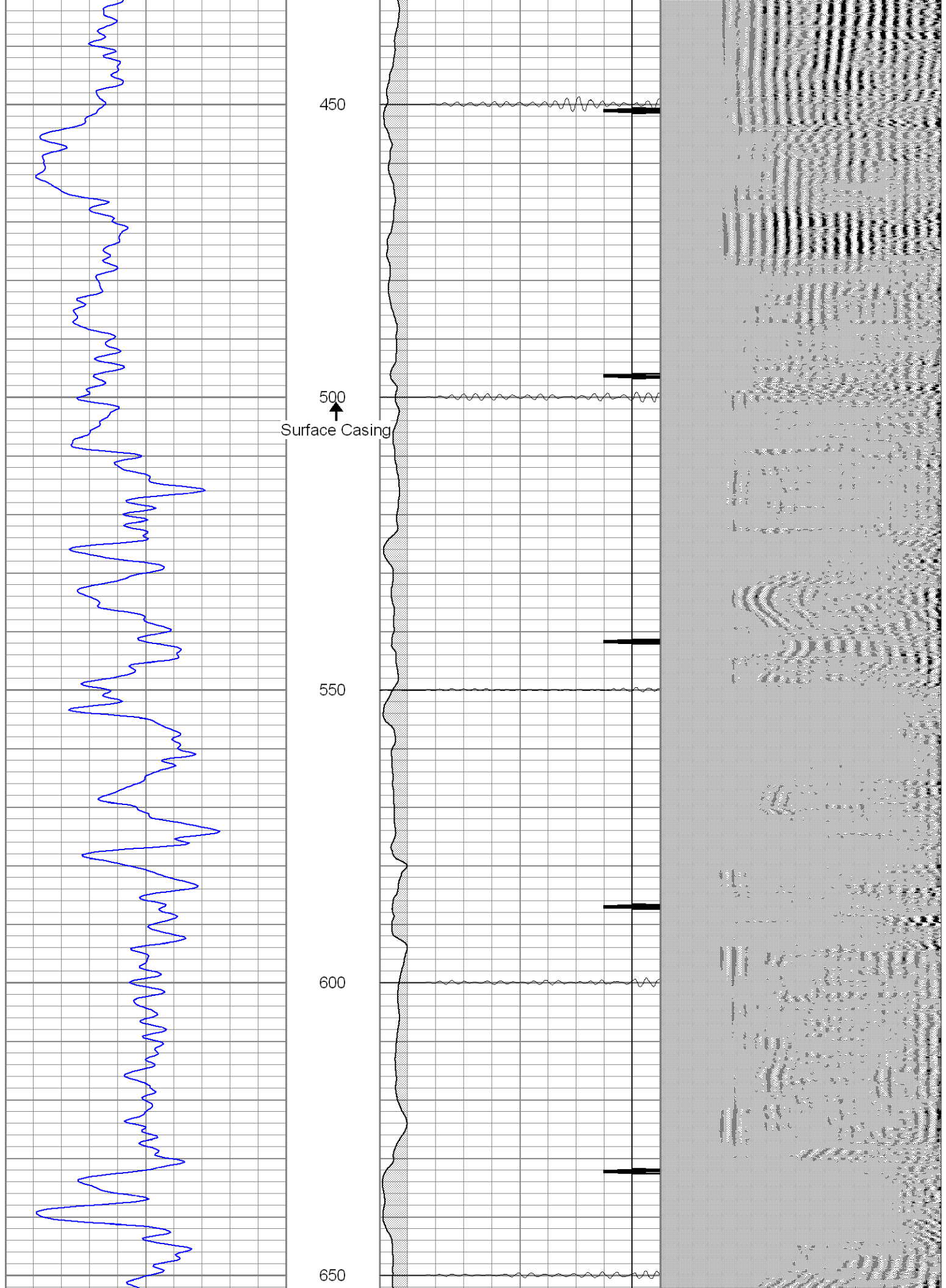
0	AMP3 (mV)	100
18	CCL	-2
200	CBL5	1200

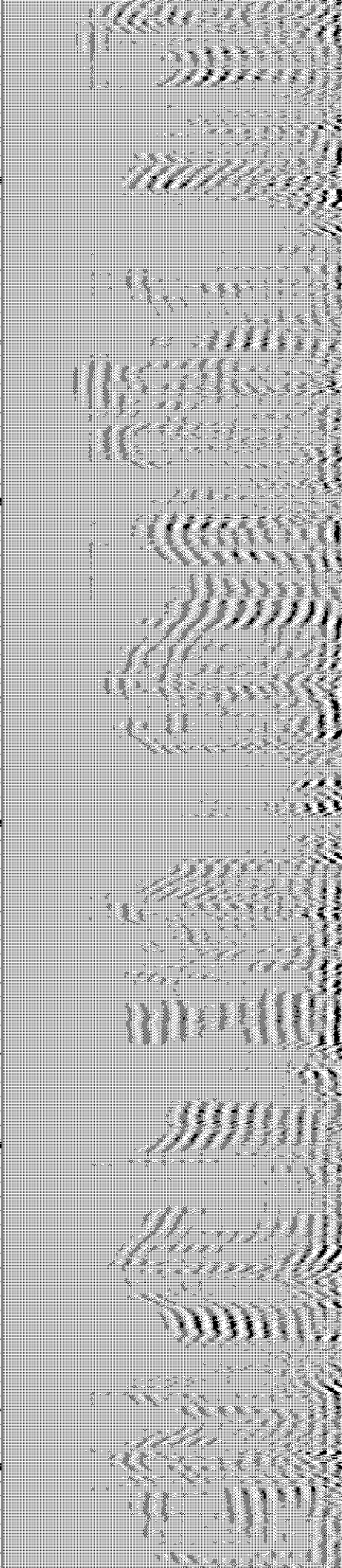
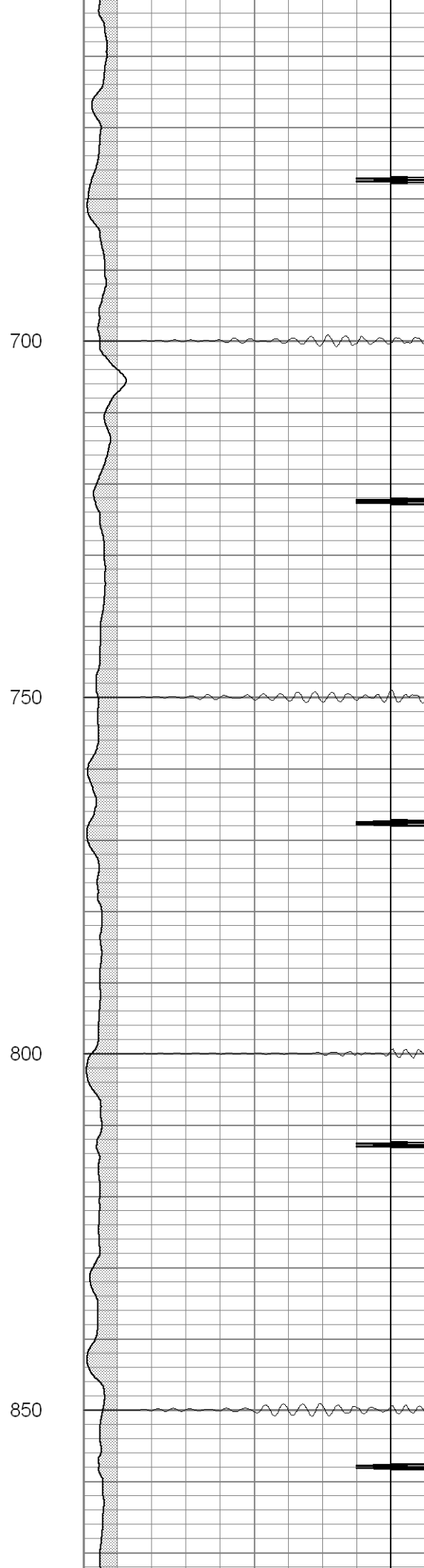
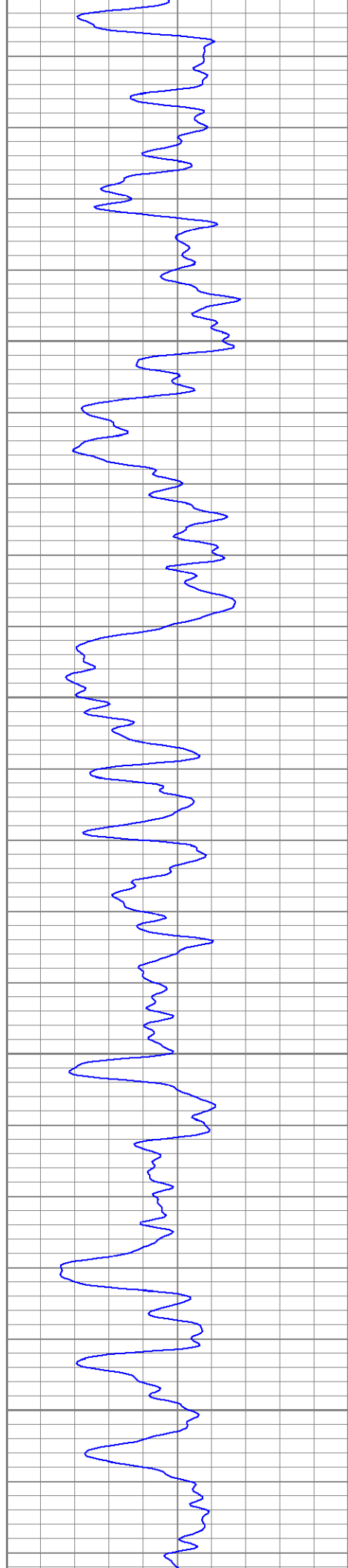
200	Variable Density	1200
-----	------------------	------

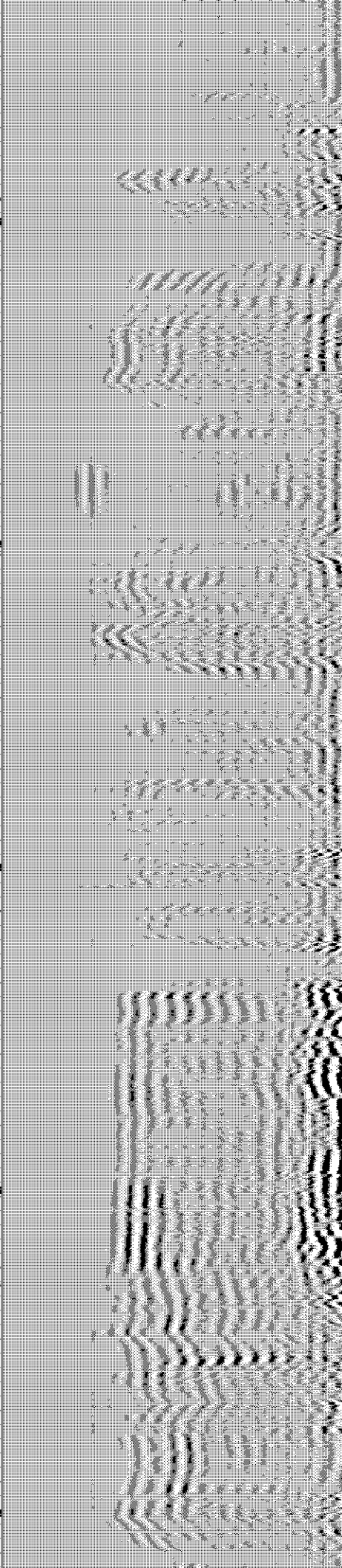
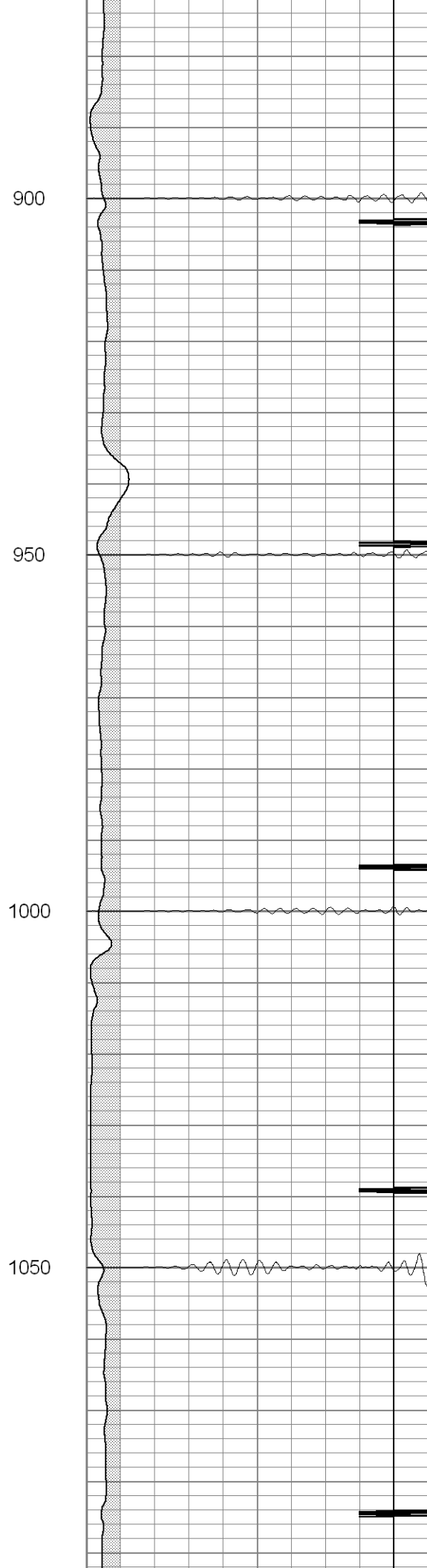
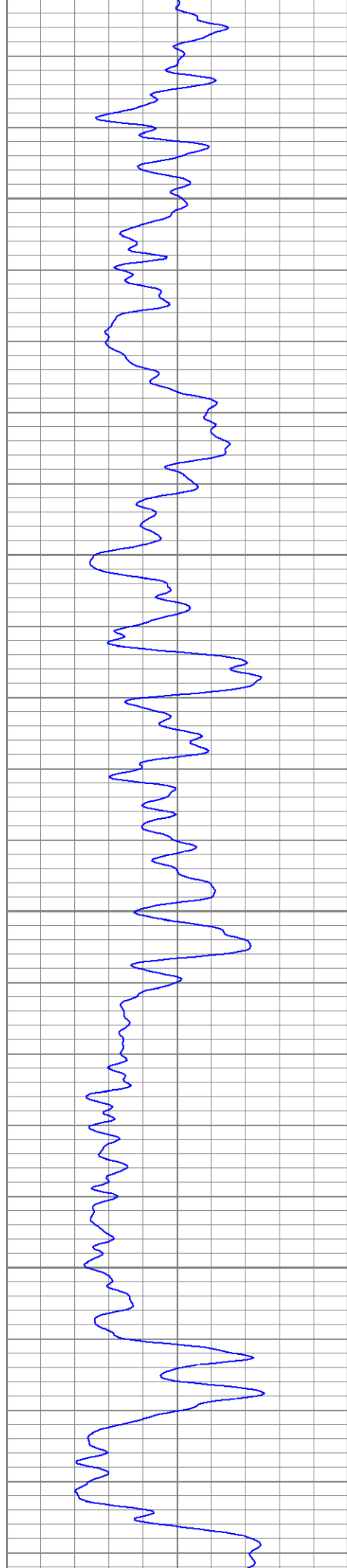




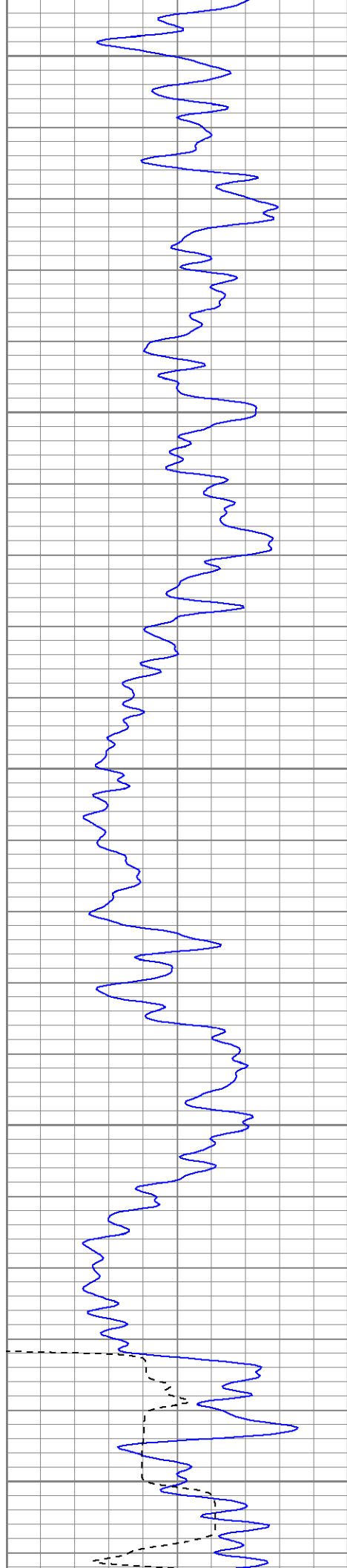












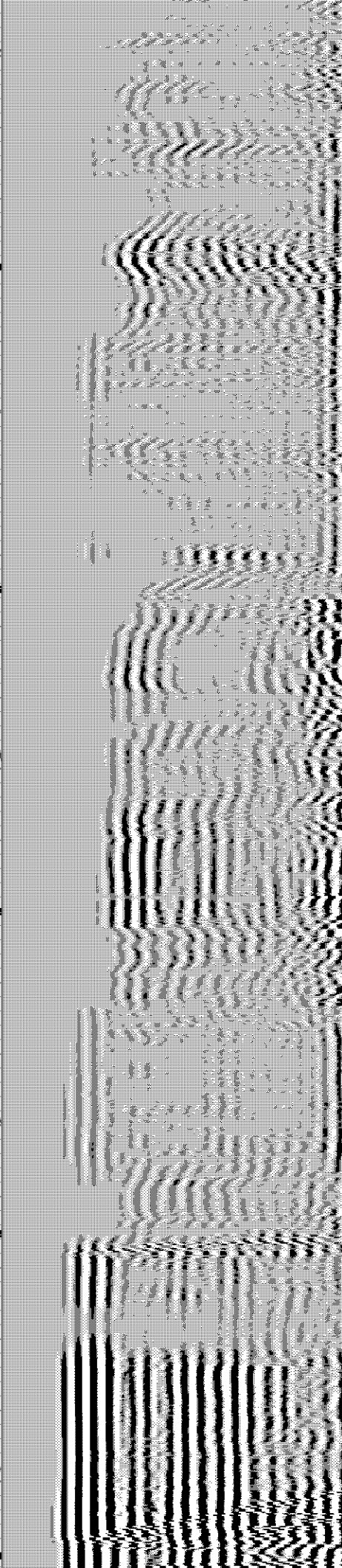
1100

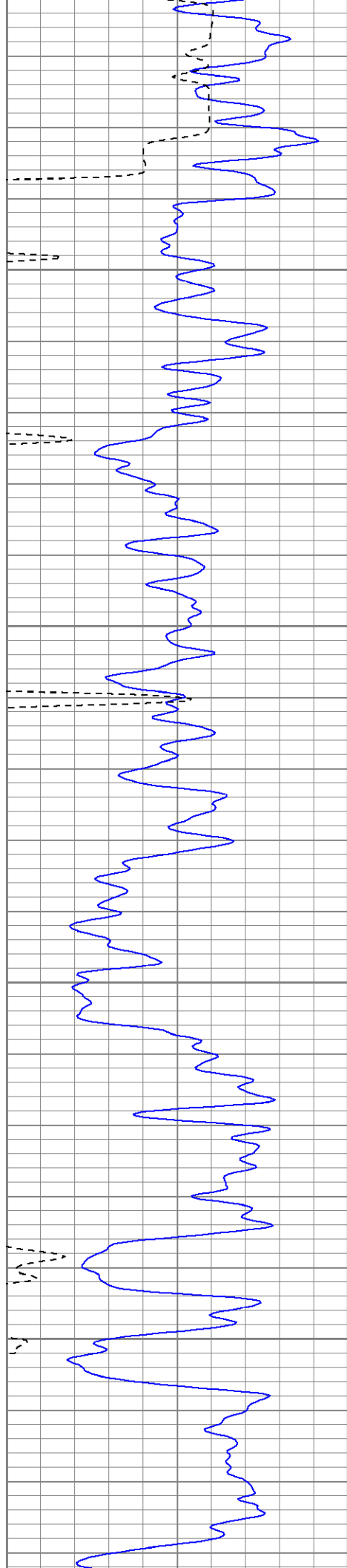
1150

1200

1250

1300



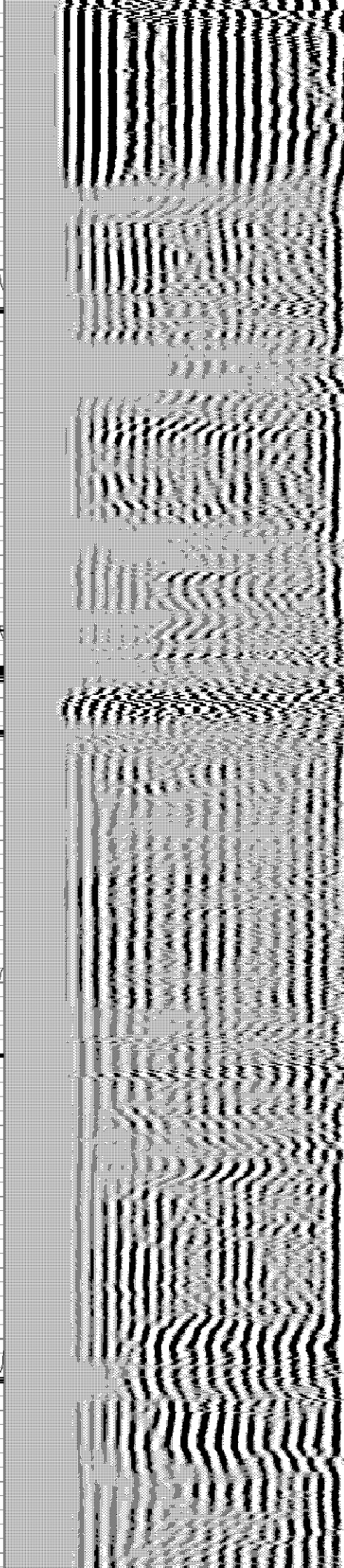
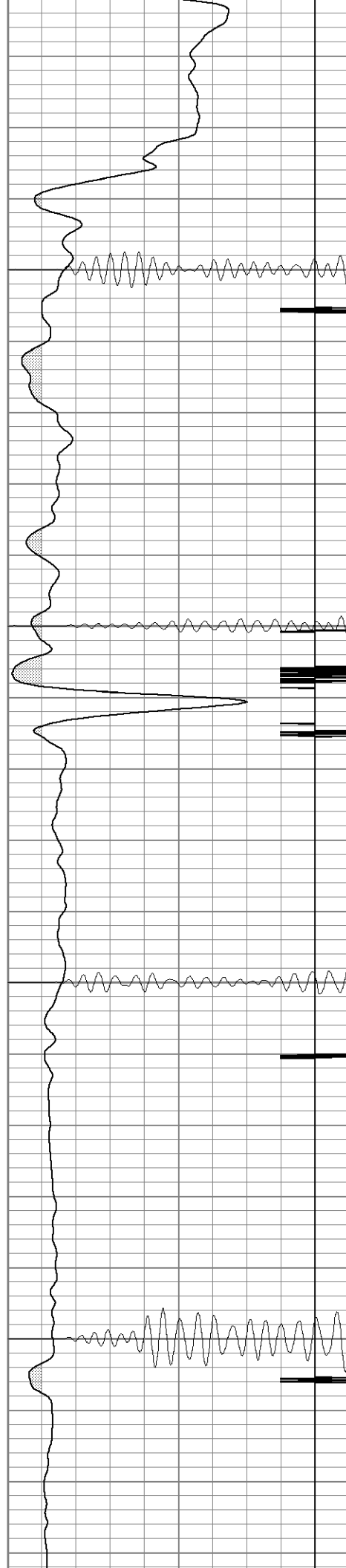


1350

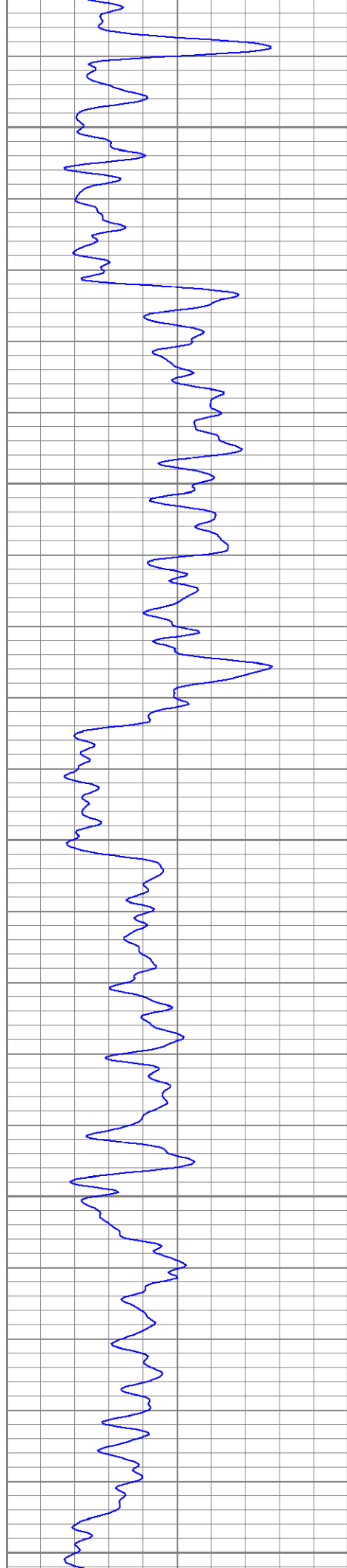
1400

1450

1500







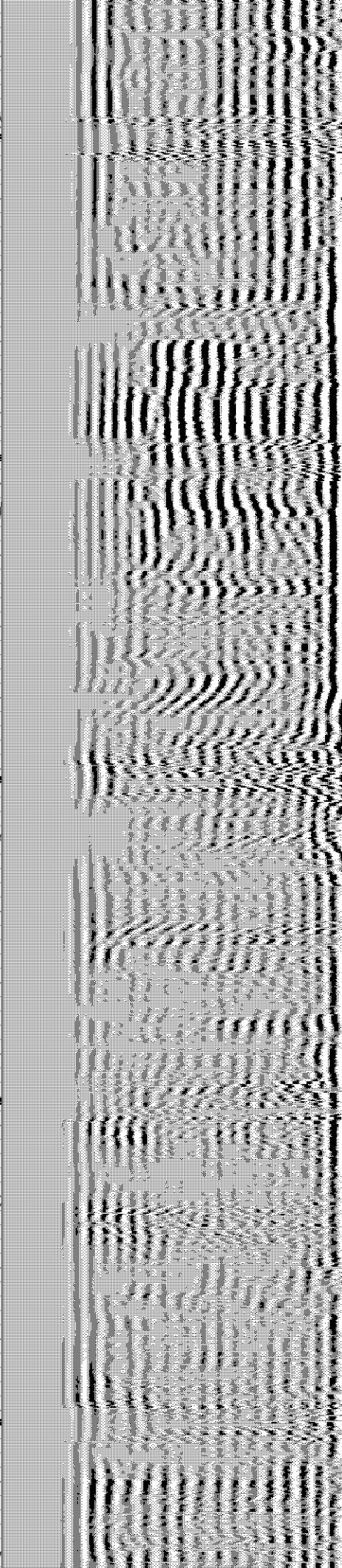
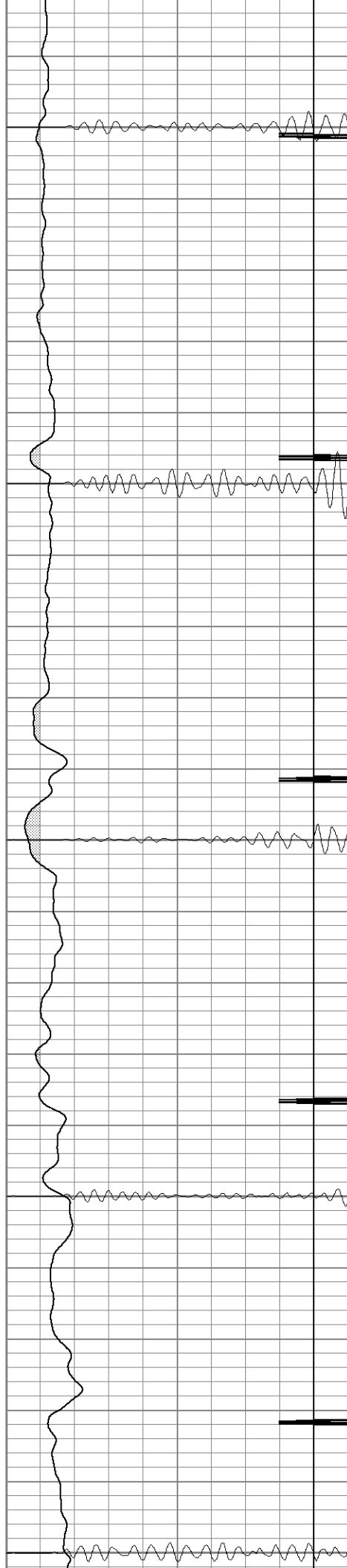
1550

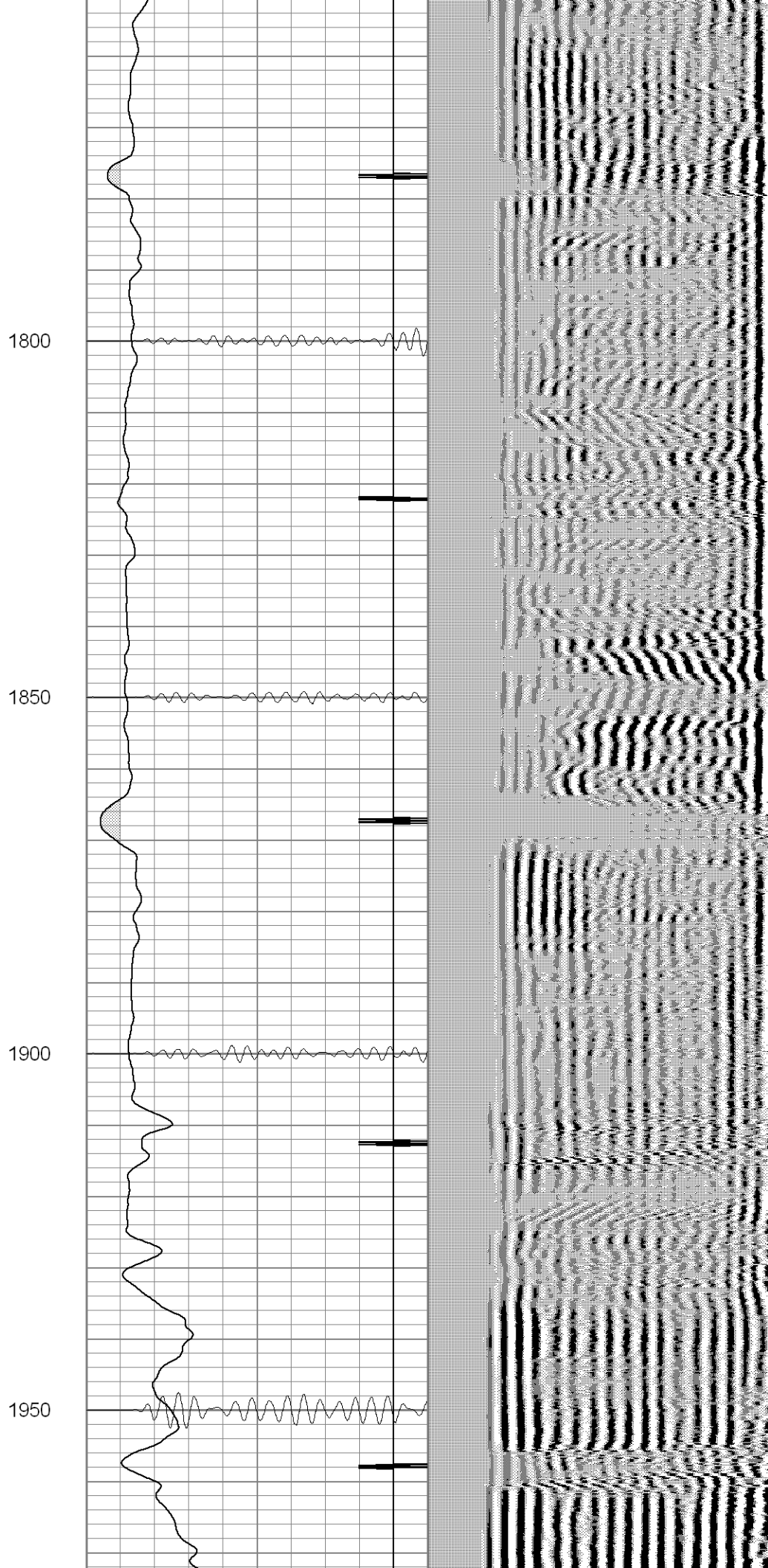
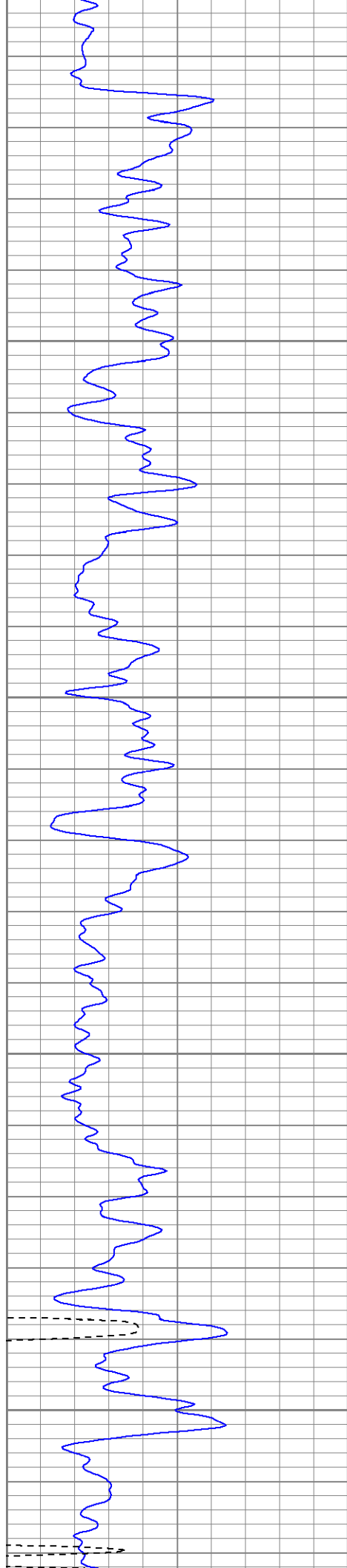
1600

1650

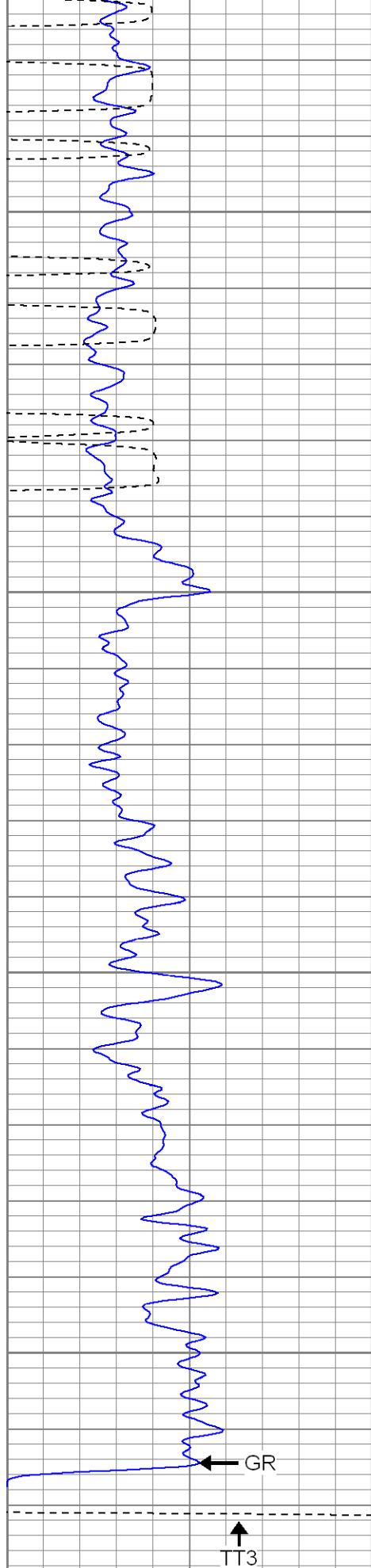
1700

1750

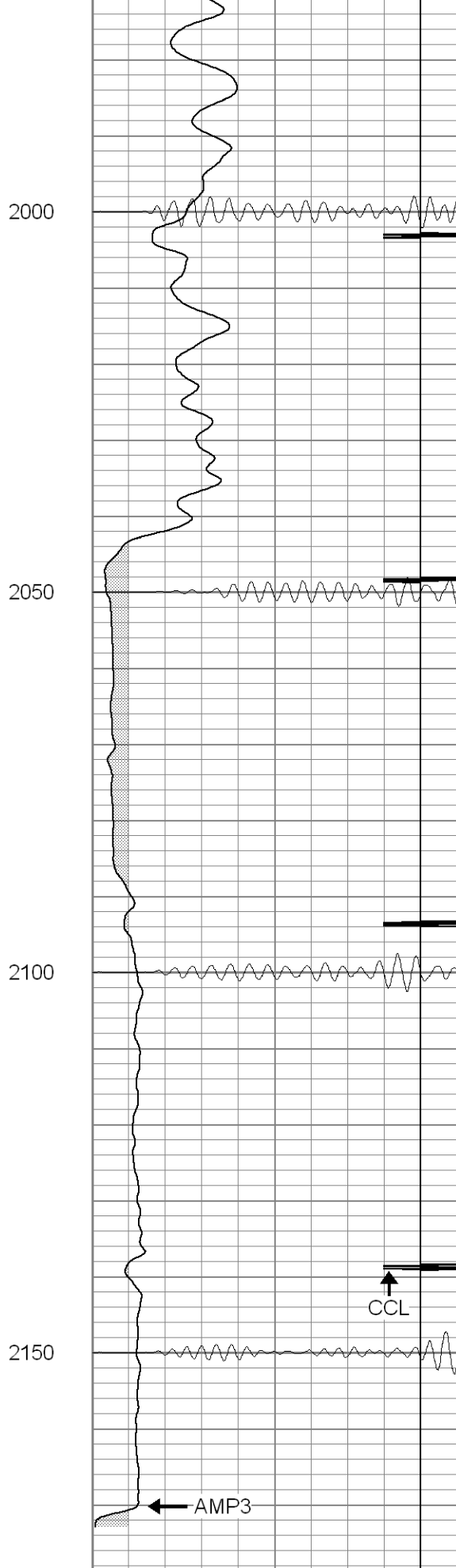




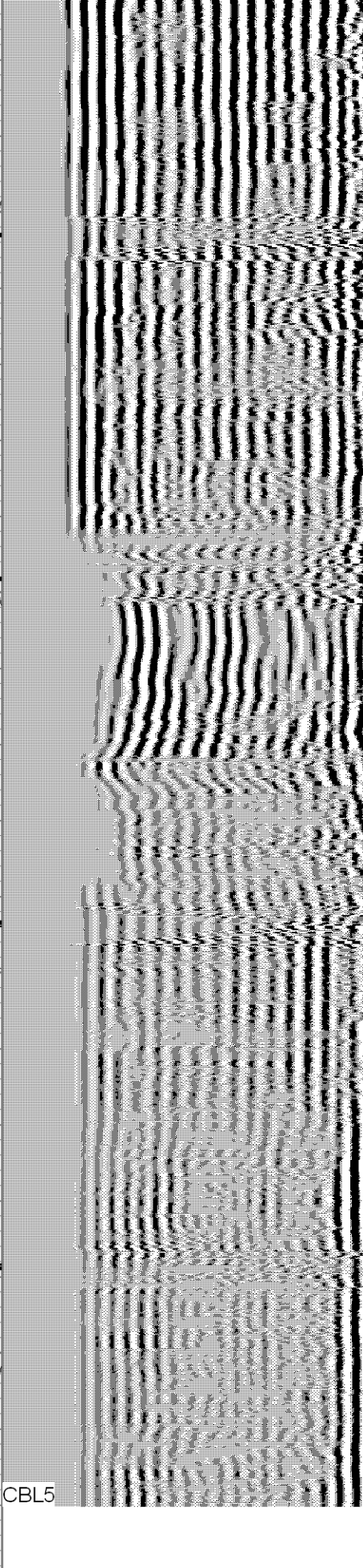




0	GR (GAPI)	200
400	TT3 (usec)	200



0	AMP3 (mV)	100
18	CCL	-2



200	Variable Density	1200
200	CBL 5	1200





SUPERIOR

Black Lick, Pa.  
Mercer, Pa.  
Wooster, Oh.  
Cleveland, Ok.  
Trinidad, Co.

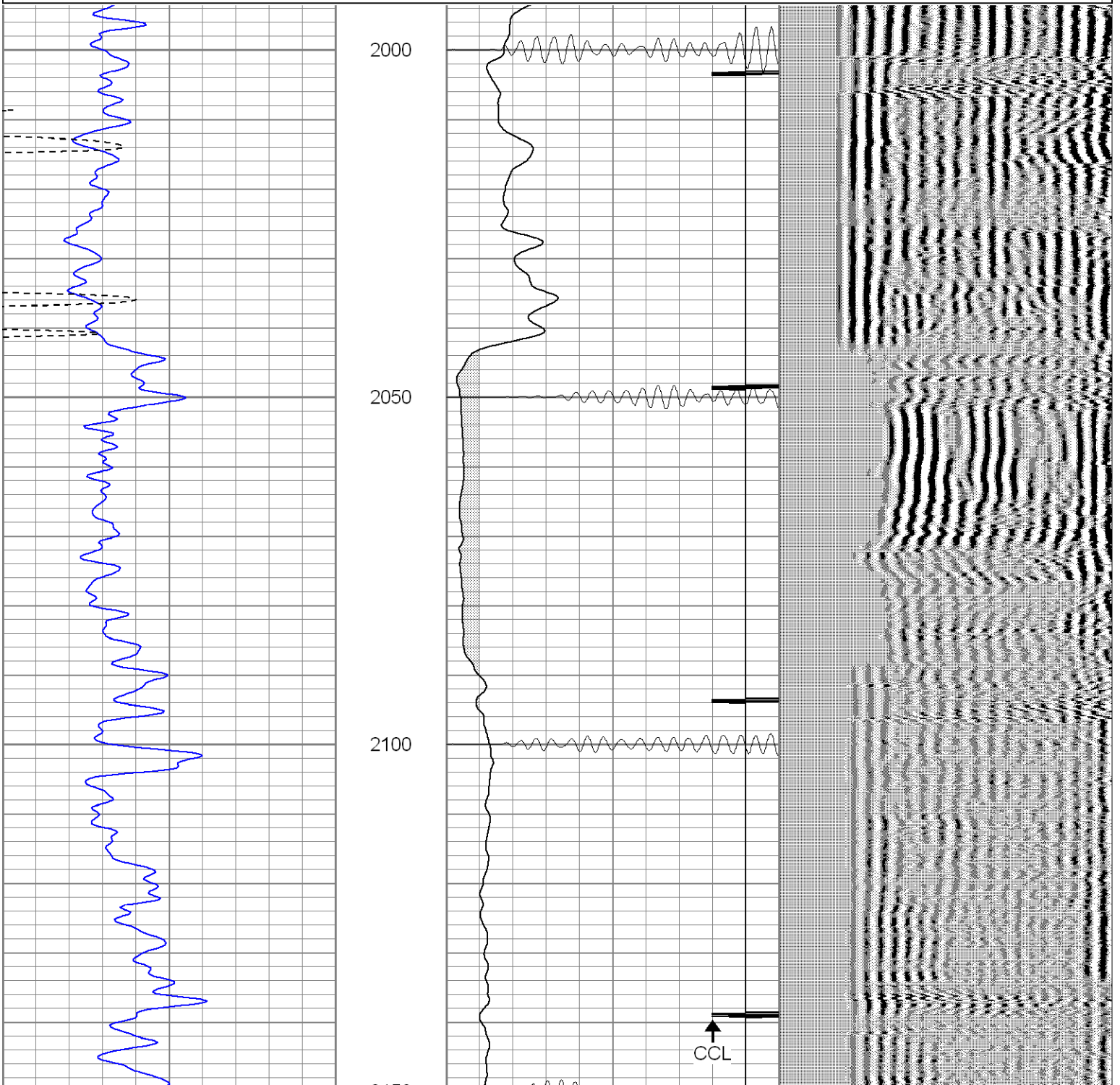
# Repeat Pass 0PSI

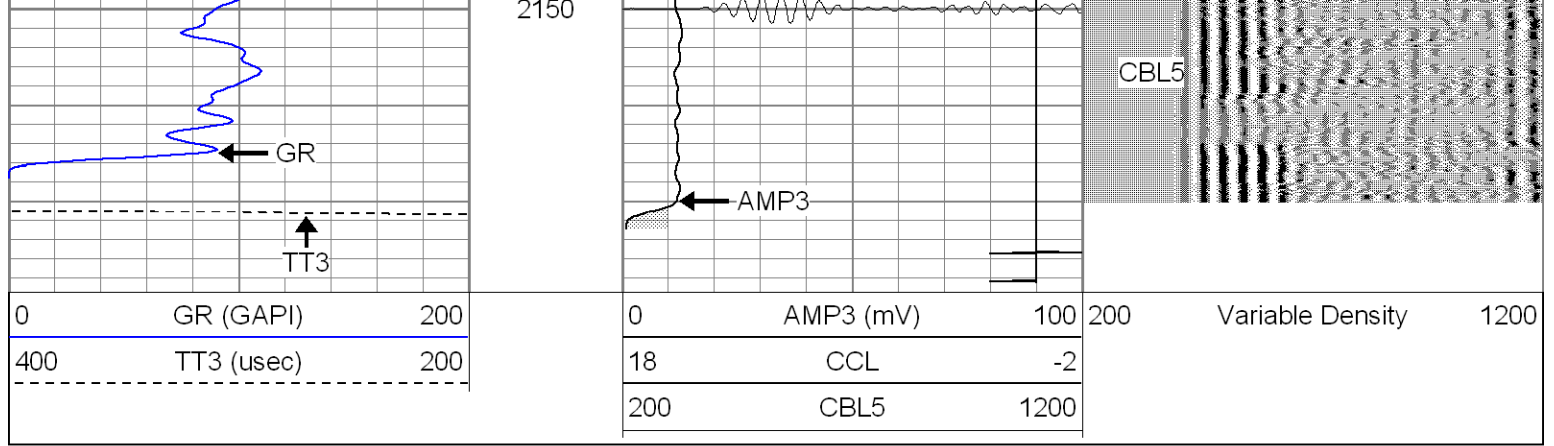
Database File: ac04-01b081508.db  
Dataset Pathname: pass1  
Presentation Format: cblrt  
Dataset Creation: Fri Aug 15 10:07:53 2008 by Log Open-Cased 071220  
Charted by: Depth in Feet scaled 1:240

0	GR (GAPI)	200
400	TT3 (usec)	200
-----		

0	AMP3 (mV)	100
18	CCL	-2
200	CBL5	1200

200 Variable Density 1200





Calibration Report				
Database File:	ac04-01b081508.db			
Dataset Pathname:	pass1			
Dataset Creation:	Fri Aug 15 10:07:53 2008 by Log Open-Cased 071220			
Cement Bond Log Calibration Report				
Serial Number:	titan6			
Tool Model:	T6			
Performed:	Wed Aug 13 09:50:49 2008			
Depth:	192.018	ft		
Casing Diameter:	5.5	in		
	3' Spacing	5' Spacing		
Signal Zero:	0	0	mV	
Calibrated Amplitude:	85	85	mV	
Reading at Signal Zero:	0.00498047	0.00493164	V	
Reading in Free Pipe:	1.423	1.75159	V	
Gain:	59.9428	48.6644		
Offset:	1	-0.239996		
Gamma Ray Calibration Report				
Serial Number:	titan6			
Tool Model:	T6			
Performed:	Mon Aug 11 08:32:31 2008			
Calibrator Value:	1.0	GAPI		
Background Reading:	0.0	cps		
Calibrator Reading:	1.0	cps		
Sensitivity:	1.0000	GAPI/cps		

Sensor	Offset (ft)	Schematic	Description	Len (ft)	OD (in)	Wt (lb)
GR	13.64		None	0.75	1.50	5.00
			GR-T6 (titan6)	2.52	2.44	25.00
WVF5	9.49		CBL-T6 (titan6)	7.23	2.25	110.00
WVF3	8.49					

