



**SUPERIOR**  
Black Lick, Pa.  
Mercer, Pa.  
Wooster, Oh.  
Cleveland, Ok.  
Trinidad, Co.

# CEMENT BOND GAMMA RAY 1000 PSI

Company Well Apache Canyon 04-01  
Field Purgatorie River  
County Las Animas  
State CO

Company XTO Energy Inc.  
Well Apache Canyon 04-01  
Field Purgatorie River  
County Las Animas State CO

Location: API # : 05 071 09633 00

386' FNL & 1279' FEL

SEC 04 TWP 34S RGE 67W

Permanent Datum Ground level Elevation 7591'  
Log Measured From Ground Level  
Drilling Measured From Ground Level

Other Services  
TEMP  
Elevation  
K.B. -----  
D.F. -----  
G.L. 7591'

Date				8/12/08			
Run Number				One			
Depth Driller				2250'			
Depth Logger				2182'			
Bottom Logged Interval				2178'			
Top Log Interval				Surf.			
Open Hole Size				7 7/8"			
Type Fluid				water			
Density / Viscosity				///			
Max. Recorded Temp.				140F			
Estimated Cement Top				1306'			
Time Well Ready				ROA			
Time Logger on Bottom				11:00			
Equipment Number				0703			
Location				Trinidad			
Recorded By				Worley			
Witnessed By	Mr. Gourdin						
Borehole Record				Tubing Record			
Run Number	Bit	From	To	Size	Weight	From	To
Casing Record	Size			Wgt/Ft	Top	Bottom	
Surface String	8 5/8"				00	500'	
Prot. String							
Production String	5 1/2"				00	2223'	
Liner							

<<< Fold Here >>>

All interpretations are opinions based on inferences from electrical or other measurements and we cannot and do not guarantee the accuracy or correctness of any interpretation, and we shall not, except in the case of gross or willful negligence on our part, be liable or responsible for any loss, costs, damages, or expenses incurred or sustained by anyone resulting from any interpretation made by any of our officers, agents or employees. These interpretations are also subject to our general terms and conditions set out in our current Price Schedule.

## Comments

First Bosque entrance to Cherry Canyon, past Compressor station 5, stay on main road, at the hard switchback stay left, at fork stay right, drive thru the GE 33-15, dead end on location.

CBL ran under 1000 PSI.



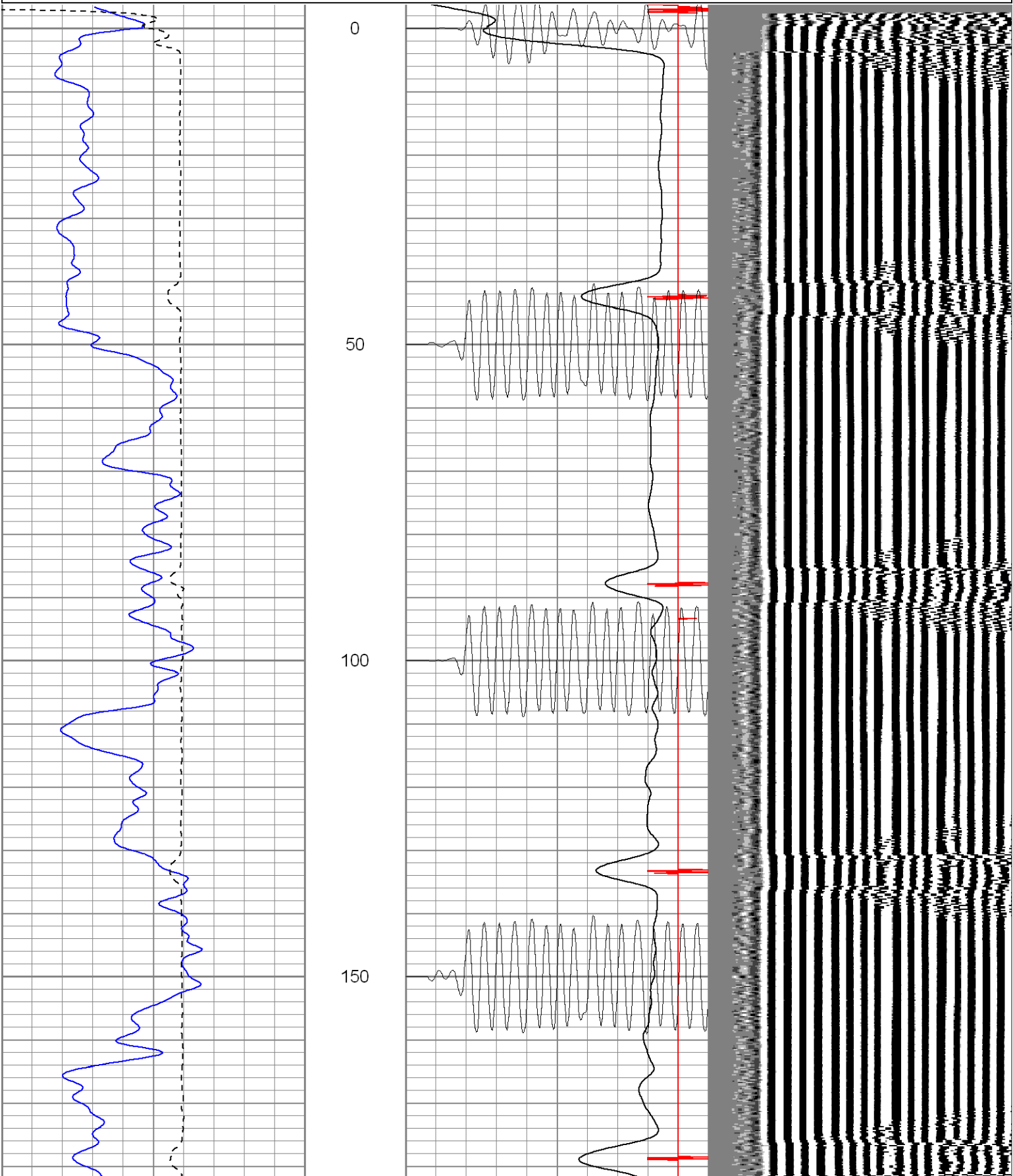
**SUPERIOR**

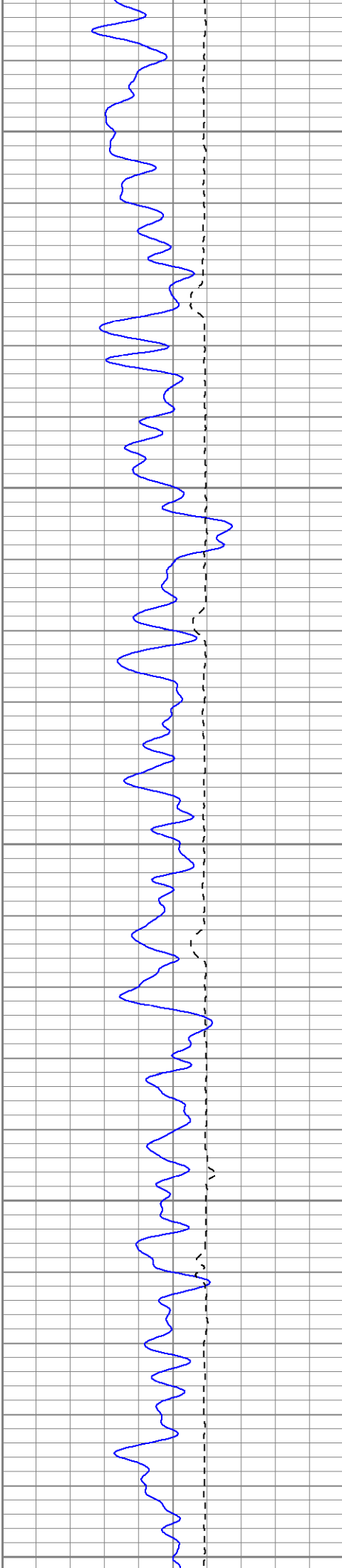
Black Lick, Pa.  
Mercer, Pa.  
Wooster, Oh.  
Cleveland, Ok.  
Trinidad, Co.

# Main Pass 1000 PSI

Database File: ac04-01b81208.db  
Dataset Pathname: pass2.2  
Presentation Format: sclbrt  
Dataset Creation: Tue Aug 12 12:10:12 2008 by Calc Open-Cased 071220  
Charted by: Depth in Feet scaled 1:240

0	GR (GAPI)	200	0	AMP3FT (mV)	100	200	WVF5FT	1200
400	TT3FT (usec)	200	18	CCL	-2			
			200	WVF5FT	1200			





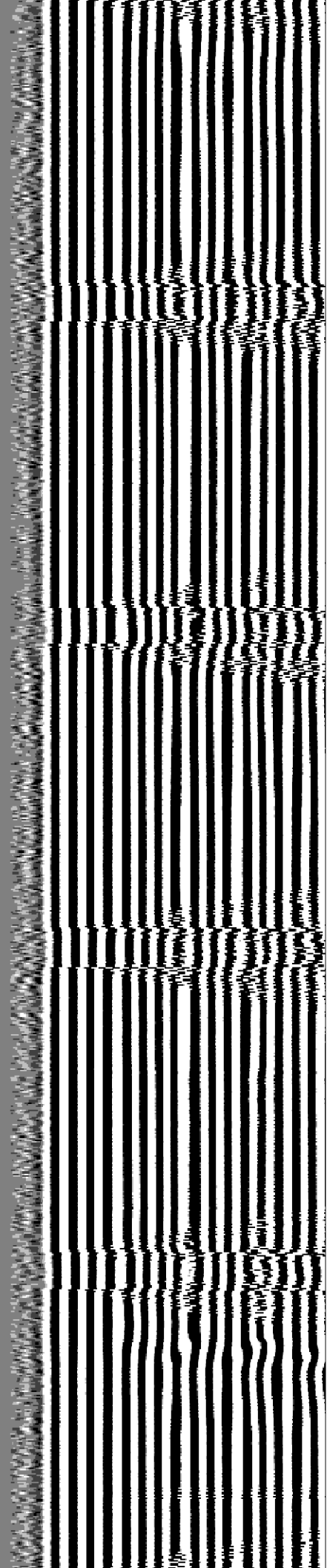
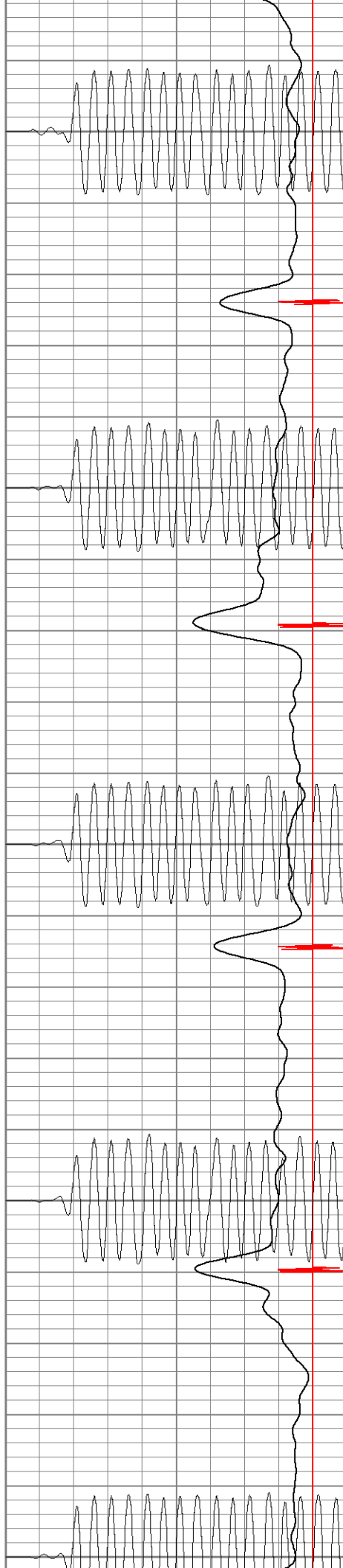
200

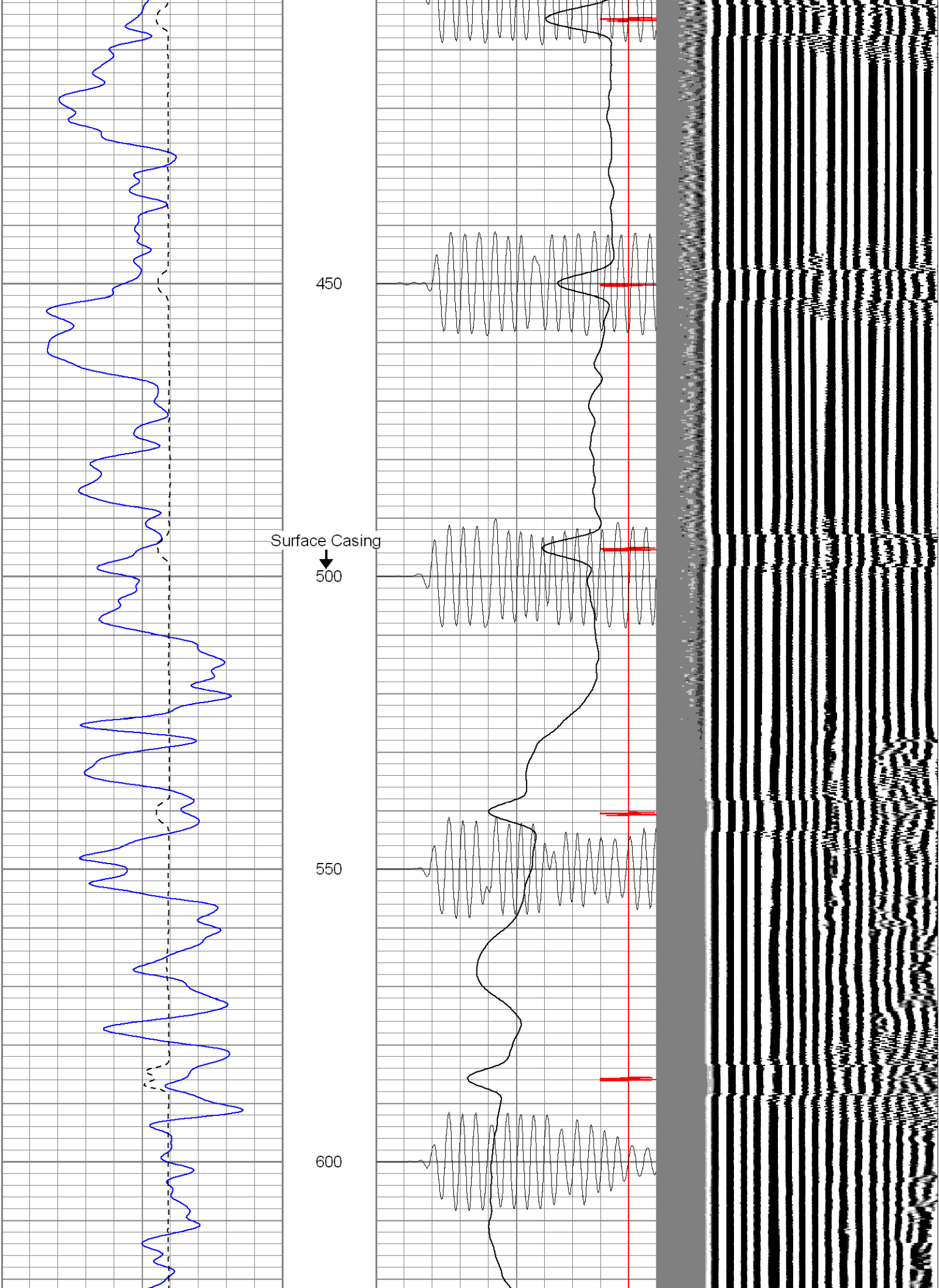
250

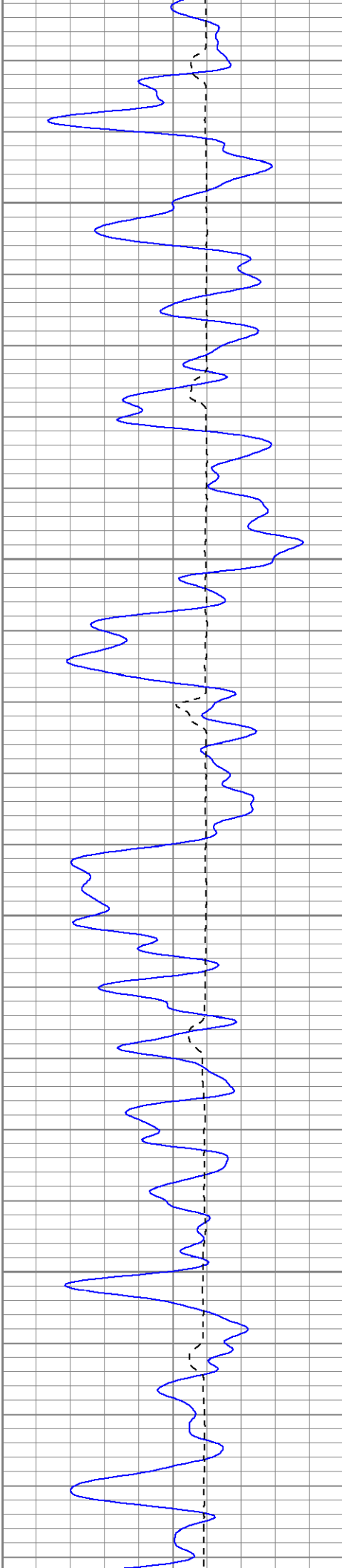
300

350

400





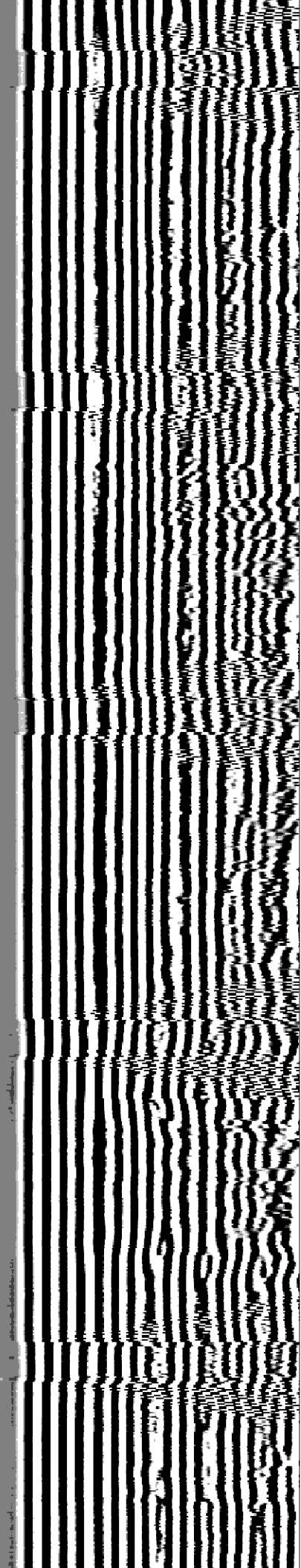
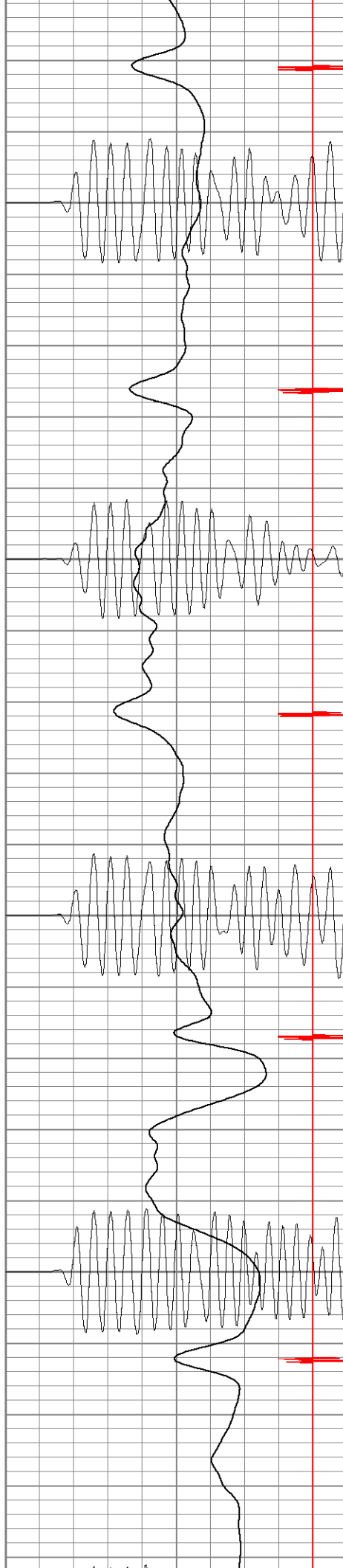


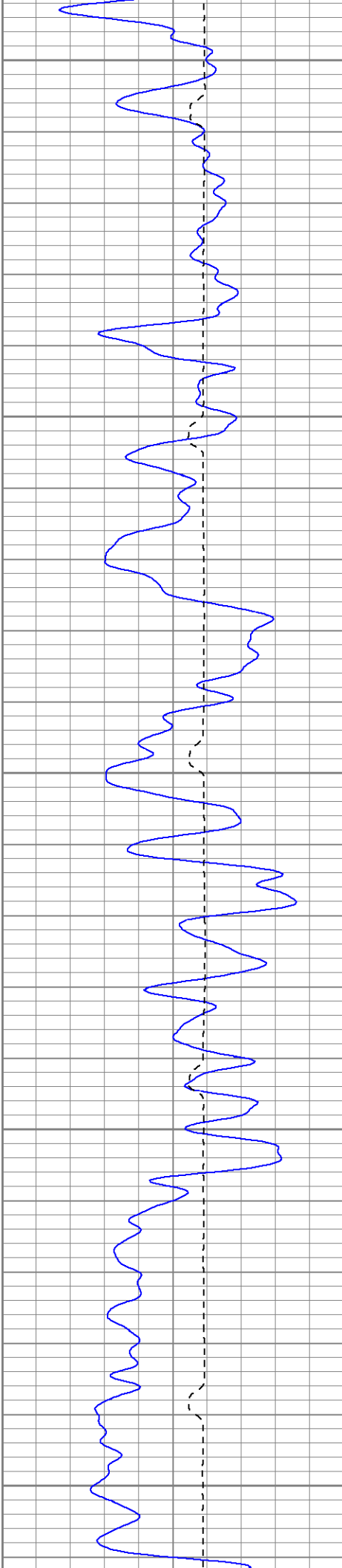
650

700

750

800





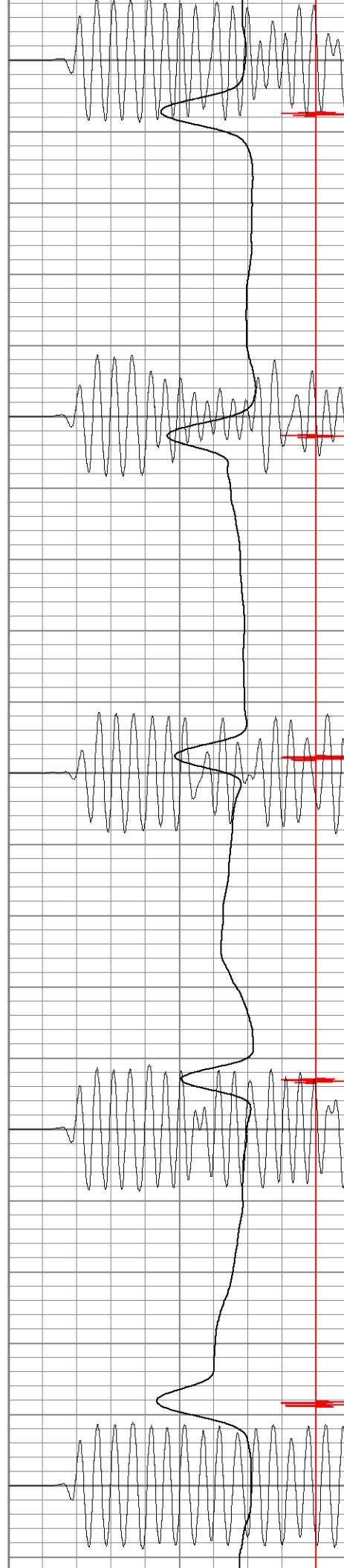
850

900

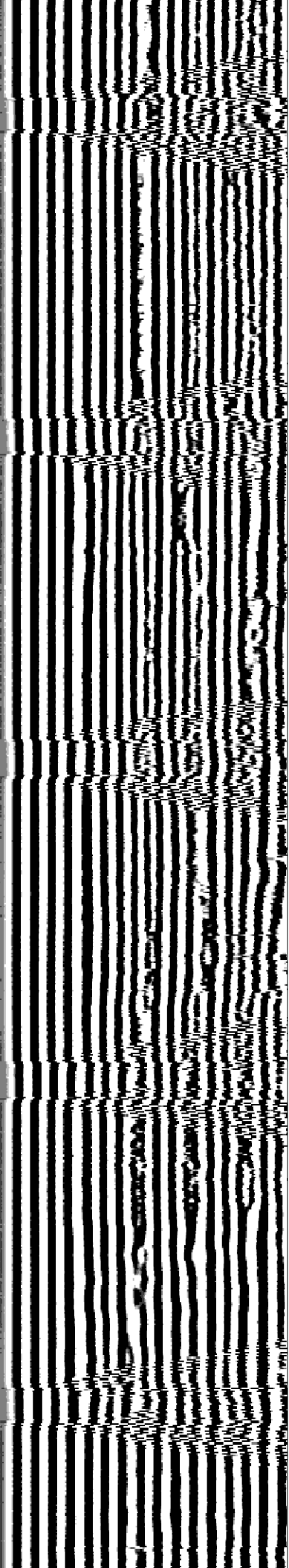
950

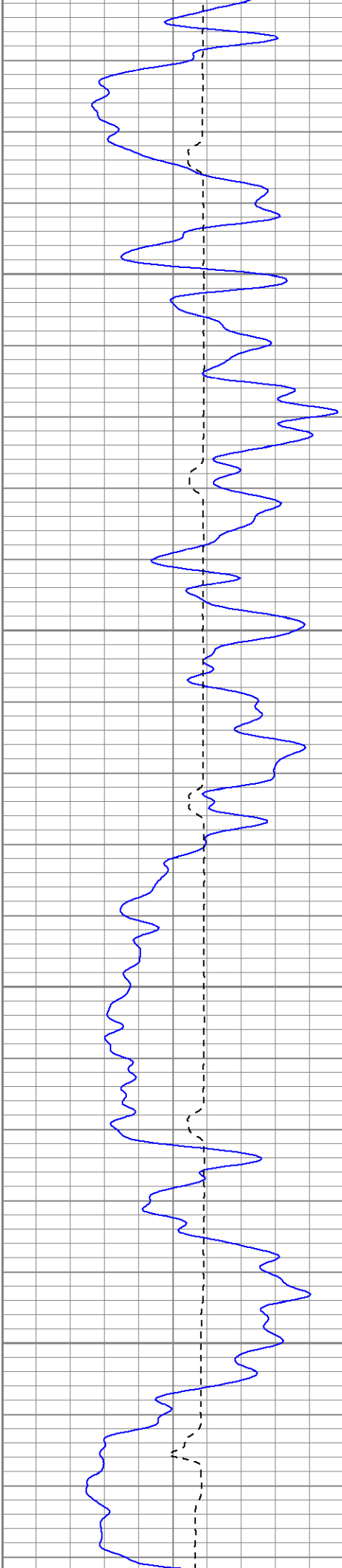
1000

1050



850 900 950 1000 1050



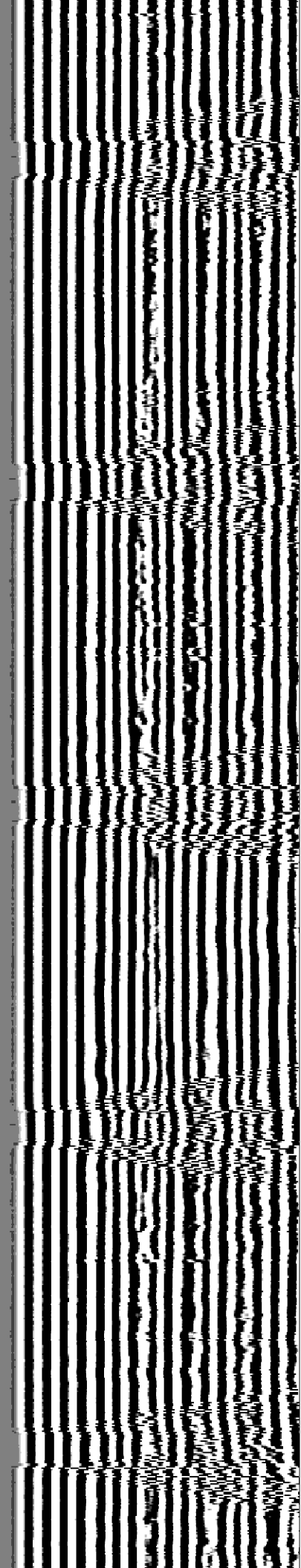
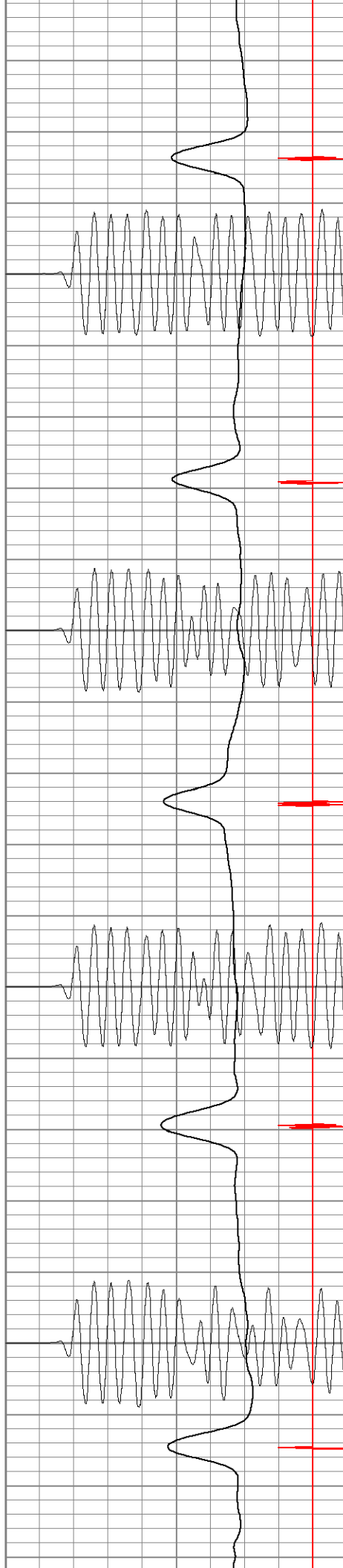


1100

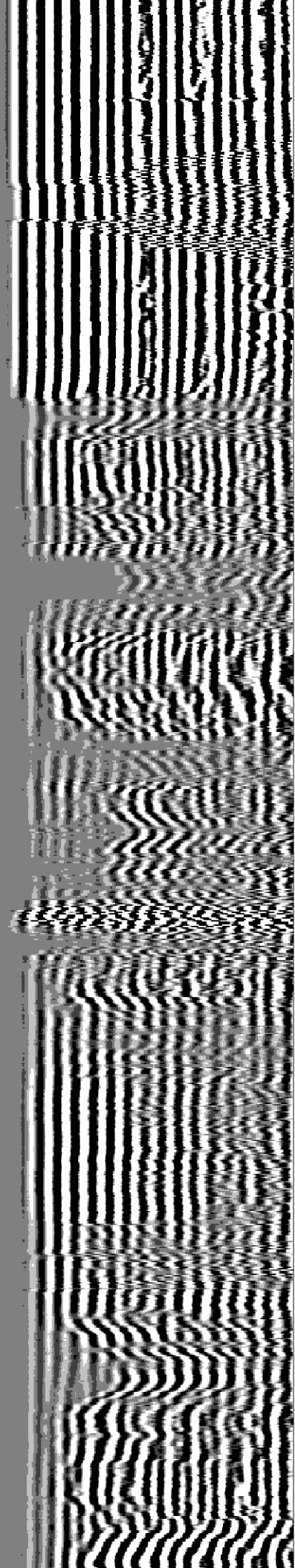
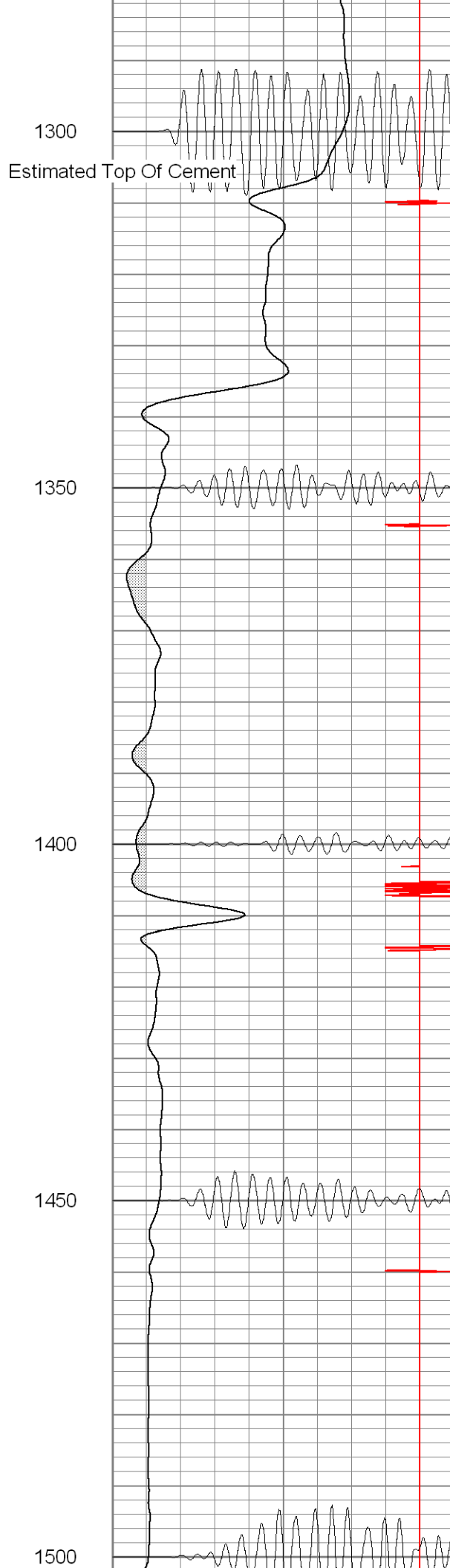
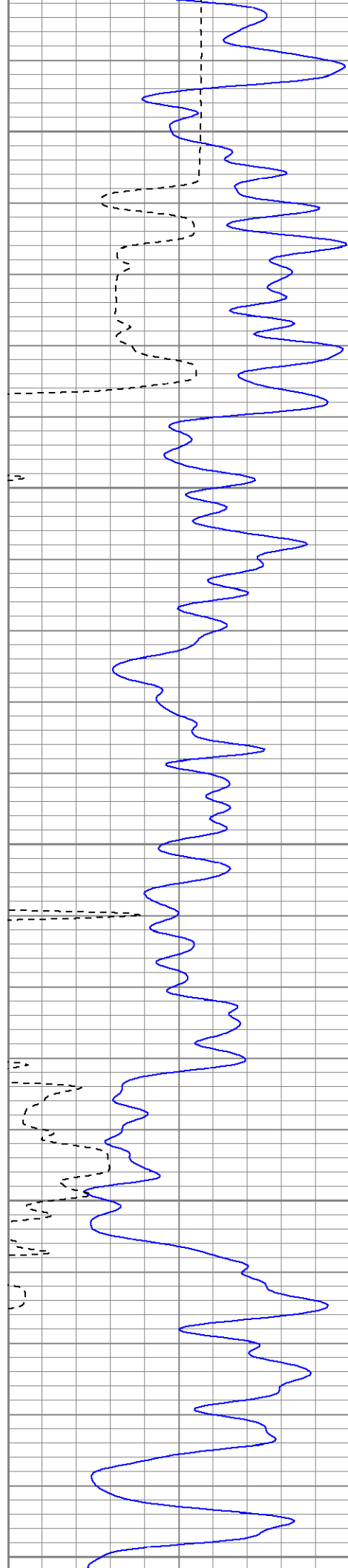
1150

1200

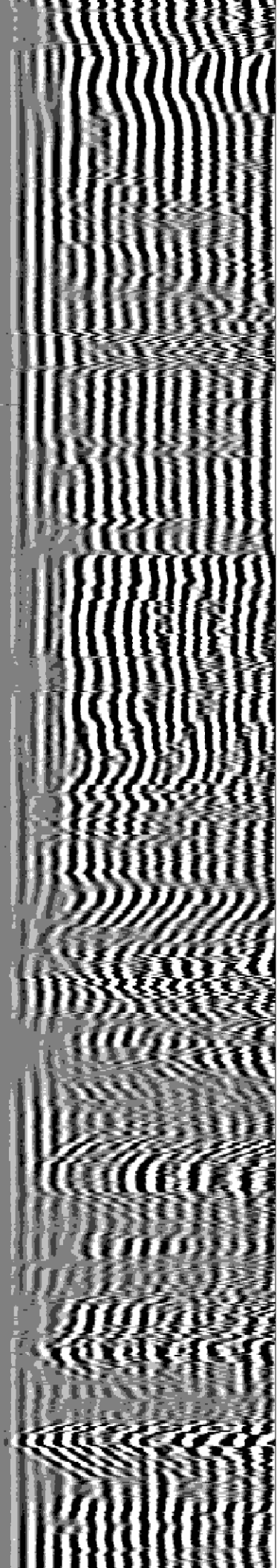
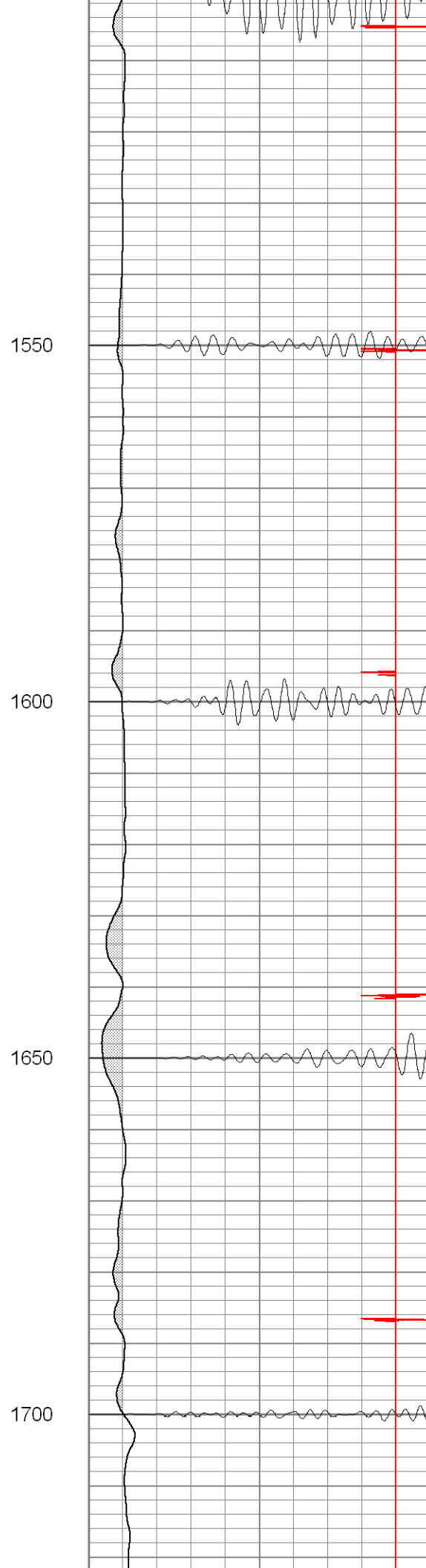
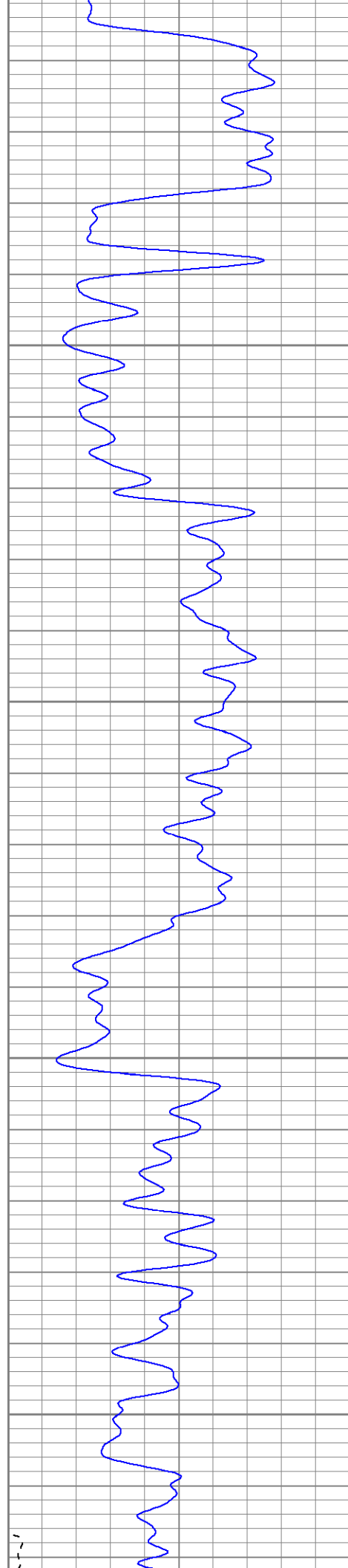
1250

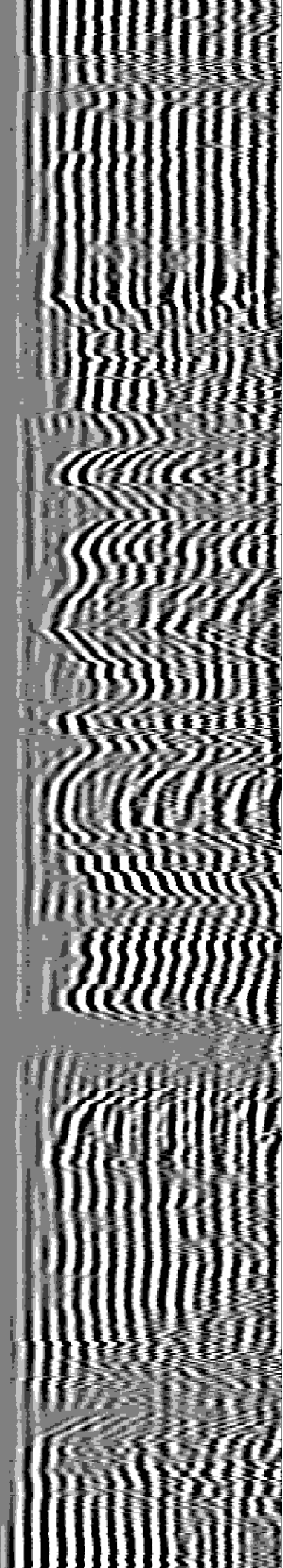
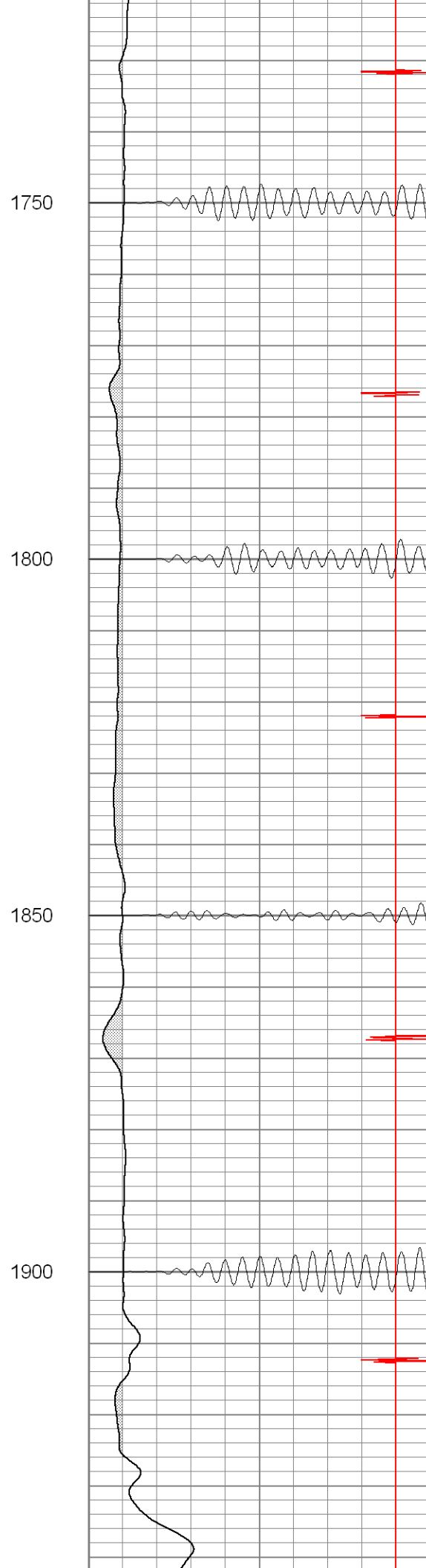
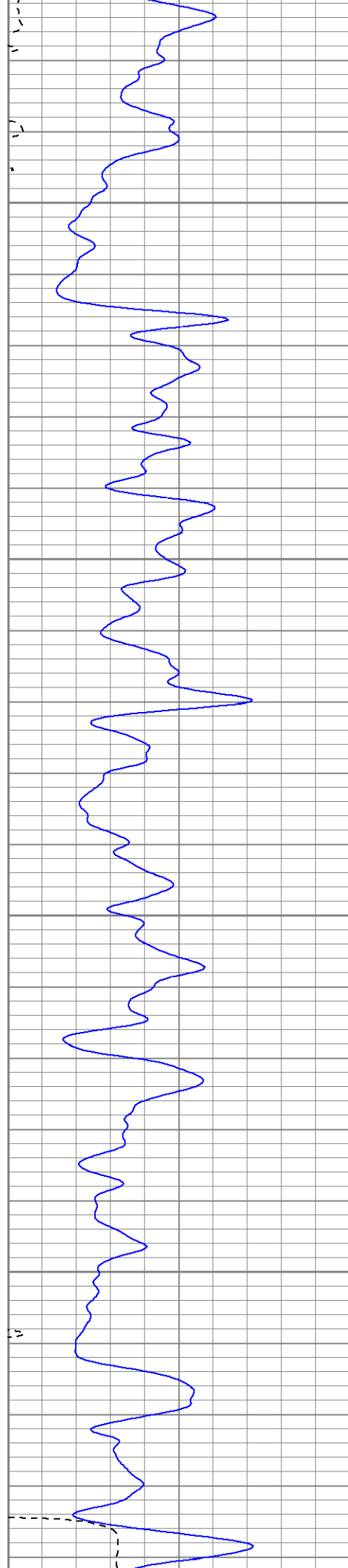


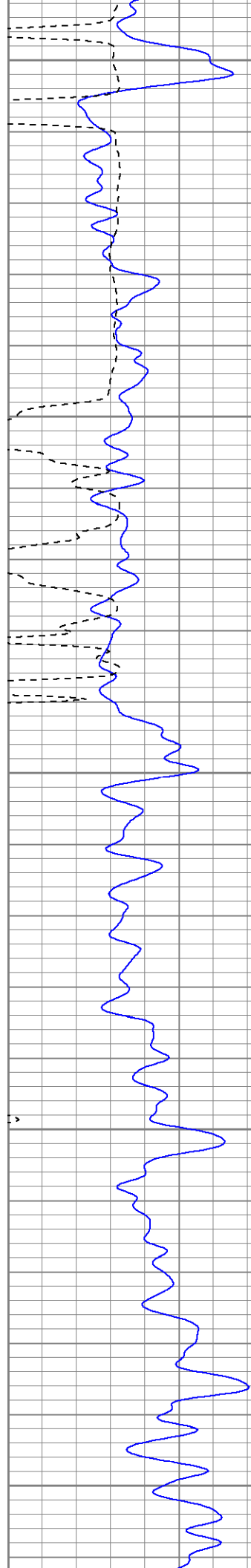












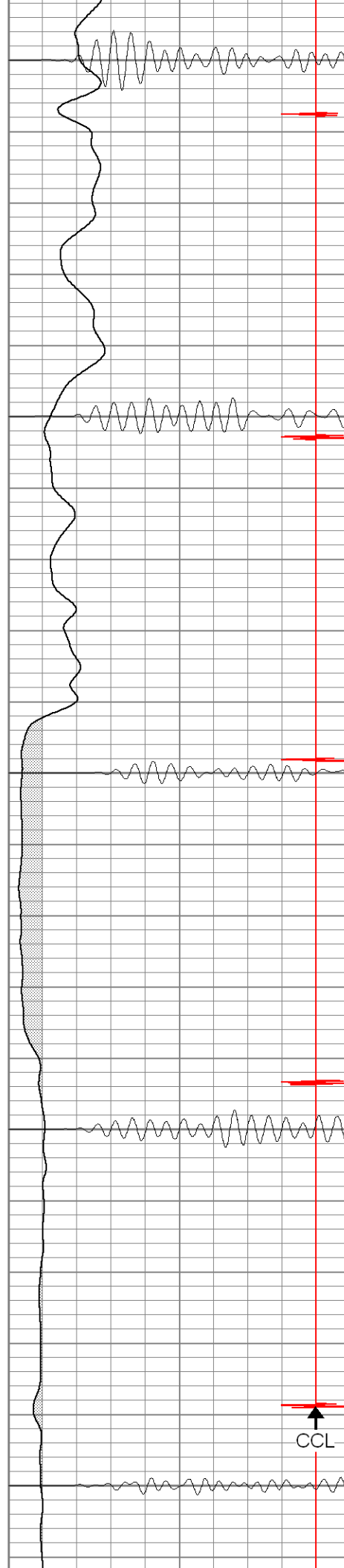
1950

2000

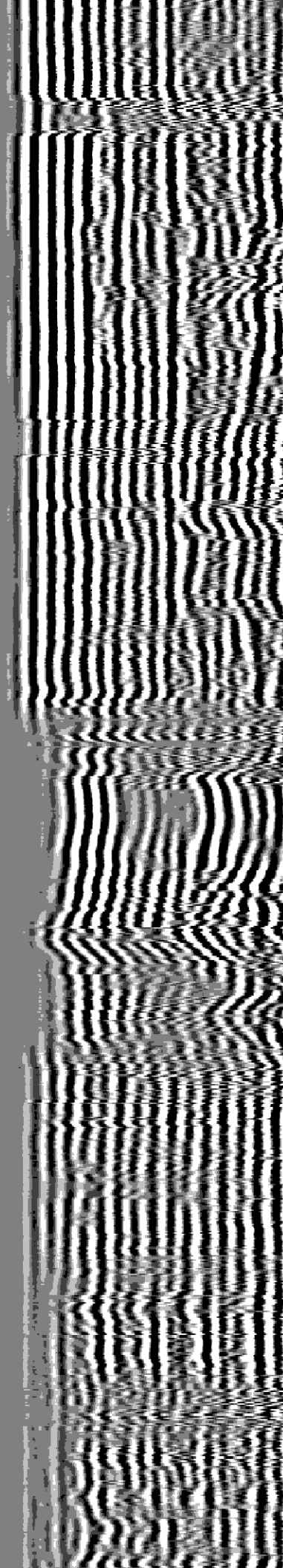
2050

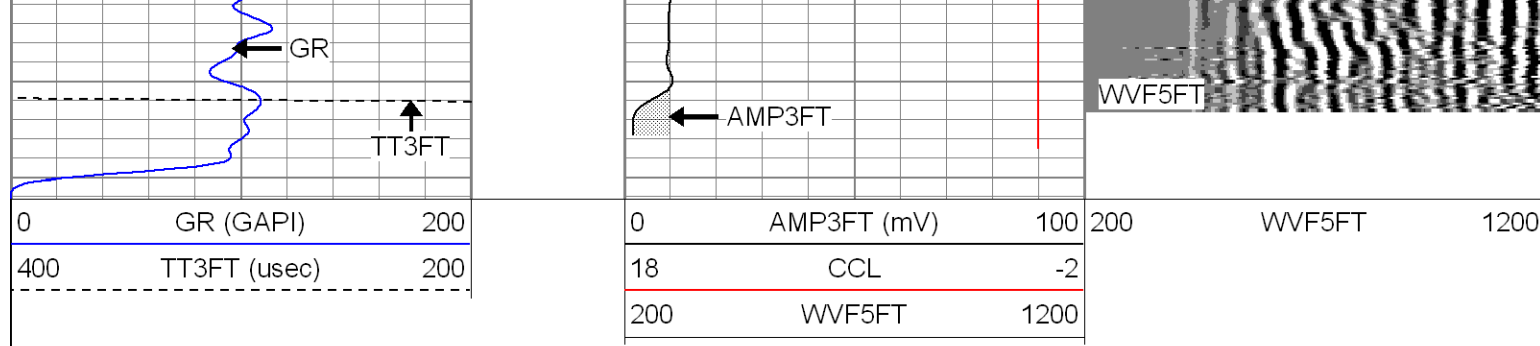
2100

2150



CCL



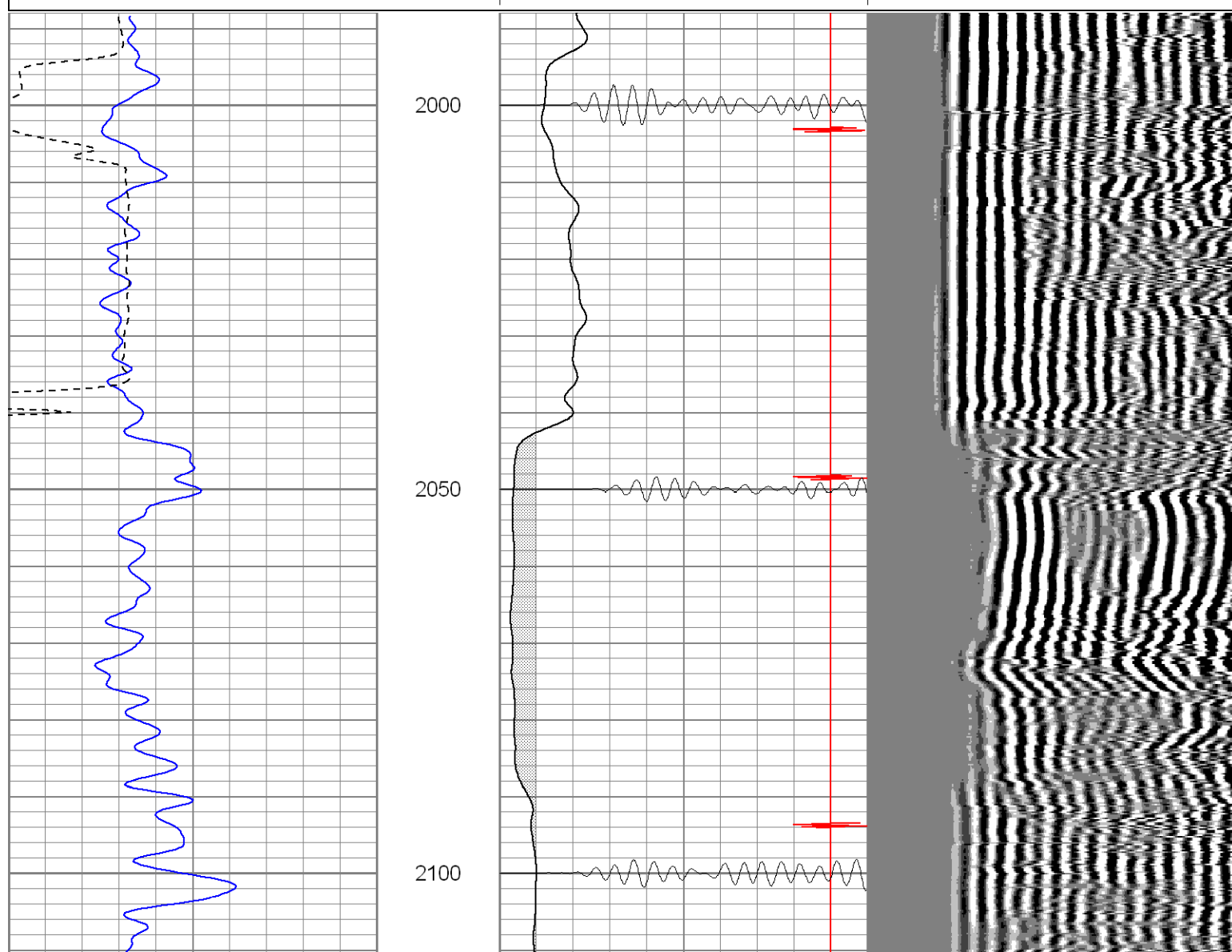
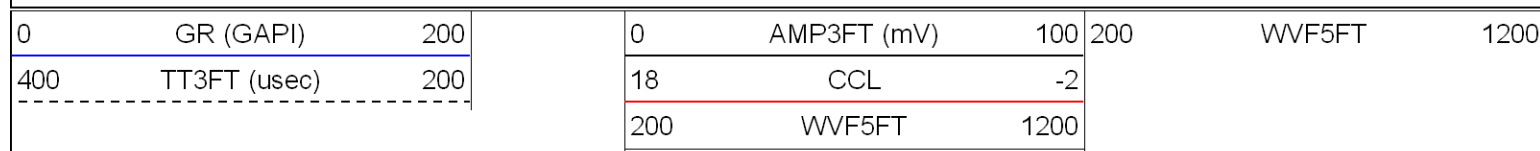


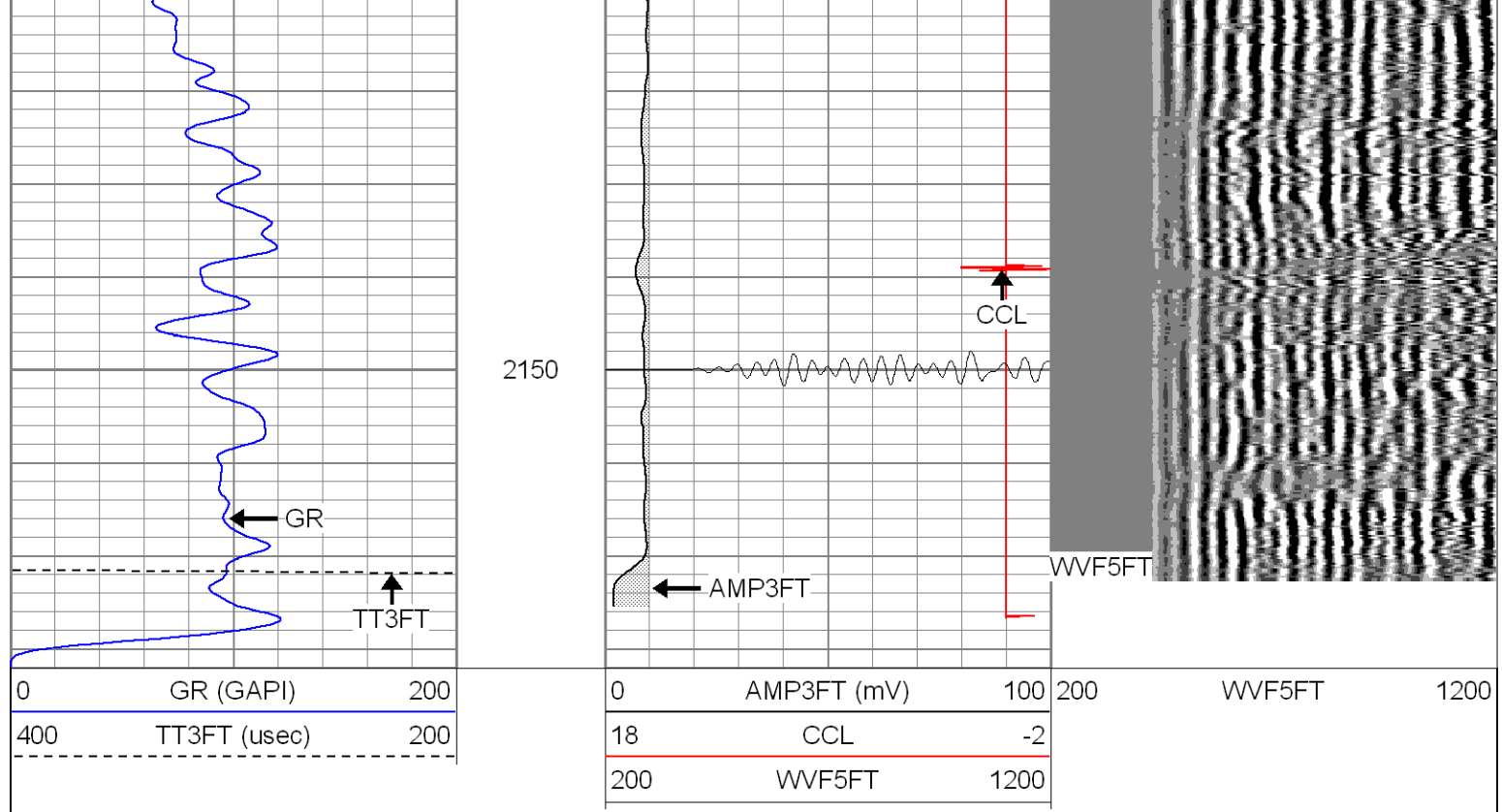
**SUPERIOR**

Black Lick, Pa.  
Mercer, Pa.  
Wooster, Oh.  
Cleveland, Ok.  
Trinidad, Co.

# Repeat Section 0 PSI

Database File: ac04-01b81208.db  
Dataset Pathname: pass1.2  
Presentation Format: scblrt  
Dataset Creation: Tue Aug 12 12:12:43 2008 by Calc Open-Cased 071220  
Charted by: Depth in Feet scaled 1:240





### Calibration Report

Database File: ac04-01b81208.db  
 Dataset Pathname: pass1.2  
 Dataset Creation: Tue Aug 12 12:12:43 2008 by Calc Open-Cased 071220

### Gamma Ray Calibration Report

Serial Number: 275D\_with\_INC  
 Tool Model: 275D\_INC  
 Performed: Tue Aug 12 10:57:05 2008

Calibrator Value: 1.0 GAPI

Background Reading: 0.0 cps  
 Calibrator Reading: 1.0 cps

Sensitivity: 1.0000 GAPI/cps

### Inclinometer Calibration Report

Performed: Mon Apr 28 03:49:58 2008

	Low Read.	High Read.	Low Ref.	High Ref.	
X Accelerometer	-3579.00	3617.00	-1.00	1.00	gee
Y Accelerometer	-3671.40	3529.80	-1.00	1.00	gee
Z Accelerometer					

### Segmented Cement Bond Log Calibration Report

Serial Number: 080321  
 Tool Model: ProbeRadII

Calibration Casing Diameter: 5.500 in  
 Calibration Depth: 118.492 ft

Master Calibration, performed Tue Aug 12 10:55:50 2008:

	Raw (v)		Calibrated (mv)		Results	
	Zero	Cal	Zero	Cal	Gain	Offset
3'	-0.040	1.750	0.000	85.000	47.486	1.899
CAL	-0.040	1.626				
5'	-0.040	1.716	0.000	85.000	48.418	1.937
SUM						
S1	-0.040	1.576	0.000	85.000	52.599	2.104
S2	-0.040	1.581	0.000	85.000	52.444	2.098
S3	-0.040	1.672	0.000	85.000	49.656	1.986
S4	-0.040	1.754	0.000	85.000	47.389	1.896
S5	-0.040	1.798	0.000	85.000	46.248	1.850
S6	-0.040	1.800	0.000	85.000	46.207	1.848
S7	-0.040	1.817	0.000	85.000	45.765	1.831
S8	-0.040	1.725	0.000	85.000	48.150	1.926

Sensor	Offset (ft)	Schematic	Description	Len (ft)	OD (in)	Wt (lb)
			CENT-X (2)	3.00	1.69	25.00
WVF3FT	10.40					
WVFS1	10.40					
WVFS2	10.40					
WVFS3	10.40		SCBL-ProbeRadII (080321) Probe 2 3/4 Radial	8.75	2.75	106.50
WVFS4	10.40					
WVFS5	10.40					
WVFS6	10.40					
WVFS7	10.40					
WVFS8	10.40					
WVF5FT	9.40					
WVFCAL	6.15					
CCL	5.15		GR-275D_INC (275D_with_INC) 2-3/4" GR-CCL with Inclination	4.50	2.75	50.00
ACCX	3.48					
ACCY	3.48					
ACCZ	3.48					
GR	2.48		CENT-Prod (P1)	1.65	1.69	1.00
		Dataset:	ac04-01b81208.db: field/well/run1/pass1.2			
		Total Length:	17.90 ft			
		Total Weight:	182.50 lb			
		O.D.	2.75 in			