



SUPERIOR
Black Lick, Pa.
Mercer, Pa.
Wooster, Oh.
Cleveland, Ok.
Trinidad, Co.

CEMENT BOND GAMMA RAY LOG

Company XTO Energy Inc.
Well Golden Eagle 33-09
Field Purgatorie River
County Las Animas
State CO

Company XTO Energy Inc.
Well Golden Eagle 33-09
Field Purgatorie River
County Las Animas State CO

Location: API #: 05 071 09484 00
1731' FSL & 567' FEL
SEC 33 TWP 33S RGE 67W
Permanent Datum Ground Level Elevation 7516'
Log Measured From Ground Level
Drilling Measured From Ground Level
Other Services
Pressure Control/
temp.
Elevation
K.B. -----
D.F. -----
G.L. 7516'

Date	3-5-08						
Run Number	One						
Depth Driller	2209'						
Depth Logger	2101'						
Bottom Logged Interval	2100'						
Top Log Interval	Surface						
Open Hole Size	7 7/8"						
Type Fluid	Water						
Density / Viscosity	///						
Max. Recorded Temp.	130F						
Estimated Cement Top	30'						
Time Well Ready	Portable Mast						
Time Logger on Bottom	4:30PM						
Equipment Number	T0698						
Location	Trinidad						
Recorded By	J Sisneros						
Witnessed By	Mr. Steve Dominguez						
Borehole Record						Tubing Record	
Run Number	Bit	From	To	Size	Weight	From	To
Casing Record	Size		Wgt/Ft		Top		Bottom
Surface String	8 5/8"				00		452'
Prot. String							
Production String	5 1/2"				00		N/A
Liner							

<<< Fold Here >>>

All interpretations are opinions based on inferences from electrical or other measurements and we cannot and do not guarantee the accuracy or correctness of any interpretation, and we shall not, except in the case of gross or willful negligence on our part, be liable or responsible for any loss, costs, damages, or expenses incurred or sustained by anyone resulting from any interpretation made by any of our officers, agents or employees. These interpretations are also subject to our general terms and conditions set out in our current Price Schedule.

Comments

1st Bosque Entrance, turn right up Cherry Canyon,
follow main rd. past compressor#5, at 4-waystay left,
@ 3-way stay left down hill to location.

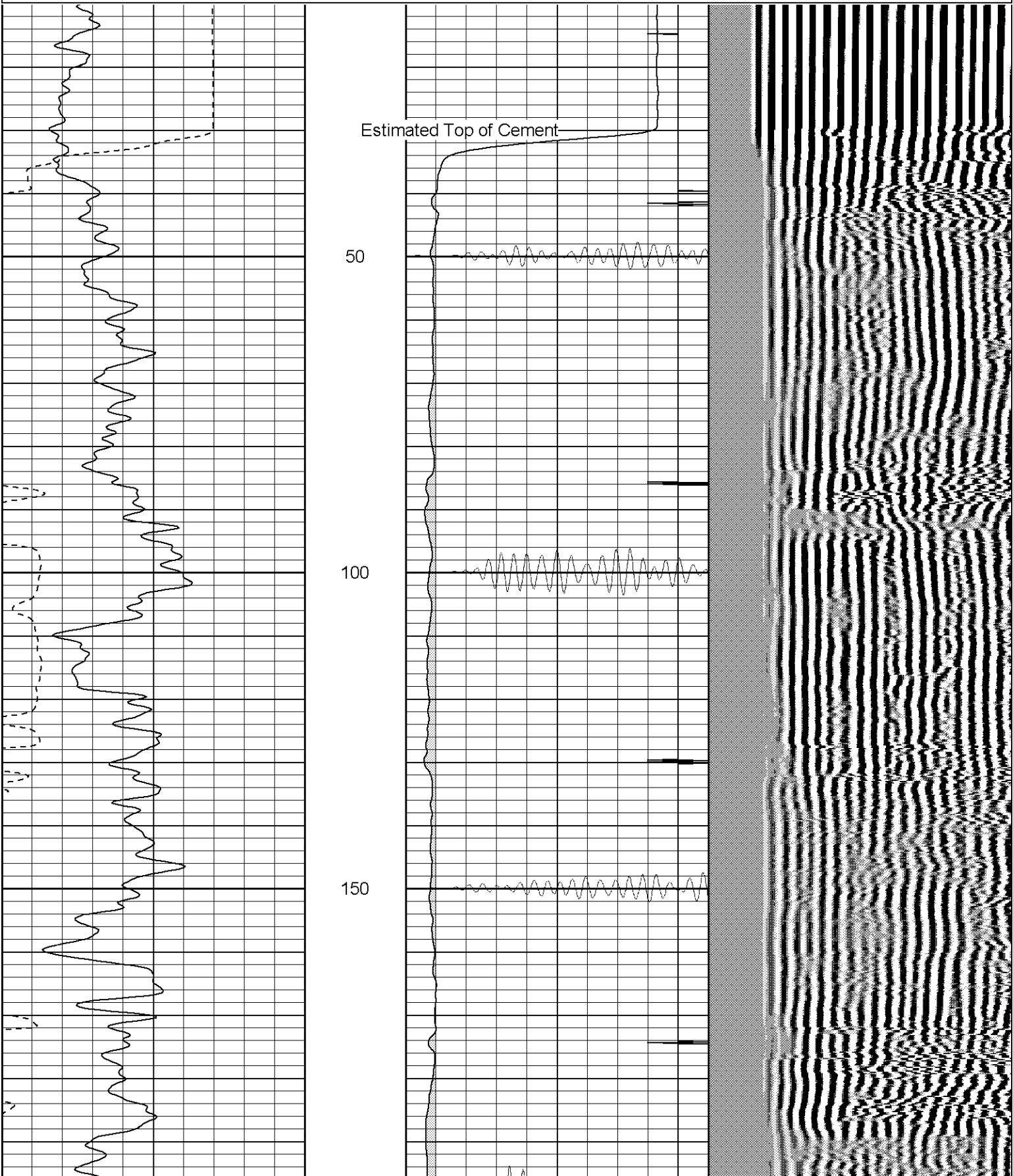


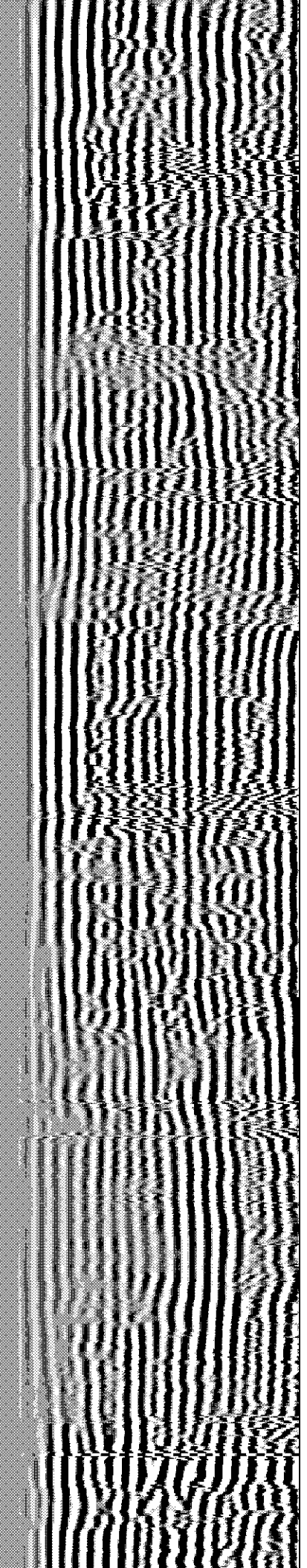
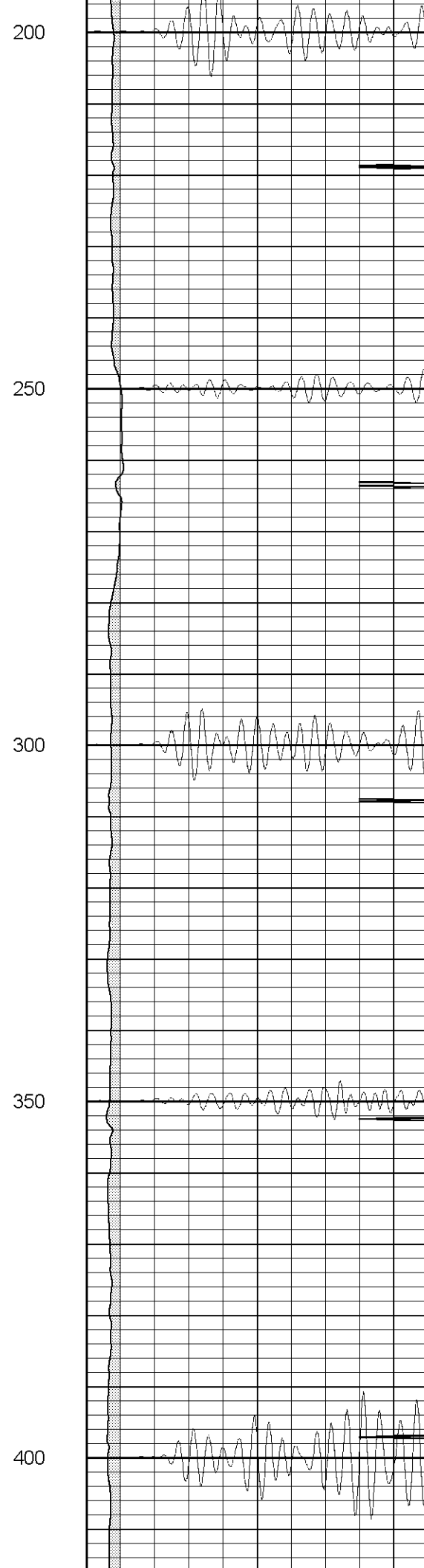
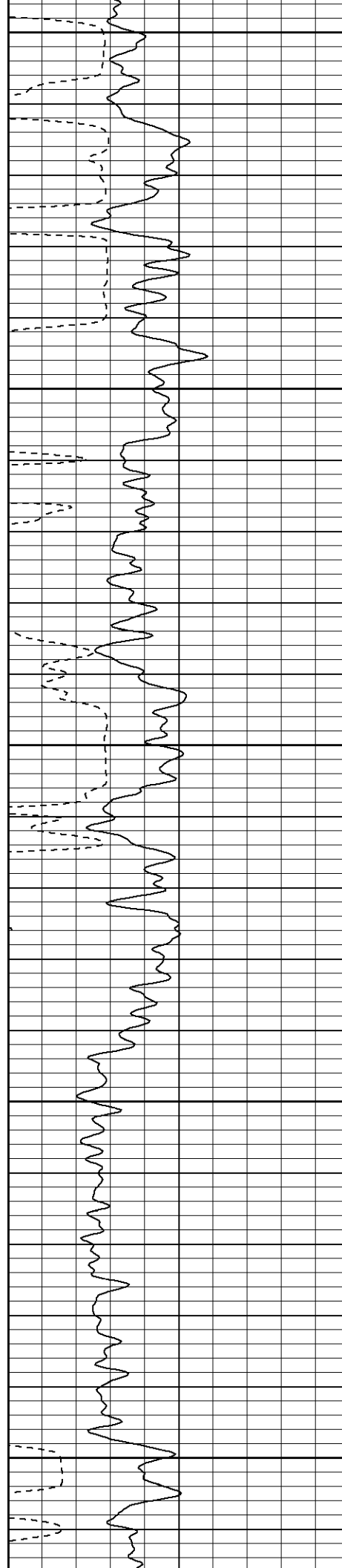
SUPERIOR

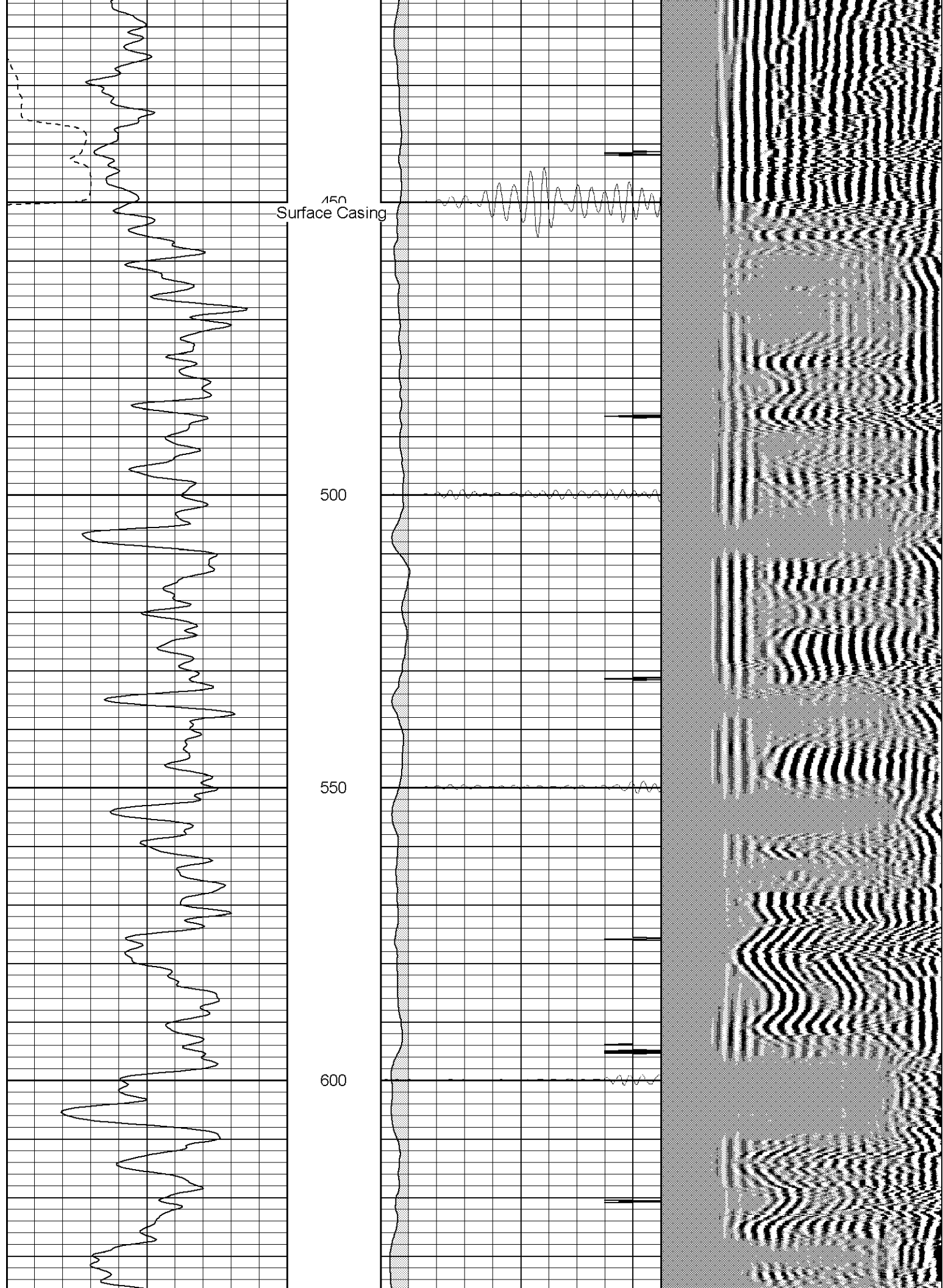
Black Lick, Pa.
Mercer, Pa.
Wooster, Oh.
Cleveland, Ok.
Trinidad, Co.

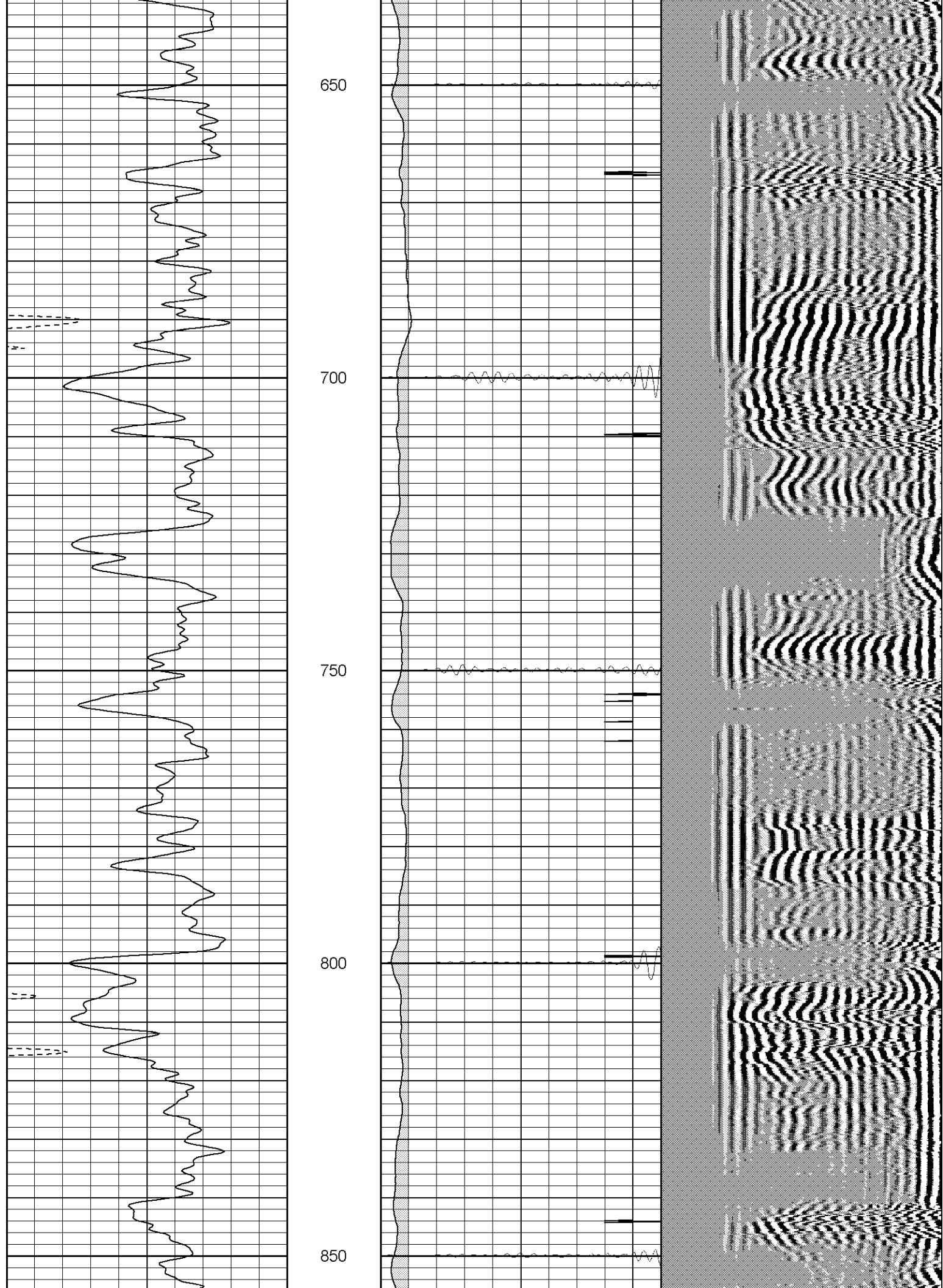
Main Pass (1000PSI)

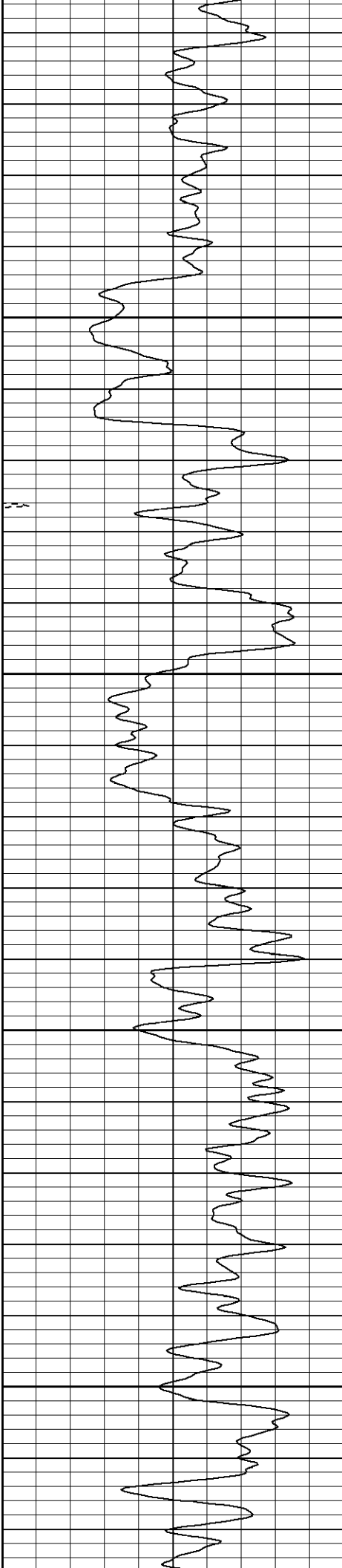
0	GR (GAPI)	200	0	AMP3 (mV)	100	200	Variable Density	1200
400	TT3 (usec)	200	18	CCL	-2			
			200	CBL5	1200			









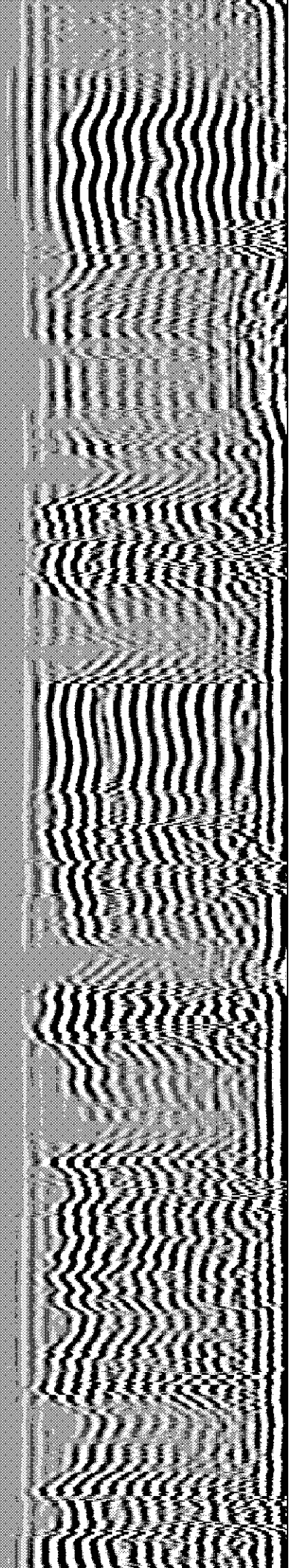
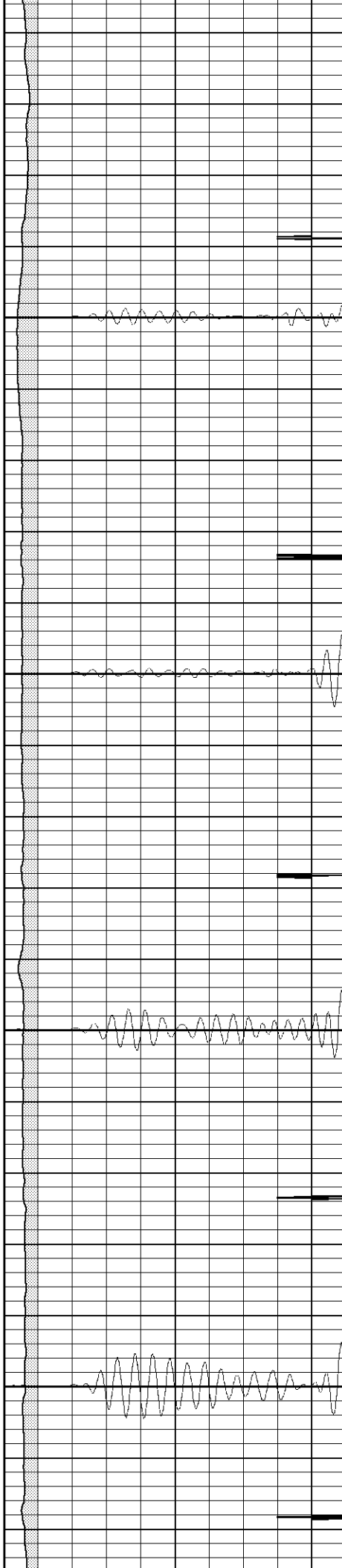


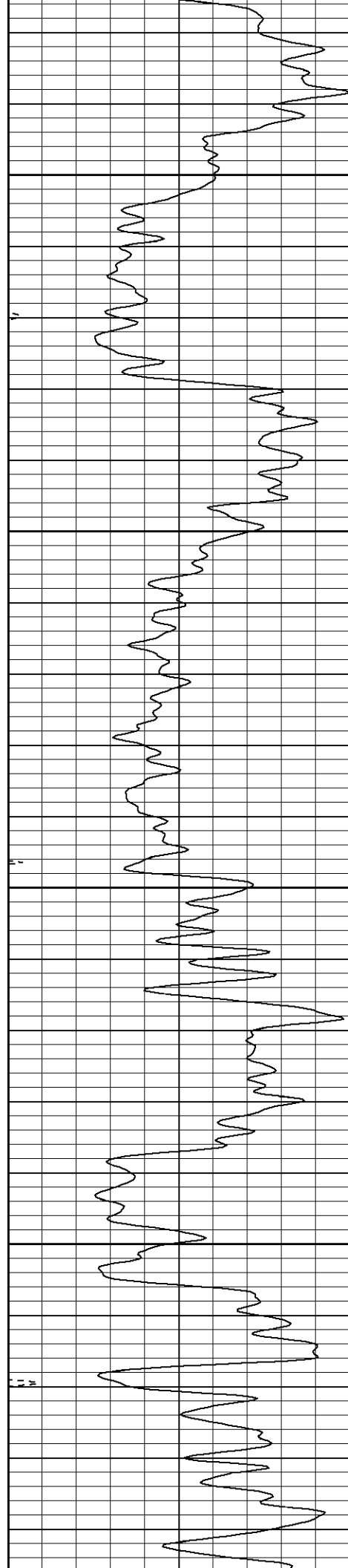
900

950

1000

1050



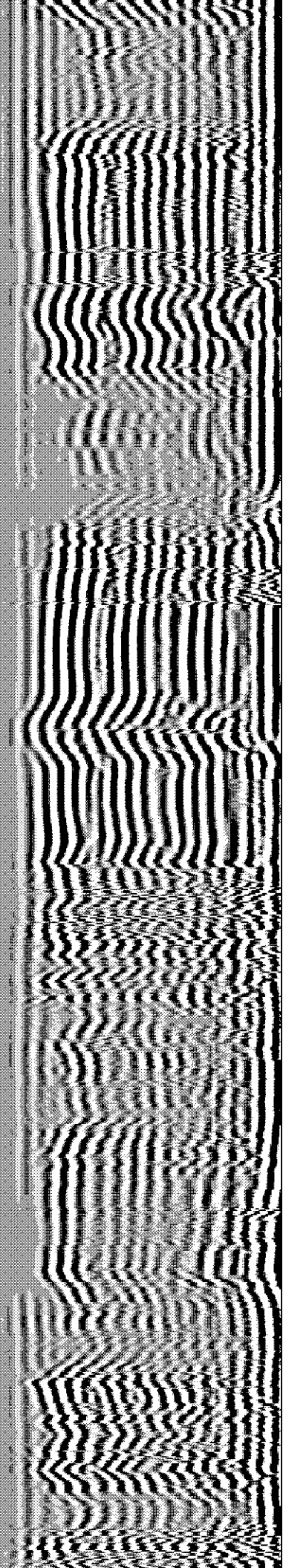
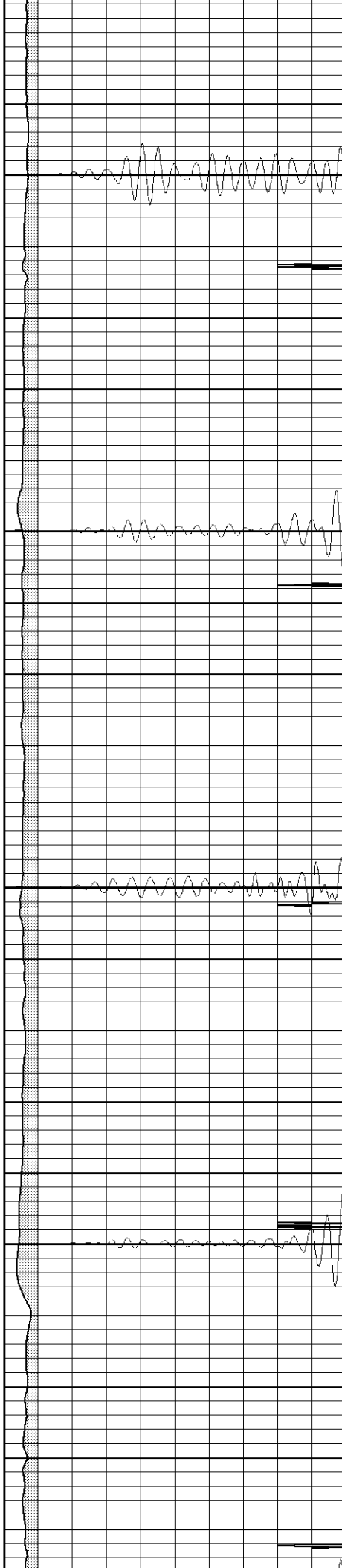


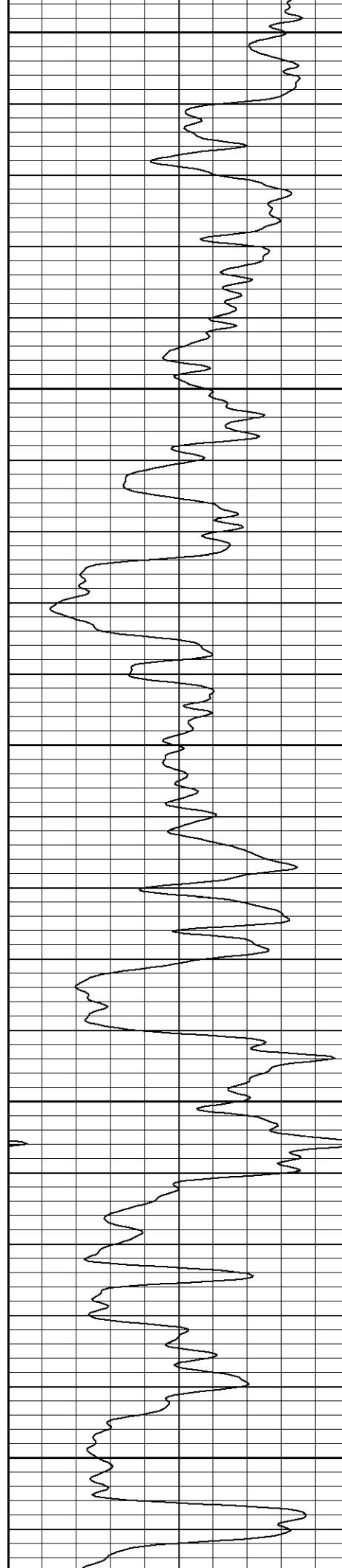
1100

1150

1200

1250





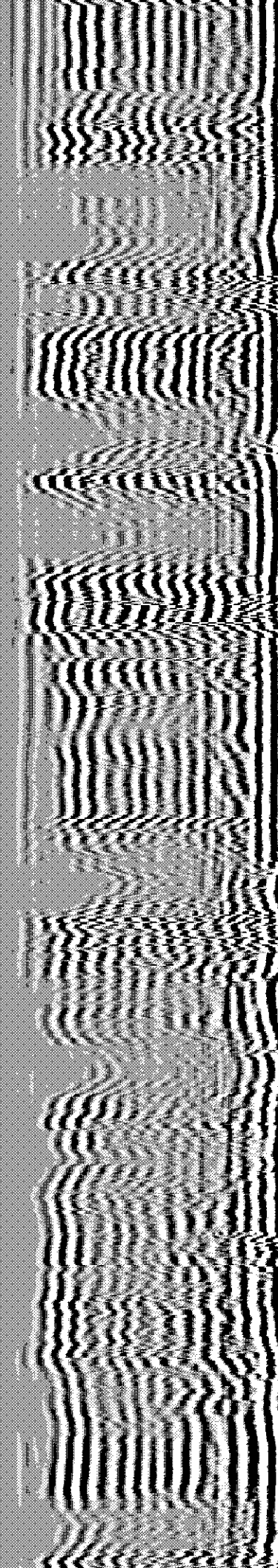
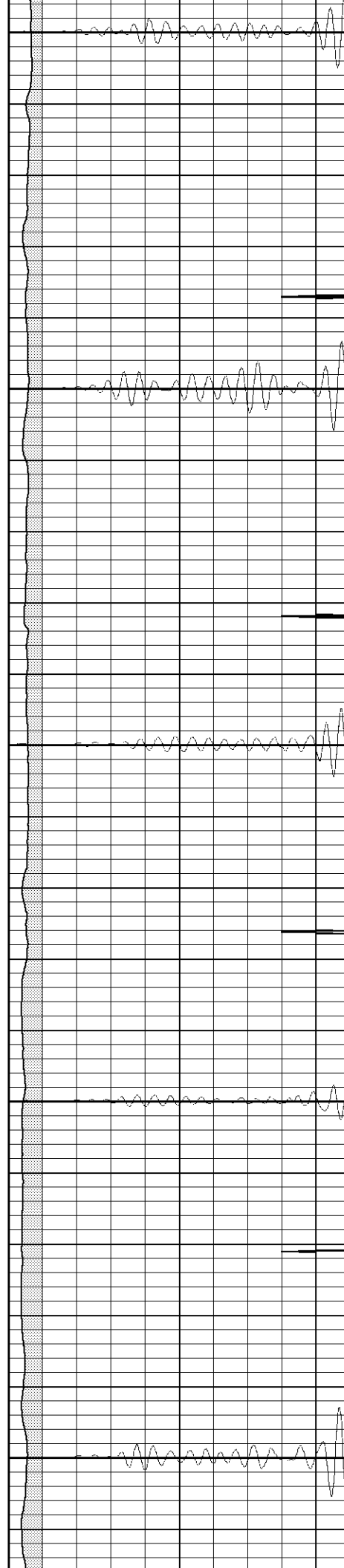
1300

1350

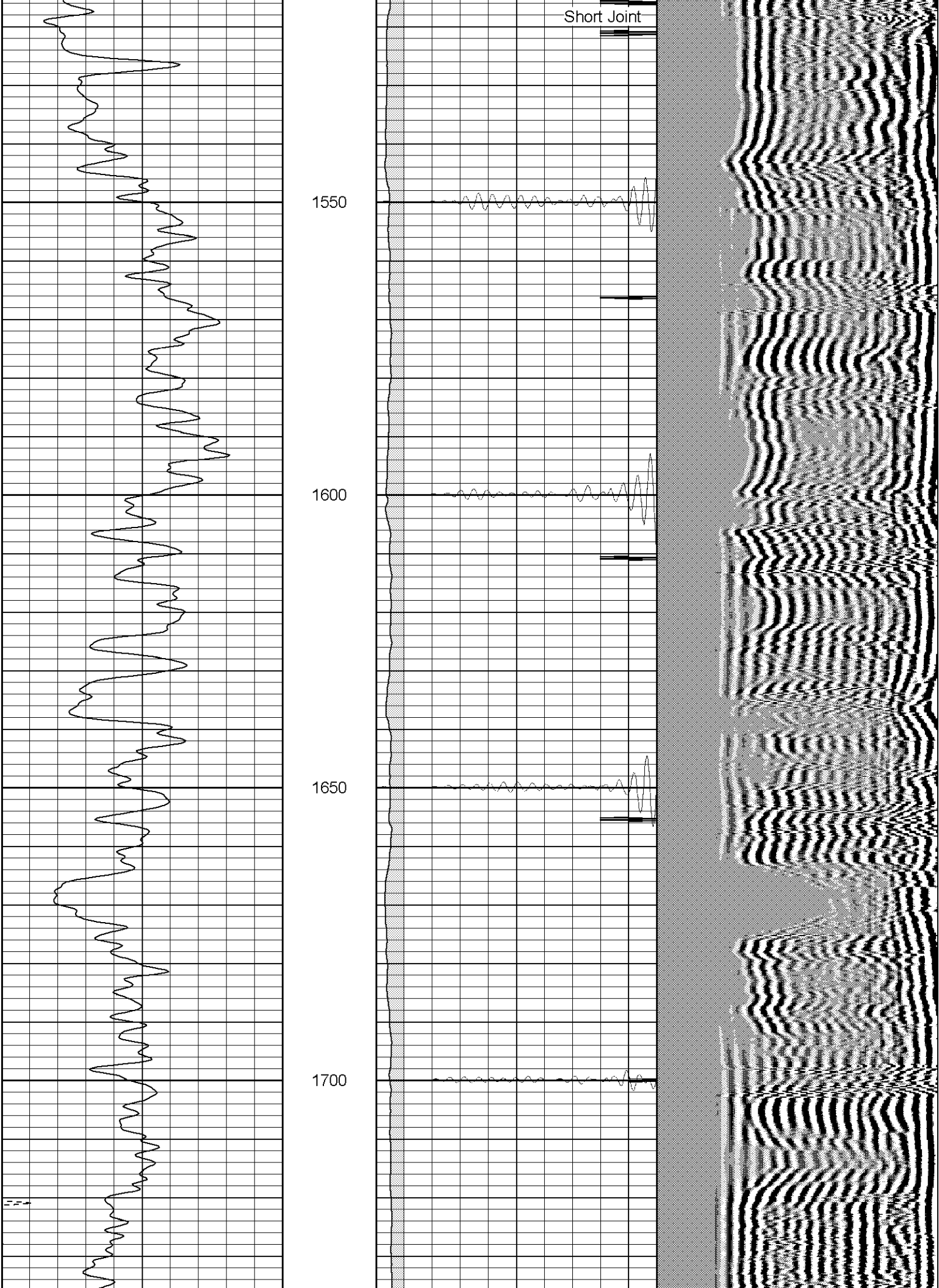
1400

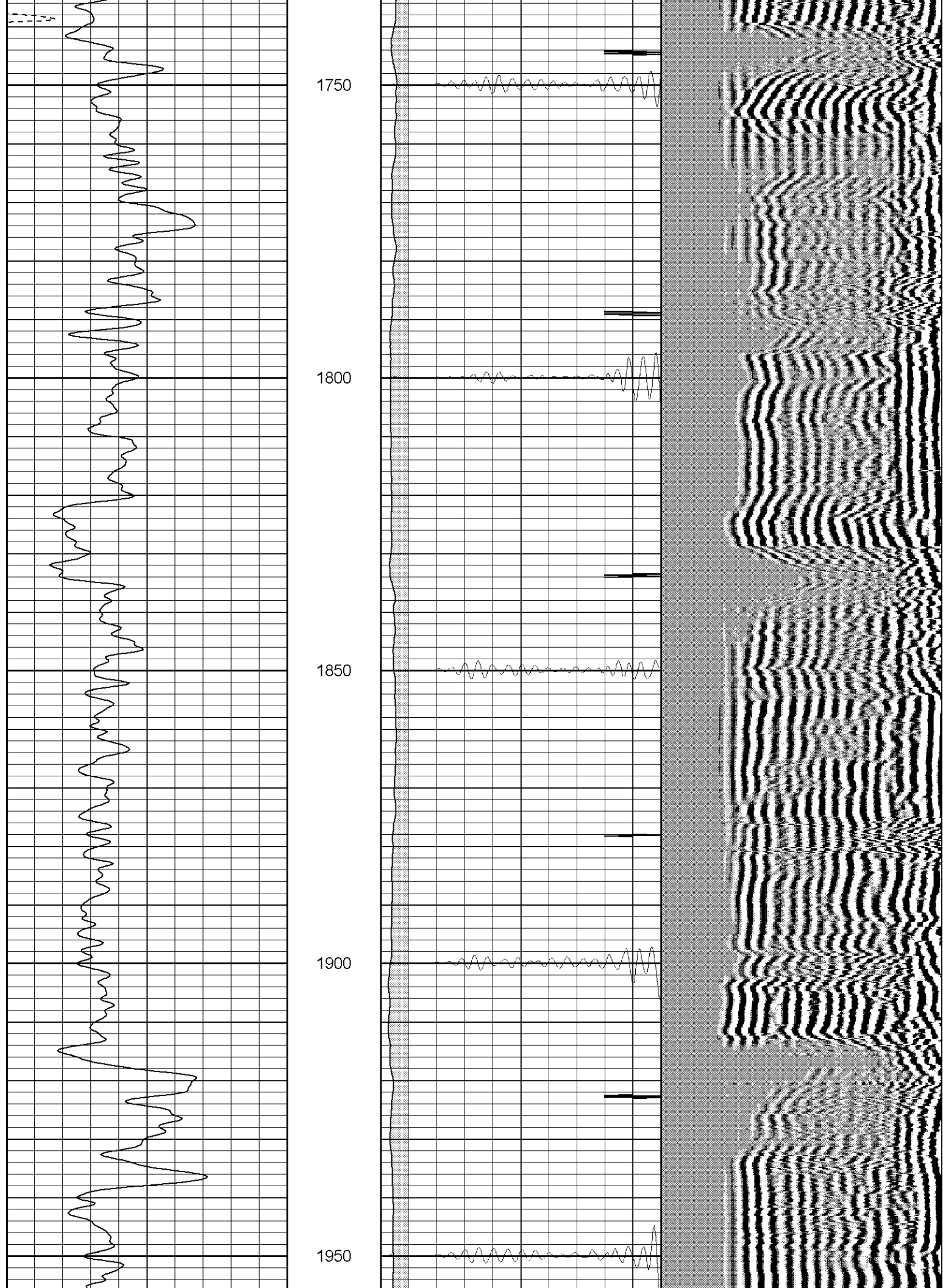
1450

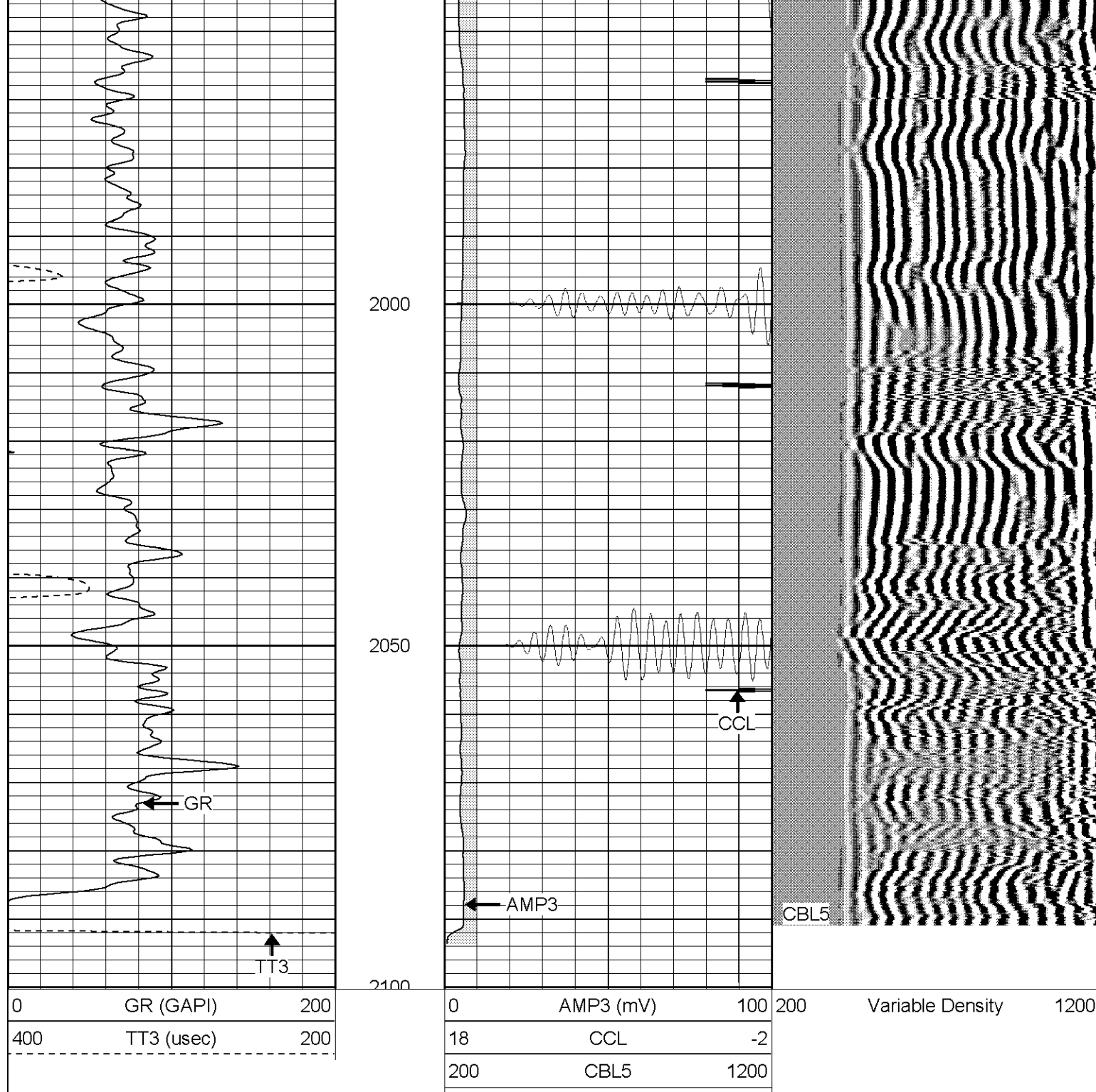
1500



Short Joint







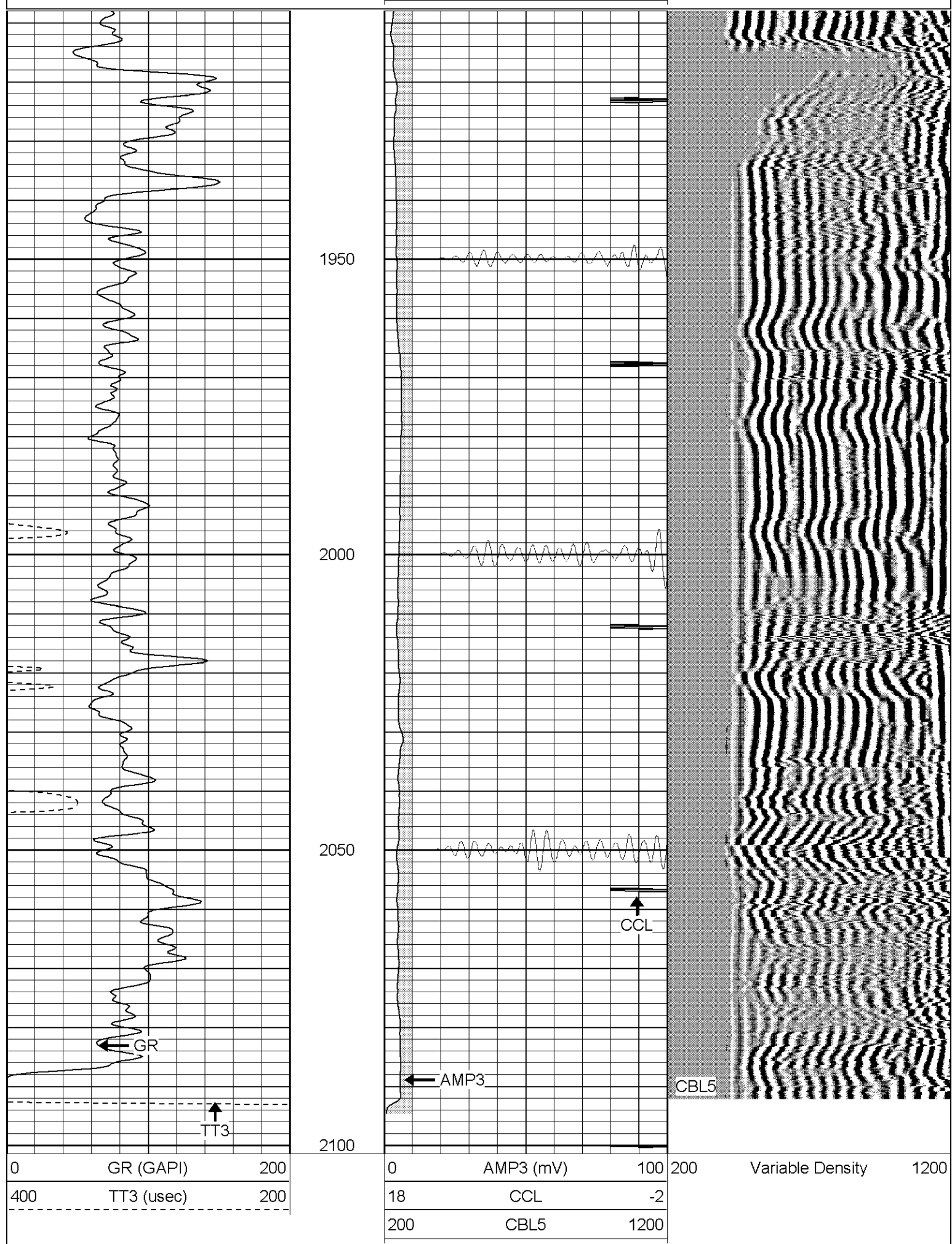
SUPERIOR

Black Lick, Pa.
Mercer, Pa.
Wooster, Oh.
Cleveland, Ok.
Trinidad, Co.

Repeat Section (0PSI)

Database File: ge3309030508b.db
 Dataset Pathname: pass1.1
 Presentation Format: cblrt
 Dataset Creation: Wed Mar 05 16:31:08 2008 by Calc Open-Cased 070814
 Charted by: Depth in Feet scaled 1:240

0	GR (GAPI)	200	0	AMP3 (mV)	100	200	Variable Density	1200
400	TT3 (usec)	200	18	CCL	-2			
			200	CBL5	1200			




Calibration Report

Cement Bond Log Calibration Report

Serial Number:	Titan6		
Tool Model:	T6		
Performed:	Mon Feb 04 11:24:57 2008		
Depth:	206.576	ft	
Casing Diameter:	5.5	in	
	3' Spacing	5' Spacing	
Signal Zero:	0	0	mV
Calibrated Amplitude:	85	85	mV
Reading at Signal Zero:	0.0194092	0	V
Reading in Free Pipe:	1.45	1.2	V
Gain:	59.416	70.8333	
Offset:	1	0	

Gamma Ray Calibration Report

Serial Number:	Titan6	
Tool Model:	T6	
Performed:	Mon Feb 04 15:23:11 2008	
Calibrator Value:	0.0	GAPI
Background Reading:	1.0	cps
Calibrator Reading:	0.0	cps
Sensitivity:	1.1000	GAPI/cps

Sensor	Offset (ft)	Schematic	Description	Len (ft)	OD (in)	Wt (lb)	
GR	13.64		CHD-None (0)	0.75	1.50	5.00	
			GR-T6 (Titan6)	2.52	2.25	25.00	
WVF5	WVF3		8.49	CBL-T6 (Titan6)	7.23	2.25	110.00
CCL	0.81		CENT-X (2)	3.00	1.69	25.00	
			CCL-T6long (Titan6long)	2.15	2.75	15.00	
Dataset: ge3309030508b.db: field/well/run1/pass1 Total Length: 15.66 ft Total Weight: 180.00 lb O.D. 2.75 in							